



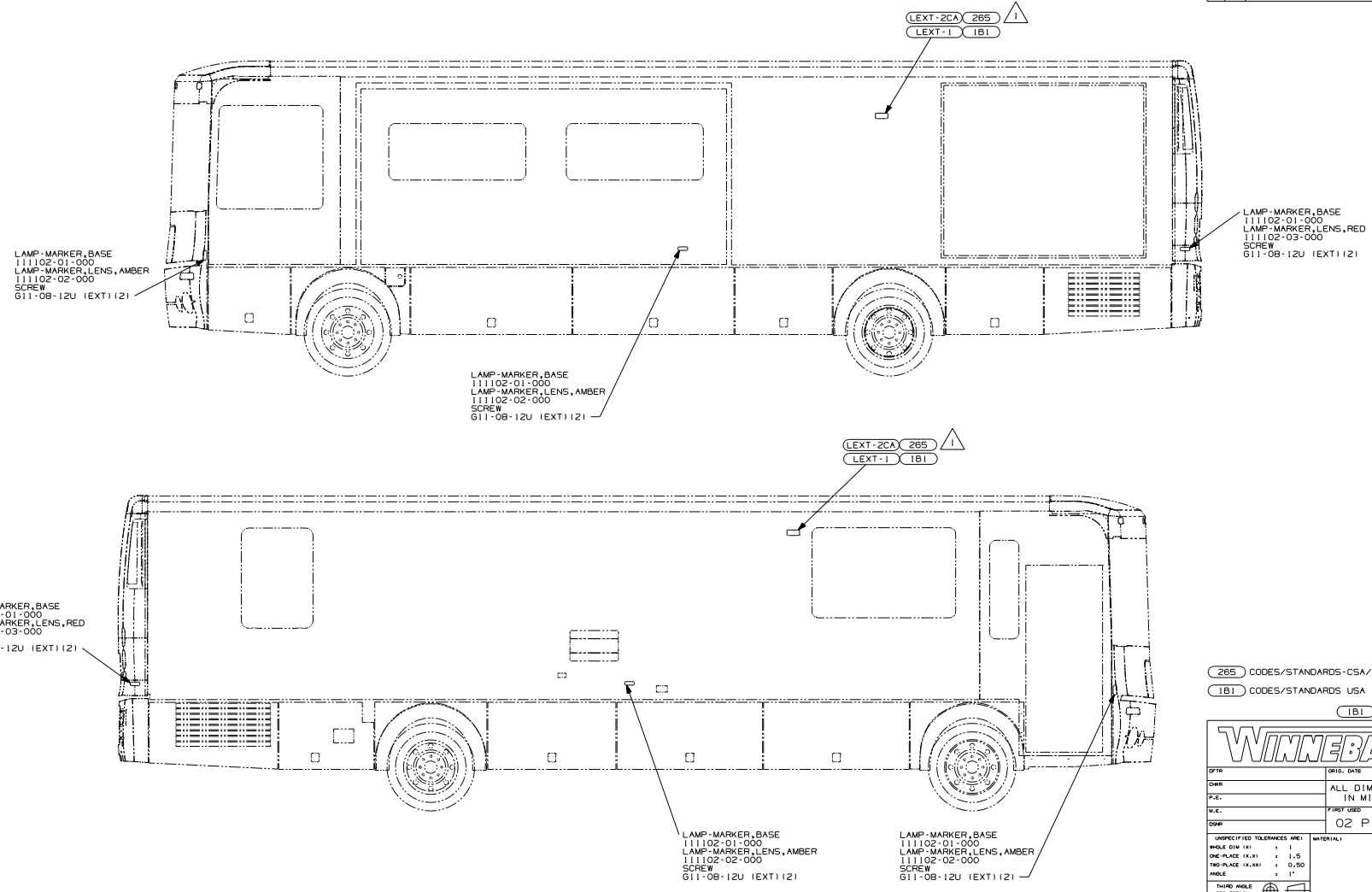
DANGER

Danger of electrical shock, burns or death. Always remove all power sources before attempting any repair, service or diagnostic work. Power can be present from shore power, generator, inverter or battery. All power sources must be disabled and secured before performing any service.



CAUTION

If you lack the skills, tools or equipment to perform diagnostic or repair work leave such work to an authorized Winnebago Industries dealer or other qualified shop.



LAMP-MARKER, BASE
 111102-01-000
 LAMP-MARKER, LENS, AMBER
 111102-02-000
 SCREW
 611-08-12U (EXT) (2)

LAMP-MARKER, BASE
 111102-01-000
 LAMP-MARKER, LENS, AMBER
 111102-02-000
 SCREW
 611-08-12U (EXT) (2)

LAMP-MARKER, BASE
 111102-01-000
 LAMP-MARKER, LENS, RED
 111102-03-000
 SCREW
 611-08-12U (EXT) (2)

LAMP-MARKER, BASE
 111102-01-000
 LAMP-MARKER, LENS, RED
 111102-03-000
 SCREW
 611-08-12U (EXT) (2)

LAMP-MARKER, BASE
 111102-01-000
 LAMP-MARKER, LENS, AMBER
 111102-02-000
 SCREW
 611-08-12U (EXT) (2)

LAMP-MARKER, BASE
 111102-01-000
 LAMP-MARKER, LENS, AMBER
 111102-02-000
 SCREW
 611-08-12U (EXT) (2)

265 CODES/STANDARDS-CSA/CMVSS
 IB1 CODES/STANDARDS USA

IB1 265

WINNEBAGO

QTR ORG. DATE 10/23/00
 DWG ALL DIMENSIONS ARE IN MILLIMETERS
 P.E. IN MILLIMETERS
 V.E. FIRST USED
 DWG 02 P-SERIES

UNSPECIFIED TOLERANCES ARE:	MATERIAL:
HOLES DIA (X) ± .1	
ONE-PLACE (X,XX) ± 1.5	
TWO-PLACE (X,XX) ± 0.50	
THIRD PLACE ± .1*	
THIRD ANGLE PROJECTION	

FOR ELECTRICAL TORQUE SPECIFICATIONS SEE DWG NO. 128783-01-000

X-X FOR ELECTRICAL CALLOUTS SEE DWG NO. 121338-01-000

DO NOT SCALE DRAWING

TITLE: WIRING INSTL-EXTERIOR LAMPS
 SHEET 1 of 2 PART NO. 137235

1 INSTALL WITH WIRES TOWARD ROOF.

LAMP-MARKER, BASE
133055-03-000 (5)
LAMP-MARKER, LENS, AMBER
133055-02-000 (15)
BULB
36196-01-000 (15)

WIRE ASM-CLEARANCE LAMPS
126466-03-000

WIRE ASM-BACKWALL, FL
132673-01-000

LAMP-MARKER, BASE
133055-03-000 (5)
LAMP-MARKER, LENS, RED
133055-01-000 (15)
BULB
36196-01-000 (15)

LIGHT ASM-BRAKE, CENTER MOUNT
136917-01-000
SCREW
G39-06-16T (2)
(BLK/WHI TO YEL)
(BLK TO WHI)

LIGHT ASM-STOP/TURN/TAIL, RED
133054-03-000 (2)
SCREW
G11-08-12U (EXT) (14)

2 PIN HOUSING
TO WIRE ASM-IP, MAIN

TAIL LAMP WIRING
(SEE DETAIL BA)

LIGHT ASM-TURN, AMBER
133054-04-000 (2)
SCREW
G11-08-12U (EXT) (14)

TO WIRE ASM-IP, MAIN

TO WIRE ASM-IP, MAIN

TO SIDEMARKER LAMP

LIGHT ASM-BACKUP
106688-01-000 (2)
BULB
37834-01-000 (2)
SCREW
G39-08-16U (EXT) (14)

2 WIRE DROP
TO SIDEMARKER LAMP

2 WIRE DROP
TO SIDEMARKER LAMP

TO SIDEMARKER LAMP

TO SIDEMARKER LAMP

TO PARK LAMPS

TO PARK LAMPS

LAMP-LICENSE
97201-01-000
SCREW
G11-06-12U (EXT) (12)

REFLECTOR-STICK ON-RED
106646-02-000 (2)

WIRE ASM-HEADLAMP, RIGHT
132789-04-000

WIRE ASM-HEADLAMP, LEFT
132789-03-000

3 PIN HOUSING
TO LEFT HEADLAMP

3 PIN HOUSING
TO RIGHT HEADLAMP

(2) SPADE TERMINALS
TO FOGLAMP

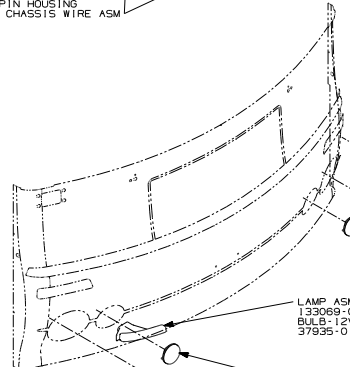
1 240 SCREW
101618-01-000 (EXT) (2)

7 PIN HOUSING
TO CHASSIS WIRING

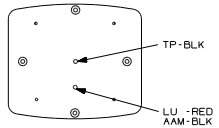
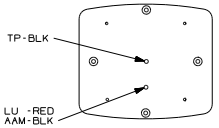
(2) SPADE TERMINALS
TO FOGLAMP

5 PIN HOUSING
TO CHASSIS WIRE ASM

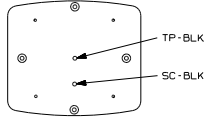
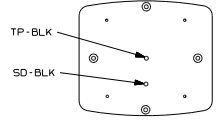
TO HORN
(CHASSIS SUPPLIED)



LAMP ASM-PARK/TURN, AMBER, LH
133069-02-000
BULB-12V, 1157
37935-01-000



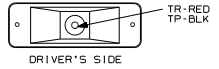
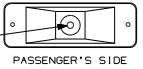
LAMP ASM-PARK/TURN, AMBER, RH
133069-01-000
BULB-12V, 1157
37935-01-000



LAMP ASM-FOG, CLEAR, ROUND
133115-01-000 (2)

2 PLATE ASM-HEADLAMP
137765-01-CHT (2)
SCREW
G39-08-08B (12)

HEADLAMP ASM-H/L, RD
135625-02-000 (2)
SPRING-HEADLIGHT RETAINER
048259-01-000 (2)
SCREW ASM-HEADLAMP ADJ
110750-01-000 (4)



240 TRAILER HITCH

2 LAMP TO BE ASSEMBLED TO PLATE ASM PRIOR TO ITS ATTACHMENT TO THE FRONT END.

1 CONNECTOR-PLUG, TRAILER (1113589-01-000) TO BE SUPPLIED IN COACH WITH 240

FOR ELECTRICAL
TORQUE
SPECIFICATIONS
SEE DWG NO.
126783-01-000

X-X
FOR ELECTRICAL
CALLOUTS
SEE DWG NO.
121339-01-000

DETAIL BA
(SHOWN FROM REAR SIDE)

FIRST USED	02 P-SERIES	
TITLE:	DO NOT SCALE DRAWING	
WIRING INSTL-EXTERIOR LAMPS		
SHEET 2	PART NO	137235