



DANGER

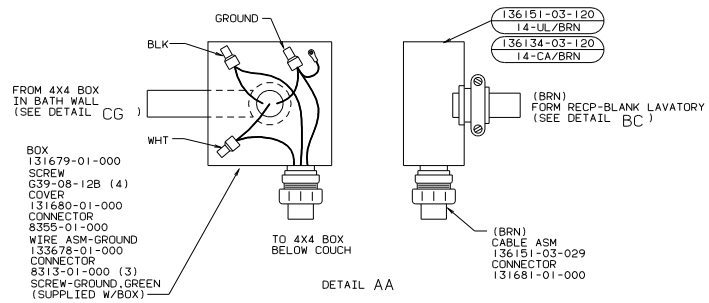
Danger of electrical shock, burns or death. Always remove all power sources before attempting any repair, service or diagnostic work. Power can be present from shore power, generator, inverter or battery. All power sources must be disabled and secured before performing any service.



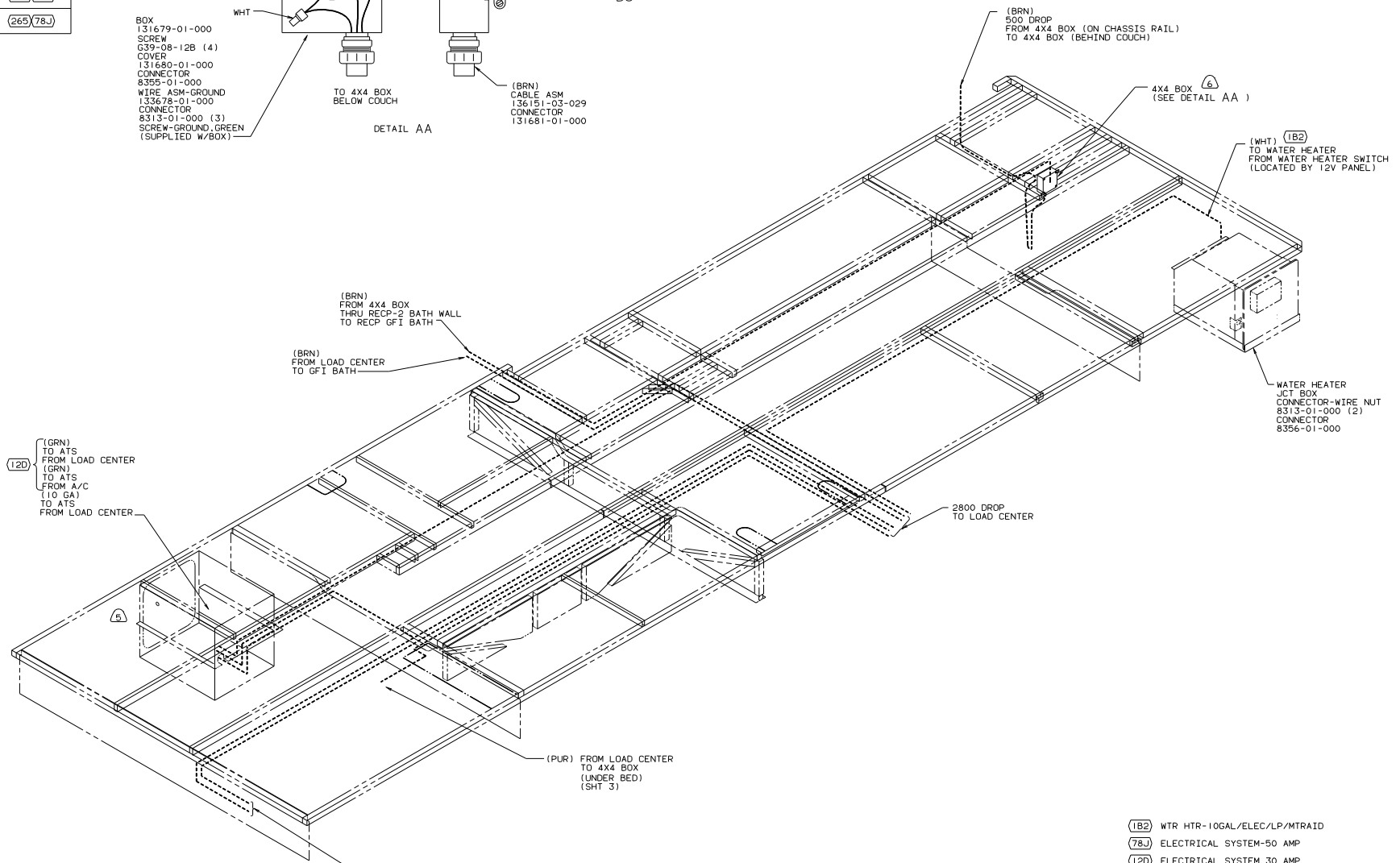
CAUTION

If you lack the skills, tools or equipment to perform diagnostic or repair work leave such work to an authorized Winnebago Industries dealer or other qualified shop.

DWG NO.	FEATURE
138211-01	-----
138211-11	(181)(12D)
138211-12	(181)(78J)
138211-15	(265)(12D)
138211-16	(265)(78J)



- BOX
131679-01-000
SCREW
G39-08-12B (4)
COVER
131680-01-000
CONNECTOR
8355-01-000
WIRE ASM-GROUND
133678-01-000
CONNECTOR
8313-01-000 (3)
SCREW-GROUND, GREEN
(SUPPLIED W/BOX)



- (7) FOR MORE INFORMATION SEE LOAD CENTER/ATS ASM.
- (6) MOUNT ON OUTER SIDE OF CHASSIS RAIL.
- (5) SEE GENERATOR INSTALLATION FOR ADDITIONAL INFORMATION.
4. SEE WIRING DIAGRAM-BODY FOR ADDITIONAL INFORMATION.
3. ALL GROUND WIRES ARE TO BE COVERED WITH TUBING 8041-02-000.
2. ALL WIRES ARE TO BE CLAMPED WITH CLAMP 10495-01-000 OR CLIP 80734-02-000 EVERY 600. USE SCREW G67-10-12B OR G39-10-12B UNLESS OTHERWISE SPECIFIED.
- NOTES:

- (GRN) TO A/C FROM LOAD CENTER (78J)
- (GRN) TO A/C FROM A/C (12D)
- (RED) TO A/C FROM LOAD CENTER

- (182) WTR HTR-10GAL/ELEC/LP/MTR/IDA
- (78J) ELECTRICAL SYSTEM-50 AMP
- (12D) ELECTRICAL SYSTEM 30 AMP
- (265) CODES/STANDARDS-CSA/CMVSS
- (181) CODES/STANDARDS USA
- (181)(265)(12D)(78J)

FOR ELECTRICAL TORQUE SPECIFICATIONS SEE DWG NO. 128783-01-000

FOR ELECTRICAL CALLOUTS SEE DWG NO. 121339-01-000

WINNEBAGO 02 G35U

DATE	UNSPECIFIED TOLERANCES ARE:	MATERIAL
DATE	UNLESS SHOWN OTHERWISE	
DATE	ONE-PLACE (1X.1)	
DATE	TWO-PLACE (2X.01)	
DATE	THREE-PLACE (3X.001)	
DATE	FOUR-PLACE (4X.0001)	

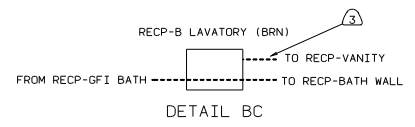
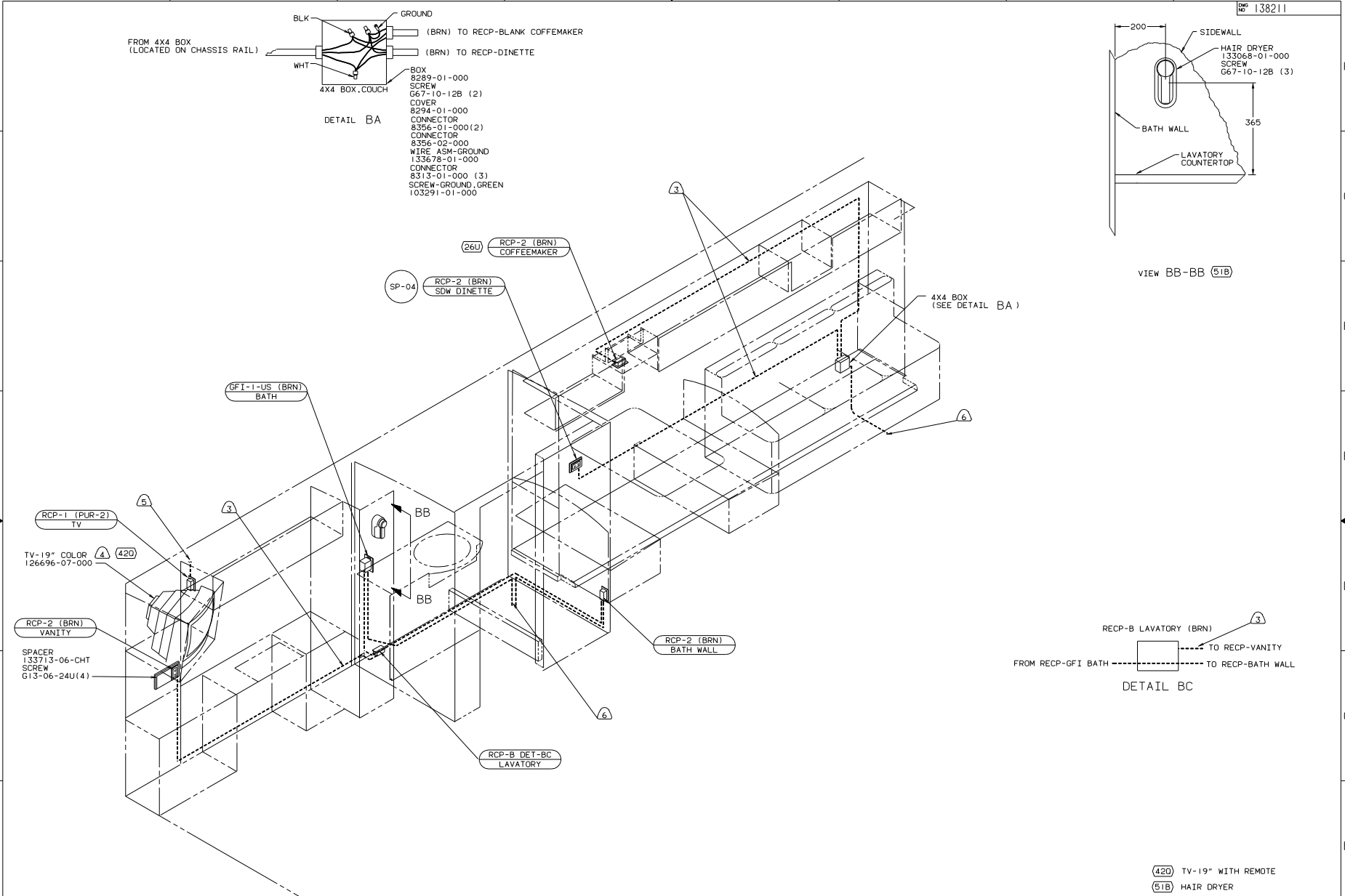
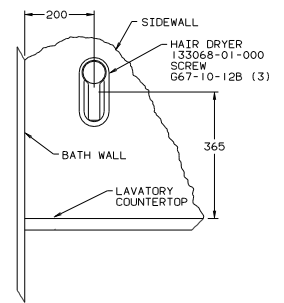
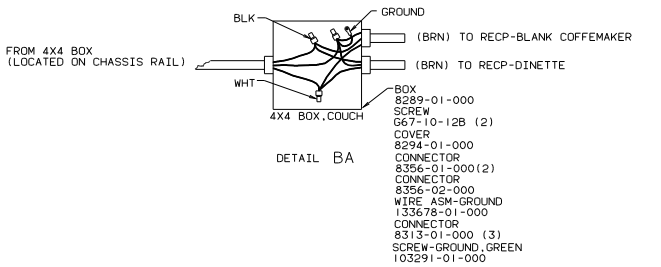
WIRING INSTL-BODY, 110V(BL)

SCALE: NONE DO NOT SCALE DRAWING

SHEET 1 OF 3

138211

REF: 135443 PAGE 106



- NOTES:
- ⑥ WIRE ROUTED THROUGH FLOOR AT THIS POINT.
 - ⑤ WIRE IN ROOF.
 - ④ SEE CABINET ASSEMBLY FOR ADDITIONAL INFORMATION.
 - ③ WIRE IN SIDEWALL.
2. ALL WIRES ARE TO BE CLAMPED WITH CLAMP 10495 WITHIN 200 OF OUTLET BOXES, USE SCREW 667-10-12B.
1. ALL WIRE ROUTED ABOVE FLOOR TO BE CLAMPED WITH CLAMP 10495 AND SCREW 667-10-12B OR TIED WITH WIRE TIE 8343 AS REQUIRED AT LEAST EVERY 700MM OR AS OTHERWISE SPECIFIED.

- ④20 TV-19" WITH REMOTE
- ⑤1B HAIR DRYER
- ②6U COFFEE MAKER
- ⑦8J ELECTRICAL SYSTEM-50 AMP
- ①20 ELECTRICAL SYSTEM 30 AMP
- ②65 CODES/STANDARDS-CSA/CMVSS
- ①81 CODES/STANDARDS USA

FOR ELECTRICAL TORQUE SPECIFICATIONS SEE DWG NO. 128783-01-000

(X-X)

FOR ELECTRICAL CALLOUTS SEE DWG NO. 121339-01-000

02 G35U (181) (265) (120) (78J)

TITLE: WIRING INSTL-BODY, (L30/50)
 DWG NO. 138211
 SHEET 2 OF 3

