



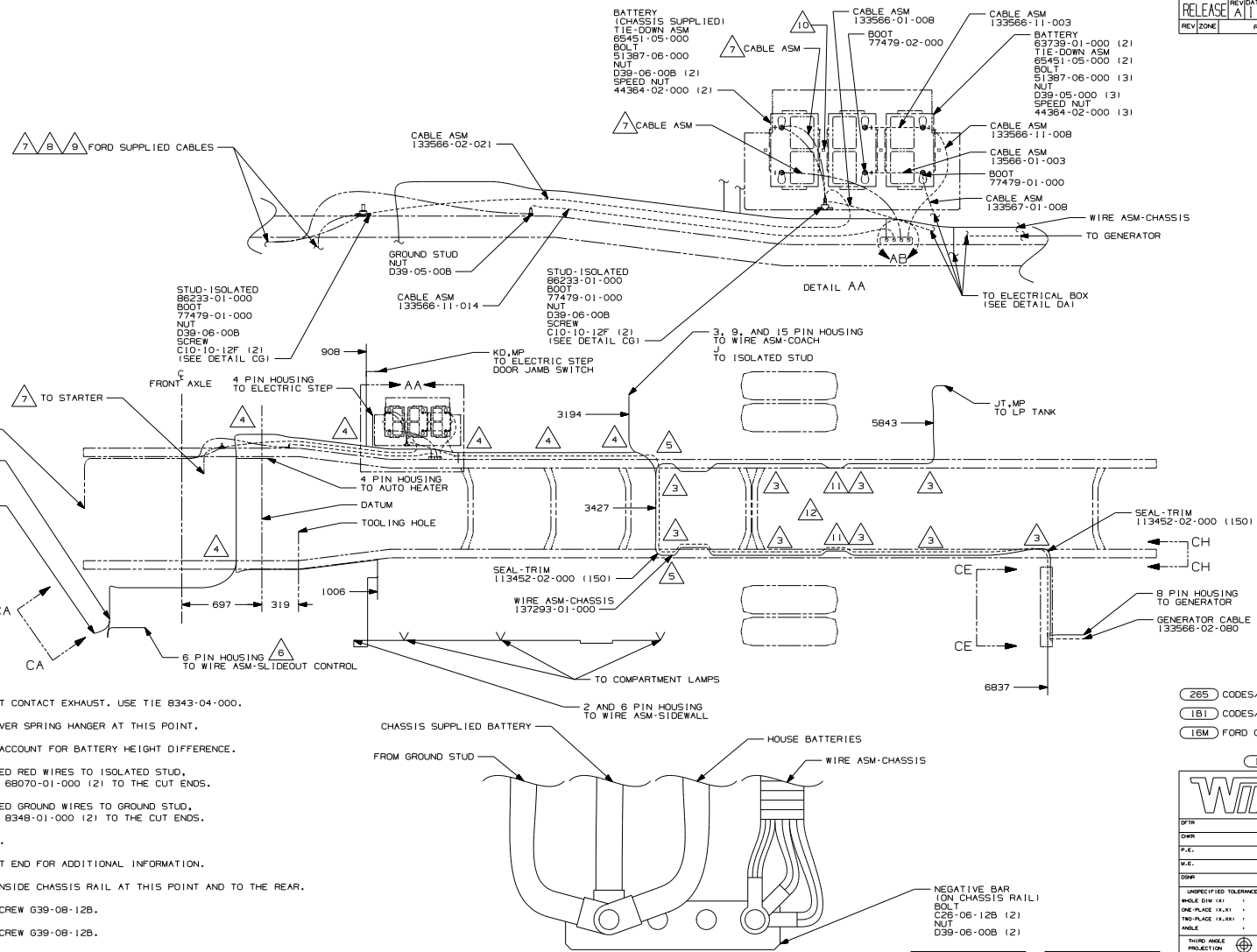
DANGER

Danger of electrical shock, burns or death. Always remove all power sources before attempting any repair, service or diagnostic work. Power can be present from shore power, generator, inverter or battery. All power sources must be disabled and secured before performing any service.



CAUTION

If you lack the skills, tools or equipment to perform diagnostic or repair work leave such work to an authorized Winnebago Industries dealer or other qualified shop.



- 12 SECURE SO WIRES DO NOT CONTACT EXHAUST. USE TIE 8343-04-000.
- 11 ROUTE WIRES & CABLE OVER SPRING HANGER AT THIS POINT.
- 10 USE TWO NUTS HERE TO ACCOUNT FOR BATTERY HEIGHT DIFFERENCE.
- 9 LOCATE CHASSIS SUPPLIED RED WIRES TO ISOLATED STUD, CUT AND ADD TERMINALS 68070-01-000 (2) TO THE CUT ENDS.
- 8 LOCATE CHASSIS SUPPLIED GROUND WIRES TO GROUND STUD, CUT AND ADD TERMINALS 6348-01-000 (2) TO THE CUT ENDS.
- 7 SUPPLIED WITH CHASSIS.
- 6 SEE WIRING INSTL-FRONT END FOR ADDITIONAL INFORMATION.
- 5 ROUTE WIRES & CABLE INSIDE CHASSIS RAIL AT THIS POINT AND TO THE REAR.
- 4 CLAMP B3610-03-000, SCREW G39-08-12B.
- 3 CLAMP B3610-01-000, SCREW G39-08-12B.

2. SECURE CONDUIT 41953-09, -10, -11, -13, AND -14 OVER ALL WIRES IN CONTACT WITH SHARP EDGES.

1. LEGEND: _____ WINNEBAGO; - - - - - CABLE; - - - - - CHASSIS SUPPLIED WIRING.

FOR ELECTRICAL TORQUE SPECIFICATIONS SEE DWG NO. 128793-01-000

FOR ELECTRICAL CALLOUTS SEE DWG NO. 121339-01-000

- 285 CODES/STANDARDS - CSA/CMVSS
 - 1B1 CODES/STANDARDS - USA
 - 16M FORD CHASSIS - 20,500#/GVWR
- 16M 1B1 285

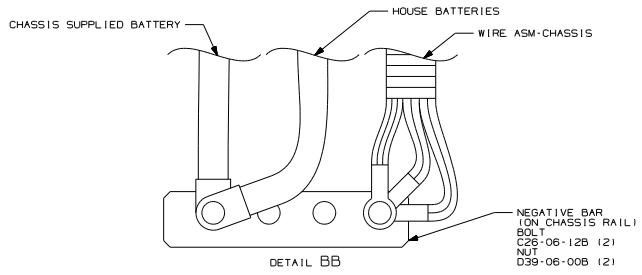
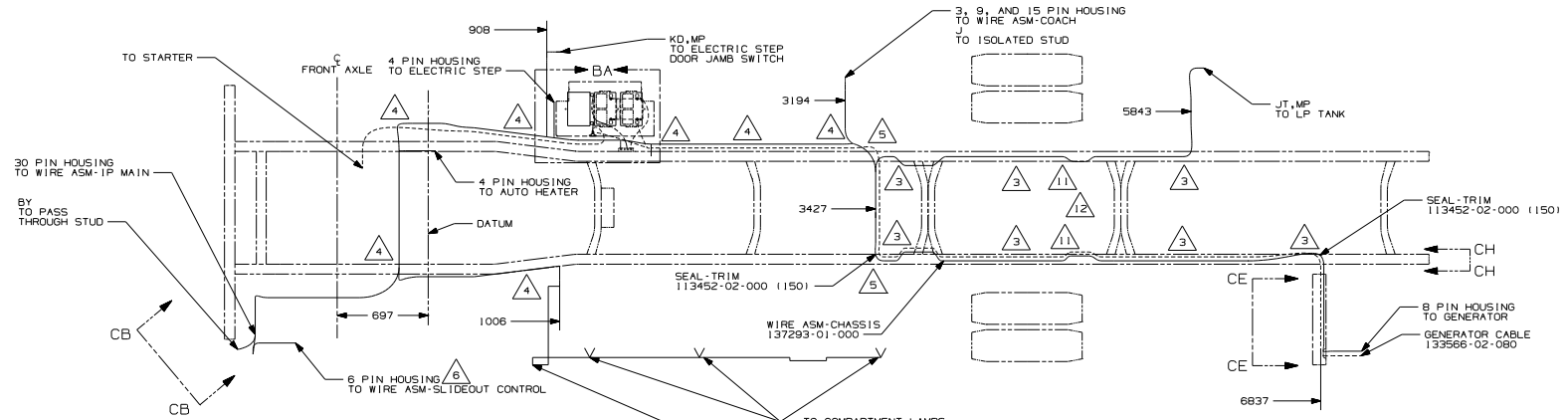
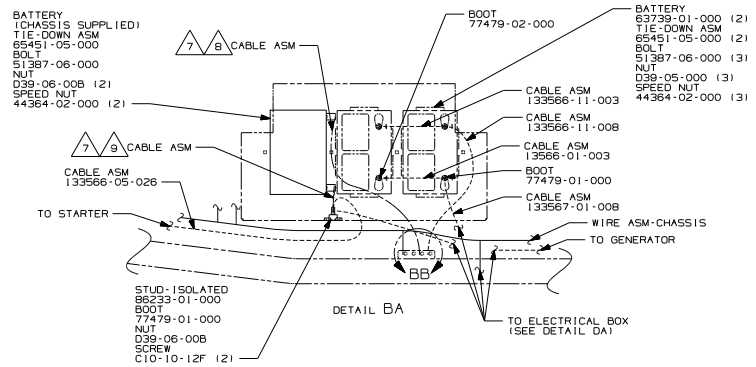
WINNEBAGO

QTR ORG. DATE 11/07/00
 DWR ALL DIMENSIONS ARE IN MILLIMETERS
 P.E. FIRST USED
 V.E. 02 G32V
 DWR

UNSPECIFIED TOLERANCES ARE:
 HOLE DIA (X)
 ONE-PLACE (X,XX)
 TWO-PLACE (X,XXX)
 HOLE
 THIRD ANGLE PROJECTION

DO NOT SCALE DRAWING

TITLE: WIRING INSTL-CHASSIS
 SHEET 1 of 4 PART NO 137071



- 12 SECURE SO WIRES DO NOT CONTACT EXHAUST. USE TIE 8343-04-000.
- 11 ROUTE WIRES & CABLE OVER SPRING HANGER AT THIS POINT.
- 10 USE TWO NUTS HERE TO ACCOUNT FOR BATTERY HEIGHT DIFFERENCE.
- 9 LOCATE CHASSIS SUPPLIED RED WIRES TO ISOLATED STUD, CUT AND ADD TERMINAL 68070-01-000 TO THE CUT END.
- 8 LOCATE CHASSIS SUPPLIED GROUND WIRES TO NEGATIVE BAR, CUT AND ADD TERMINAL 8348-01-000 TO THE CUT END.
- 7 SUPPLIED WITH CHASSIS.
- 6 SEE WIRING INSTL-FRONT END FOR ADDITIONAL INFORMATION.
- 5 ROUTE WIRES & CABLE INSIDE CHASSIS RAIL AT THIS POINT AND TO THE REAR.
- 4 CLAMP 83610-03-000, SCREW 639-08-12B.
- 3 CLAMP 83610-01-000, SCREW 639-08-12B.

2. SECURE CONDUIT 41953-09, -10, -11, -13, AND -14 OVER ALL WIRES IN CONTACT WITH SHARP EDGES.

1. LEGEND: _____ WINNEBAGO; - - - - - CABLE; - - - - - CHASSIS SUPPLIED WIRING.

- 285 CODES/STANDARDS - CSA/CMVSS
- 1PN WORKHORSE CHASSIS - 20,700#/GVWR
- 1B1 CODES/STANDARDS - USA

1B1 1PN 285

FIRST USED **02 G32V**

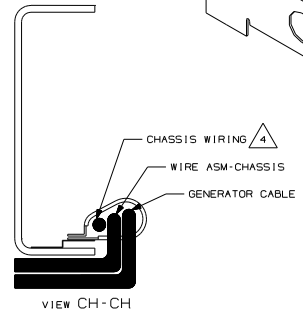
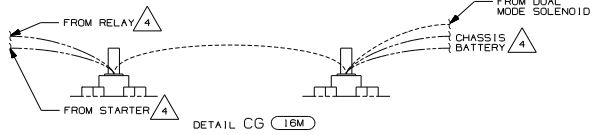
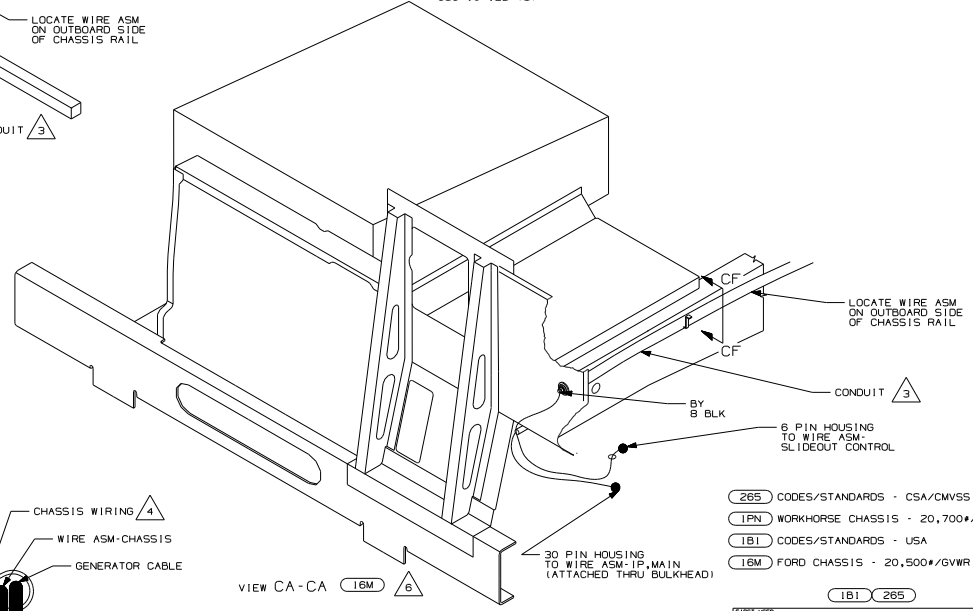
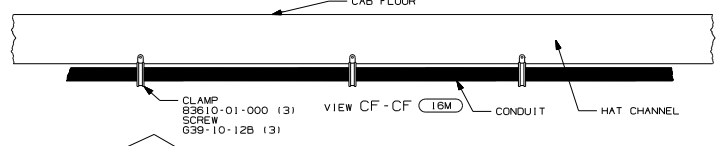
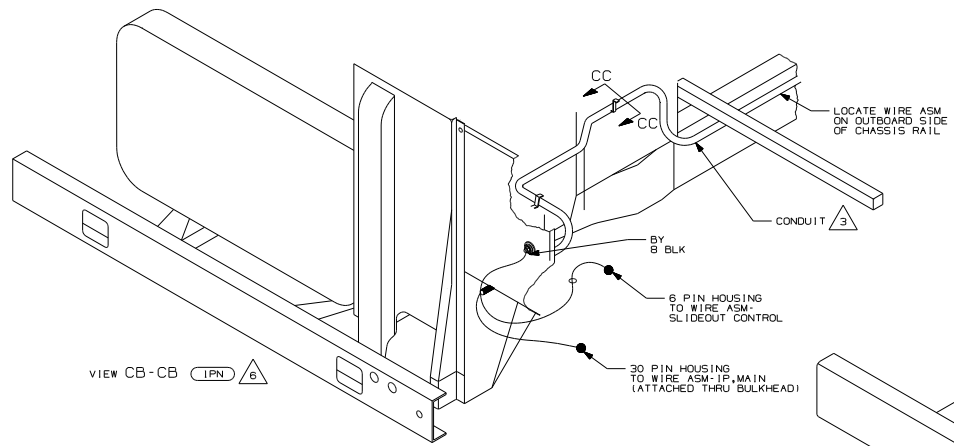
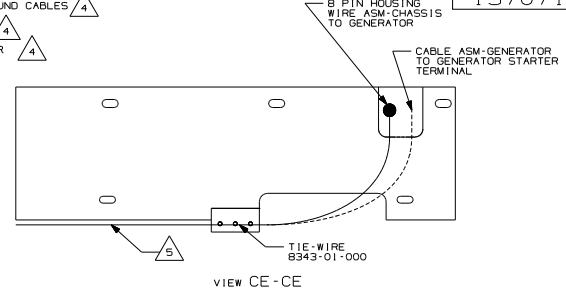
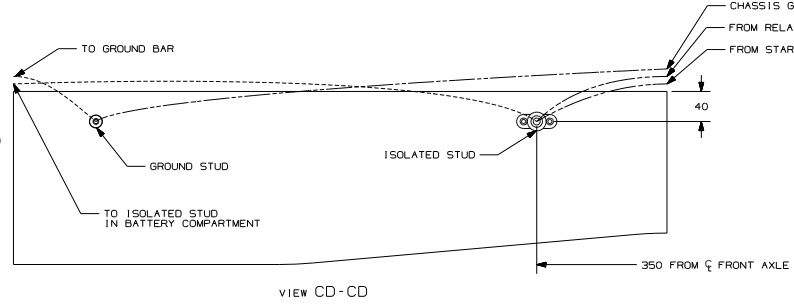
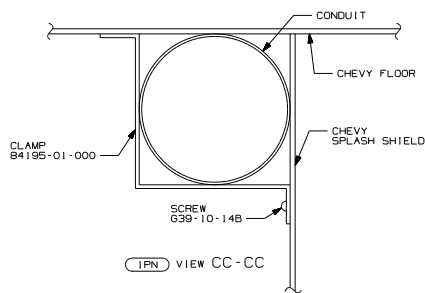
DO NOT SCALE DRAWING

TITLE: **WIRING INSTL-CHASSIS**

SHEET **2** PART NO **137071**

FOR ELECTRICAL TORQUE SPECIFICATIONS SEE DWG NO. 128793-01-000

FOR ELECTRICAL CALLOUTS SEE DWG NO. 121339-01-000



- 6 SEE WIRING INSTL-FRONT END FOR ADDITIONAL INFORMATION.
5 SECURE SO WIRES DO NOT CONTACT EXHAUST.
4 SUPPLIED WITH CHASSIS.
3 COVER WITH CONDUIT 41953-09, -10, -11, -13, AND -14 OVER ALL WIRES IN CONTACT WITH SHARP EDGES.
1. LEGEND: — WINNEBAGO; - - - CABLE; - - - CHASSIS SUPPLIED WIRING.
- NOTES:

265 CODES/STANDARDS - CSA/CMVSS
1FN WORKHORSE CHASSIS - 20,700#/GVWR
1B1 CODES/STANDARDS - USA
16M FORD CHASSIS - 20,500#/GVWR

181 265

FOR ELECTRICAL TORQUE SPECIFICATIONS SEE DWG NO. 128793-01-000

FOR ELECTRICAL CALLOUTS SEE DWG NO. 121339-01-000

FOR ELECTRICAL TORQUE SPECIFICATIONS SEE DWG NO. 128793-01-000

FOR ELECTRICAL CALLOUTS SEE DWG NO. 121339-01-000

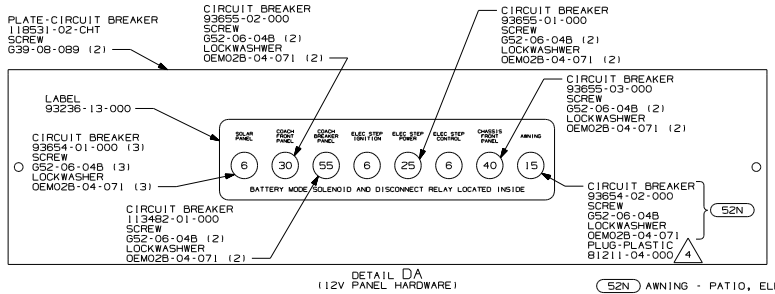
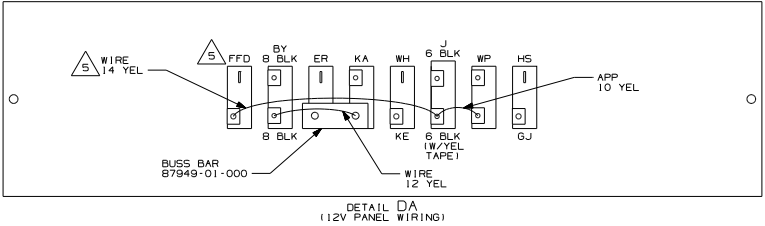
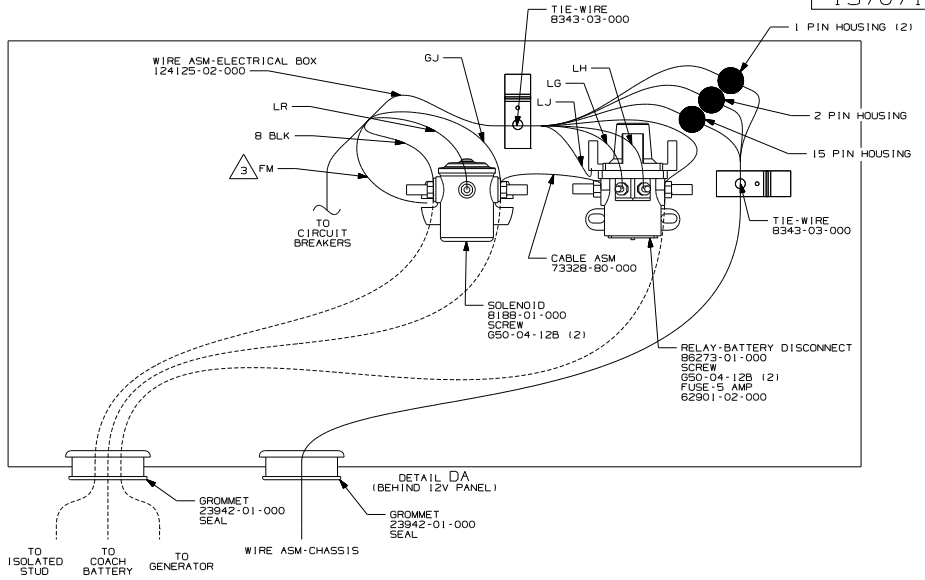
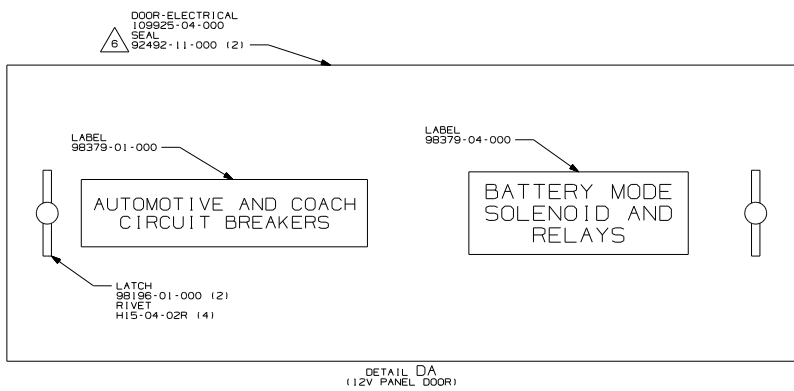
8265

02 G32V

DO NOT SCALE DRAWING

WIRING INSTL-CHASSIS

SHEET 3 PART NO 137071



- 6 PLACE AROUND ENTIRE PERIMETER OF DOOR WITH SEAM AT TOP.
- 5 WITHOUT (52N) TIE BACK TO LOOM.
- 4 WITHOUT (52N) .
- 3 SECURE WITH SOLENOID MOUNTING SCREW.

2. SECURE CONDUIT 41953-09, -10, -11, -13, AND -14 OVER ALL WIRES IN CONTACT WITH SHARP EDGES.

1. LEGEND: _____ WINNEBAGO; - - - - - CABLE; - - - - - CHASSIS SUPPLIED WIRING.

NOTES:

- (52N) AWNING - PATIO, ELECTRIC
- (265) CODES/STANDARDS - CSA/CMVSS
- (1PN) WORKHORSE CHASSIS - 20,700#/GVWR
- (1B1) CODES/STANDARDS - USA
- (16M) FORD CHASSIS - 20,500#/GVWR

(16M) (1B1) (1PN) (265)

FOR ELECTRICAL
TORQUE
SPECIFICATIONS
SEE DWG NO.
128793-01-000

FOR
ELECTRICAL
CALLOUTS
SEE DWG NO.
12139-01-000

FIRST USED	02 G32V
DO NOT SCALE DRAWING	
TITLE: WIRING INSTL-CHASSIS	
SHEET 4	PART NO 137071