



**DANGER**

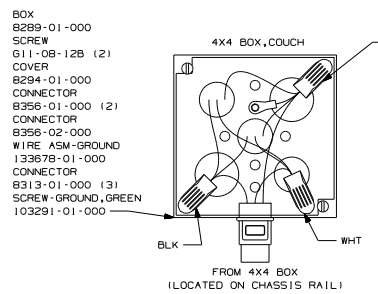
**Danger of electrical shock, burns or death.** Always remove all power sources before attempting any repair, service or diagnostic work. Power can be present from shore power, generator, inverter or battery. All power sources must be disabled and secured before performing any service.



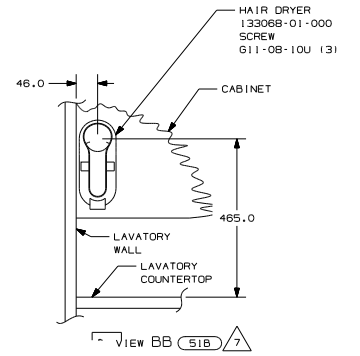
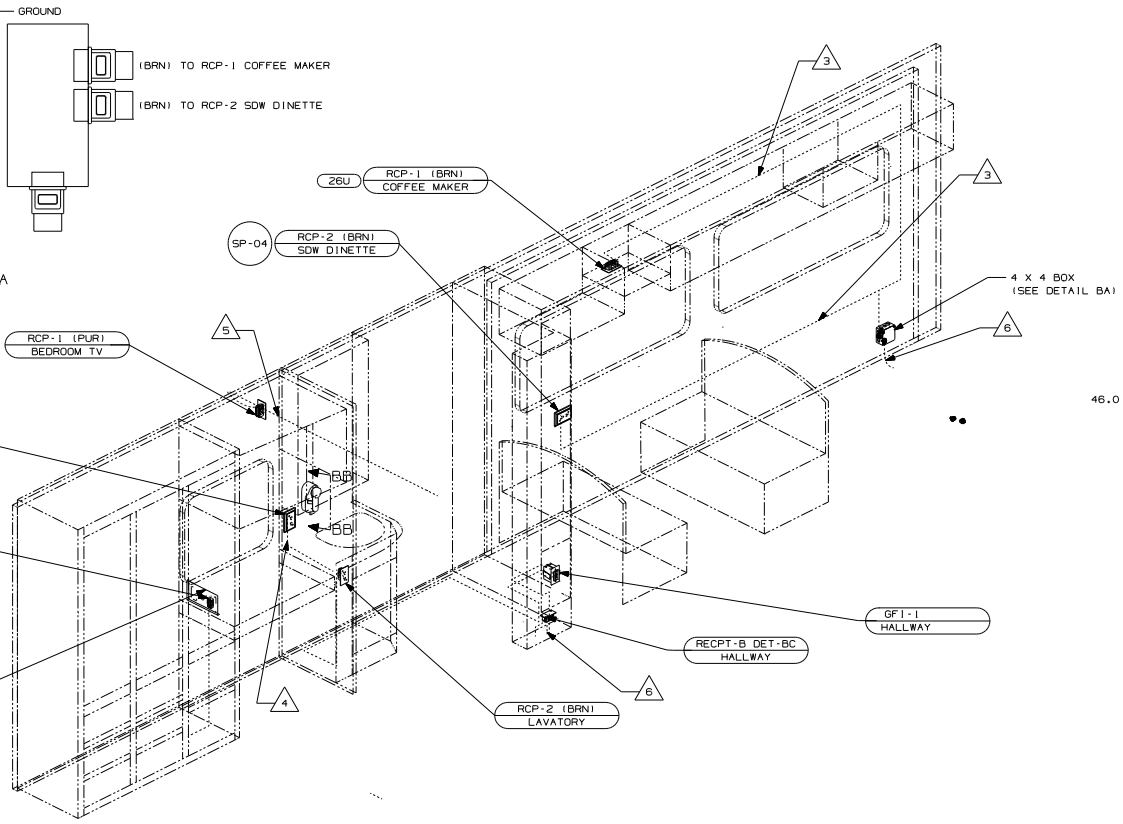
**CAUTION**

If you lack the skills, tools or equipment to perform diagnostic or repair work leave such work to an authorized Winnebago Industries dealer or other qualified shop.





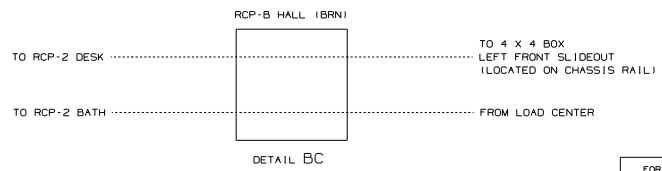
DETAIL BA



- 7 DIMENSIONS ARE TO TOP MOUNTING SCREW ON BACK PLATE.
- 6 WIRE ROUTED THROUGH FLOOR AT THIS POINT.
- 5 WIRE IN ROOF.
- 4 WIRE ROUTED THROUGH SIDEWALL.
- 3 WIRE IN SIDEWALL.

2. ALL WIRES ARE TO BE CLAMPED WITH CLAMP 10495 WITHIN 200MM OF OUTLET BOXES, USE SCREW 667-10-12B.
1. ALL WIRE ROUTED ABOVE FLOOR TO BE CLAMPED WITH CLAMP 10495 AND SCREW 667-10-12B OR TIED WITH WIRE TIE 8343 AS REQUIRED AT LEAST EVERY 700MM OR AS OTHERWISE SPECIFIED.

NOTES:



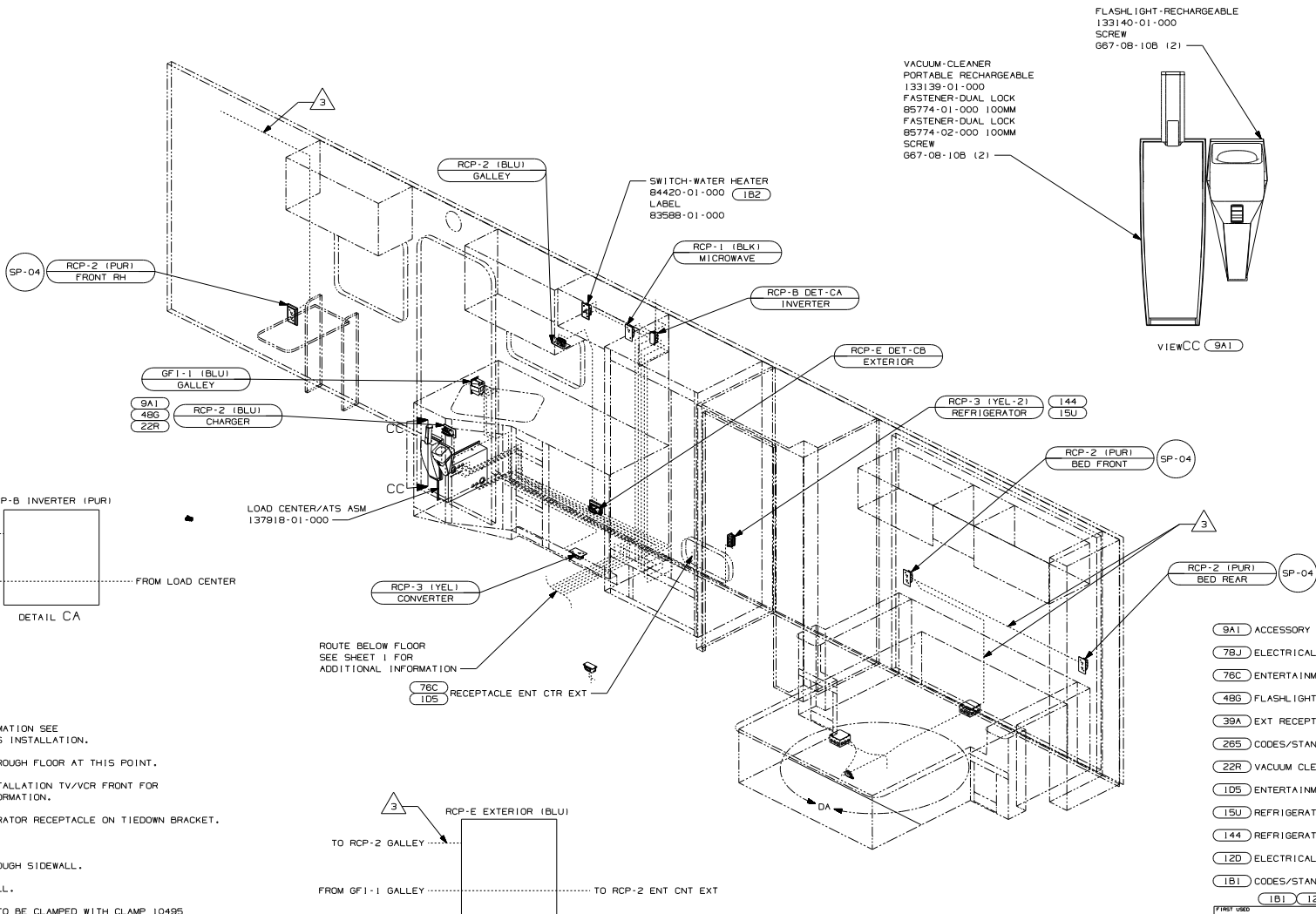
DETAIL BC

- 78J ELECTRICAL SYSTEM - 50 AMP
- S1B HAIR DRYER
- 26U COFFEE MAKER
- 265 CODES/STANDARDS - CSA/CMVSS
- 12D ELECTRICAL SYSTEM - 30 AMP
- 1B1 CODES/STANDARDS - USA

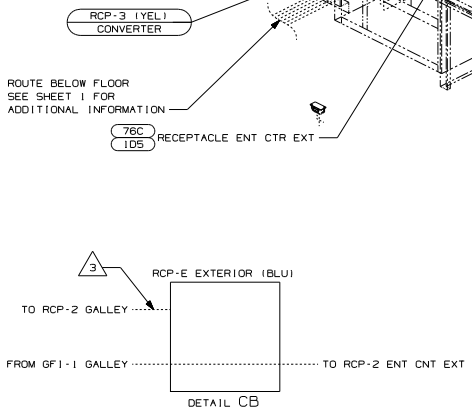
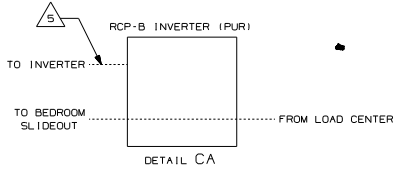
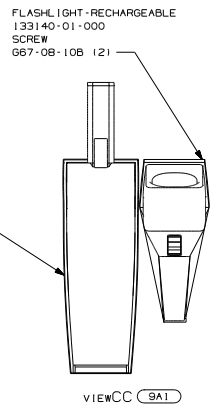
811	12D	265	78J
FIRST ORG 02 G32V			
DO NOT SCALE DRAWING			
TITLE: WIRING INSTL-BODY,110V			
SHEET 2	PART NO 137070		

FOR ELECTRICAL TORQUE SPECIFICATIONS SEE DWG NO. 128783-01-000

X-X FOR ELECTRICAL CALLOUTS SEE DWG NO. 121338-01-000



- VACUUM-CLEANER PORTABLE RECHARGEABLE 133139-01-000
- FASTENER-DUAL LOCK 85774-01-000 100MM
- FASTENER-DUAL LOCK 85774-02-000 100MM
- SCREW 667-08-10B (2)



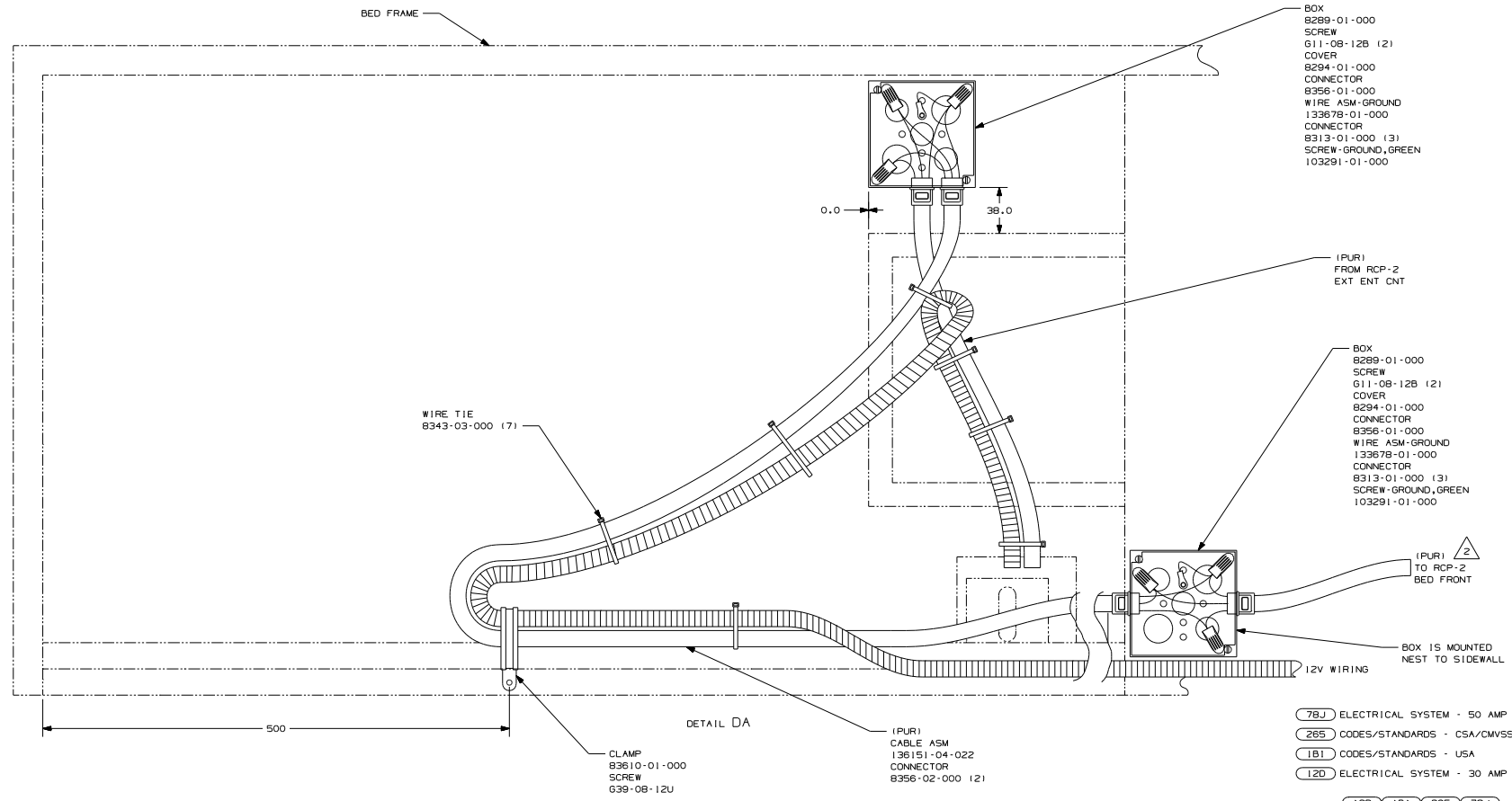
- 9 FOR MORE INFORMATION SEE LOAD CENTER/ATS INSTALLATION.
- 8 WIRE ROUTED THROUGH FLOOR AT THIS POINT.
- 7 SEE WIRING INSTALLATION TV/VCR FRONT FOR ADDITIONAL INFORMATION.
- 6 LOCATE REFRIGERATOR RECEPTACLE ON TIEDOWN BRACKET.
- 5 WIRE IN ROOF.
- 4 ROUTE WIRE THROUGH SIDEWALL.
- 3 WIRE IN SIDEWALL.
2. ALL WIRES ARE TO BE CLAMPED WITH CLAMP 10495 WITHIN 200 MM OF OUTLET BOXES, USE SCREW 667-10-12B.
1. ALL WIRE ROUTED ABOVE FLOOR TO BE CLAMPED WITH CLAMP 10495 AND SCREW 667-10-12B OR TIED WITH WIRE TIE 8343 AS REQUIRED AT LEAST EVERY 700MM OR AS OTHERWISE SPECIFIED.

- 9A1 ACCESSORY PACKAGE
- 7BJ ELECTRICAL SYSTEM - 50 AMP
- 76C ENTERTAINMENT CENTER/EXT CASSETTE
- 48G FLASHLIGHT
- 39A EXT RECEPTACLE DPLX 120VAC
- 265 CODES/STANDARDS - CSA/CMVSS
- 22R VACUUM CLEANER - PORTABLE
- ID5 ENTERTAINMENT CENTER/EXT W/CD
- 15U REFRIGERATOR/FRZR W/ICEMAKER
- 144 REFRIGERATOR - DOUBLE DOOR
- 12D ELECTRICAL SYSTEM - 30 AMP
- 181 CODES/STANDARDS - USA
- 181 12D 265 78J

FOR ELECTRICAL TROUBLE SPECIFICATIONS SEE DRG NO. 128783-01-000

X-X FOR ELECTRICAL CALLOUTS SEE DRG NO. 121339-01-000

FIRST DRG 02 G32V	
DO NOT SCALE DRAWING	
TITLE: WIRING INSTL-BODY,110V	
SHEET 3	PART NO 137070



BOX  
8289-01-000  
SCREW  
611-08-12B (2)  
COVER  
8294-01-000  
CONNECTOR  
8356-01-000  
WIRE ASM-GROUND  
133678-01-000  
CONNECTOR  
8313-01-000 (3)  
SCREW-GROUND, GREEN  
103291-01-000

BOX  
8289-01-000  
SCREW  
611-08-12B (2)  
COVER  
8294-01-000  
CONNECTOR  
8356-01-000  
WIRE ASM-GROUND  
133678-01-000  
CONNECTOR  
8313-01-000 (3)  
SCREW-GROUND, GREEN  
103291-01-000

- (78J) ELECTRICAL SYSTEM - 50 AMP
- (265) CODES/STANDARDS - CSA/CMVSS
- (1B1) CODES/STANDARDS - USA
- (12D) ELECTRICAL SYSTEM - 30 AMP

(12D) (1B1) (265) (78J)

FIRST USED	02 G32V
DO NOT SCALE DRAWING	
TITLE:	WIRING INSTL-BODY, 110V
SHEET 4	PART NO 137070

FOR ELECTRICAL TORQUE SPECIFICATIONS SEE DWG NO 128793-01-000

FOR ELECTRICAL CALLOUTS SEE DWG NO 121339-01-000

2 WIRE IN SIDEWALL

1. WIRE MUST BE ROUTED THROUGH CLAMPS AS SHOWN.

NOTES:

8  
7  
6  
5  
4  
3  
2

D  
C  
B  
A