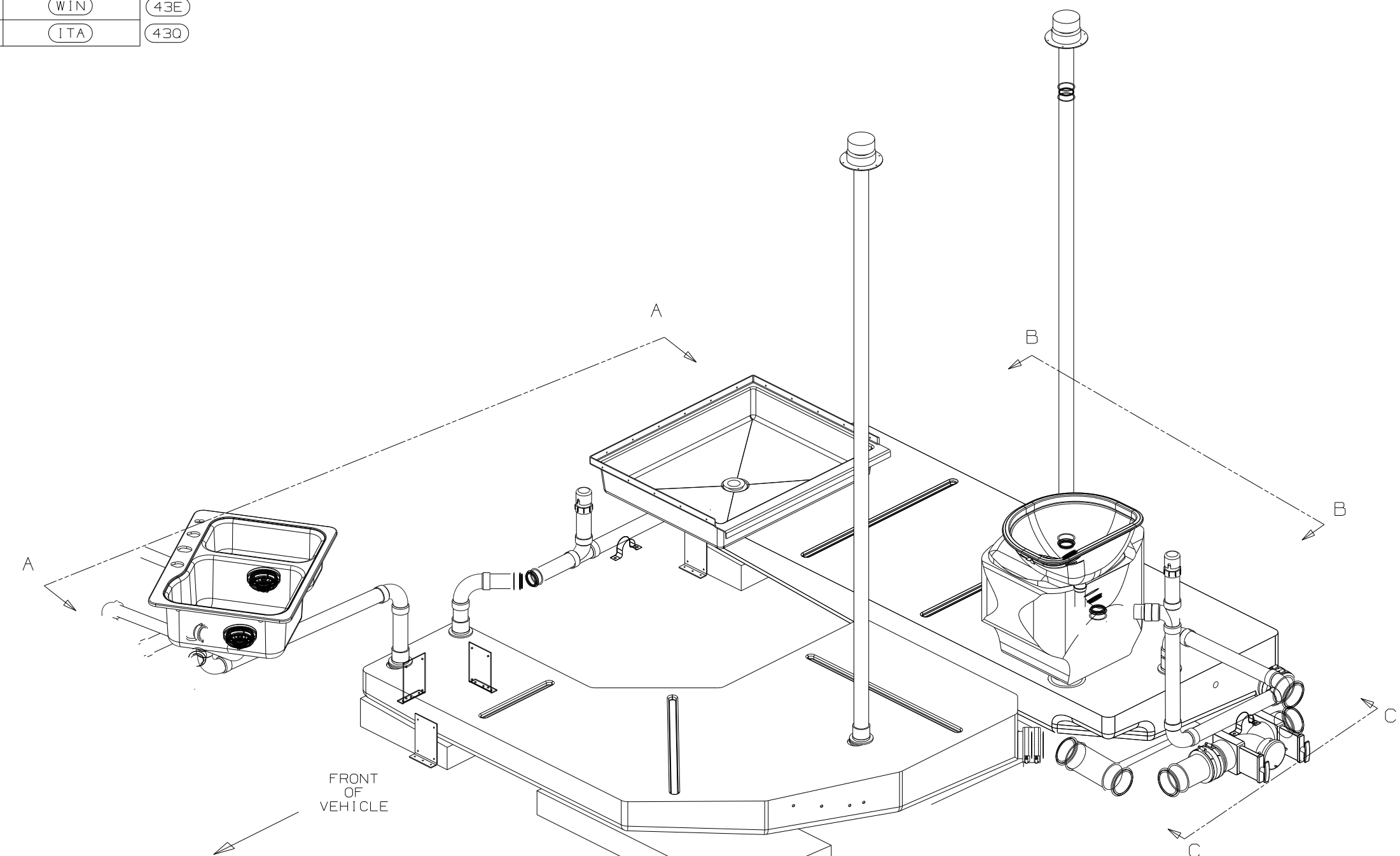


DWG NO	----	
138576-01	(WIN)	(43E)
138576-02	(ITA)	(43Q)

RELEASE	REV DATE	DWG NO	138576
REV ZONE	REVISION RECORD	DATE	DFTR-ORIG



- (WIN) WINNEBAGO ONLY
- (ITA) ITASCA ONLY
- (1B1) CODES/STANDARDS-USA
- (265) CODES/STANDARDS-CSA/CMVSS
- (43E) TOILET-PORCLAIN ROUND
- (43Q) TOILET PORCELAIN

- NOTES:
- 8 SECURE VENT TUBES TO FLOOR USING BRACKET 136878-01-CHT(3) CLAMP 62401-02-000 (3), SCREW G67-1-12B (3).
 - 7 TRIM TO FIT.
 - 6 VENT PIPE MUST PROJECT 51 MIN AND 64 MAX ABOVE ROOF FOR PROPER FIT AND FUNCTION.
 5. SEAL AROUND SHOWER WITH SILICONE.
 4. ALL EXTERIOR OPENINGS AROUND PIPE TO BE SEALED WITH 100744-01-000.
 3. ALL PIPE AND FITTINGS TO BE ASSEMBLED WITH SOLVENT 4020-01-000.
 2. SLOPE OF TRAP ARM MUST BE 6 PER 305 mm.
 1. SLOPE OF HORIZONTAL PIPING TO BE 6 PER 305 mm.

(X-X)
FOR DRAINAGE CALLOUTS SEE DWG NO. 116229-01-000

WINNEBAGO		COPYRIGHT 2002 WINNEBAGO INDUSTRIES, INC.	
DFTR	ORIG. DATE	ALL DIMENSIONS ARE IN MILLIMETERS	
CHKR		FIRST USED	
P.E.		02 G30Y	
M.E.		UNSPECIFIED TOLERANCES ARE:	
DSNR		MATERIAL:	
		WHOLE DIM (X)	: ?
		ONE-PLACE (X.X)	: :
		TWO-PLACE (X.XX)	: :
		ANGLE	: :
THIRD ANGLE PROJECTION		DO NOT SCALE DRAWING	
		TITLE: DRAINAGE SYSTEM INSTL	
SHEET 1 OF 3		PART NO 138576	

WASTE-CONT, DBL SINK
91980-01-000

SINK-SMC,CBL L/S BASIN
136828-03-CHT (US/CAN)
STRAINER
92303-01-000 (2)
ANGLE
140002-01-CHT (10)
SCREW
G67-06-08B (8)
WASHER-RUBBER
127440-02-CHT (2)
SEAL (A/R)

SINK
136639-01-CHT
ANGLE
131914-06-CHT
TAILPIECE
106116-01-CHT
GASKET
106116-02-CHT
SCREW
G67-08-10U (6)
SEAL (A/R)

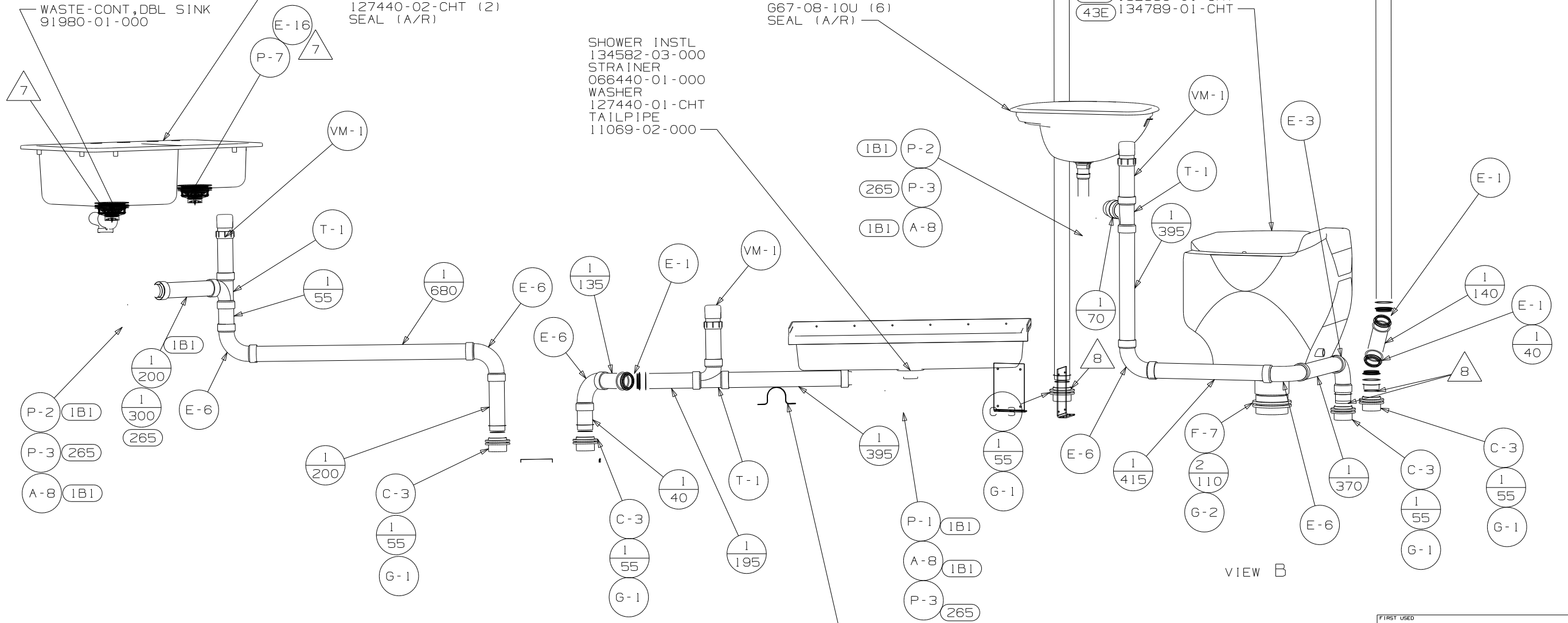
SHOWER INSTL
134582-03-000
STRAINER
066440-01-000
WASHER
127440-01-CHT
TAILPIPE
11069-02-000

TOILET-AURORA CHINA
430 132389-01-CHT
43E 134789-01-CHT

1B1 P-2
265 P-3
1B1 A-8

1 P-1 1B1
1 A-8 1B1
1 P-3 265

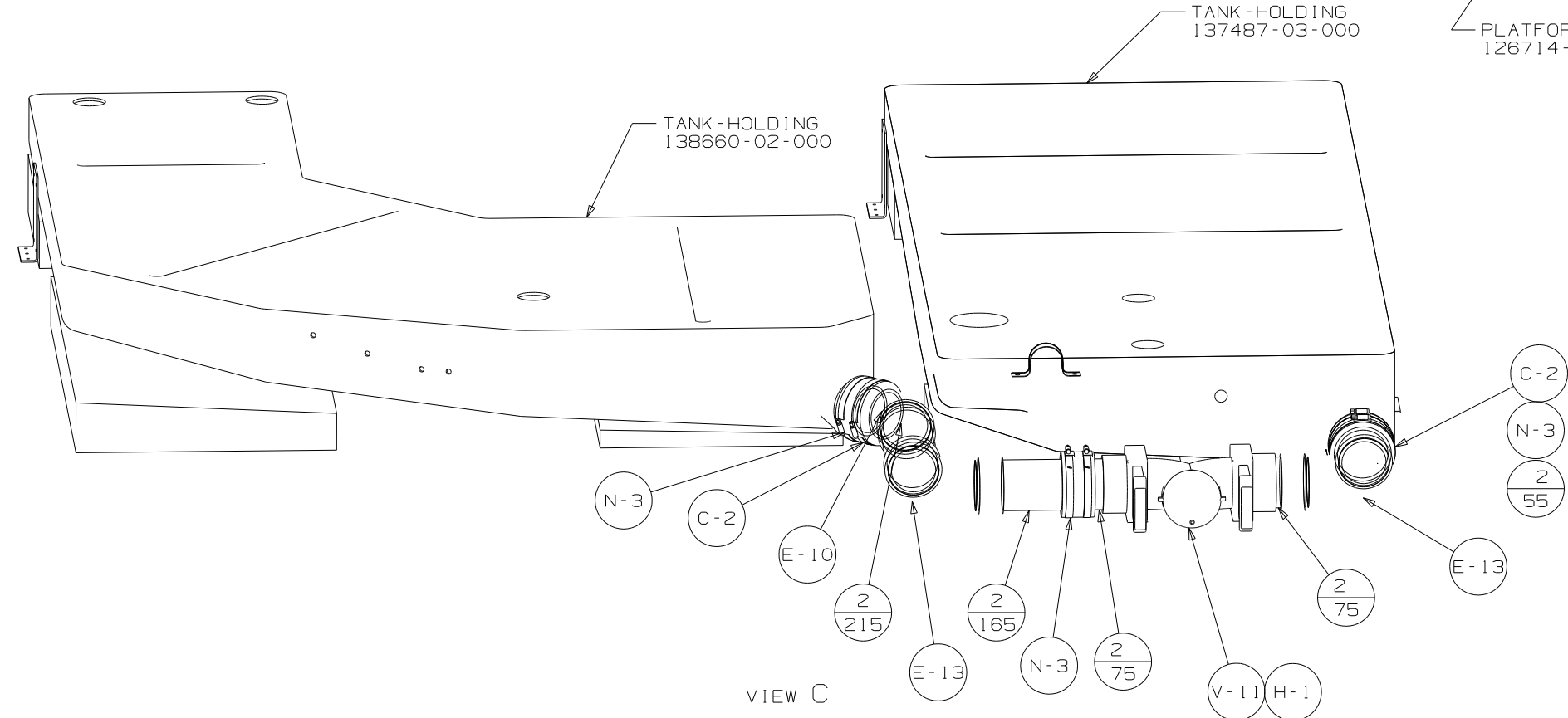
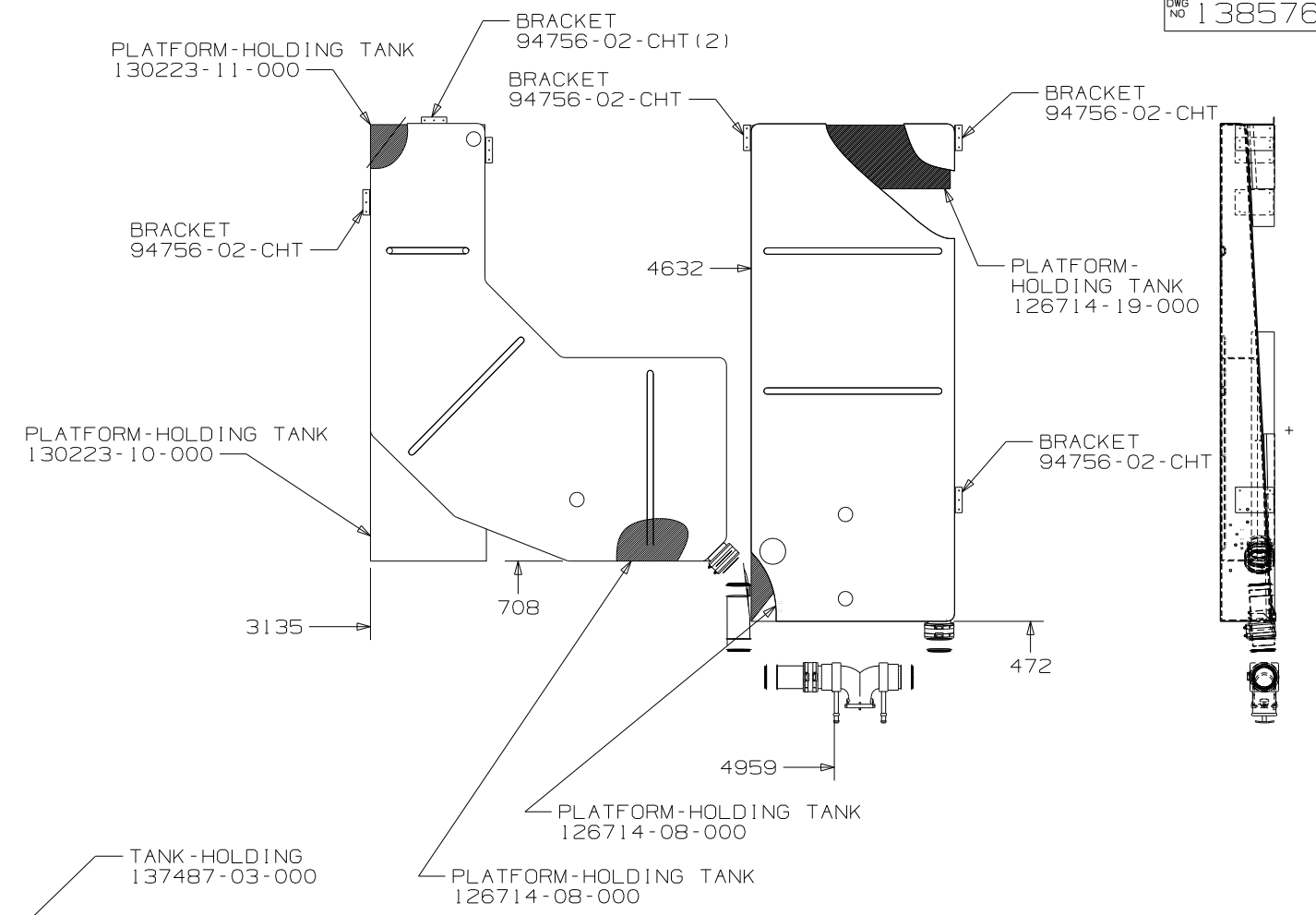
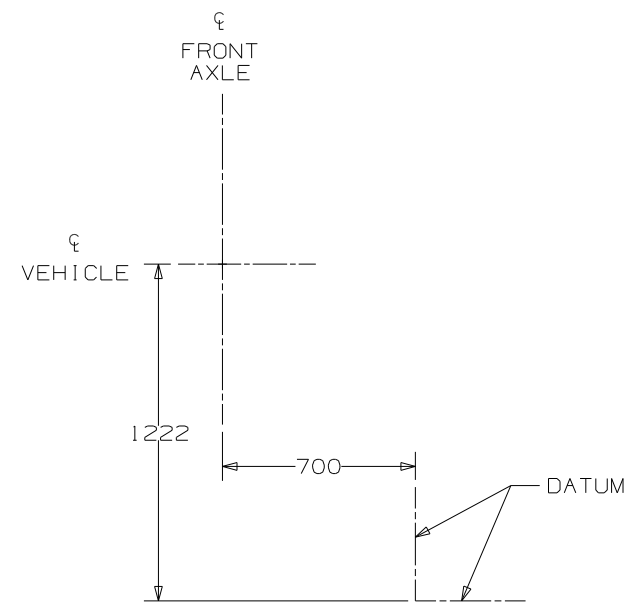
STRAP-CONDUIT
008406-01-000 (2)
SCREW
G67-10-12B (4)



VIEW A

VIEW B

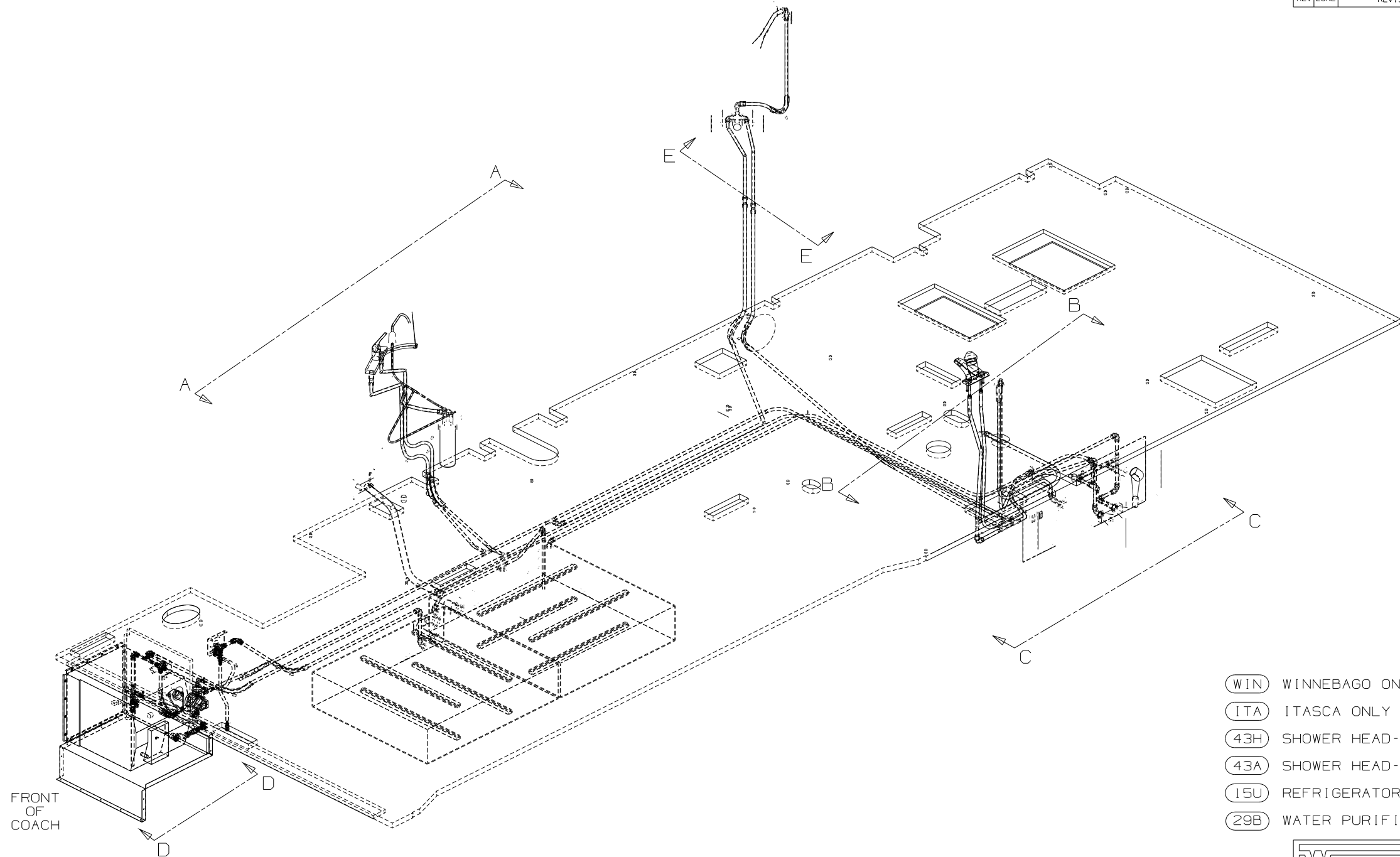
FIRST USED	02 G30Y
DO NOT SCALE DRAWING	
TITLE	DRAINAGE SYSTEM INSTL
SHEET 2	PART NO 138576



FIRST USED	02 G30Y
DO NOT SCALE DRAWING	
TITLE	DRAINAGE SYSTEM INSTL
SHEET 3	PART NO 138576

DWG NO	----
138607-01	(WIN)
138607-02	(ITA)

RELEASE	REV DATE	DWG NO
A		138607
REV ZONE	REVISION RECORD	DATE
		DFTR-ORIG

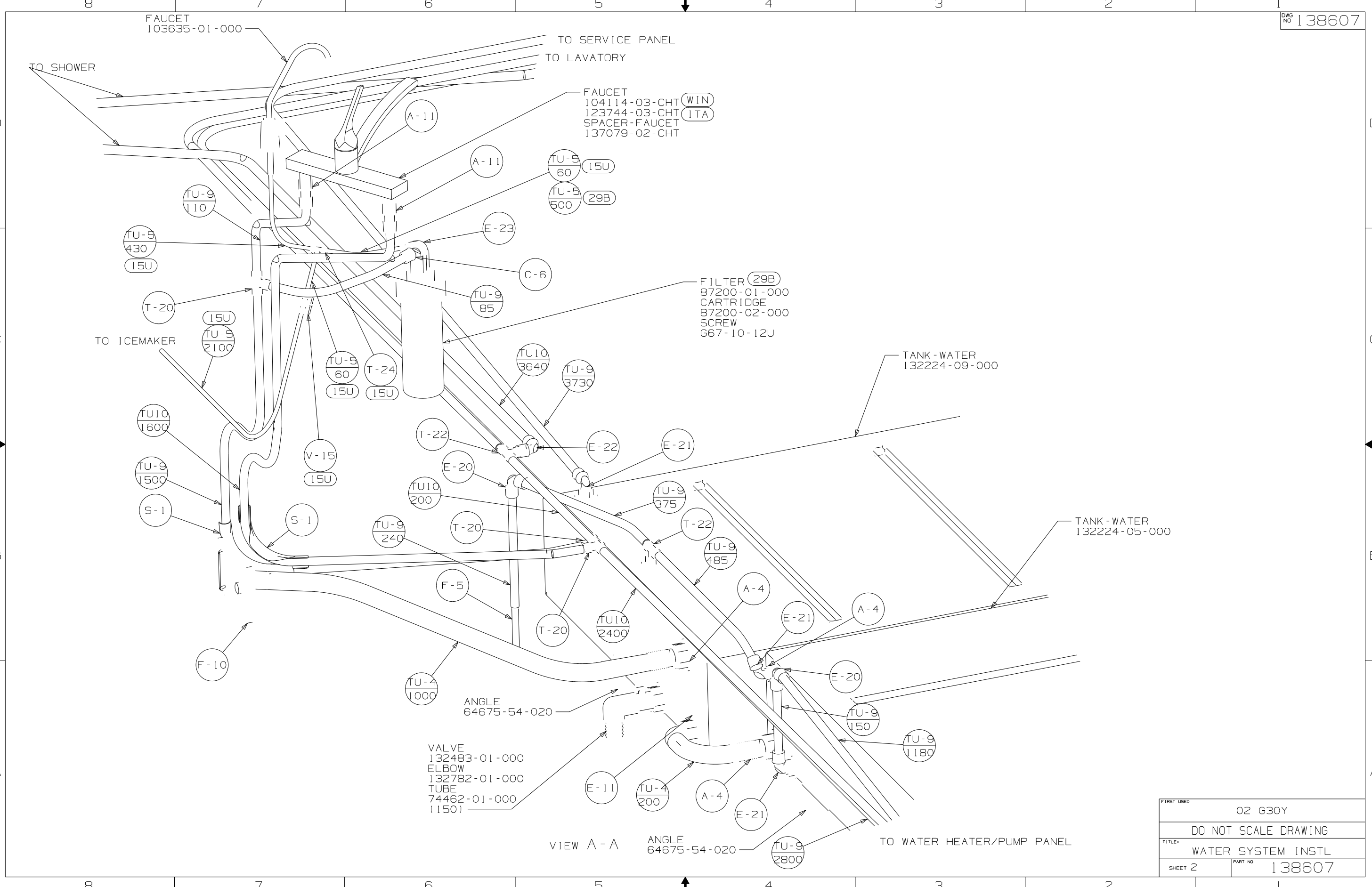


- (WIN) WINNEBAGO ONLY
- (ITA) ITASCA ONLY
- (43H) SHOWER HEAD-HAND HELD
- (43A) SHOWER HEAD-FIXED
- (15U) REFRIGERATOR/FRZR W/ICEMAKER
- (29B) WATER PURIFIER

- NOTES:
- 6 ADD TEFLON TAPE 10405-01-000.
 - 5 ADD TEFLON TAPE 10405-02-000.
 - 4 FLUSHING SYSTEM REQUIRES 125697-06-000 INSTRUCTION SHEET.
 - 3. ALL TUBING TO BE SECURED AT 1200 INTERVALS MAXIMUM WITH CLAMP 10495-01-000 OR CLIP 9151-01-000 AND SCREW 667-10-12B.
 - 2. TUBING TO BE INSTALLED WITH SUFFICIENT SLOPE TO PROVIDE DRAINAGE TO NEAREST VALVE.
 - 1. PLASTIC FITTINGS TO BE SEALED WITH SEALANT 84456-01-000.

(X-X)
FOR
WATER
CALLOUTS
SEE DWG NO
116230-01-000

WINNEBAGO		COPYRIGHT 2002 WINNEBAGO INDUSTRIES, INC.	
DFTR	ORIG. DATE	ALL DIMENSIONS ARE IN MILLIMETERS	
CHKR		FIRST USED	
P.E.		02 G30Y	
M.E.		UNSPECIFIED TOLERANCES ARE:	
DSNR		MATERIAL:	
		WHOLE DIM (X)	: 7
		ONE-PLACE (X.X)	:
		TWO-PLACE (X.XX)	:
		ANGLE	:
THIRD ANGLE PROJECTION		DO NOT SCALE DRAWING	
		TITLE: WATER SYSTEM INSTL	
SHEET 1 OF 4		PART NO 138607	



FAUCET
103635-01-000

TO SERVICE PANEL
TO LAVATORY

FAUCET
104114-03-CHT (WIN)
123744-03-CHT (ITA)
SPACER-FAUCET
137079-02-CHT

(WIN)
(ITA)

(TU-9)
60 (15U)
(TU-9)
500 (29B)

FILTER (29B)
87200-01-000
CARTRIDGE
87200-02-000
SCREW
G67-10-12U

TANK-WATER
132224-09-000

TANK-WATER
132224-05-000

VALVE
132483-01-000
ELBOW
132782-01-000
TUBE
74462-01-000
(150)

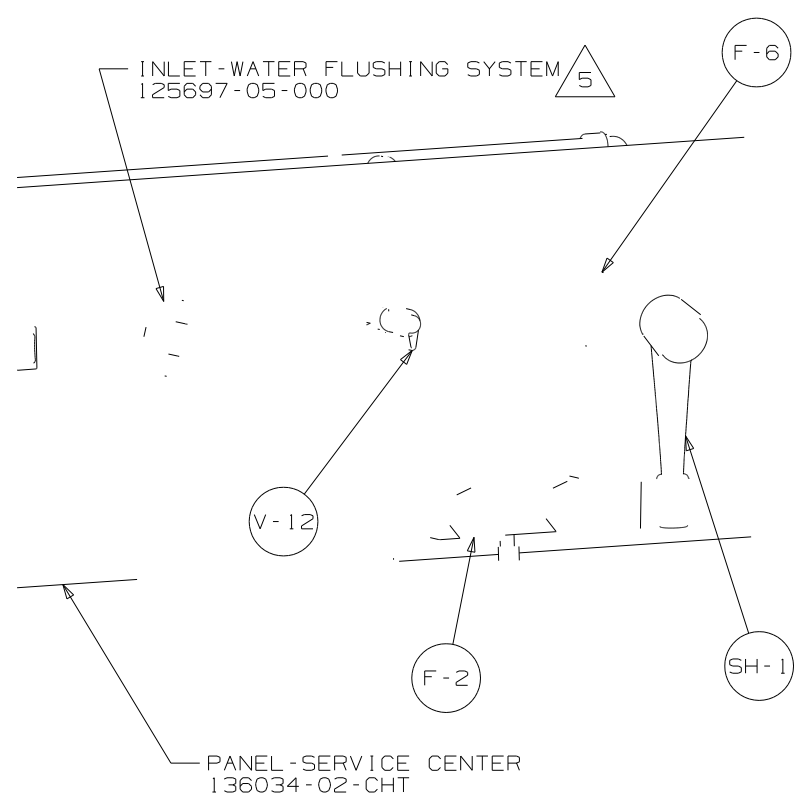
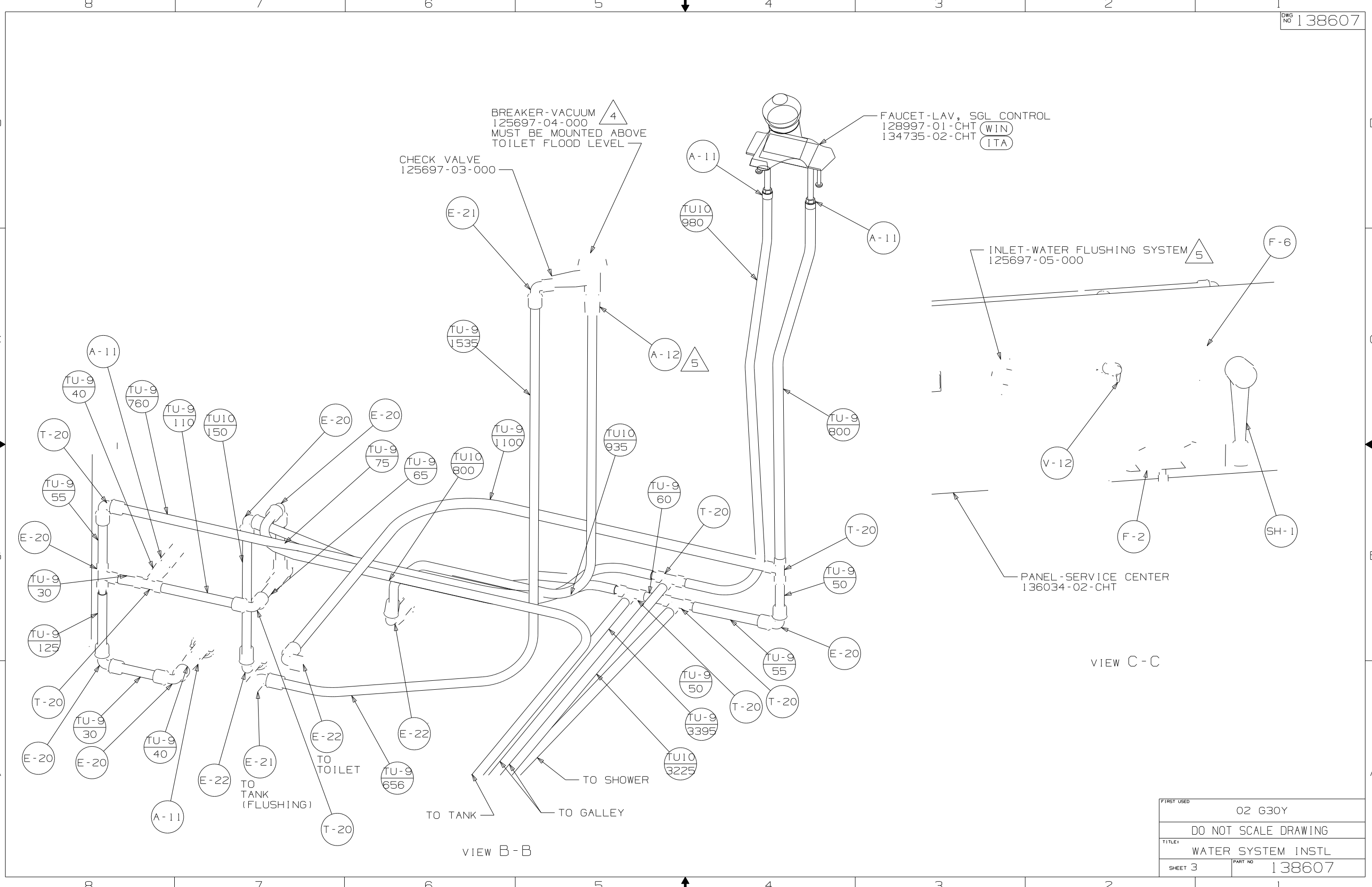
ANGLE
64675-54-020

VIEW A-A

ANGLE
64675-54-020

TO WATER HEATER/PUMP PANEL

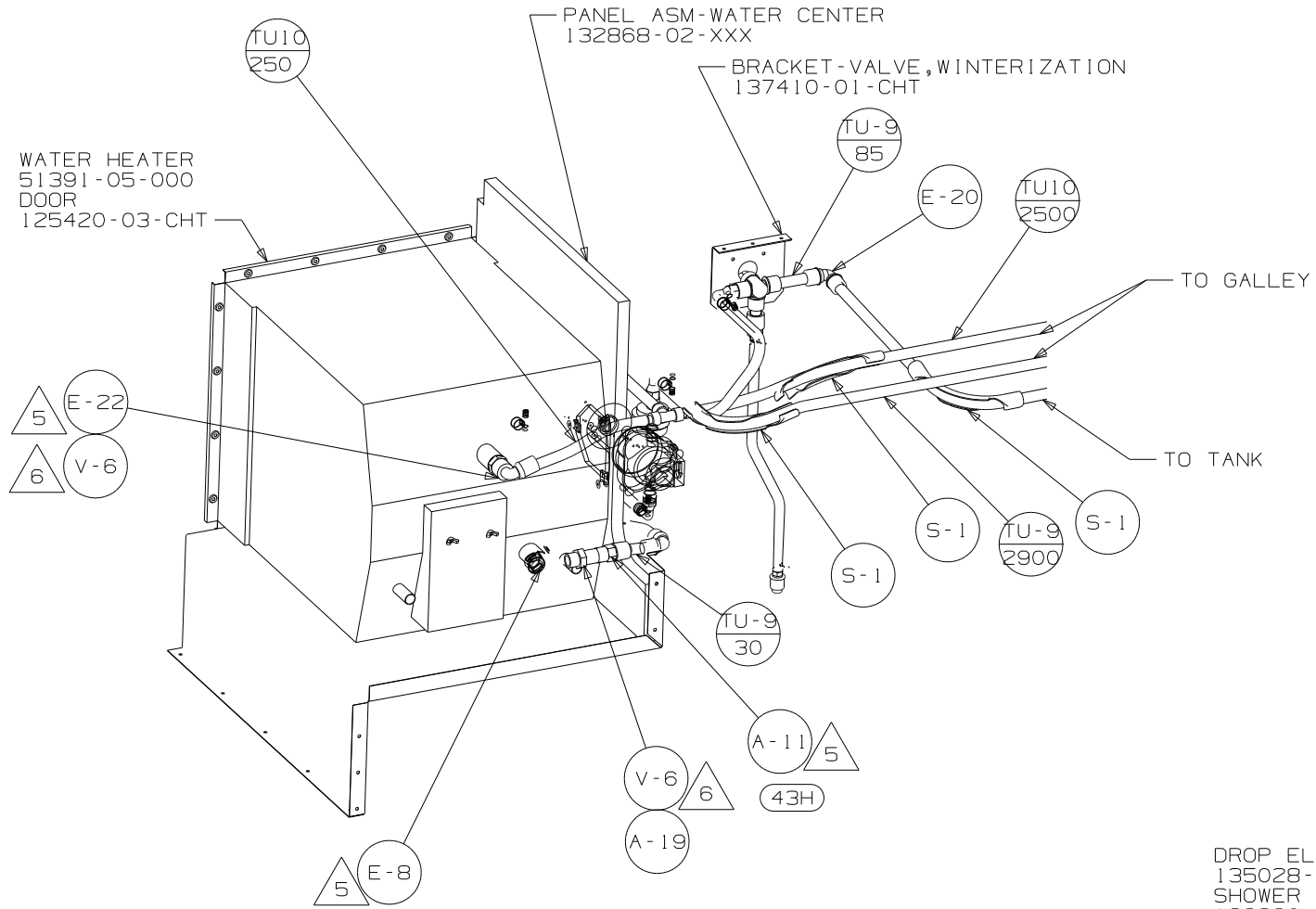
FIRST USED	02 G30Y
DO NOT SCALE DRAWING	
TITLE	WATER SYSTEM INSTL
SHEET 2	PART NO 138607



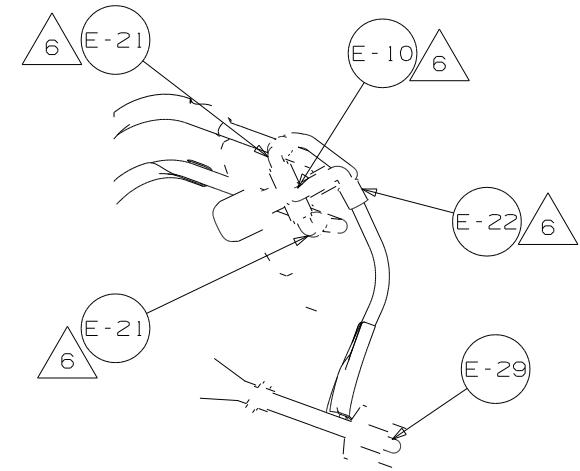
VIEW B-B

VIEW C-C

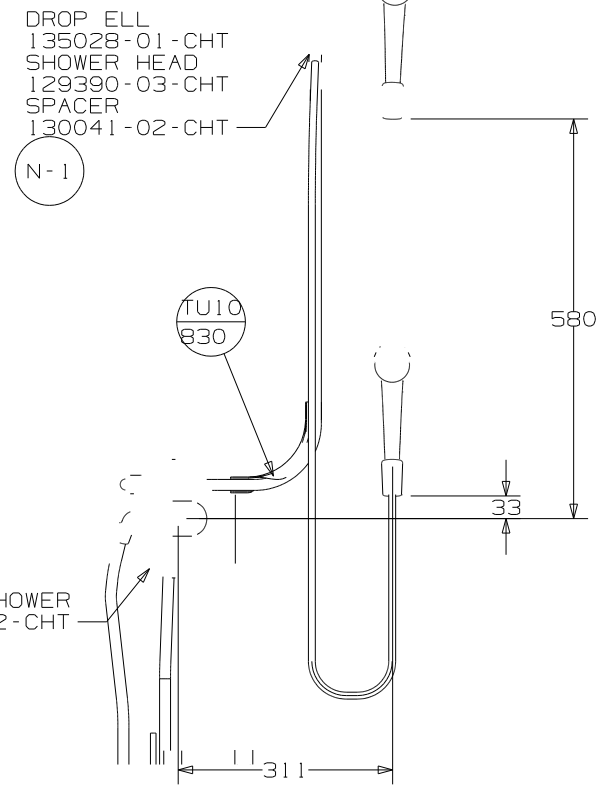
FIRST USED	02 G30Y
TITLE	DO NOT SCALE DRAWING
	WATER SYSTEM INSTL
SHEET 3	PART NO 138607



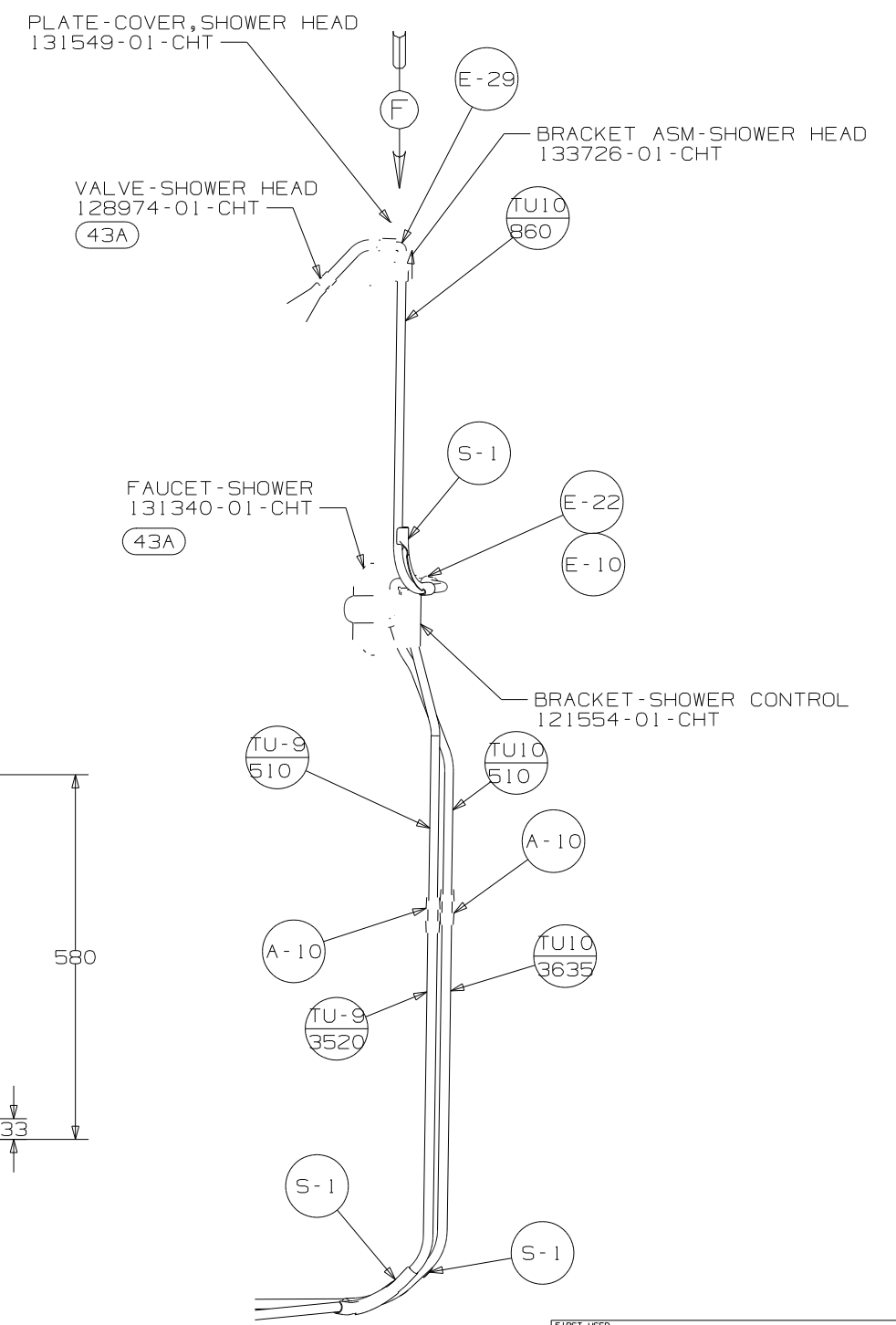
VIEW D-D



VIEW F



VIEW E-E



VIEW E-E 43A

FIRST USED	02 G30Y
TITLE	DO NOT SCALE DRAWING
TITLE	WATER SYSTEM INSTL
SHEET 4	PART NO 138607