



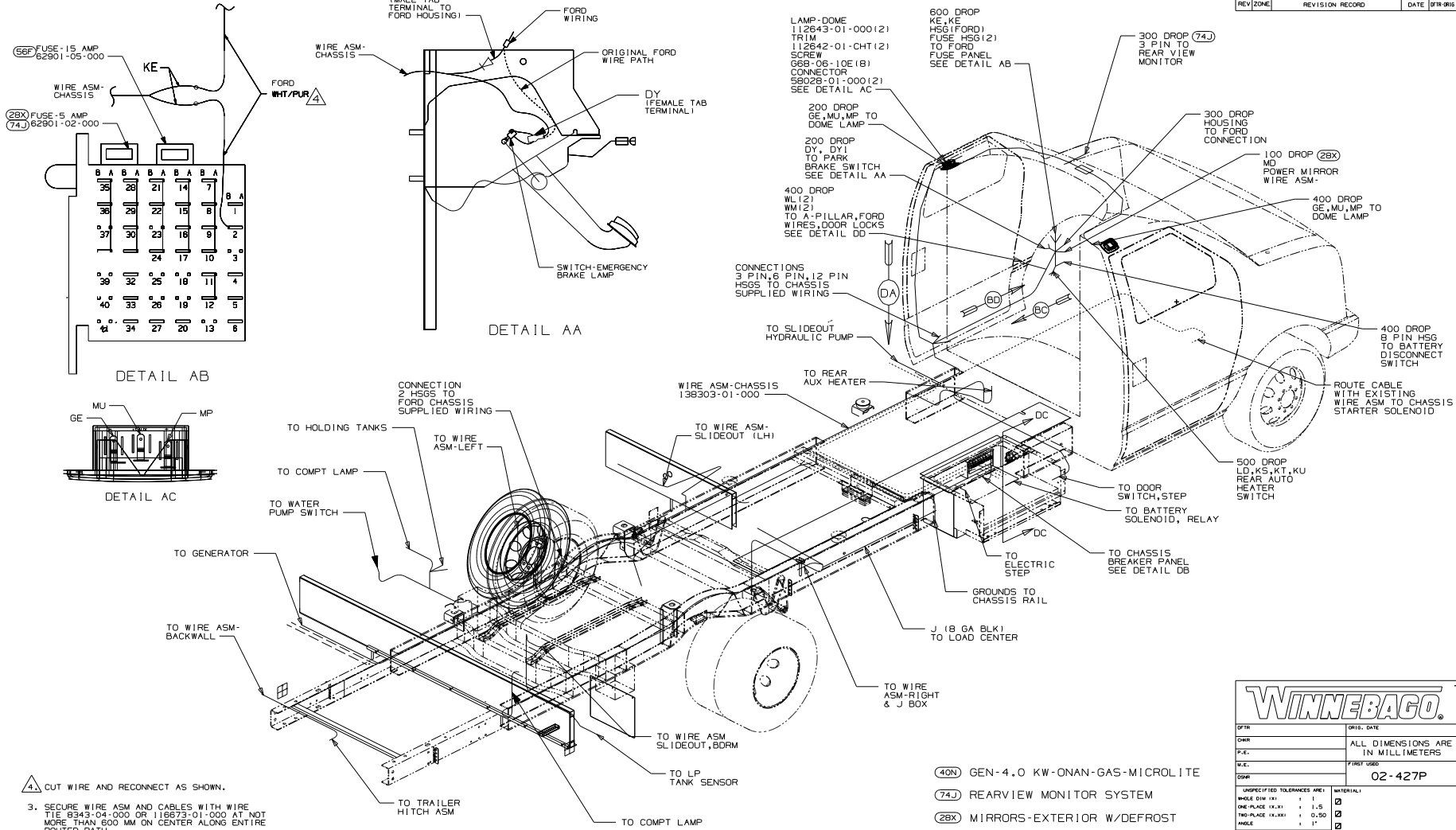
DANGER

Danger of electrical shock, burns or death. Always remove all power sources before attempting any repair, service or diagnostic work. Power can be present from shore power, generator, inverter or battery. All power sources must be disabled and secured before performing any service.



CAUTION

If you lack the skills, tools or equipment to perform diagnostic or repair work leave such work to an authorized Winnebago Industries dealer or other qualified shop.



△ CUT WIRE AND RECONNECT AS SHOWN.

3. SECURE WIRE ASM AND CABLES WITH WIRE TIE B343-04-000 OR I1673-01-000 AT NOT MORE THAN 500 MM ON CENTER ALONG ENTIRE ROUTED PATH.

2. SECURE CONDUIT 41953-01-000 OVER ALL WIRE IN CONTACT WITH SHARP EDGES.

1. LEGEND: FORD WIRING
 WINNEBAGO WIRING CABLE.

FOR ELECTRICAL CALLOUTS SEE DWG NO. 121339-01-000

FOR ELECTRICAL TORQUE SPECIFICATIONS SEE DWG NO. 128783-01-000

- (40N) GEN-4.0 KW-ONAN-GAS-MICROLITE
- (74J) REARVIEW MONITOR SYSTEM
- (28X) MIRRORS-EXTERIOR W/DEFROST
- (IE2) ENTRANCE STEP-ELECTRIC
- (18E) FORD CHASSIS 14,050 LB.GVWR
- (56F) HEATER-AUXILIARY AUTOMOTIVE

WINNEBAGO

QTR ORG. DATE
 DWR ALL DIMENSIONS ARE IN MILLIMETERS
 P.E. FIRST USED
 W.E. PART NO 02-427P

UNSPECIFIED TOLERANCES ARE:
 FINISH DIM ± .1
 ONE-PLACE (X,XX) ± 1.5
 TWO-PLACE (X,XXX) ± 0.50
 HOLE ± .1

THIRD ANGLE PROJECTION

DO NOT SCALE DRAWING

TITLE: WIRING INSTL-CHASSIS
 SHEET 1 of 4 PART NO 138673

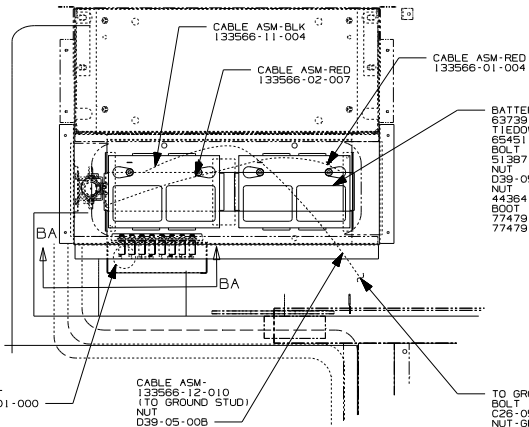
56F

SWITCH-REAR AUTO HEATER
87202-01-000
WASHER LK
E15-08-008

SWITCH-AUX START
109557-09-000
ACTUATOR-SWITCH
109396-07-CHT
PLATE
81994-07-000
NUT
112722-01-CHT (2)

WIRES KE,LR,LS

VIEW BC



DETAIL BB

40F

CIRCUIT BREAKER
93654-03-000
(20 AMP)
SCREW
652-06-04B

CIRCUIT BREAKER
93654-01-000
(6 AMP)
SCREW
652-06-04B

BUSS BAR
87949-01-000
SCREW
652-06-06B(12)

CIRCUIT BREAKER
93655-01-000
(25 AMP)
SCREW
652-06-04B

CIRCUIT BREAKER
93655-02-000
(30 AMP)
SCREW
652-06-04B

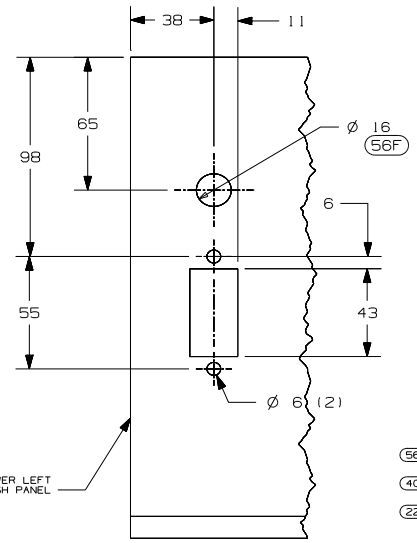
CIRCUIT BREAKER
93654-01-000(13)
(6 AMP)

CIRCUIT BREAKER
93654-02-000
(15 AMP)

BUSS BAR
87949-02-000
SCREW
652-06-06B(13)

VIEW BA-BA

WIRE ASM-
CHASSIS
WIRE ASM-PANEL
131799-05-000

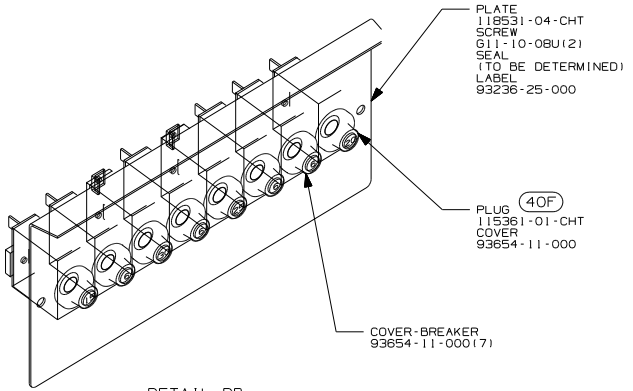


VIEW BD

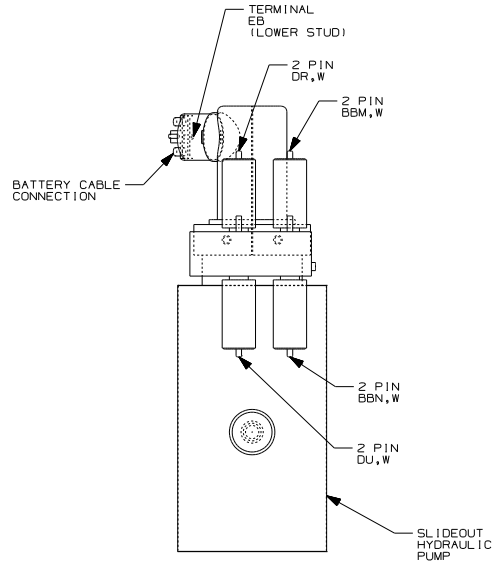
△ LEAD IS MARKED WITH YELLOW TAPE.
△ LEAD IS MARKED WITH RED TAPE.

56F HEATER-AUXILIARY AUTOMOTIVE
40F INVERTER-DC/AC-130W
22W BATTERY-TWO

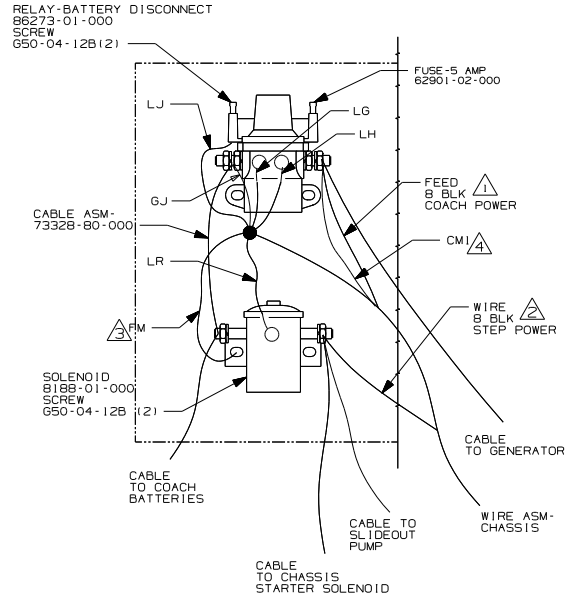
FIGURE	02-427P
DO NOT SCALE DRAWING	
TITLE: WIRING INSTL-CHASSIS	
SHEET 2	PART NO 138673



DETAIL DB

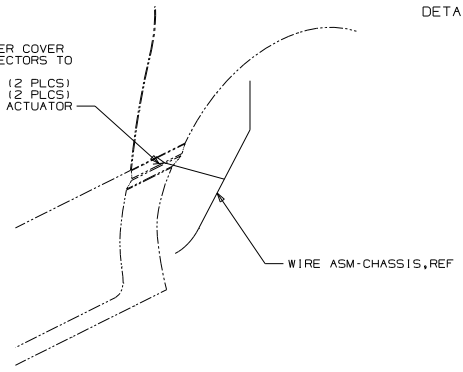


VIEW DA (TOP VIEW)



DETAIL DC-DC

REMOVE A-PILLAR LOWER COVER TO ACCESS FORD CONNECTORS TO DOOR ASM.
 CONNECT PK/OR TO WL (2 PLCS)
 CONNECT PK/BK TO WM (2 PLCS)
 FOR POWER DOOR LOCK ACTUATOR



DETAIL DD

- 4. ATTACH TO RELAY WITH (40F).
- 3. SECURE WITH SOLENOID MOUNTING SCREW.
- 2. LEAD IS MARKED WITH YELLOW TAPE.
- 1. LEAD IS MARKED WITH RED TAPE.

(40F) INVERTER-DC/AC-130 WATT

FIRST USED	02-427P
DO NOT SCALE DRAWING	
TITLE: WIRING INSTL-CHASSIS	
SHEET 4	PART NO 138673