

6. FOR CAN UNITS EACH HOLDING TANK SHALL HAVE A CSA APPROVAL STAMPED NEAR THE IAMPO APPROVAL.
5. EXPOSED PIPE ABOVE ROOF TO BE PAINTED 37163-01-000.
4. ALL EXTERIOR OPENINGS AROUND PIPE TO BE SEALED WITH 69637-01-000.
3. ALL PIPE AND FITTINGS TO BE ASSEMBLED WITH SOLVENT 4020-01-000.
2. SLOPE OF TRAP ARM MUST BE 6 PER 305.
1. SLOPE OF HORIZONTAL PIPING TO BE 6 PER 305 MIN.

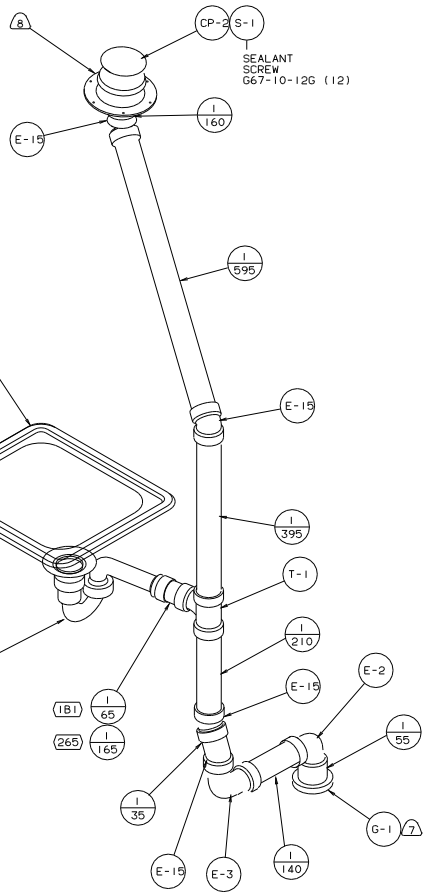
- (10) PLACE GASKET BETWEEN FLOOR AND BOTTOM OF TANK.
9. SECURE PIPES TO CABINET USING WIRE TIE 108046-02-000 AND SCREW 067-10-120 (8).
- (8) VENT PIPE MUST PROJECT 51 MIN AND 63.5 MAX ABOVE ROOF FOR PROPER FIT AND FUNCTION.
- (7) SEE DWG 61607-01-000 FOR INSTALLATION OF GROMMET.

- (265) CODES/STANDARDS-CSA/CMVSS
 (1B1) CODES STANDARDS/USA
 (1A7) SHOWER PACKAGE-WITHOUT
 (140) SHOWER PACKAGE

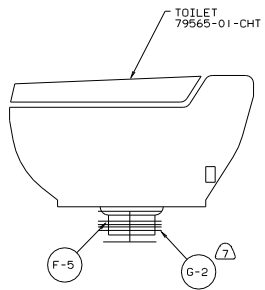
(X-X) FOR DRAINAGE CALLOUTS SEE DWG NO. 116229-01-000

COPYRIGHT 2002 WINNERVACO INDUSTRIES, INC.		WINNERVACO		01 222HD
QTY	DATE	UNSPECIFIED TOLERANCES ARE:	MATERIAL:	
CHG	DATE	WHOLE DIM (IN)	F R	
PIE	DATE	ONE-PLACE (IN.XI)	.	
IN E	DATE	TWO-PLACE (IN.XXX)	.	
CON	DATE	THIRD PLACE PROJECTION	☺	
LANE# 222HD	TITLE: DRAINAGE SYSTEM INSTL	135954		
DIA #	SCALE: NONE	30 MET SCALE DRAWING	SHEET 1 OF 3	1
ALL DIMENSIONS ARE IN MILLIMETERS				

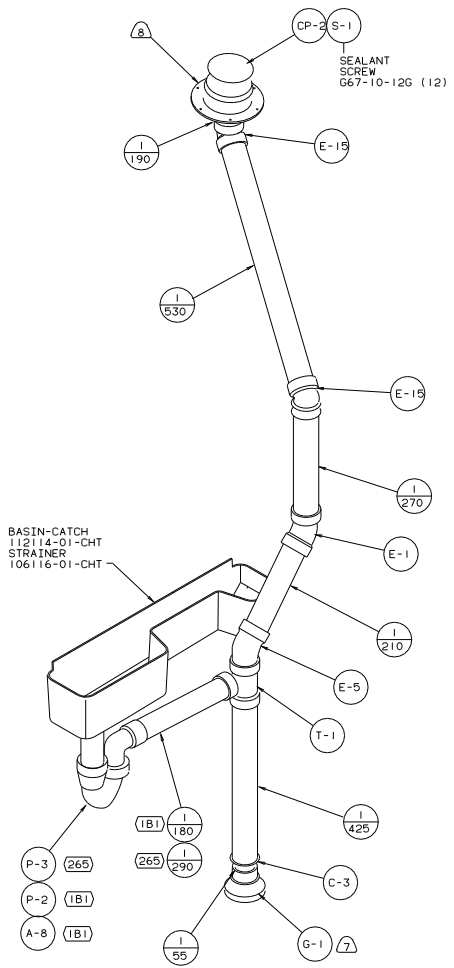
SINK
 11029-03-000
 STRAINER
 66437-02-000
 SEALER
 69640-03-000
 TAILPIECE
 11069-03-000
 ANGLE
 107659-01-000(12)
 SCREW
 667-10-16B(8)



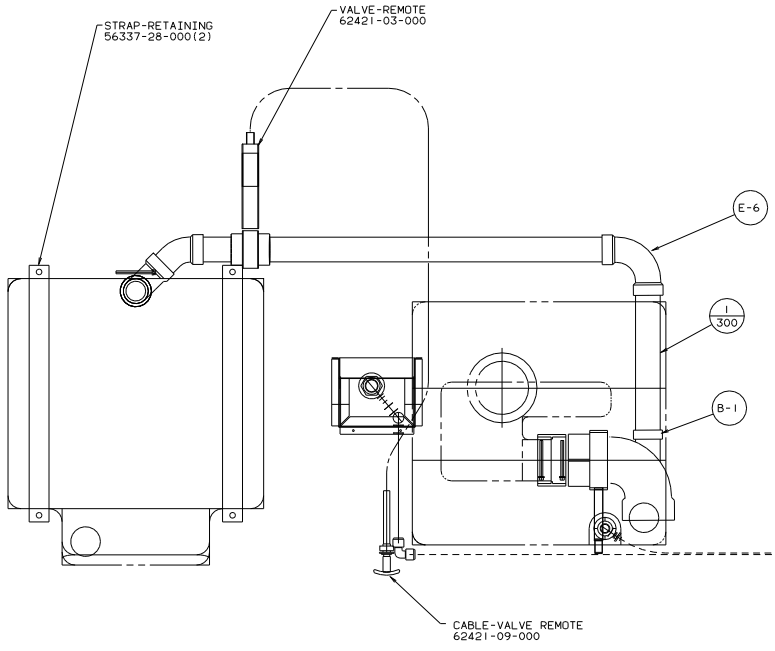
DETAIL A



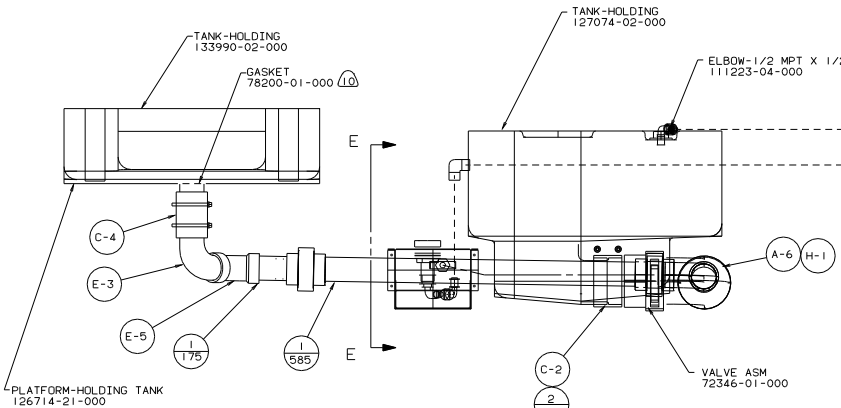
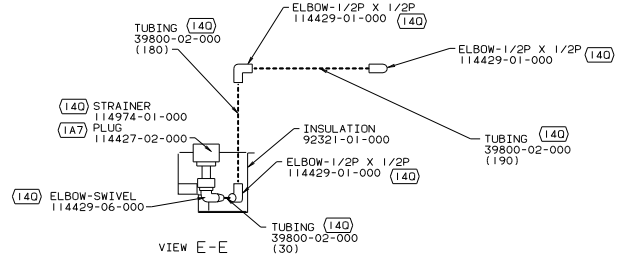
DETAIL B



DETAIL C



VIEW D-D



VIEW F-F

