



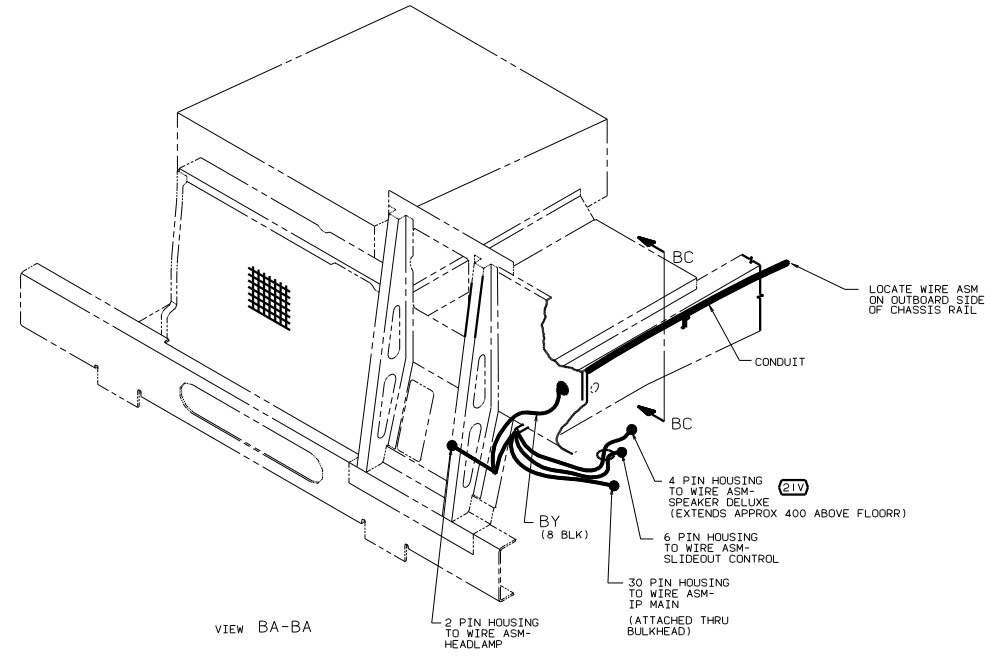
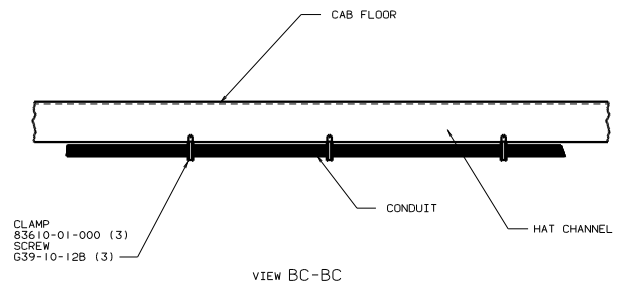
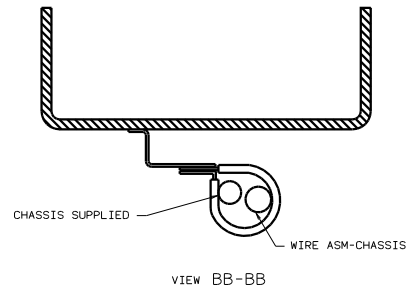
DANGER

Danger of electrical shock, burns or death. Always remove all power sources before attempting any repair, service or diagnostic work. Power can be present from shore power, generator, inverter or battery. All power sources must be disabled and secured before performing any service.



CAUTION

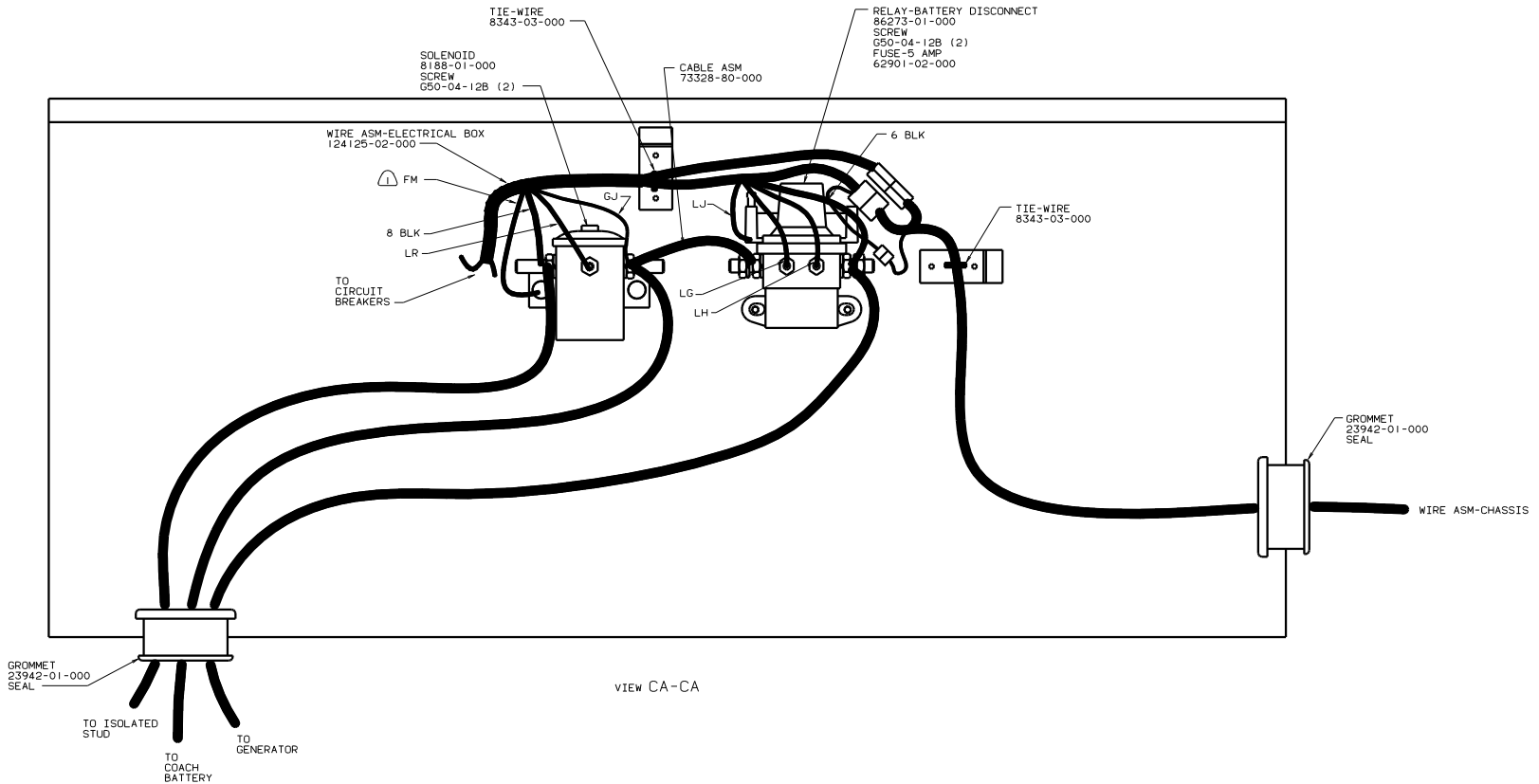
If you lack the skills, tools or equipment to perform diagnostic or repair work leave such work to an authorized Winnebago Industries dealer or other qualified shop.



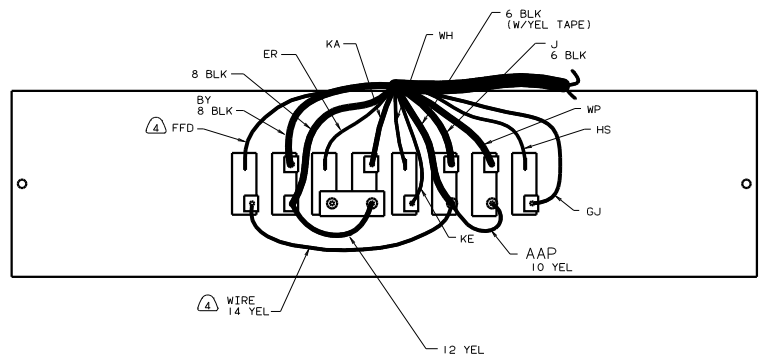
- (21V) SOUND SYSTEM DELUXE
- (265) CODES/STANDARDS-CSA/CMVSS
- (16M) FORD CHASSIS 20,500#/V10 ENG
- (1B1) CODES/STANDARDS USA

FOR ELECTRICAL TORQUE SPECIFICATIONS SEE DWG NO. 128783-01-000

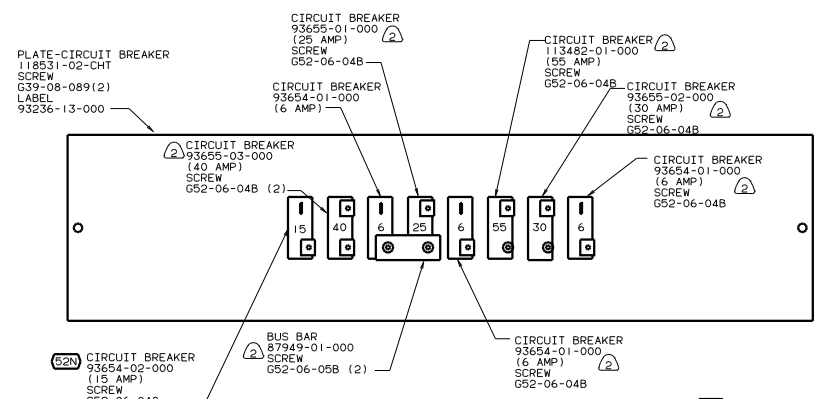
TITLE: WIRING INSTL-CHASSIS	
NO. OF SHEETS: 3	DES. NO. 136127
SHEET 2 OF 3	1.E



VIEW CA-CA



VIEW CB-CB (WIRING)



VIEW CB-CB (HARDWARE)

- NOTES:
- ④ TIE BACK TO LOOM WITHOUT 52N.
 - ③ WITHOUT 52N.
 - ② ADD LOCK WASHER OME02B-04-071 1 PER SCREW
 - ① SECURE WITH SOLENOID MOUNTING SCREW.

- ⑤2N CIRCUIT BREAKER 93654-02-000 (15 AMP) SCREW G52-06-04B
- ② CIRCUIT BREAKER 93655-03-000 (40 AMP) SCREW G52-06-04B (2)
- ② BUS BAR 87949-01-000 SCREW G52-06-05B (2)
- ② CIRCUIT BREAKER 93654-01-000 (6 AMP) SCREW G52-06-04B

FOR ELECTRICAL TORQUE SPECIFICATIONS SEE DWG NO. 128783-01-000

- ⑤2N AWNING - PATIO, ELECTRIC
- ②65 CODES/STANDARDS-CSA/CMVSS
- ①6M FORD CHASSIS 20.500#/V10 ENG
- ①B1 CODES/STANDARDS USA