



DANGER

Danger of electrical shock, burns or death. Always remove all power sources before attempting any repair, service or diagnostic work. Power can be present from shore power, generator, inverter or battery. All power sources must be disabled and secured before performing any service.

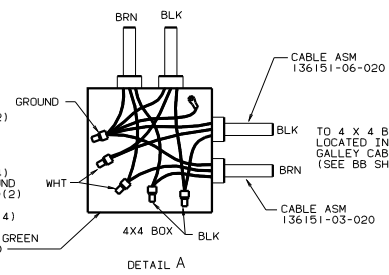


CAUTION

If you lack the skills, tools or equipment to perform diagnostic or repair work leave such work to an authorized Winnebago Industries dealer or other qualified shop.

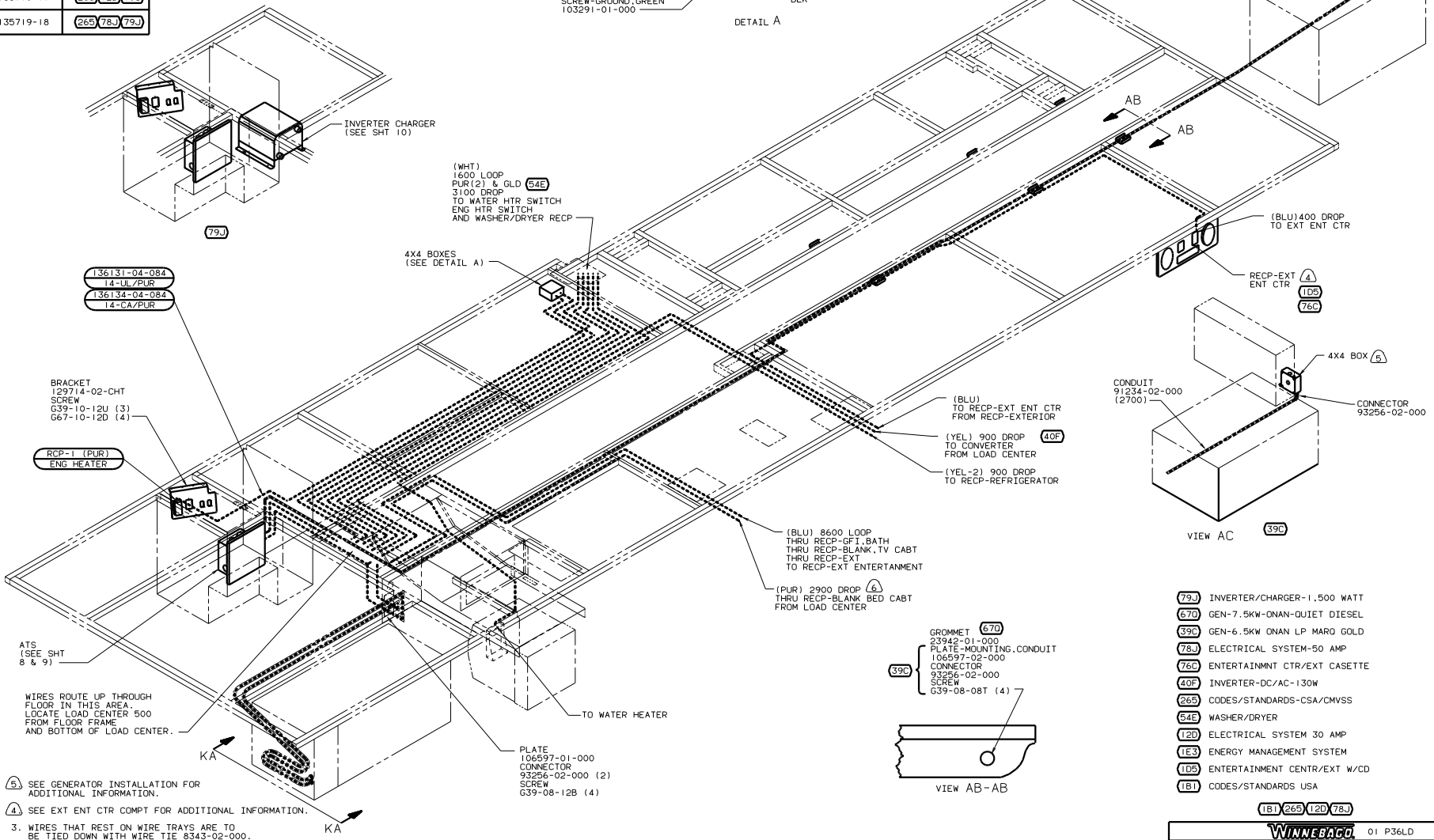
DWG NO.	FEATURE
135719-01	-----
135719-11	(1B1) (12D)
135719-12	(1B1) (78J)
135719-13	(1B1) (12D) (79J)
135719-14	(1B1) (78J) (79J)
135719-15	(265) (12D)
135719-16	(265) (78J)
135719-17	(265) (12D) (79J)
135719-18	(265) (78J) (79J)

FROM LOAD CENTER



- (1B1) BOX 8289-01-000
- (265) 8289-02-000
- SCREW G11-08-12B (2)
- COVER 8294-01-000
- (1B1) 8294-02-000
- (265) CONNECTOR 8356-01-000(4)
- WIRE ASM-GROUND 133678-01-000(2)
- CONNECTOR 8313-01-000 (4)
- 8314-01-000
- SCREW-GROUND, GREEN 103291-01-000

(A) (67D) DIESEL VIEW SHOWN (FOR LP GEN INSTL SEE VIEW AC)



- (5) SEE GENERATOR INSTALLATION FOR ADDITIONAL INFORMATION.
- (4) SEE EXT ENT CTR COMPT FOR ADDITIONAL INFORMATION.
3. WIRES THAT REST ON WIRE TRAYS ARE TO BE TIED DOWN WITH WIRE TIE 8343-02-000.
2. CLAMP TO FLOOR SUPPORT TUBES AS NECESSARY WITH CLAMP 10497-01-000
1. ALL WIRE TO BE CLAMPED WITH CLAMP 10495-01-000 OR CLIP 80734-02-000 EVERY 700. USE SCREW G67-10-12B UNLESS OTHERWISE SPECIFIED.

FOR ELECTRICAL TORQUE SPECIFICATIONS SEE DWG NO. 128783-01-000

FOR ELECTRICAL CALLOUTS SEE DWG NO. 121339-01-000

- (79J) INVERTER/CHARGER-1.500 WATT
- (67D) GEN-7.5KW-ONAN-QUIET DIESEL
- (39C) GEN-6.5KW ONAN LP MARO GOLD
- (78J) ELECTRICAL SYSTEM-50 AMP
- (76C) ENTERTAINMNT CTR/EXT CASSETTE
- (40F) INVERTER-DC/AC-130W
- (265) CODES/STANDARDS-CSA/CMVSS
- (54E) WASHER/DRYER
- (12D) ELECTRICAL SYSTEM 30 AMP
- (1E3) ENERGY MANAGEMENT SYSTEM
- (105) ENTERTAINMENT CENTR/EXT W/CD
- (1B1) CODES/STANDARDS USA

(1B1) (265) (12D) (78J)

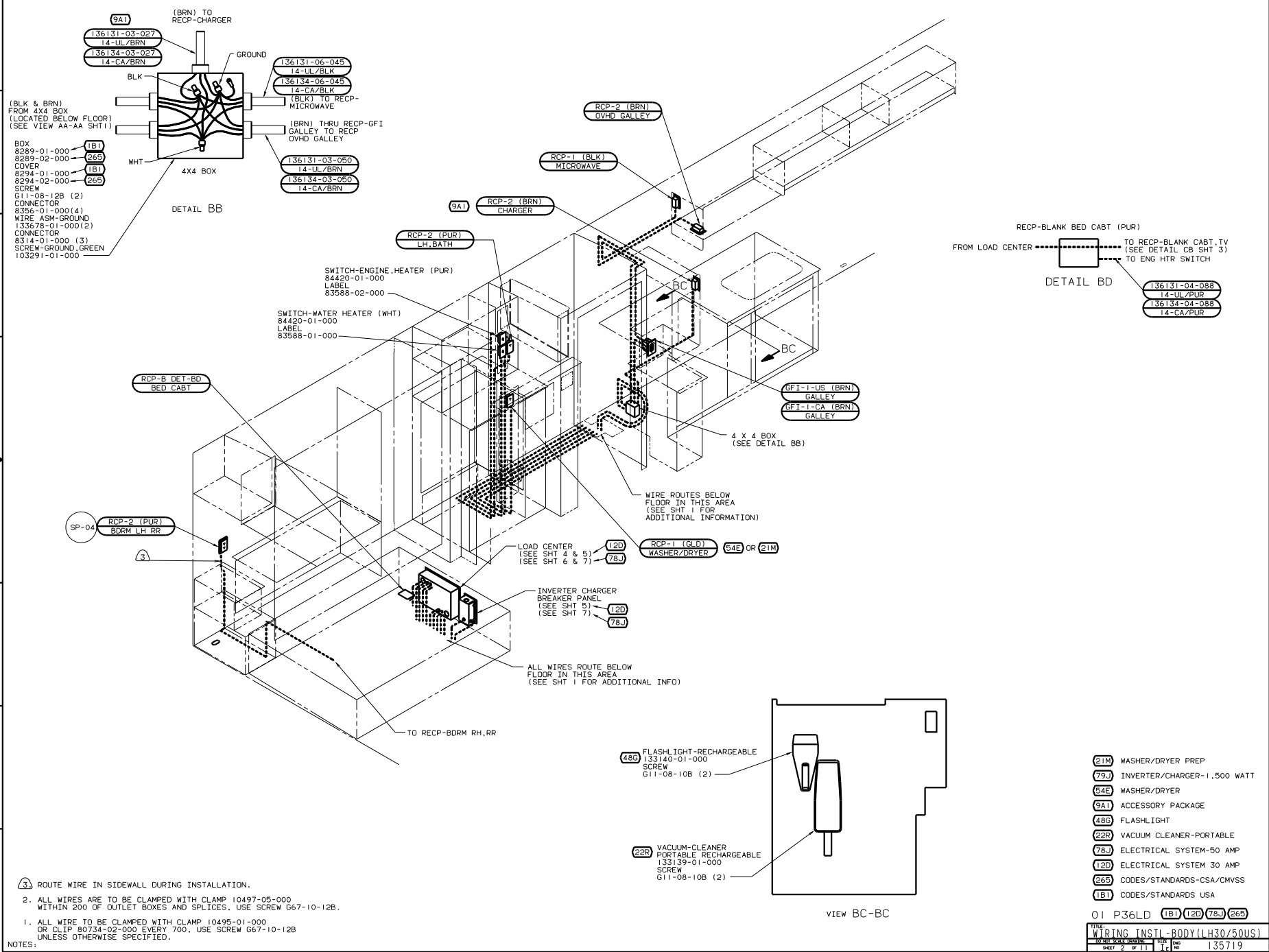
WINNACOG 01 P36LD

OF IT	DATE	UNSPECIFIED TOLERANCES ARE:	MATERIAL
OMP	DATE	ONE-PLACE (X.X)	
PIE	DATE	TWO-PLACE (X.XX)	
PIE	DATE	THREE-PLACE (X.XXX)	
COMP	DATE	THREE WHOLE INCHES	

LANOT ----- TITLE: **WIRING INSTL-BODY (BLF)**

REV # SCALE: NONE TO THE SCALE SHOWN THE DWG NO. 135719

ALL DIMENSIONS ARE IN MILLIMETERS SHEET 1 OF 11 REF: 133719-M 1



(BLK & BRN)
FROM 4X4 BOX
(LOCATED BELOW FLOOR)
(SEE VIEW AA-AA SHT1)

BOX
8289-01-000 (1B1)
8289-02-000 (265)
COVER
8294-01-000 (1B1)
8294-02-000 (265)
SCREW
G11-08-126 (2)
CONNECTOR
8356-01-000(4)
WIRE ASM-GROUND
133678-01-000(2)
CONNECTOR
8314-01-000 (3)
SCREW-GROUND, GREEN
103291-01-000

SWITCH-ENGINE, HEATER (PUR)
84420-01-000
LABEL
83588-02-000

SWITCH-WATER HEATER (WHT)
84420-01-000
LABEL
83588-01-000

RCP-2 (BRN)
OVHD GALLEY

RCP-1 (BLK)
MICROWAVE

RCP-2 (BRN)
CHARGER

RCP-2 (PUR)
LH_BATH

RCP-1 (GLD)
WASHER/DRYER 54E OR 21M

INVERTER CHARGER
BREAKER PANEL
(SEE SHT 5)
(SEE SHT 7)

ALL WIRES ROUTE BELOW
FLOOR IN THIS AREA
(SEE SHT 1 FOR ADDITIONAL INFO)

TO RECP-BDRM RH, RR

FLASHLIGHT-RECHARGEABLE
33140-01-000
SCREW
G11-08-108 (2)

VACUUM-CLEANER
PORTABLE RECHARGEABLE
133139-01-000
SCREW
G11-08-108 (2)

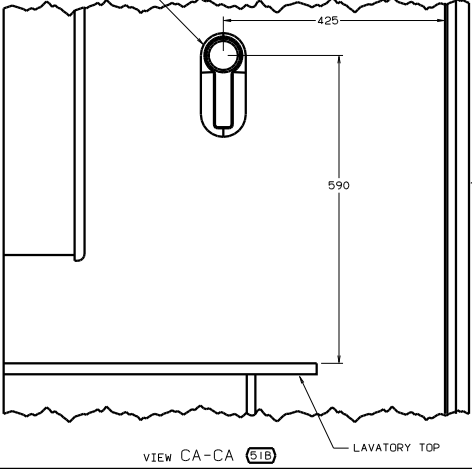
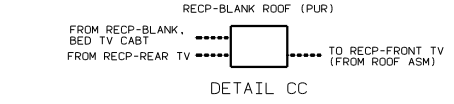
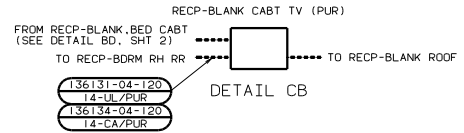
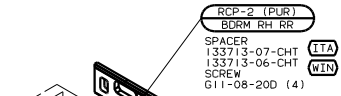
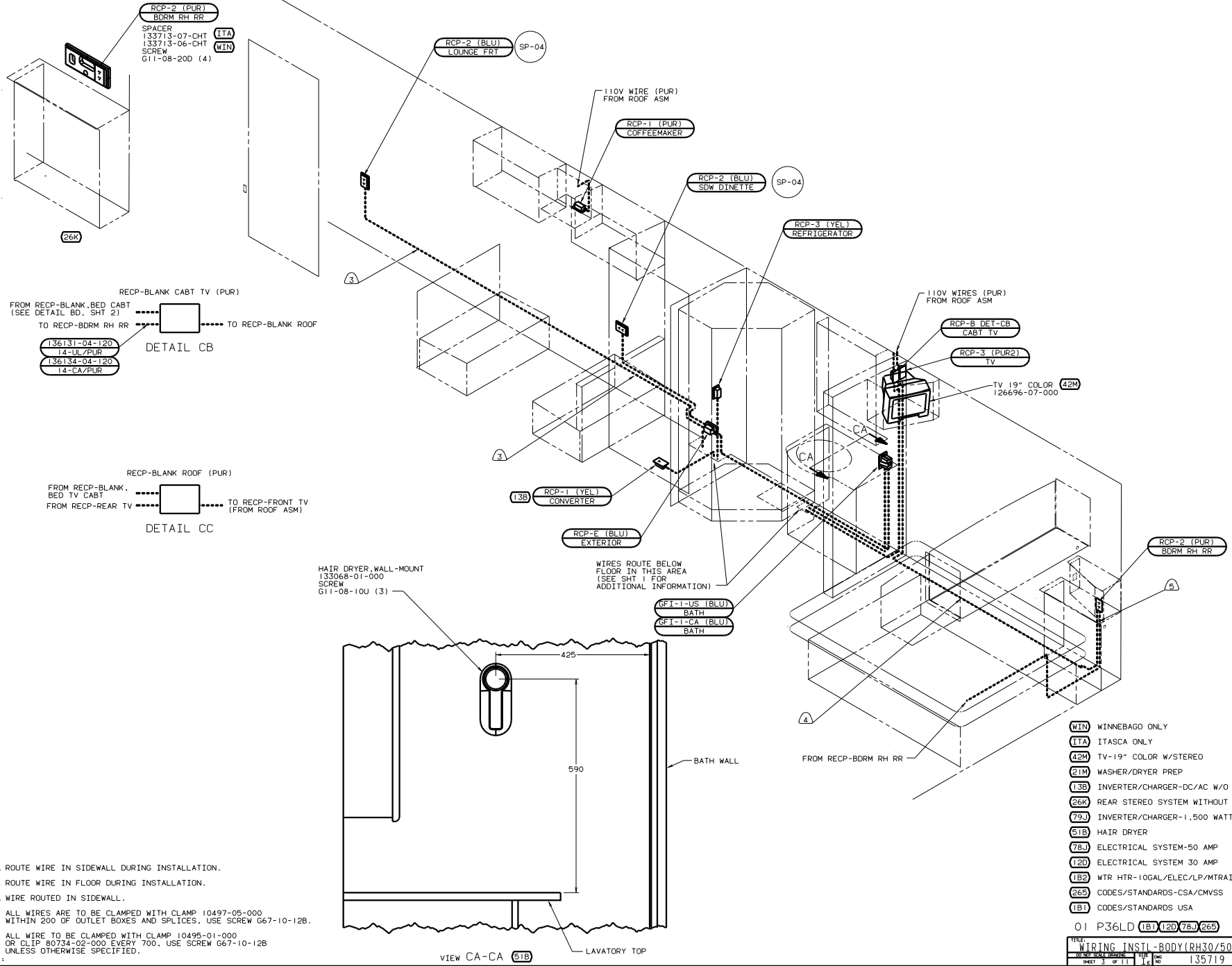
- (21M) WASHER/DRYER PREP
- (79J) INVERTER/CHARGER-1,500 WATT
- (54E) WASHER/DRYER
- (9A1) ACCESSORY PACKAGE
- (48B) FLASHLIGHT
- (22R) VACUUM CLEANER-PORTABLE
- (78J) ELECTRICAL SYSTEM-50 AMP
- (12D) ELECTRICAL SYSTEM 30 AMP
- (265) CODES/STANDARDS-CSA/CMVSS
- (1B1) CODES/STANDARDS USA

NOTES:

1. ALL WIRE TO BE CLAMPED WITH CLAMP 10495-01-000
OR CLIP 80734-02-000 EVERY 700, USE SCREW G67-10-126
UNLESS OTHERWISE SPECIFIED.

2. ALL WIRES ARE TO BE CLAMPED WITH CLAMP 10497-05-000
WITHIN 200 OF OUTLET BOXES AND SPLICES. USE SCREW G67-10-126.

3. ROUTE WIRE IN SIDEWALL DURING INSTALLATION.

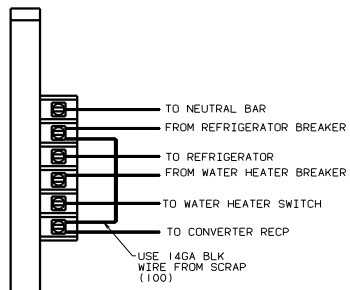
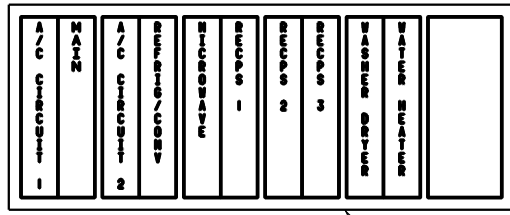
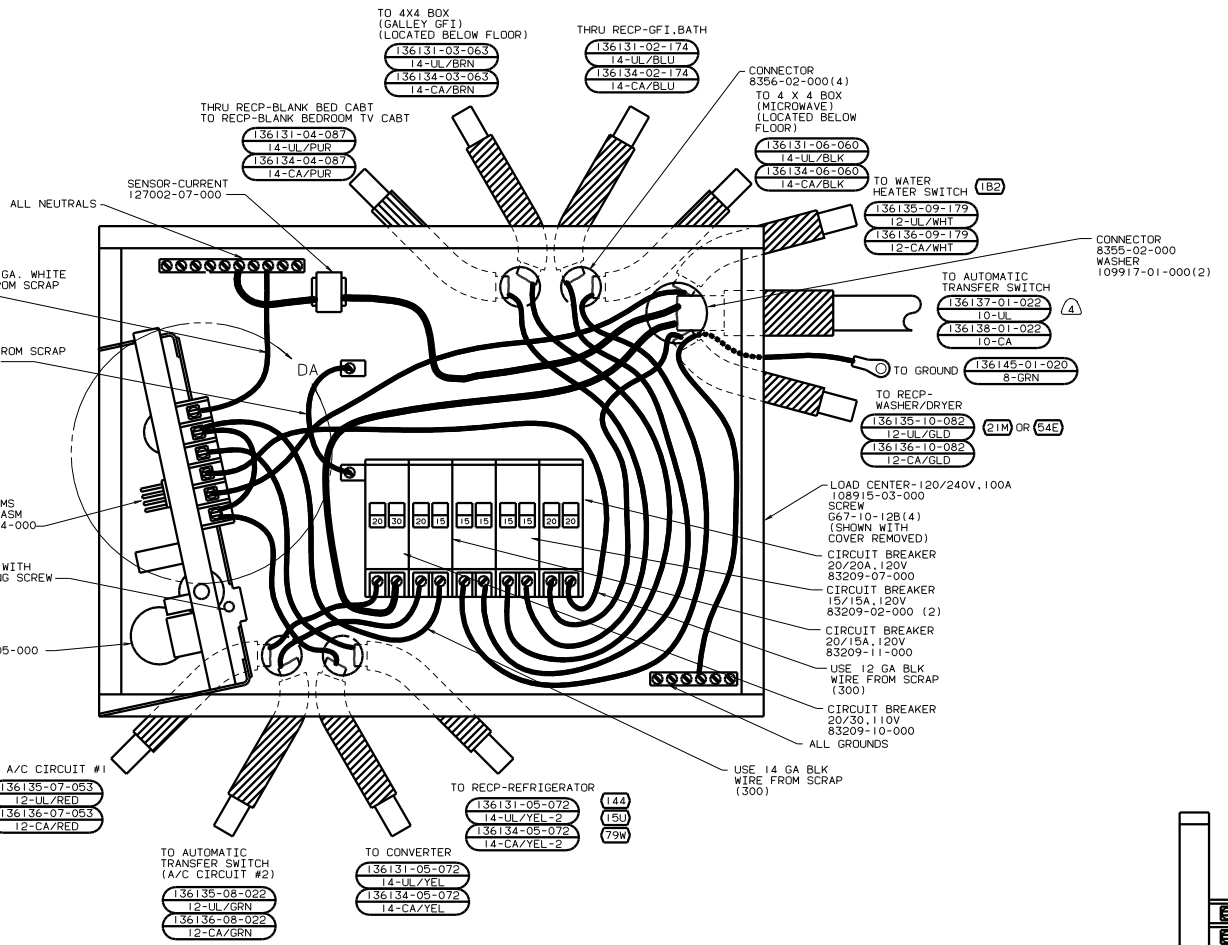


- (5) ROUTE WIRE IN SIDEWALL DURING INSTALLATION.
 (4) ROUTE WIRE IN FLOOR DURING INSTALLATION.
 (3) WIRE ROUTED IN SIDEWALL.
 2. ALL WIRES ARE TO BE CLAMPED WITH CLAMP 10497-05-000 WITHIN 200 OF OUTLET BOXES AND SPLICES. USE SCREW G67-10-12B.
 1. ALL WIRE TO BE CLAMPED WITH CLAMP 10495-01-000 OR CLIP 80734-02-000 EVERY 700. USE SCREW G67-10-12B UNLESS OTHERWISE SPECIFIED.

- (WIN) WINNEBAGO ONLY
 (ITA) ITASCA ONLY
 (42M) TV-19" COLOR W/STEREO
 (21M) WASHER/DRYER PREP
 (13B) INVERTER/CHARGER-DC/AC W/D
 (26K) REAR STEREO SYSTEM WITHOUT
 (79J) INVERTER/CHARGER-1,500 WATT
 (51B) HAIR DRYER
 (78J) ELECTRICAL SYSTEM-50 AMP
 (12D) ELECTRICAL SYSTEM 30 AMP
 (1B2) WTR HTR-10GAL/ELEC/LP/MTRAD
 (265) CODES/STANDARDS-CSA/CMVSS
 (1B1) CODES/STANDARDS USA

H
G
F
E
D
C
B
A

8 7 6 5 4 3 2 1



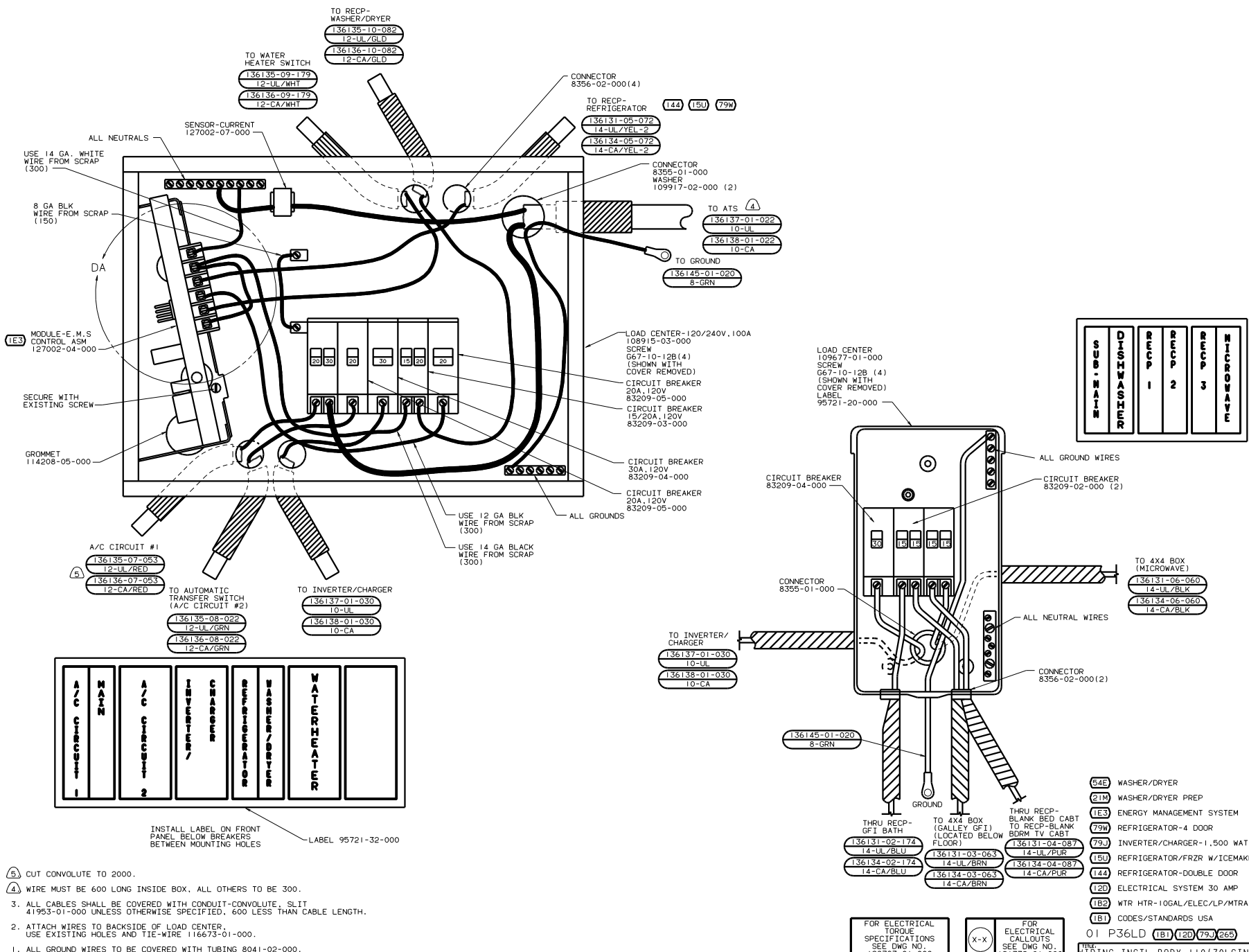
- (54E) WASHER/DRYER
- (21N) DISHWASHER/BUILT-IN
- (79W) REFRIGERATOR-4 DOOR
- (53F) WATER HEATER-ELEC. IGNITION
- (15U) REFRIGERATOR/FRZR W/ICEMAKER
- (144) REFRIGERATOR-DOUBLE DOOR
- (IE3) ENERGY MANAGMNT SYSTEM
- (26S) CODES/STANDARDS-CSA/CMVSS
- (1B1) CODES STANDARDS/USA
- (12D) ELECTRICAL SYSTEM 30 AMP

1. ALL GROUND WIRES TO BE COVERED WITH TUBING 8041-02-000.
2. ATTACH WIRES TO BACKSIDE OF LOAD CENTER. USE EXISTING HOLES AND TIE-WIRE 116673-01-000.
3. ALL CABLES SHALL BE COVERED WITH CONDUIT-CONVOLUTE, SLIT 41953-01-000 UNLESS OTHERWISE SPECIFIED. 600 LESS THAN CABLE LENGTH.

FOR ELECTRICAL TORQUE SPECIFICATIONS SEE DWG NO. 128783-01-000

FOR ELECTRICAL CALLOUTS SEE DWG NO. 121339-01-000

01 P36LD (1B1) (2D) (IE3) (26S)
 WIRING INSTL-BODY(30 LC)
 SHEET 4 OF 11
 135719



SUB-MAIN	DISHWASHER	REFC 1	REFC 2	REFC 3	MICROWAVE
----------	------------	--------	--------	--------	-----------

A/C CIRCUIT #1	MAIN	A/C CIRCUIT #2	INVERTER/CHARGER	REFRIGERATOR	WASHER/DRYER	WATER HEATER
----------------	------	----------------	------------------	--------------	--------------	--------------

INSTALL LABEL ON FRONT PANEL BELOW BREAKERS BETWEEN MOUNTING HOLES
 LABEL 95721-32-000

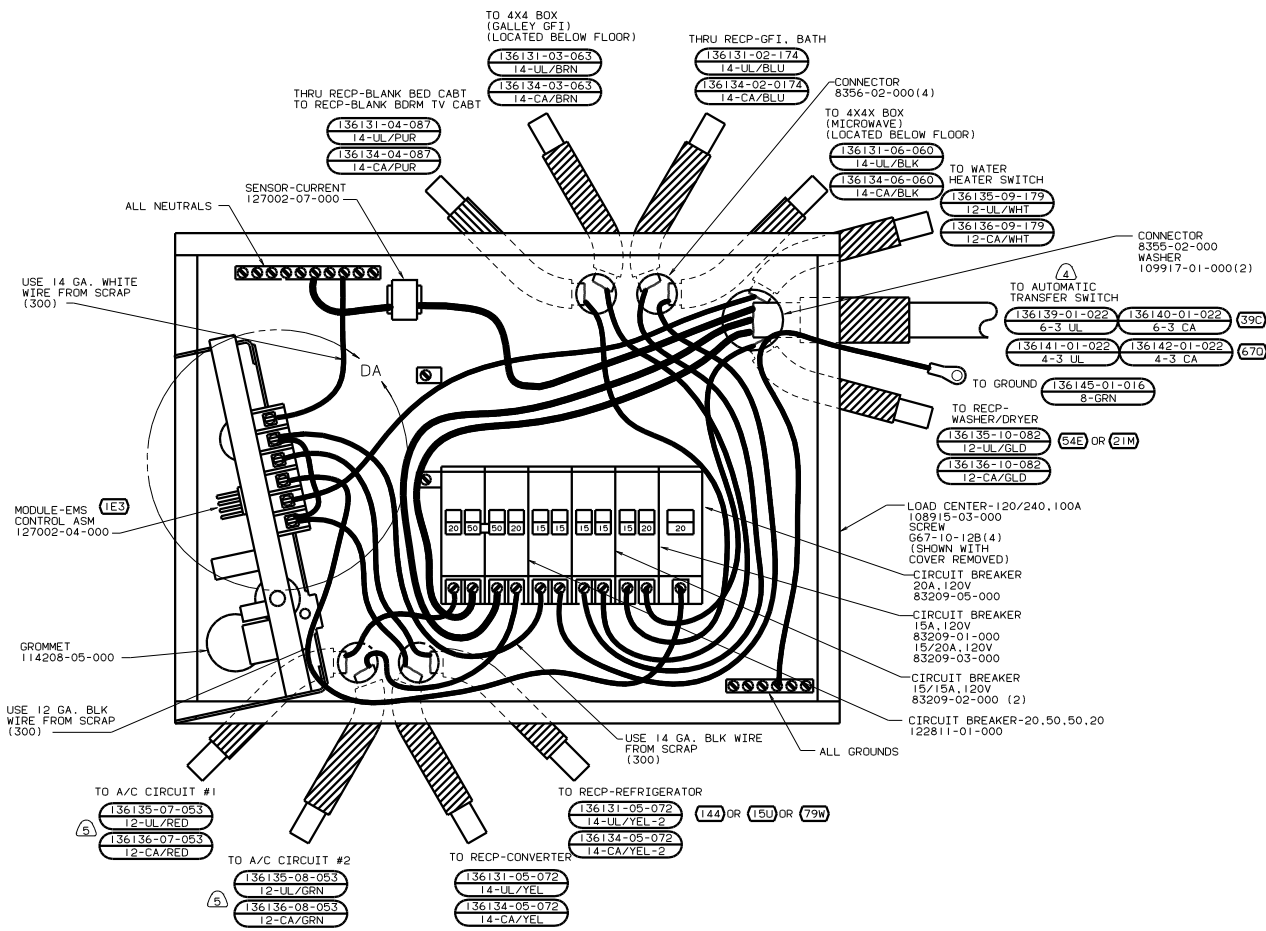
- 1. ALL GROUND WIRES TO BE COVERED WITH TUBING 8041-02-000.
- 2. ATTACH WIRES TO BACKSIDE OF LOAD CENTER. USE EXISTING HOLES AND TIE-WIRE 116673-01-000.
- 3. ALL CABLES SHALL BE COVERED WITH CONDUIT-CONVOLUTE, SLIT 41953-01-000 UNLESS OTHERWISE SPECIFIED. 600 LESS THAN CABLE LENGTH.
- 4. WIRE MUST BE 600 LONG INSIDE BOX, ALL OTHERS TO BE 300.
- 5. CUT CONVOLUTE TO 2000.

FOR ELECTRICAL TORQUE SPECIFICATIONS SEE DWG NO. 128783-01-000

FOR ELECTRICAL CALLOUTS SEE DWG NO. 121339-01-000

- (54E) WASHER/DRYER
- (21W) WASHER/DRYER PREP
- (1E3) ENERGY MANAGEMENT SYSTEM
- (79N) REFRIGERATOR-4 DOOR
- (79J) INVERTER/CHARGER-1,500 WATT
- (15U) REFRIGERATOR/FRZR W/ICEMAKER
- (144) REFRIGERATOR-DOUBLE DOOR
- (120) ELECTRICAL SYSTEM 30 AMP
- (1B2) WTR HTR-10GAL/ELEC/LP/MTR/AID
- (1B1) CODES/STANDARDS USA

01 P36LD (1B1) (120) (79J) (265)



A/C CIRCUIT #1	WATER HEATER
WATER HEATER	WASHER/DRYER
A/C CIRCUIT #2	RECP 3
REFRIG/CONV	RECP 2
MICROWAVE	RECP 1
WATER HEATER	RECP 1
A/C CIRCUIT #1	WATER HEATER
WATER HEATER	WASHER/DRYER
A/C CIRCUIT #2	RECP 3
REFRIG/CONV	RECP 2
MICROWAVE	RECP 1
WATER HEATER	RECP 1
A/C CIRCUIT #1	WATER HEATER
WATER HEATER	WASHER/DRYER
A/C CIRCUIT #2	RECP 3
REFRIG/CONV	RECP 2
MICROWAVE	RECP 1
WATER HEATER	RECP 1

- (21M) WASHER/DRYER PREP
- (54E) WASHER/DRYER
- (79W) REFRIGERATOR-4 DOOR
- (15U) REFRIGERATOR/FRZR W/ICEMAKER
- (144) REFRIGERATOR-DOUBLE DOOR
- (670) GEN-7.5KW-ONAN-QUIET DIESEL
- (39C) GEN-6.5KW-ONAN LP MARO GOLD
- (63F) WATER HEATER-ELEC. IGNITION
- (15U) REFRIGERATOR/FRZR W/ICEMAKER
- (144) REFRIGERATOR-DOUBLE DOOR
- (78U) ELECTRICAL SYSTEM - 50 AMP
- (1E3) ENERGY MANEGMNT SYSTEM
- (265) CODES/STANDARDS-CSA/CMVSS
- (1B1) CODES STANDARDS/USA

3. ALL CABLES SHALL BE COVERED WITH CONDUIT-CONVOLUTE, SLIT 41953-01-000 UNLESS OTHERWISE SPECIFIED. 600 LESS THAN CABLE LENGTH.
2. ATTACH WIRES TO BACKSIDE OF LOAD CENTER. USE EXISTING HOLES AND TIE-WIRE 116673-01-000.
1. ALL GROUND WIRES TO BE COVERED WITH TUBING 8041-02-000.

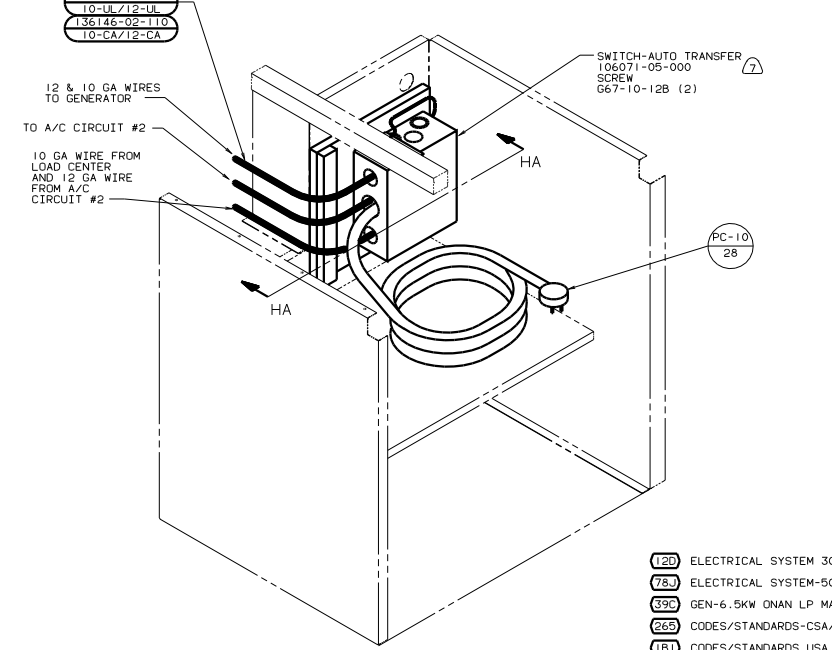
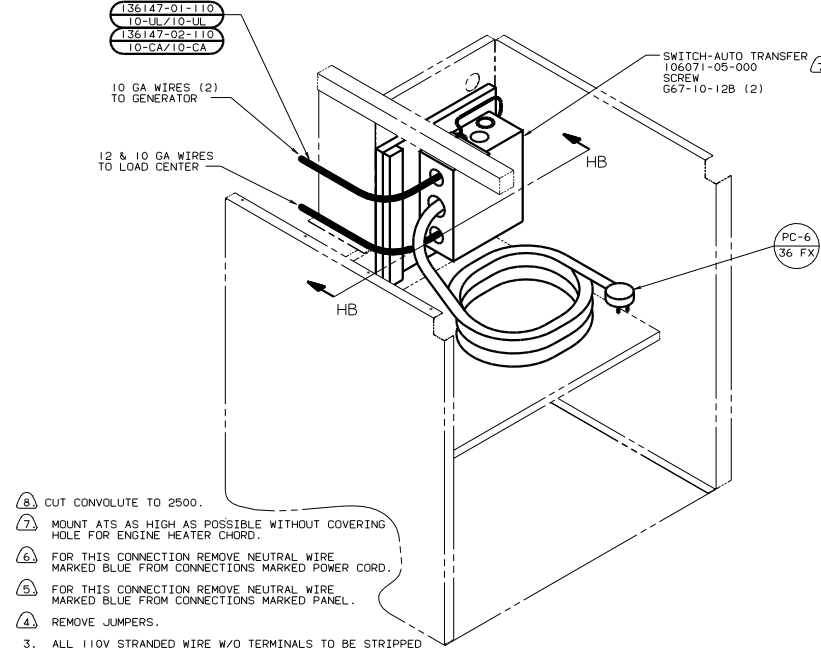
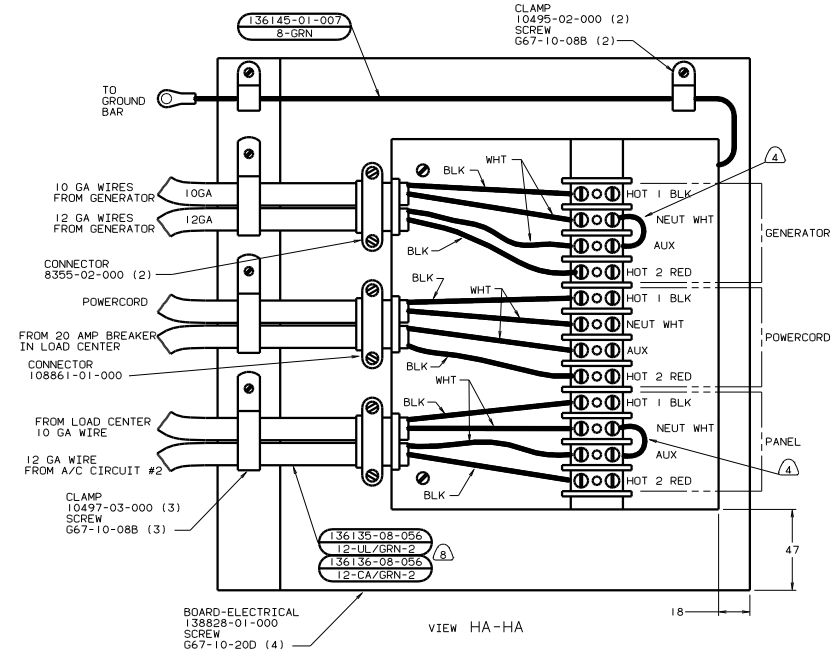
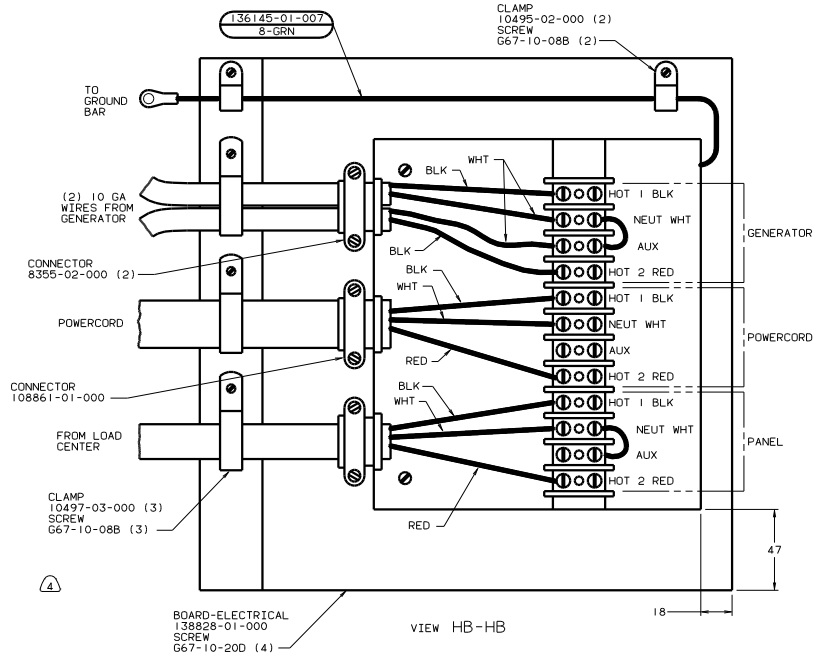
INSTALL LABEL ON FRONT PANEL BELOW BREAKERS BETWEEN MOUNTING HOLES

LABEL 95721-33-000

FOR ELECTRICAL TORQUE SPECIFICATIONS SEE DWG NO. 126783-01-000

FOR ELECTRICAL CALLOUTS SEE DWG NO. 121339-01-000

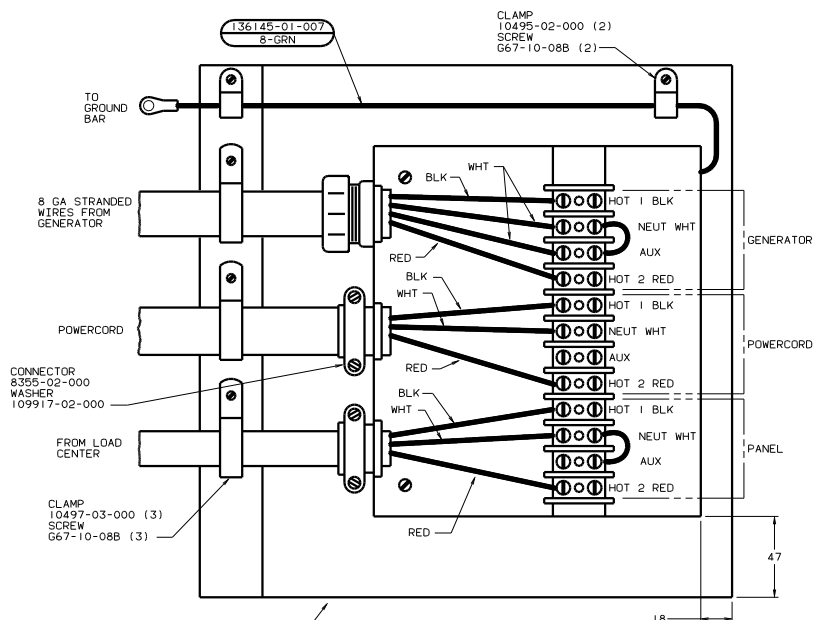
01 P36LD (1B1) (1E3) (78U) (265)
 WIRING INSTL-BODY,110V(50LCUS)
 SHEET 6 OF 11



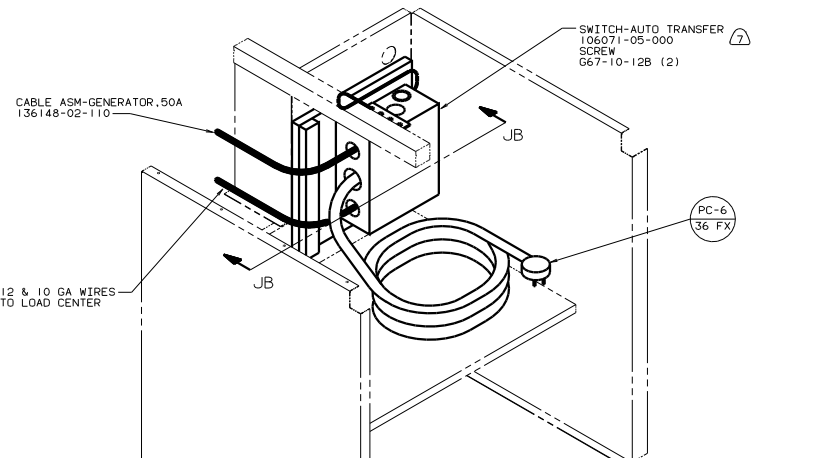
- 8) CUT CONVOLUTE TO 2500.
- 7) MOUNT ATS AS HIGH AS POSSIBLE WITHOUT COVERING HOLE FOR ENGINE HEATER CHORD.
- 6) FOR THIS CONNECTION REMOVE NEUTRAL WIRE MARKED BLUE FROM CONNECTIONS MARKED POWER CORD.
- 5) FOR THIS CONNECTION REMOVE NEUTRAL WIRE MARKED BLUE FROM CONNECTIONS MARKED PANEL.
- 4) REMOVE JUMPERS.
- 3. ALL 110V STRANDED WIRE W/O TERMINALS TO BE STRIPPED 10MM AND SOLDER DIPPED.
- 2. GROUND WIRES NOT SHOWN FOR CLARITY.
- 1. ALL WIRES TO BE CLAMPED WITH IN 200 OF BOX.

- 12D) ELECTRICAL SYSTEM 30 AMP
- 78J) ELECTRICAL SYSTEM-50 AMP
- 39C) GEN-6.5KW ONAN LP MARQ GOLD
- 265) CODES/STANDARDS-CA/CMVSS
- 1B1) CODES/STANDARDS USA

01 P36LD		1B1	39C	265
TITLE: WIRING INSTL-BODY (ATS) US				
NO. OF SHEETS	TOTAL SHEETS	REV	DATE	
8	11		135719	



VIEW JB-JB



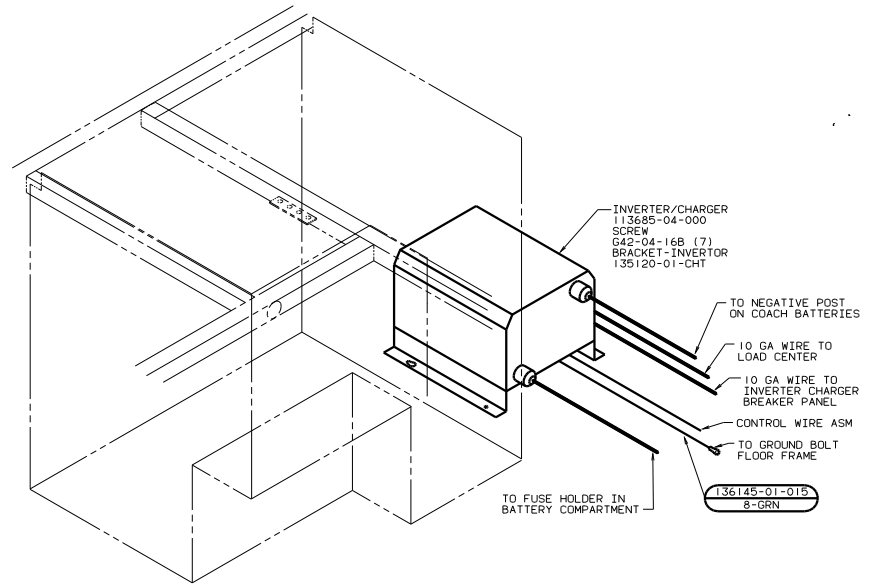
- (7) MOUNT AT AS HIGH AS POSSIBLE WITHOUT COVERING HOLE FOR ENGINE HEATER CHORD.
 - (6) FOR THIS CONNECTION REMOVE NEUTRAL WIRE MARKED BLUE FROM CONNECTIONS MARKED POWER CORD.
 - (5) FOR THIS CONNECTION REMOVE NEUTRAL WIRE MARKED BLUE FROM CONNECTIONS MARKED PANEL.
 - (4) PAINT EXPOSED SURFACE BLACK WITH 106112-01-000
3. ALL 110V STRANDED WIRE W/O TERMINALS TO BE STRIPPED 10MM AND SOLDER DIPPED.
 2. GROUND WIRES NOT SHOWN FOR CLARITY.
 1. ALL WIRES TO BE CLAMPED WITH IN 200 OF BOX.

NOTES:

- (265) CODES/STANDARDS-CSA/CMVSS
- (78J) ELECTRICAL SYSTEM-50 AMP
- (670) GEN-7.5KW-ONAN-QUIET DIESEL
- (1B1) CODES/STANDARDS USA

01 P36LD (1B1)(265)(670)

FILE: WIRING INSTL-BODY, 110V(AIS)	
NO. OF SHEETS	TOT. SHEETS
9 OF 11	16
135719	



(79J) (4)

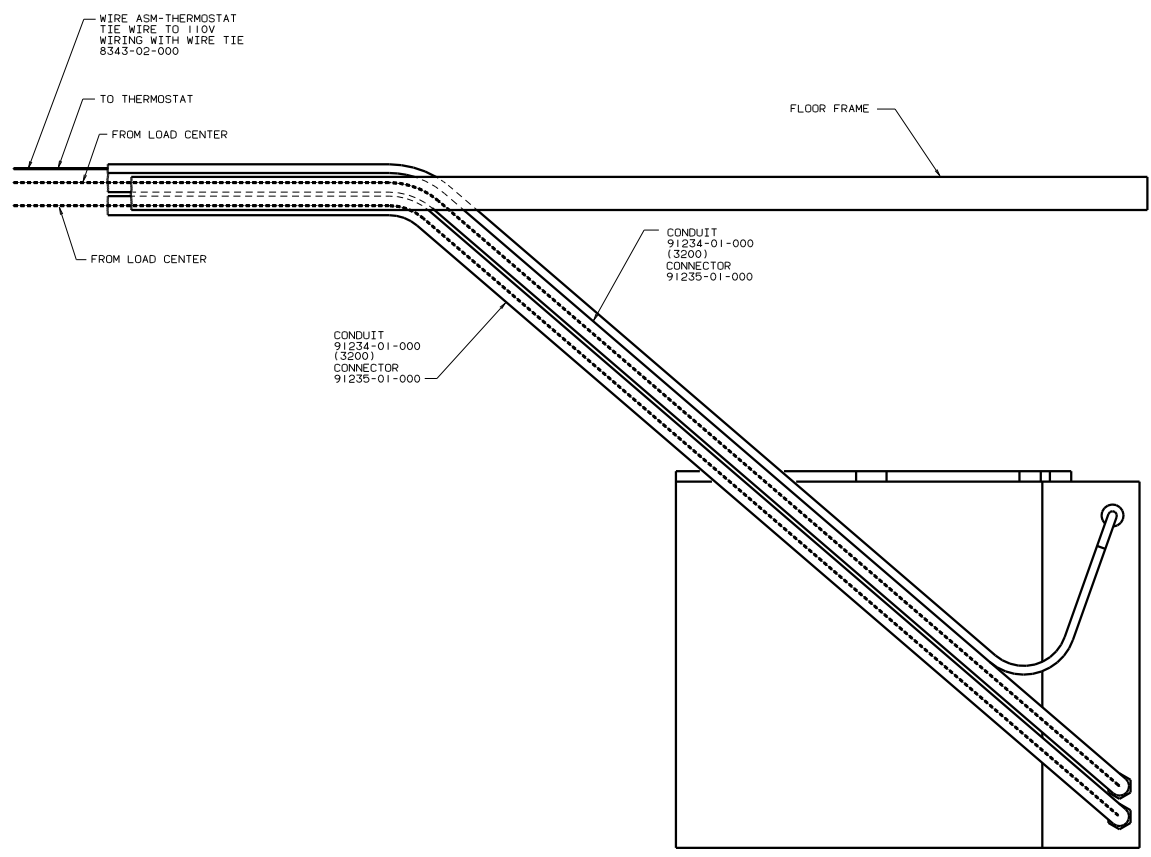
- (5) MOUNT ATS AS HIGH AS POSSIBLE WITHOUT COVERING HOLE FOR ENGINE HEATER CHORD.
- (4) PAINT EXPOSED SURFACE BLACK WITH 106112-01-000
- 3. ALL 110V STRANDED WIRE W/O TERMINALS TO BE STRIPPED 10MM AND SOLDER DIPPED.
- 2. GROUND WIRES NOT SHOWN FOR CLARITY.
- 1. ALL WIRES TO BE CLAMPED WITH IN 200 OF BOX.

NOTES:

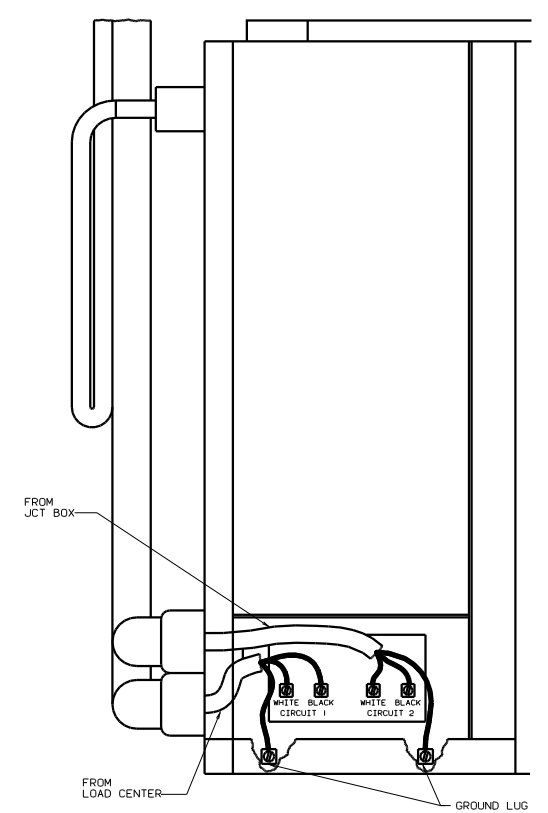
- (79J) INVERTER/CHARGER-1,500 WATT
- (78J) ELECTRICAL SYSTEM-50 AMP
- (67D) GEN-7.5KW-QNAN-QUIET DIESEL
- (1B1) CODES/STANDARDS USA

01 P36LD (1B1)(265)(67D)

TITLE		WIRING INSTL-BODY(ATS)	
NO. OF SHEETS	TOTAL SHEETS	FIG. NO.	135719
SHEET 10 OF 11	11	1E	



VIEW KA-KA



(265) CODES/STANDARDS-CSA/CMVSS
 (IB1) CODES/STANDARDS-USA

FOR ELECTRICAL
TORQUE
SPECIFICATIONS
SEE DWG NO.
128783-01-000

(X-X)

FOR
ELECTRICAL
CALLOUTS
SEE DWG NO.
121339-01-000

01 P36LD (IB1) (265)

FILE: WIRING INSTL-BODY(CNTRL A/C)
 SHEET 11 OF 11