



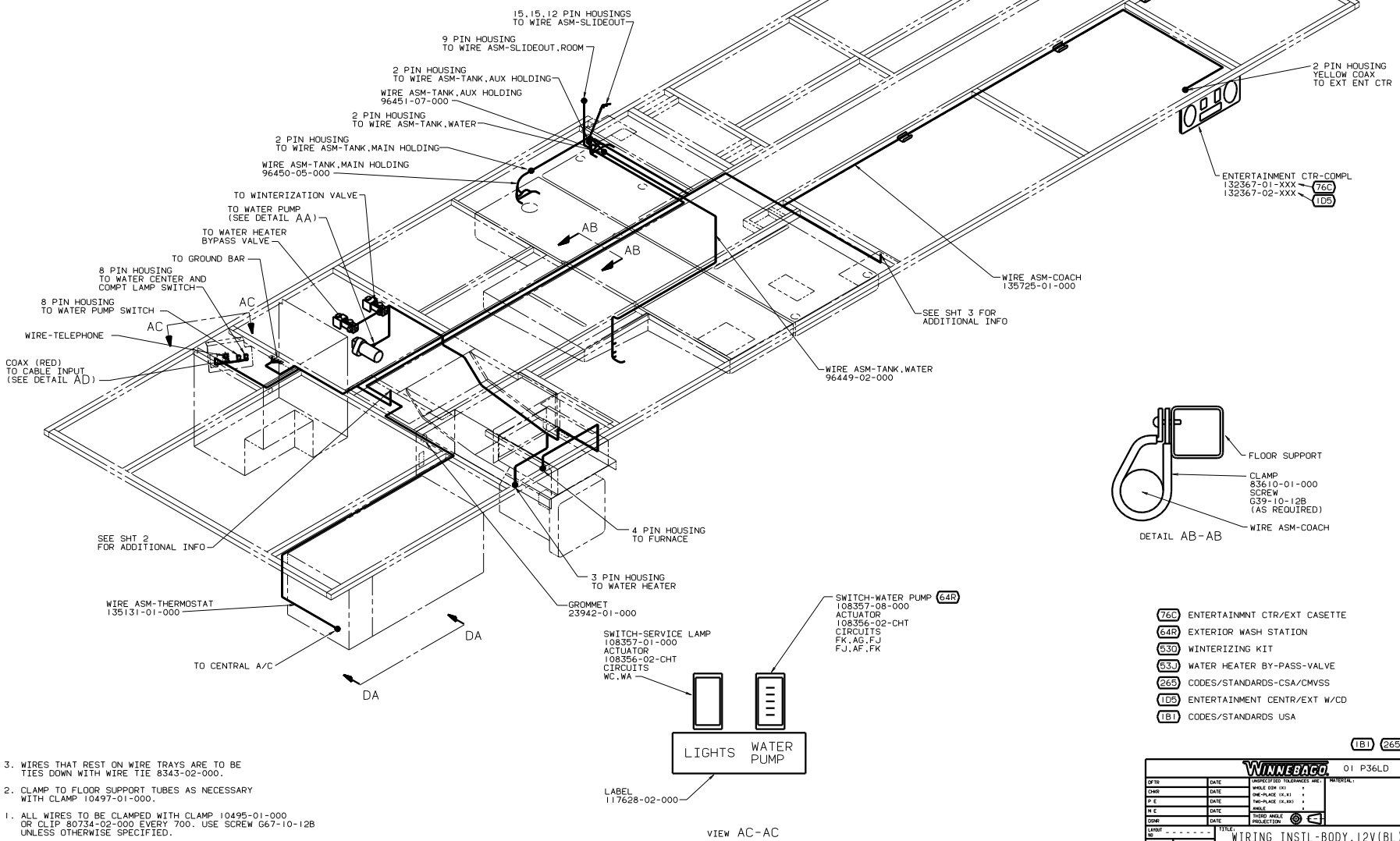
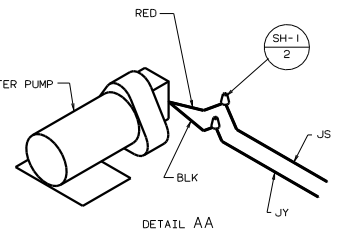
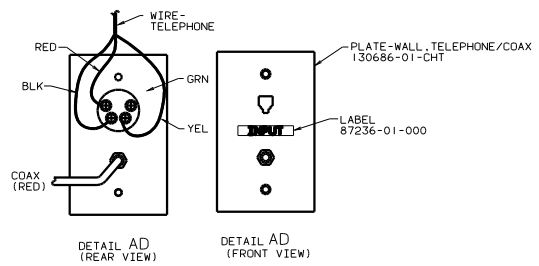
DANGER

Danger of electrical shock, burns or death. Always remove all power sources before attempting any repair, service or diagnostic work. Power can be present from shore power, generator, inverter or battery. All power sources must be disabled and secured before performing any service.



CAUTION

If you lack the skills, tools or equipment to perform diagnostic or repair work leave such work to an authorized Winnebago Industries dealer or other qualified shop.

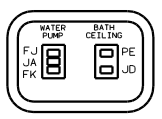


3. WIRES THAT REST ON WIRE TRAYS ARE TO BE TIES DOWN WITH WIRE TIE 8343-02-000.
2. CLAMP TO FLOOR SUPPORT TUBES AS NECESSARY WITH CLAMP 10497-01-000.
1. ALL WIRES TO BE CLAMPED WITH CLAMP 10495-01-000 OR CLIP 80734-02-000 EVERY 700. USE SCREW G67-10-12B UNLESS OTHERWISE SPECIFIED.

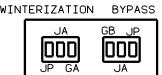
- 76C ENTERTAINMENT CTR/EXT CASSETTE
- 64R EXTERIOR WASH STATION
- 630 WINTERIZING KIT
- 633 WATER HEATER BY-PASS-VALVE
- 265 CODES/STANDARDS-CSA/CMVSS
- 105 ENTERTAINMENT CENTR/EXT W/CD
- 101 CODES/STANDARDS USA

101 265

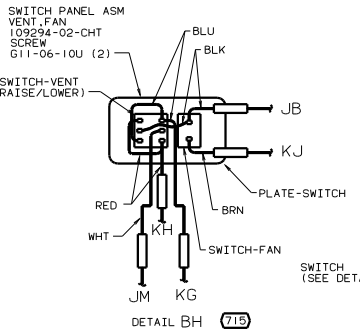
WINNEBAGO		01 P36LD
OF IN	DATE	UNSPECIFIED TOLERANCES ARE:
CHP	DATE	FRAC (IN IN)
PIE	DATE	DEC-PLACE (IN IN)
PL	DATE	ANGLE
COMP	DATE	INDIC. W/ANGLE PROJECTION
REV	DATE	
TITLE: WIRING INSTL-BODY, 12V(BL)		
SCALE	NO. OF SHEETS	SHEET NO.
1:1	6	1
DATE: 11 13 57 18		135718



SWITCH
 132180-02-CHT
 132180-01-CHT
 PLATE
 98351-01-CHT
 SPACER
 95188-01-CHT
 SCREW
 G11-06-16U (4)

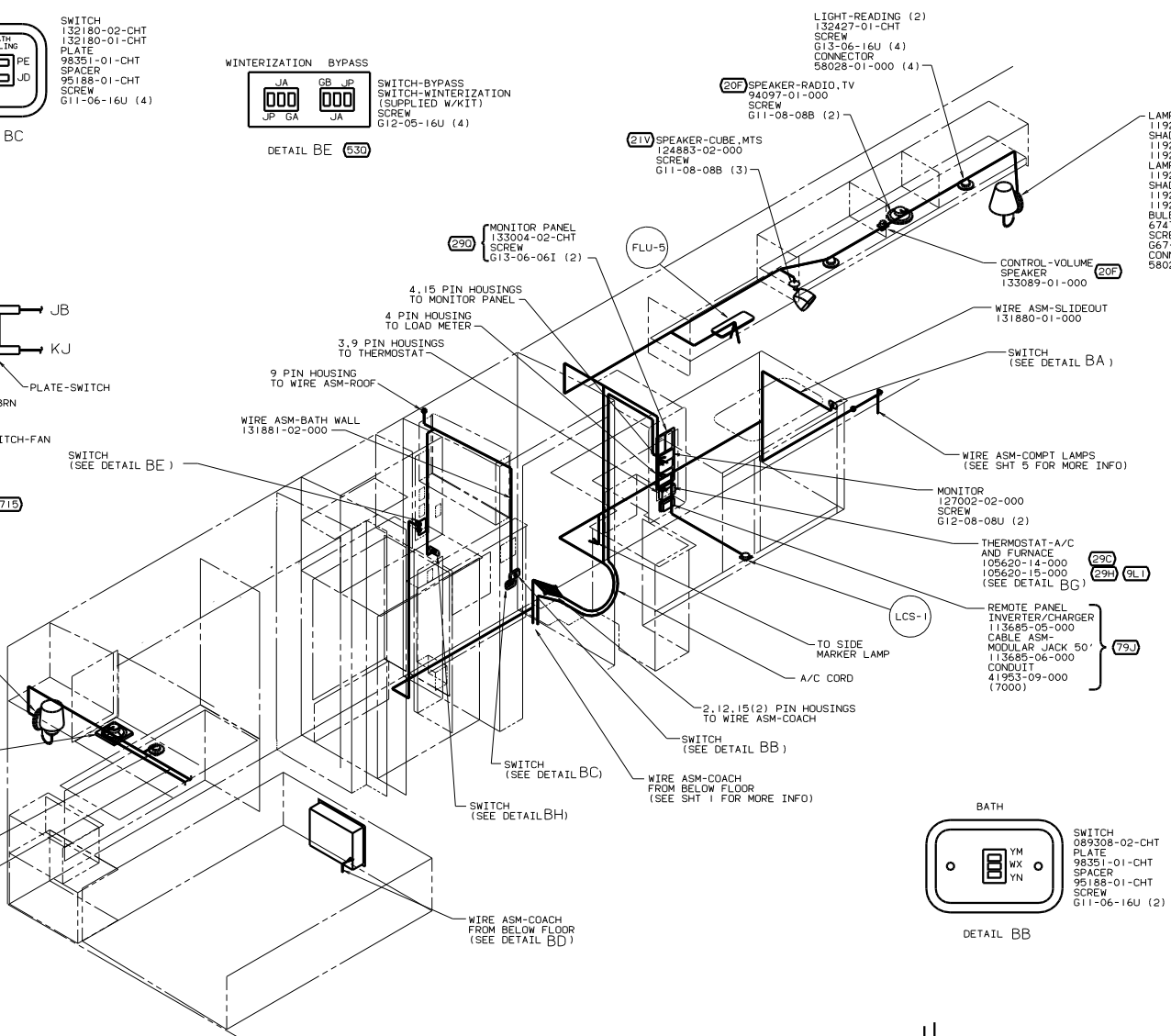


WINTERIZATION BYPASS
 SWITCH-BYPASS
 SWITCH-WINTERIZATION
 (SUPPLIED W/KIT)
 SCREW
 G12-05-16U (4)



SWITCH PANEL ASM
 VENT. FAN
 109294-02-CHT
 SCREW
 G11-06-10U (2)
 SWITCH-VENT
 RAISE/LOWER)
 SWITCH-FAN
 SWITCH (SEE DETAIL BE)

DETAIL BH (71B)



LIGHT-READING (2)
 132427-01-CHT
 SCREW
 G13-06-16U (4)
 CONNECTOR
 58028-01-000 (4)

(20F) SPEAKER-RADIO, TV
 94097-01-000
 SCREW
 G11-08-08B (2)

(21V) SPEAKER-CUBE, MTS
 124883-02-000
 SCREW
 G11-08-08B (3)

(29D) MONITOR PANEL
 133004-02-CHT
 SCREW
 G13-06-061 (2)

CONTROL-VOLUME
 SPEAKER
 133089-01-000

WIRE ASM-SLIDEOUT
 131880-01-000

SWITCH
 (SEE DETAIL BA)

WIRE ASM-COAPT LAMPS
 (SEE SHT 5 FOR MORE INFO)

MONITOR
 127002-02-000
 SCREW
 G12-08-08U (2)

THERMOSTAT-A/C
 AND FURNACE
 105620-14-000
 105620-15-000
 (SEE DETAIL BG)

REMOTE PANEL
 INVERTER/CHARGER
 113685-05-000
 CABLE ASM-
 MODULAR JACK 50'
 113685-06-000
 CONDUIT
 41953-09-000
 (7000)

2.12.15(2) PIN HOUSINGS
 TO WIRE ASM-COACH

WIRE ASM-COACH
 FROM BELOW FLOOR
 (SEE SHT 1 FOR MORE INFO)

WIRE ASM-COACH
 FROM BELOW FLOOR
 (SEE DETAIL BD)

WIRE ASM-COACH
 FROM BELOW FLOOR
 (SEE DETAIL BD)

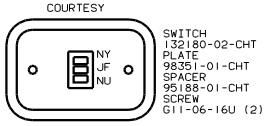
LAMP-WALL
 119258-19-CHT
 SHADE-LAMP
 119257-10-CHT
 119257-11-CHT
 LAMP-WALL
 119258-22-CHT
 SHADE-LAMP
 119257-13-CHT
 119257-11-CHT
 BULB
 67479-01-000(2)
 SCREW
 G67-10-24J (2)
 CONNECTOR
 58028-01-000 (2)

(LTA) LAMP-WALL
 119258-11-CHT
 BULB
 117806-01-000
 LAMP-WALL
 119258-22-CHT
 SHADE-LAMP
 119257-13-CHT
 119257-11-CHT
 BULB
 67479-01-000(2)
 SCREW
 G67-10-24J (2)
 CONNECTOR
 58028-01-000 (2)

(25E) RADIO-SPEAKER
 94097-01-000
 GRILLE
 90026-01-CHT
 SCREW
 G11-08-08B (4)

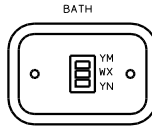
LAMP READING
 132427-01-CHT
 SCREW
 G13-06-16U (2)
 CONNECTOR
 58028-01-000 (2)

WIRE ASM-OVHD
 133231-02-000



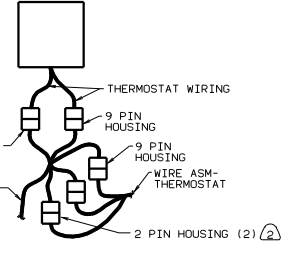
SWITCH
 132180-02-CHT
 PLATE
 98351-01-CHT
 SPACER
 95188-01-CHT
 SCREW
 G11-06-16U (2)

DETAIL BA



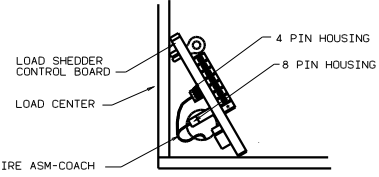
BATH
 SWITCH
 089308-02-CHT
 PLATE
 98351-01-CHT
 SPACER
 95188-01-CHT
 SCREW
 G11-06-16U (2)

DETAIL BB



WIRE ASM-SLIDEOUT
 THERMOSTAT WIRING
 4 PIN HOUSINGS
 9 PIN HOUSING
 9 PIN HOUSING
 WIRE ASM-THERMOSTAT
 2 PIN HOUSING (2)

DETAIL BG



LOAD SHEDDER
 CONTROL BOARD
 LOAD CENTER
 WIRE ASM-COACH

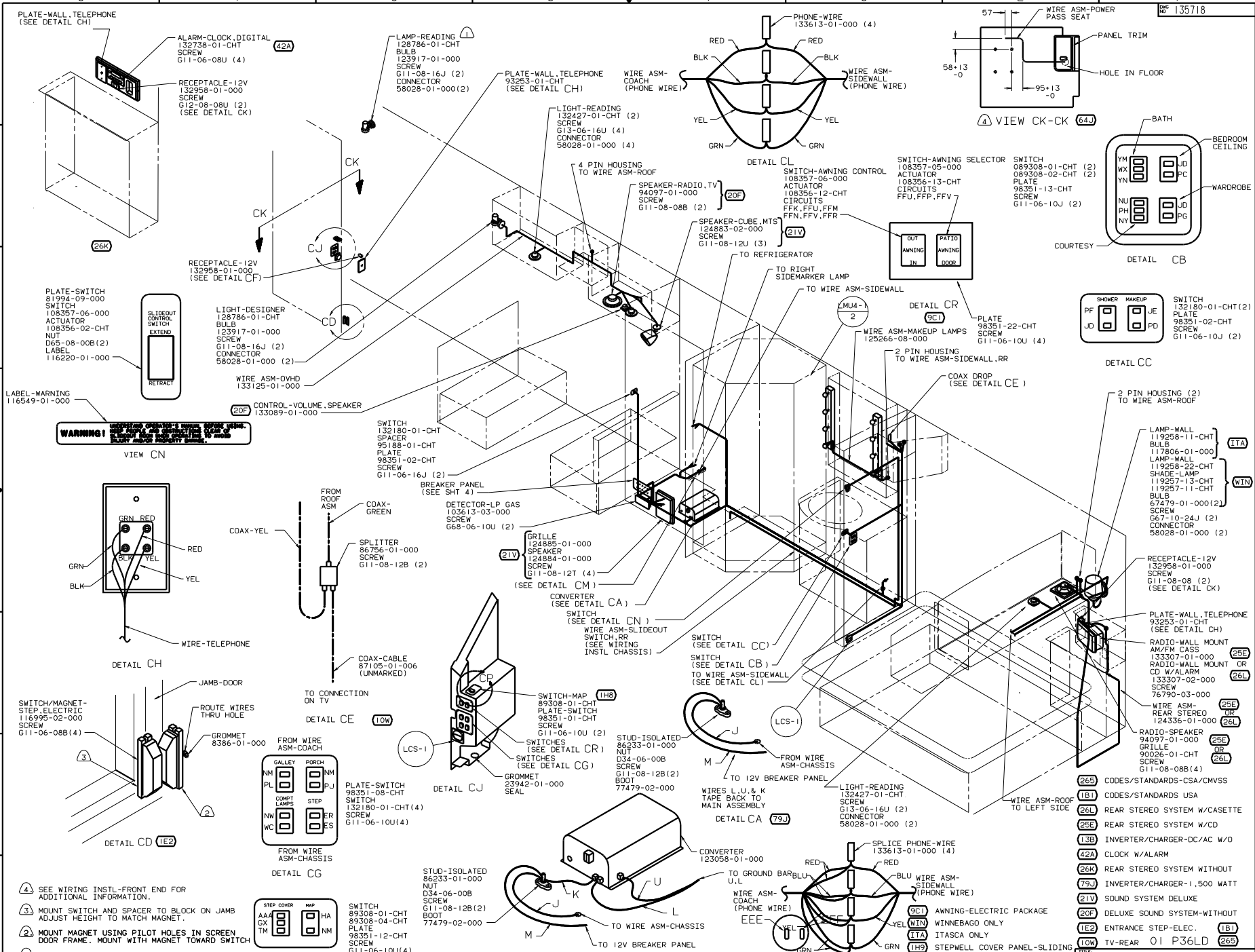
DETAIL BD

FOR ELECTRICAL
 TORQUE
 SPECIFICATIONS
 SEE OMD NO.
 128783-01-000

- (WIN) WINNEBAGO ONLY
- (LTA) ITASCA ONLY
- (29H) HEAT PUMP-A/C CENTRAL
- (29C) A/C CENTRAL
- (26L) REAR STEREO SYSTEM W/CASSETTE
- (25E) REAR STEREO SYSTEM W/CD
- (79J) INVERTER/CHARGER-1,500 WATT
- (530) WINTERIZING KIT
- (715) VENT-POWER
- (9L1) HOME COMFORT PLUS PACKAGE
- (265) CODES/STANDARDS-CSA/CMVSS
- (21V) SOUND SYSTEM DELUXE
- (20F) DELUXE SOUND SYSTEM-WITHOUT
- (1B1) CODES/STANDARDS USA

SEE STYLING SHEET FOR ADDITIONAL INFORMATION.
 WITHOUT (29H) PLUG THE TWO, TWO PIN HOUSINGS TOGETHER ON WIRE ASM-SLIDEOUT.
 DIP SWITCHES MUST BE SET AS FOLLOWS: 1 OFF, 2 OFF, 3 OFF, 4 OFF, 5 OFF, 6 OFF, 7 OFF, 8 ON.

NOTES:



NOTES:

- WIRE ROUTED IN SIDEWALL.
- MOUNT MAGNET USING PILOT HOLES IN SCREEN DOOR FRAME. MOUNT WITH MAGNET TOWARD SWITCH
- MOUNT SWITCH AND SPACER TO BLOCK ON JAMB ADJUST HEIGHT TO MATCH MAGNET.
- SEE WIRING INSTL-FRONT END FOR ADDITIONAL INFORMATION.

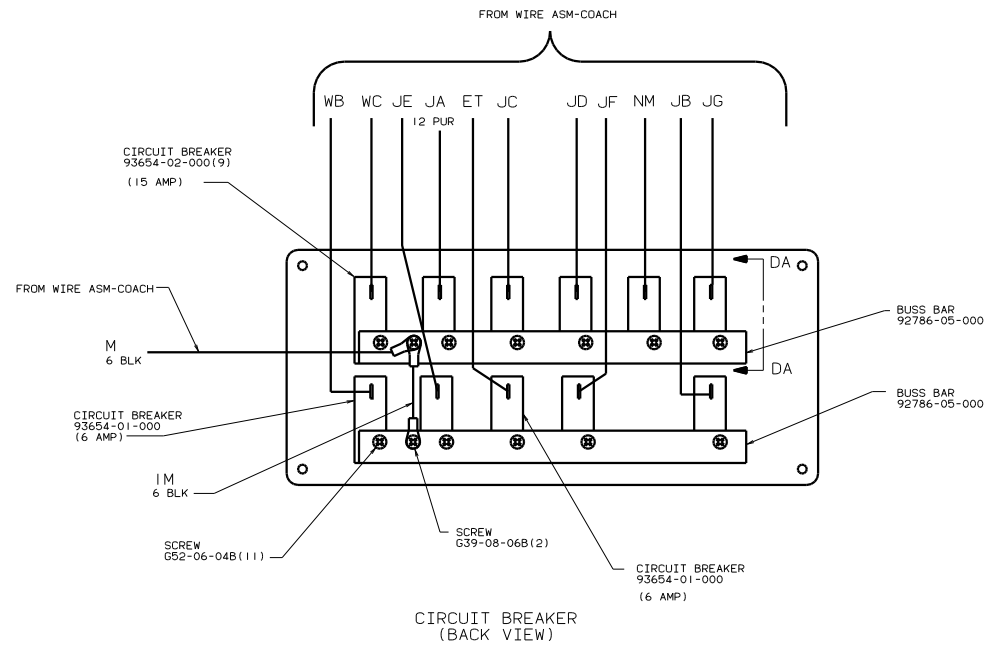
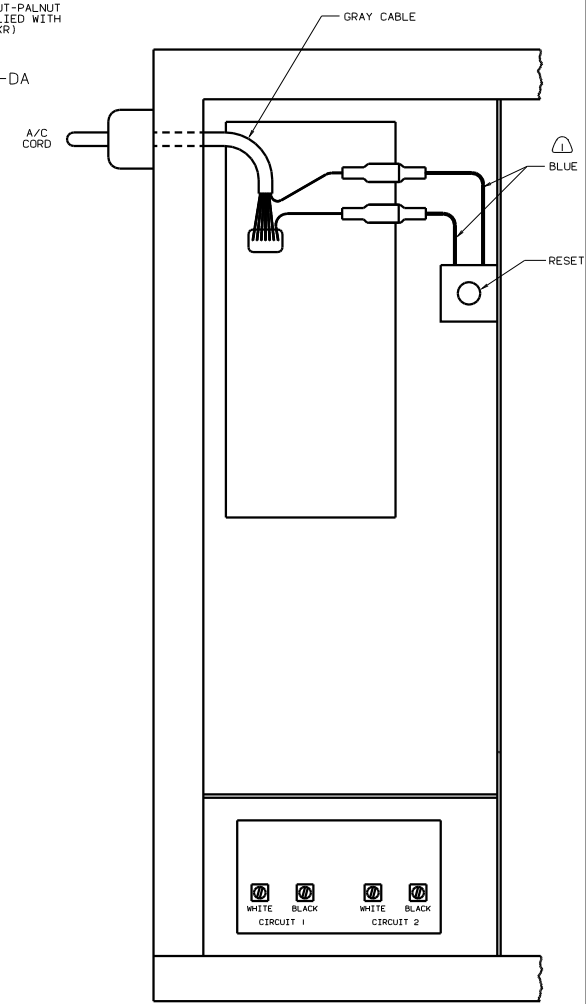
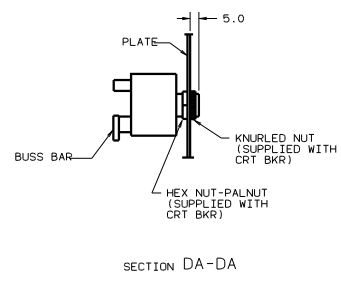
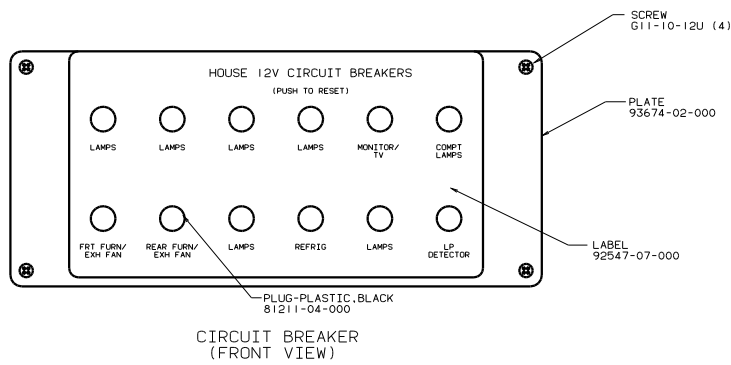
LEGEND:

- (18) CODES/STANDARDS-CSA/CMVSS
- (19) CODES/STANDARDS USA
- (26L) REAR STEREO SYSTEM W/CASSETTE
- (26R) REAR STEREO SYSTEM W/CD
- (26S) INVERTER/CHARGER-DC/AC W/O
- (42A) CLOCK W/ALARM
- (26K) REAR STEREO SYSTEM WITHOUT
- (26J) INVERTER/CHARGER-1.500 WATT
- (26I) SOUND SYSTEM DELUXE
- (10E) ENTRANCE STEP-ELEC.
- (10D) TV-REAR OI P36LD (26S)
- (18I) STEPELL COVER PANEL-SLIDING
- (18B) STEPELL COVER PANEL-MANUAL
- (64J) SEAT PED-6-WAY DR/PASS POWER

DATE: _____ TIME: _____

NO. OF SHEETS: _____ SHEET NO. 3 OF 6

135718

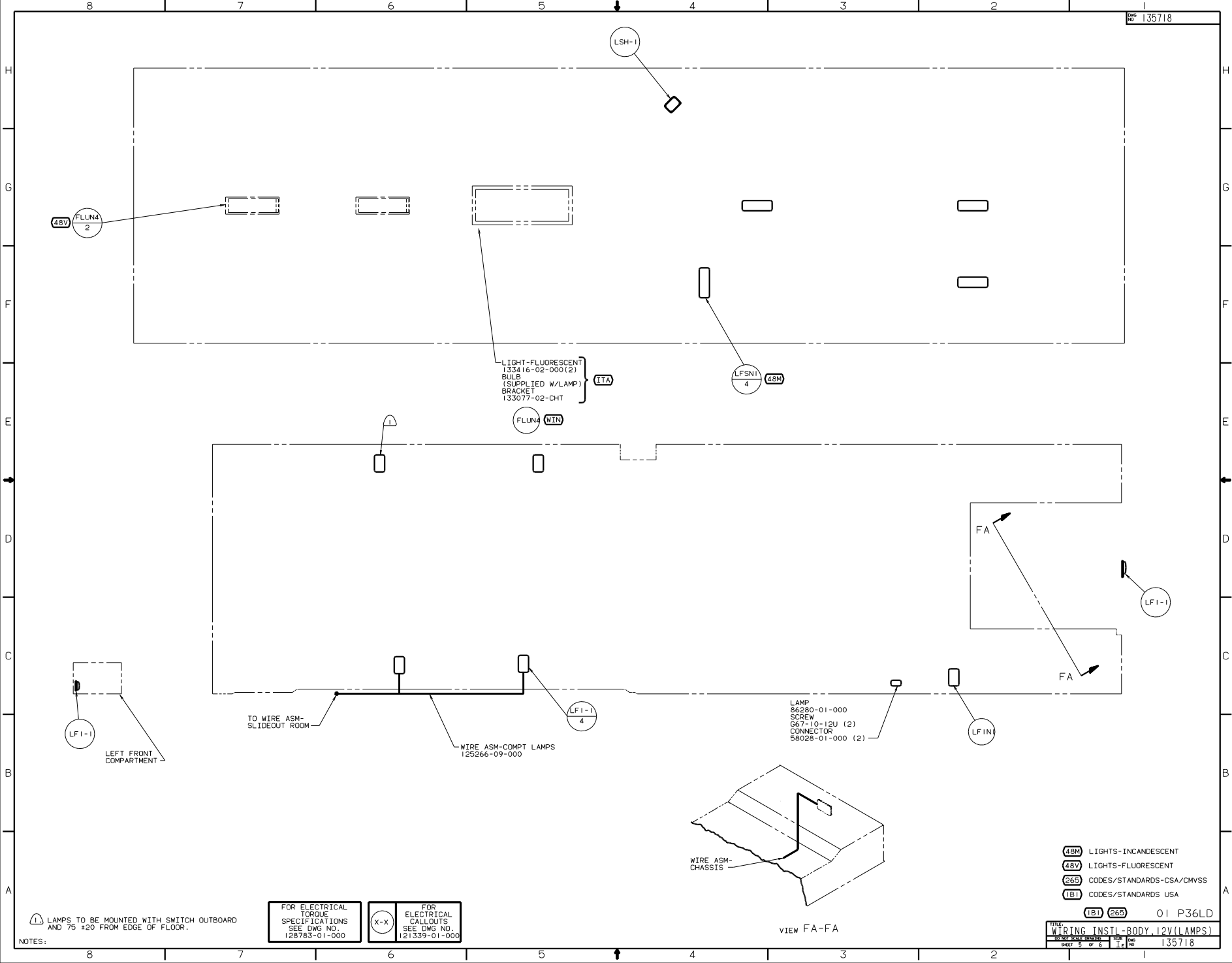


- DETAIL DA-DA
- (265) CODES/STANDARDS-CSA/CMVSS
 - (1B1) CODES/STANDARDS USA
 - (9L1) HOME COMFORT PLUS PACKAGE
 - (29H) HEAT PUMP-A/C CENTRAL

(1B1)	(265)	01 P36LD
TITLE: WIRING INSTL-BODY, 12V(BP)		
NO. OF SHEETS	TOTAL SHEETS	FIG. NO.
SHEET 4 OF 6	6	135718

NOTES:

CONNECT BLUE WIRES FROM RESET TO THE BLUE WIRES WITH SPADE TERMINALS ON A/C CORD WITH (29H) & (9L1) FEATURE.



LIGHT-FLUORESCENT
 133416-02-000(2)
 BULB
 (SUPPLIED W/LAMP)
 BRACKET
 133077-02-CHT } (ITA)

LAMP
 86280-01-000
 SCREW
 G67-10-12U (2)
 CONNECTOR
 58028-01-000 (2)

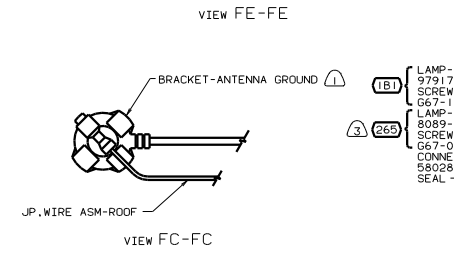
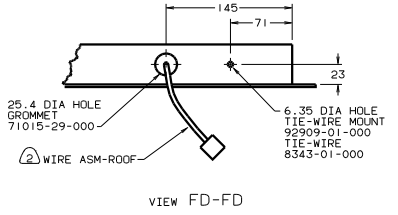
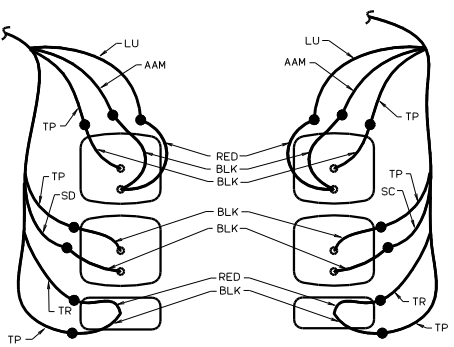
FOR ELECTRICAL TORQUE SPECIFICATIONS SEE DWG NO. 128783-01-000	(X-X)	FOR ELECTRICAL CALL-OUTS SEE DWG NO. 121339-01-000
--	-------	--

(48M) LIGHTS-INCANDESCENT
 (48V) LIGHTS-FLUORESCENT
 (265) CODES/STANDARDS-CSA/CWVSS
 (IB1) CODES/STANDARDS USA

IB1 265 01 P36LD
 TITLE: WIRING INSTL-BODY, 12V(LAMPS)
 SHEET 5 OF 6

NOTES:
 LAMPS TO BE MOUNTED WITH SWITCH OUTBOARD AND 75 ±20 FROM EDGE OF FLOOR.

VIEW FA-FA



- LAMP-MARKER, LENS, RED 133055-01-000 (5)
- LAMP-MARKER, BASE, WHITE 133055-03-000 (5)
- BULB 36196-01-000 (5)

WIRE ASM-BACKWALL, FL 132673-01-000

LIGHT ASM-STOP/TURN/TAIL, RED 133054-03-000 (2)

SCREW G11-08-12U (EXT) (4)

LIGHT ASM-TURN/AMBER 133054-04-000 (2)

SCREW G11-08-12U (EXT) (4)

LAMP ASM-BACKUP 106688-01-000 (2)

BULB 37934-01-000 (2)

SCREW G39-08-16U (EXT) (4)

LAMP-LICENSE 87201-01-000

SCREW G11-06-12U (EXT) (2)

LAMP-BRAKE_CENTER 136917-01-000

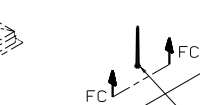
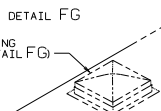
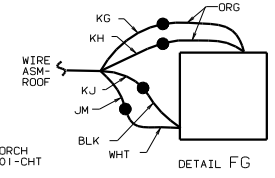
SCREW G39-06-16T (2)

BLK/WHT-YEL

BLK-WHT

- (5) TO TRAILER PLUG
- (5) CONNECTOR-PLUG, TRAILER (113589-01-000) TO BE SUPPLIED IN COACH WITH (240)
- (4) TAPE BRANCH BACK ALONG WIRE ASM WITH TAPE 8363-01-000.
- (3) INSTALL WITH WIRES TOWARD ROOF.
- (2) FASTEN TO VENT.
- (1) WRAP BRACKET LEGS AROUND ANTENNA BASE.

NOTES:



LAMP-MARKER, LENS, RED 111102-03-000 (2)

LAMP-MARKER, BASE, WHITE 111102-01-000 (2)

SCREW G11-08-12U (EXT) (4)

TO CHASSIS WIRING

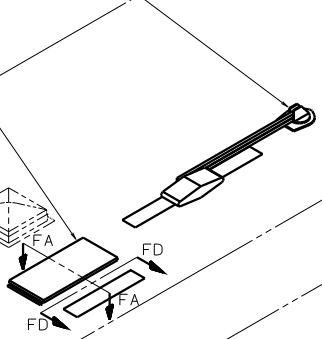
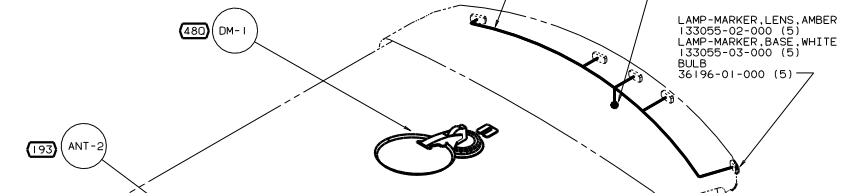
TO GROUND RING

HITCH ASM

SCREW 101618-01-000(EXT) (2)

CONNECTOR-SOCKET, TRAILER

VIEW: FF-FF (240)



LAMP-MARKER, LENS, AMBER 111102-02-000(2)

LAMP-MARKER, BASE, WHITE 111102-01-000 (2)

SCREW G11-08-12U (EXT) (4)

ANTENNA-RADIO 90944-01-000

EXTENDER-SHAFT, ANTENNA 109889-04-000

BRACKET-ANTENNA GROUND 108847-01-000

SEAL 77069-02-000(3)

766

1D5

ANTENNA-RADIO 90944-01-000

EXTENDER-SHAFT, ANTENNA 109889-04-000

BRACKET-ANTENNA GROUND 108847-01-000

SEAL 77069-02-000(2)

26L

25E

LAMP-MARKER, LENS, RED 111102-03-000 (2)

LAMP-MARKER, BASE, WHITE 111102-01-000 (2)

SCREW G11-08-12U (EXT) (4)

BUMPER

TO WIRE ASM-DIGITAL ELEV SENSOR

FROM WIRE ASM-ROOF

GRN

RED

WHT

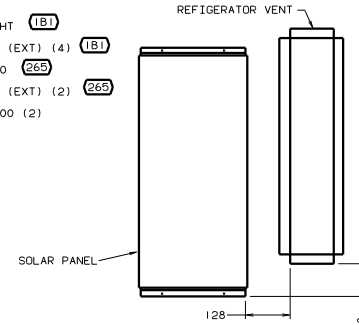
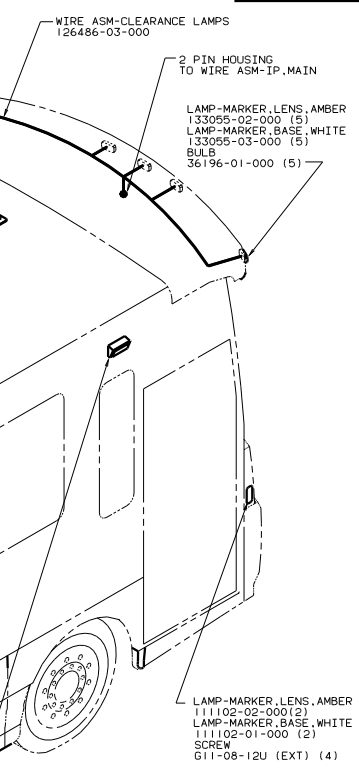
BLK

JP

JA

DIGITAL SATELLITE ELEVATION SENSOR

DETAIL FB (480)



- (26L) REAR STEREO SYSTEM W/CASSETTE
- (25E) REAR STEREO SYSTEM W/CD
- (240) TRAILER HITCH
- (105) ENTERTAINMENT CENTR/EXT W/CD
- (766) ENTERTAINMENT CTR/EXT CASSETTE
- (290) SOLAR PANEL-10 WATT
- (265) CODES/STANDARDS-CSA/CMVSS
- (181) CODES/STANDARDS USA

(181) (265) 01 P36LD

WIRING INSTL-BODY, 12V(EXT)

135718