



DANGER

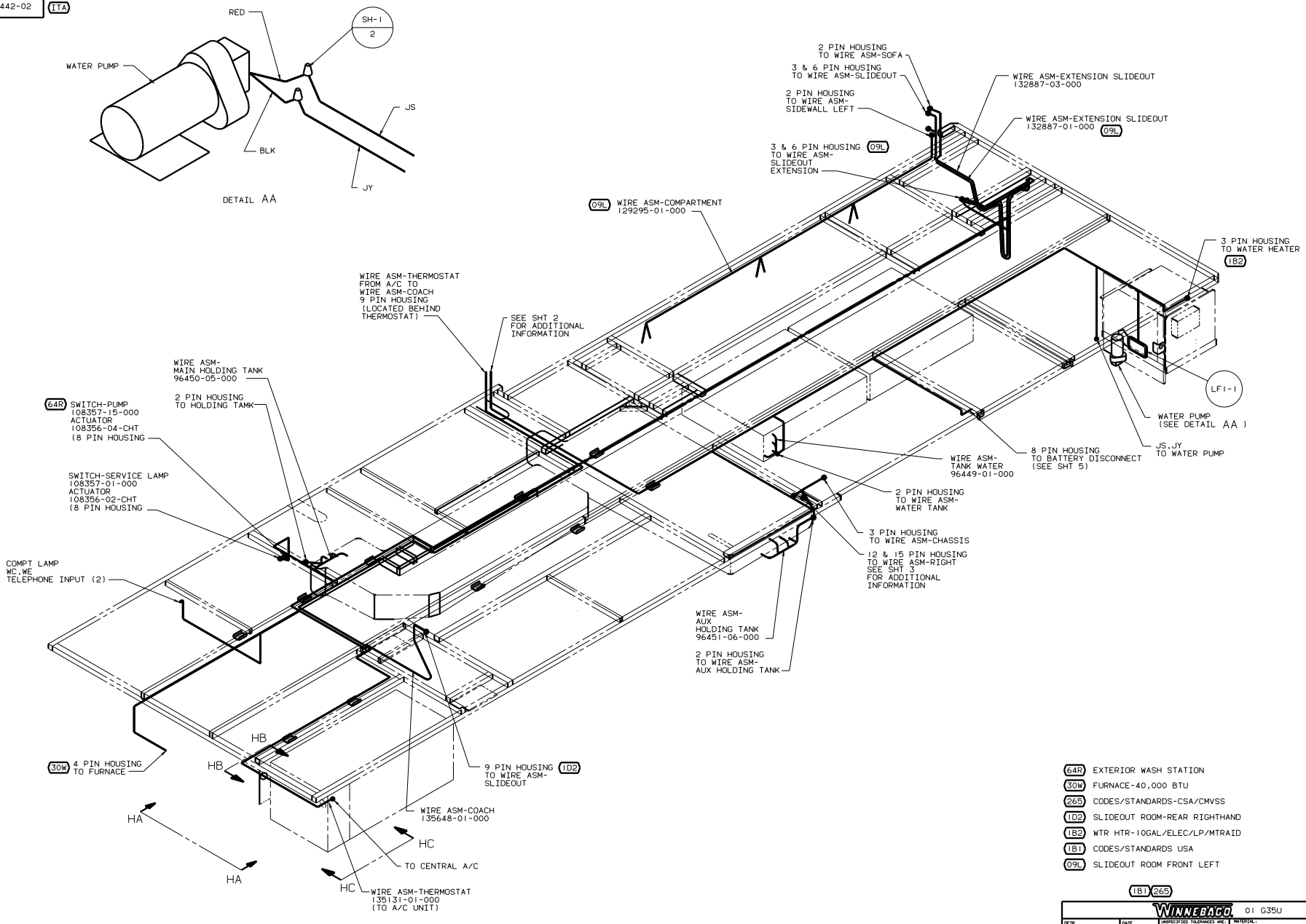
Danger of electrical shock, burns or death. Always remove all power sources before attempting any repair, service or diagnostic work. Power can be present from shore power, generator, inverter or battery. All power sources must be disabled and secured before performing any service.



CAUTION

If you lack the skills, tools or equipment to perform diagnostic or repair work leave such work to an authorized Winnebago Industries dealer or other qualified shop.

DWG NO.
135442-01
135442-02



(64R) SWITCH-PUMP
108357-15-000
ACTUATOR
108356-04-CHT
(8 PIN HOUSING)

SWITCH-SERVICE LAMP
108357-01-000
ACTUATOR
108356-02-CHT
(8 PIN HOUSING)

COMPT LAMP
WC, WE
TELEPHONE INPUT (2)

(30W) 4 PIN HOUSING
TO FURNACE

WIRE ASM-
MAIN HOLDING TANK
96450-05-000

2 PIN HOUSING
TO HOLDING TANK

WIRE ASM-THERMOSTAT
FROM A/C TO
WIRE ASM-COACH
9 PIN HOUSING
(LOCATED BEHIND
THERMOSTAT)

SEE SHT 2
FOR ADDITIONAL
INFORMATION

(09L) WIRE ASM-COMPARTMENT
129295-01-000

WIRE ASM-
AUX
HOLDING TANK
96451-06-000

2 PIN HOUSING
TO WIRE ASM-
AUX HOLDING TANK

2 PIN HOUSING
TO WIRE ASM-
WATER TANK

3 PIN HOUSING
TO WIRE ASM-CHASSIS

12 & 15 PIN HOUSING
TO WIRE ASM-RIGHT
SEE SHT 3
FOR ADDITIONAL
INFORMATION

8 PIN HOUSING
TO BATTERY DISCONNECT
(SEE SHT 5)

WIRE ASM-
TANK WATER
96449-01-000

WIRE ASM-EXTENSION SLIDEOUT
132887-03-000

WIRE ASM-EXTENSION SLIDEOUT
132887-01-000 (09L)

2 PIN HOUSING
TO WIRE ASM-SOFA
3 & 6 PIN HOUSING
TO WIRE ASM-SLIDEOUT

2 PIN HOUSING
TO WIRE ASM-
SIDEWALL LEFT

3 & 6 PIN HOUSING
TO WIRE ASM-
SLIDEOUT
EXTENSION (09L)

3 PIN HOUSING
TO WATER HEATER
(1B2)

(LF1-I)

WATER PUMP
(SEE DETAIL AA)

JS, JY
TO WATER PUMP

- (64R) EXTERIOR WASH STATION
- (30W) FURNACE-40,000 BTU
- (265) CODES/STANDARDS-CSA/CMVSS
- (1D2) SLIDEOUT ROOM-REAR RIGHTHAND
- (1B2) WTR HTR-10GAL/ELEC/LP/MTRAIID
- (1B1) CODES/STANDARDS USA
- (09L) SLIDEOUT ROOM FRONT LEFT

(1B1) 265

2. SEE WIRING DIAGRAM-BODY FOR ADDITIONAL INFORMATION.

1. ALL WIRE TO BE CLAMPED WITH CLAMP 10495-01-000
OR WIRE TIE 8343-02-000 EVERY 600
UNLESS OTHERWISE SPECIFIED.

NOTES:

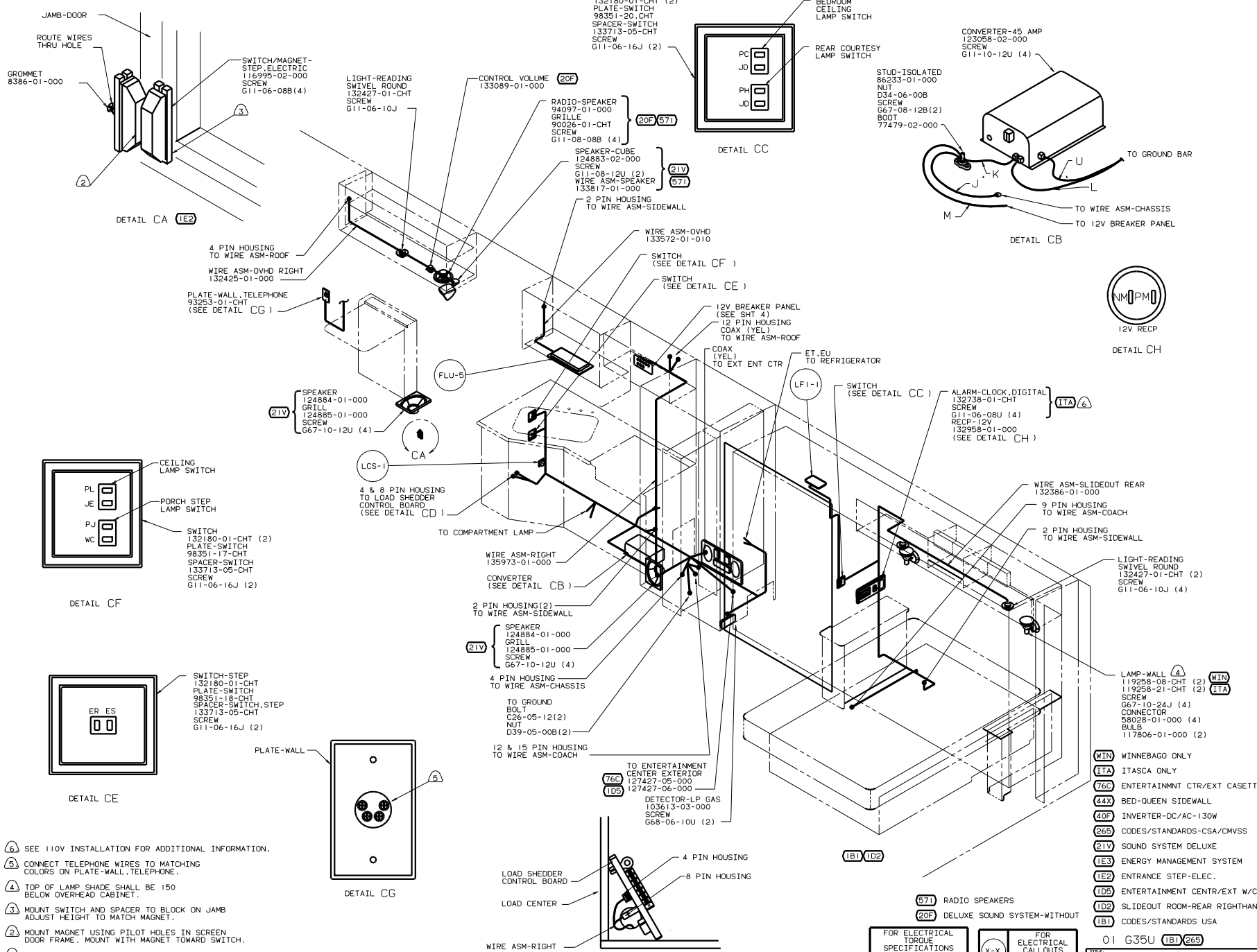
FOR ELECTRICAL
TORQUE
SPECIFICATIONS
SEE DWG NO.
128783-01-000

FOR
ELECTRICAL
CALLOUTS
SEE DWG NO.
121339-01-000

WINNEBAGO 01 G35U

DATE	BY	DESCRIPTION

WIRING INSTL-BODY, 12V (RF)
SHEET 1 OF 3
REF: 131744-M

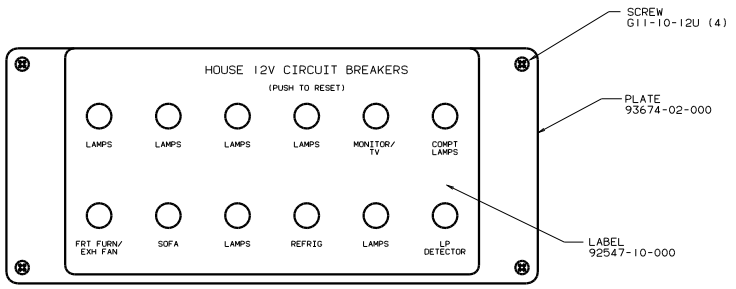


- ④ SEE 110V INSTALLATION FOR ADDITIONAL INFORMATION.
- ⑤ CONNECT TELEPHONE WIRES TO MATCHING COLORS ON PLATE-WALL, TELEPHONE.
- ④ TOP OF LAMP SHADE SHALL BE 150 BELOW OVERHEAD CABINET.
- ③ MOUNT SWITCH AND SPACER TO BLOCK ON JAMB ADJUST HEIGHT TO MATCH MAGNET.
- ② MOUNT MAGNET USING PILOT HOLES IN SCREEN DOOR FRAME. MOUNT WITH MAGNET TOWARD SWITCH.
- ① WIRE ROUTED IN SIDEWALL.

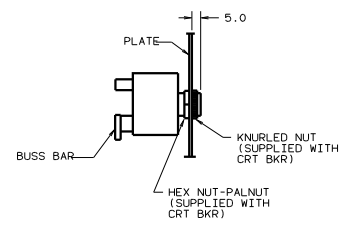
- (WIN) WINNEBAGO ONLY
- (ITA) ITASCA ONLY
- (76C) ENTERTAINMENT CTR/EXT CASSETTE
- (44X) BED-QUEEN SIDEWALL
- (40P) INVERTER-DC/AC-130W
- (26S) CODES/STANDARDS-CSA/CMVSS
- (21V) SOUND SYSTEM DELUXE
- (IE3) ENERGY MANAGEMENT SYSTEM
- (IE2) ENTRANCE STEP-ELEC.
- (10S) ENTERTAINMENT CENTR/EXT W/CD
- (1D2) SLIDEOUT ROOM-REAR RIGHTHAND
- (1B1) CODES/STANDARDS USA

FOR ELECTRICAL TORQUE SPECIFICATIONS SEE DWG NO. 128783-01-000

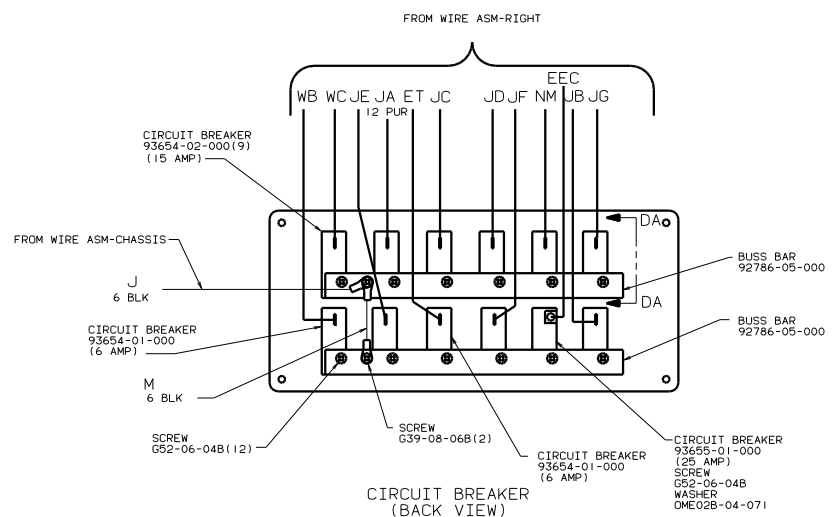
X-X FOR ELECTRICAL CALLOUTS SEE DWG NO. 121339-01-000



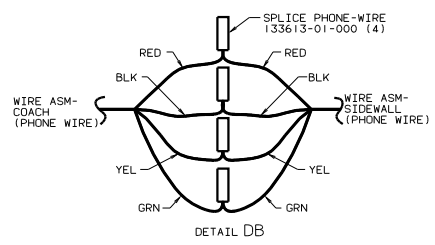
CIRCUIT BREAKER (FRONT VIEW)



SECTION DA-DA



CIRCUIT BREAKER (BACK VIEW)



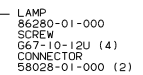
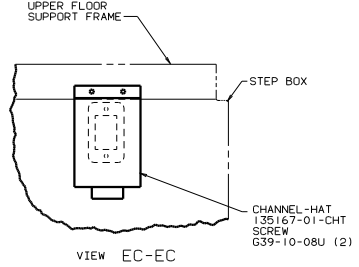
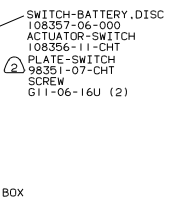
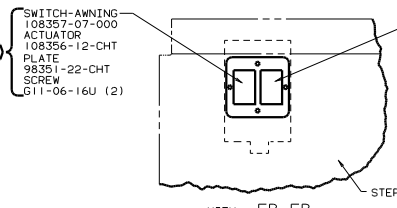
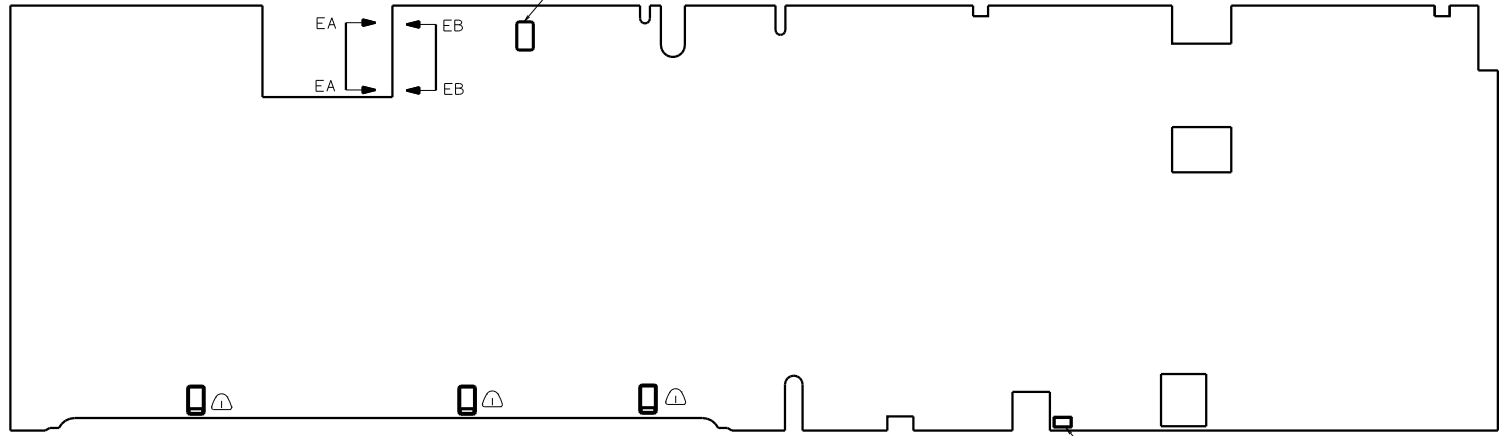
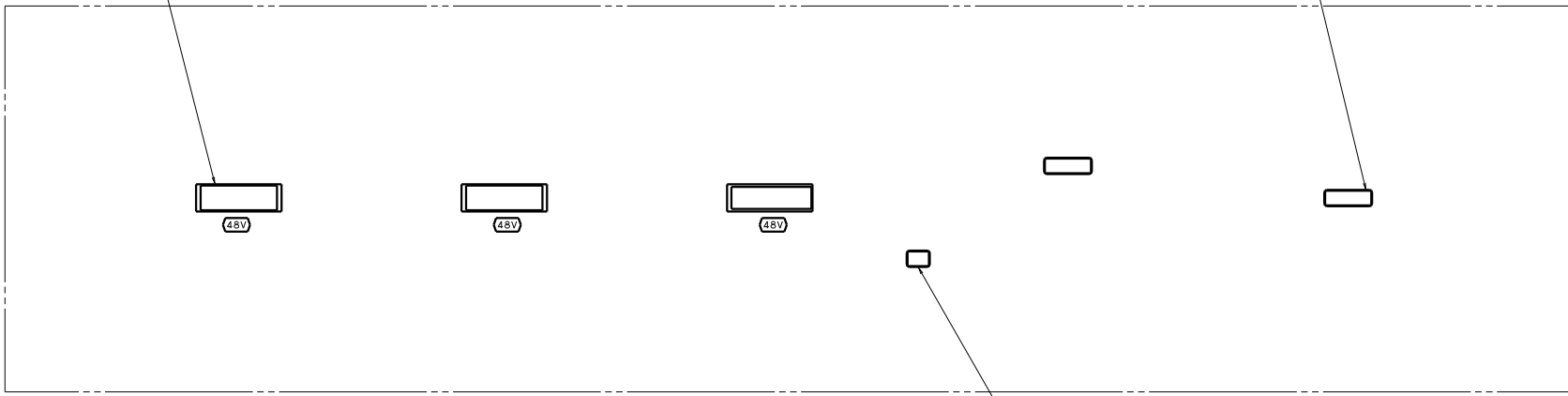
DETAIL DB

NOTES:

FOR ELECTRICAL TORQUE SPECIFICATIONS SEE DWG NO. 128783-01-000

(265) CODES/STANDARDS-CSA/CMVSS
 (181) CODES/STANDARDS USA
 01 G35U (181) (265)

TITLE		WIRING INSTL-BODY (12 BP)	
NO	REV	DATE	BY
1	1		
SHEET 4 OF 9		135442	



NOTES:
 (2) WITHOUT (52N).
 (1) LAMPS LOCATED IN SLIDEOUT COMPARTMENTS.

SWITCH-AWNING
 108357-07-000
 ACTUATOR
 108356-12-CHT
 PLATE
 98351-22-CHT
 SCREW
 G11-06-16U (2)

SWITCH-BATTERY.DISC
 108357-06-000
 ACTUATOR-SWITCH
 108356-11-CHT
 PLATE-SWITCH
 98351-07-CHT
 SCREW
 G11-06-16U (2)

UPPER FLOOR
 SUPPORT FRAME
 STEP BOX
 CHANNEL-HAT
 135167-01-CHT
 SCREW
 G39-10-08U (2)

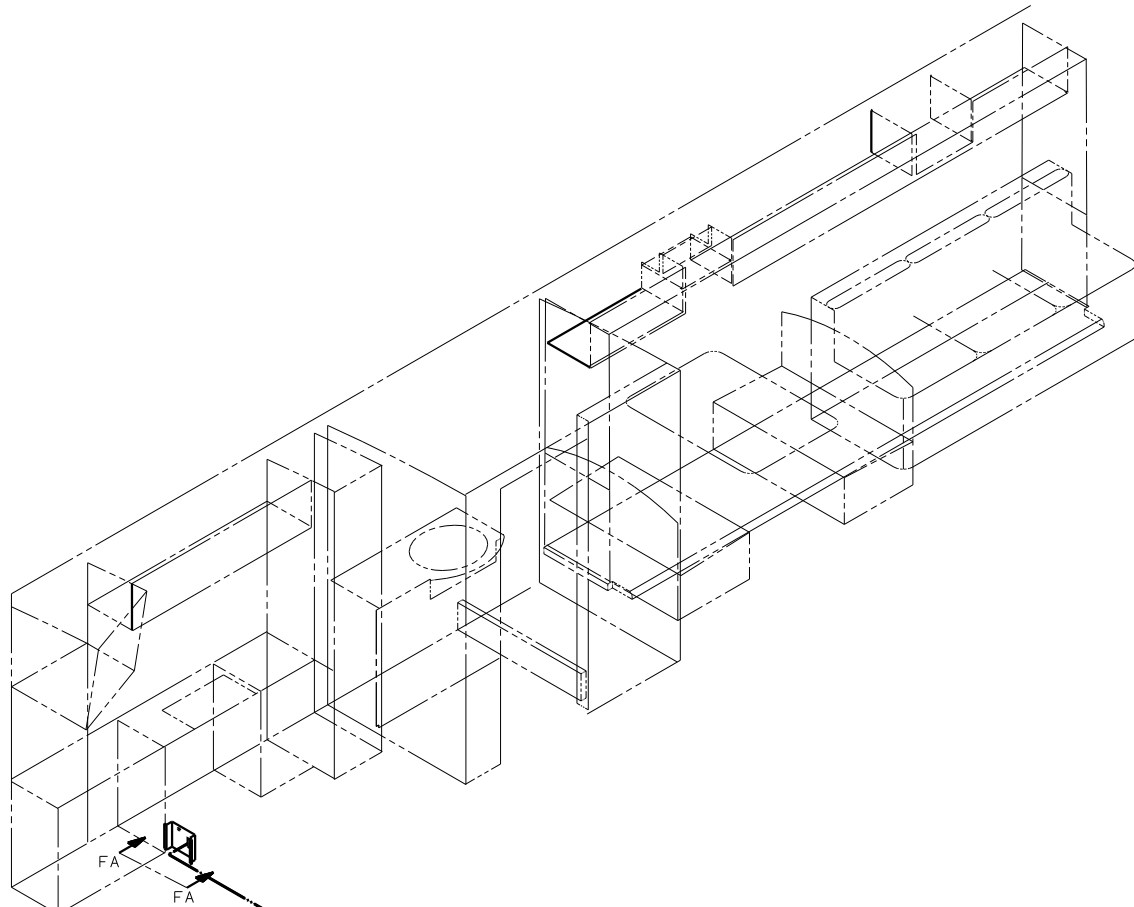
LAMP
 86280-01-000
 SCREW
 G67-10-12U (4)
 CONNECTOR
 58028-01-000 (2)

- (52N) AWNING - PATIO, ELECTRIC
- (48V) LIGHTS-FLUORESCENT
- (48M) LIGHTS-INCANDESCENT
- (265) CODES/STANDARDS-CSA/CMVSS
- (1B1) CODES/STANDARDS USA

FOR ELECTRICAL
 TORQUE
 SPECIFICATIONS
 SEE DWG NO.
 128763-01-000

FOR
 ELECTRICAL
 CALLOUTS
 SEE DWG NO.
 121339-01-000

01 G35U (1B1) (265)
 TITLE: WIRING INSTL-BODY,12V (CL)
 SHEET 5 OF 9
 135442



WIRE ASM-COACH(REF)
(SEE SHEET 1)

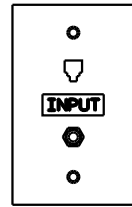
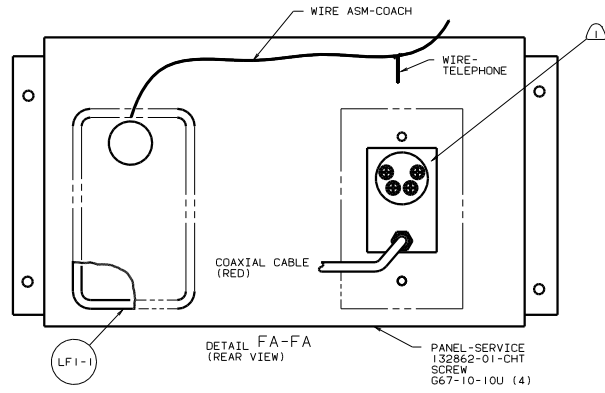


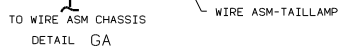
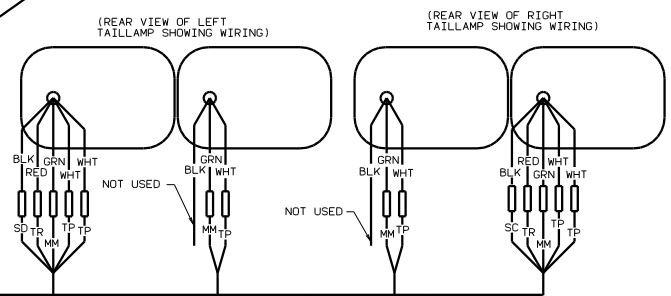
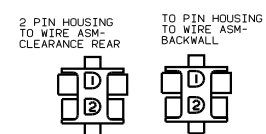
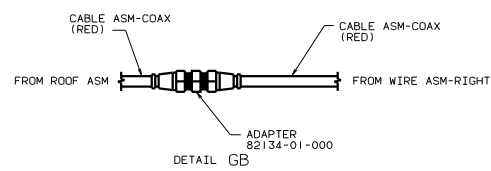
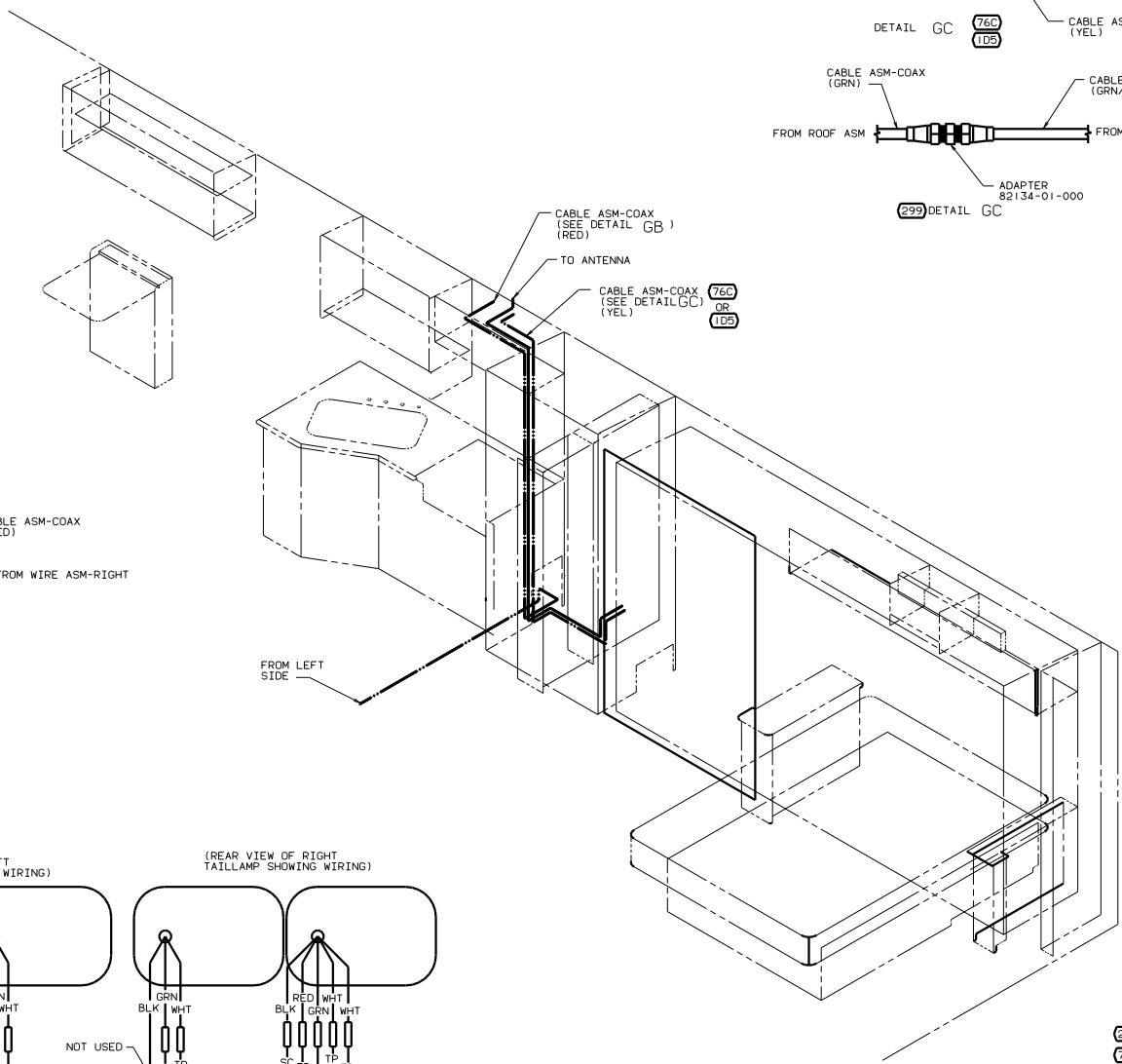
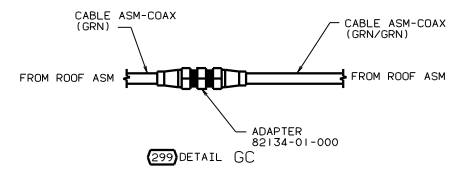
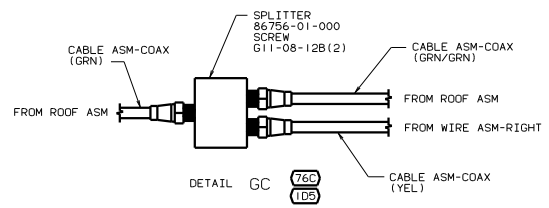
PLATE-WALL, TELEPHONE/COAX
 130686-01-CHT
 LABEL
 87236-01-000
 SCREW
 G39-08-08U (2)

CONNECT TELEPHONE WIRES TO MATCHING COLORS ON PLATE-WALL, TELEPHONE

(265) CODES/STANDARDS-CSA/CMVSS
 (1B1) CODES/STANDARDS USA

FOR ELECTRICAL CALLOUTS SEE DWG NO. 121339-01-000

01 G35U (1B1) (265)
 WIRING INSTL-BODY, 12V (COAX L)
 SHEET 6 OF 9
 135442

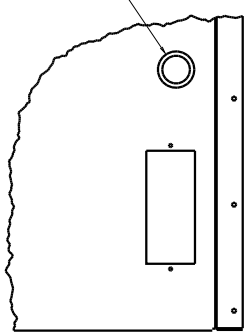


- (299) ENTERTAINMENT CENTER EXT. W/O
- (76C) ENTERTAINMENT CENTER EXT CASSETTE
- (1D5) ENTERTAINMENT CENTER EXT W/CD
- (265) CODES/STANDARDS-CSA/CMVSS
- (1B1) CODES/STANDARDS USA

(X-X) FOR ELECTRICAL CALLOUTS SEE DWG NO. 121339-01-000

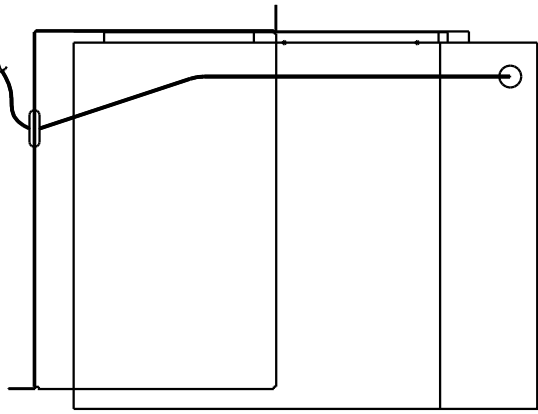
GROMMET
23942-01-000

WIRE ASM-THERMOSTAT
(COIL UP AND TIE EXCESS
WIRE IN BASEMENT AREA
WITH WIRE TIE 8343-02-000)

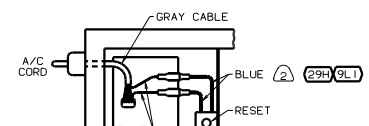


VIEW HB-HB

TO THERMOSTAT



VIEW HA-HA

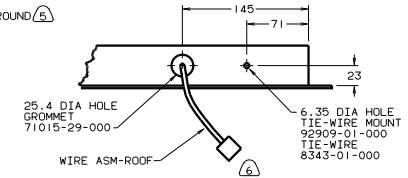
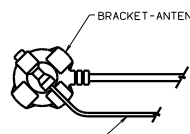


VIEW HC-HC

- NOTES:
- Ⓐ CONNECT BLUE WIRES FROM RESET TO THE BLUE WIRES WITH SPADE TERMINALS ON A/C CORD WITH (29H) & (9L1) FEATURE.
 - Ⓐ SEE WIRING INSTL-BODY.110V FOR ADDITIONAL INFORMATION.

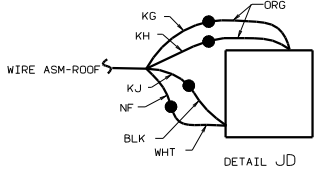
- (9L1) HOME COMFORT PLUS PACKAGE
- (29H) HEAT PUMP-A/C CENTRAL
- (265) CODES/STANDARDS-CSA/CMVSS
- (1B1) CODES/STANDARDS USA

01 G35U (1B1) (265)



VIEW JA-JA

VIEW JB-JB



DETAIL JD

FOR WIRING (SEE DETAIL JD)

- (1B1) LAMP 97917-01-CHT
- (1B1) SCREW G67-10-12U(EXT) (4)
- (265) LAMP 8089-02-000
- (265) SCREW G67-06-10T(EXT) (2)
- (265) CONNECTOR 58028-01-000 (2)
- (265) SEAL

- WIRE ASM-CLEARANCE LAMPS,RR 132729-01-000
- LAMP-CLEARANCE, RED 133055-01-000 (5)
- SCREW G39-08-16T (10)
- BASE 133055-03-000 (5)
- BULB 36196-01-000 (5)

- LAMP ASM-BRAKE 135916-01-000
- SCREW G11-08-20T (2)
- CONNECTOR 58028-01-000 (2)
- BLK/WHT - YEL
- BLK - WHT

- LAMP 87201-01-000
- SCREW G11-06-12U (EXT) (2)

- LAMP-MARKER, BASE 111102-01-000 (2)
- LAMP-MARKER, LENS, RED 111102-03-000 (2)
- SCREW G39-08-12U (EXT) (4)

- LIGHT ASM-STOP/TURN/TAIL, RED 115632-01-CHT (2)
- SCREW G11-08-12B (8)(EXT)
- LIGHT ASM-STOP/TAIL/BACKUP 115632-03-CHT (2)
- CONNECTOR 58028-01-000 (2)
- SCREW G11-08-12B (8)(EXT)

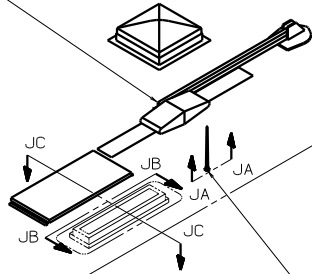
- WIRE ASM-CLEARANCE LAMPS 126486-01-000

- LAMP-CLEARANCE AMBER 102520-01-000 (5)
- 132978-01-000 (5)
- SCREW G39-08-16T (10)
- GASKET 102541-01-000 (5)
- BULBS 36196-01-000 (5)

CONNECTS TO WIRE ASM-IP, MAIN

- (193) ANT-2

- (480) DM-1



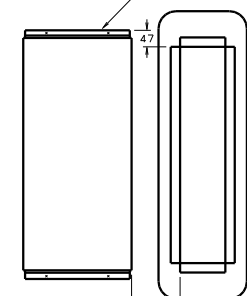
- LAMP-MARKER, BASE 111102-01-000 (2)
- LAMP-MARKER, LENSE, AMBER 111102-02-000 (2)
- RIVIT 118626-02-CHT (4)

- LAMP 97917-01-CHT
- SCREW G67-10-12U(EXT) (4)
- LAMP 8089-02-000
- SCREW G67-06-10T(EXT) (2)
- CONNECTOR 58028-01-000 (2)
- SEAL

- ANTENNA-SHAFT EXTENDER 109889-04-000
- BRACKET-ANTENNA GROUND 108847-01-000
- ANTENNA 90944-01-000
- CABLE-ANTENNA EXTENSION 77069-02-000
- SEAL

- LAMP-MARKER, BASE 111102-01-000 (2)
- LAMP-MARKER, LENSE, AMBER 111102-02-000 (2)
- SCREW G11-08-12U(EXT) (4)

- SOLAR PANEL 115504-01-000
- SCREW G11-08-16U (4)



VIEW JC-JC

- (6) FASTEN TO VENT.
- (5) WRAP BRACKET LEGS AROUND ANTENNA BASE.
- (4) CONNECTOR-PLUG, TRAILER (113589-01-000) TO BE SUPPLIED LOOSE IN COACH WITH TRAILER TOW PACKAGE.
- (3) TAPE BRANCH BACK ALONG WIRE ASM WITH TAPE 8363-01-000.
- (2) SEE DWG 76319-01-000 FOR INSTALLATION OF TV ANTENNA.

- (8) HOUSING TO BE CLAMPED ABOVE TAILLAMP.
- (7) ADD RUBBER BUMPERS TO ROOF UNDER EACH END OF ANTENNA TO PREVENT CONTACT WITH ROOF.

- (WIN) WINNEBAGO ONLY
- (ITA) ITASCA ONLY
- (76C) ENTERTAINMENT CTR/EXT CSETTE
- (240) TRAILER HITCH
- (1D5) ENTERTAINMENT CTR-EXT-W/CD
- (193) TV ANTENNA
- (480) SATELLITE DISH
- (290) SOLAR PANEL - 10 WATT
- (265) CODES/STANDARDS-CUSA/CMVSS
- (1B1) CODES STANDARDS/USA

FOR ELECTRICAL CALLOUTS SEE DWG NO. 121339-01-000