



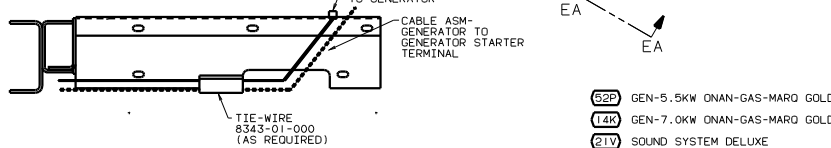
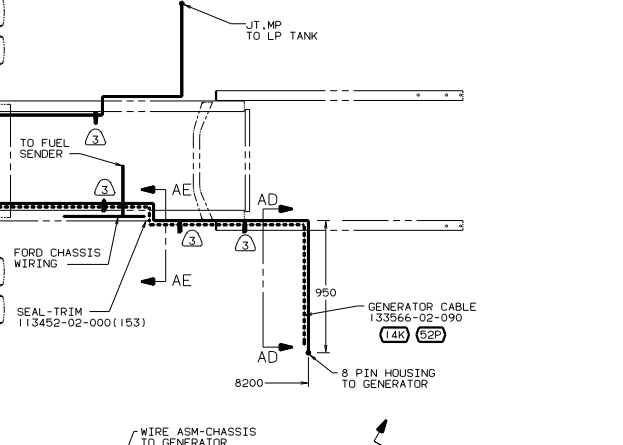
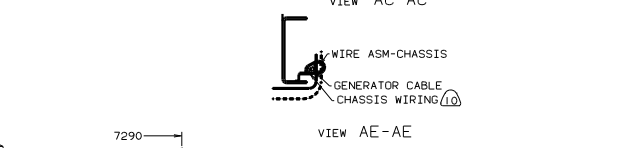
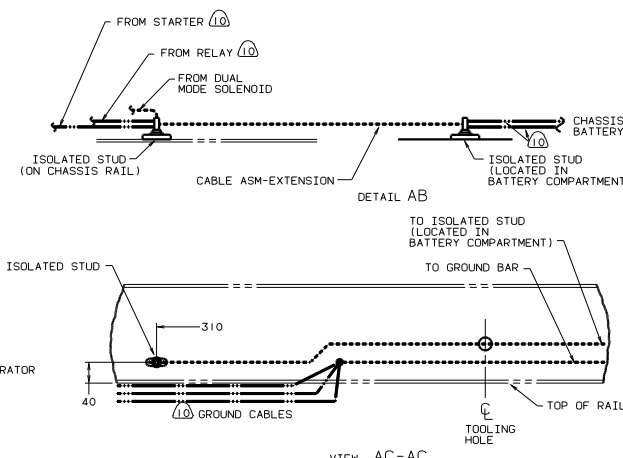
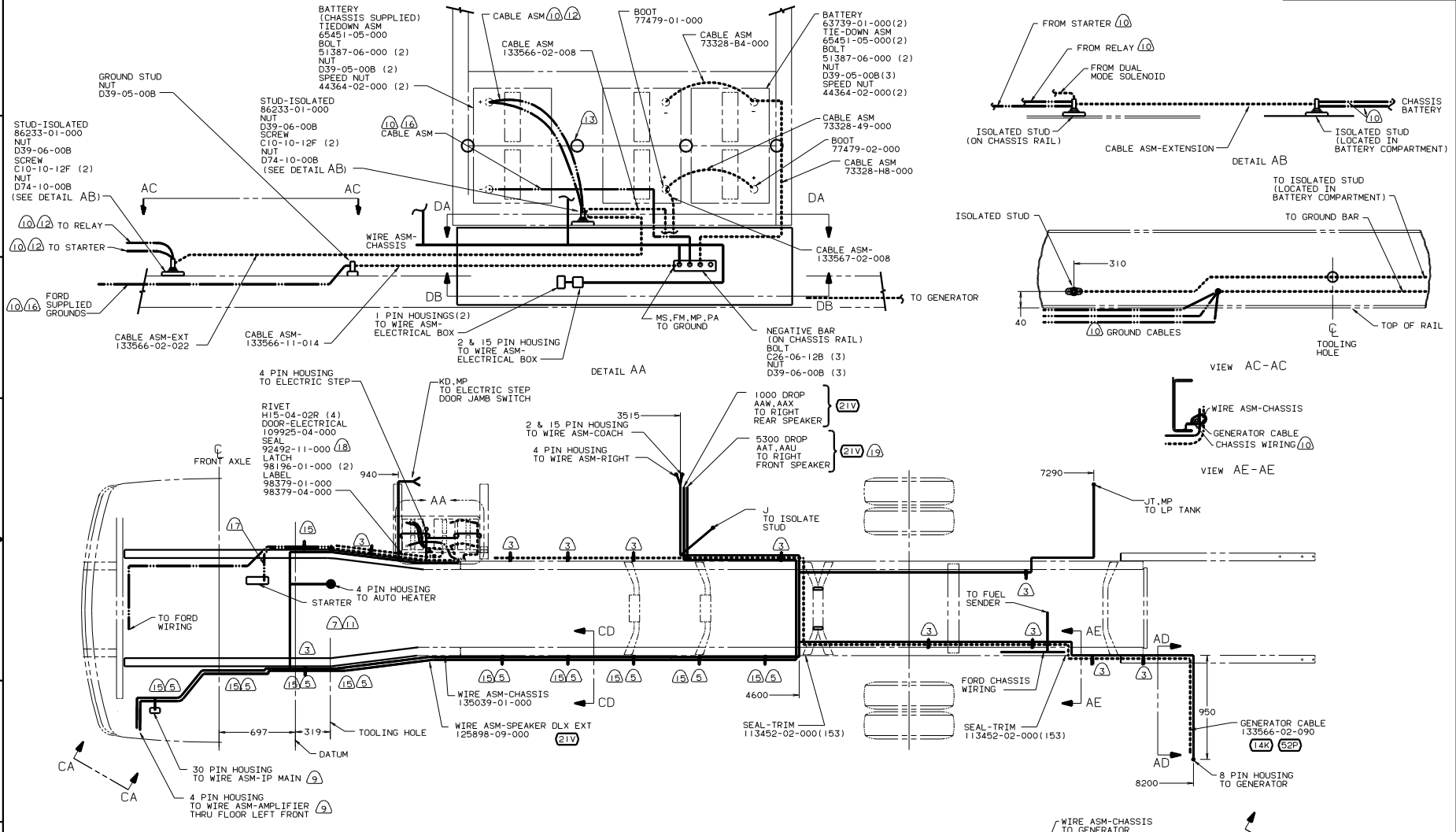
**DANGER**

**Danger of electrical shock, burns or death.** Always remove all power sources before attempting any repair, service or diagnostic work. Power can be present from shore power, generator, inverter or battery. All power sources must be disabled and secured before performing any service.



**CAUTION**

If you lack the skills, tools or equipment to perform diagnostic or repair work leave such work to an authorized Winnebago Industries dealer or other qualified shop.



- (12) CUT 14GA WIRE, 6 & 4GA CABLES 500 MM FROM BATTERY TERMINAL, ADD TERMINAL 8331-01-000(2) TO 4GA CABLES AND TERMINAL 8350-01-000(2) TO 14GA WIRES & 6GA CABLES. CONNECT TERMINALS TO ISOLATED STUDS AS SHOWN IN DETAIL AB
- (11) USE TWO EXTENSIONS WHEN CHASSIS IS STRETCHED FROM 208" TO 228"
- (10) SUPPLIED WITH CHASSIS.
- (9) SEE WIRING INSTL-FRONT END FOR WIRING CONNECTIONS.
- (8) COVER WITH CONDUIT-41953-10-000 & 41953-11-000 AS REQUIRED.
- (7) DISCONNECT EXISTING CHASSIS WIRE ASM NEAR TRANSMISSION AND INSERT WIRE ASM-FD CHASSIS EXT.
- (6) ROUT WIRES & CABLE INSIDE CHASSIS RAIL AT THIS POINT AND TO THE REAR.
- (5) CLAMP 10497-03-000, SCREW G39-08-12B.
- (4) CLAMP 83609-01-000, SCREW G39-08-12B.
- (3) CLAMP 83610-01-000, SCREW G39-08-12B.
2. SECURE CONDUIT 41953-01-000, 41953-02-000 AND 41953-03-000 OVER ALL WIRES IN CONTACT WITH SHARP EDGES.
1. LEGEND: — WINNEBAGO, ..... CABLE, — CHASSIS SUPPLIED.

- (19) WIRES TO BE ROUTED ABOVE SUB-FLOOR TO FRONT SPEAKER.
- (18) PLACE AROUND ENTIRE PERIMETER OF DOOR WITH SEAM AT TOP.
- (17) SECURE SO WIRES DO NOT CONTACT EXHAUST.
- (16) TRIM CABLE TO 500MM, ADD TERMINALS 8348-01-000(2).
- (15) WITH SLIDEOUT ROOM USE CLAMP 83610-03-000 & G39-08-12B
- (14) ROUTE WIRES & CABLE OVER SPRING HANGER & ON TOP OF CHASSIS RAIL AT THIS POINT.
- (13) USE TWO NUTS HERE TO ACCOUNT FOR BATTERY HEIGHT DIFFERENCE.

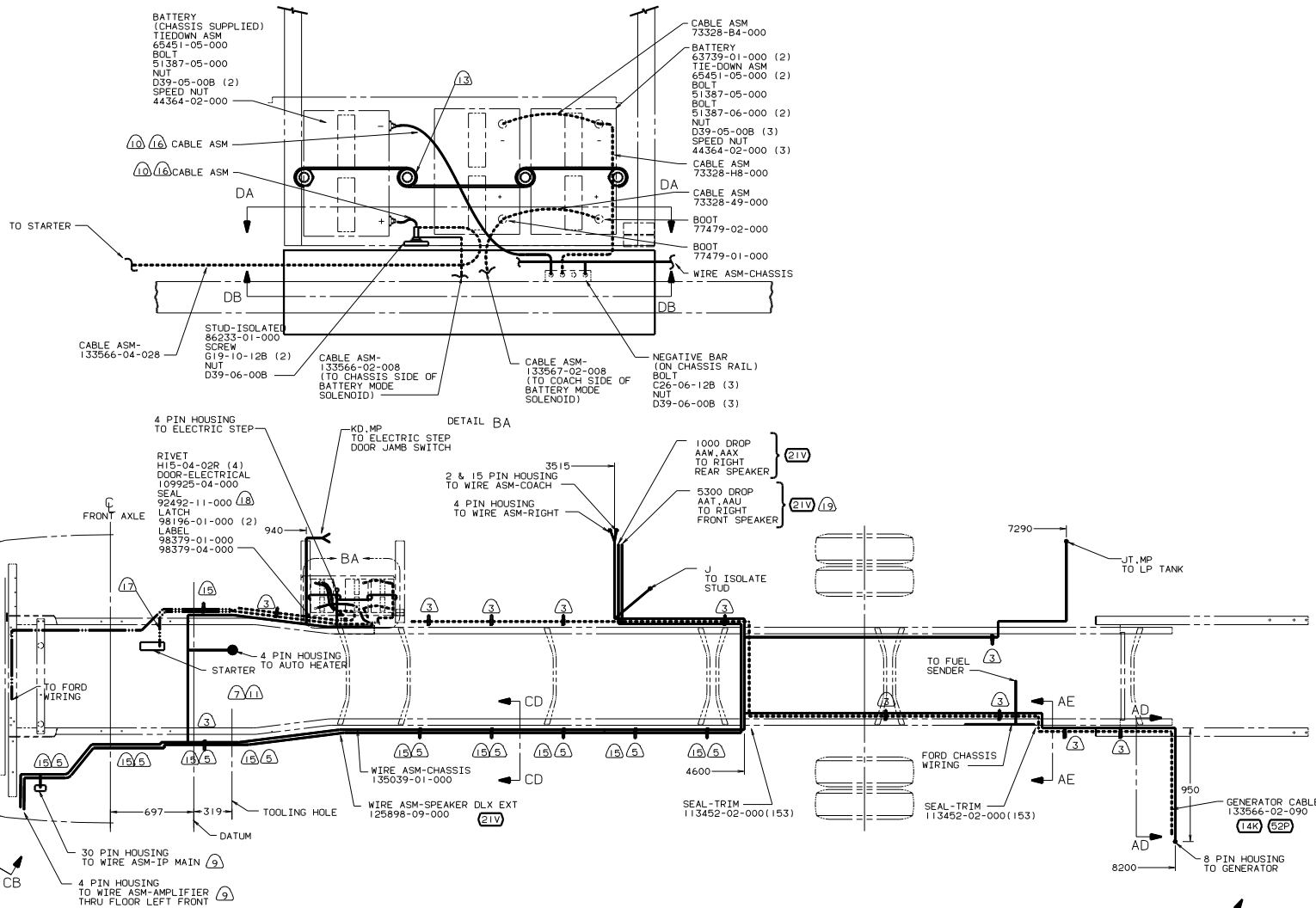
FOR ELECTRICAL TORQUE SPECIFICATIONS SEE DWG NO. 128783-01-000

- (52P) GEN-5.5KW ONAN-GAS-MARO GOLD  
(14R) GEN-7.0KW ONAN-GAS-MARO GOLD  
(21V) SOUND SYSTEM DELUXE  
(16M) FORD CHASSIS 20.500#V110 ENG  
(265) CODES/STANDARDS-CSA/CMVSS  
(181) CODES/STANDARDS-USA

WINNEBAGO 01 G37G			
OF IN	DATE	UNSPECIFIED TOLERANCES ARE:	MATERIAL
CHP	DATE	WHOLE OR 1/16"	
FPE	DATE	ONE-PLACE (1/32)"	
FVE	DATE	TWO-PLACE (1/64)"	
MP	DATE	MILL	
COMP	DATE	THIRD-PLACE (1/128)"	

LANDING: \_\_\_\_\_ TITLE: \_\_\_\_\_  
 DRAWN BY: \_\_\_\_\_ CHECKED BY: \_\_\_\_\_  
 SCALE: \_\_\_\_\_ SHEET 1 OF 5  
 ALL DIMENSIONS ARE IN MILLIMETERS

**WIRING INSTL-CHASSIS**  
 REF 131737-E 135038



12 CUT 14GA WIRE, 6 & 4GA CABLES 500 MM FROM BATTERY TERMINAL, ADD TERMINAL 8331-01-000(2) TO 4GA CABLES AND TERMINAL 8350-01-000(2) TO 14GA WIRES & 6GA CABLES. CONNECT TERMINALS TO ISOLATED STUDS AS SHOWN IN DETAIL BA

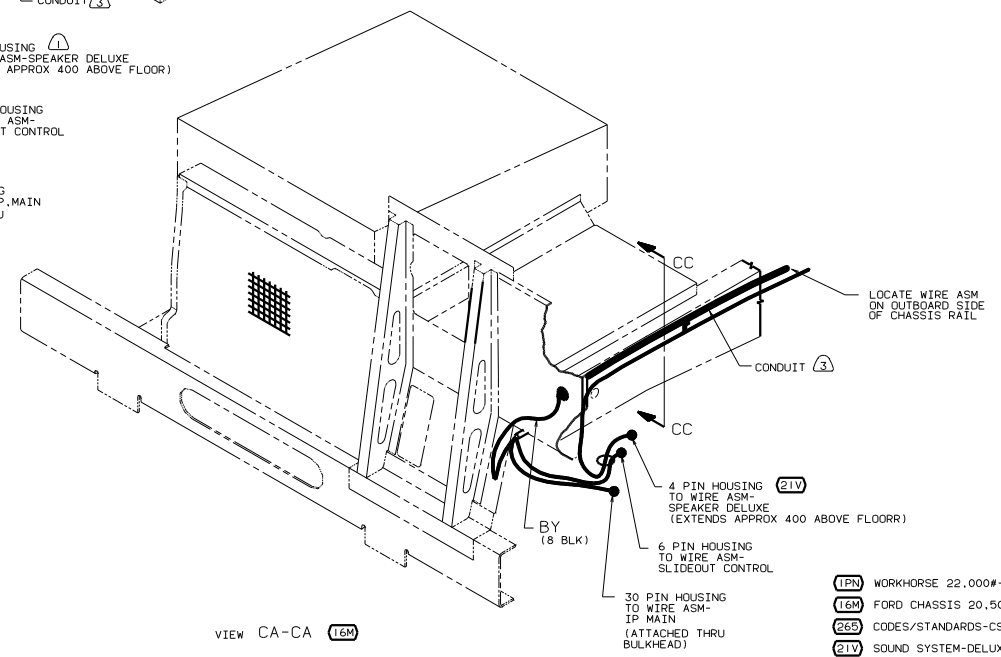
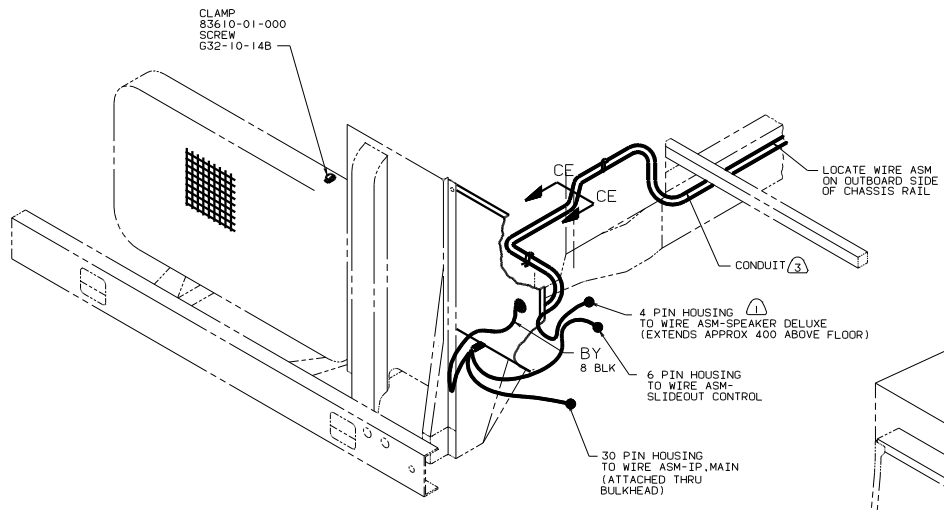
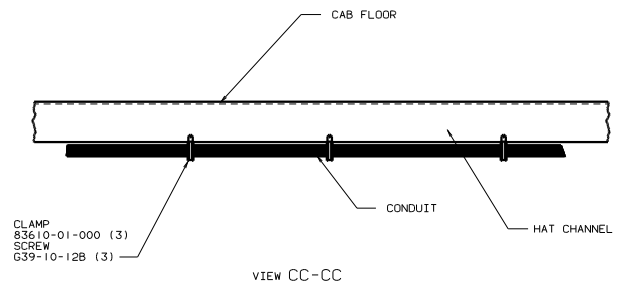
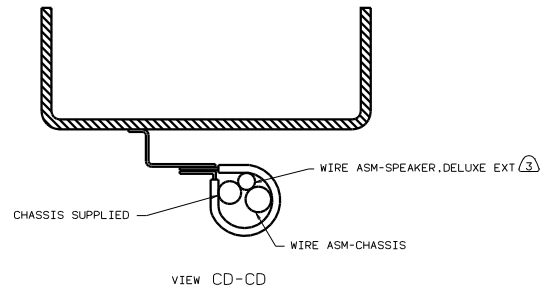
- 11 USE TWO EXTENSIONS WHEN CHASSIS IS STRECHED FROM 208" TO 228"
- 10 SUPPLIED WITH CHASSIS.
- 9 SEE WIRING INSTL-FRONT END FOR WIRING CONNECTIONS.
- 8 COVER WITH CONDUIT-41953-10-000 & 41953-11-000 AS REQUIRED.
- 7 DISCONNECT EXISTING CHASSIS WIRE ASM NEAR TRANSMISSION AND INSERT WIRE ASM-FD CHASSIS EXT.
- 6 ROUT WIRES & CABLE INSIDE CHASSIS RAIL AT THIS POINT AND TO THE REAR.
- 5 CLAMP 10497-03-000, SCREW G39-08-12B.
- 4 CLAMP 83609-01-000, SCREW G39-08-12B.
- 3 CLAMP 83610-01-000, SCREW G39-08-12B.
- 2 SECURE CONDUIT 41953-01-000, 41953-02-000 AND 41953-03-000 OVER ALL WIRES IN CONTACT WITH SHARP EDGES.
- 1 LEGEND: — WINNEBAGO, ..... CABLE, - - - - - CHASSIS SUPPLIED.

- 13 USE TWO NUTS HERE TO ACCOUNT FOR BATTERY HEIGHT DIFFERENCE.
- 14 ROUTE WIRES & CABLE OVER SPRING HANGER & ON TOP OF CHASSIS RAIL AT THIS POINT.
- 13 WITH SLIDEOUT ROOM USE CLAMP 83610-03-000 & G39-08-12B
- 12 TRIM CABLE TO 500MM, ADD TERMINALS 8348-01-000(2).
- 11 SECURE SO WIRES DO NOT CONTACT EXHAUST.
- 10 PLACE AROUND ENTIRE PERIMETER OF DOOR WITH SEAM AT TOP.
- 9 WIRES TO BE ROUTED ABOVE SUB-FLOOR TO FRONT SPEAKER.

- 52P GEN-5.5KW ONAN-GAS-MARO GOLD
- 14K GEN-7.0KW ONAN-GAS-MARO GOLD
- 1FN WORKHORSE 22,000#-19.5 TIRE
- 26S CODES/STANDARDS-CSA/CMVSS
- 21V SOUND SYSTEM-DELUXE
- 181 CODES STANDARDS/USA

FOR ELECTRICAL TORQUE SPECIFICATIONS SEE DWG NO. 128783-01-000

01 G37G 181 26S 21V  
 TITLE: WIRING INSTL-CHASSIS  
 SHEET 2 OF 5

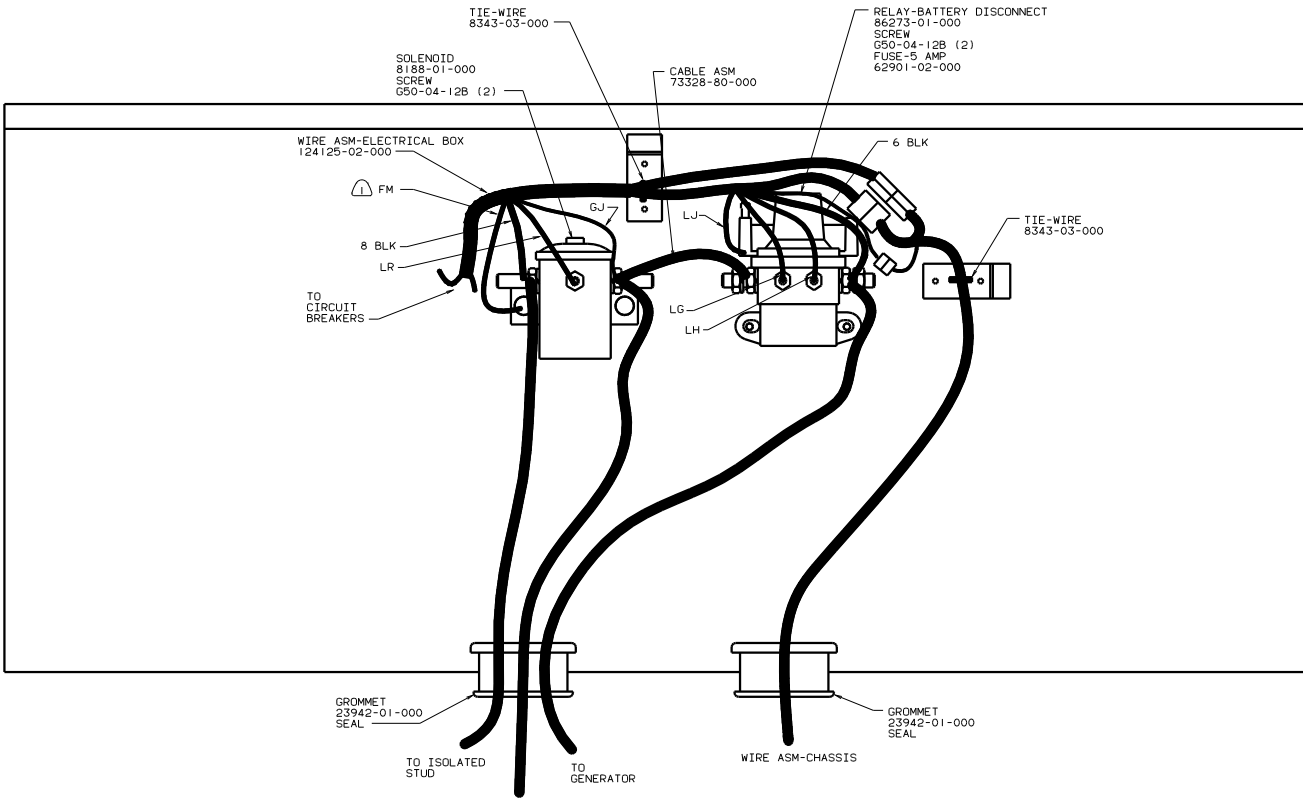


5. CONNECT CABLES TO COACH SIDE OF BATTERY DISCONNECT WHEN BATTERY DISCONNECT IS USED.
4. FOR ADDITIONAL INFORMATION SEE WIRING INSTALLATION FRONT END.
- (3) COVER WITH CONDUIT 41953-10-000 AND 41953-11-000 AS REQUIRED.
- (2) SUPPLIED WITH CHASSIS.
1. CUT OFF EXCESS END OF WIRE TIE.

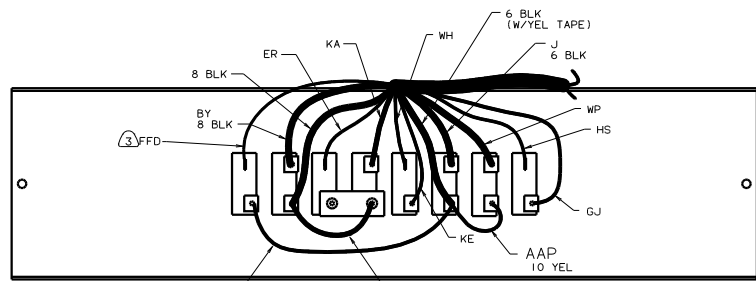
(1PM)	WORKHORSE 22,000#-19.5 TIRE
(16M)	FORD CHASSIS 20,500#/V10 ENG
(265)	CODES/STANDARDS-CSA/CMVSS
(21V)	SOUND SYSTEM-DELUXE
(1B1)	CODES STANDARDS/USA

FOR ELECTRICAL TORQUE SPECIFICATIONS SEE DWG NO. 128783-01-000

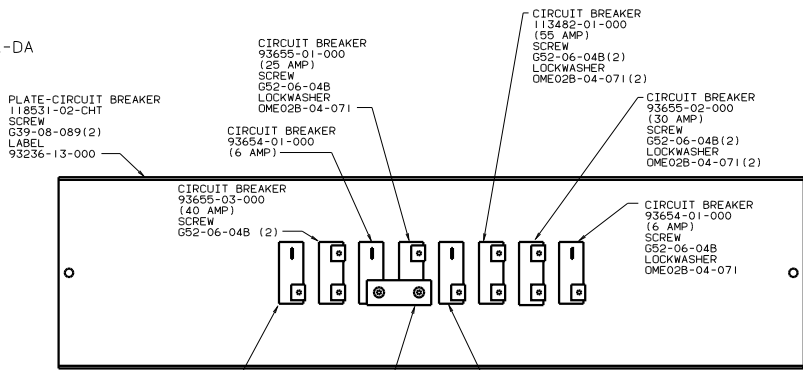
TITLE	WIRING INSTL-CHASSIS
NO. OF SCALE EDITS	1
SHEET	3 OF 5
REV	1
DWG NO.	135038



VIEW DA-DA



VIEW DB-DB (WIRING)



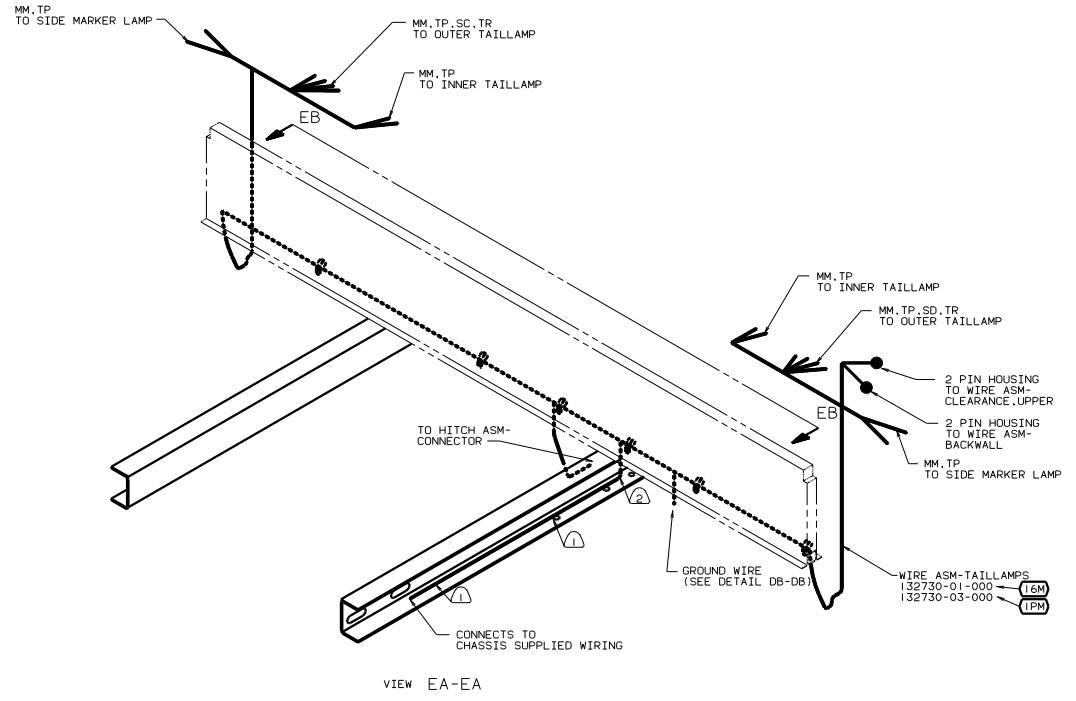
VIEW DB-DB (HARDWARE)

- NOTES:
- ③ TIE BACK TO MAIN ASM WITHOUT 52N.
  - ② USE WITHOUT 52N.
  - ① SECURE WITH SOLENOID MOUNTING SCREW.

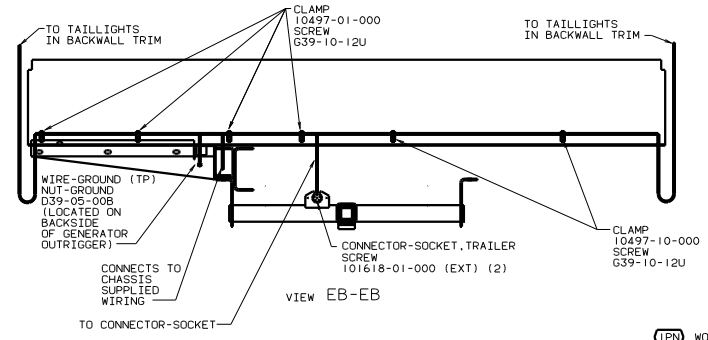
FOR ELECTRICAL  
TORQUE  
SPECIFICATIONS  
SEE DWG NO.  
128783-01-000

52N AWNING - PATIO, ELECTRIC  
265 CODES/STANDARDS-CSA/CMVSS  
1B1 CODES STANDARDS-USA  
01 G37G 1B1 265

TITLE: WIRING INSTL-CHASSIS  
SHEET 4 OF 5



VIEW EA-EA



VIEW EB-EB

- ② WIRE TO BE ROUTED ON BACK SIDE OF RISER.
- ⚠ WIRE TIE 8343-02. FASTEN TO FRAME AT LEAST ONCE EVERY 600MM.

NOTES:

- 1PN WORKHORSE 22,000#-19.5 TIRE
- 16M FORD CHASSIS 20,500#/V10 ENG

FOR ELECTRICAL TORQUE SPECIFICATIONS SEE DWG NO. 128783-01-000

TITLE: WIRING INSTL-CHASSIS		01 G37G	
NO. OF SHEETS	TOTAL SHEETS	REV.	DATE
5	5	1E	135038