



**DANGER**

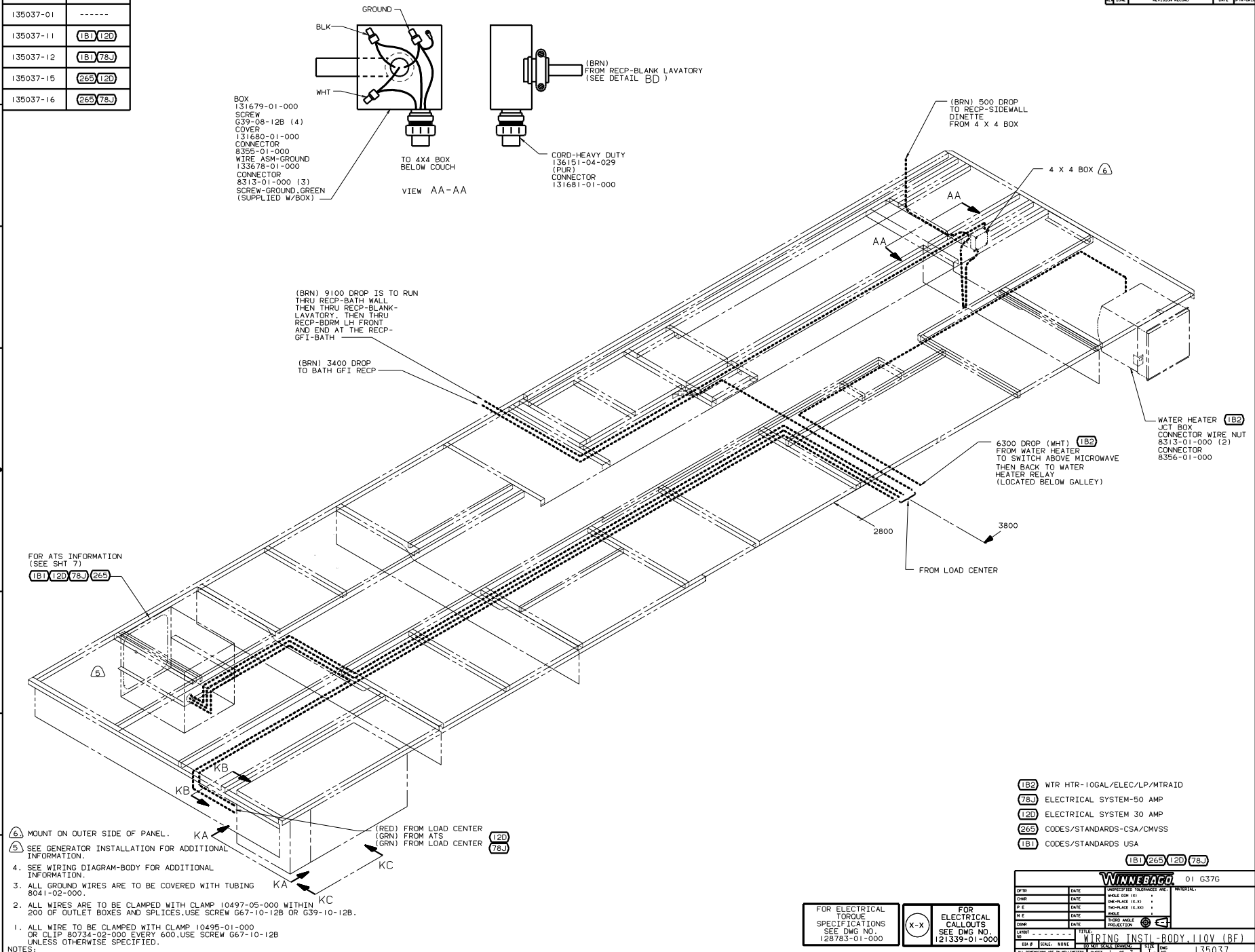
**Danger of electrical shock, burns or death.** Always remove all power sources before attempting any repair, service or diagnostic work. Power can be present from shore power, generator, inverter or battery. All power sources must be disabled and secured before performing any service.



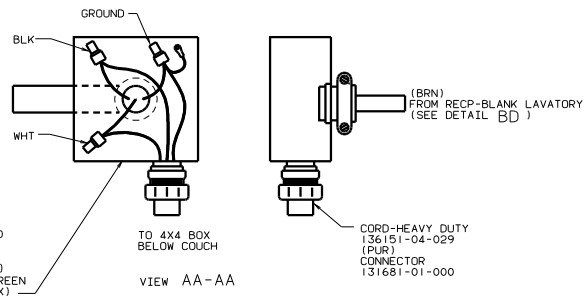
**CAUTION**

If you lack the skills, tools or equipment to perform diagnostic or repair work leave such work to an authorized Winnebago Industries dealer or other qualified shop.

DWG NO.	FEATURE
135037-01	-----
135037-11	(1B1) (12D)
135037-12	(1B1) (78J)
135037-15	(265) (12D)
135037-16	(265) (78J)



- BOX  
131679-01-000  
SCREW  
G39-08-12B (4)  
COVER  
131680-01-000  
CONNECTOR  
8355-01-000  
WIRE ASM-GROUND  
133578-01-000  
CONNECTOR  
8313-01-000 (3)  
SCREW-GROUND, GREEN  
(SUPPLIED W/BOX)



(BRN) 9100 DROP IS TO RUN THRU RECP-BATH WALL THEN THRU RECP-BLANK-LAVATORY. THEN THRU RECP-BDRM LH FRONT AND END AT THE RECP-GFI-BATH

(BRN) 3400 DROP TO BATH GFI RECP

(BRN) 500 DROP TO RECP-SIDEWALL DINETTE FROM 4 X 4 BOX

WATER HEATER (1B2)  
JCT BOX  
CONNECTOR WIRE NUT  
8313-01-000 (2)  
CONNECTOR  
8356-01-000

6300 DROP (WHT) (1B2) FROM WATER HEATER TO SWITCH ABOVE MICROWAVE THEN BACK TO WATER HEATER RELAY (LOCATED BELOW GALLEY)

FOR ATS INFORMATION (SEE SHT 7)  
(1B1) (12D) (78J) (265)

- (6) MOUNT ON OUTER SIDE OF PANEL.
- (5) SEE GENERATOR INSTALLATION FOR ADDITIONAL INFORMATION.
4. SEE WIRING DIAGRAM-BODY FOR ADDITIONAL INFORMATION.
3. ALL GROUND WIRES ARE TO BE COVERED WITH TUBING 8041-02-000.
2. ALL WIRES ARE TO BE CLAMPED WITH CLAMP 10495-05-000 WITHIN 200 OF OUTLET BOXES AND SPLICES. USE SCREW G67-10-12B OR G39-10-12B.
1. ALL WIRE TO BE CLAMPED WITH CLAMP 10495-01-000 OR CLIP 80734-02-000 EVERY 600. USE SCREW G67-10-12B UNLESS OTHERWISE SPECIFIED.
- NOTES:

(RED) FROM LOAD CENTER  
(GRN) FROM ATS  
(GRN) FROM LOAD CENTER  
(12D)  
(78J)

- (1B2) WTR HTR-10GAL/ELEC/LP/MTR/IDA  
(78J) ELECTRICAL SYSTEM-50 AMP  
(12D) ELECTRICAL SYSTEM 30 AMP  
(265) CODES/STANDARDS-CSA/CMVSS  
(1B1) CODES/STANDARDS USA

(1B1) (265) (12D) (78J)

FOR ELECTRICAL TORQUE SPECIFICATIONS SEE DWG NO. 128763-01-000

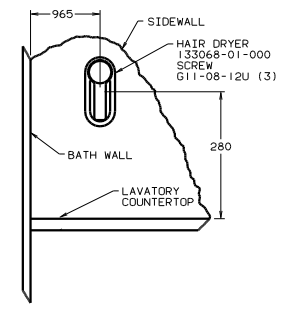
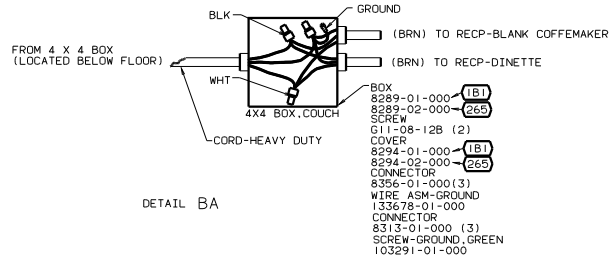
(X-X)

FOR ELECTRICAL CALLOUTS SEE DWG NO. 121339-01-000

WINNEBAGO 01 G37G

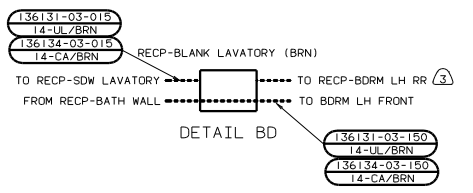
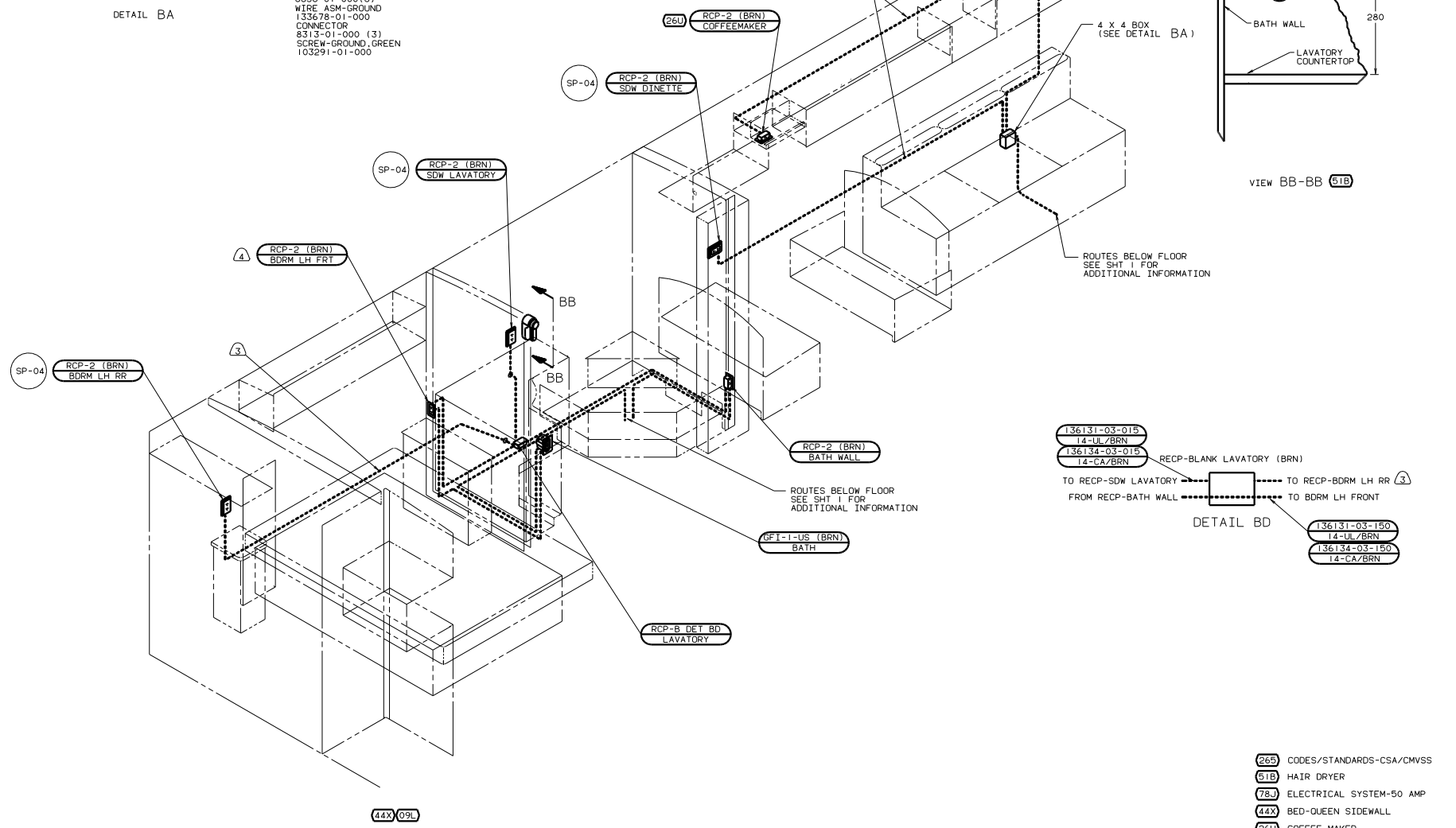
DATE	DESCRIPTION	BY	CHKD

135037



DETAIL BA

VIEW BB-BB (51B)



DETAIL BD

- NOTES:
1. ALL WIRE ROUTED ABOVE FLOOR TO BE CLAMPED WITH CLAMP 10495 AND SCREW 067-10-12B OR TIED WITH WIRE TIE 8343 AS REQUIRED AT LEAST EVERY 700MM OR AS OTHERWISE SPECIFIED.
  2. ALL WIRES ARE TO BE CLAMPED WITH CLAMP 10495 WITHIN 200 OF OUTLET BOXES, USE SCREW 067-10-12B.
  3. WIRE IN SIDEWALL.
  4. SEE WIRING INSTL-BODY.12V FOR ADDITIONAL INFORMATION.

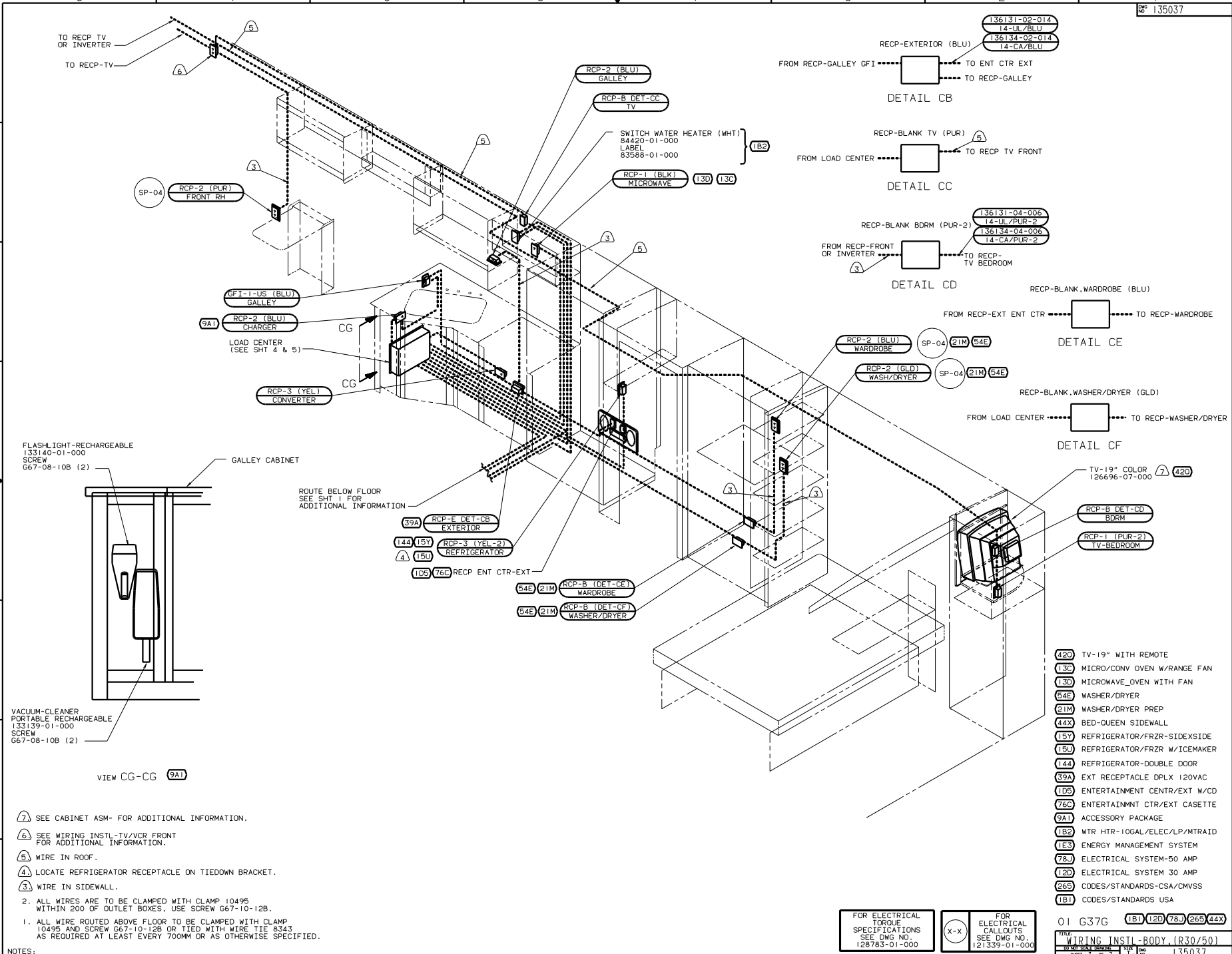
- (265) CODES/STANDARDS-CSA/CMVSS
- (51B) HAIR DRYER
- (78J) ELECTRICAL SYSTEM-50 AMP
- (44X) BED-QUEEN SIDEWALL
- (26U) COFFEE MAKER
- (12D) ELECTRICAL SYSTEM 30 AMP
- (1E3) ENERGY MANAGEMENT SYSTEM
- (1B1) CODES/STANDARDS USA
- (09L) SLIDEOUT ROOM FRONT LEFT

FOR ELECTRICAL TORQUE SPECIFICATIONS SEE DWG NO. 128783-01-000

FOR ELECTRICAL CALLOUTS SEE DWG NO. 121339-01-000

01 G37G (1B1)(12D)(78J)(265)

WIRING INSTL-BODY (L30/50)  
 SHEET 2 OF 7



FLASHLIGHT-RECHARGEABLE  
133140-01-000  
SCREW  
G67-08-10B (2)

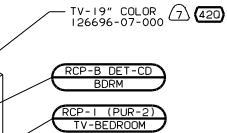
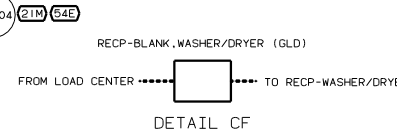
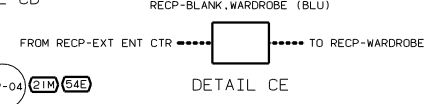
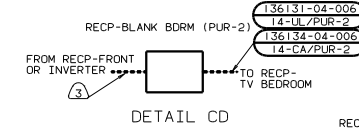
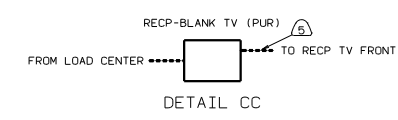
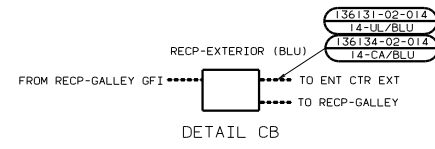
VACUUM-CLEANER  
PORTABLE RECHARGEABLE  
133139-01-000  
SCREW  
G67-08-10B (2)

VIEW CG-CG (9A1)

ROUTE BELOW FLOOR  
SEE SHT 1 FOR  
ADDITIONAL INFORMATION

- (7) SEE CABINET ASM- FOR ADDITIONAL INFORMATION.
  - (6) SEE WIRING INSTL-TV/VCR FRONT FOR ADDITIONAL INFORMATION.
  - (5) WIRE IN ROOF.
  - (4) LOCATE REFRIGERATOR RECEPTACLE ON TIEDOWN BRACKET.
  - (3) WIRE IN SIDEWALL.
2. ALL WIRES ARE TO BE CLAMPED WITH CLAMP 10495 WITHIN 200 OF OUTLET BOXES. USE SCREW G67-10-12B.
1. ALL WIRE ROUTED ABOVE FLOOR TO BE CLAMPED WITH CLAMP 10495 AND SCREW G67-10-12B OR TIED WITH WIRE TIE 8343 AS REQUIRED AT LEAST EVERY 700MM OR AS OTHERWISE SPECIFIED.

NOTES:



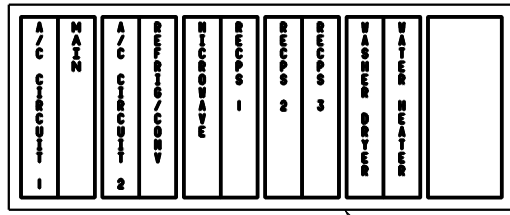
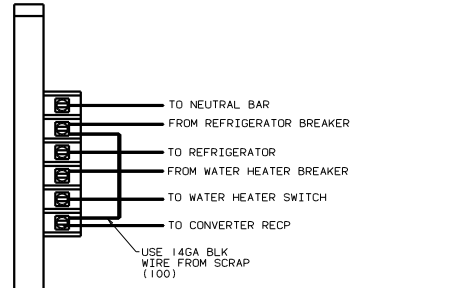
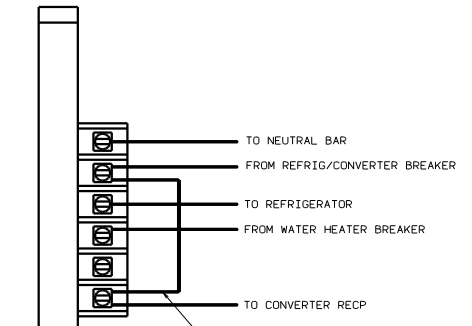
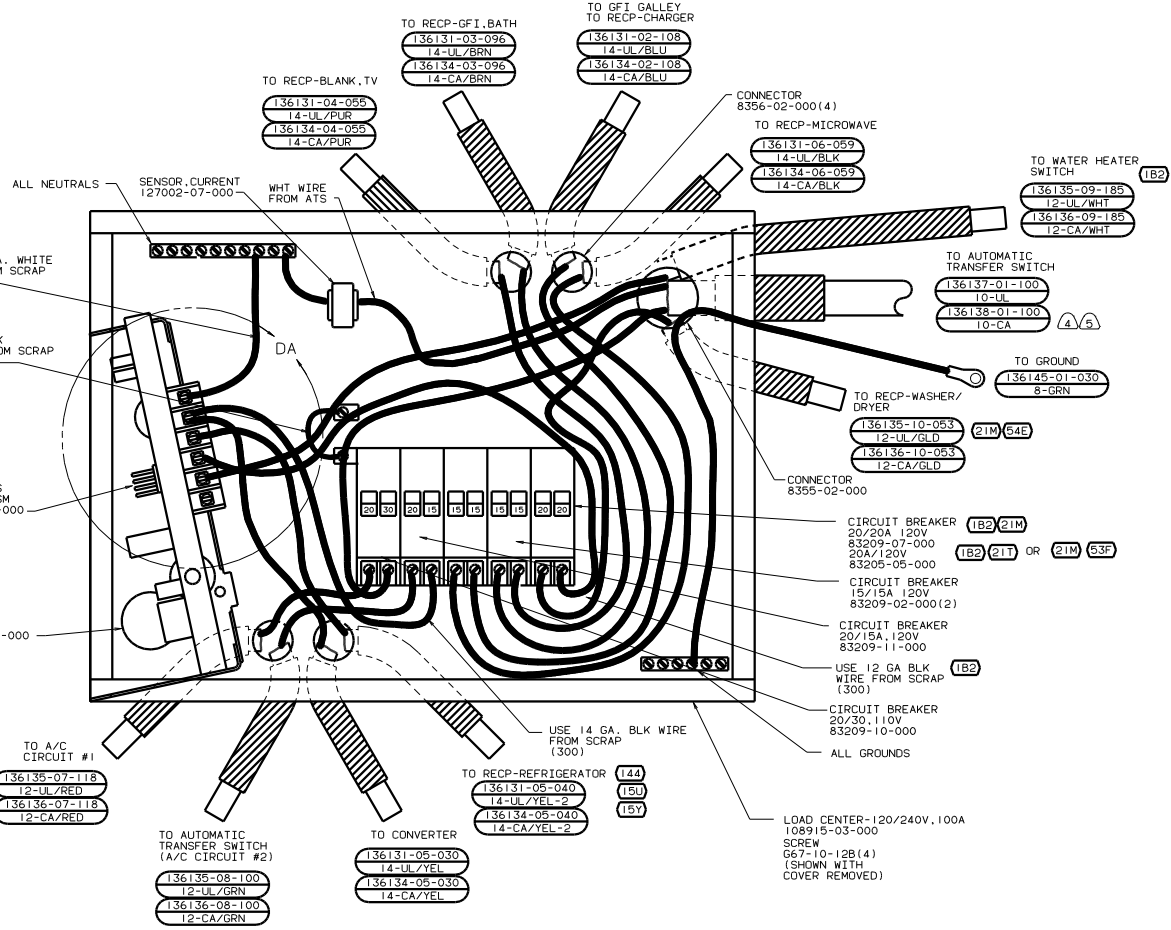
- (420) TV-19" WITH REMOTE
- (13C) MICRO/CONV OVEN W/RANGE FAN
- (13D) MICROWAVE\_OVEN WITH FAN
- (64E) WASHER/DRYER
- (21M) WASHER/DRYER PREP
- (44X) BED-QUEEN SIDEWALL
- (15Y) REFRIGERATOR/FRZR-SIDEXSIDE
- (15U) REFRIGERATOR/FRZR W/ICEMAKER
- (144) REFRIGERATOR-DOUBLE DOOR
- (39A) EXT RECEPTACLE DPLX 120VAC
- (1D5) ENTERTAINMENT CTR/EXT W/CD
- (76C) ENTERTAINMENT CTR/EXT CASSETTE
- (9A1) ACCESSORY PACKAGE
- (1B2) WTR HTR-10GAL/ELEC/LP/MTR/AID
- (1E3) ENERGY MANAGEMENT SYSTEM
- (78J) ELECTRICAL SYSTEM-50 AMP
- (12D) ELECTRICAL SYSTEM 30 AMP
- (265) CODES/STANDARDS-CSA/CMVSS
- (1B1) CODES/STANDARDS USA

FOR ELECTRICAL TORQUE SPECIFICATIONS SEE DWG NO. 128783-01-000	(X-X)	FOR ELECTRICAL CALLOUTS SEE DWG NO. 121339-01-000
--	-------	---

01 G37G (1B1) (12D) (78J) (265) (44X)

WIRING INSTL-BODY (R30/50)

135037



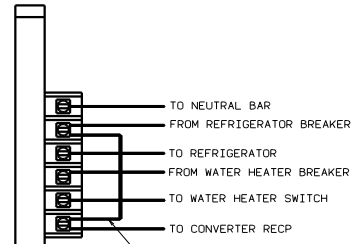
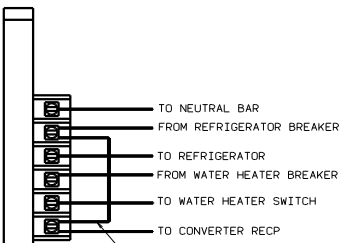
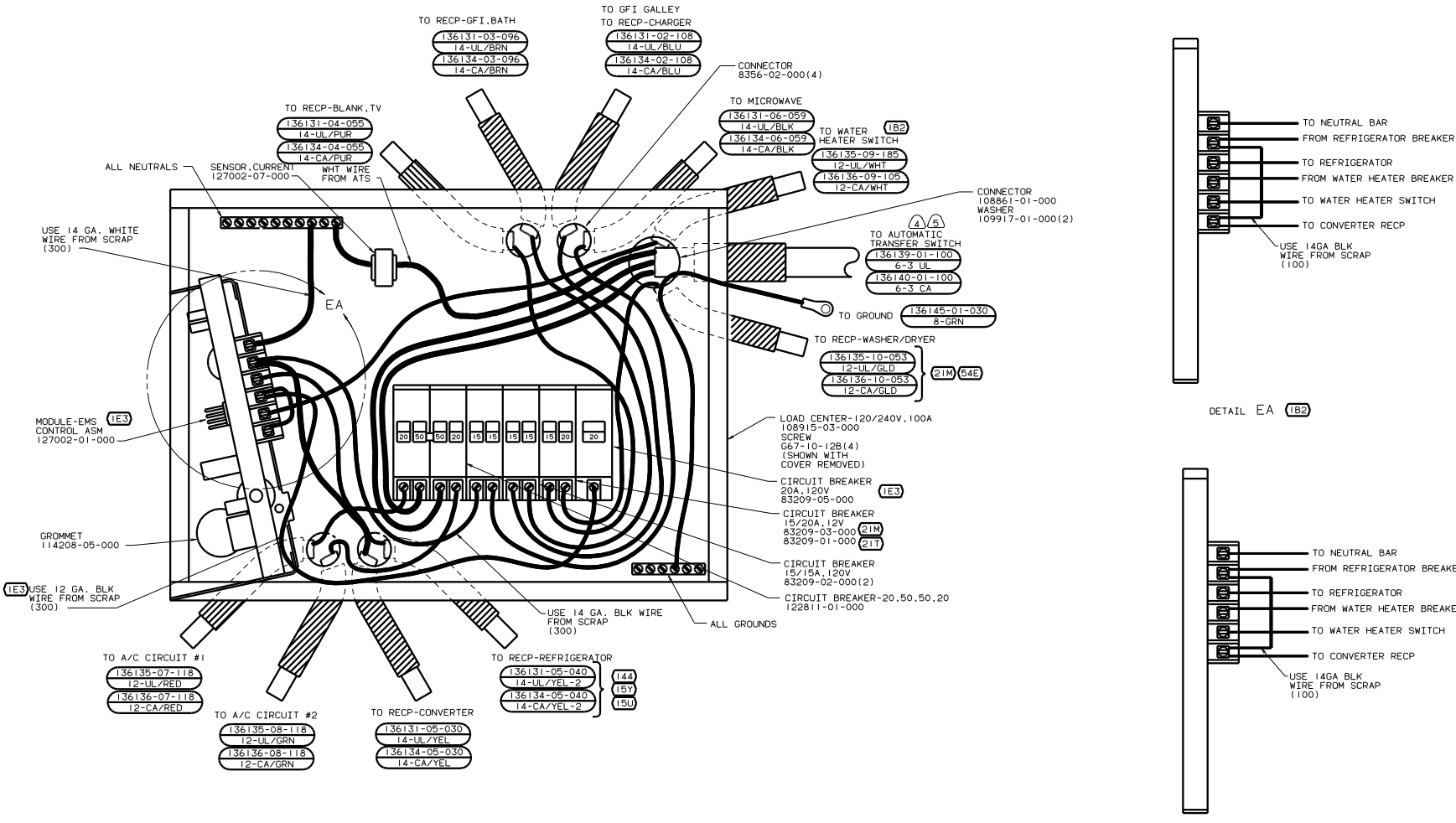
- (B) WIRE TIE THE FOLLOWING WIRES FOR THE FIRST 2000MM. RED, GREEN, PURPLE, BROWN TO 22 BLACK, YELLOW, YELLOW-2, WHITE, BLUE, LEAVE A 1700 LOOP IN BLUE WIRE BEHIND LOAD CENTER.
- (4) WIRE MUST BE 600 LONG INSIDE BOX, ALL OTHERS TO BE 300.
3. ALL CABLES SHALL BE COVERED WITH CONDUIT-CONVOLUTE, SLIT 41953-01-000 UNLESS OTHERWISE SPECIFIED. 600 LESS THAN CABLE LENGTH.
2. ATTACH WIRES TO BACKSIDE OF LOAD CENTER, USE EXISTING HOLES AND TIE-WIRE 116673-01-000.
1. ALL GROUND WIRES TO BE COVERED WITH TUBING 8041-02-000.

INSTALL LABEL ON FRONT PANEL BELOW BREAKERS BETWEEN MOUNTING HOLES

- (265) CODES/STANDARDS-CSA/CMVSS
- (54E) WASHER/DRYER
- (53F) WATER HEATER-ELEC. IGNITION
- (21T) WASHER/DRYER-WITHOUT
- (21M) WASHER/DRYER PREP
- (15Y) REFRIGERATOR/FRZR-SIDEXSIDE
- (15U) REFRIGERATOR/FRZR W/ICEMAKER
- (144) REFRIGERATOR-DOUBLE DOOR
- (1B2) WTR HTR-10GAL/ELEC/LP/MTR/ID
- (IE3) ENERGY MANAGEMENT SYSTEM
- (120) ELECTRICAL SYSTEM 30 AMP
- (1B1) CODES/STANDARDS USA

FOR ELECTRICAL TORQUE SPECIFICATIONS SEE DWG NO. 128783-01-000

FOR ELECTRICAL CALLOUTS SEE DWG NO. 121339-01-000



A/C CIRCUIT #1	WATER	WATER	A/C CIRCUIT #2	REFRIG/CONV	MICROWAVE	RECPS 1	RECPS 2	RECPS 3	WASHER/DRYER	WATER HEATER
----------------	-------	-------	----------------	-------------	-----------	---------	---------	---------	--------------	--------------

LABEL 95721-33-000

INSTALL LABEL ON FRONT PANEL BELOW BREAKERS BETWEEN MOUNTING HOLES

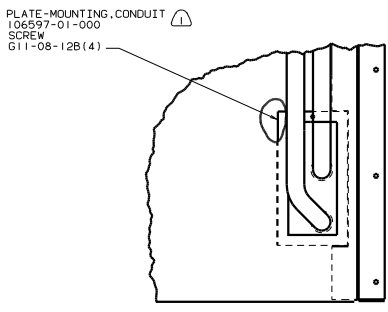
5. WIRE TIE THE FOLLOWING WIRES FOR THE FIRST 2000 MM RED, GREEN PURPLE, BROWN 6-3 BLACK, YELLOW, YELLOW-2, WHITE, BLUE. (LEAVE A 1700 LOOP IN BLUE WIRE BEHIND LOAD CENTER.)
4. WIRE MUST BE 600 LONG INSIDE BOX, ALL OTHERS TO BE 300.
3. ALL CABLES SHALL BE COVERED WITH CONDUIT-CONVOLUTE, SLIT 41953-01-000 UNLESS OTHERWISE SPECIFIED. 600 LESS THAN CABLE LENGTH.
2. ATTACH WIRES TO BACKSIDE OF LOAD CENTER. USE EXISTING HOLES AND TIE-WIRE 116673-01-000.
1. ALL GROUND WIRES TO BE COVERED WITH TUBING 8041-02-000.

- 265 CODES/STANDARDS-CSA/CMVSS
- 54E WASHER/DRYER
- 211 WASHER/DRYER-WITHOUT
- 21M WASHER/DRYER PREP
- 78J ELECTRICAL SYSTEM-50 AMP
- 15Y REFRIGERATOR/FRZR-SIDEXSIDE
- 15U REFRIGERATOR/FRZR W/ICEMAKER
- 144 REFRIGERATOR-DOUBLE DOOR
- 1E3 ENERGY MANAGEMENT SYSTEM
- 1B2 WTR HTR-10GAL/ELEC/LP/MTRAIID
- 1B1 CODES/STANDARDS USA

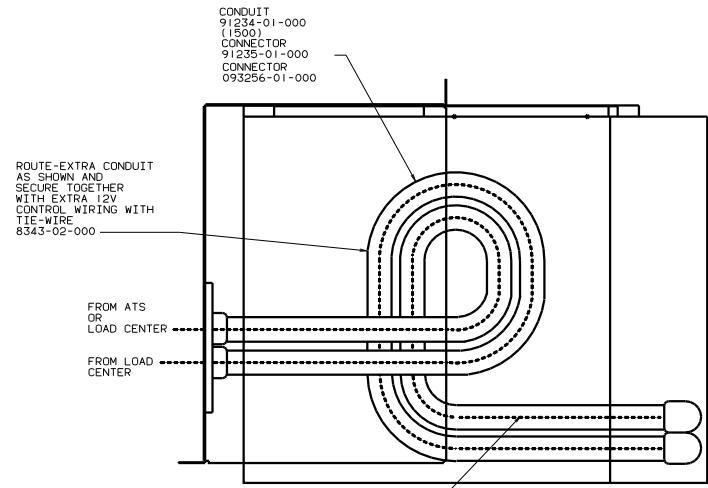
FOR ELECTRICAL TORQUE SPECIFICATIONS SEE DWG NO. 128783-01-000

FOR ELECTRICAL CALLOUTS SEE DWG NO. 121339-01-000

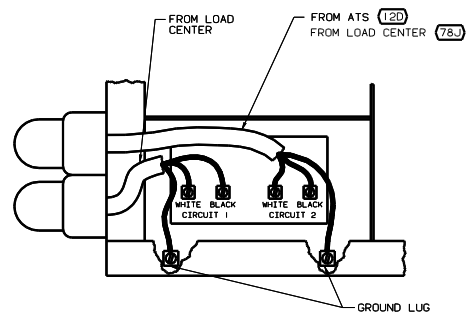
01 G37G (1B1) (78J) (265)  
 WTRING INSTL-BODY.110V(50LC)  
 135037



VIEW KB-KB



VIEW KA-KA



VIEW KC-KC

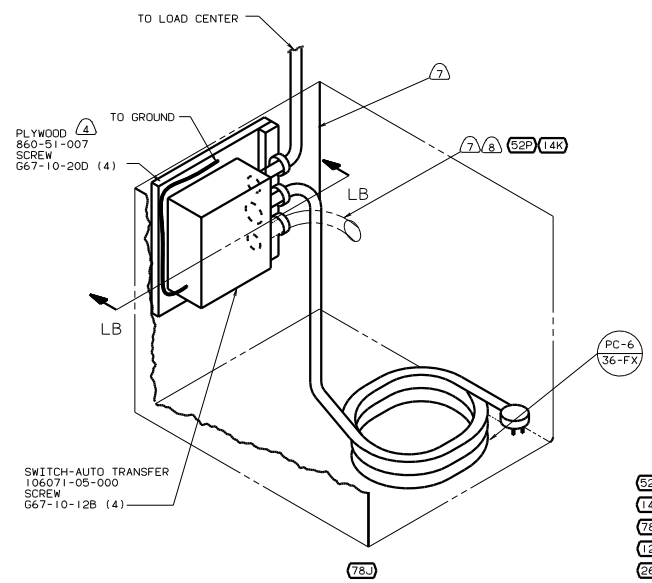
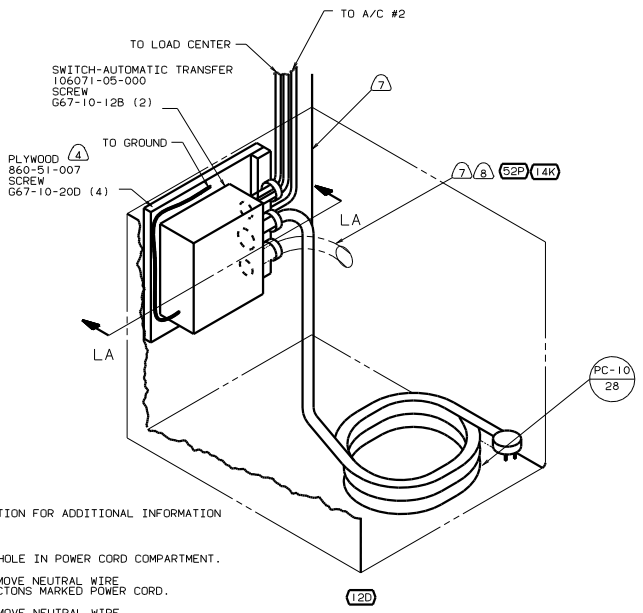
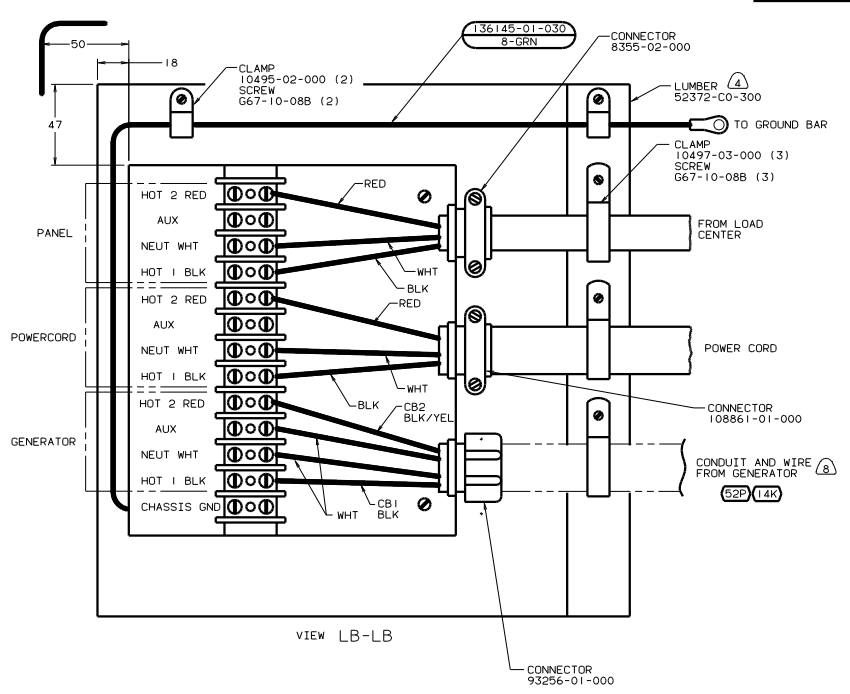
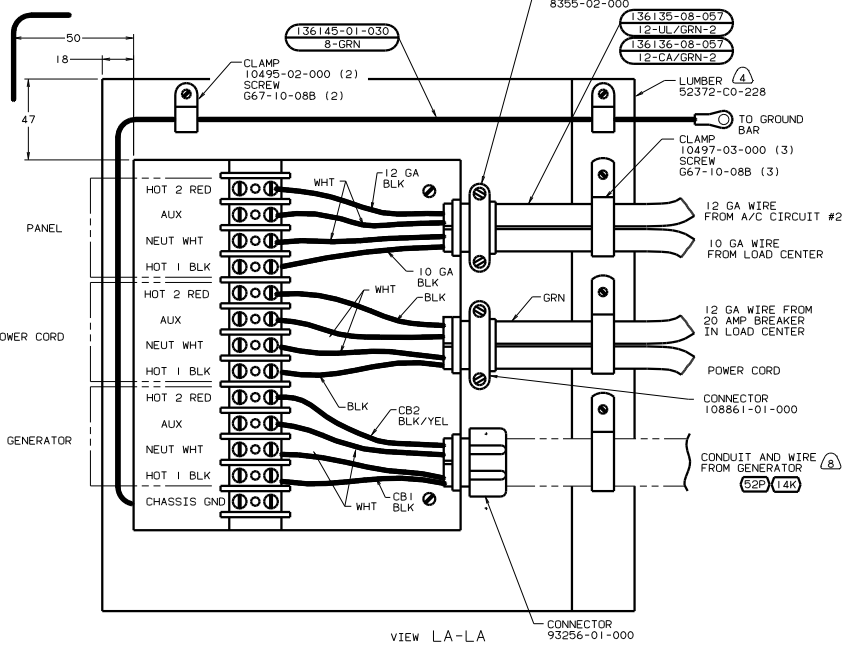
CONDUIT  
91234-01-000  
(1500)  
CONNECTOR  
91235-01-000  
CONNECTOR  
093256-01-000

SEAL EDGES.

- (78) ELECTRICAL SYSTEM-50 AMP
- (120) ELECTRICAL SYSTEM 30 AMP
- (265) CODES/STANDARDS-CSA/CMVSS
- (181) CODES/STANDARDS USA

O1 G37G (181) (265)

WIRING INSTL - BODY, 110V(C-A/C)	
DATE SCALE DEDUCED	FIG. NO.
SHEET 6 OF 7	135037



- (9) SEE GENERATOR INSTALLATION FOR ADDITIONAL INFORMATION
  - (8) WITHOUT (52P) OR (14K).
  - (7) WIRES TO PASS THROUGH HOLE IN POWER CORD COMPARTMENT.
  - (6) FOR THIS CONNECTION REMOVE NEUTRAL WIRE MARKED BLUE FROM CONNECTIONS MARKED POWER CORD.
  - (5) FOR THIS CONNECTION REMOVE NEUTRAL WIRE MARKED BLUE FROM CONNECTIONS MARKED PANEL.
  - (4) PAINT EXPOSED SURFACES BLACK WITH 106112-01-000
  - (3) ALL 100V STRANDED WIRE W/O TERMINALS TO BE STRIPPED 10MM AND SOLDER DIPPED.
  - (2) GROUND WIRES NOT SHOWN FOR CLARITY.
1. ALL WIRES TO BE CLAMPED WITH IN 200 OF BOX.

- (52P) GEN-5.5KW ONAN-GAS-MARO GOLD
- (14K) GEN-7.0KW ONAN-GAS-MARO GOLD
- (78J) ELECTRICAL SYSTEM-50 AMP
- (12D) ELECTRICAL SYSTEM 30 AMP
- (265) CODES/STANDARDS-CSA/CMVSS
- (1B1) CODES/STANDARDS USA