



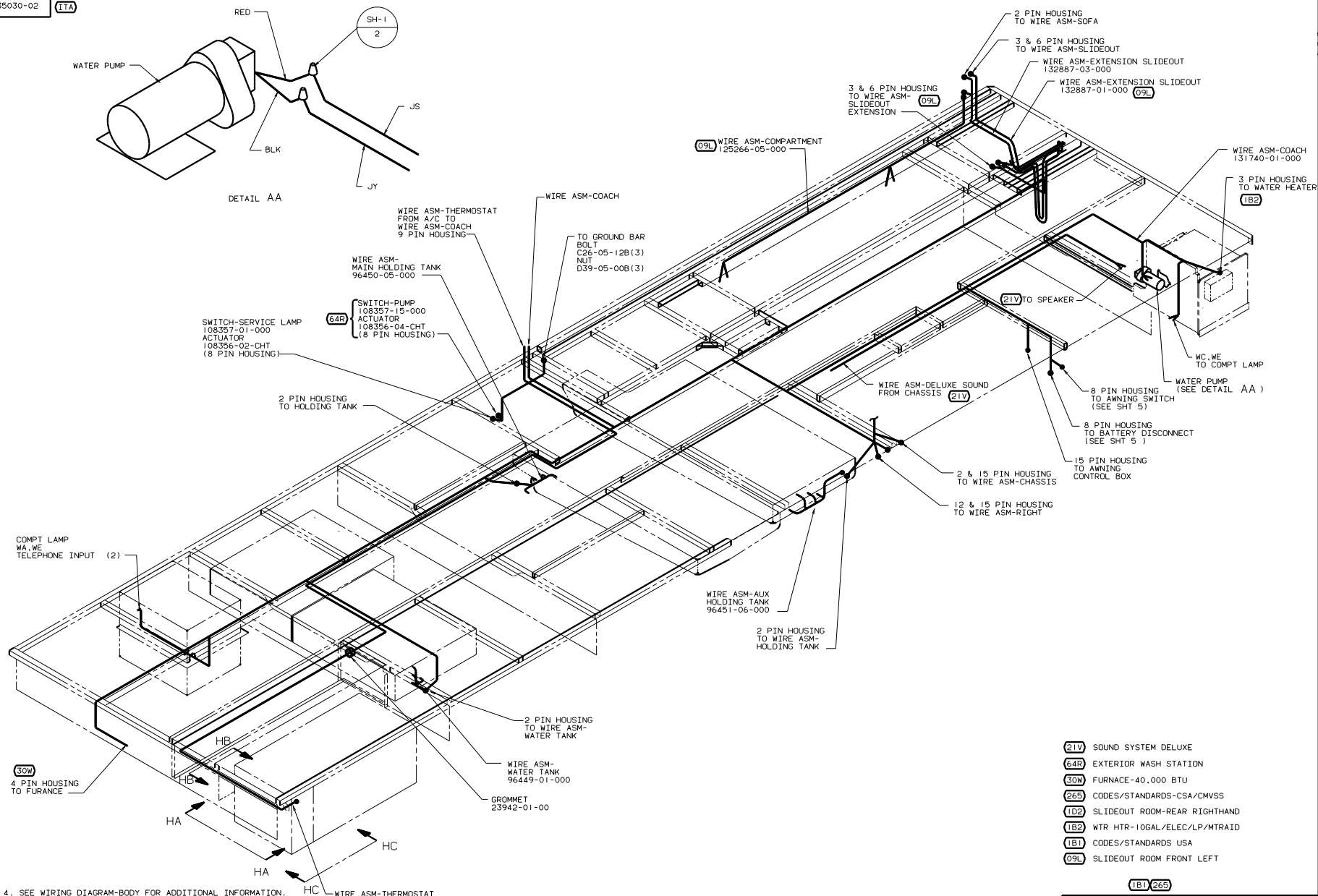
**DANGER**

**Danger of electrical shock, burns or death.** Always remove all power sources before attempting any repair, service or diagnostic work. Power can be present from shore power, generator, inverter or battery. All power sources must be disabled and secured before performing any service.



**CAUTION**

If you lack the skills, tools or equipment to perform diagnostic or repair work leave such work to an authorized Winnebago Industries dealer or other qualified shop.



4. SEE WIRING DIAGRAM-BODY FOR ADDITIONAL INFORMATION.
3. WIRES THAT REST ON WIRE TRAYS ARE TO BE TIED DOWN WITH WIRE TIE 8343-02-000
2. CLAMP TO FLOOR SUPPORT TUBES AS NECESSARY WITH CLAMP 10497-01-000
1. ALL WIRE TO BE CLAMPED WITH CLAMP 10495-01-000 OR CLIP 80734-02-000 EVERY 600. USE SCREW G67-10-12B UNLESS OTHERWISE SPECIFIED.

- (21V) SOUND SYSTEM DELUXE
- (64R) EXTERIOR WASH STATION
- (30W) FURNACE-40,000 BTU
- (265) CODES/STANDARDS-CSA/CMVSS
- (1B2) SLIDEOUT ROOM-REAR RIGHTHAND
- (1B2) WTR HTR-10GAL/ELEC/LP/MTRAIID
- (1B1) CODES/STANDARDS USA
- (09L) SLIDEOUT ROOM FRONT LEFT

(1B1) (265)

FOR ELECTRICAL TORQUE SPECIFICATIONS SEE DWG NO. 128783-01-000

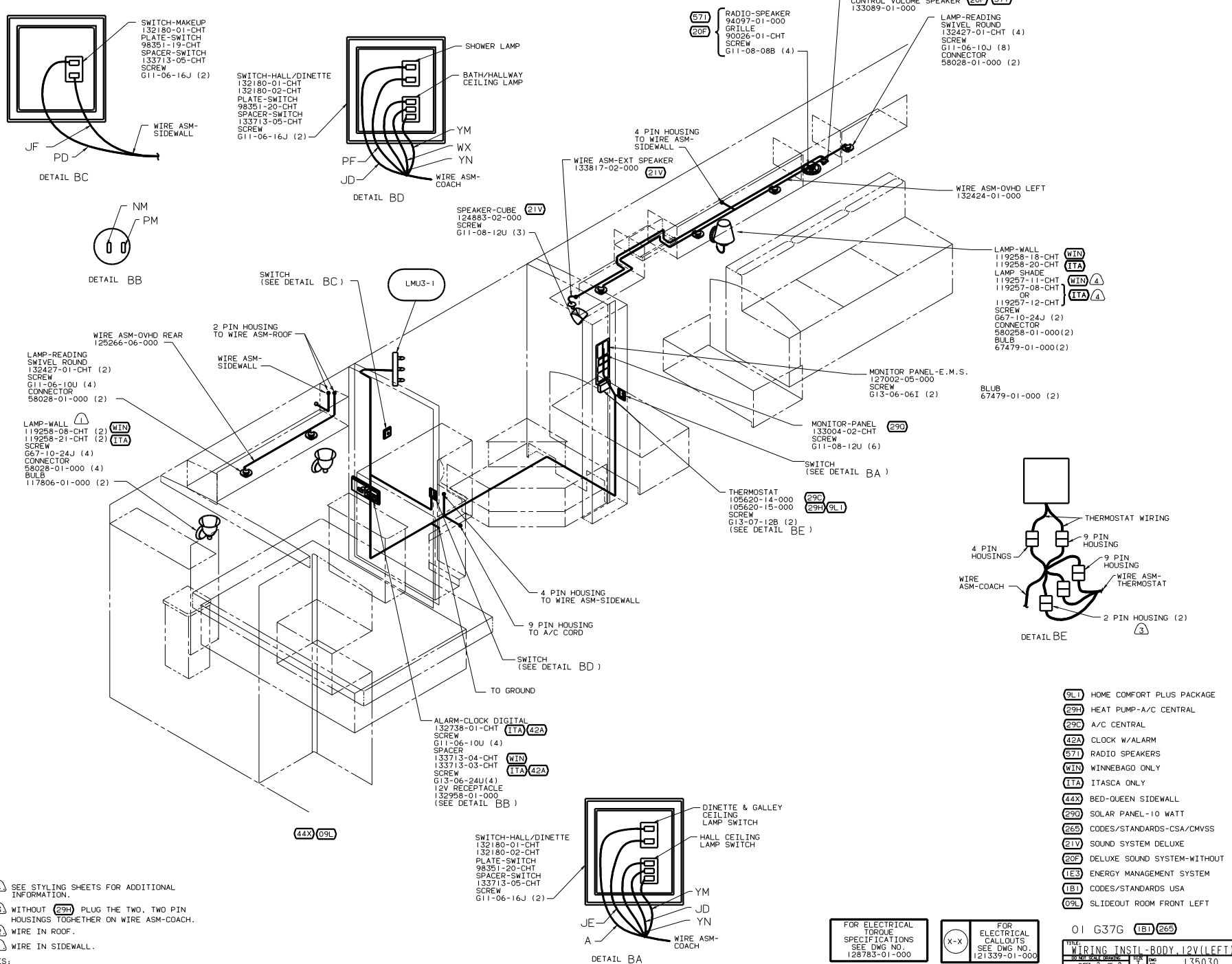
(X-X) FOR ELECTRICAL CALLOUTS SEE DWG NO. 128783-01-000

WINNEBAGO 01 G37G

OF IN	DATE	UNSPECIFIED TOLERANCES ARE:	MATERIAL
OMP	DATE	WHOLE DIM IN	
PIE	DATE	ONE-PLACE IN (.01)	
FLE	DATE	TWO-PLACE IN (.001)	
DATE			
DATE			
DATE			
DATE			
DATE			
DATE			

WIRING INSTL-BODY 12V (RF)

135030



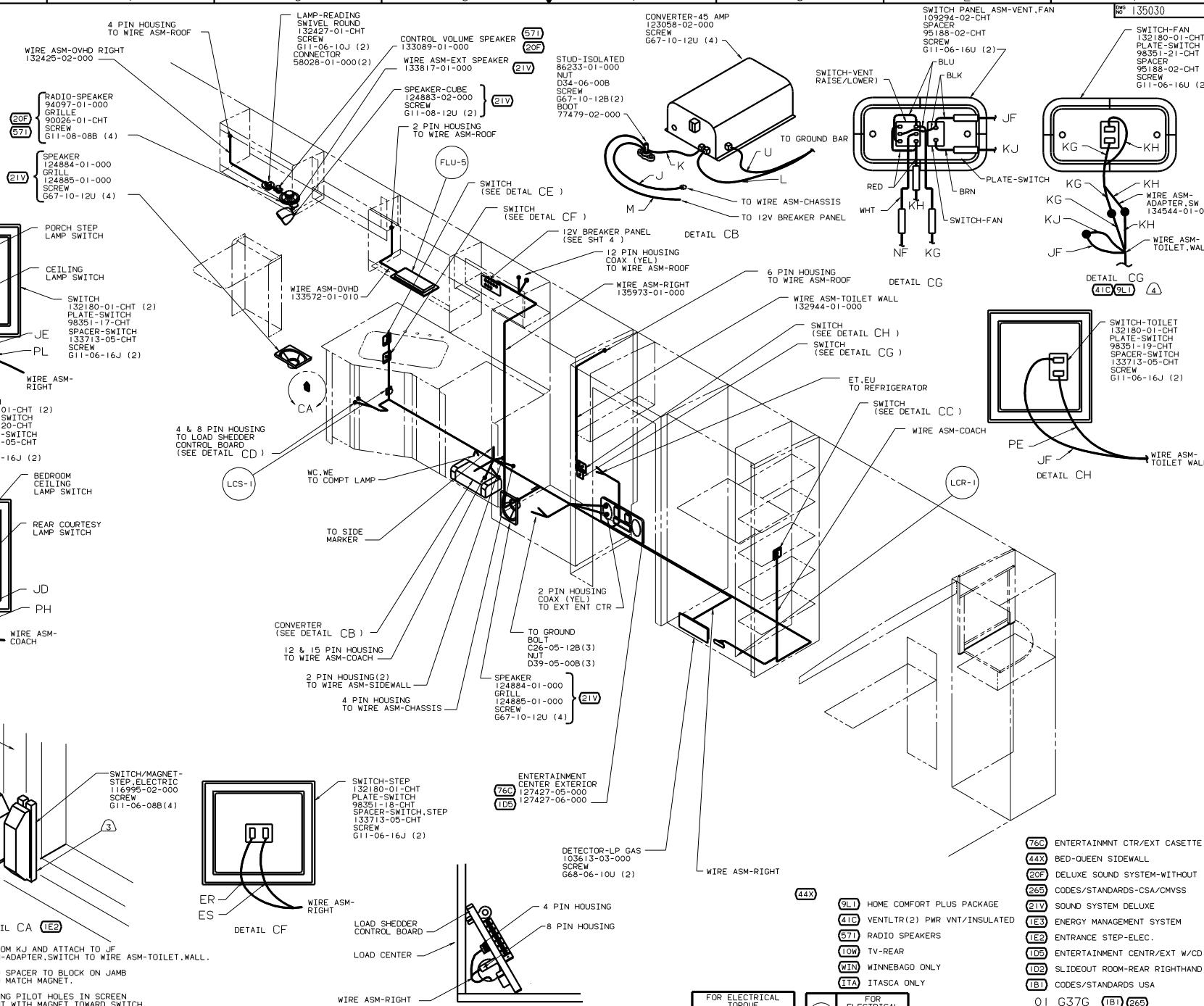
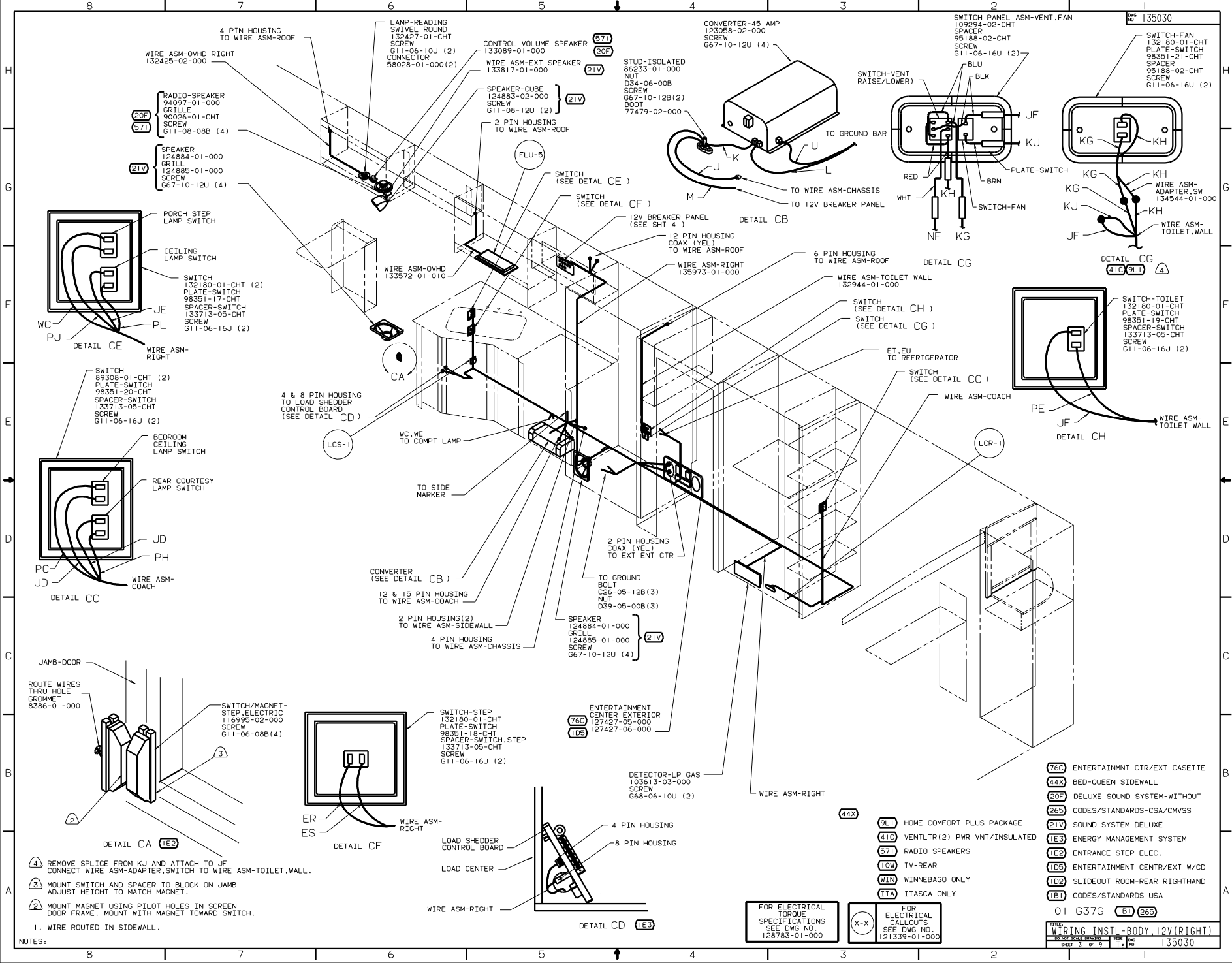
4 SEE STYLING SHEETS FOR ADDITIONAL INFORMATION.  
 3 WITHOUT (29H) PLUG THE TWO, TWO PIN HOUSINGS TOGETHER ON WIRE ASM-COACH.  
 2 WIRE IN ROOF.  
 1 WIRE IN SIDEWALL.

NOTES:

- (9L) HOME COMFORT PLUS PACKAGE
- (29H) HEAT PUMP-A/C CENTRAL
- (29C) A/C CENTRAL
- (42A) CLOCK W/ALARM
- (57I) RADIO SPEAKERS
- (WIN) WINNEBAGO ONLY
- (ITA) ITASCA ONLY
- (44X) BED-QUEEN SIDEWALL
- (29D) SOLAR PANEL-10 WATT
- (26S) CODES/STANDARDS-CSA/CMVSS
- (21V) SOUND SYSTEM DELUXE
- (20F) DELUXE SOUND SYSTEM-WITHOUT
- (18I) ENERGY MANAGEMENT SYSTEM
- (18I) CODES/STANDARDS USA
- (09L) SLIDEOUT ROOM FRONT LEFT

FOR ELECTRICAL TORQUE SPECIFICATIONS SEE DWG NO. 128783-01-000

FOR ELECTRICAL CALLOUTS SEE DWG NO. 121339-01-000



- 4 REMOVE SPLICE FROM KJ AND ATTACH TO JF CONNECT WIRE ASM-ADAPTER SWITCH TO WIRE ASM-TOILET WALL.
- 3 MOUNT SWITCH AND SPACER TO BLOCK ON JAMB ADJUST HEIGHT TO MATCH MAGNET.
- 2 MOUNT MAGNET USING PILOT HOLES IN SCREEN DOOR FRAME. MOUNT WITH MAGNET TOWARD SWITCH.
1. WIRE ROUTED IN SIDEWALL.

FOR ELECTRICAL TORQUE SPECIFICATIONS SEE DWG NO. 128783-01-000

X-X FOR ELECTRICAL CALLOUTS SEE DWG NO. 121339-01-000

- 76C ENTERTAINMENT CTR/EXT CASSETTE
- 44X BED-QUEEN SIDEWALL
- 20F DELUXE SOUND SYSTEM-WITHOUT CODES/STANDARDS-CSA/CMVSS
- 21V SOUND SYSTEM DELUXE
- 1E3 ENERGY MANAGEMENT SYSTEM
- 1E2 ENTRANCE STEP-ELEC.
- 1D5 ENTERTAINMENT CTR/EXT W/CD
- 1D2 SLIDEOUT ROOM-REAR RIGHTHAND
- 1B1 CODES/STANDARDS USA
- 9LU HOME COMFORT PLUS PACKAGE
- 41C VENTLTR(2) PWR VNT/INSULATED
- 571 RADIO SPEAKERS
- 10W TV-REAR
- 10M WINNEBAGO ONLY
- 11A ITASCA ONLY

01 G37G (1B) (265)

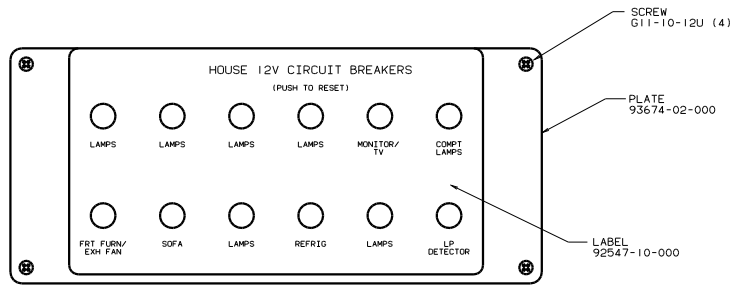
FILE: WIRING INSTL-BODY, 12V(RIGHT)

NO. 116

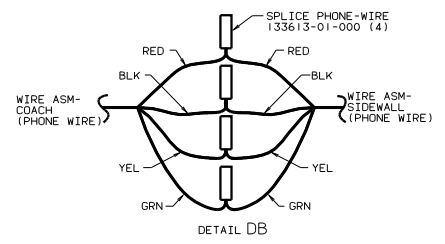
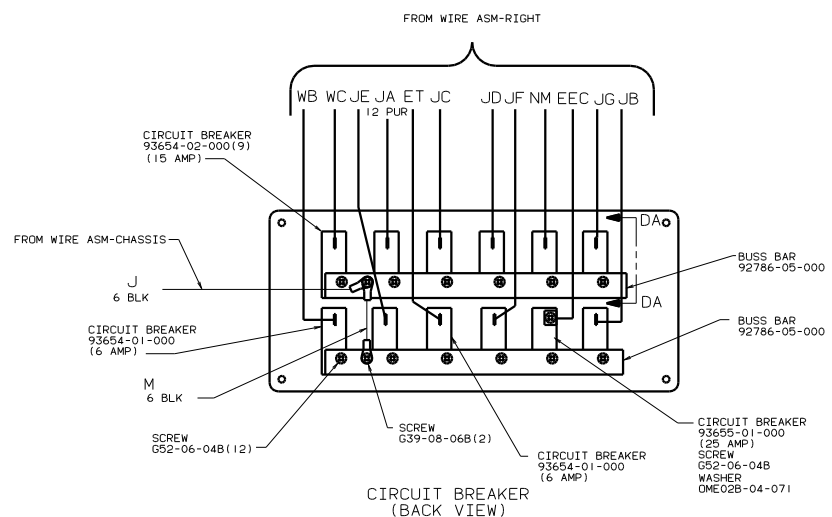
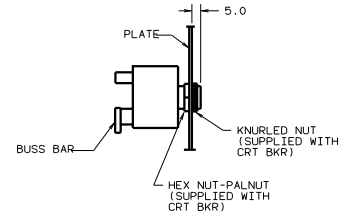
SCALE: AS SHOWN

SHEET 3 OF 9

DATE: 135030



CIRCUIT BREAKER (FRONT VIEW)

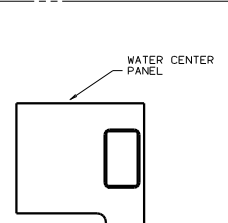
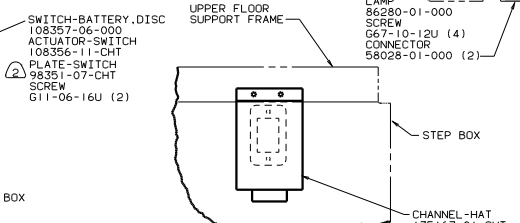
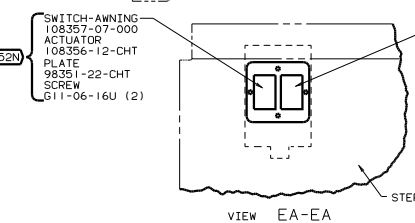
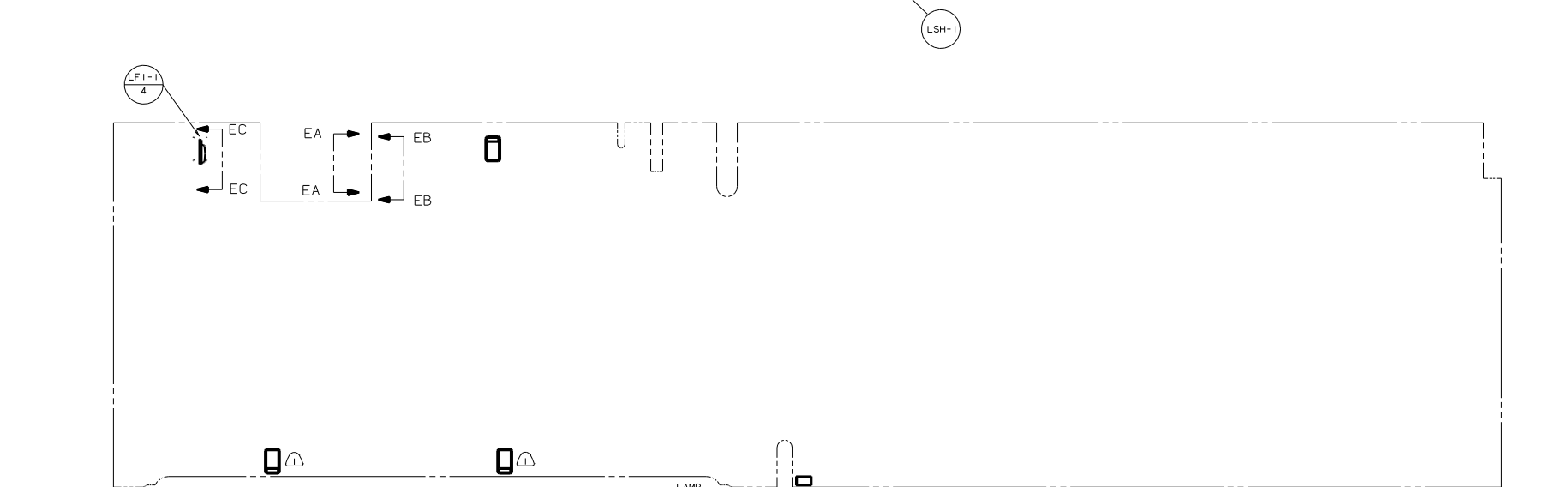
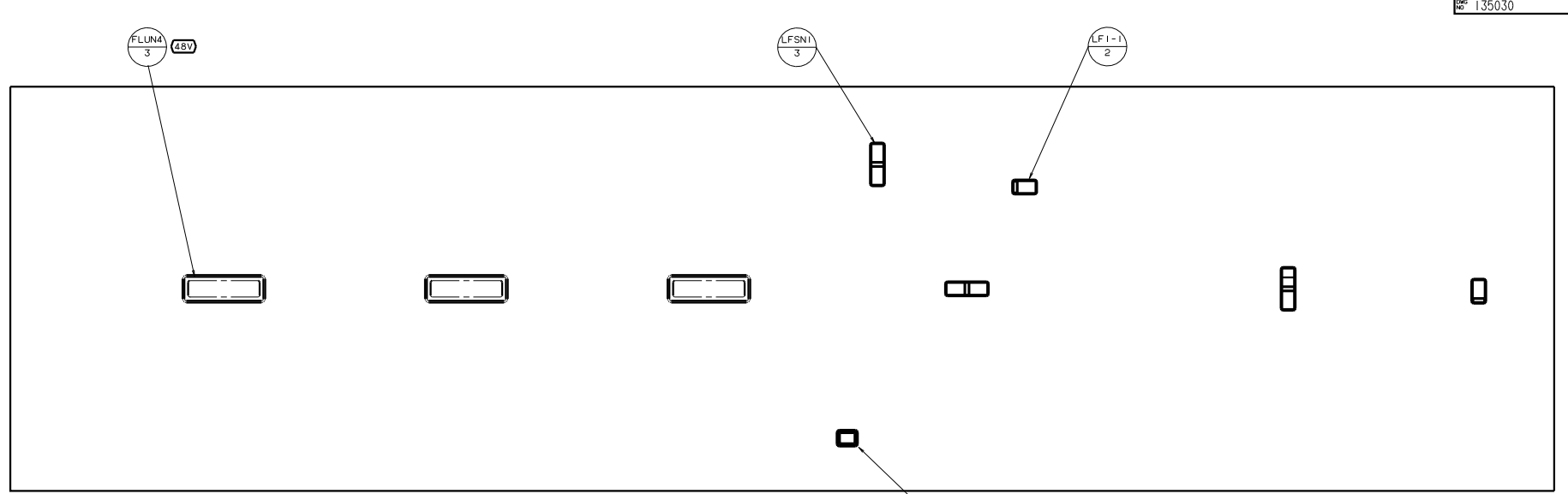


FOR ELECTRICAL TORQUE SPECIFICATIONS SEE DWG NO. 128783-01-000

265 CODES/STANDARDS-CSA/CMVSS  
 1B1 CODES/STANDARDS USA  
 01 G37G 1B1

TITLE: WIRING INSTL-BODY (12 BP)  
 SHEET 4 OF 9

NOTES:



NOTES:  
 (2) WITHOUT (52N).  
 (1) LAMPS LOCATED IN SLIDEOUT COMPARTMENTS.

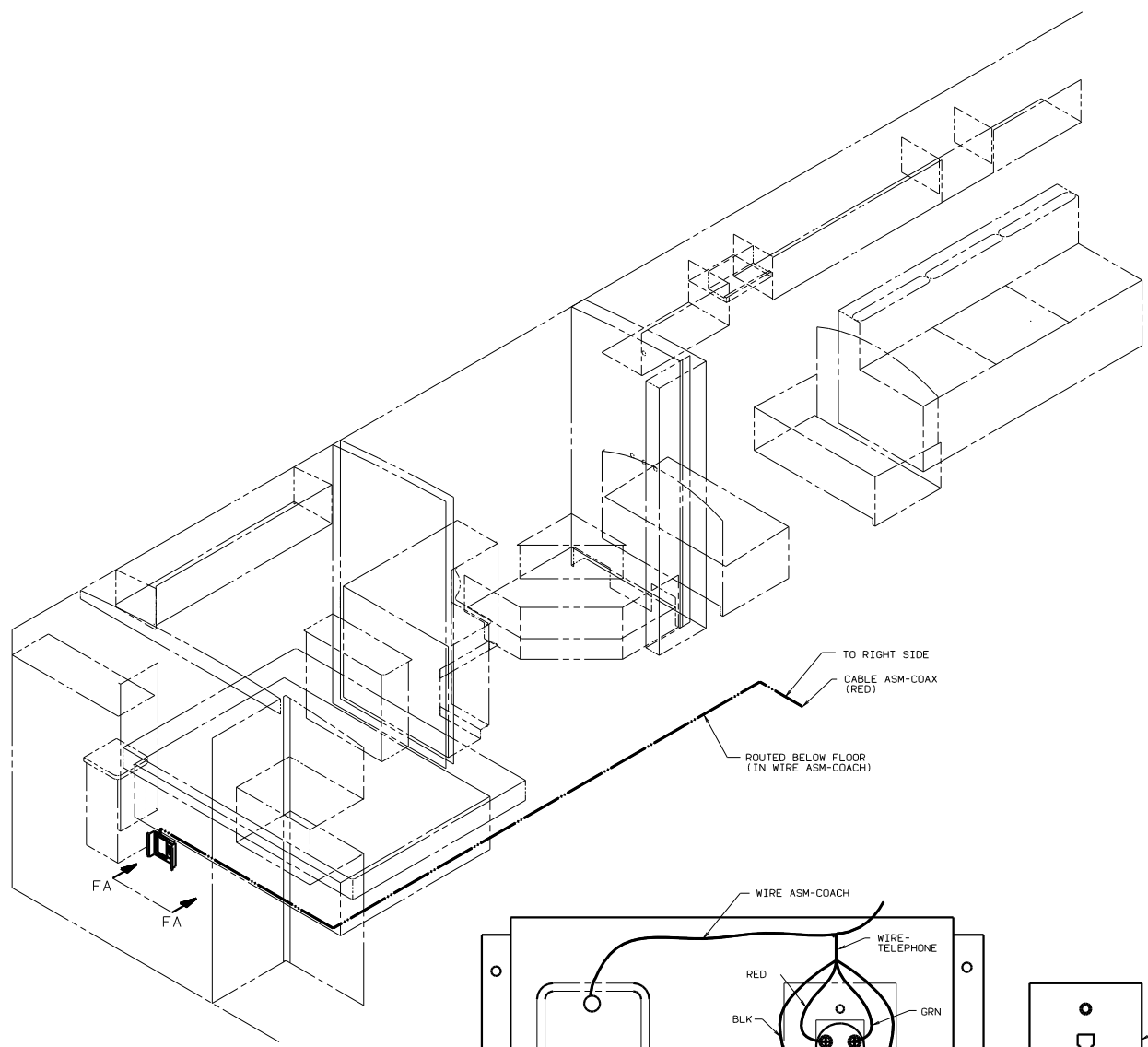
FOR ELECTRICAL  
TORQUE  
SPECIFICATIONS  
SEE DWG NO.  
128783-01-000

FOR ELECTRICAL  
CALLOUTS  
SEE DWG NO.  
121339-01-000

- (52N) AWNING - PATIO, ELECTRIC
- (48V) LIGHTS-FLUORESCENT
- (48M) LIGHTS-INCANDESCENT
- (265) CODES/STANDARDS-CSA/CMVSS
- (1B1) CODES/STANDARDS-USA

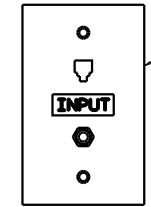
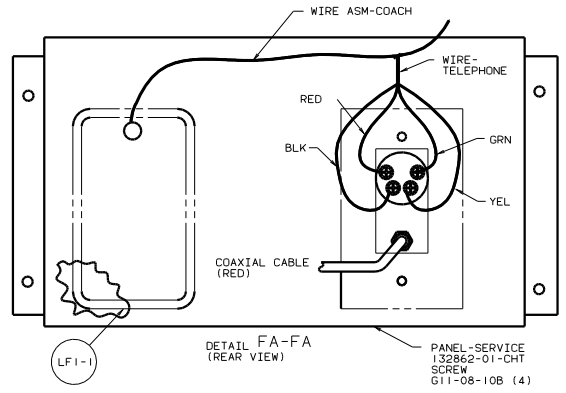
01 G37G (1B1) (265)

TITLE: WIRING INSTL-BODY, 12V (CL)  
 SHEET 5 OF 9  
 135030



TO RIGHT SIDE  
 CABLE ASM-COAX (RED)  
 ROUTED BELOW FLOOR  
 (IN WIRE ASM-COACH)

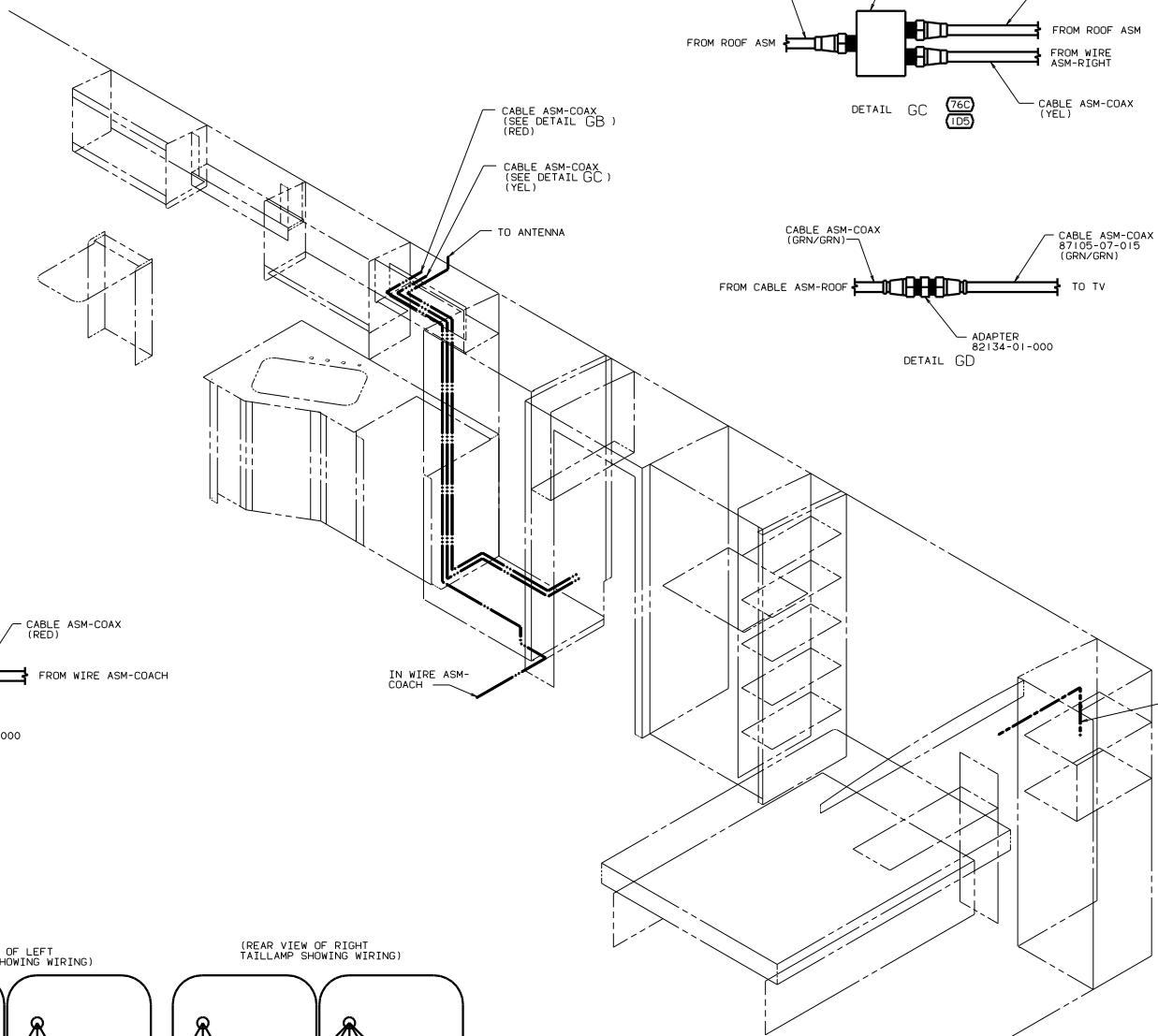
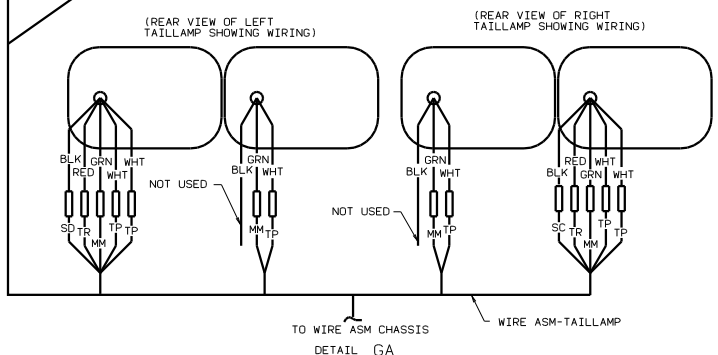
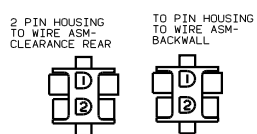
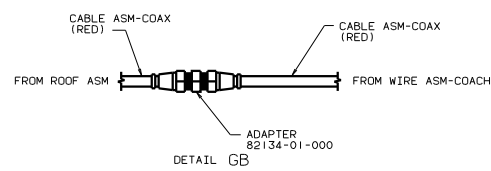
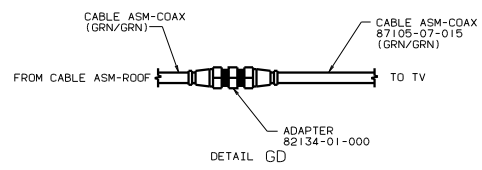
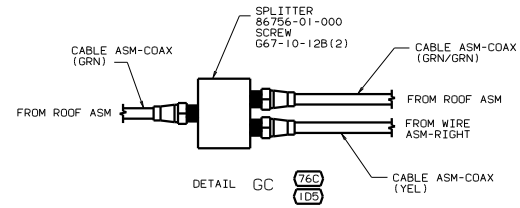
FA  
 FA



FOR ELECTRICAL CALLOUTS  
 SEE DWG NO. 121339-01-000

(265) CODES/STANDARDS-CSA/CMVSS  
 (1B1) CODES/STANDARDS USA  
 01 G37G (1B1) (265)

WIRING INSTL-BODY, 12V (L COAX)  
 SHEET 6 OF 9  
 135030

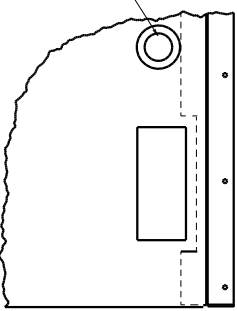


- 76C** ENTERTAINMENT CTR/EXT CASSETTE
- 265** CODES/STANDARDS-CSA/CMVSS
- 105** ENTERTAINMENT CENTR/EXT W/CD
- 101** CODES/STANDARDS USA

(X-X) FOR ELECTRICAL CALLOUTS SEE DWG NO. 121339-01-000



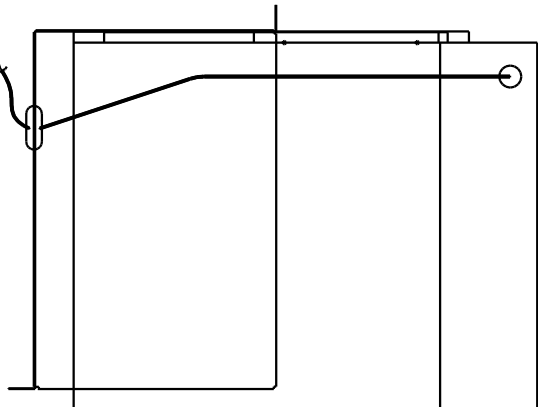
GROMMET  
23942-01-000



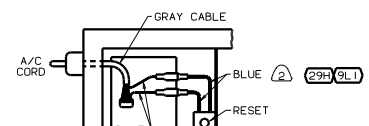
VIEW HB-HB

WIRE ASM-THERMOSTAT  
(COIL UP AND TIE EXCESS  
WIRE IN BASEMENT AREA  
WITH WIRE TIE 8343-02-000)

TO THERMOSTAT



VIEW HA-HA



VIEW HC-HC

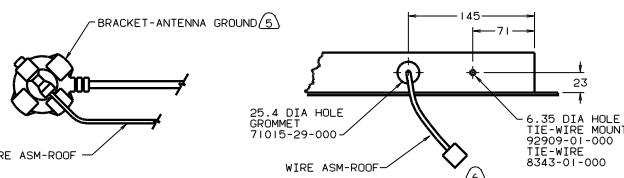
WHITE BLACK WHITE BLACK  
CIRCUIT 1 CIRCUIT 2

- NOTES:
- ② CONNECT BLUE WIRES FROM RESET TO THE BLUE WIRES WITH SPADE TERMINALS ON A/C CORD WITH ②9H & ⑨L1 FEATURE
  - ① SEE WIRING INSTL-BODY, 110V FOR ADDITIONAL INFORMATION.

- ⑨L1 HOME COMFORT PLUS PACKAGE
- ②9H HEAT PUMP-A/C CENTRAL
- ②65 CODES/STANDARDS-CSA/CMVSS
- ①B1 CODES/STANDARDS USA

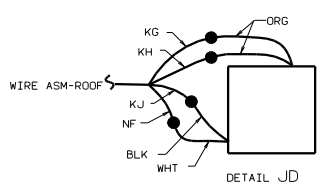
01 G37G ①B1

WIRING INSTL-BODY, 12V(C-A/C)	
DATE	REV
10/20/00	1
SHEET 8 OF 9	135030



VIEW JA-JA

VIEW JB-JB



DETAIL JD

FOR WIRING (SEE DETAIL JD)

- (1B1) LAMP 97917-01-CHT
- (1B1) SCREW G67-10-12U(EXT) (4)
- (265) LAMP 8089-02-000
- (265) SCREW G67-06-10T(EXT) (2)
- (265) CONNECTOR 58028-01-000 (2)
- SEAL

- LAMP-CLEARANCE, RED 133055-01-000 (5)
- SCREW G39-08-16T (EXT) (10)
- BASE 133055-03-000 (5)
- BULB 36196-01-000 (5)

- LAMP ASM-BRAKE 136916-01-000
- SCREW G11-08-20T (2)
- CONNECTOR 58028-01-000 (2)
- BLK/WHT - YEL
- BLK - WHT

- LAMP-MARKER, BASE 111102-01-000 (2)
- LAMP-MARKER, LENS, RED 111102-03-000 (2)
- SCREW G39-08-12U(EXT) (4)

- LAMP-LICENSE 87201-01-000
- SCREW G11-06-12U(EXT) (2)

- (6) FASTEN TO VENT.
- (5) WRAP BRACKET LEGS AROUND ANTENNA BASE.
- (4) CONNECTOR-PLUG, TRAILER (113589-01-000) TO BE SUPPLIED LOOSE IN COACH WITH TRAILER TOW PACKAGE.
- (3) CLAMP WIRES ABOVE TAILLAMP POD.
- (2) SEE DWG 76319-01-000 FOR INSTALLATION OF TV ANTENNA.
- (1) INSTALL WITH WIRES TOWARDS ROOF.

- (7) ADD RUBBER BUMPERS TO ROOF UNDER EACH END OF ANTENNA TO PREVENT CONTACT WITH ROOF.

NOTES:

- WIRE ASM-CLEARANCE LAMPS 126486-01-000
- (480) DM-1
- LAMP-CLEARANCE AMBER 132578-01-000 (5) (WIN) (ITA)
- SCREW G39-08-16T (EXT) (10) (WIN) (ITA)
- GASKET 102541-01-000 (5) (WIN)
- BULBS 36196-01-000 (5) (WIN) (ITA)

CONNECTS TO WIRE ASM-IP, MAIN

- LAMP-MARKER, BASE 111102-01-000 (2)
- LAMP-MARKER, LENSE, AMBER 111102-02-000 (2)
- RIVET 118626-02-CHT

- LAMP (1B1) 97917-01-CHT
- (1B1) SCREW G67-10-12U(EXT) (4)
- (265) LAMP 8089-02-000
- (265) SCREW G67-06-10T(EXT) (2)
- (265) CONNECTOR 58028-01-000 (2)
- SEAL

- ANTENNA-SHAFT EXTENDER 109889-04-000
- BRACKET-ANTENNA GROUND 108847-01-000
- ANTENNA 90944-01-000
- CABLE-ANTENNA EXTENSION 77069-02-000
- SEAL

(76C)

(1D5)

- LAMP-MARKER, BASE 111102-01-000 (2)
- LAMP-MARKER, LENSE, AMBER 111102-02-000 (2)
- SCREW G11-08-12U(EXT) (4)

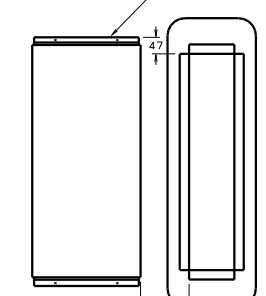
- SOLAR PANEL (290) 115504-01-000
- SCREW G11-08-16U (4)

- WIRE ASM-CLEARANCE LAMPS, RR 132729-01-000

- LIGHT ASM-STOP/TURN/TAIL 115632-01-CHT (2)
- SCREW G11-08-12U (EXT) (8)

- LIGHT ASM-STOP/TAIL/BACKUP 115632-03-CHT (2)
- CONNECTOR 58028-01-000 (2)
- SCREW G11-08-12U (EXT) (8)

- (240) WIRE ASM-CHASSIS



VIEW JC-JC

- (WIN) WINNEBAGO ONLY
- (ITA) ITASCA ONLY
- (76C) ENTERTAINMENT CTR/EXT CSETTE
- (240) TRAILER HITCH
- (1D5) ENTERTAINMENT CTR-EXT-W/CD
- (193) TV ANTENNA
- (480) SATELLITE DISH
- (290) SOLAR PANEL - 10 WATT
- (265) CODES/STANDARDS-USA/CMVSS
- (1B1) CODES STANDARDS/USA

FOR ELECTRICAL CALLOUTS SEE DWG NO. 121339-01-000