



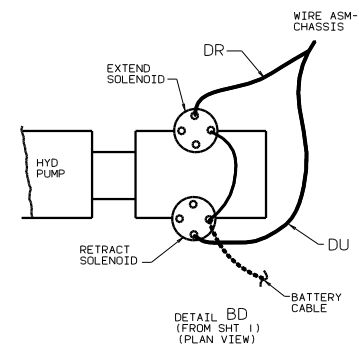
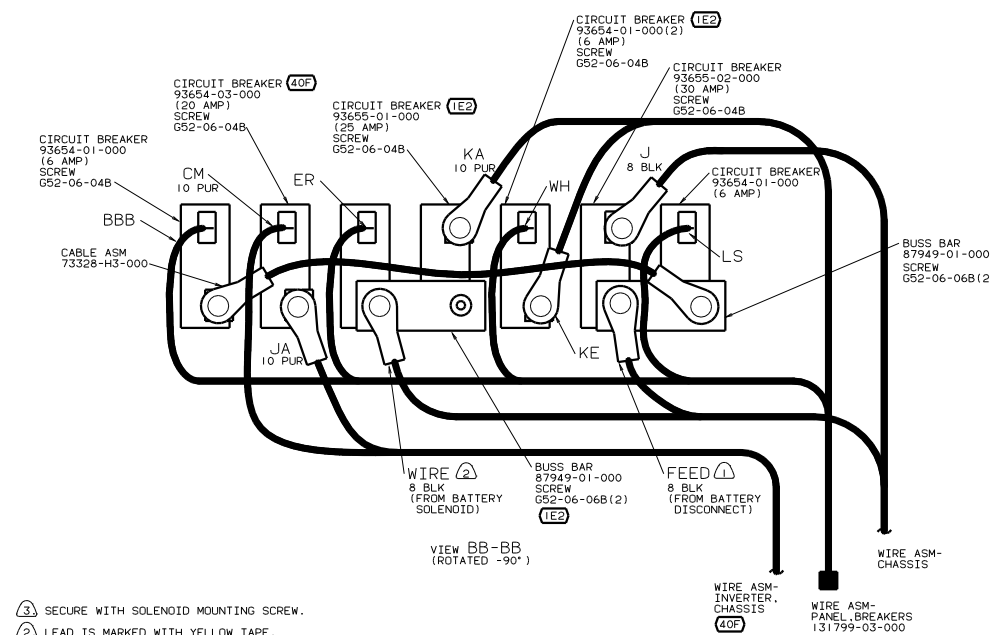
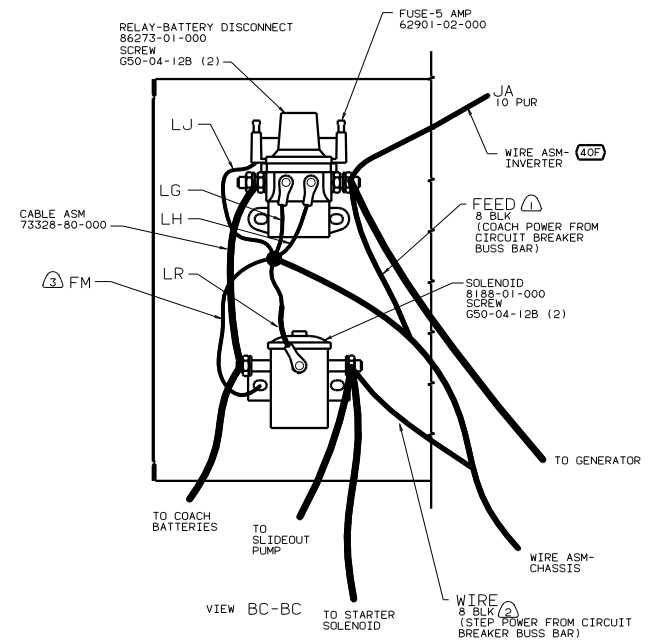
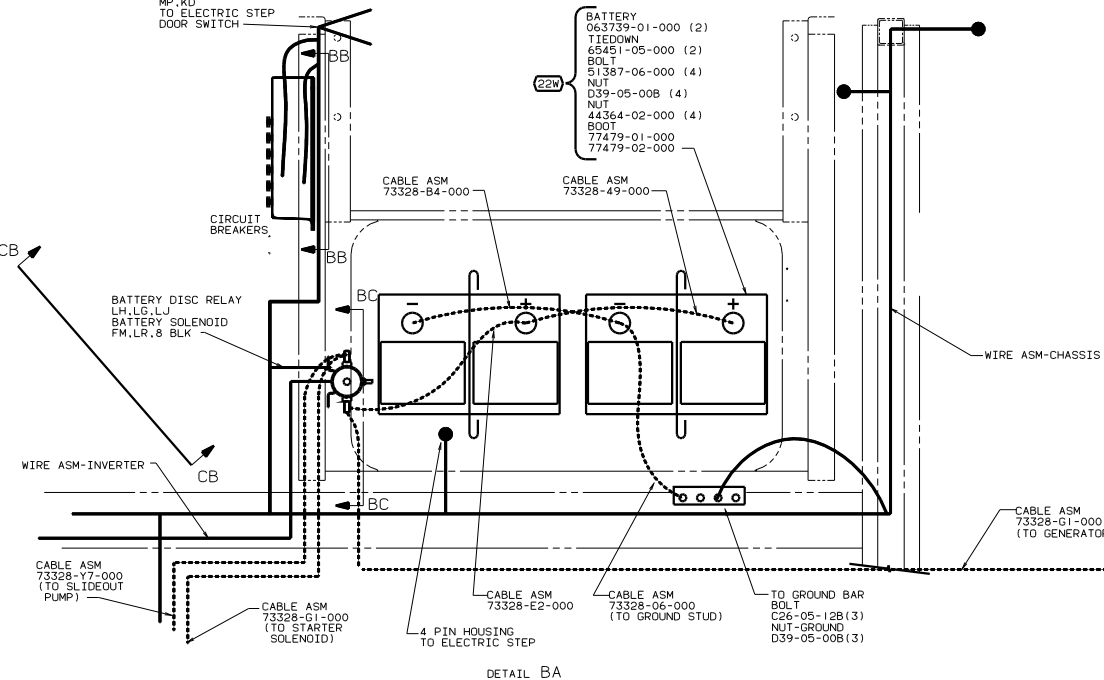
DANGER

Danger of electrical shock, burns or death. Always remove all power sources before attempting any repair, service or diagnostic work. Power can be present from shore power, generator, inverter or battery. All power sources must be disabled and secured before performing any service.



CAUTION

If you lack the skills, tools or equipment to perform diagnostic or repair work leave such work to an authorized Winnebago Industries dealer or other qualified shop.

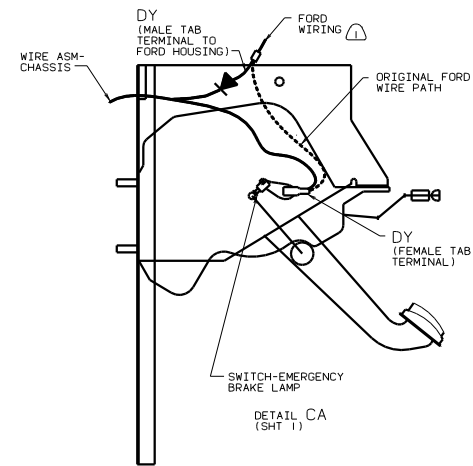
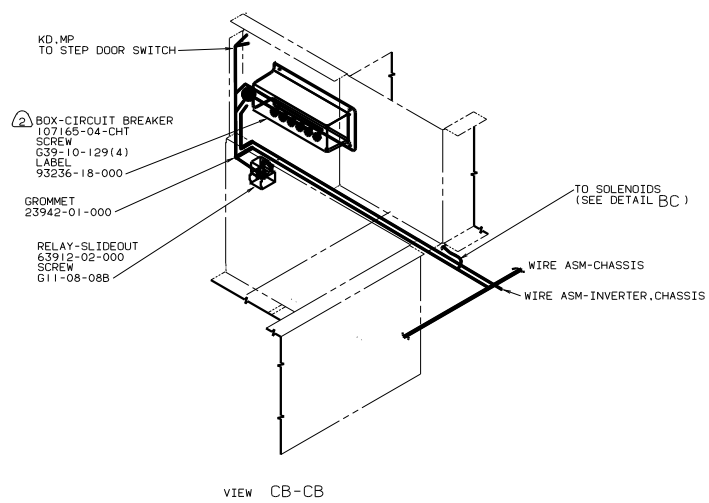


NOTES:
 (3) SECURE WITH SOLENOID MOUNTING SCREW.
 (2) LEAD IS MARKED WITH YELLOW TAPE.
 (1) LEAD IS MARKED WITH RED TAPE.

FOR ELECTRICAL TORQUE SPECIFICATIONS SEE DWG NO. 128783-01-000

- (40F) INVERTER-DC/AC-130W
- (26B) CODES/STANDARDS-CSA/CMVSS
- (22W) BATTERY-TWO
- (16E) FORD CHASSIS 14,050 LB.GWVR
- (1E2) ENTRANCE STEP-ELEC.
- (1B1) CODES/STANDARDS USA

01 430V



- 2 LOCATE BOX VERTICALLY BY CENTERING ON THE MOUNTING PLATE.
- 1 DISCONNECT FORD WIRING FROM THE PARK BRAKE INDICATOR SWITCH. RECONNECT CIRCUIT 'DY' AS SHOWN.

- 265 CODES/STANDARDS-CSA/CMVSS
- 16E FORD CHASSIS 14,050 LB.GVWR
- 1B1 CODES/STANDARDS USA

FOR ELECTRICAL TORQUE SPECIFICATIONS SEE DWG NO. 128783-01-000

01 430V

TITLE: WIRING INSTL-CHASSIS (D1LS)	
NO. OF SHEETS	TOT. SHEETS
3 OF 3	3
DWG NO 134901	