

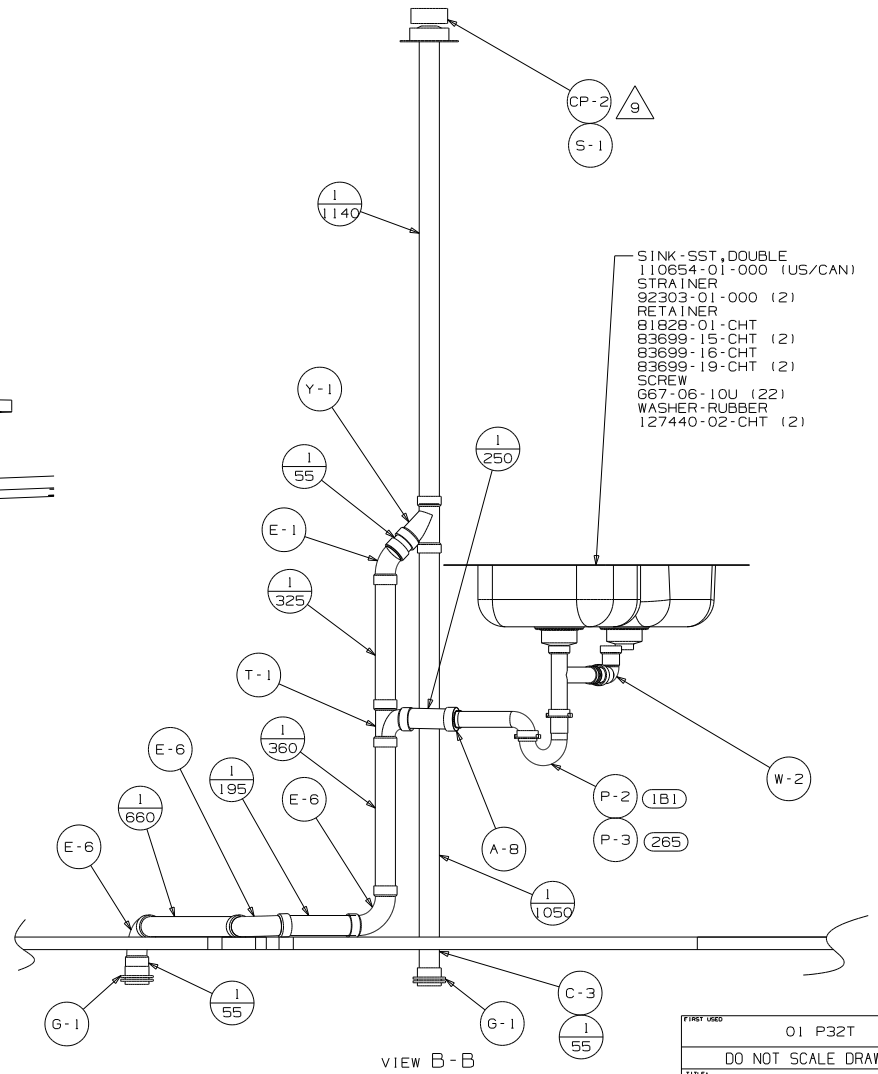
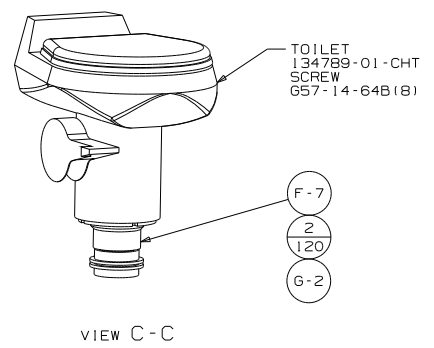
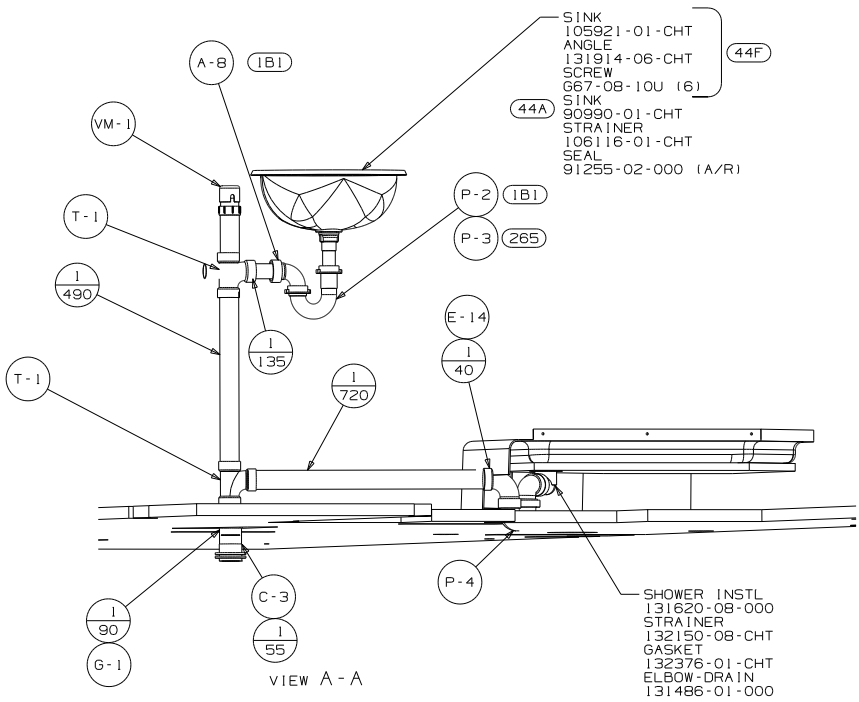
- (44A) COUNTERTOP-LAMINATE-BATH
- (44F) COUNTERTOP-SOL. SURFACE-BATH
- (43E) TOILET PORCELAIN-ROUND
- (26B) CODES/STDS-CSA/CVSS
- (1B) CODES/STANDARDS-USA

- 9 VENT PIPE MUST PROJECT 51 mm AND 64 MAX ABOVE ROOF FOR PROPER FIT AND FUNCTION.
- 8 TRIM TO FIT.
- 7 FASTEN TO BOTTOM OF UPPER FLOOR.
- 6 FOR CANADIAN UNITS EACH HOLDING TANK SHALL HAVE A CSA APPROVAL STAMPED NEAR THE TAMPO APPROVAL.
- 5 SEAL AROUND SHOWER WITH SILICONE.
- 4 ALL EXTERIOR OPENINGS AROUND PIPE TO BE SEALED WITH 100744-01-000.
- 3 ALL PIPE AND FITTINGS TO BE ASSEMBLED WITH SOLVENT 4020-01-000.
- 2 SLOPE OF TRAP ARM MUST BE 6 PER 305 mm.
- 1 SLOPE OF HORIZONTAL PIPING TO BE 6 PER 305 mm.

FRONT OF VEHICLE

(X-X)
FOR DRAINAGE CALLOUTS SEE DWG NO. 116229-01-000

| | |
|------------------------------|-----------------------------------|
| WINNEBAGO | |
| DTR | ORIG. DATE 07/27/00 |
| CHR | ALL DIMENSIONS ARE IN MILLIMETERS |
| P.E. | FIRST USED |
| W.E. | |
| DWR | 01 P32T |
| UNSPECIFIED TOLERANCES ARE: | |
| SIZE 018-151 | + |
| ONE-PLACE 12-151 | + |
| TWO-PLACE 12-151 | + |
| ANGLE | + |
| THIRD ANGLE PROJECTION | |
| DO NOT SCALE DRAWING | |
| TITLE: DRAINAGE SYSTEM INSTL | |
| SHEET 1 of 3 | PART NO 137036 |



| | |
|---------------------------------|------------------|
| FIRST USED | 01 P32T |
| DO NOT SCALE DRAWING | |
| TITLE: DRAINAGE SYSTEM INSTL | |
| SHEET 2 | 3 PART NO 137036 |

PLATFORM ASM
105193-28-XXX

PLATFORM ASM
105193-31-XXX

TANK-HOLDING
136973-02-000

TANK-HOLDING
136950-02-000

BRACKET
94756-01-CHT (7)
SCREW
639-10-10T (28)

3115

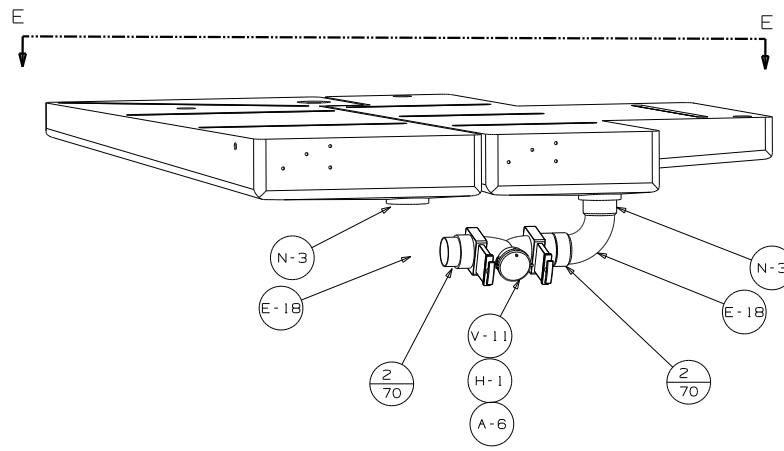
PLATFORM ASM
105193-32-XXX

186

PLATFORM ASM
105193-29-XXX

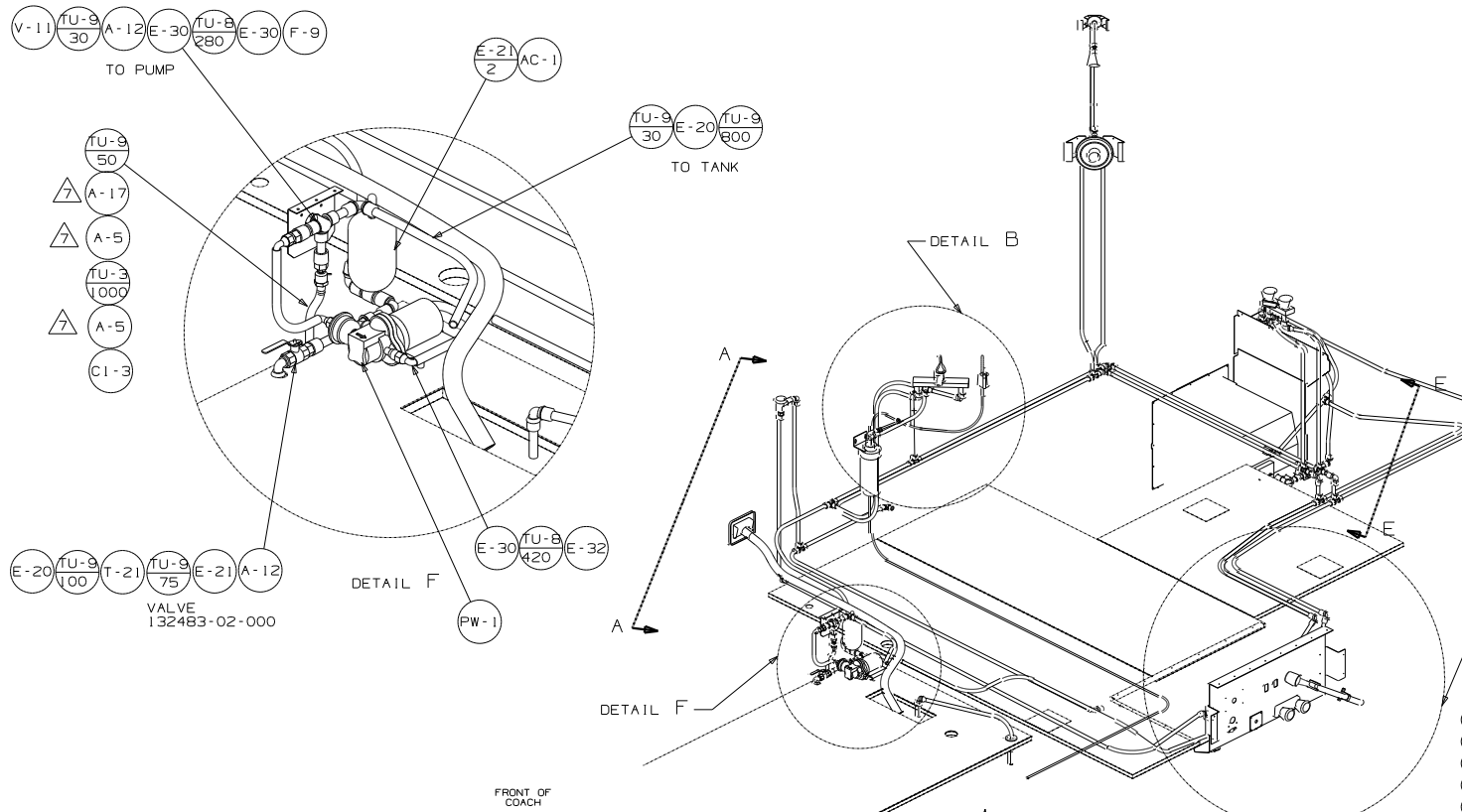
SUPPORT ASM
133839-02-CHT (2)
SCREW
639-10-20T (2)
639-10-12T (2)
ANGLE
132871-03-CHT (2)

VIEW E-E



VIEW D-D

| | | |
|---------------------------------|---|----------------|
| FIRST USED | | 01 P32T |
| DO NOT SCALE DRAWING | | |
| TITLE: DRAINAGE SYSTEM INSTL | | |
| SHEET 3 | 3 | PART NO 137036 |



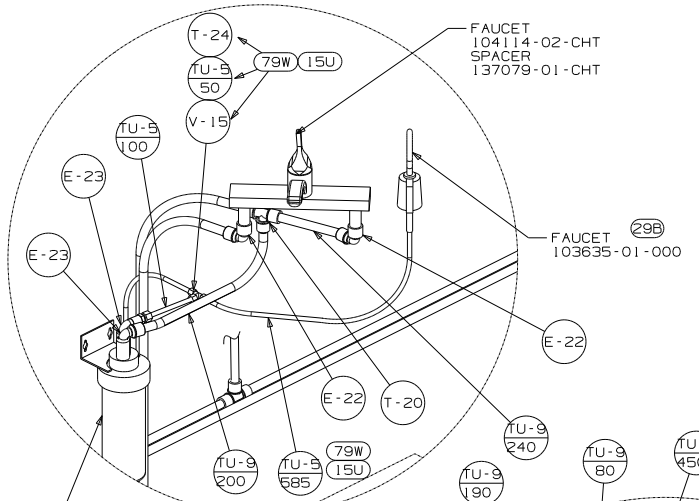
- (44F) SOLID SURFACE BATH
- (79W) 4 DOOR REFRIGERATOR W/ICEMAKER
- (64R) EXTERIOR WASH STATION
- (53J) WATER HETR BY-PASS VALVE
- (1B2) WATER HETR-10 GAL/ELEC/LP/MTR/10
- (29B) WATER PURIFIER
- (15U) REFRIGERATOR/FRZR W/ICEMAKER

- △ APPLY DECAL INSIDE OF UPPER SHOWER HEAD HOLDER TO RETAIN SHOWER HEAD UNIT INSIDE OF HOLDER.
 - △ WRAP WITH TEFLON TAPE 10405-01-000 MINIMUM THREE WRAPS.
 - △ WRAP WITH TEFLON TAPE 10405-03-000 TO FITTINGS.
 - △ WRAP WITH TEFLON TAPE 10405-02-000 TO FITTINGS.
 - △ FLUSHING SYSTEM REQUIRES 125697-06-000 INSTRUCTION SHEET.
 - △ CLAMPS MUST BE ON BARBS.
3. ALL TUBING TO BE SECURED AT 1200 INTERVALS MAXIMUM WITH CLAMP 10495-01-000 OR CLIP 9151-01-000 AND SCREW 667-10-12B.
 2. TUBING TO BE INSTALLED WITH SUFFICIENT SLOPE TO PROVIDE DRAINAGE TO NEAREST VALVE.
 1. PLASTIC FITTINGS TO BE SEALED WITH SEALANT 84456-01-000.

NOTES:

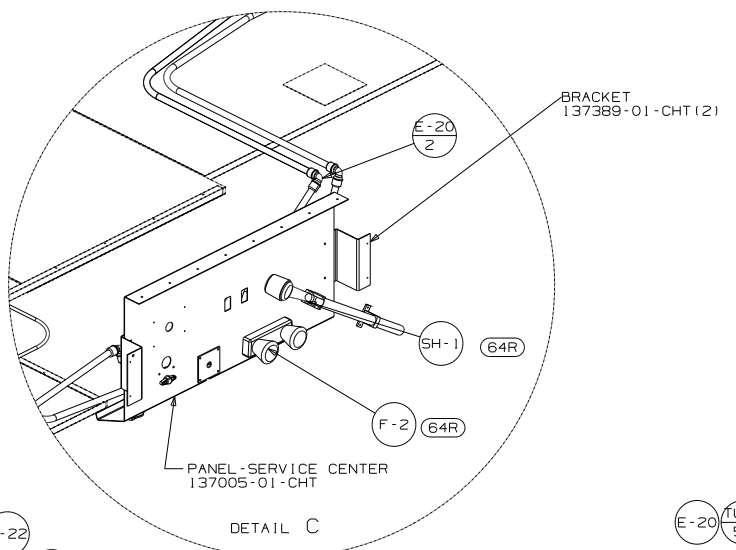
(X-X)
FOR WATER CALLOUTS SEE DWG NO 116230-01-000

| | |
|------------------------------------|-----------------------------------|
| WINNEBAGO | |
| DTN | ORIG. DATE 08/14/00 |
| CHR | ALL DIMENSIONS ARE IN MILLIMETERS |
| P.E. | FIRST USED |
| W.E. | |
| CDR | 01 P32T |
| UNSPECIFIED TOLERANCES ARE: | |
| SIZE DIM (X) | MATERIAL |
| ONE-PLACE (X,XX) | |
| TWO-PLACE (X,XXX) | |
| ANGLE | |
| THIRD ANGLE PROJECTION | |
| DO NOT SCALE DRAWING | |
| TITLE WATER SYSTEM INSTL | |
| SHEET 1 of 3 | PART NO 137035 |

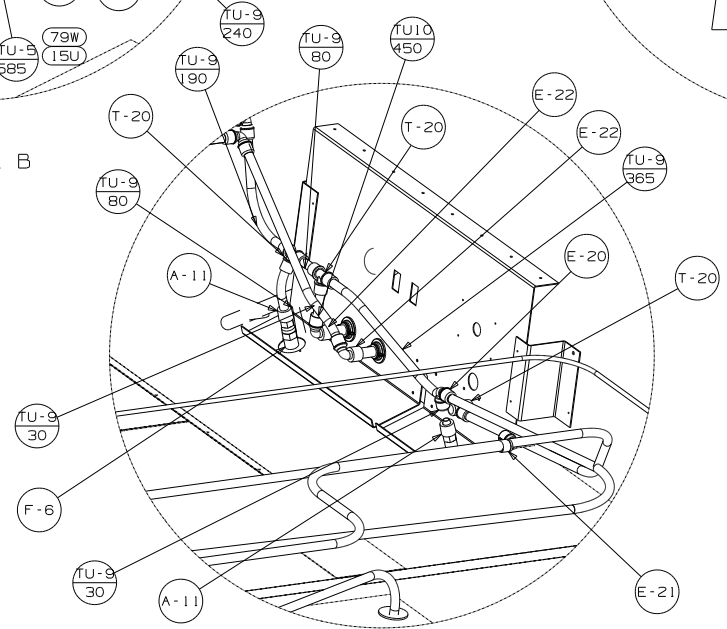


DETAIL B

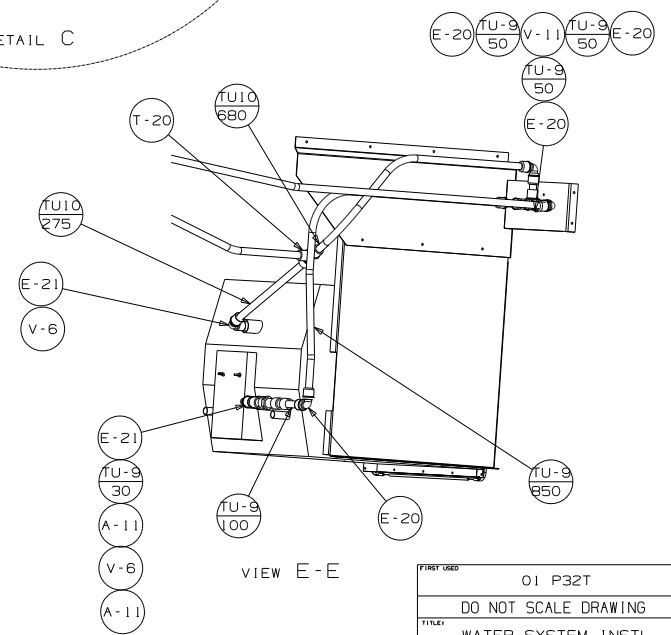
29B
 FILTER
 87200-01-000
 CARTRIDGE
 87200-02-000
 SCREW
 667-10-12U(2)



DETAIL C



DETAIL D



VIEW E-E

| | |
|------------------------------|----------------|
| FIRST USED | 01 P32T |
| DO NOT SCALE DRAWING | |
| TITLE: WATER SYSTEM INSTL | |
| SHEET 3 | PART NO 137035 |