



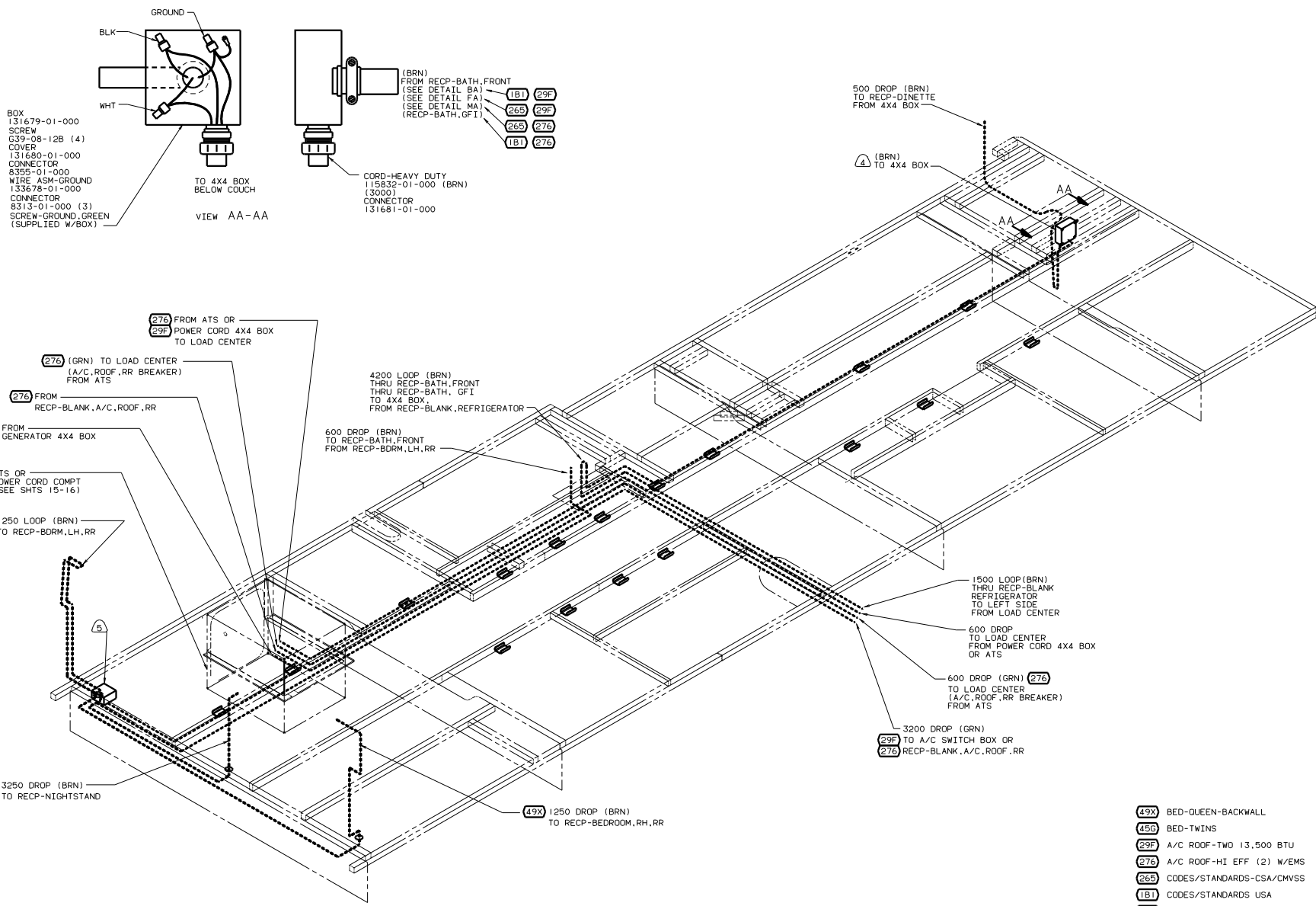
DANGER

Danger of electrical shock, burns or death. Always remove all power sources before attempting any repair, service or diagnostic work. Power can be present from shore power, generator, inverter or battery. All power sources must be disabled and secured before performing any service.



CAUTION

If you lack the skills, tools or equipment to perform diagnostic or repair work leave such work to an authorized Winnebago Industries dealer or other qualified shop.



- BOX 131679-01-000
- SCREW G39-08-12B (4)
- COVER 131680-01-000
- CONNECTOR 8355-01-000
- WIRE ASM-GROUND 133678-01-000
- CONNECTOR 8313-01-000 (3)
- SCREW-GROUND_GREEN (SUPPLIED W/BOX)

TO 4X4 BOX BELOW COUCH
VIEW AA-AA

- (BRN) FROM RECP-BATH, FRONT (SEE DETAIL BA)
 - (SEE DETAIL FA)
 - (SEE DETAIL MA)
 - (RECP-BATH, GFI)
 - 1B1 29F
 - 26S 27G
 - 26S 27G
 - 1B1 27G
- CORD-HEAVY DUTY 115832-01-000 (3000) CONNECTOR 131681-01-000

500 DROP (BRN) TO RECP-DINETTE FROM 4X4 BOX

(A) (BRN) TO 4X4 BOX

- (276) FROM ATS OR POWER CORD 4X4 BOX TO LOAD CENTER
- (276) (GRN) TO LOAD CENTER (A/C, ROOF, RR BREAKER) FROM ATS
- (276) FROM RECP-BLANK, A/C, ROOF, RR
- FROM GENERATOR 4X4 BOX
- ATS OR POWER CORD COMPT (SEE SHTS 15-16)

(49X) 1250 LOOP (BRN) TO RECP-BDRM, LH, RR

(45G) 3250 DROP (BRN) TO RECP-NIGHTSTAND

(45G) 3250 DROP (BRN) TO RECP-NIGHTSTAND

(S) SEE GENERATOR INSTALLATION FOR MORE INFORMATION.

(A) MOUNT ON OUTER SIDE OF PANEL.

3. WIRES THAT REST ON WIRE TRAYS ARE TO BE TIED DOWN WITH WIRE TIE 8343-02-000.

2. CLAMP TO FLOOR SUPPORT TUBES AS NECESSARY WITH CLAMP 10497-01-000

1. ALL WIRE TO BE CLAMPED WITH CLAMP 10495-01-000 OR CLIP 80734-01-000 EVERY 700. USE SCREW G67-10-12B UNLESS OTHERWISE SPECIFIED.

NOTES:

4200 LOOP (BRN) THRU RECP-BATH, FRONT THRU RECP-BATH, GFI TO 4X4 BOX FROM RECP-BLANK, REFRIGERATOR

600 DROP (BRN) TO RECP-BATH, FRONT FROM RECP-BDRM, LH, RR

1500 LOOP (BRN) THRU RECP-BLANK REFRIGERATOR TO LEFT SIDE FROM LOAD CENTER

600 DROP TO LOAD CENTER FROM POWER CORD 4X4 BOX OR ATS

600 DROP (GRN) (276) TO LOAD CENTER (A/C, ROOF, RR BREAKER) FROM ATS

3200 DROP (GRN) (29F) TO A/C SWITCH BOX OR (276) RECP-BLANK, A/C, ROOF, RR

(49X) 1250 DROP (BRN) TO RECP-BEDROOM, RH, RR

- (49X) BED-QUEEN-BACKWALL
- (45G) BED-TWIN
- (29F) A/C ROOF-TWO 13,500 BTU
- (276) A/C ROOF-HI EFF (2) W/EMS
- (26S) CODES/STANDARDS-CSA/CMVSS
- (1B1) CODES/STANDARDS USA
- (12D) ELECTRICAL SYSTEM 30 AMP
- (09L) SLIDEOUT ROOM-FRONT LEFT

(09L) (1B1) (12D) (26S)

FOR ELECTRICAL TORQUE SPECIFICATIONS SEE DWG NO. 128783-01-000

FOR ELECTRICAL CALLOUTS SEE DWG NO. 121339-01-000

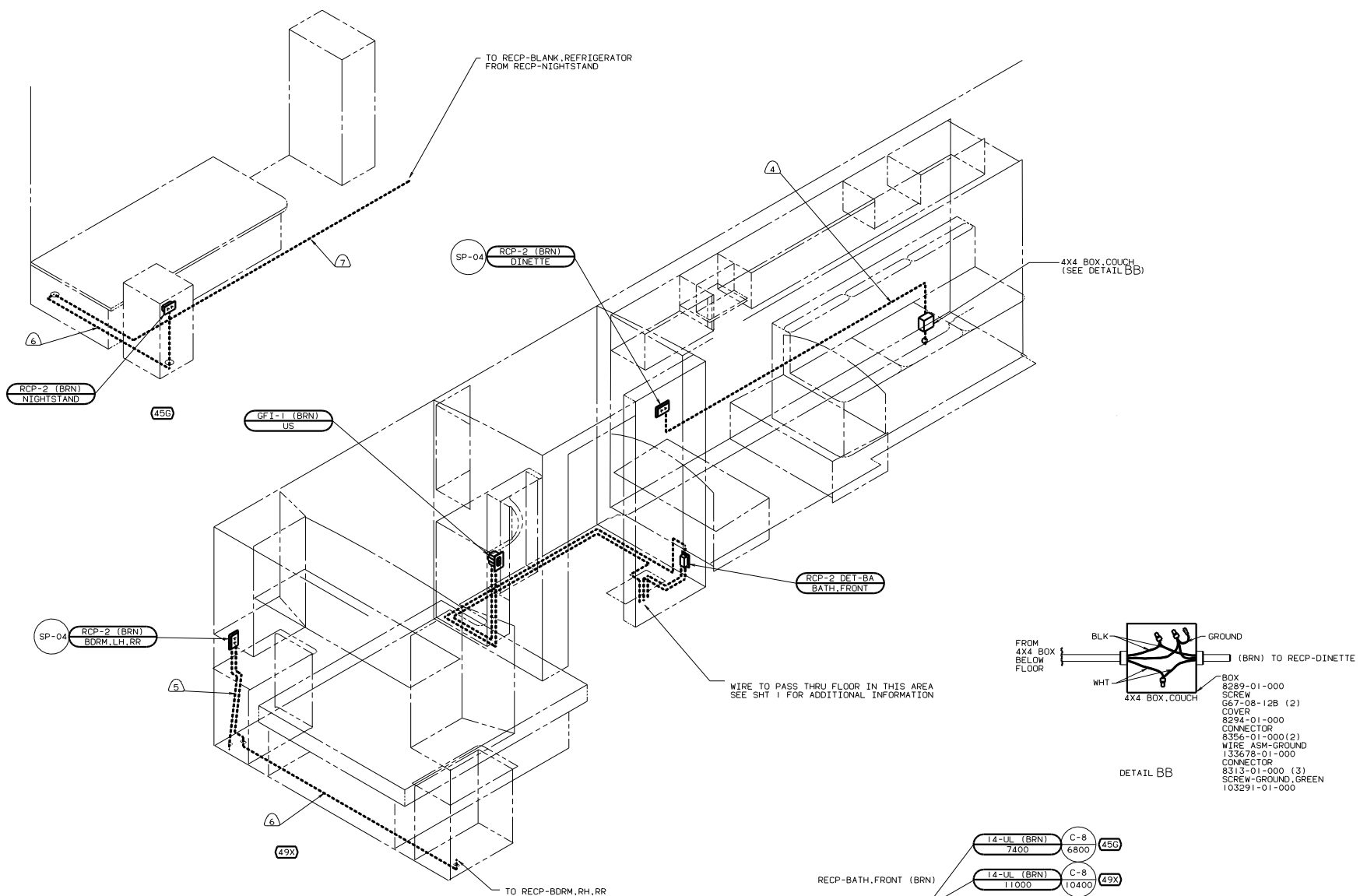
WINNEBAGO 00 F33V

OF 17	DATE	UNSPECIFIED TOLERANCES ARE:	MATERIAL
OMP	DATE	WHOLE DIM (IN)	
PIE	DATE	ONE-PLACE (IN.XI)	
D/E	DATE	HOLE-PLACE (IN.XI)	
DATE	DATE	ANGLE	
DATE	DATE	THIRD ANGLE PROJECTION	

WIRING INSTL - BODY, 110V (BF)

REV # SCALE NOTE 100% 100% SCALE DRAWING 110V 15A 134331

ALL DIMENSIONS ARE IN MILLIMETERS SHEET 1 OF 17 1 E NO



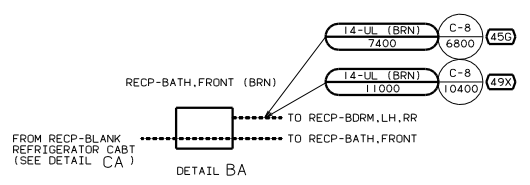
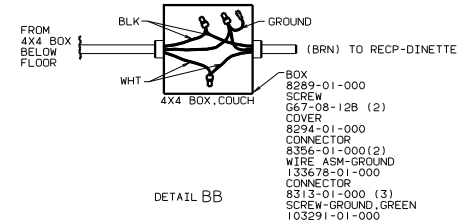
- ⑦ WIRES ROUTED BELOW FLOOR.
- ⑥ ROUTE WIRES THRU FLOOR.
- ⑤ ROUTE WIRES THRU SIDEWALL.
- ④ WIRES IN SIDEWALL.

3. ALL WIRES ARE TO BE CLAMPED WITH CLAMP 10495 WITHIN 200 OF OUTLET BOXES, USE SCREW G67-10-12B.

2. ALL WIRE ROUTED BELOW FLOOR TO BE CLAMPED WITH CLAMP 10497 AND SCREW G39-08-10 OR TIED WITH WIRE TIE 8343 FIRMLY AGAINST UPPER FLOOR SUPPORT AS REQUIRED AT LEAST EVERY 700MM OR AS OTHERWISE SPECIFIED.

1. ALL WIRE ROUTED ABOVE FLOOR TO BE CLAMPED WITH CLAMP 10495 AND SCREW G67-10-12B OR TIED WITH WIRE TIE 8343 AS REQUIRED AT LEAST EVERY 700MM OR AS OTHERWISE SPECIFIED.

NOTES:



FOR ELECTRICAL TORQUE SPECIFICATIONS SEE DWG NO. 128783-01-000

FOR ELECTRICAL CALLOUTS SEE DWG NO. 121339-01-000

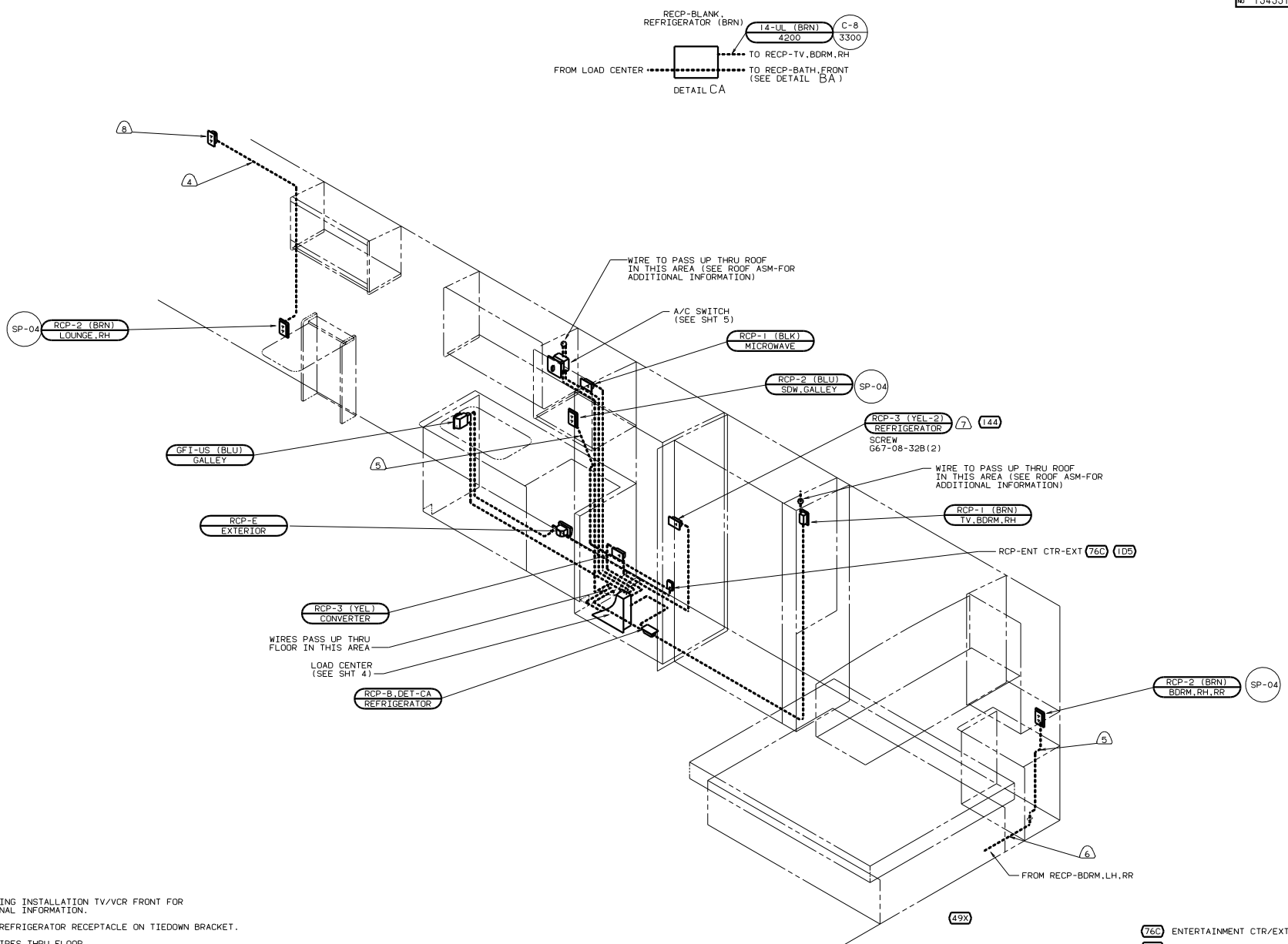
- ④9X BED-QUEEN-BACKWALL
- ④5G BED-TWINS
- ②9F A/C ROOF-TWO 13,500 BTU
- ①B1 CODES STANDARDS/USA
- ①2D ELECTRICAL SYSTEM 30 AMP
- ①2L SLIDEOUT ROOM-FRONT LEFT

09L 1B1 12D 29F 00 F33V

WIRING INSTL - BODY, 110V (130US)

SHEET 2 OF 17

134331



- ⑧ SEE WIRING INSTALLATION TV/VCR FRONT FOR ADDITIONAL INFORMATION.
- ⑦ LOCATE REFRIGERATOR RECEPTACLE ON TIEDOWN BRACKET.
- ⑥ ROUTE WIRES THRU FLOOR.
- ⑤ ROUTE WIRES THRU SIDEWALL.
- ④ WIRES IN SIDEWALL.

3. ALL WIRES ARE TO BE CLAMPED WITH CLAMP 10495 WITHIN 200 OF OUTLET BOXES, USE SCREW G67-10-12B.

2. ALL WIRE ROUTED BELOW FLOOR TO BE CLAMPED WITH CLAMP 10497 AND SCREW G39-08-10 OR TIED WITH WIRE TIE 8343 FIRMLY AGAINST UPPER FLOOR SUPPORT AS REQUIRED AT LEAST EVERY 700MM OR AS OTHERWISE SPECIFIED.

1. ALL WIRE ROUTED ABOVE FLOOR TO BE CLAMPED WITH CLAMP 10495 AND SCREW G67-10-12B OR TIED WITH WIRE TIE 8343 AS REQUIRED AT LEAST EVERY 700MM OR AS OTHERWISE SPECIFIED.

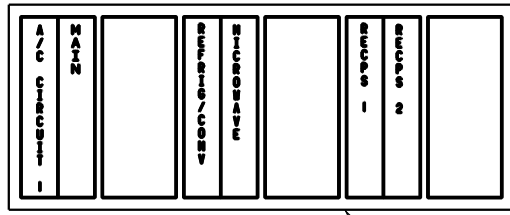
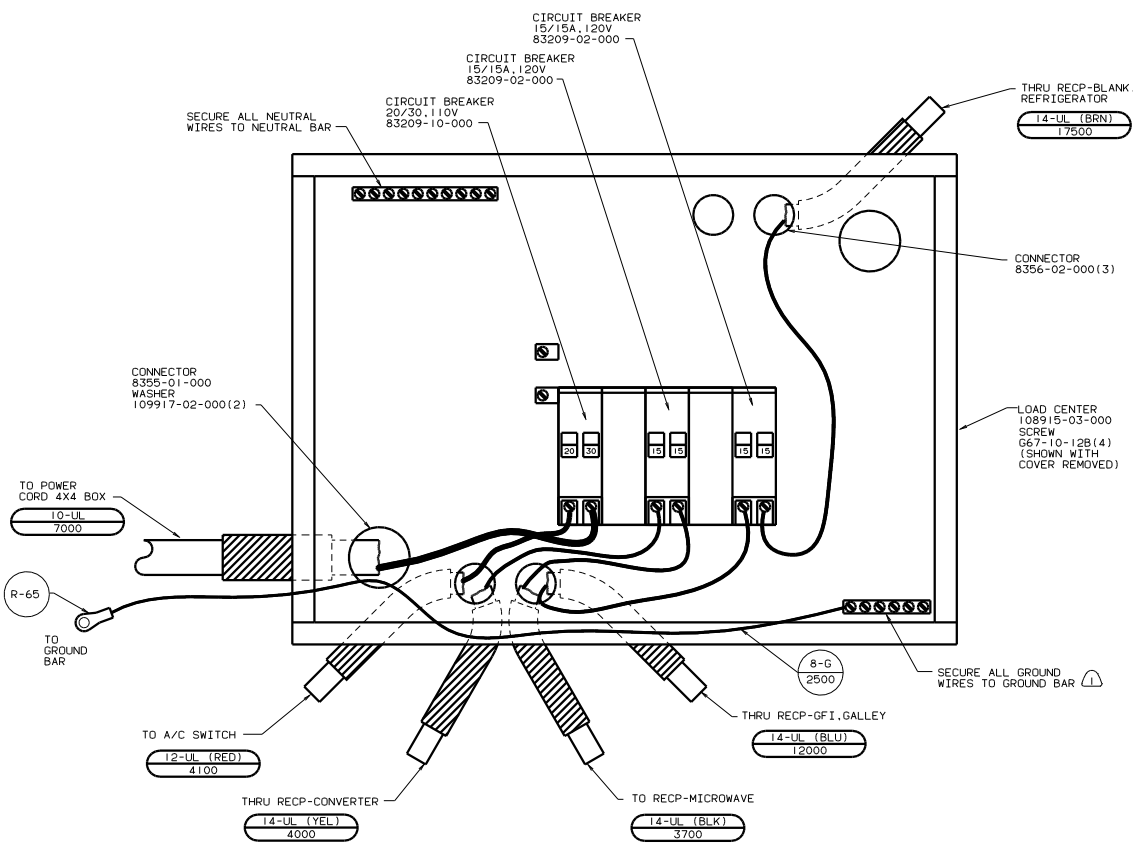
NOTES:

- ⑦⑥C ENTERTAINMENT CTR/EXT CSETTE
- ④⑨③ BED-QUEEN-BACKWALL
- ②⑨① A/C ROOF-TWO 13.500 BTU
- ①②⑤ ENTERTAINMENT CTR-EXT-W/CD
- ①②① CODES STANDARDS/USA
- ①④④ REFRIGERATOR-DOUBLE DOOR
- ①②② ELECTRICAL SYSTEM 30 AMP

FOR ELECTRICAL TORQUE SPECIFICATIONS SEE DWG NO. 128783-01-000

FOR DETAIL CALLOUTS SEE DWG NO. 130375-01-000

WIRING INSTL-BODY.110V(R30US)
SHEET 3 OF 17
134331



INSTALL LABEL ON FRONT PANEL BELOW BREAKERS BETWEEN MOUNTING HOLES

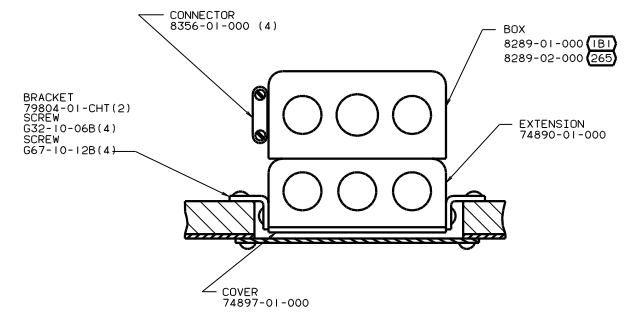
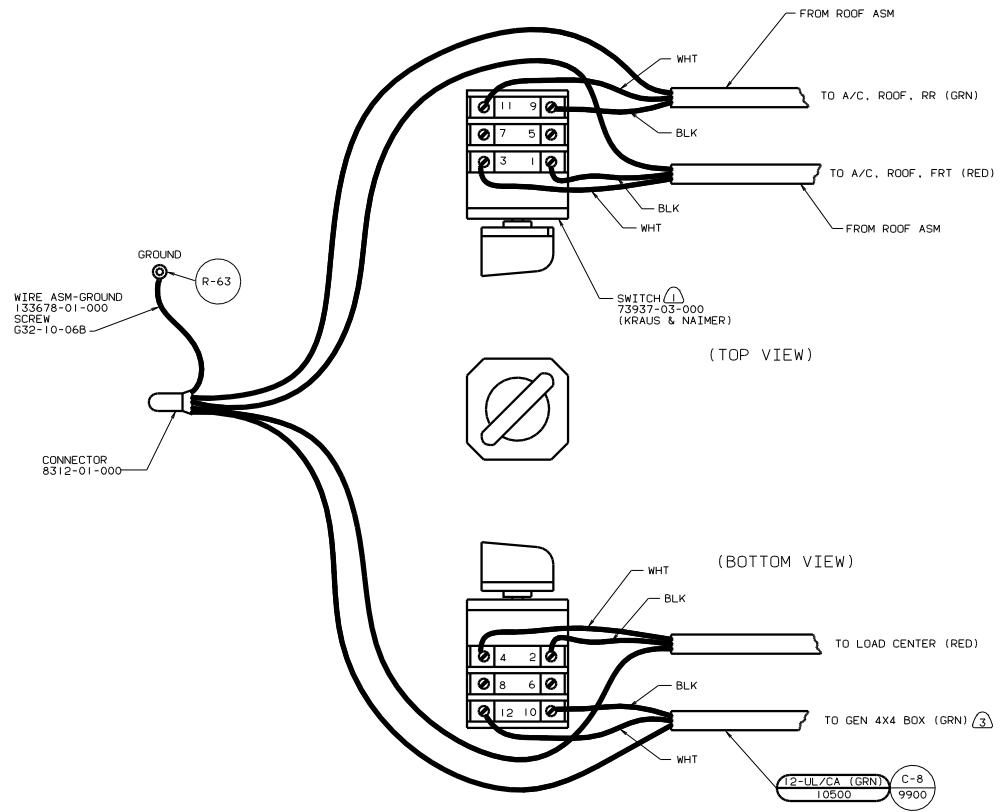
- 2. ALL CABLES SHALL BE COVERED WITH CONVOLUTE SLIT 41953-01-000 UNLESS OTHERWISE SPECIFIED, 600 LESS THAN CABLE LENGTH.
- ⚠ ALL GROUND WIRES TO BE COVERED WITH TUBING 8041-02-000.

- 29F A/C ROOF-TWO 13,500 BTU
- 1B1 CODES STANDARDS/USA
- 12D ELECTRICAL SYSTEM 30 AMP SLIDEOUT ROOM-FRONT LEFT
- 09L

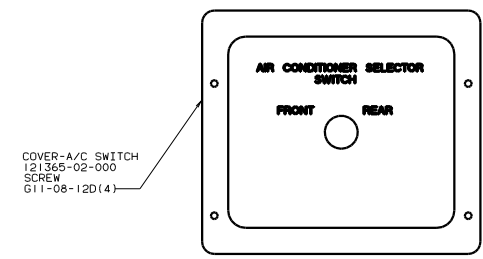
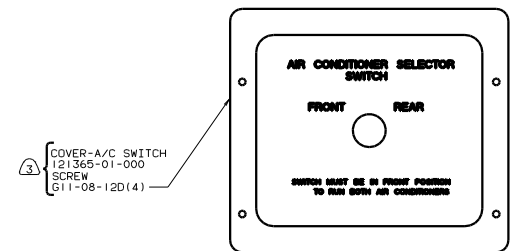
FOR ELECTRICAL TORQUE SPECIFICATIONS SEE DWG NO. 128783-01-000

FOR DETAIL CALLOUTS SEE DWG NO. 130375-01-000

09L 12D 1B1 29F 00 F33V
 WIRING INSTL-BODY,110V(LC30US)
 SHEET 4 of 17



TOP VIEW OF BOX



- NOTES:
- ③ USE WITH 5000 WATT GENERATOR OR LARGER.
 - 2. ALL GROUND WIRES TO BE COVERED WITH TUBING 8041-02-000.
 - ① FASTEN SWITCH TO COVER 74897-01-000 BEFORE FASTENING COVER TO BOX.

FOR ELECTRICAL TORQUE SPECIFICATIONS SEE DWG NO. 128783-01-000

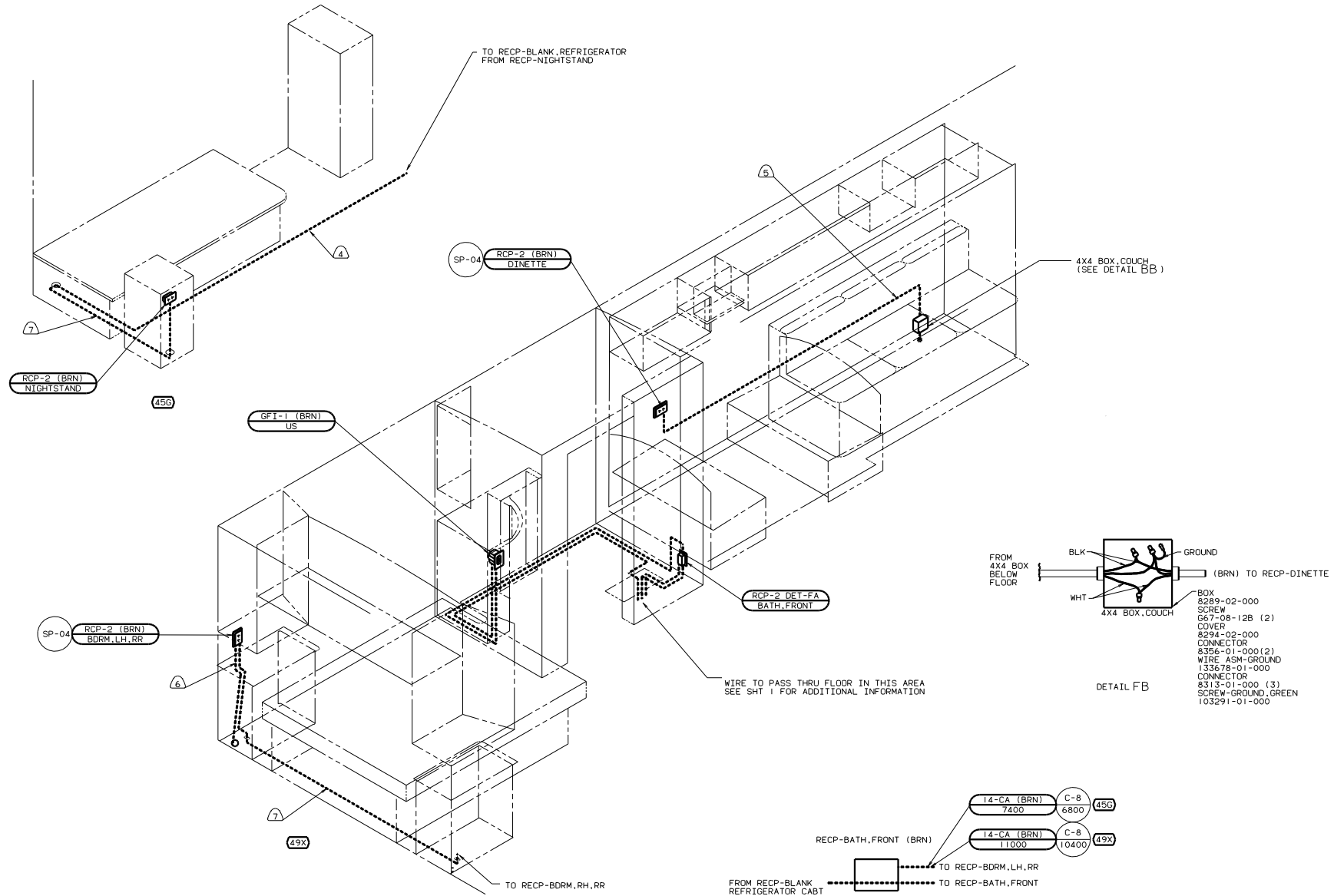
FOR ELECTRICAL CALLOUTS SEE DWG NO. 121339-01-000

- (265) CODES/STANDARDS-CSA/CMVSS
- (29F) A/C ROOF-TWO 13,500 BTU
- (1B1) CODES STANDARDS/USA
- (12D) ELECTRICAL SYSTEM 30 AMP

(12D) (1B1) (265) (29F) 00 F33V

WIRING INSTL-BODY,110V(A/C SW)

134331



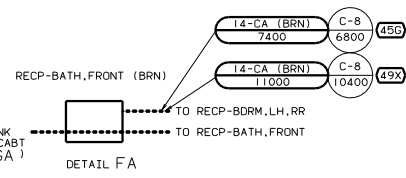
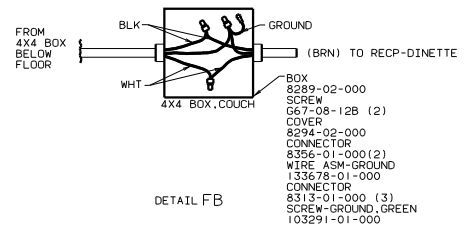
- ⑦ ROUTE WIRES THRU FLOOR.
- ⑥ ROUTE WIRES THRU SIDEWALL.
- ⑤ WIRES IN SIDEWALL.
- ④ WIRES ROUTED BELOW FLOOR.

3. ALL WIRES ARE TO BE CLAMPED WITH CLAMP 10495 WITHIN 200 OF OUTLET BOXES, USE SCREW G67-10-12B.

2. ALL WIRE ROUTED BELOW FLOOR TO BE CLAMPED WITH CLAMP 10497 AND SCREW G39-08-10 OR TIED WITH WIRE TIE 8343 FIRMLY AGAINST UPPER FLOOR SUPPORT AS REQUIRED AT LEAST EVERY 700MM OR AS OTHERWISE SPECIFIED.

1. ALL WIRE ROUTED ABOVE FLOOR TO BE CLAMPED WITH CLAMP 10495 AND SCREW G67-10-12B OR TIED WITH WIRE TIE 8343 AS REQUIRED AT LEAST EVERY 700MM OR AS OTHERWISE SPECIFIED.

NOTES:

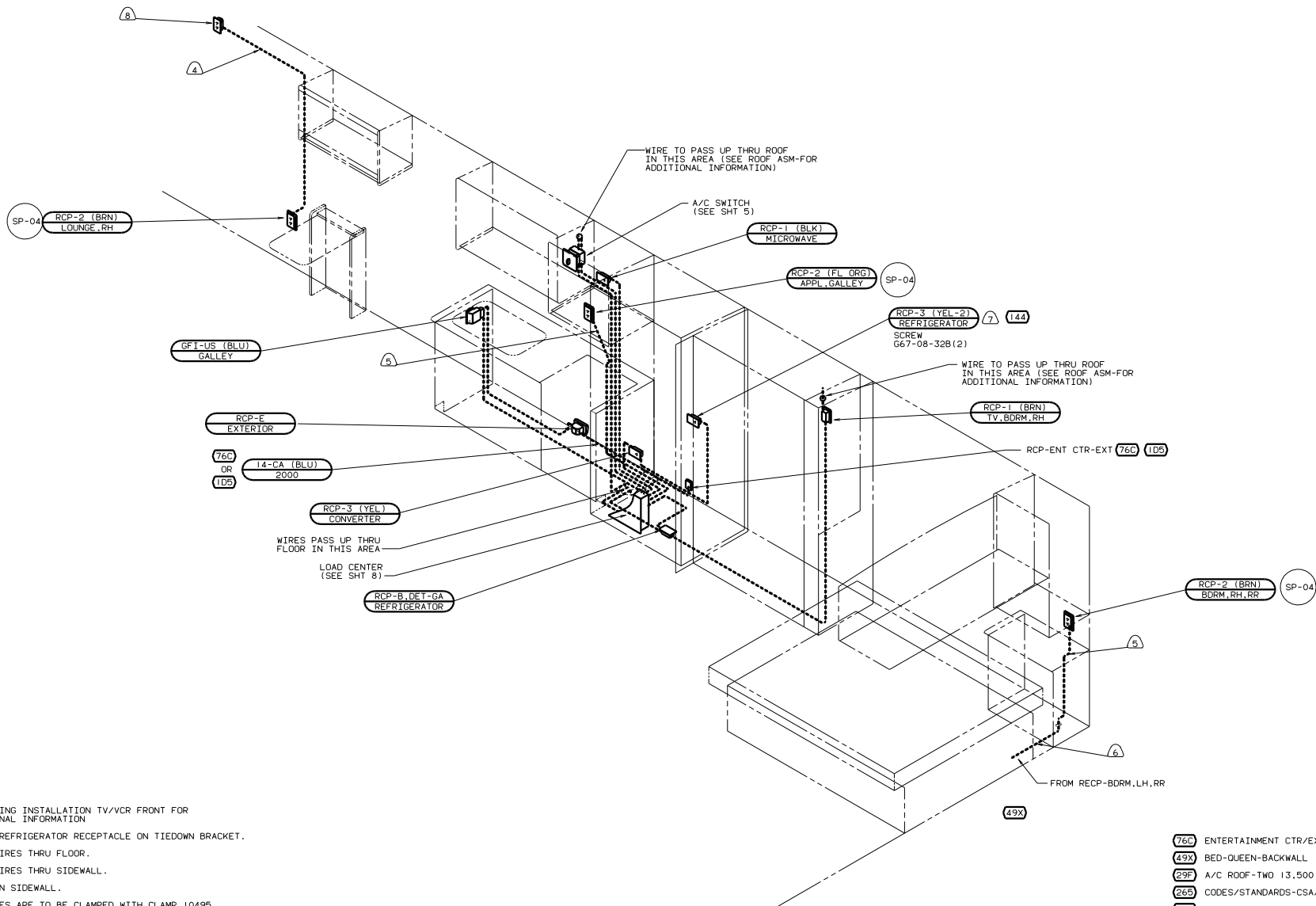
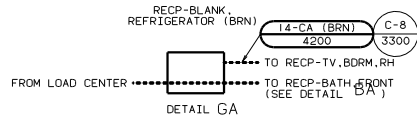


- ④⑨ BED-QUEEN-BACKWALL
- ④⑤ BED-TWINS
- ②⑥⑤ CODES/STANDARDS-CSA/CMVSS
- ②⑨F A/C ROOF-TWO 13,500 BTU
- ①②② ELECTRICAL SYSTEM 30 AMP
- ②⑨L SLIDEOUT ROOM-FRONT LEFT

FOR ELECTRICAL TORQUE SPECIFICATIONS SEE DWG NO. 128783-01-000

FOR ELECTRICAL CALLOUTS SEE DWG NO. 121339-01-000

WIRING INSTL - BODY 110V(130CA)
 SHEET 6 OF 17
 134331



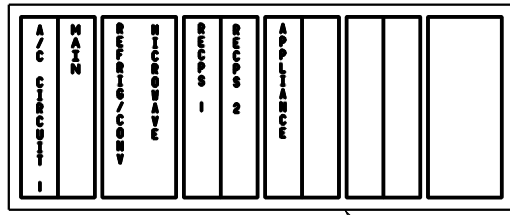
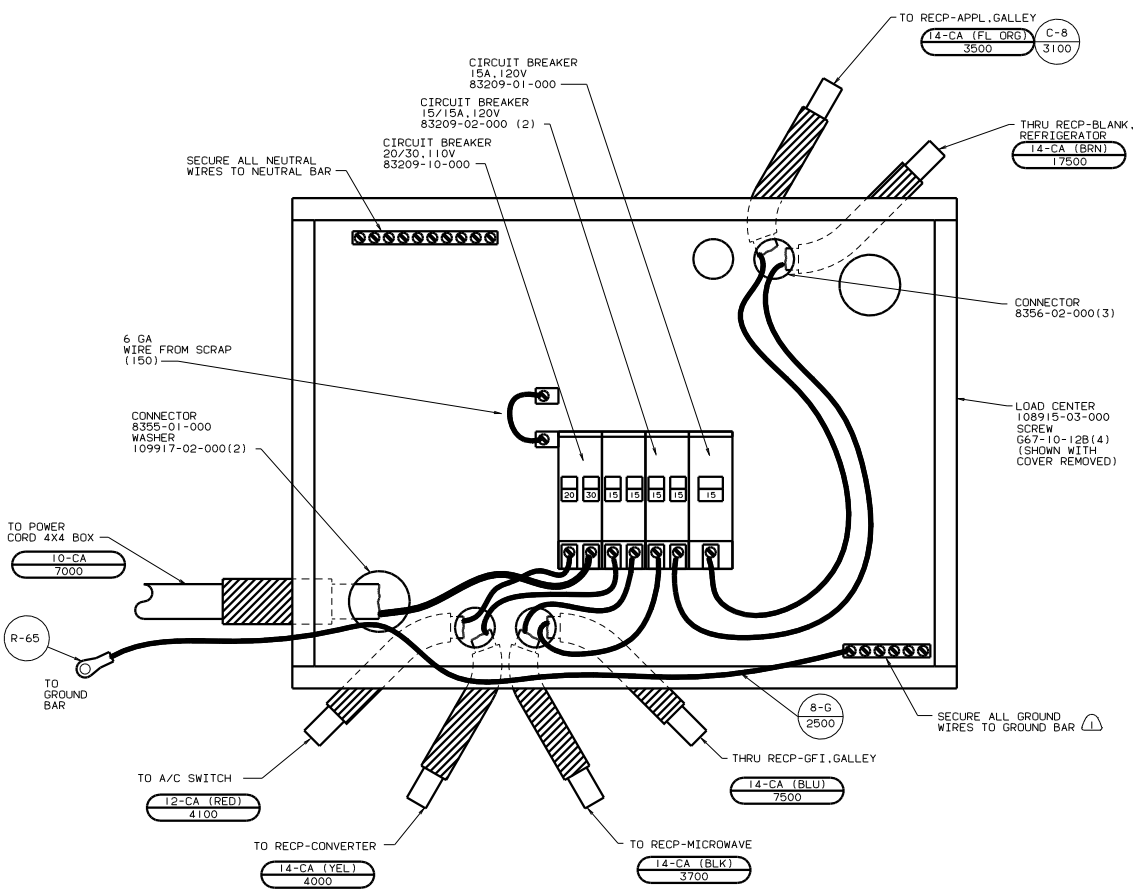
- ⑧ SEE WIRING INSTALLATION TV/VCR FRONT FOR ADDITIONAL INFORMATION
 - ⑦ LOCATE REFRIGERATOR RECEPTACLE ON TIEDOWN BRACKET.
 - ⑥ ROUTE WIRES THRU FLOOR.
 - ⑤ ROUTE WIRES THRU SIDEWALL.
 - ④ WIRES IN SIDEWALL.
3. ALL WIRES ARE TO BE CLAMPED WITH CLAMP 10495 WITHIN 200 OF OUTLET BOXES, USE SCREW G67-10-12B.
 2. ALL WIRE ROUTED BELOW FLOOR TO BE CLAMPED WITH CLAMP 10497 AND SCREW G39-08-10 OR TIED WITH WIRE TIE 8343 FIRMLY AGAINST UPPER FLOOR SUPPORT AS REQUIRED AT LEAST EVERY 700MM OR AS OTHERWISE SPECIFIED.
 1. ALL WIRE ROUTED ABOVE FLOOR TO BE CLAMPED WITH CLAMP 10495 AND SCREW G67-10-12B OR TIED WITH WIRE TIE 8343 AS REQUIRED AT LEAST EVERY 700MM OR AS OTHERWISE SPECIFIED.

- 76C ENTERTAINMENT CTR/EXT CSETTE
- 49X BED-QUEEN-BACKWALL
- 29F A/C ROOF-TWO 13.500 BTU
- 265 CODES/STANDARDS-CSA/CMVSS
- 1D5 ENTERTAINMENT CTR-EXT-W/CD
- 144 REFRIGERATOR-DOUBLE DOOR
- 120 ELECTRICAL SYSTEM 30 AMP

FOR ELECTRICAL TORQUE SPECIFICATIONS SEE DWG NO. 128763-01-000

FOR DETAIL CALLOUTS SEE DWG NO. 130375-01-000

WIRING INSTL - BODY, 110V(R30CA)
 SHEET 7 OF 17
 134331



INSTALL LABEL ON FRONT PANEL BELOW BREAKERS BETWEEN MOUNTING HOLES

LABEL 95721-26-000

2. ALL CABLES SHALL BE COVERED WITH CONVOLUTE SLIT 41953-01-000 UNLESS OTHERWISE SPECIFIED, 600 LESS THAN CABLE LENGTH.

1. ALL GROUND WIRES TO BE COVERED WITH TUBING 8041-02-000.

- 265 CODES/STANDARDS-CSA/CMVSS
- 29F A/C ROOF-TWO 13,500 BTU
- 120 ELECTRICAL SYSTEM 30 AMP
- 09L SLIDEOUT ROOM-FRONT LEFT

FOR ELECTRICAL TORQUE SPECIFICATIONS SEE DWG NO. 128783-01-000

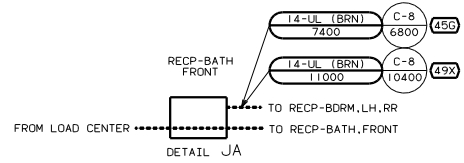
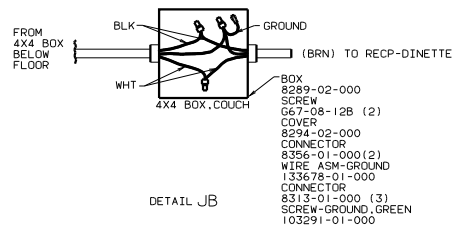
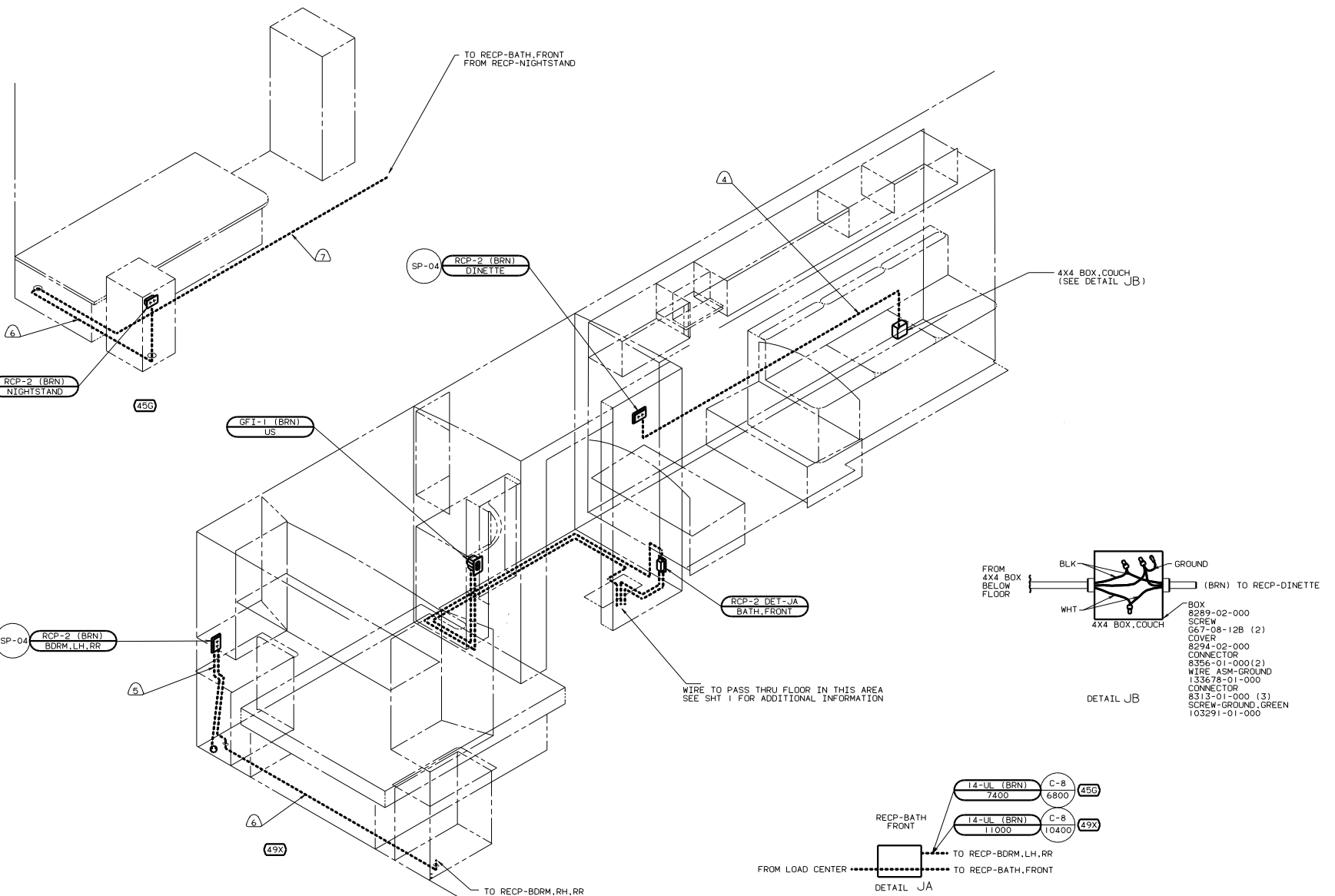
FOR DETAIL CALLOUTS SEE DWG NO. 130375-01-000

120 265 09L 29F 00 F33V

WIRING INSTL-BODY, 110V(LC30CA)

SHEET 8 OF 17

134331



- ⑦ WIRES ROUTED BELOW FLOOR.
- ⑥ ROUTE WIRES THRU FLOOR.
- ⑤ ROUTE WIRES THRU SIDEWALL.
- ④ WIRES IN SIDEWALL.

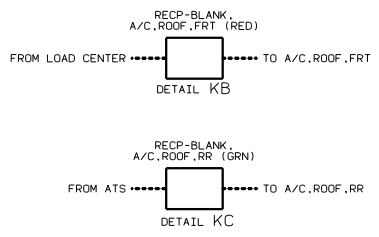
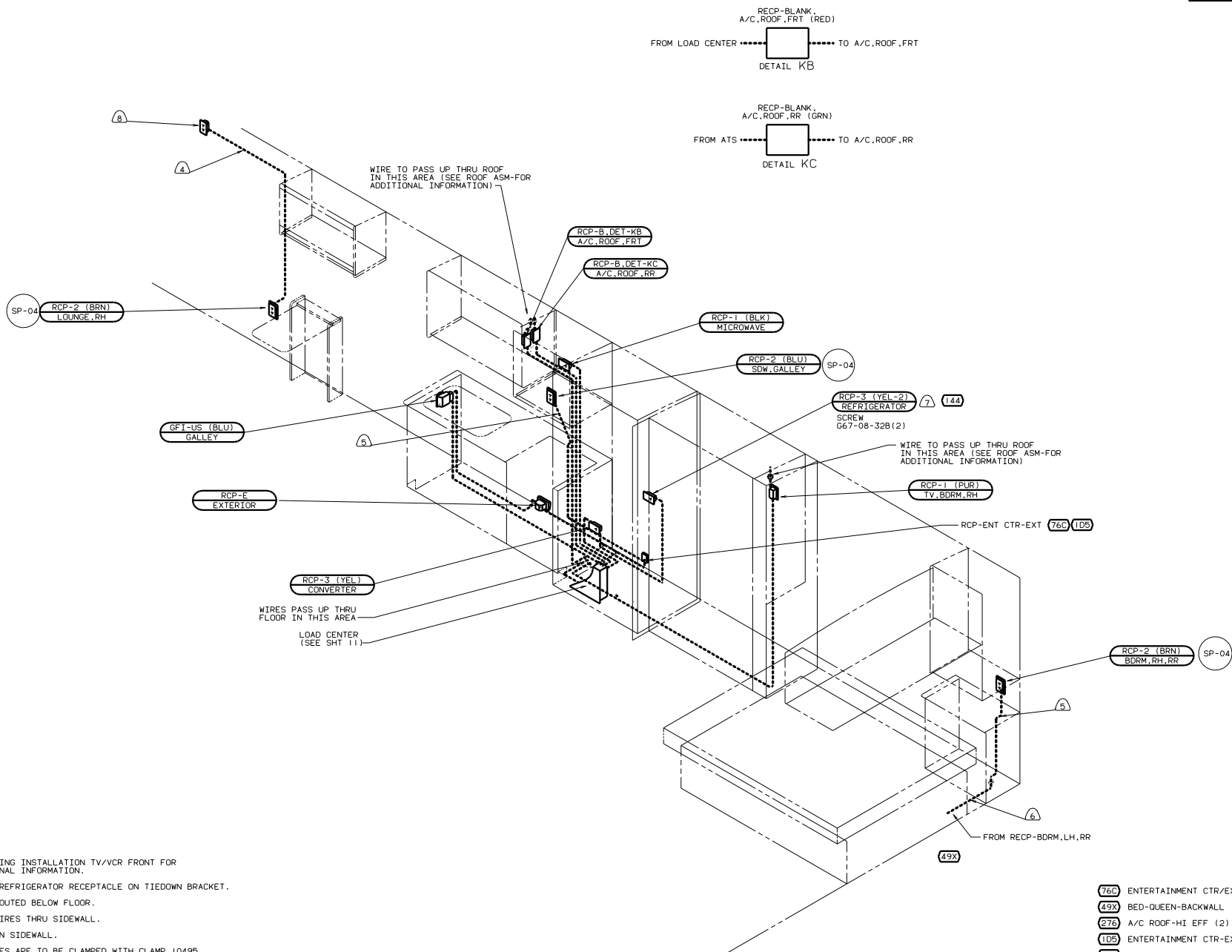
3. ALL WIRES ARE TO BE CLAMPED WITH CLAMP 10495 WITHIN 200 OF OUTLET BOXES, USE SCREW G67-10-12B.
2. ALL WIRE ROUTED BELOW FLOOR TO BE CLAMPED WITH CLAMP 10497 AND SCREW G39-08-10 OR TIED WITH WIRE TIE 8343 FIRMLY AGAINST UPPER FLOOR SUPPORT AS REQUIRED AT LEAST EVERY 700MM OR AS OTHERWISE SPECIFIED.
1. ALL WIRE ROUTED ABOVE FLOOR TO BE CLAMPED WITH CLAMP 10495 AND SCREW G67-10-12B OR TIED WITH WIRE TIE 8343 AS REQUIRED AT LEAST EVERY 700MM OR AS OTHERWISE SPECIFIED.

- ④9X BED-QUEEN-BACKWALL
- ④5G BED-TWINS
- ②76 A/C ROOF-HI EFF (2) W/EMS
- ①B1 CODES STANDARDS/USA
- ①2D ELECTRICAL SYSTEM 30 AMP
- ①9L SLIDEOUT ROOM-FRONT LEFT

FOR ELECTRICAL TORQUE SPECIFICATIONS SEE DWG NO 128783-01-000

FOR ELECTRICAL CALLOUTS SEE DWG NO 121339-01-000

WIRING INSTL - BODY 110V (130US)
 SHEET 9 OF 17
 134331



- 8 SEE WIRING INSTALLATION TV/VCR FRONT FOR ADDITIONAL INFORMATION.
- 7 LOCATE REFRIGERATOR RECEPTACLE ON TIEDOWN BRACKET.
- 6 WIRES ROUTED BELOW FLOOR.
- 5 ROUTE WIRES THRU SIDEWALL.
- 4 WIRES IN SIDEWALL.
3. ALL WIRES ARE TO BE CLAMPED WITH CLAMP 10495 WITHIN 200 OF OUTLET BOXES, USE SCREW G67-10-12B.
2. ALL WIRE ROUTED BELOW FLOOR TO BE CLAMPED WITH CLAMP 10497 AND SCREW G39-08-10 OR TIED WITH WIRE TIE 8343 FIRMLY AGAINST UPPER FLOOR SUPPORT AS REQUIRED AT LEAST EVERY 700MM OR AS OTHERWISE SPECIFIED.
1. ALL WIRE ROUTED ABOVE FLOOR TO BE CLAMPED WITH CLAMP 10495 AND SCREW G67-10-12B OR TIED WITH WIRE TIE 8343 AS REQUIRED AT LEAST EVERY 700MM OR AS OTHERWISE SPECIFIED.

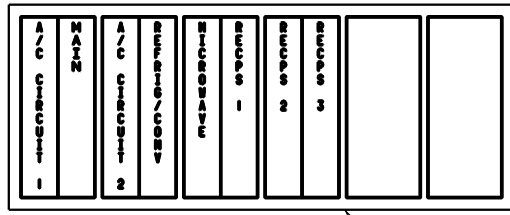
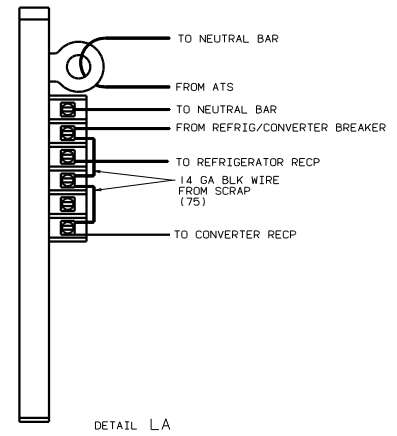
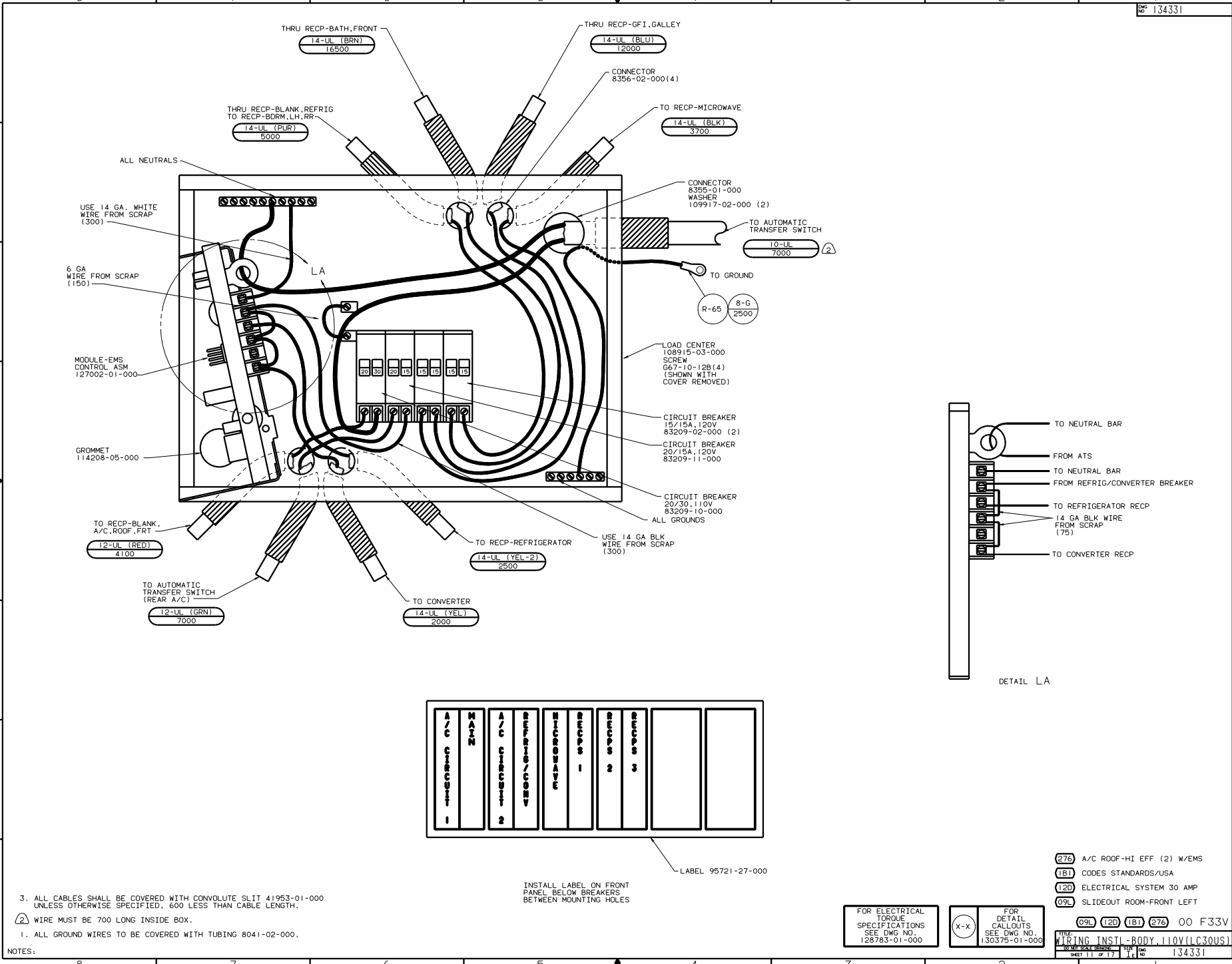
NOTES:

- 76C ENTERTAINMENT CTR/EXT CSETTE
- 49X BED-QUEEN-BACKWALL
- 276 A/C ROOF-HI EFF (2) W/EMS
- 1D5 ENTERTAINMENT CTR-EXT-W/CD
- 1B1 CODES STANDARDS/USA
- 144 REFRIGERATOR-DOUBLE DOOR
- 12D ELECTRICAL SYSTEM 30 AMP

FOR ELECTRICAL TORQUE SPECIFICATIONS SEE DWG NO. 128783-01-000

FOR DETAIL CALLOUTS SEE DWG NO. 130375-01-000

WIRING INSTL - BODY, 110V (R30US)
 SHEET 10 OF 17
 134331



INSTALL LABEL ON FRONT PANEL BELOW BREAKERS BETWEEN MOUNTING HOLES
 LABEL 95721-27-000

3. ALL CABLES SHALL BE COVERED WITH CONVOLUTE SLIT 41953-01-000 UNLESS OTHERWISE SPECIFIED. 600 LESS THAN CABLE LENGTH.

2. WIRE MUST BE 700 LONG INSIDE BOX.

1. ALL GROUND WIRES TO BE COVERED WITH TUBING 8041-02-000.

NOTES:

- (276) A/C ROOF-HI EFF (2) W/EMS
- (1B1) CODES STANDARDS/USA
- (12D) ELECTRICAL SYSTEM 30 AMP
- (09L) SLIDEOUT ROOM-FRONT LEFT

FOR ELECTRICAL TORQUE SPECIFICATIONS SEE DWG NO. 128783-01-000

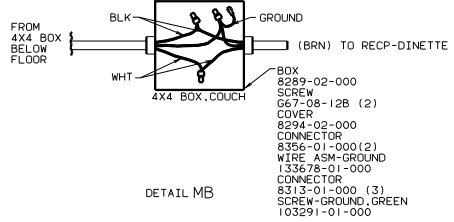
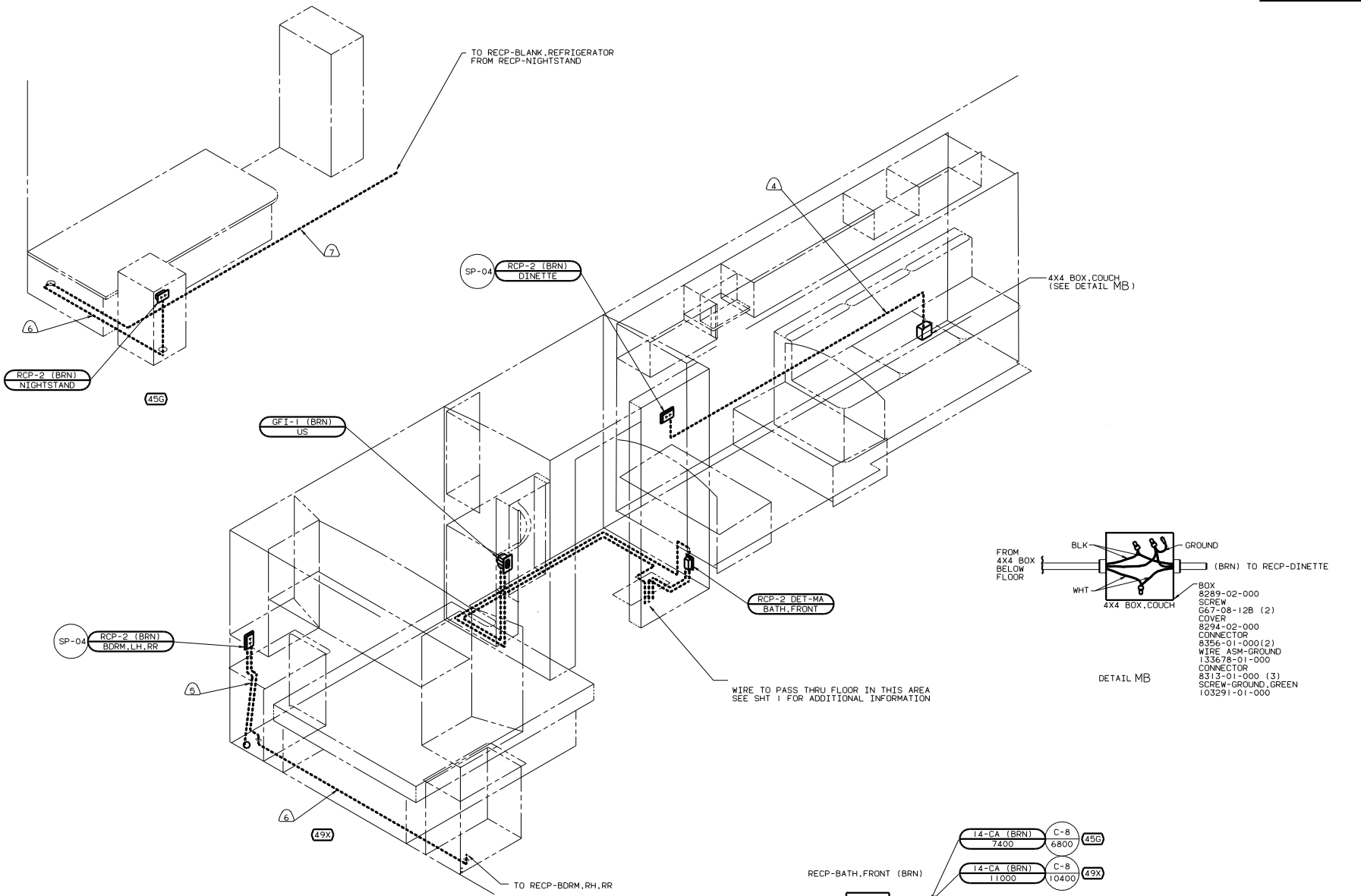
FOR DETAIL CALLOUTS SEE DWG NO. 130375-01-000

09L 12D 1B1 276 00 F33V

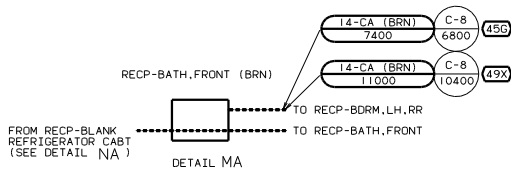
WIRING INSTL-BODY, 110V(LC30US)

SHEET 11 OF 17

134331



WIRE TO PASS THRU FLOOR IN THIS AREA
SEE SHT 1 FOR ADDITIONAL INFORMATION



- ⑦ WIRES ROUTED BELOW FLOOR.
- ⑥ ROUTE WIRES THRU FLOOR.
- ⑤ ROUTE WIRES THRU SIDEWALL.
- ④ WIRES IN SIDEWALL.

3. ALL WIRES ARE TO BE CLAMPED WITH CLAMP 10495 WITHIN 200 OF OUTLET BOXES, USE SCREW G67-10-12B.
2. ALL WIRE ROUTED BELOW FLOOR TO BE CLAMPED WITH CLAMP 10497 AND SCREW G39-08-10 OR TIED WITH WIRE TIE 8343 FIRMLY AGAINST UPPER FLOOR SUPPORT AS REQUIRED AT LEAST EVERY 700MM OR AS OTHERWISE SPECIFIED.
1. ALL WIRE ROUTED ABOVE FLOOR TO BE CLAMPED WITH CLAMP 10495 AND SCREW G67-10-12B OR TIED WITH WIRE TIE 8343 AS REQUIRED AT LEAST EVERY 700MM OR AS OTHERWISE SPECIFIED.

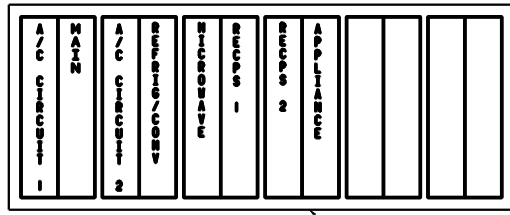
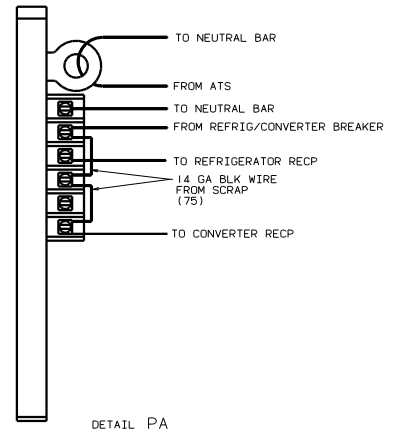
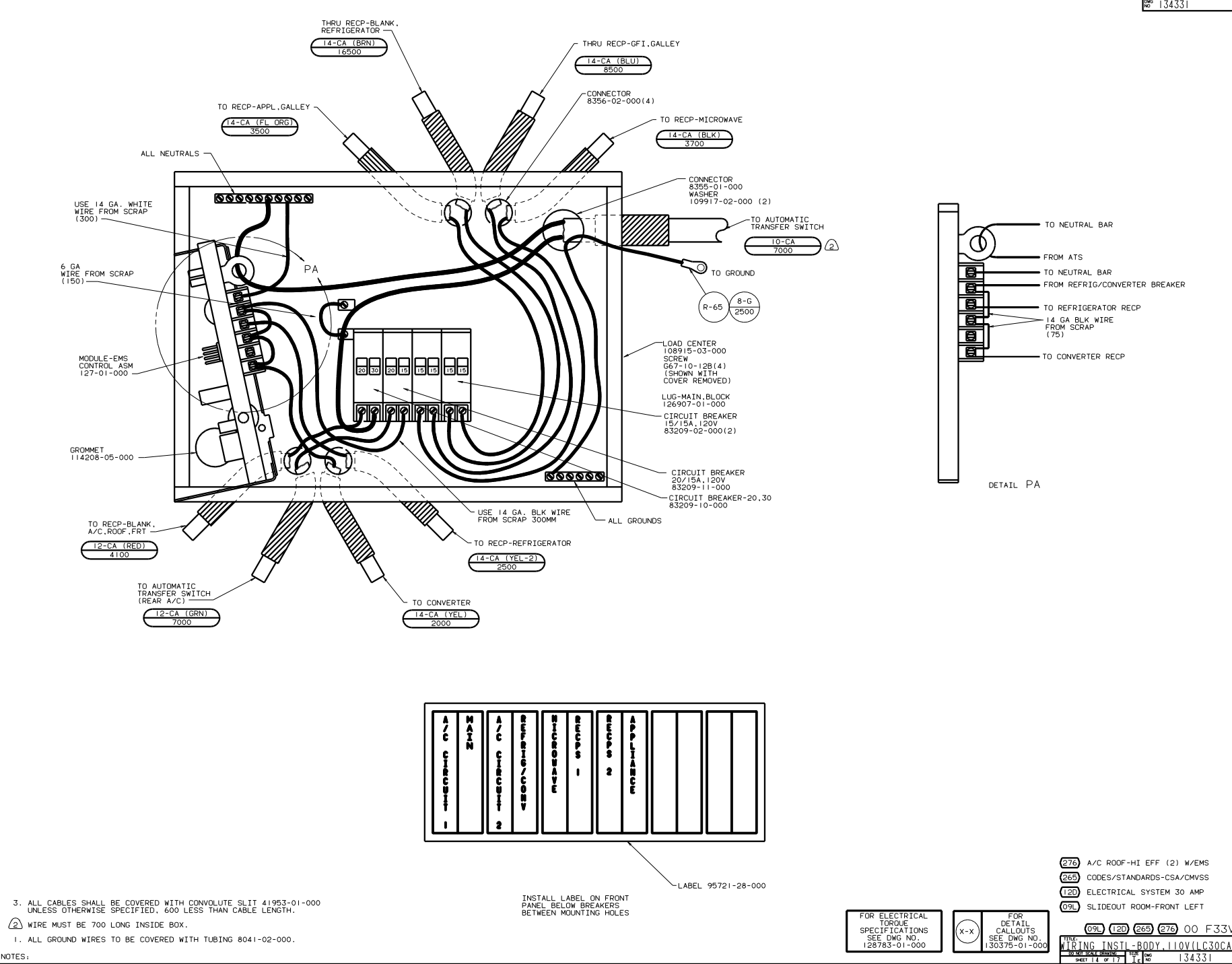
NOTES:

FOR ELECTRICAL TORQUE SPECIFICATIONS SEE DWG NO. 128763-01-000

FOR ELECTRICAL CALLOUTS SEE DWG NO. 121339-01-000

- ④9X BED-QUEEN-BACKWALL
- ④5G BED-TWINS
- ②76 A/C ROOF-HI EFF (2) W/EMS
- ②65 CODES/STANDARDS-CSA/CMVSS
- ①20 ELECTRICAL SYSTEM 30 AMP
- ①9L SLIDEOUT ROOM-FRONT LEFT

①9L ①20 ②65 ②76 00 F33V
 WIRING INSTL - BODY, 110V(130CA)
 SHEET 12 OF 17



LABEL 95721-28-000

3. ALL CABLES SHALL BE COVERED WITH CONVOLUTE SLIT 41953-01-000 UNLESS OTHERWISE SPECIFIED. 600 LESS THAN CABLE LENGTH.

2. WIRE MUST BE 700 LONG INSIDE BOX.

1. ALL GROUND WIRES TO BE COVERED WITH TUBING 8041-02-000.

INSTALL LABEL ON FRONT PANEL BELOW BREAKERS BETWEEN MOUNTING HOLES

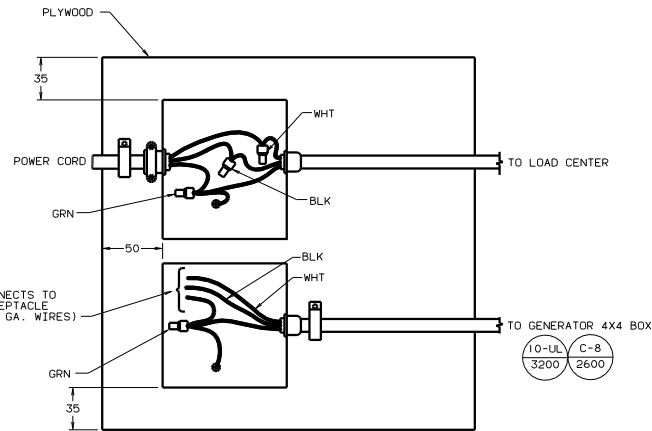
- 276 A/C ROOF-HI EFF (2) W/EMS
- 265 CODES/STANDARDS-CSA/CMVSS
- 120 ELECTRICAL SYSTEM 30 AMP
- 09L SLIDEOUT ROOM-FRONT LEFT

09L	120	265	276	00	F33V
WIRING INSTL-BODY,110V(LC30CA)					
SHEET 14 OF 17					

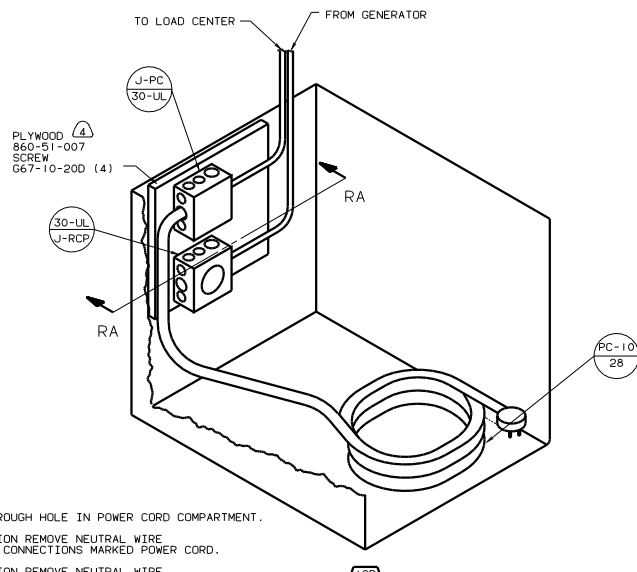
FOR ELECTRICAL TORQUE SPECIFICATIONS SEE DWG NO. 126763-01-000

FOR DETAIL CALLOUTS SEE DWG NO. 130375-01-000

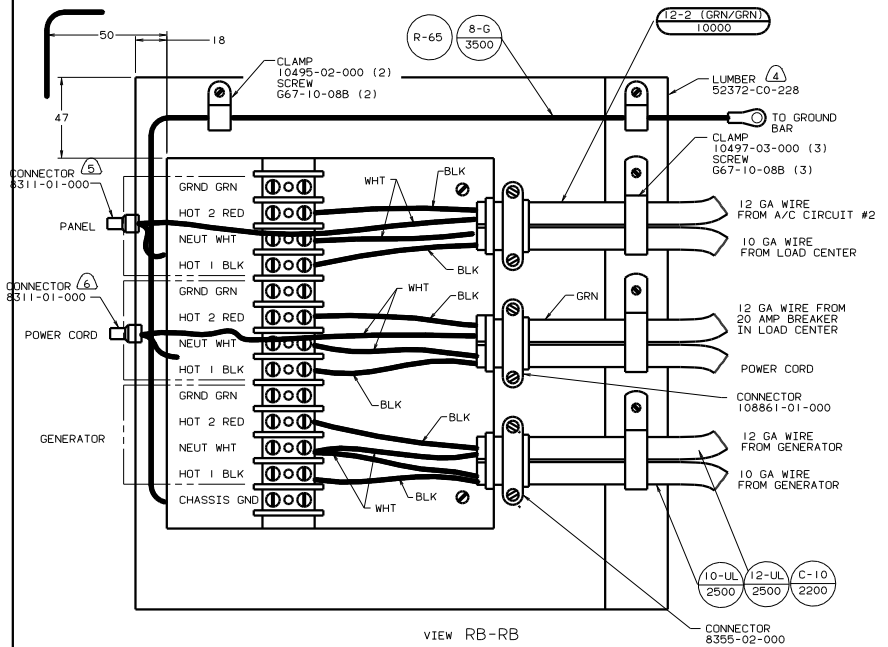
NOTES:



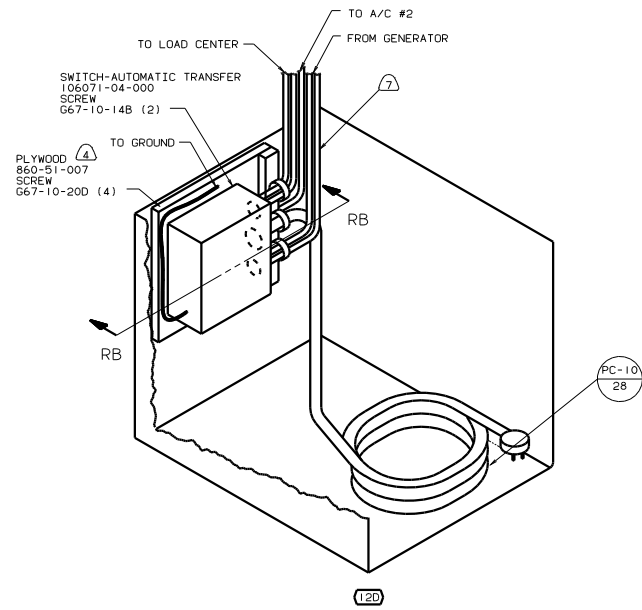
VIEW RA-RA
(SHOWN WITH COVERS REMOVED)



- (7) WIRES TO PASS THROUGH HOLE IN POWER CORD COMPARTMENT.
- (6) FOR THIS CONNECTION REMOVE NEUTRAL WIRE MARKED BLUE FROM CONNECTIONS MARKED POWER CORD.
- (5) FOR THIS CONNECTION REMOVE NEUTRAL WIRE MARKED BLUE FROM CONNECTIONS MARKED PANEL.
- (4) PAINT EXPOSED SURFACE BLACK WITH 106112-01-000
3. ALL 110V STRANDED WIRE W/O TERMINALS TO BE STRIPPED 10MM AND SOLDER DIPPED.
2. GROUND WIRES NOT SHOWN FOR CLARITY.
1. ALL WIRES TO BE CLAMPED WITH IN 200 OF BOX.
- NOTES:



VIEW RB-RB



- (29F) A/C ROOF-TWO 13,500 BTU
- (27E) A/C ROOF-HI EFF (2) W/EMS
- (1B1) CODES STANDARDS/USA
- (12D) ELECTRICAL SYSTEM 30 AMP

FOR ELECTRICAL TORQUE SPECIFICATIONS SEE DWG NO. 128783-01-000

(X-X)

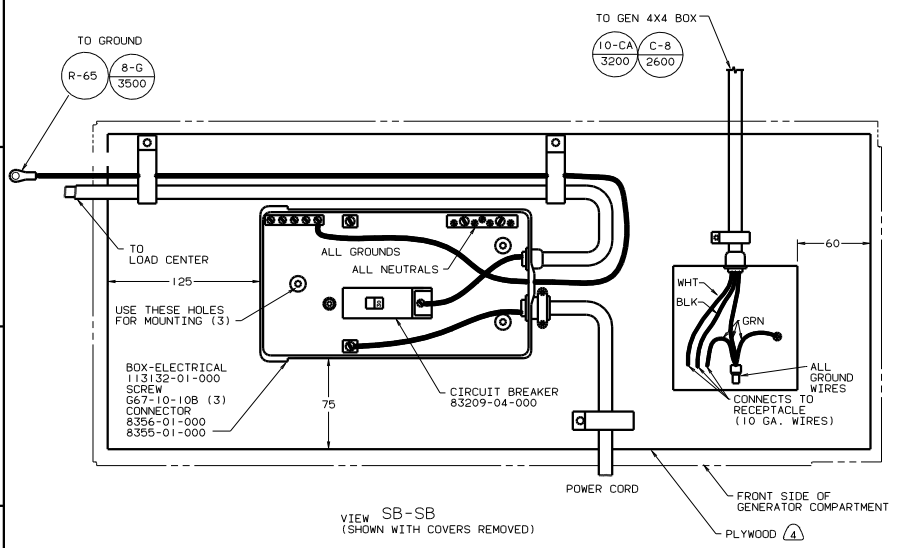
FOR ELECTRICAL CALLOUTS SEE DWG NO. 121339-01-000

120 (1B1) 00 F33V

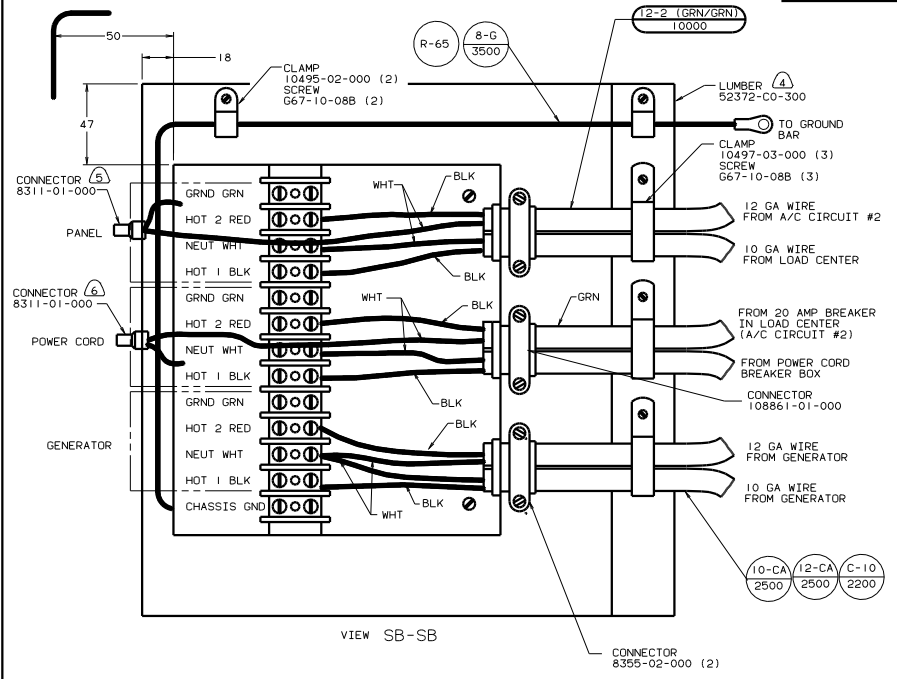
WIRING INSTL - BODY, 110V (PC/US)

SHEET 15 OF 17

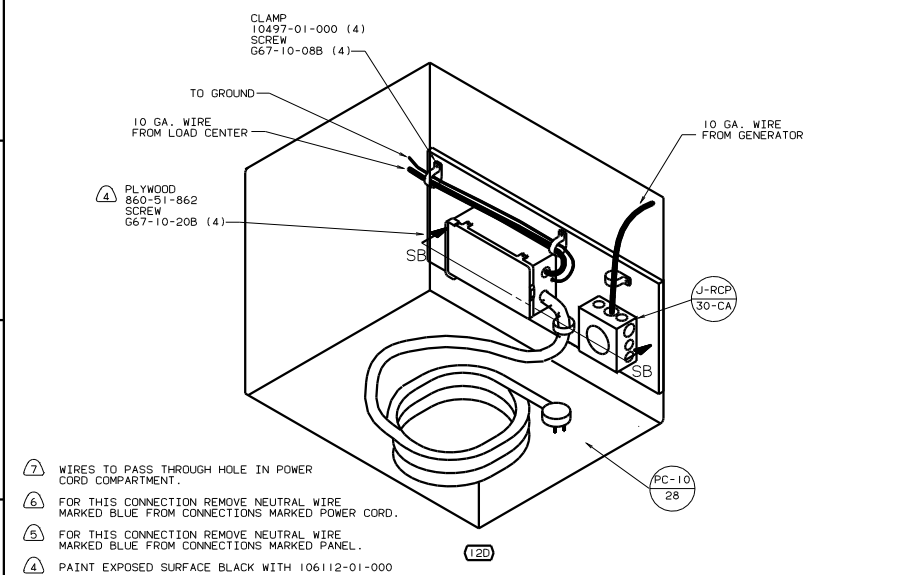
134331



VIEW SB-SB
(SHOWN WITH COVERS REMOVED)

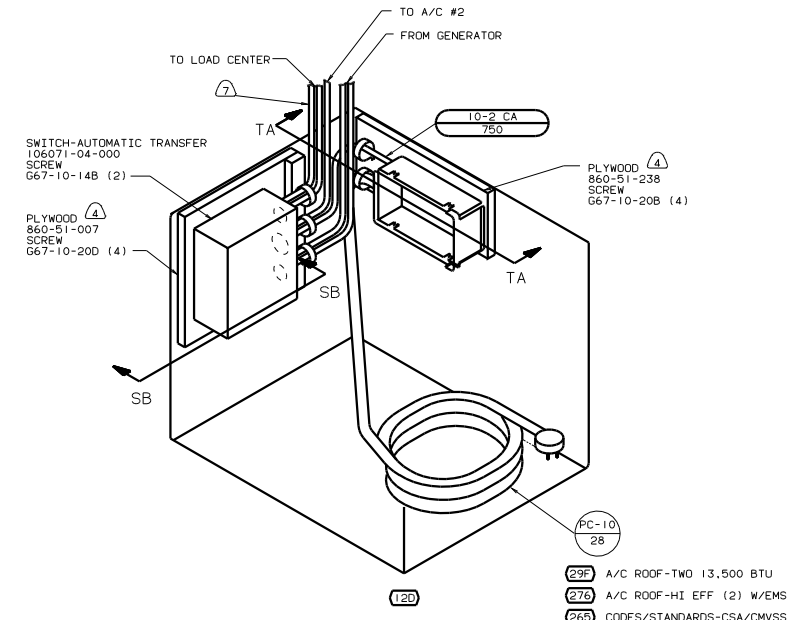


VIEW SB-SB



- ⑦ WIRES TO PASS THROUGH HOLE IN POWER CORD COMPARTMENT.
- ⑥ FOR THIS CONNECTION REMOVE NEUTRAL WIRE MARKED BLUE FROM CONNECTIONS MARKED POWER CORD.
- ⑤ FOR THIS CONNECTION REMOVE NEUTRAL WIRE MARKED BLUE FROM CONNECTIONS MARKED PANEL.
- ④ PAINT EXPOSED SURFACE BLACK WITH 106112-01-000
- 3. ALL 110V STRANDED WIRE W/O TERMINALS TO BE STRIPPED 10MM AND SOLDER DIPPED.
- 2. GROUND WIRES NOT SHOWN FOR CLARITY.
- 1. ALL WIRES TO BE CLAMPED WITH IN 200 OF BOX.

NOTES:

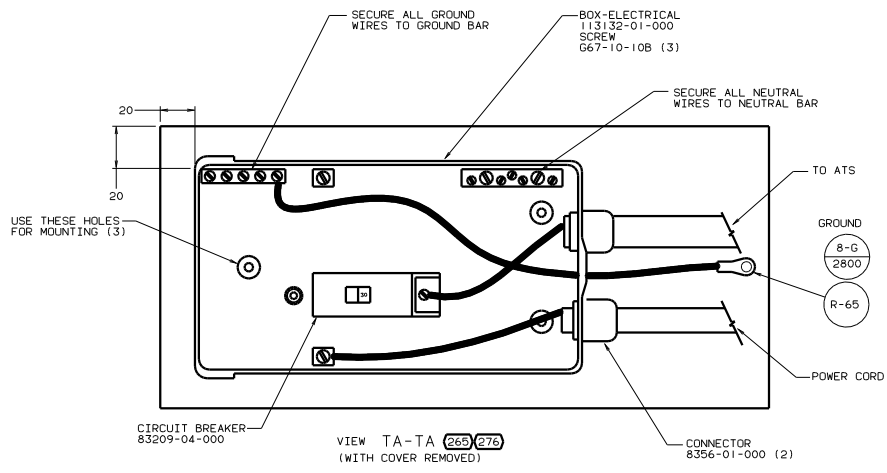


VIEW SB-SB

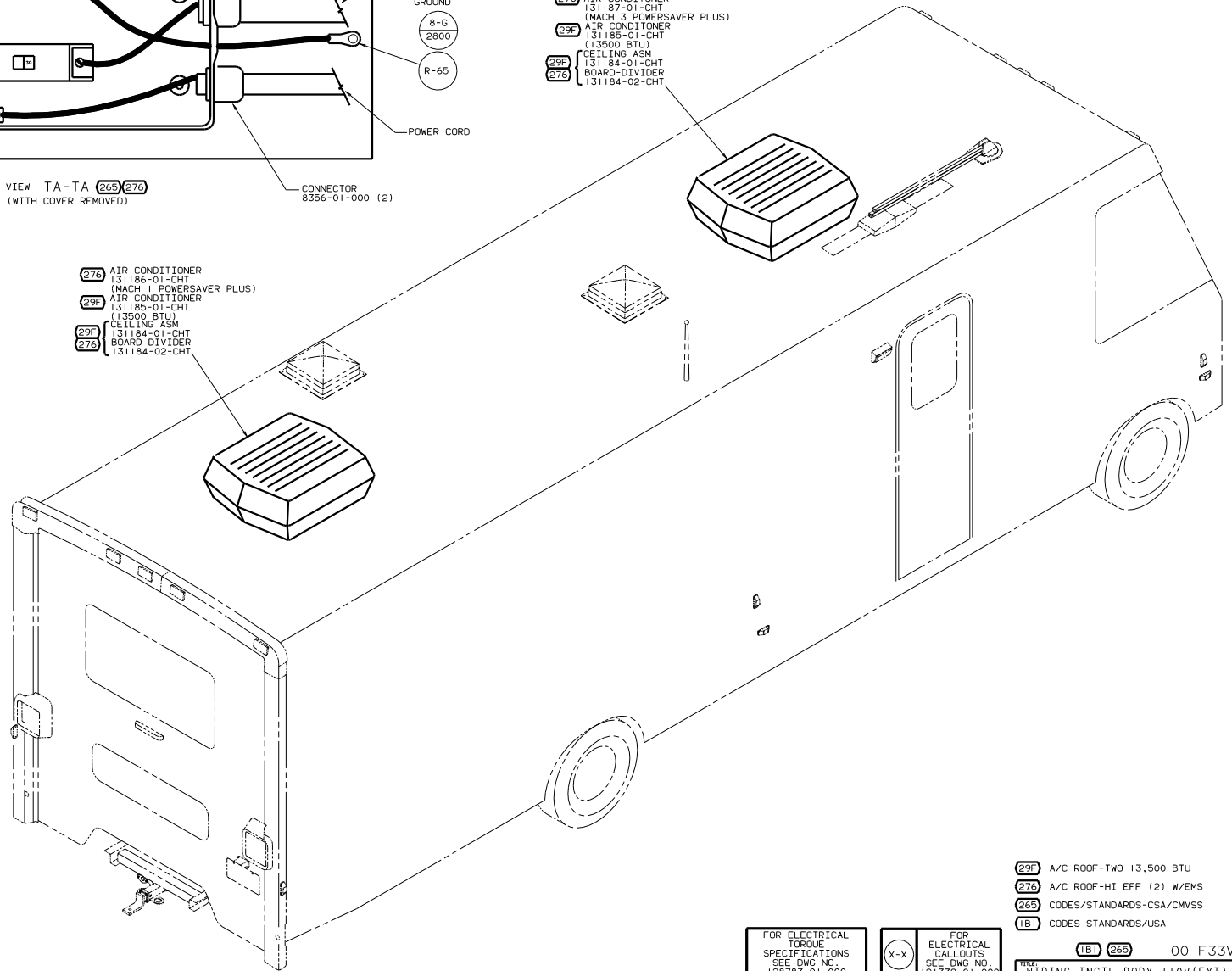
FOR ELECTRICAL TORQUE SPECIFICATIONS SEE DWG NO. 128783-01-000

FOR ELECTRICAL CALLOUTS SEE DWG NO. 121339-01-000

- ②9F A/C ROOF-TWO 13,500 BTU
- ②76 A/C ROOF-HI EFF (2) W/EMS
- ②65 CODES/STANDARDS-CSA/CMVSS
- ①20 ELECTRICAL SYSTEM 30 AMP



- (276) AIR CONDITIONER 131187-01-CHT (MACH 3 POWERSAVER PLUS)
- (29F) AIR CONDITIONER 131185-01-CHT (13500 BTU)
- (29F) CEILING ASM 131184-01-CHT
- (276) BOARD-DIVIDER 131184-02-CHT



- (276) AIR CONDITIONER 131186-01-CHT (MACH 1 POWERSAVER PLUS)
- (29F) AIR CONDITIONER 131185-01-CHT (13500 BTU)
- (29F) CEILING ASM 131184-01-CHT
- (276) BOARD-DIVIDER 131184-02-CHT

- (29F) A/C ROOF-TWO 13,500 BTU
- (276) A/C ROOF-HI EFF (2) W/EMS
- (265) CODES/STANDARDS-CSA/CMVSS
- (1B1) CODES STANDARDS/USA

FOR ELECTRICAL SPECIFICATIONS SEE DWG NO. 128763-01-000

FOR ELECTRICAL CALLOUTS SEE DWG NO. 121339-01-000

FILE:	134331	REV:	1.0
WIRING INSTL-BODY, L10V(EXT)		00 F33V	
SHEET 17 OF 17		134331	