



**DANGER**

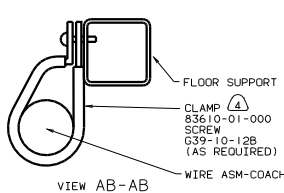
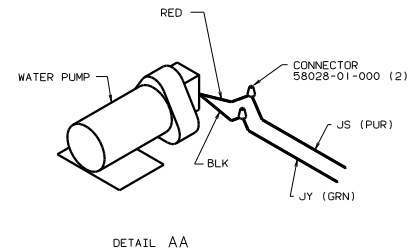
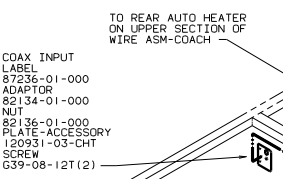
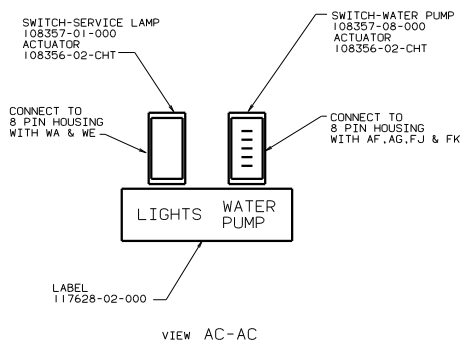
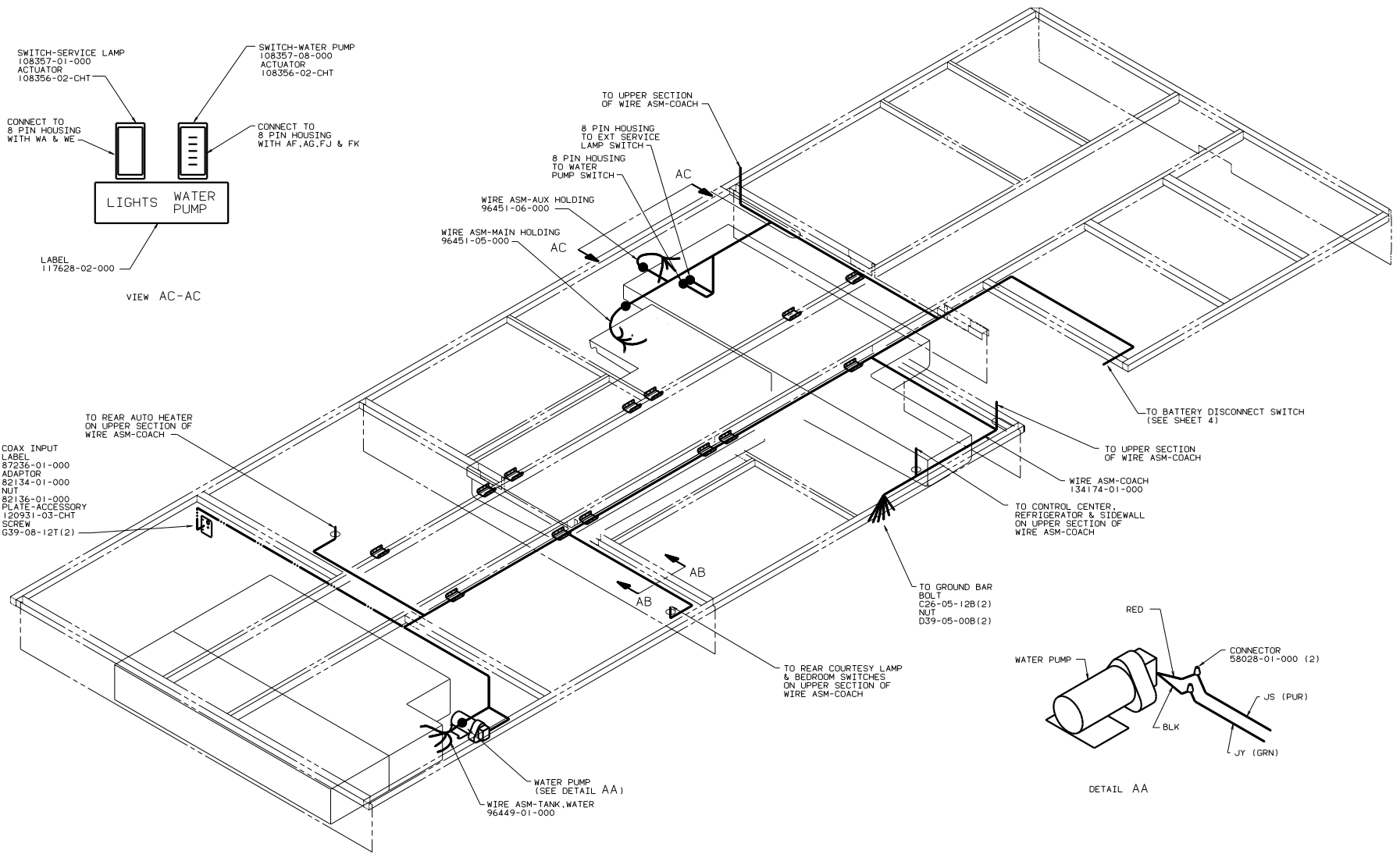
**Danger of electrical shock, burns or death.** Always remove all power sources before attempting any repair, service or diagnostic work. Power can be present from shore power, generator, inverter or battery. All power sources must be disabled and secured before performing any service.



**CAUTION**

If you lack the skills, tools or equipment to perform diagnostic or repair work leave such work to an authorized Winnebago Industries dealer or other qualified shop.

DWG	MODEL
134181-01	(WIN)
134181-02	(LTA)



- NOTES:
- SPACE CLAMPS EVERY 600 ABOVE STORAGE AREAS.
  - WIRES THAT REST ON WIRE TRAYS ARE TO BE TIED DOWN WITH WIRE TIE 8343-02-000.
  - CLAMP TO FLOOR SUPPORT TUBES AS NECESSARY WITH CLAMP 10497-01-000
  - ALL WIRE TO BE CLAMPED WITH CLAMP 10495-01-000 OR CLIP 80734-01-000 EVERY 700, USE SCREW G67-10-12B UNLESS OTHERWISE SPECIFIED.

(265) CODES/STANDARDS-CSA/CMVSS  
 (1B1) CODES/STANDARDS USA  
 (1B1) (265)

FOR ELECTRICAL TORQUE SPECIFICATIONS SEE DWG NO. 128763-01-000

(X-X)

FOR ELECTRICAL CALLOUTS SEE DWG NO. 121339-01-000

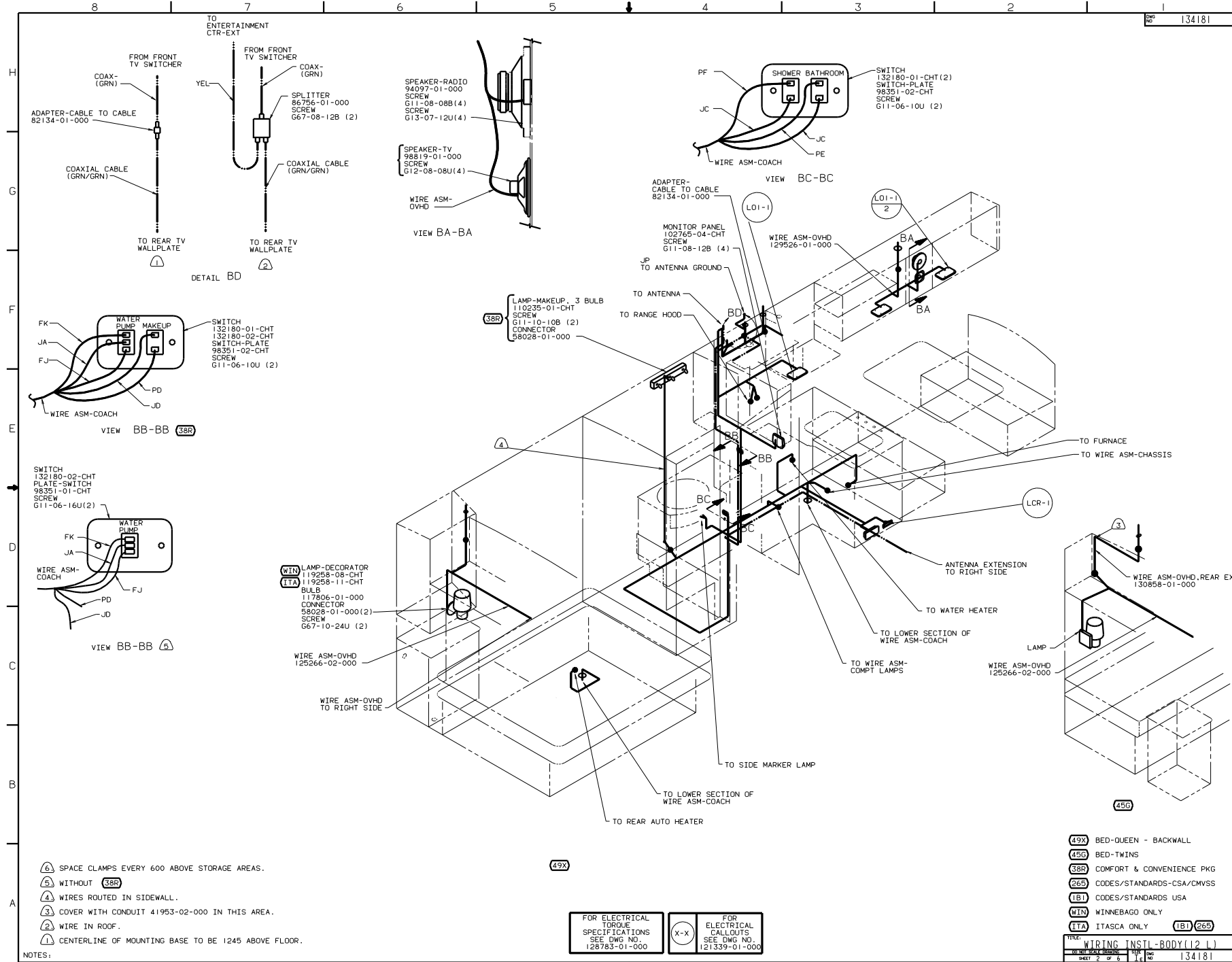
WINNEBAGO OO F30A

DATE	UNDESIGNED TOLERANCES ARE:	MATERIAL
DATE	WHOLE DIM (IN)	
DATE	ONE-PLACE (IN.XX)	
DATE	TWO-PLACE (IN.XXX)	
DATE	MILS	
DATE	THIRD WHOLE DIMENSION	

LANE # \_\_\_\_\_ TITLE: WIRING INSTL-BODY (12V BF)

REV # \_\_\_\_\_ SCALE: \_\_\_\_\_ DRAWING NO. 134181

ALL DIMENSIONS ARE IN MILLIMETERS SHEET 1 OF 5

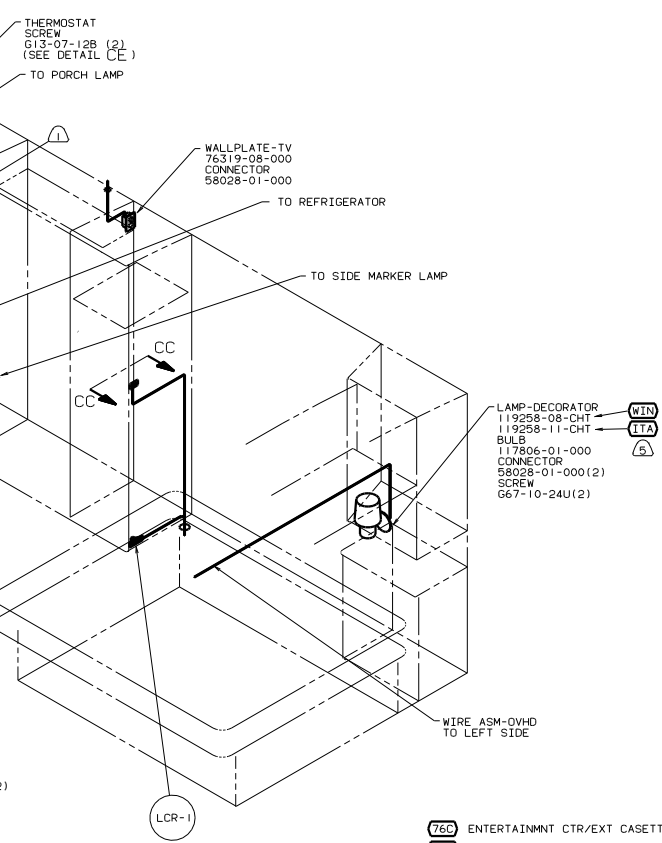
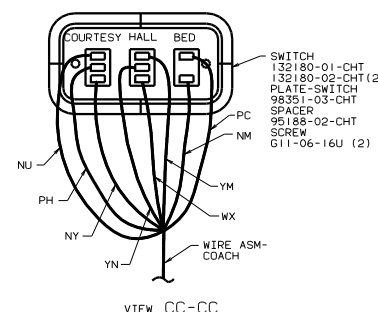
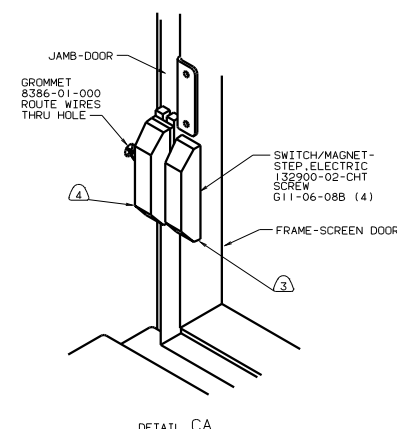
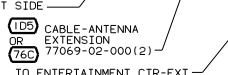
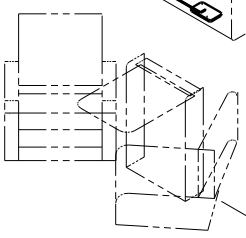
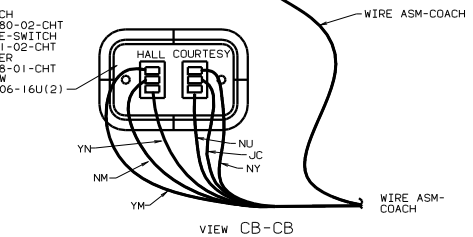
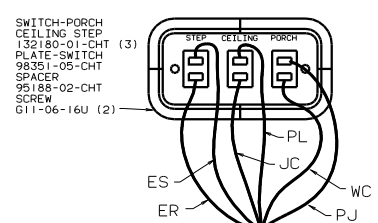
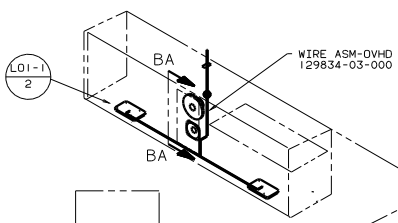
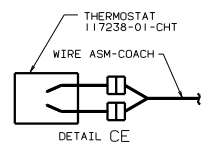
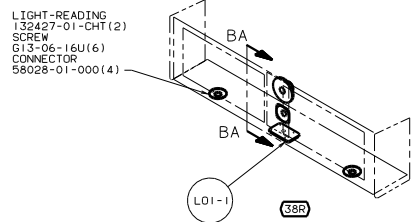


- ① SPACE CLAMPS EVERY 600 ABOVE STORAGE AREAS.
- ② WITHOUT (38R)
- ③ WIRES ROUTED IN SIDEWALL.
- ④ COVER WITH CONDUIT 41953-02-000 IN THIS AREA.
- ⑤ WIRE IN ROOF.
- ⑥ CENTERLINE OF MOUNTING BASE TO BE 1245 ABOVE FLOOR.

(49X)

FOR ELECTRICAL TORQUE SPECIFICATIONS SEE DWG NO. 128783-01-000	X-X	FOR ELECTRICAL CALLOUTS SEE DWG NO. 121339-01-000
--	-----	---

- (49X) BED-QUEEN - BACKWALL
- (45G) BED-TWINS
- (38R) COMFORT & CONVENIENCE PKG
- (265) CODES/STANDARDS-CSA/CMVSS
- (IB1) CODES/STANDARDS USA
- (WIN) WINNEBAGO ONLY
- (ITA) ITASCA ONLY
- (IB1) (265)



- 5 CENTERLINE OF MOUNTING BASE TO BE 1245 ABOVE FLOOR.
- 4 MOUNT SWITCH AND SPACER TO BLOCK IN JAMB. ADJUST HEIGHT TO MATCH MAGNET.
- 3 MOUNT MAGNET USING PILOT HOLES IN SCREEN DOOR FRAME. MOUNT WITH MAGNET TOWRD SWITCH.
- 2 WIRE IN ROOF.
- 1 WIRE IN SIDEWALL.

- 76C ENTERTAINMNT CTR/EXT CASSETTE
- 38R COMFORT & CONVENIENCE PKG
- 265 CODES/STANDARDS-CSA/CMWSS
- 1D5 ENTERTAINMENT CENTR/EXT W/CD
- 1B1 CODES/STANDARDS USA
- WIN WINNEBAGO ONLY
- ITA ITASCA ONLY

FOR ELECTRICAL TORQUE SPECIFICATIONS SEE DWG NO. 128783-01-000

FOR ELECTRICAL CALLOUTS SEE DWG NO. 121339-01-000

00 F30A  
 TITLE: WIRING INSTL-BODY(12 R)  
 SHEET 3 OF 6  
 134181

LF2N1  
6

LSH-1

LF1-1

SWITCH-BATTERY, DISC  
108357-06-000  
ACTUATOR-SWITCH  
108356-11-CHT  
PLATE-SWITCH  
98351-07-CHT  
SCREW  
G11-06-16U (2)

LAMP-COMPARTMENT  
86280-01-CHT  
SCREW  
G11-08-12B (2)  
CONNECTOR  
58028-01-000 (2)

UPPER FLOOR  
SUPPORT FRAME

STEP BOX

CHANNEL-HAT  
135167-01-CHT  
SCREW  
G39-10-02B(2)

VIEW AD-AD  
(FRONT VIEW)

VIEW AD-AD

FOR ELECTRICAL  
TORQUE  
SPECIFICATIONS  
SEE DWG NO.  
128783-01-000

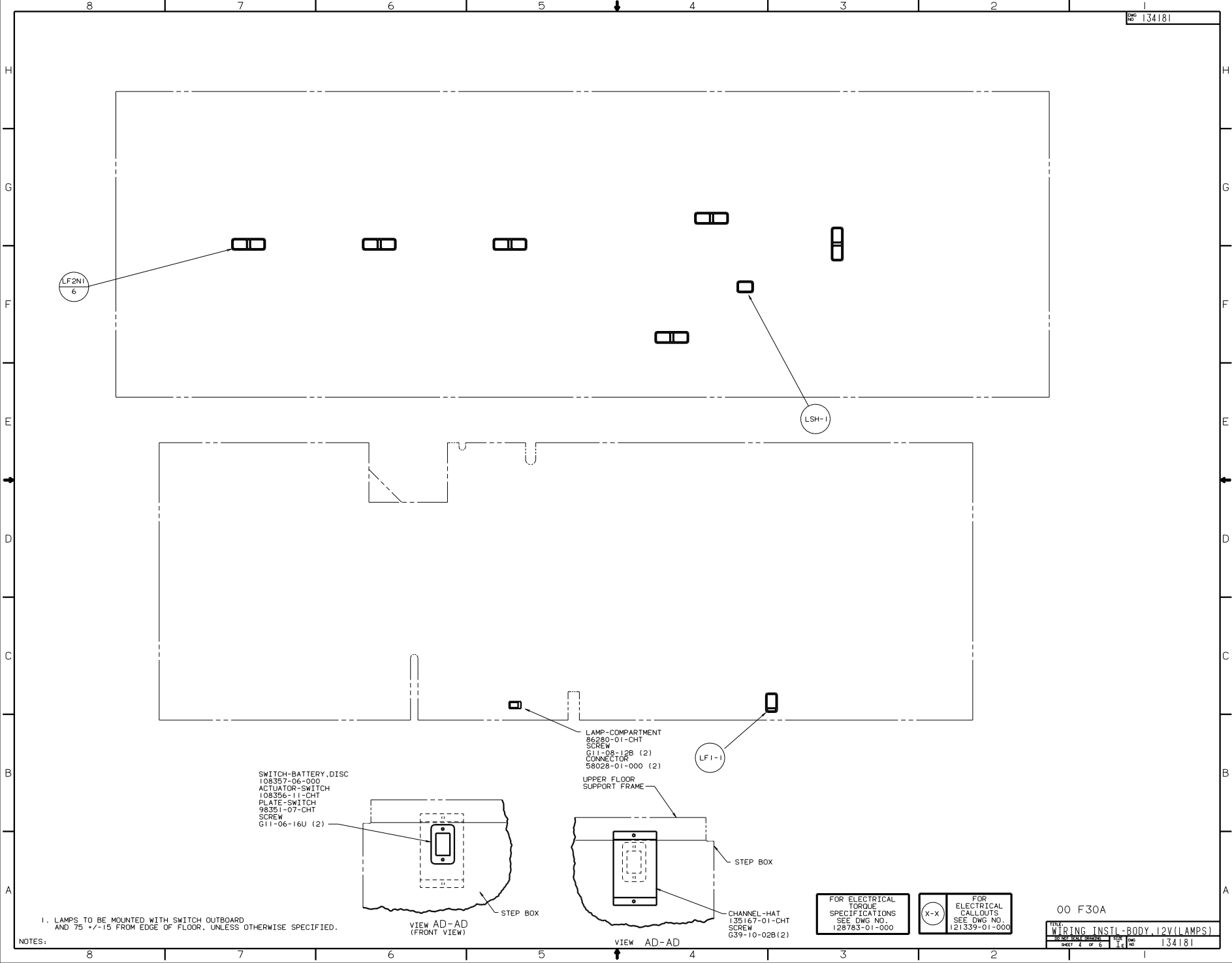
FOR  
ELECTRICAL  
CALLOUTS  
SEE DWG NO.  
121339-01-000

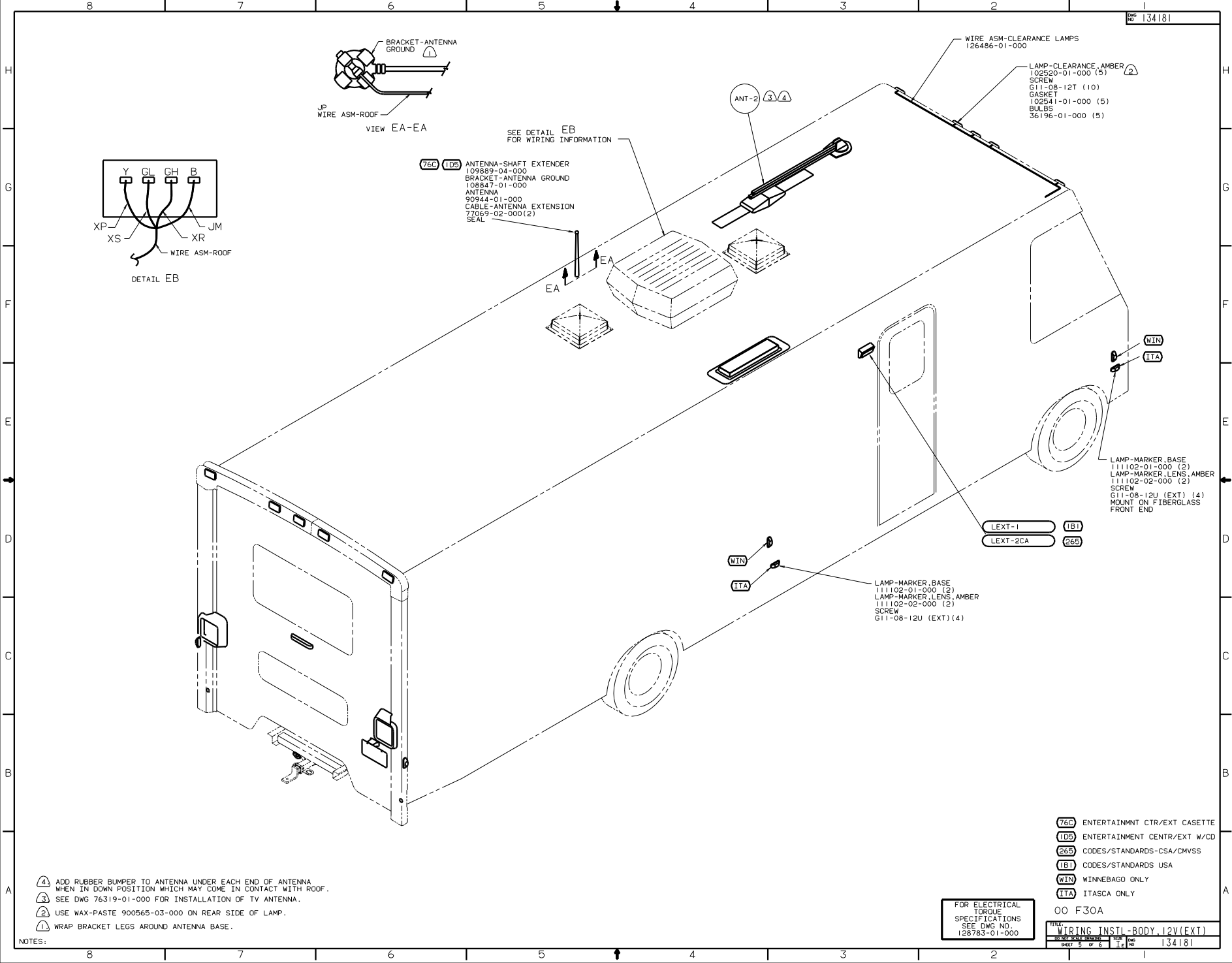
00 F30A

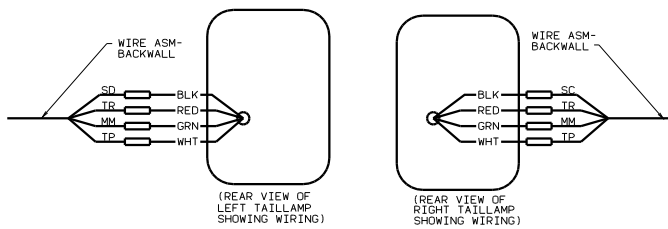
FILE: WIRING INSTL-BODY.12V(LAMPS)  
SHEET 4 OF 6

1. LAMPS TO BE MOUNTED WITH SWITCH OUTBOARD  
AND 75 +/-15 FROM EDGE OF FLOOR, UNLESS OTHERWISE SPECIFIED.

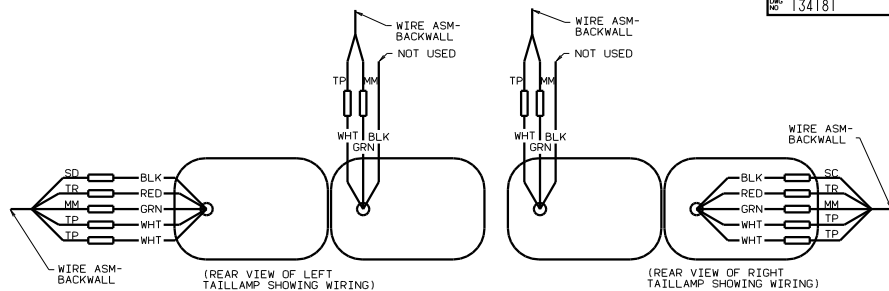
NOTES:



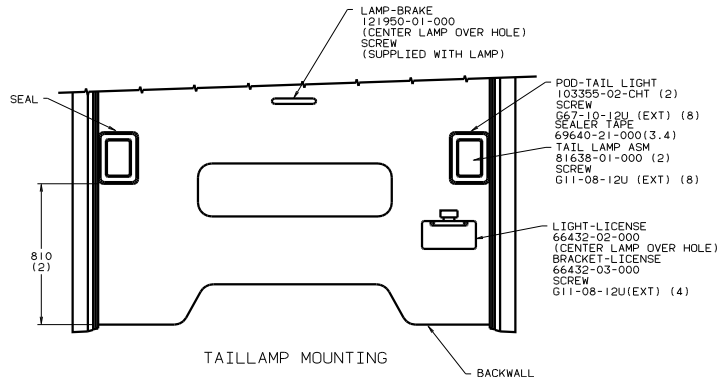




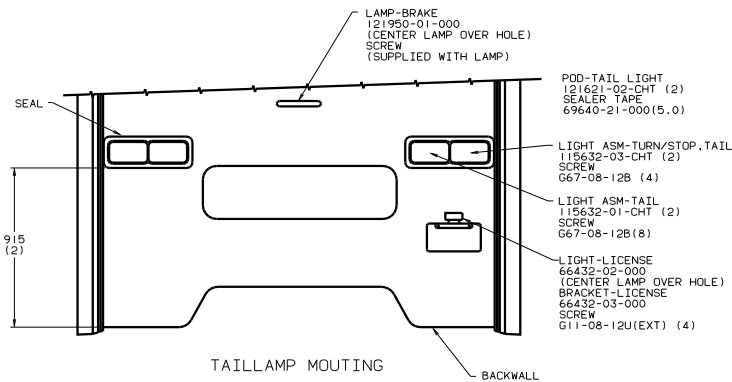
TAILLAMP WIRING



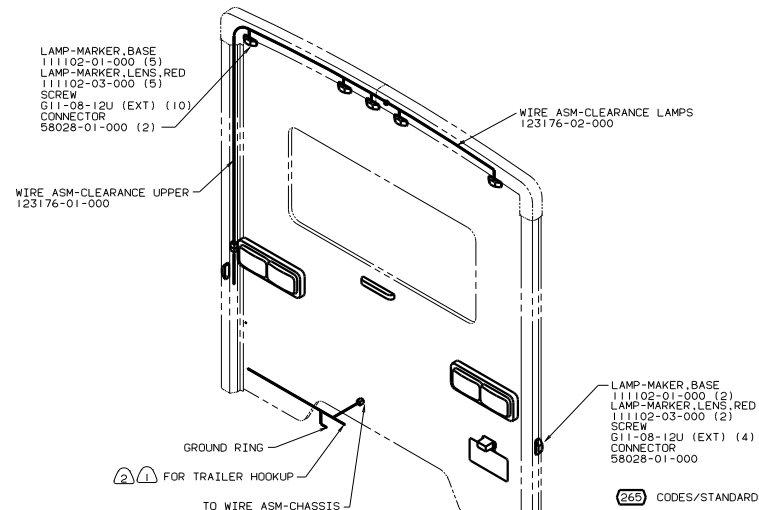
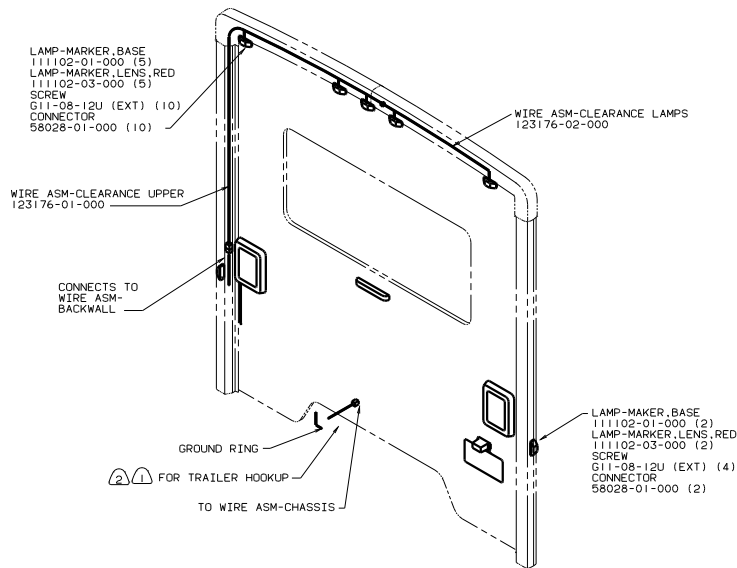
TAILLAMP WIRING



TAILLAMP MOUNTING



TAILLAMP MOUNTING



② CONNECTOR-PLUG, TRAILER 113589-01-000 TO BE SUPPLIED LOOSE IN COACH WITH TRAILER TOWING PACKAGE.

① TAPE BRANCH BACK ALONG WIRE ASM WITH TAPE 8363-01-000.

NOTES:

WIN

ETA

FOR ELECTRICAL  
TORQUE  
SPECIFICATIONS  
SEE DWG NO.  
128783-01-000

- (265) CODES/STANDARDS-CSA/CMVSS
- (TBI) CODES/STANDARDS USA
- (WIN) WINNEBAGO ONLY
- (ETA) ITASCA ONLY

00 F30A (265) (TBI)  
WIRING INSTL - BODY, 12V (EXT)  
134181