



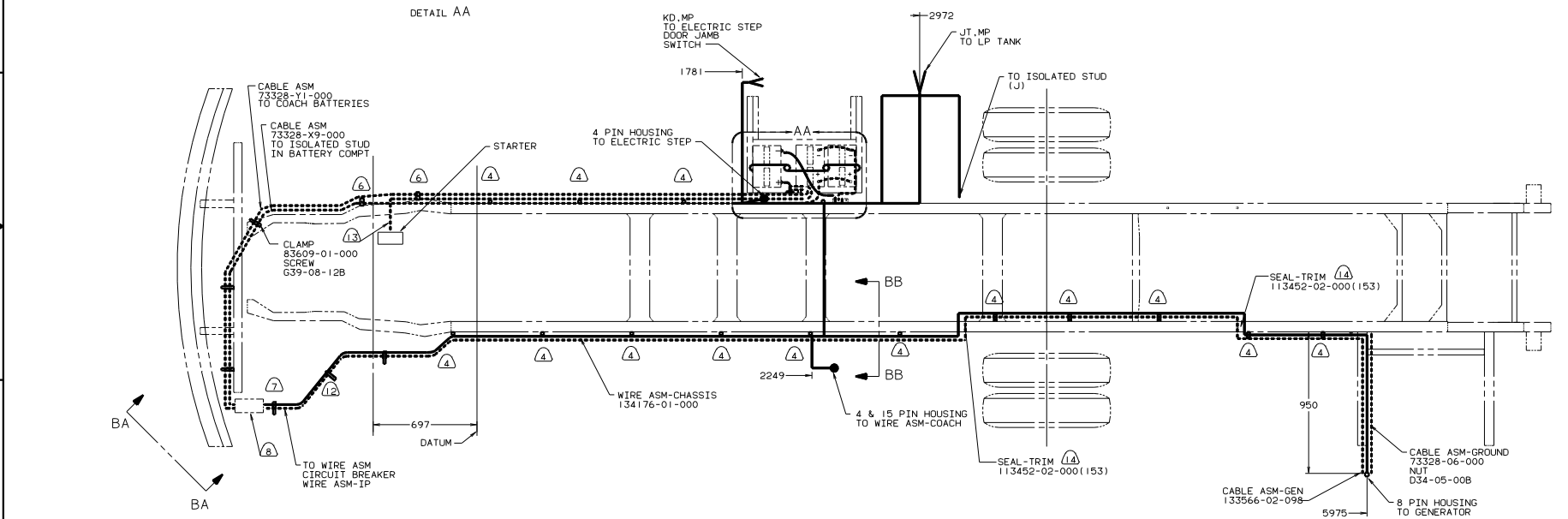
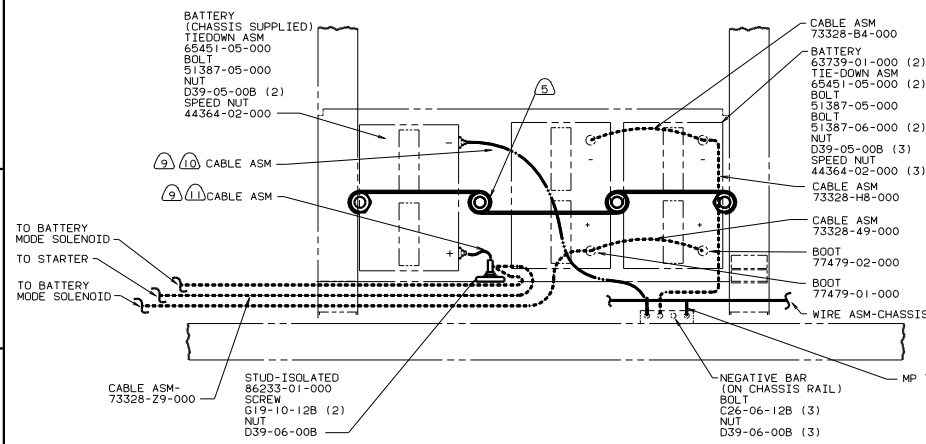
DANGER

Danger of electrical shock, burns or death. Always remove all power sources before attempting any repair, service or diagnostic work. Power can be present from shore power, generator, inverter or battery. All power sources must be disabled and secured before performing any service.



CAUTION

If you lack the skills, tools or equipment to perform diagnostic or repair work leave such work to an authorized Winnebago Industries dealer or other qualified shop.



- ⑭ COVER SHARP EDGES WHERE WIRE CROSSES FRAME RAIL.
 - ⑬ BATTERY CABLES MUST BE INSTALLED TO STARTER MOTOR BEFORE ENGINE WIRING HARNESS AND ROUTED IN SUCH A MANNER AS TO PREVENT AND POSSIBLE DEGRADATION FROM THE EXHAUST SYSTEM.
 - ⑫ COVER WITH CONDUIT 41953-09,-10-11-000 AS REQUIRED
 - ⑪ TRIM CABLE TO 400MM, ADD TERMINAL 8348-01-000.
 - ⑩ TRIM CABLE TO 800MM, ADD TERMINAL 8348-01-000.
 - ⑨ SUPPLIED WITH CHASSIS.
 - ⑧ SEE WIRING INSTL-FRONT END FOR ADDITIONAL INFORMATION.
 - ⑦ CLAMP 83610-01-000, SCREW G11-10-16B.
 - ⑥ WIRE TIE 116673-01-000.
 - ⑤ USE TWO NUTS HERE TO ACCOUNT FOR BATTERY HEIGHT DIFFERENCE.
 - ④ WIRE TIE 8343-02-000. FASTEN AT LEAST ONCE EVERY 600MM.
3. ALL DIMENSIONS ARE FROM DATUM UNLESS OTHERWISE SPECIFIED.
2. SECURE CONDUIT 41953-01-000, 41953-02-000 AND 41953-03-000 OVER ALL WIRES IN CONTACT WITH SHARP EDGES.
1. LEGEND: — WINNEBAGO, - - - - CABLE, - - - - CHASSIS SUPPLIED.

- ②65 CODES/STANDARDS-CSA/CMVSS
- ①PF WORKHORSE CH. 14,800LB. GVWR
- ①B1 CODES/STANDARDS USA

FOR ELECTRICAL TORQUE SPECIFICATIONS SEE DWG NO. 128783-01-000

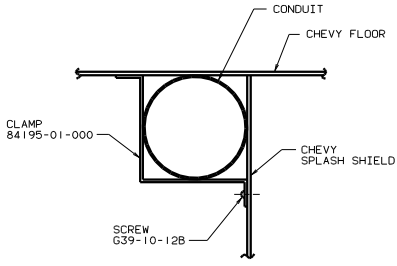
WINNEBAGO 00 F30A

DATE	UNSPECIFIED TOLERANCES ARE:	MATERIAL
DATE	WHOLE DIM (IN) ± 0.1	
DATE	ONE-PLACE (IN) .1	
DATE	TWO-PLACE (IN) .05	
DATE	THREE-PLACE (IN) .01	
DATE	THREE-PLACE (IN) .005	
DATE	THREE-PLACE (IN) .002	

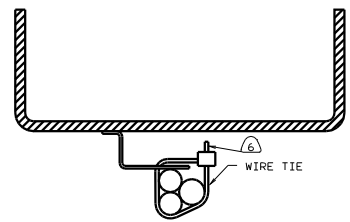
LANE# - - - - - TITLE: WIRING INSTL-CHASSIS

REV # SCALE: NONE 100% NO SCALE DRAWING SHEET 1 OF 2

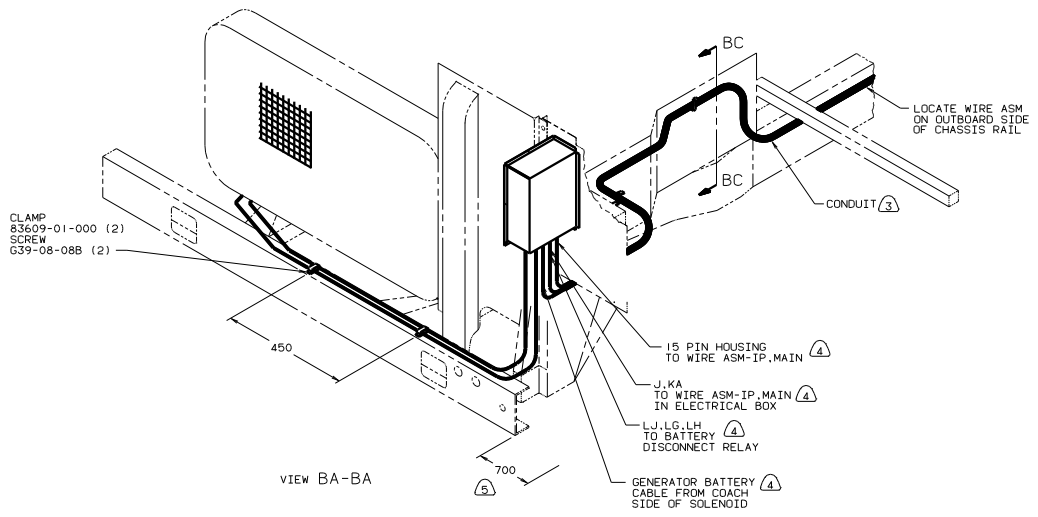
134177



VIEW BC-BC



VIEW BB-BB



VIEW BA-BA

- (6) CUT OFF EXCESS END OF WIRE TIE.
- (5) LAY BATTERY AND GENERATOR CABLE TO THIS DIMENSION FROM END OF CHASSIS CROSSMEMBER TO START INSTALLATION.
- (4) SEE WIRING INSTL-FRONT END FOR ADDITIONAL INFORMATION.
- (3) COVER WITH CONDUIT 41953-09,-10,-11-000 AS REQUIRED.
2. SECURE CONDUIT 41953-01-000, 41953-02-000 AND 41953-03-000 OVER ALL WIRES IN CONTACT WITH SHARP EDGES.
1. LEGEND: — WINNEBAGO, CABLE, — CHASSIS SUPPLIED.

NOTES:

FOR ELECTRICAL TORQUE SPECIFICATIONS SEE DWG NO. 128783-01-000

00 F30A
TITLE: WIRING INSTL-CHASSIS
SHEET 2 OF 2
134177