



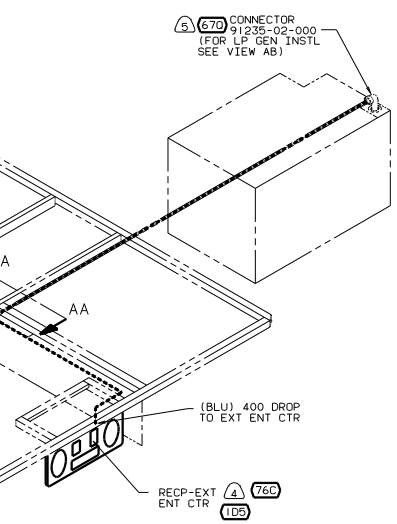
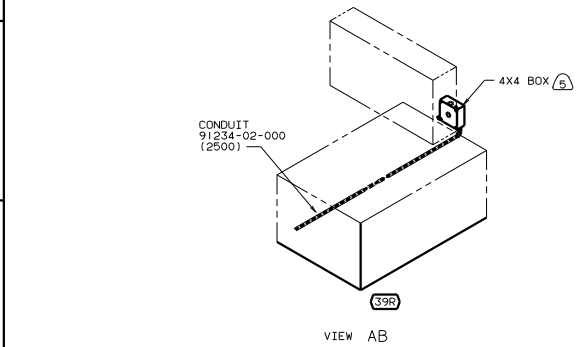
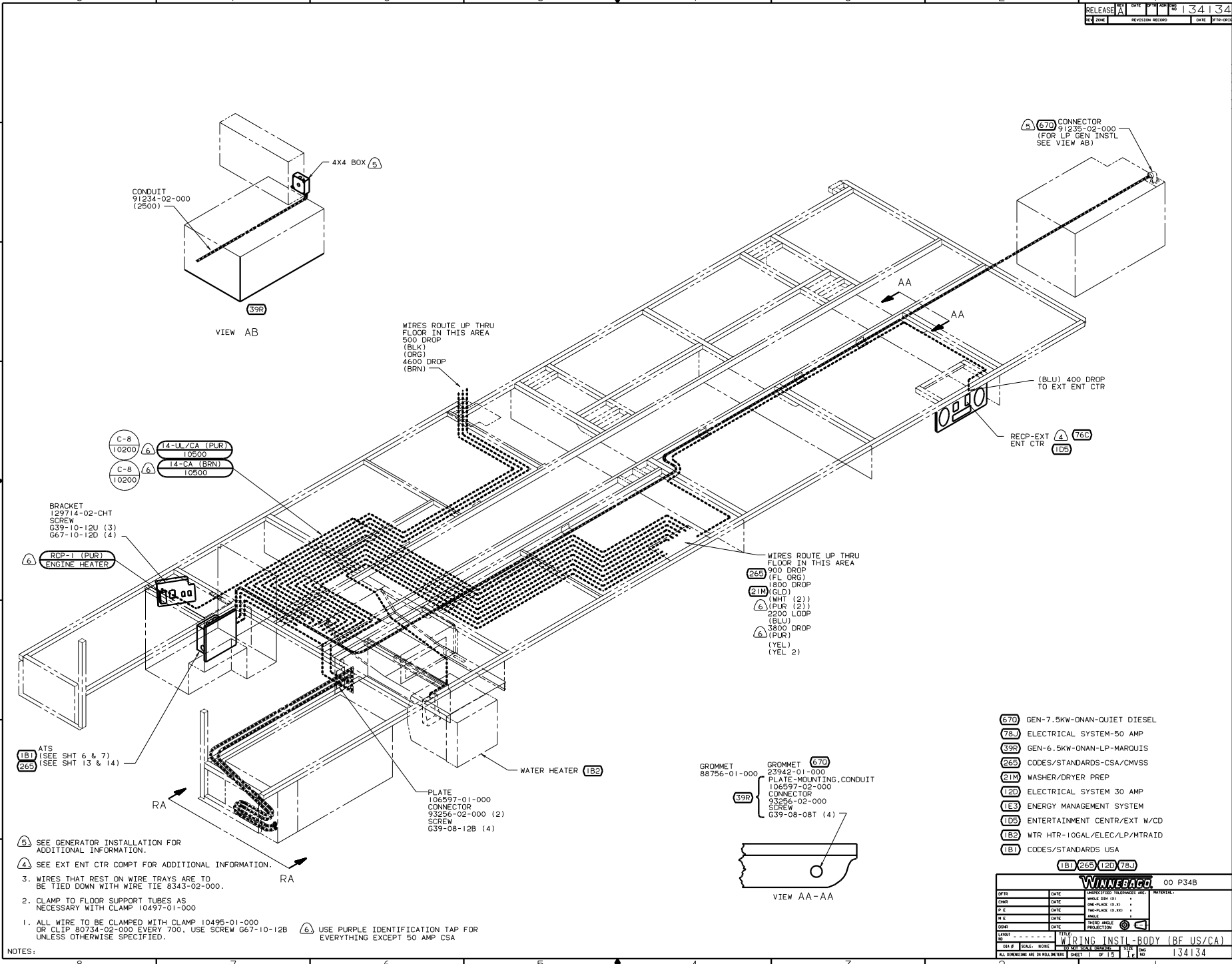
**DANGER**

**Danger of electrical shock, burns or death.** Always remove all power sources before attempting any repair, service or diagnostic work. Power can be present from shore power, generator, inverter or battery. All power sources must be disabled and secured before performing any service.



**CAUTION**

If you lack the skills, tools or equipment to perform diagnostic or repair work leave such work to an authorized Winnebago Industries dealer or other qualified shop.



- C-8 10200 (A) 14-UL/CA (PUR) 10500
- C-8 10200 (A) 14-CA (BRN) 10500

BRACKET 129714-02-CHT  
 SCREW G39-10-12U (3)  
 G67-10-120 (4)

(A) RCP-1 (PUR) ENGINE HEATER

(1B1) ATS (SEE SHT 6 & 7)  
 (265) (SEE SHT 13 & 14)

(5) SEE GENERATOR INSTALLATION FOR ADDITIONAL INFORMATION.

(4) SEE EXT ENT CTR COMPT FOR ADDITIONAL INFORMATION.

3. WIRES THAT REST ON WIRE TRAYS ARE TO BE TIED DOWN WITH WIRE TIE 8343-02-000.

2. CLAMP TO FLOOR SUPPORT TUBES AS NECESSARY WITH CLAMP 10497-01-000

1. ALL WIRE TO BE CLAMPED WITH CLAMP 10495-01-000 OR CLIP 80734-02-000 EVERY 700. USE SCREW G67-10-12B (A) USE PURPLE IDENTIFICATION TAP FOR EVERYTHING EXCEPT 50 AMP CSA

NOTES:

WIRES ROUTE UP THRU FLOOR IN THIS AREA  
 500 DROP (BLK) (ORG)  
 4600 DROP (BRN)

WIRES ROUTE UP THRU FLOOR IN THIS AREA  
 900 DROP (FL ORG)  
 1800 DROP (GLD)  
 (21M) (WHT) (2)  
 (A) (PUR) (2)  
 2200 LOOP (BLU)  
 3800 DROP (A) (PUR) (YEL) (2)

PLATE 106597-01-000  
 CONNECTOR 93296-02-000 (2)  
 SCREW G39-08-12B (4)

GROMMET 88756-01-000 (670)  
 23942-01-000  
 PLATE-MOUNTING CONDUIT 106597-02-000  
 CONNECTOR 93296-02-000  
 SCREW G39-08-08T (4)

(5) (670) CONNECTOR 91234-02-000 (FOR LP GEN INSTL SEE VIEW AB)

(BLU) 400 DROP TO EXT ENT CTR

REC-EXT ENT CTR (A) (76D) (105)

WATER HEATER (182)

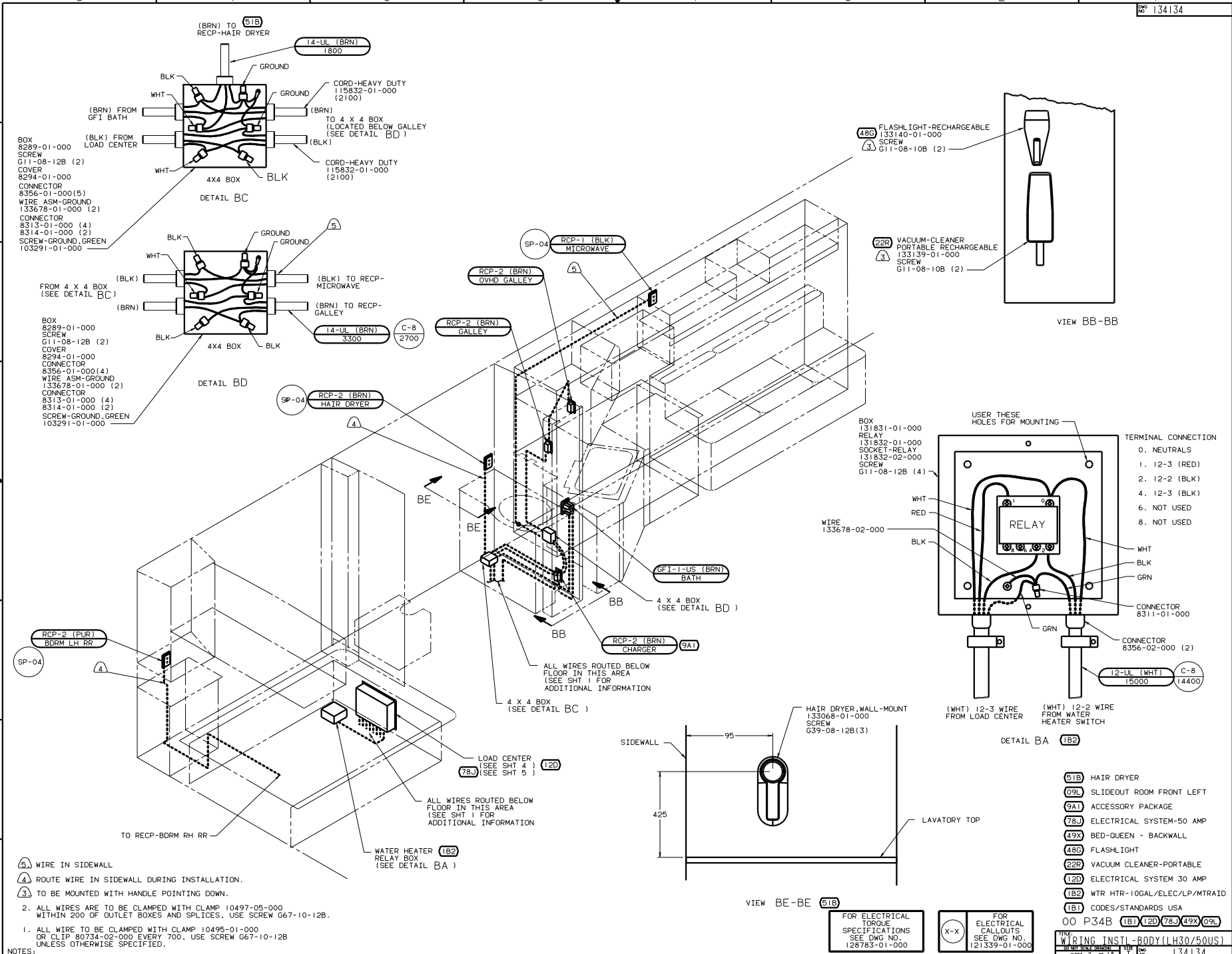
- (670) GEN-7.5KW-ONAN-QUIET DIESEL
- (78J) ELECTRICAL SYSTEM-50 AMP
- (39R) GEN-6.5KW-ONAN-LP-MARQUIS
- (265) CODES/STANDARDS-CSA/CMVSS
- (21M) WASHER/DRYER PREP
- (120) ELECTRICAL SYSTEM 30 AMP
- (1E3) ENERGY MANAGEMENT SYSTEM
- (105) ENTERTAINMENT CENTR/EXT W/CD
- (182) WTR HTR-10GAL/ELEC/LP/MTRADD
- (1B1) CODES/STANDARDS USA

(1B1) (265) (120) (78J)

WINNEBAGO 00 P348

DATE	DESCRIPTION	BY	CHKD

WIRING INSTL-BODY (BF US/CA)  
 SHEET 1 OF 15  
 134134



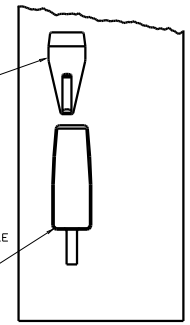
BOX  
8289-01-000  
SCREW  
G11-08-12B (2)  
COVER  
8294-01-000  
CONNECTOR  
8356-01-000(5)  
WIRE ASM-GROUND  
133678-01-000 (2)  
CONNECTOR  
8313-01-000 (4)  
8314-01-000 (2)  
SCREW-GROUND, GREEN  
103291-01-000

DETAIL BC

FROM 4 X 4 BOX  
(SEE DETAIL BC)  
BOX  
8289-01-000  
SCREW  
G11-08-12B (2)  
COVER  
8294-01-000  
CONNECTOR  
8356-01-000(4)  
WIRE ASM-GROUND  
133678-01-000 (2)  
CONNECTOR  
8313-01-000 (4)  
8314-01-000 (2)  
SCREW-GROUND, GREEN  
103291-01-000

DETAIL BD

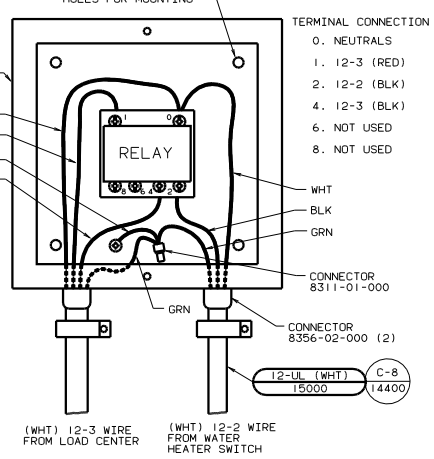
FLASHLIGHT-RECHARGEABLE  
133140-01-000  
SCREW  
G11-08-10B (2)



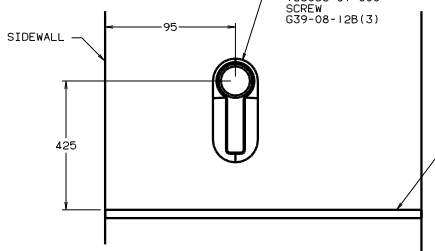
VIEW BB-BB

VACUUM-CLEANER  
PORTABLE RECHARGEABLE  
133139-01-000  
SCREW  
G11-08-10B (2)

BOX  
131831-01-000  
RELAY  
131832-01-000  
SOCKET-RELAY  
131832-02-000  
SCREW  
G11-08-12B (4)



DETAIL BA



VIEW BE-BE

- 51B HAIR DRYER
- 09L SLIDEOUT ROOM FRONT LEFT
- 9A1 ACCESSORY PACKAGE
- 78J ELECTRICAL SYSTEM-50 AMP
- 49X BED-QUEEN - BACKWALL
- 48G FLASHLIGHT
- 22R VACUUM CLEANER-PORTABLE
- 12D ELECTRICAL SYSTEM 30 AMP
- 1B2 WTR HTR-10GAL/ELEC/LP/MTR/AID
- 1B1 CODES/STANDARDS USA

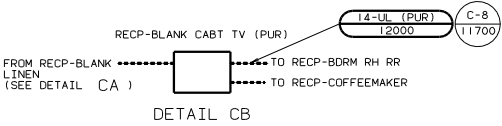
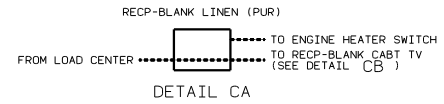
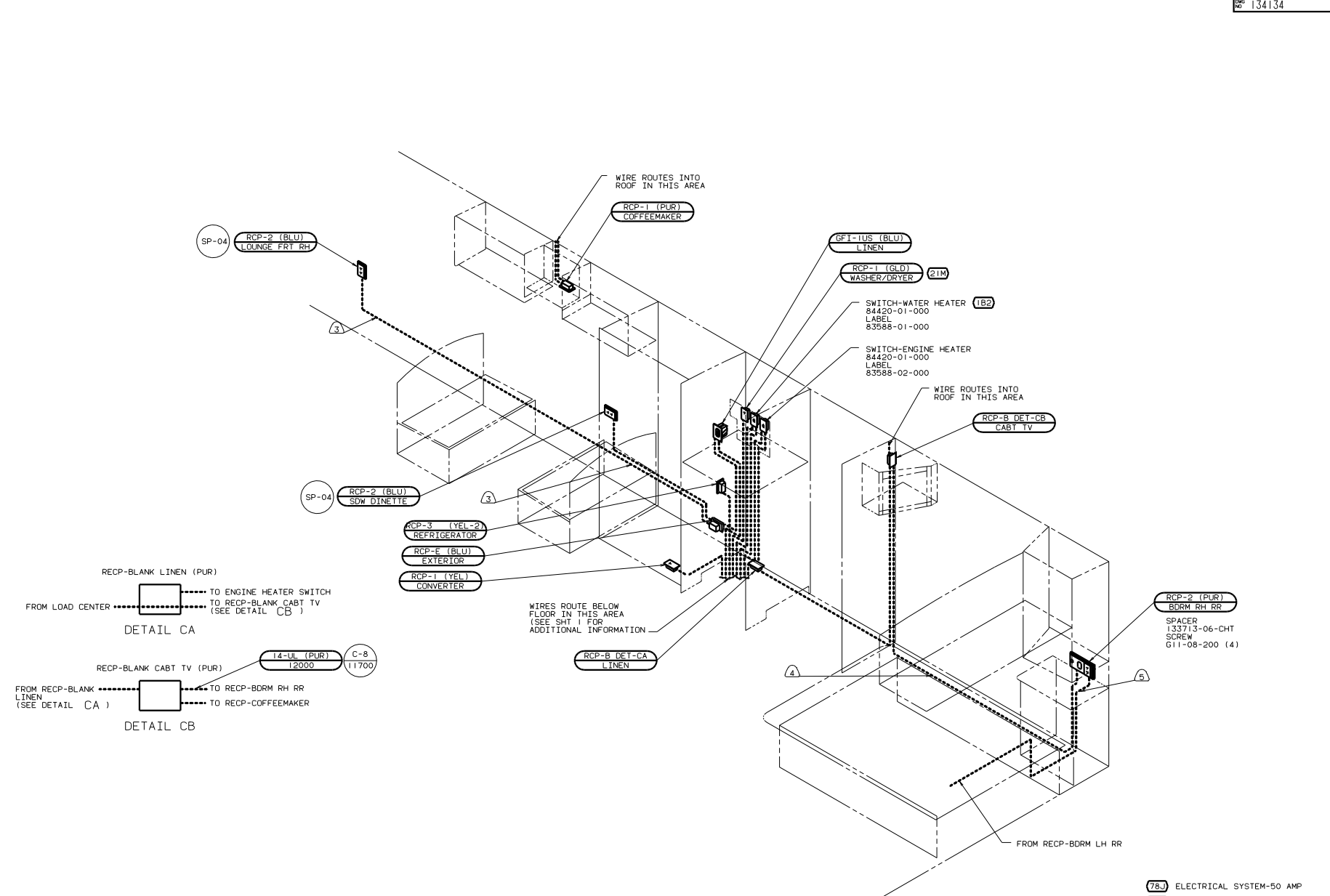
FOR ELECTRICAL  
TORQUE  
SPECIFICATIONS  
SEE DWG NO.  
128783-01-000

FOR ELECTRICAL  
CALLOUTS  
SEE DWG NO.  
121339-01-000

WIRING INSTL-BODY(LH30/50US)  
134134

- NOTES:
1. ALL WIRE TO BE CLAMPED WITH CLAMP 10495-01-000 OR CLIP 80734-02-000 EVERY 700, USE SCREW G67-10-12B UNLESS OTHERWISE SPECIFIED.
  2. ALL WIRES ARE TO BE CLAMPED WITH CLAMP 10497-05-000 WITHIN 200 OF OUTLET BOXES AND SPLICES. USE SCREW G67-10-12B.

5. WIRE IN SIDEWALL
4. ROUTE WIRE IN SIDEWALL DURING INSTALLATION.
3. TO BE MOUNTED WITH HANDLE POINTING DOWN.



- ⑤ ROUTE WIRE IN SIDEWALL DURING INSTALLATION.
- ④ ROUTE WIRE IN FLOOR DURING INSTALLATION.
- ③ WIRE ROUTED IN SIDEWALL.

2. ALL WIRES ARE TO BE CLAMPED WITH CLAMP 10497-05-000 WITHIN 200 OF OUTLET BOXES AND SPLICES. USE SCREW G67-10-12B.

1. ALL WIRE TO BE CLAMPED WITH CLAMP 10495-01-000 OR CLIP 80734-02-000 EVERY 700. USE SCREW G67-10-12B UNLESS OTHERWISE SPECIFIED.

- ⑦8J ELECTRICAL SYSTEM-50 AMP
- ⑤1B HAIR DRYER
- ④9X BED-QUEEN - BACKWALL
- ②1M WASHER/DRYER PREP
- ①2D ELECTRICAL SYSTEM 30 AMP
- ①B2 WTR HTR-10GAL/ELEC/LP/MTRAITD
- ①B1 CODES/STANDARDS USA

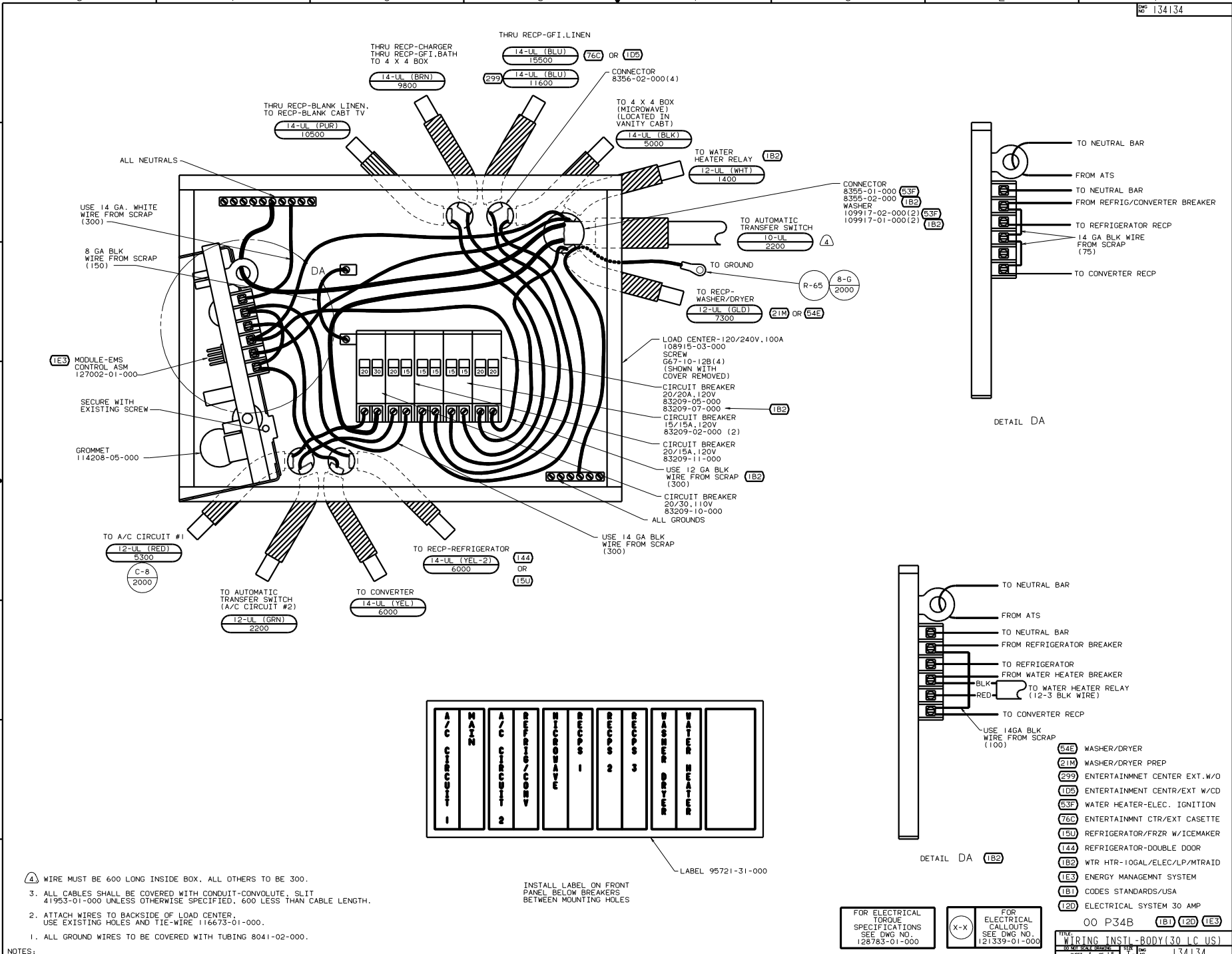
FOR ELECTRICAL TORQUE SPECIFICATIONS SEE DWG NO. 128783-01-000

FOR ELECTRICAL CALL OUTS SEE DWG NO. 121339-01-000

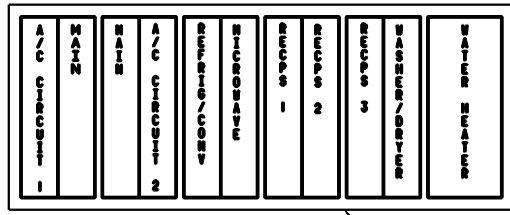
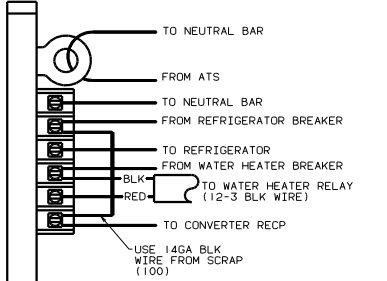
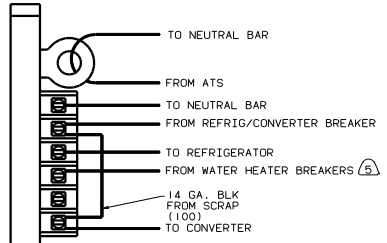
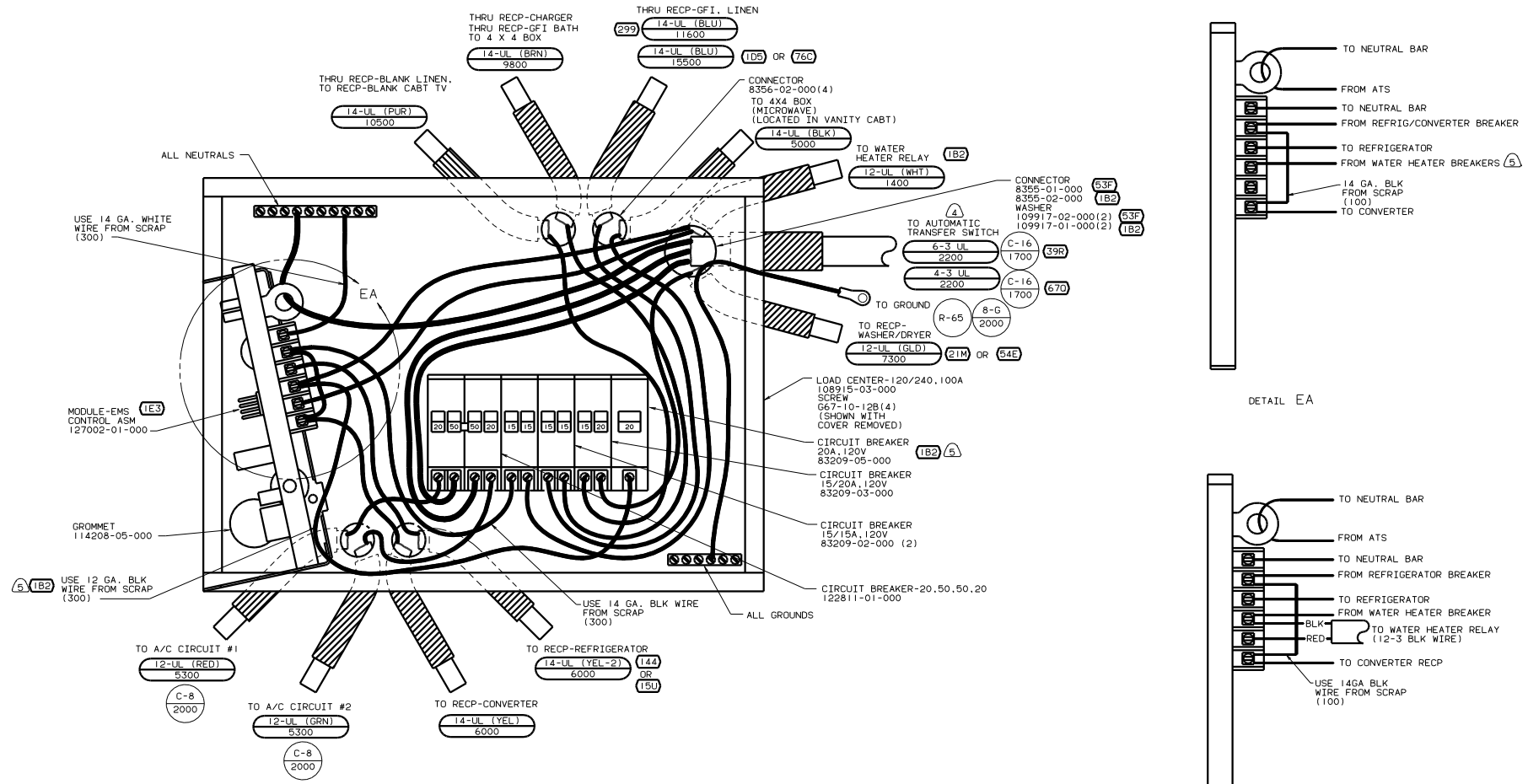
00 P34B ①B1 ①2D ⑦8J ④9X

WIRING INSTL-BODY (RH30/50US)

sheet 3 of 15



4. WIRE MUST BE 600 LONG INSIDE BOX. ALL OTHERS TO BE 300.
3. ALL CABLES SHALL BE COVERED WITH CONDUIT-CONVOLUTE, SLIT 41953-01-000 UNLESS OTHERWISE SPECIFIED. 600 LESS THAN CABLE LENGTH.
2. ATTACH WIRES TO BACKSIDE OF LOAD CENTER. USE EXISTING HOLES AND TIE-WIRE 116673-01-000.
1. ALL GROUND WIRES TO BE COVERED WITH TUBING 8041-02-000.



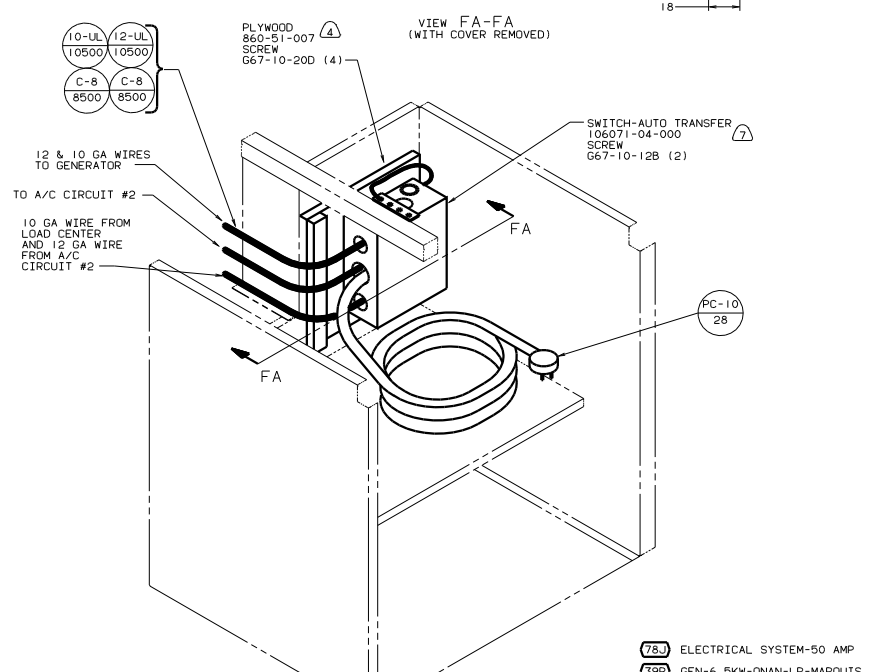
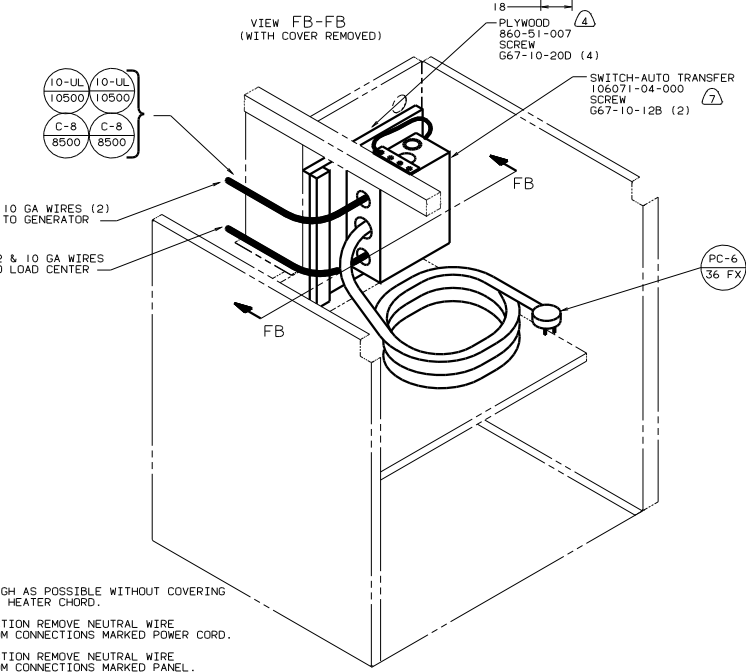
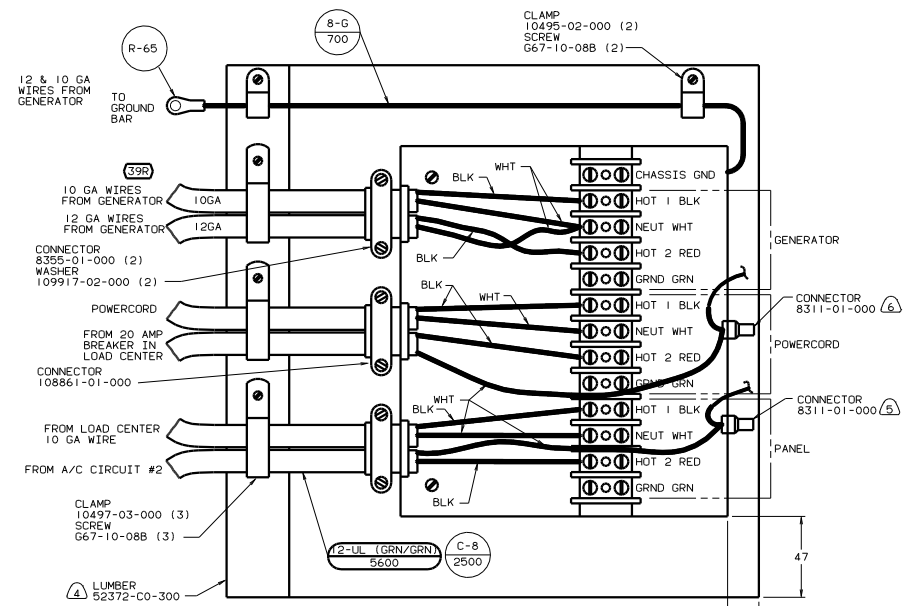
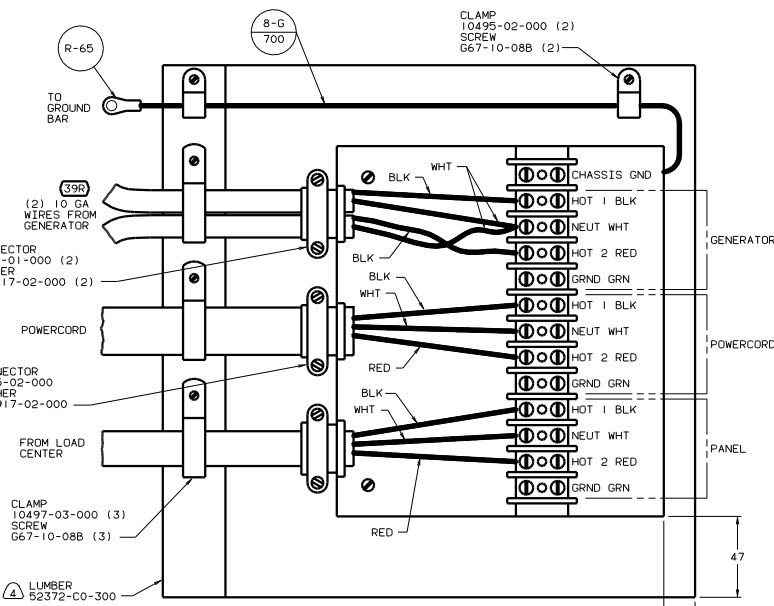
- THIS BREAKER MUST BE INSTALLED AND WIRED TO EMS EVEN WITHOUT (1B2).
- WIRE MUST BE 600 LONG INSIDE BOX, ALL OTHERS TO BE 300.
- ALL CABLES SHALL BE COVERED WITH CONDUIT-CONVOLUTE, SLIT 41953-01-000 UNLESS OTHERWISE SPECIFIED. 600 LESS THAN CABLE LENGTH.
- ATTACH WIRES TO BACKSIDE OF LOAD CENTER, USE EXISTING HOLES AND TIE-WIRE 116673-01-000.
- ALL GROUND WIRES TO BE COVERED WITH TUBING 8041-02-000.

- (54E) WASHER/DRYER
- (21M) WASHER/DRYER PREP
- (299) ENTERTAINMNET CENTER EXT.W/O
- (670) GEN-7.5KW-ONAN-QUIET DIESEL
- (39A) GEN-6.5KW-ONAN-LP-MARQUIS
- (63F) WATER HEATER-ELEC. IGNITION
- (15U) REFRIGERATOR/FRZR W/ICEMAKER
- (144) REFRIGERATOR-DOUBLE DOOR
- (1B2) WTR HTR-10GAL/ELEC/LP/MTRAI
- (78J) ELECTRICAL SYSTEM - 50 AMP
- (1E3) ENERGY MANEMNT SYSTEM
- (1B1) CODES STANDARDS/USA

FOR ELECTRICAL TORQUE SPECIFICATIONS SEE DWG NO. 128783-01-000

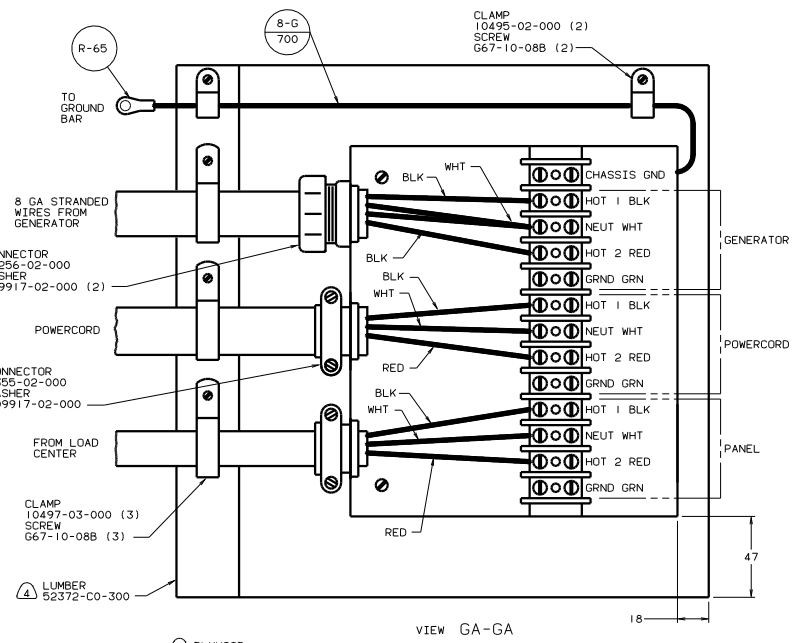
FOR ELECTRICAL CALLOUTS SEE DWG NO. 121339-01-000

00 P34B (1B1) (1E3) (78J)  
 WIRING INSTL-BODY,110V(50LCUS)  
 SHEET 5 OF 15

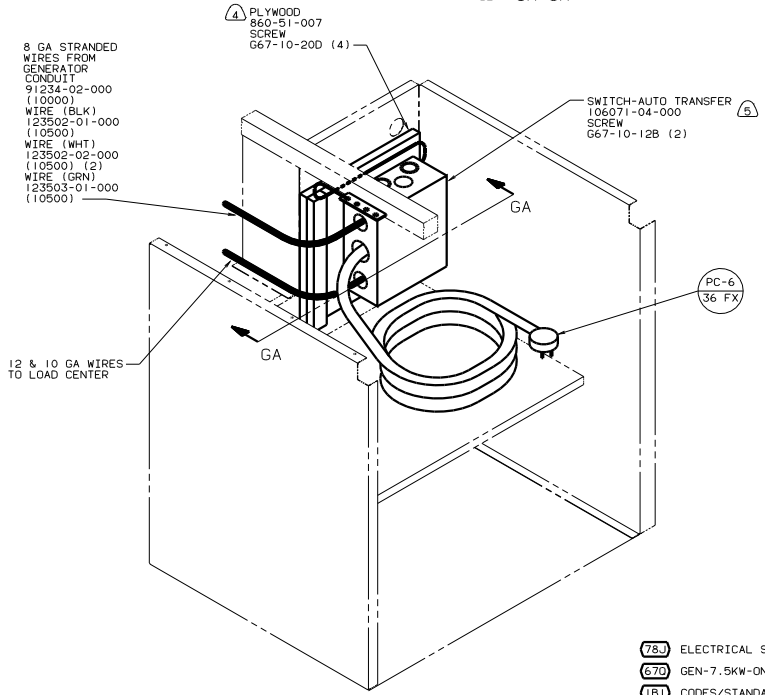


- 7. MOUNT ATS AS HIGH AS POSSIBLE WITHOUT COVERING HOLE FOR ENGINE HEATER CHORD.
- 6. FOR THIS CONNECTION REMOVE NEUTRAL WIRE MARKED BLUE FROM CONNECTIONS MARKED POWER CORD.
- 5. FOR THIS CONNECTION REMOVE NEUTRAL WIRE MARKED BLUE FROM CONNECTIONS MARKED PANEL.
- 4. PAINT EXPOSED SURFACE BLACK WITH 106112-01-000
- 3. ALL 110V STRANDED WIRE W/O TERMINALS TO BE STRIPPED 10MM AND SOLDER DIPPED.
- 2. GROUND WIRES NOT SHOWN FOR CLARITY.
- 1. ALL WIRES TO BE CLAMPED WITH IN 200 OF BOX.

- 78J ELECTRICAL SYSTEM-50 AMP
- 39R GEN-6.5KW-ONAN-LP-MARQUIS
- 12D ELECTRICAL SYSTEM 30 AMP
- 1B1 CODES/STANDARDS USA



VIEW GA-GA



- 5. MOUNT ATS AS HIGH AS POSSIBLE WITHOUT COVERING HOLE FOR ENGINE HEATER CHORD.
- 4. PAINT EXPOSED SURFACE BLACK WITH 106112-01-000
- 3. ALL 110V STRANDED WIRE W/O TERMINALS TO BE STRIPPED 10MM AND SOLDER DIPPED.
- 2. GROUND WIRES NOT SHOWN FOR CLARITY.
- 1. ALL WIRES TO BE CLAMPED WITH IN 200 OF BOX.

- 78J ELECTRICAL SYSTEM-50 AMP
- 67D GEN-7.5KW-QNAN-QUIET DIESEL
- 1B1 CODES/STANDARDS USA

00 P34B 1B1

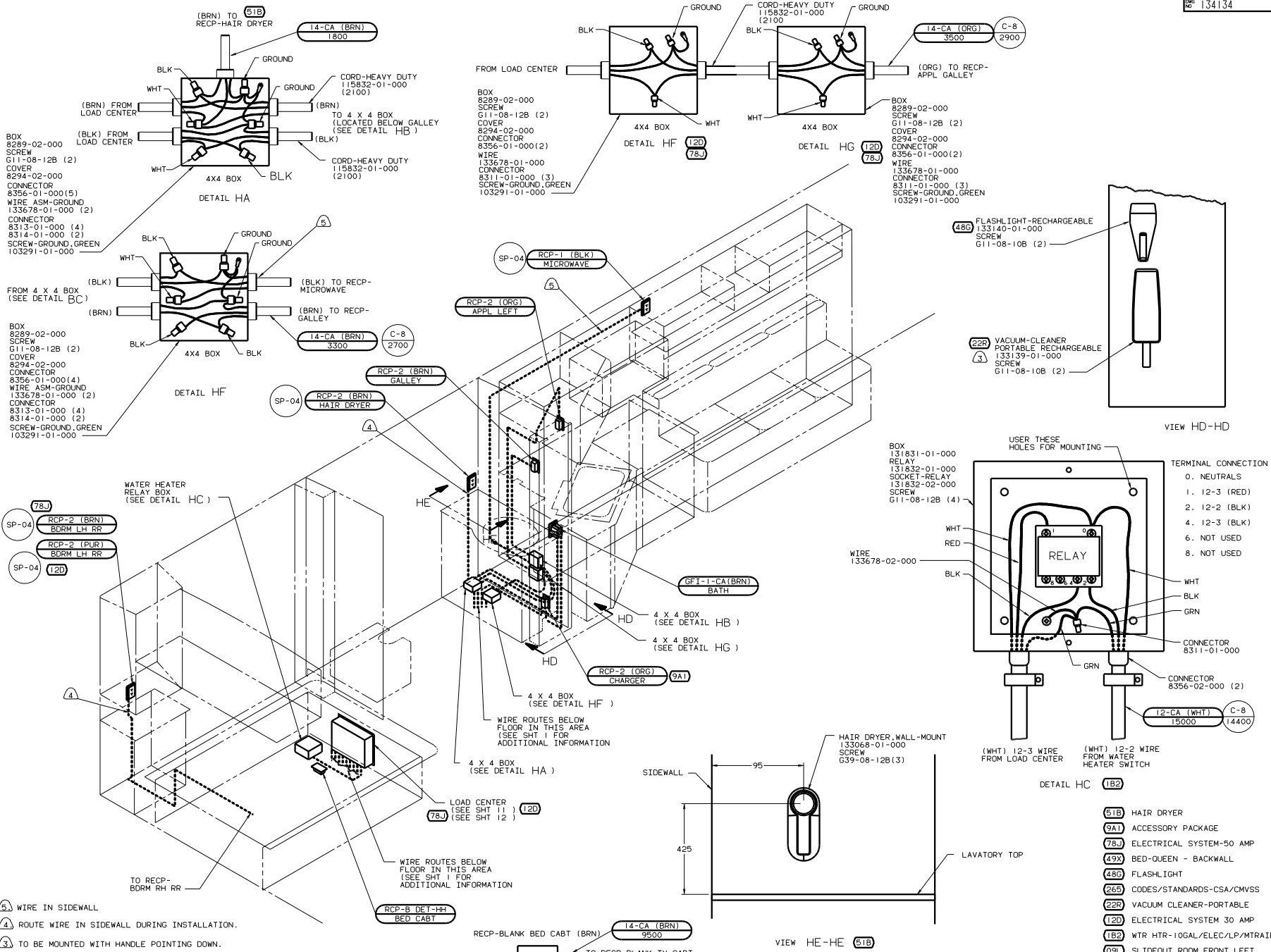
NO	SCALE	REV	DATE
1		1	

134134

67D 78J

NOTES:





- ① WIRE IN SIDEWALL
- ② ROUTE WIRE IN SIDEWALL DURING INSTALLATION.
- ③ TO BE MOUNTED WITH HANDLE POINTING DOWN.
- 2. ALL WIRES ARE TO BE CLAMPED WITH CLAMP 10495-01-000 WITHIN 200 OF OUTLET BOXES AND SPLICES. USE SCREW G67-10-12B.
- 1. ALL WIRE TO BE CLAMPED WITH CLAMP 10495-01-000 OR CLIP 80734-02-000 EVERY 700. USE SCREW G67-10-12B UNLESS OTHERWISE SPECIFIED.

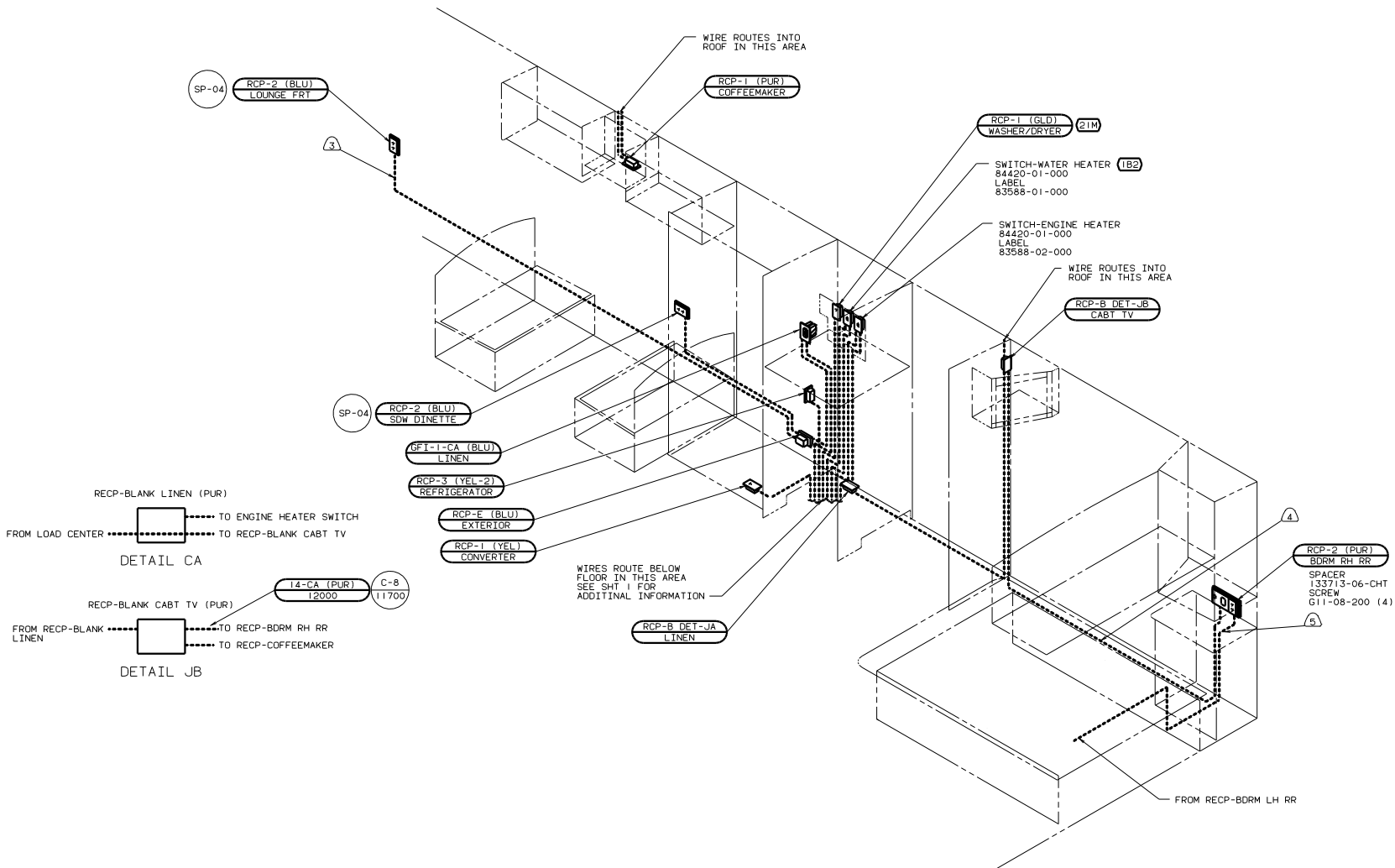
FOR ELECTRICAL TORQUE SPECIFICATIONS SEE DWG NO. 128783-01-000

X-X FOR ELECTRICAL CALLOUTS SEE DWG NO. 121339-01-000

00 P34B (265) (12D) (78J) (49X) (09L)

WIRING INSTL - BODY (130/50CA)

134134



RECP-BLANK LINEN (PUR)  
 FROM LOAD CENTER ..... TO ENGINE HEATER SWITCH  
 ..... TO RECP-BLANK CABT TV

DETAIL CA

RECP-BLANK CABT TV (PUR)  
 FROM RECP-BLANK LINEN ..... TO RECP-BDRM RH RR  
 ..... TO RECP-COFFEEMAKER

DETAIL JB

WIRES ROUTE BELOW FLOOR IN THIS AREA  
 SEE SHT 1 FOR ADDITIONAL INFORMATION

RCP-2 (PUR)  
 BDRM RH RR  
 SPACER  
 133713-06-CHT  
 SCREW  
 G11-08-200 (4)

- (5) ROUTE WIRE IN SIDEWALL DURING INSTALLATION.
- (4) ROUTE WIRE IN FLOOR DURING INSTALLATION.
- (3) WIRE ROUTED IN SIDEWALL.

2. ALL WIRES ARE TO BE CLAMPED WITH CLAMP 10497-05-000 WITHIN 200 OF OUTLET BOXES AND SPLICES. USE SCREW G67-10-12B.  
 1. ALL WIRE TO BE CLAMPED WITH CLAMP 10495-01-000 OR CLIP 80734-02-000 EVERY 700. USE SCREW G67-10-12B UNLESS OTHERWISE SPECIFIED.

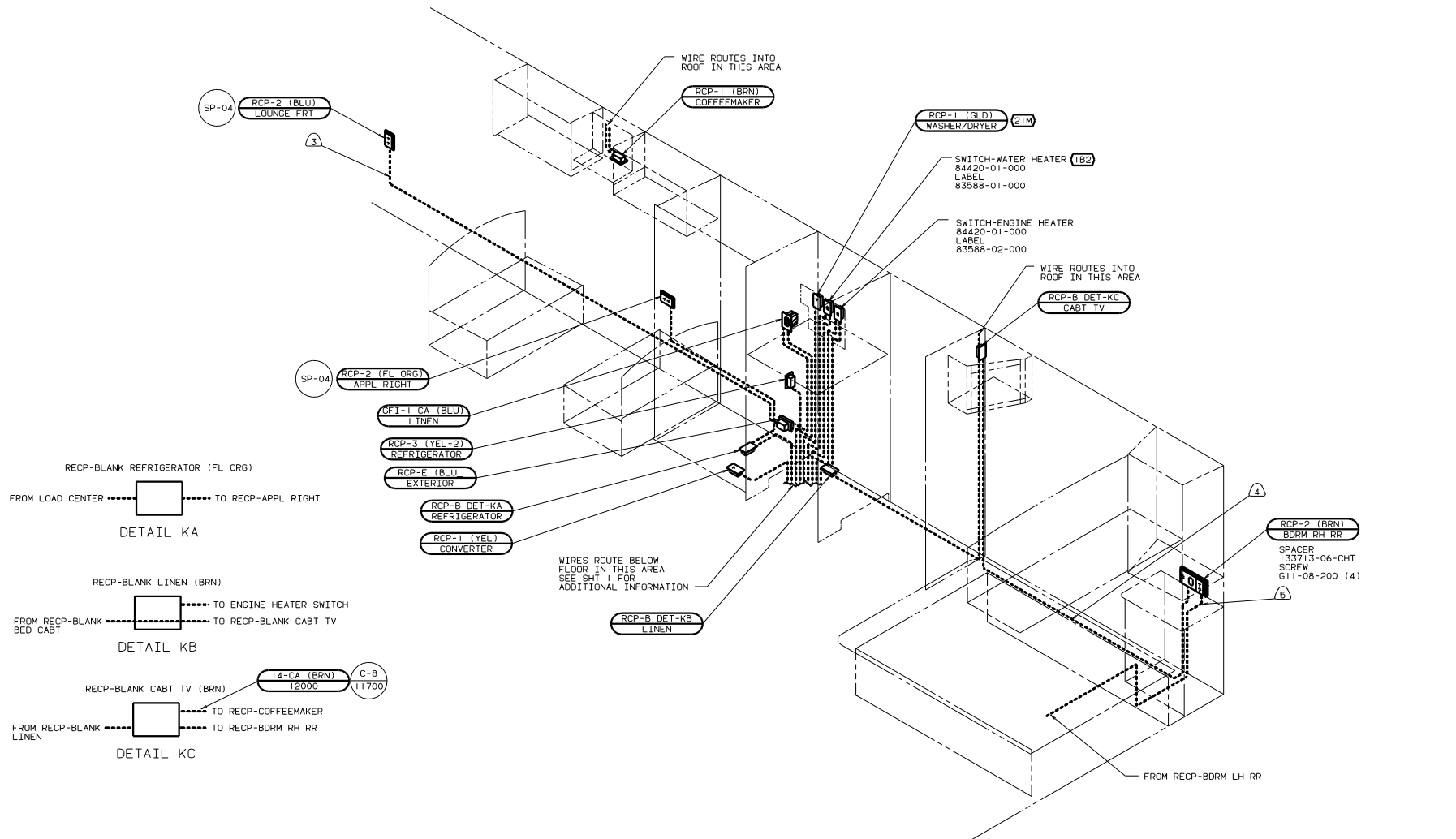
NOTES:

- (49X) BED-QUEEN - BACKWALL
- (78J) ELECTRICAL SYSTEM-50 AMP
- (265) CODES/STANDARDS-CSA/CMVSS
- (21M) WASHER/DRYER PREP
- (12D) ELECTRICAL SYSTEM 30 AMP
- (1B2) WTR HTR-10GAL/ELEC/LP/MTRAIID

FOR ELECTRICAL TORQUE SPECIFICATIONS SEE DWG NO. 128763-01-000

FOR ELECTRICAL CALLOUTS SEE DWG NO. 121339-01-000

00 P34B (1B2)(12D)(49X)  
 WIRING INSTL - BODY(R 30 CA)  
 SHEET 9 OF 15



RECIP-BLANK REFRIGERATOR (FL ORG)  
 FROM LOAD CENTER ..... TO RECIP-APPL RIGHT

DETAIL KA

RECIP-BLANK LINEN (BRN)  
 FROM RECIP-BLANK ..... TO ENGINE HEATER SWITCH  
 FROM RECIP-BLANK ..... TO RECIP-BLANK CABT TV  
 FROM RECIP-BLANK ..... TO RECIP-COFFEEMAKER

DETAIL KB

RECIP-BLANK CABT TV (BRN) ..... TO RECIP-BDRM RH RR  
 RECIP-BLANK CABT TV (BRN) ..... TO RECIP-COFFEEMAKER

DETAIL KC

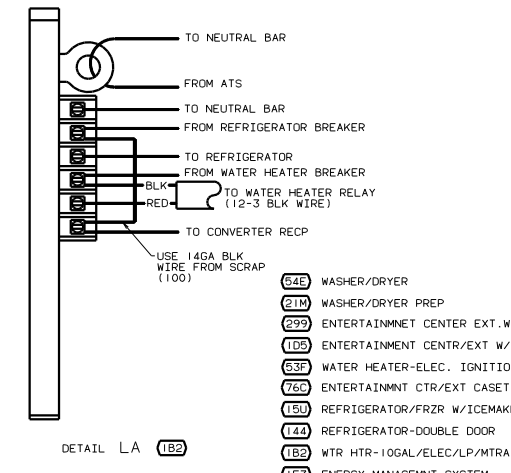
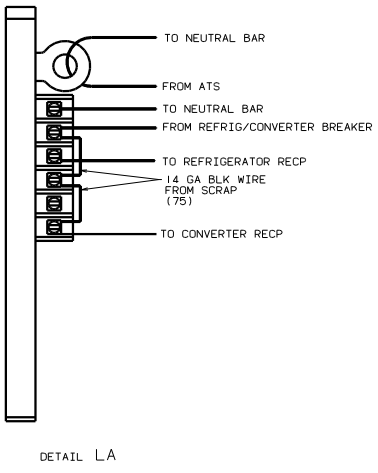
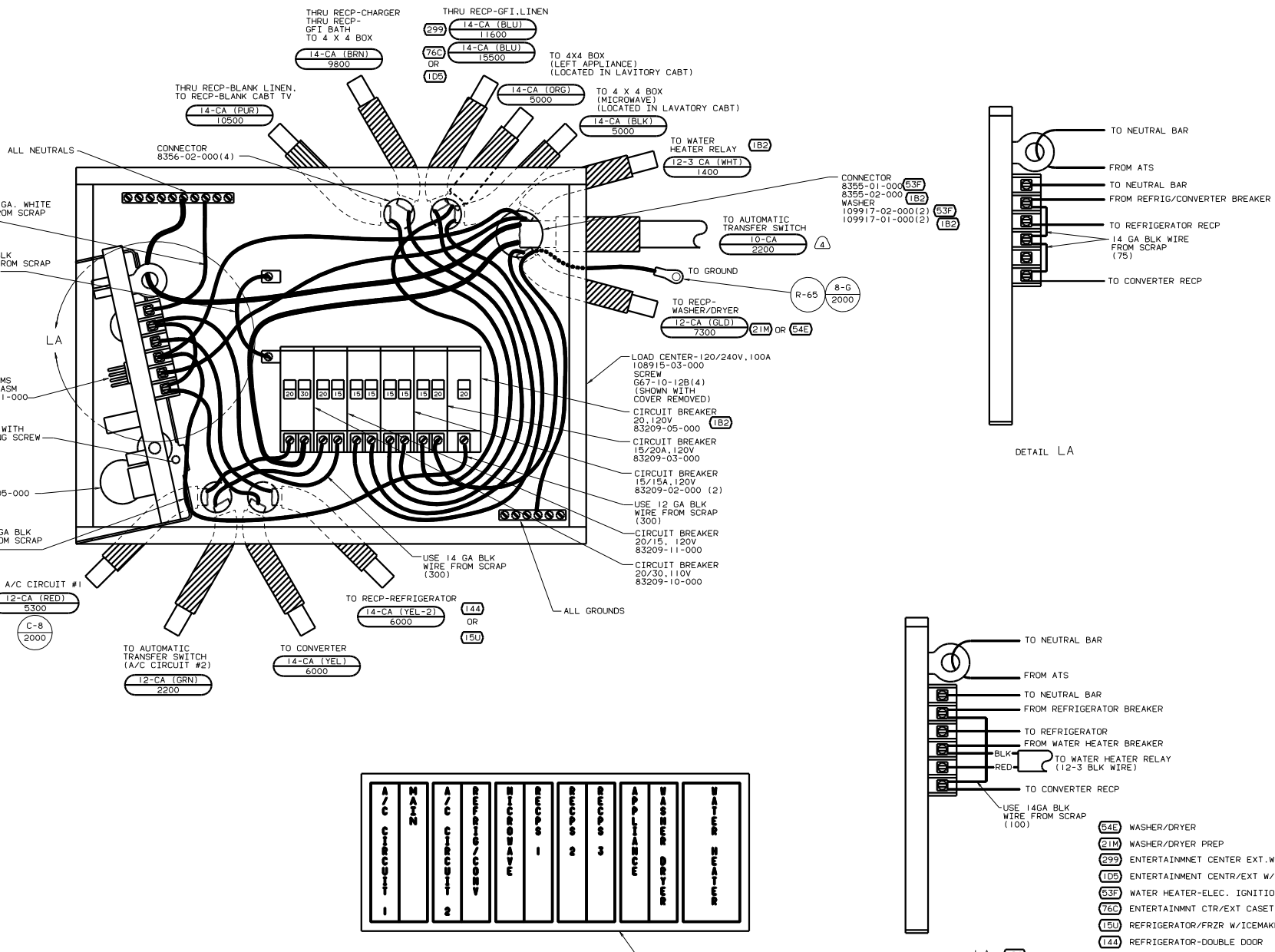
- ⑤ ROUTE WIRE IN SIDEWALL DURING INSTALLATION.  
 ④ ROUTE WIRE IN FLOOR DURING INSTALLATION.  
 ③ WIRE ROUTED IN SIDEWALL.
2. ALL WIRES ARE TO BE CLAMPED WITH CLAMP 10497-05-000 WITHIN 200 OF OUTLET BOXES AND SPLICES. USE SCREW G67-10-12B.
1. ALL WIRE TO BE CLAMPED WITH CLAMP 10495-01-000 OR CLIP 80734-02-000 EVERY 700. USE SCREW G67-10-12B UNLESS OTHERWISE SPECIFIED.

- ⑦⑧ ELECTRICAL SYSTEM-50 AMP  
 ④⑨ BED-QUEEN - BACKWALL  
 ②⑥ CODES/STANDARDS-CSA/CMVSS  
 ②①① WASHER/DRYER PREP  
 ①② WTR HTR-10GAL/ELEC/LP/MTRAIID

FOR ELECTRICAL TORQUE SPECIFICATIONS SEE DWG NO. 128783-01-000

FOR ELECTRICAL CALLOUTS SEE DWG NO. 121339-01-000

00 P34B ②⑥⑦⑧④⑨  
 WIRING INSTL-BODY (R 50 CA)  
 SHEET 10 OF 15



A / C C I R C U I T # 1	M A I N	A / C C I R C U I T # 2	R E F R I G / C O N V	M I C R O W A V E	R E C P S 1	R E C P S 2	R E C P S 3	A P P L I A N C E	W A S H E R D R Y E R	W A T E R H E A T E R
-------------------------------	---------	-------------------------------	--------------------------	-------------------	----------------	----------------	----------------	-------------------	--------------------------	--------------------------

INSTALL LABEL ON FRONT PANEL BELOW BREAKERS BETWEEN MOUNTING HOLES

LABEL 95721-35-000

4. WIRE MUST BE 600 LONG INSIDE BOX. ALL OTHERS TO BE 300.
3. ALL CABLES SHALL BE COVERED WITH CONDUIT-CONVOLUTE, SLIT 41953-01-000 UNLESS OTHERWISE SPECIFIED. 600 LESS THAN CABLE LENGTH.
2. ATTACH WIRES TO BACKSIDE OF LOAD CENTER. USE EXISTING HOLES AND TIE-WIRE 116673-01-000.
1. ALL GROUND WIRES TO BE COVERED WITH TUBING 8041-02-000.

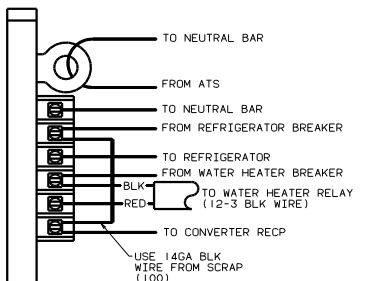
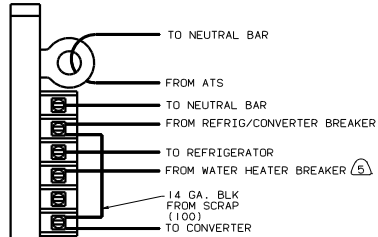
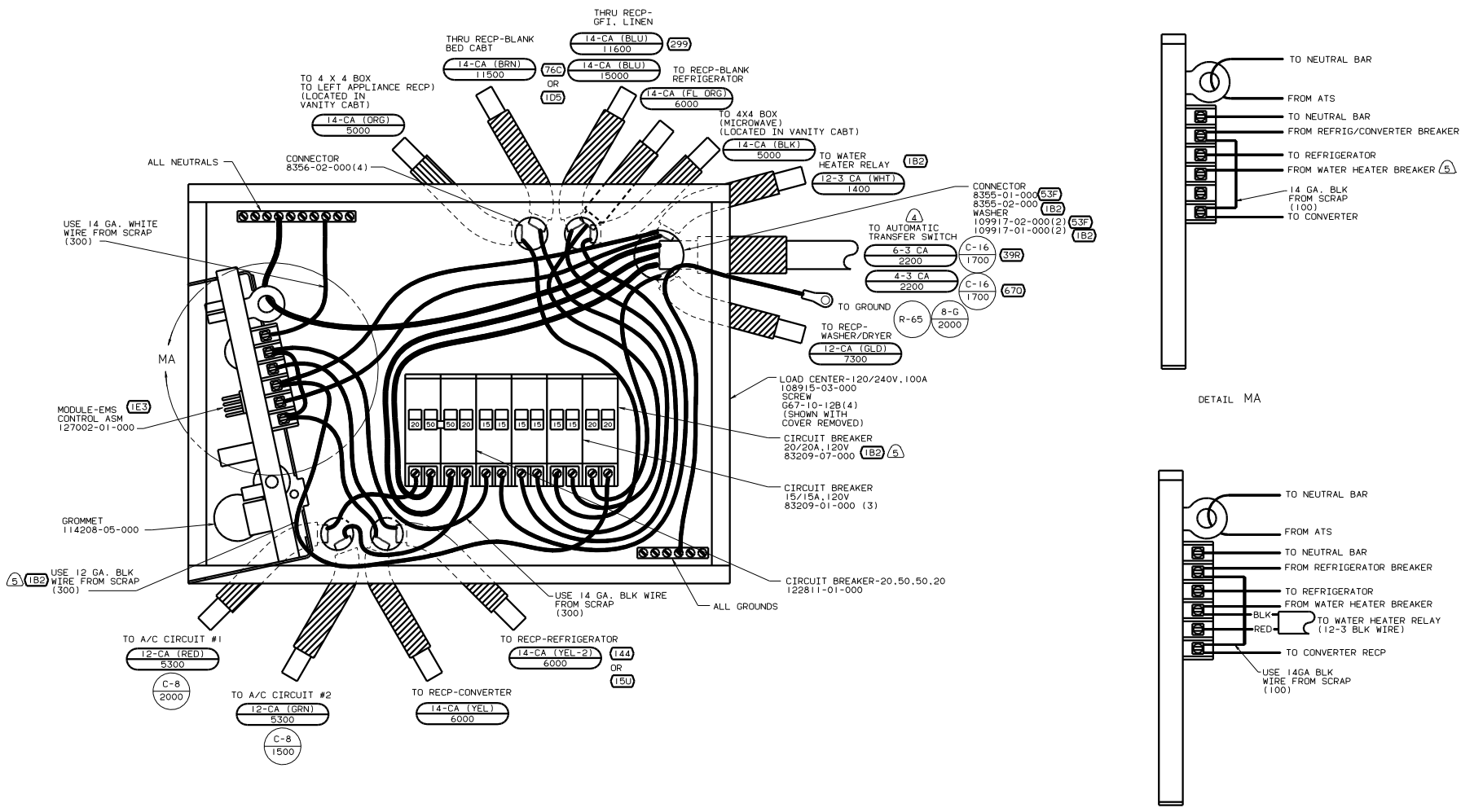
FOR ELECTRICAL TORQUE SPECIFICATIONS SEE DWG NO. 128783-01-000

FOR ELECTRICAL CALLOUTS SEE DWG NO. 121339-01-000

00 P34B (265) (120) (1E3)

WIRING INSTL-BODY(30 LC CA)

134134



A/C CIRCUIT #1	WATER HEATER	WASHER DRYER	APPLIANCE	APPLIANCE	RECP 2	RECP 1	MICROWAVE	REFRIG/CONV	WATER	A/C CIRCUIT #2
----------------	--------------	--------------	-----------	-----------	--------	--------	-----------	-------------	-------	----------------

LABEL 95721-36-000

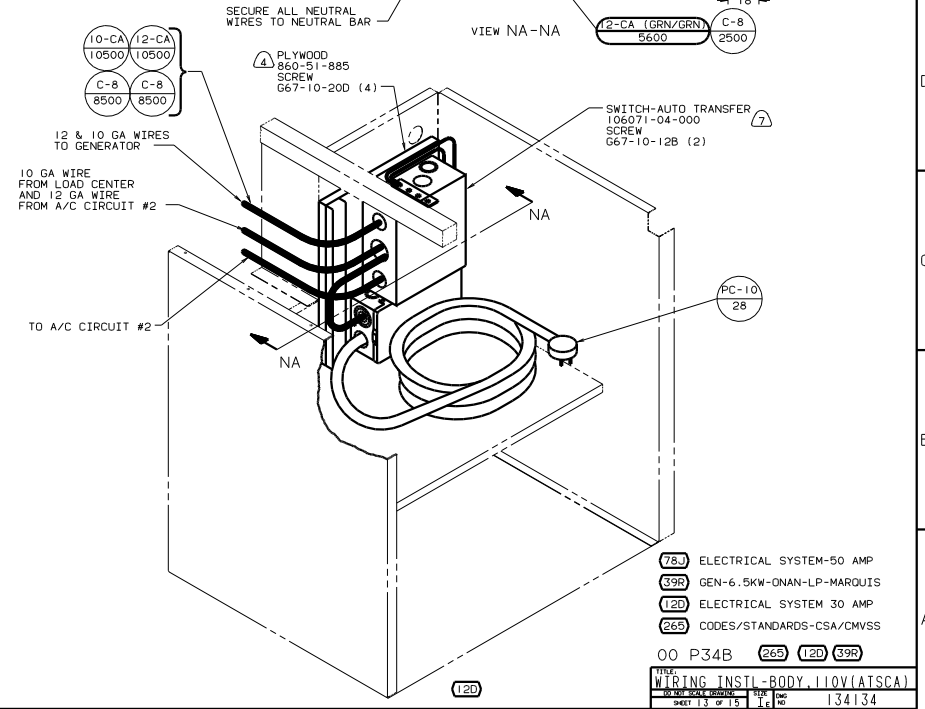
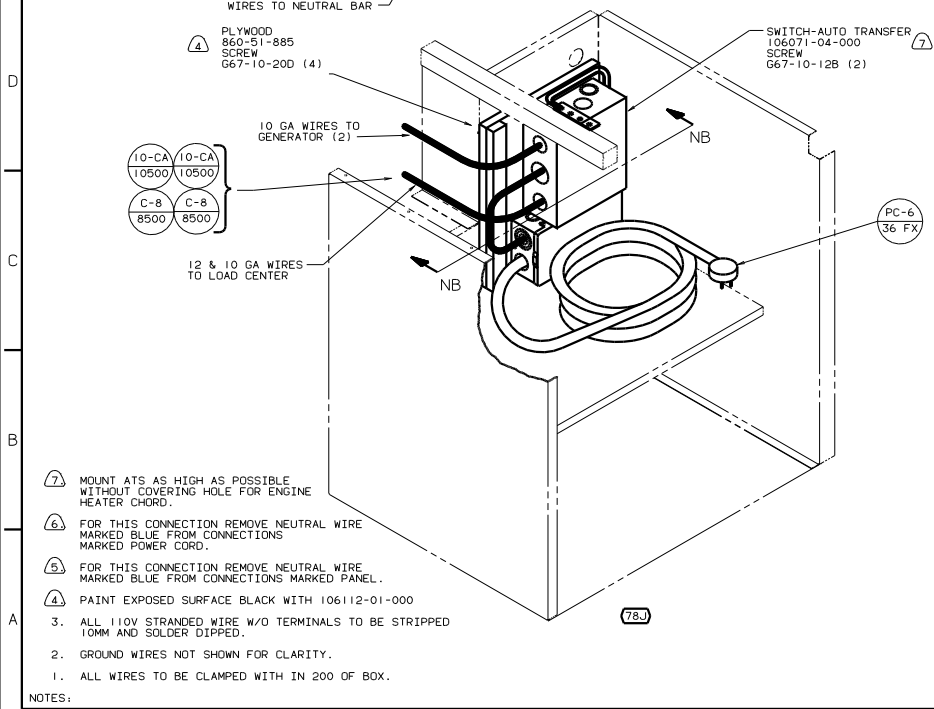
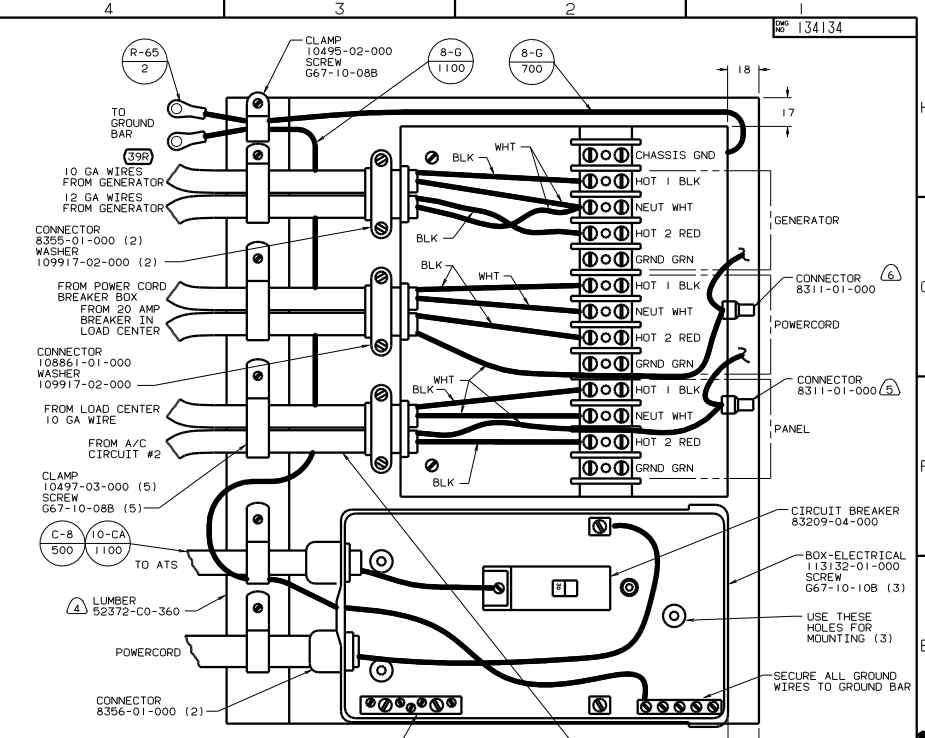
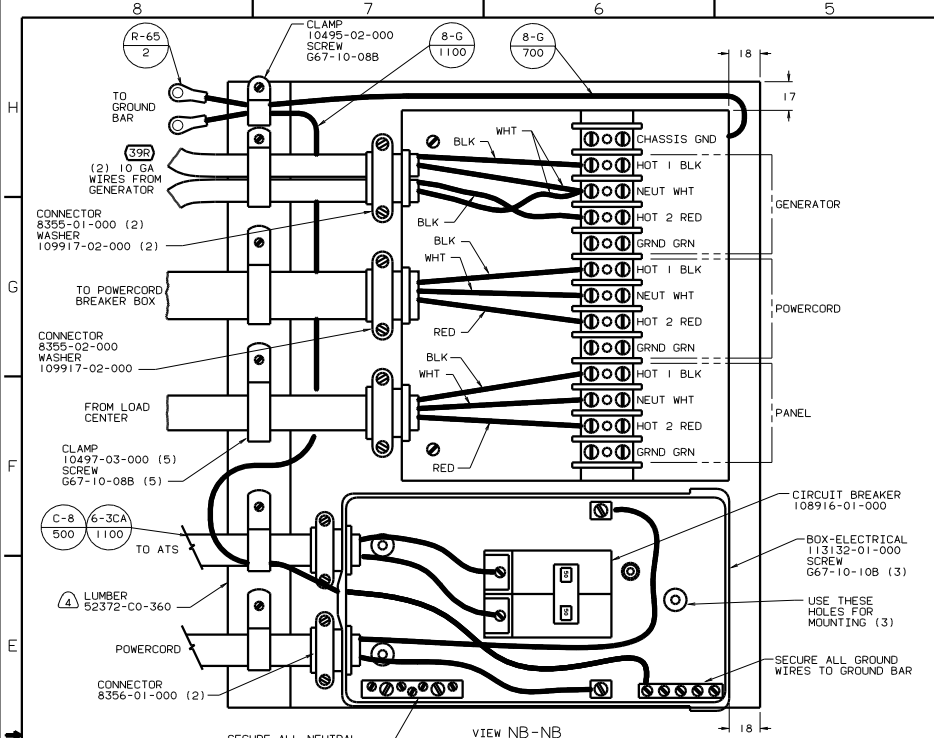
INSTALL LABEL ON FRONT PANEL BELOW BREAKERS BETWEEN MOUNTING HOLES

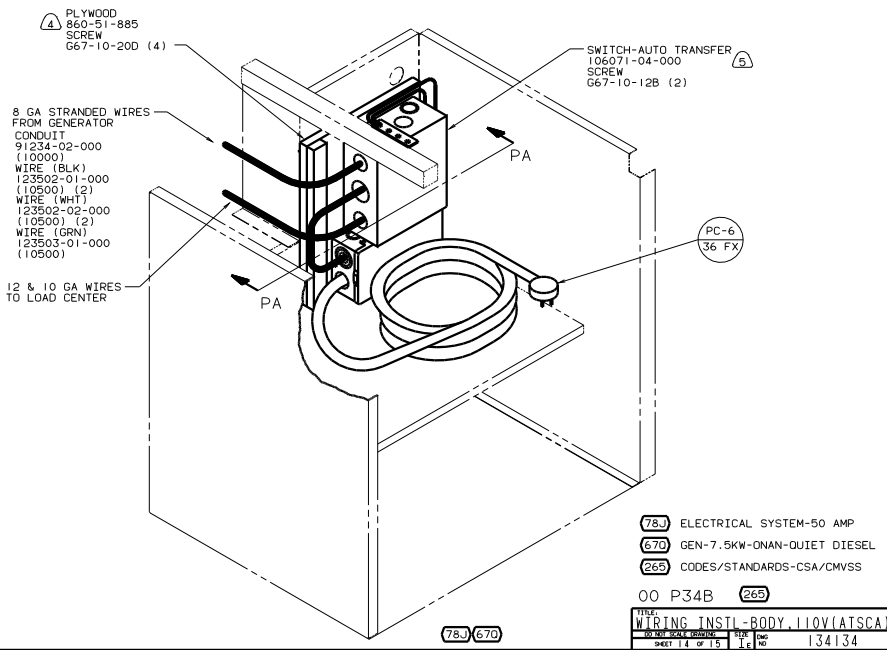
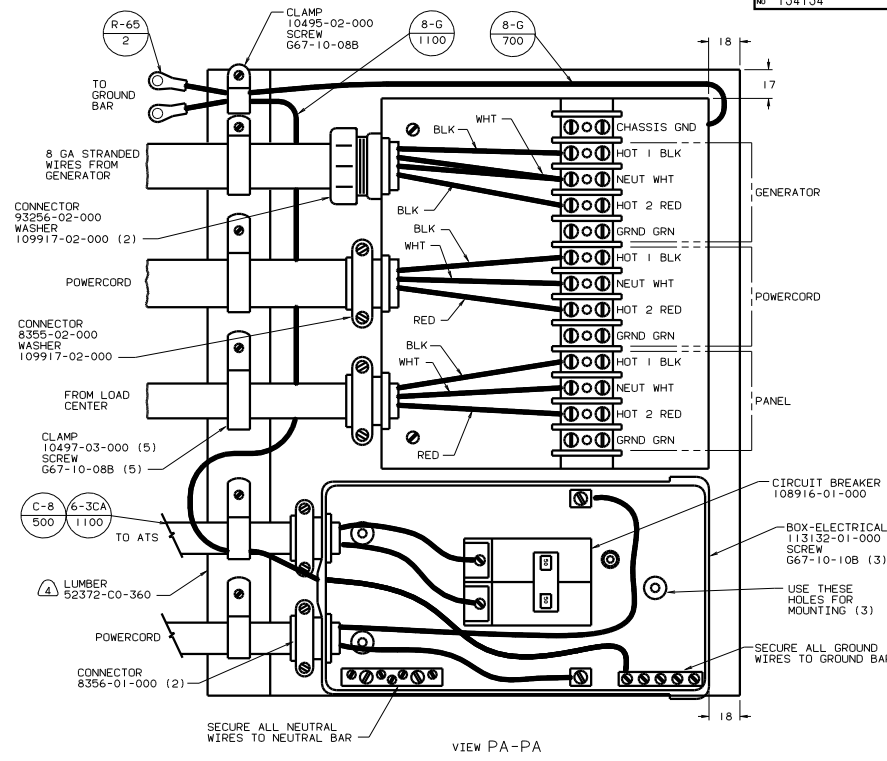
- THIS BREAKER MUST BE INSTALLED AND WIRED TO EMS EVEN WITHOUT 1B2.
- WIRE MUST BE 600 LONG INSIDE BOX, ALL OTHERS TO BE 300.
- ALL CABLES SHALL BE COVERED WITH CONDUIT-CONVOLUTE, SLIT 41953-01-000 UNLESS OTHERWISE SPECIFIED. 600 LESS THAN CABLE LENGTH.
- ATTACH WIRES TO BACKSIDE OF LOAD CENTER, USE EXISTING HOLES AND TIE-WIRE 116673-01-000.
- ALL GROUND WIRES TO BE COVERED WITH TUBING 8041-02-000.

- 105 ENTERTAINMENT CTR/EXT W/CD
- 63F WATER HEATER-ELEC. IGNITION
- 670 GEN-7.5KW-ONAN-QUIET DIESEL
- 39R GEN-6.5KW-ONAN-LP-MARQUIS
- 76C ENTERTAINMENT CTR/EXT CASSETTE
- 15U REFRIGERATOR/FRZR W/ICEMAKER
- 144 REFRIGERATOR-DOUBLE DOOR
- 1B2 WTR HTR-10GAL/ELEC/LP/MTRAIID
- 78J ELECTRICAL SYSTEM - 50 AMP
- 1E3 ENERGY MANAGEMENT SYSTEM
- 265 CODES/STANDARDS-CSA/CMVSS

FOR ELECTRICAL TORQUE SPECIFICATIONS SEE DWG NO. 126783-01-000

FOR ELECTRICAL CALLOUTS SEE DWG NO. 121339-01-000



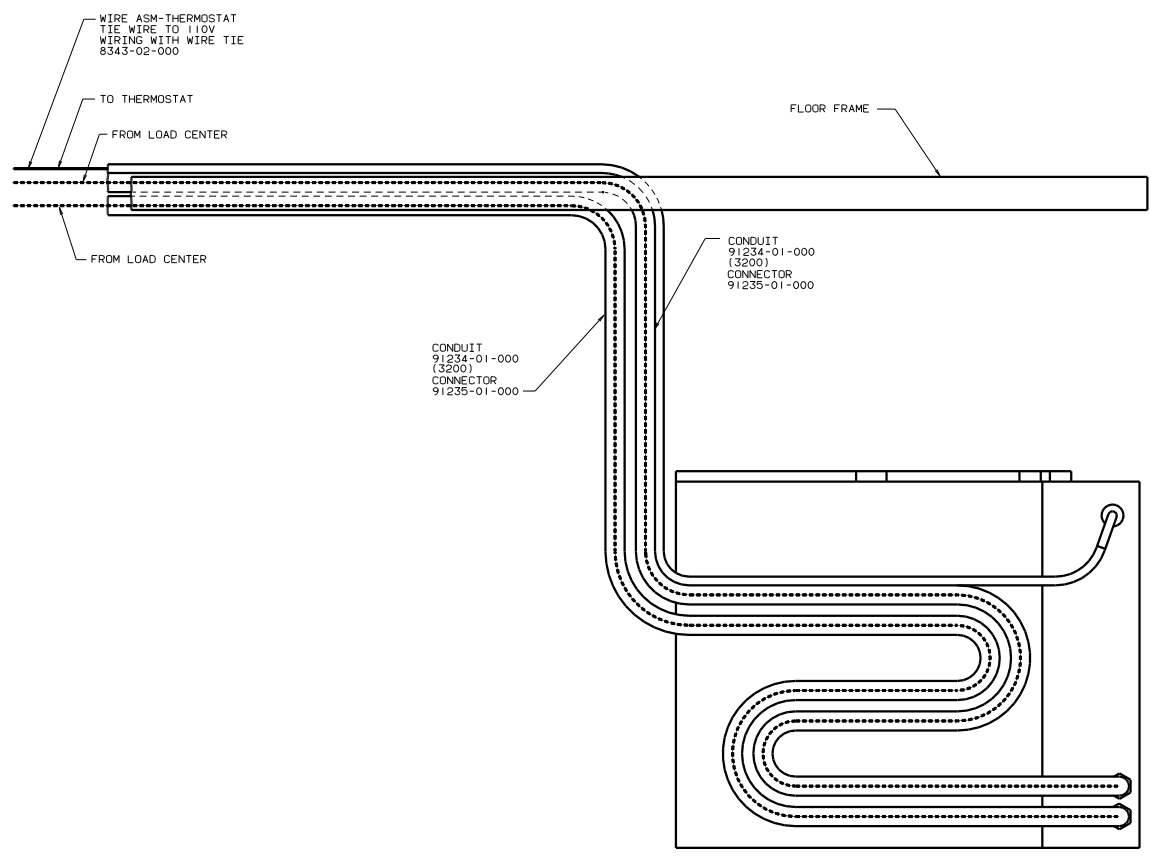


- 5. MOUNT ATS AS HIGH AS POSSIBLE WITHOUT COVERING HOLE FOR ENGINE HEATER CHORD.
- 4. PAINT EXPOSED SURFACE BLACK WITH 106112-01-000
- 3. ALL 110V STRANDED WIRE W/O TERMINALS TO BE STRIPPED 10MM AND SOLDER DIPPED.
- 2. GROUND WIRES NOT SHOWN FOR CLARITY.
- 1. ALL WIRES TO BE CLAMPED WITH IN 200 OF BOX.

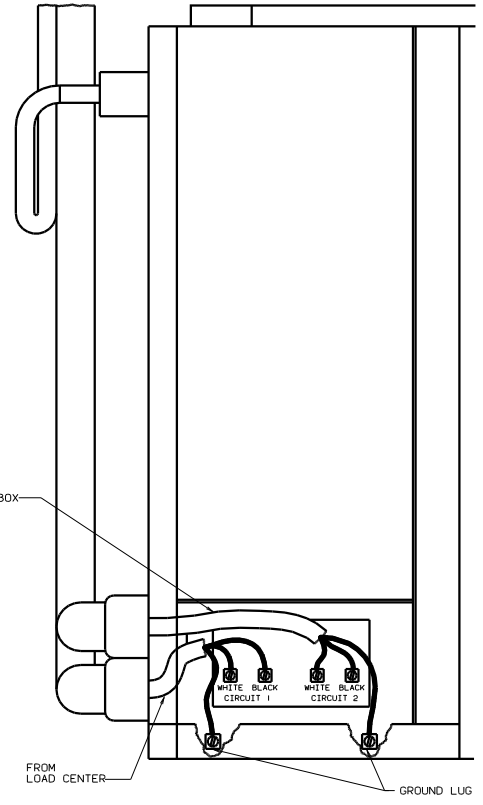
78-J ELECTRICAL SYSTEM-50 AMP  
 670 GEN-7.5KW-ONAN-QUIET DIESEL  
 265 CODES/STANDARDS-CSA/CMVSS

00 P34B 265

WIRING INSTL-RDY 110V(ATS/CA)	FIG 1.6	134134
NO. OF SHEETS 14 OF 15		



VIEW RA-RA



(265) CODES/STANDARDS-CSA/CMVSS  
 (1B1) CODES/STANDARDS USA

00 P34B (1B1) (265)

FOR ELECTRICAL TORQUE SPECIFICATIONS SEE DWG NO. 128783-01-000	(X-X)	FOR ELECTRICAL CALLOUTS SEE DWG NO. 121339-01-000
--	-------	---

TITLE: WIRING INSTL-BODY(CNTRL A/C)	
DRG NO 134134	SHEET 15 OF 15