



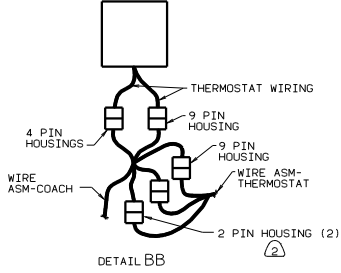
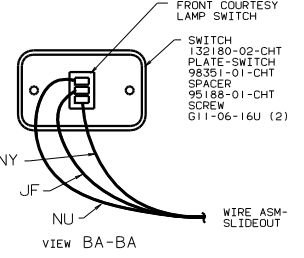
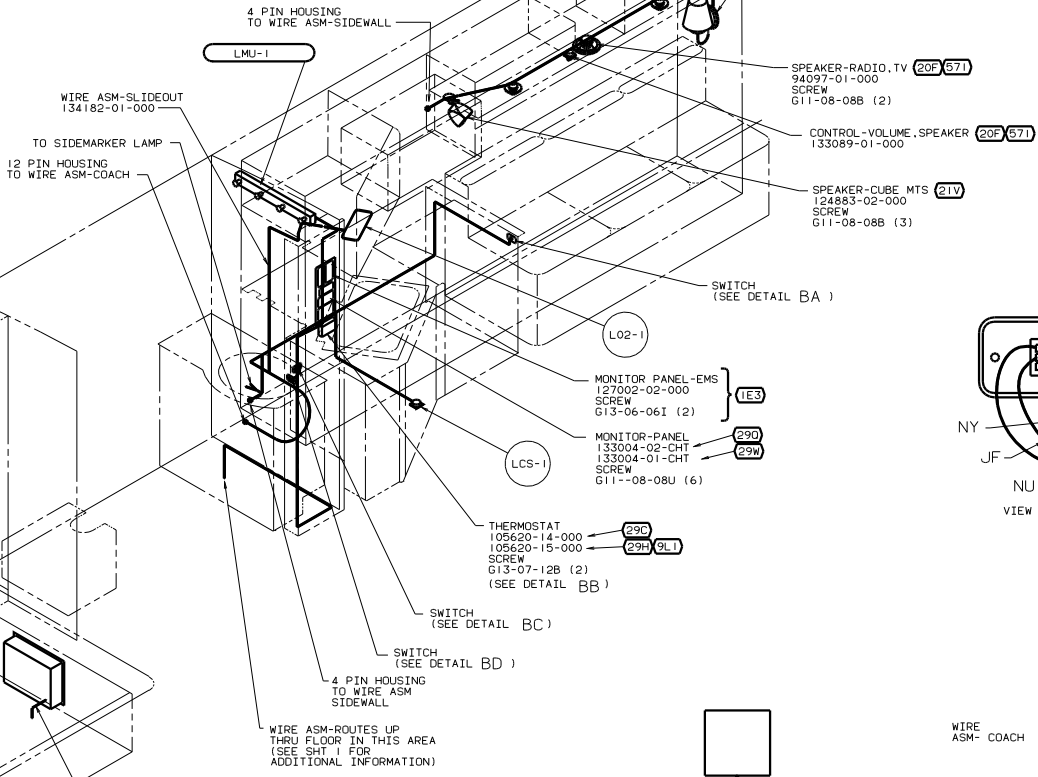
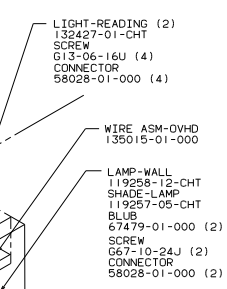
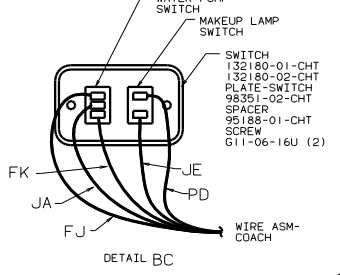
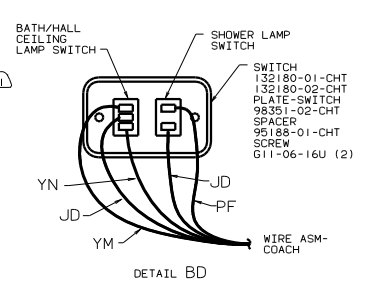
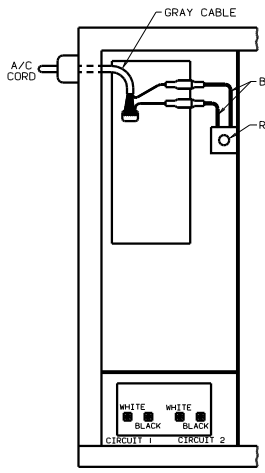
DANGER

Danger of electrical shock, burns or death. Always remove all power sources before attempting any repair, service or diagnostic work. Power can be present from shore power, generator, inverter or battery. All power sources must be disabled and secured before performing any service.



CAUTION

If you lack the skills, tools or equipment to perform diagnostic or repair work leave such work to an authorized Winnebago Industries dealer or other qualified shop.



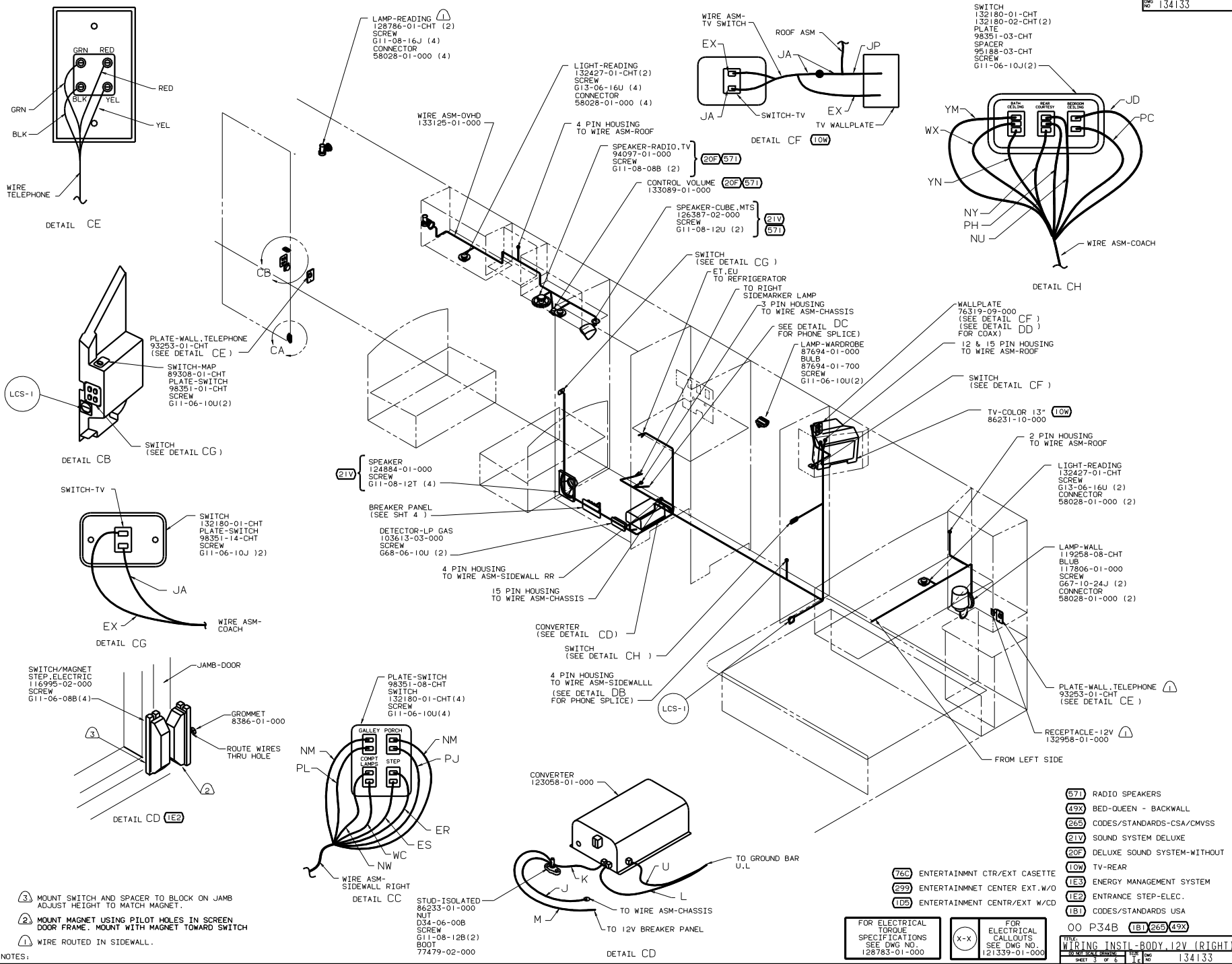
- (571) RADIO SPEAKERS
- (49X) BED-QUEEN - BACKWALL
- (29W) SOLAR PANEL/BATTERY CHRG W/O
- (290) SOLAR PANEL-10 WATT
- (29H) HEAT PUMP-A/C CENTRAL
- (29C) A/C CENTRAL
- (265) CODES/STANDARDS-CSA/CMVSS
- (21V) SOUND SYSTEM DELUXE
- (20F) DELUXE SOUND SYSTEM-WITHOUT
- (1E3) ENERGY MANAGEMENT SYSTEM
- (1B1) CODES/STANDARDS USA
- (09L) SLIDEOUT ROOM FRONT LEFT

2 WITHOUT (29L) PLUG THE TWO, TWO PIN HOUSINGS TOGETHER ON WIRE ASM-COACH.
1 CONNECT BLUE WIRES FROM RESET TO THE BLUE WIRES WITH SPADE TERMINALS ON THE A/C CORD WITH 29H 9L1 FEATURE.

FOR ELECTRICAL TORQUE SPECIFICATIONS SEE DWG NO. 128783-01-000

FOR ELECTRICAL CALLOUTS SEE DWG NO. 121339-01-000

00 P34B (1B1)(265)(49X)(09L)
WIRING INSTL-BODY, 12V(LEFT)
134133



NOTES:

③ MOUNT SWITCH AND SPACER TO BLOCK ON JAMB ADJUST HEIGHT TO MATCH MAGNET.

② MOUNT MAGNET USING PILOT HOLES IN SCREEN DOOR FRAME. MOUNT WITH MAGNET TOWARD SWITCH

① WIRE ROUTED IN SIDEWALL.

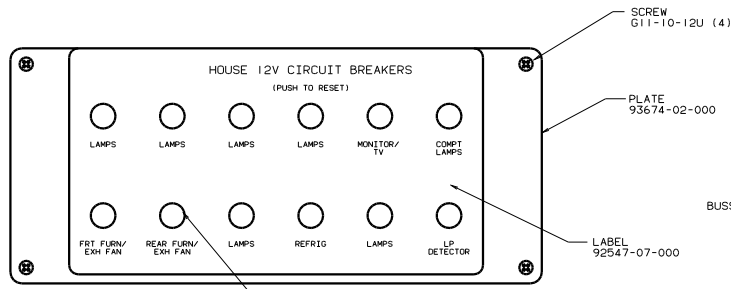
- ⑥71 RADIO SPEAKERS
- ④9X BED-QUEEN - BACKWALL
- ②65 CODES/STANDARDS-CSA/CMVSS
- ②1V SOUND SYSTEM DELUXE
- ②0F DELUXE SOUND SYSTEM-WITHOUT
- ①0W TV-REAR
- ①E3 ENERGY MANAGEMENT SYSTEM
- ①E2 ENTRANCE STEP-ELEC.
- ①B1 CODES/STANDARDS USA

FOR ELECTRICAL TORQUE SPECIFICATIONS SEE DWG NO. 128783-01-000

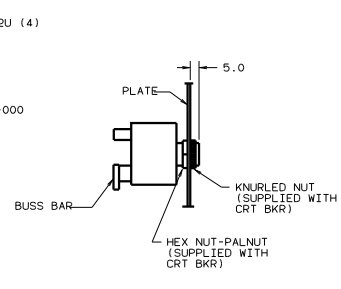
FOR ELECTRICAL CALLOUTS SEE DWG NO. 121339-01-000

WIRING INSTL - BODY 12V (RIGHT)
 SHEET 3 OF 6
 134133

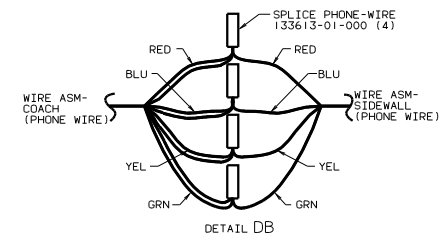
00 P34B ①B1 ②65 ④9X



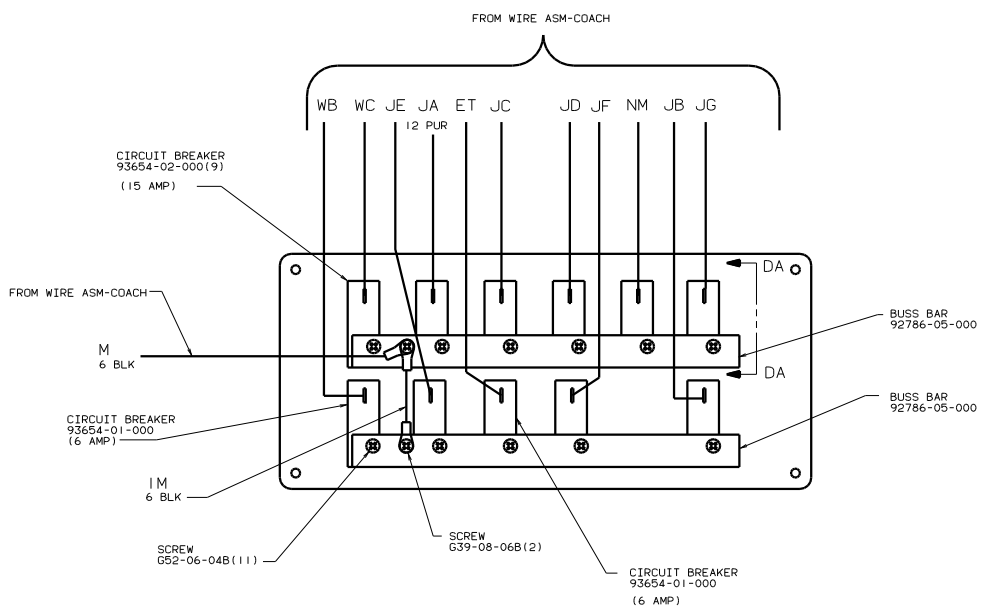
CIRCUIT BREAKER (FRONT VIEW)



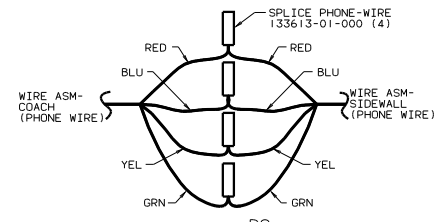
SECTION DA-DA



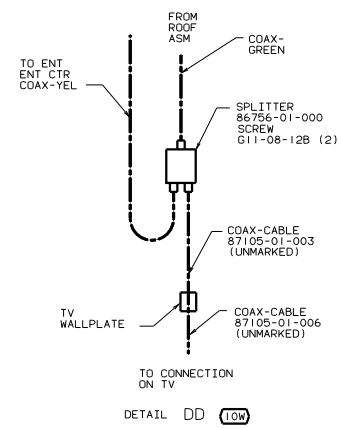
DETAIL DB



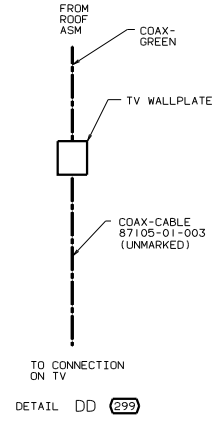
CIRCUIT BREAKER (BACK VIEW)



DETAIL DC

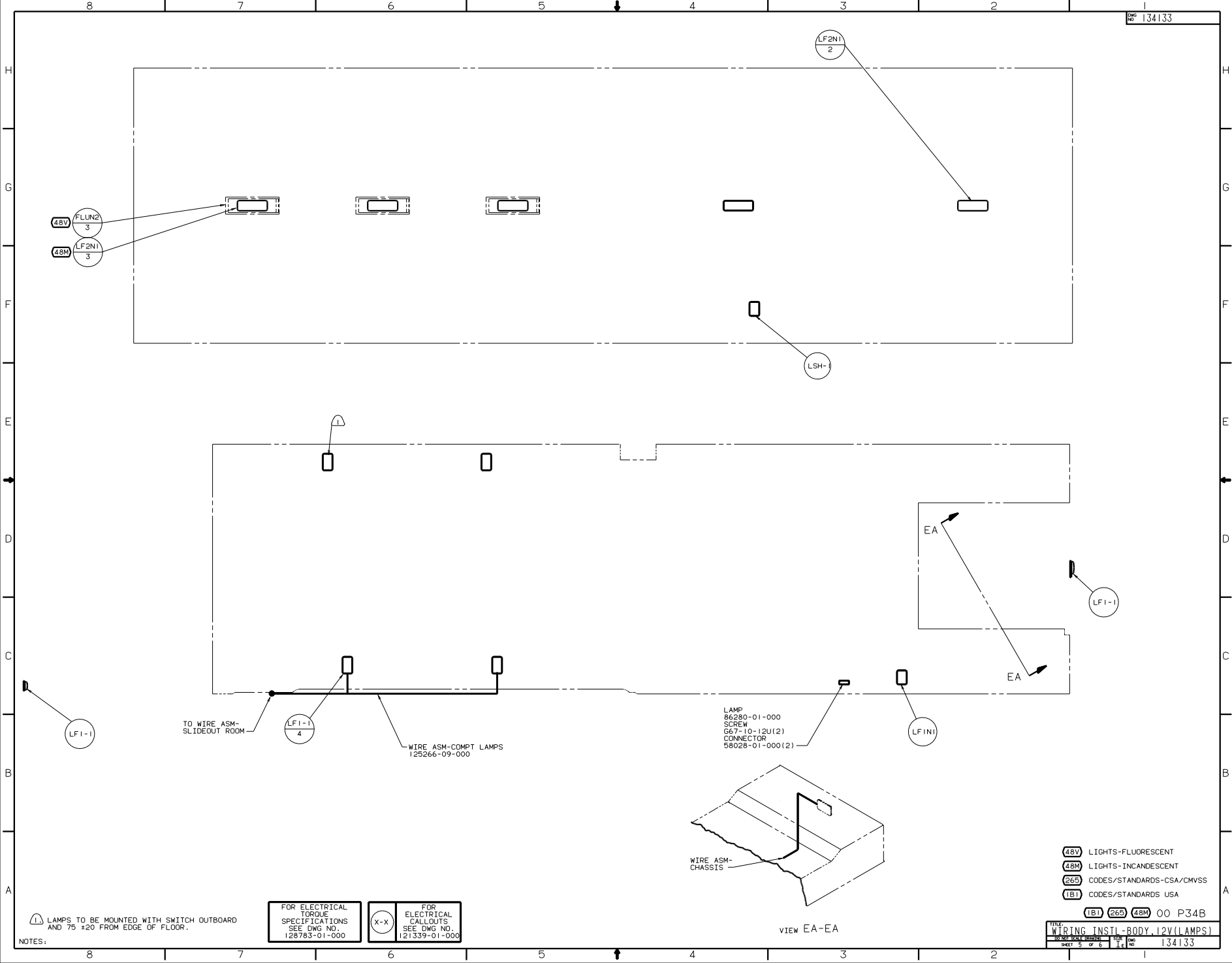


DETAIL DD (LOW)



DETAIL DD (299)

FOR ELECTRICAL TORQUE SPECIFICATIONS SEE DWG NO. 128783-01-000



48V FLUN2
3

48M LF2N1
3

LF2N1
2

LSH-1

LF1-1

LF1-1

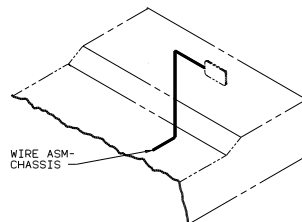
LF1-1
4

LF1NI

LAMP
86280-01-000
SCREW
GG7-10-12U(2)
CONNECTOR
58028-01-000(2)

TO WIRE ASM-
SLIDEOUT ROOM

WIRE ASM-COMPT LAMPS
125266-09-000



WIRE ASM-
CHASSIS

VIEW EA-EA

- (48V) LIGHTS-FLUORESCENT
- (48M) LIGHTS-INCANDESCENT
- (265) CODES/STANDARDS-CSA/CWVSS
- (1B1) CODES/STANDARDS USA

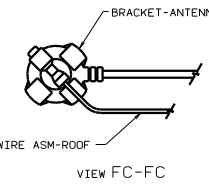
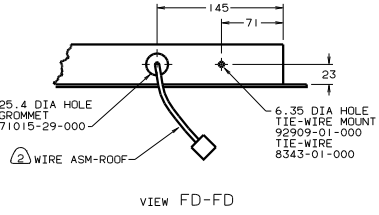
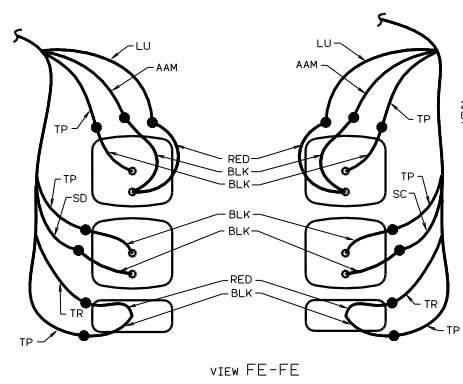
(1B1) (265) (48M) 00 P34B

FOR ELECTRICAL
TORQUE
SPECIFICATIONS
SEE DWG NO.
128783-01-000

(X-X)

FOR
ELECTRICAL
CALLOUTS
SEE DWG NO.
121339-01-000

NOTES:
LAMP TO BE MOUNTED WITH SWITCH OUTBOARD
AND 75 ±20 FROM EDGE OF FLOOR.



- LAMP-MARKER, LENS, RED 133055-01-000 (5)
- LAMP-MARKER, BASE, WHITE 133055-03-000 (5)
- BULB 36196-01-000 (5)

- WIRE ASM-BACKWALL, FL 132673-02-000

- LIGHT ASM-STOP/TURN/TAIL, RED 133054-03-000 (2)
- SCREW G11-08-12U (EXT) (4)

- LIGHT ASM-TURN/AMBER 133054-04-000 (2)
- SCREW G11-08-12U (EXT) (4)

- LAMP ASM-BACKUP 106688-01-000 (2)
- BULB 37934-01-000 (2)
- SCREW G39-08-16U (EXT) (4)

- LAMP-LICENSE 87201-01-000
- SCREW G11-06-12U (EXT) (2)

- LAMP-BRAKE, CENTER 121950-01-000
- SCREW (SUPPLIED W/LAMP)

- CONNECTOR-PLUG, TRAILER (113589-01-000) TO BE SUPPLIED IN COACH WITH (240)
- TAPE BRANCH BACK ALONG WIRE ASM WITH TAPE 8363-01-000.
- INSTALL WITH WIRES TOWARD ROOF.
- FASTEN TO VENT.
- WRAP BRACKET LEGS AROUND ANTENNA BASE.

- LAMP-PORCH 97917-01-CHT (2)
- SCREW G67-10-12U(EXT) (8)
- LAMP-PORCH 8089-02-000 (2)
- SCREW G67-06-10U(EXT) (4)
- CONNECTOR 58028-01-000 (4)
- SEAL

- PANEL-SOLAR 10 WATT 115804-01-000
- SCREW G11-08-16U(4)
- (SEE DETAIL FA)



- ANT-2

- DM-1

- WIRE ASM-CLEARANCE LAMPS 126486-03-000

- 2 PIN HOUSING TO WIRE ASM-TP, MAIN

- LAMP-MARKER, LENS, AMBER 133055-02-000 (5)
- LAMP-MARKER, BASE, WHITE 133055-03-000 (5)
- BULB 36196-01-000 (5)

- LAMP-MARKER, LENS, AMBER 111102-02-000 (2)
- LAMP-MARKER, BASE, WHITE 111102-01-000 (2)
- SCREW G11-08-12U(EXT) (4)

- LAMP 97917-01-CHT (1B1)
- SCREW G67-10-12U (EXT) (4) (1B1)
- LAMP 8089-02-000 (265)
- SCREW G67-06-10T (EXT) (2) (265)
- CONNECTOR 58028-01-000 (2)
- SEAL

- LAMP-MARKER, LENS, AMBER 111102-02-000 (2)
- LAMP-MARKER, BASE, WHITE 111102-01-000 (2)
- SCREW G11-08-12U (EXT) (4)

- ANTENNA-RADIO 90944-01-000
- EXTENDER-SHAFT, ANTENNA 109889-04-000
- BRACKET-ANTENNA GROUND 108847-01-000
- SEAL
- CABLE EXT 77069-02-000

- 76C
- 105

- TO WIRE ASM-DIGITAL ELEV SENSOR
- FROM WIRE ASM-ROOF



- DIGITAL SATELLITE ELEVATION SENSOR

FOR ELECTRICAL TORQUE SPECIFICATIONS SEE DWG NO. 128783-01-000

FOR ELECTRICAL CALLOUTS SEE DWG NO. 121339-01-000

- TRAILER HITCH (240)
- ENTERTAINMENT CENTR/EXT W/CD (105)
- ENTERTAINMENT CTR/EXT CASSETTE (76C)
- SOLAR PANEL-10 WATT (230)
- CODES/STANDARDS-CSA/CMVSS (265)
- CODES/STANDARDS USA (1B1)

00 P34B