



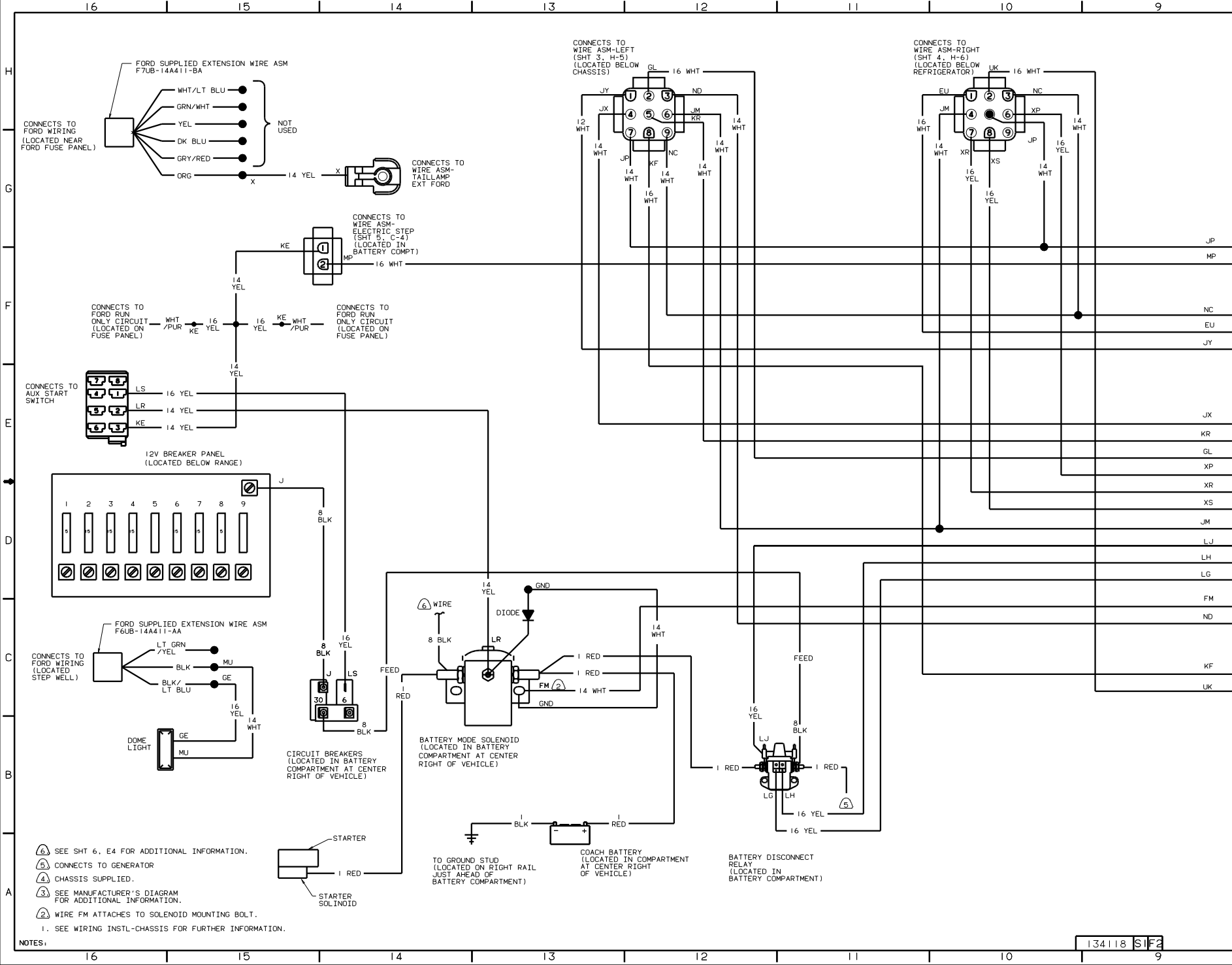
DANGER

Danger of electrical shock, burns or death. Always remove all power sources before attempting any repair, service or diagnostic work. Power can be present from shore power, generator, inverter or battery. All power sources must be disabled and secured before performing any service.

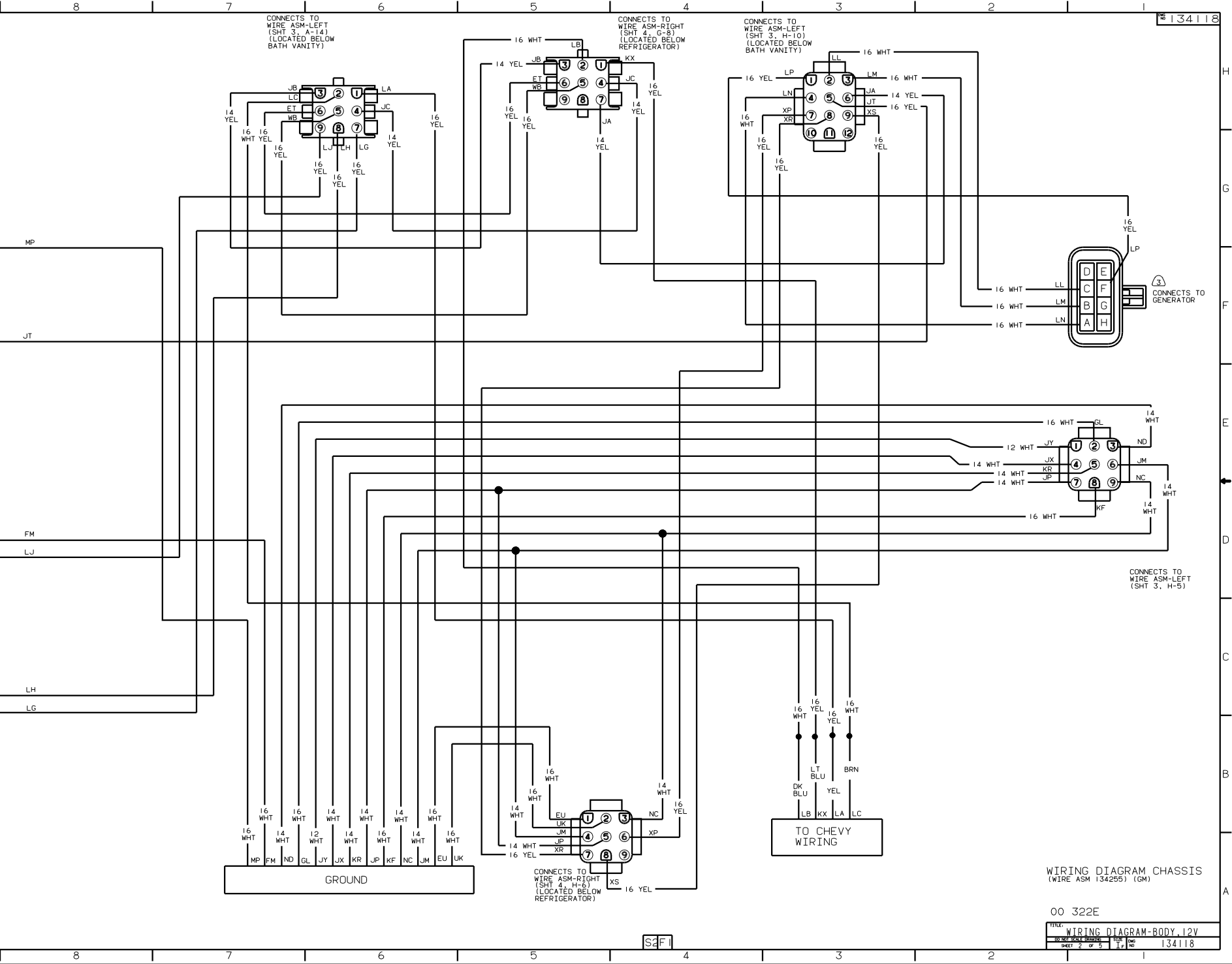


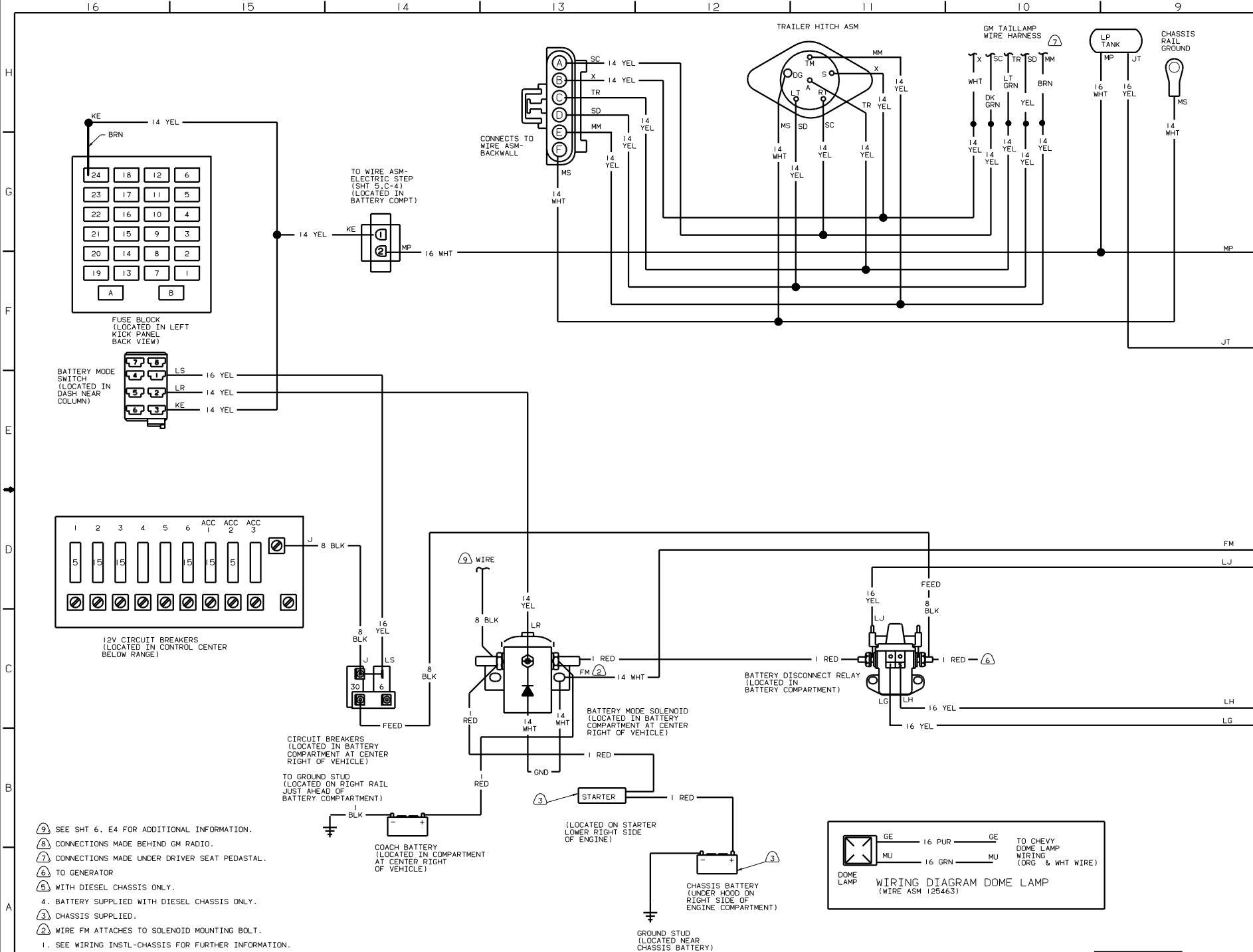
CAUTION

If you lack the skills, tools or equipment to perform diagnostic or repair work leave such work to an authorized Winnebago Industries dealer or other qualified shop.



- NOTES:
- ① SEE SHT 6, E4 FOR ADDITIONAL INFORMATION.
 - ② CONNECTS TO GENERATOR
 - ③ CHASSIS SUPPLIED.
 - ④ SEE MANUFACTURER'S DIAGRAM FOR ADDITIONAL INFORMATION.
 - ⑤ WIRE FM ATTACHES TO SOLENOID MOUNTING BOLT.
1. SEE WIRING INSTL-CHASSIS FOR FURTHER INFORMATION.





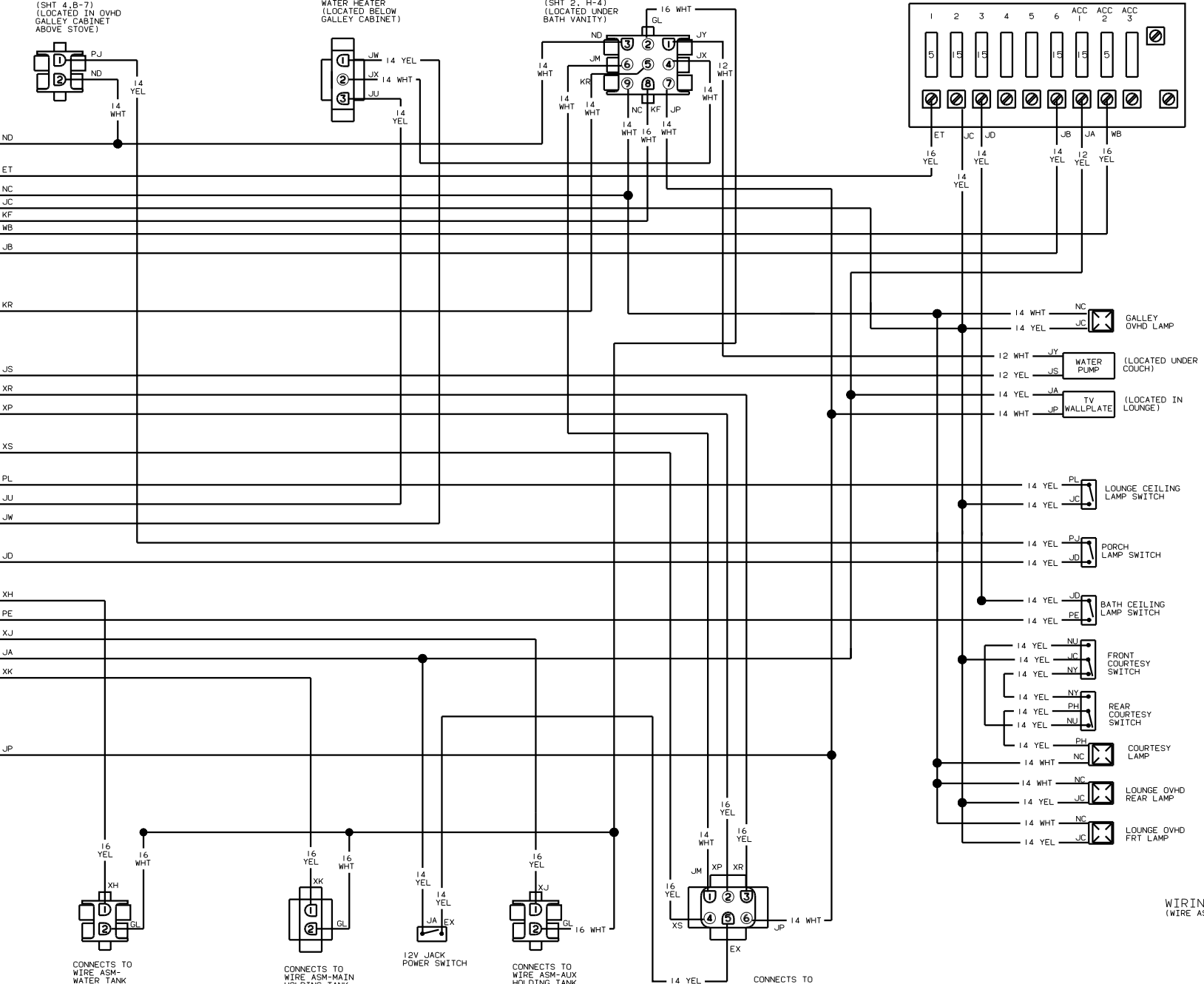
- NOTES:
- ① SEE SHT 6, E4 FOR ADDITIONAL INFORMATION.
 - ② CONNECTIONS MADE BEHIND GM RADIO.
 - ③ CONNECTIONS MADE UNDER DRIVER SEAT PEDASTAL.
 - ④ TO GENERATOR
 - ⑤ WITH DIESEL CHASSIS ONLY.
 - ⑥ BATTERY SUPPLIED WITH DIESEL CHASSIS ONLY.
 - ⑦ CHASSIS SUPPLIED.
 - ⑧ WIRE FM ATTACHES TO SOLENOID MOUNTING BOLT.
 1. SEE WIRING INSTL-CHASSIS FOR FURTHER INFORMATION.

CONNECTS TO WIRE ASM-PORCH LAMP (SHT 4,B-7) (LOCATED IN OVHD GALLEY CABINET ABOVE STOVE)

CONNECTS TO WATER HEATER (LOCATED BELOW GALLEY CABINET)

CONNECTS TO WIRE ASM-CHASSIS (SHT 1 F-6) (SHT 2, H-4) (LOCATED UNDER BATH VANITY)

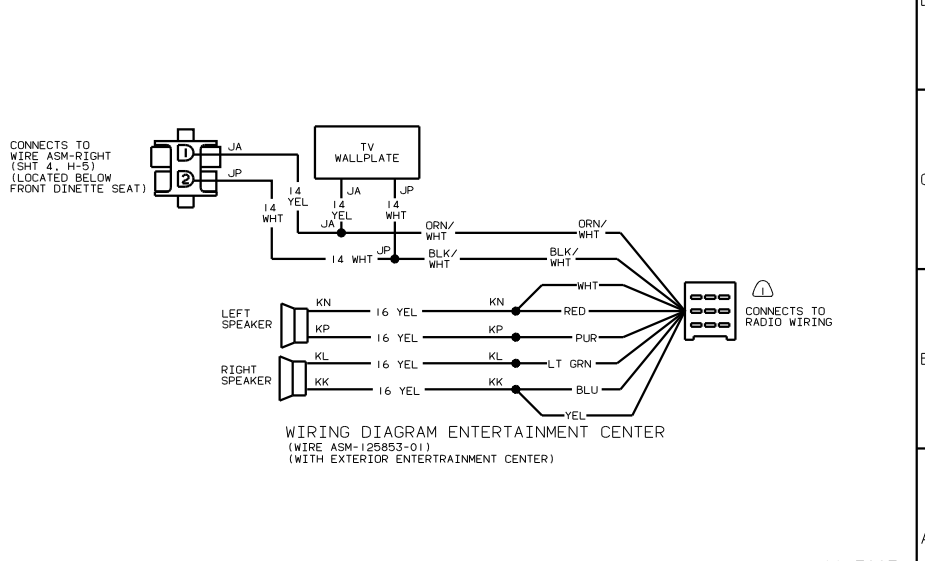
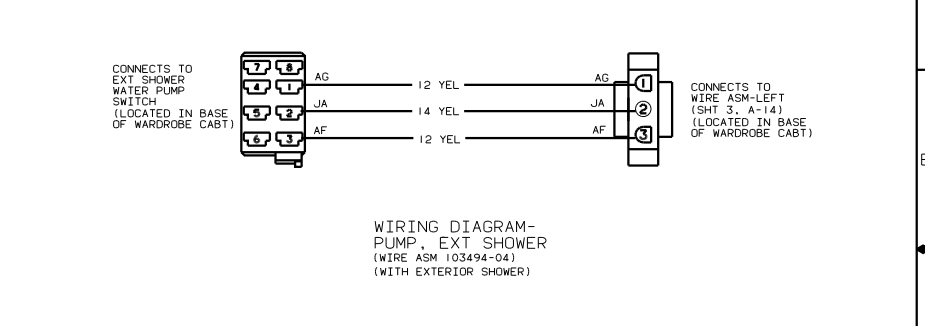
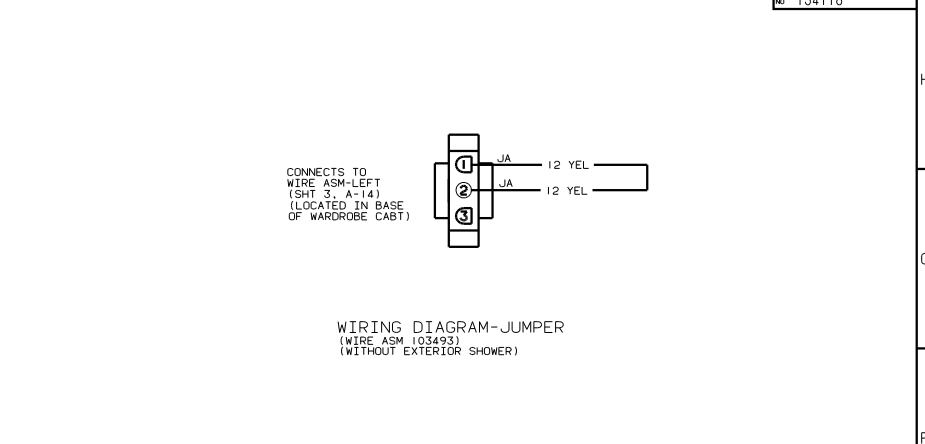
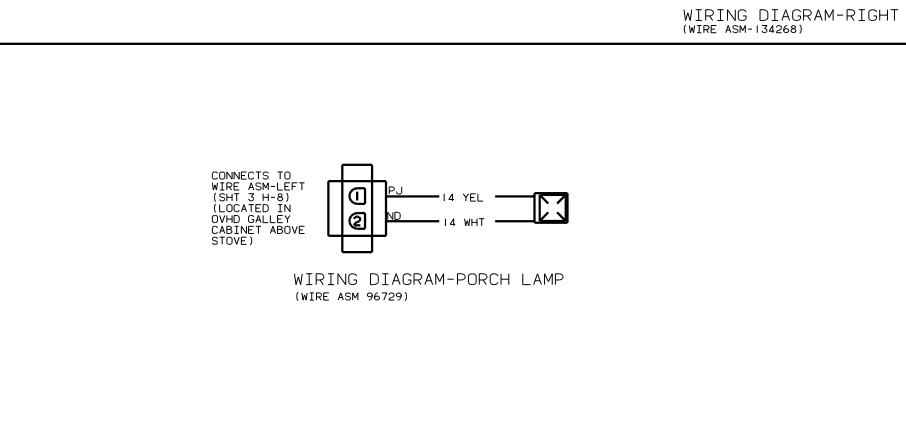
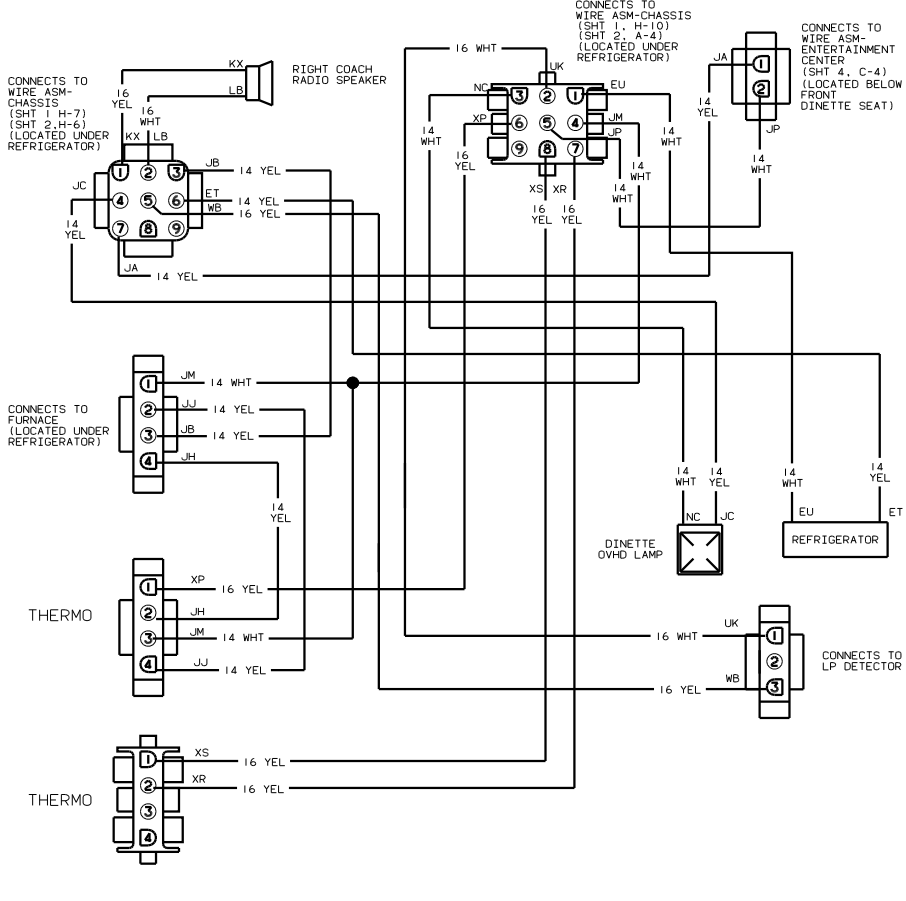
(LOCATED IN WARDROBE CABINET)



WIRING DIAGRAM-LEFT (WIRE ASM 134121)

00 322E

S.F.



NOTES: (1) SEE MANUFACTURER'S DIAGRAM FOR ADDITIONAL INFORMATION.

