



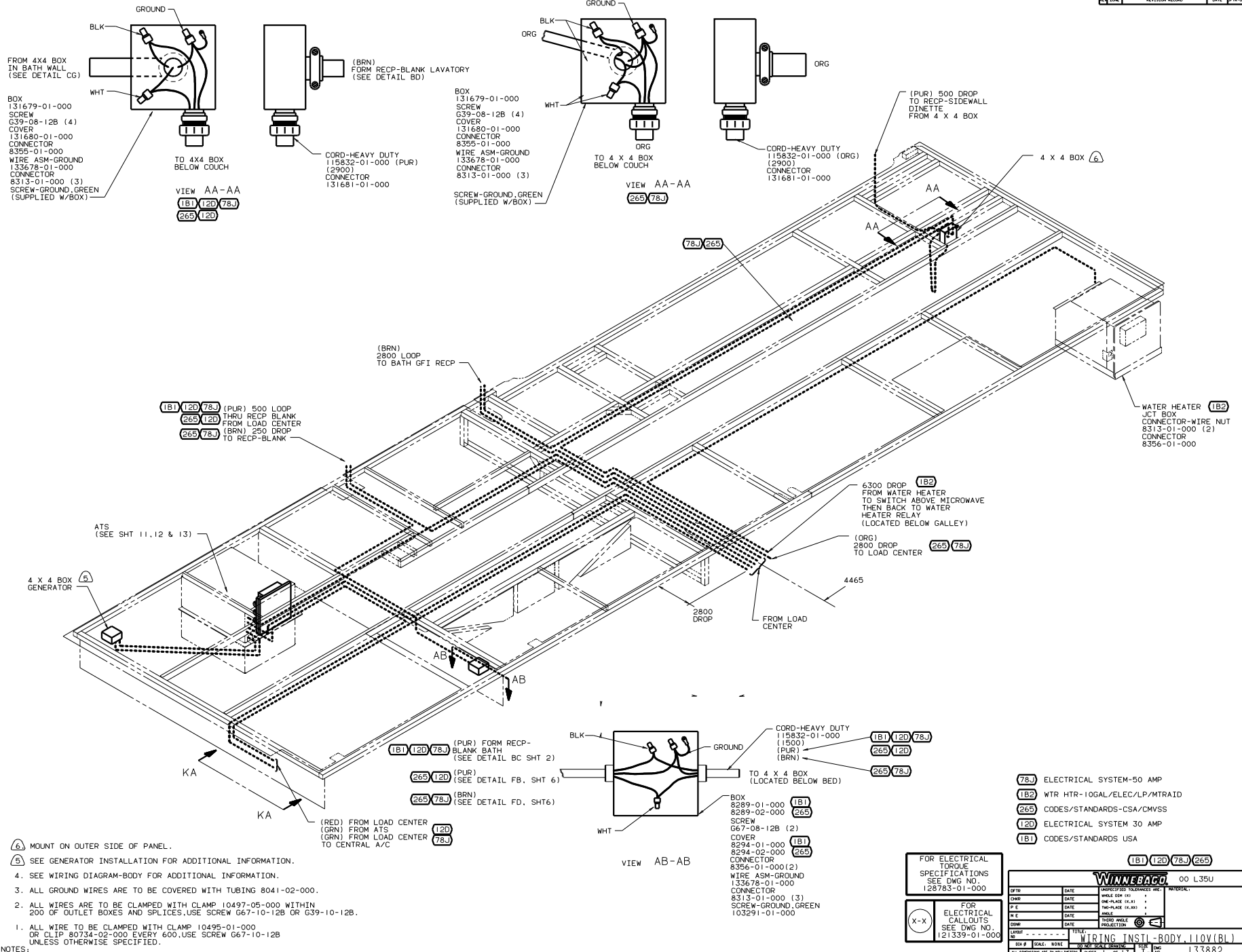
DANGER

Danger of electrical shock, burns or death. Always remove all power sources before attempting any repair, service or diagnostic work. Power can be present from shore power, generator, inverter or battery. All power sources must be disabled and secured before performing any service.



CAUTION

If you lack the skills, tools or equipment to perform diagnostic or repair work leave such work to an authorized Winnebago Industries dealer or other qualified shop.



FROM 4X4 BOX
 IN BATH WALL
 (SEE DETAIL CG)

BLK
 WHT

BOX
 131679-01-000
 SCREW
 G39-08-12B (4)
 COVER
 131680-01-000
 CONNECTOR
 8355-01-000
 WIRE ASM-GROUND
 133678-01-000
 CONNECTOR
 8313-01-000 (3)
 SCREW-GROUND, GREEN
 (SUPPLIED W/BOX)

TO 4X4 BOX
 BELOW COUCH

VIEW AA-AA
 1B1 12D 78J
 265 12D

(BRN)
 FORM RECP-BLANK LAVATORY
 (SEE DETAIL BD)

CORD-HEAVY DUTY
 115832-01-000 (PUR)
 (2900)
 CONNECTOR
 131681-01-000

BOX
 131679-01-000
 SCREW
 G39-08-12B (4)
 COVER
 131680-01-000
 CONNECTOR
 8355-01-000
 WIRE ASM-GROUND
 133678-01-000
 CONNECTOR
 8313-01-000 (3)
 SCREW-GROUND, GREEN
 (SUPPLIED W/BOX)

TO 4 X 4 BOX
 BELOW COUCH

VIEW AA-AA
 265 78J

(PUR) 500 DROP
 TO RECP-SIDEWALL
 DINETTE
 FROM 4 X 4 BOX

CORD-HEAVY DUTY
 115832-01-000 (ORG)
 (2900)
 CONNECTOR
 131681-01-000

4 X 4 BOX

1B1 12D 78J (PUR) 500 LOOP
 THRU RECP BLANK
 FROM LOAD CENTER
 (BRN) 250 DROP
 TO RECP-BLANK

265 12D
 265 78J

(BRN)
 2800 LOOP
 TO BATH GFI RECP

6300 DROP
 FROM WATER HEATER
 TO SWITCH ABOVE MICROWAVE
 THEN BACK TO WATER
 HEATER RELAY
 (LOCATED BELOW GALLEY)

(ORG)
 2800 DROP
 TO LOAD CENTER

265 78J

WATER HEATER
 JCT BOX
 CONNECTOR-WIRE NJT
 8313-01-000 (2)
 CONNECTOR
 8356-01-000

1B1 12D 78J (PUR) FORM RECP-
 BLANK BATH
 (SEE DETAIL BC SHT 2)

265 12D (PUR)
 (SEE DETAIL FB, SHT 6)

265 78J (BRN)
 (SEE DETAIL FD, SHT 6)

(RED) FROM LOAD CENTER
 (GRN) FROM ATS
 (GRN) FROM LOAD CENTER
 TO CENTRAL A/C

12D
 78J

CORD-HEAVY DUTY
 115832-01-000
 (1500)
 (PUR)
 (BRN)

1B1 12D 78J
 265 12D
 265 78J

TO 4 X 4 BOX
 (LOCATED BELOW BED)

BOX
 8289-01-000 1B1
 8289-02-000 265
 SCREW
 G67-08-12B (2)
 COVER
 8294-01-000 1B1
 8294-02-000 265
 CONNECTOR
 8356-01-000 (2)
 WIRE ASM-GROUND
 133678-01-000
 CONNECTOR
 8313-01-000 (3)
 SCREW-GROUND, GREEN
 103291-01-000

VIEW AB-AB

- 78J ELECTRICAL SYSTEM-50 AMP
- 1B2 WTR HTR-10GAL/ELEC/LP-MTRAITD
- 265 CODES/STANDARDS-CSA/CMVSS
- 12D ELECTRICAL SYSTEM 30 AMP
- 1B1 CODES/STANDARDS USA

- 6. MOUNT ON OUTER SIDE OF PANEL.
 - 5. SEE GENERATOR INSTALLATION FOR ADDITIONAL INFORMATION.
 - 4. SEE WIRING DIAGRAM-BODY FOR ADDITIONAL INFORMATION.
 - 3. ALL GROUND WIRES ARE TO BE COVERED WITH TUBING 8041-02-000.
 - 2. ALL WIRES ARE TO BE CLAMPED WITH CLAMP 10497-05-000 WITHIN 200 OF OUTLET BOXES AND SPLICES, USE SCREW G67-10-12B OR G39-10-12B.
 - 1. ALL WIRE TO BE CLAMPED WITH CLAMP 10495-01-000 OR CLIP 80734-02-000 EVERY 600, USE SCREW G67-10-12B UNLESS OTHERWISE SPECIFIED.
- NOTES:

FOR ELECTRICAL
 TORQUE
 SPECIFICATIONS
 SEE DWG NO.
 128783-01-000

(X-X)
 FOR
 ELECTRICAL
 CALLOUTS
 SEE DWG NO.
 121339-01-000

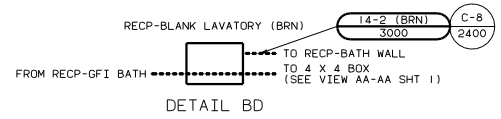
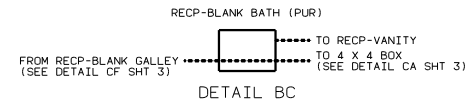
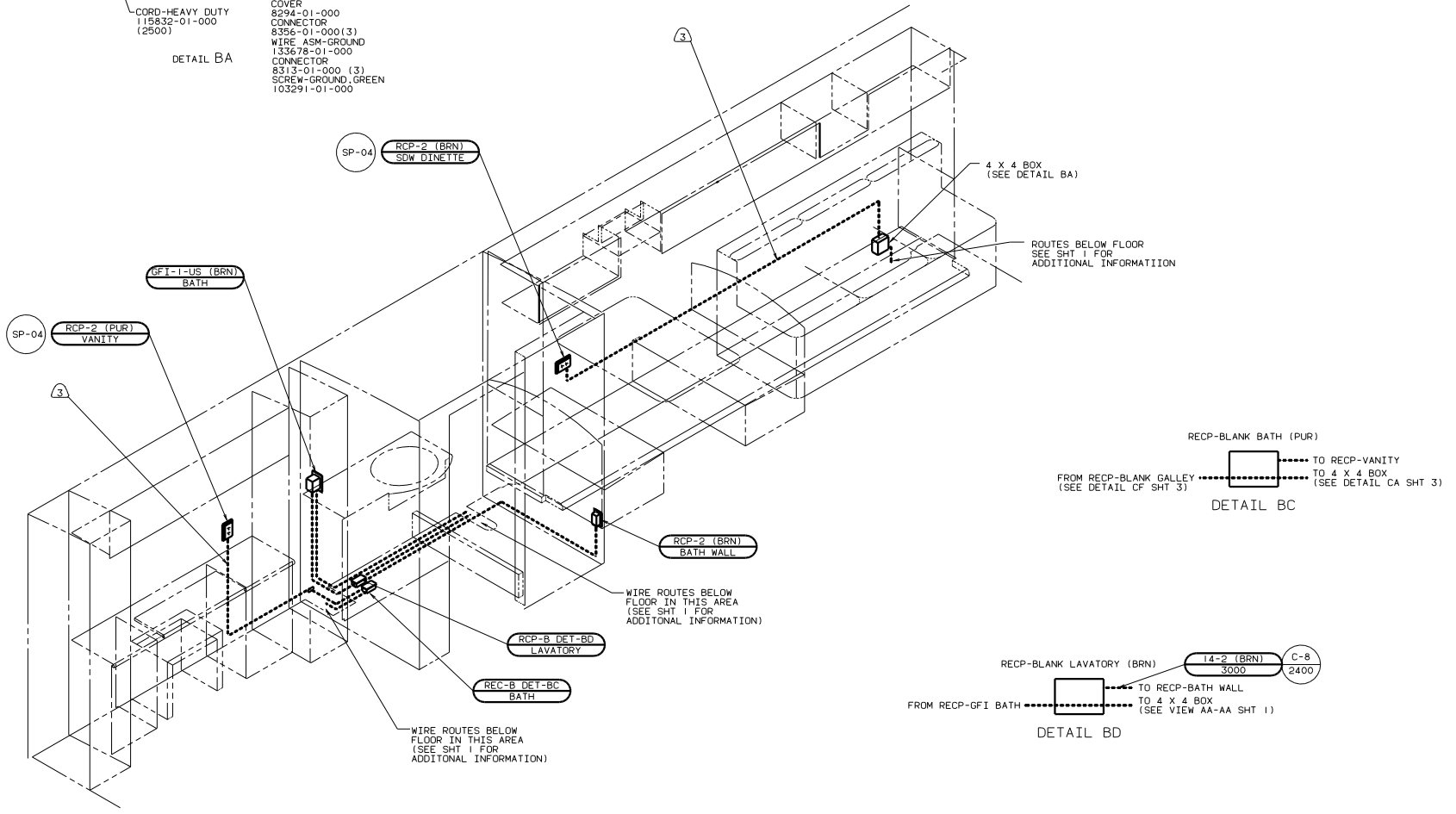
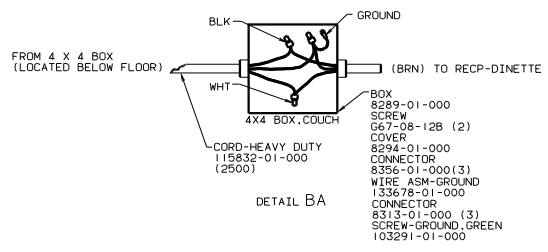
DATE		UNSPECIFIED TOLERANCES ARE:		MATERIAL	
DATE	DATE	ONE-PLACE (1:1)	ONE-PLACE (1:1)	ONE-PLACE (1:1)	ONE-PLACE (1:1)
DATE	DATE	ONE-PLACE (1:1)	ONE-PLACE (1:1)	ONE-PLACE (1:1)	ONE-PLACE (1:1)
DATE	DATE	ONE-PLACE (1:1)	ONE-PLACE (1:1)	ONE-PLACE (1:1)	ONE-PLACE (1:1)
DATE	DATE	ONE-PLACE (1:1)	ONE-PLACE (1:1)	ONE-PLACE (1:1)	ONE-PLACE (1:1)
DATE	DATE	ONE-PLACE (1:1)	ONE-PLACE (1:1)	ONE-PLACE (1:1)	ONE-PLACE (1:1)
DATE	DATE	ONE-PLACE (1:1)	ONE-PLACE (1:1)	ONE-PLACE (1:1)	ONE-PLACE (1:1)
DATE	DATE	ONE-PLACE (1:1)	ONE-PLACE (1:1)	ONE-PLACE (1:1)	ONE-PLACE (1:1)
DATE	DATE	ONE-PLACE (1:1)	ONE-PLACE (1:1)	ONE-PLACE (1:1)	ONE-PLACE (1:1)
DATE	DATE	ONE-PLACE (1:1)	ONE-PLACE (1:1)	ONE-PLACE (1:1)	ONE-PLACE (1:1)

WINNEBAGO OO L35U

WIRING INSTL-BODY, 110V(1B1)

SHEET 1 OF 13

REF: 130513



(44X) 09L

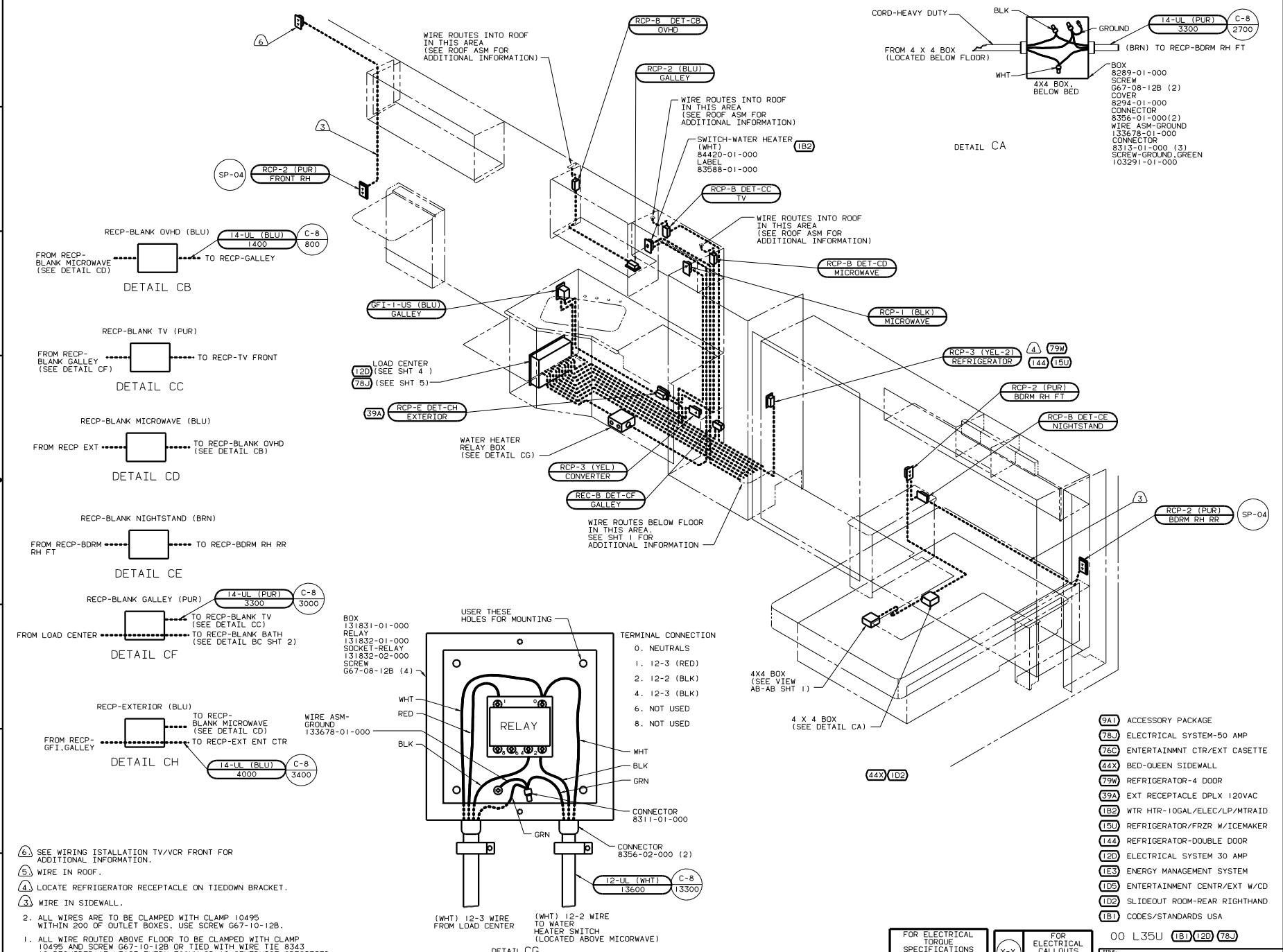
- (51B) HAIR DRYER
- (78J) ELECTRICAL SYSTEM-50 AMP
- (26L) COFFEE MAKER
- (44X) BED-QUEEN SIDEWALL
- (12D) ELECTRICAL SYSTEM 30 AMP
- (1E3) ENERGY MANAGEMENT SYSTEM
- (1B1) CODES/STANDARDS USA
- (09L) SLIDEOUT ROOM FRONT LEFT

- NOTES:
1. ALL WIRE ROUTED ABOVE FLOOR TO BE CLAMPED WITH CLAMP 10495 AND SCREW 667-10-12B OR TIED WITH WIRE TIE 8343 AS REQUIRED AT LEAST EVERY 700MM OR AS OTHERWISE SPECIFIED.
 2. ALL WIRES ARE TO BE CLAMPED WITH CLAMP 10495 WITHIN 200 OF OUTLET BOXES, USE SCREW 667-10-12B.
 3. WIRE IN SIDEWALL.

FOR ELECTRICAL TORQUE SPECIFICATIONS SEE DWG NO. 128763-01-000

FOR ELECTRICAL CALLOUTS SEE DWG NO. 121339-01-000

00 L35U (1B1) (78J) (12D)
 WIRING INSTL-RDLY (L30/50US)
 SHEET 2 OF 13



DETAIL CA

DETAIL CB

DETAIL CC

DETAIL CD

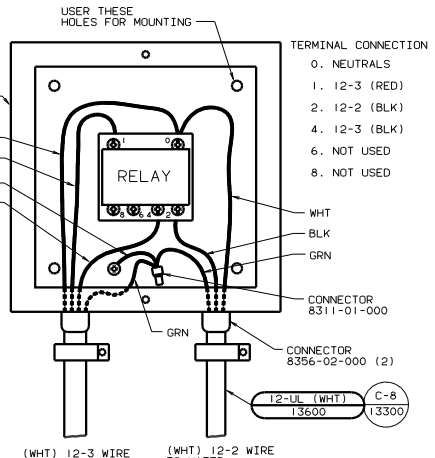
DETAIL CE

DETAIL CF

DETAIL CH

DETAIL CG

6. SEE WIRING INSTALLATION TV/VCR FRONT FOR ADDITIONAL INFORMATION.
 5. WIRE IN ROOF.
 4. LOCATE REFRIGERATOR RECEPTACLE ON TIEDOWN BRACKET.
 3. WIRE IN SIDEWALL.
 2. ALL WIRES ARE TO BE CLAMPED WITH CLAMP 10495 WITHIN 200 OF OUTLET BOXES. USE SCREW 667-10-12B.
 1. ALL WIRE ROUTED ABOVE FLOOR TO BE CLAMPED WITH CLAMP 10495 AND SCREW 667-10-12B OR TIED WITH WIRE TIE 8343 AS REQUIRED AT LEAST EVERY 700MM OR AS OTHERWISE SPECIFIED.



TERMINAL CONNECTION

0. NEUTRALS
1. 12-3 (RED)
2. 12-2 (BLK)
4. 12-3 (BLK)
6. NOT USED
8. NOT USED

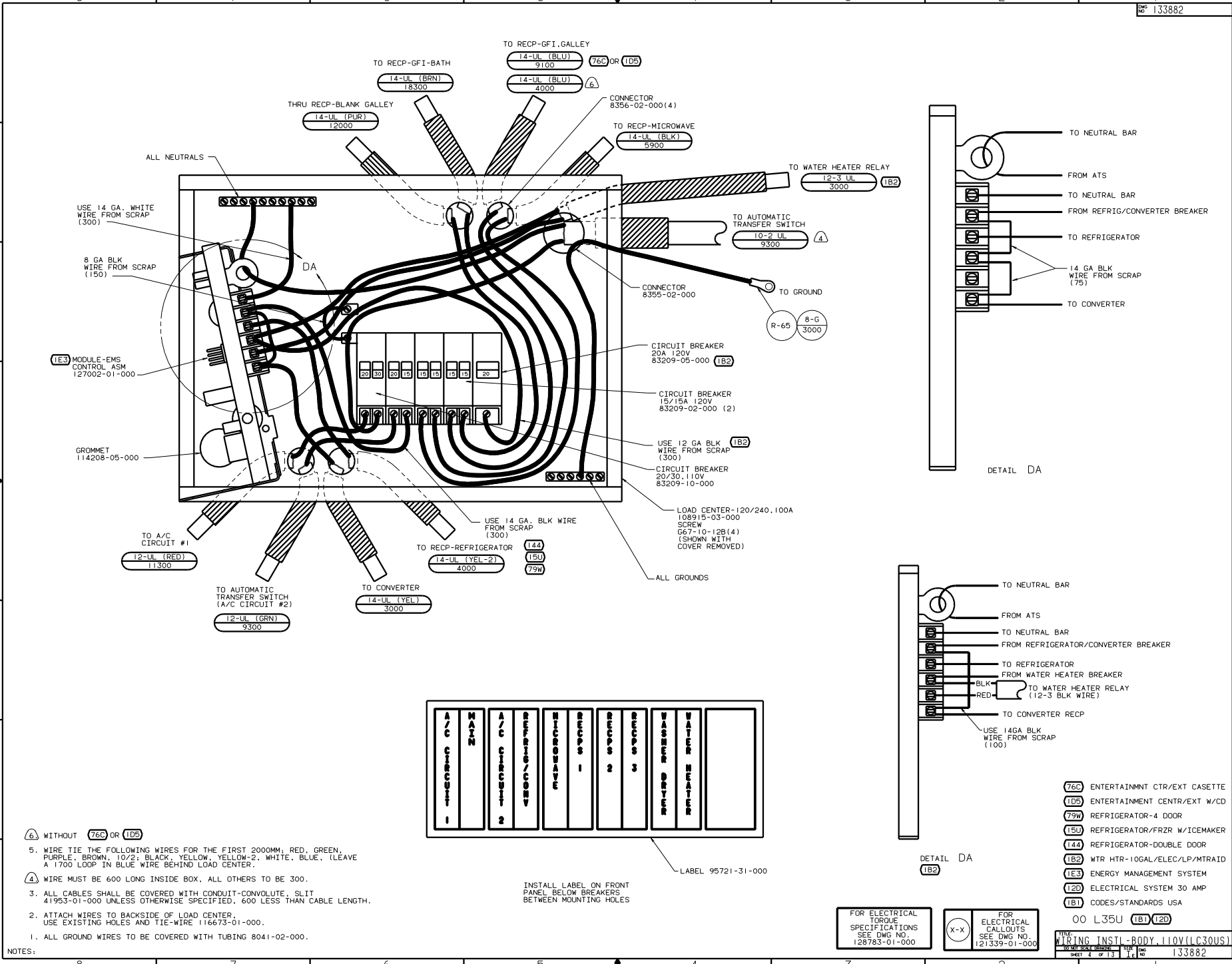
- (9A) ACCESSORY PACKAGE
- (78) ELECTRICAL SYSTEM-50 AMP
- (76) ENTERTAINMNT CTR/EXT CASSETTE
- (44) BED-QUEEN SIDEWALL
- (79) REFRIGERATOR-4 DOOR
- (39) EXT RECEPTACLE DPLX 120VAC
- (18) WTR HTR-10GAL/ELEC/LP/MTRAITD
- (15) REFRIGERATOR/FRZR W/ICEMAKER
- (14) REFRIGERATOR-DOUBLE DOOR
- (12) ELECTRICAL SYSTEM 30 AMP
- (13) ENERGY MANAGEMENT SYSTEM
- (10) ENTERTAINMENT CENTR/EXT W/CD
- (1D) SLIDEOUT ROOM-REAR RIGHTHAND
- (1B) CODES/STANDARDS USA

00 L35U (1B) (12) (78)

FOR ELECTRICAL TORQUE SPECIFICATIONS SEE DWG NO. 128783-01-000

X-X FOR ELECTRICAL CALLOUTS SEE DWG NO. 121339-01-000

FOR WIRING INSTL-BODY. (R30/50US)
 sheet 3 of 13
 133882



6. WITHOUT 76C OR 1D5
5. WIRE TIE THE FOLLOWING WIRES FOR THE FIRST 2000MM; RED, GREEN, PURPLE, BROWN, 10/2; BLACK, YELLOW, YELLOW-2, WHITE, BLUE. (LEAVE A 1700 LOOP IN BLUE WIRE BEHIND LOAD CENTER.)
4. WIRE MUST BE 600 LONG INSIDE BOX, ALL OTHERS TO BE 300.
3. ALL CABLES SHALL BE COVERED WITH CONDUIT-CONVOLUTE, SLIT 41953-01-000 UNLESS OTHERWISE SPECIFIED. 600 LESS THAN CABLE LENGTH.
2. ATTACH WIRES TO BACKSIDE OF LOAD CENTER. USE EXISTING HOLES AND TIE-WIRE 116673-01-000.
1. ALL GROUND WIRES TO BE COVERED WITH TUBING 8041-02-000.

INSTALL LABEL ON FRONT PANEL BELOW BREAKERS BETWEEN MOUNTING HOLES

LABEL 95721-31-000

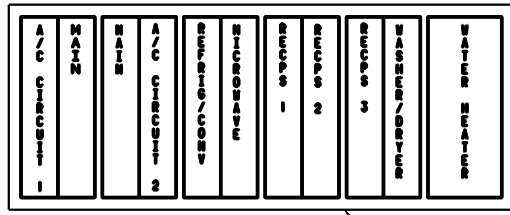
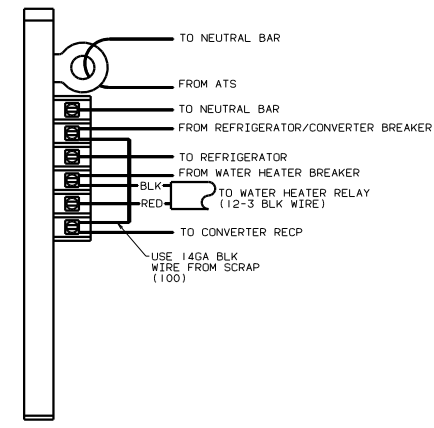
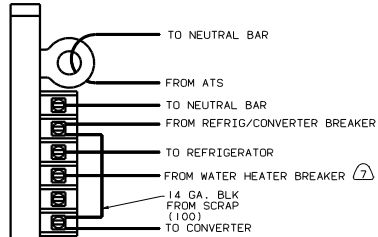
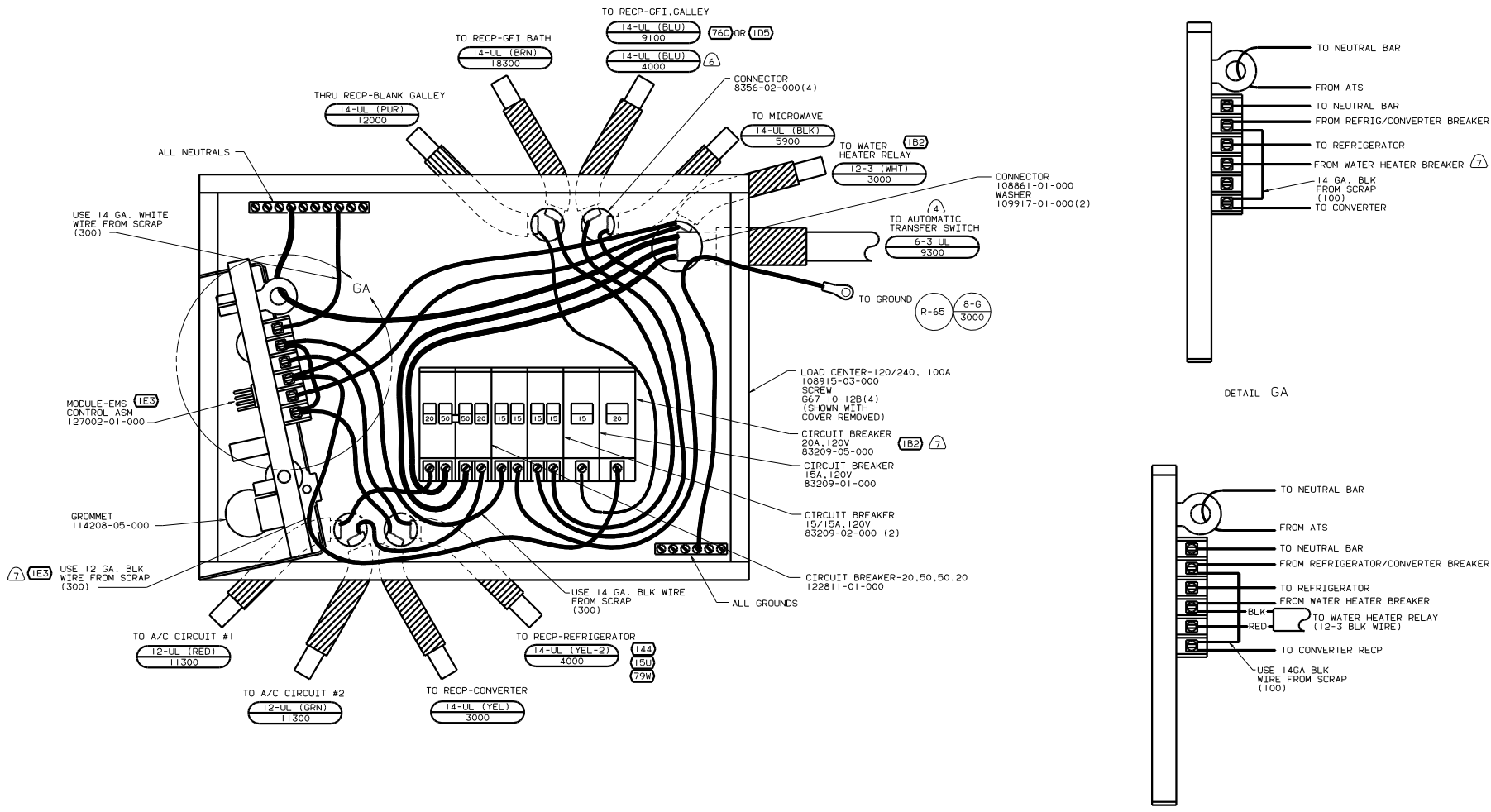
- 76C ENTERTAINMENT CTR/EXT CASSETTE
- 1D5 ENTERTAINMENT CENTR/EXT W/CD
- 79W REFRIGERATOR-4 DOOR
- 15U REFRIGERATOR/FRZR W/ICEMAKER
- 144 REFRIGERATOR-DOUBLE DOOR
- 1B2 WTR HTR-10GAL/ELEC/LP/MTR/AID
- 1E3 ENERGY MANAGEMENT SYSTEM
- 1B1 ELECTRICAL SYSTEM 30 AMP
- 1B1 CODES/STANDARDS USA

00 L35U (1B1) (120)

FOR ELECTRICAL TORQUE SPECIFICATIONS SEE DWG NO. 128783-01-000

FOR ELECTRICAL CALLOUTS SEE DWG NO. 121339-01-000

WIRING INSTL-BODY, 110V(LC30US)
 SHEET 4 OF 13
 133882



- 7 THIS BREAKER MUST BE INSTALLED AND WIRED TO EMS EVEN WITHOUT (1B2)
- 6 WITHOUT (76C OR 1D5)
- 5 WIRE TIE THE FOLLOWING WIRES FOR THE FIRST 2000MM: RED, GREEN, PURPLE, BROWN, 10/2; BLACK, YELLOW, YELLOW-2, WHITE, BLUE. (LEAVE A 1700 LOOP IN BLUE WIRE BEHIND LOAD CENTER.)
- 4 WIRE MUST BE 600 LONG INSIDE BOX, ALL OTHERS TO BE 300.
- 3 ALL CABLES SHALL BE COVERED WITH CONDUIT-CONVOLUTE, SLIT 41953-01-000 UNLESS OTHERWISE SPECIFIED. 600 LESS THAN CABLE LENGTH.
- 2 ATTACH WIRES TO BACKSIDE OF LOAD CENTER. USE EXISTING HOLES AND TIE-WIRE 116673-01-000.
- 1 ALL GROUND WIRES TO BE COVERED WITH TUBING 8041-02-000.

INSTALL LABEL ON FRONT PANEL BELOW BREAKERS BETWEEN MOUNTING HOLES

LABEL 95721-33-000

- (76C) ENTERTAINMENT CTR/EXT CASETTE
- (1D5) ENTERTAINMENT CENTR/EXT W/CD
- (78J) ELECTRICAL SYSTEM-50 AMP
- (79W) REFRIGERATOR-4 DOOR
- (15U) REFRIGERATOR/FRZR W/ICEMAKER
- (144) REFRIGERATOR-DOUBLE DOOR
- (1E3) ENERGY MANAGEMENT SYSTEM
- (1B2) WTR HTR-10GAL/ELEC/LP/MTRAIID
- (1B1) CODES/STANDARDS USA

FOR ELECTRICAL TORQUE SPECIFICATIONS SEE DWG NO. 128783-01-000

FOR ELECTRICAL CALLOUTS SEE DWG NO. 121339-01-000

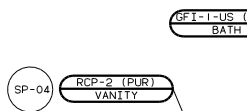
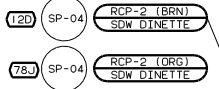
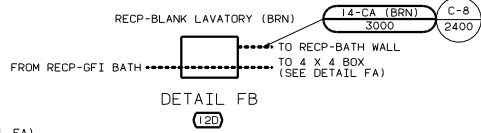
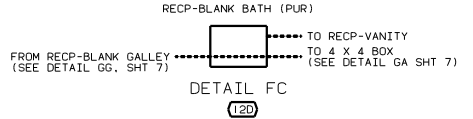
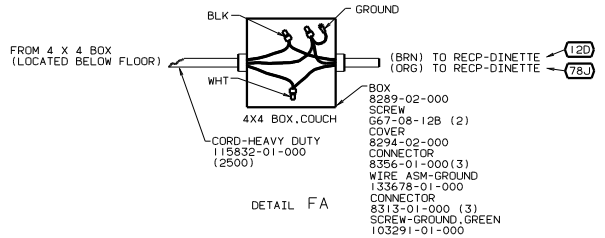
00 L35U (1B1) (78J)

WIRING INSTL-BODY, 110V(1L50US)

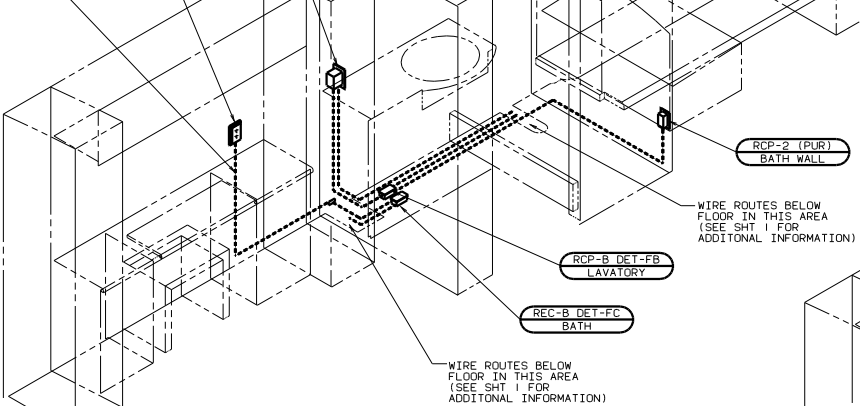
30 28 26 24 22 20 18 16 14 12 10 8 6 4 2

SHEET 5 OF 13

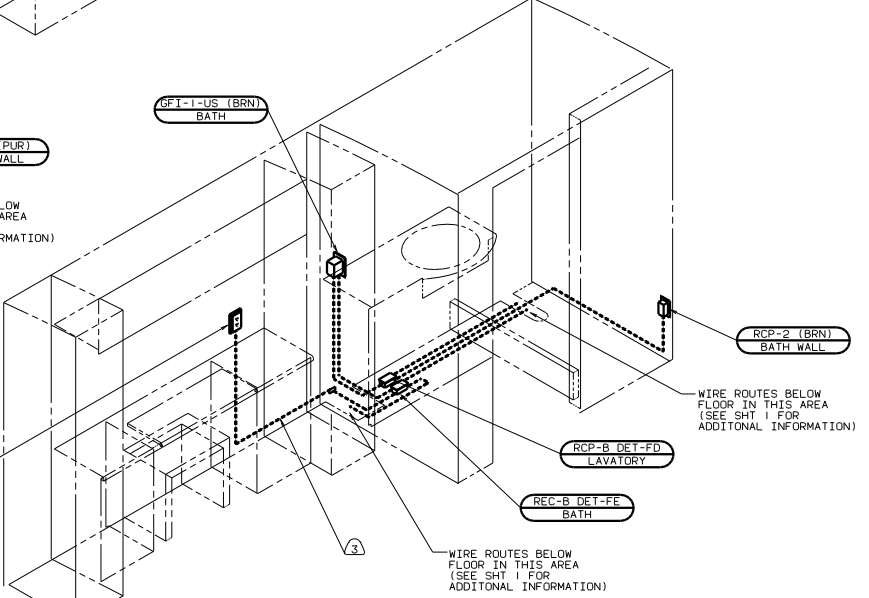
133882



3

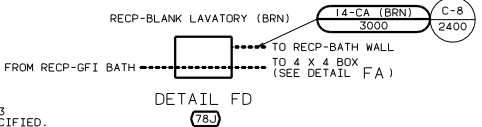
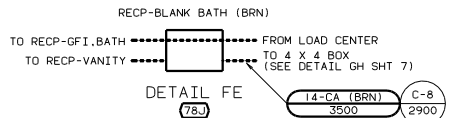


3



44X 09L 12D

44X 09L 78J

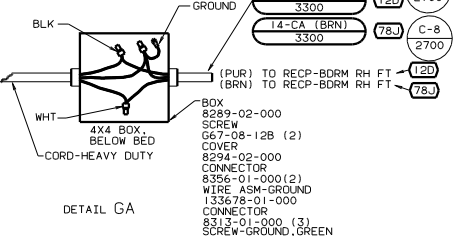
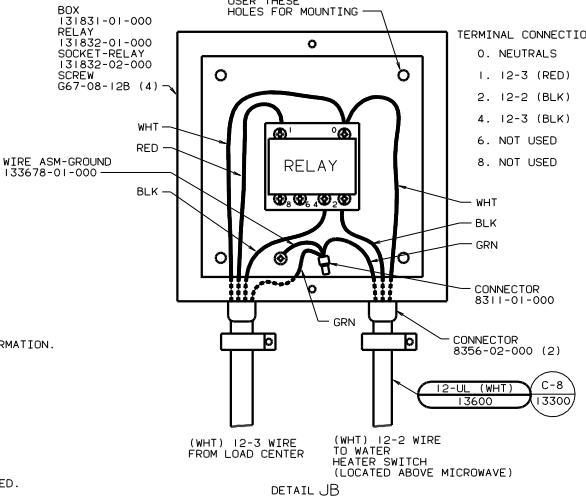
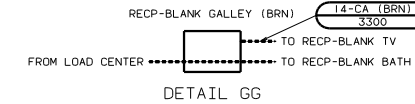
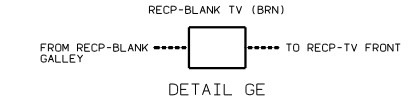
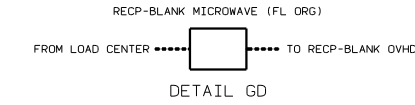
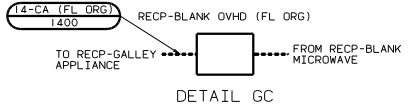
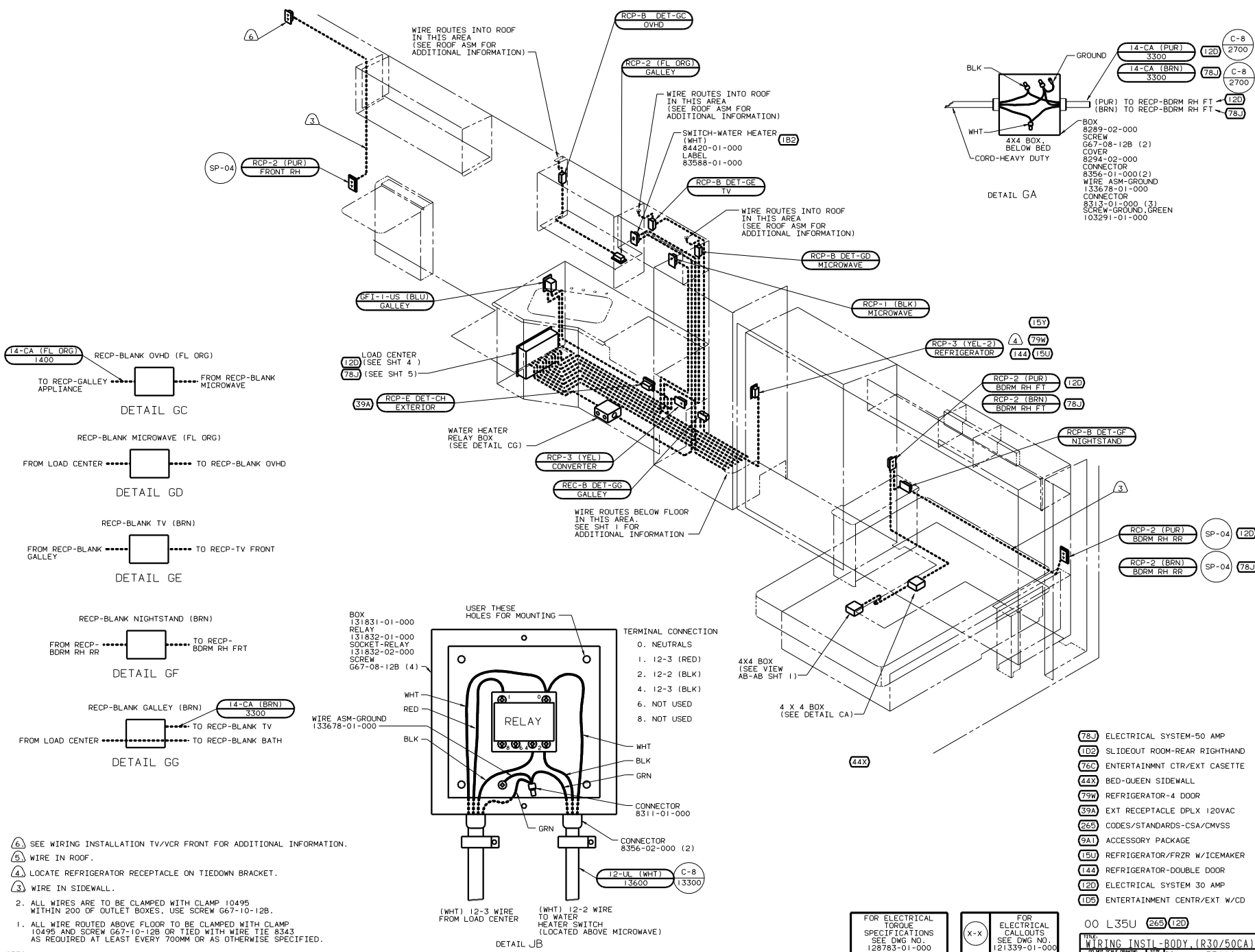


- (78J) ELECTRICAL SYSTEM-50 AMP
- (44X) BED-QUEEN SIDEWALL
- (12D) ELECTRICAL SYSTEM 30 AMP
- (IE3) ENERGY MANAGEMENT SYSTEM
- (265) CODES/STANDARDS-CSA/CMVSS
- (09L) SLIDEOUT ROOM FRONT LEFT
- 00 L35U (265)

- 3 WIRE IN SIDEWALL.
- 2. ALL WIRES ARE TO BE CLAMPED WITH CLAMP 10495 WITHIN 200 OF OUTLET BOXES, USE SCREW 667-10-12B.
- 1. ALL WIRE ROUTED ABOVE FLOOR TO BE CLAMPED WITH CLAMP 10495 AND SCREW 667-10-12B OR TIED WITH WIRE TIE 8343 AS REQUIRED AT LEAST EVERY 700MM OR AS OTHERWISE SPECIFIED.

FOR ELECTRICAL TORQUE SPECIFICATIONS SEE DWG NO. 128783-01-000

FOR ELECTRICAL CALLOUTS SEE DWG NO. 121339-01-000



- NOTES:
- ① SEE WIRING INSTALLATION TV/VCR FRONT FOR ADDITIONAL INFORMATION.
 - ② WIRE IN ROOF.
 - ③ LOCATE REFRIGERATOR RECEPTACLE ON TIEDOWN BRACKET.
 - ④ WIRE IN SIDEWALL.
 - 2. ALL WIRES ARE TO BE CLAMPED WITH CLAMP 10495 WITHIN 200 OF OUTLET BOXES. USE SCREW G67-10-12B.
 - 1. ALL WIRE ROUTED ABOVE FLOOR TO BE CLAMPED WITH CLAMP 10495 AND SCREW G67-10-12B OR TIED WITH WIRE TIE 8343 AS REQUIRED AT LEAST EVERY 700MM OR AS OTHERWISE SPECIFIED.

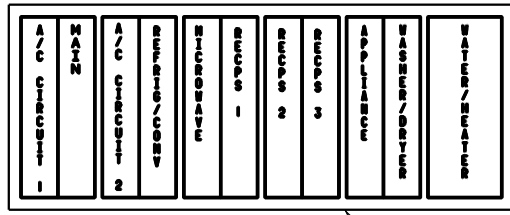
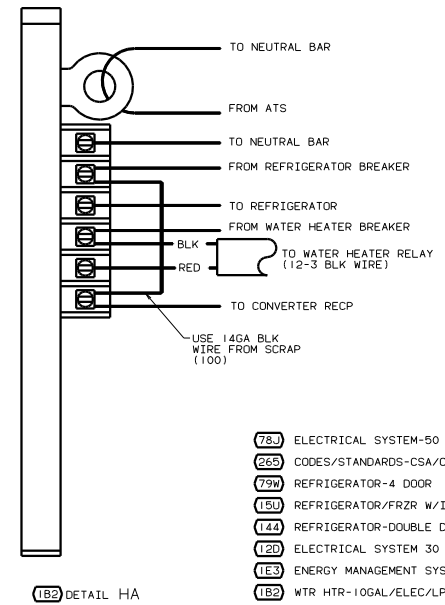
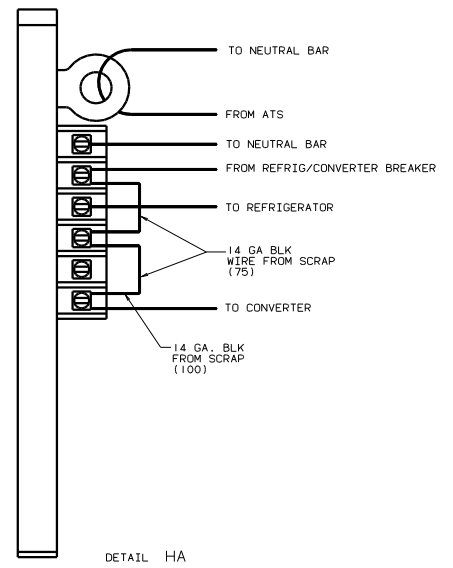
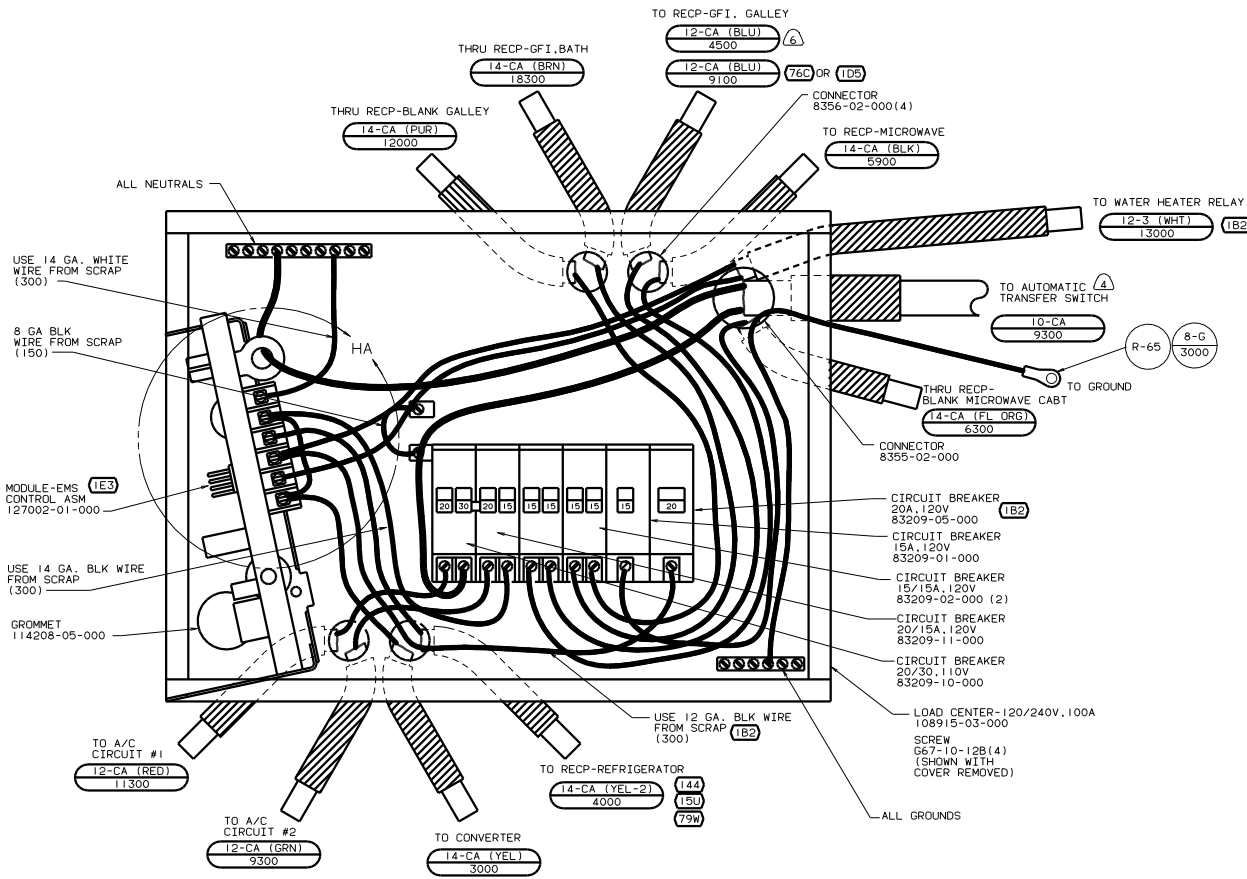
- TERMINAL CONNECTION
- 0. NEUTRALS
 - 1. 12-3 (RED)
 - 2. 12-2 (BLK)
 - 4. 12-3 (BLK)
 - 6. NOT USED
 - 8. NOT USED

- (78J) ELECTRICAL SYSTEM-50 AMP
- (102) SLIDEOUT ROOM-REAR RIGHTHAND
- (76C) ENTERTAINMENT CTR/EXT CASSETTE
- (42X) BED-QUEEN SIDEWALL
- (79W) REFRIGERATOR-4 DOOR
- (39A) EXT RECEPTACLE DPLX 120VAC
- (265) CODES/STANDARDS-CSA/CMVSS
- (9A1) ACCESSORY PACKAGE
- (15U) REFRIGERATOR/FRZR W/ICEMAKER
- (14A) REFRIGERATOR-DOUBLE DOOR
- (12D) ELECTRICAL SYSTEM 30 AMP
- (105) ENTERTAINMENT CENTR/EXT W/CD

FOR ELECTRICAL TORQUE SPECIFICATIONS SEE DWG NO. 128783-01-000

FOR ELECTRICAL CALLOUTS SEE DWG NO. 121339-01-000

00 L35U (265) (12D)
 WIRING INSTL-BODY (R30/50CA)
 133882

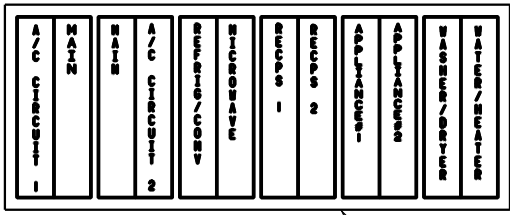
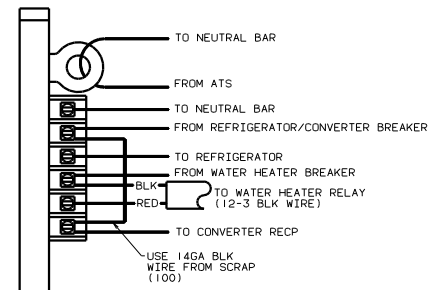
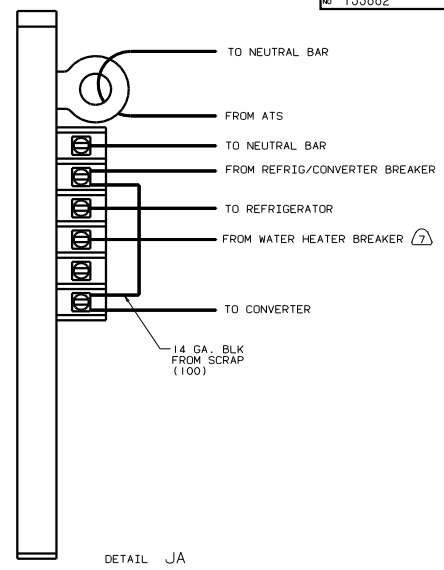
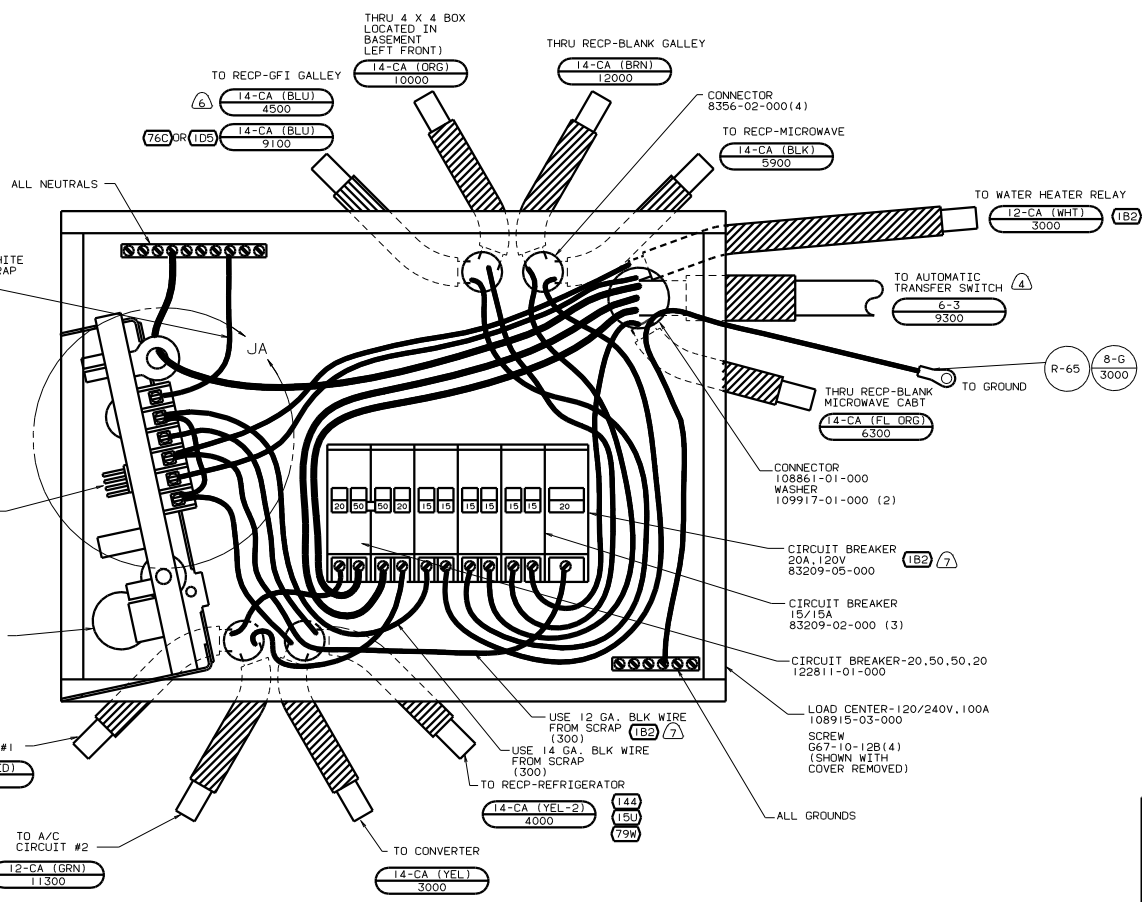


INSTALL LABEL ON FRONT PANEL BELOW BREAKERS BETWEEN MOUNTING HOLES

LABEL 95721-35-000

- 6. WITHOUT 76C OR 1D5
- 5. WIRE TIE THE FOLLOWING WIRES FOR THE FIRST 2000MM; RED, GREEN, PURPLE, BROWN, 10/2; BLACK, YELLOW, YELLOW-2, WHITE, BLUE. (LEAVE A 1700 LOOP IN BLUE WIRE BEHIND LOAD CENTER.)
- 4. WIRE MUST BE 600 LONG INSIDE BOX, ALL OTHERS TO BE 300.
- 3. ALL CABLES SHALL BE COVERED WITH CONDUIT-CONVOLUTE, SLIT 41953-01-000 UNLESS OTHERWISE SPECIFIED. 600 LESS THAN CABLE LENGTH.
- 2. ATTACH WIRES TO BACKSIDE OF LOAD CENTER. USE EXISTING HOLES AND TIE-WIRE 116673-01-000.
- 1. ALL GROUND WIRES TO BE COVERED WITH TUBING 8041-02-000.

- (78U) ELECTRICAL SYSTEM-50 AMP
- (265) CODES/STANDARDS-CSA/CMVSS
- (79W) REFRIGERATOR-4 DOOR
- (15U) REFRIGERATOR/FRZR W/ICEMAKER
- (144) REFRIGERATOR-DOUBLE DOOR
- (12D) ELECTRICAL SYSTEM 30 AMP
- (1E3) ENERGY MANAGEMENT SYSTEM
- (1B2) WTR HTR-10GAL/ELEC/LP/MTR/AID



- 7. THIS BREAKER MUST BE INSTALLED AND WIRED TO EMS EVEN WITHOUT 1B2.
- 6. WITHOUT 76C OR 1D5
- 5. WIRE TIE THE FOLLOWING WIRES FOR THE FIRST 2000MM; RED, GREEN, PURPLE, BROWN, 10/2; BLACK, YELLOW, YELLOW-2, WHITE, BLUE. (LEAVE A 1700 LOOP IN BLUE WIRE BEHIND LOAD CENTER.)
- 4. WIRE MUST BE 600 LONG INSIDE BOX, ALL OTHERS TO BE 300.
- 3. ALL CABLES SHALL BE COVERED WITH CONDUIT-CONVOLUTE, SLIT 41953-01-000 UNLESS OTHERWISE SPECIFIED. 600 LESS THAN CABLE LENGTH.
- 2. ATTACH WIRES TO BACKSIDE OF LOAD CENTER. USE EXISTING HOLES AND TIE-WIRE 116673-01-000.
- 1. ALL GROUND WIRES TO BE COVERED WITH TUBING 8041-02-000.

INSTALL LABEL ON FRONT PANEL BELOW BREAKERS BETWEEN MOUNTING HOLES
 LABEL 95721-36-000

- 1E3 ENERGY MANAGEMENT SYSTEM
- 76C ENTERTAINMENT CTR/EXT CASSETTE
- 1D5 ENTERTAINMENT CTR/EXT W/CD
- 78J ELECTRICAL SYSTEM-50 AMP
- 265 CODES/STANDARDS-CSA/CMVSS
- 22R VACUUM CLEANER-PORTABLE
- 79W REFRIGERATOR-4 DOOR
- 15U REFRIGERATOR/FRZR W/ICE MAKER
- 14A REFRIGERATOR-DOUBLE DOOR
- 1B2 WTR HTR-10GAL/ELEC/LP/MTR AID

FOR ELECTRICAL TORQUE SPECIFICATIONS SEE DWG NO. 128783-01-000

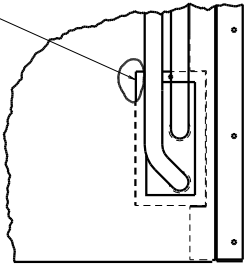
X-X FOR ELECTRICAL CALLOUTS SEE DWG NO. 121339-01-000

00 L35U (265) (78J)

WTR HTR INSTL-BODY, 110V (LC50CA)

133882

PLATE-MOUNTING CONDUIT
106597-01-000
SCREW
G11-08-128(4)

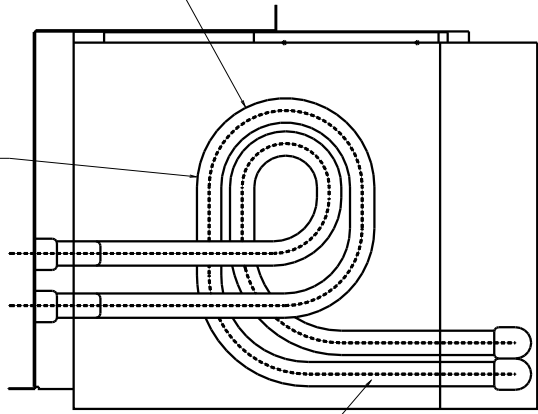


ROUTE-EXTRA CONDUIT
AS SHOWN AND
SECURE TOGETHER
WITH EXTRA 12V
CONTROL WIRING WITH
TIE-WIRE
8343-02-000

FROM ATS

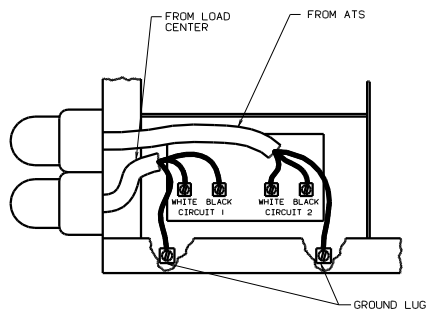
FROM LOAD
CENTER

CONDUIT
91234-01-000
(1500)
CONNECTOR
91235-01-000(2)



CONDUIT
91234-01-000
(1500)
CONNECTOR
91235-01-000(2)

VIEW KA-KA



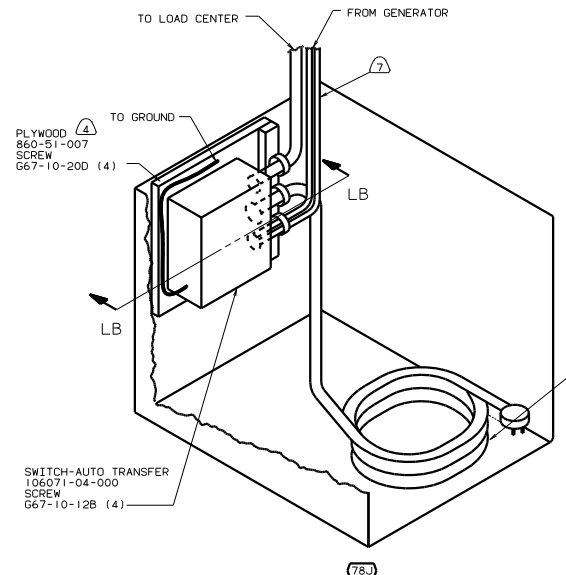
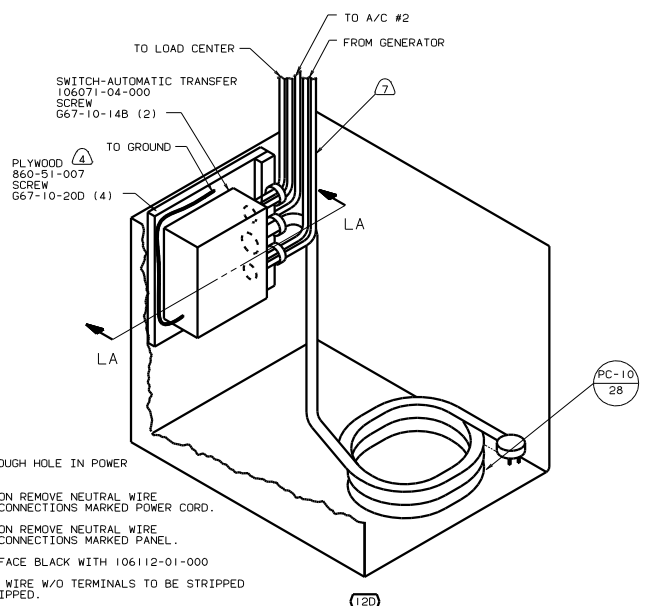
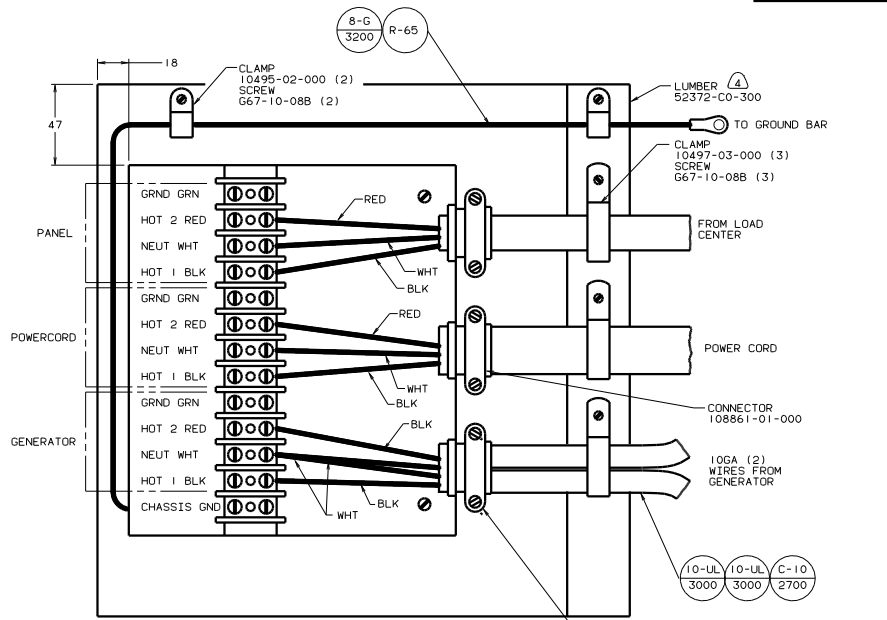
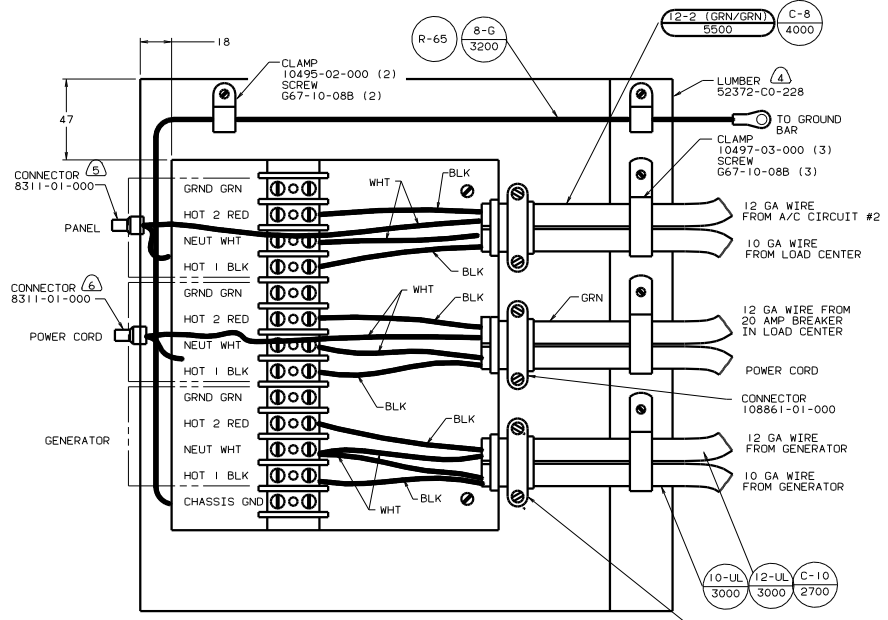
SEAL EDGES.

NOTES:

- (78U) ELECTRICAL SYSTEM-50 AMP
- (12D) ELECTRICAL SYSTEM 30 AMP
- (265) CODES/STANDARDS-CSA/CMVSS
- (1B1) CODES/STANDARDS USA

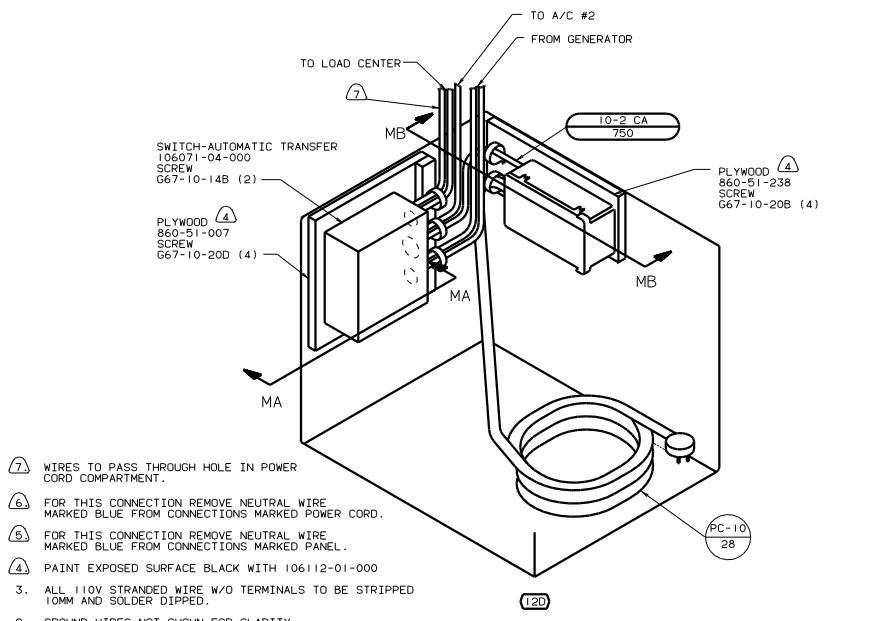
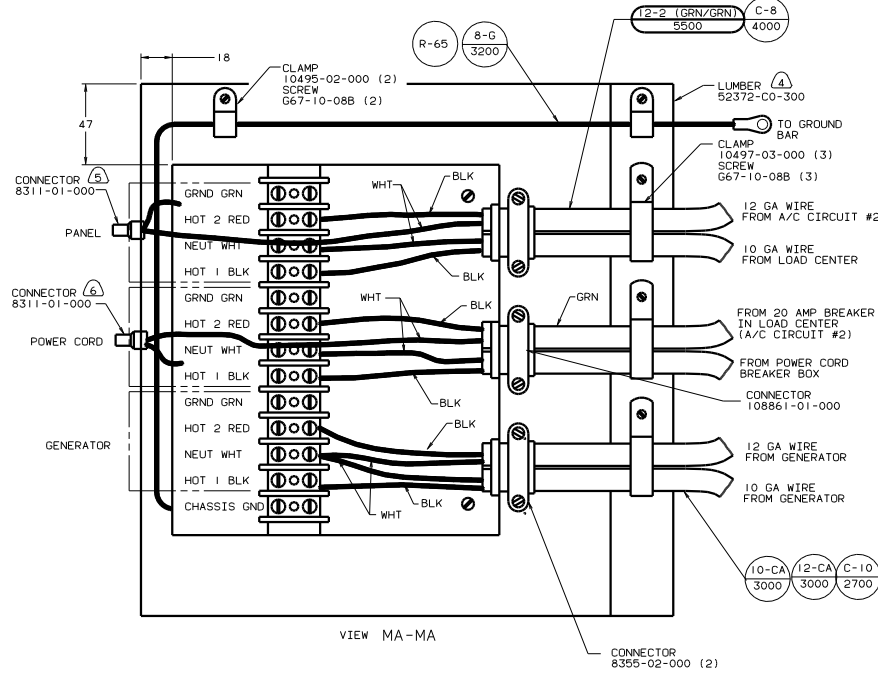
00 L35U (1B1) (12D) (78U) (265)

WIRING INSTL-BODY, 110V(C-A/C)	
DATE SCALE DRAWING	FIG. NO.
SHEET 10 OF 13	133882



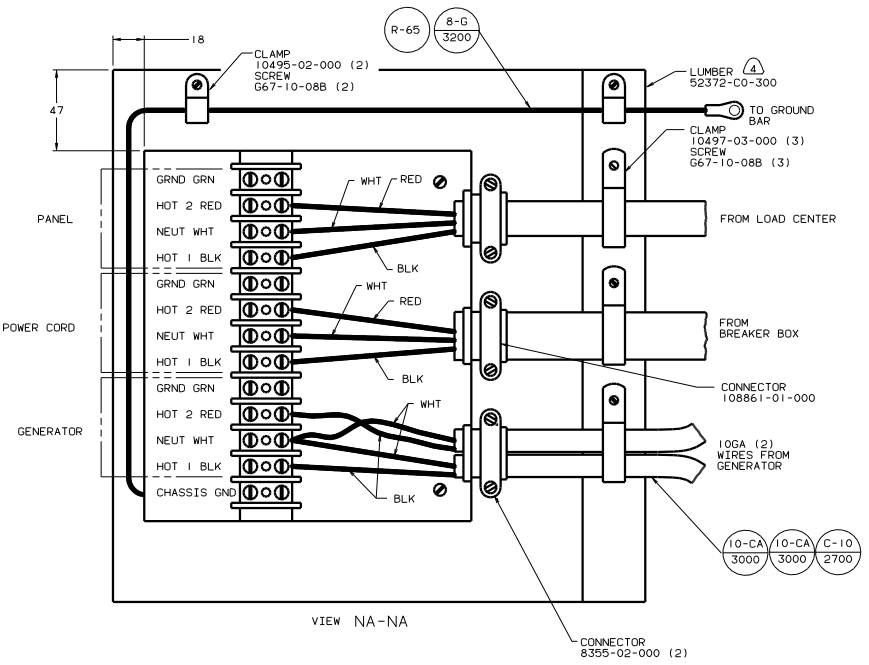
- NOTES:
1. ALL WIRES TO BE CLAMPED WITH IN 200 OF BOX.
 2. GROUND WIRES NOT SHOWN FOR CLARITY.
 3. ALL 110V STRANDED WIRE W/O TERMINALS TO BE STRIPPED 10MM AND SOLDER DIPPED.
 4. PAINT EXPOSED SURFACE BLACK WITH 106112-01-000
 5. FOR THIS CONNECTION REMOVE NEUTRAL WIRE MARKED BLUE FROM CONNECTIONS MARKED PANEL.
 6. FOR THIS CONNECTION REMOVE NEUTRAL WIRE MARKED BLUE FROM CONNECTIONS MARKED POWER CORD.
 7. WIRES TO PASS THROUGH HOLE IN POWER CORD COMPARTMENT.

(78J) ELECTRICAL SYSTEM-50 AMP
 (265) CODES/STANDARDS-CSA/CMVSS
 (12D) ELECTRICAL SYSTEM 30 AMP
 (1B1) CODES/STANDARDS USA
 00 L35U (1B1) (12D) (78J)
 FILE: WIRING INSTL-BODY (30AITSUS)
 30 265 265 265
 SHEET 11 OF 13 11 16 133882



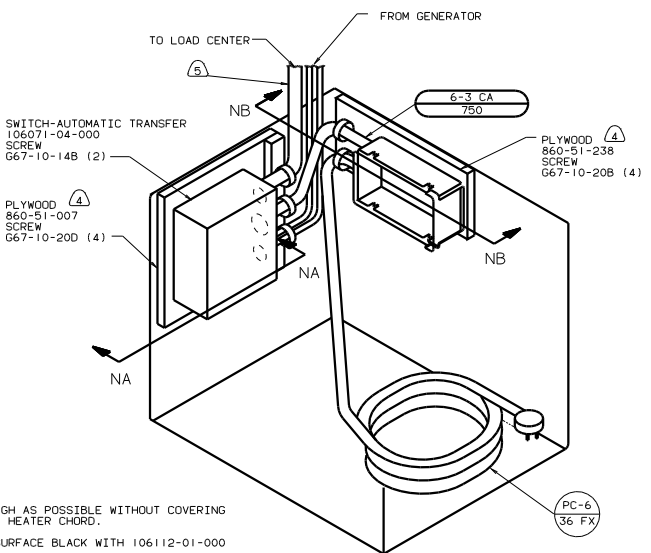
- NOTES:
- 7) WIRES TO PASS THROUGH HOLE IN POWER CORD COMPARTMENT.
 - 6) FOR THIS CONNECTION REMOVE NEUTRAL WIRE MARKED BLUE FROM CONNECTIONS MARKED POWER CORD.
 - 5) FOR THIS CONNECTION REMOVE NEUTRAL WIRE MARKED BLUE FROM CONNECTIONS MARKED PANEL.
 - 4) PAINT EXPOSED SURFACE BLACK WITH 106112-01-000
 - ALL 110V STRANDED WIRE W/O TERMINALS TO BE STRIPPED 10MM AND SOLDER DIPPED.
 - GROUND WIRES NOT SHOWN FOR CLARITY.
 - ALL WIRES TO BE CLAMPED WITH IN 200 OF BOX.

8A1	ACCESSORY PACKAGE
265	CODES/STANDARDS-CSA/CMVSS
120	ELECTRICAL SYSTEM 30 AMP
00 L35U 120 265	
TITLE: WIRING INSTL-BODY (30A1SCA)	
DRAWING NO. 133882	
SHEET 12 OF 13	

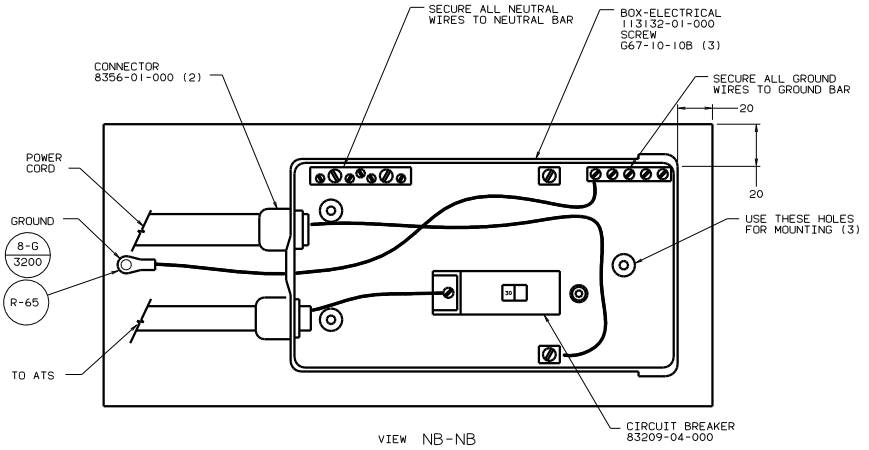


VIEW NA-NA

CONNECTOR 8355-02-000 (2)



VIEW NB-NB (WITH COVER REMOVED)



- (5) MOUNT ATS AS HIGH AS POSSIBLE WITHOUT COVERING HOLE FOR ENGINE HEATER CHORD.
- (4) PAINT EXPOSED SURFACE BLACK WITH 106112-01-000
- 3. ALL 110V STRANDED WIRE W/O TERMINALS TO BE STRIPPED 10MM AND SOLDER DIPPED.
- 2. GROUND WIRES NOT SHOWN FOR CLARITY.
- 1. ALL WIRES TO BE CLAMPED WITH IN 200 OF BOX.

(78J) ELECTRICAL SYSTEM-50 AMP
 (265) CODES/STANDARDS-CSA/CMVSS
 00 L35U (265) (78J)

TITLE		WIRING INSTL-BODY (50A/ISCA)	
NO	REV	DATE	BY
1	1		
SHEET 13 OF 13		133882	