



DANGER

Danger of electrical shock, burns or death. Always remove all power sources before attempting any repair, service or diagnostic work. Power can be present from shore power, generator, inverter or battery. All power sources must be disabled and secured before performing any service.



CAUTION

If you lack the skills, tools or equipment to perform diagnostic or repair work leave such work to an authorized Winnebago Industries dealer or other qualified shop.

DWG NO
133881-01
133881-02

WIN
ETA

RELEASE DATE 133881
REVISION RECORD DATE 133881

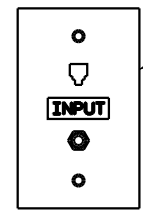
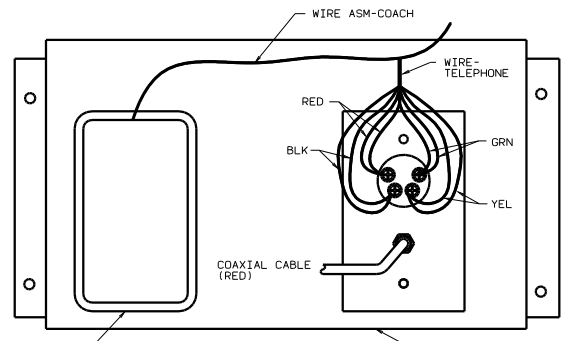
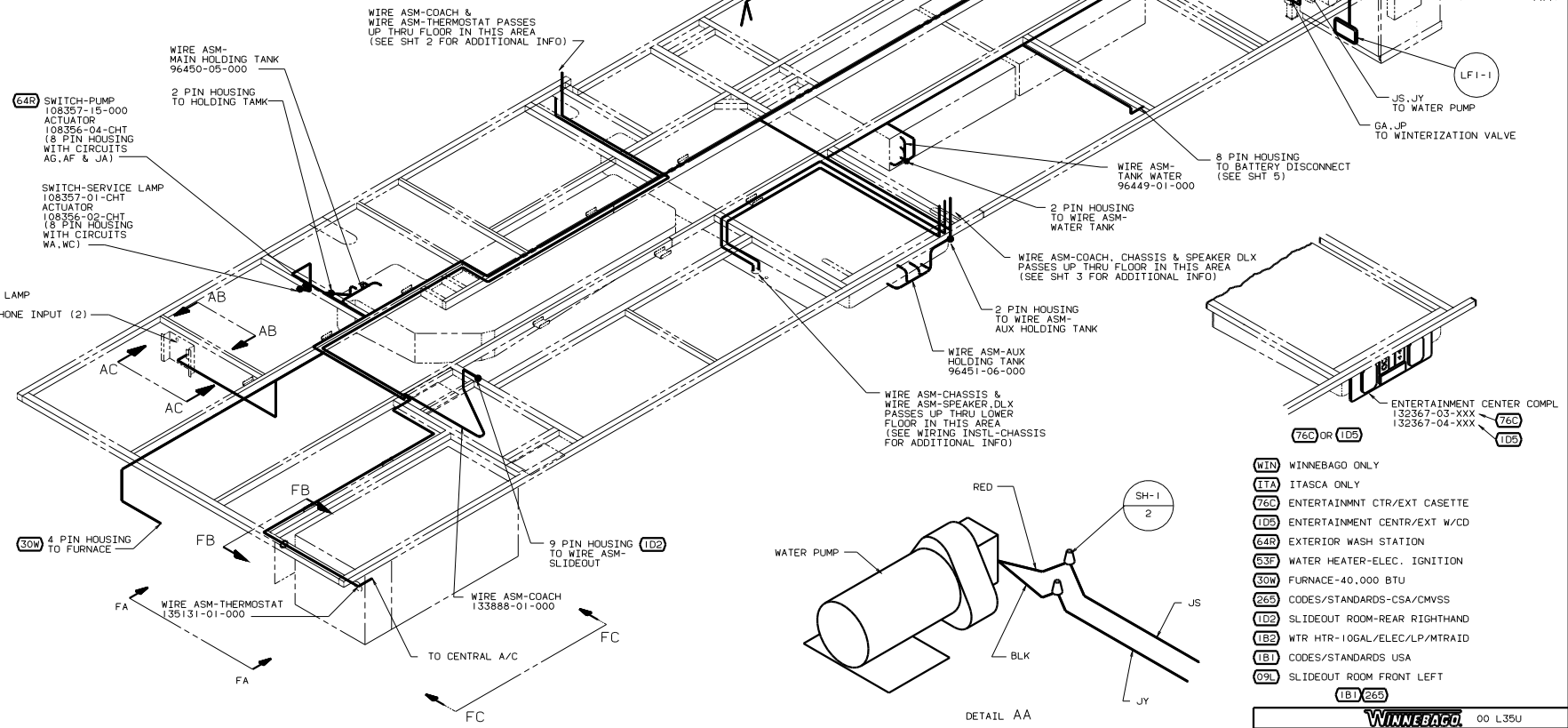


PLATE-WALL, TELEPHONE/COAX
130686-01-CHT
LABEL
87236-01-000
SCREW
G39-08-08U (2)

DETAIL AB-AB

DETAIL AC-AC
PANEL-SERVICE
132862-01-CHT
SCREW
G67-08-10U (4)



64R SWITCH-PUMP
108357-15-000
ACTUATOR
108356-04-CHT
(8 PIN HOUSING
WITH CIRCUITS
AG, AF & JA)

SWITCH-SERVICE LAMP
108357-01-CHT
ACTUATOR
108356-02-CHT
(8 PIN HOUSING
WITH CIRCUITS
WA, WC)

COMPT LAMP
WA, WE
TELEPHONE INPUT (2)

30W 4 PIN HOUSING
TO FURNACE

FA WIRE ASM-THERMOSTAT
135131-01-000

FB WIRE ASM-COACH
133888-01-000

FC 9 PIN HOUSING
TO WIRE ASM-SLIDEOUT
1D2

WIRE ASM-MAIN HOLDING TANK
96450-05-000

2 PIN HOUSING
TO HOLDING TANK

WIRE ASM-COACH &
WIRE ASM-THERMOSTAT PASSES
UP THRU FLOOR IN THIS AREA
(SEE SHT 2 FOR ADDITIONAL INFO)

09L WIRE ASM-COMPARTMENT
129295-01-000

2 PIN HOUSING
TO WIRE ASM-
SIDEWALL LEFT

3 & 6 PIN HOUSING
TO WIRE ASM-
SLIDEOUT
EXTENSION

3 & 6 PIN HOUSING
TO WIRE ASM-SLIDEOUT

WIRE ASM-EXTENSIOR SLIDEOUT
132887-01-000
09L

GB, JP
TO WTR HTR
BYPASS VALVE

3 PIN HOUSING
TO WATER HEATER
1B2 63F

WATER PUMP
(SEE DETAIL AA)

JS, JY
TO WATER PUMP

GA, JP
TO WINTERIZATION VALVE

8 PIN HOUSING
TO BATTERY DISCONNECT
(SEE SHT 5)

WIRE ASM-TANK WATER
96449-01-000

2 PIN HOUSING
TO WIRE ASM-
WATER TANK

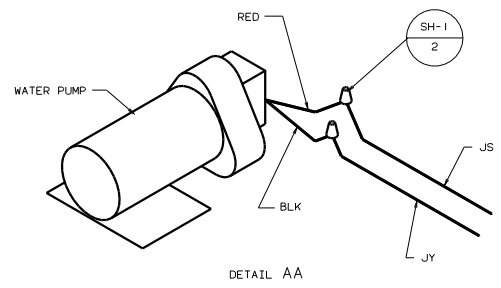
WIRE ASM-COACH, CHASSIS & SPEAKER DLX
PASSES UP THRU FLOOR IN THIS AREA
(SEE SHT 3 FOR ADDITIONAL INFO)

2 PIN HOUSING
TO WIRE ASM-
AUX HOLDING TANK

WIRE ASM-AUX
HOLDING TANK
96451-06-000

WIRE ASM-CHASSIS &
WIRE ASM-SPEAKER, DLX
PASSES UP THRU LOWER
FLOOR IN THIS AREA
(SEE WIRING INSTL-CHASSIS
FOR ADDITIONAL INFO)

ENTERTAINMENT CENTER COMPL
132367-03-XXX
132367-04-XXX
76C OR 1D5



DETAIL AA

- (WIN) WINNEBAGO ONLY
- (ETA) ITASCA ONLY
- (76C) ENTERTAINMENT CTR/EXT CASSETTE
- (1D5) ENTERTAINMENT CTR/EXT W/CD
- (64R) EXTERIOR WASH STATION
- (63F) WATER HEATER-ELEC. IGNITION
- (30W) FURNACE-40,000 BTU
- (265) CODES/STANDARDS-CSA/CMVSS
- (1D2) SLIDEOUT ROOM-REAR RIGHTHAND
- (1B2) WTR HTR-10GAL/ELEC/LP/MTRAITD
- (1B1) CODES/STANDARDS USA
- (09L) SLIDEOUT ROOM FRONT LEFT
- (1B1) 265

2. SEE WIRING DIAGRAM-BODY FOR ADDITIONAL INFORMATION.

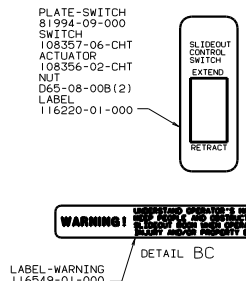
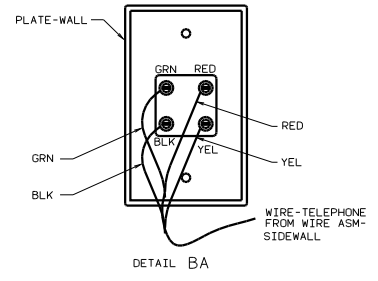
1. ALL WIRE TO BE CLAMPED WITH CLAMP 10495-01-000
OR WIRE TIE 8343-02-000 EVERY 600
UNLESS OTHERWISE SPECIFIED.

NOTES:

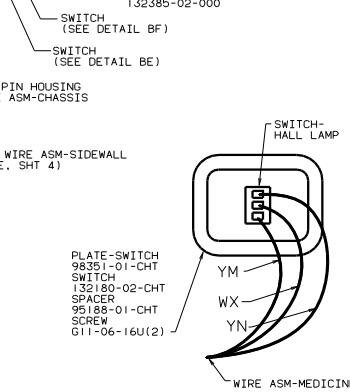
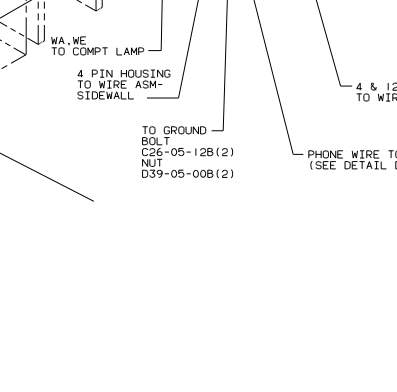
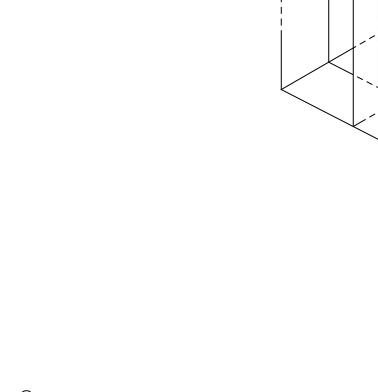
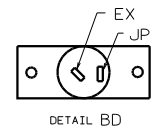
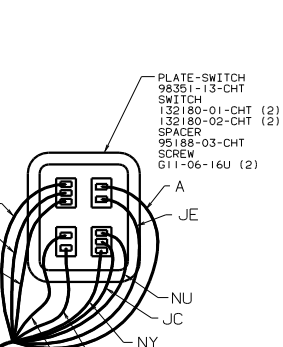
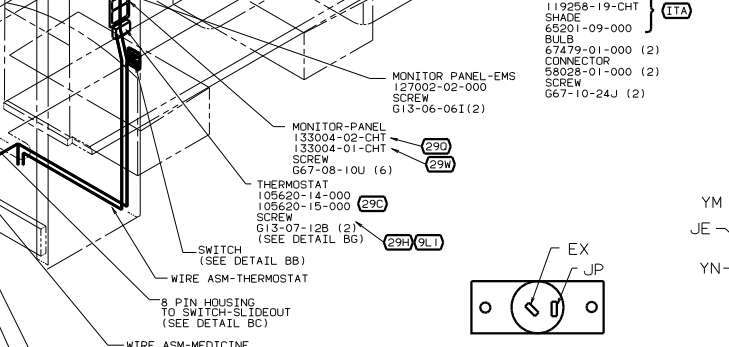
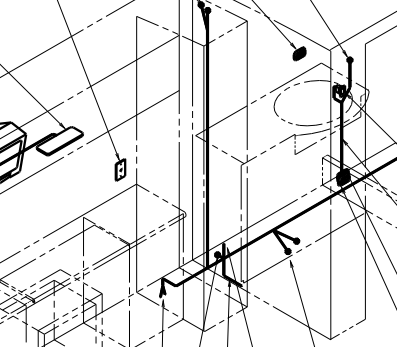
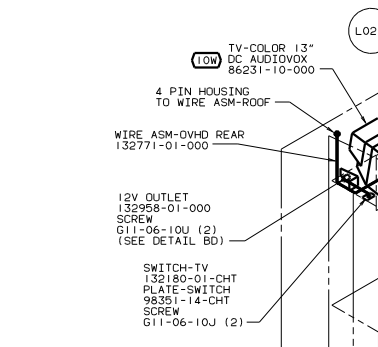
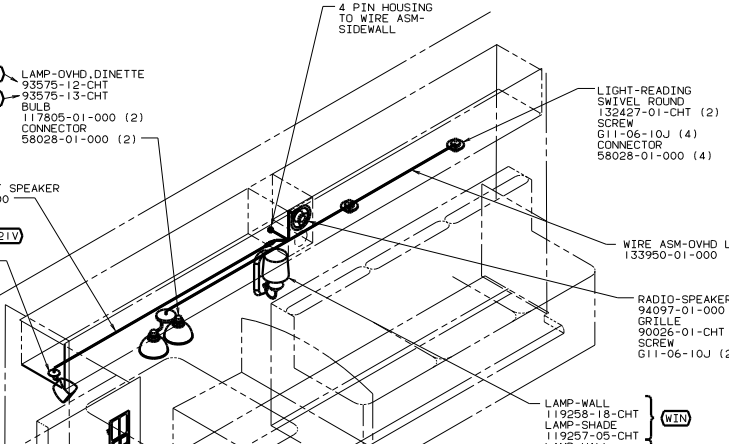
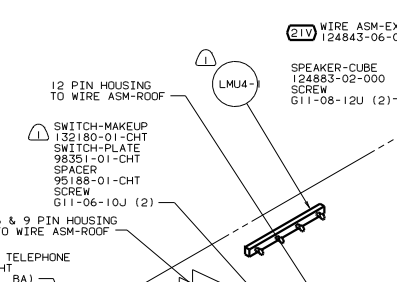
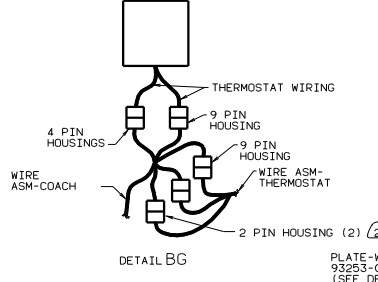
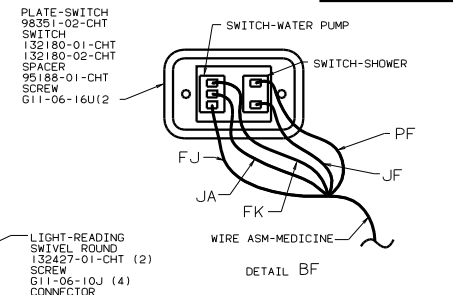
FOR ELECTRICAL
TORQUE
SPECIFICATIONS
SEE DWG NO.
128783-01-000

FOR
ELECTRICAL
CALLOUTS
SEE DWG NO.
121339-01-000

		00 L35U
QTY	DATE	UNSPECIFIED TOLERANCES ARE:
CHP	DATE	WHOLE DIM (X)
FR	DATE	ONE-PLACE (X.X1)
DR	DATE	TWO-PLACE (X.XX)
DATE	DATE	THREE-PLACE (X.XXX)
DATE	DATE	ANGLES
DATE	DATE	INDUS. WAGLE
DATE	DATE	PRODUCTION
<p>WIRING INSTL-BODY, 12V (BF)</p>		<p>133881</p>
<p>REF: 130513</p>		<p>1</p>



WARNING! *Do not connect any electrical wires to the slideout control switch unless you are qualified to do so. Improper wiring could result in fire or electric shock.*



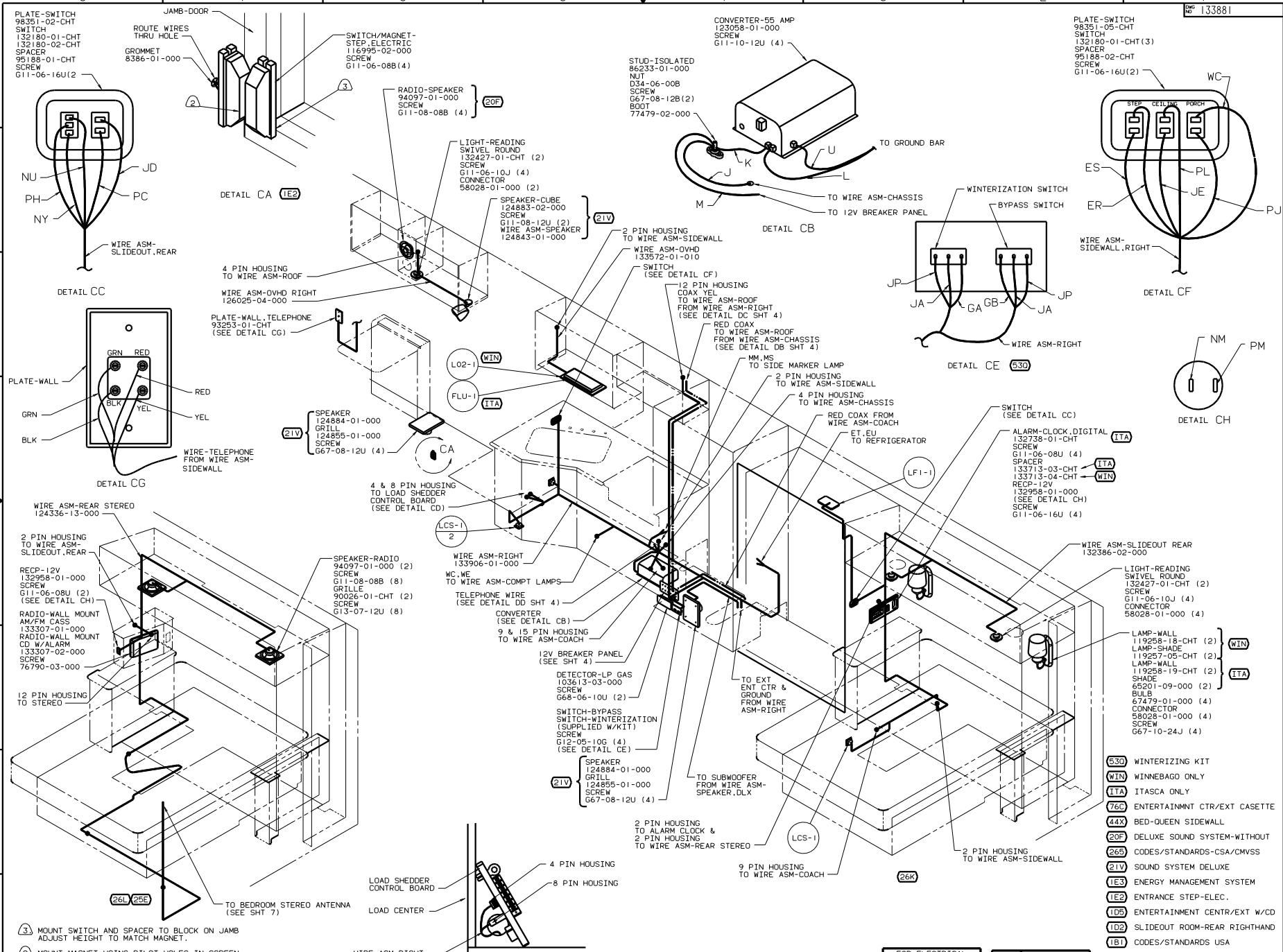
NOTES:
 (2) WITHOUT (29H) PLUG THE TWO, TWO PIN HOUSINGS TOGETHER ON WIRE ASM-COACH.
 (1) WIRE IN SIDEWALL.

PLATE-SWITCH
 98351-01-CHT SWITCH
 132180-02-CHT SWITCH
 95188-01-CHT SPACER
 G11-06-16U(2) SCREW

- (9L1) HOME COMFORT PLUS PACKAGE
- (29H) HEAT PUMP-A/C CENTRAL
- (29D) SOLAR PANEL-10 WATT
- (29S) A/C CENTRAL
- (29W) SOLAR PANEL/BATTERY CHRG W/O
- (WIN) WINNEBAGO ONLY
- (ITA) ITASCA ONLY
- (20F) DELUXE SOUND SYSTEM-WITHOUT
- (44X) BED-DUJEN SIDEWALL
- (29D) SOLAR PANEL-10 WATT
- (26S) CODES/STANDARDS-CSA/CMVSS
- (21V) SOUND SYSTEM DELUXE
- (10W) TV-REAR
- (1E3) ENERGY MANAGEMENT SYSTEM
- (1B1) CODES/STANDARDS USA
- (09L) SLIDEOUT ROOM FRONT LEFT

FOR ELECTRICAL TORQUE SPECIFICATIONS SEE DWG NO. 128783-01-000

FOR ELECTRICAL CALLOUTS SEE DWG NO. 121339-01-000



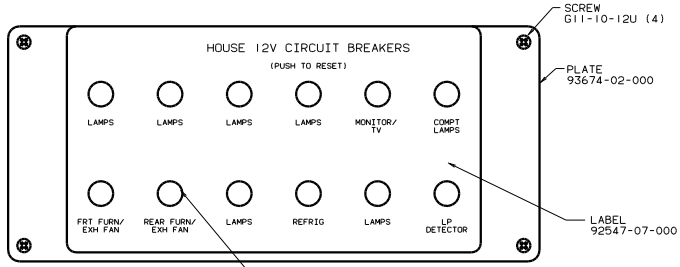
- 3 MOUNT SWITCH AND SPACER TO BLOCK ON JAMB ADJUST HEIGHT TO MATCH MAGNET.
- 2 MOUNT MAGNET USING PILOT HOLES IN SCREEN DOOR FRAME. MOUNT WITH MAGNET TOWARD SWITCH.
- 1 WIRE ROUTED IN SIDEWALL.

NOTES:

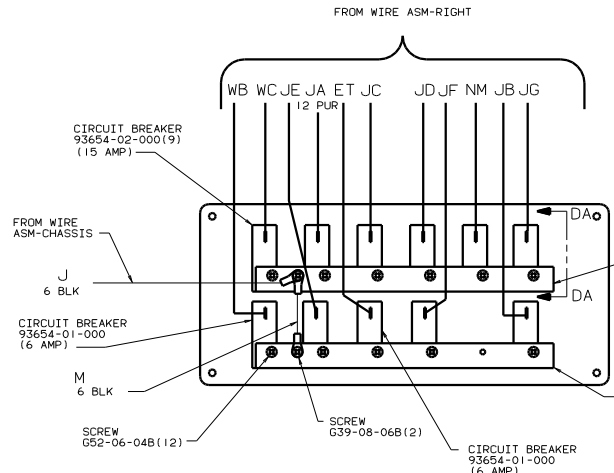
FOR ELECTRICAL TORQUE SPECIFICATIONS SEE DWG NO. 128783-01-000

FOR ELECTRICAL CALLOUTS SEE DWG NO. 121339-01-000

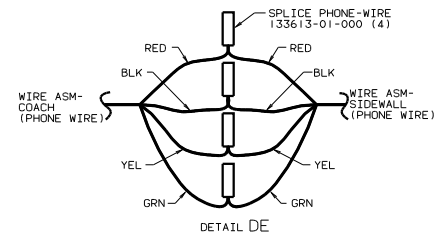
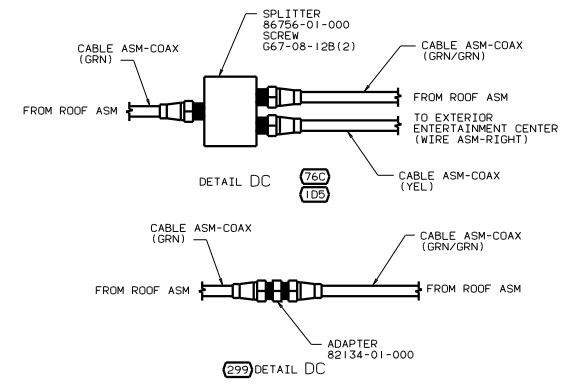
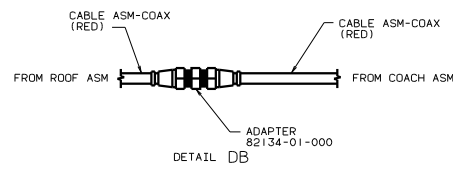
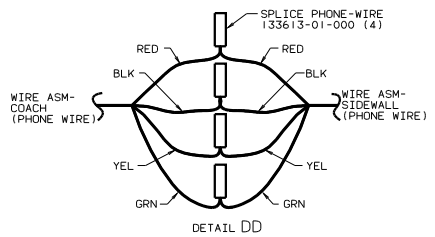
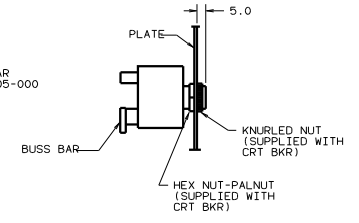
00 L35U 1B1 26S 1D2
 WIRING INSTL-RDY 12V (RIGHT)
 SHEET 3 OF 9
 133881



CIRCUIT BREAKER (FRONT VIEW)



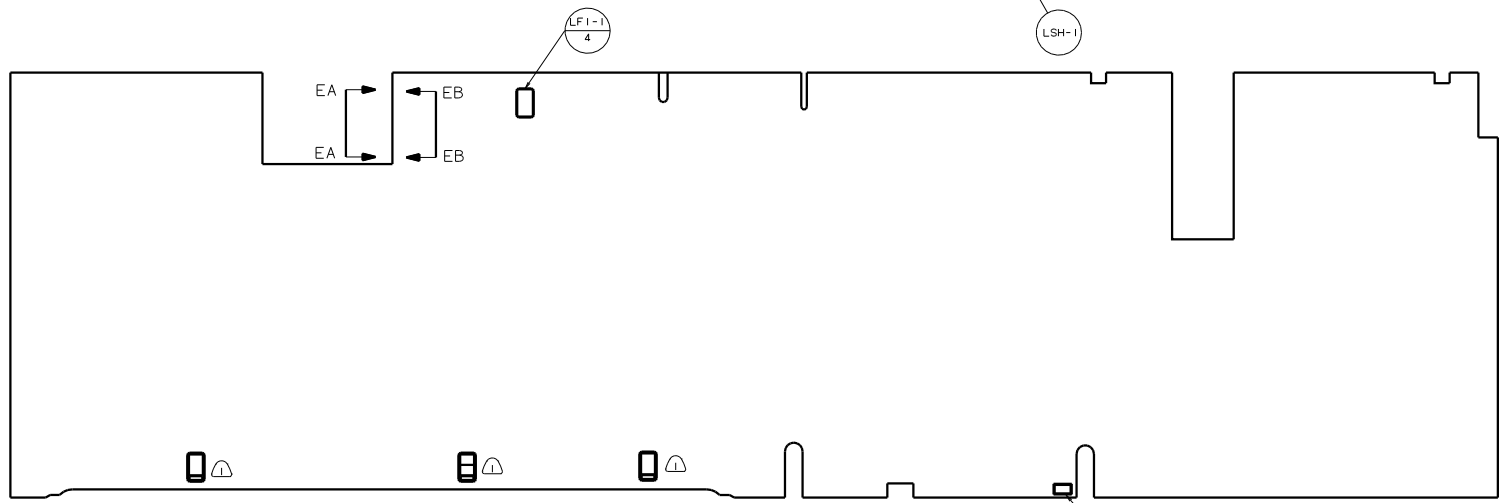
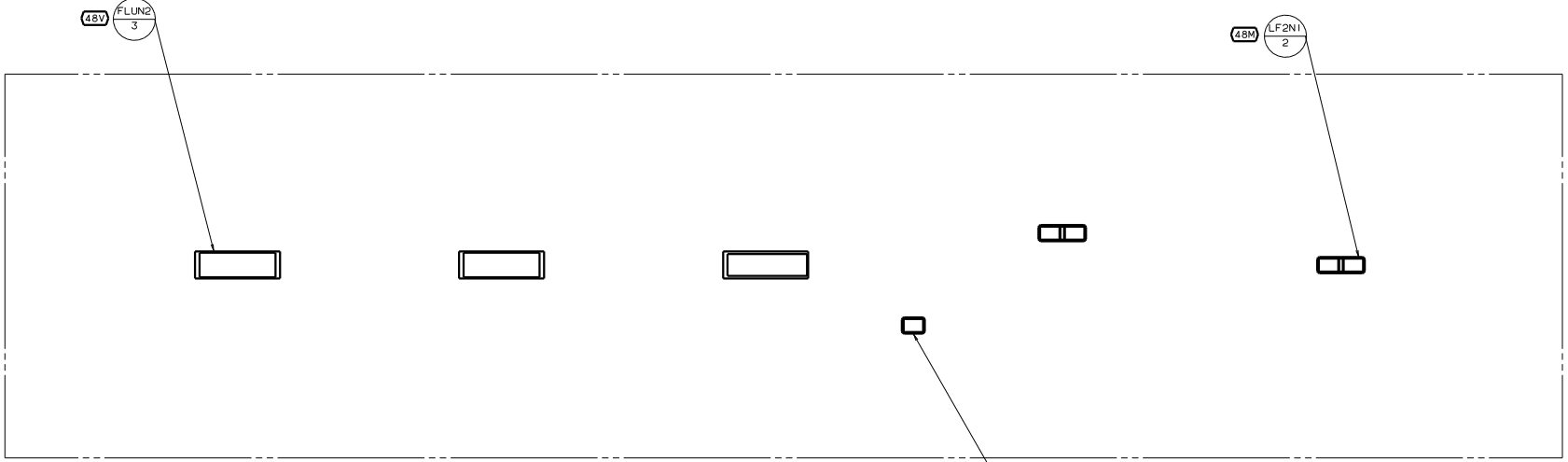
CIRCUIT BREAKER (BACK VIEW)



- 76C ENTERTAINMENT CTR/EXT CASSETTE
- 299 ENTERTAINMENT CENTER EXT. W/O
- 105 ENTERTAINMENT CENTER/EXT W/CD
- 265 CODES/STANDARDS-CSA/CMVSS
- 181 CODES/STANDARDS USA

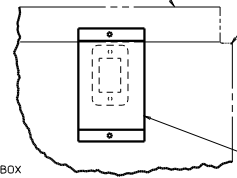
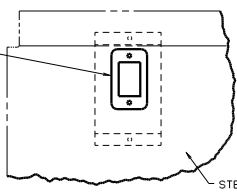
FOR ELECTRICAL TORQUE SPECIFICATIONS SEE DWG NO. 128783-01-000

TITLE		WIRING INSTL-BODY(12 BP)	
NO. OF SHEETS	TOTAL SHEETS	REV	DATE
1	1	1	1
DRAWN		133881	



SWITCH-BATTERY.DISC
108357-06-000
ACTUATOR-SWITCH
108356-11-CHT
PLATE-SWITCH
98351-07-CHT
SCREW
G11-06-16U (2)

UPPER FLOOR
SUPPORT FRAME



CHANNEL-HAT
135167-01-CHT
SCREW
G39-10-08U (2)

LAMP
86280-01-000
SCREW
G67-10-12U (4)
CONNECTOR
58028-01-000 (2)

NOTES:
1) LAMPS LOCATED IN SLIDEOUT COMPARTMENTS.

FOR ELECTRICAL
TORQUE
SPECIFICATIONS
SEE DWG NO.
128783-01-000

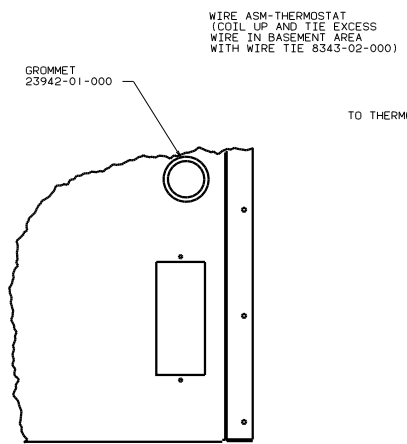


FOR ELECTRICAL
CALLOUTS
SEE DWG NO.
121339-01-000

- (48V) LIGHTS-FLUORESCENT
- (48M) LIGHTS-INCANDESCENT
- (265) CODES/STANDARDS-CSA/CMVSS
- (1B1) CODES/STANDARDS USA

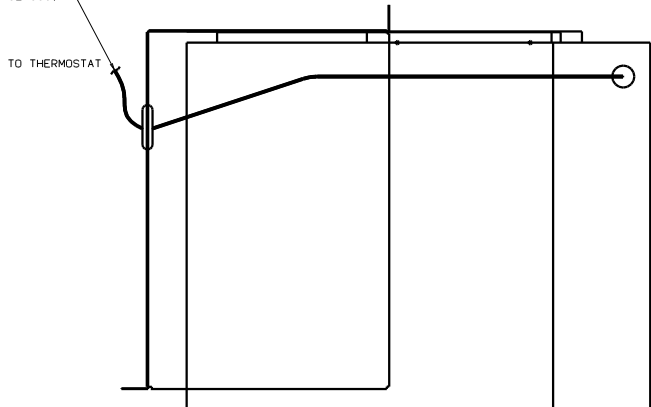
00 L35U (1B1) (265)

TITLE: WIRING INSTL-BODY,12V (CL)
SHEET 5 OF 7
133881

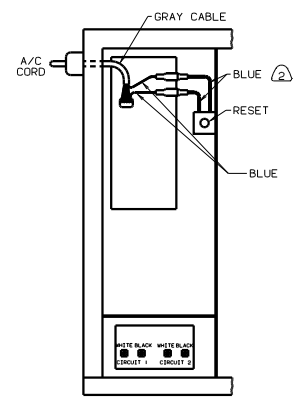


VIEW FB-FB

WIRE ASM-THERMOSTAT
 (COIL UP AND TIE EXCESS
 WIRE IN BASEMENT AREA
 WITH WIRE TIE 8343-02-000)



VIEW FA-FA

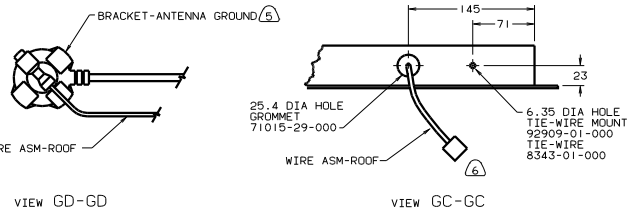
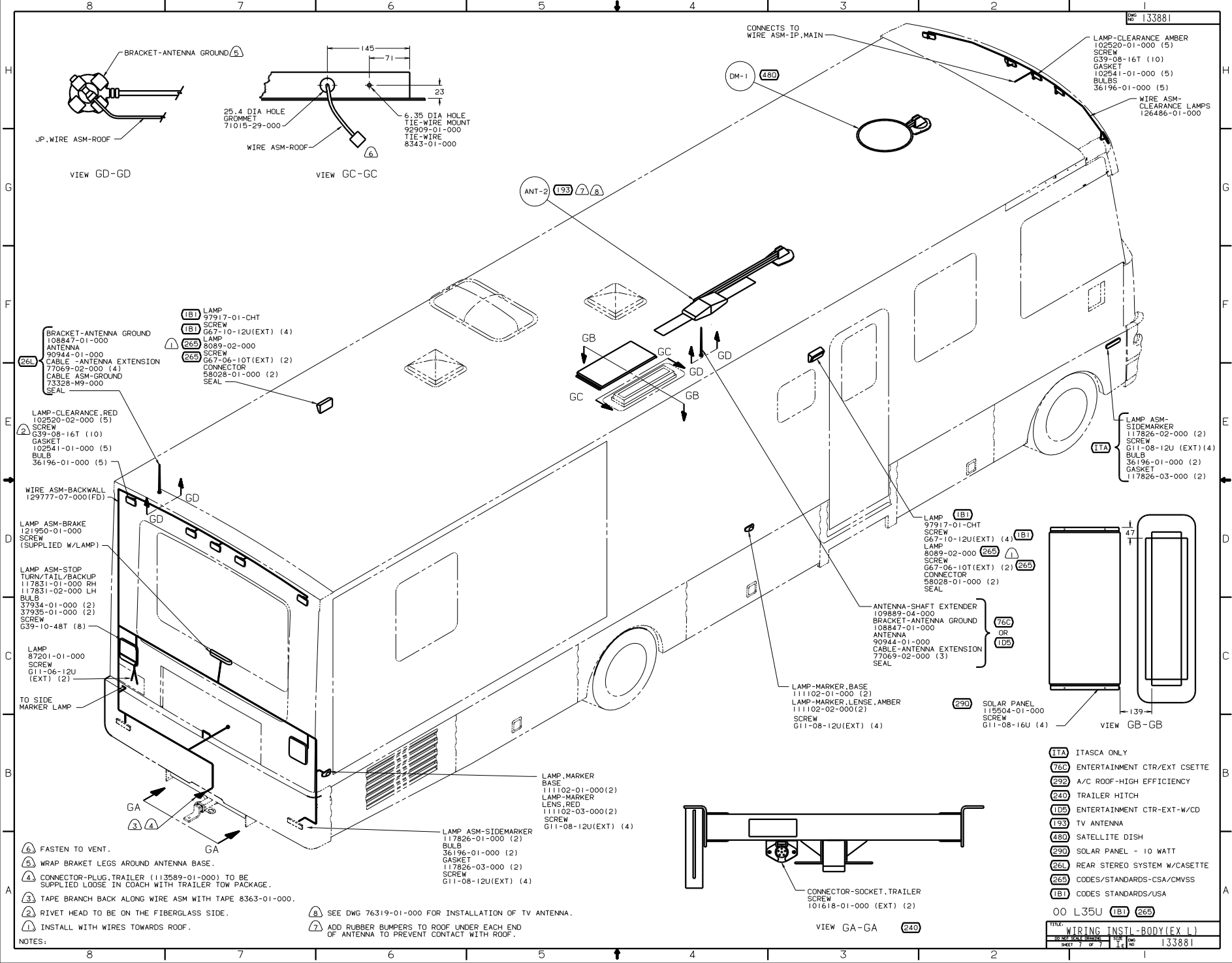


VIEW FC-FC

2. CONNECT BLUE WIRES FROM RESET TO THE BLUE WIRES WITH SPADE TERMINALS ON A/C CORD WITH (29H) & (9L1) FEATURE.
1. SEE WIRING INSTL-BODY.110V FOR ADDITIONAL INFORMATION.

- (9L1) HOME COMFORT PLUS PACKAGE
- (29H) HEAT PUMP-A/C CENTRAL
- (265) CODES/STANDARDS-CSA/CMVSS
- (1B1) CODES/STANDARDS USA

00 L35U (1B1) (265)



- BRACKET-ANTENNA GROUND 108847-01-000
- ANTENNA 90944-01-000
- CABLE - ANTENNA EXTENSION 77069-02-000 (4)
- CABLE ASM-GROUND 73328-M9-000
- SEAL

- LAMP-CLEARANCE, RED 102520-02-000 (5)
- SCREW G39-08-16T (10)
- GASKET 102541-01-000 (5)
- BULB 36196-01-000 (5)

- WIRE ASM-BACKWALL 129777-07-000(FD)

- LAMP ASM-BRAKE 121950-01-000
- SCREW (SUPPLIED W/LAMP)
- LAMP ASM-STOP TURN/TAIL/BACKUP 117831-01-000 RH
- 117831-02-000 LH
- BULB 37984-01-000 (2)
- 37935-01-000 (2)
- SCREW G39-10-48T (8)

- LAMP 87201-01-000
- SCREW G11-06-12U (EXT) (2)

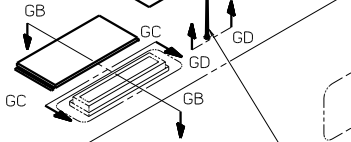
TO SIDE MARKER LAMP

- FASTEN TO VENT.
- WRAP BRACKET LEGS AROUND ANTENNA BASE.
- CONNECTOR-PLUG, TRAILER (113589-01-000) TO BE SUPPLIED LOOSE IN COACH WITH TRAILER TOW PACKAGE.
- TAPE BRANCH BACK ALONG WIRE ASM WITH TAPE 8363-01-000.
- RIVET HEAD TO BE ON THE FIBERGLASS SIDE.
- INSTALL WITH WIRES TOWARDS ROOF.

- SEE DWG 76319-01-000 FOR INSTALLATION OF TV ANTENNA.
- ADD RUBBER BUMPERS TO ROOF UNDER EACH END OF ANTENNA TO PREVENT CONTACT WITH ROOF.

ANT-2 (193) (7) (8)

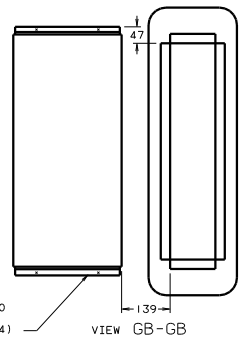
DM-1 (480)



- LAMP 97917-01-CHT
- SCREW G67-10-12U(EXT) (4)
- LAMP 8089-02-000
- SCREW G67-06-10T(EXT) (2)
- CONNECTOR 58028-01-000 (2)
- SEAL

- ANTENNA-SHAFT EXTENDER 109889-04-000
- BRACKET-ANTENNA GROUND 108847-01-000
- ANTENNA 90944-01-000
- CABLE-ANTENNA EXTENSION 77069-02-000 (3)
- SEAL
- LAMP-MARKER, BASE 111102-01-000 (2)
- LAMP-MARKER, LENSE, AMBER 111102-02-000(2)
- SCREW G11-08-12U(EXT) (4)

- SOLAR PANEL 115504-01-000
- SCREW G11-08-16U (4)



- ITASCA ONLY
- ENTERTAINMENT CTR/EXT CSETTE
- A/C ROOF-HIGH EFFICIENCY
- TRAILER HITCH
- ENTERTAINMENT CTR-EXT-W/CD
- TV ANTENNA
- SATELLITE DISH
- SOLAR PANEL - 10 WATT
- REAR STEREO SYSTEM W/CASSETTE
- CODES/STANDARDS-CSA/CMVSS
- CODES STANDARDS/USA