



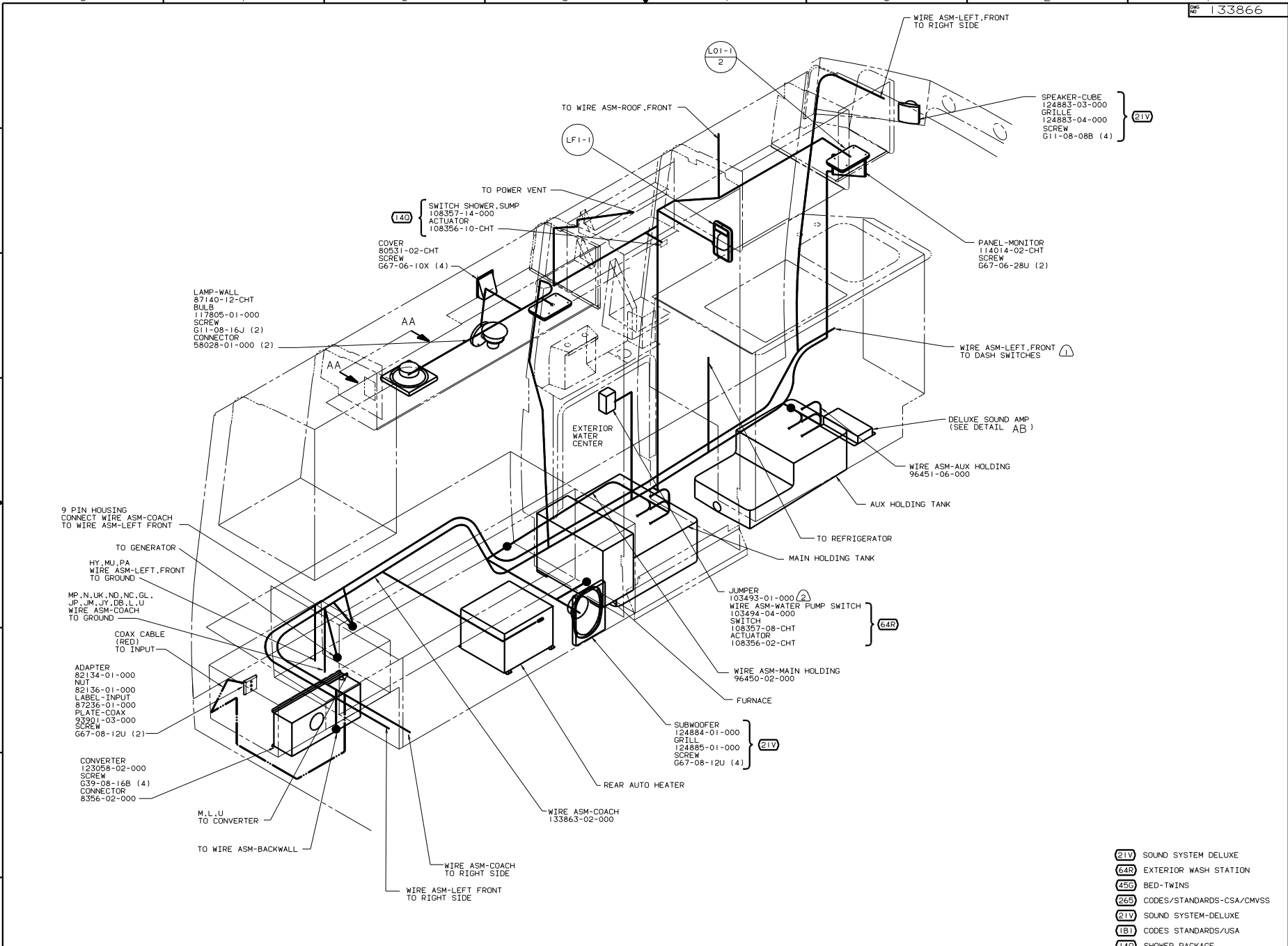
DANGER

Danger of electrical shock, burns or death. Always remove all power sources before attempting any repair, service or diagnostic work. Power can be present from shore power, generator, inverter or battery. All power sources must be disabled and secured before performing any service.



CAUTION

If you lack the skills, tools or equipment to perform diagnostic or repair work leave such work to an authorized Winnebago Industries dealer or other qualified shop.



- 21V SOUND SYSTEM DELUXE
- 64R EXTERIOR WASH STATION
- 45G BED-TWINS
- 265 CODES/STANDARDS-CSA/CMVSS
- 21V SOUND SYSTEM-DELUXE
- 1B1 CODES STANDARDS/USA
- 140 SHOWER PACKAGE

NOTES:

(2) NOT USED WITH 64R

(1) SEE DRAWING INSTL-FRONT END FOR ADDITIONAL INFORMATION.

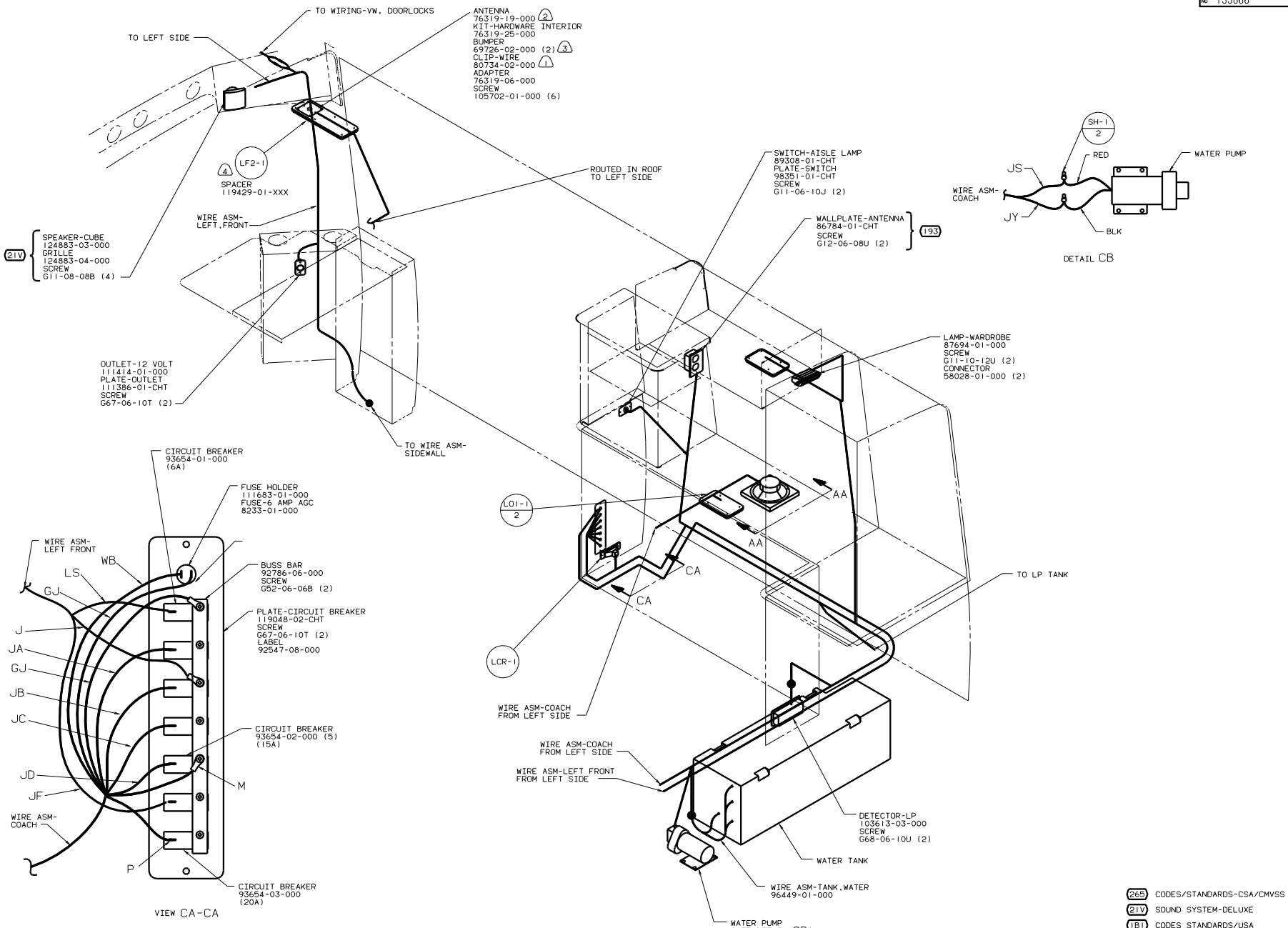
FOR ELECTRICAL TORQUE SPECIFICATIONS SEE DWG NO. 128783-01-000

FOR ELECTRICAL CALLOUTS SEE DWG NO. 121339-01-000

00 222FD 1B1 265 45G

WIRING INSTL-BODY.12V(L)

133866



- (4) PILOT HOLES MUST BE DRILLED FOR SCREW CLEARANCE.
- (3) ADD RUBBER BUMPER TO ROOF UNDER EACH END OF ANTENNA IN DOWN POSITION WHICH MAY IN CONTACT WITH ROOF.
- (2) SEE DRAWING 76319-01-000 FOR ADDITIONAL INFORMATION.
- (1) LOCATE TO RETAIN CABLE BUT NOT RESTRICT TRAVEL OF ANTENNA.

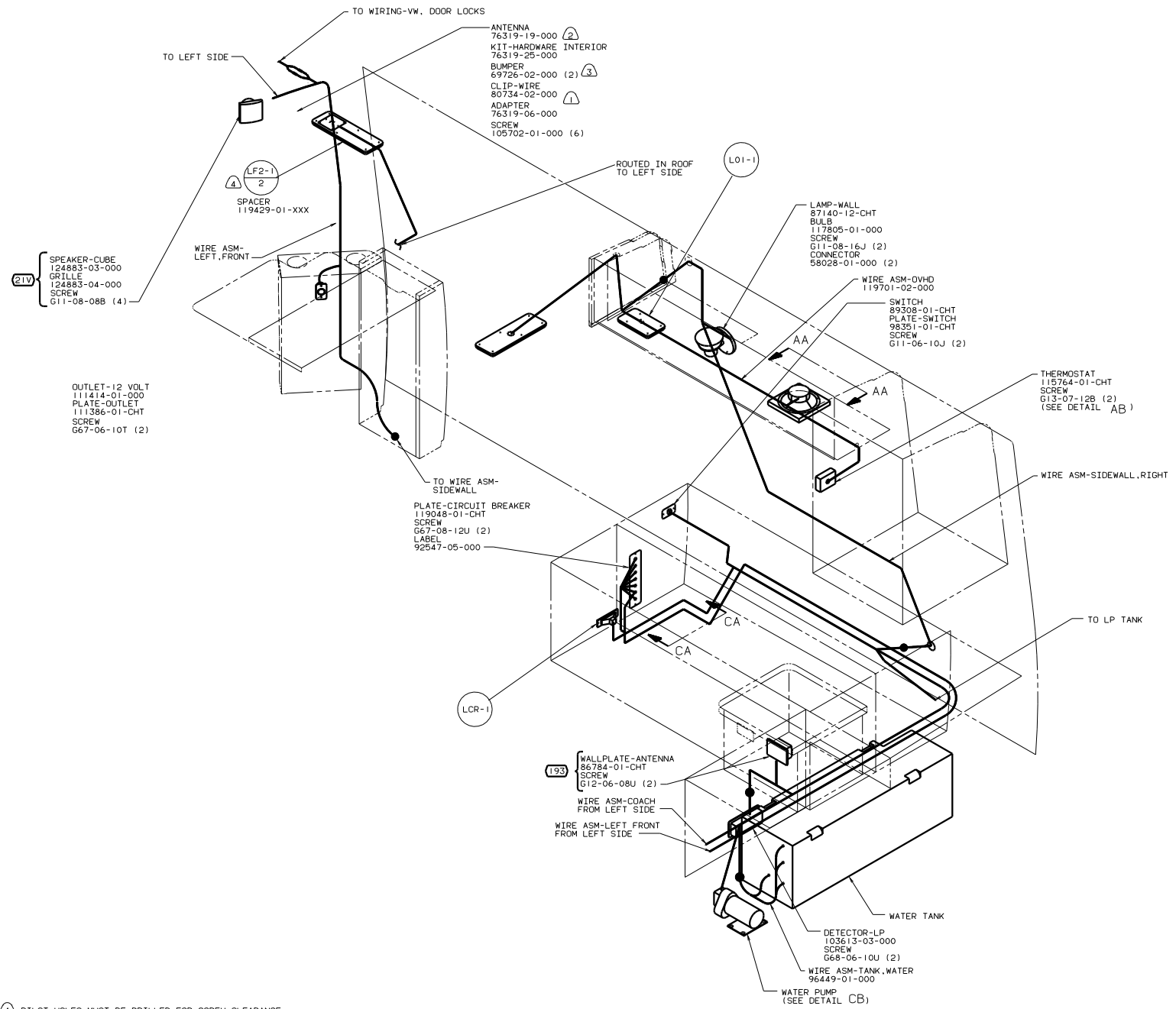
- (265) CODES/STANDARDS-CSA/CMVSS
- (21V) SOUND SYSTEM-DELUXE
- (1B1) CODES STANDARDS/USA
- (193) TV ANTENNA
- (012) BED-DOUBLE-CORNER

FOR ELECTRICAL TORQUE SPECIFICATIONS SEE DWG NO. 128783-01-000

FOR ELECTRICAL CALLOUTS SEE DWG NO. 121339-01-000

00 222FD (1B1) (265) (012)

TITLE: WIRING INSTL-BODY, 12V(R)
SHEET 3 OF 5



- (4) PILOT HOLES MUST BE DRILLED FOR SCREW CLEARANCE.
- (3) ADD RUBBER BUMPER TO ROOF UNDER EACH END OF ANTENNA IN DOWN POSITION WHICH MAY IN CONTACT WITH ROOF.
- (2) SEE DRAWING 76319-01-000 FOR ADDITIONAL INFORMATION.
- (1) LOCATE TO RETAIN CABLE BUT NOT RESTRICT TRAVEL OF ANTENNA.

NOTES:

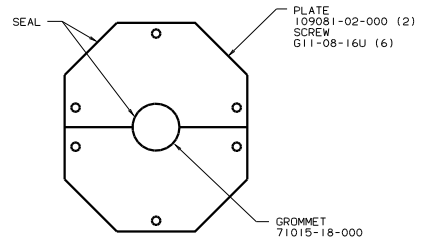
- (456) BED-TWINS
- (265) CODES/STANDARDS-CSA/CMVSS
- (21V) SOUND SYSTEM-DELUXE
- (181) CODES STANDARDS/USA
- (193) TV ANTENNA

FOR ELECTRICAL
TORQUE
SPECIFICATIONS
SEE DWG NO.
128783-01-000

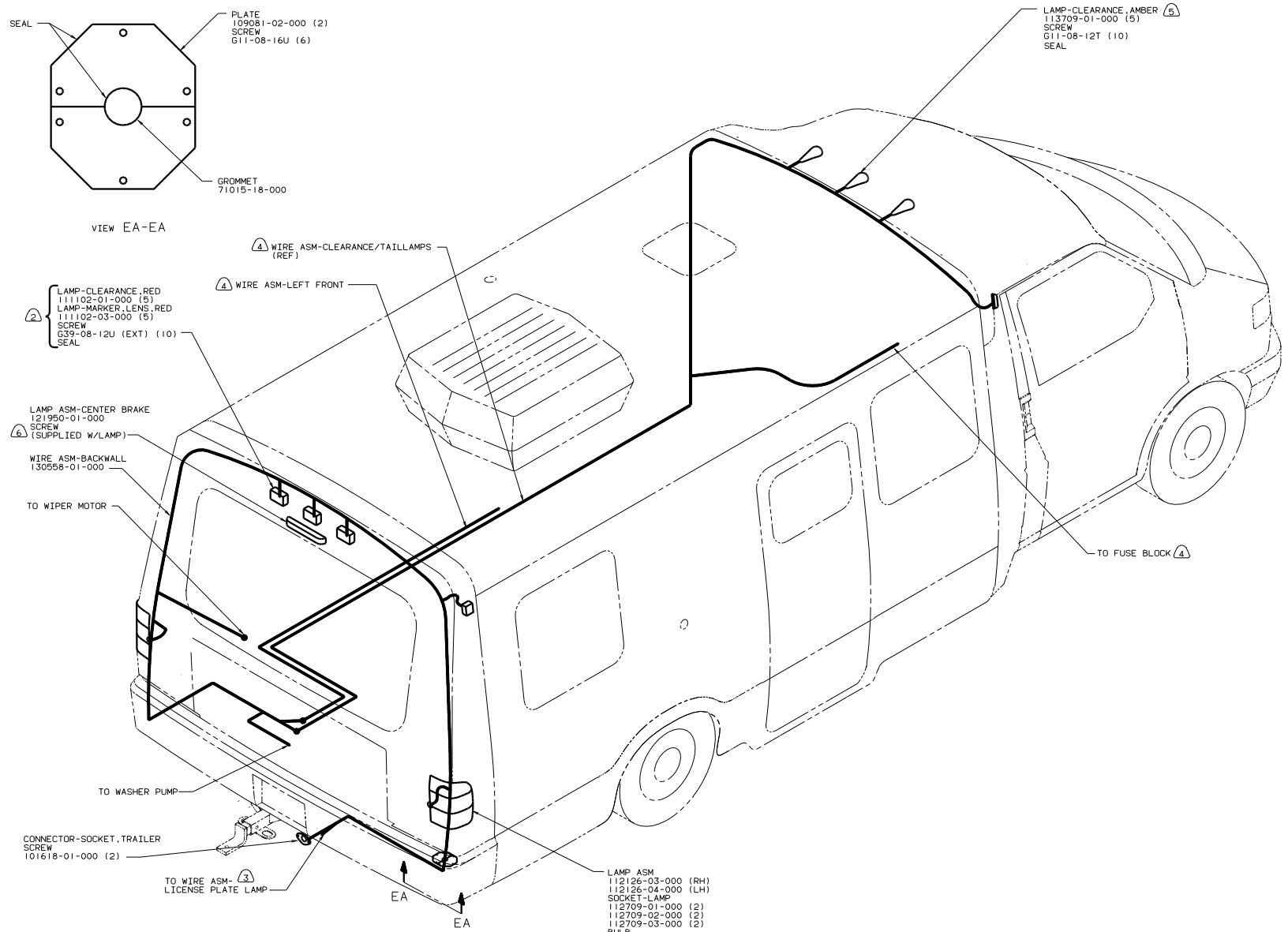
(X-X)
FOR
ELECTRICAL
CALLOUTS
SEE DWG NO.
121339-01-000

00 222FD (181) (265) (456)

TITLE		WIRING INSTL-BODY, 12V(R)	
DO NOT SCALE DRAWING	DATE	1.6	NO
SHEET	4	OF	5
DWG NO.		133866	



VIEW EA-EA



- ⑥ ON INTERIOR OF CAP. GRIND OFF TIP OF SCREW PRIOR TO SEALING (TO PROVIDE INNER LINER CLEARANCE).
 - ⑤ CONNECT WIRE HX (PUR) TO RED WIRE AND WIRE MS (GRN) TO WHT WIRE.
 - ④ SEE WIRING INSTL-FRONT END FOR ADDITIONAL INFORMATION.
 - ③ SEE BUMPER ASM-REAR FOR ADDITIONAL INFORMATION.
 - ② LOCATE ON CENTER OF HOLE IN CAP ASM-REAR.
1. CONNECTOR-PLUG, TRAILER 113589-01-000 TO BE SUPPLIED LOOSE IN COACH WITH TRAILER TOW PACKAGE.

NOTES:

FOR ELECTRICAL TORQUE SPECIFICATIONS SEE DWG NO. 128783-01-000

FOR ELECTRICAL CALLOUTS SEE DWG NO. 121339-01-000

265 CODES/STANDARDS-CSA/CMVSS
181 CODES STANDARDS/USA
00 222FD 181 265

WIRING INSTL-BODY, 12V(EXT)
SHEET 5 OF 5
133866