



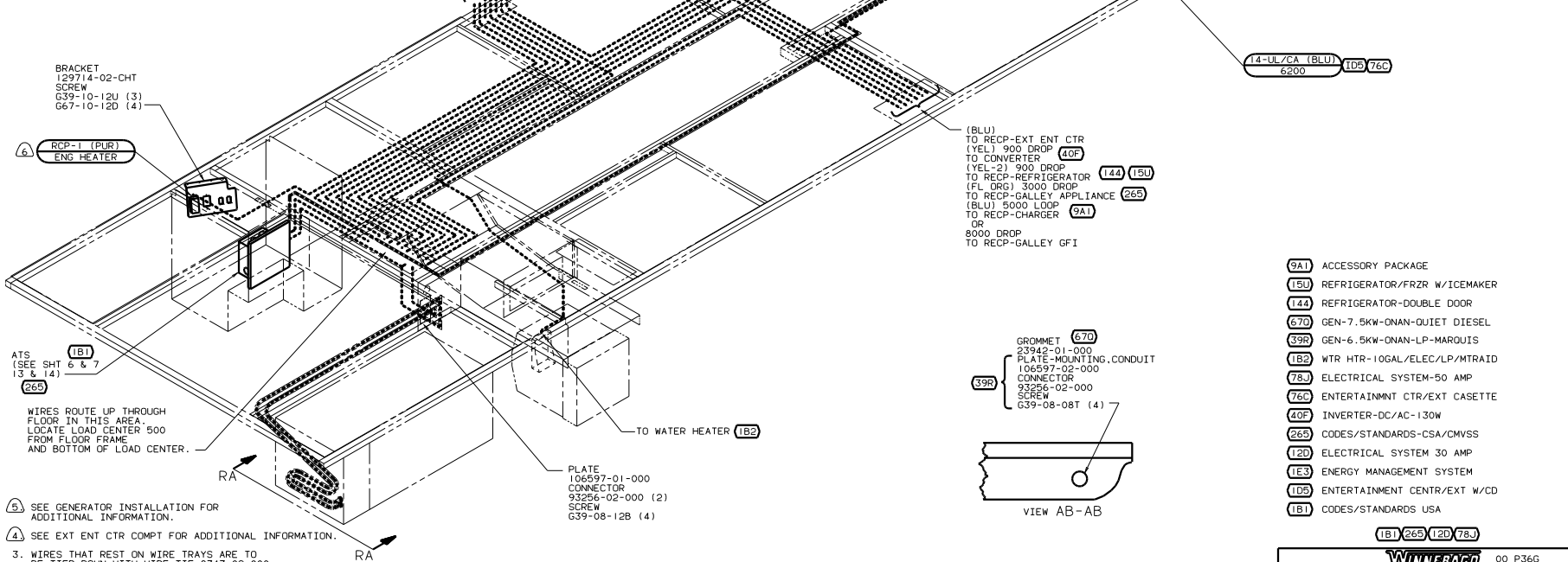
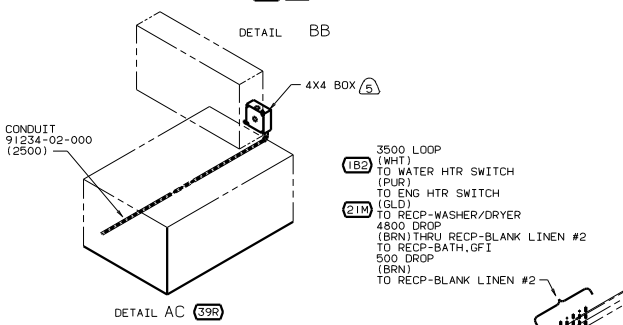
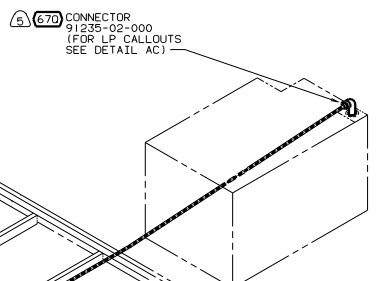
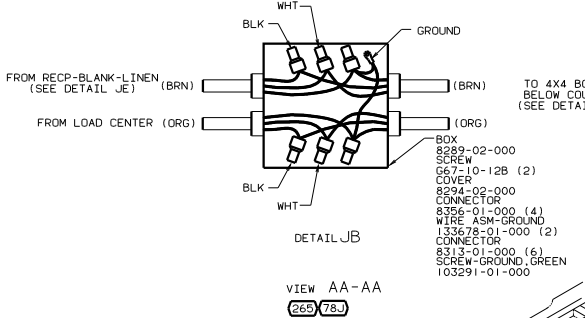
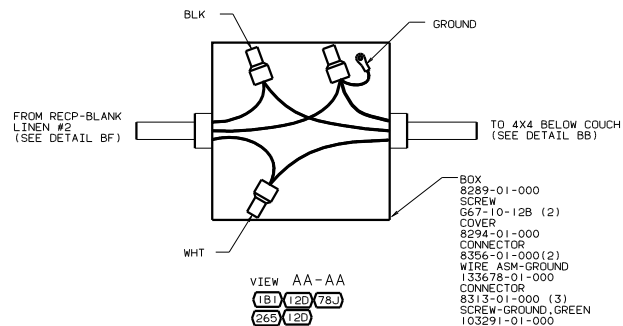
DANGER

Danger of electrical shock, burns or death. Always remove all power sources before attempting any repair, service or diagnostic work. Power can be present from shore power, generator, inverter or battery. All power sources must be disabled and secured before performing any service.



CAUTION

If you lack the skills, tools or equipment to perform diagnostic or repair work leave such work to an authorized Winnebago Industries dealer or other qualified shop.



- (9A1) ACCESSORY PACKAGE
- (1B1) REFRIGERATOR/FRZ W/ICEMAKER
- (144) REFRIGERATOR-DOUBLE DOOR
- (67D) GEN-7.5KW-ONAN-QUIET DIESEL
- (39R) GEN-6.5KW-ONAN-LP-MARQUIS
- (1B2) WTR HTR-10GAL/ELEC/LP/WTR/AID
- (78J) ELECTRICAL SYSTEM-50 AMP
- (76C) ENTERTAINMENT CTR/EXT CASSETTE
- (40F) INVERTER-DC/AC-130W
- (26S) CODES/STANDARDS-CSA/CMVSS
- (12D) ELECTRICAL SYSTEM 30 AMP
- (1E3) ENERGY MANAGEMENT SYSTEM
- (1D5) ENTERTAINMENT CTR/EXT W/CD
- (1B1) CODES/STANDARDS USA

- NOTES:
1. ALL WIRE TO BE CLAMPED WITH CLAMP 10495-01-000 OR CLIP 80734-02-000 EVERY 700. USE SCREW 667-10-12B UNLESS OTHERWISE SPECIFIED.
 2. CLAMP TO FLOOR SUPPORT TUBES AS NECESSARY WITH CLAMP 10497-01-000
 3. WIRES THAT REST ON WIRE TRAYS ARE TO BE TIED DOWN WITH WIRE TIE 8343-02-000.
 4. SEE EXT ENT CTR COMPT FOR ADDITIONAL INFORMATION.
 5. SEE GENERATOR INSTALLATION FOR ADDITIONAL INFORMATION.
- (A) USE PURPLE IDENTIFICATION FOR EVERYTHING EXCEPT 50 AMP CANADA.

FOR ELECTRICAL TORQUE SPECIFICATIONS SEE DWG NO. 128783-01-000

FOR ELECTRICAL CALLOUTS SEE DWG NO. 121339-01-000

(1B1) (26S) (12D) (78J)

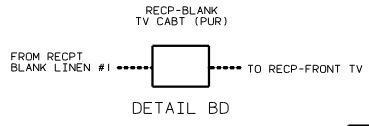
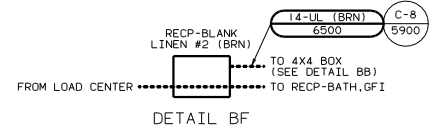
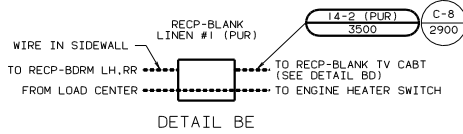
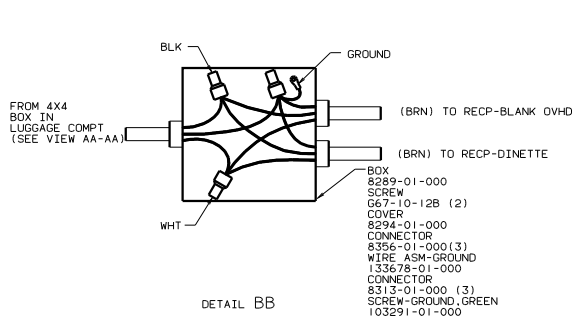
WINN-DIXIE 00 P36G

DATE	UNSPECIFIED TOLERANCES ARE:	MATERIAL
DATE	ONE-PLACE (1X.1)	
DATE	ONE-PLACE (1X.001)	
DATE	ONE-PLACE (1X.0001)	
DATE	ONE-PLACE (1X.00001)	
DATE	ONE-PLACE (1X.000001)	
DATE	ONE-PLACE (1X.0000001)	
DATE	ONE-PLACE (1X.00000001)	
DATE	ONE-PLACE (1X.000000001)	

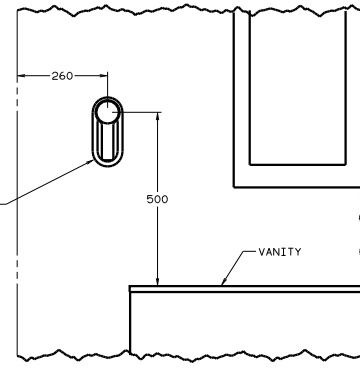
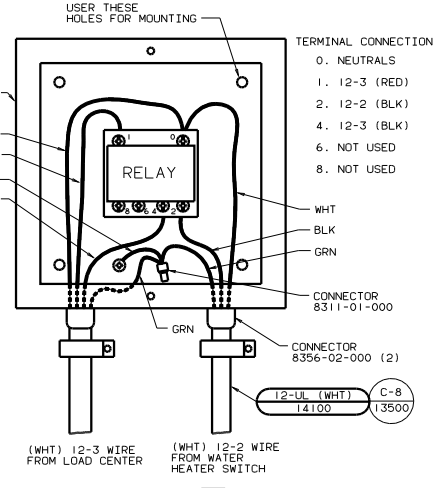
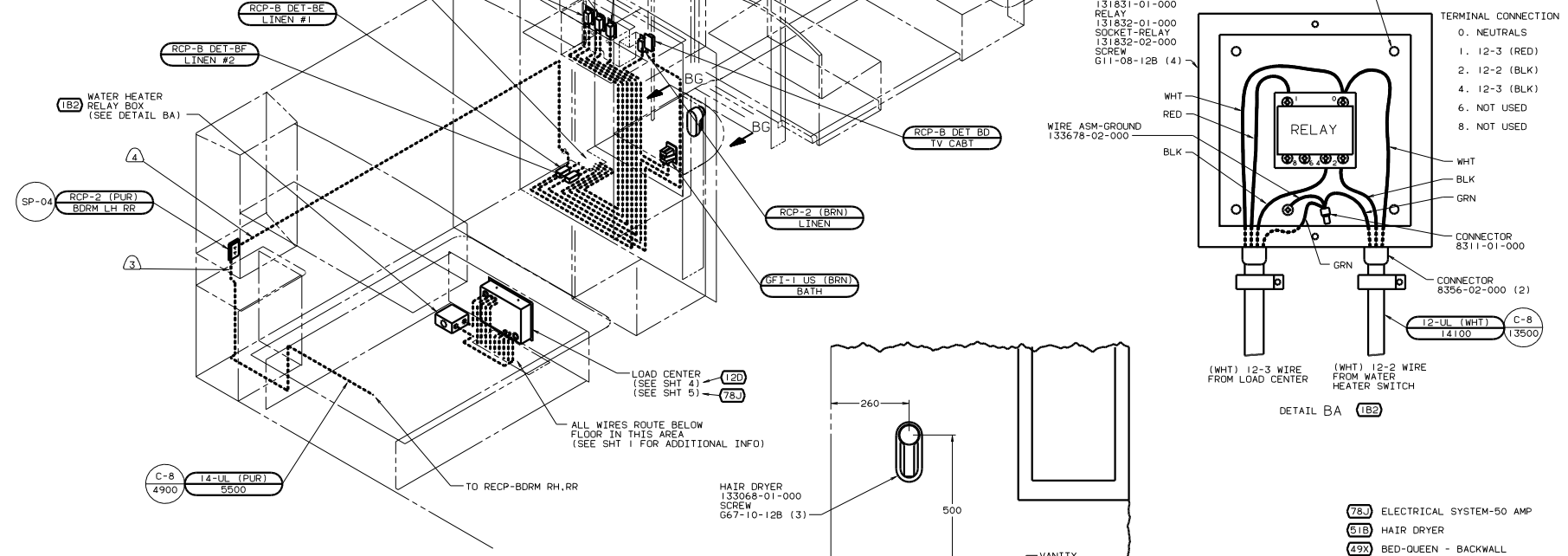
WIRING INSTL - BODY (BLF US/CA)

SHEET 1 OF 15

133843

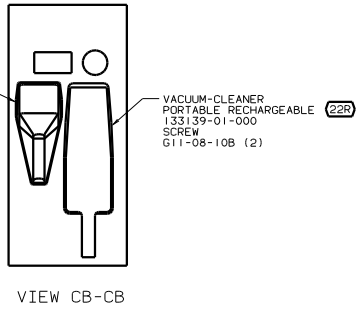
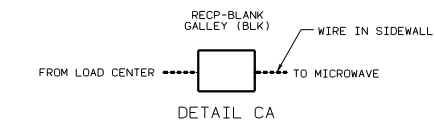
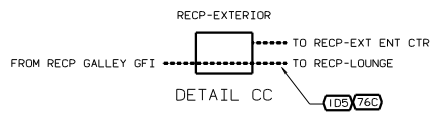
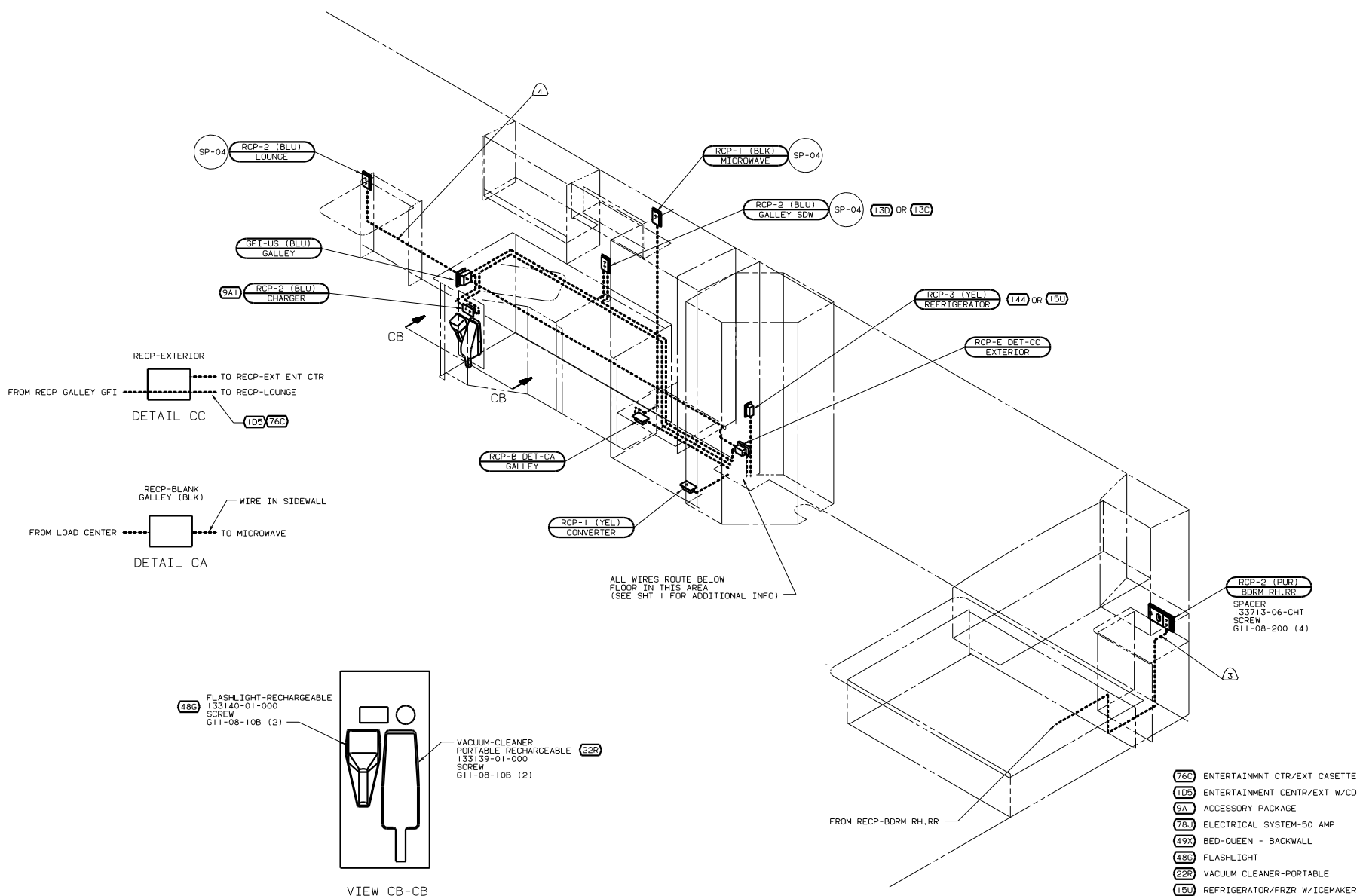


ALL WIRES ROUTE BELOW FLOOR IN THIS AREA (SEE SHT 1 FOR ADDITIONAL INFO)



- NOTES:
- ④ WIRE IN SIDEWALL.
 - ③ ROUTE WIRE IN SIDEWALL DURING INSTALLATION.
 - 2. ALL WIRES ARE TO BE CLAMPED WITH CLAMP 10497-05-000 WITHIN 200 OF OUTLET BOXES AND SPLICES. USE SCREW G67-10-12B.
 - 1. ALL WIRE TO BE CLAMPED WITH CLAMP 10495-05-000 OR CLIP 80734-02-000 EVERY 700. USE SCREW G67-10-12B UNLESS OTHERWISE SPECIFIED.

- ⑦⑧ ELECTRICAL SYSTEM-50 AMP
 - ⑤①B HAIR DRYER
 - ④⑨X BED-QUEEN - BACKWALL
 - ②①M WASHER/DRYER PREP
 - ①②D ELECTRICAL SYSTEM 30 AMP
 - ①B② WTR HTR-10GAL/ELEC/LP/MTR/AID
 - ①B① CODES/STANDARDS USA
 - ⑥⑨L SLIDEOUT FRONT LEFT
 - 00 P36G ①B① ①②D ⑦⑧③ ④⑨X ⑥⑨U
- FOR ELECTRICAL TORQUE SPECIFICATIONS SEE DWG NO. 128783-01-000
- FOR ELECTRICAL CALLOUTS SEE DWG NO. 121339-01-000
- WIRING INSTL-BODY(LH30/50US)
- sheet 2 of 15
- 133843



ALL WIRES ROUTE BELOW FLOOR IN THIS AREA (SEE SHIT 1 FOR ADDITIONAL INFO)

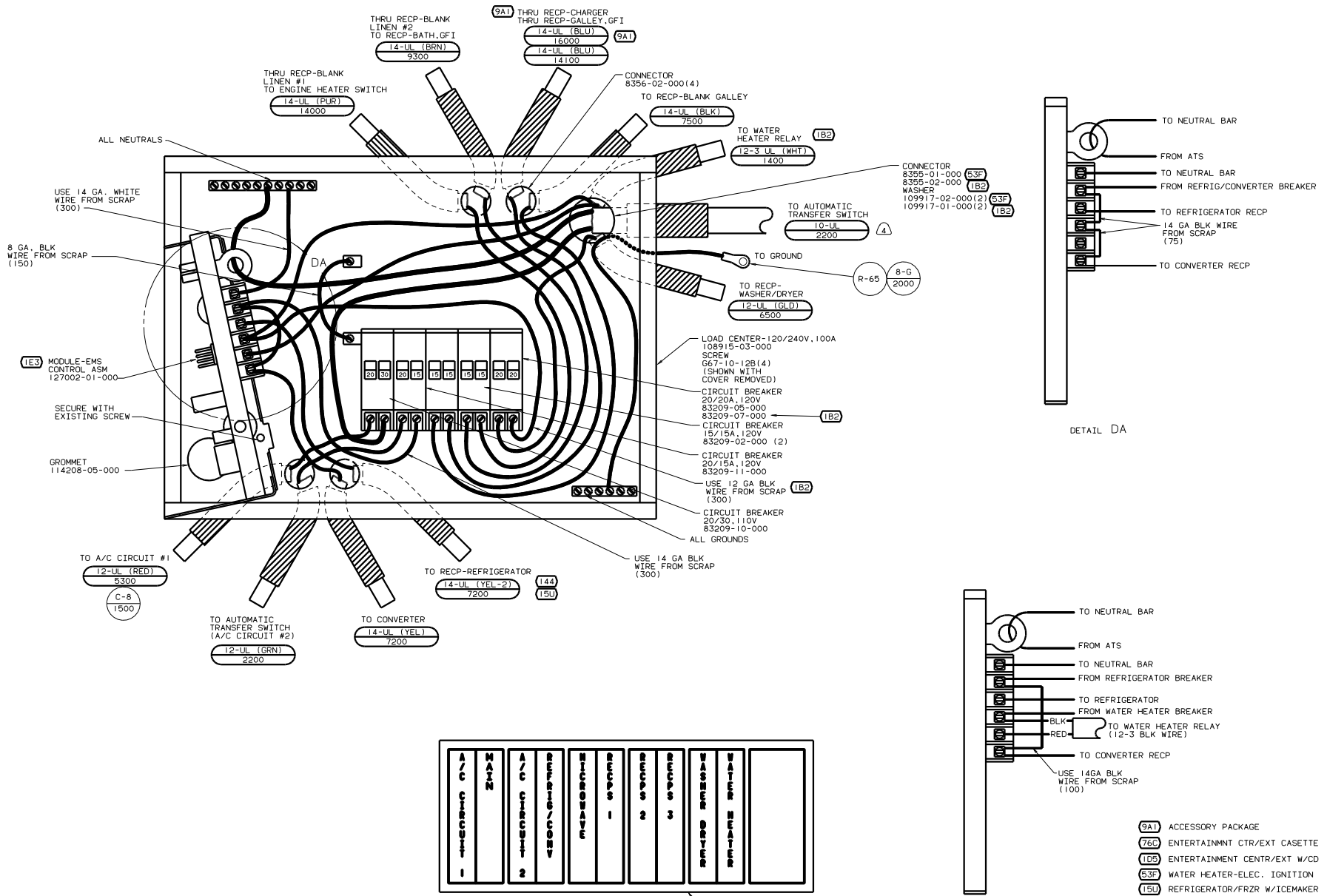
- 76C ENTERTAINMENT CTR/EXT CASETTE
- 1D5 ENTERTAINMENT CTR/EXT W/CD
- 9A1 ACCESSORY PACKAGE
- 78J ELECTRICAL SYSTEM-50 AMP
- 49X BED-QUEEN - BACKWALL
- 48B FLASHLIGHT
- 22R VACUUM CLEANER-PORTABLE
- 1B1 REFRIGERATOR/FRZR W/ICEMAKER
- 144 REFRIGERATOR-DOUBLE DOOR
- 13D MICROWAVE_OVEN WITH FAN
- 13C MICRO/CONV OVEN W/RANGE FAN
- 12D ELECTRICAL SYSTEM 30 AMP
- 1B1 CODES/STANDARDS USA
- 09L SLIDEOUT ROOM FRONT LEFT

- 4 WIRE IN SIDEWALL.
- 3 ROUTE WIRE IN SIDEWALL DURING INSTALLATION.
2. ALL WIRES ARE TO BE CLAMPED WITH CLAMP 10497-05-000 WITHIN 200 OF OUTLET BOXES AND SPLICES. USE SCREW G67-10-12B.
1. ALL WIRE TO BE CLAMPED WITH CLAMP 10495-05-000 OR CLIP 80734-02-000 EVERY 700. USE SCREW G67-10-12B UNLESS OTHERWISE SPECIFIED.

FOR ELECTRICAL TORQUE SPECIFICATIONS SEE DWG NO. 128783-01-000

FOR ELECTRICAL CALLOUTS SEE DWG NO. 121339-01-000

WIRING INSTL - BODY (RH30/50US)
 SHEET 3 OF 15
 00 P36G (1B) (12D) (78J) (49X) (09L)
 133843



A / C CIRCUIT 1	MAIN	A / C CIRCUIT 2	REFRIG / CONV	WATER HEATER	WASHER DRYER	RECP 3	RECP 2	RECP 1	WTR HEATER
-----------------------	------	-----------------------	------------------	-----------------	-----------------	--------	--------	--------	---------------

LABEL 95721-31-000

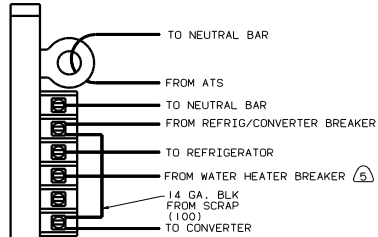
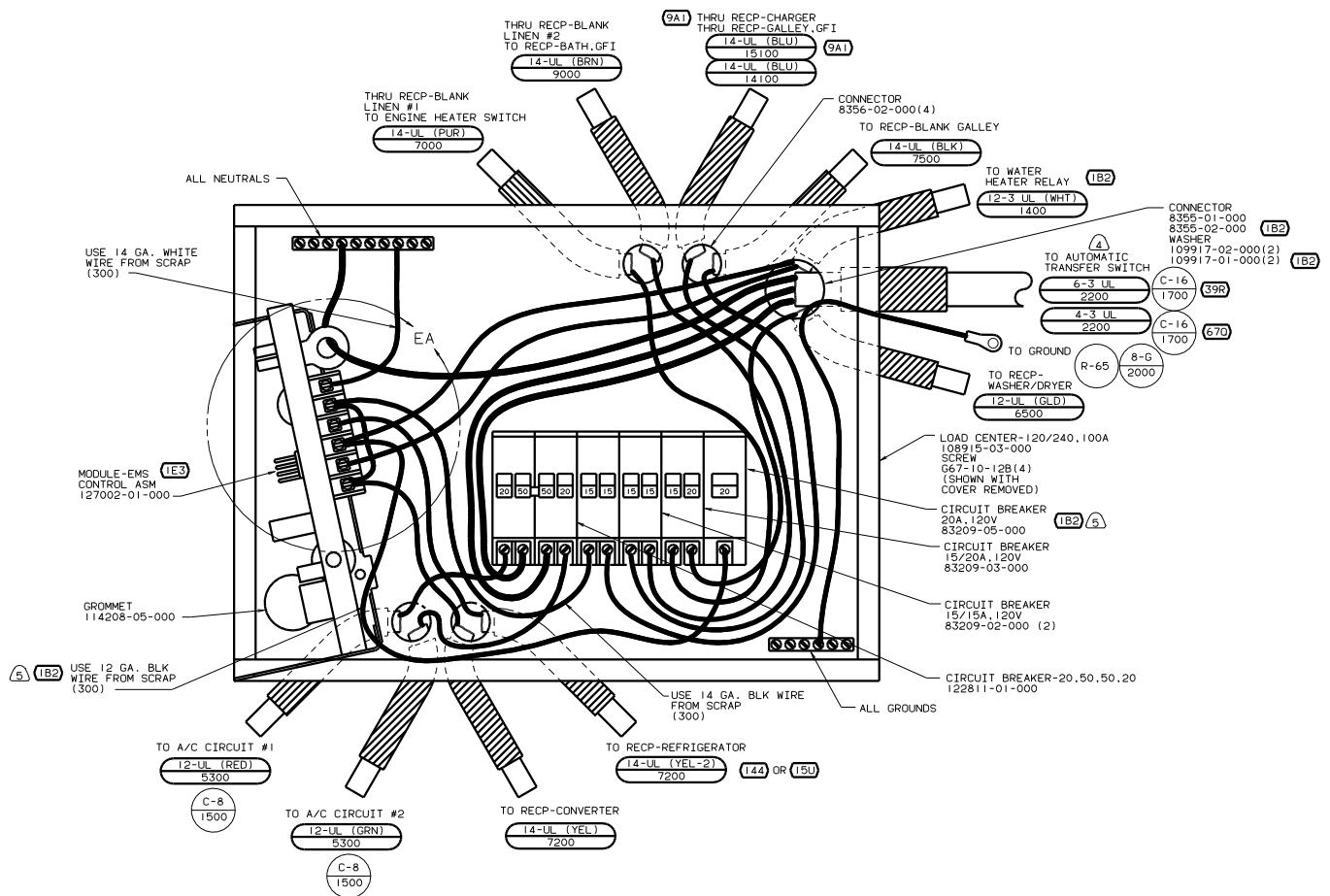
INSTALL LABEL ON FRONT PANEL BELOW BREAKERS BETWEEN MOUNTING HOLES

4. WIRE MUST BE 600 LONG INSIDE BOX, ALL OTHERS TO BE 300.
3. ALL CABLES SHALL BE COVERED WITH CONDUIT-CONVOLUTE, SLIT 41953-01-000 UNLESS OTHERWISE SPECIFIED, 600 LESS THAN CABLE LENGTH.
2. ATTACH WIRES TO BACKSIDE OF LOAD CENTER, USE EXISTING HOLES AND TIE-WIRE 116673-01-000.
1. ALL GROUND WIRES TO BE COVERED WITH TUBING 8041-02-000.

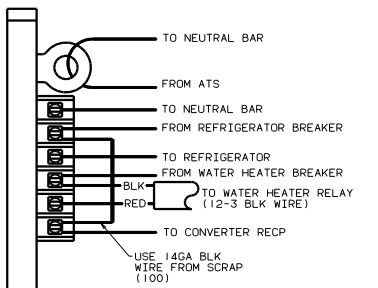
- (9A1) ACCESSORY PACKAGE
- (76C) ENTERTAINMENT CTR/EXT CASETTE
- (1D5) ENTERTAINMENT CENTR/EXT W/CD
- (53F) WATER HEATER-ELEC. IGNITION
- (15U) REFRIGERATOR/FRZR W/ICEMAKER
- (144) REFRIGERATOR-DOUBLE DOOR
- (1B2) WTR HTR-10GAL/ELEC/LP/MTR/ID
- (IE3) ENERGY MANAGEMENT SYSTEM
- (1B1) CODES STANDARDS/USA
- (12D) ELECTRICAL SYSTEM 30 AMP

FOR ELECTRICAL TORQUE SPECIFICATIONS SEE DWG NO. 128783-01-000

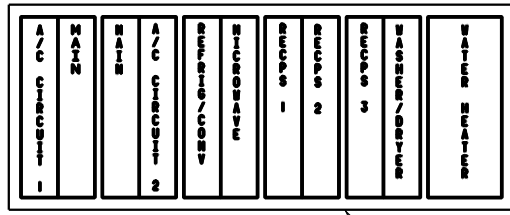
FOR ELECTRICAL CALLOUTS SEE DWG NO. 121339-01-000



DETAIL EA



DETAIL EA



LABEL 95721-33-000

INSTALL LABEL ON FRONT PANEL BELOW BREAKERS BETWEEN MOUNTING HOLES

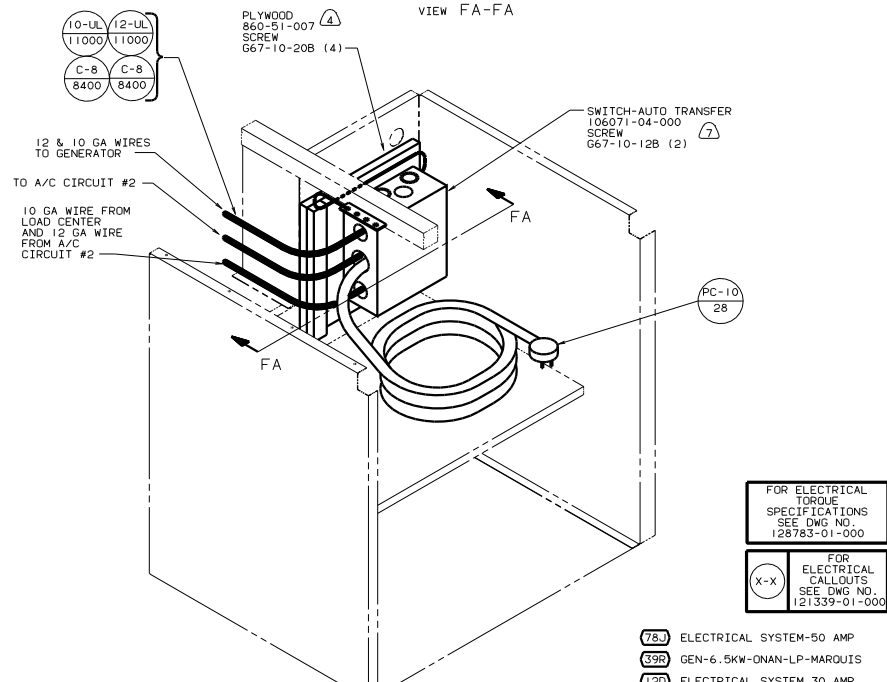
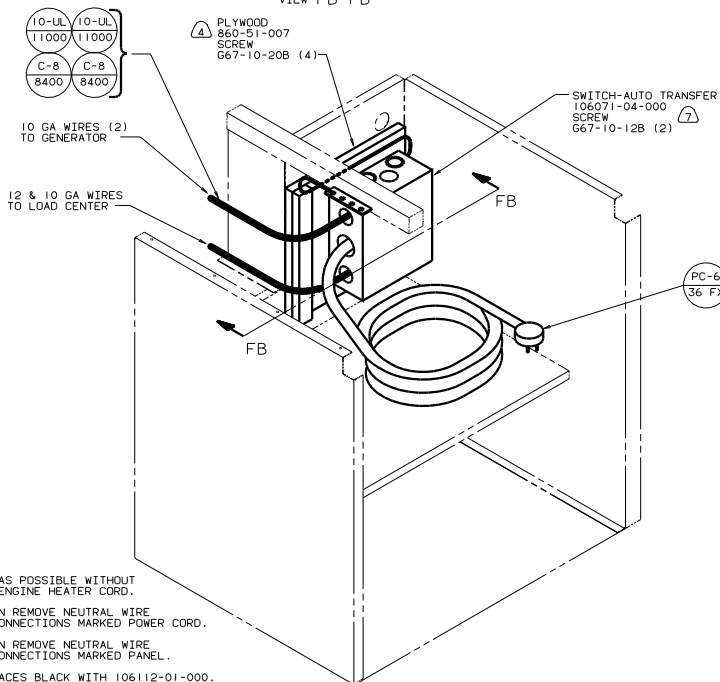
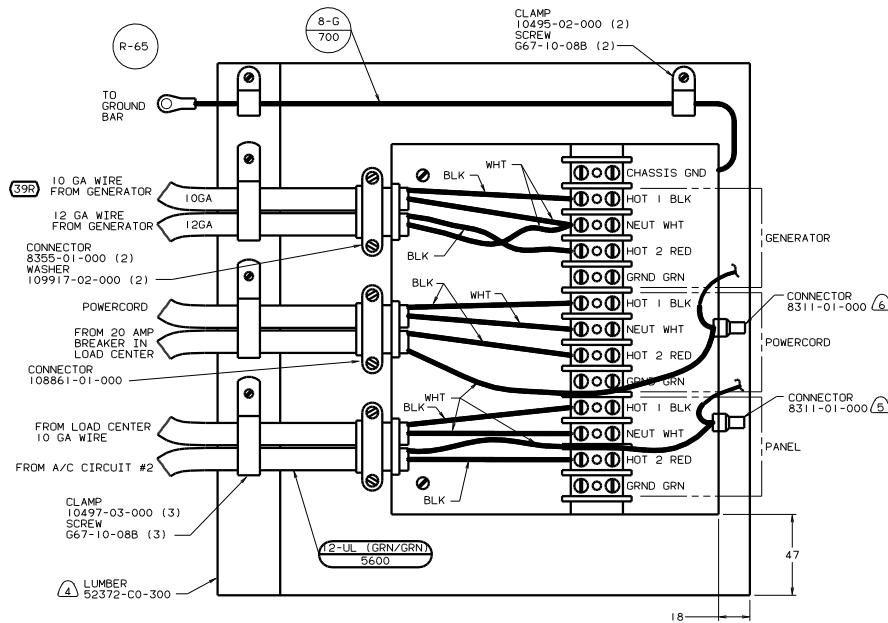
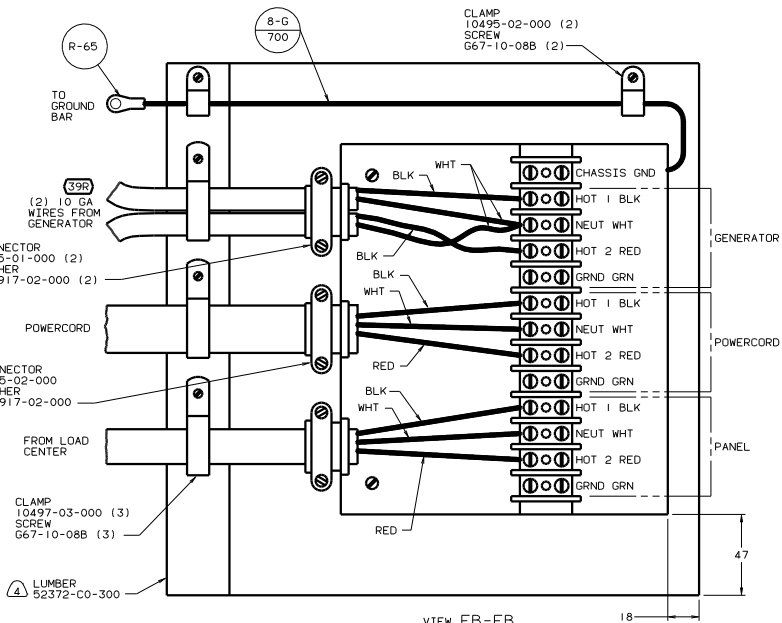
- 5. THIS BREAKER MUST BE INSTALLED AND WIRED TO EMS EVEN WITHOUT 1B2
- 4. WIRE MUST BE 600 LONG INSIDE BOX, ALL OTHERS TO BE 300.
- 3. ALL CABLES SHALL BE COVERED WITH CONDUIT-CONVOLUTE, SLIT 41953-01-000 UNLESS OTHERWISE SPECIFIED. 600 LESS THAN CABLE LENGTH.
- 2. ATTACH WIRES TO BACKSIDE OF LOAD CENTER, USE EXISTING HOLES AND TIE-WIRE 116673-01-000.
- 1. ALL GROUND WIRES TO BE COVERED WITH TUBING 8041-02-000.

- 78C ENTERTAINMNT CTR/EXT CASSETTE
- 9A1 ACCESSORY PACKAGE
- 1D5 ENTERTAINMENT CENTR/EXT W/CD
- 670 GEN-7.5KW-ONAN-QUIET DIESEL
- 39R GEN-6.5KW-ONAN-LP-MARQUIS
- 15U REFRIGERATOR/FRZR W/ICEMAKER
- 144 REFRIGERATOR-DOUBLE DOOR
- 1B2 WTR HTR-10GAL/ELEC/LP/MTR/RAID
- 78J ELECTRICAL SYSTEM - 50 AMP
- 1E3 ENERGY MANAGEMNT SYSTEM
- 1B1 CODES STANDARDS/USA

FOR ELECTRICAL TORQUE SPECIFICATIONS SEE DWG NO. 128783-01-000

FOR ELECTRICAL CALLOUTS SEE DWG NO. 121339-01-000

WIRING INSTL-BODY, 110V(50LCUS) SHEET 5 OF 15 133843



- (7) MOUNT ATS AS HIGH AS POSSIBLE WITHOUT COVERING HOLE FOR ENGINE HEATER CORD.
- (6) FOR THIS CONNECTION REMOVE NEUTRAL WIRE MARKED BLUE FROM CONNECTIONS MARKED POWER CORD.
- (5) FOR THIS CONNECTION REMOVE NEUTRAL WIRE MARKED BLUE FROM CONNECTIONS MARKED PANEL.
- (4) PAINT EXPOSED SURFACES BLACK WITH 106112-01-000.
- 3. ALL 110V STRANDED WIRE W/O TERMINALS TO BE STRIPPED 10MM AND SOLDER DIPPED.
- 2. GROUND WIRES NOT SHOWN FOR CLARITY.
- 1. ALL WIRES TO BE CLAMPED WITH IN 200 OF BOX.

FOR ELECTRICAL TORQUE SPECIFICATIONS SEE DWG NO. 128783-01-000

FOR ELECTRICAL CALLOUTS SEE DWG NO. 121339-01-000

- (78J) ELECTRICAL SYSTEM-50 AMP
- (39R) GEN-6.5KW-ONAN-LP-MARQUIS
- (12D) ELECTRICAL SYSTEM 30 AMP
- (1B1) CODES/STANDARDS USA

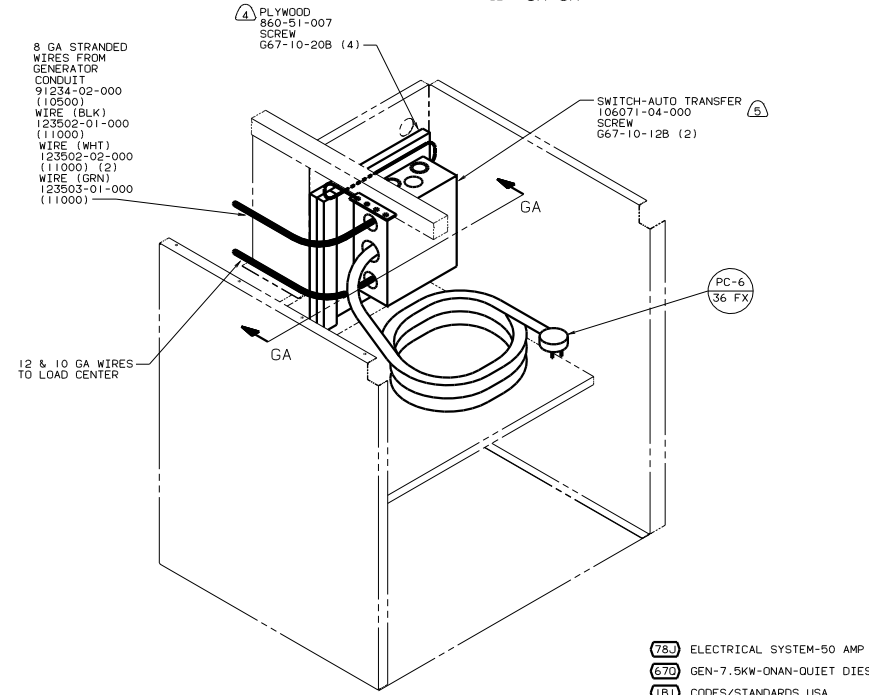
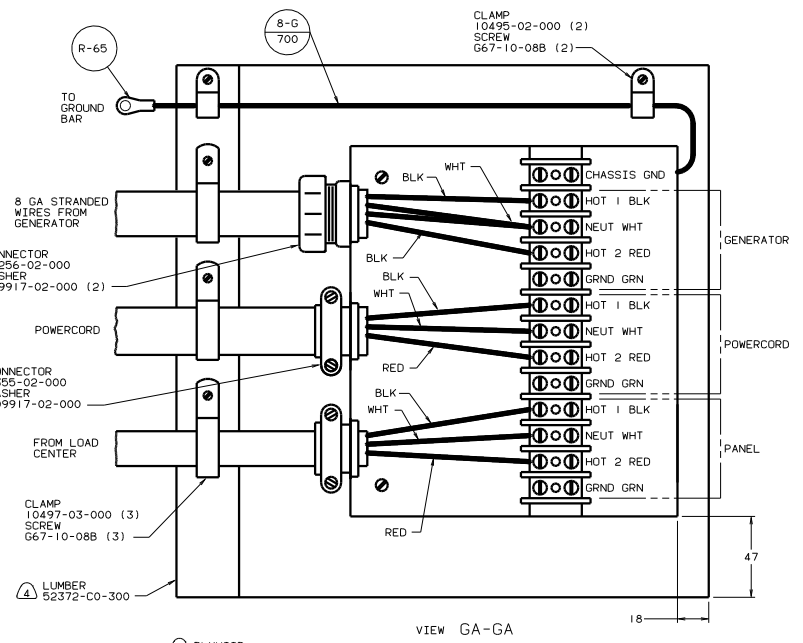
00 P36G (1B1) (12D) (39R)

FILE NO. 133843

WIRING INSTL-BODY (ATS) US

SHEET 6 OF 15

133843



- 5 MOUNT ATS AS HIGH AS POSSIBLE WITHOUT COVERING HOLE FOR ENGINE HEATER CORD.
- 4 PAINT EXPOSED SURFACES BLACK WITH 106112-01-000.
3. ALL 110V STRANDED WIRE W/O TERMINALS TO BE STRIPPED 10MM AND SOLDER DIPPED.
2. GROUND WIRES NOT SHOWN FOR CLARITY.
1. ALL WIRES TO BE CLAMPED WITH IN 200 OF BOX.

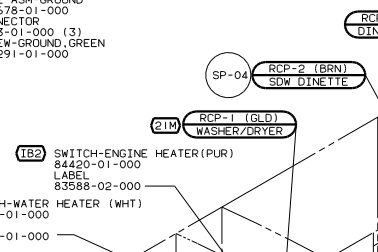
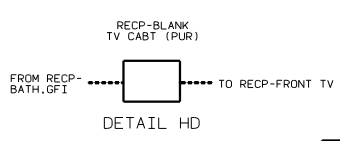
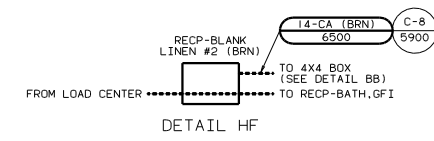
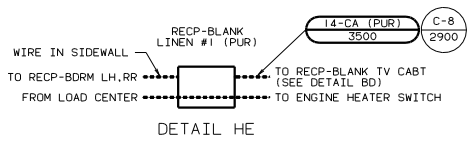
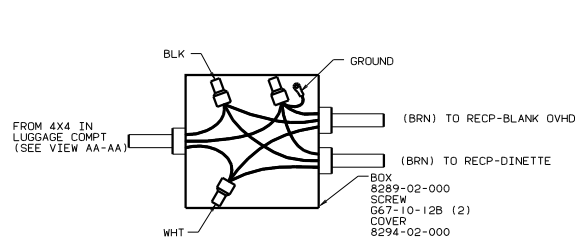
FOR ELECTRICAL TORQUE SPECIFICATIONS SEE DWG NO. 128783-01-000	FOR ELECTRICAL CALLOUTS SEE DWG NO. 121339-01-000
--	---

- 78J ELECTRICAL SYSTEM-50 AMP
- 67D GEN-7.5KW-QNAN-QUIET DIESEL
- 1B1 CODES/STANDARDS USA

00 P36G 1B1

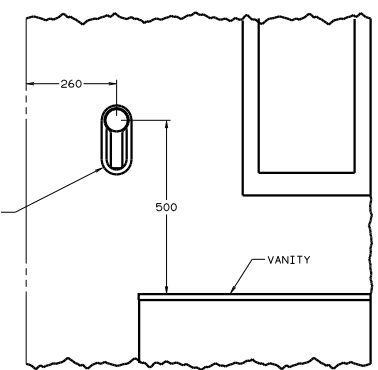
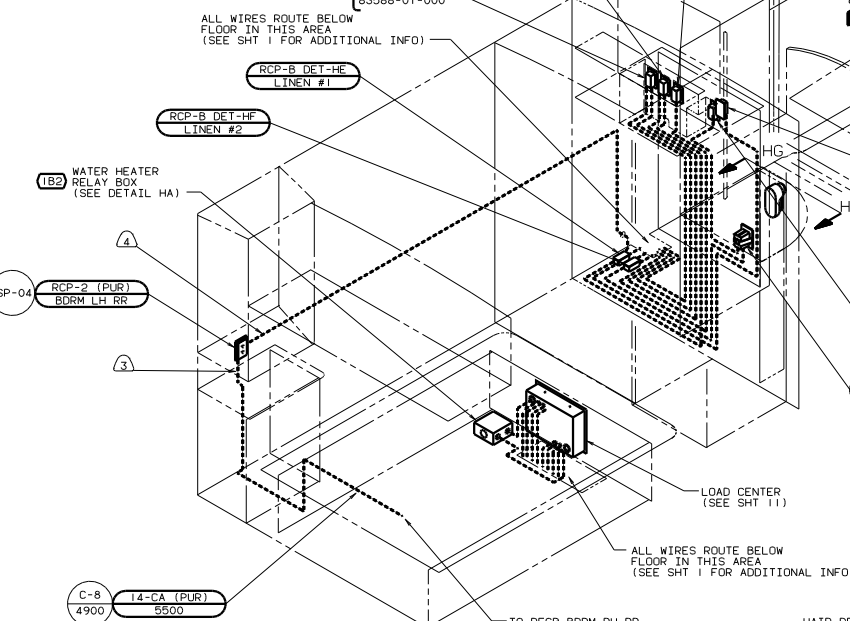
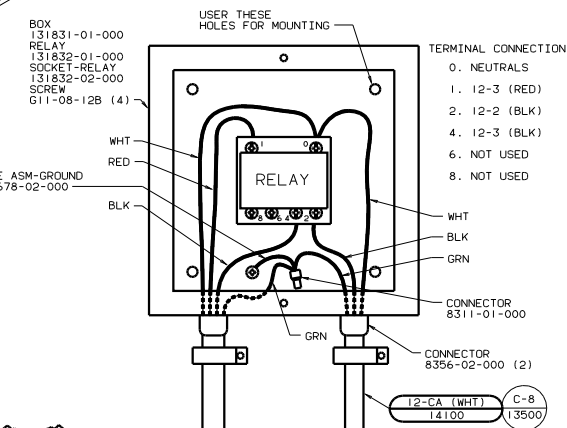
FILE NO	WIRING INSTL-BODY(ATS US)
DRG NO	133843
SHEET 7 OF 15	1/E

67D 78J



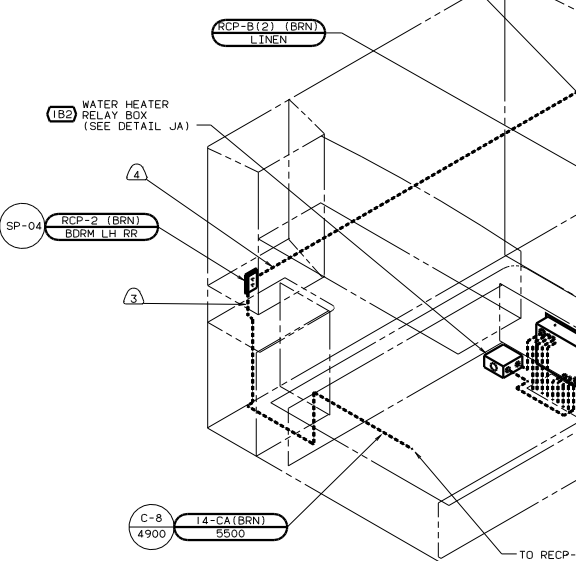
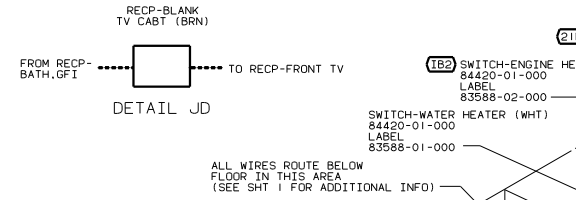
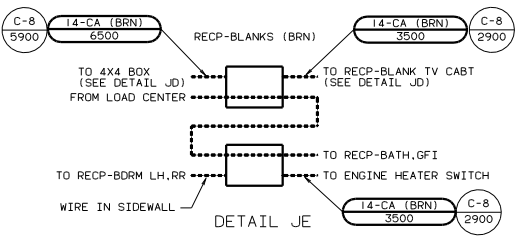
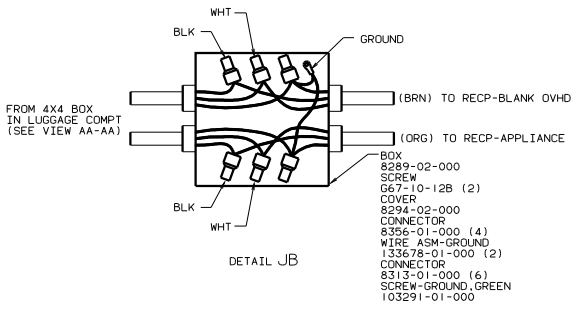
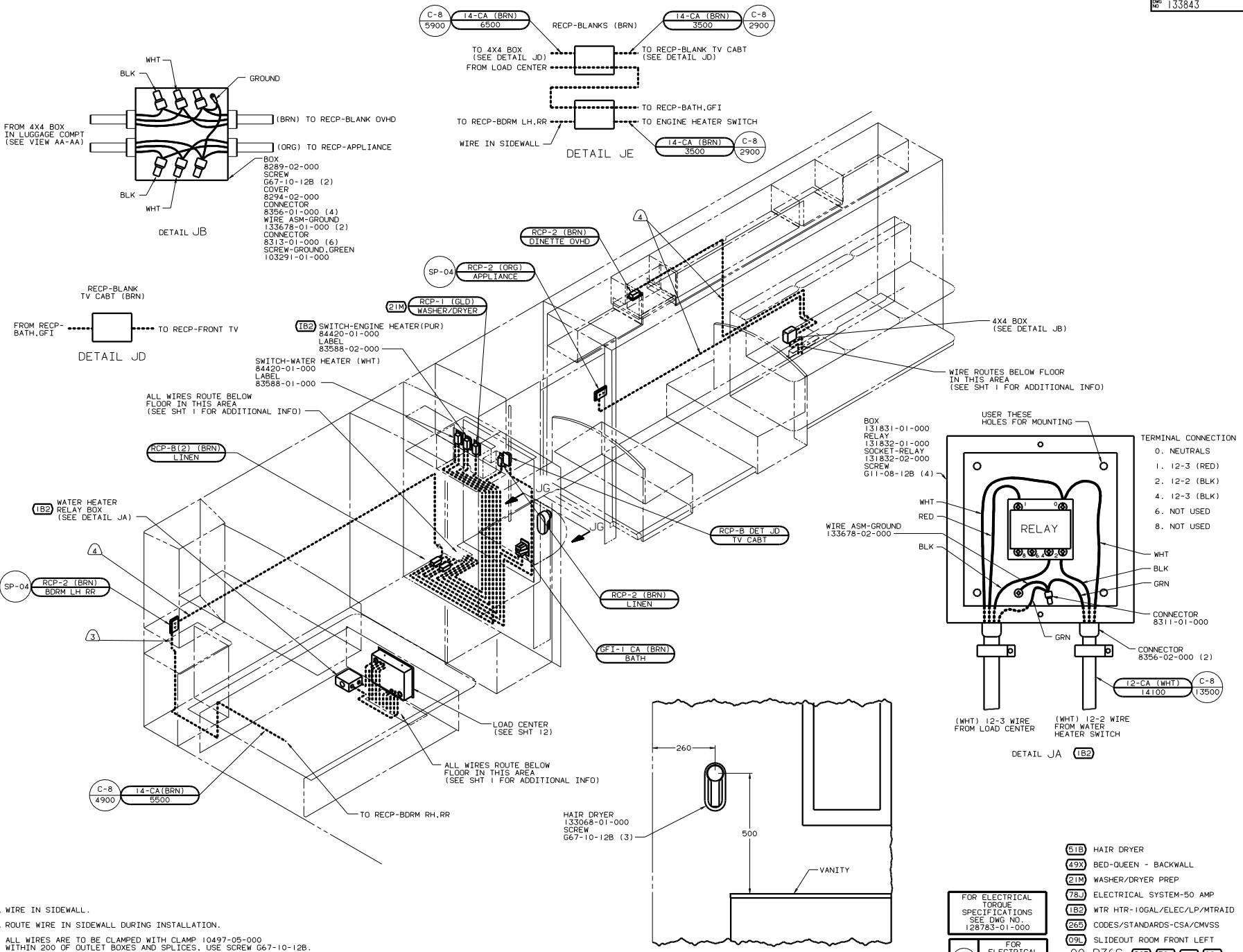
4X4 BOX (SEE DETAIL HB)

WIRE ROUTES BELOW FLOOR IN THIS AREA (SEE SHT 1 FOR ADDITIONAL INFO)

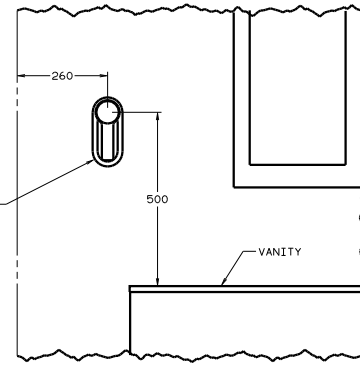
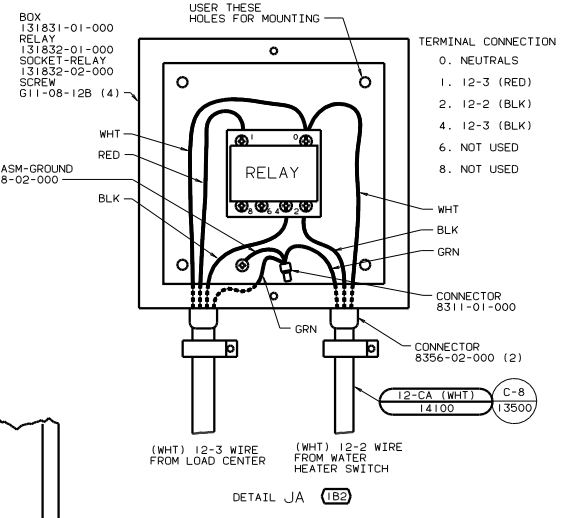


- NOTES:
- WIRE IN SIDEWALL.
 - ROUTE WIRE IN SIDEWALL DURING INSTALLATION.
 - ALL WIRES ARE TO BE CLAMPED WITH CLAMP 10497-05-000 WITHIN 200 OF OUTLET BOXES AND SPLICES. USE SCREW 667-10-12B.
 - ALL WIRE TO BE CLAMPED WITH CLAMP 10495-05-000 OR CLIP 80734-02-000 EVERY 700. USE SCREW 667-10-12B UNLESS OTHERWISE SPECIFIED.

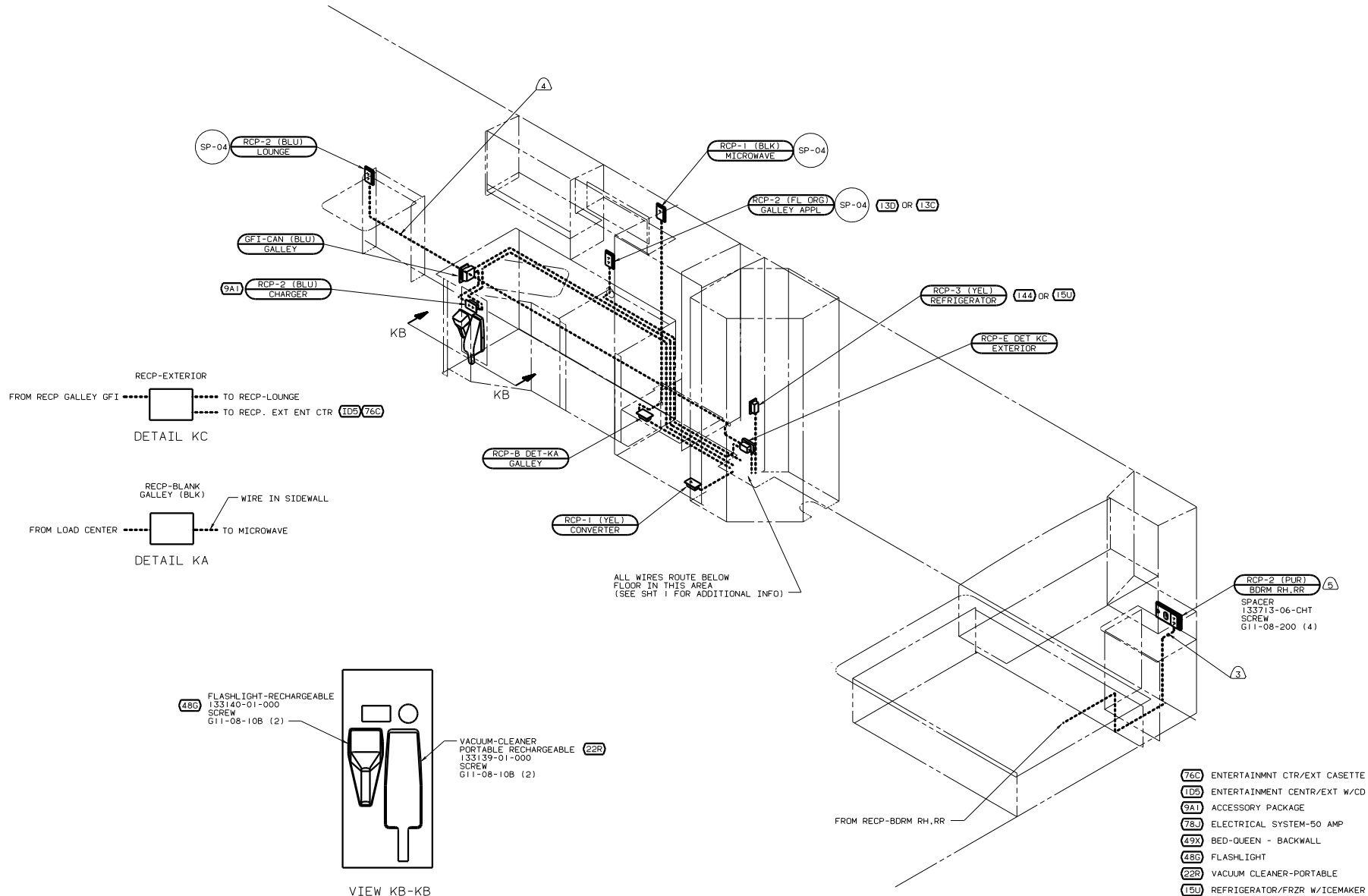
FOR ELECTRICAL TORQUE SPECIFICATIONS SEE DWG NO. 128783-01-000	51B HAIR DRYER								
FOR ELECTRICAL CALLOUTS SEE DWG NO. 121339-01-000	49X BED-QUEEN - BACKWALL								
	21M WASHER/DRYER PREP								
	12D ELECTRICAL SYSTEM 30 AMP								
	1B2 WTR HTR-10GAL/ELEC/LP/MTRAIT								
	265 CODES/STANDARDS-CSA/CMVSS								
	69L SLIDEOUT ROOM FRONT LEFT								
	00 P36G 265 12D 49X 69L								
<table border="1"> <tr> <td>TITLE</td> <td>WIRING INSTL - BODY (LH30CAN)</td> </tr> <tr> <td>NO. OF SHEETS</td> <td>8</td> </tr> <tr> <td>SHEET NO.</td> <td>8 OF 15</td> </tr> <tr> <td>DWG NO.</td> <td>133843</td> </tr> </table>		TITLE	WIRING INSTL - BODY (LH30CAN)	NO. OF SHEETS	8	SHEET NO.	8 OF 15	DWG NO.	133843
TITLE	WIRING INSTL - BODY (LH30CAN)								
NO. OF SHEETS	8								
SHEET NO.	8 OF 15								
DWG NO.	133843								



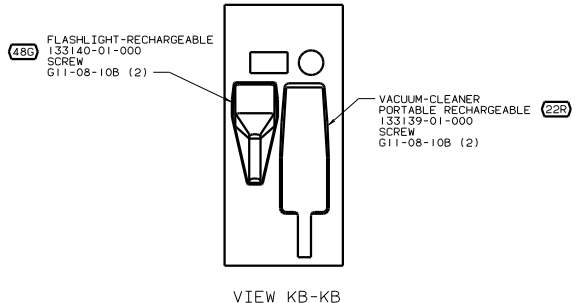
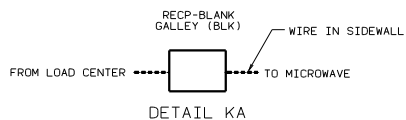
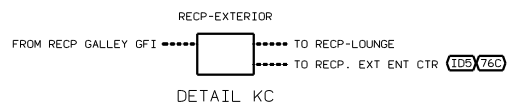
- NOTES:
1. ALL WIRE TO BE CLAMPED WITH CLAMP 10495-05-000 OR CLIP 80734-02-000 EVERY 700. USE SCREW G67-10-12B UNLESS OTHERWISE SPECIFIED.
 2. ALL WIRES ARE TO BE CLAMPED WITH CLAMP 10497-05-000 WITHIN 200 OF OUTLET BOXES AND SPLICES. USE SCREW G67-10-12B.
 3. ROUTE WIRE IN SIDEWALL DURING INSTALLATION.
 4. WIRE IN SIDEWALL.



FOR ELECTRICAL TORQUE SPECIFICATIONS SEE DWG NO. 128783-01-000	51B HAIR DRYER
FOR ELECTRICAL CALLOUTS SEE DWG NO. 121359-01-000	49X BED-QUEEN - BACKWALL
	21M WASHER/DRYER PREP
	78J ELECTRICAL SYSTEM-50 AMP
	1B2 WTR HTR-10GAL/ELEC/LP/MTR/AID
	265 CODES/STANDARDS-CSA/CMVSS
	69L SLIDEOUT ROOM FRONT LEFT
	00 P36G 265 78J 49X 69L
	WIRING INSTL - BODY (LH50CAN)
	133843



ALL WIRES ROUTE BELOW FLOOR IN THIS AREA (SEE SHIT 1 FOR ADDITIONAL INFO)



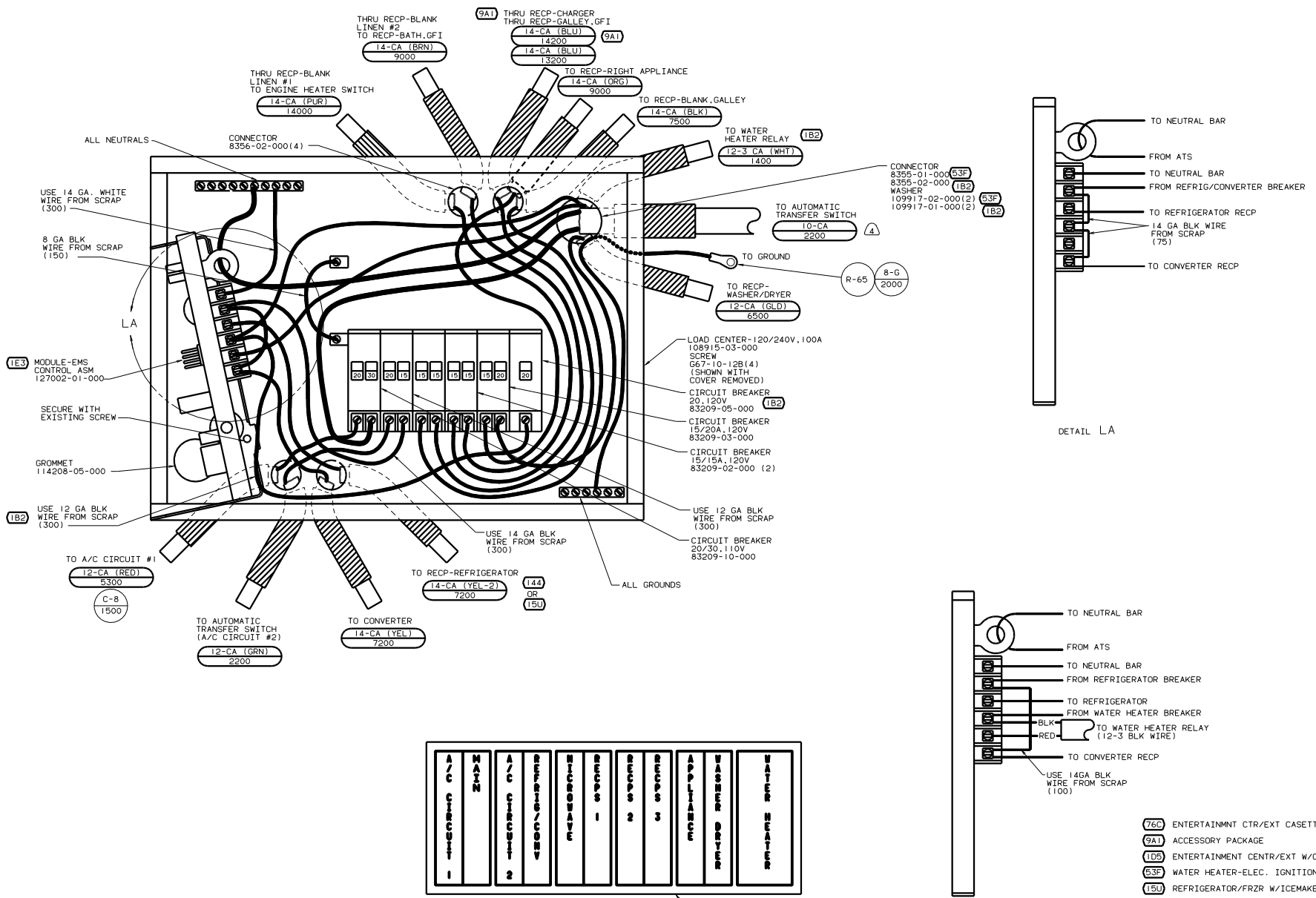
- (76C) ENTERTAINMENT CTR/EXT CASETTE
- (105) ENTERTAINMENT CTR/EXT W/CD
- (91A) ACCESSORY PACKAGE
- (78J) ELECTRICAL SYSTEM-50 AMP
- (49X) BED-QUEEN - BACKWALL
- (48C) FLASHLIGHT
- (22R) VACUUM CLEANER-PORTABLE
- (150) REFRIGERATOR/FRZR W/ICEMAKER
- (144) REFRIGERATOR-DOUBLE DOOR
- (130) MICROWAVE_OVEN WITH FAN
- (120) MICRO/CONV OVEN W/RANGE FAN
- (120) ELECTRICAL SYSTEM 30 AMP
- (265) CODES/STANDARDS-CSA/CMVSS
- (09L) SLIDEOUT ROOM FRONT LEFT

- (5) THIS CIRCUIT IS BRN ON 50AMP.
- (4) WIRE IN SIDEWALL.
- (3) ROUTE WIRE IN SIDEWALL DURING INSTALLATION.
2. ALL WIRES ARE TO BE CLAMPED WITH CLAMP 10497-05-000 WITHIN 200 OF OUTLET BOXES AND SPLICES. USE SCREW G67-10-12B.
1. ALL WIRE TO BE CLAMPED WITH CLAMP 10495-05-000 OR CLIP 80734-02-000 EVERY 700. USE SCREW G67-10-12B UNLESS OTHERWISE SPECIFIED.

FOR ELECTRICAL TORQUE SPECIFICATIONS SEE DWG NO. 128783-01-000

FOR ELECTRICAL CALLOUTS SEE DWG NO. 121339-01-000

00 P36G (265) (120) (78J) (49X) (09L)
WIRING INSTL - BODY (RH30/50US)
SHEET 10 OF 15 133843



4. WIRE MUST BE 600 LONG INSIDE BOX. ALL OTHERS TO BE 300.
3. ALL CABLES SHALL BE COVERED WITH CONDUIT-CONVOLUTE, SLIT 41953-01-000 UNLESS OTHERWISE SPECIFIED. 600 LESS THAN CABLE LENGTH.
2. ATTACH WIRES TO BACKSIDE OF LOAD CENTER. USE EXISTING HOLES AND TIE-WIRE 116673-01-000.
1. ALL GROUND WIRES TO BE COVERED WITH TUBING 8041-02-000.

INSTALL LABEL ON FRONT PANEL BELOW BREAKERS BETWEEN MOUNTING HOLES

LABEL 95721-35-000

- 760 ENTERTAINMENT CTR/EXT CASSETTE
- 9A1 ACCESSORY PACKAGE
- 105 ENTERTAINMENT CENTR/EXT W/CD
- 63F WATER HEATER-ELEC. IGNITION
- 15U REFRIGERATOR/FRZR W/ICEMAKER
- 144 REFRIGERATOR-DOUBLE DOOR
- 1B2 WTR HTR-10GAL/ELEC/LP/MTR/1RD
- 1E3 ENERGY MANAGEMENT SYSTEM
- 265 CODES/STANDARDS-CSA/CMVSS
- 120 ELECTRICAL SYSTEM 30 AMP

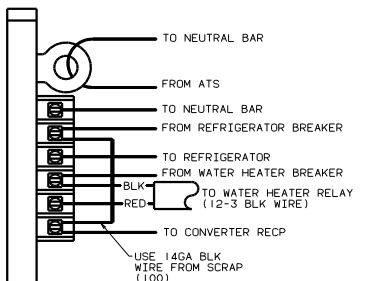
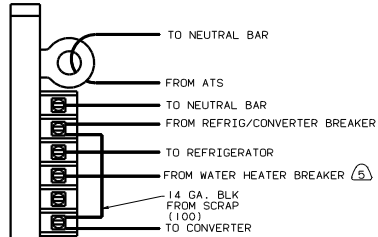
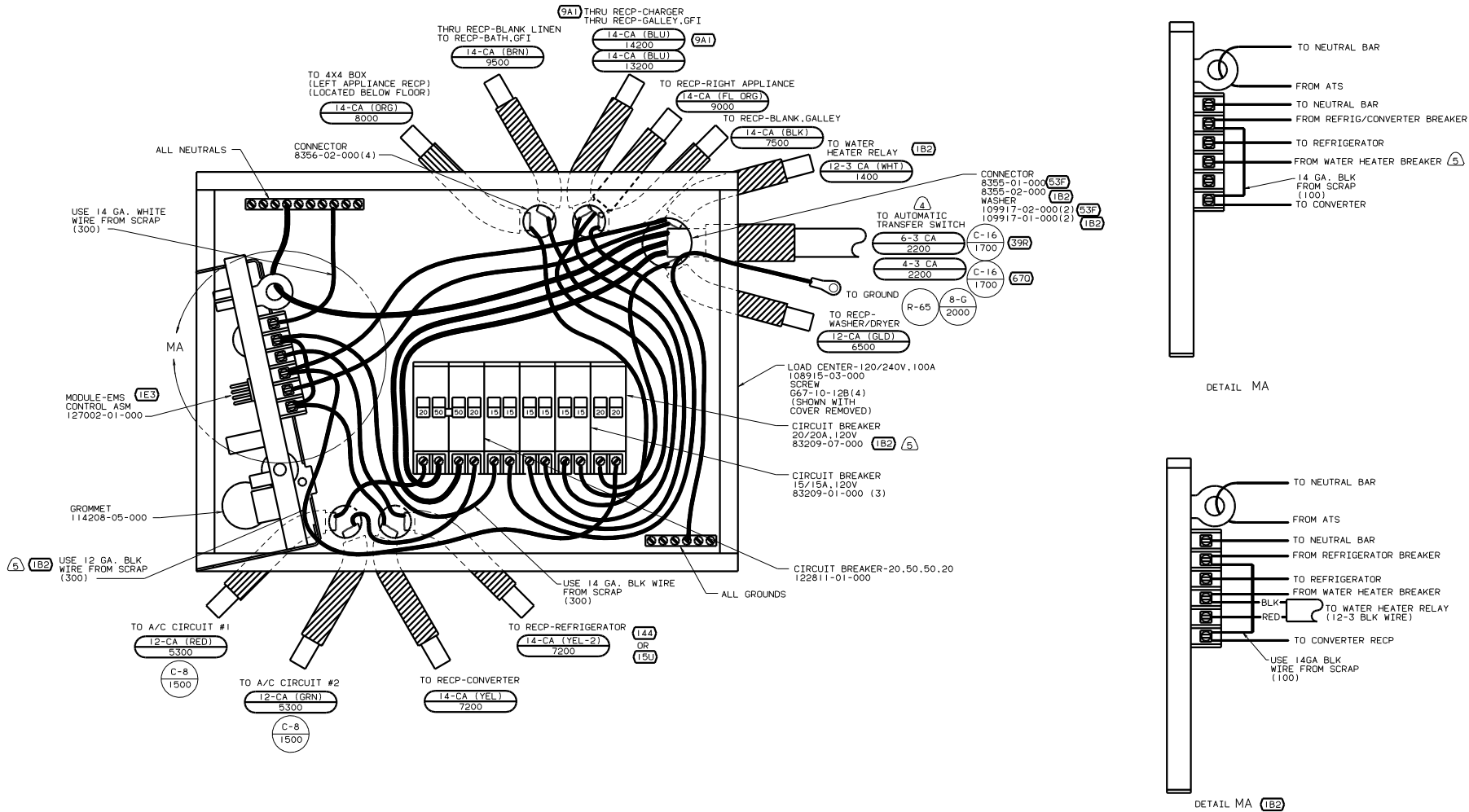
FOR ELECTRICAL TORQUE SPECIFICATIONS SEE DWG NO. 128783-01-000

FOR ELECTRICAL CALLOUTS SEE DWG NO. 121339-01-000

00 P36G 265 120 1E3

WIRING INSTL-BODY(30 LC CA)

133843



A/C CIRCUIT #1	WATER HEATER	REFRIG 1/CONV	RECP 1	RECP 2	APPLIANCE	APPLIANCE	WASHER/DRYER
A/C CIRCUIT #2	WATER HEATER	REFRIG 1/CONV	RECP 1	RECP 2	APPLIANCE	APPLIANCE	WASHER/DRYER

INSTALL LABEL ON FRONT PANEL BELOW BREAKERS BETWEEN MOUNTING HOLES

LABEL 95721-36-000

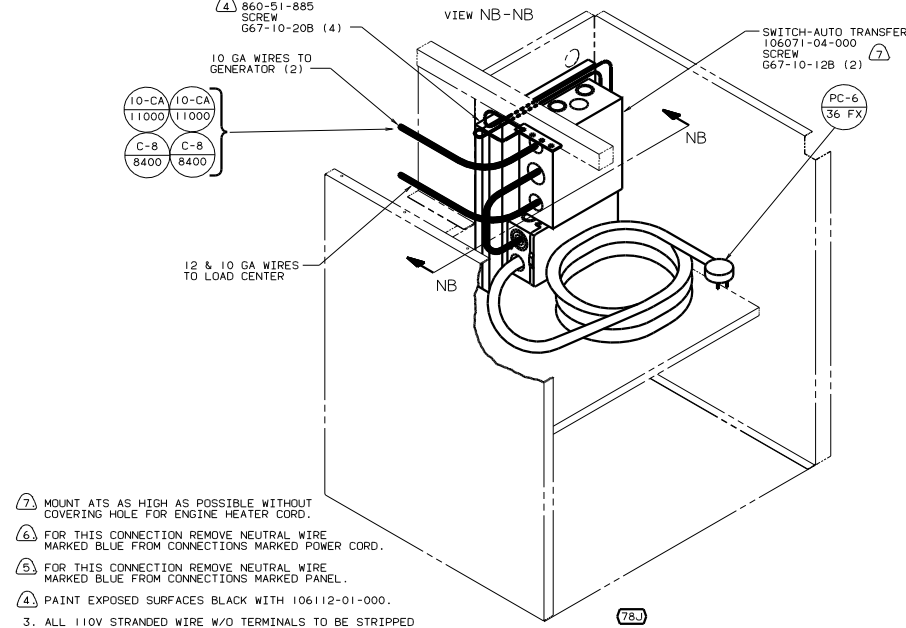
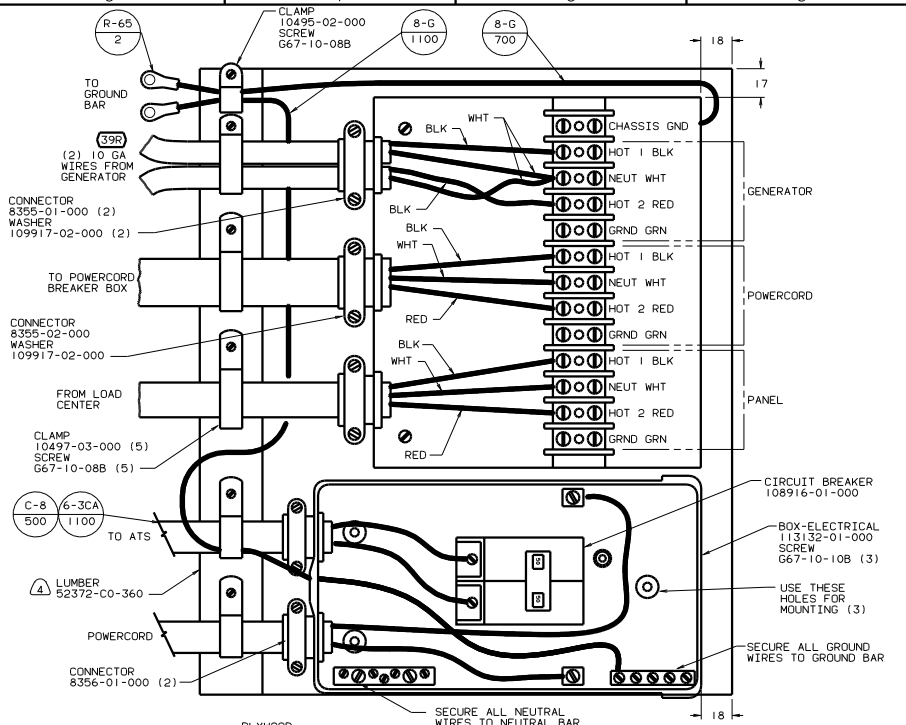
- THIS BREAKER MUST BE INSTALLED AND WIRED TO EMS EVEN WITHOUT (1B2)
- WIRE MUST BE 600 LONG INSIDE BOX, ALL OTHERS TO BE 300.
- ALL CABLES SHALL BE COVERED WITH CONDUIT-CONVOLUTED, SLIT 41953-01-000 UNLESS OTHERWISE SPECIFIED. 600 LESS THAN CABLE LENGTH.
- ATTACH WIRES TO BACKSIDE OF LOAD CENTER, USE EXISTING HOLES AND TIE-WIRE 116673-01-000.
- ALL GROUND WIRES TO BE COVERED WITH TUBING 8041-02-000.

- (76C) ENTERTAINMNT CTR/EXT CASSETTE
- (9A1) ACCESSORY PACKAGE
- (105) ENTERTAINMENT CENTR/EXT W/CD
- (53F) WATER HEATER-ELEC. IGNITION
- (670) GEN-7.5KW-ONAN-QUIET DIESEL
- (39R) GEN-6.5KW-ONAN-LP-MARQUIS
- (15U) REFRIGERATOR/FRZR W/ICEMAKER
- (144) REFRIGERATOR-DOUBLE DOOR
- (1B2) WTR HTR-10GAL/ELEC/LP/MTR/DAI
- (78J) ELECTRICAL SYSTEM - 50 AMP
- (1E3) ENERGY MANAGEMNT SYSTEM
- (2E5) CODES/STANDARDS-CSA/CMVSS

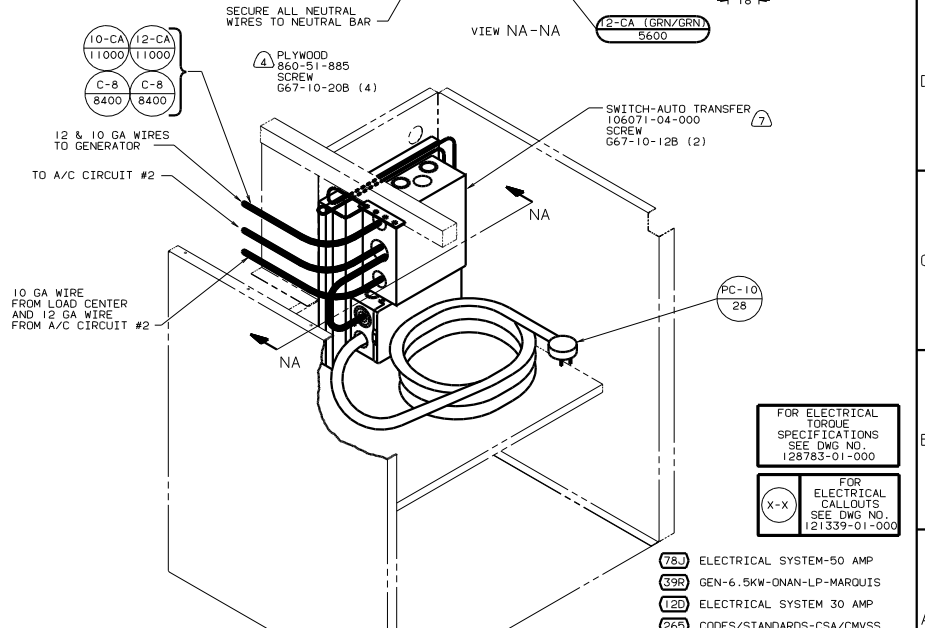
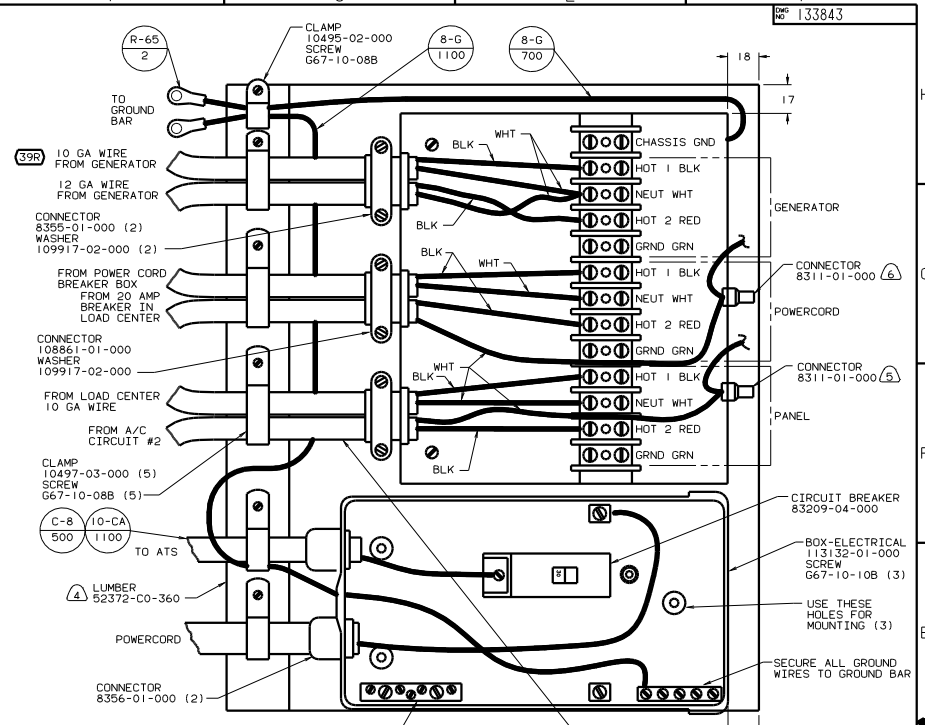
FOR ELECTRICAL TORQUE SPECIFICATIONS SEE DWG NO. 128783-01-000

FOR ELECTRICAL CALLOUTS SEE DWG NO. 121339-01-000

00 P36G (265) (1E3) (78J)
 WIRING INSTL-BODY (50 LC CA)
 SHEET 12 OF 15



- 7. MOUNT ATS AS HIGH AS POSSIBLE WITHOUT COVERING HOLE FOR ENGINE HEATER CORD.
- 6. FOR THIS CONNECTION REMOVE NEUTRAL WIRE MARKED BLUE FROM CONNECTIONS MARKED POWER CORD.
- 5. FOR THIS CONNECTION REMOVE NEUTRAL WIRE MARKED BLUE FROM CONNECTIONS MARKED PANEL.
- 4. PAINT EXPOSED SURFACES BLACK WITH 106112-01-000.
- 3. ALL 110V STRANDED WIRE W/O TERMINALS TO BE STRIPPED 10MM AND SOLDER DIPPED.
- 2. GROUND WIRES NOT SHOWN FOR CLARITY.
- 1. ALL WIRES TO BE CLAMPED WITH IN 200 OF BOX.



- 78.J ELECTRICAL SYSTEM-50 AMP
- 39R GEN-6.5KW-ONAN-LP-MARQUIS
- 12D ELECTRICAL SYSTEM 30 AMP
- 265 CODES/STANDARDS-CSA/CMVSS

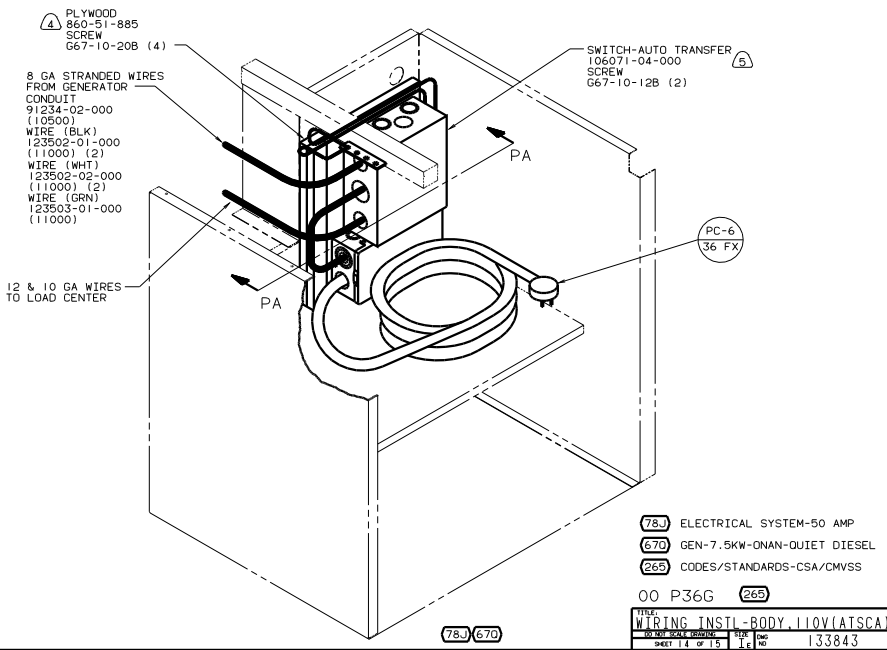
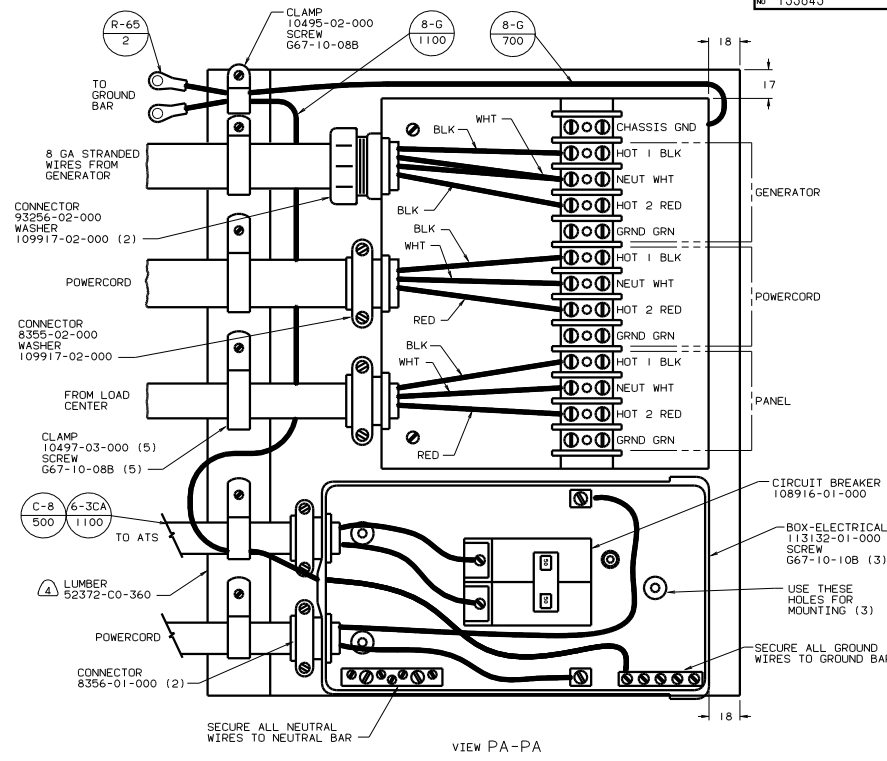
00 P36G 265 12D 39R

WIRING INSTL-RDY 110V(ATS/CA)

30 DAY SCALE DRAWING

SHEET 13 OF 15

133843



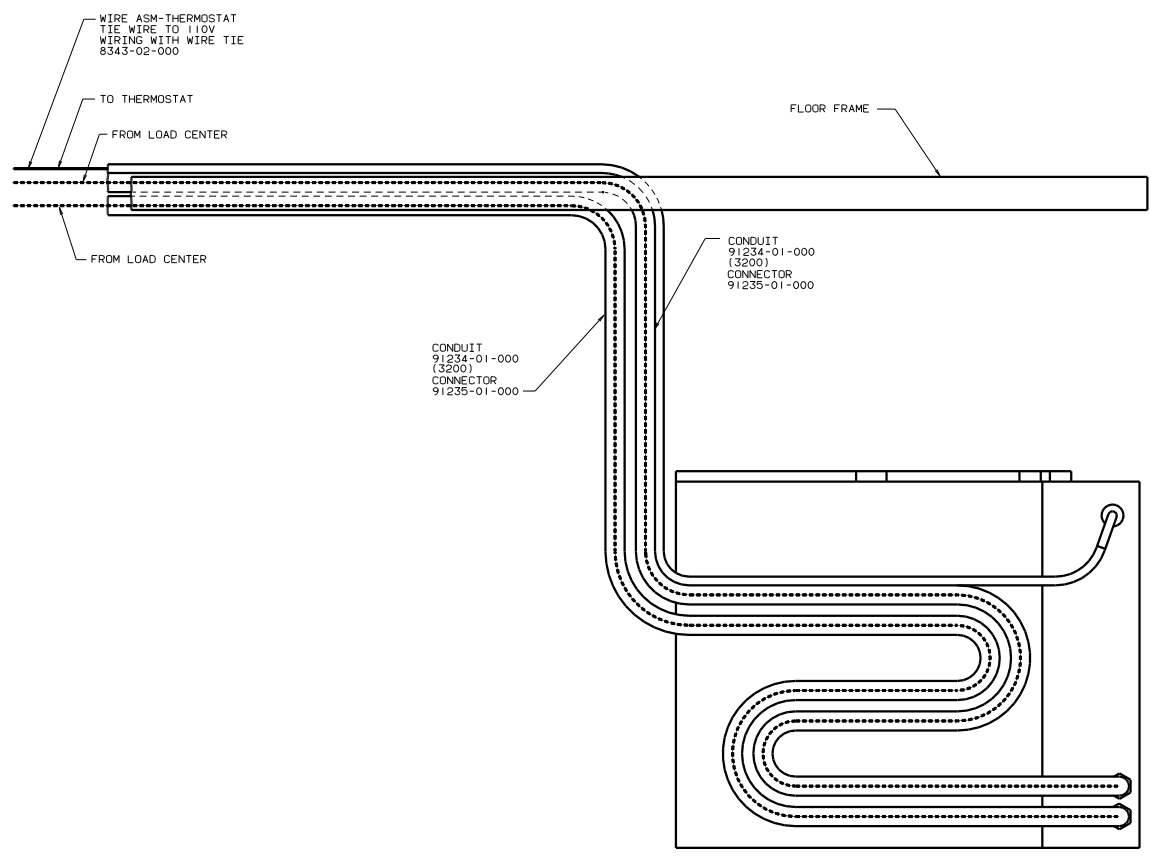
- 5 MOUNT ATS AS HIGH AS POSSIBLE WITHOUT COVERING HOLE FOR ENGINE HEATER CORD.
- 4 PAINT EXPOSED SURFACES BLACK WITH 106112-01-000.
- 3. ALL 110V STRANDED WIRE W/O TERMINALS TO BE STRIPPED 10MM AND SOLDER DIPPED.
- 2. GROUND WIRES NOT SHOWN FOR CLARITY.
- 1. ALL WIRES TO BE CLAMPED WITH IN 200 OF BOX.

FOR ELECTRICAL TORQUE SPECIFICATIONS SEE DWG NO. 128783-01-000	X-X	FOR ELECTRICAL CALLOUTS SEE DWG NO. 121339-01-000
--	-----	---

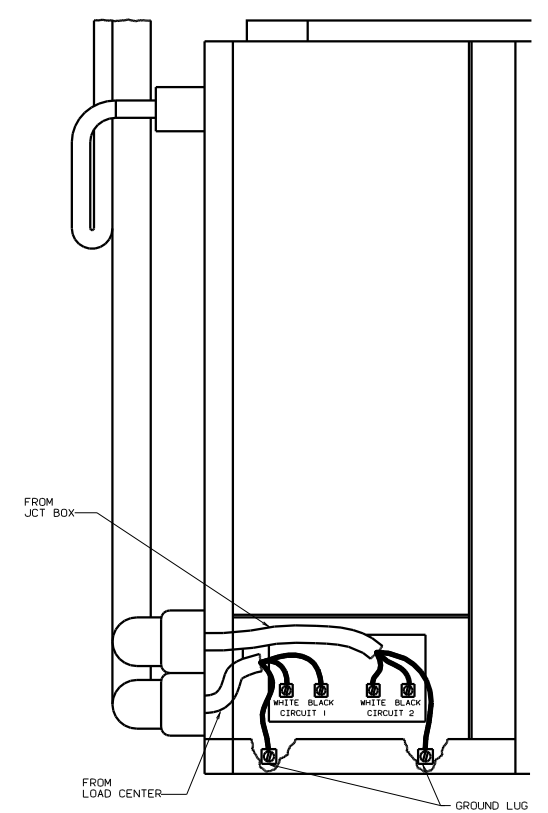
78J ELECTRICAL SYSTEM-50 AMP
670 GEN-7.5KW-QNAN-QUIET DIESEL
265 CODES/STANDARDS-CSA/CMVSS

00 P36G 265

FILED	WIRING INSTL-BODY-110V(ATS/CA)	FIG. NO.	133843
30 DAY SCALE DURING		SHEET	14 OF 15



VIEW RA-RA



FOR ELECTRICAL TORQUE SPECIFICATIONS SEE DWG NO. 128783-01-000	(X-X)	FOR ELECTRICAL CALLOUTS SEE DWG NO. 121339-01-000
--	-------	---

(265) CODES/STANDARDS-CSA/CMVSS
(1B1) CODES/STANDARDS USA

00 P36G (1B1) (265)

TITLE: WIRING INSTL-BODY(CNTRL A/C)	
NO. OF SHEETS: 15	SHEET NO: 15
DWG NO: 133843	REV NO: 1