



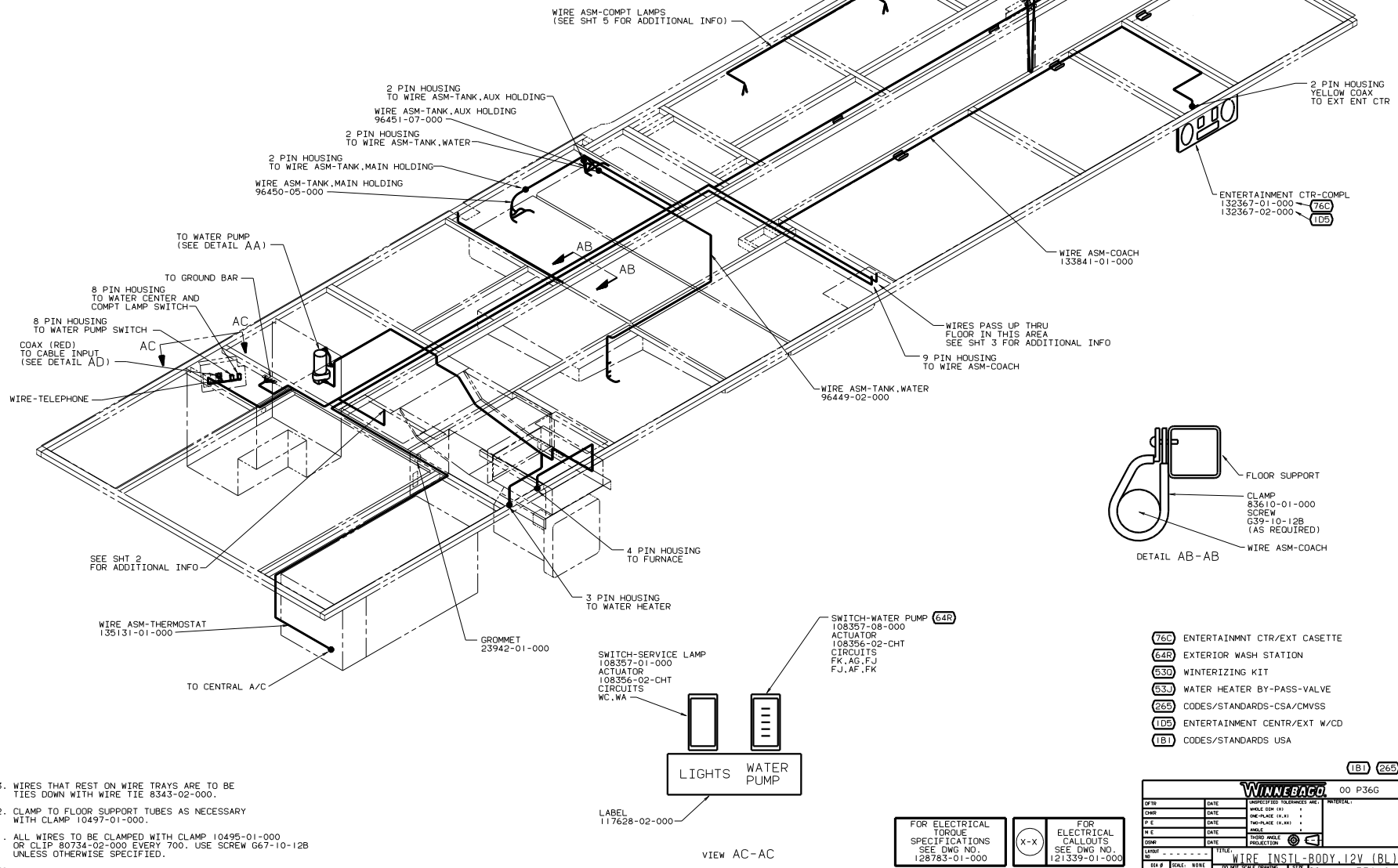
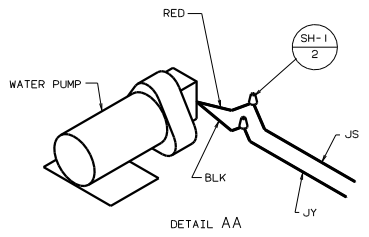
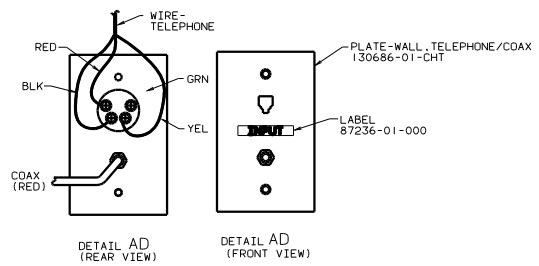
**DANGER**

**Danger of electrical shock, burns or death.** Always remove all power sources before attempting any repair, service or diagnostic work. Power can be present from shore power, generator, inverter or battery. All power sources must be disabled and secured before performing any service.



**CAUTION**

If you lack the skills, tools or equipment to perform diagnostic or repair work leave such work to an authorized Winnebago Industries dealer or other qualified shop.



- NOTES:
1. ALL WIRES TO BE CLAMPED WITH CLAMP 10495-01-000 OR CLIP 80734-02-000 EVERY 700. USE SCREW G67-10-12B UNLESS OTHERWISE SPECIFIED.
  2. CLAMP TO FLOOR SUPPORT TUBES AS NECESSARY WITH CLAMP 10497-01-000
  3. WIRES THAT REST ON WIRE TRAYS ARE TO BE TIED DOWN WITH WIRE TIE 8343-02-000.

- 76C ENTERTAINMENT CTR/EXT CASSETTE
- 64R EXTERIOR WASH STATION
- 530 WINTERIZING KIT
- 53.3 WATER HEATER BY-PASS-VALVE
- 265 CODES/STANDARDS-CSA/CMVSS
- 1D5 ENTERTAINMENT CENTER/EXT W/CD
- 1B1 CODES/STANDARDS USA

FOR ELECTRICAL TORQUE SPECIFICATIONS SEE DWG NO. 128783-01-000

FOR ELECTRICAL CALLOUTS SEE DWG NO. 121339-01-000

(X-X)

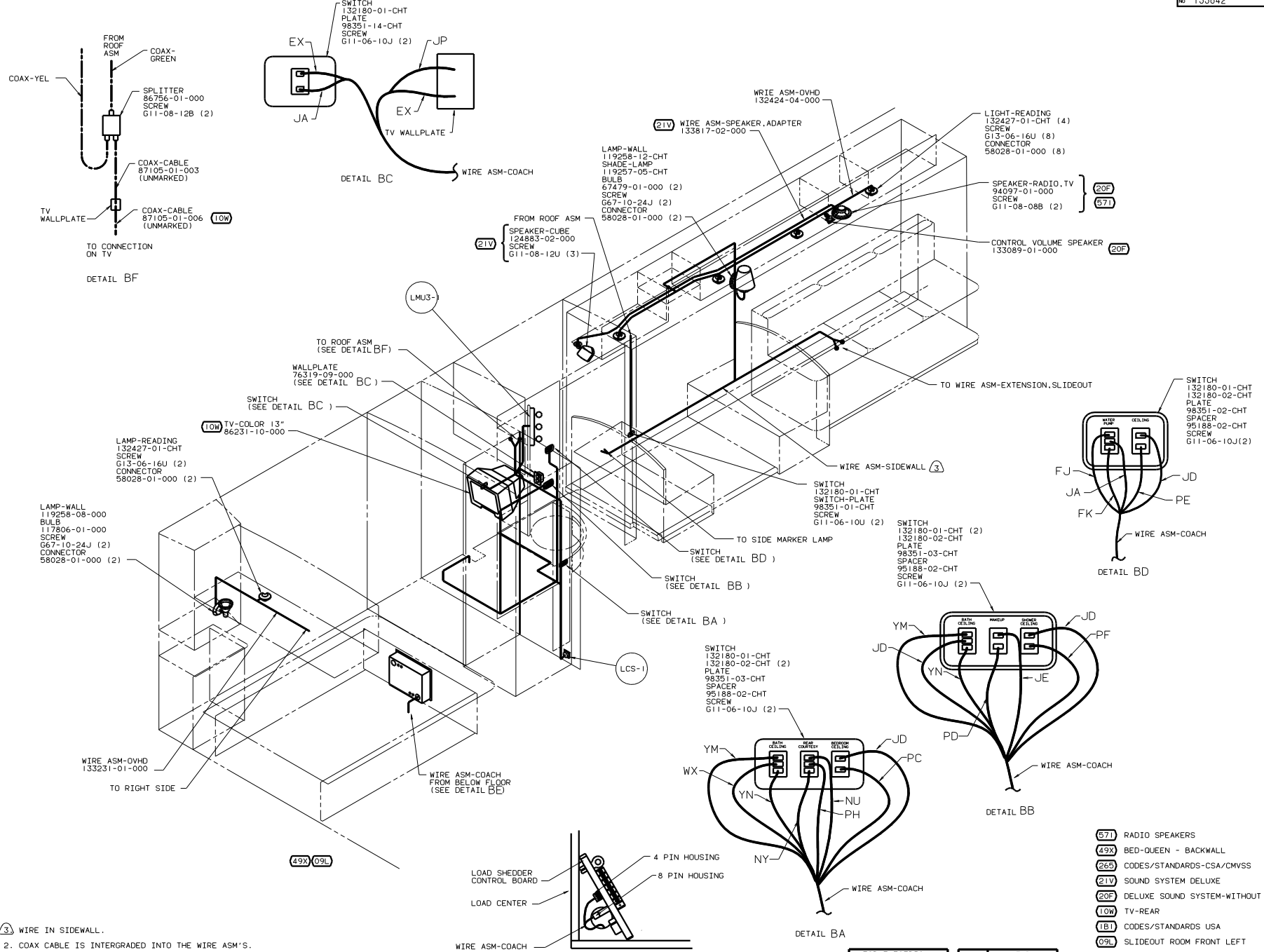
WINNEBAGO 00 P36G

DATE	UNDESIGNED TOLERANCES ARE:	MATERIAL
DATE	FR. 01	
DATE	FR. 01	
DATE	FR. 01	
DATE	FR. 01	
DATE	FR. 01	
DATE	FR. 01	
DATE	FR. 01	

TITLE: WIRE INSTL-BODY, 12V (BL)

SHEET 1 OF 6

133842



NOTES:  
 (3) WIRE IN SIDEWALL.  
 2. COAX CABLE IS INTERGRADED INTO THE WIRE ASM'S.  
 1. ALL WIRES TO BE CLAMPED WITH CLAMP 10495-01-000 OR CLIP 80734-02-000 EVERY 700. USE SCREW G67-10-12B UNLESS OTHERWISE SPECIFIED.

FOR ELECTRICAL TORQUE SPECIFICATIONS SEE DWG NO. 128783-01-000

(X-X)

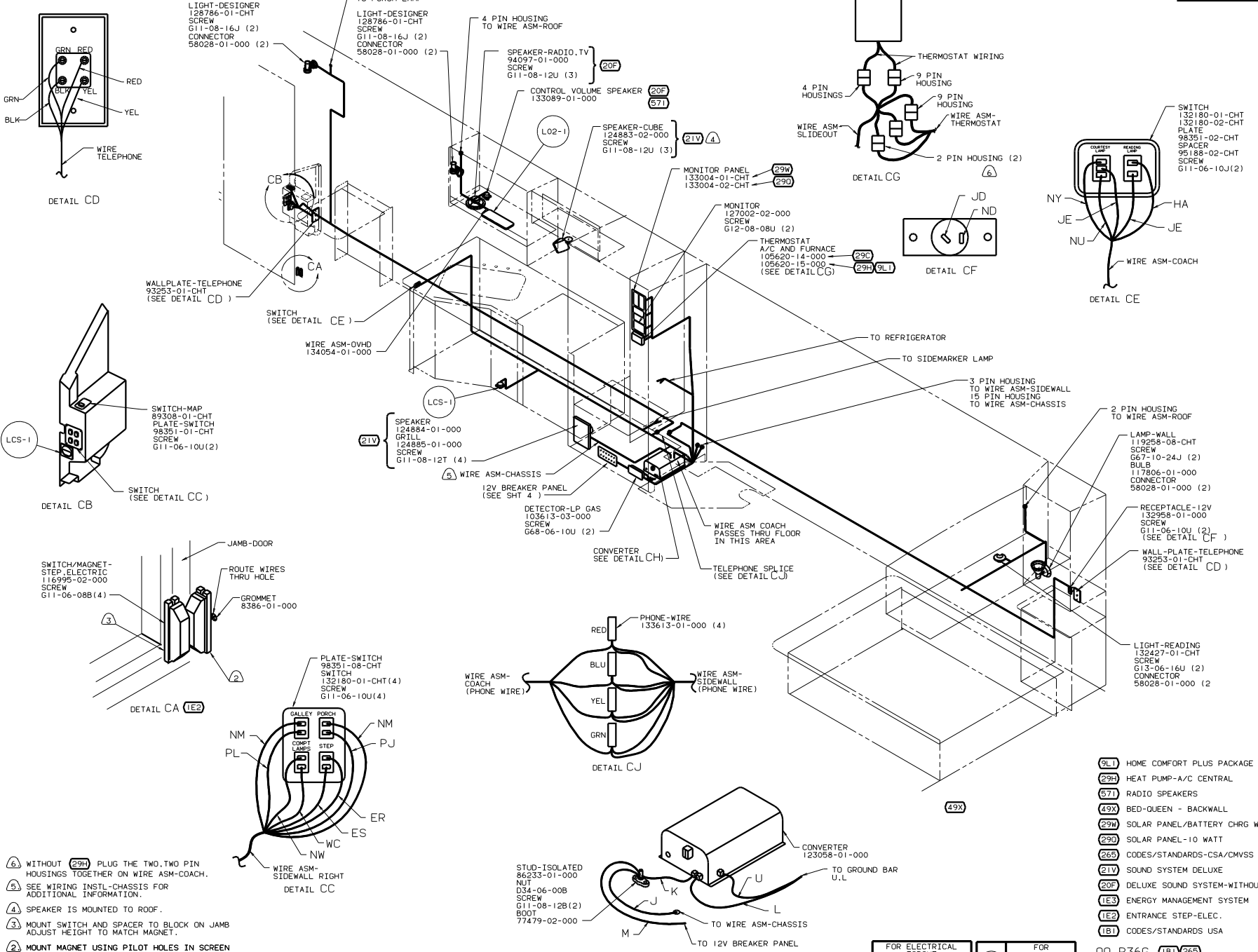
FOR ELECTRICAL CALLOUTS SEE DWG NO. 121339-01-000

- (571) RADIO SPEAKERS
- (49X) BED-QUEEN - BACKWALL
- (265) CODES/STANDARDS-CSA/CMVSS
- (12V) SOUND SYSTEM DELUXE
- (20F) DELUXE SOUND SYSTEM-WITHOUT
- (10W) TV-REAR
- (1B1) CODES/STANDARDS USA
- (09L) SLIDEOUT ROOM FRONT LEFT

00 P36G (1B1)(265)

WIRING INSTL-BODY 12V (L)

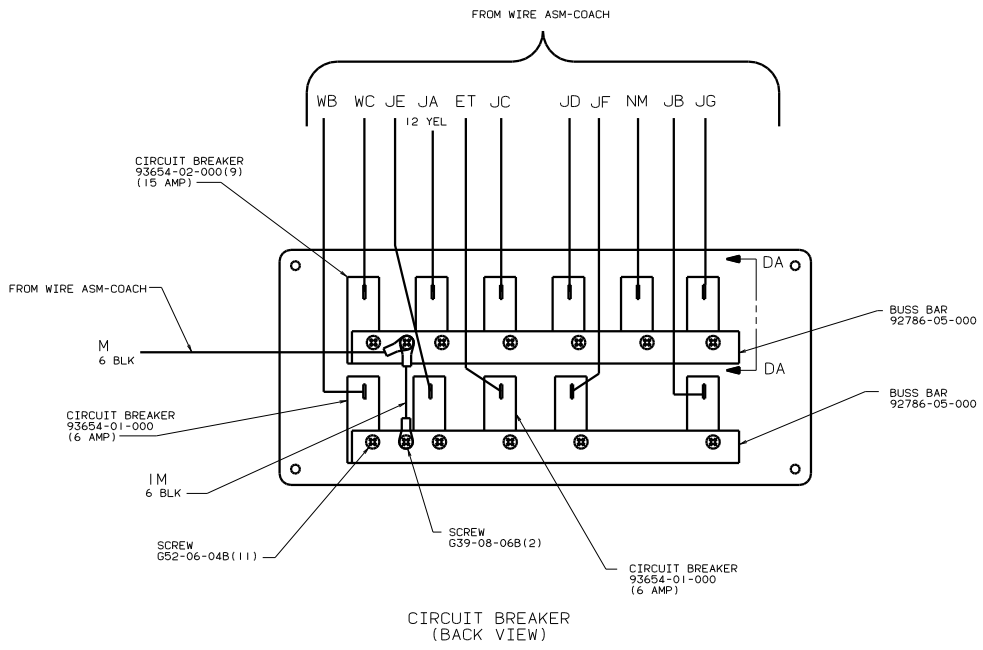
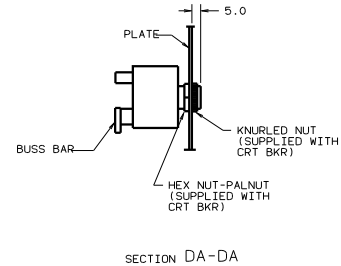
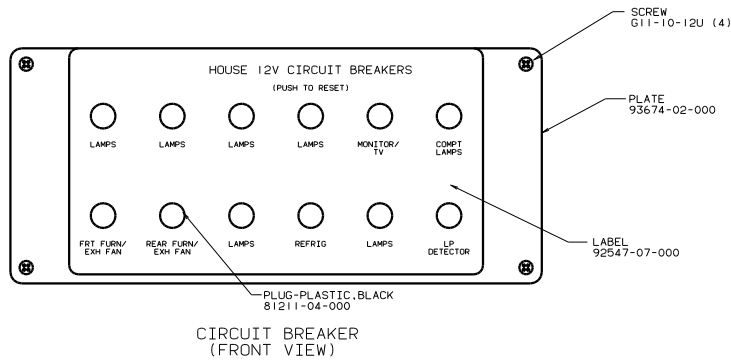
133842



- Ⓐ WITHOUT (29H) PLUG THE TWO TWO PIN HOUSINGS TOGETHER ON WIRE ASM-COACH.
- Ⓑ SEE WIRING INSTL-CHASSIS FOR ADDITIONAL INFORMATION.
- Ⓒ SPEAKER IS MOUNTED TO ROOF.
- Ⓓ MOUNT SWITCH AND SPACER TO BLOCK ON JAMB ADJUST HEIGHT TO MATCH MAGNET.
- Ⓔ MOUNT MAGNET USING PILOT HOLES IN SCREEN DOOR FRAME. MOUNT WITH MAGNET TOWARD SWITCH
- Ⓕ WIRE ROUTED IN SIDEWALL.

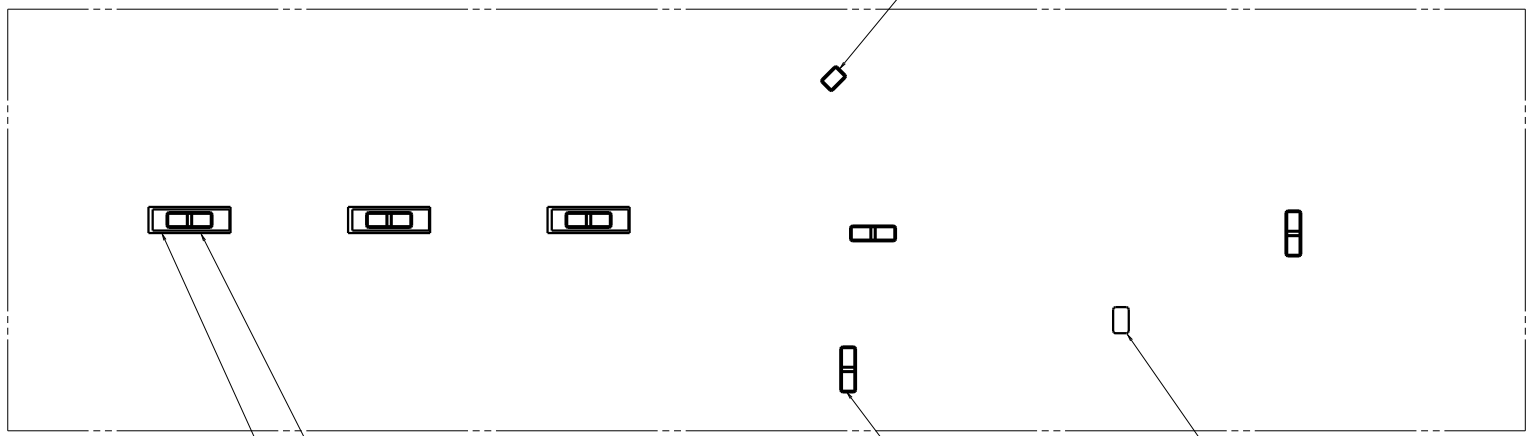
- 9L1 HOME COMFORT PLUS PACKAGE
- 29H HEAT PUMP-A/C CENTRAL
- 57I RADIO SPEAKERS
- 49X BED-QUEEN - BACKWALL
- 29W SOLAR PANEL/BATTERY CHR9 W/O
- 29D SOLAR PANEL-10 WATT
- 26S CODES/STANDARDS-CSA/CMVSS
- 21V SOUND SYSTEM DELUXE
- 20F DELUXE SOUND SYSTEM-WITHOUT
- 1E3 ENERGY MANAGEMENT SYSTEM
- 1E2 ENTRANCE STEP-ELEC.
- 1B1 CODES/STANDARDS USA

FOR ELECTRICAL TORQUE SPECIFICATIONS SEE DWG NO. 128783-01-000	X-X	FOR ELECTRICAL CALLOUTS SEE DWG NO. 121339-01-000
--	-----	---



FOR ELECTRICAL TORQUE SPECIFICATIONS SEE DWG NO. 128783-01-000

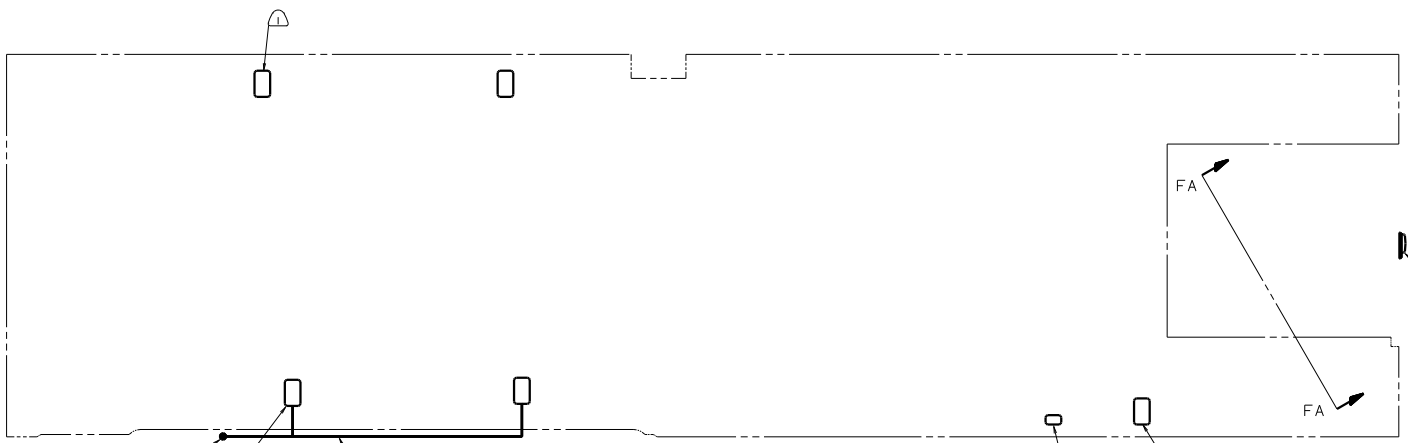
FOR ELECTRICAL CALLOUTS SEE DWG NO. 121339-01-000



48V FLUN2 3 LF2N1 3 48M

LF2N1 3

LF1-1



LF1-1

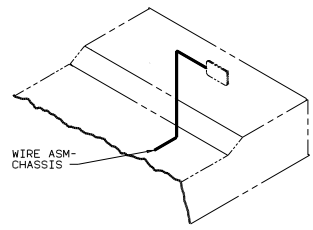
TO WIRE ASM-EXTENSION SLIDEOUT

LF1-1 4

WIRE ASM-COMPT LAMPS 125266-09-000

LAMP 86280-01-000  
SCREW 667-10-12U (2)  
CONNECTOR 58028-01-000 (2)

LF1N1



VIEW FA-FA

- (48V) LIGHTS-FLUORESCENT
- (48M) LIGHTS-INCANDESCENT
- (265) CODES/STANDARDS-CSA/CWVSS
- (1B1) CODES/STANDARDS USA

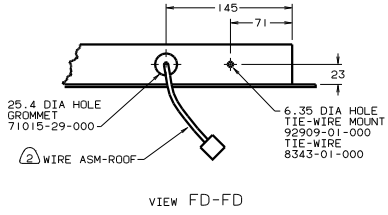
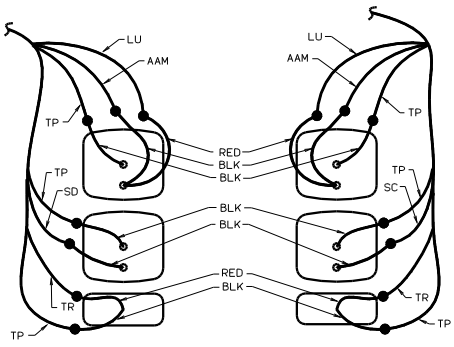
(1B1) (265) (48M) 00 P36G

FOR ELECTRICAL TORQUE SPECIFICATIONS SEE DWG NO. 128783-01-000

FOR ELECTRICAL CALLOUTS SEE DWG NO. 121339-01-000

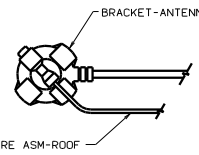
TITLE		DRAWING NO.	
WIRING INSTL-BODY, 12V(LAMPS)		133842	
NO. OF SHEETS	TOTAL SHEETS	SHEET NO.	TITLE
5	6	5	133842

NOTES:  
LAMPS TO BE MOUNTED WITH SWITCH OUTBOARD AND 75 ±20 FROM EDGE OF FLOOR.



VIEW FE-FE

VIEW FD-FD



VIEW FC-FC

- (181) LAMP-PORCH 97917-01-CHT SCREW
- (265) LAMP-PORCH 8089-02-000 SCREW
- (265) G67-10-12U(EXT) (4)
- (265) G67-06-10U(EXT) (2)
- (265) CONNECTOR 58028-01-000(2)
- (265) SEAL

- LAMP-MARKER, LENS, RED 133055-01-000 (5)
- LAMP-MARKER, BASE, WHITE 133055-03-000 (5)
- BULB 36196-01-000 (5)

- WIRE ASM-BACKWALL, FL 132673-02-000

- LIGHT ASM-STOP/TURN/TAIL, RED 133054-03-000 (2)
- SCREW G11-08-12U (EXT) (4)

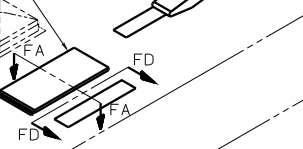
- LIGHT ASM-TURN/AMBER 133054-04-000 (2)
- SCREW G11-08-12U (EXT) (4)

- LAMP ASM-BACKUP 106688-01-000 (2)
- BULB 37934-01-000 (2)
- SCREW G39-08-16U (EXT) (4)

- LAMP-LICENSE 87201-01-000
- SCREW G11-06-12U (EXT) (2)

- LAMP-BRAKE, CENTER 121950-01-000
- SCREW (SUPPLIED W/LAMP)

- (5) TO TRAILER PLUG
- (5) CONNECTOR-PLUG, TRAILER (113589-01-000) TO BE SUPPLIED IN COACH WITH (240)
- (4) TAPE BRANCH BACK ALONG WIRE ASM WITH TAPE 8363-01-000.
- (3) INSTALL WITH WIRES TOWARD ROOF.
- (2) FASTEN TO VENT.
- (1) WRAP BRACKET LEGS AROUND ANTENNA BASE.



- (290) PANEL-SOLAR 10 WATT 115804-01-000
- SCREW G11-08-16U(4)
- (SEE DETAIL FA)

- (193) ANT-2

- (480) DM-1

- WIRE ASM-CLEARANCE LAMPS 126486-03-000

- 2 PIN HOUSING TO WIRE ASM-TP, MAIN

- LAMP-MARKER, LENS, AMBER 133055-02-000 (5)
- LAMP-MARKER, BASE, WHITE 133055-03-000 (5)
- BULB 36196-01-000 (5)

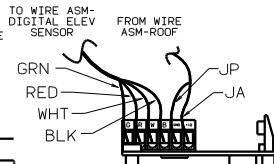
- LAMP-MARKER, BASE, WHITE 111102-01-000(2)
- LAMP-MARKER, LENS, AMBER 111102-02-000(2)
- SCREW G11-08-12U (EXT) (4)

- LAMP 97917-01-CHT (181)
- SCREW G67-10-12U (EXT) (4) (181)
- LAMP 8089-02-000 (265)
- SCREW G67-06-10T (EXT) (2) (265)
- CONNECTOR 58028-01-000 (2)
- SEAL

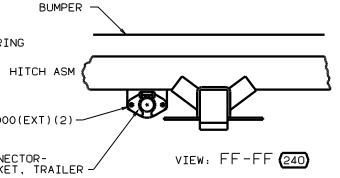
- LAMP-MARKER, BASE, WHITE 111102-01-000(2)
- LAMP-MARKER, LENS, AMBER 111102-02-000(2)
- SCREW G11-08-12U (EXT) (4)

- ANTENNA-RADIO 90944-01-000
- EXTENDER-SHAFT, ANTENNA 109889-04-000
- BRACKET-ANTENNA GROUND 108847-01-000
- SEAL
- CABLE EXT 77069-02-000(3)

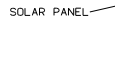
- (76C)
- (1D5)



DETAIL FB (480)



VIEW: FF-FF (240)



REFRIGERATOR VENT

VIEW FA-FA

- (240) TRAILER HITCH
- (1D5) ENTERTAINMENT CENTR/EXT W/CD
- (76C) ENTERTAINMENT CTR/EXT CASSETTE
- (290) SOLAR PANEL-10 WATT
- (265) CODES/STANDARDS-CSA/CMVSS
- (181) CODES/STANDARDS USA

FOR ELECTRICAL TORQUE SPECIFICATIONS SEE DWG NO. 128783-01-000

FOR ELECTRICAL CALLOUTS SEE DWG NO. 121339-01-000

WIRING INSTL-BODY, 12V (EXT) 133842