



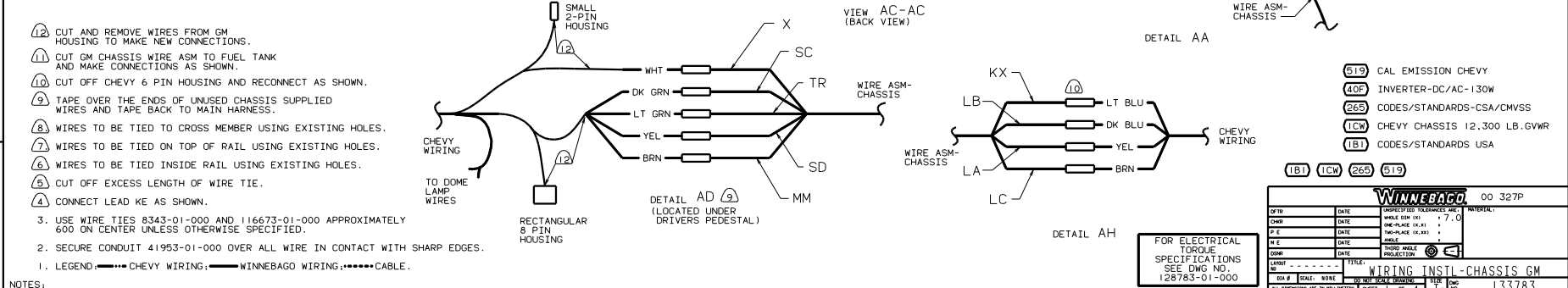
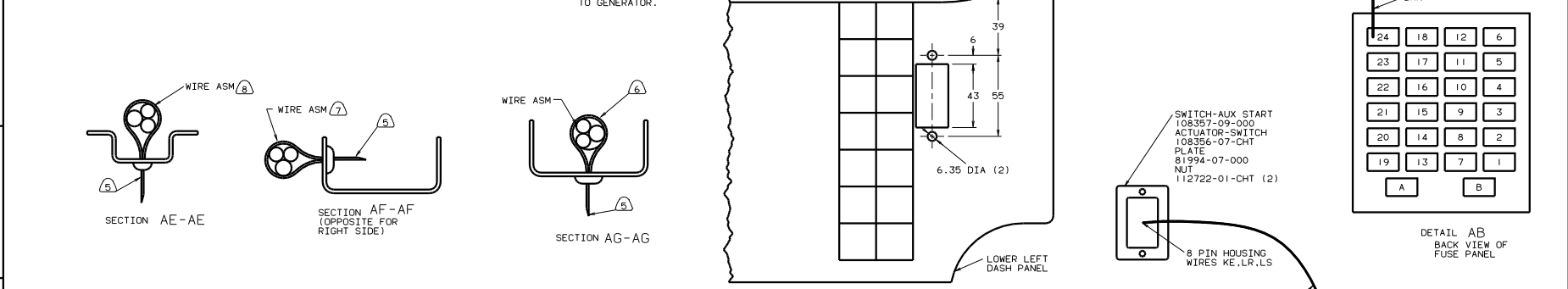
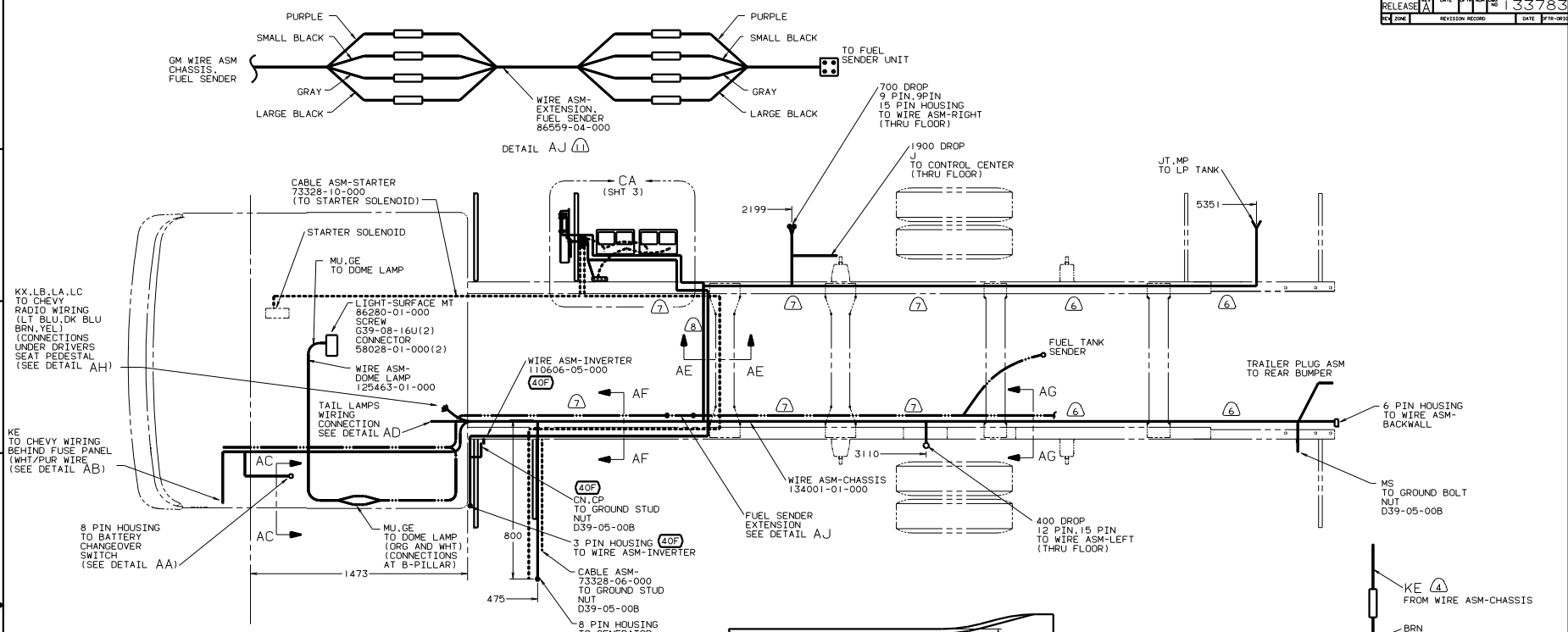
**DANGER**

**Danger of electrical shock, burns or death.** Always remove all power sources before attempting any repair, service or diagnostic work. Power can be present from shore power, generator, inverter or battery. All power sources must be disabled and secured before performing any service.



**CAUTION**

If you lack the skills, tools or equipment to perform diagnostic or repair work leave such work to an authorized Winnebago Industries dealer or other qualified shop.



1. LEGEND: CHEVY WIRING; WINNEBAGO WIRING; CABLE.
2. SECURE CONDUIT 41953-01-000 OVER ALL WIRE IN CONTACT WITH SHARP EDGES.
3. USE WIRE TIES 8343-01-000 AND 116673-01-000 APPROXIMATELY 600 ON CENTER UNLESS OTHERWISE SPECIFIED.
- NOTES:
- CUT AND REMOVE WIRES FROM GM HOUSING TO MAKE NEW CONNECTIONS.
  - CUT GM CHASSIS WIRE ASM TO FUEL TANK AND MAKE CONNECTIONS AS SHOWN.
  - CUT OFF CHEVY 6 PIN HOUSING AND RECONNECT AS SHOWN.
  - TAPE OVER THE ENDS OF UNUSED CHASSIS SUPPLIED WIRES AND TAPE BACK TO MAIN HARNESS.
  - WIRES TO BE TIED TO CROSS MEMBER USING EXISTING HOLES.
  - WIRES TO BE TIED ON TOP OF RAIL USING EXISTING HOLES.
  - WIRES TO BE TIED INSIDE RAIL USING EXISTING HOLES.
  - CUT OFF EXCESS LENGTH OF WIRE TIE.
  - CONNECT LEAD KE AS SHOWN.

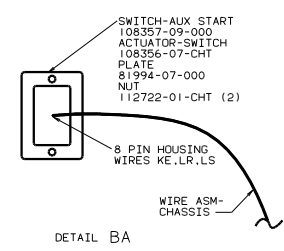
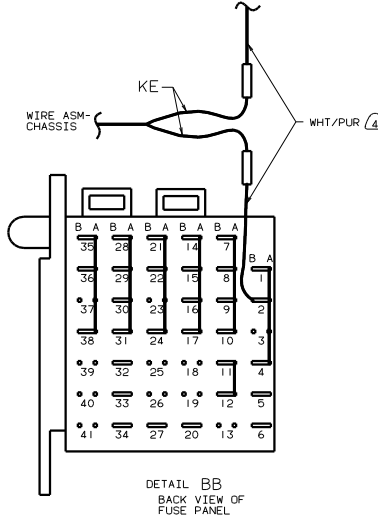
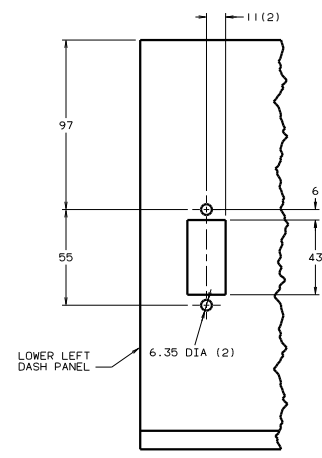
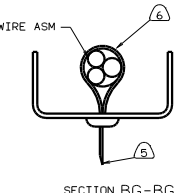
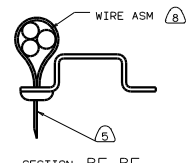
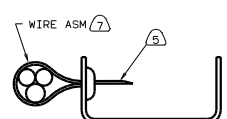
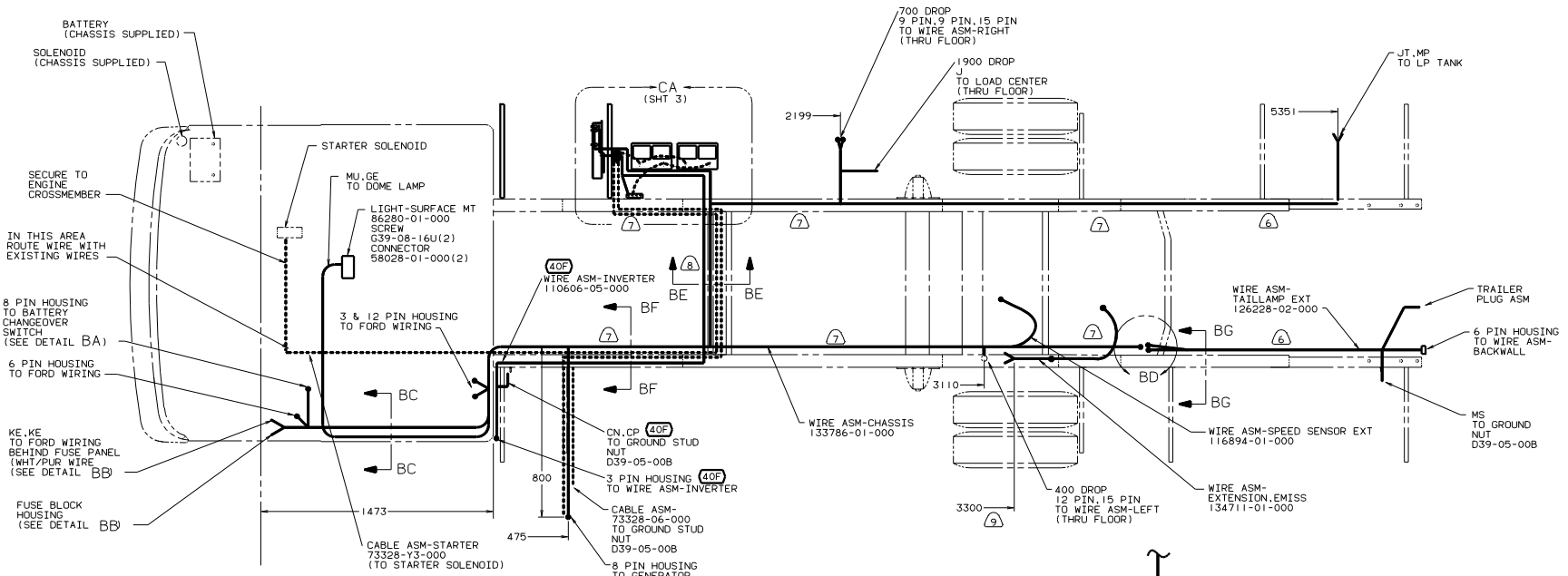
FOR ELECTRICAL TORQUE SPECIFICATIONS SEE DWG NO. 128783-01-000

DATE	DATE	UNAPPROVED TOLERANCES ARE MATERIAL
DATE	DATE	ONE-PLACE (19.81)
DATE	DATE	TWO-PLACE (19.81)
DATE	DATE	THREE-PLACE (19.81)
DATE	DATE	THREE-PLACE (19.81)
DATE	DATE	THREE-PLACE (19.81)
DATE	DATE	THREE-PLACE (19.81)
DATE	DATE	THREE-PLACE (19.81)

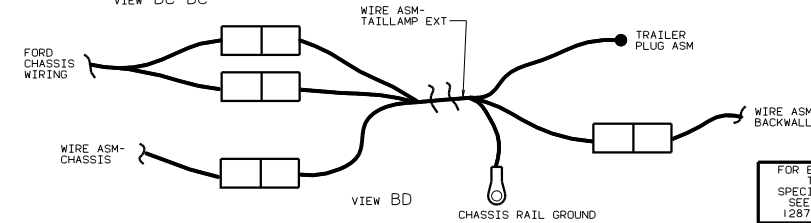
WINNEBAGO 00 327P

WIRING INSTL-CHASSIS GM

133783



9. SPLIT AND EXTEND THE FORD WIRE ASM- TO THE EMISSION SENSOR IN THE FUEL TANK.
8. WIRES TO BE TIED TO CROSS MEMBER USING EXISTING HOLES.
7. WIRES TO BE TIED ON TOP OF RAIL USING EXISTING HOLES.
6. WIRES TO BE TIED INSIDE RAIL USING EXISTING HOLES.
5. CUT OF EXCESS END OF WIRE TIE.
4. CUT WIRE AND RECONNECT AS SHOWN.
3. USE WIRE TIES 8343-01-000 AND 116673-01-000 APPROXIMATELY 600MM ON CENTER UNLESS OTHERWISE SPECIFIED.
2. SECURE CONDUIT 41953-01-000 OVER ALL WIRE IN CONTACT WITH SHARP EDGES.
1. LEGEND: — FORD WIRING — WINNEBAGO WIRING ..... CABLE.

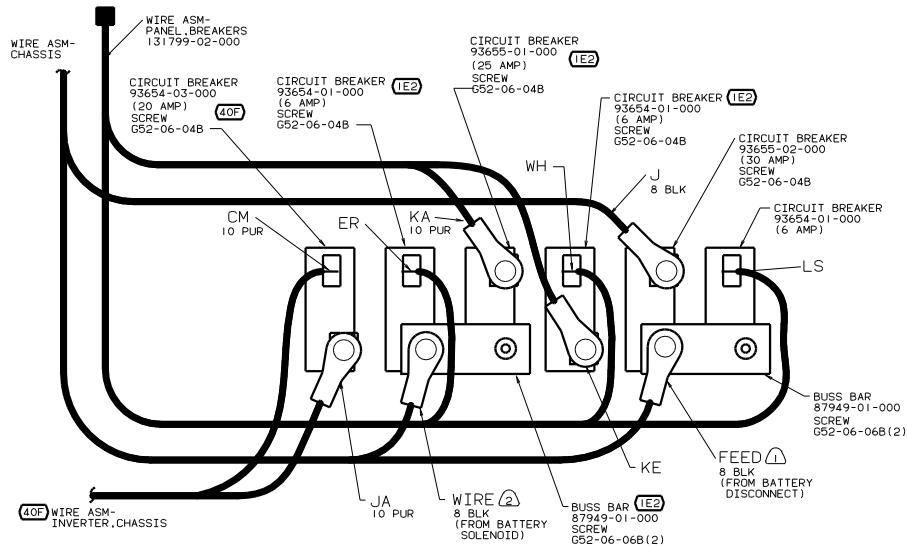
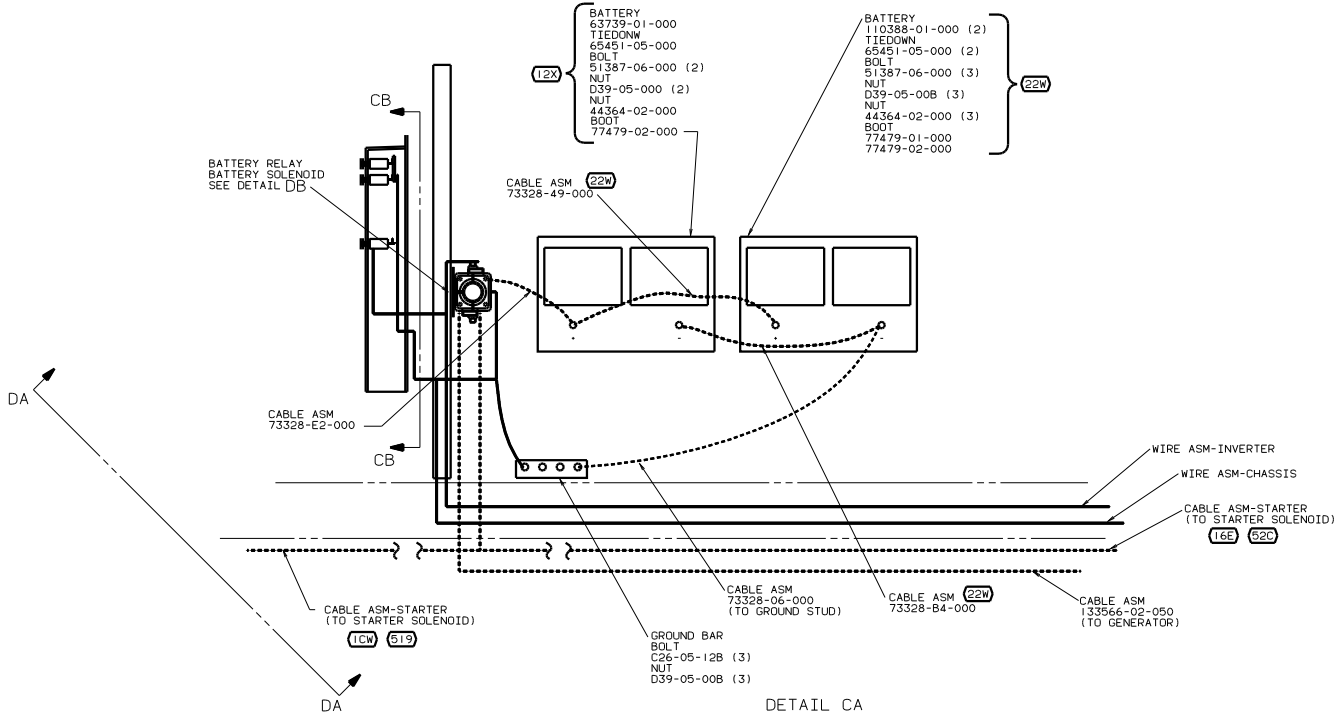


FOR ELECTRICAL TORQUE SPECIFICATIONS SEE DWG NO. 128783-01-000

520	FORD CHASSIS DIESEL
40P	INVERTER-DC/AC-130W
265	CODES/STANDARDS-CSA/CMVSS
16E	FORD CHASSIS 14.050 LB. GVWR
1B1	CODES/STANDARDS USA
00 327P	1B1 16E 265 520

WIRING INSTL-CHASSIS (FORD)

133783



VIEW CB-CB

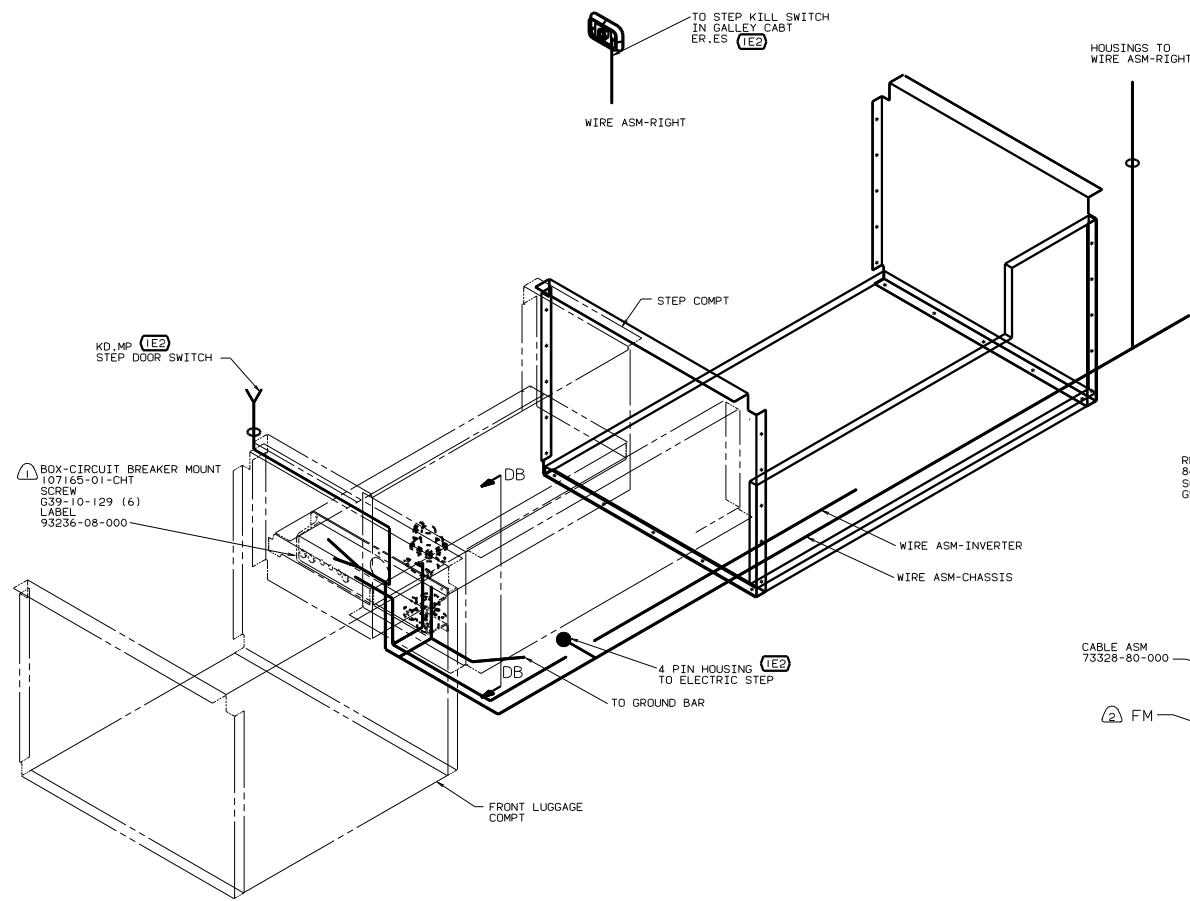
- (52C) FORD CHASSIS DIESEL
- (519) CAL EMISSION CHEVY
- (40F) INVERTER-DC/AC-130W
- (265) CODES/STANDARDS-CSA/CMVSS
- (22W) BATTERY-TWO
- (16E) FORD CHASSIS 14,050 LB.GVWR
- (12X) BATTERY-ONE
- (1E2) ENTRANCE STEP-ELEC.
- (1CW) CHEVY CHASSIS 12,300 LB.GVWR
- (1B1) CODES/STANDARDS USA

NOTES:  
 (2) LEAD IS MARKED WITH YELLOW TAPE FOR IDENTIFICATION.  
 (1) LEAD IS MARKED WITH RED TAPE FOR IDENTIFICATION.

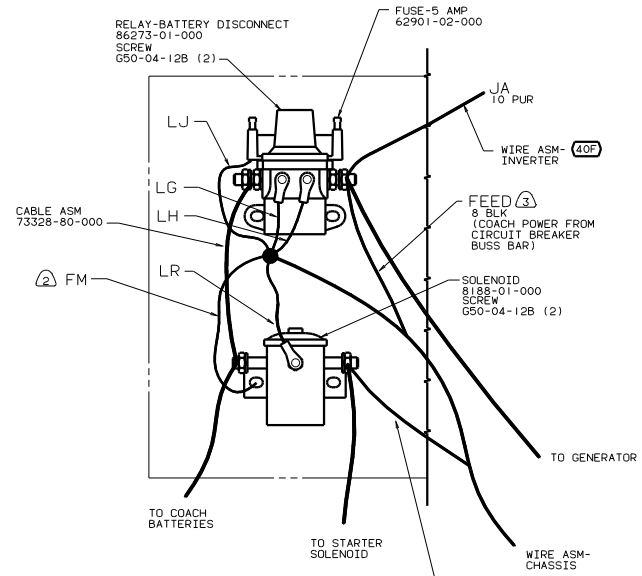
FOR ELECTRICAL TORQUE SPECIFICATIONS SEE DWG NO. 128783-01-000

00 327P (1B1) (265)

FILE: WIRING INSTL-CHASSIS (BATT)	
NO. 30781 5444 02/01/00	REV. 1.0
SHEET 3 OF 4	DWG NO. 133783



VIEW DA-DA



VIEW DB-DB

- ④ LEAD IS MARKED WITH YELLOW TAPE FOR IDENTIFICATION.
- ③ LEAD IS MARKED WITH RED TAPE FOR IDENTIFICATION.
- ② SECURE WITH SOLENOID MOUNTING BOLT.
- ① LOCATED BOX HORIZONTALLY BY CENTERING ON HOLE IN COMPT.

NOTES:

FOR ELECTRICAL TORQUE SPECIFICATIONS SEE DWG NO. 128783-01-000

- ⑤2D FORD CHASSIS DIESEL
- ⑤19 CAL EMISSION CHEVY
- ④0F INVERTER-DC/AC-130W
- ②6B CODES/STANDARDS-CSA/CMVSS
- ①6E FORD CHASSIS 14,050 LB. GVWR
- ①E2 ENTRANCE STEP-ELEC.
- ①CW CHEVY CHASSIS 12,300 LB. GVWR
- ①B1 CODES/STANDARDS USA

00 327P (1B1) (16E) (519)  
 TITLE: WIRING INSTL-CHASSIS SOL  
 SHEET 4 OF 4