



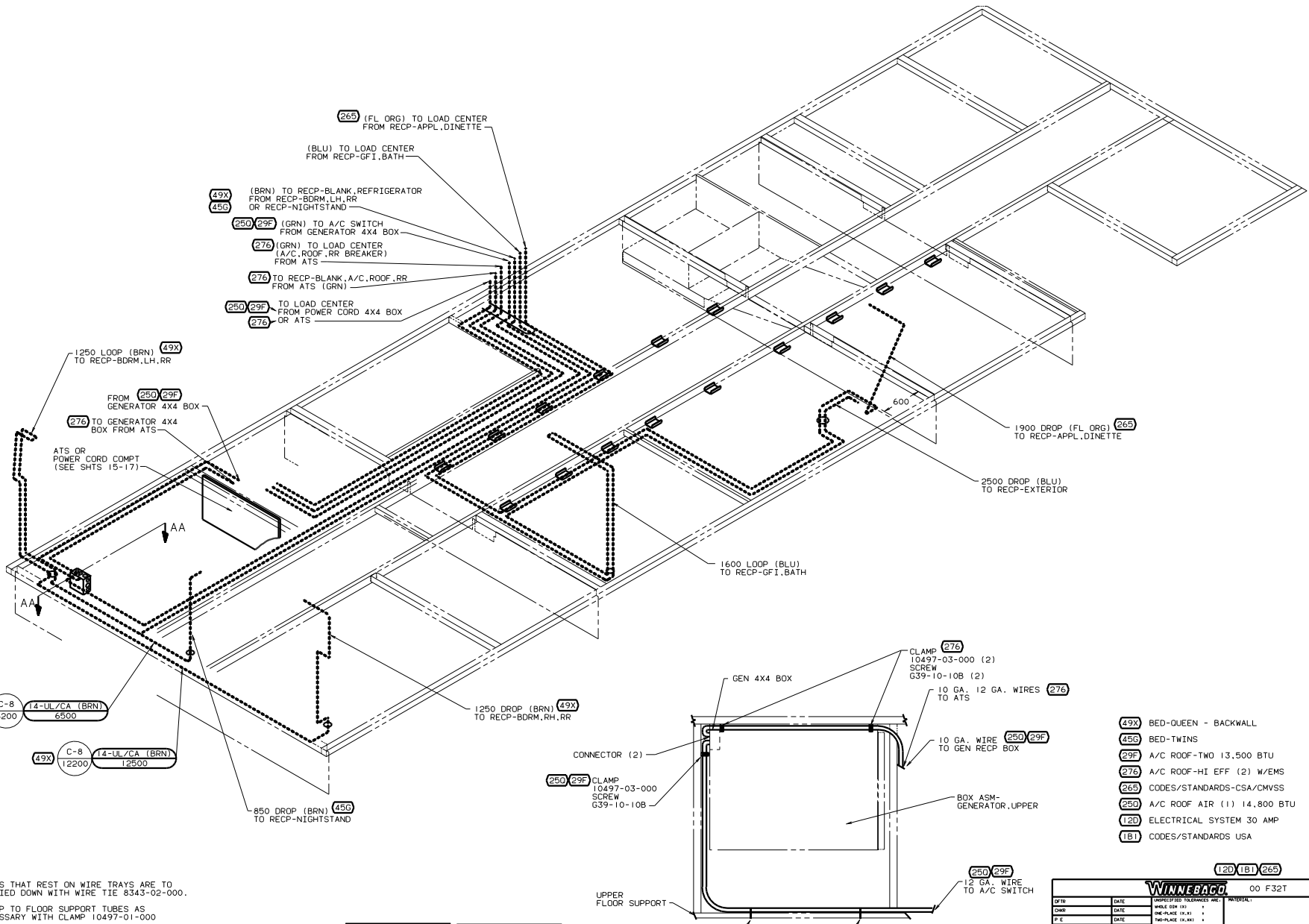
DANGER

Danger of electrical shock, burns or death. Always remove all power sources before attempting any repair, service or diagnostic work. Power can be present from shore power, generator, inverter or battery. All power sources must be disabled and secured before performing any service.



CAUTION

If you lack the skills, tools or equipment to perform diagnostic or repair work leave such work to an authorized Winnebago Industries dealer or other qualified shop.



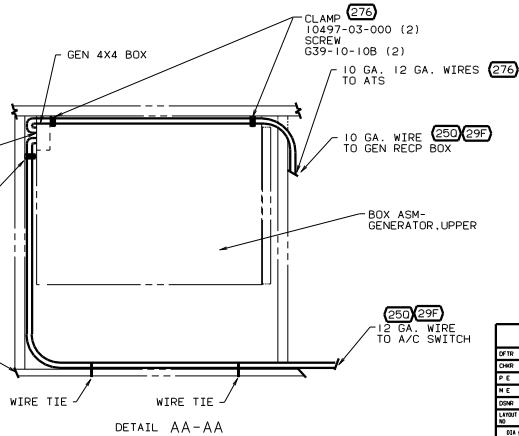
- NOTES:
1. ALL WIRE TO BE CLAMPED WITH CLAMP 10495-01-000 OR CLIP 80734-01-000 EVERY 700. USE SCREW G67-10-12B UNLESS OTHERWISE SPECIFIED.
 2. CLAMP TO FLOOR SUPPORT TUBES AS NECESSARY WITH CLAMP 10497-01-000
 3. WIRES THAT REST ON WIRE TRAYS ARE TO BE TIED DOWN WITH WIRE TIE 8343-02-000.

FOR ELECTRICAL TORQUE SPECIFICATIONS SEE DWG NO. 128783-01-000

X-X

FOR ELECTRICAL CALLOUTS SEE DWG NO. 121339-01-000

- (49X) BED-QUEEN - BACKWALL
- (45G) BED-TWINS
- (29F) A/C ROOF-TWO 13,500 BTU
- (276) A/C ROOF-HI EFF (2) W/EMS
- (265) CODES/STANDARDS-CSA/CMVSS
- (250) A/C ROOF AIR (1) 14,800 BTU
- (12D) ELECTRICAL SYSTEM 30 AMP
- (181) CODES/STANDARDS USA



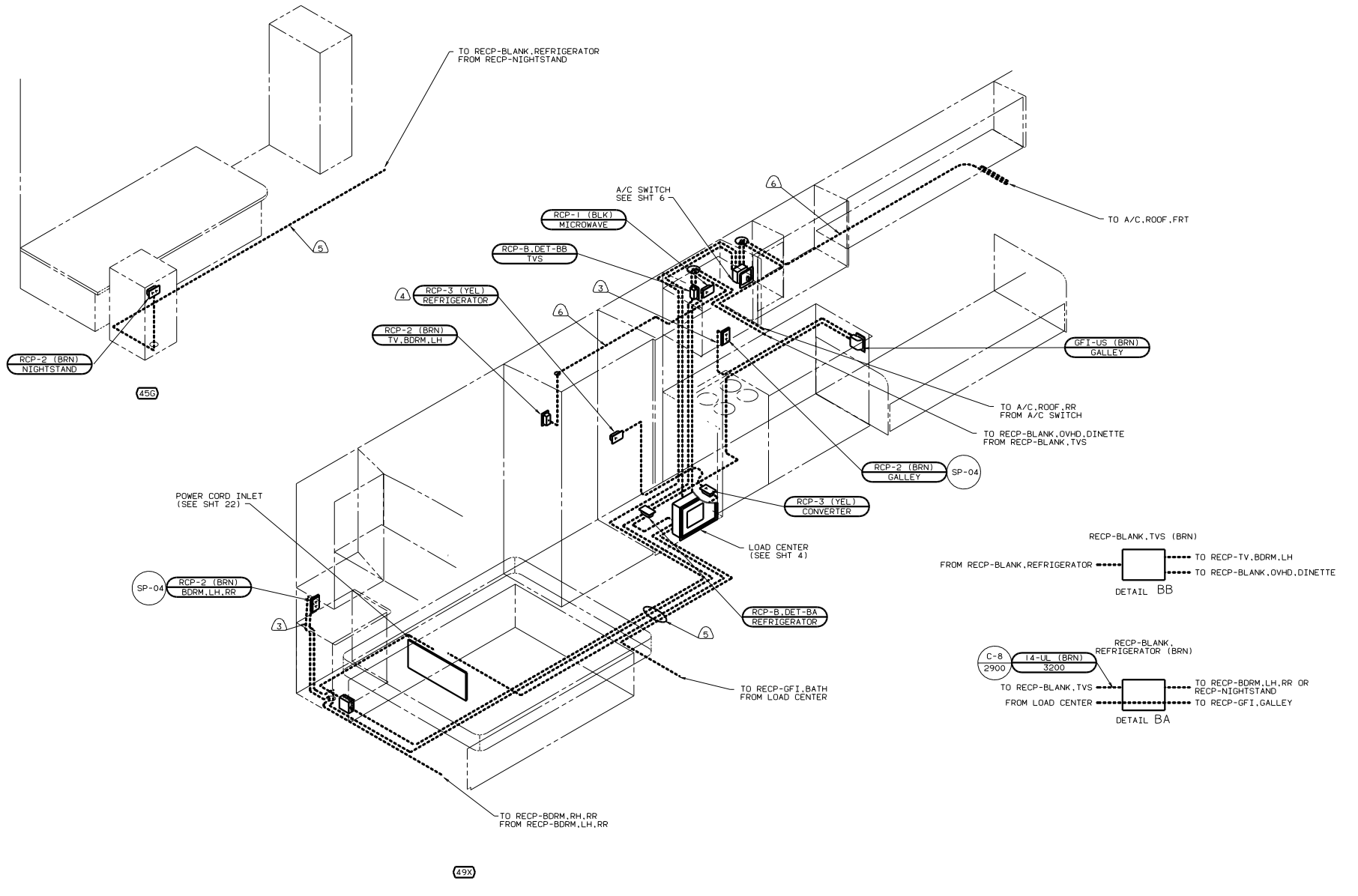
WINNEBAGO 00 F32T

DATE	DATE	DATE	DATE
DATE	DATE	DATE	DATE
DATE	DATE	DATE	DATE
DATE	DATE	DATE	DATE

WIRING INSTL - BODY, 110V (RF)

SHEET 1 OF 18

REF: 128874-Y



- ④ WIRE IN ROOF.
 - ⑤ WIRE ROUTED BELOW FLOOR
 - ④ LOCATE TOP OF REFRIGERATOR RECEPTACLE 300 ABOVE SHELF.
 - ③ WIRE ROUTED THRU SIDEWALL.
2. ALL WIRES ARE TO BE CLAMPED WITH CLAMP 10497-05-000 WITHIN 200 OF OUTLET BOXES. USE SCREW G67-10-12B.
1. ALL WIRE TO BE CLAMPED WITH CLAMP 10495-01-000 OR CLIP 80734-01-000 EVERY 700. USE SCREW G67-10-12B UNLESS OTHERWISE SPECIFIED.

FOR ELECTRICAL TORQUE SPECIFICATIONS SEE DWG NO. 128783-01-000

(X-X)

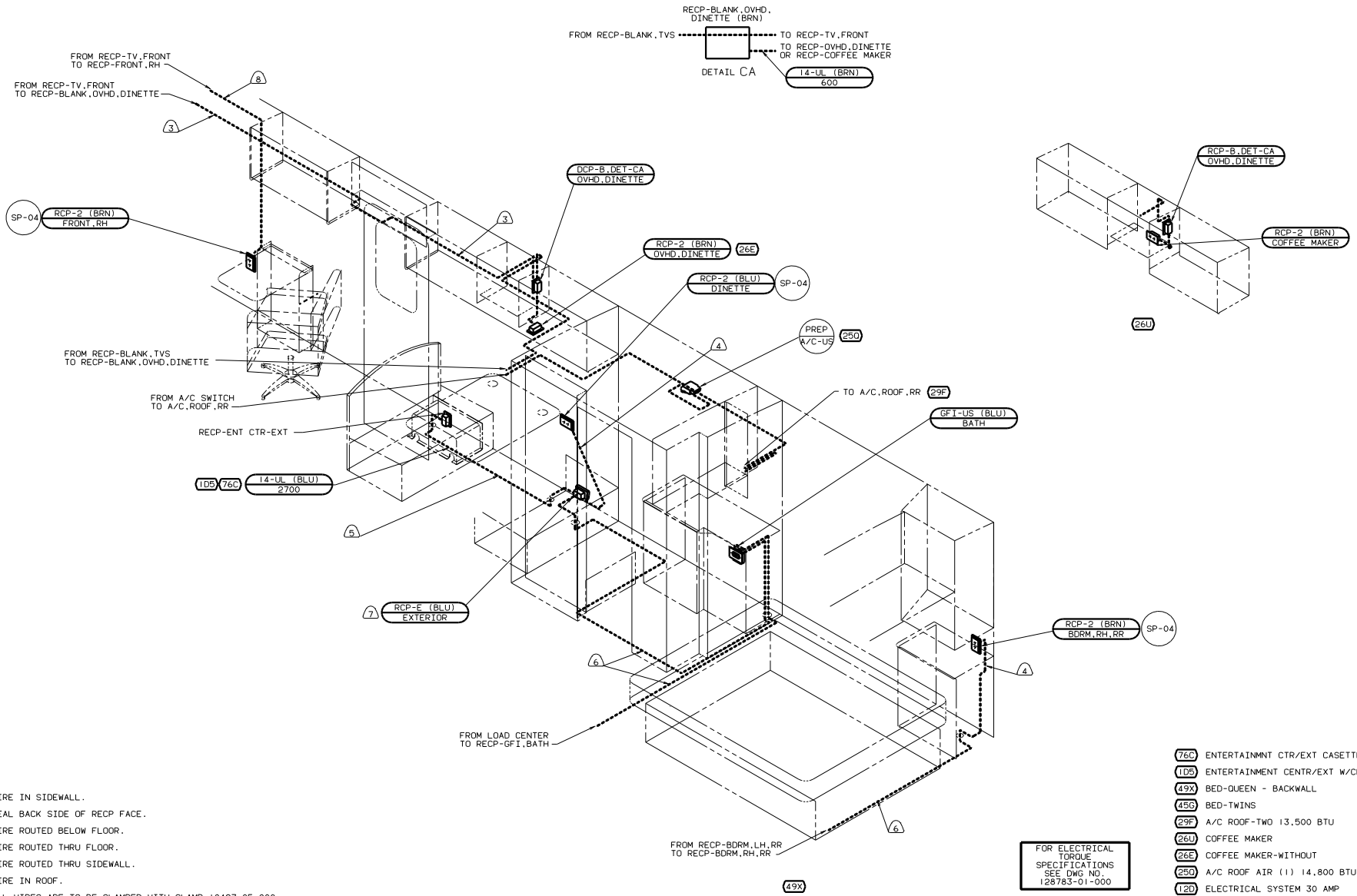
FOR ELECTRICAL CALLOUTS SEE DWG NO. 121339-01-000

- ④⑨X BED-QUEEN - BACKWALL
- ④⑤G BED-TWINS
- ②⑨F A/C ROOF-TWO 13,500 BTU
- ②⑤D A/C ROOF AIR (1) 14,800 BTU
- ①②D ELECTRICAL SYSTEM 30 AMP
- ①B1 CODES/STANDARDS USA

181 120 250 29F 00 F32T

WIRING INSTL - BODY 110V (130US)

SHEET 2 OF 18



- 8) WIRE IN SIDEWALL.
- 7) SEAL BACK SIDE OF RECP FACE.
- 6) WIRE ROUTED BELOW FLOOR.
- 5) WIRE ROUTED THRU FLOOR.
- 4) WIRE ROUTED THRU SIDEWALL.
- 3) WIRE IN ROOF.

2. ALL WIRES ARE TO BE CLAMPED WITH CLAMP 10497-05-000 WITHIN 200 OF OUTLET BOXES. USE SCREW G67-10-12B.

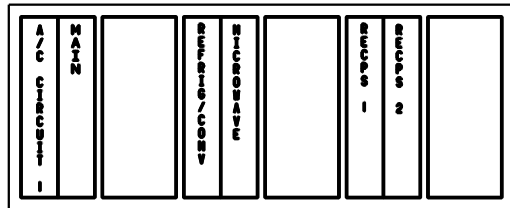
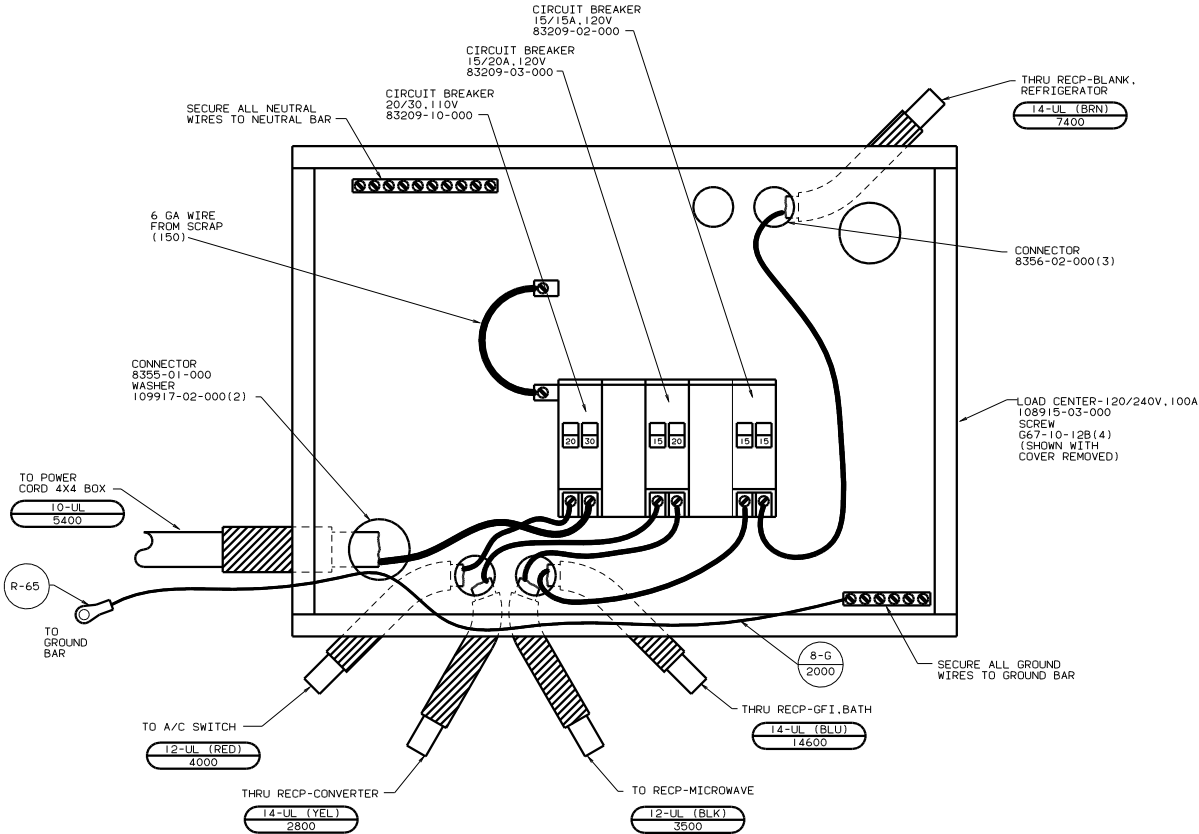
1. ALL WIRE TO BE CLAMPED WITH CLAMP 10495-01-000 OR CLIP 80734-01-000 EVERY 700. USE SCREW G67-10-12B UNLESS OTHERWISE SPECIFIED.

NOTES:

FOR ELECTRICAL TORQUE SPECIFICATIONS SEE DWG NO. 128783-01-000

FOR ELECTRICAL CALLOUTS SEE DWG NO. 121339-01-000

- 76C ENTERTAINMENT CTR/EXT CASSETTE
- 1D5 ENTERTAINMENT CENTR/EXT W/CD
- 49X BED-QUEEN - BACKWALL
- 45B BED-TWINS
- 29F A/C ROOF-TWO 13,500 BTU
- 26U COFFEE MAKER
- 26E COFFEE MAKER-WITHOUT
- 25D A/C ROOF AIR (1) 14,800 BTU
- 12D ELECTRICAL SYSTEM 30 AMP
- 1B1 CODES/STANDARDS USA
- 1B1 12D



INSTALL LABEL ON FRONT PANEL BELOW BREAKERS BETWEEN MOUNTING HOLES

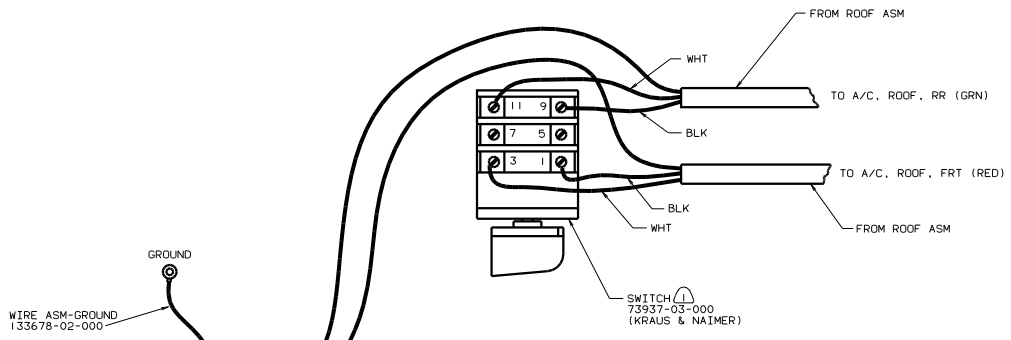
1. ALL CABLES SHALL BE COVERED WITH CONVOLUTE SLIT 41953-01-000 UNLESS OTHERWISE SPECIFIED. 600 LESS THAN CABLE LENGTH.

- (29F) A/C ROOF-TWO 13,500 BTU
- (250) A/C ROOF AIR (1) 14,800 BTU
- (120) ELECTRICAL SYSTEM 30 AMP
- (1B1) CODES/STANDARDS USA

FOR ELECTRICAL CALLOUTS SEE DWG NO. 121339-01-000

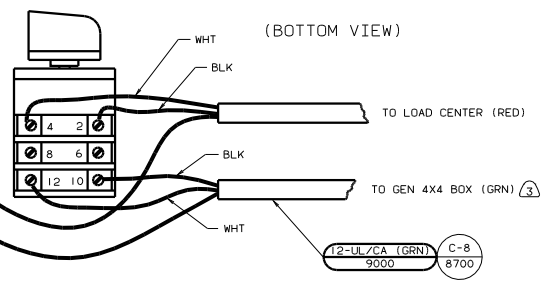
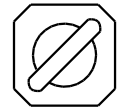
FOR ELECTRICAL TORQUE SPECIFICATIONS SEE DWG NO. 128783-01-000

WIRING INSTL-BODY, 110V(LC300S)
 SHEET 4 OF 18
 133756

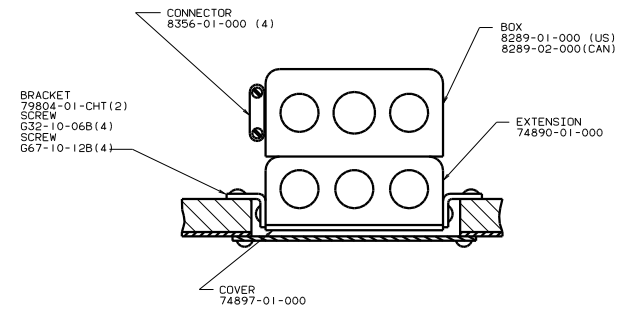


SWITCH
73937-03-000
(KRAUS & NAIMER)

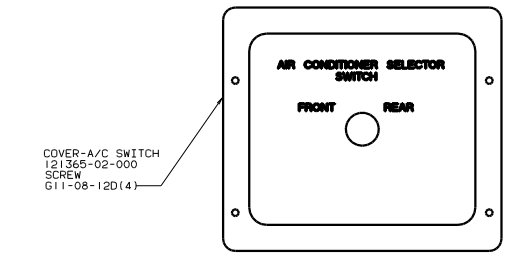
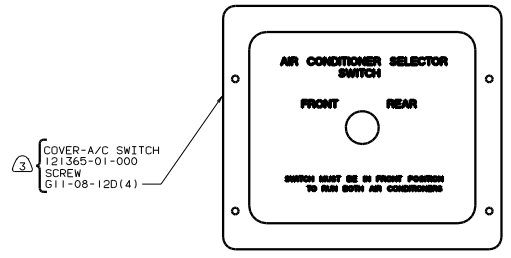
(TOP VIEW)



(BOTTOM VIEW)



TOP VIEW OF BOX



- NOTES:
- (3) USE WITH 5000 WATT GENERATOR OR LARGER.
 - 2. ALL GROUND WIRES TO BE COVERED WITH TUBING 8041-02-000.
 - (1) FASTEN SWITCH TO COVER 74897-01-000 BEFORE FASTENING COVER TO BOX.

FOR ELECTRICAL TORQUE SPECIFICATIONS SEE DWG NO. 128763-01-000

FOR ELECTRICAL CALLOUTS SEE DWG NO. 121339-01-000

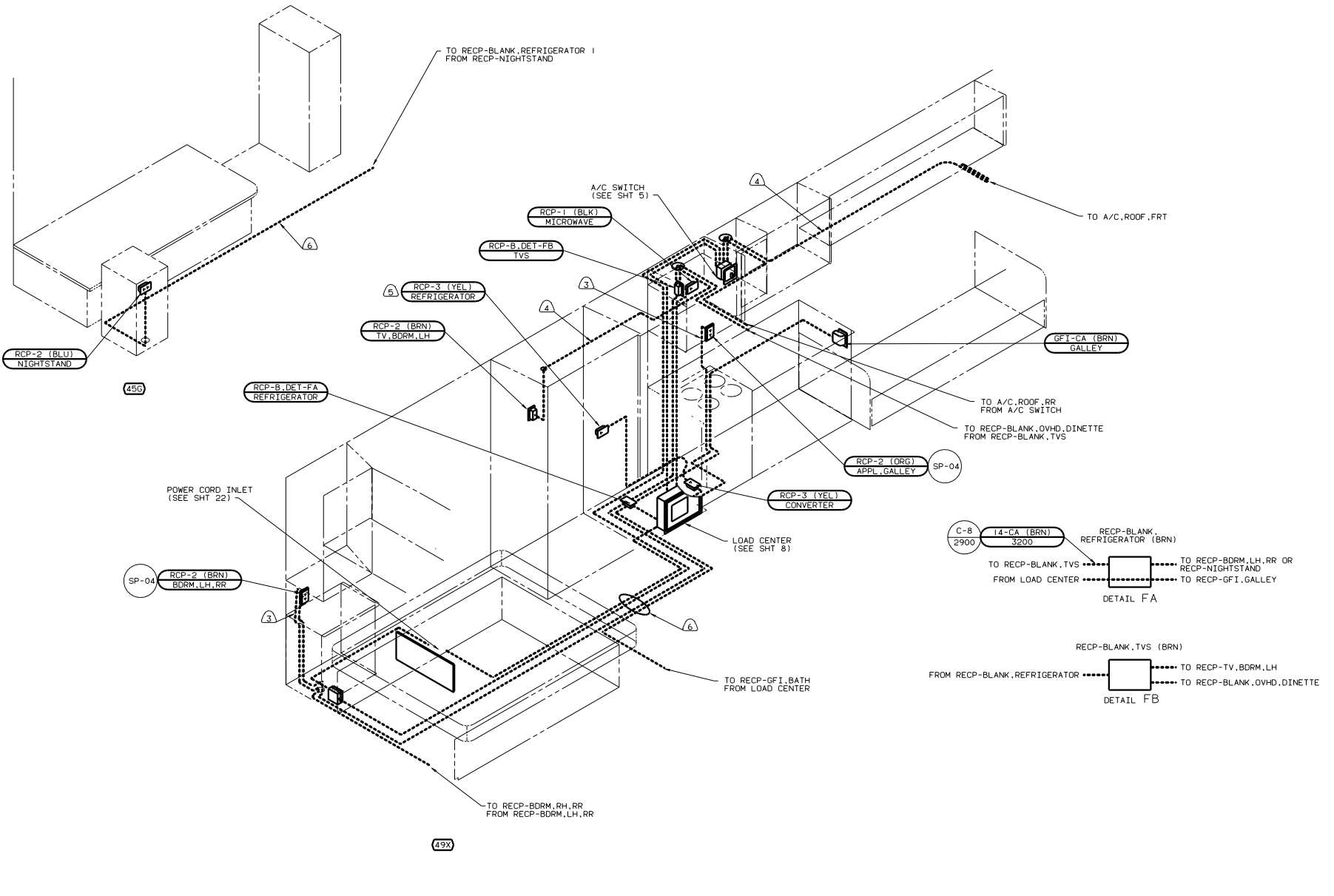
- (29F) A/C ROOF-TWO 13,500 BTU
- (265) CODES/STANDARDS-CSA/CMVSS
- (250) A/C ROOF AIR (1) 14,800 BTU
- (120) ELECTRICAL SYSTEM 30 AMP
- (1B1) CODES/STANDARDS USA

WIRING INSTL-BODY,110V(A/C SW)
128874

FOR ELECTRICAL TORQUE SPECIFICATIONS SEE DWG NO. 128763-01-000

FOR ELECTRICAL CALLOUTS SEE DWG NO. 121339-01-000

181 120 250 265 29F 00 F32T
128874

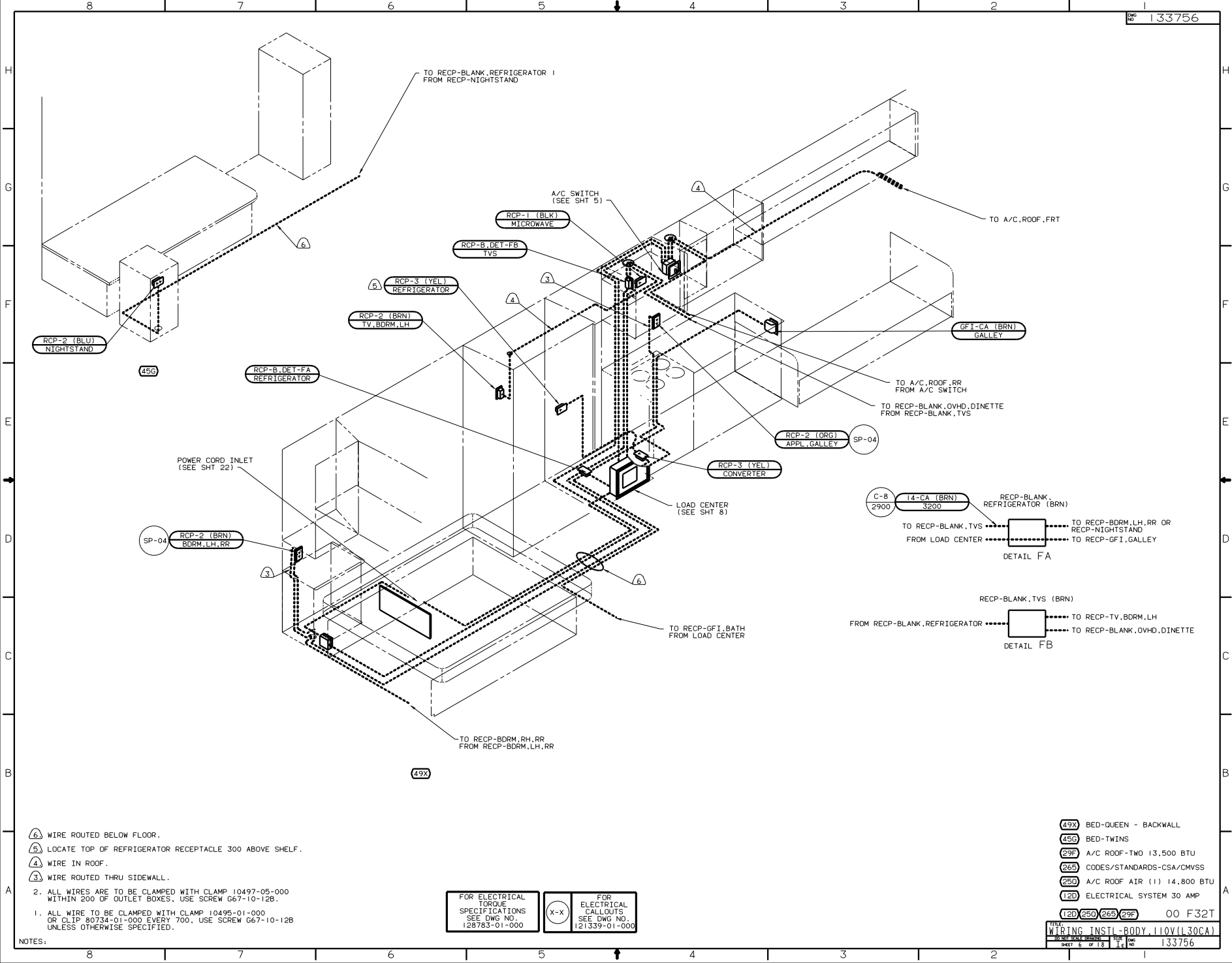


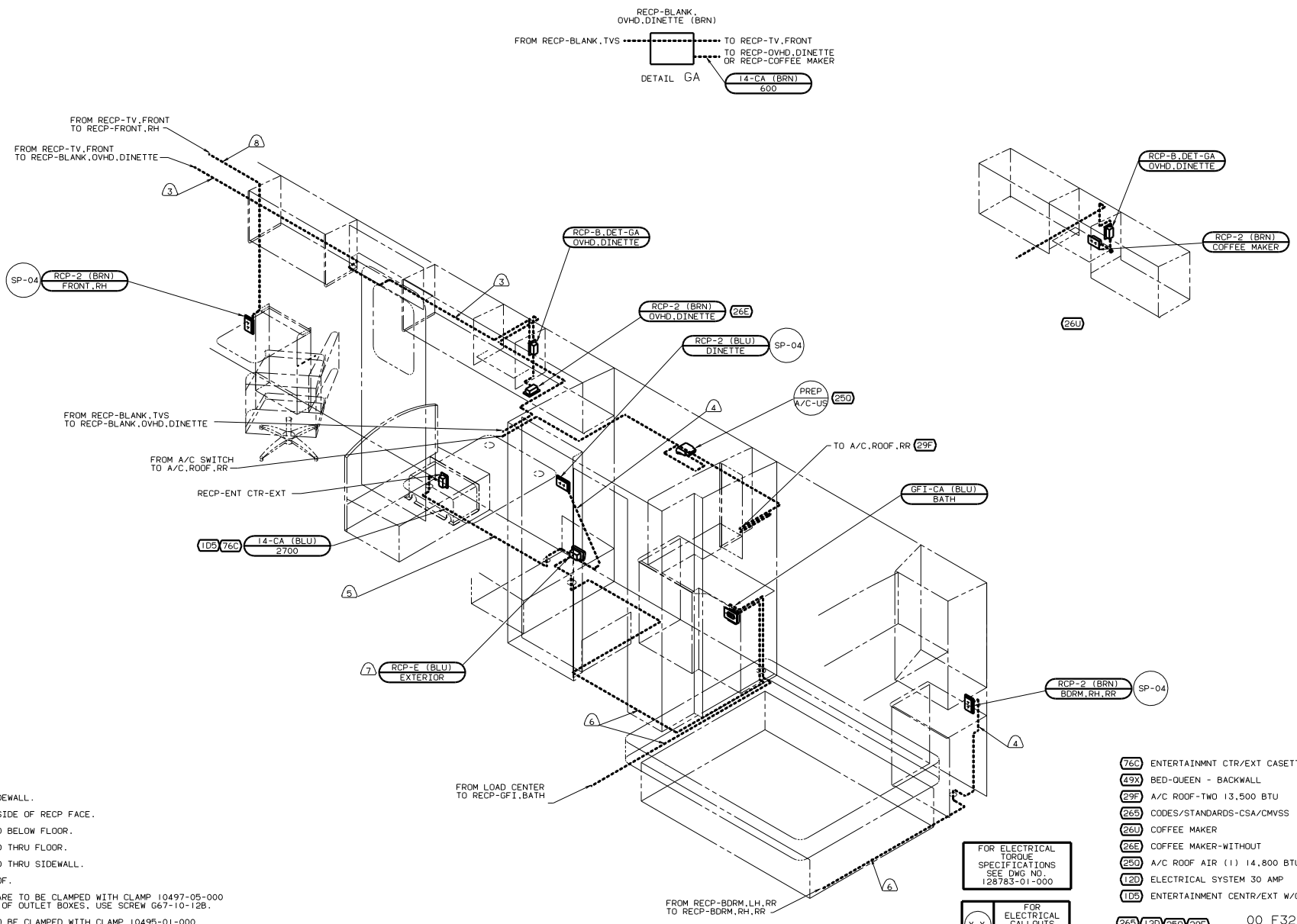
- ⑥ WIRE ROUTED BELOW FLOOR.
 - ⑤ LOCATE TOP OF REFRIGERATOR RECEPTACLE 300 ABOVE SHELF.
 - ④ WIRE IN ROOF.
 - ③ WIRE ROUTED THRU SIDEWALL.
2. ALL WIRES ARE TO BE CLAMPED WITH CLAMP 10497-05-000 WITHIN 200 OF OUTLET BOXES. USE SCREW G67-10-12B.
1. ALL WIRE TO BE CLAMPED WITH CLAMP 10495-01-000 OR CLIP 80734-01-000 EVERY 700. USE SCREW G67-10-12B UNLESS OTHERWISE SPECIFIED.

FOR ELECTRICAL TORQUE SPECIFICATIONS SEE DWG NO. 128783-01-000	(X-X)	FOR ELECTRICAL CALLOUTS SEE DWG NO. 121339-01-000
--	-------	---

④9X	BED-QUEEN - BACKWALL
④5G	BED-TWINS
②9F	A/C ROOF-TWO 13,500 BTU
②6S	CODES/STANDARDS-CSA/CMVSS
②5D	A/C ROOF AIR (1) 14,800 BTU
①2D	ELECTRICAL SYSTEM 30 AMP
①2D ②5D ②6S ②9F	00 F32T
WIRING INSTL - BODY, 110V (130A)	
SHEET 6 OF 18	
133756	

NOTES:





- ⑧ WIRE IN SIDEWALL.
- ⑦ SEAL BACK SIDE OF RECP FACE.
- ⑥ WIRE ROUTED BELOW FLOOR.
- ⑤ WIRE ROUTED THRU FLOOR.
- ④ WIRE ROUTED THRU SIDEWALL.
- ③ WIRE IN ROOF.

2. ALL WIRES ARE TO BE CLAMPED WITH CLAMP 10497-05-000 WITHIN 200 OF OUTLET BOXES, USE SCREW G67-10-12B.

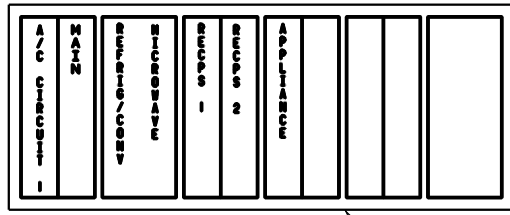
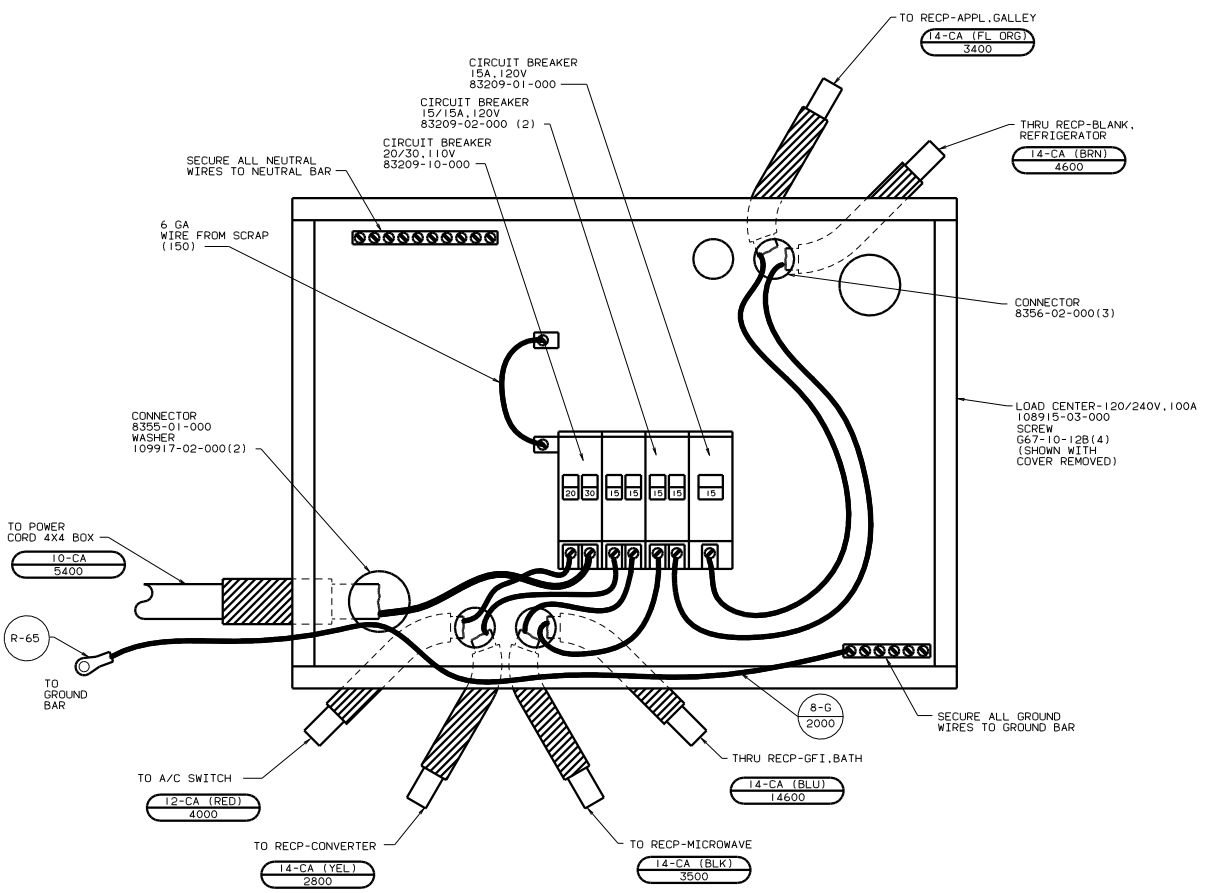
1. ALL WIRE TO BE CLAMPED WITH CLAMP 10495-01-000 OR CLIP 80734-01-000 EVERY 700, USE SCREW G67-10-12B UNLESS OTHERWISE SPECIFIED.

- ⑦⑥C ENTERTAINMENT CTR/EXT CASSETTE
- ④9X BED-QUEEN - BACKWALL
- ②9F A/C ROOF-TWO 13,500 BTU
- ②65 CODES/STANDARDS-CSA/CMVSS
- ②6U COFFEE MAKER
- ②6E COFFEE MAKER-WITHOUT
- ②50 A/C ROOF AIR (1) 14,800 BTU
- ①20 ELECTRICAL SYSTEM 30 AMP
- ①D5 ENTERTAINMENT CTR/EXT W/CD

FOR ELECTRICAL TORQUE SPECIFICATIONS SEE DWG NO. 128783-01-000

FOR ELECTRICAL CALLOUTS SEE DWG NO. 121339-01-000

②65	①20	②50	②9F	00 F32T
WIRING INSTL - BODY, 110V(R30CA)				128874
SHEET 7 OF 18				1/E



INSTALL LABEL ON FRONT PANEL BELOW BREAKERS BETWEEN MOUNTING HOLES

LABEL 95721-26-000

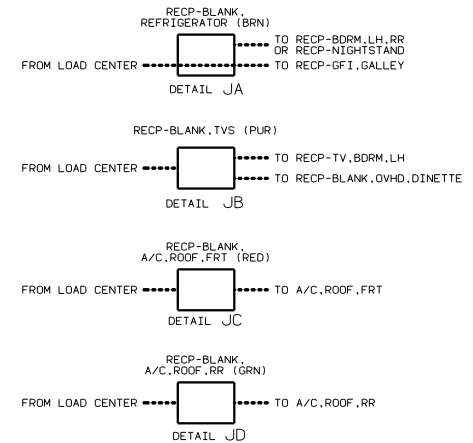
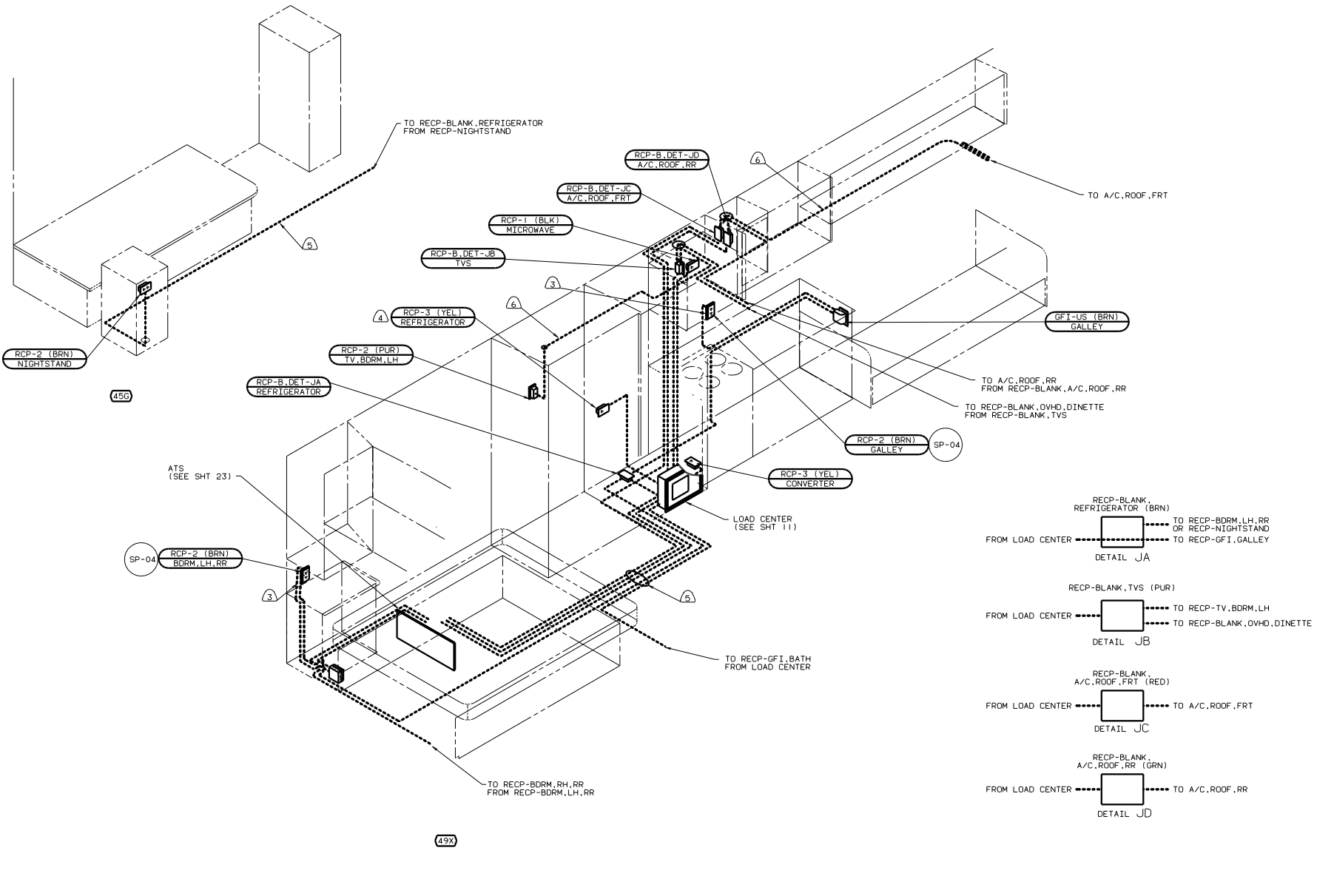
ALL CABLES SHALL BE COVERED WITH CONVOLUTE SLIT 41953-01-000 UNLESS OTHERWISE SPECIFIED. 600 LESS THAN CABLE LENGTH.

- (23F) A/C ROOF-TWO 13,500 BTU
- (265) CODES/STANDARDS-CSA/CMVSS
- (250) A/C ROOF AIR (1) 14,800 BTU
- (120) ELECTRICAL SYSTEM 30 AMP

FOR ELECTRICAL CALLOUTS SEE DWG NO. 121339-01-000

FOR ELECTRICAL TORQUE SPECIFICATIONS SEE DWG NO. 128783-01-000

WIRING INSTL-BODY, 110V(130CA)	00 F32T
SHEET 8 OF 18	DWG NO 133756



FOR ELECTRICAL TORQUE SPECIFICATIONS SEE DWG NO. 128783-01-000

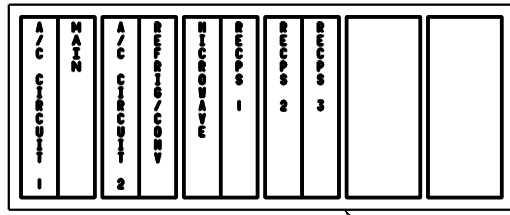
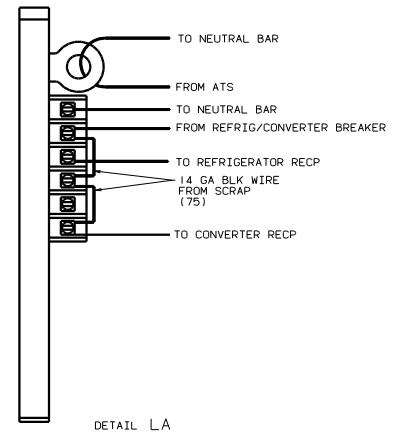
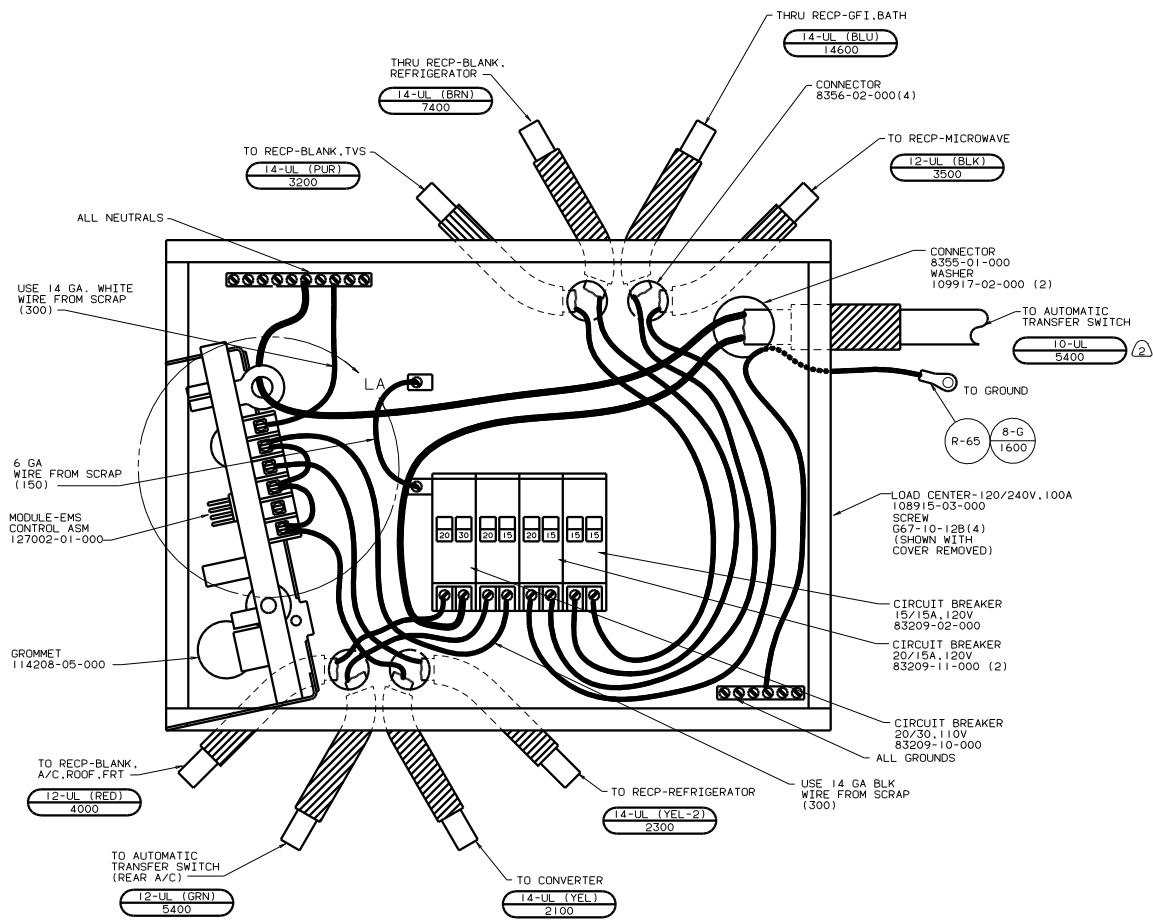
(X-X)

FOR ELECTRICAL CALLOUTS SEE DWG NO. 121339-01-000

49X) BED-QUEEN - BACKWALL
 45G) BED-TWINS
 276) A/C ROOF-HI EFF (2) W/EMS
 120) ELECTRICAL SYSTEM 30 AMP
 181) CODES/STANDARDS USA

181 120 276 00 F32T

WIRING INSTL - BODY, 110V (1.30US)
 SHEET 9 OF 18



INSTALL LABEL ON FRONT PANEL BELOW BREAKERS BETWEEN MOUNTING HOLES

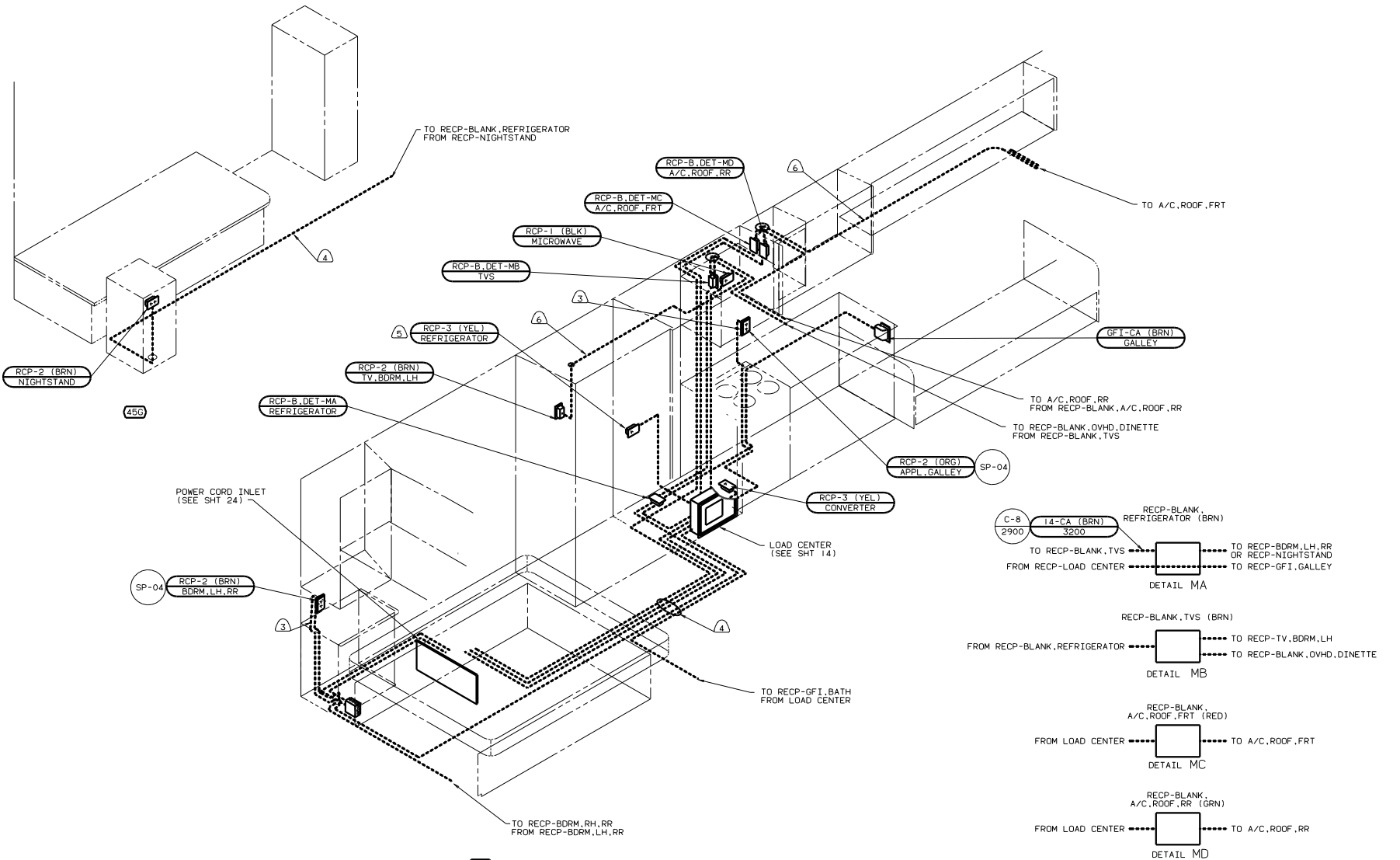
- ② WIRE MUST BE 700 LONG INSIDE BOX.
1. ALL CABLE SHALL BE COVERED WITH CONVOLUTE SLIT 41953-01-000 UNLESS OTHERWISE SPECIFIED. 600 LESS THAN CABLE LENGTH.

FOR ELECTRICAL TORQUE SPECIFICATIONS SEE DWG NO 128783-01-000

(X-X) FOR ELECTRICAL CALLOUTS SEE DWG NO 121339-01-000

(276) A/C ROOF-HI EFF (2) W/EMS
(120) ELECTRICAL SYSTEM 30 AMP
(181) CODES/STANDARDS USA

(181) (120) (276) 00 F32T
WIRING INSTL - BODY, 110V (LC30US)
SHEET 11 OF 18 133756



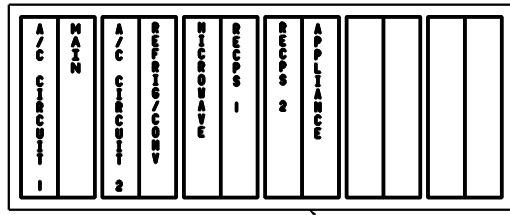
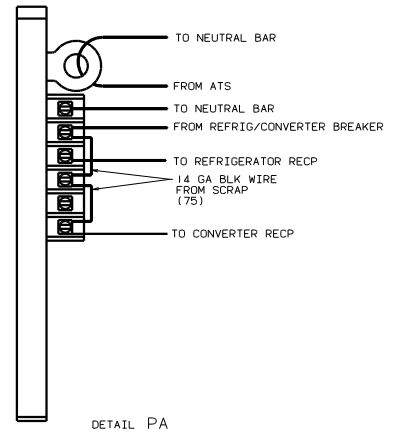
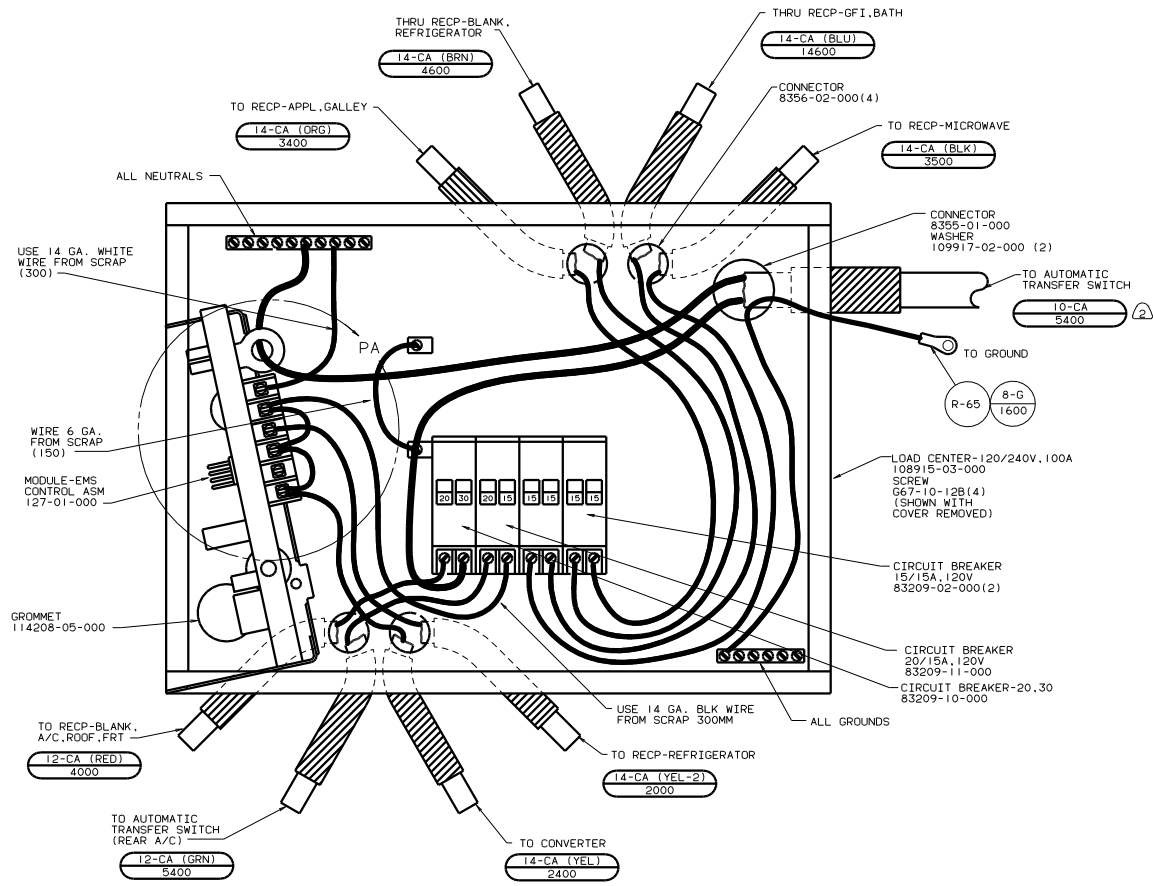
- ⑥ WIRE IN ROOF.
 - ⑤ LOCATE TOP OF REFRIGERATOR RECEPTACLE 300 ABOVE SHELF.
 - ④ WIRE ROUTED BELOW FLOOR.
 - ③ WIRE ROUTED THRU SIDEWALL.
2. ALL WIRES ARE TO BE CLAMPED WITH CLAMP 10497-05-000 WITHIN 200 OF OUTLET BOXES. USE SCREW G67-10-12B.
1. ALL WIRE TO BE CLAMPED WITH CLAMP 10495-01-000 OR CLIP 80734-01-000 EVERY 700. USE SCREW G67-10-12B UNLESS OTHERWISE SPECIFIED.

FOR ELECTRICAL TORQUE SPECIFICATIONS SEE DWG NO. 128783-01-000	(X-X)	FOR ELECTRICAL CALLOUTS SEE DWG NO. 121339-01-000
--	-------	---

④9X BED-QUEEN - BACKWALL
 ④5G BED-TWINS
 ②76 A/C ROOF-HI EFF (2) W/EMS
 ②65 CODES/STANDARDS-CSA/CMVSS
 ①20 ELECTRICAL SYSTEM 30 AMP
 ①20 ②65 ②76 00 F32T

WIRING INSTL - BODY 110V (130CA)
 SHEET 12 OF 18
 133756

NOTES:



LABEL 95721-28-000

INSTALL LABEL ON FRONT PANEL BELOW BREAKERS BETWEEN MOUNTING HOLES

- NOTES:
- ② WIRE MUST BE 700 LONG INSIDE BOX
 - 1. ALL CABLES SHALL BE COVERED WITH CONVOLUTE SLIT 41953-01-000 UNLESS OTHERWISE SPECIFIED. 600 LESS THAN CABLE LENGTH.

- ②76 A/C ROOF-HI EFF (2) W/EMS
- ②65 CODES/STANDARDS-CSA/CMVSS
- ①20 ELECTRICAL SYSTEM 30 AMP

FOR ELECTRICAL TORQUE SPECIFICATIONS SEE DWG NO. 128783-01-000

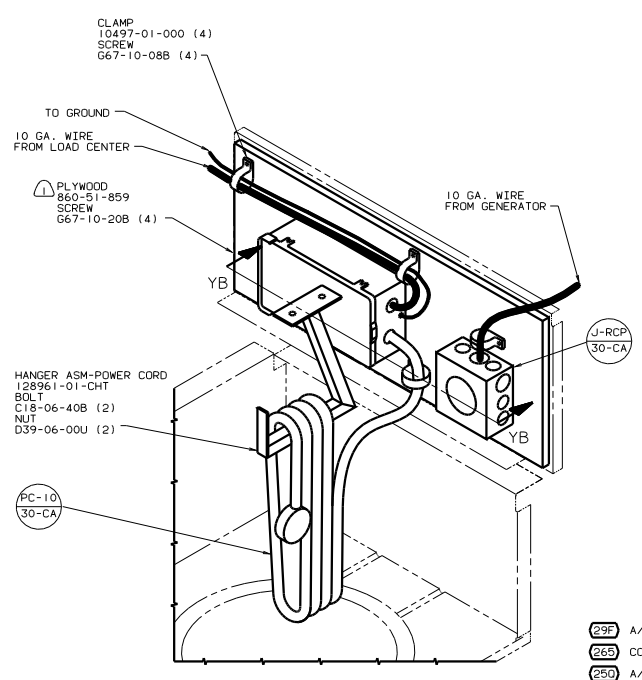
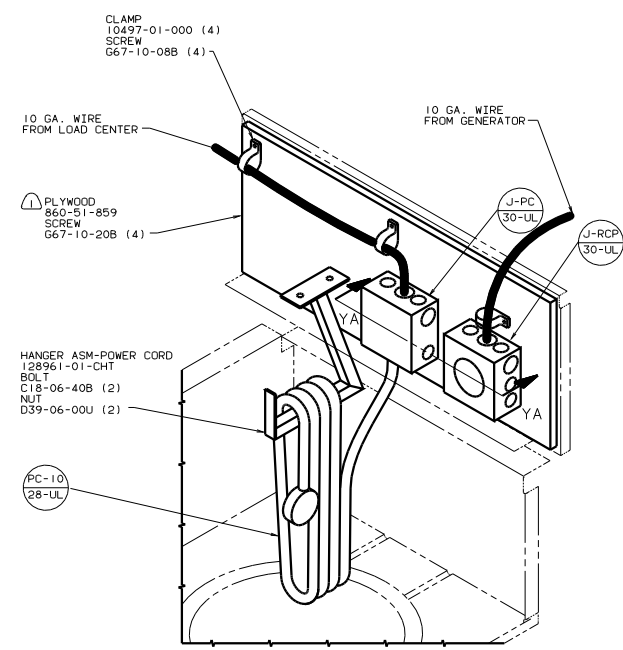
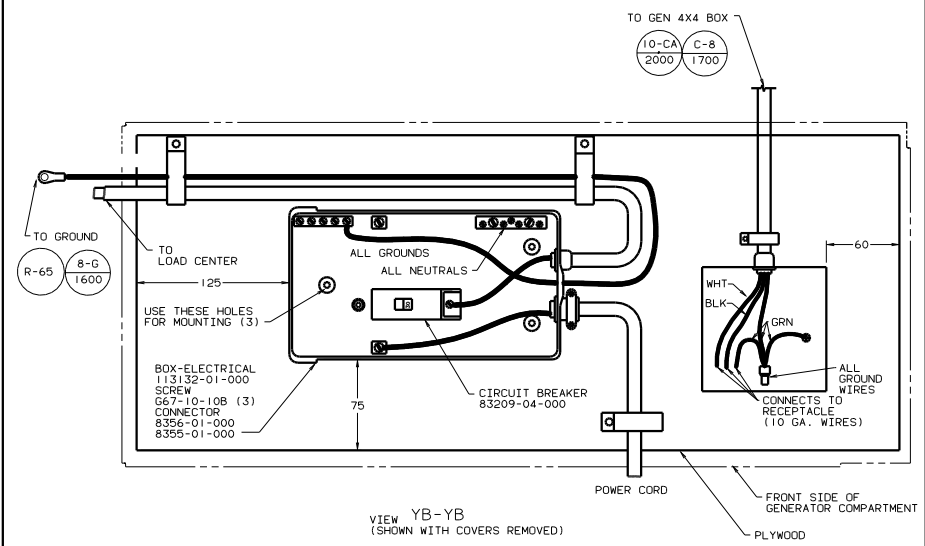
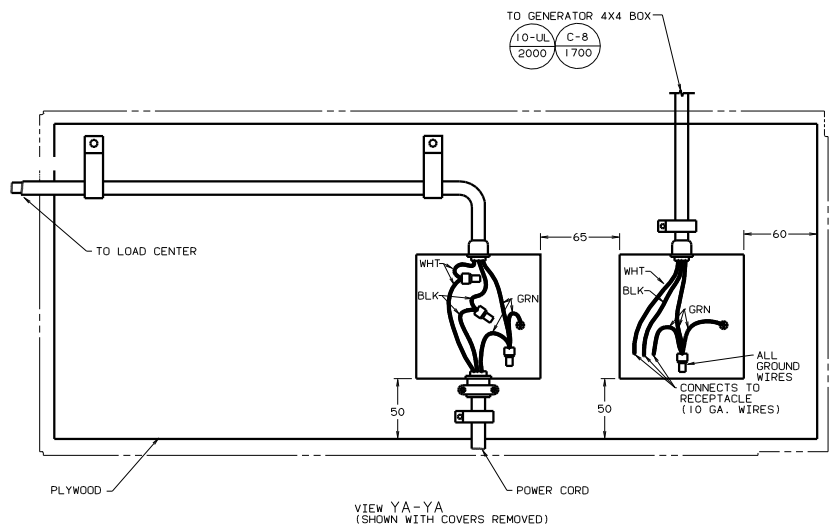
FOR ELECTRICAL CALLOUTS SEE DWG NO. 121339-01-000

①20②65②76 00 F32T

WIRING INSTL-BODY, 110V(LC30CA)

SHEET 14 OF 18

128874



NOTES:
 1 PAINT EXPOSED SURFACES BLACK 106112-01-000.

(1B1) (265)

FOR ELECTRICAL TORQUE SPECIFICATIONS SEE DWG NO. 128783-01-000

X-X

FOR ELECTRICAL CALLOUTS SEE DWG NO. 121339-01-000

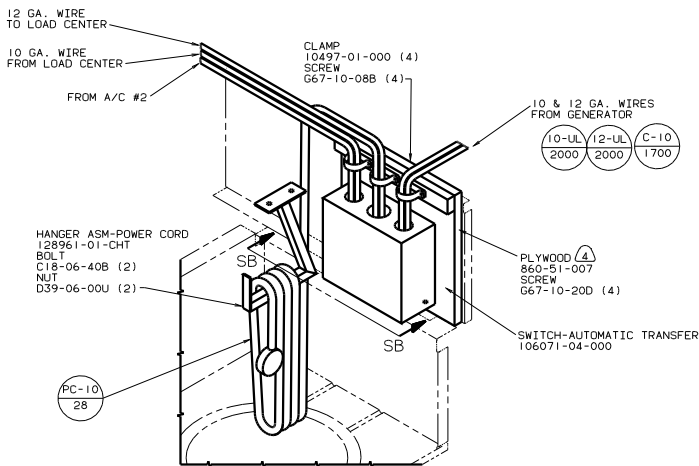
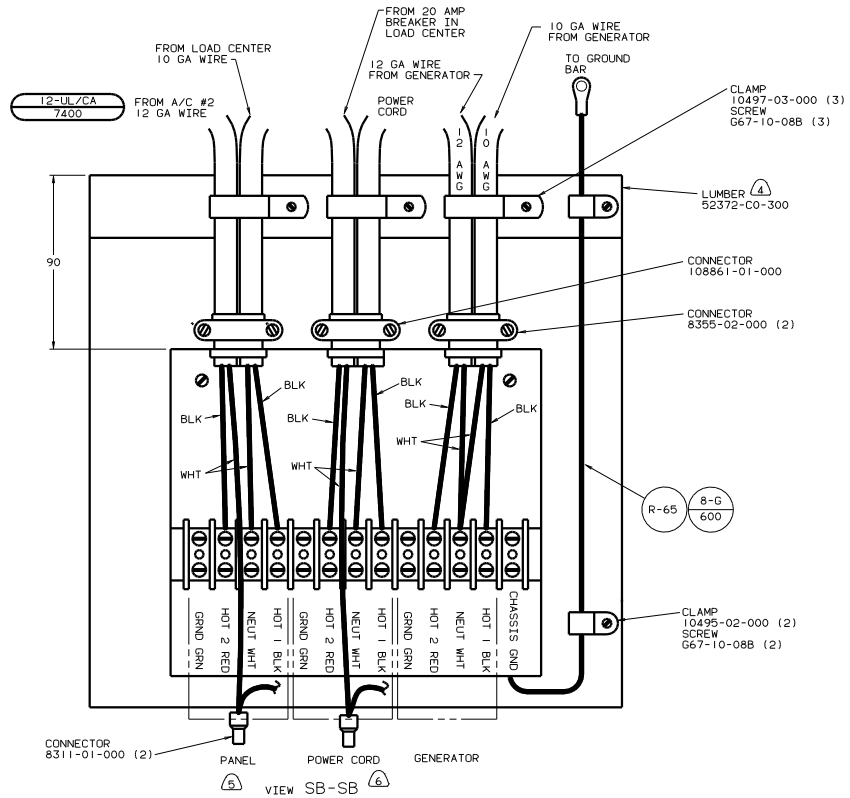
(29F) A/C ROOF-TWO 13,500 BTU
 (265) CODES/STANDARDS-CSA/CMVSS
 (250) A/C ROOF AIR (1) 14,800 BTU
 (1B1) CODES/STANDARDS USA

250 29F 00 F32T

WIRING INSTL-BODY, LIQV(PCI)

15 OF 18

133756



- 6. FOR THIS CONNECTION REMOVE NEUTRAL WIRE MARKED BLUE FROM CONNECTIONS MARKED POWER CORD.
- 5. FOR THIS CONNECTION REMOVE NEUTRAL WIRE MARKED BLUE FROM CONNECTIONS MARKED PANEL.
- 4. PAINT EXPOSED SURFACE BLACK WITH 106112-01-000
- 3. ALL 110V STRANDED WIRE W/O TERMINALS TO BE STRIPPED 10MM AND SOLDER DIPPED.
- 2. GROUND WIRES NOT SHOWN FOR CLARITY.
- 1. ALL WIRES TO BE CLAMPED WITH IN 200 OF BOX.

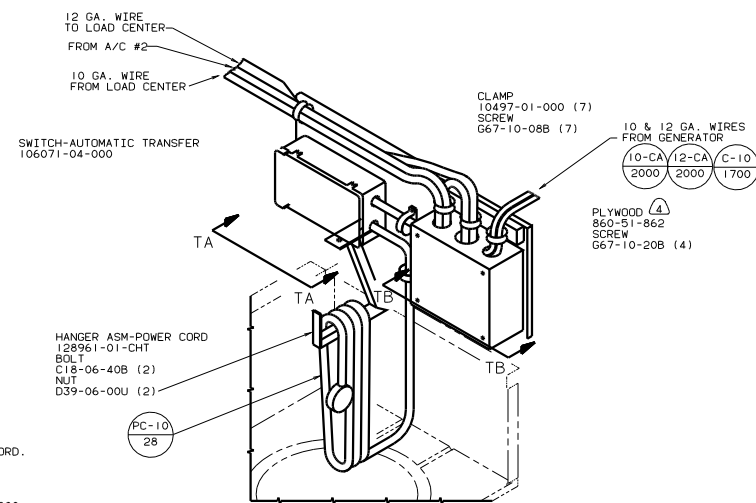
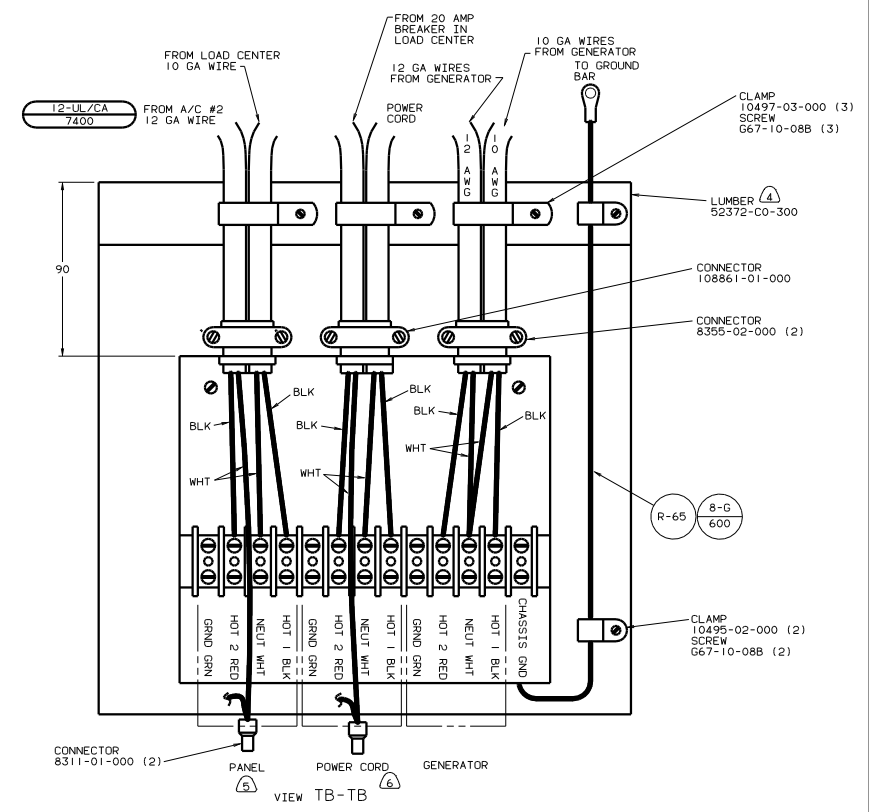
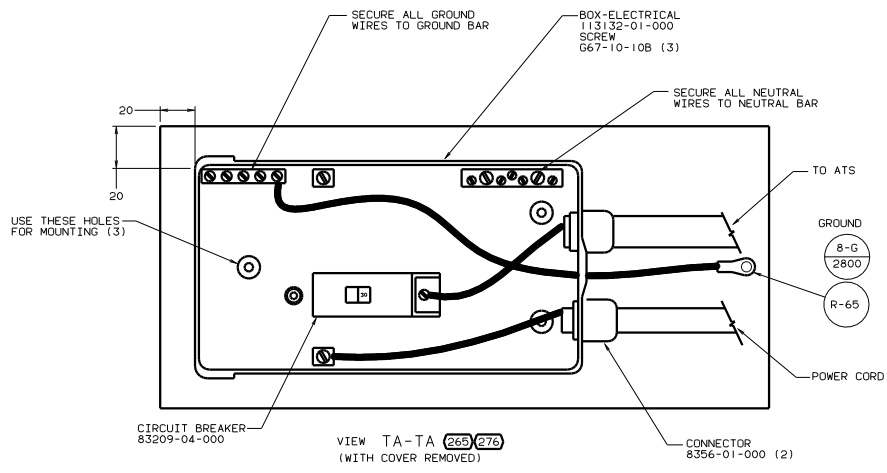
NOTES:

FOR ELECTRICAL TORQUE SPECIFICATIONS SEE DWG NO. 128783-01-000	X-X	FOR ELECTRICAL CALLOUTS SEE DWG NO. 121339-01-000
--	-----	---

- 276 A/C ROOF-HI EFF (2) W/EMS
- 12D ELECTRICAL SYSTEM 30 AMP
- 1B1 CODES/STANDARDS USA

1B1 12D 276 00 F32T

FILE	133756
DATE	11/10/00
DWG NO.	133756
SHEET	16 OF 18



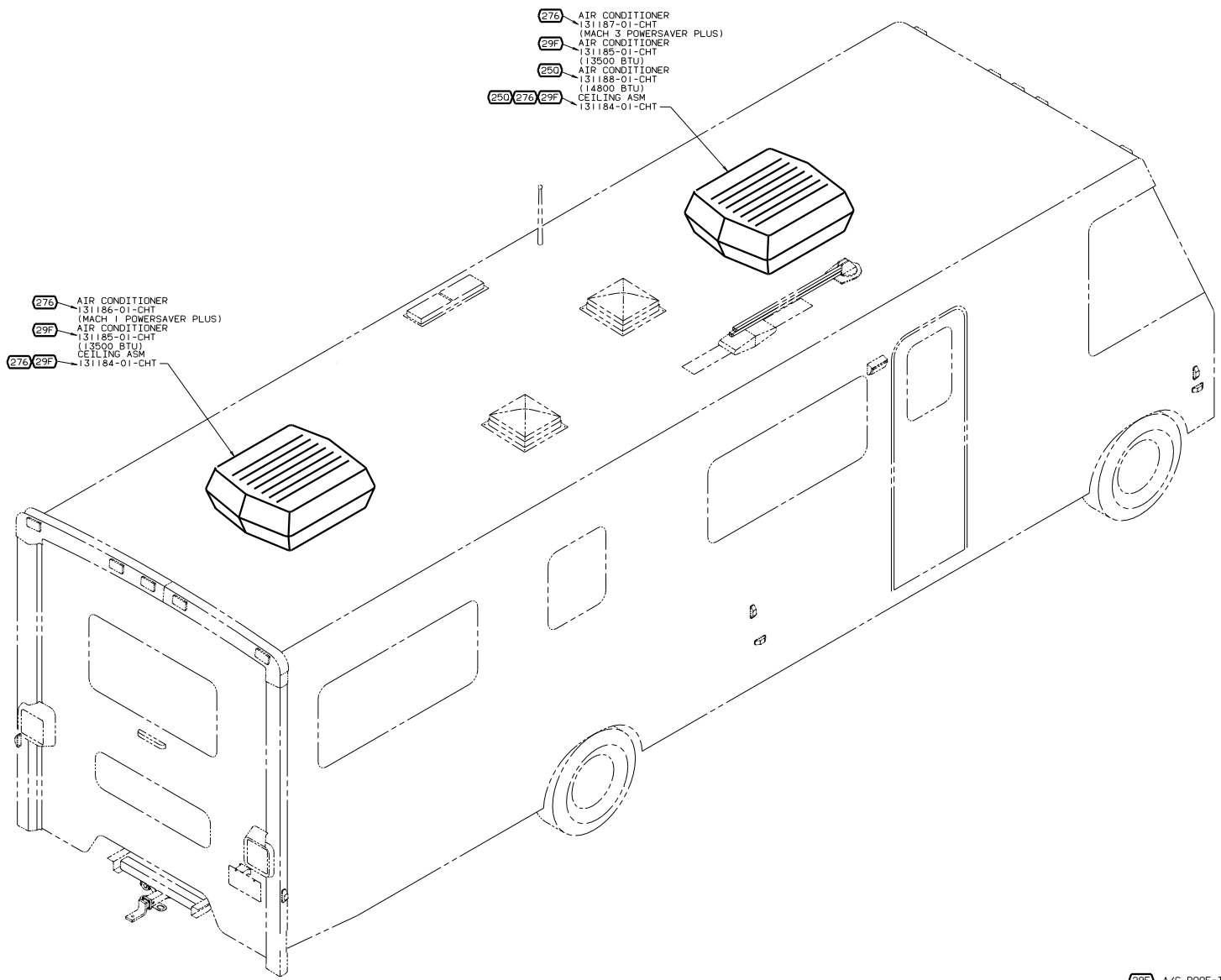
- (A) FOR THIS CONNECTION REMOVE NEUTRAL WIRE MARKED BLUE FROM CONNECTIONS MARKED POWER CORD.
- (B) FOR THIS CONNECTION REMOVE NEUTRAL WIRE MARKED BLUE FROM CONNECTIONS MARKED PANEL.
- (C) PAINT EXPOSED SURFACE BLACK WITH 106112-01-000
- 3. ALL 110V STRANDED WIRE W/O TERMINALS TO BE STRIPPED 10MM AND SOLDER DIPPED.
- 2. GROUND WIRES NOT SHOWN FOR CLARITY.
- 1. ALL WIRES TO BE CLAMPED WITH IN 200 OF BOX.

- (276) A/C ROOF-HI EFF (2) W/EMS
- (265) CODES/STANDARDS-CSA/CMVSS
- (12D) ELECTRICAL SYSTEM 30 AMP

FOR ELECTRICAL TORQUE SPECIFICATIONS SEE DWG NO. 128783-01-000	X-X	FOR ELECTRICAL CALLOUTS SEE DWG NO. 121339-01-000
--	-----	---

(120/265/276) 00 F32T

FILE	133756	REV	1
WIRING INSTL-BODY, 110V(ATS)		133756	
SHEET 17 OF 18		1 E	



276 AIR CONDITIONER
31186-01-CHT
(MACH 1 POWERSAVER PLUS)
29F AIR CONDITIONER
31185-01-CHT
(13500 BTU)
276 29F CEILING ASM
131184-01-CHT

276 AIR CONDITIONER
31187-01-CHT
(MACH 3 POWERSAVER PLUS)
29F AIR CONDITIONER
31185-01-CHT
(13500 BTU)
250 AIR CONDITIONER
31188-01-CHT
(14800 BTU)
250 276 29F CEILING ASM
131184-01-CHT

- 29F A/C ROOF-TWO 13,500 BTU
- 276 A/C ROOF-HI EFF (2) W/EMS
- 265 CODES/STANDARDS-CSA/CMVSS
- 250 A/C ROOF AIR (1) 14,800 BTU
- 1B1 CODES/STANDARDS USA

FOR ELECTRICAL
TORQUE
SPECIFICATIONS
SEE DWG NO.
126783-01-000

TITLE		1B1 265 00 F32T	
WIRING INSTL-BODY, LOW(EXT)		FIG	NO
NO	DATE	REV	NO
1		1	133756
SHEET 18 OF 18			

NOTES:

