



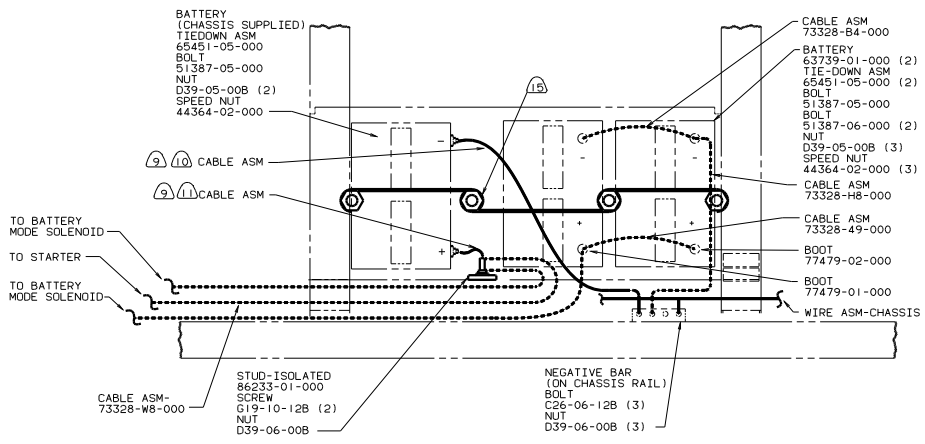
DANGER

Danger of electrical shock, burns or death. Always remove all power sources before attempting any repair, service or diagnostic work. Power can be present from shore power, generator, inverter or battery. All power sources must be disabled and secured before performing any service.

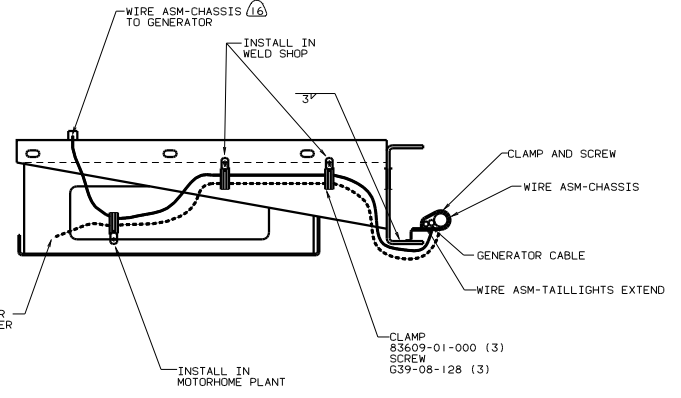


CAUTION

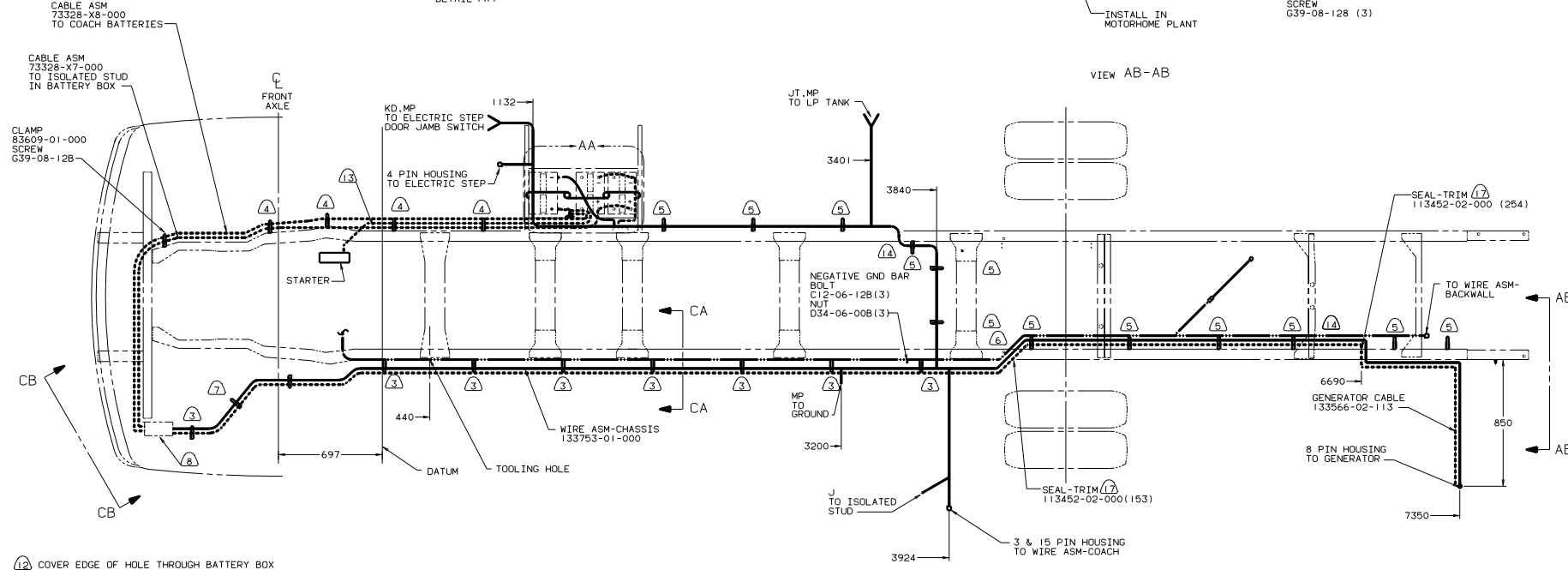
If you lack the skills, tools or equipment to perform diagnostic or repair work leave such work to an authorized Winnebago Industries dealer or other qualified shop.



DETAIL AA



VIEW AB-AB



- (2) COVER EDGE OF HOLE THROUGH BATTERY BOX WITH TRIM-VINYL 72368-02-000.
 - (1) TRIM CABLE TO 400MM, ADD TERMINAL 8348-01-000.
 - (10) TRIM CABLE TO 800MM, ADD TERMINAL 8348-01-000.
 - (9) SUPPLIED WITH CHASSIS.
 - (8) SEE WIRING INSTL-FRONT END FOR ADDITIONAL INFORMATION.
 - (7) COVER WITH CONDUIT 41953-09-000, 41953-10-000 & 41953-11-000 AS REQUIRED.
 - (6) ROUTE WIRES AND CABLE OVER SPRING HANGER AND ON TOP OF CHASSIS RAIL AT THIS POINT.
 - (5) CLAMP 10497-03-000, SCREW G39-08-128
 - (4) CLAMP 83609-01-000, SCREW G39-08-128
 - (3) CLAMP 83610-01-000, SCREW G39-08-128.
2. SECURE CONDUIT 41953-01-000, 41953-02-000 AND 41953-03-000 OVER ALL WIRES IN CONTACT WITH SHARP EDGES.
1. LEGEND: — WINNEBAGO, - - - - - CABLE, CHASSIS SUPPLIED.

- (17) COVER SHARP EDGES WHERE WIRE CROSSES FRAME RAIL.
- (16) SECURE SO WIRES DO NOT CONTACT EXHAUST.
- (15) USE TWO NUTS HERE TO ACCOUNT FOR BATTERY HEIGHT DIFFERENCE.
- (14) ROUTE WIRES & CABLE UNDER CHASSIS RAIL AT THIS POINT
- (13) BATTERY CABLE MUST BE INSTALLED TO STARTER MOTOR BEFORE ENGINE WIRING HARNESS AND ROUTED IN SUCH A MANNER AS TO PREVENT ANY POSSIBLE DEGRADATION FROM THE EXHAUST SYSTEM.

- (265) CODES/STANDARDS-CSA/CMVSS
- (TPK) WORKHORSE CH. 16.500LB. GVWR
- (1B1) CODES/STANDARDS USA

WINNEBAGO 00 F32T

OF IN	DATE	UNSPECIFIED TOLERANCES ARE:	MATERIAL
CHP	DATE	FR. DIM. (1:1)	
PL	DATE	FR. PLATE (1:1)	
PL	DATE	FR. PLATE (1:1)	
PL	DATE	FR. PLATE (1:1)	
PL	DATE	FR. PLATE (1:1)	
PL	DATE	FR. PLATE (1:1)	
PL	DATE	FR. PLATE (1:1)	
PL	DATE	FR. PLATE (1:1)	

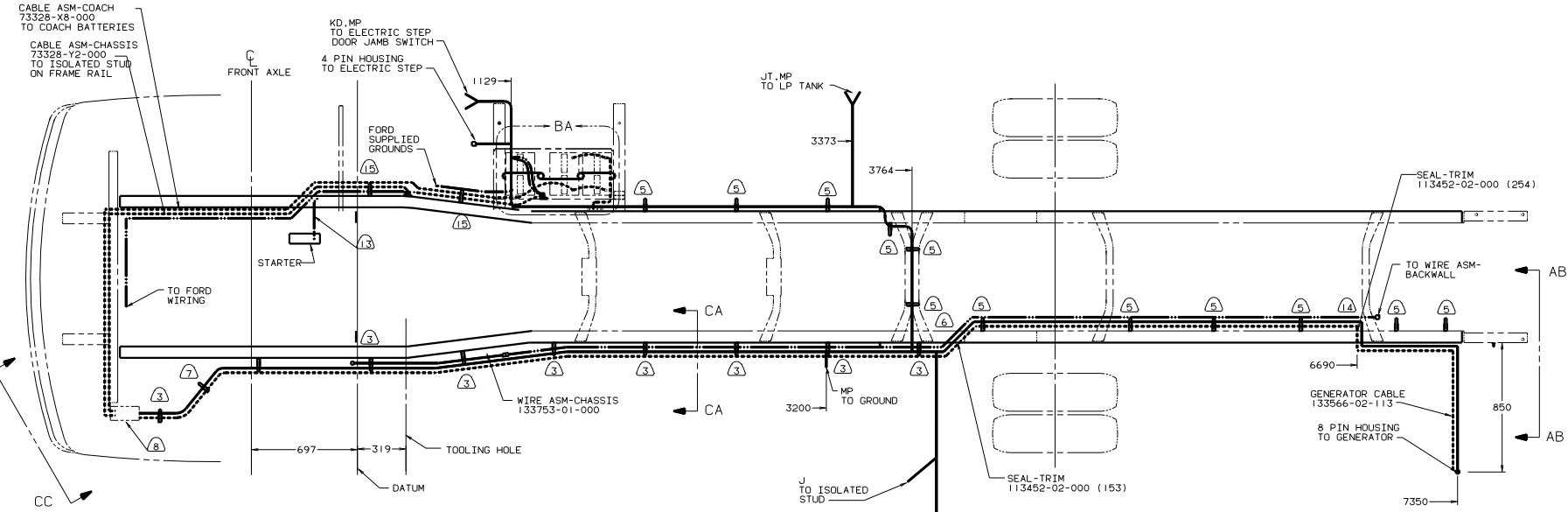
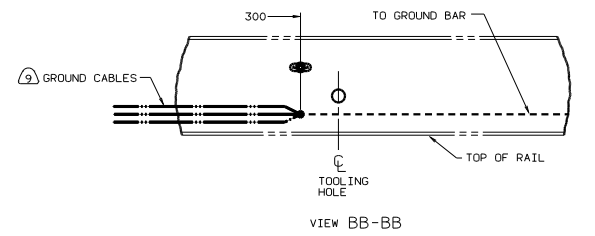
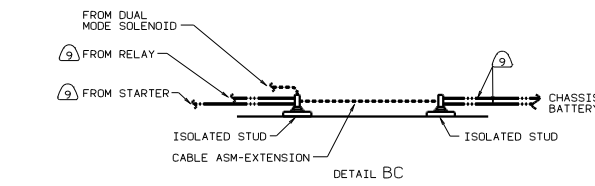
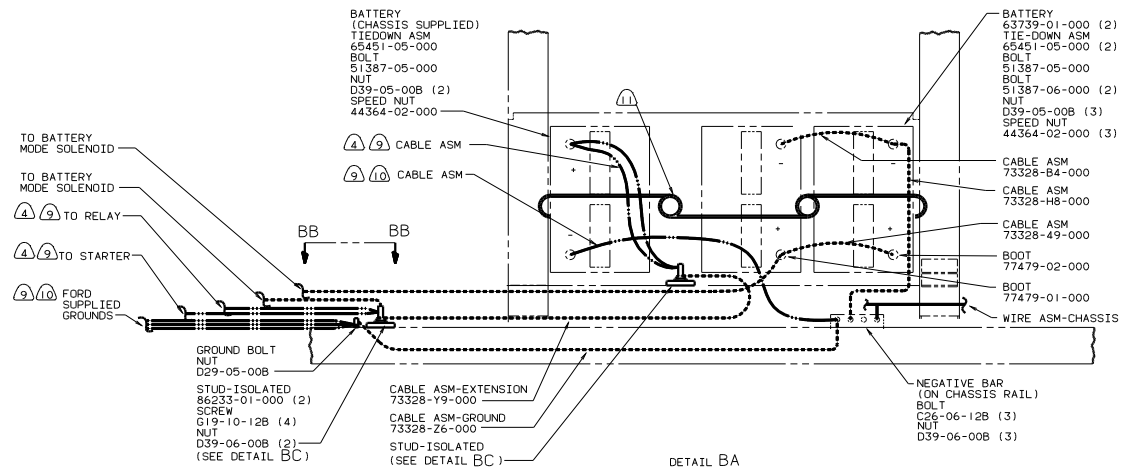
181 TPK 265

FOR ELECTRICAL TORQUE SPECIFICATIONS SEE DWG NO. 128783-01-000

WIRING INSTL-CHASSIS

SHEET 1 OF 3

REF: 128873-C 1



- (12) COVER EDGE OF HOLE THROUGH BATTERY BOX WITH TRIM-VINYL 72368-02-000.
- (11) USE TWO NUTS HERE TO ACCOUNT FOR BATTERY HEIGHT DIFFERENCE.
- (10) TRIM CABLE TO 500MM. ADD TERMINALS 8348-01-000(2).
- (9) SUPPLIED WITH CHASSIS.
- (8) SEE WIRING INSTL-FRONT END FOR ADDITIONAL INFORMATION.
- (7) COVER WITH CONDUIT 41953-09-000, 41953-10-000 & 41953-11-000 AS REQUIRED.
- (6) ROUTE WIRES AND CABLE OVER SPRING HANGER AND ON TOP OF CHASSIS RAIL AT THIS POINT. ATTACH TO FLOOR SUPPORT OVER AXLE.
- (5) CLAMP 10497-03-000, SCREW G39-08-12B.
- (4) CUT 14GA WIRE, 6 & 4GA CABLES 500 MM FROM BATTERY TERMINAL. ADD TERMINAL 8331-01-000(2) TO 4GA CABLES AND TERMINAL 8350-01-000(2) TO 14GA WIRES & 6GA CABLES. CONNECT TERMINALS TO ISOLATED STUDS AS SHOWN IN DETAIL P.
- (3) CLAMP 83610-01-000, SCREW G39-08-12B.

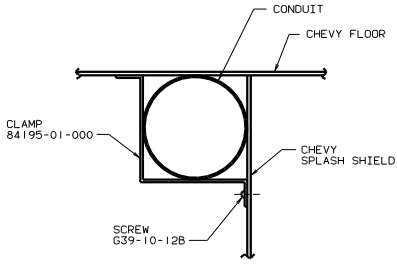
- (16) USE WITH DELUXE SOUND SYSTEM. (21V)
- (15) CLAMP 83609-01-000, SCREW G39-08-12B.
- (14) ROUTE WIRES & CABLE INSIDE CHASSIS RAIL AT THIS POINT & TO THE REAR.
- (13) BATTERY CABLE MUST BE INSTALLED TO STARTER MOTOR BEFORE ENGINE WIRING HARNESS AND ROUTED IN SUCH A MANNER AS TO PREVENT ANY POSSIBLE DEGRADATION FROM THE EXHAUST SYSTEM.

- (265) CODES/STANDARDS-CSA/CMVSS
- (16F) FORD CHASSIS 18,000#/V10 ENG
- (1B1) CODES/STANDARDS USA

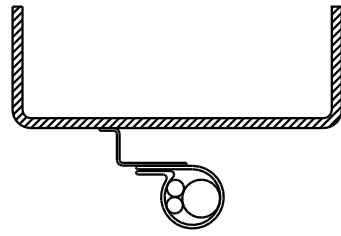
FOR ELECTRICAL TORQUE SPECIFICATIONS SEE DWG NO 128783-01-000

TITLE	WIRING INSTL-CHASSIS
TO THE SCALE SHOWN	1:1
SHEET	2 OF 3
DWG NO	133754

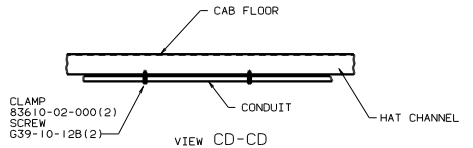
00 F32T



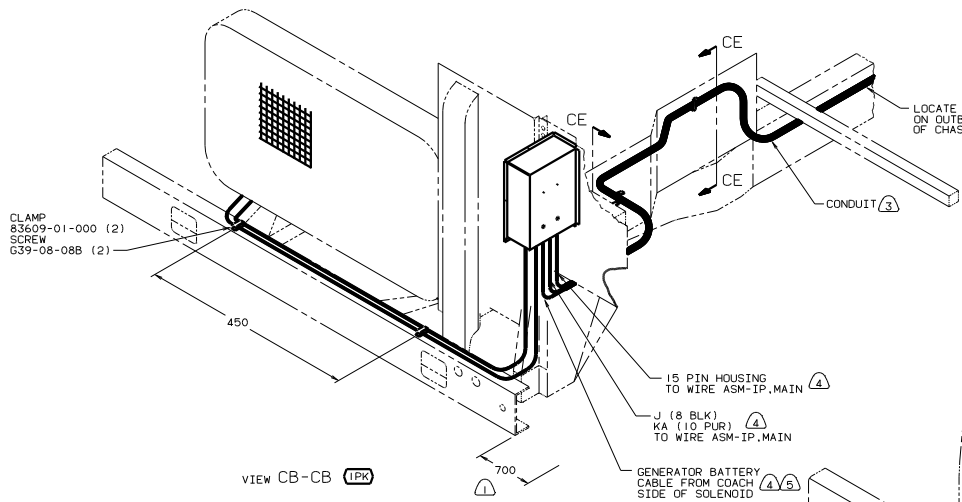
VIEW CE-CE



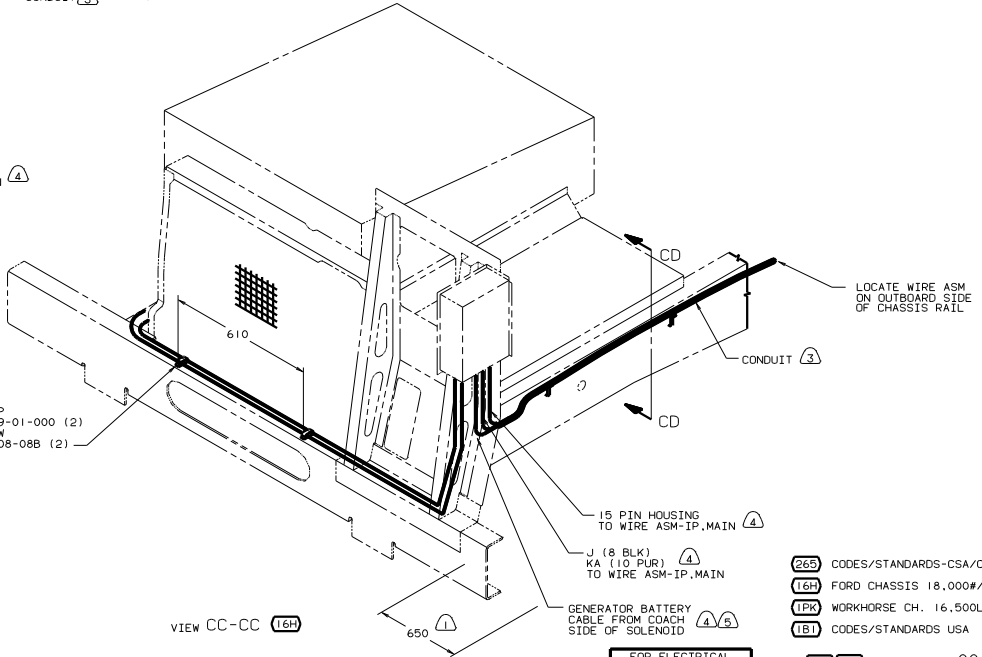
VIEW CA-CA



VIEW CD-CD



VIEW CB-CB (1PK)



VIEW CC-CC (16H)

- Ⓐ WITH DELUXE SOUND. (21V)
- Ⓐ CUT OFF EXCESS END OF WIRE TIE.
- Ⓑ CONNECT CABLES TO COACH SIDE OF BATTERY DISCONNECT WHEN BATTERY DISCONNECT IS USED.
- Ⓒ FOR ADDITIONAL INFORMATION SEE WIRING INSTALATION FRONT END.
- Ⓓ COVER WITH CONDUIT 41953-10-000 AND 41953-11-000 AS REQUIRED.
- Ⓔ SUPPLIED WITH CHASSIS.
- Ⓕ LAY BATTERY AND GENERATOR CABLES TO THIS DIMENSION FROM END OF CROSSMEMBER TO START INSTALLATION.

NOTES:

- (26S) CODES/STANDARDS-CSA/CMVSS
- (16H) FORD CHASSIS 18,000#/V10 ENG
- (1PK) WORKHORSE CH. 16,500LB. GVWR
- (1B1) CODES/STANDARDS USA

FOR ELECTRICAL TORQUE SPECIFICATIONS SEE DWG NO. 128783-01-000

181 26S 00 F32T
 TITLE: WIRING INSTL-CHASSIS
 SHEET 3 OF 3