



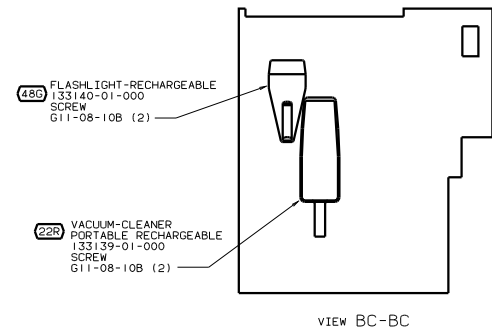
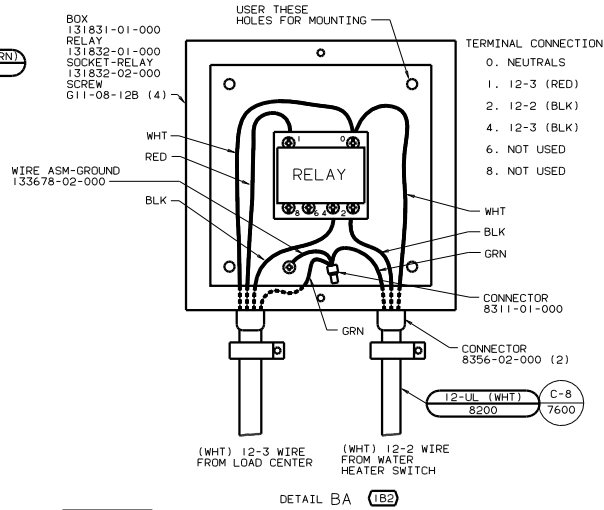
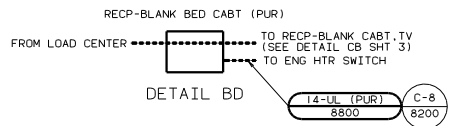
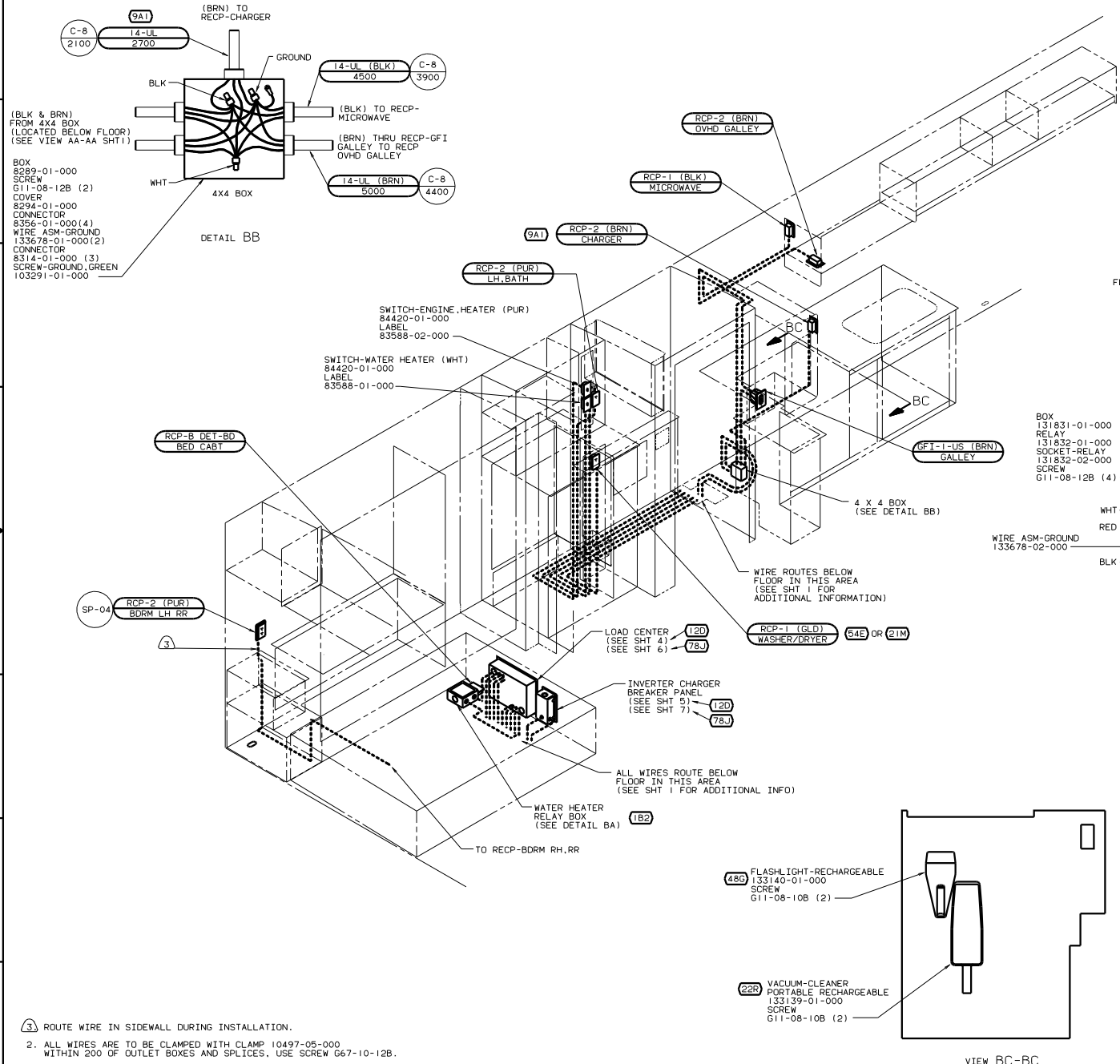
DANGER

Danger of electrical shock, burns or death. Always remove all power sources before attempting any repair, service or diagnostic work. Power can be present from shore power, generator, inverter or battery. All power sources must be disabled and secured before performing any service.



CAUTION

If you lack the skills, tools or equipment to perform diagnostic or repair work leave such work to an authorized Winnebago Industries dealer or other qualified shop.

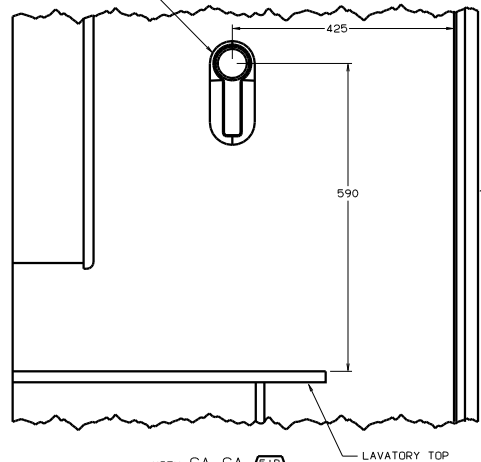
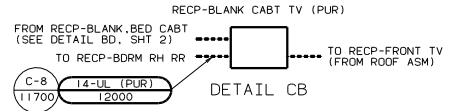
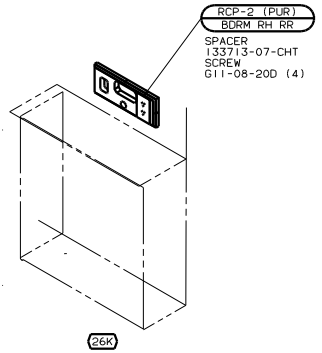
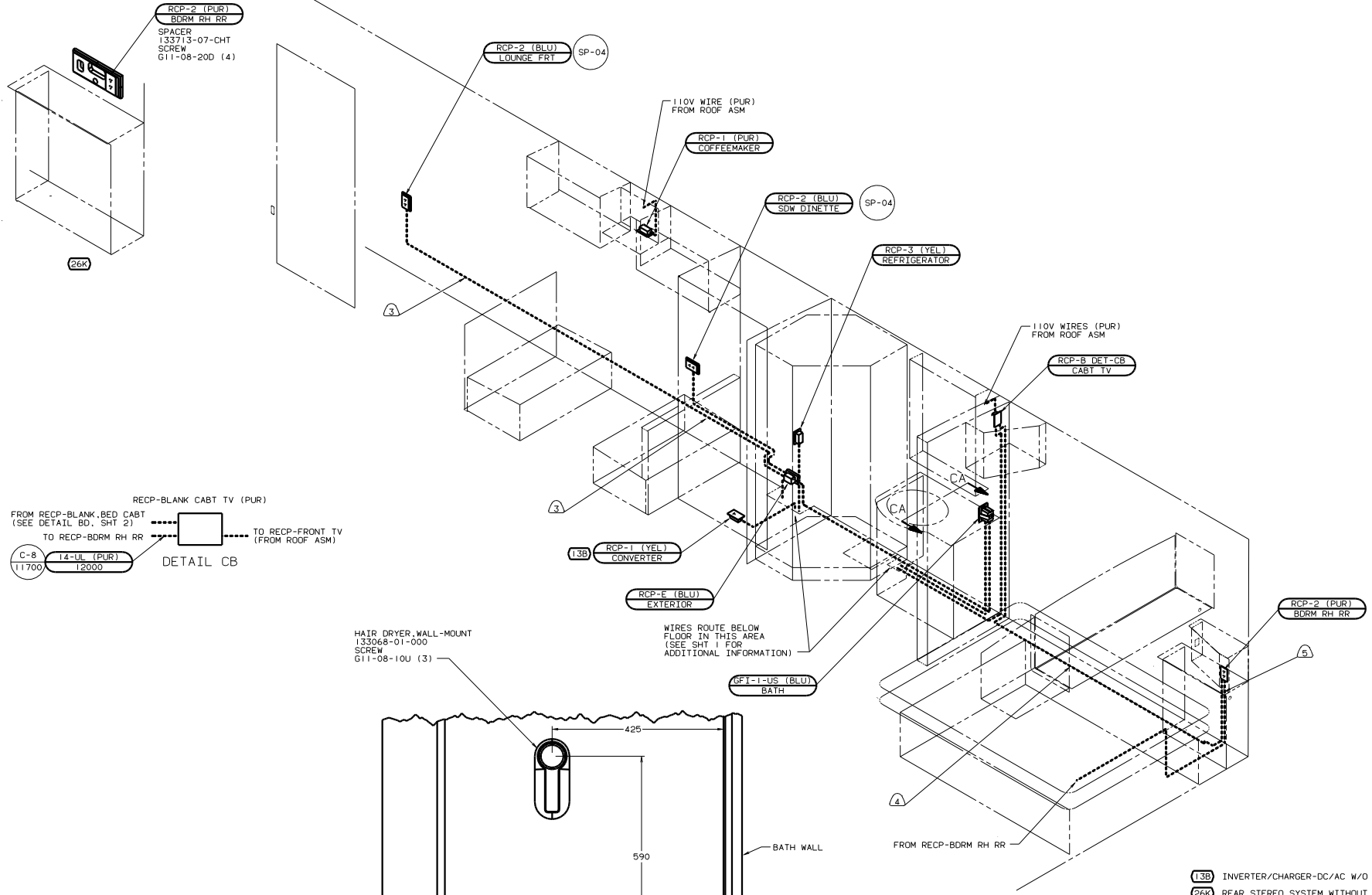


(BLK & BRN) FROM 4X4 BOX (LOCATED BELOW FLOOR) (SEE VIEW AA-AA SHT1)

BOX
8289-01-000
SCREW
G11-08-12B (2)
COVER
8294-01-000
CONNECTOR
8356-01-000(4)
WIRE ASM-GROUND
133678-01-000(2)
CONNECTOR
8314-01-000 (3)
SCREW-GROUND, GREEN
103291-01-000

- 3) ROUTE WIRE IN SIDEWALL DURING INSTALLATION.
2. ALL WIRES ARE TO BE CLAMPED WITH CLAMP 10497-05-000 WITHIN 200 OF OUTLET BOXES AND SPLICES. USE SCREW G67-10-12B.
1. ALL WIRE TO BE CLAMPED WITH CLAMP 10495-01-000 OR CLIP 80734-02-000 EVERY 700. USE SCREW G67-10-12B UNLESS OTHERWISE SPECIFIED.

- 21M WASHER/DRYER PREP
- 79J INVERTER/CHARGER-1,500 WATT
- 54E WASHER/DRYER
- 9A1 ACCESSORY PACKAGE
- 480 FLASHLIGHT
- 22B VACUUM CLEANER-PORTABLE
- 78J ELECTRICAL SYSTEM-50 AMP
- 12D ELECTRICAL SYSTEM 30 AMP
- 1B2 WTR HTR-10GAL/ELEC/LP/MTR/RAID
- 1B1 CODES/STANDARDS USA



- ⑤ ROUTE WIRE IN SIDEWALL DURING INSTALLATION.
- ④ ROUTE WIRE IN FLOOR DURING INSTALLATION.
- ③ WIRE ROUTED IN SIDEWALL.

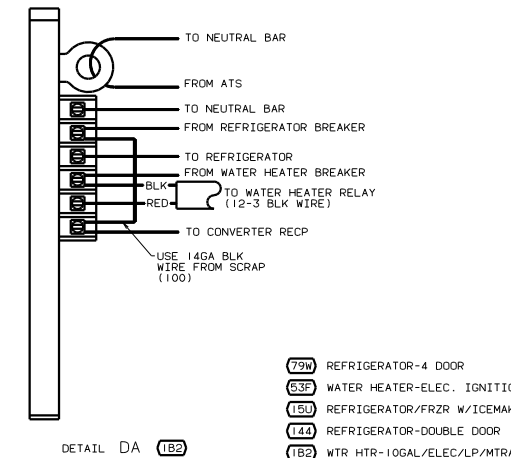
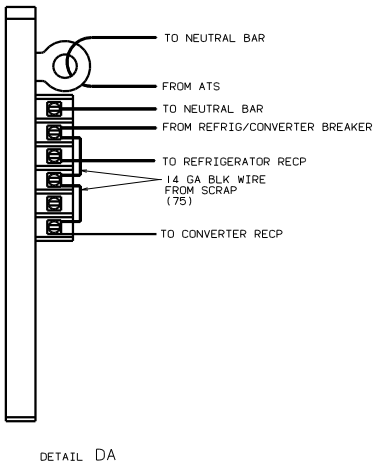
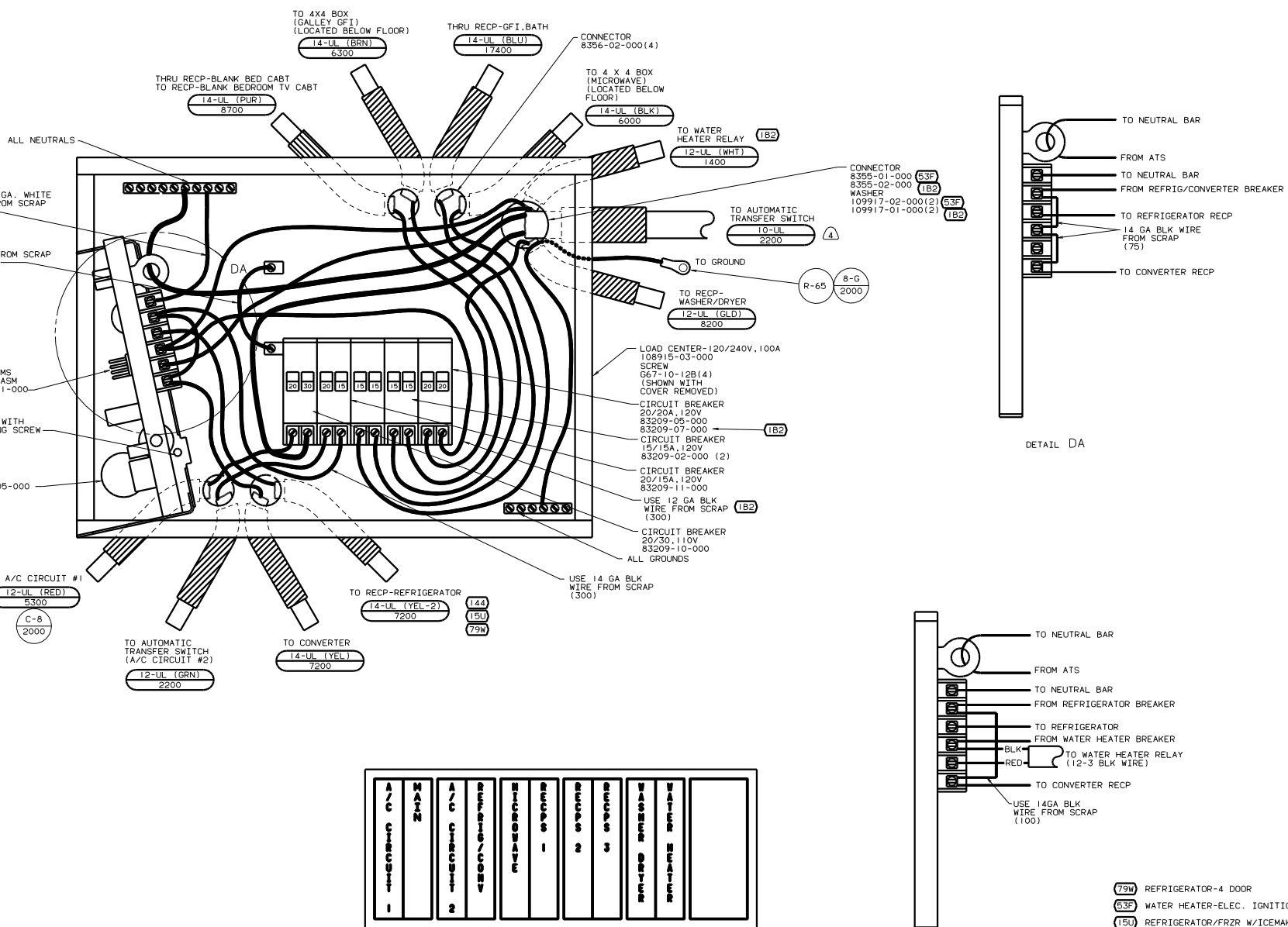
2. ALL WIRES ARE TO BE CLAMPED WITH CLAMP 10497-05-000 WITHIN 200 OF OUTLET BOXES AND SPLICES. USE SCREW G67-10-12B.

1. ALL WIRE TO BE CLAMPED WITH CLAMP 10495-01-000 OR CLIP 80734-02-000 EVERY 700. USE SCREW G67-10-12B UNLESS OTHERWISE SPECIFIED.

- 13B INVERTER/CHARGER-DC/AC W/O
- 26K REAR STEREO SYSTEM WITHOUT
- 79J INVERTER/CHARGER-1,500 WATT
- 51B HAIR DRYER
- 78J ELECTRICAL SYSTEM-50 AMP
- 21M WASHER/DRYER PREP
- 12D ELECTRICAL SYSTEM 30 AMP
- 1B2 WTR HTR-10GAL/ELEC/LP/MTR/TRAID
- 1B1 CODES/STANDARDS USA

00 P36LD 1B1 12D 78J

| | |
|------------------------|-------------------------------|
| FILE | WIRING INSTL-BODY (RH30/50US) |
| NO. THIS SCALE DRAWING | 1 |
| SHEET | 3 OF 19 |
| DWG NO | 133719 |



| | | | | | | | | | | |
|----------------|------|----------------|-------------|-----------|--------|--------|--------|--------------|--------------|--|
| A/C CIRCUIT #1 | MAIN | A/C CIRCUIT #2 | REFRIG/CONV | MICROWAVE | RECP 1 | RECP 2 | RECP 3 | WASHER DRYER | WATER HEATER | |
|----------------|------|----------------|-------------|-----------|--------|--------|--------|--------------|--------------|--|

INSTALL LABEL ON FRONT PANEL BELOW BREAKERS BETWEEN MOUNTING HOLES

LABEL 95721-31-000

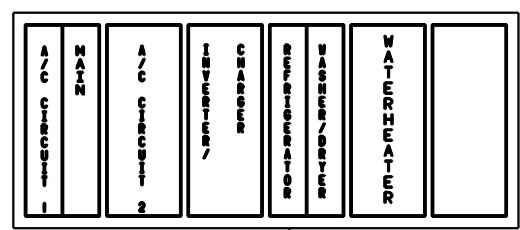
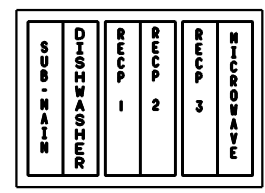
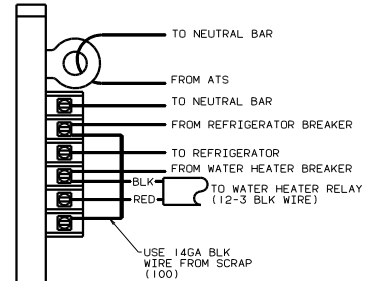
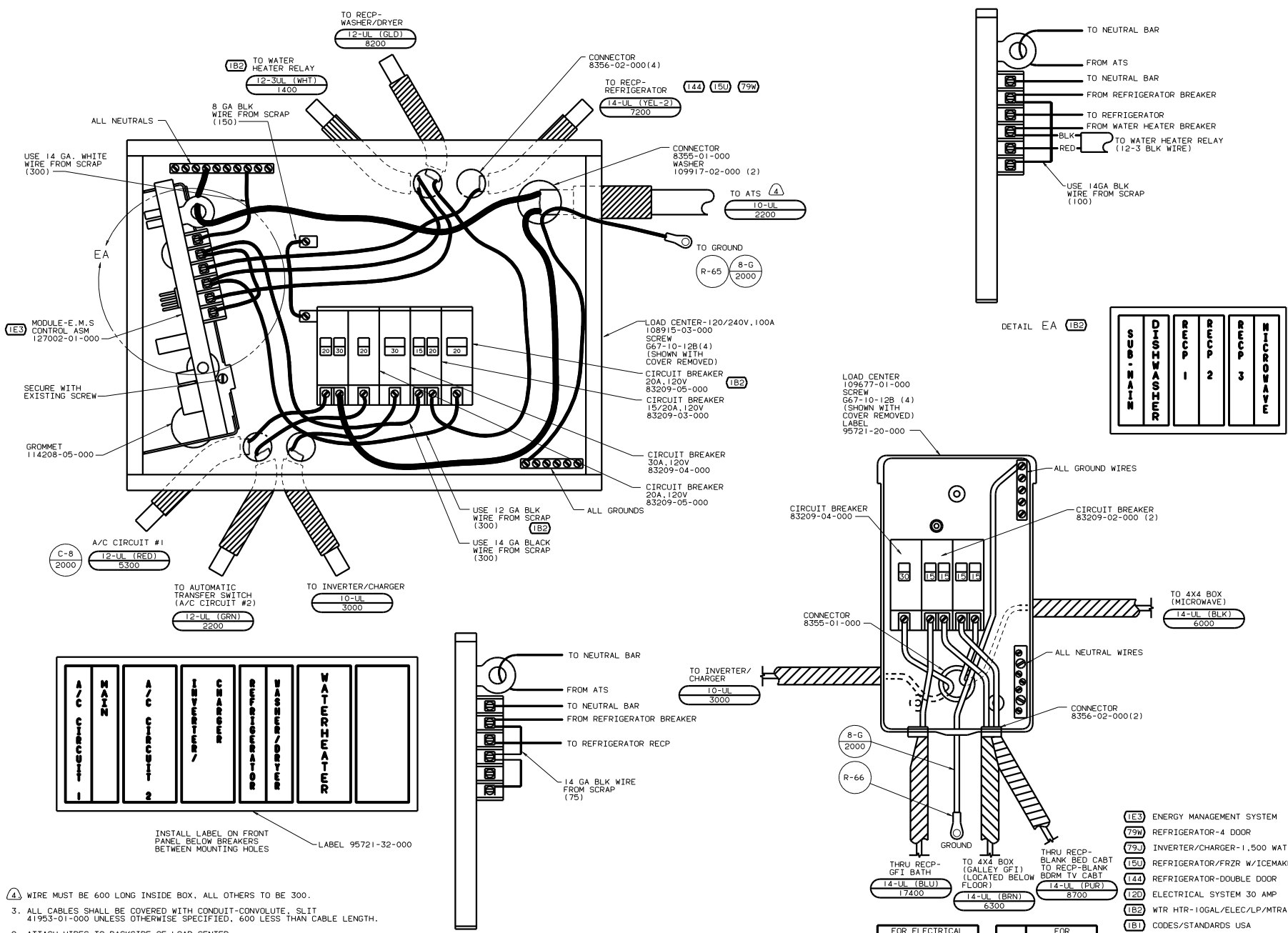
4. WIRE MUST BE 600 LONG INSIDE BOX, ALL OTHERS TO BE 300.
3. ALL CABLES SHALL BE COVERED WITH CONDUIT-CONVOLUTE, SLIT 41953-01-000 UNLESS OTHERWISE SPECIFIED, 600 LESS THAN CABLE LENGTH.
2. ATTACH WIRES TO BACKSIDE OF LOAD CENTER, USE EXISTING HOLES AND TIE-WIRE 116673-01-000.
1. ALL GROUND WIRES TO BE COVERED WITH TUBING 8041-02-000.

FOR ELECTRICAL TORQUE SPECIFICATIONS SEE DWG NO. 128783-01-000

FOR ELECTRICAL CALLOUTS SEE DWG NO. 121339-01-000

- (79W) REFRIGERATOR-4 DOOR
- (53F) WATER HEATER-ELEC. IGNITION
- (15U) REFRIGERATOR/FRZR W/ICEMAKER
- (144) REFRIGERATOR-DOUBLE DOOR
- (1B2) WTR HTR-10GAL/ELEC/LP/MTR/1D
- (1E3) ENERGY MANAGEMNT SYSTEM
- (1B1) CODES STANDARDS/USA
- (120) ELECTRICAL SYSTEM 30 AMP

00 P36LD (1B1) (120) (1E3)



INSTALL LABEL ON FRONT PANEL BELOW BREAKERS BETWEEN MOUNTING HOLES

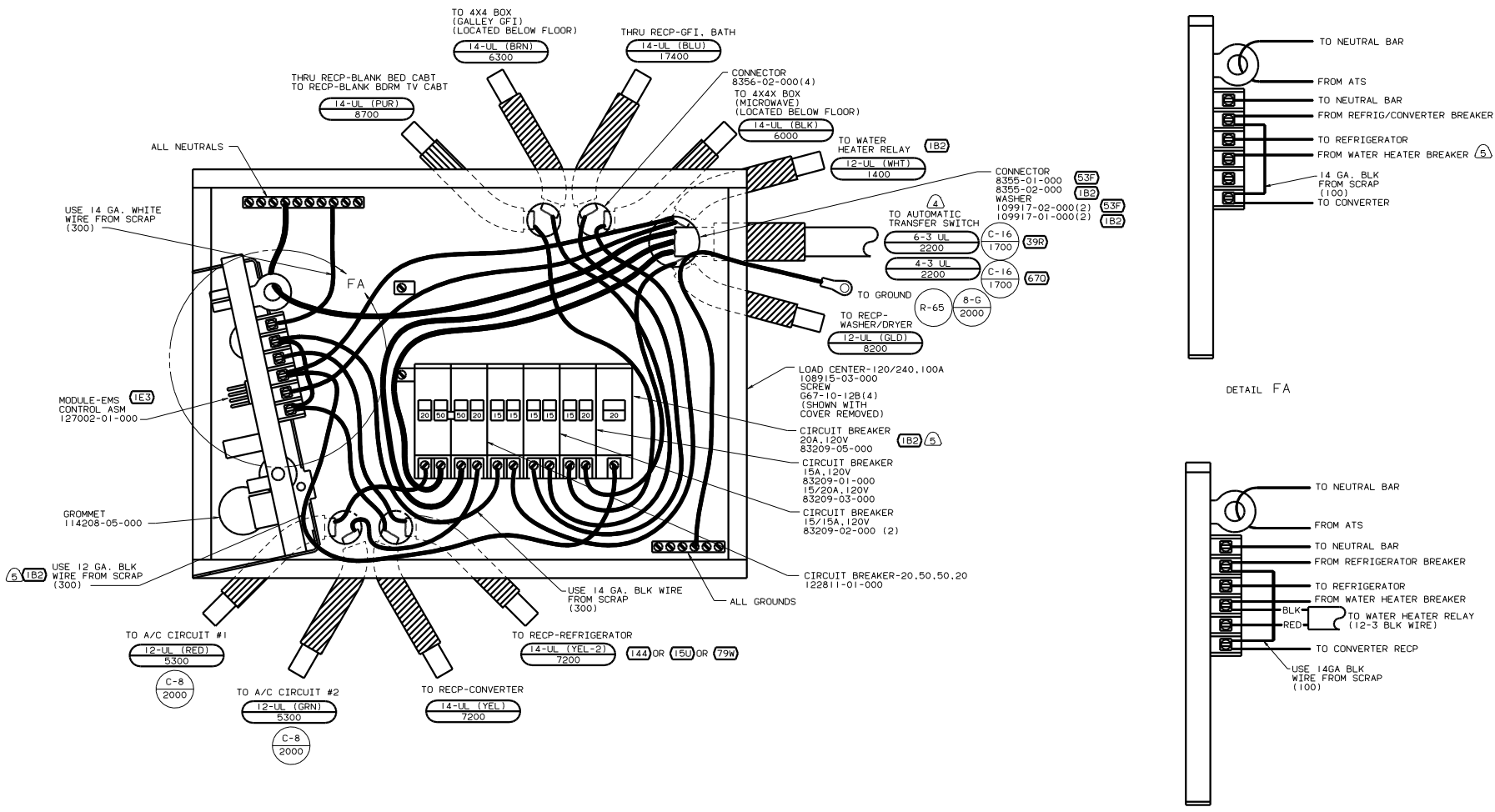
LABEL 95721-32-000

4. WIRE MUST BE 600 LONG INSIDE BOX, ALL OTHERS TO BE 300.
3. ALL CABLES SHALL BE COVERED WITH CONDUIT-CONVOLUTE, SLIT 41953-01-000 UNLESS OTHERWISE SPECIFIED. 600 LESS THAN CABLE LENGTH.
2. ATTACH WIRES TO BACKSIDE OF LOAD CENTER. USE EXISTING HOLES AND TIE-WIRE 116673-01-000.
1. ALL GROUND WIRES TO BE COVERED WITH TUBING 8041-02-000.

FOR ELECTRICAL TORQUE SPECIFICATIONS SEE DWG NO. 128783-01-000

FOR ELECTRICAL CALLOUTS SEE DWG NO. 121339-01-000

- 1E3 ENERGY MANAGEMENT SYSTEM
- 79N REFRIGERATOR-4 DOOR
- 72J INVERTER/CHARGER-1,500 WATT
- 15U REFRIGERATOR/FRZR W/ICEMAKER
- 144 REFRIGERATOR-DOUBLE DOOR
- 120 ELECTRICAL SYSTEM 30 AMP
- 1B2 WTR HTR-10GAL/ELEC/LP/MTR/DAID
- 1B1 CODES/STANDARDS USA
- 00 P36LD (1B1) (120) (79J)



| | | | | | | | |
|----------------|-------|--------------|-------------|----------|----------|----------|--------------|
| A/C CIRCUIT #1 | WATER | WASHER/DRYER | REFRIG/CONV | REFRIG 1 | REFRIG 2 | REFRIG 3 | WATER HEATER |
|----------------|-------|--------------|-------------|----------|----------|----------|--------------|

LABEL 95721-33-000

INSTALL LABEL ON FRONT PANEL BELOW BREAKERS BETWEEN MOUNTING HOLES

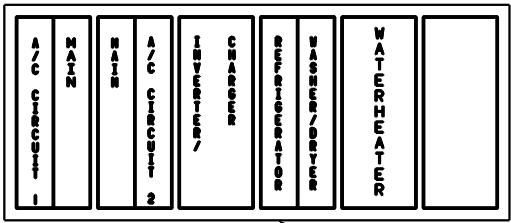
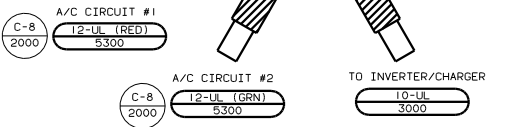
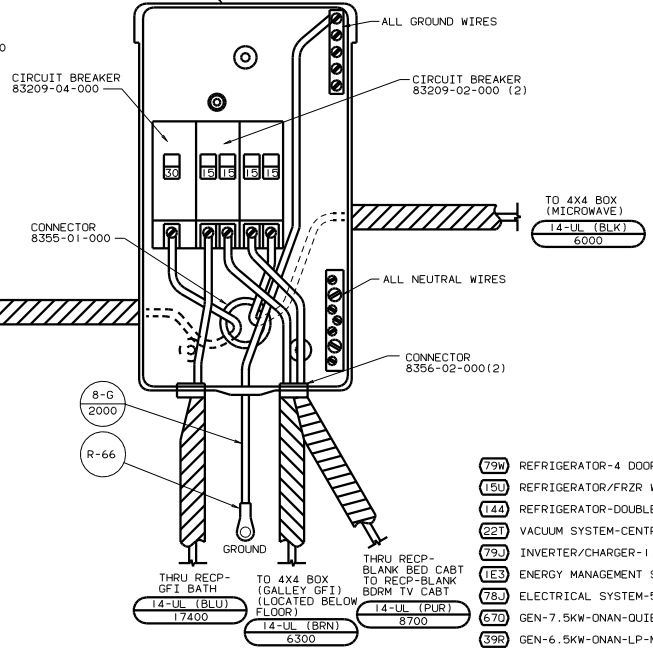
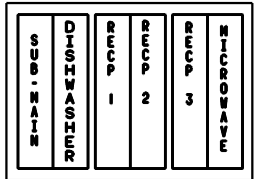
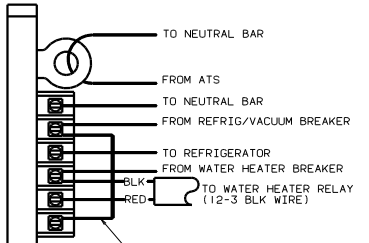
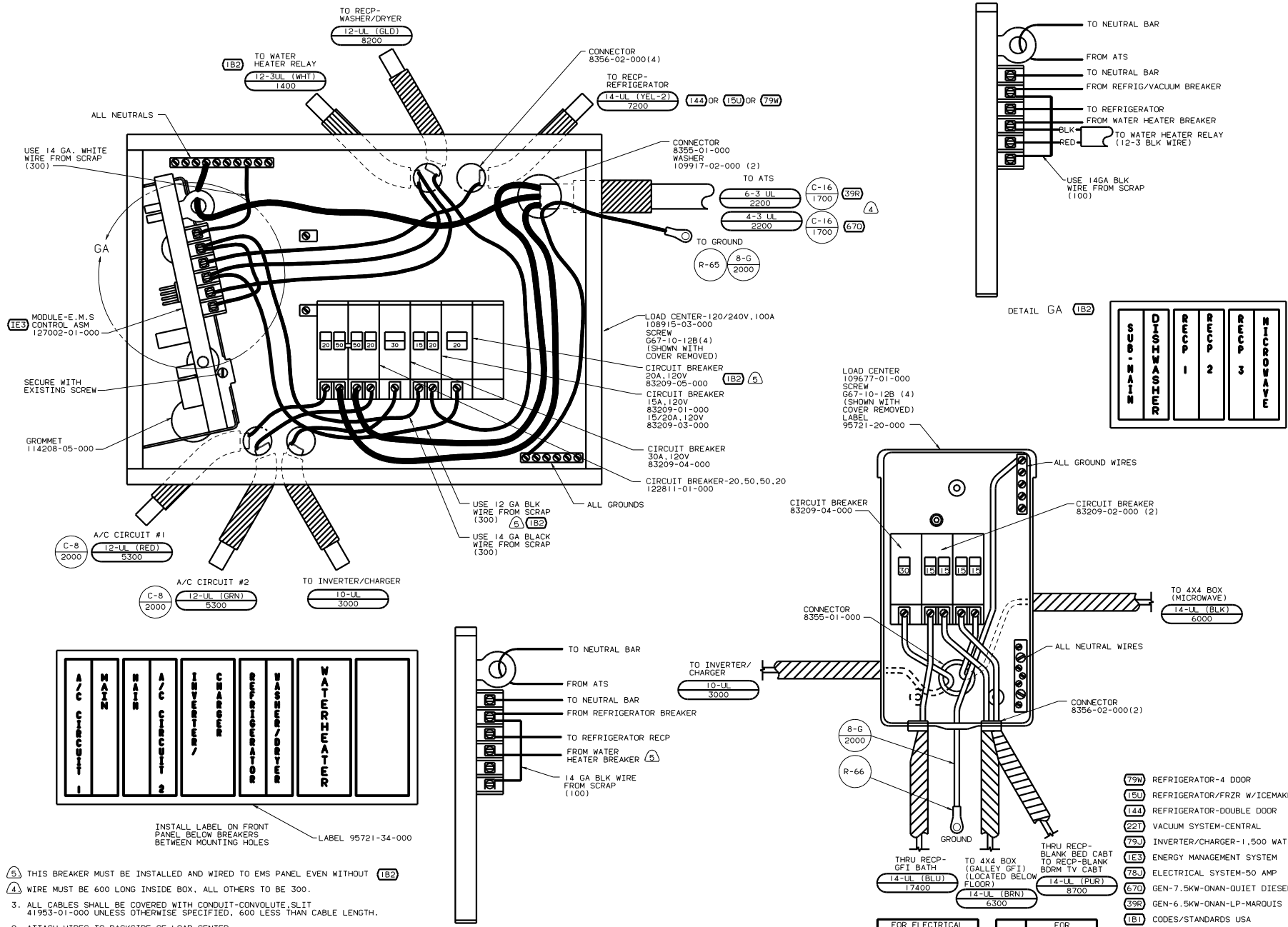
- THIS BREAKER MUST BE INSTALLED AND WIRED TO EMS EVEN WITHOUT
- WIRE MUST BE 600 LONG INSIDE BOX, ALL OTHERS TO BE 300.
- ATTACH WIRES TO BACKSIDE OF LOAD CENTER, USE EXISTING HOLES AND TIE-WIRE 116673-01-000.
- ALL GROUND WIRES TO BE COVERED WITH TUBING 8041-02-000.

- REFRIGERATOR-4 DOOR
- REFRIGERATOR/FRZR W/ICEMAKER
- REFRIGERATOR-DOUBLE DOOR
- GEN-7.5KW-ONAN-QUIET DIESEL
- GEN-6.5KW-ONAN-LP-MARQUIS
- WATER HEATER-ELEC. IGNITION
- REFRIGERATOR/FRZR W/ICEMAKER
- REFRIGERATOR-DOUBLE DOOR
- WTR HTR-10GAL/ELEC/LP/MTR/RAID
- ELECTRICAL SYSTEM - 50 AMP
- ENERGY MANEMNT SYSTEM
- CODES STANDARDS/USA

FOR ELECTRICAL TORQUE SPECIFICATIONS SEE DWG NO. 128783-01-000

FOR ELECTRICAL CALLOUTS SEE DWG NO. 121339-01-000

00 P36LD (1B) (E3) (78U) WIRING INSTL-BODY,110V(50LCUS) SHEET 6 OF 19



INSTALL LABEL ON FRONT PANEL BELOW BREAKERS BETWEEN MOUNTING HOLES
LABEL 95721-34-000

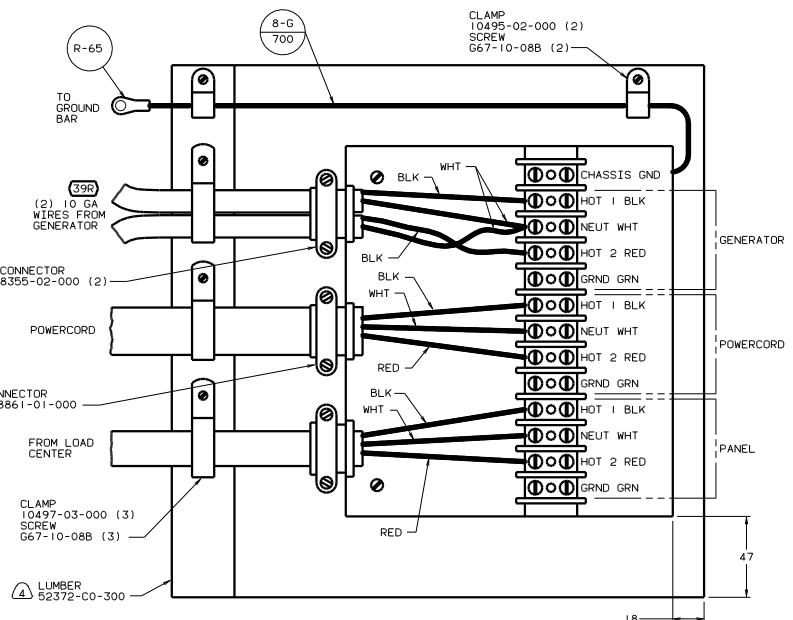
- (A) THIS BREAKER MUST BE INSTALLED AND WIRED TO EMS PANEL EVEN WITHOUT (1B2)
- (A) WIRE MUST BE 600 LONG INSIDE BOX, ALL OTHERS TO BE 300.
- 3. ALL CABLES SHALL BE COVERED WITH CONDUIT-CONVOLUTE, SLIT 41953-01-000 UNLESS OTHERWISE SPECIFIED. 600 LESS THAN CABLE LENGTH.
- 2. ATTACH WIRES TO BACKSIDE OF LOAD CENTER USE EXISTING HOLES AND TIE-WIRE 116673-01-000.
- 1. ALL GROUND WIRES TO BE COVERED WITH TUBING 8041-02-000.

FOR ELECTRICAL TORQUE SPECIFICATIONS SEE DWG NO. 128783-01-000

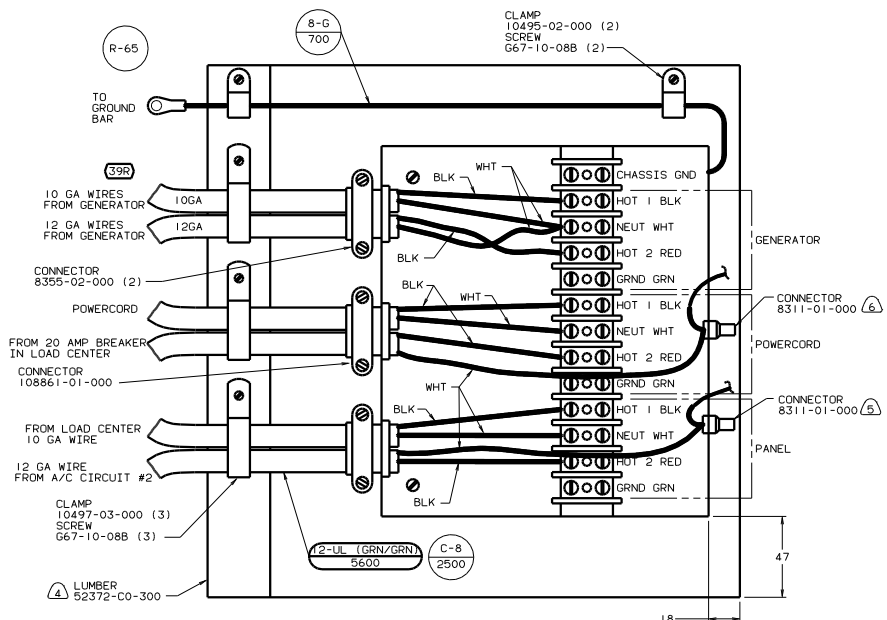
FOR ELECTRICAL CALLOUTS SEE DWG NO. 121339-01-000

- (79W) REFRIGERATOR-4 DOOR
- (15U) REFRIGERATOR/FRZR W/ICEMAKER
- (144) REFRIGERATOR-DOUBLE DOOR
- (22T) VACUUM SYSTEM-CENTRAL
- (72J) INVERTER/CHARGER-1,500 WATT
- (1E3) ENERGY MANAGEMENT SYSTEM
- (78J) ELECTRICAL SYSTEM-50 AMP
- (67D) GEN-7.5KW-ONAN-QUIET DIESEL
- (39R) GEN-6.5KW-ONAN-LP-MARQUIS
- (1B1) CODES/STANDARDS USA

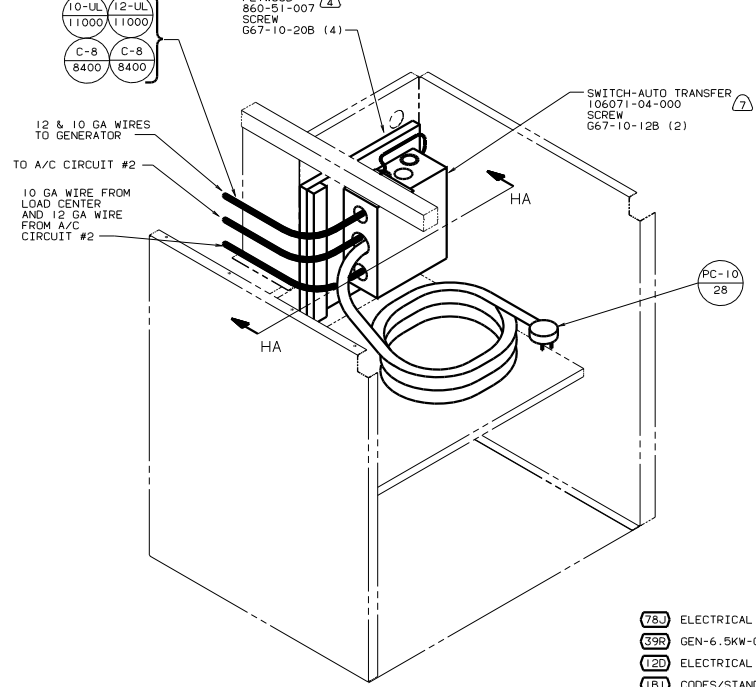
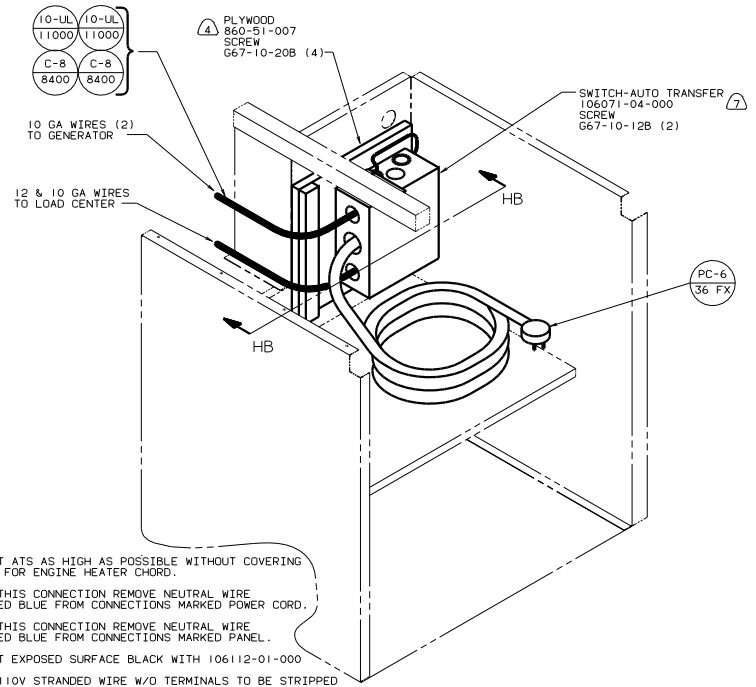
00 P36LD (1B1) (78J) (79J)
WIRING INSTL-BODY (50LCINVSU)
SHEET 7 OF 19
133719



VIEW HB-HB

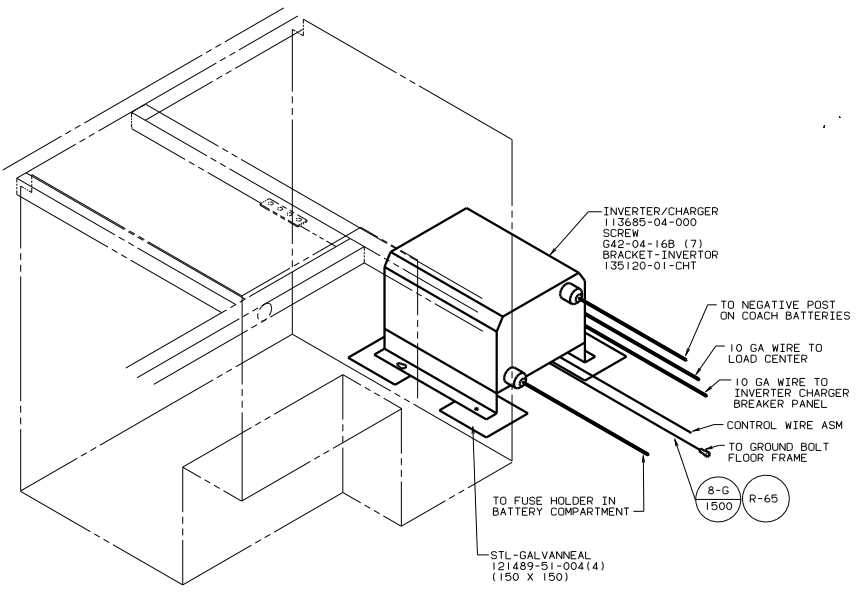


VIEW HA-HA

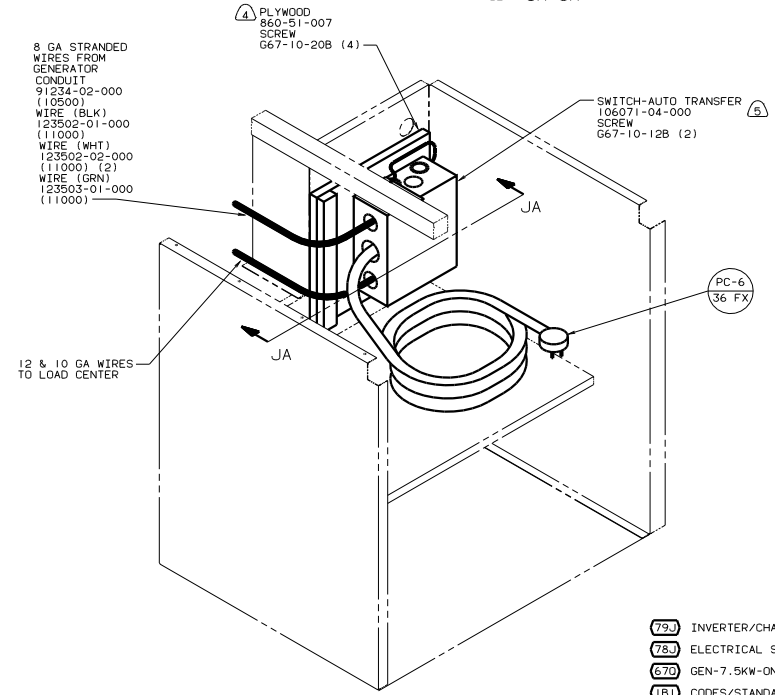
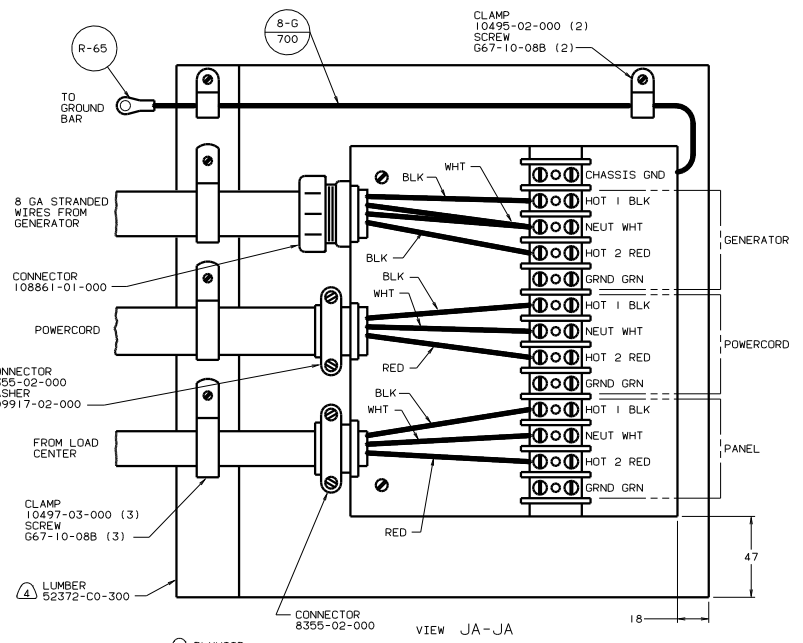


- (7) MOUNT ATS AS HIGH AS POSSIBLE WITHOUT COVERING HOLE FOR ENGINE HEATER CHORD.
- (6) FOR THIS CONNECTION REMOVE NEUTRAL WIRE MARKED BLUE FROM CONNECTIONS MARKED POWER CORD.
- (5) FOR THIS CONNECTION REMOVE NEUTRAL WIRE MARKED BLUE FROM CONNECTIONS MARKED PANEL.
- (4) PAINT EXPOSED SURFACE BLACK WITH 106112-01-000
- 3. ALL 110V STRANDED WIRE W/O TERMINALS TO BE STRIPPED 10MM AND SOLDER DIPPED.
- 2. GROUND WIRES NOT SHOWN FOR CLARITY.
- 1. ALL WIRES TO BE CLAMPED WITH IN 200 OF BOX.

- (78J) ELECTRICAL SYSTEM-50 AMP
- (39R) GEN-6.5KW-ONAN-LP-MARQUIS
- (12D) ELECTRICAL SYSTEM 30 AMP
- (1B1) CODES/STANDARDS USA



(79J) (A)

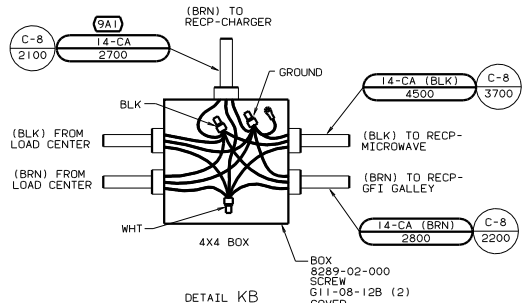


(670) (78J)

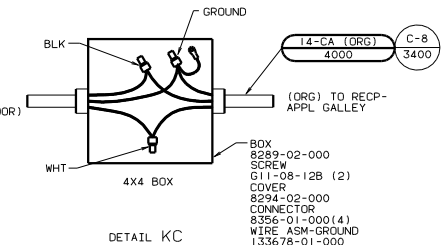
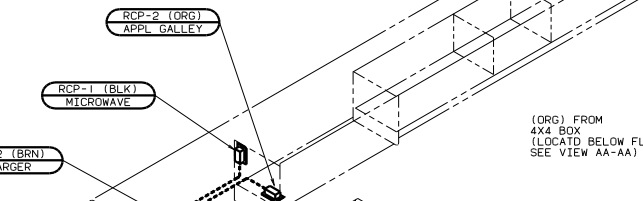
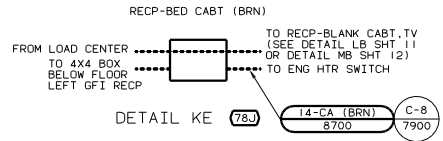
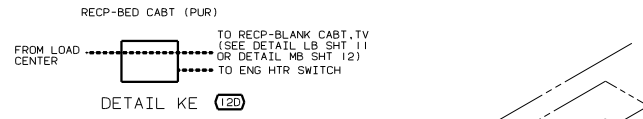
- (5) MOUNT AT'S AS HIGH AS POSSIBLE WITHOUT COVERING HOLE FOR ENGINE HEATER CHORD.
- (4) PAINT EXPOSED SURFACE BLACK WITH 106112-01-000
3. ALL 110V STRANDED WIRE W/O TERMINALS TO BE STRIPPED 10MM AND SOLDER DIPPED.
2. GROUND WIRES NOT SHOWN FOR CLARITY.
1. ALL WIRES TO BE CLAMPED WITH IN 200 OF BOX.

- (79J) INVERTER/CHARGER-1,500 WATT
- (78J) ELECTRICAL SYSTEM-50 AMP
- (670) GEN-7.5KW-QNAN-QUIET DIESEL
- (1B1) CODES/STANDARDS USA

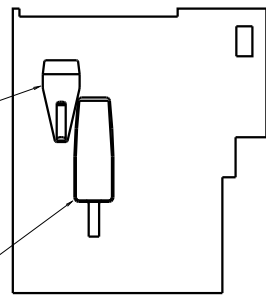
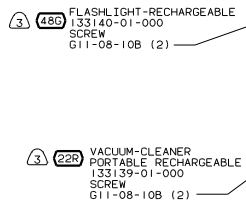
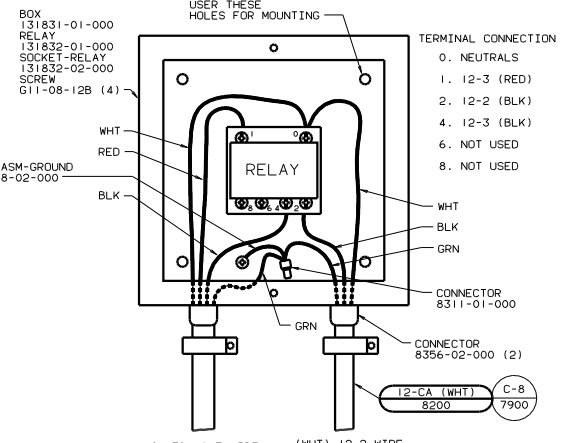
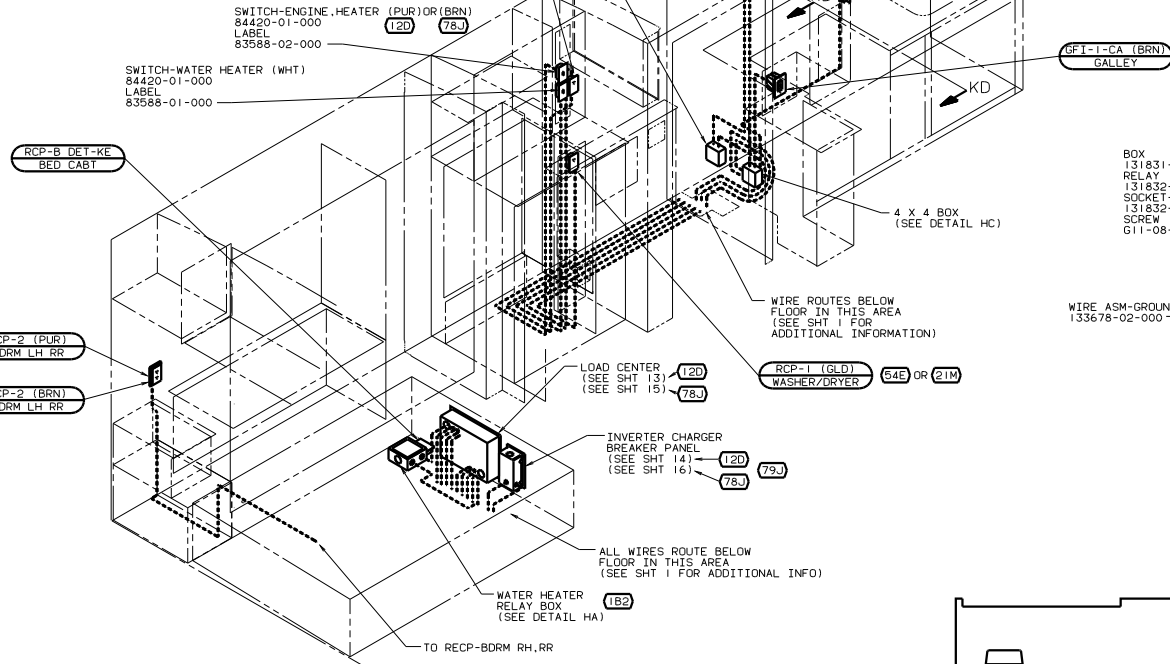
| | |
|------------------------------------|--------------|
| 00 P36LD (1B1) | |
| TITLE WIRING INSTL-BODY(ATS US) | |
| NO. OF SHEETS | TOTAL SHEETS |
| 3 OF 19 | 16 |
| 133719 | |



- BOX 8289-02-000
- SCREW G11-08-12B (2)
- COVER 8294-02-000
- CONNECTOR 8356-01-000(4)
- WIRE ASM-GROUND 133678-01-000
- CONNECTOR 8314-01-000 (3)
- SCREW-GROUND, GREEN 103291-01-000

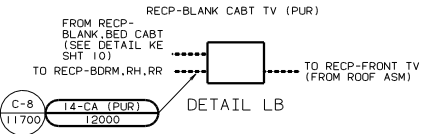
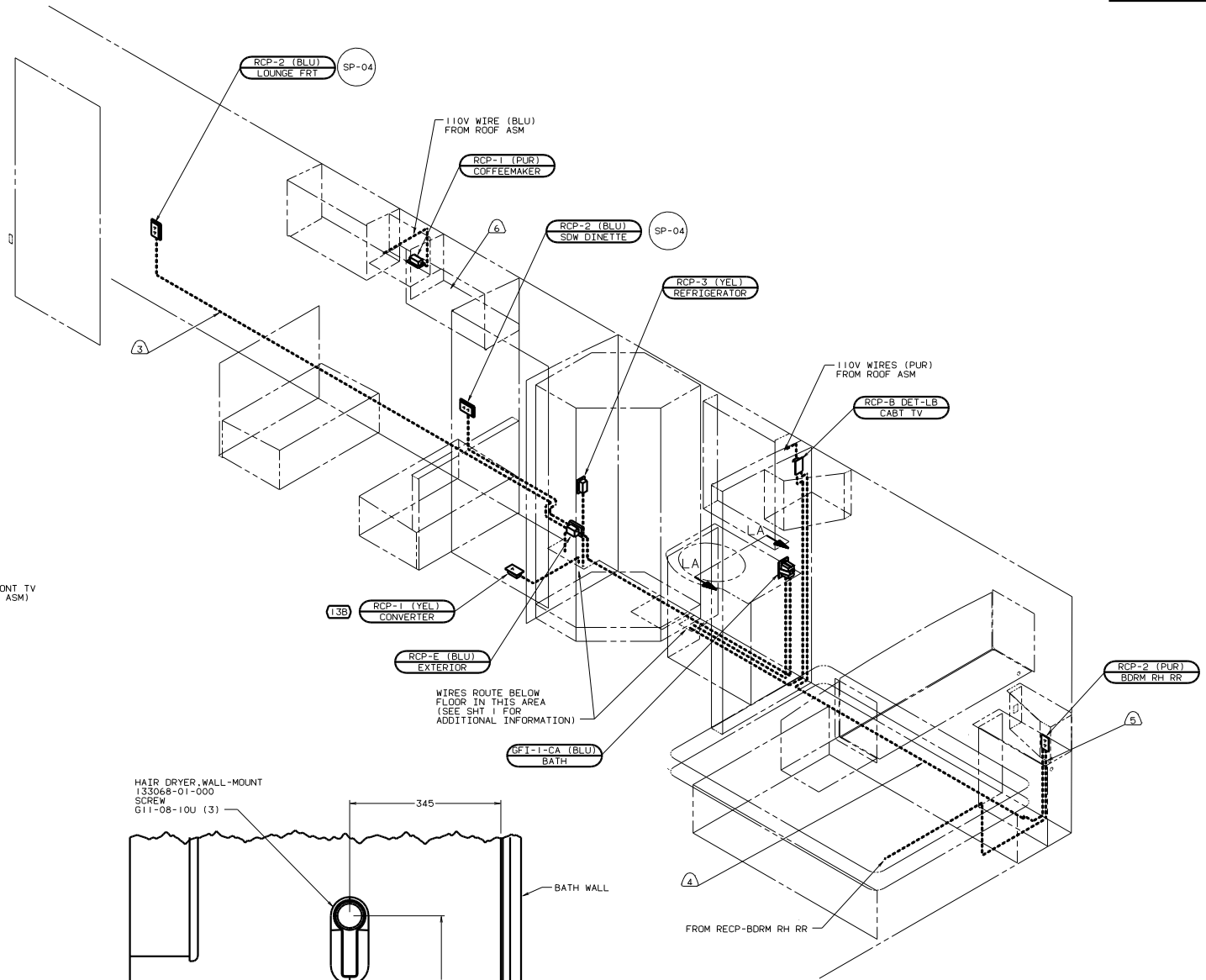
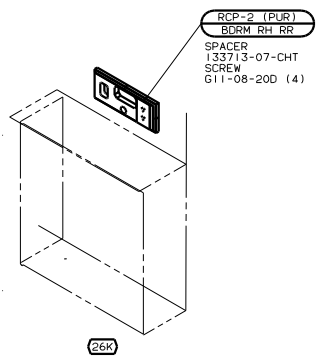


- BOX 8289-02-000
- SCREW G11-08-12B (2)
- COVER 8294-02-000
- CONNECTOR 8356-01-000(4)
- WIRE ASM-GROUND 133678-01-000
- CONNECTOR 8311-01-000 (3)
- SCREW-GROUND, GREEN 103291-01-000



- 21M WASHER/DRYER PREP
- 54E WASHER/DRYER
- 79J INVERTER/CHARGER-1.500 WATT
- 9A1 ACCESSORY PACKAGE
- 48B FLASHLIGHT
- 22B VACUUM CLEANER-PORTABLE
- 78J ELECTRICAL SYSTEM-50 AMP
- 12D ELECTRICAL SYSTEM 30 AMP
- 1B2 WTR HTR-10GAL/ELEC/LP/MTR/RAID
- 265 CODES/STANDARDS-CSA/CMVSS

- 3 TO BE MOUNTED WITH HANDLE POINTING DOWN.
- 2. ALL WIRES ARE TO BE CLAMPED WITH CLAMP 10497-05-000 WITHIN 200 OF OUTLET BOXES AND SPLICES. USE SCREW G67-10-12B.
- 1. ALL WIRE TO BE CLAMPED WITH CLAMP 10495-01-000 OR CLIP 80734-02-000 EVERY 700. USE SCREW G67-10-12B UNLESS OTHERWISE SPECIFIED.



- (5) ROUTE WIRE IN SIDEWALL DURING INSTALLATION.
- (4) ROUTE WIRE IN FLOOR DURING INSTALLATION.
- (3) WIRE ROUTED IN SIDEWALL.

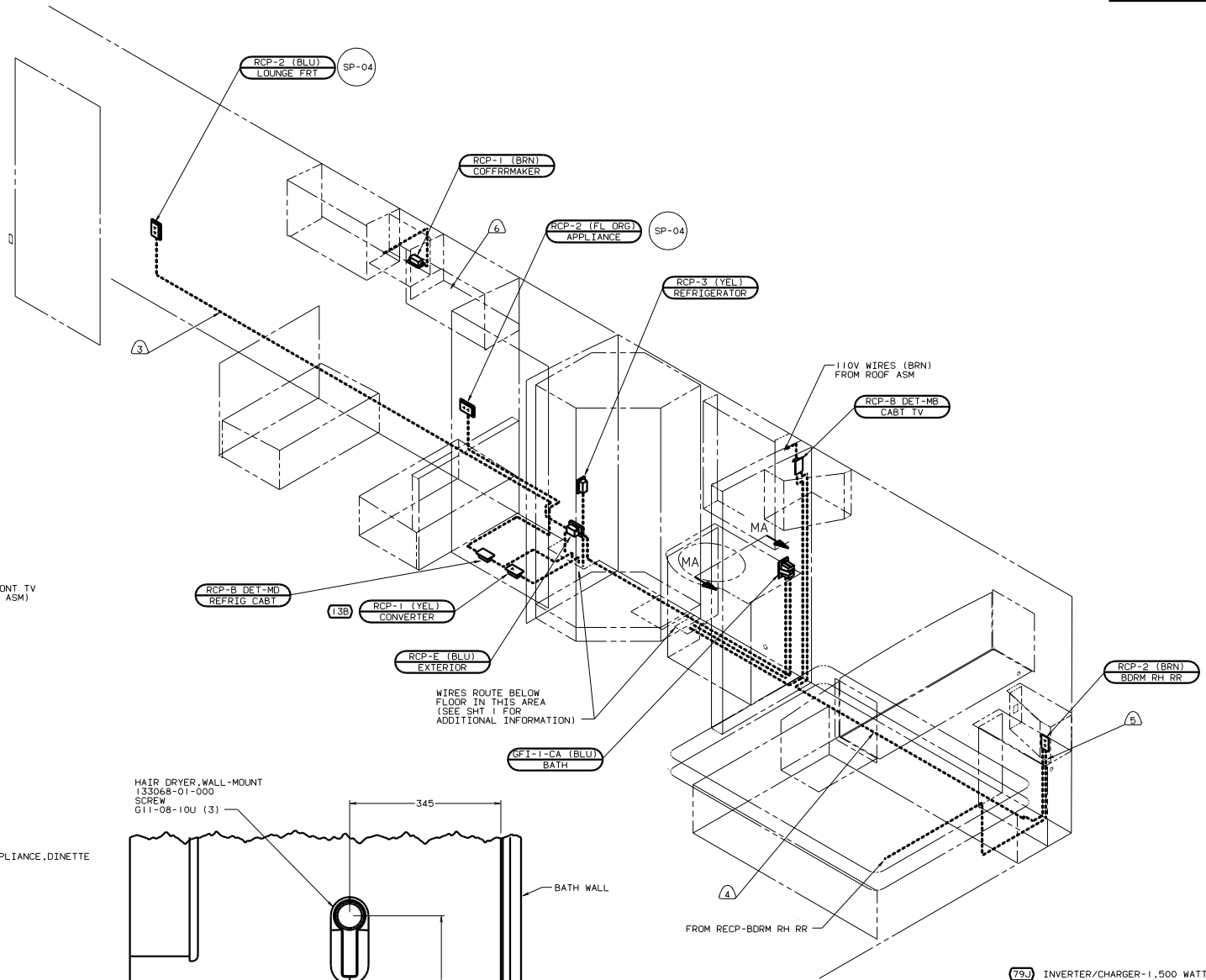
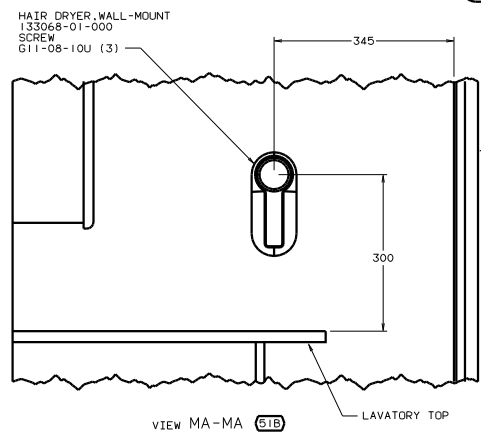
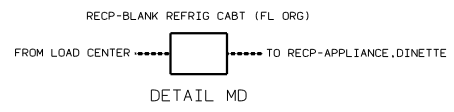
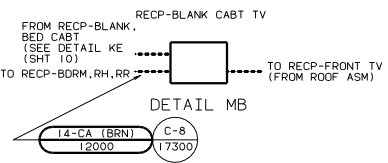
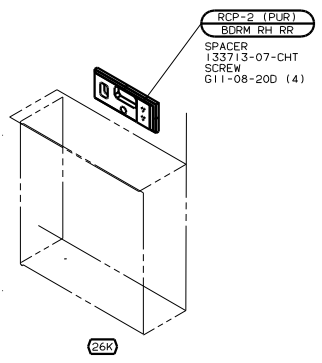
2. ALL WIRES ARE TO BE CLAMPED WITH CLAMP 10497-05-000 WITHIN 200 OF OUTLET BOXES AND SPLICES. USE SCREW G67-10-12B.

1. ALL WIRE TO BE CLAMPED WITH CLAMP 10495-01-000 OR CLIP 80734-02-000 EVERY 700. USE SCREW G67-10-12B UNLESS OTHERWISE SPECIFIED.

- (13B) INVERTER/CHARGER-DC/AC W/O
- (79J) INVERTER/CHARGER-1.500 WATT
- (26K) REAR STEREO SYSTEM WITHOUT
- (51B) HAIR DRYER
- (21M) WASHER/DRYER PREP
- (12D) ELECTRICAL SYSTEM 30 AMP
- (182) WTR HTR-10GAL/ELEC/LP/MTR/TRAID
- (265) CODES/STANDARDS-CSA/CMVSS

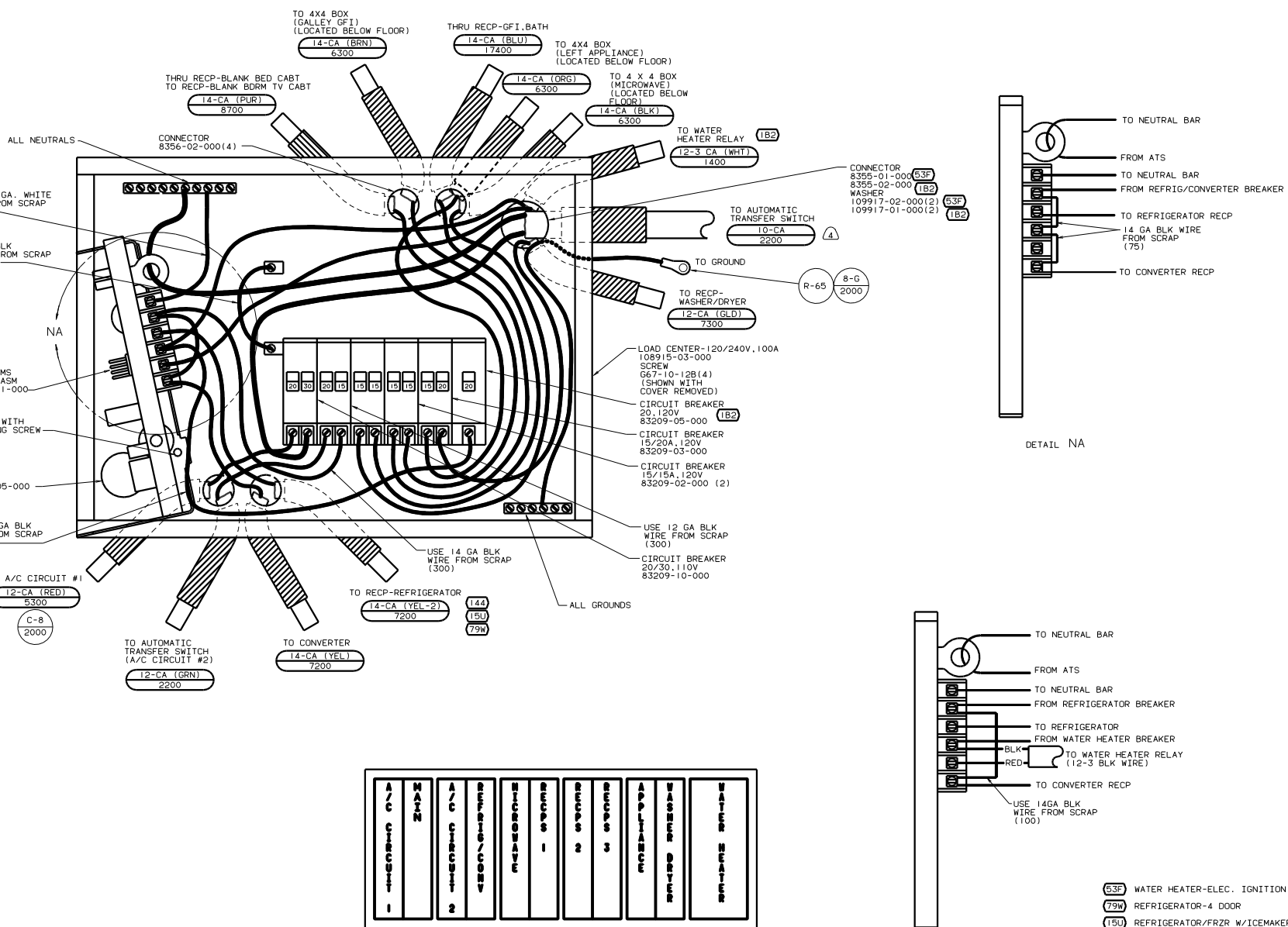
00 P36LD (265) (12D)

| | | | |
|----------|-------|----------------------------|------|
| TITLE | | WIRING INSTL-BODY(R 30 CA) | |
| 30-40 | SCALE | REV | DATE |
| SHEET 11 | OF 19 | 1.6 | NO |
| | | 133719 | |



- 79J INVERTER/CHARGER-1,500 WATT
- 26K REAR STEREO SYSTEM WITHOUT
- 51B HAIR DRYER
- 79J INVERTER/CHARGER-1,500 WATT
- 13B INVERTER/CHARGER-DC/AC W/O
- 21M WASHER/DRYER PREP
- 78J ELECTRICAL SYSTEM-50 AMP
- 182 WTR HTR-10GAL/ELEC/LP/MTR/10D
- 265 CODES/STANDARDS-CSA/CMVSS

5. ROUTE WIRE IN SIDEWALL DURING INSTALLATION.
 4. ROUTE WIRE IN FLOOR DURING INSTALLATION.
 3. WIRE ROUTED IN SIDEWALL.
2. ALL WIRES ARE TO BE CLAMPED WITH CLAMP 10497-05-000 WITHIN 200 OF OUTLET BOXES AND SPLICES. USE SCREW G67-10-12B.
1. ALL WIRE TO BE CLAMPED WITH CLAMP 10495-01-000 OR CLIP 80734-02-000 EVERY 700. USE SCREW G67-10-12B UNLESS OTHERWISE SPECIFIED.



| | | | | | | | | |
|-----------------------|------|------------------|-----------|--------|--------|--------|-----------------|-----------------|
| A / C CIRCUIT 1 | MAIN | REFRIG / CONV | MICROWAVE | RECP 1 | RECP 2 | RECP 3 | WASHER DRYER | WATER HEATER |
|-----------------------|------|------------------|-----------|--------|--------|--------|-----------------|-----------------|

LABEL 95721-35-000

INSTALL LABEL ON FRONT PANEL BELOW BREAKERS BETWEEN MOUNTING HOLES

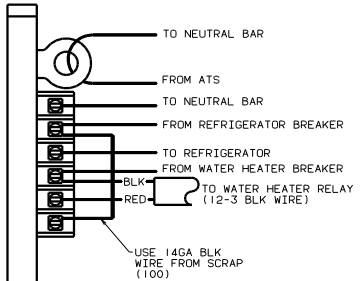
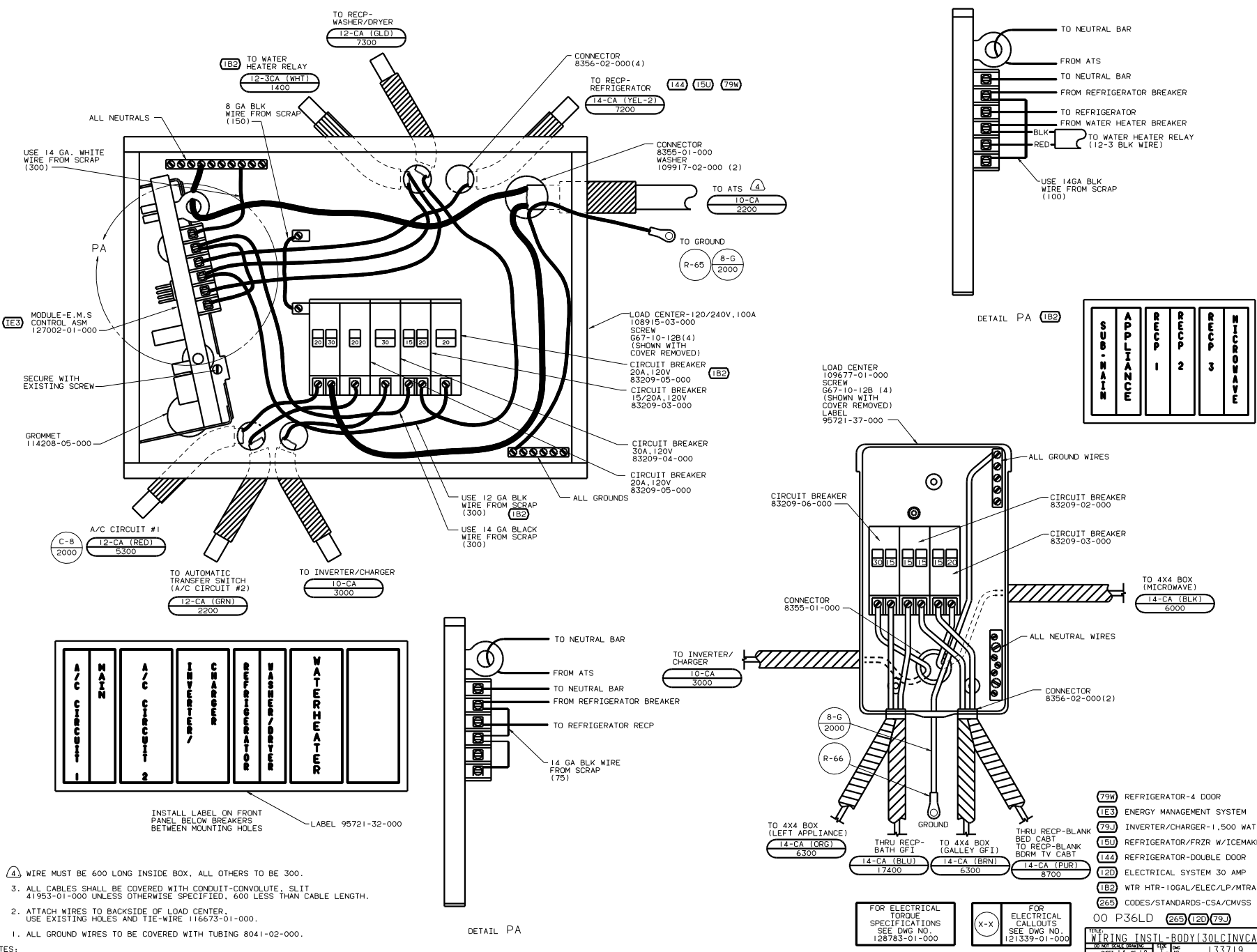
- 4. WIRE MUST BE 600 LONG INSIDE BOX. ALL OTHERS TO BE 300.
- 3. ALL CABLES SHALL BE COVERED WITH CONDUIT-CONVOLUTE, SLIT 41953-01-000 UNLESS OTHERWISE SPECIFIED. 600 LESS THAN CABLE LENGTH.
- 2. ATTACH WIRES TO BACKSIDE OF LOAD CENTER. USE EXISTING HOLES AND TIE-WIRE 116673-01-000.
- 1. ALL GROUND WIRES TO BE COVERED WITH TUBING 8041-02-000.

- (63F) WATER HEATER-ELEC. IGNITION
- (79W) REFRIGERATOR-4 DOOR
- (15U) REFRIGERATOR/FRZR W/ICEMAKER
- (144) REFRIGERATOR-DOUBLE DOOR
- (1B2) WTR HTR-10GAL/ELEC/LP/MTR/AID
- (1E3) ENERGY MANAGMNT SYSTEM
- (265) CODES/STANDARDS-CSA/CMVSS
- (120) ELECTRICAL SYSTEM 30 AMP

FOR ELECTRICAL TORQUE SPECIFICATIONS SEE DWG NO. 128783-01-000

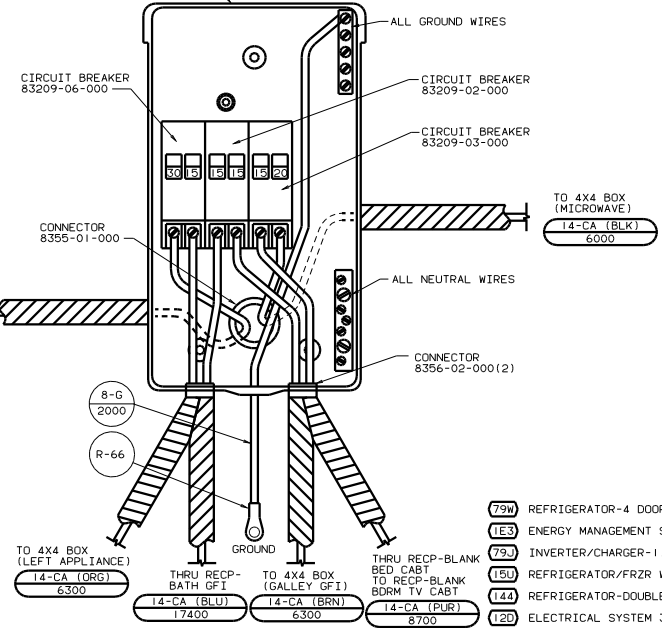
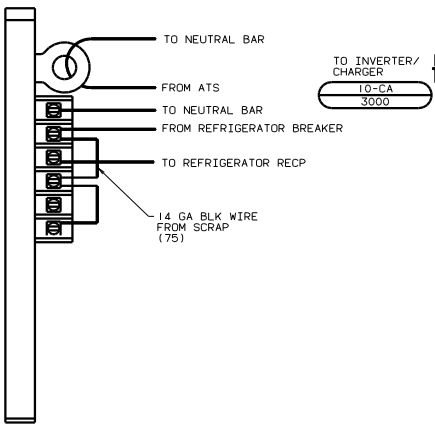
FOR ELECTRICAL CALLOUTS SEE DWG NO. 121339-01-000

00 P36LD (265) (120) (1E3) WIRING INSTL-BODY(30 LC CA) SHEET 13 OF 19



| | | | | | |
|----------|-----------|---------|---------|---------|-----------|
| SUB-MAIN | APPLIANCE | RECIP 1 | RECIP 2 | RECIP 3 | MICROWAVE |
|----------|-----------|---------|---------|---------|-----------|

| | | | | | | |
|---------------|------|---------------|------------------|--------------|--------------|--------------|
| A/C CIRCUIT 1 | MAIN | A/C CIRCUIT 2 | INVERTER/CHARGER | REFRIGERATOR | WASHER/DRYER | WATER HEATER |
|---------------|------|---------------|------------------|--------------|--------------|--------------|

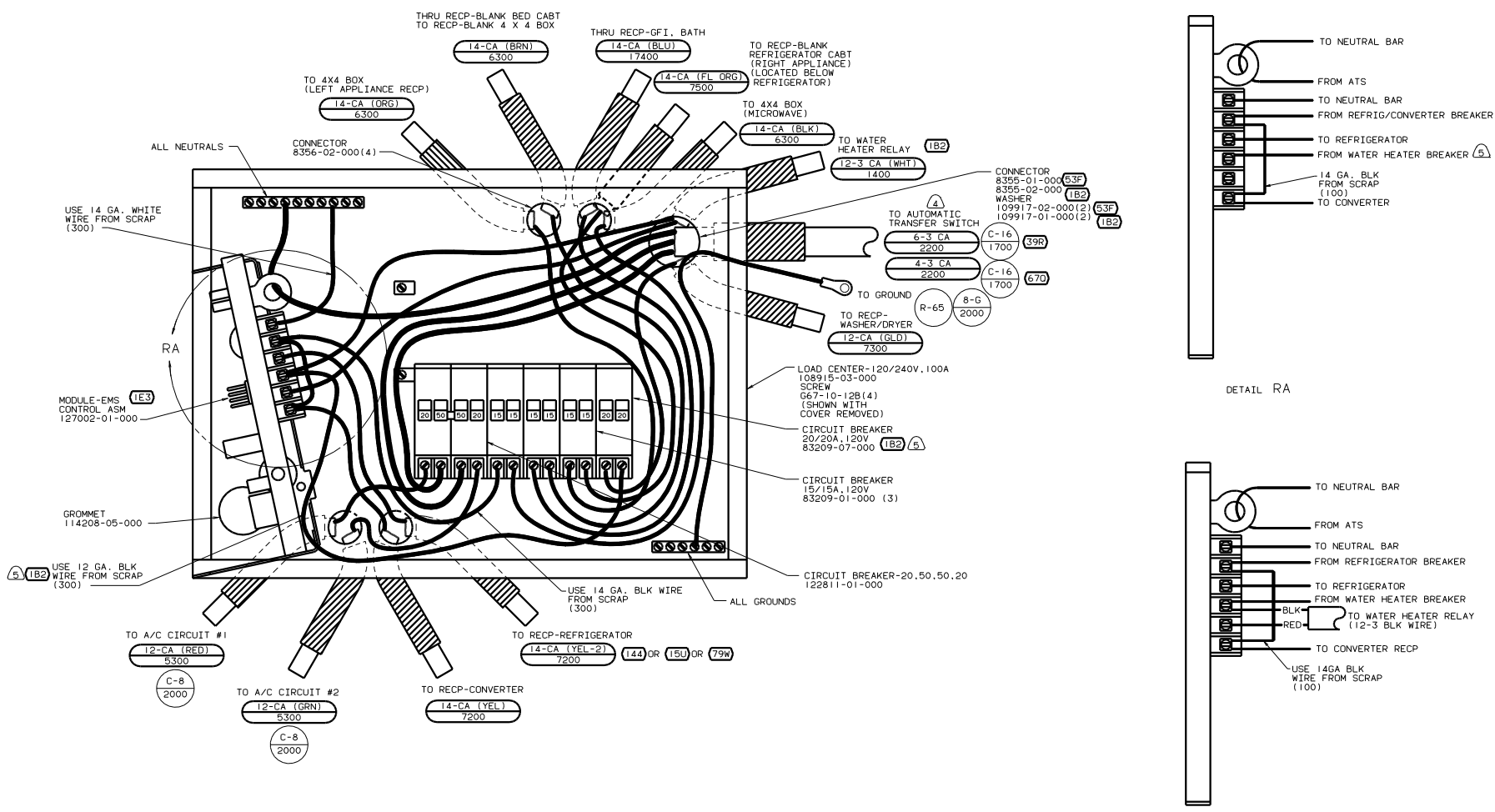


- (79W) REFRIGERATOR-4 DOOR
- (1E3) ENERGY MANAGEMENT SYSTEM
- (72) INVERTER/CHARGER-1,500 WATT
- (15U) REFRIGERATOR/FRZR W/ICEMAKER
- (144) REFRIGERATOR-DOUBLE DOOR
- (120) ELECTRICAL SYSTEM 30 AMP
- (1B2) WTR HTR-10GAL/ELEC/LP/MTR/DAID
- (265) CODES/STANDARDS-CSA/CMVSS

4. WIRE MUST BE 600 LONG INSIDE BOX, ALL OTHERS TO BE 300.
3. ALL CABLES SHALL BE COVERED WITH CONDUIT-CONVOLUTE, SLIT 41953-01-000 UNLESS OTHERWISE SPECIFIED. 600 LESS THAN CABLE LENGTH.
2. ATTACH WIRES TO BACKSIDE OF LOAD CENTER. USE EXISTING HOLES AND TIE-WIRE 116673-01-000.
1. ALL GROUND WIRES TO BE COVERED WITH TUBING 8041-02-000.

FOR ELECTRICAL TORQUE SPECIFICATIONS SEE DWG NO. 128783-01-000

FOR ELECTRICAL CALLOUTS SEE DWG NO. 121339-01-000



| | | | | | | | | |
|----------------|--------------|-------------|--------|--------|-----------|-----------|--------------|--------------|
| A/C CIRCUIT #1 | WATER HEATER | REFRIG/CONV | RECP 1 | RECP 2 | APPLIANCE | APPLIANCE | WASHER/DRYER | WATER HEATER |
| A/C CIRCUIT #2 | WATER HEATER | REFRIG/CONV | RECP 1 | RECP 2 | APPLIANCE | APPLIANCE | WASHER/DRYER | WATER HEATER |

- THIS BREAKER MUST BE INSTALLED AND WIRED TO EMS EVEN WITHOUT (1B2)
- WIRE MUST BE 600 LONG INSIDE BOX, ALL OTHERS TO BE 300.
- ALL CABLES SHALL BE COVERED WITH CONDUIT-CONVOLUTE, SLIT 41953-01-000 UNLESS OTHERWISE SPECIFIED. 600 LESS THAN CABLE LENGTH.
- ATTACH WIRES TO BACKSIDE OF LOAD CENTER, USE EXISTING HOLES AND TIE-WIRE 116673-01-000.
- ALL GROUND WIRES TO BE COVERED WITH TUBING 8041-02-000.

INSTALL LABEL ON FRONT PANEL BELOW BREAKERS BETWEEN MOUNTING HOLES

LABEL 95721-36-000

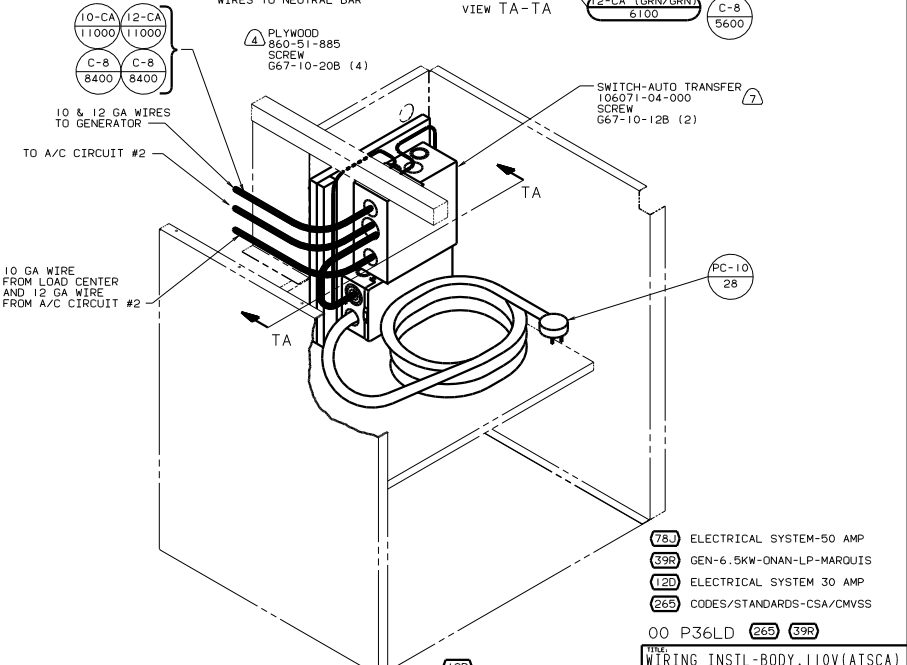
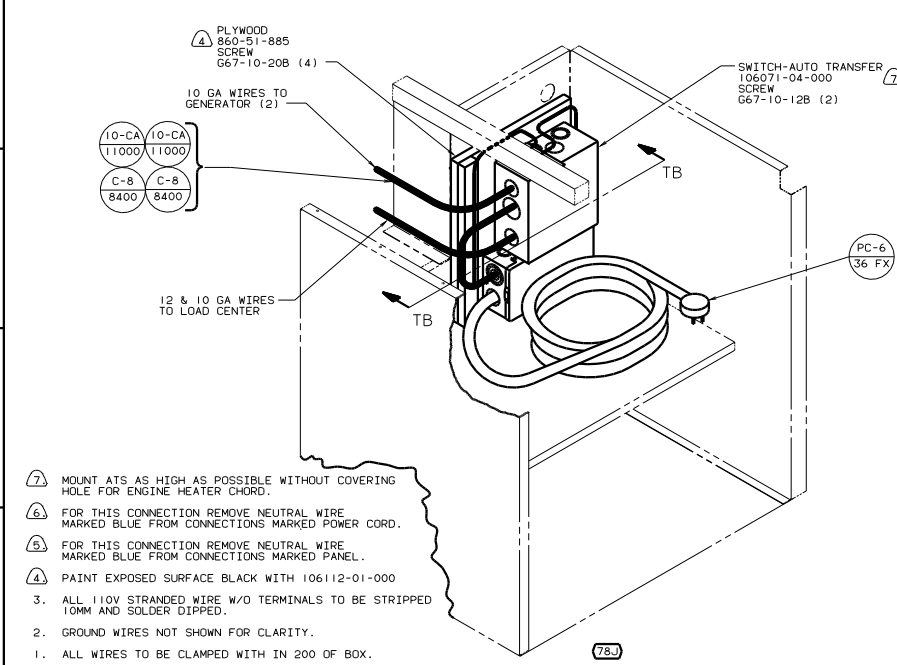
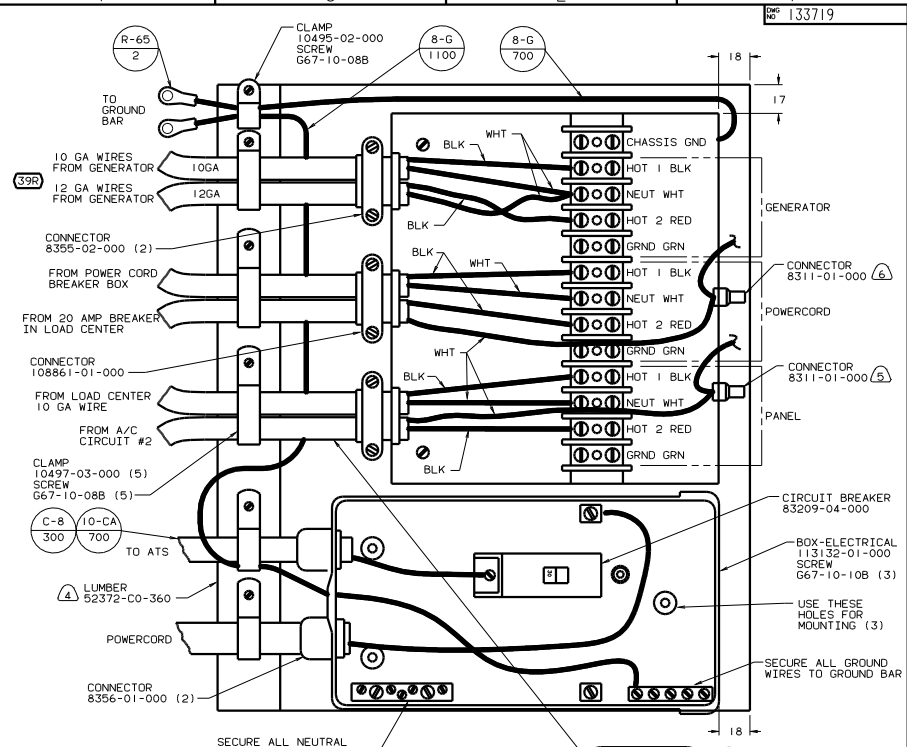
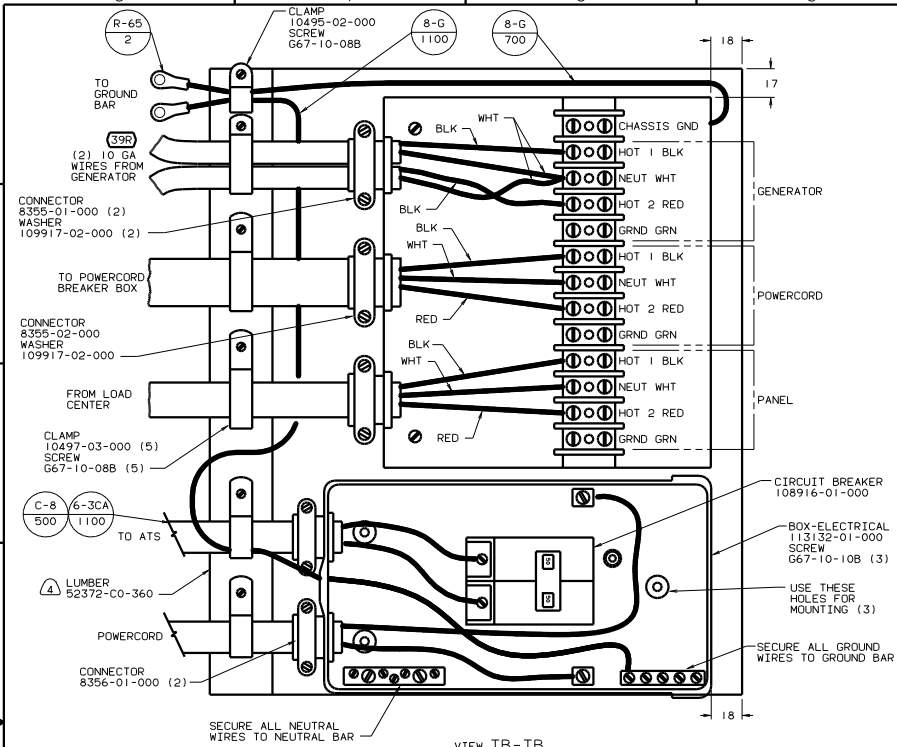
FOR ELECTRICAL TORQUE SPECIFICATIONS SEE DWG NO. 128783-01-000

FOR ELECTRICAL CALLOUTS SEE DWG NO. 121339-01-000

- (63F) WATER HEATER-ELEC. IGNITION
- (670) GEN-7.5KW-ONAN-QUIET DIESEL
- (39A) GEN-6.5KW-ONAN-LP-MARQUIS
- (79W) REFRIGERATOR-4 DOOR
- (15U) REFRIGERATOR/FRZR W/ICEMAKER
- (144) REFRIGERATOR-DOUBLE DOOR
- (1B2) WTR HTR-10GAL/ELEC/LP/MTR/TRAID
- (78J) ELECTRICAL SYSTEM - 50 AMP
- (1E3) ENERGY MANEMNT SYSTEM
- (2E5) CODES/STANDARDS-CSA/CMVSS

00 P36LD (265) (1E3) (78J)

WIRING INSTL-BODY(50 LC CA)



- 78J MOUNT ATS AS HIGH AS POSSIBLE WITHOUT COVERING HOLE FOR ENGINE HEATER CHORD.
- 66 FOR THIS CONNECTION REMOVE NEUTRAL WIRE MARKED BLUE FROM CONNECTIONS MARKED POWER CORD.
- 55 FOR THIS CONNECTION REMOVE NEUTRAL WIRE MARKED BLUE FROM CONNECTIONS MARKED PANEL.
- 44 PAINT EXPOSED SURFACE BLACK WITH 106112-01-000
3. ALL 110V STRANDED WIRE W/O TERMINALS TO BE STRIPPED 1/8" AND SOLDER DIPPED.
2. GROUND WIRES NOT SHOWN FOR CLARITY.
1. ALL WIRES TO BE CLAMPED WITH IN 200 OF BOX.

| | |
|-----|---------------------------|
| 78J | ELECTRICAL SYSTEM-50 AMP |
| 39R | GEN-6.5KW-ONAN-LP-MARQUIS |
| 12D | ELECTRICAL SYSTEM 30 AMP |
| 265 | CODES/STANDARDS-CSA/CMVSS |

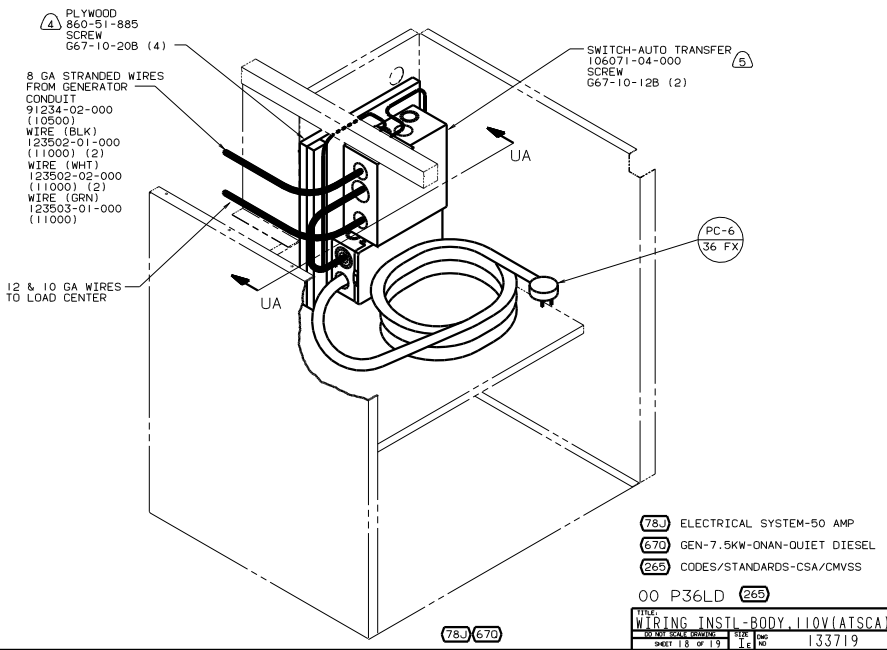
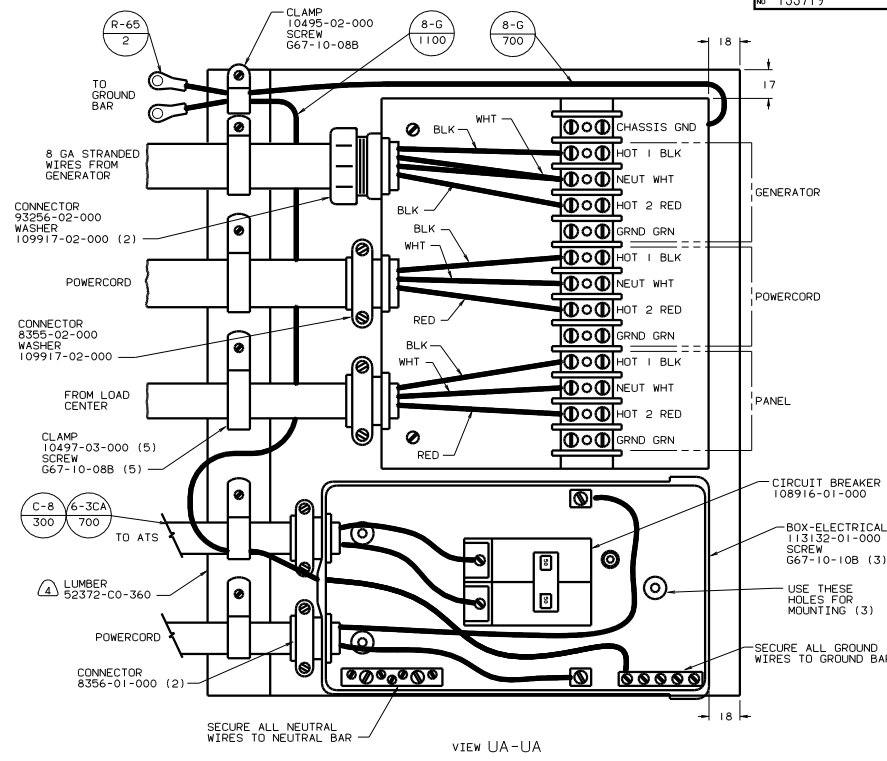
00 P36LD 265 39R

WIRING INSTL-RODY 110V(ATS/CA)

30 DAY SCALE DRAWING

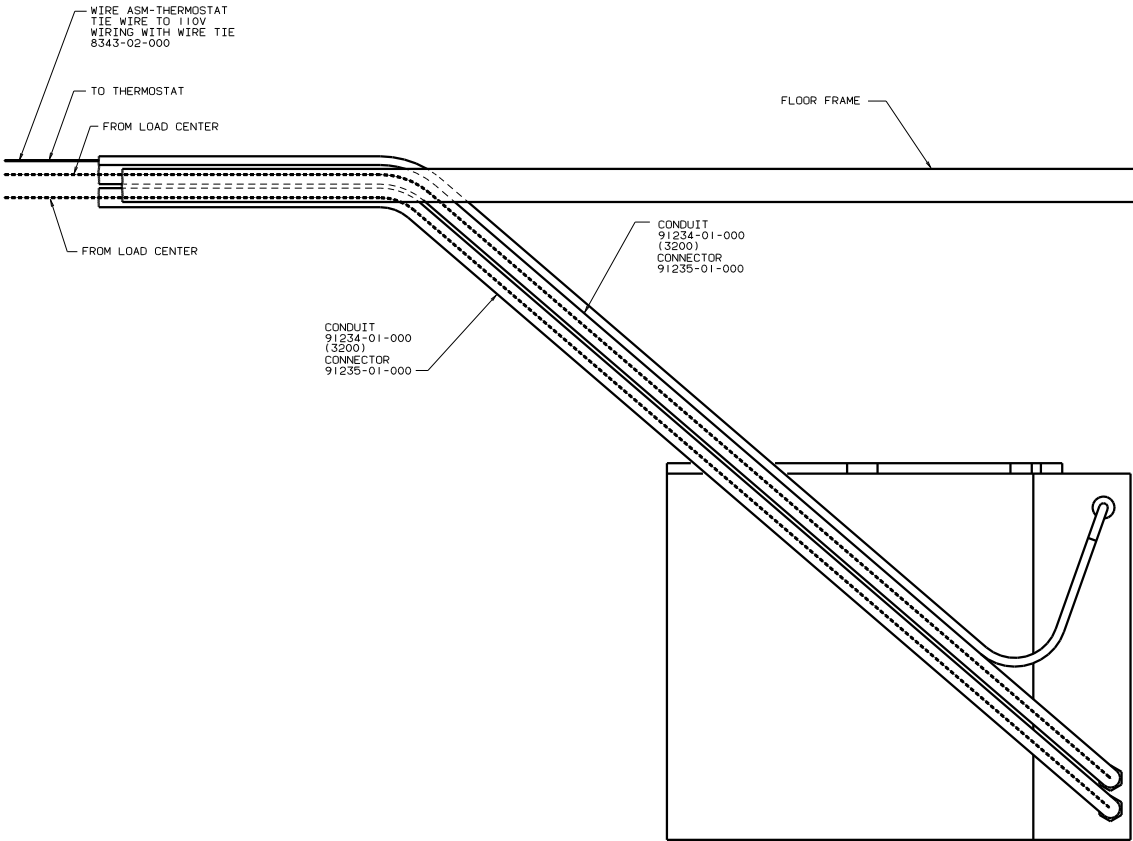
SHEET 17 OF 19

133719

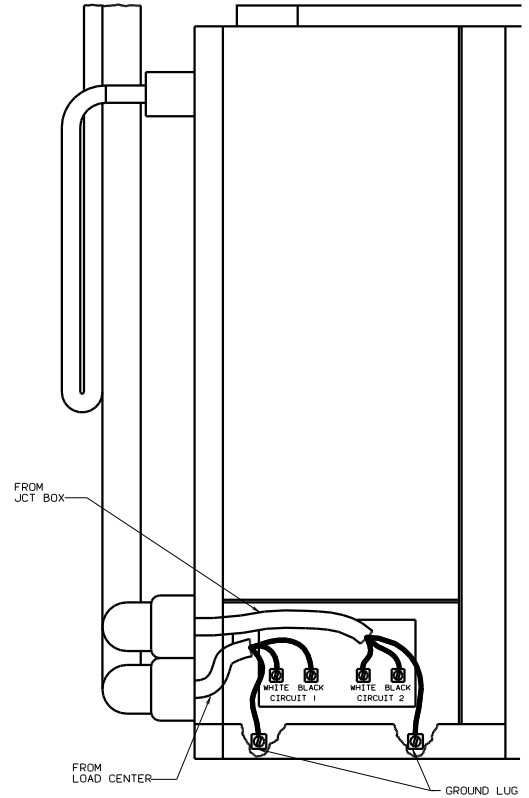


- 5. MOUNT ATS AS HIGH AS POSSIBLE WITHOUT COVERING HOLE FOR ENGINE HEATER CHORD.
- 4. PAINT EXPOSED SURFACE BLACK WITH 106112-01-000
- 3. ALL 110V STRANDED WIRE W/O TERMINALS TO BE STRIPPED 10MM AND SOLDER DIPPED.
- 2. GROUND WIRES NOT SHOWN FOR CLARITY.
- 1. ALL WIRES TO BE CLAMPED WITH IN 200 OF BOX.

NOTES:



VIEW RA-RA



(265) CODES/STANDARDS-CSA/CMVSS
 (1B1) CODES/STANDARDS-USA

FOR ELECTRICAL TORQUE SPECIFICATIONS SEE DWG NO. 128783-01-000

(X-X)

FOR ELECTRICAL CALLOUTS SEE DWG NO. 121339-01-000

00 P36LD (1B1) (265)

FILE: WIRING INSTL-BODY(CNTRL A/C)
 SHEET 19 OF 19