



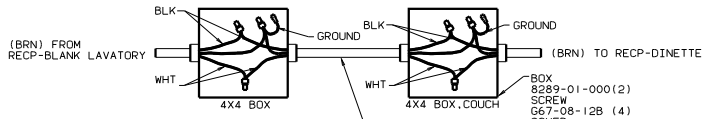
DANGER

Danger of electrical shock, burns or death. Always remove all power sources before attempting any repair, service or diagnostic work. Power can be present from shore power, generator, inverter or battery. All power sources must be disabled and secured before performing any service.



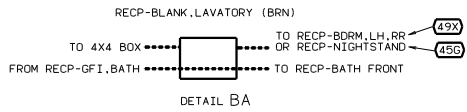
CAUTION

If you lack the skills, tools or equipment to perform diagnostic or repair work leave such work to an authorized Winnebago Industries dealer or other qualified shop.

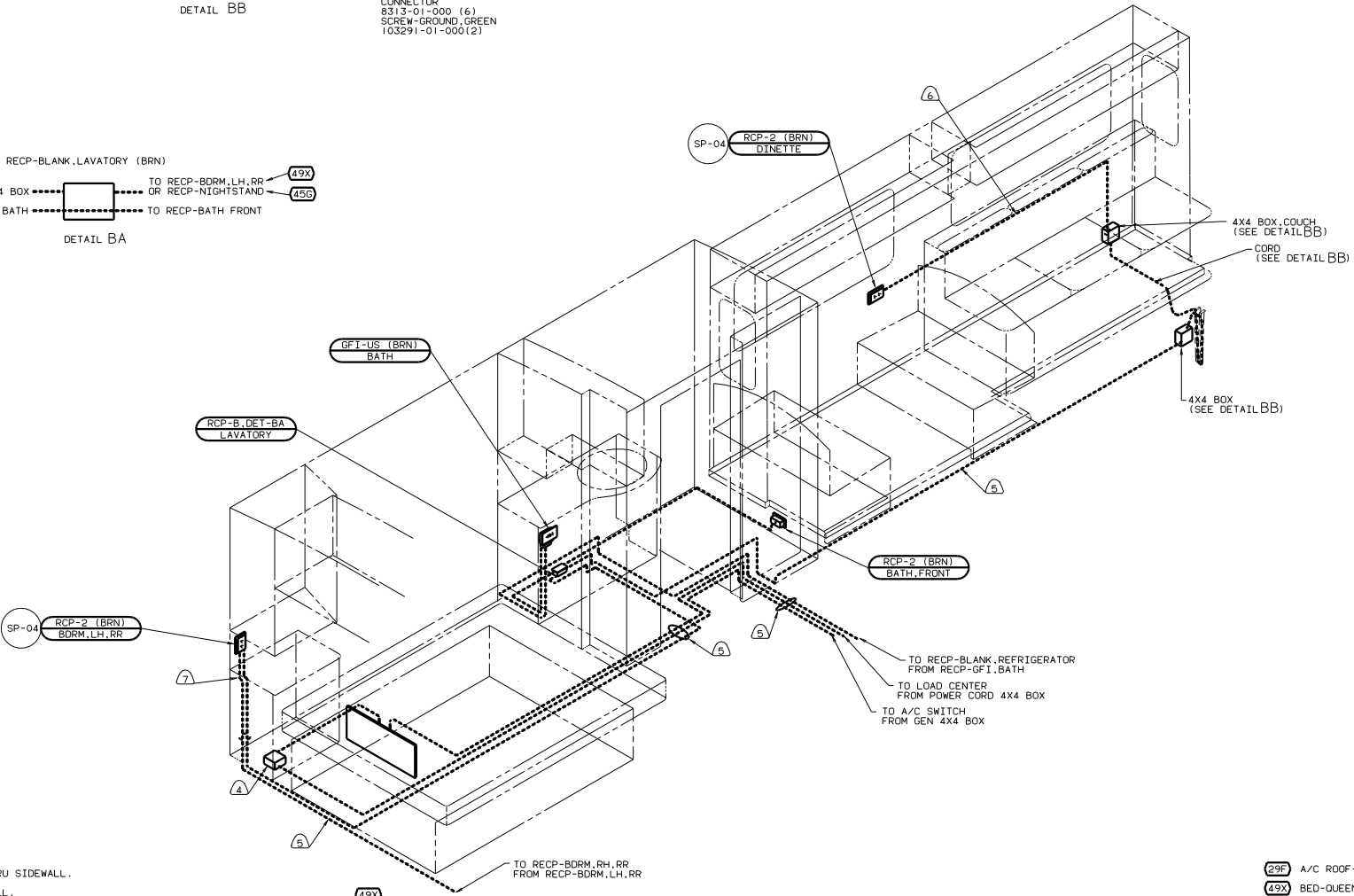


DETAIL BB

- BOX 8289-01-000(2)
- SCREW 667-08-12B (4)
- COVER 8294-01-000(2)
- CONNECTOR 133678-01-000 (2)
- WIRE ASM-GROUND 8356-01-000(4)
- CONNECTOR 8313-01-000 (6)
- SCREW-GROUND, GREEN 103291-01-000(2)



DETAIL BA



- NOTES:
- ⑦ ROUTE WIRES THRU SIDEWALL.
 - ⑥ WIRE IN SIDEWALL.
 - ⑤ WIRE ROUTED BELOW FLOOR.
 - ④ SEE GENERATOR INSTL FOR ADDITIONAL INFORMATION.
3. ALL WIRES ARE TO BE CLAMPED WITH CLAMP 10495 WITHIN 200 OF OUTLET BOXES. USE SCREW 667-10-12B.
2. ALL WIRE ROUTED BELOW FLOOR TO BE CLAMPED WITH CLAMP 10497 AND SCREW 639-08-10 OR TIED WITH WIRE TIE 8343 FIRMLY AGAINST UPPER FLOOR SUPPORT AS REQUIRED AT LEAST EVERY 700MM OR AS OTHERWISE SPECIFIED.
1. ALL WIRE ROUTED ABOVE FLOOR TO BE CLAMPED WITH CLAMP 10495 AND SCREW 667-10-12B OR TIED WITH WIRE TIE 8343 AS REQUIRED AT LEAST EVERY 700MM OR AS OTHERWISE SPECIFIED.

- ②9F A/C ROOF-TWO 13,500 BTU
- ④9X BED-QUEEN-BACKWALL
- ④5G BED-TWINS
- ①E3 ENERGY MANAGEMNT SYSTEM
- ①B1 CODES STANDARDS/USA
- ①2D ELECTRICAL SYSTEM 30 AMP
- ⑥9L SLIDEOUT ROOM-FRONT LEFT

FOR ELECTRICAL TORQUE SPECIFICATIONS SEE DWG NO. 128783-01-000

(X-X)

FOR ELECTRICAL CALLOUTS SEE DWG NO. 121339-01-000

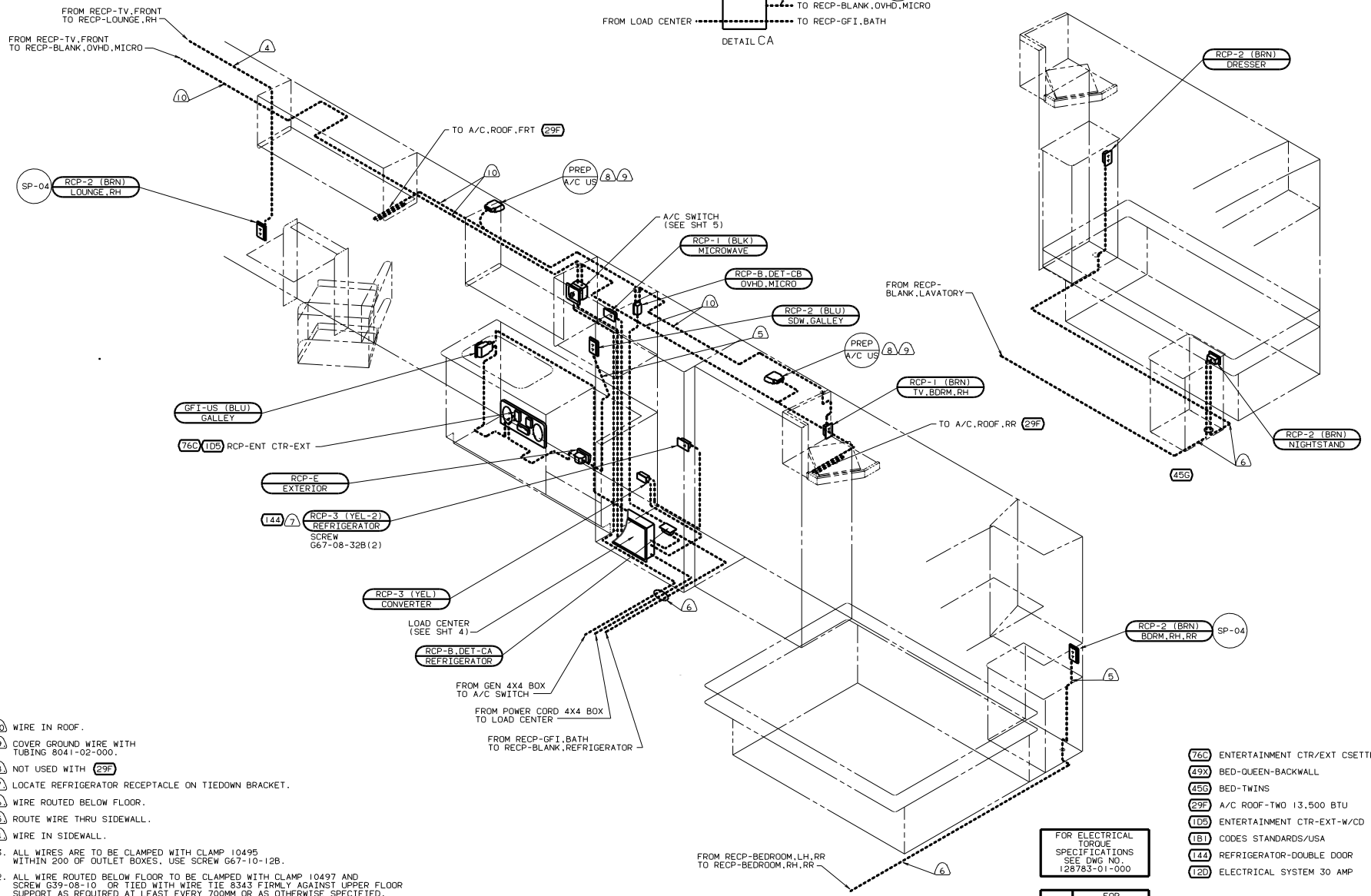
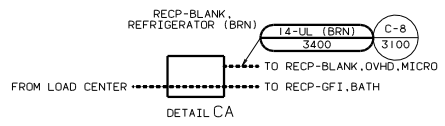
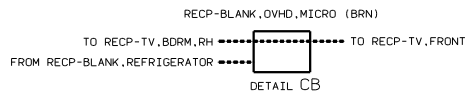
09L 1B1 12D 00 F35C

WIRING INSTL - BODY, 110V(130US)

DATE SCALE DRAWING: 1:1

SHEET 2 OF 17

133673



- 10 WIRE IN ROOF.
- 9 COVER GROUND WIRE WITH TUBING 8041-02-000.
- 8 NOT USED WITH 29F
- 7 LOCATE REFRIGERATOR RECEPTACLE ON TIEDOWN BRACKET.
- 6 WIRE ROUTED BELOW FLOOR.
- 5 ROUTE WIRE THRU SIDEWALL.
- 4 WIRE IN SIDEWALL.

3. ALL WIRES ARE TO BE CLAMPED WITH CLAMP 10495 WITHIN 200 OF OUTLET BOXES, USE SCREW G67-10-12B.
2. ALL WIRE ROUTED BELOW FLOOR TO BE CLAMPED WITH CLAMP 10497 AND SCREW G39-08-10 OR TIED WITH WIRE TIE 8343 FIRMLY AGAINST UPPER FLOOR SUPPORT AS REQUIRED AT LEAST EVERY 700MM OR AS OTHERWISE SPECIFIED.
1. ALL WIRE ROUTED ABOVE FLOOR TO BE CLAMPED WITH CLAMP 10495 AND SCREW G67-10-12B OR TIED WITH WIRE TIE 8343 AS REQUIRED AT LEAST EVERY 700MM OR AS OTHERWISE SPECIFIED.

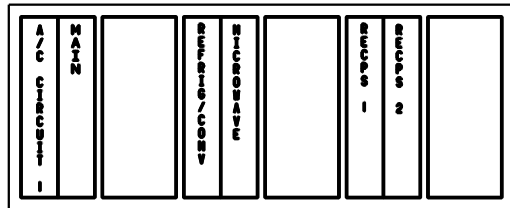
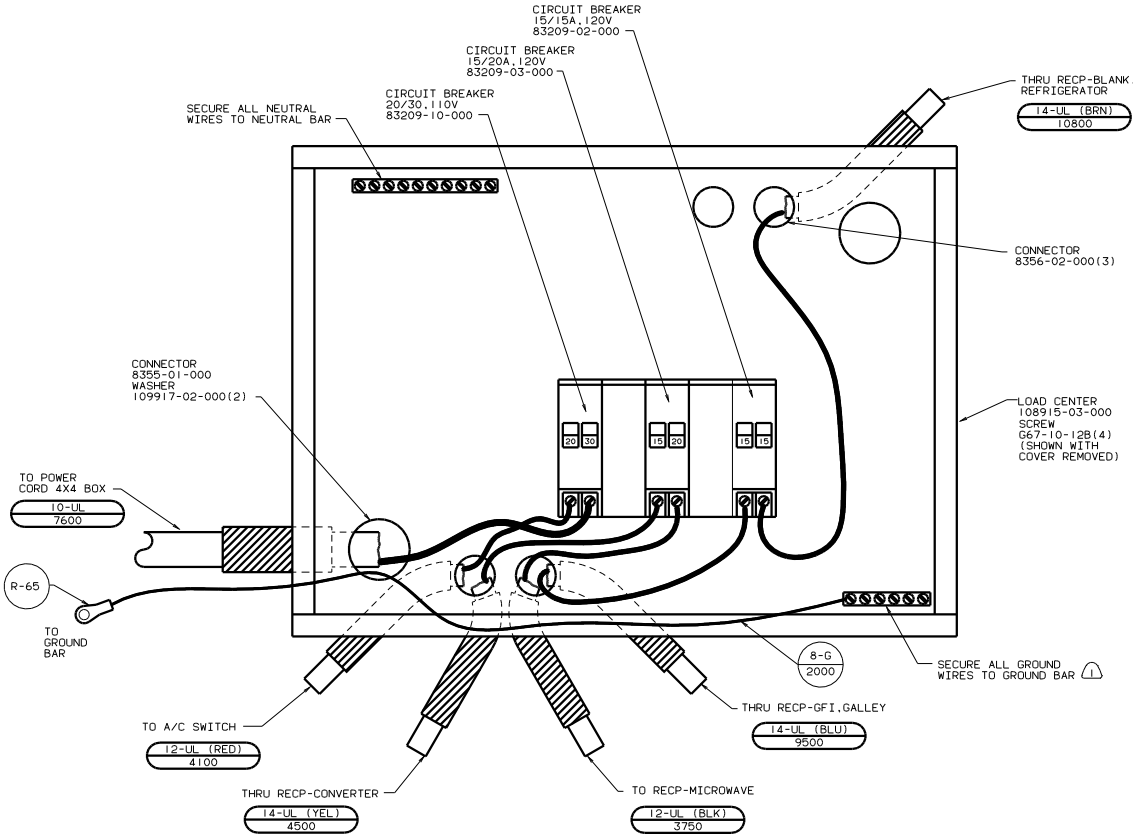
- 76C ENTERTAINMENT CTR/EXT CSETTE
- 49X BED-QUEEN-BACKWALL
- 456 BED-TWINS
- 29F A/C ROOF-TWO 13,500 BTU
- 105 ENTERTAINMENT CTR-EXT-W/CD
- 181 CODES STANDARDS/USA
- 144 REFRIGERATOR-DOUBLE DOOR
- 120 ELECTRICAL SYSTEM 30 AMP

FOR ELECTRICAL TORQUE SPECIFICATIONS SEE DWG NO. 128783-01-000

FOR ELECTRICAL CALLOUTS SEE DWG NO. 121339-01-000

120	181	29F	00 F35C
WIRING INSTL - BODY 110V(30US)			133673
SHEET 3 OF 17		FIG 1E	

NOTES:



- (29F) A/C ROOF-TWO 13,500 BTU
- (181) CODES STANDARDS/USA
- (12D) ELECTRICAL SYSTEM 30 AMP
- (09L) SLIDEOUT ROOM-FRONT LEFT

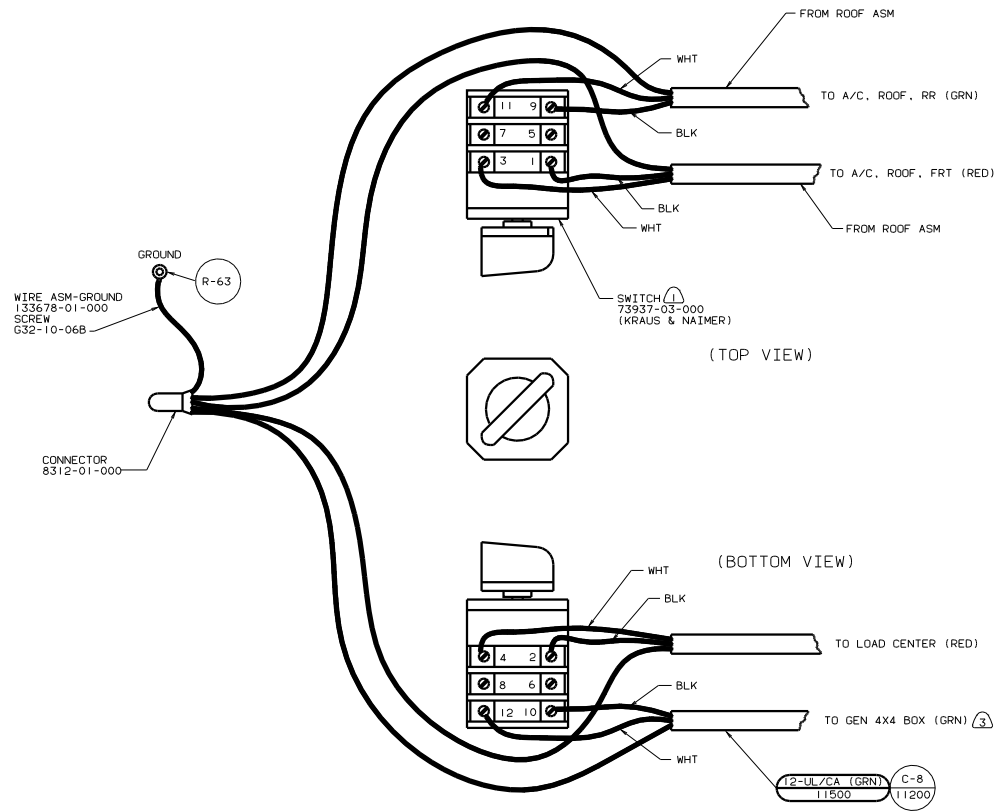
2. ALL CABLES SHALL BE COVERED WITH CONVOLUTE SLIT 41953-01-000 UNLESS OTHERWISE SPECIFIED. 600 LESS THAN CABLE LENGTH.

⚠ ALL GROUND WIRES TO BE COVERED WITH TUBING 8041-02-000.

(X-X) FOR ELECTRICAL CALLOUTS SEE DWG NO. 121339-01-000

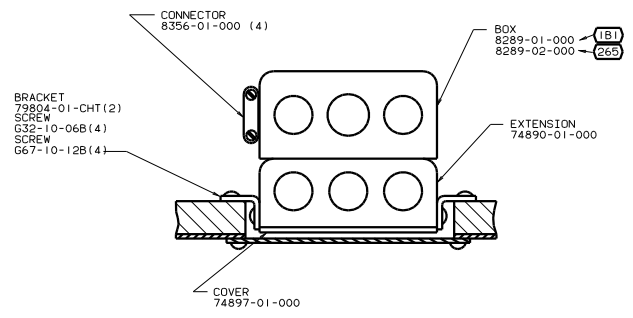
FOR ELECTRICAL TORQUE SPECIFICATIONS SEE DWG NO. 128783-01-000

(12D) (181) (09L) (29F) 00 F35C
 WIRING INSTL-BODY,110V(1C30US)
 SHEET 4 OF 17
 133673

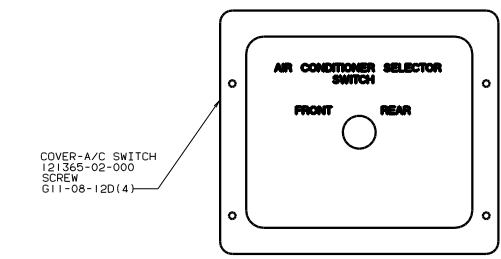
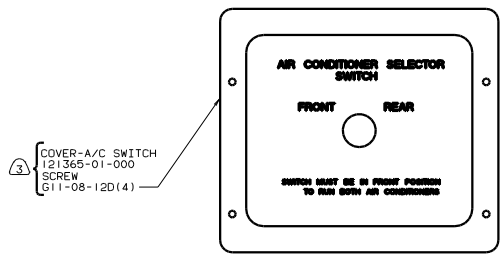


(TOP VIEW)

(BOTTOM VIEW)



TOP VIEW OF BOX



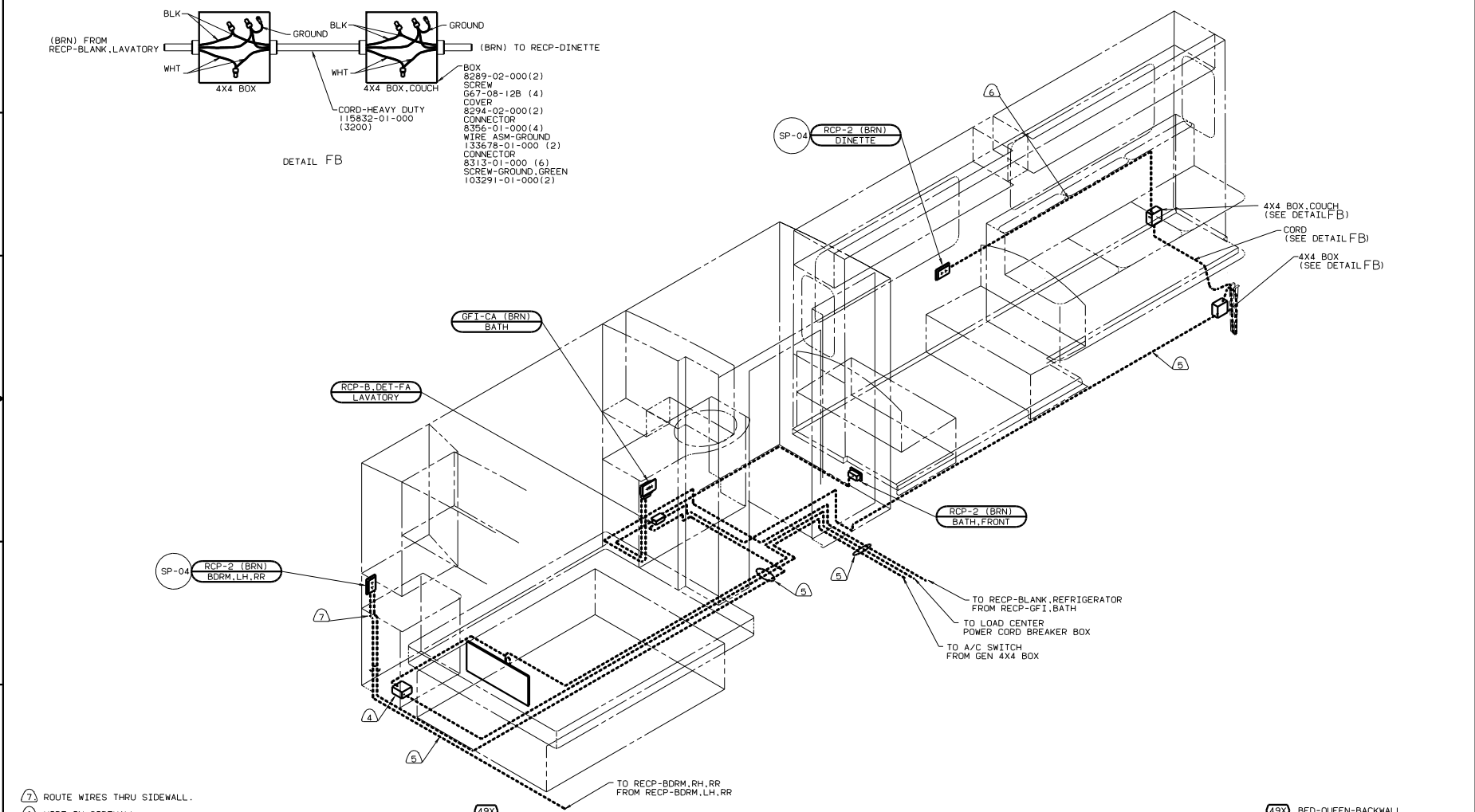
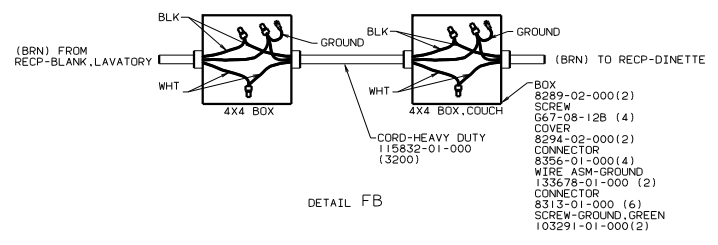
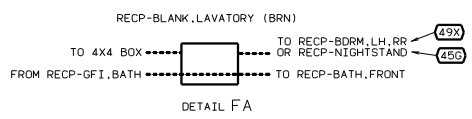
- Ⓜ USE WITH 5000 WATT GENERATOR OR LARGER.
- 2. ALL GROUND WIRES TO BE COVERED WITH TUBING 8041-02-000.
- Ⓜ FASTEN SWITCH TO COVER 74897-01-000 BEFORE FASTENING COVER TO BOX.

- Ⓜ CODES/STANDARDS-CSA/CMVSS
- Ⓜ A/C ROOF-TWO 13,500 BTU
- Ⓜ CODES STANDARDS/USA
- Ⓜ ELECTRICAL SYSTEM 30 AMP

FOR ELECTRICAL TORQUE SPECIFICATIONS SEE DWG NO. 128783-01-000

FOR ELECTRICAL CALLOUTS SEE DWG NO. 121339-01-000

120	1B1	265	29F	00 F35C
WIRING INSTL-BODY,110V(A/C SW)				
SHEET 5 OF 17				

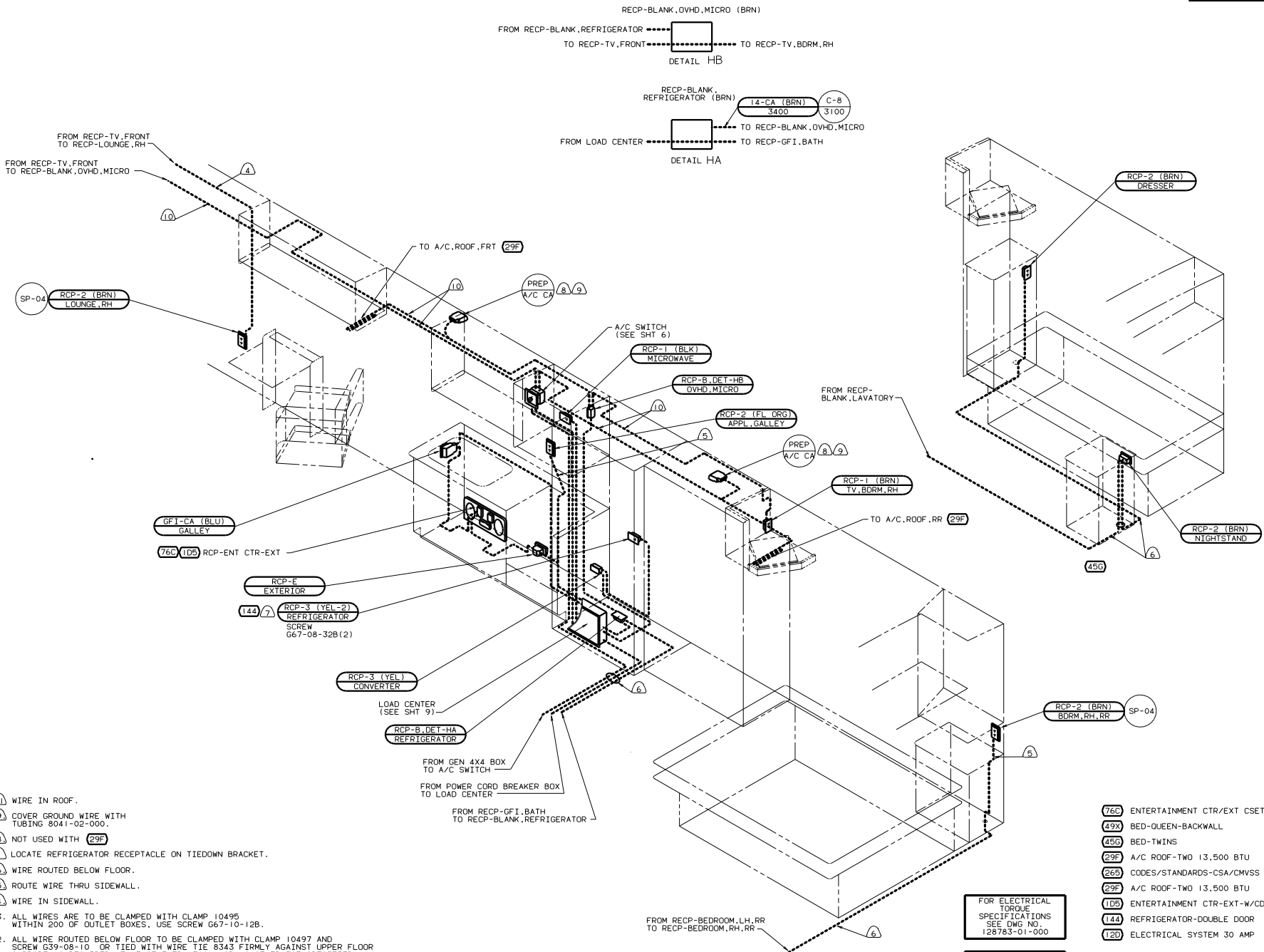


- 7 ROUTE WIRES THRU SIDEWALL.
 6 WIRE IN SIDEWALL.
 5 WIRE ROUTED BELOW FLOOR.
 4 SEE GENERATOR INSTL FOR ADDITIONAL INFORMATION.
3. ALL WIRES ARE TO BE CLAMPED WITH CLAMP 10495 WITHIN 200 OF OUTLET BOXES, USE SCREW G67-10-12B.
2. ALL WIRE ROUTED BELOW FLOOR TO BE CLAMPED WITH CLAMP 10497 AND SCREW G39-08-10 OR TIED WITH WIRE TIE 8343 FIRMLY AGAINST UPPER FLOOR SUPPORT AS REQUIRED AT LEAST EVERY 700MM OR AS OTHERWISE SPECIFIED.
1. ALL WIRE ROUTED ABOVE FLOOR TO BE CLAMPED WITH CLAMP 10498 AND SCREW G67-10-12B OR TIED WITH WIRE TIE 8343 AS REQUIRED AT LEAST EVERY 700MM OR AS OTHERWISE SPECIFIED.

- 49X BED-QUEEN-BACKWALL
 45G BED-TWINS
 265 CODES/STANDARDS-CSA/CMVSS
 29F A/C ROOF-TWO 13,500 BTU
 12D ELECTRICAL SYSTEM 30 AMP
 09L SLIDEOUT ROOM-FRONT LEFT

FOR ELECTRICAL TORQUE SPECIFICATIONS SEE DWG NO. 128783-01-000	X-X	FOR ELECTRICAL CALLOUTS SEE DWG NO. 121339-01-000
--	-----	---

265	12D	09L	29F	00 F35C
WIRING INSTL - BODY, 110V(130CA)				133673
SHEET 6 OF 17				1.6



- (1) WIRE IN ROOF.
- (9) COVER GROUND WIRE WITH TUBING 8041-02-000.
- (8) NOT USED WITH (29F)
- (7) LOCATE REFRIGERATOR RECEPTACLE ON TIEDOWN BRACKET.
- (6) WIRE ROUTED BELOW FLOOR.
- (5) ROUTE WIRE THRU SIDEWALL.
- (4) WIRE IN SIDEWALL.

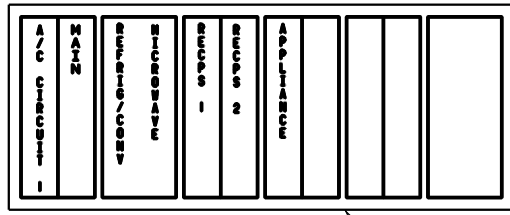
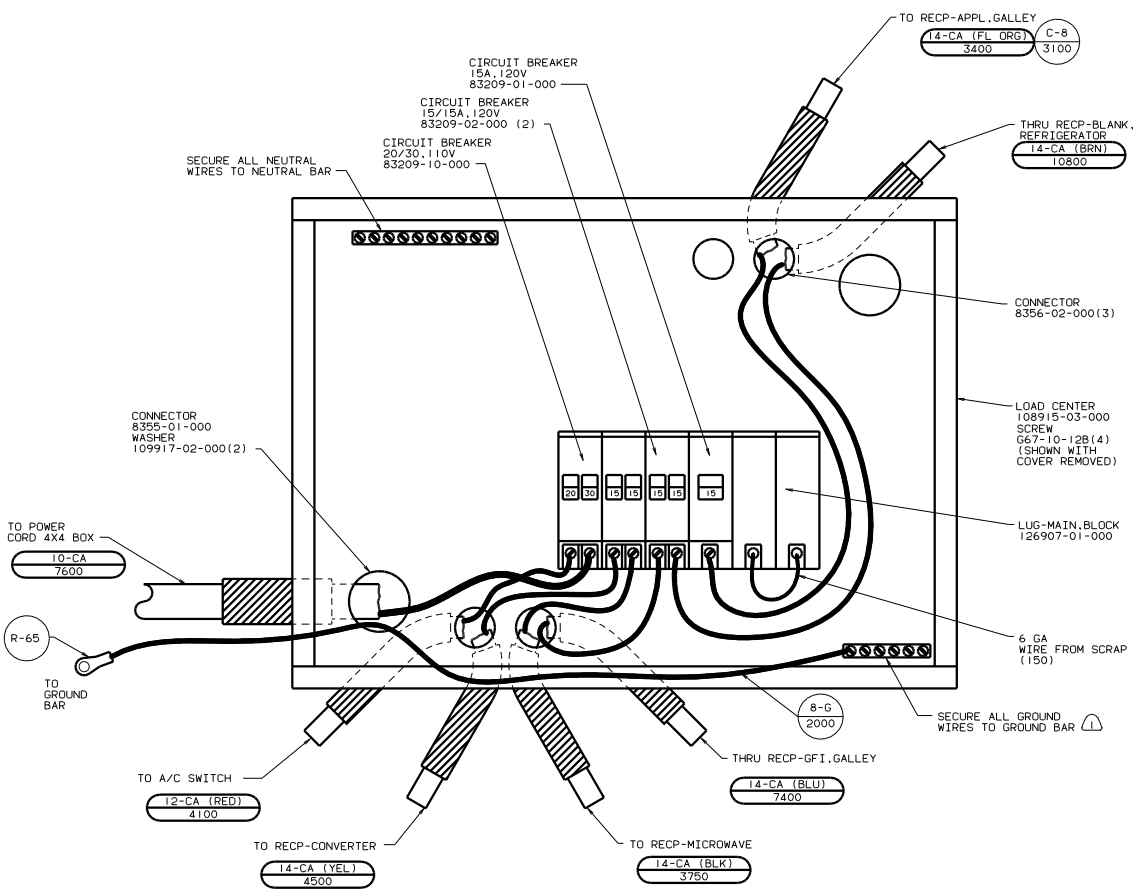
3. ALL WIRES ARE TO BE CLAMPED WITH CLAMP 10495 WITHIN 200 OF OUTLET BOXES, USE SCREW G67-10-12B.
2. ALL WIRE ROUTED BELOW FLOOR TO BE CLAMPED WITH CLAMP 10497 AND SCREW G39-08-10 OR TIED WITH WIRE TIE 8343 FIRMLY AGAINST UPPER FLOOR SUPPORT AS REQUIRED AT LEAST EVERY 700MM OR AS OTHERWISE SPECIFIED.
1. ALL WIRE ROUTED ABOVE FLOOR TO BE CLAMPED WITH CLAMP 10495 AND SCREW G67-10-12B OR TIED WITH WIRE TIE 8343 AS REQUIRED AT LEAST EVERY 700MM OR AS OTHERWISE SPECIFIED.

- (76C) ENTERTAINMENT CTR/EXT CSETTE
- (49X) BED-QUEEN-BACKWALL
- (45B) BED-TWINS
- (29F) A/C ROOF-TWO 13,500 BTU
- (265) CODES/STANDARDS-CSA/CMVSS
- (29F) A/C ROOF-TWO 13,500 BTU
- (105) ENTERTAINMENT CTR-EXT-W/CD
- (144) REFRIGERATOR-DOUBLE DOOR
- (120) ELECTRICAL SYSTEM 30 AMP

FOR ELECTRICAL TORQUE SPECIFICATIONS SEE DWG NO. 128763-01-000

FOR ELECTRICAL CALLOUTS SEE DWG NO. 121339-01-000

12D	265	29F	00 F35C
WIRING INSTL - BODY 110V(R30CA)			133673
SHEET 7 OF 17		133673	



INSTALL LABEL ON FRONT PANEL BELOW BREAKERS BETWEEN MOUNTING HOLES

LABEL 95721-26-000

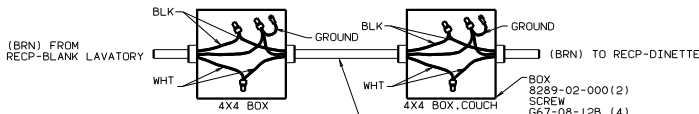
2. ALL CABLES SHALL BE COVERED WITH CONVOLUTE SLIT 41953-01-000 UNLESS OTHERWISE SPECIFIED. 600 LESS THAN CABLE LENGTH.
 ⚠ ALL GROUND WIRES TO BE COVERED WITH TUBING 8041-02-000.

- (265) CODES/STANDARDS-CSA/CMVSS
- (29F) A/C ROOF-TWO 13,500 BTU
- (12D) ELECTRICAL SYSTEM 30 AMP
- (09L) SLIDEOUT ROOM-FRONT LEFT

(X-X) FOR ELECTRICAL CALLOUTS SEE DWG NO. 121339-01-000

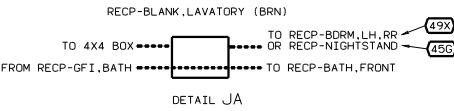
FOR ELECTRICAL TORQUE SPECIFICATIONS SEE DWG NO. 128783-01-000

(12D) (265) (09L) (29F) 00 F35C
 WIRING INSTL-BODY,110V(LC30CA)
 SHEET 8 OF 18

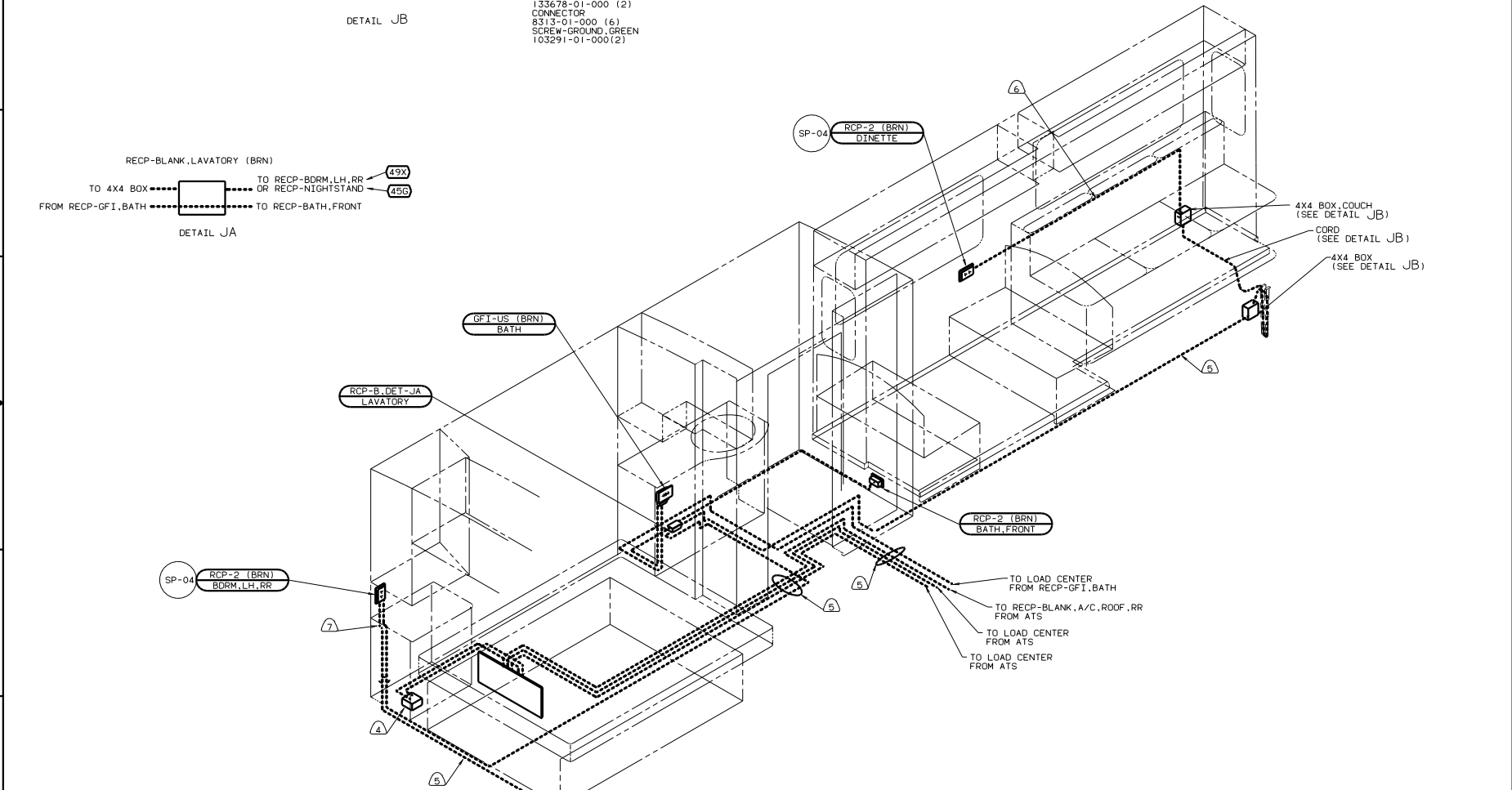


DETAIL JB

- BOX 8289-02-000(2)
- SCREW G67-08-12B (4)
- COVER 8294-02-000(2)
- CONNECTOR 8356-01-000(4)
- WIRE ASM-GROUND 133678-01-000 (2)
- CONNECTOR 8313-01-000 (6)
- SCREW-GROUND, GREEN 103291-01-000(2)



DETAIL JA



- ⑦ ROUTE WIRES THRU SIDEWALL.
- ⑥ WIRE IN SIDEWALL.
- ⑤ WIRE ROUTED BELOW FLOOR.
- ④ SEE GENERATOR INSTL FOR ADDITIONAL INFORMATION.

3. ALL WIRES ARE TO BE CLAMPED WITH CLAMP 10495 WITHIN 200 OF OUTLET BOXES, USE SCREW G67-10-12B.
2. ALL WIRE ROUTED BELOW FLOOR TO BE CLAMPED WITH CLAMP 10497 AND SCREW G39-08-10 OR TIED WITH WIRE TIE 8343 FIRMLY AGAINST UPPER FLOOR SUPPORT AS REQUIRED AT LEAST EVERY 700MM OR AS OTHERWISE SPECIFIED.
1. ALL WIRE ROUTED ABOVE FLOOR TO BE CLAMPED WITH CLAMP 10498 AND SCREW G67-10-12B OR TIED WITH WIRE TIE 8343 AS REQUIRED AT LEAST EVERY 700MM OR AS OTHERWISE SPECIFIED.

NOTES:

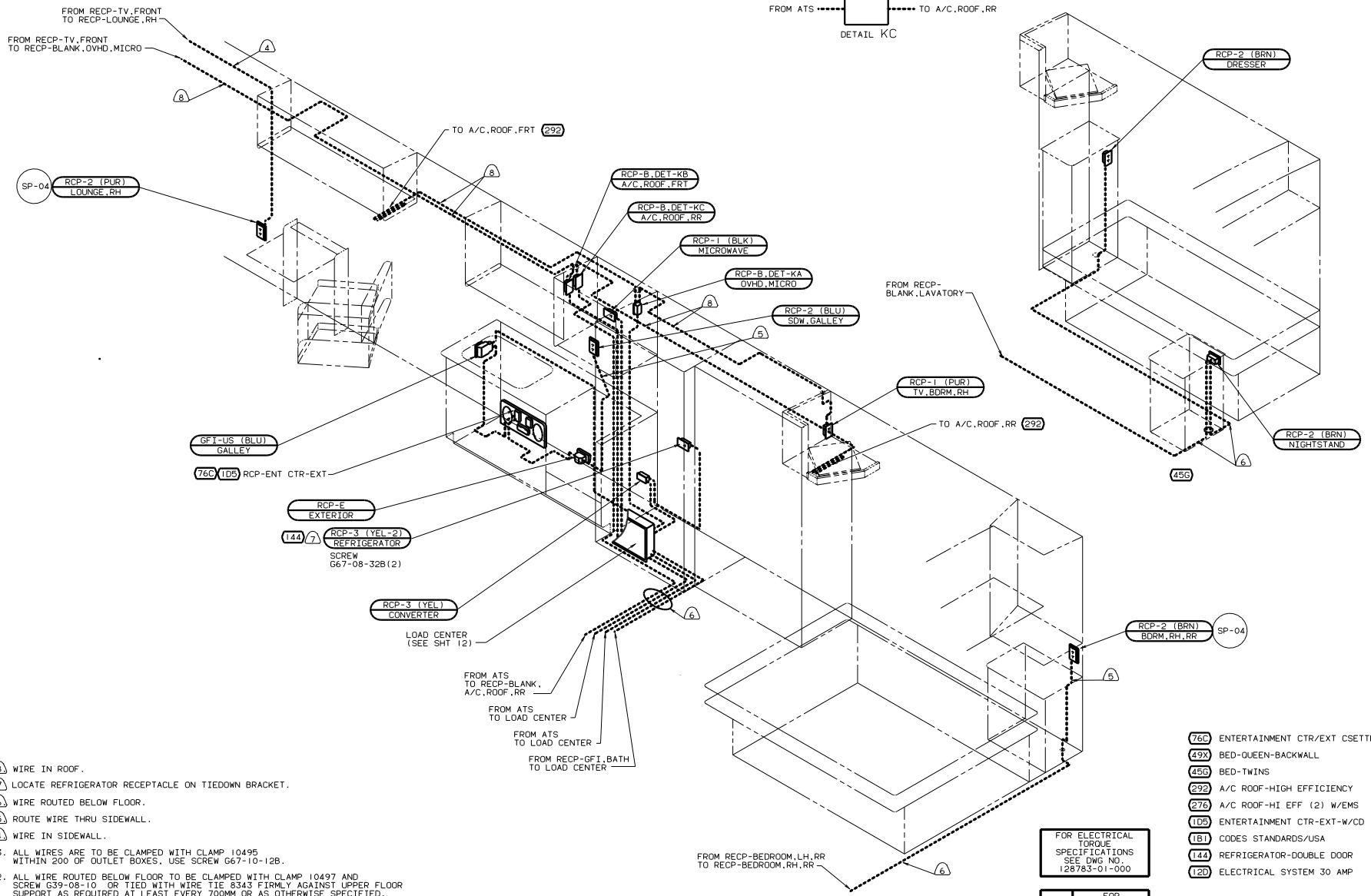
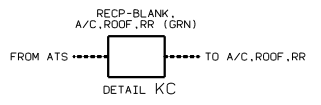
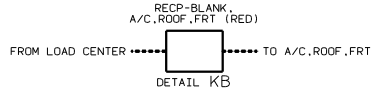
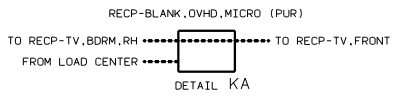
(49X) (1A8)

- (49X) BED-QUEEN-BACKWALL
- (45B) BED-TWINS
- (12D) ELECTRICAL SYSTEM 30 AMP
- (276) A/C ROOF-HI EFF (2) W/EMS
- (1B1) CODES STANDARDS/USA
- (09L) SLIDEDOUT ROOM-FRONT LEFT

FOR ELECTRICAL TORQUE SPECIFICATIONS SEE DWS NO. 128783-01-000

FOR ELECTRICAL CALLOUTS SEE DWS NO. 121339-01-000

181	120	276	09L	00 F35C
WIRING INSTL - BODY, 110V (130US)				
SHEET 9 OF 17				
133673				



- ⑧ WIRE IN ROOF.
- ⑦ LOCATE REFRIGERATOR RECEPTACLE ON TIEDOWN BRACKET.
- ⑥ WIRE ROUTED BELOW FLOOR.
- ⑤ ROUTE WIRE THRU SIDEWALL.
- ④ WIRE IN SIDEWALL.

3. ALL WIRES ARE TO BE CLAMPED WITH CLAMP 10495 WITHIN 200 OF OUTLET BOXES. USE SCREW G67-10-12B.
2. ALL WIRE ROUTED BELOW FLOOR TO BE CLAMPED WITH CLAMP 10497 AND SCREW G39-08-10 OR TIED WITH WIRE TIE 8343 FIRMLY AGAINST UPPER FLOOR SUPPORT AS REQUIRED AT LEAST EVERY 700MM OR AS OTHERWISE SPECIFIED.
1. ALL WIRE ROUTED ABOVE FLOOR TO BE CLAMPED WITH CLAMP 10498 AND SCREW G67-10-12B OR TIED WITH WIRE TIE 8343 AS REQUIRED AT LEAST EVERY 700MM OR AS OTHERWISE SPECIFIED.

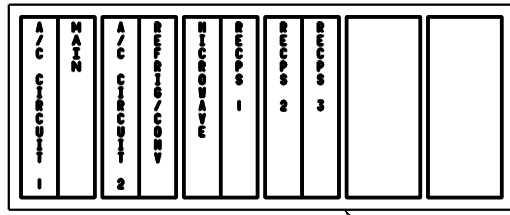
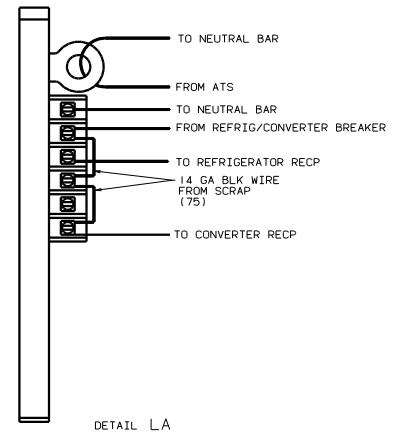
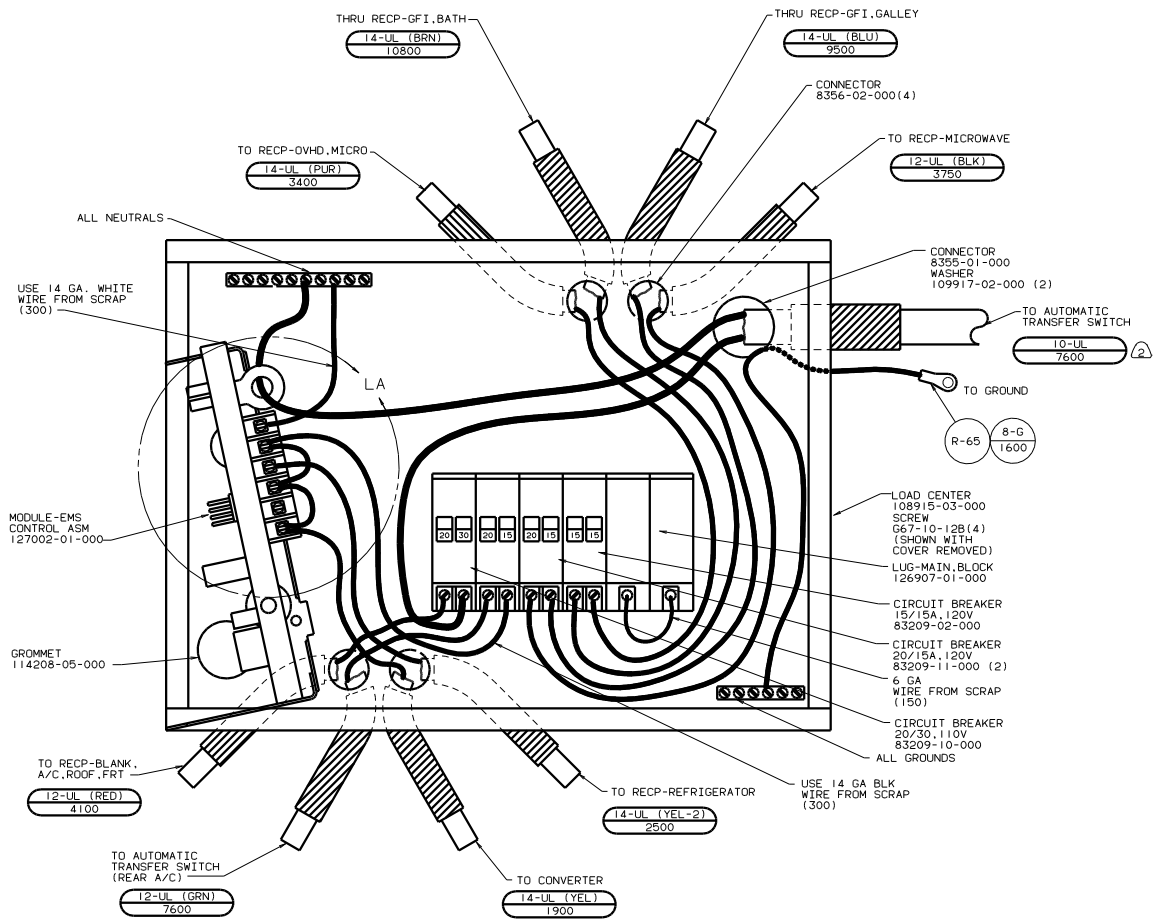
- 76C ENTERTAINMENT CTR/EXT CSETTE
- 49X BED-QUEEN-BACKWALL
- 45B BED-TWINS
- 292 A/C ROOF-HI EFFICIENCY
- 276 A/C ROOF-HI EFF (2) W/EMS
- 1D5 ENTERTAINMENT CTR-EXT-W/CD
- 1B1 CODES STANDARDS/USA
- 144 REFRIGERATOR-DOUBLE DOOR
- 120 ELECTRICAL SYSTEM 30 AMP

FOR ELECTRICAL TORQUE SPECIFICATIONS SEE DWG NO. 128783-01-000

FOR ELECTRICAL CALLOUTS SEE DWG NO. 121339-01-000

120 1B1 276	00 F35C
WIRING INSTL - BODY 110V(30US)	
SHEET 10 OF 17	
133673	

NOTES:



INSTALL LABEL ON FRONT PANEL BELOW BREAKERS BETWEEN MOUNTING HOLES

3. ALL CABLES SHALL BE COVERED WITH CONVOLUTE SLIT 41953-01-000 UNLESS OTHERWISE SPECIFIED. 600 LESS THAN CABLE LENGTH.

2. WIRE MUST BE 700 LONG INSIDE BOX.

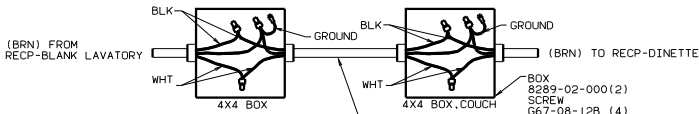
1. ALL GROUND WIRES TO BE COVERED WITH TUBING 8041-02-000.

NOTES:

- 276 A/C ROOF-HI EFF (2) W/EMS
- 181 CODES STANDARDS/USA
- 120 ELECTRICAL SYSTEM 30 AMP
- 09L SLIDEOUT ROOM-FRONT LEFT

FOR ELECTRICAL TORQUE SPECIFICATIONS SEE DWG NO. 128783-01-000

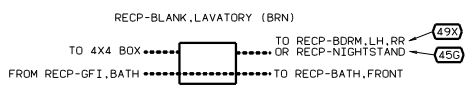
120 181 276 09L 00 F35C
 WIRING INSTL-BODY, 110V(LC30US)
 SHEET 11 OF 17 133673



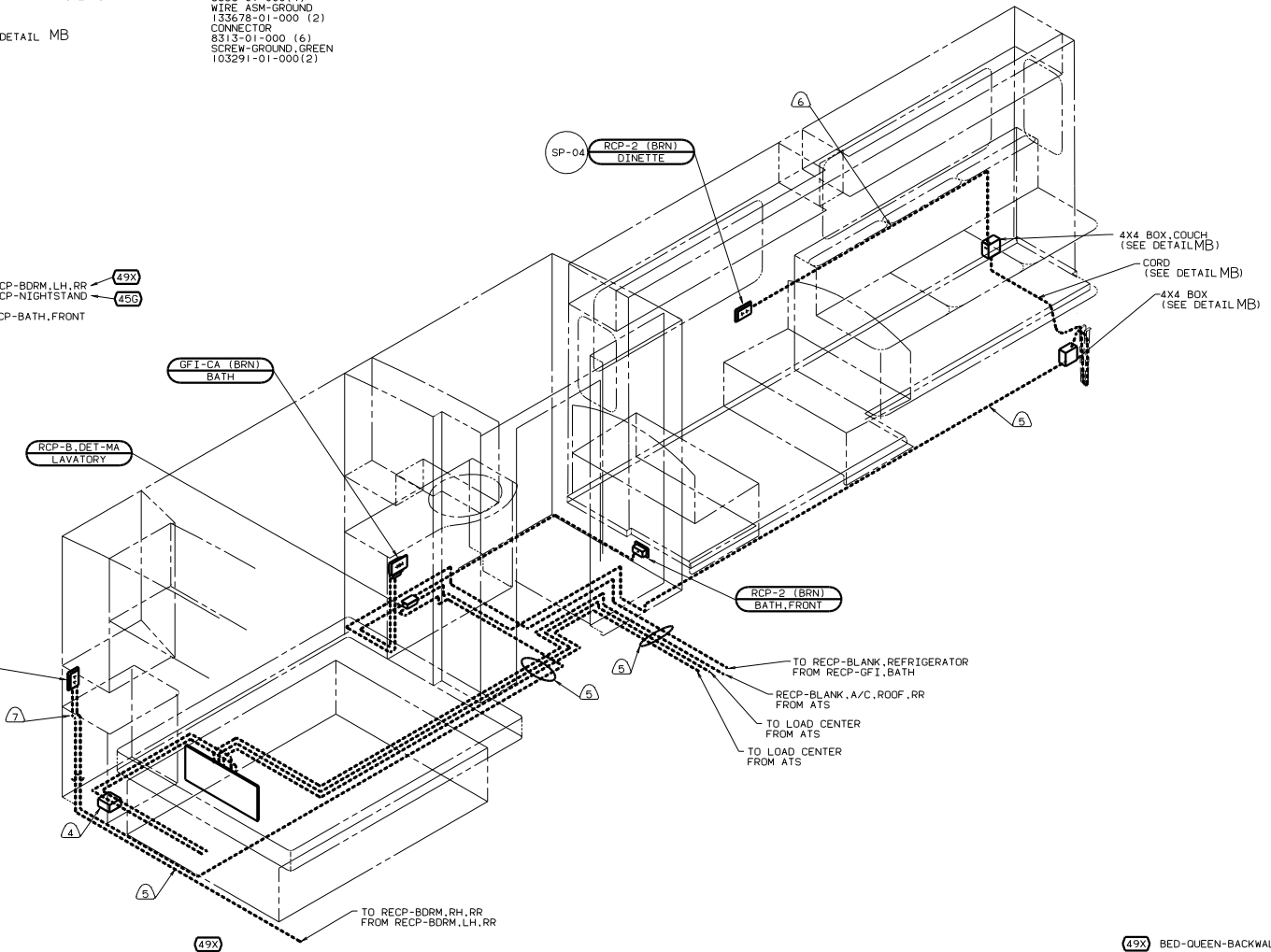
DETAIL MB

- BOX 8289-02-000(2)
- SCREW G67-08-12B (4)
- COVER 8294-02-000(2)
- CONNECTOR 8356-01-000(4)
- WIRE ASM-GROUND 133678-01-000 (2)
- CONNECTOR 8313-01-000 (6)
- SCREW-GROUND, GREEN 103291-01-000(2)

CORD-HEAVY DUTY
115832-01-000
(3200)



DETAIL MA



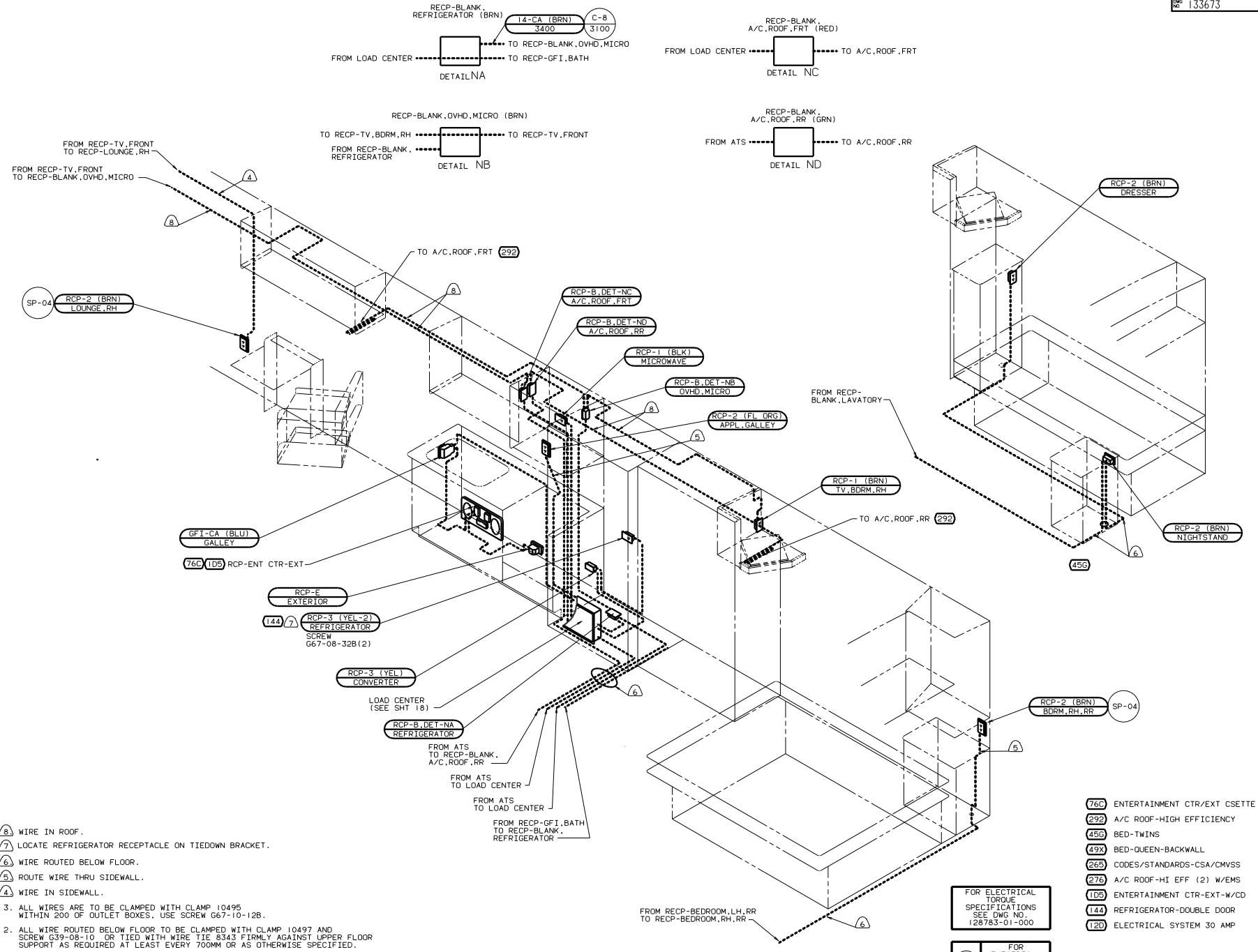
- 7 ROUTE WIRES THRU SIDEWALL.
- 6 WIRE IN SIDEWALL.
- 5 WIRE ROUTED BELOW FLOOR.
- 4 SEE GENERATOR INSTL FOR ADDITIONAL INFORMATION.
3. ALL WIRES ARE TO BE CLAMPED WITH CLAMP 10495 WITHIN 200 OF OUTLET BOXES. USE SCREW G67-10-12B.
2. ALL WIRE ROUTED BELOW FLOOR TO BE CLAMPED WITH CLAMP 10497 AND SCREW G39-08-10 OR TIED WITH WIRE TIE 8343 FIRMLY AGAINST UPPER FLOOR SUPPORT AS REQUIRED AT LEAST EVERY 700MM OR AS OTHERWISE SPECIFIED.
1. ALL WIRE ROUTED ABOVE FLOOR TO BE CLAMPED WITH CLAMP 10498 AND SCREW G67-10-12B OR TIED WITH WIRE TIE 8343 AS REQUIRED AT LEAST EVERY 700MM OR AS OTHERWISE SPECIFIED.

- 49X BED-QUEEN-BACKWALL
- 45G BED-TWINS
- 265 CODES/STANDARDS-CSA/CMVSS
- 120 ELECTRICAL SYSTEM 30 AMP
- 276 A/C ROOF-HI EFF (2) W/EMS
- 09L SLIDOUT ROOM-FRONT LEFT

FOR ELECTRICAL TORQUE SPECIFICATIONS SEE DWS NO. 128783-01-000	X-X	FOR ELECTRICAL CALLOUTS SEE DWS NO. 121339-01-000
--	-----	---

265	120	276	09L	00 F35C
WIRING INSTL-RDY, 110V(130CA)				
SHEET 12 OF 17				
133673				

NOTES:



- ⑧ WIRE IN ROOF.
- ⑦ LOCATE REFRIGERATOR RECEPTACLE ON TIEDOWN BRACKET.
- ⑥ WIRE ROUTED BELOW FLOOR.
- ⑤ ROUTE WIRE THRU SIDEWALL.
- ④ WIRE IN SIDEWALL.

3. ALL WIRES ARE TO BE CLAMPED WITH CLAMP 10495 WITHIN 200 OF OUTLET BOXES, USE SCREW G67-10-12B.
2. ALL WIRE ROUTED BELOW FLOOR TO BE CLAMPED WITH CLAMP 10497 AND SCREW G39-08-10 OR TIED WITH WIRE TIE 8343 FIRMLY AGAINST UPPER FLOOR SUPPORT AS REQUIRED AT LEAST EVERY 700MM OR AS OTHERWISE SPECIFIED.
1. ALL WIRE ROUTED ABOVE FLOOR TO BE CLAMPED WITH CLAMP 10498 AND SCREW G67-10-12B OR TIED WITH WIRE TIE 8343 AS REQUIRED AT LEAST EVERY 700MM OR AS OTHERWISE SPECIFIED.

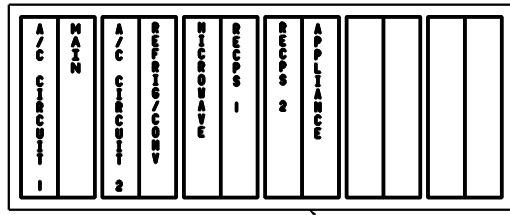
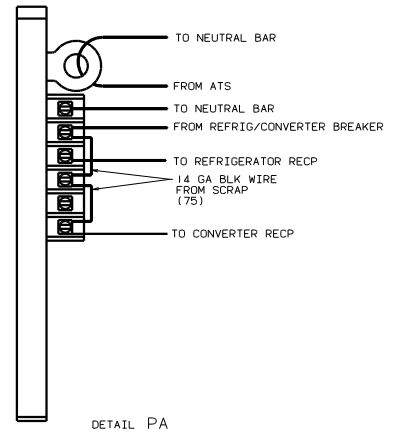
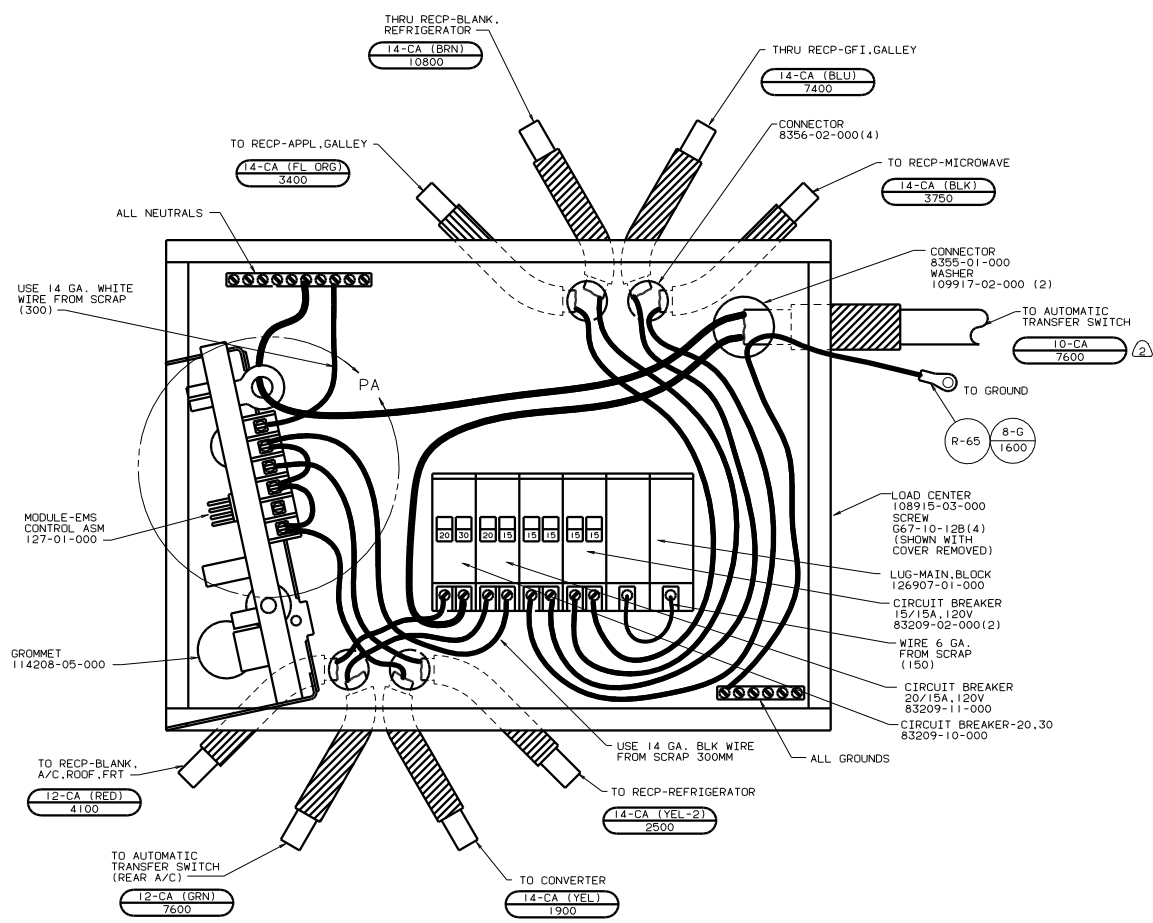
FOR ELECTRICAL TORQUE SPECIFICATIONS SEE DWG NO. 128783-01-000

FOR ELECTRICAL CALLOUTS SEE DWG NO. 121339-01-000

- 76C ENTERTAINMENT CTR/EXT CSETTE
- 292 A/C ROOF-HIGH EFFICIENCY
- 459 BED-TWINS
- 49X BED-QUEEN-BACKWALL
- 265 CODES/STANDARDS-CSA/CMVSS
- 276 A/C ROOF-HI EFF (2) W/EMS
- 105 ENTERTAINMENT CTR-EXT-W/CD
- 144 REFRIGERATOR-DOUBLE DOOR
- 120 ELECTRICAL SYSTEM 30 AMP

120	265	276	00 F35C
WIRING INSTL - BODY 110V (R30CA)			133673
SHEET 13 OF 17		FIG 1E	

NOTES:



3. ALL CABLES SHALL BE COVERED WITH CONVOLUTE SLIT 41953-01-000 UNLESS OTHERWISE SPECIFIED. 600 LESS THAN CABLE LENGTH.

2. WIRE MUST BE 700 LONG INSIDE BOX.

1. ALL GROUND WIRES TO BE COVERED WITH TUBING 8041-02-000.

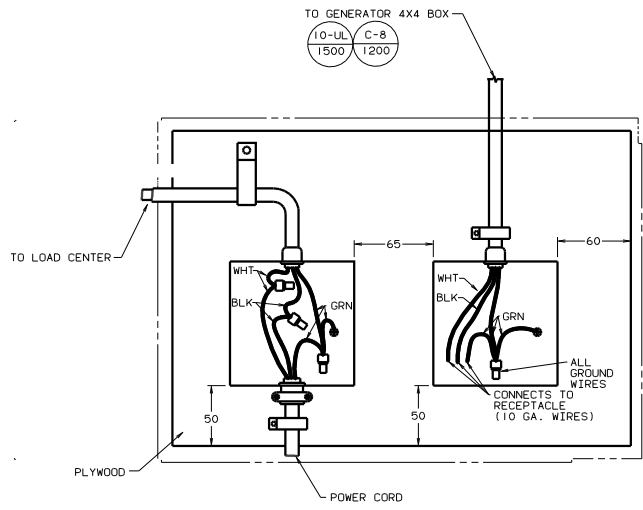
INSTALL LABEL ON FRONT PANEL BELOW BREAKERS BETWEEN MOUNTING HOLES

- 265 CODES/STANDARDS-CSA/CMVSS
- 276 A/C ROOF-HI EFF (2) W/EMS
- 120 ELECTRICAL SYSTEM 30 AMP
- 09L SLIDEOUT ROOM-FRONT LEFT

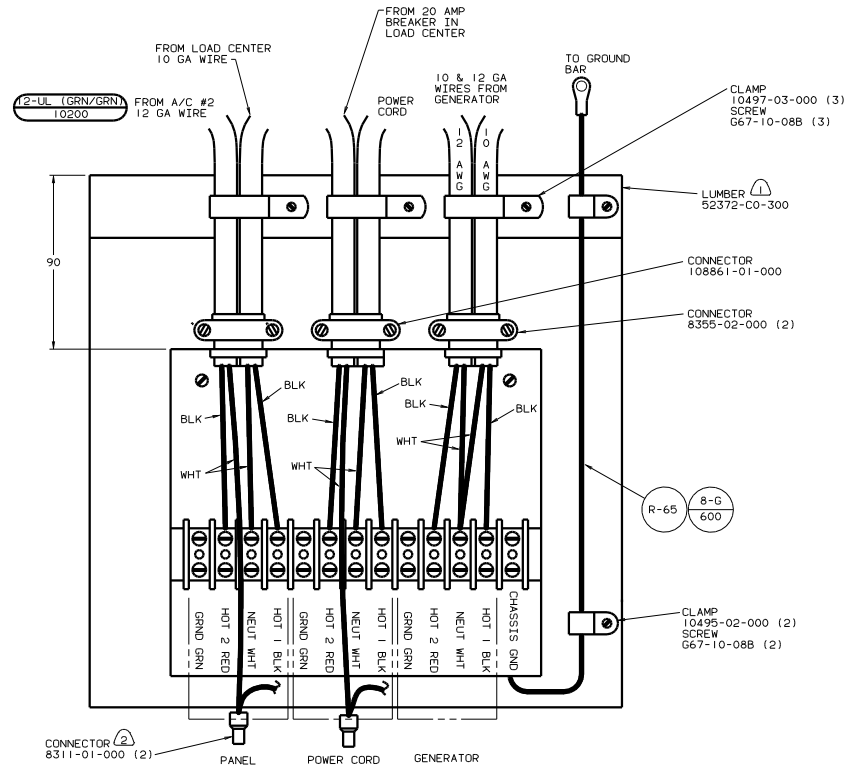
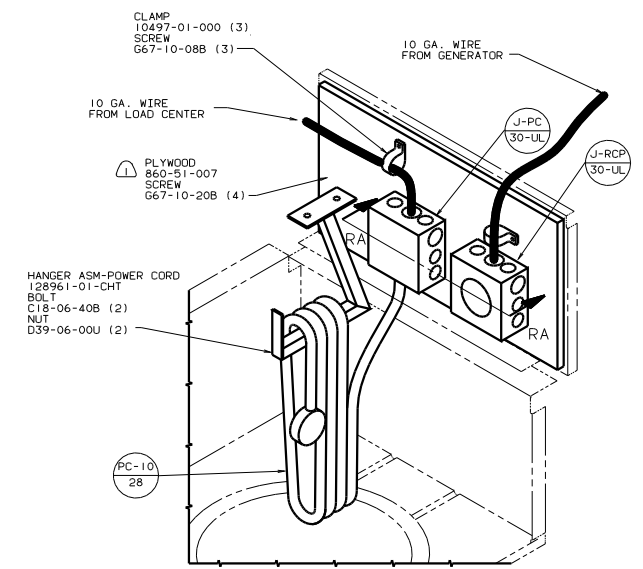
(X-X) FOR ELECTRICAL CALLOUTS SEE DWG NO. 121339-01-000

FOR ELECTRICAL TORQUE SPECIFICATIONS SEE DWG NO. 128783-01-000

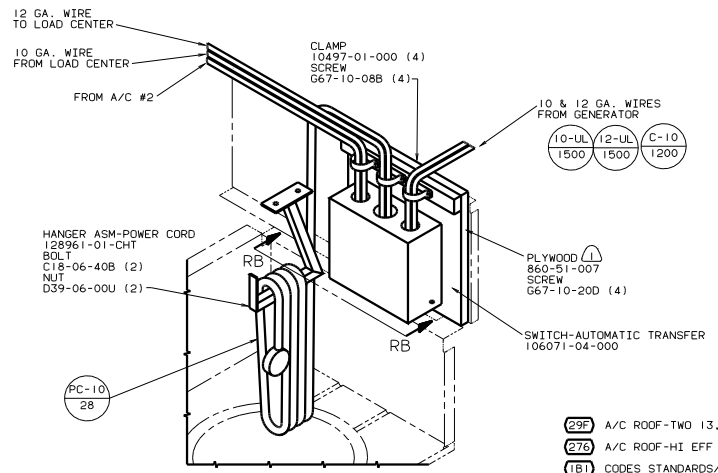
120 265 276 09L 00 F35C
 WIRING INSTL-BODY, 110V(LC30CA)
 SHEET 14 OF 17 133673



VIEW RA-RA (SHOWN WITH COVERS REMOVED)



VIEW RB-RB



- (29F) A/C ROOF-TWO 13,500 BTU
- (27E) A/C ROOF-HI EFF (2) W/EMS
- (1B1) CODES STANDARDS/USA
- (12D) ELECTRICAL SYSTEM 30 AMP

FOR ELECTRICAL TORQUE SPECIFICATIONS SEE DWG NO. 128783-01-000

X-X

FOR ELECTRICAL CALLOUTS SEE DWG NO. 121339-01-000

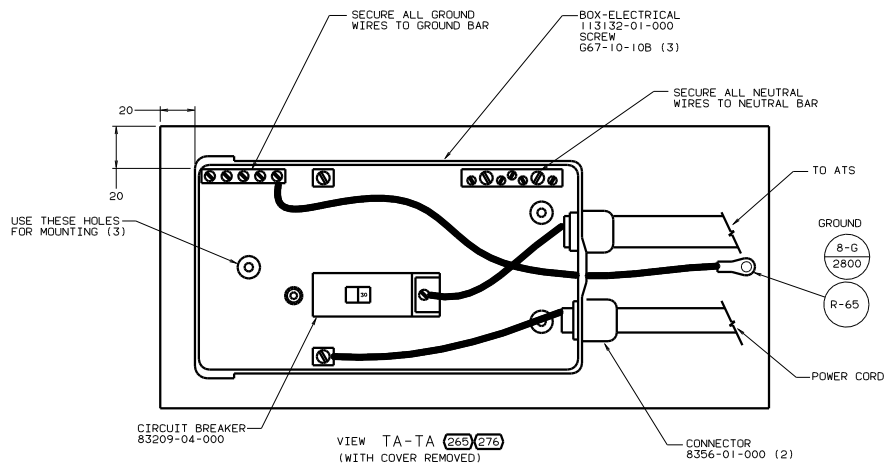
(12D) (1B1) 00 F35C

WIRING INSTL - BODY, 110V (PC/US)

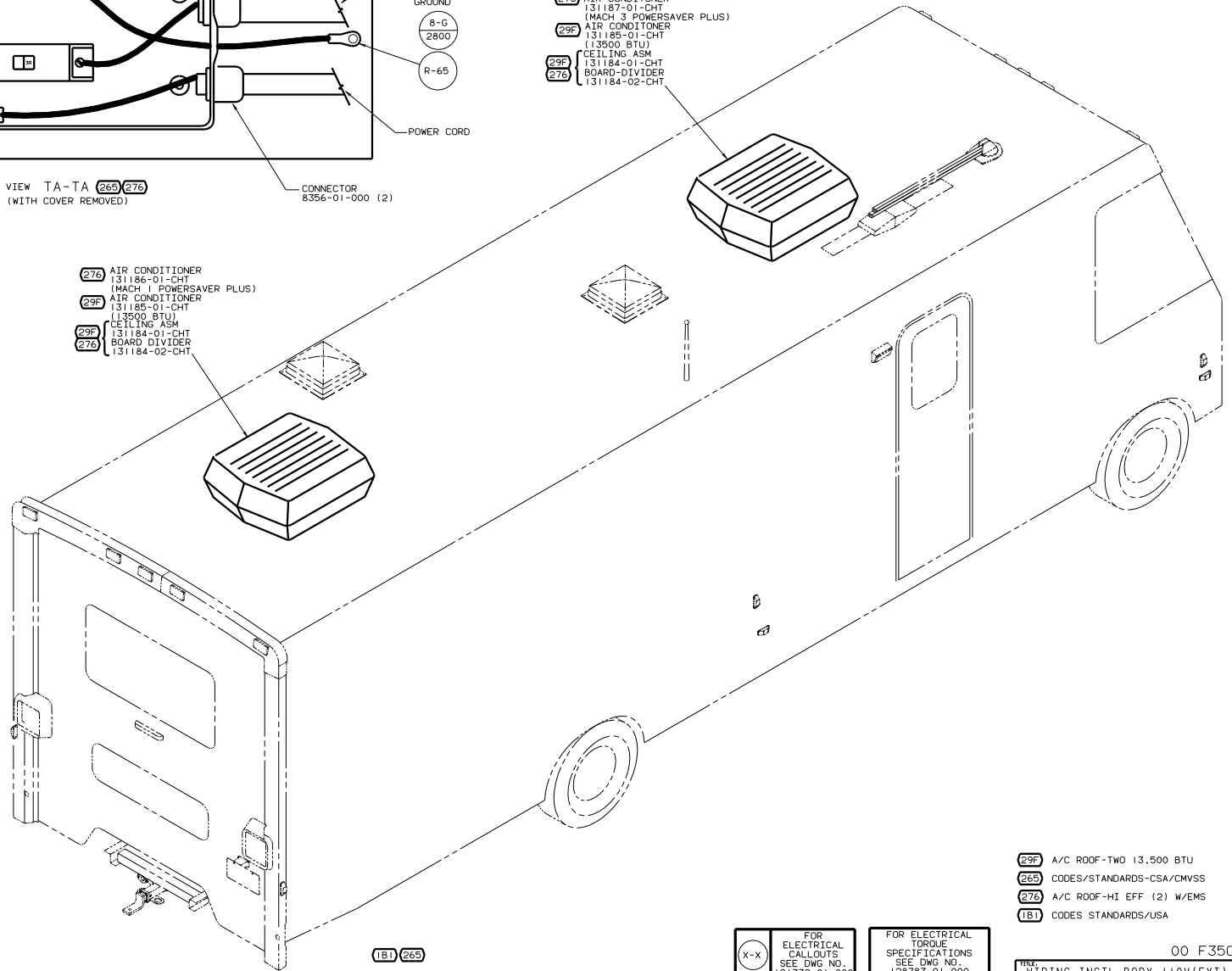
133673

(2) REMOVE MARKED WIRES AND RECONNECT AS SHOWN.

(1) PAINT EXPOSED SURFACES BLACK 106112-01-000.



- (276) AIR CONDITIONER 131187-01-CHT (MACH 3 POWERSAVER PLUS)
- (29F) AIR CONDITIONER 131185-01-CHT (13500 BTU)
- (29F) CEILING ASM 131184-01-CHT
- (276) BOARD-DIVIDER 131184-02-CHT



- (276) AIR CONDITIONER 131186-01-CHT (MACH 1 POWERSAVER PLUS)
- (29F) AIR CONDITIONER 131185-01-CHT (13500 BTU)
- (29F) CEILING ASM 131184-01-CHT
- (276) BOARD-DIVIDER 131184-02-CHT

(1B1) (265)

(X-X)
FOR ELECTRICAL CALLOUTS SEE DWG NO. 121339-01-000

FOR ELECTRICAL TORQUE SPECIFICATIONS SEE DWG NO. 126783-01-000

- (29F) A/C ROOF-TWO 13,500 BTU
- (265) CODES/STANDARDS-CSA/CMVSS
- (276) A/C ROOF-HI EFF (2) W/EMS
- (1B1) CODES STANDARDS/USA

00 F35C

TITLE		DRAWING NO.	
WIRING INSTL-BODY, LOW(EXT)		133673	
DATE	BY	CHK	APP
17/17			

NOTES: