



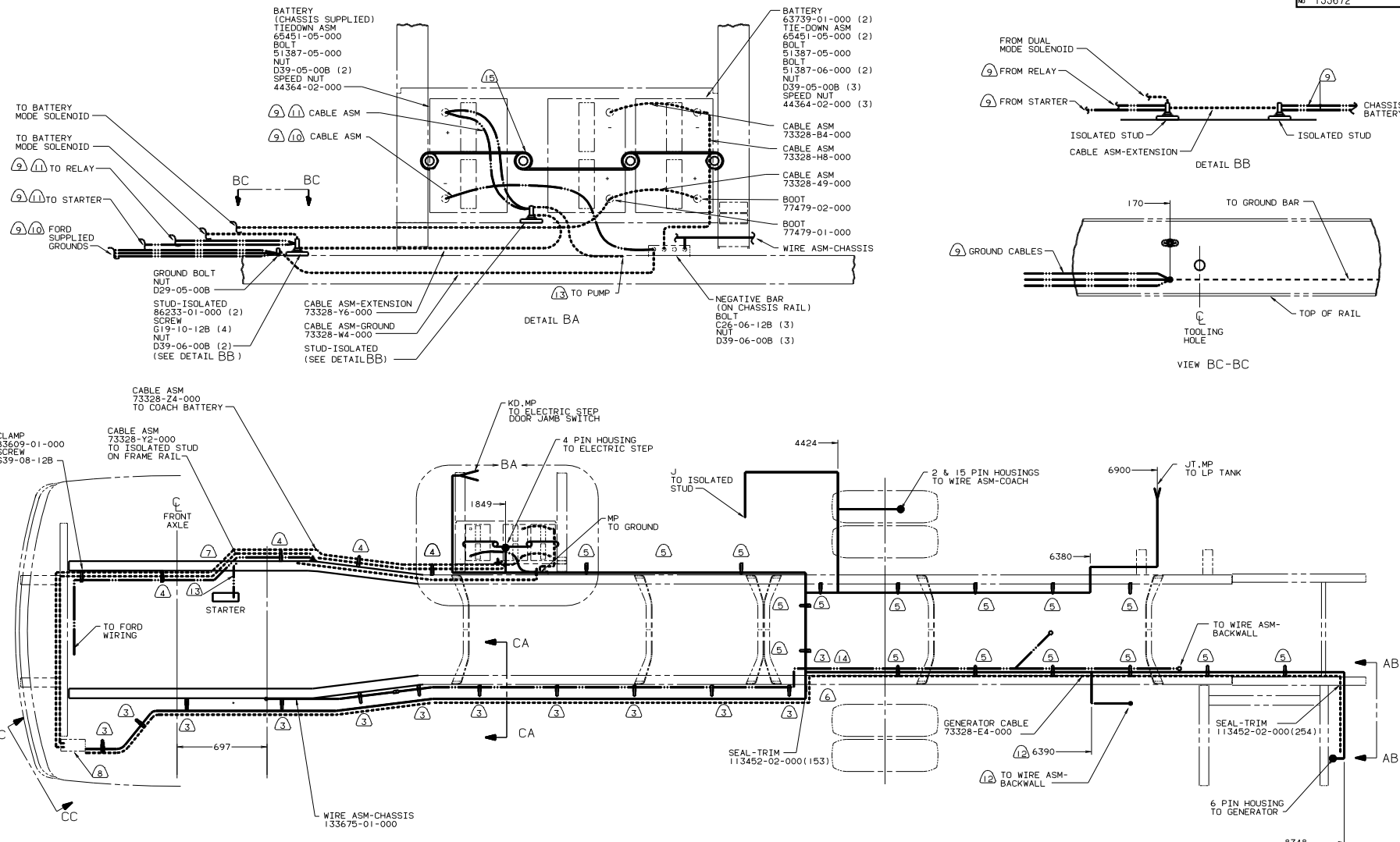
DANGER

Danger of electrical shock, burns or death. Always remove all power sources before attempting any repair, service or diagnostic work. Power can be present from shore power, generator, inverter or battery. All power sources must be disabled and secured before performing any service.



CAUTION

If you lack the skills, tools or equipment to perform diagnostic or repair work leave such work to an authorized Winnebago Industries dealer or other qualified shop.



- 11 CUT 14GA WIRE, 6 & 4GA CABLES 500 MM FROM BATTERY TERMINAL. ADD TERMINAL 8331-01-000(2) TO 4GA CABLES AND TERMINAL 8350-01-000(2) TO 14GA WIRES & 6GA CABLES. CONNECT TERMINALS TO ISOLATED STUDS AS SHOWN IN DETAIL BB.
 - 10 TRIM CABLE TO 500MM. ADD TERMINAL 8348-01-000(2). INCLUDE ALL SMALL GROUND WIRES.
 - 9 SUPPLIED WITH CHASSIS.
 - 8 SEE WIRING INSTL-FRONT END FOR ADDITIONAL INFORMATION.
 - 7 HEAT SLEEVING IS NEEDED AROUND ENGINE BEGINNING AT 1900. LENGTH SHOULD BE 1200. PART # FOR 16G 87225-01-000. PART # FOR 1/0 GA 87225-02-000
 - 6 ROUTE WIRES AND CABLE OVER SPRING HANGER AND ON TOP OF CHASSIS RAIL AT THIS POINT.
 - 5 CLAMP 10497-03-000, SCREW G39-08-12B
 - 4 CLAMP 83609-01-000, SCREW G39-08-12B
 - 3 CLAMP 83610-01-000, SCREW G39-08-12B.
2. SECURE CONDUIT 41953-01-000, 41953-02-000 AND 41953-03-000 OVER ALL WIRES IN CONTACT WITH SHARP EDGES.
1. LEGEND: — WINNEBAGO, - - - - - CABLE, ——— CHASSIS SUPPLIED.

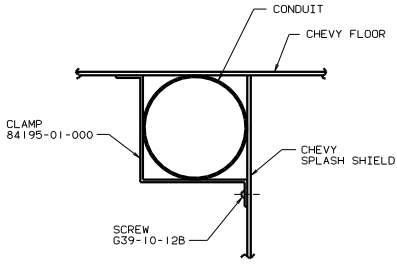
- 15 USE TWO NUTS HERE TO ACCOUNT FOR BATTERY HEIGHT DIFFERENCE.
- 14 ROUTE WIRES & CABLE INSIDE CHASSIS RAIL AT THIS POINT & TO THE REAR
- 13 BATTERY CABLE MUST BE INSTALLED TO STARTER MOTOR BEFORE ENGINE WIRING HARNESS AND ROUTED IN SUCH A MANNER AS TO PREVENT ANY POSSIBLE DEGRADATION FROM THE EXHAUST SYSTEM.
- 12 REROUTE FORD BACKWALL WIRING THRU FUEL FILL HOLE IN CHASSIS RAIL ON 208 TO 228 STRETCH UNITS.

FOR ELECTRICAL TORQUE SPECIFICATIONS SEE DWG NO. 128783-01-000

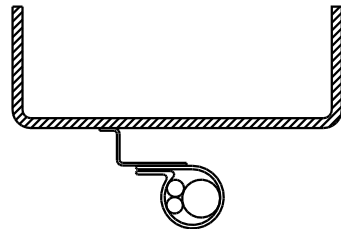
16H FORD CHASSIS 18.000/V10 ENG

00 F35C

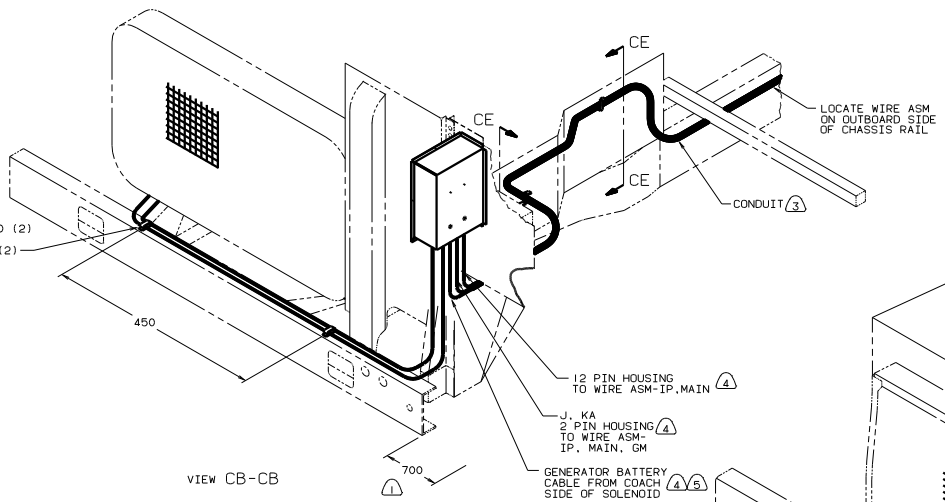
TITLE: WIRING INSTL-CHASSIS	
30 THE SCALE SHOWN	1:1
SHEET 2 OF 3	133672



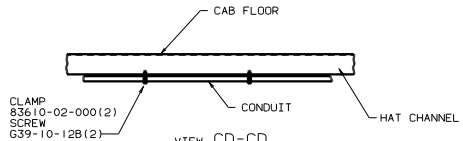
VIEW CE-CE



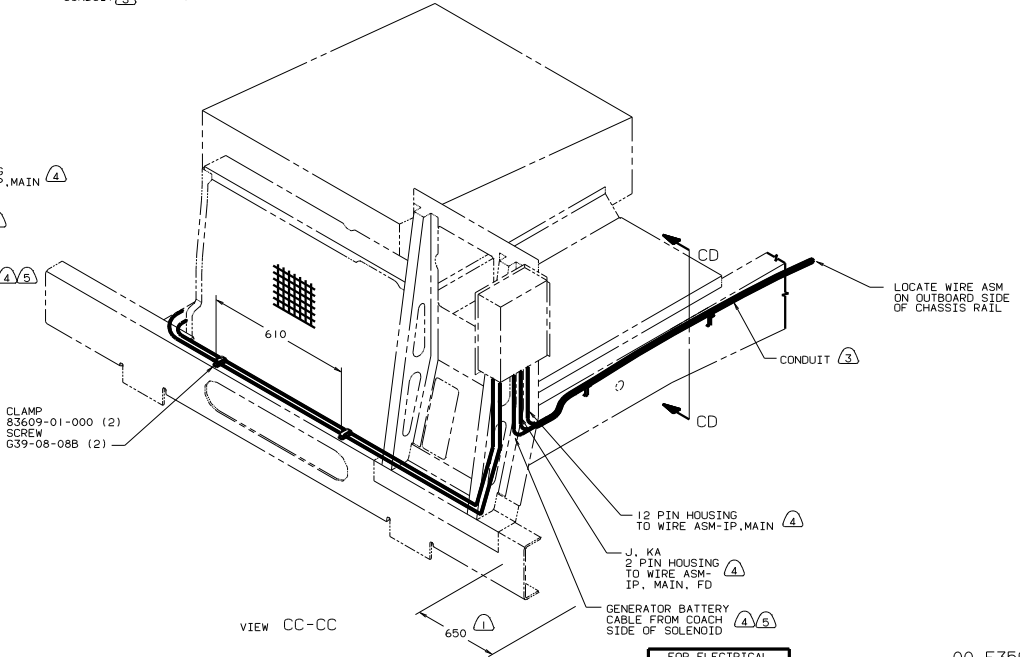
VIEW CA-CA



VIEW CB-CB



VIEW CD-CD



VIEW CC-CC

- NOTES:
- (5) CONNECT CABLES TO COACH SIDE OF BATTERY DISCONNECT WHEN BATTERY DISCONNECT IS USED.
 - (4) FOR ADDITIONAL INFORMATION SEE WIRING INSTALATION FRONT END.
 - (3) COVER WITH CONDUIT 41953-10-000 AND 41953-11-000 AS REQUIRED.
 - (2) SUPPLIED WITH CHASSIS.
 - (1) LAY BATTERY AND GENERATOR CABLES TO THIS DIMENSION FROM END OF CROSSMEMBER TO START INSTALLATION.

FOR ELECTRICAL TORQUE SPECIFICATIONS SEE DWG NO. 128783-01-000

00 F35C	
TITLE: WIRING INSTL-CHASSIS	
DRW NO. 133672	REV 1
SHEET 3 OF 3	1