



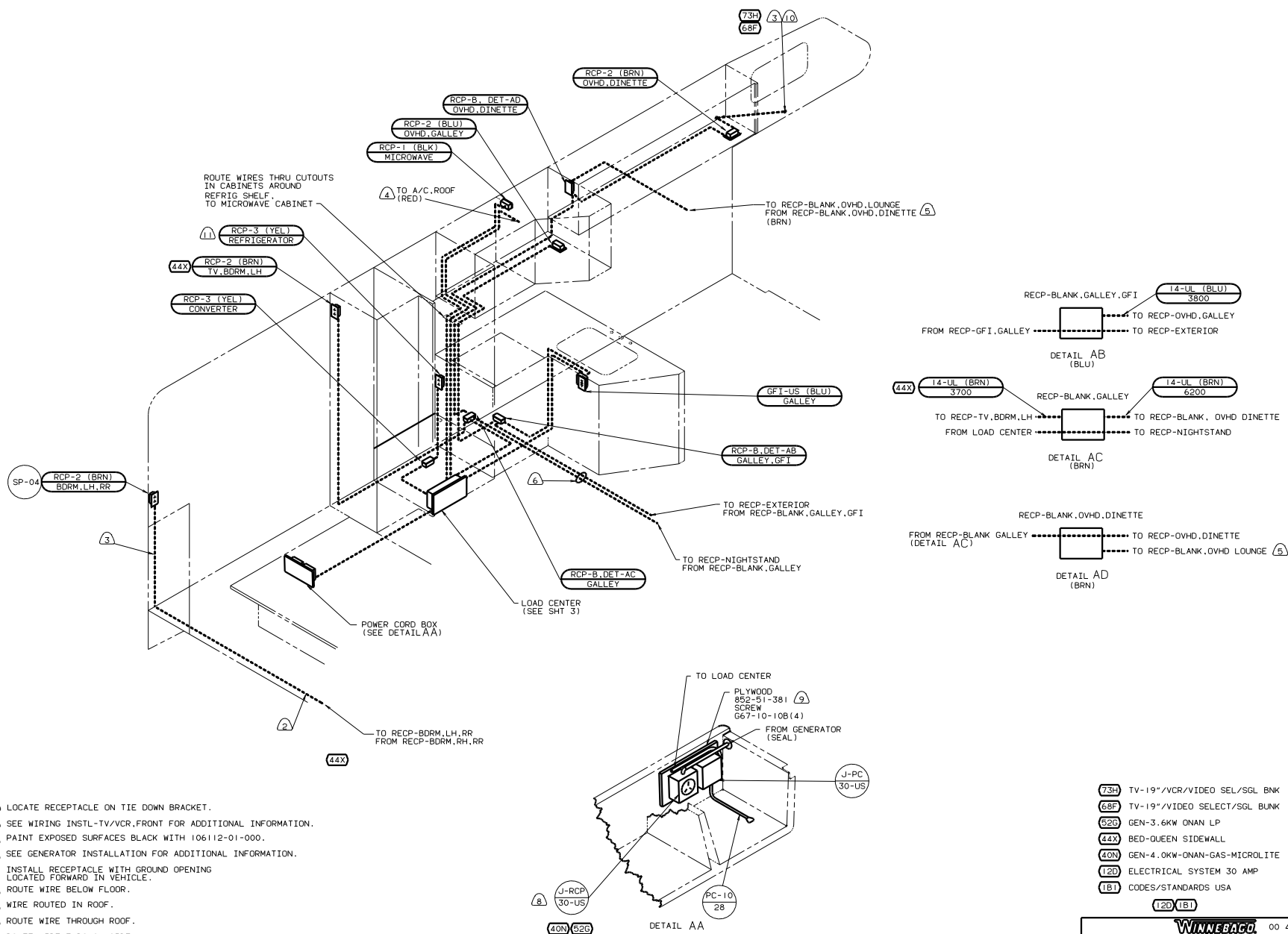
**DANGER**

**Danger of electrical shock, burns or death.** Always remove all power sources before attempting any repair, service or diagnostic work. Power can be present from shore power, generator, inverter or battery. All power sources must be disabled and secured before performing any service.



**CAUTION**

If you lack the skills, tools or equipment to perform diagnostic or repair work leave such work to an authorized Winnebago Industries dealer or other qualified shop.



- ④ LOCATE RECEPTACLE ON TIE DOWN BRACKET.
- ⑩ SEE WIRING INSTL-TV/VCR, FRONT FOR ADDITIONAL INFORMATION.
- ⑧ PAINT EXPOSED SURFACES BLACK WITH 106112-01-000.
- ⑨ SEE GENERATOR INSTALLATION FOR ADDITIONAL INFORMATION.
- ⑦ INSTALL RECEPTACLE WITH GROUND OPENING LOCATED FORWARD IN VEHICLE.
- ⑥ ROUTE WIRE BELOW FLOOR.
- ⑤ WIRE ROUTED IN ROOF.
- ④ ROUTE WIRE THROUGH ROOF.
- ③ ROUTE WIRE THROUGH SIDEWALL.
- ② ROUTE WIRE THROUGH FLOOR.

1. ALL CABLES TO BE SECURED WITH CLAMP 10495-01-000 OR CLIP 80734-01-000 EVERY 600MM, AND WITHIN 200MM OF A PANEL, BOX, OR FITTING. USE SCREW G67-10-12B PER CLAMP UNLESS OTHERWISE SPECIFIED.

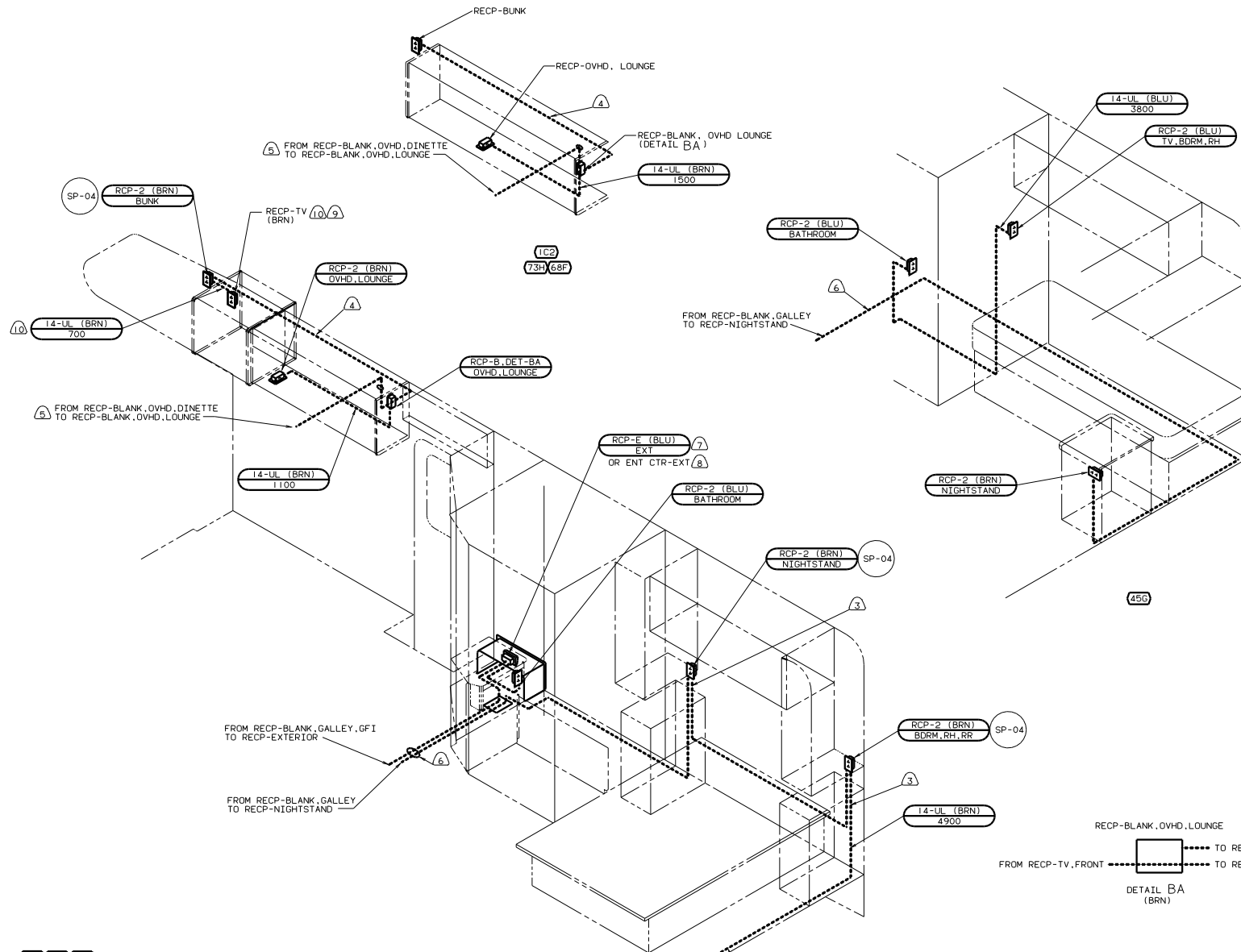
NOTES:

FOR ELECTRICAL  
TORQUE  
SPECIFICATIONS  
SEE DWG NO.  
128783-01-000

|     |   |
|-----|---|
| X-X | FOR<br>ELECTRICAL<br>CALLOUTS<br>SEE DWG NO.<br>121339-01-000 |
|-----|---|

|     |                              |
|-----|------------------------------|
| 73H | TV-19"/VCR/VIDEO SEL/SGL BNK |
| 68F | TV-19"/VIDEO SELECT/SGL BUNK |
| 52G | GEN-3.6KW ONAN LP            |
| 44X | BED-QUEEN SIDEWALL           |
| 40N | GEN-4.0KW-ONAN-GAS-MICROLITE |
| 12D | ELECTRICAL SYSTEM 30 AMP     |
| 1B1 | CODES/STANDARDS USA          |

|                                   |      |                              |          |         |        |
|-----------------------------------|------|------------------------------|----------|---------|--------|
|                                   |      | <b>WINNEBAGO</b>             |          | 00 429U |        |
| QTR                               | DATE | UNSPECIFIED TOLERANCE RAGE   | MATERIAL |         |        |
| CHWR                              | DATE | WALL GUN (X) 1               | 1        |         |        |
| P E                               | DATE | ONE-PLACE (X) 1              | 1        |         |        |
| M E                               | DATE | TWO-PLACE (X) 1              | 1        |         |        |
| CMR                               | DATE | INDLE                        | 1        |         |        |
| CMR                               | DATE | THIRD MILE PROJECTION        | 1        |         |        |
| LAYOUT                            |      | TITLE                        |          |         |        |
| ALL DIMENSIONS ARE IN MILLIMETERS |      | WIRING INSTL-BODY, 110 L30US |          |         |        |
| SHEET 1 OF 7                      |      | REV                          |          | DATE    | 133659 |



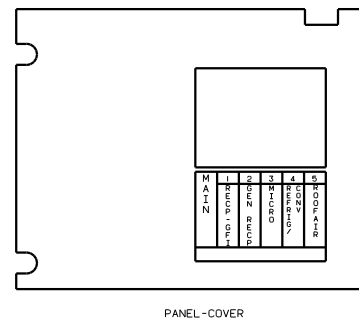
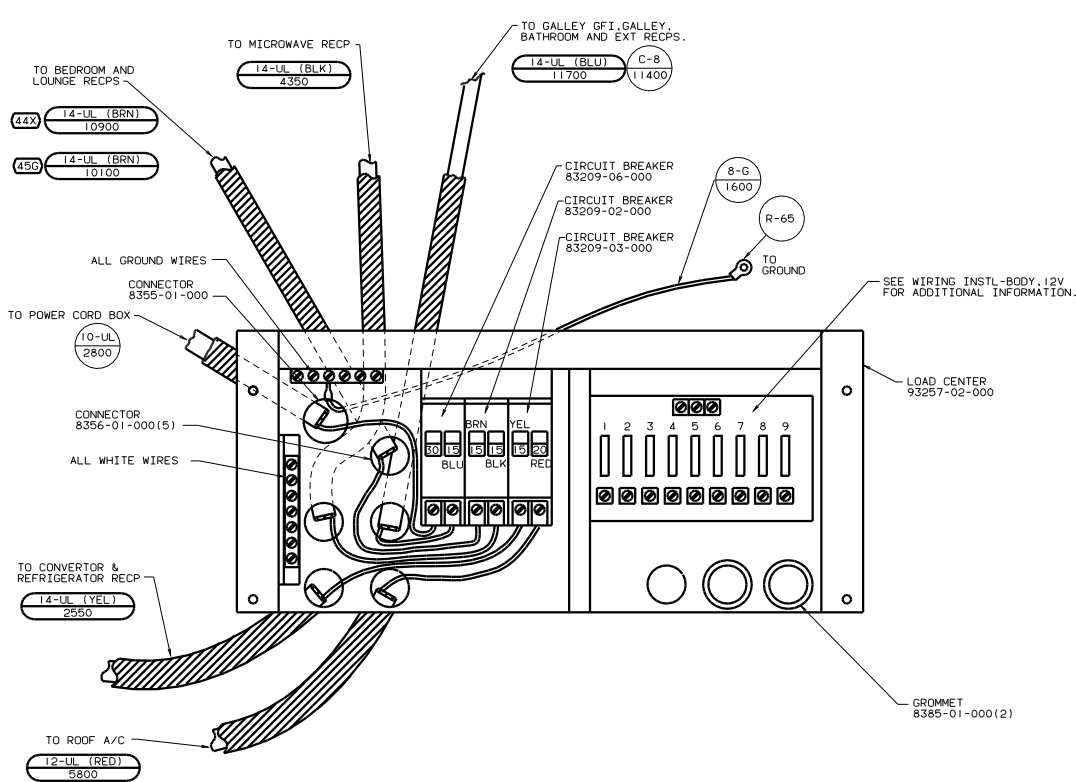
- ⑩ NOT USED WITH 78A 73H 68F
- ⑨ SEE WIRING INSTL-TV/VCR, SIDE FOR ADDITIONAL INFORMATION.
- ⑧ SEE ENTERTAINMENT CENTER-COMPL FOR ADDITIONAL INFORMATION.
- ⑦ NOT USED WITH 76C
- ⑥ ROUTE WIRE BELOW FLOOR.
- ⑤ WIRE ROUTED IN ROOF.
- ④ WIRE ROUTED IN SIDEWALL.
- ③ ROUTE WIRE THROUGH SIDEWALL.
- ② ROUTE WIRE THROUGH FLOOR.

1. ALL CABLES TO BE SECURED WITH CLAMP 10495-01-000 OR CLIP 80734-01-000 EVERY 600MM, AND WITHIN 200MM OF A PANEL, BOX, OR FITTING. USE SCREW 067-10-128 PER CLAMP UNLESS OTHERWISE SPECIFIED.

- 78A TV-13" W/VCP-12V
- 76C ENTERTAINMENT CTR/EXT CASSETTE
- 73H TV-19"/VCR/VIDEO SEL/SSL BKN
- 68F TV-19"/VIDEO SELECT/SSL BUNK
- 45G BED-TWINS
- 44X BED-QUEEN SIDEWALL
- 12D ELECTRICAL SYSTEM 30 AMP
- 1B1 CODES/STANDARDS USA
- 1B1 12D 00 429U

FOR ELECTRICAL  
TORQUE  
SPECIFICATIONS  
SEE DWG NO.  
128783-01-000

FOR  
ELECTRICAL  
CALLOUTS  
SEE DWG NO.  
121339-01-000



2. ALL GROUND WIRES TO BE COVERED WITH TUBING 8041-02-000.  
 1. ALL CABLES SHALL BE COVERED WITH CONDUIT-CONVOLUTE SLIT 41953-01-000, UNLESS OTHERWISE SPECIFIED, 600 LESS THAN CABLE LENGTH.

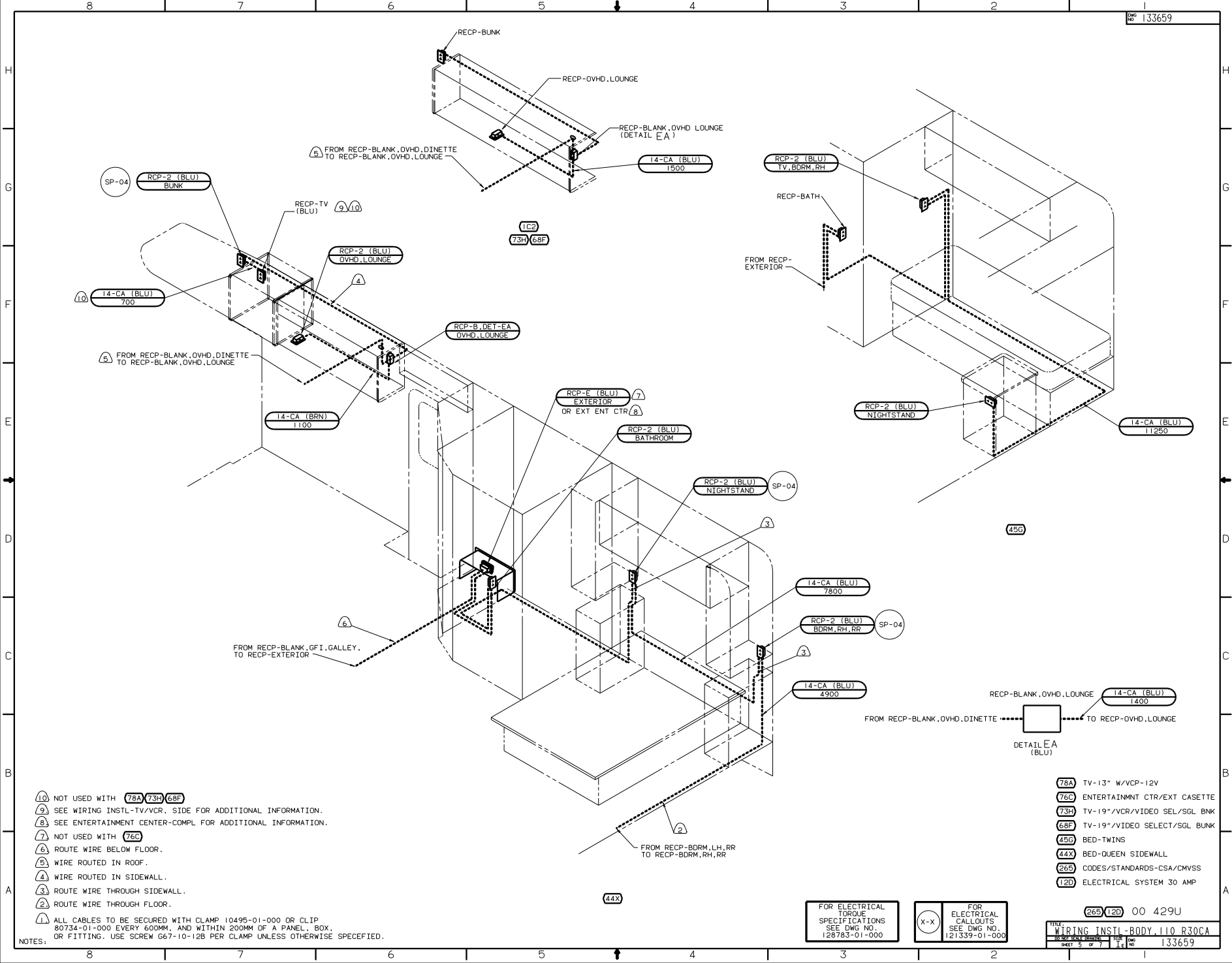
(45G) BED-TWINS  
 (44X) BED-QUEEN SIDEWALL  
 (12D) ELECTRICAL SYSTEM 30 AMP  
 (1B1) CODES/STANDARDS USA

FOR ELECTRICAL TORQUE SPECIFICATIONS SEE DWG NO. 128783-01-000

FOR ELECTRICAL CALLOUTS SEE DWG NO. 121339-01-000

(1B1) (12D) 00 429U  
 WIRING INSTL-BODY, 110 LC30US  
 SHEET 3 OF 7  
 133659





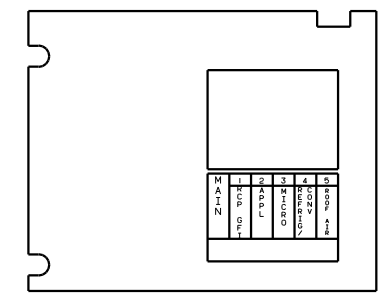
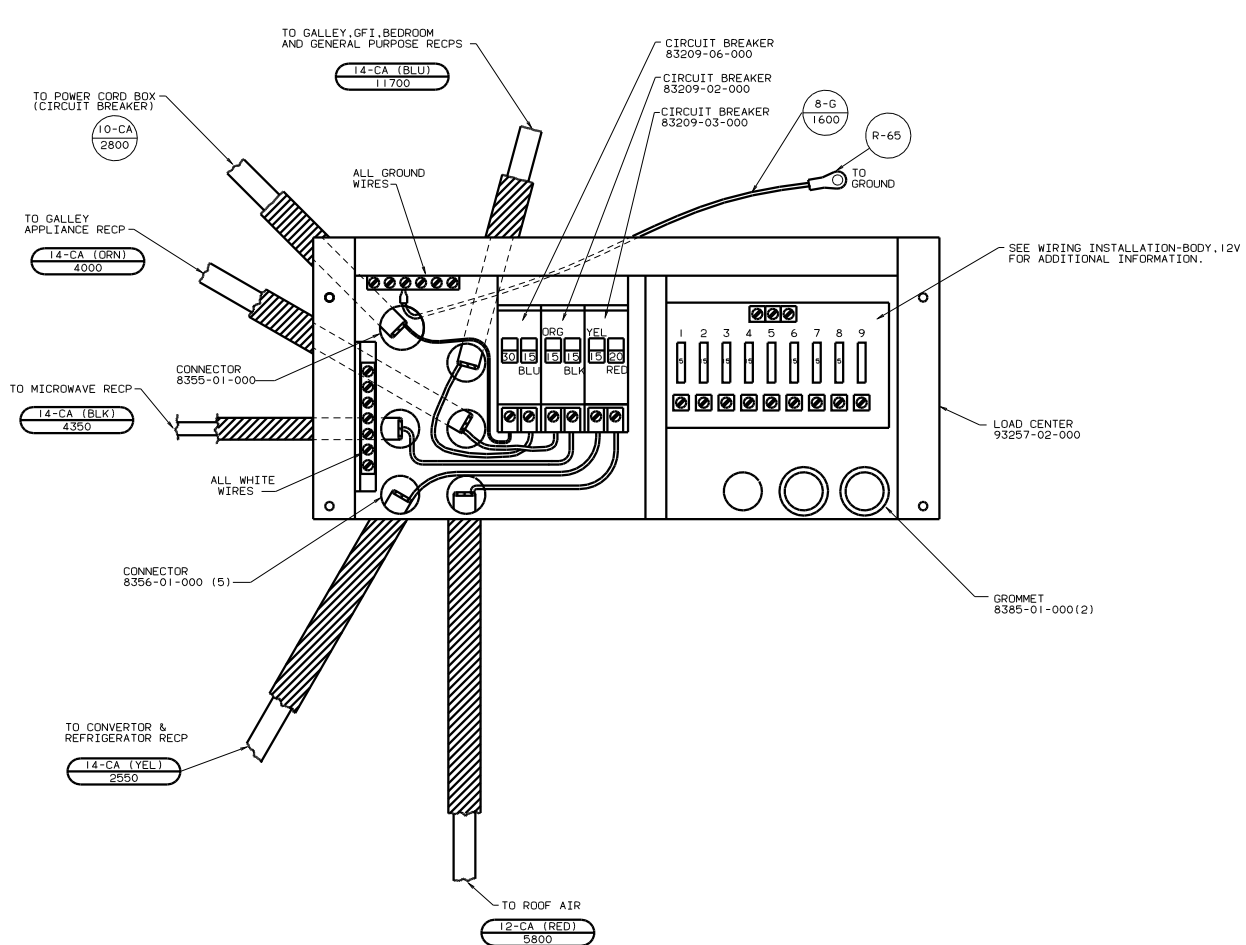
- 10 NOT USED WITH 78A 73H 68F  
9 SEE WIRING INSTL-TV/VCR, SIDE FOR ADDITIONAL INFORMATION.  
8 SEE ENTERTAINMENT CENTER-COMPL FOR ADDITIONAL INFORMATION.  
7 NOT USED WITH 76C  
6 ROUTE WIRE BELOW FLOOR.  
5 WIRE ROUTED IN ROOF.  
4 WIRE ROUTED IN SIDEWALL.  
3 ROUTE WIRE THROUGH SIDEWALL.  
2 ROUTE WIRE THROUGH FLOOR.  
1 ALL CABLES TO BE SECURED WITH CLAMP 10495-01-000 OR CLIP 80734-01-000 EVERY 600MM, AND WITHIN 200MM OF A PANEL, BOX, OR FITTING. USE SCREW G67-10-12B PER CLAMP UNLESS OTHERWISE SPECIFIED.

|     |                                |
|-----|--------------------------------|
| 78A | TV-13" W/VCP-12V               |
| 76C | ENTERTAINMENT CTR/EXT CASSETTE |
| 73H | TV-19"/VCR/VIDEO SEL/SGL BNK   |
| 68F | TV-19"/VIDEO SELECT/SGL BUNK   |
| 45G | BED-TWINS                      |
| 44X | BED-QUEEN SIDEWALL             |
| 265 | CODES/STANDARDS-CSA/CMVSS      |
| 120 | ELECTRICAL SYSTEM 30 AMP       |

FOR ELECTRICAL TORQUE SPECIFICATIONS SEE DWG NO. 128783-01-000

X-X

FOR ELECTRICAL CALLOUTS SEE DWG NO. 121339-01-000



PANEL-COVER

SEE WIRING INSTALLATION-BODY, 12V FOR ADDITIONAL INFORMATION.

LOAD CENTER 93257-02-000

GROMMET 8385-01-000(2)

- NOTES:
- ALL GROUND WIRES TO BE COVERED WITH TUBING 8041-02-000.
  - ALL CABLES SHALL BE COVERED WITH CONDUIT-CONVOLUTE SLIT 41953-01-000, UNLESS OTHERWISE SPECIFIED, 600 LESS THAN CABLE LENGTH.

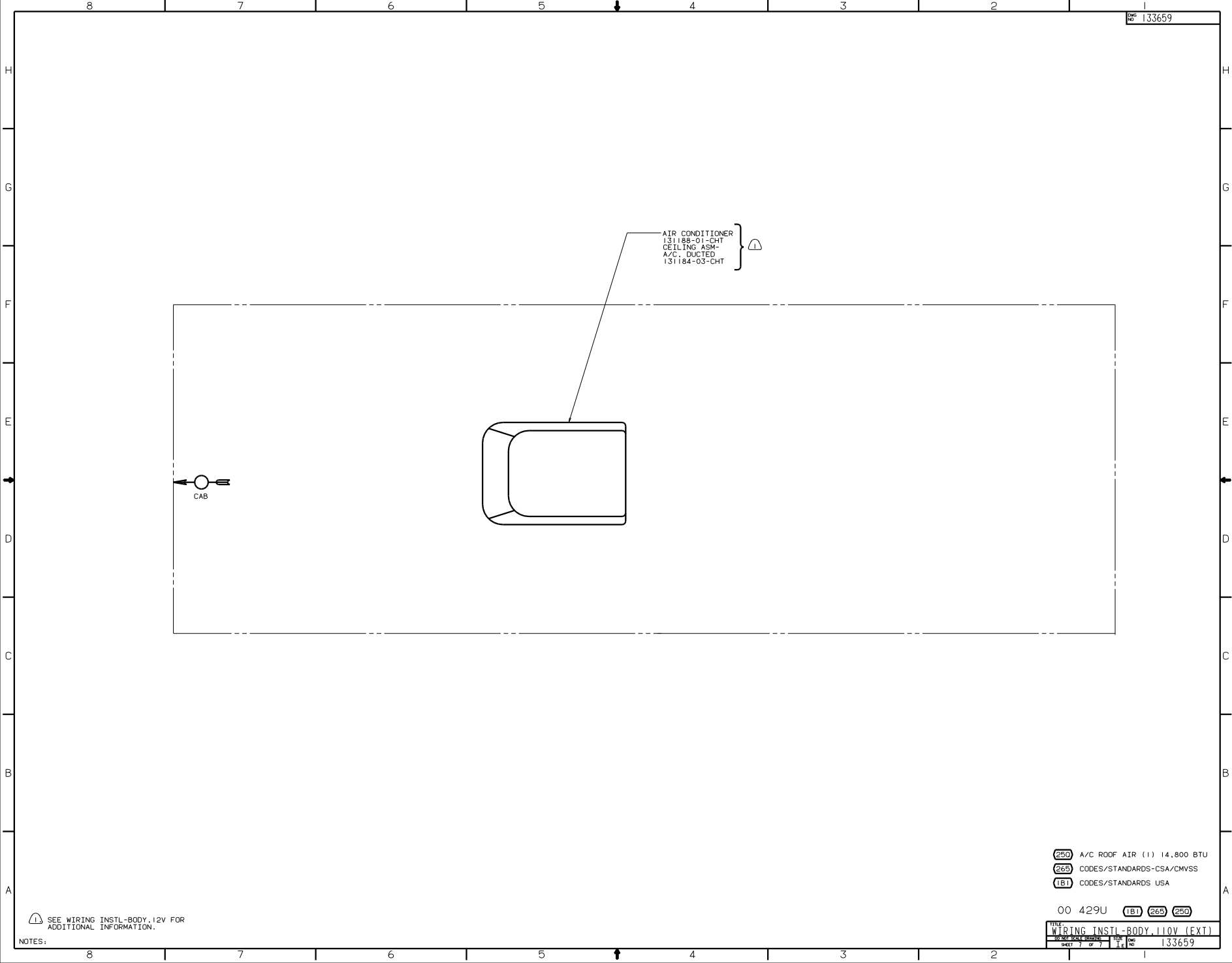
(265) CODES/STANDARDS-CSA/CMVSS  
(120) ELECTRICAL SYSTEM 30 AMP

(265) 00 429U

FOR ELECTRICAL TORQUE SPECIFICATIONS SEE DWG NO. 128783-01-000

FOR ELECTRICAL CALLOUTS SEE DWG NO. 121339-01-000

FILE: WIRING INSTL-BODY.110 LC30CA  
SHEET 5 OF 7  
133659



AIR CONDITIONER  
131188-01-CHT  
CEILING ASM-  
A/C, DUCTED  
131184-03-CHT



CAB

- (250) A/C ROOF AIR (1) 14,800 BTU
- (265) CODES/STANDARDS-CSA/CMVSS
- (181) CODES/STANDARDS USA

00 429U (181) (265) (250)

SEE WIRING INSTL-BODY, 12V FOR  
ADDITIONAL INFORMATION.

NOTES:

|         |       |                               |           |
|---------|-------|-------------------------------|-----------|
| TITLE   |       | WIRING INSTL-BODY, 110V (EXT) |           |
| NO. 250 | SCALE | REV                           | DATE      |
| SHEET 7 | OF 7  | 1E                            | NO 133659 |