



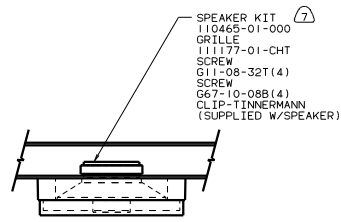
DANGER

Danger of electrical shock, burns or death. Always remove all power sources before attempting any repair, service or diagnostic work. Power can be present from shore power, generator, inverter or battery. All power sources must be disabled and secured before performing any service.

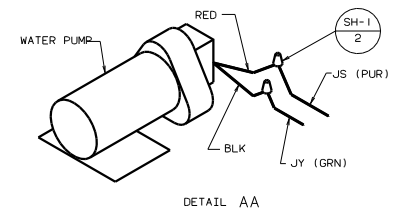
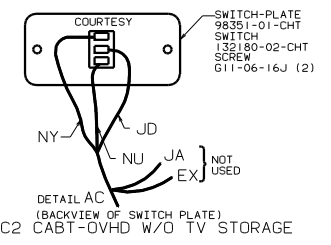
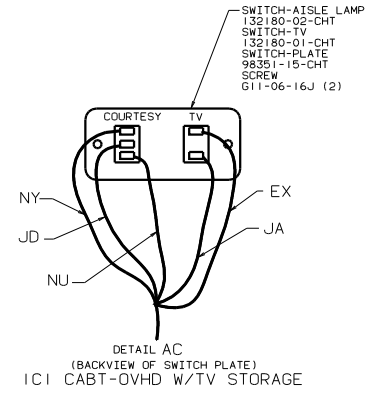
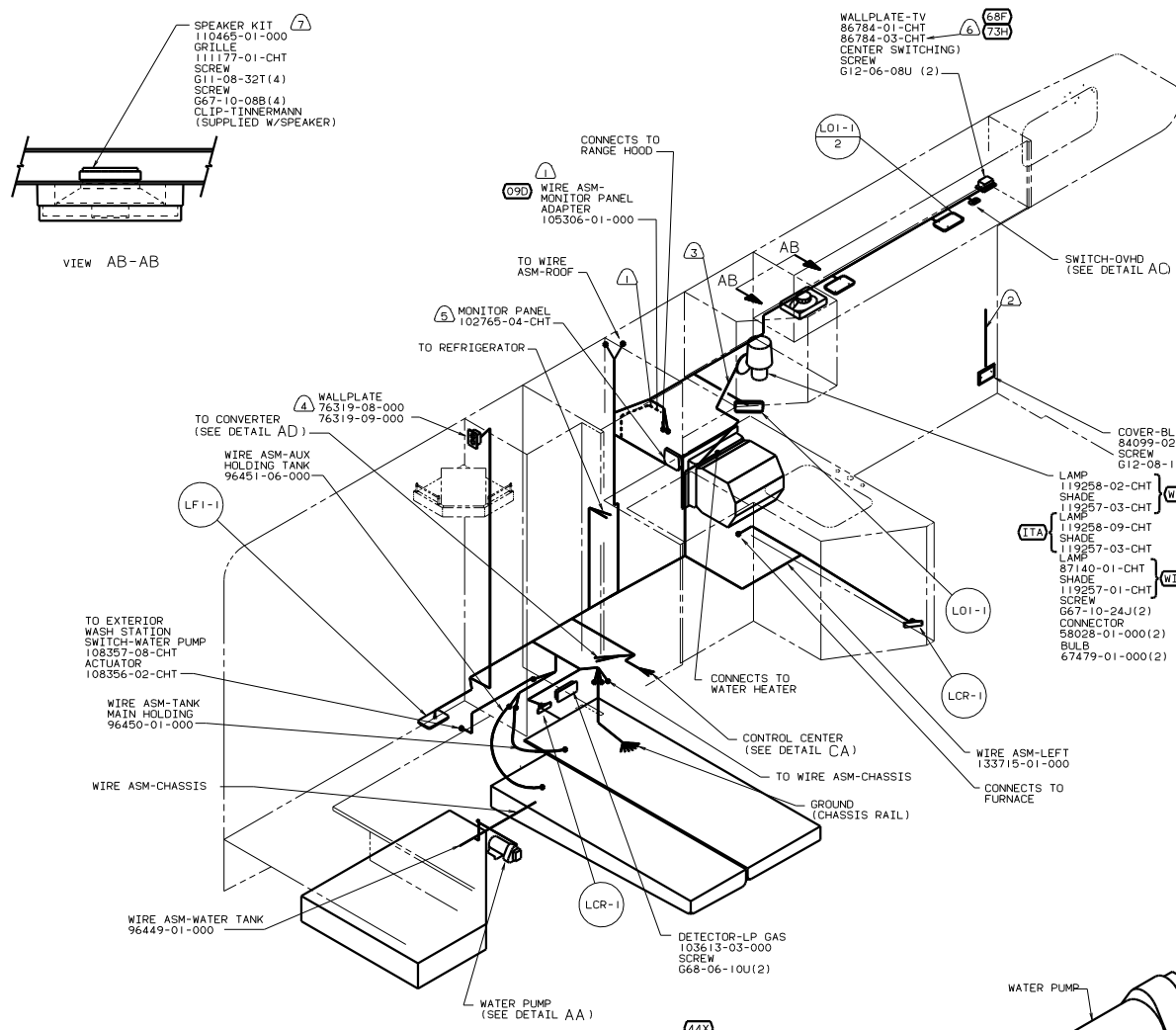
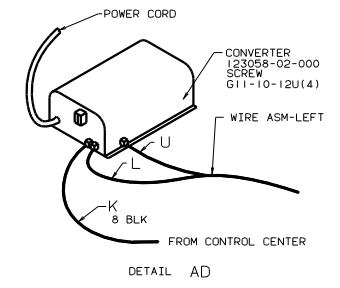
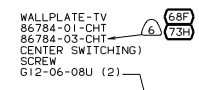


CAUTION

If you lack the skills, tools or equipment to perform diagnostic or repair work leave such work to an authorized Winnebago Industries dealer or other qualified shop.



VIEW AB-AB



- NOTES:
 ⑦ USE ONE OF THE 4 SPEAKER ASM'S PROVIDED IN KIT. SEND THE SCREWS IN THE KIT TO THE SURPLUS STORE TO BE SOLD. SEND THE WIRE ASM W/HSG TO WIRE PREP TO INCORPORATED INTO THE NECESSARY WIRE LOOM.
 ⑥ SEE WIRING INSTL-TV/VCR,FRONT FOR ADDITIONAL INFORMATION.
 ⑤ NOT USED WITH 09D
 ④ USE WITH DECORATIVE PANELING.
 ③ ROUTE WIRES THROUGH THE SIDEWALL.
 ② WIRES ROUTED THRU SIDEWALL.
 ① DASH LINE SHOWS MONITOR PANEL DROP ROUTING FOR DL PACKAGE.

FOR ELECTRICAL TORQUE SPECIFICATIONS SEE DWG NO. 128783-01-000

X-X

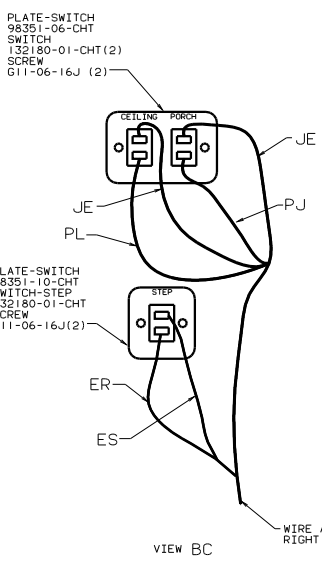
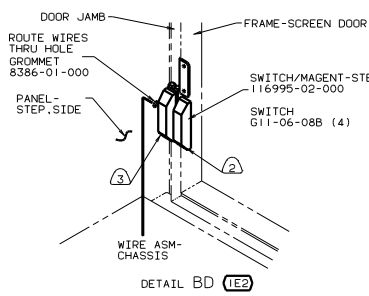
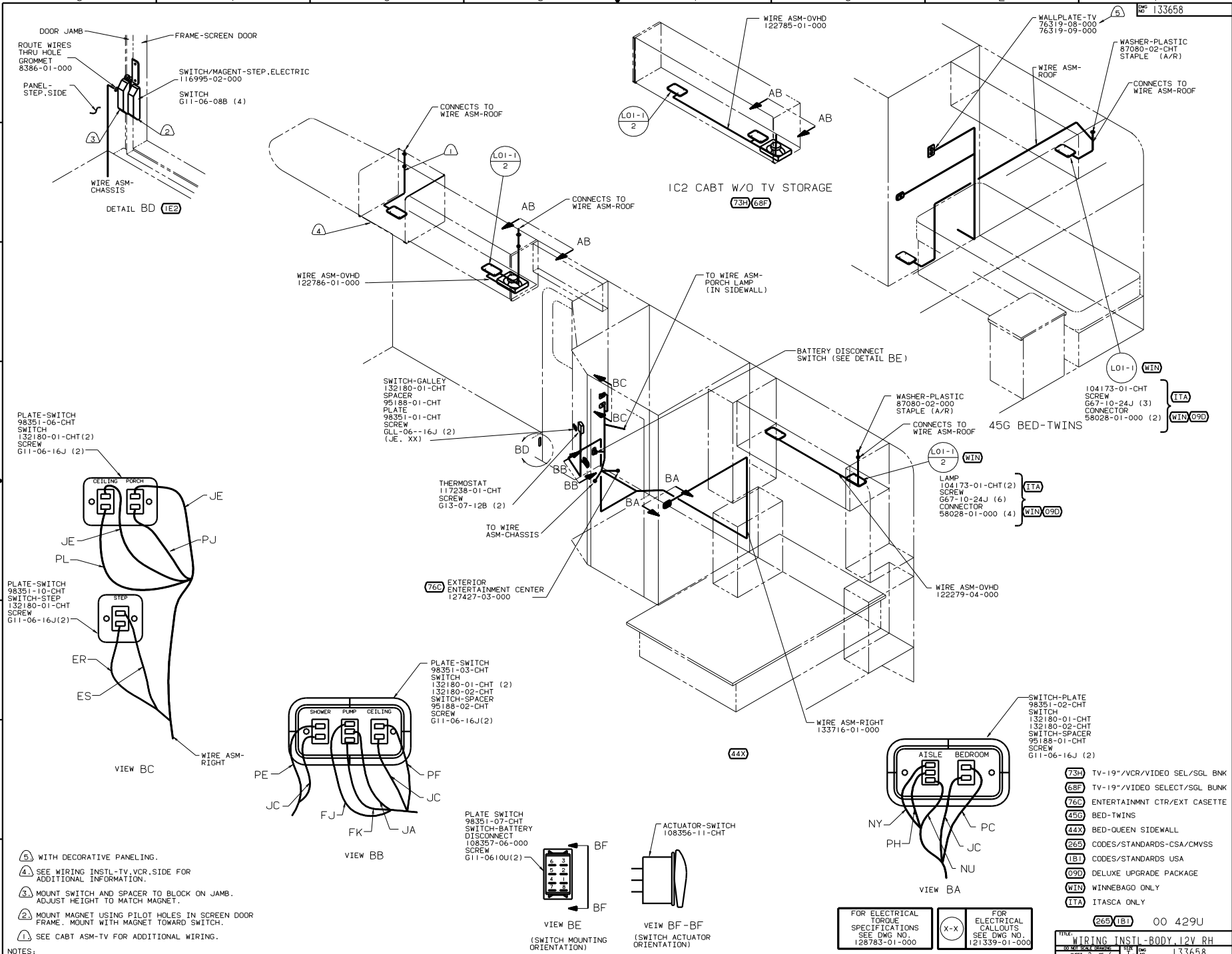
FOR ELECTRICAL CALCDUTS SEE DWG NO. 121339-01-000

- ④④X BED-QUEEN SIDEWALL
 ⑦3H TV-19"/VCR/VIDEO SEL/SGL BNK
 ⑥8F TV-19"/VIDEO SELECT/SGL BUNK
 ④0F INVERTER-DC/AC-130W
 ②6S CODES/STANDARDS-CSA/CMVSS
 ①B1 CODES/STANDARDS USA
 ①9D DELUXE UPGRADE PACKAGE
 W1N WINNEBAGO ONLY
 ①TA ITASCA ONLY

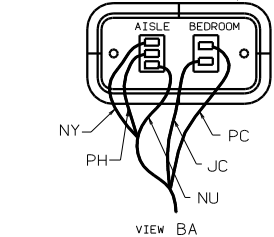
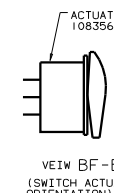
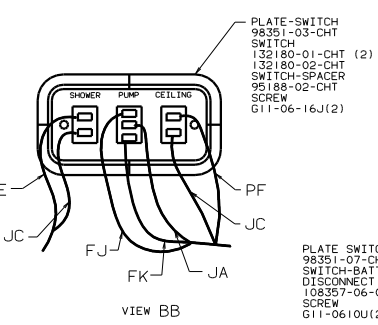
WINNEBAGO 00 429U

OF IN	DATE	UNSPECIFIED TOLERANCES ARE:	MATERIAL
OMP	DATE	WALL ORN (H)	
PIE	DATE	ONE-PLATE (H, H1)	
PIE	DATE	TWO-PLATE (H, H1)	
PIE	DATE	ANGLE	
COMP	DATE	INDIC. W/ANGLE PROJECTION	

TITLE: WIRING INSTL-BODY, 12V LH
 SHEET 1 OF 6
 133658



- ⑤ WITH DECORATIVE PANELING.
- ④ SEE WIRING INSTL-TV,VCR,SIDE FOR ADDITIONAL INFORMATION.
- ③ MOUNT SWITCH AND SPACER TO BLOCK ON JAMB. ADJUST HEIGHT TO MATCH MAGNET.
- ② MOUNT MAGNET USING PILOT HOLES IN SCREEN DOOR FRAME. MOUNT WITH MAGNET TOWARD SWITCH.
- ① SEE CABT ASM-TV FOR ADDITIONAL WIRING.



FOR ELECTRICAL TORQUE SPECIFICATIONS SEE DWG NO. 128783-01-000

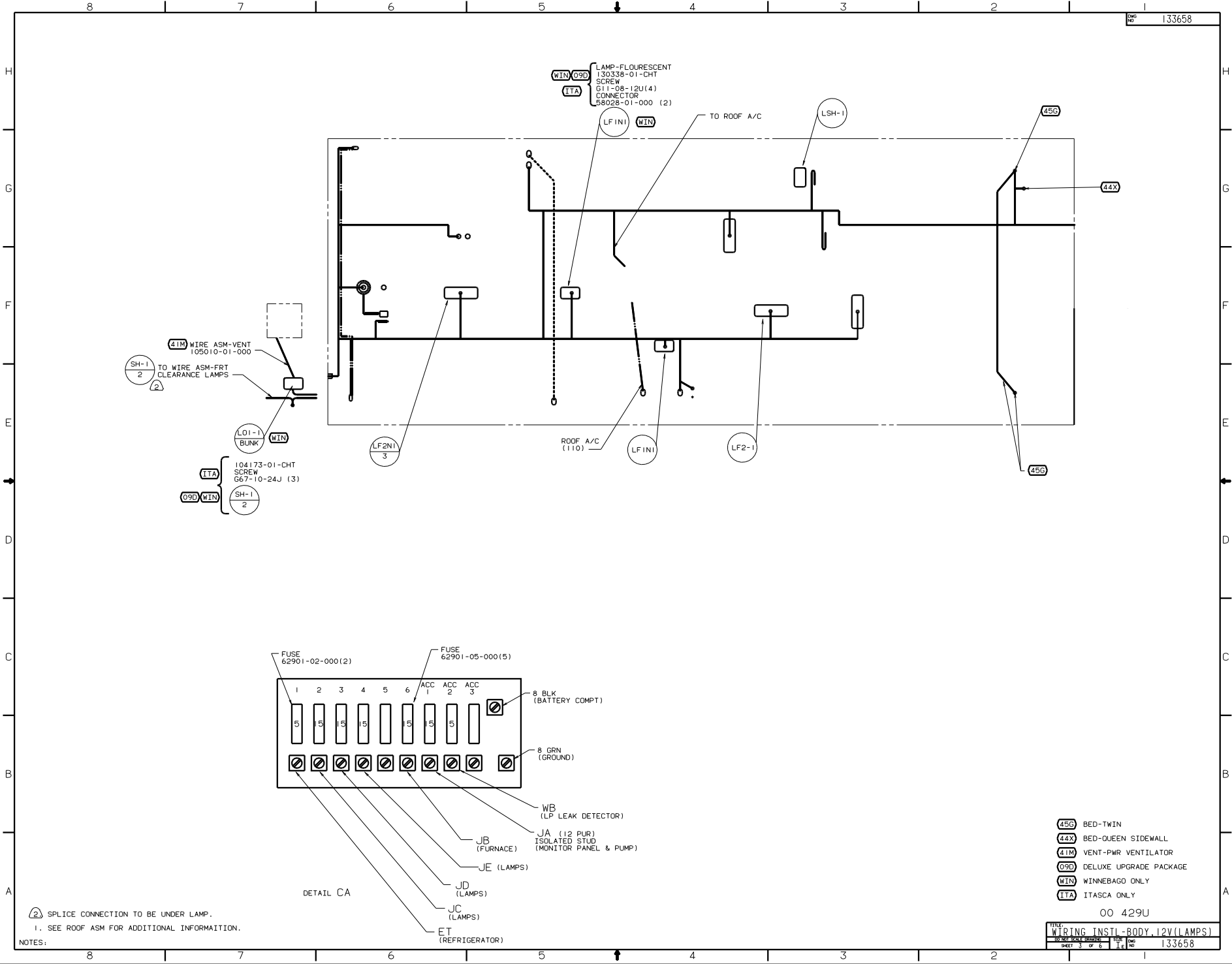
FOR ELECTRICAL CALLOUTS SEE DWG NO. 121339-01-000

②65 (1B1) 00 429U

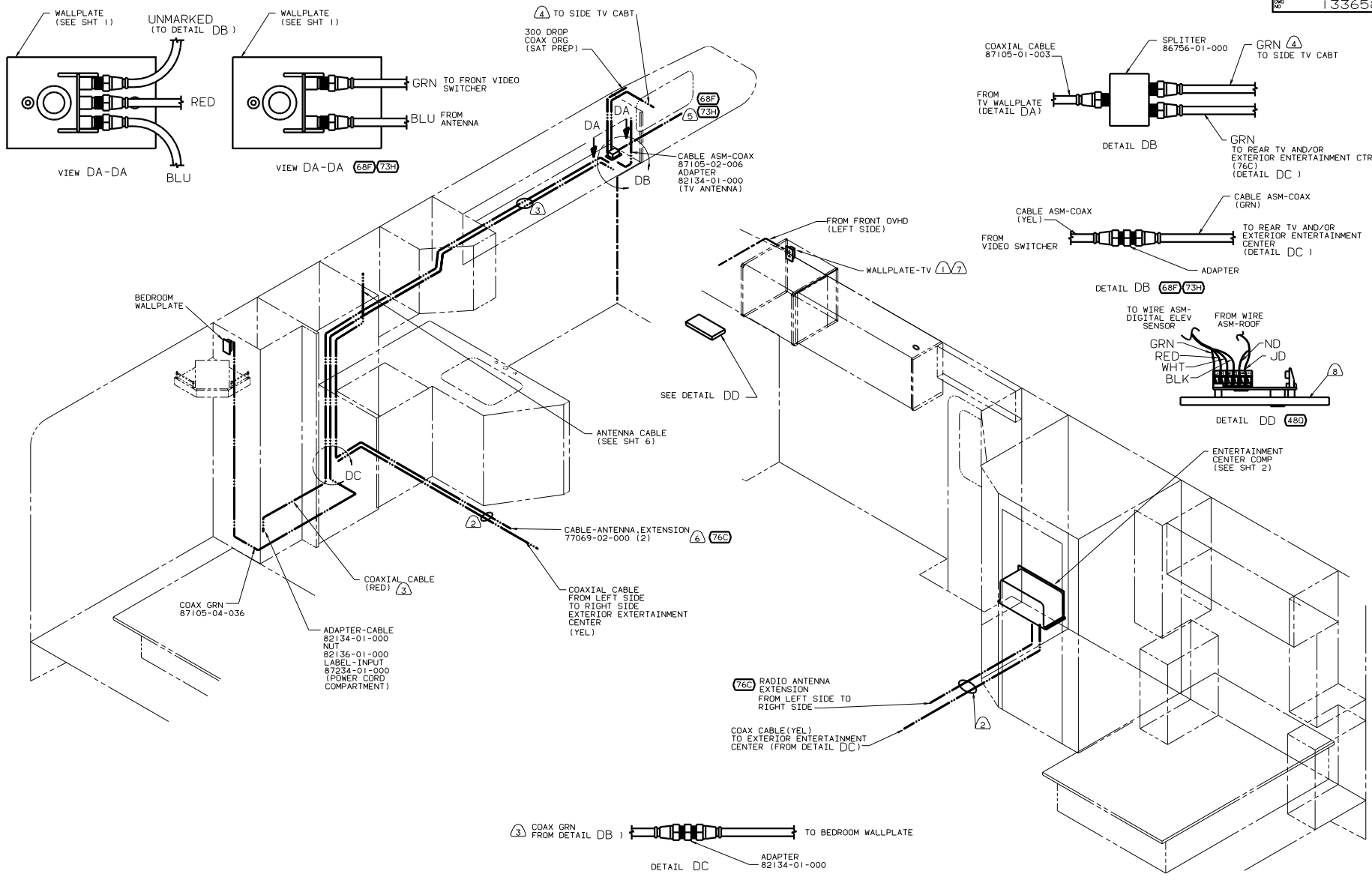
WIRING INSTL-BODY, 12V RH

133658

- ⑦3H TV-19"/VCR/VIDEO SEL/SQL BNK
- ⑥8F TV-19"/VIDEO SELECT/SQL BUNK
- ⑦6C ENTERTAINMENT CTR/EXT CASSETTE
- ④5G BED-TWINS
- ④4X BED-QUEEN SIDEWALL
- ②65 CODES/STANDARDS-CSA/CMVSS
- ①B1 CODES/STANDARDS USA
- ②9D DELUXE UPGRADE PACKAGE
- ①1N WINNEBAGO ONLY
- ①TA ITASCA ONLY



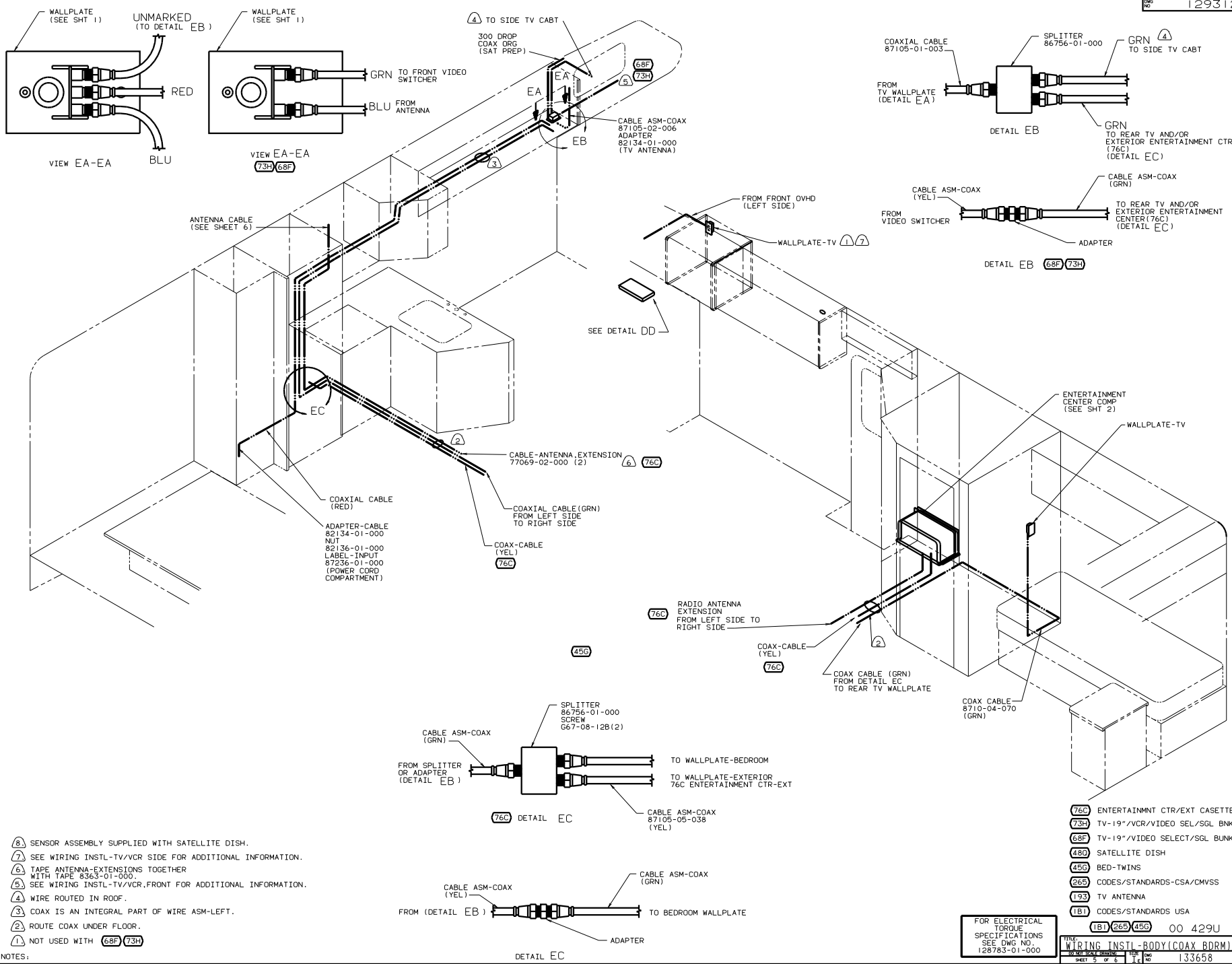
NOTES:
 ② SPLICE CONNECTION TO BE UNDER LAMP.
 1. SEE ROOF ASM FOR ADDITIONAL INFORMATION.



- 8) SENSOR ARM SUPPLIED WITH 48D SATELLITE DISH.
- 7) SEE WIRING INSTL-TV/VCR,SIDE FOR ADDITIONAL INFOAION.
- 6) TAPE ANTENNA-EXTENSIONS TOGETHER WITH TAPE 8363-01-000.
- 5) SEE WIRING INSTL-TV/VCR,FRONT FOR ADDITIONAL INFORMATION.
- 4) WIRE ROUTED IN ROOF.
- 3) COAX IS AN INTEGRAL PART OF WIRE ASM-LEFT.
- 2) ROUTE COAX UNDER FLOOR.
- 1) NOT USED WITH (68F 73H)

FOR ELECTRICAL TORQUE SPECIFICATIONS SEE DWG NO. 128783-01-000

(73H)	TV-19"/VCR/VIDEO SEL/SGL BNK
(68F)	TV-19"/VIDEO SELECT/SGL BUNK
(48D)	SATELLITE DISH
(44X)	BED-QUEEN SIDEWALL
(265)	CODES/STANDARDS-CSA/CMVSS
(193)	TV ANTENNA
(181)	CODES/STANDARDS USA
(181) (44X) (265)	00 429U



- ⑧ SENSOR ASSEMBLY SUPPLIED WITH SATELLITE DISH.
- ⑦ SEE WIRING INSTL-TV/VCR SIDE FOR ADDITIONAL INFORMATION.
- ⑥ TAPE ANTENNA-EXTENSIONS TOGETHER WITH TAPE 8363-01-000.
- ⑤ SEE WIRING INSTL-TV/VCR,FRONT FOR ADDITIONAL INFORMATION.
- ④ WIRE ROUTED IN ROOF.
- ③ COAX IS AN INTEGRAL PART OF WIRE ASM-LEFT.
- ② ROUTE COAX UNDER FLOOR.
- ① NOT USED WITH (68F) (73H)

- (76C) ENTERTAINMENT CTR/EXT CASSETTE
- (73H) TV-19"/VCR/VIDEO SEL/SSL BNK
- (68F) TV-19"/VIDEO SELECT/SSL BUNK
- (480) SATELLITE DISH
- (450) BED-TWINS
- (265) CODES/STANDARDS-CSA/CMVSS
- (193) TV ANTENNA
- (1B1) CODES/STANDARDS USA

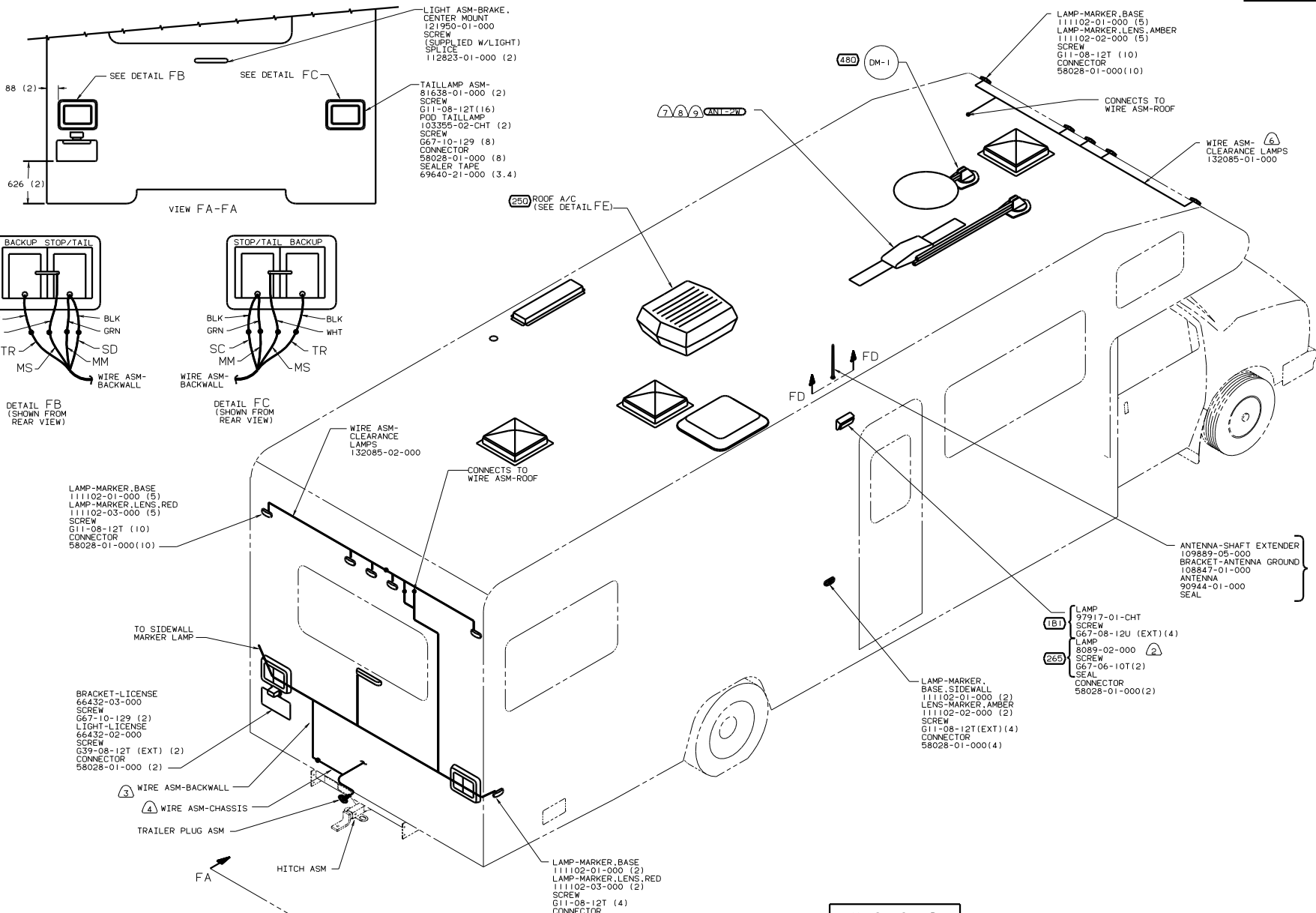
FOR ELECTRICAL TORQUE SPECIFICATIONS SEE DWG NO. 128783-01-000

FILE: WIRING INSTL-BODY(COAX BDRM)

30 X 100 SCALE DRAWING SHEET 5 OF 6

1B1 (265) (450) 00 429U

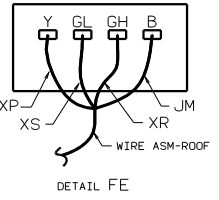
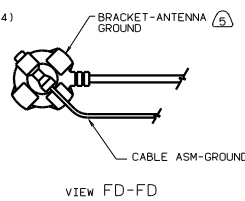
129312 133658



- ③ LOCATED IN FRONT ROOF ASM.
- ⑤ WRAP BRACKET LEGS AROUND ANTENNA BASE.
- ④ SECURE WIRE BELOW COACH WITH CLAMP 10499-01-000 AND SCREW G67-10-12B.
- ③ LOCATED IN BACKWALL ASM.
- ② INSTALL WITH WIRES TOWARDS ROOF.

- ⑨ SEE DRAWING 76319-01-000 FOR INSTALLATION OF TV ANTENNA.
- ⑧ LOCATE CLAMP TO RETAIN CABLE BUT NOT TO RESTRICT ANTENNA TRAVEL.
- ⑦ ADD RUBBER BUMPER TO ROOF UNDER EACH END OF ANTENNA IN DOWN POSITION WHICH MAY COME INTO CONTACT WITH ROOF.

1. CONNECTOR-PLUG, TRAILER 113589-01-000 TO BE SUPPLIED LOOSE IN COACH WITH TRAILER TOW PACKAGE.



FOR ELECTRICAL TORQUE SPECIFICATIONS SEE DWG NO. 128753-01-000

- ⑦⑥ ENTERTAINMENT CTR/EXT CSETTE
- ④⑧① SATELLITE DISH
- ②⑤① A/C ROOF AIR (1) 14,800 BTU
- ②⑥⑤ CODES/STANDARDS-CSA/CMVSS
- ①⑧① CODES STANDARDS/USA

00 429U ①⑧① ②⑥⑤
 TITLE: WIRING INSTL-BODY(EXT LMP)
 SHEET 6 OF 6