



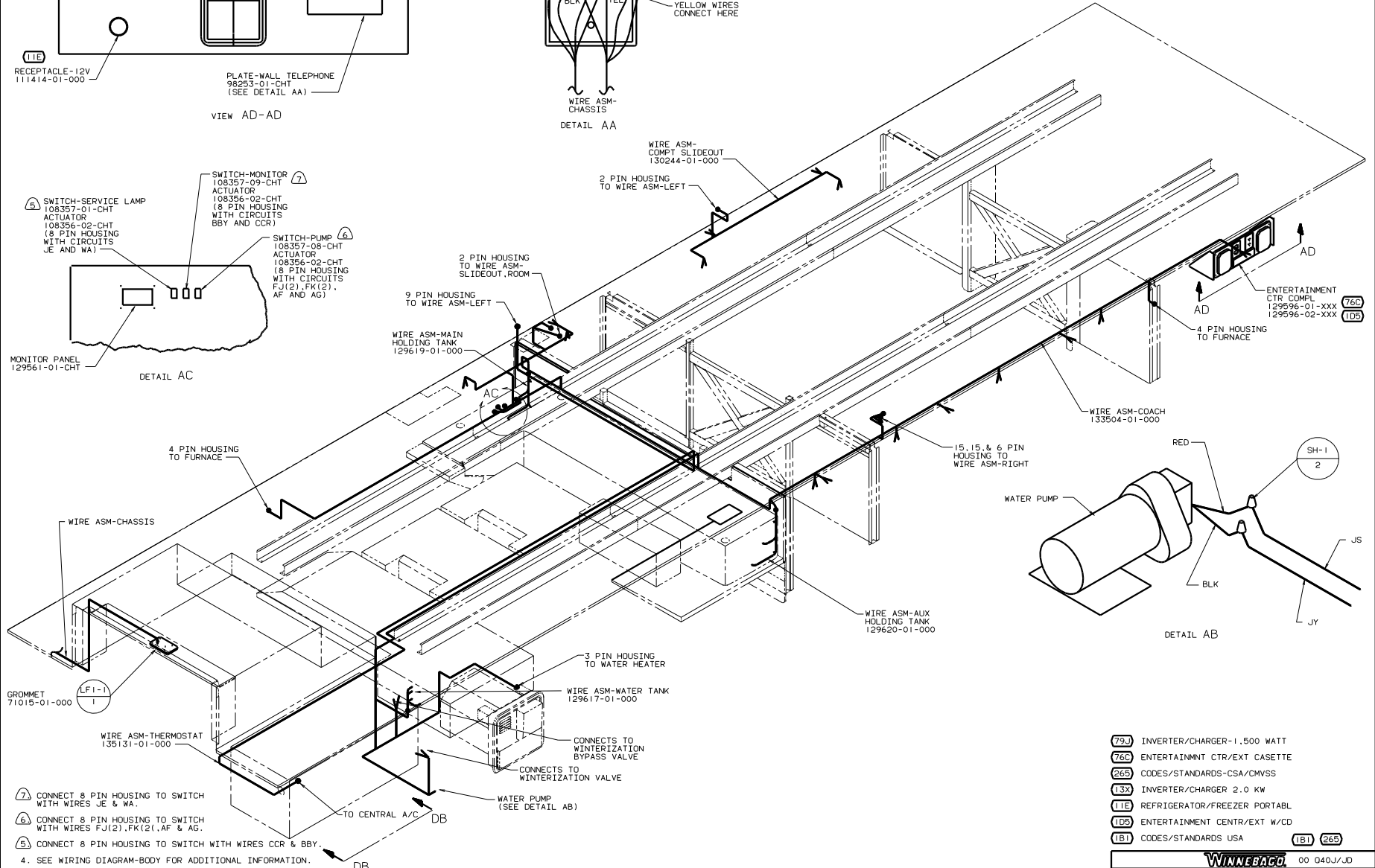
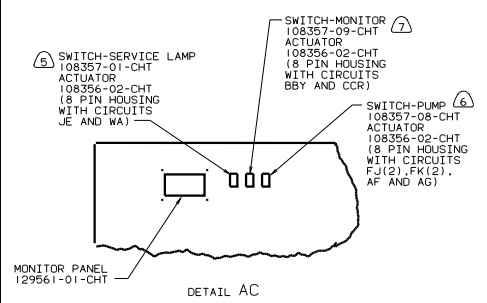
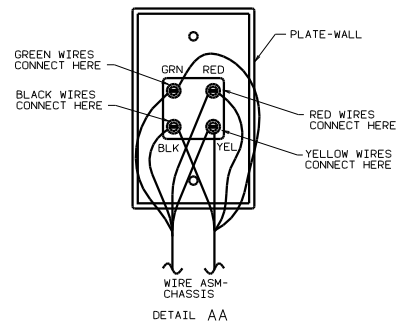
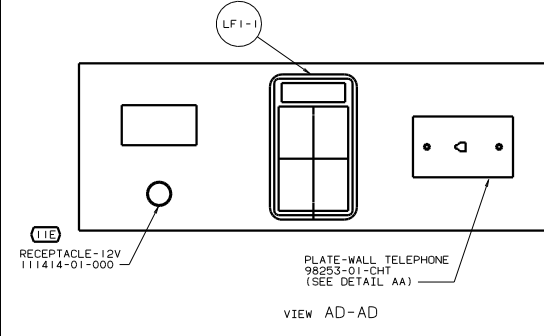
DANGER

Danger of electrical shock, burns or death. Always remove all power sources before attempting any repair, service or diagnostic work. Power can be present from shore power, generator, inverter or battery. All power sources must be disabled and secured before performing any service.



CAUTION

If you lack the skills, tools or equipment to perform diagnostic or repair work leave such work to an authorized Winnebago Industries dealer or other qualified shop.



- 1. ALL WIRE TO BE CLAMPED WITH CLAMP 10495-01-000 OR CLIP 80734-02-000 EVERY 600. USE SCREW G67-10-12B UNLESS OTHERWISE SPECIFIED.
- 2. ALL WIRES ARE TO BE CLAMPED WITH CLAMP 10497-05-000 WITHIN 200 OF OUTLET BOXES AND SPLICES. USE SCREW G67-10-12B OR G39-10-12B.
- 3. ALL GROUND WIRES ARE TO BE COVERED WITH TUBING 8041-02-000.
- 4. SEE WIRING DIAGRAM-BODY FOR ADDITIONAL INFORMATION.
- 5. CONNECT 8 PIN HOUSING TO SWITCH WITH WIRES CCR & BBY.
- 6. CONNECT 8 PIN HOUSING TO SWITCH WITH WIRES FJ(2), FK(2), AF & AG.
- 7. CONNECT 8 PIN HOUSING TO SWITCH WITH WIRES JE & WA.

FOR ELECTRICAL TORQUE SPECIFICATIONS SEE DWG NO. 128783-01-000

FOR ELECTRICAL CALLOUTS SEE DWG NO. 121339-01-000

- 79J INVERTER/CHARGER-1,500 WATT
- 76C ENTERTAINMENT CTR/EXT CASSETTE
- 26S CODES/STANDARDS-CSA/CMVSS
- 13X INVERTER/CHARGER 2.0 KW
- 11E REFRIGERATOR/FREEZER PORTABLE
- 10S ENTERTAINMENT CENTR/EXT W/CD
- 1B1 CODES/STANDARDS USA

OF IN	DATE	UNSPECIFIED TOLERANCES ARE:	MATERIAL
CHP	DATE	WHOLE DIM (X)	
PL	DATE	ONE-PLACE (X, .01)	
P/E	DATE	TWO-PLACE (X, .001)	
DATE	DATE	ANGLE	
DATE	DATE	ROUND W/ANGLE	
DATE	DATE	PROJECTION	

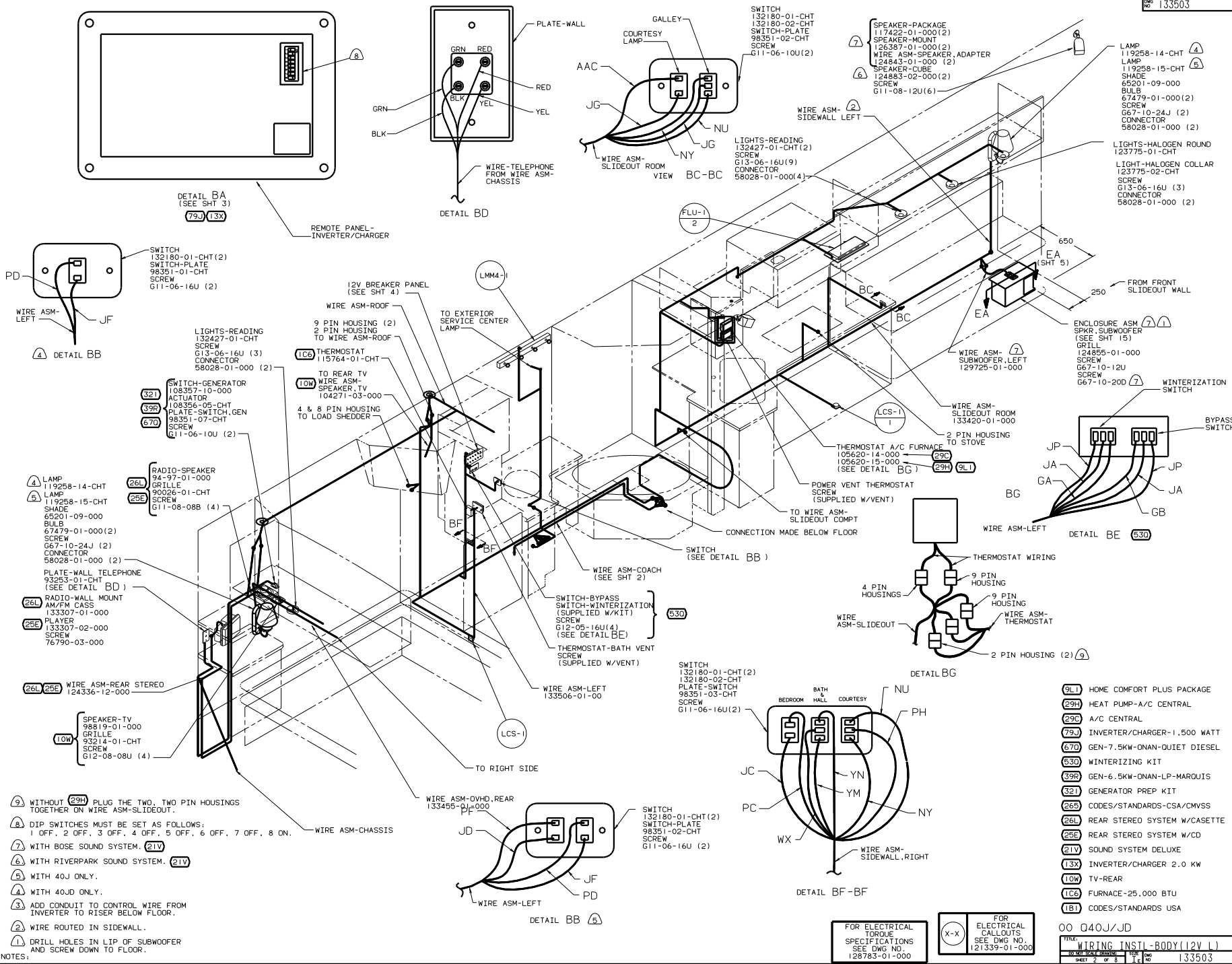
WINNEBAGO 00 G40J/JD

WIRING INSTL-BODY (110 BF)

SHEET 1 OF 8

133503

REF: 129903 AB 1



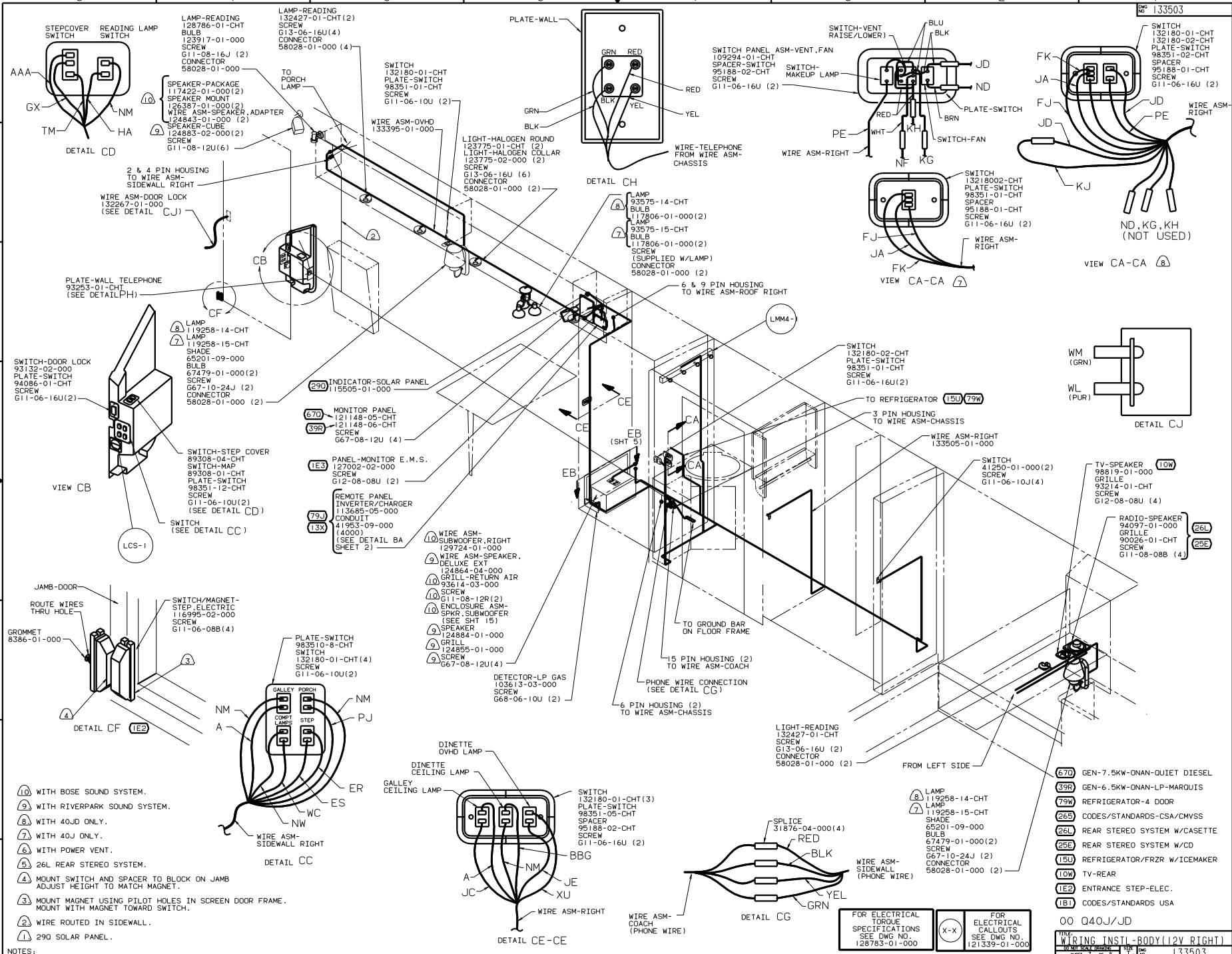
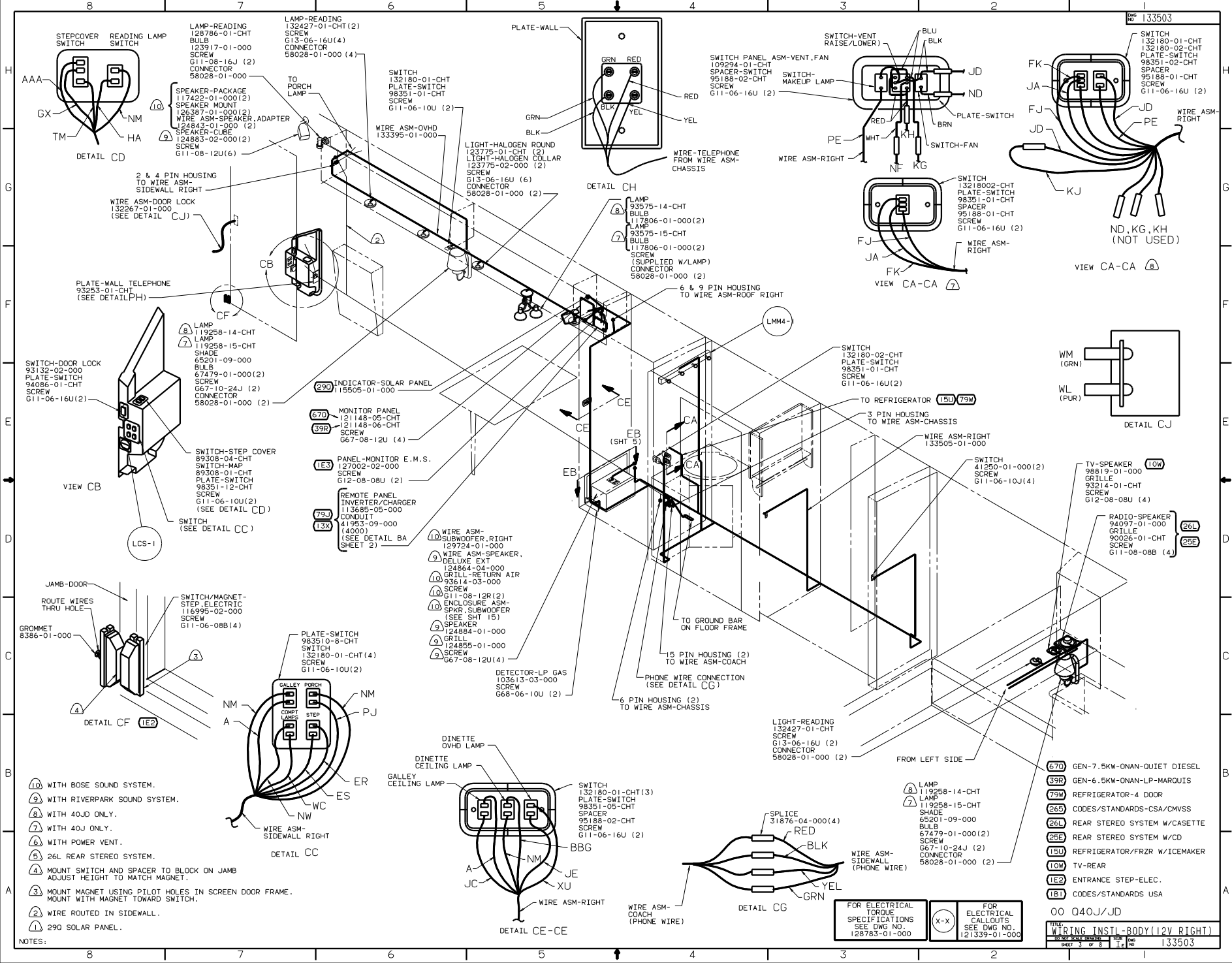
- NOTES:
- ① DRILL HOLES IN LIP OF SUBWOOFER AND SCREW DOWN TO FLOOR.
 - ② WIRE ROUTED IN SIDEWALL.
 - ③ ADD CONDUIT TO CONTROL WIRE FROM INVERTER TO RISER BELOW FLOOR.
 - ④ WITH 40J ONLY.
 - ⑤ WITH 40J ONLY.
 - ⑥ WITH RIVERPARK SOUND SYSTEM. (21V)
 - ⑦ WITH BOSE SOUND SYSTEM. (21V)
 - ⑧ DIP SWITCHES MUST BE SET AS FOLLOWS:
1 OFF, 2 OFF, 3 OFF, 4 OFF, 5 OFF, 6 OFF, 7 OFF, 8 ON.
 - ⑨ WITHOUT (29H) PLUG THE TWO, TWO PIN HOUSINGS TOGETHER ON WIRE ASM-SLIDEOUT.

- (91L) HOME COMFORT PLUS PACKAGE
- (29H) HEAT PUMP-A/C CENTRAL
- (29C) A/C CENTRAL
- (79J) INVERTER/CHARGER-1.500 WATT
- (670) GEN-7, 5KW-ONAN-QUIET DIESEL
- (530) WINTERIZING KIT
- (39R) GEN-6, 5KW-ONAN-LP-MARQUIS
- (321) GENERATOR PREP KIT
- (26S) CODES/STANDARDS-CSA/CMVSS
- (26L) REAR STEREO SYSTEM W/CASSETTE
- (28E) REAR STEREO SYSTEM W/CD
- (21V) SOUND SYSTEM DELUXE
- (13X) INVERTER/CHARGER 2.0 KW
- (10W) TV-REAR
- (1C6) FURNACE-25,000 BTU
- (1B1) CODES/STANDARDS USA

FOR ELECTRICAL TORQUE SPECIFICATIONS SEE DWG NO. 128783-01-000

FOR ELECTRICAL CALLOUTS SEE DWG NO. 121339-01-000

00 Q40J/JD	
FILE:	WIRING INSTL-BODY(12V L)
NO. OF SHEETS:	2 OF 8
REV:	1
DATE:	133503

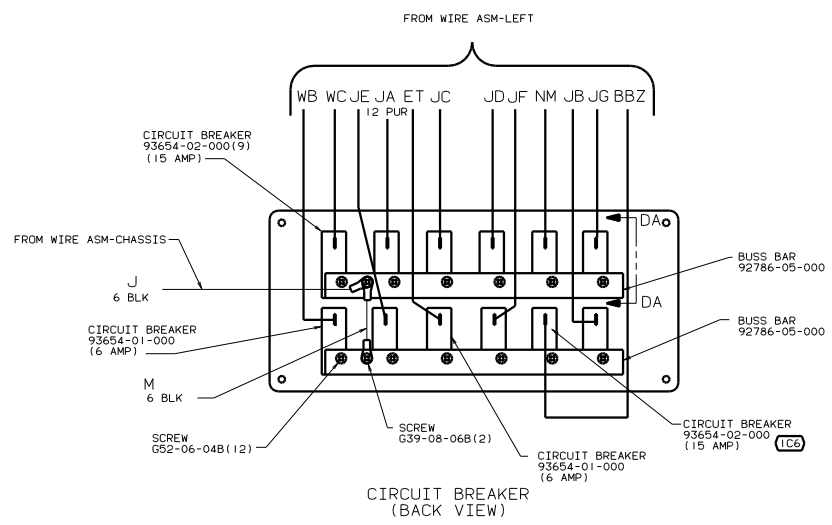
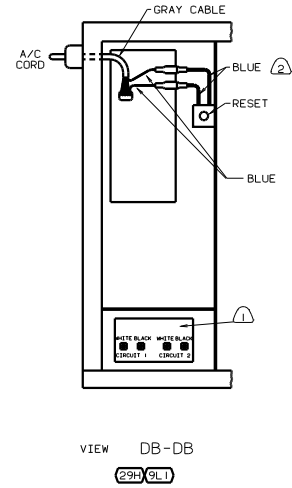
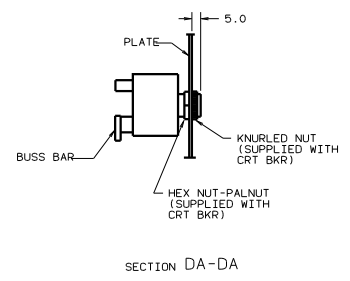
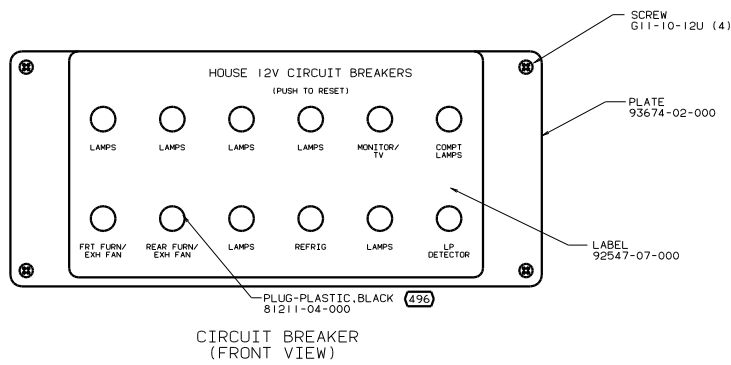


NOTES:

- ① WITH BOSE SOUND SYSTEM.
- ② WITH RIVERPARK SOUND SYSTEM.
- ③ WITH 40J ONLY.
- ④ WITH 40J ONLY.
- ⑤ WITH POWER VENT.
- ⑥ 26L REAR STEREO SYSTEM.
- ⑦ MOUNT SWITCH AND SPACER TO BLOCK ON JAMB ADJUST HEIGHT TO MATCH MAGNET.
- ⑧ MOUNT MAGNET USING PILOT HOLES IN SCREEN DOOR FRAME. MOUNT WITH MAGNET TOWARD SWITCH.
- ⑨ WIRE ROUTED IN SIDEWALL.
- ⑩ 290 SOLAR PANEL.

FOR ELECTRICAL TORQUE SPECIFICATIONS SEE DWG NO. 128783-01-000	X-X	FOR ELECTRICAL CALLOUTS SEE DWG NO. 121339-01-000
--	-----	---

00 Q40J/JD
FILE: 133503
NO. 100 SCALE: 1:1
SHEET 3 OF 8
133503



CONNECT BLU WIRES FROM RESET TO THE BLUE WIRES WITH SPADE TERMINALS ON A/C CORD WITH (29H) & (9L1) FEATURE

SEE WIRING INSTL-BODY.110V FOR ADDITIONAL INFORMATION.

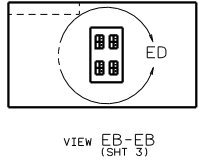
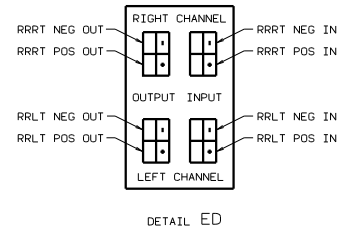
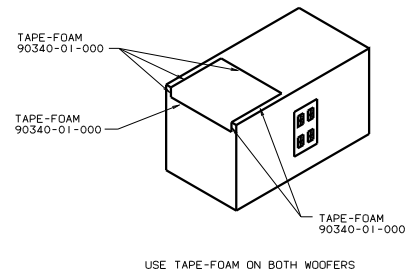
FOR ELECTRICAL TORQUE SPECIFICATIONS SEE DWG NO. 128783-01-000

- (9L1) HOME COMFORT PLUS PACKAGE
- (29H) HEAT PUMP-A/C CENTRAL
- (496) FURNACE WITHOUT
- (265) CODES/STANDARDS-CSA/CMVSS
- (1CG) FURNACE-25,000 BTU
- (1B1) CODES/STANDARDS USA

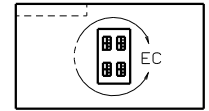
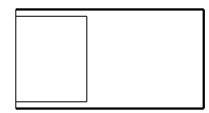
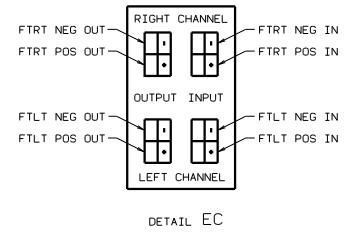
00 040J/JD

WIRING INSTL-BODY(12 BP)

133503



REAR BOSE WOOFER



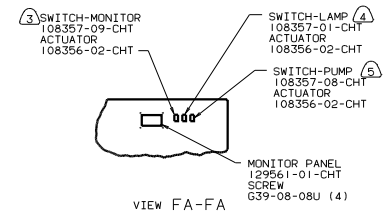
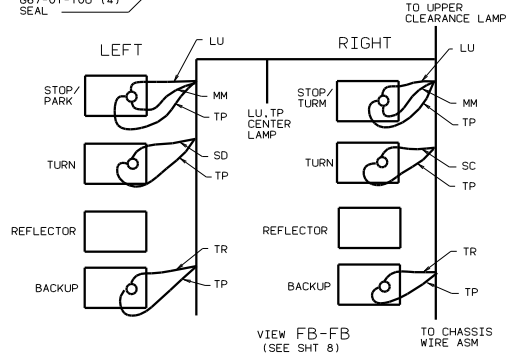
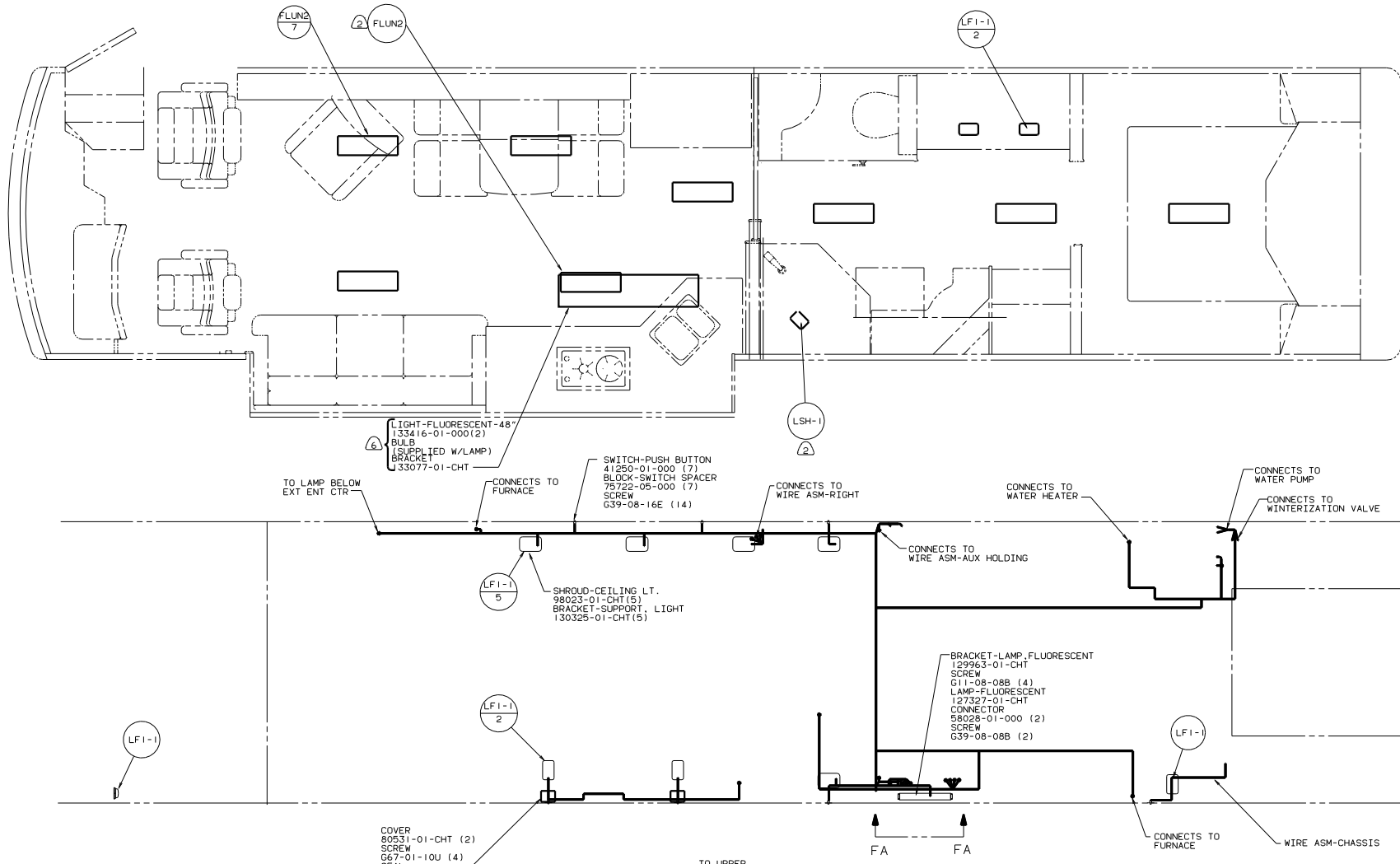
FRONT BOSE WOOFER

NOTES:

FOR ELECTRICAL
TORQUE
SPECIFICATIONS
SEE DWG NO
128783-01-000

(265) CODES/STANDARDS-CSA/CMVSS
(181) CODES/STANDARDS USA
00 Q40JD

TITLE: WIRING INSTL - BODY (DLX SND)
DWG NO: 128783-01-000
SHEET 5 OF 8
JOB NO: 133503



VIEW FA-FA

- ① WITH 40JD ONLY.
- ② CONNECT 8 PIN HOUSING TO SWITCH WITH WIRES FJ (2), FK (2), AF AND AG.
- ③ CONNECT 8 PIN HOUSING TO SWITCH WITH WIRES JE AND WA.
- ④ CONNECT 8 PIN HOUSING TO SWITCH WITH WIRES CCR AND BBV.
- ⑤ WITH 40J ONLY.
- ⑥ WIRE ROUTED INSIDE OF COMPARTMENT.

NOTES:

FOR ELECTRICAL TORQUE SPECIFICATIONS SEE DWG NO. 128783-01-000

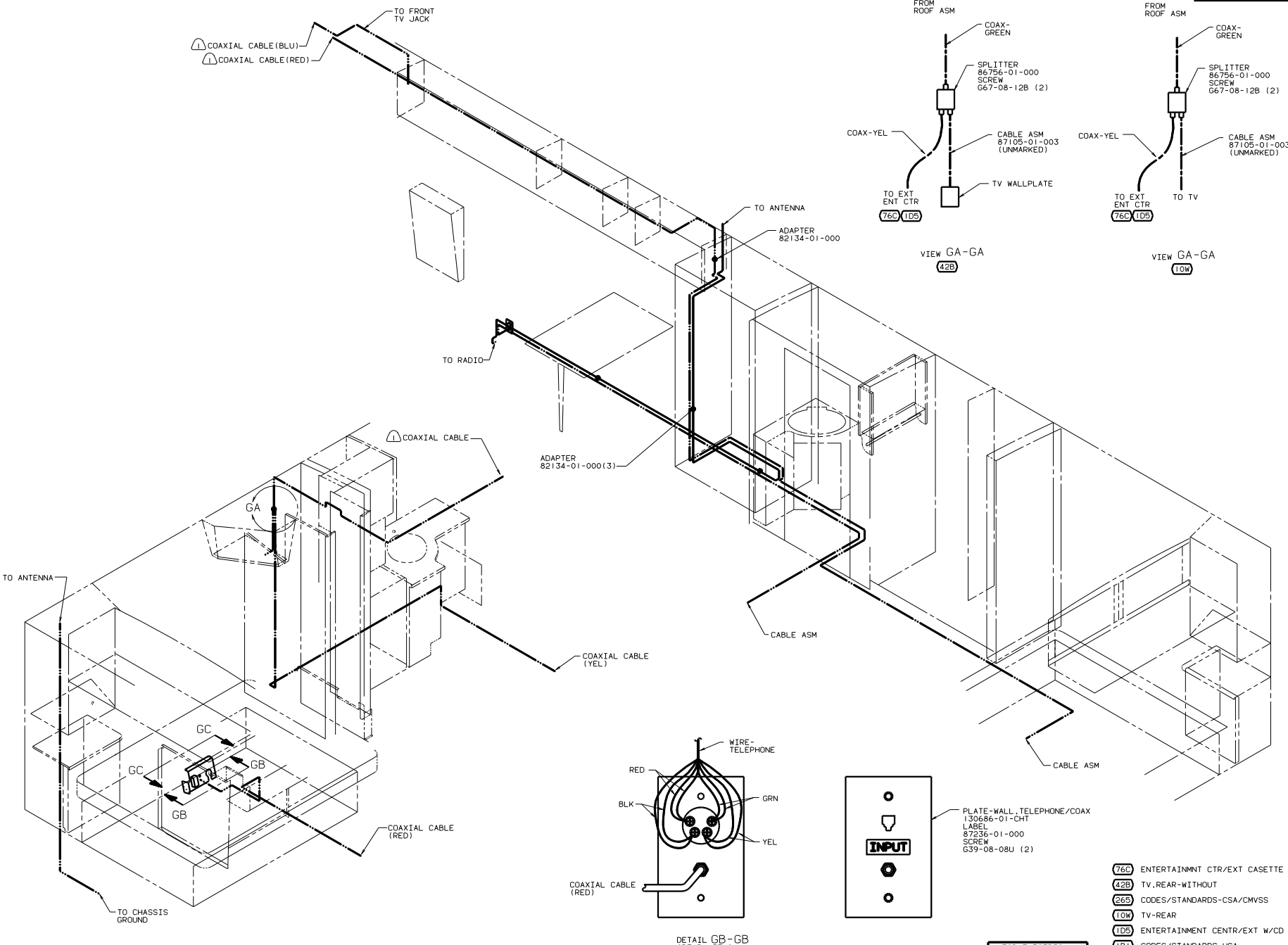
FOR ELECTRICAL CALLOUTS SEE DWG NO. 121339-01-000

(265) CODES/STANDARDS-CSA/CMVSS

(181) CODES/STANDARDS IUSA

00 040J/JD COMPARTMENT LAMPS

TITLE: WIRING INSTL-BODY(12 CL)
 SHEET 6 OF 8



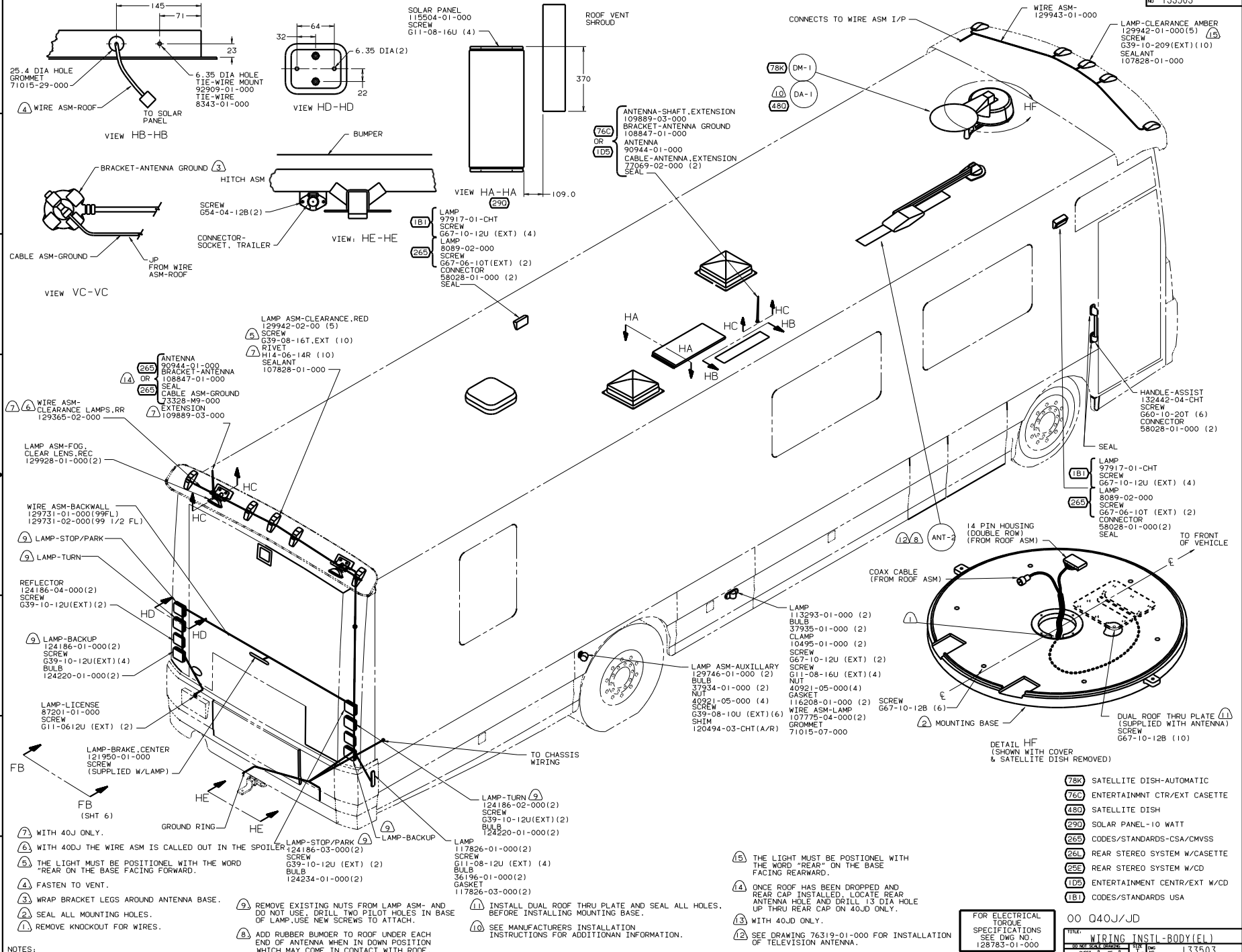
2. COAX CABLES ARE ASSEMBLED IN THE WIRE ASSEMBLIES.

COAX ROUTED IN ROOF.

- (76C) ENTERTAINMENT CTR/EXT CASSETTE
- (42B) TV, REAR-WITHOUT
- (26S) CODES/STANDARDS-CSA/CMVSS
- (10W) TV-REAR
- (1D5) ENTERTAINMENT CENTR/EXT W/ CD
- (1B1) CODES/STANDARDS USA
- 00 Q40J/JD

FOR ELECTRICAL TORQUE SPECIFICATIONS SEE DWG NO 128783-01-000

TITLE: WIRING INSTL-BODY(COAX)	
NO. OF SHEETS: 8	SHEET NO: 7
DATE: 11/81	DWG NO: 133503



NOTES:

- ① WITH 40J ONLY.
- ② WITH 40DJ THE WIRE ASM IS CALLED OUT IN THE SPOILER
- ③ THE LIGHT MUST BE POSITIONEL WITH THE WORD "REAR ON THE BASE FACING FORWARD.
- ④ FASTEN TO VENT.
- ⑤ WRAP BRACKET LEGS AROUND ANTENNA BASE.
- ⑥ SEAL ALL MOUNTING HOLES.
- ⑦ REMOVE KNOCKOUT FOR WIRES.

- ⑧ REMOVE EXISTING NUTS FROM LAMP ASM- AND DO NOT USE. DRILL TWO PILOT HOLES IN BASE OF LAMP. USE NEW SCREWS TO ATTACH.
- ⑨ ADD RUBBER BUMPER TO ROOF UNDER EACH END OF ANTENNA WHEN IN DOWN POSITION WHICH MAY COME IN CONTACT WITH ROOF.

- ⑩ INSTALL DUAL ROOF THRU PLATE AND SEAL ALL HOLES. BEFORE INSTALLING MOUNTING BASE.
- ⑪ SEE MANUFACTURERS INSTALLATION INSTRUCTIONS FOR ADDITIONAN INFORMATION.

- ⑫ THE LIGHT MUST BE POSITIONEL WITH THE WORD "REAR" ON THE BASE FACING REARWARD.
- ⑬ ONCE ROOF HAS BEEN DROPPED AND REAR CAP INSTALLED, LOCATE REAR ANTENNA HOLE AND DRILL 13 DIA HOLE UP THRU REAR CAP ON 40DJ ONLY.
- ⑭ WITH 40DJ ONLY.
- ⑮ SEE DRAWING 76319-01-000 FOR INSTALLATION OF TELEVISION ANTENNA.

FOR ELECTRICAL TORQUE SPECIFICATIONS SEE DWG NO 128783-01-000

- ⑯ SATTELLITE DISH-AUTOMATIC
- ⑰ ENTERTAINMNT CTR/EXT CASETTE
- ⑱ SATTELLITE DISH
- ⑲ SOLAR PANEL-10 WATT
- ⑳ CODES/STANDARDS-CSA/CMVSS
- ㉑ REAR STEREO SYSTEM W/CASETTE
- ㉒ REAR STEREO SYSTEM W/CD
- ㉓ ENTERTAINMENT CTR/EXT W/CD
- ㉔ CODES/STANDARDS USA

00 Q40J/JD
 TITLE: WIRING INSTL-BODY(FL)
 SHEET 8 OF 8