



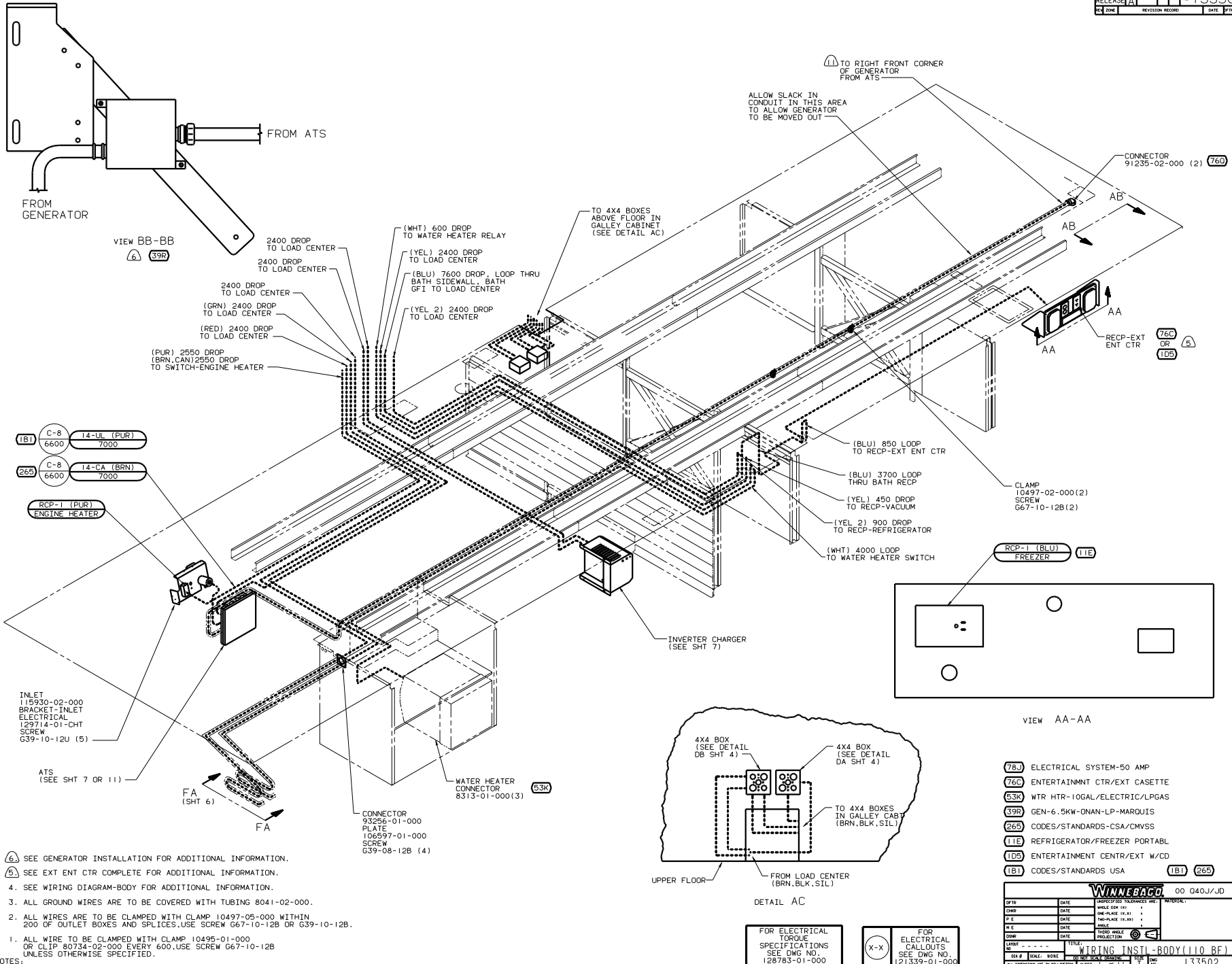
DANGER

Danger of electrical shock, burns or death. Always remove all power sources before attempting any repair, service or diagnostic work. Power can be present from shore power, generator, inverter or battery. All power sources must be disabled and secured before performing any service.



CAUTION

If you lack the skills, tools or equipment to perform diagnostic or repair work leave such work to an authorized Winnebago Industries dealer or other qualified shop.



- 6. SEE GENERATOR INSTALLATION FOR ADDITIONAL INFORMATION.
- 5. SEE EXT ENT CTR COMPLETE FOR ADDITIONAL INFORMATION.
- 4. SEE WIRING DIAGRAM-BODY FOR ADDITIONAL INFORMATION.
- 3. ALL GROUND WIRES ARE TO BE COVERED WITH TUBING 8041-02-000.
- 2. ALL WIRES ARE TO BE CLAMPED WITH CLAMP 10495-01-000 OR CLIP 80734-02-000 EVERY 600, USE SCREW G67-10-12B UNLESS OTHERWISE SPECIFIED.
- 1. ALL WIRE TO BE CLAMPED WITH CLAMP 10495-01-000 OR CLIP 80734-02-000 EVERY 600, USE SCREW G67-10-12B UNLESS OTHERWISE SPECIFIED.

- 78J ELECTRICAL SYSTEM-50 AMP
- 76C ENTERTAINMNT CTR/EXT CASSETTE
- 53K WTR HTR-10GAL/ELECTRIC/LPGAS
- 39R GEN-6.5KW-QNAN-LP-MARQUIS
- 265 CODES/STANDARDS-CSA/CMVSS
- 11E REFRIGERATOR/FREEZER PORTABL
- 1D5 ENTERTAINMENT CTR/EXT W/CD
- 1B1 CODES/STANDARDS USA
- 1B1 265

FOR ELECTRICAL TORQUE SPECIFICATIONS SEE DWG NO. 128763-01-000

X-X

FOR ELECTRICAL CALLOUTS SEE DWG NO. 121339-01-000

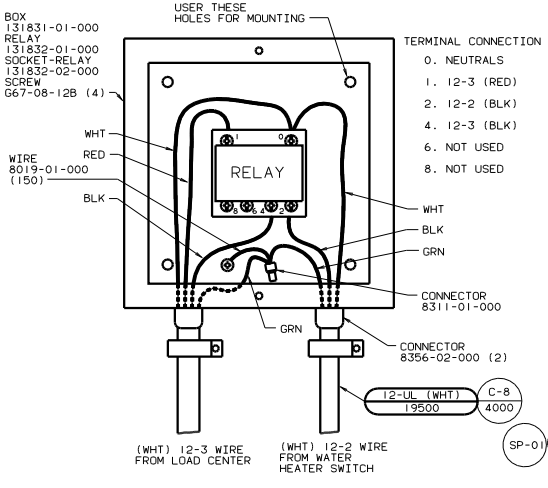
QTY	DATE	UNSPECIFIED TOLERANCES ARE:	MATERIAL
CHP	DATE	WHOLE OR 1/16"	
RF	DATE	ONE-PLACE (16:81)	
PL	DATE	TWO-PLACE (16:81)	
FILE	DATE	ANGLE	
CODE	DATE	INDIC. W/ANGLE INDICATOR	

WINNEBAGO 00 Q40J/JD

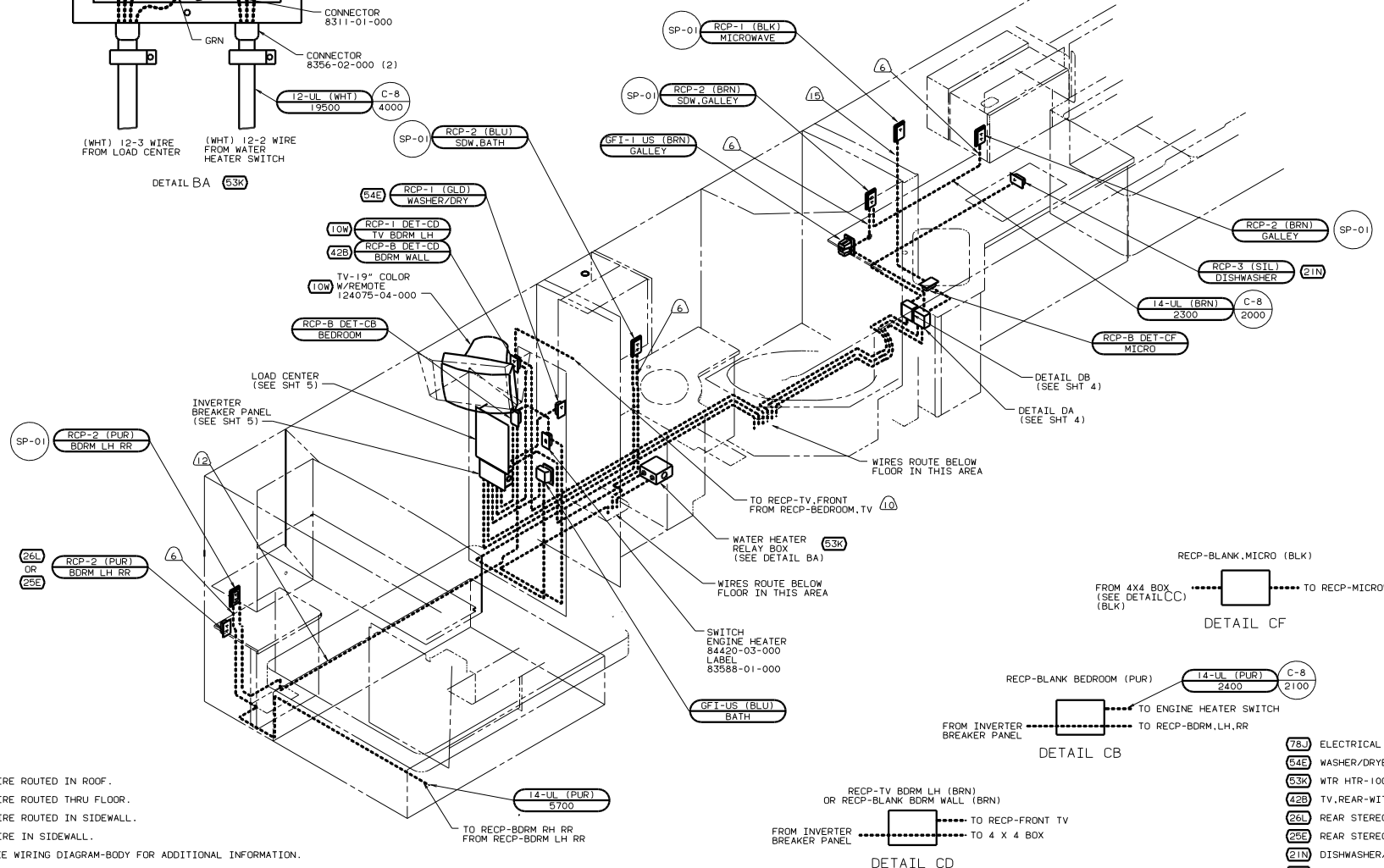
TITLE: WIRING INSTL-BODY (110 BF)

SHEET 1 OF 11

REF: 129903 AB 1



DETAIL BA (53K)



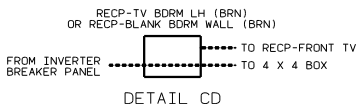
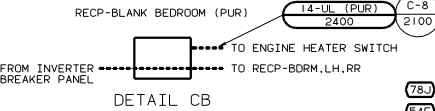
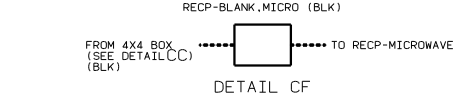
LOAD CENTER (SEE SHT 5)

INVERTER BREAKER PANEL (SEE SHT 5)

WIRES ROUTE BELOW FLOOR IN THIS AREA

WATER HEATER RELAY BOX (SEE DETAIL BA) (53K)

SWITCH ENGINE HEATER 84420-03-000 LABEL 83588-01-000



- (8) WIRE ROUTED IN ROOF.
- (7) WIRE ROUTED THRU FLOOR.
- (6) WIRE ROUTED IN SIDEWALL.
- (5) WIRE IN SIDEWALL.

4. SEE WIRING DIAGRAM-BODY FOR ADDITIONAL INFORMATION.

3. ALL GROUND WIRES ARE TO BE COVERED WITH TUBING 8041-02-000.

2. ALL WIRES ARE TO BE CLAMPED WITH CLAMP 10497-05-000 WITHIN 200 OF OUTLET BOXES AND SPLICES, USE SCREW 667-10-12B OR 639-10-12B.

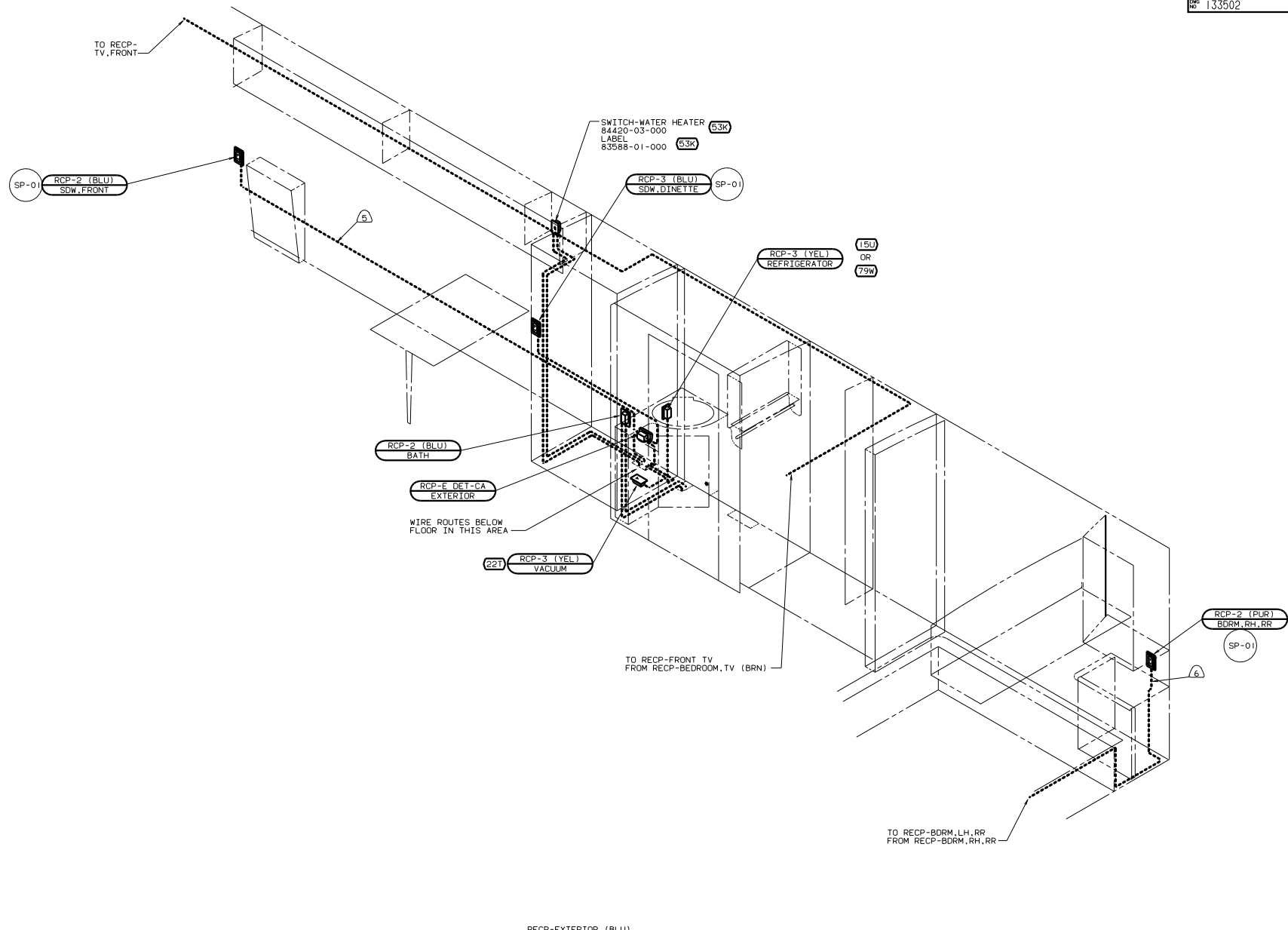
1. ALL WIRE TO BE CLAMPED WITH CLAMP 10495-01-000 OR CLIP 80734-02-000 EVERY 600, USE SCREW 667-10-12B UNLESS OTHERWISE SPECIFIED.

NOTES:

- (78J) ELECTRICAL SYSTEM-50 AMP
- (54E) WASHER/DRYER
- (53K) WTR HTR-LOGAL/ELECTRIC/LPGAS
- (42B) TV, REAR-WITHOUT
- (26L) REAR STEREO SYSTEM W/CASSETTE
- (25E) REAR STEREO SYSTEM W/CD
- (21N) DISHWASHER/BUILT-IN
- (10W) TV-REAR
- (1B1) CODES/STANDARDS USA

FOR ELECTRICAL TORQUE SPECIFICATIONS SEE DWG NO. 128783-01-000

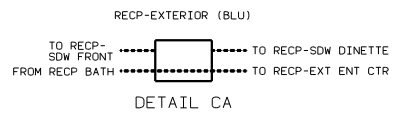
FOR ELECTRICAL CALLOUTS SEE DWG NO. 121339-01-000



- 6. WIRE ROUTED IN SIDEWALL.
- 5. WIRE IN SIDEWALL.

4. SEE WIRING DIAGRAM-BODY, 110V FOR ADDITIONAL INFORMATION.
3. ALL GROUND WIRES ARE TO BE COVERED WITH TUBING 8041-02-000.
2. ALL WIRES ARE TO BE CLAMPED WITH CLAMP 10497-05-000 WITHIN 200 OF OUTLET BOXES AND SPLICES, USE SCREW G67-10-12B OR G39-10-12B.
1. ALL WIRE TO BE CLAMPED WITH CLAMP 10495-01-000 OR CLIP 80734-02-000 EVERY 600, USE SCREW G67-10-12B UNLESS OTHERWISE SPECIFIED.

NOTES:

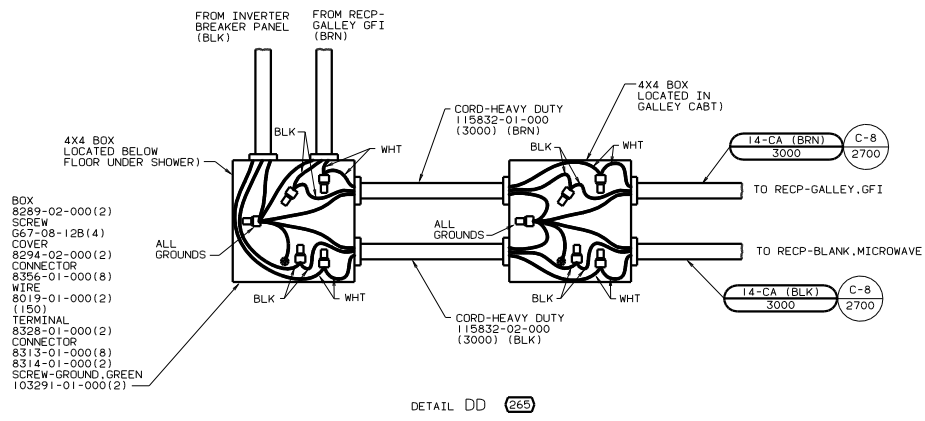
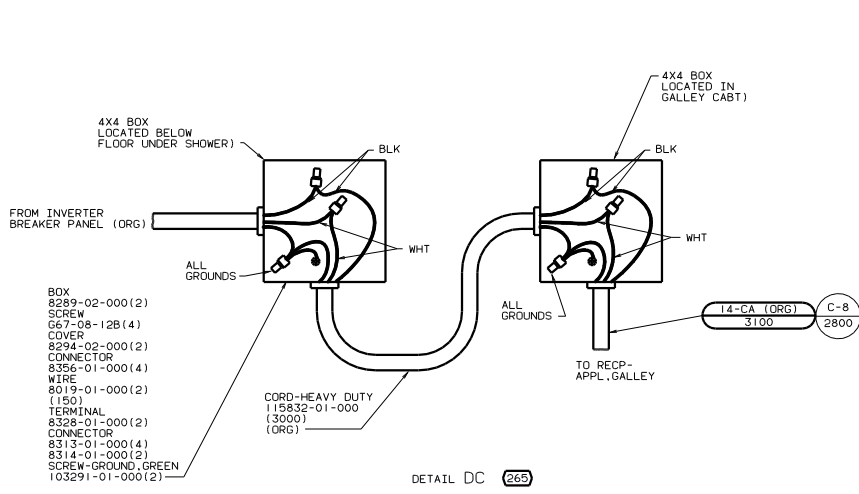
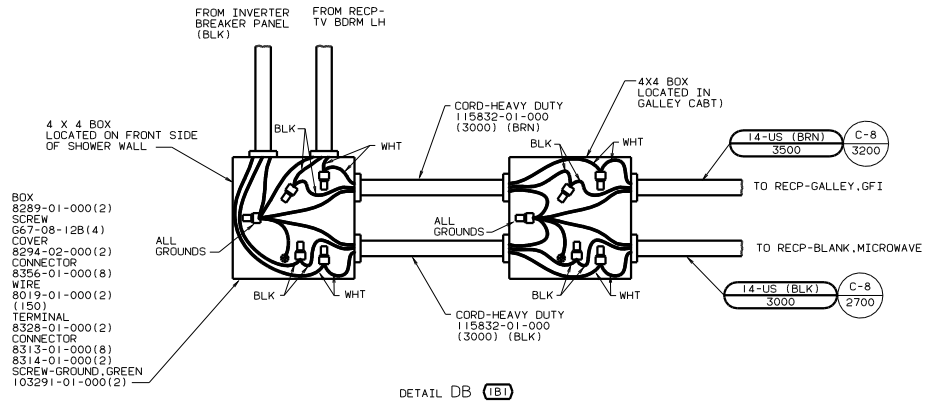
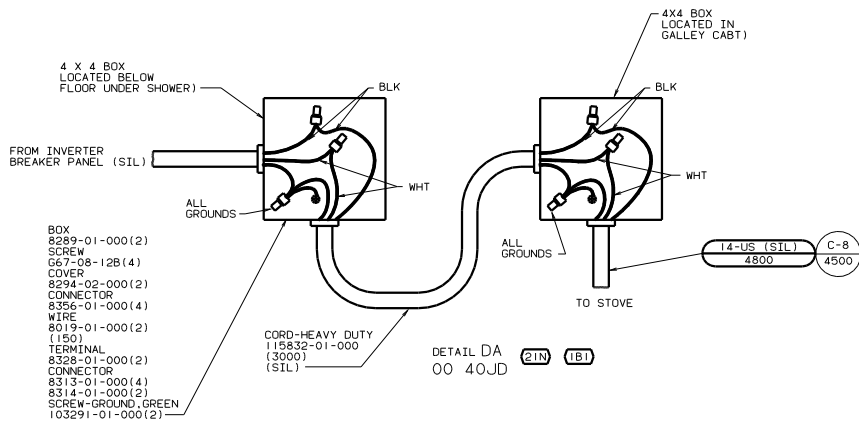


- 53K WTR HTR-10GAL/ELECTRIC/LPGAS
- 79W REFRIGERATOR-4 DOOR
- 78J ELECTRICAL SYSTEM-50 AMP
- 22T VACUUM SYSTEM-CENTRAL
- 15U REFRIGERATOR/FRZR W/ICEMAKER
- 1B1 CODES/STANDARDS USA

FOR ELECTRICAL TORQUE SPECIFICATIONS SEE DWG NO. 128783-01-000

FOR ELECTRICAL CALLOUTS SEE DWG NO. 121339-01-000

00 40J/JD 1B1 78J
 TITLE: WIRING INSTL-BODY (110R50US)
 SHEET 3 OF 11 1E NO 133502



78J ELECTRICAL SYSTEM-50 AMP

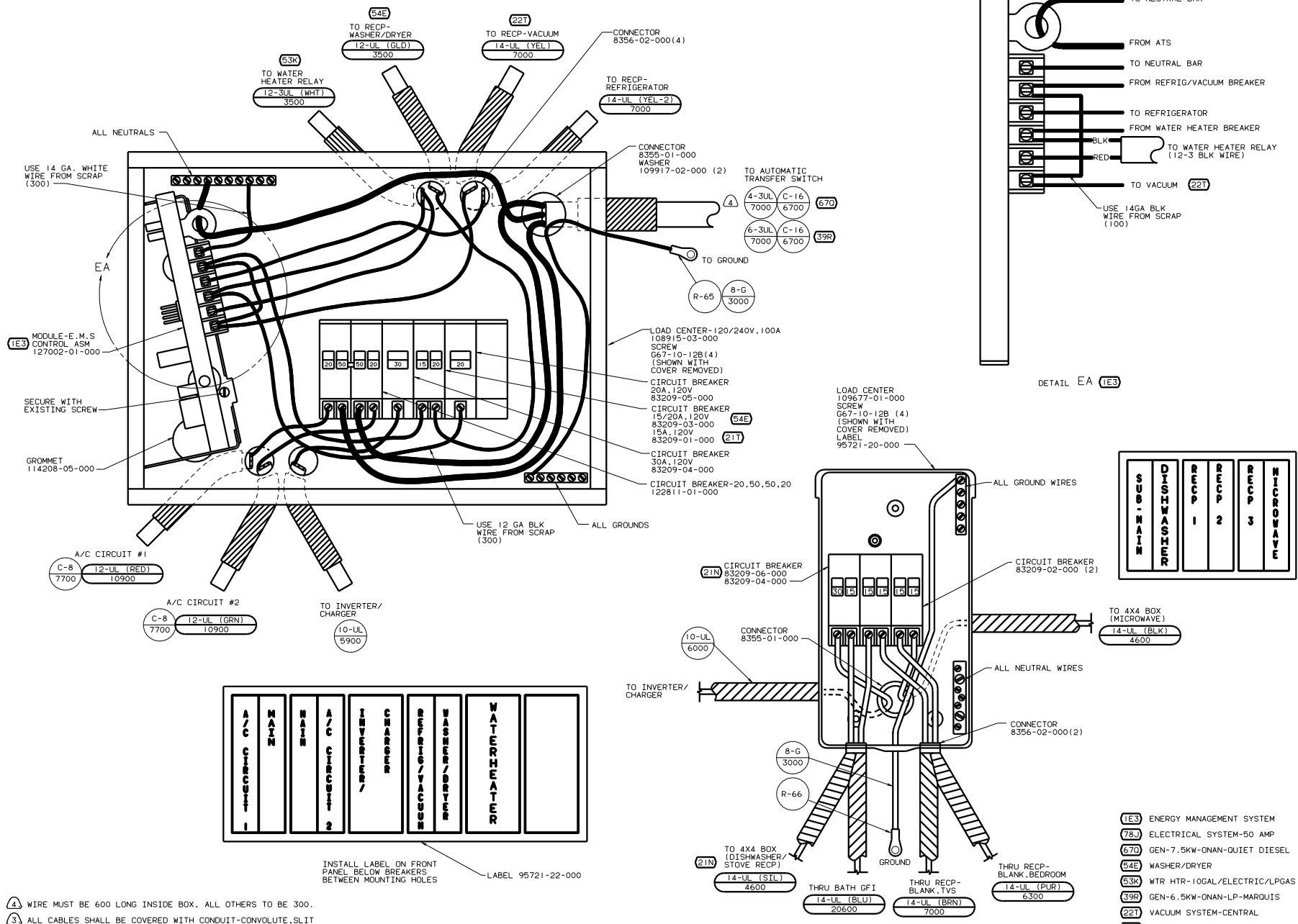
265 CODES/STANDARDS-CSA/CMVSS

21N DISHWASHER/BUILT-IN

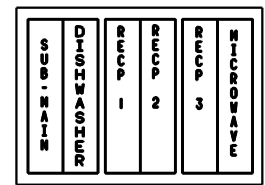
1B1 CODES/STANDARDS USA

00 040J/JD 78J

DATE	WIRING INSTL-BODY	REV	1.0
BY		CHK	
SHEET 4 OF 11		FIG NO	133502



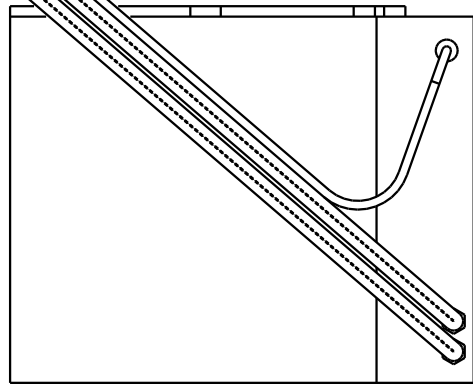
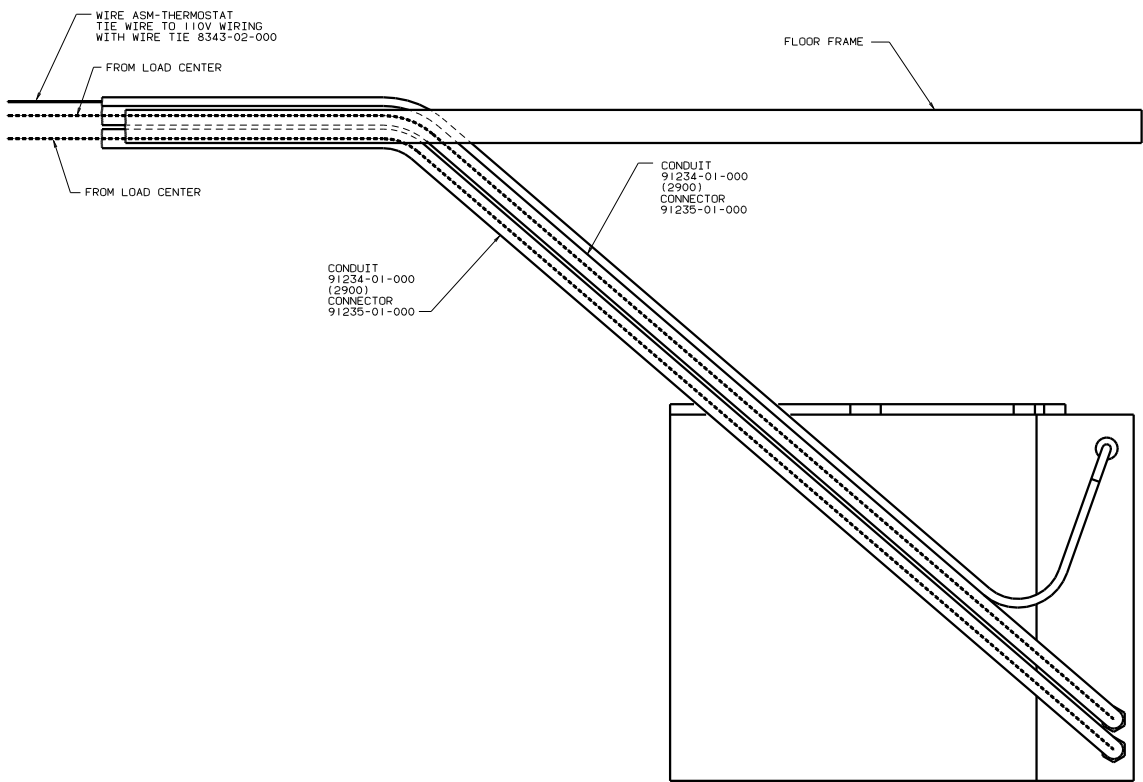
- ④ WIRE MUST BE 600 LONG INSIDE BOX. ALL OTHERS TO BE 300.
 - ③ ALL CABLES SHALL BE COVERED WITH CONDUIT-CONVOLUTE, SLIT 41953-01-000 UNLESS OTHERWISE SPECIFIED 600 LESS THAN CABLE LENGTH.
 - ② ATTACH WIRES TO BACKSIDE OF LOAD CENTER. USE EXISTING HOLES AND TIE-WIRE 116673-01-000.
1. ALL GROUND WIRES TO BE COVERED WITH TUBING 8041-02-000.



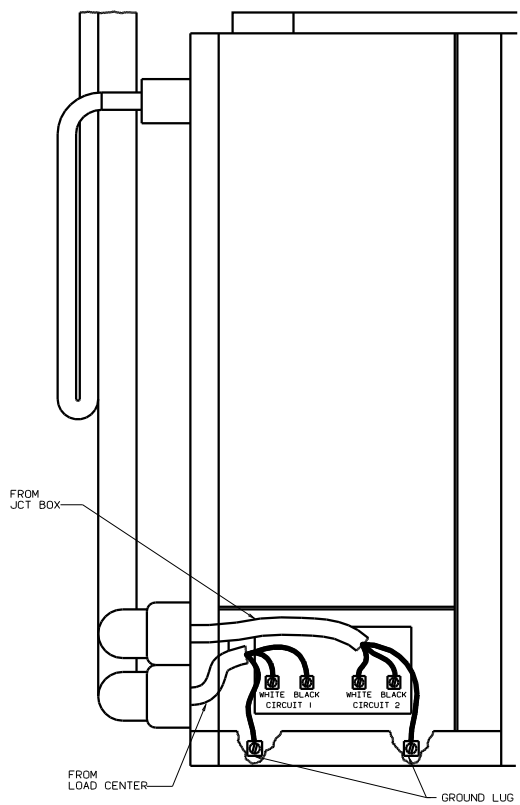
- 1E3 ENERGY MANAGEMENT SYSTEM
- 78J ELECTRICAL SYSTEM-50 AMP
- 670 GEN-7, 5KW-ONAN-QUIET DIESEL
- 54E WASHER/DRYER
- 53K WTR HTR-10GAL/ELECTRIC/LPGAS
- 39B GEN-6, 5KW-ONAN-LP-MARQUIS
- 22T VACUUM SYSTEM-CENTRAL
- 21N DISHWASHER/BUILT-IN
- 1B1 CODES/STANDARDS USA

FOR ELECTRICAL TORQUE SPECIFICATIONS SEE DWG NO. 128783-01-000

(X-X) FOR ELECTRICAL CALLOUTS SEE DWG NO. 121339-01-000



VIEW FA-FA



FOR ELECTRICAL TORQUE SPECIFICATIONS SEE DWG NO. 128783-01-000	(X-X)	FOR ELECTRICAL CALLOUTS SEE DWG NO. 121339-01-000
--	-------	---

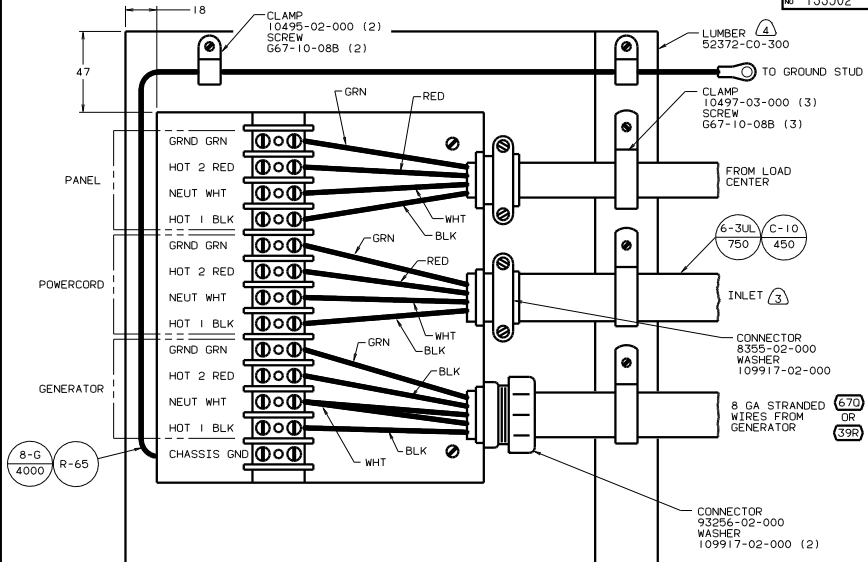
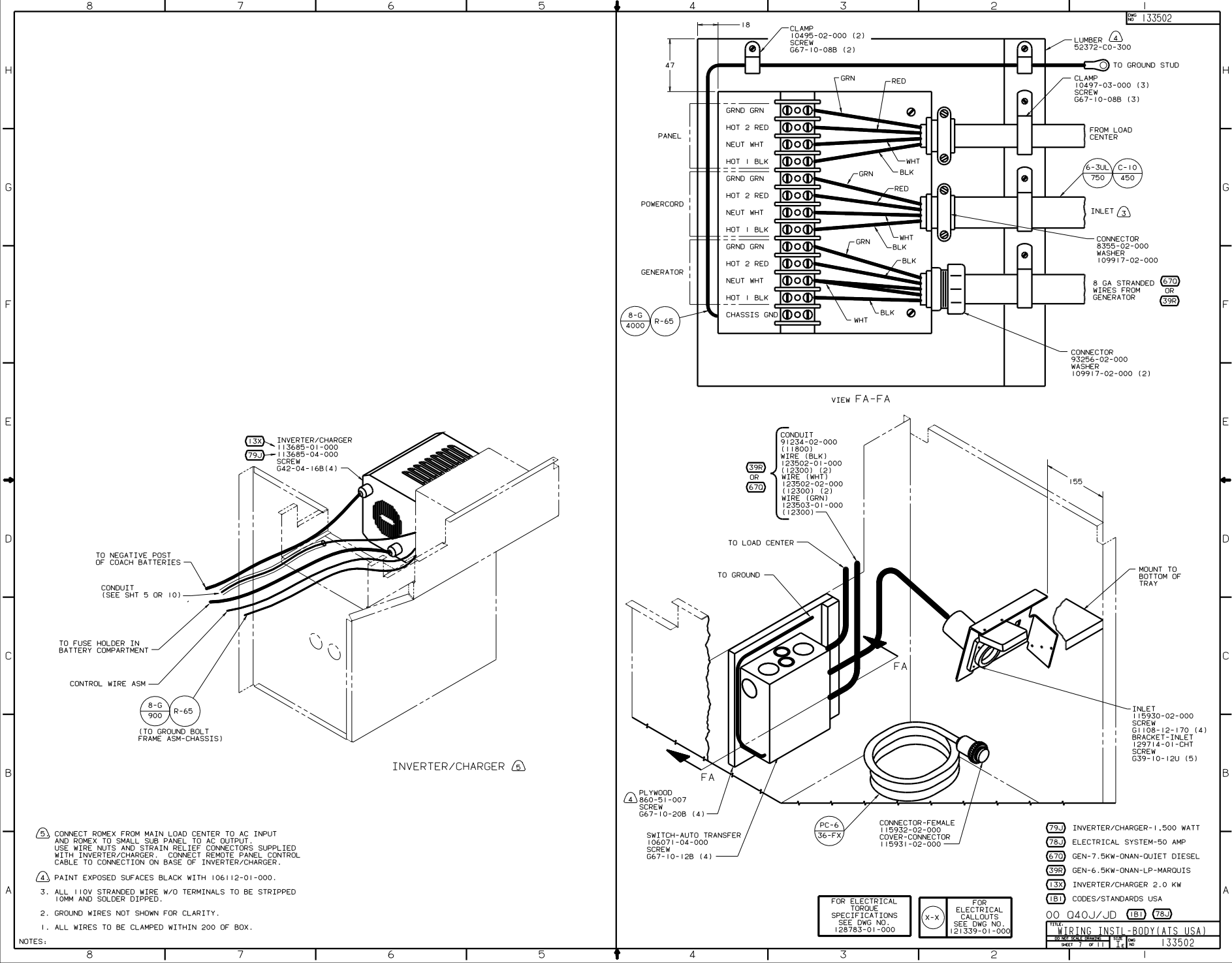
(265) CODES/STANDARDS-CSA/CMVSS

(1B1) CODES/STANDARDS USA

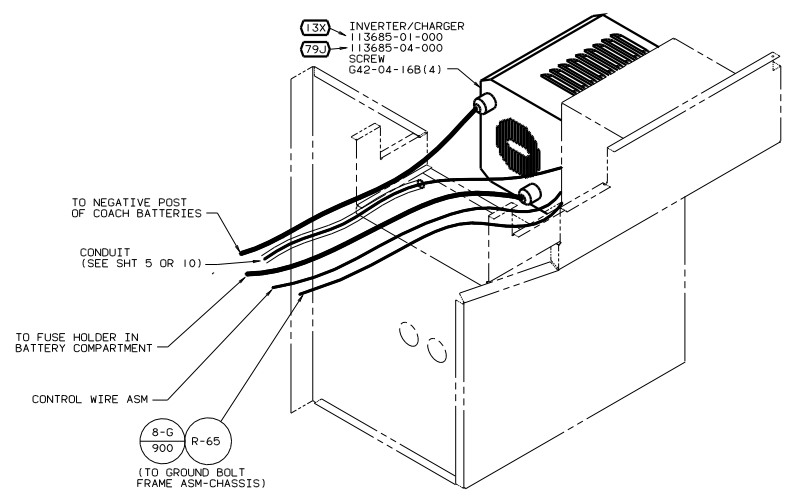
00 Q40J/JD (1B1) (265)

FILE: WIRING INSTL-BODY(CNTRL A/C)

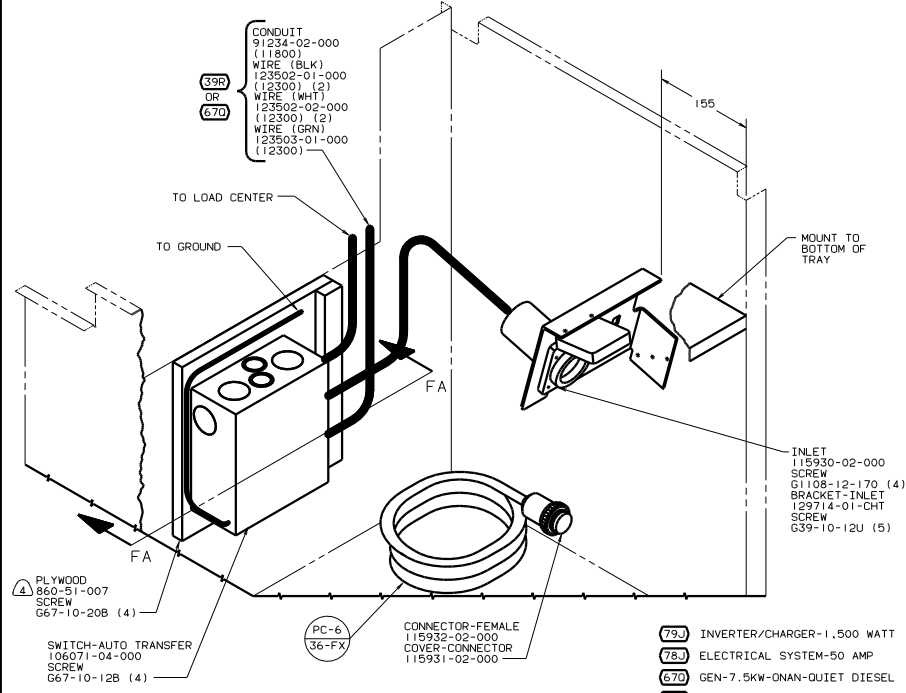
NO. OF SHEETS 6 OF 11 SHEET NO. 1 E 133502



VIEW FA-FA



INVERTER/CHARGER

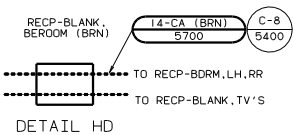
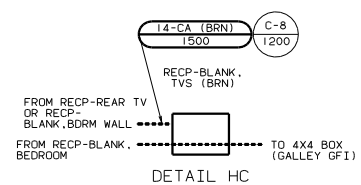
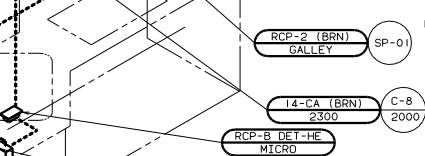
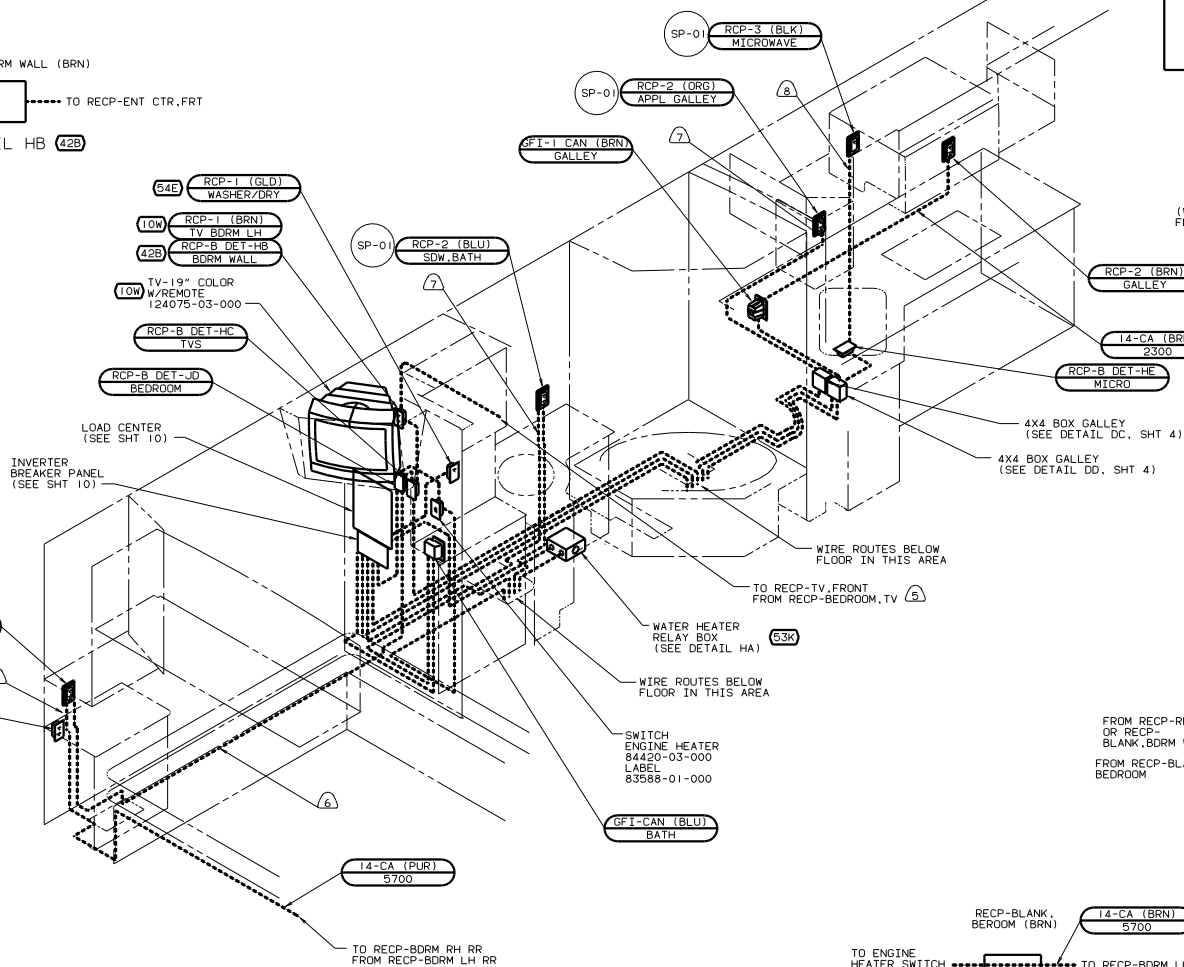
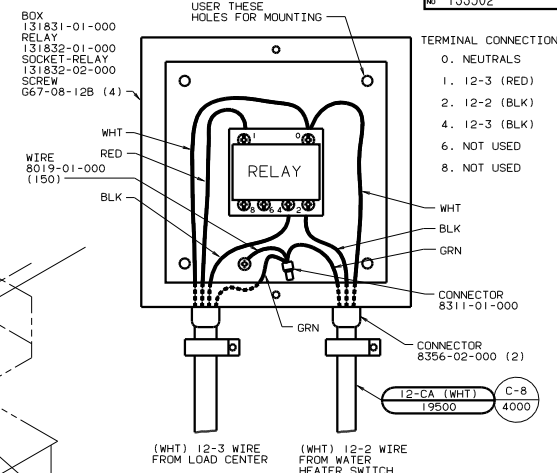
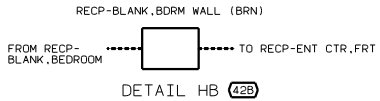
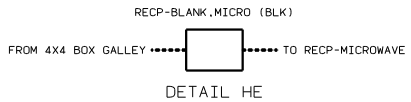


- CONNECT ROMEX FROM MAIN LOAD CENTER TO AC INPUT AND ROMEX TO SMALL SUB PANEL TO AC OUTPUT. USE WIRE NUTS AND STRAIN RELIEF CONNECTORS SUPPLIED WITH INVERTER/CHARGER. CONNECT REMOTE PANEL CONTROL CABLE TO CONNECTION ON BASE OF INVERTER/CHARGER.
- PAINT EXPOSED SURFACES BLACK WITH 106112-01-000.
- ALL 110V STRANDED WIRE W/O TERMINALS TO BE STRIPPED 10MM AND SOLDER DIPPED.
- GROUND WIRES NOT SHOWN FOR CLARITY.
- ALL WIRES TO BE CLAMPED WITHIN 200 OF BOX.

FOR ELECTRICAL TORQUE SPECIFICATIONS SEE DWG NO 128783-01-000

FOR ELECTRICAL CALLOUTS SEE DWG NO 121339-01-000

- INVERTER/CHARGER-1.500 WATT
- ELECTRICAL SYSTEM-50 AMP
- GEN-7.5KW-ONAN-QUIET DIESEL
- GEN-6.5KW-ONAN-LP-MARQUIS
- INVERTER/CHARGER 2.0 KW
- CODES/STANDARDS USA



- (8) WIRE IN SIDEWALL.
- (7) WIRE ROUTED THRU SIDEWALL.
- (6) ROUTE WIRE THRU FLOOR.
- (5) WIRE IN ROOF.

- SEE WIRING DIAGRAM-BODY FOR ADDITIONAL INFORMATION.
- ALL GROUND WIRES ARE TO BE COVERED WITH TUBING 8041-02-000.
- ALL WIRES ARE TO BE CLAMPED WITH CLAMP 10497-05-000 WITHIN 200 OF OUTLET BOXES AND SPLICES, USE SCREW G67-10-12B OR 39-10-12B.
- ALL WIRE TO BE CLAMPED WITH CLAMP 10495-01-000 OR CLIP 80734-02-000 EVERY 600, USE SCREW G67-10-12B UNLESS OTHERWISE SPECIFIED.

- (78J) ELECTRICAL SYSTEM-50 AMP
- (54E) WASHER/DRYER
- (53K) WTR HTR-10GAL/ELECTRIC/LPGAS
- (42B) TV, REAR-WITHOUT
- (26S) CODES/STANDARDS-CSA/CMVSS
- (26L) REAR STEREO SYSTEM W/CASSETTE
- (25E) REAR STEREO SYSTEM W/CD
- (10W) TV-REAR

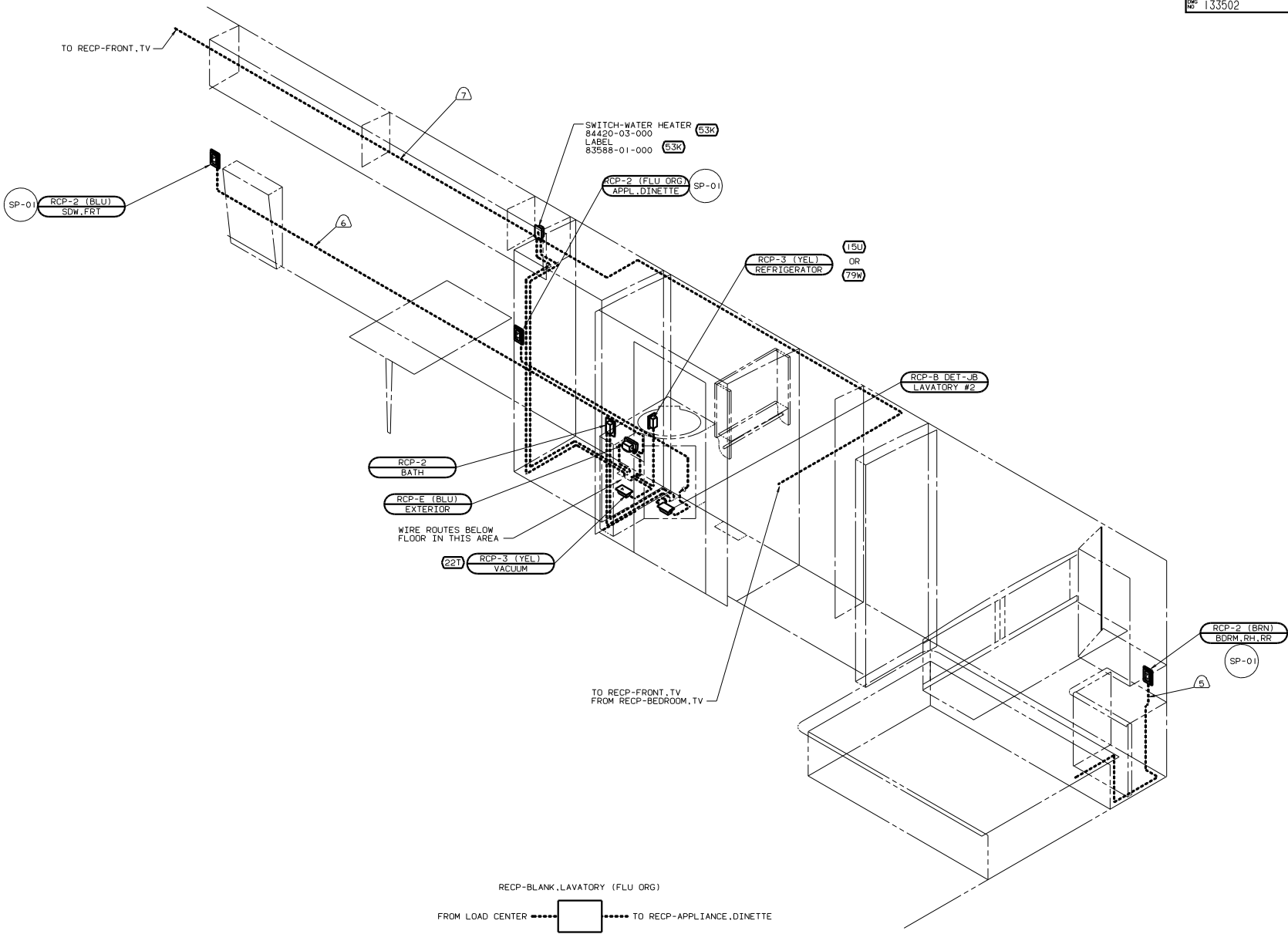
FOR ELECTRICAL TORQUE SPECIFICATIONS SEE DWG NO. 128783-01-000

FOR ELECTRICAL CALLOUTS SEE DWG NO. 121339-01-000

00 040J/JD (26S) (78J)

WIRING INSTL-BODY (110150CSA)

133502



- ⑦ WIRE IN ROOF.
- ⑥ WIRE IN SIDEWALL.
- ⑤ WIRE ROUTED THRU SIDEWALL.
- 4. SEE WIRING DIAGRAM-BODY FOR ADDITIONAL INFORMATION.
- 3. ALL GROUND WIRES ARE TO BE COVERED WITH TUBING 8041-02-000.
- 2. ALL WIRES ARE TO BE CLAMPED WITH CLAMP 10497-05-000 WITHIN 200 OF OUTLET BOXES AND SPLICES. USE SCREW G67-10-12B OR G39-10-12B.
- 1. ALL WIRE TO BE CLAMPED WITH CLAMP 10495-01-000 OR CLIP 80734-02-000 EVERY 600. USE SCREW G67-10-12B UNLESS OTHERWISE SPECIFIED.

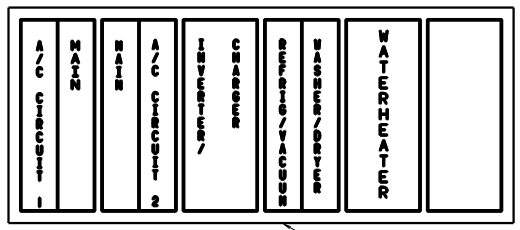
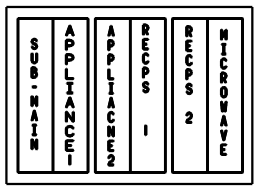
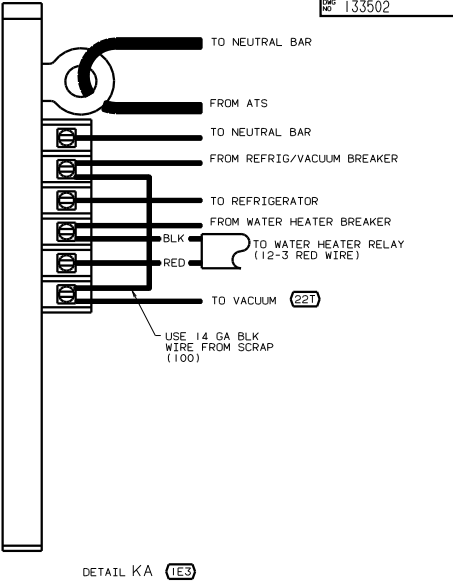
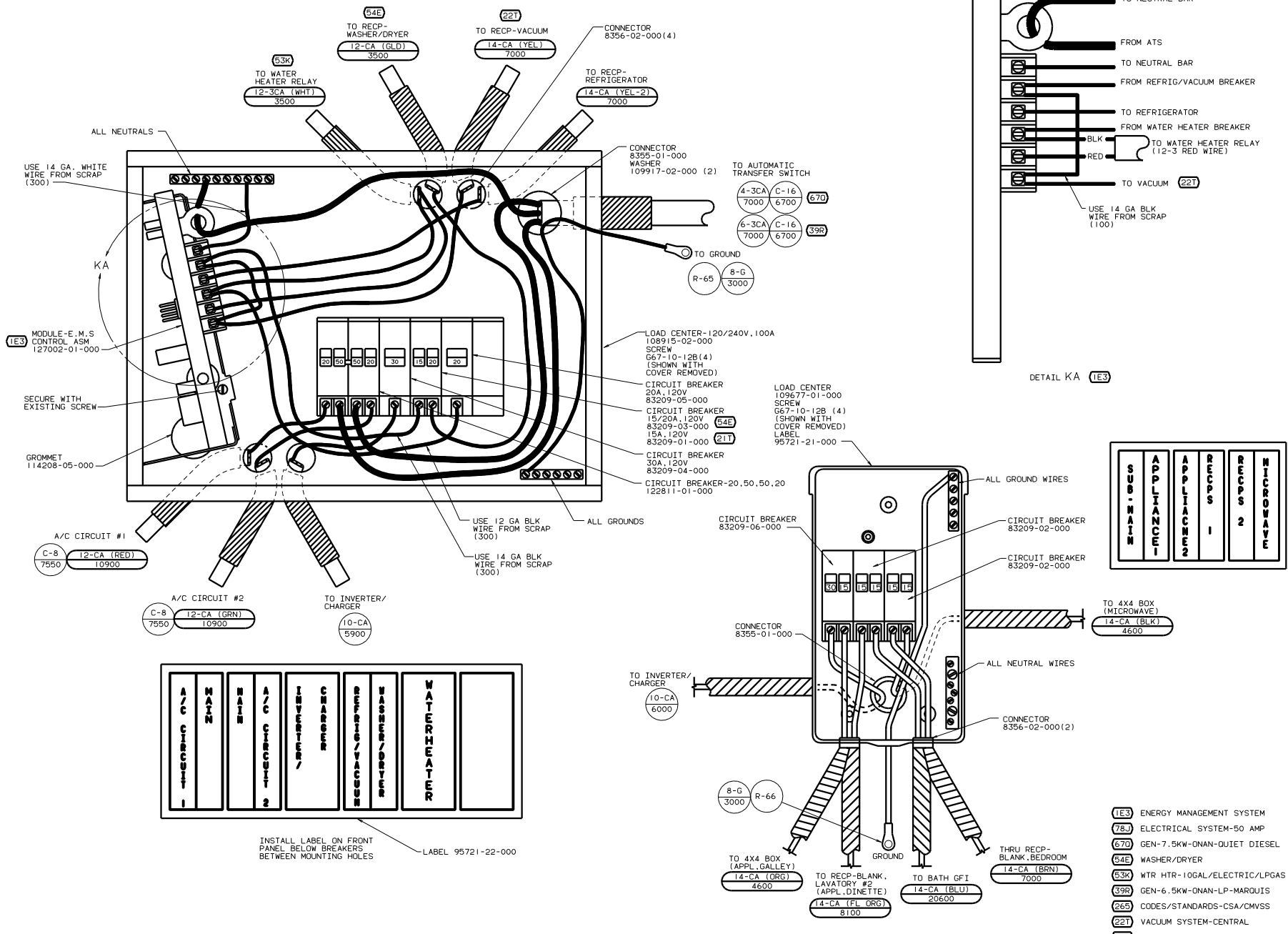
NOTES:

- ⑤3K WTR HTR-10GAL/ELECTRIC/LPGAS
- ⑦9W REFRIGERATOR-4 DOOR
- ⑦8J ELECTRICAL SYSTEM-50 AMP
- ②65 CODES/STANDARDS-CSA/CMVSS
- ②21 VACUUM SYSTEM-CENTRAL
- ①5U REFRIGERATOR/FRZR W/ICEMAKER

FOR ELECTRICAL TORQUE SPECIFICATIONS SEE DWG NO. 128783-01-000

FOR ELECTRICAL CALL-OUTS SEE DWG NO. 121339-01-000

00 040J/JD	②65	⑦8J
TITLE: WIRING INSTL-BODY (110R50CA)		
SHEET 9 OF 11		FIG NO 133502



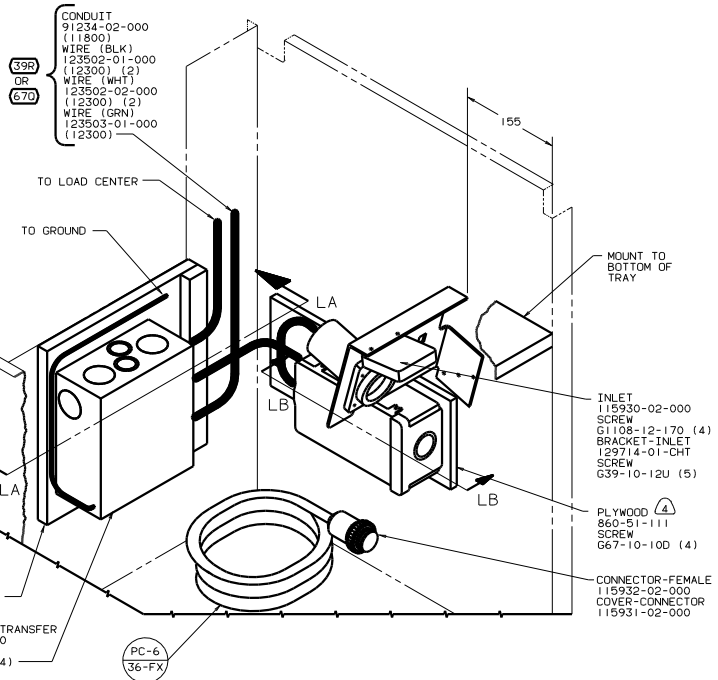
INSTALL LABEL ON FRONT PANEL BELOW BREAKERS BETWEEN MOUNTING HOLES LABEL 95721-22-000

2. WIRE MUST BE 600 LONG INSIDE BOX, ALL OTHERS TO BE 300.
 1. ALL GROUND WIRES TO BE COVERED WITH TUBING 8041-02-000.

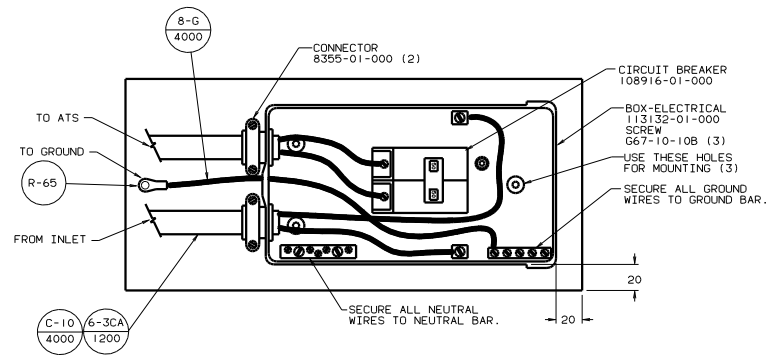
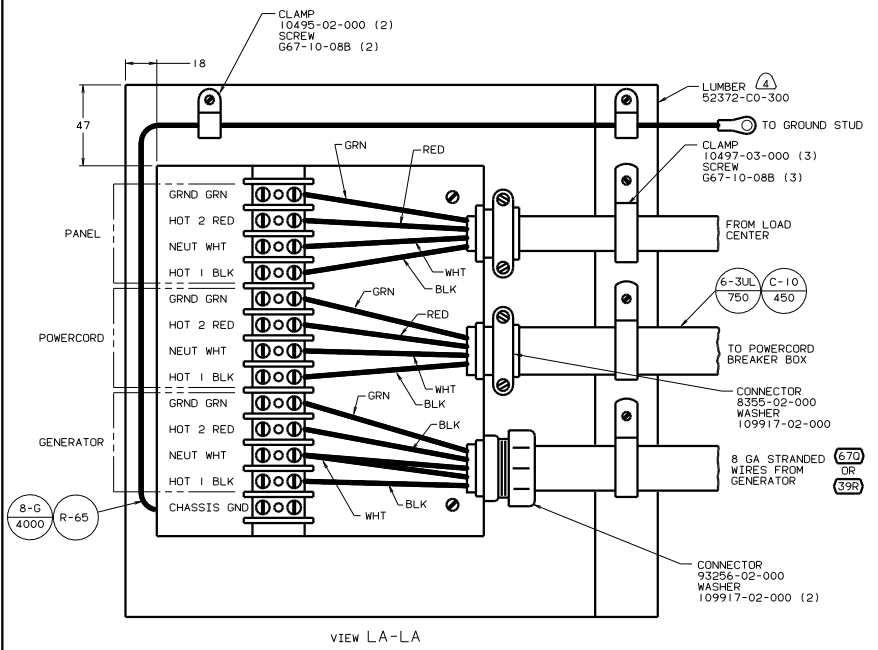
FOR ELECTRICAL TORQUE SPECIFICATIONS SEE DWG NO. 128783-01-000

FOR ELECTRICAL CALLOUTS SEE DWG NO. 121339-01-000

(1E3)	ENERGY MANAGEMENT SYSTEM
(78J)	ELECTRICAL SYSTEM-50 AMP
(670)	GEN-7.5KW-ONAN-QUIET DIESEL
(54E)	WASHER/DRYER
(53K)	WTR HTR-10GAL/ELECTRIC/LPGAS
(39R)	GEN-6.5KW-ONAN-LP-MARQUIS
(26S)	CODES/STANDARDS-CSA/CMVSS
(21T)	VACUUM SYSTEM-CENTRAL
(21T)	WASHER/DRYER-WITHOUT
00 Q40J/JD (26S) (78J)	
TITLE: WIRING INSTL-BODY (50 LC US)	
DATE: 10/20/2010	REV: 1
SHEET: 10 OF 11	DWG NO: 133502



- (A) PAINT EXPOSED SURFACES BLACK WITH 106112-01-000.
3. ALL 110V STRANDED WIRE W/O TERMINALS TO BE STRIPPED 10MM AND SOLDER DIPPED.
2. GROUND WIRES NOT SHOWN FOR CLARITY.
1. ALL WIRES TO BE CLAMPED WITHIN 200 OF BOX.



- (7B) ELECTRICAL SYSTEM-50 AMP
- (670) GEN-7.5KW-ONAN-QUIET DIESEL
- (39R) GEN-6.5KW-ONAN-LP-MARQUIS
- (265) CODES/STANDARDS-CSA/CMVSS

FOR ELECTRICAL TORQUE SPECIFICATIONS SEE DWG NO. 128783-01-000

(X-X)

FOR ELECTRICAL CALLOUTS SEE DWG NO. 121339-01-000

00 Q40J/JD (265) (7B)

TITLE: WIRING INSTL-BODY(ATS)

NO. OF SHEETS: 2 SHEET NO. 1 OF 2

DATE: 133502