



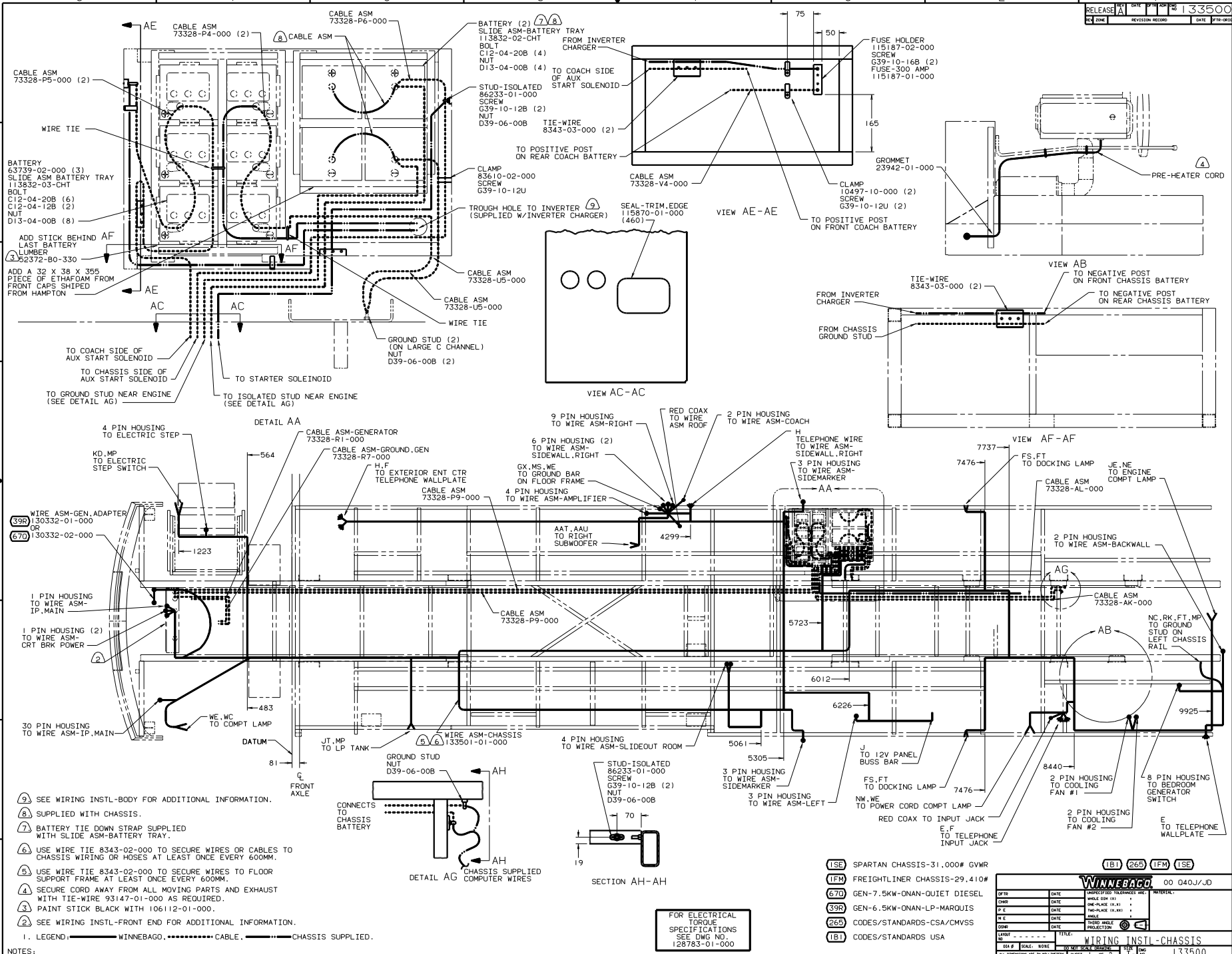
DANGER

Danger of electrical shock, burns or death. Always remove all power sources before attempting any repair, service or diagnostic work. Power can be present from shore power, generator, inverter or battery. All power sources must be disabled and secured before performing any service.



CAUTION

If you lack the skills, tools or equipment to perform diagnostic or repair work leave such work to an authorized Winnebago Industries dealer or other qualified shop.



- ③ SEE WIRING INSTL-BODY FOR ADDITIONAL INFORMATION.
- ④ SUPPLIED WITH CHASSIS.
- ⑦ BATTERY TIE DOWN STRAP SUPPLIED WITH SLIDE ASM-BATTERY TRAY.
- ⑥ USE WIRE TIE 8343-02-000 TO SECURE WIRES OR CABLES TO CHASSIS WIRING OR HOSES AT LEAST ONCE EVERY 600MM.
- ⑤ USE WIRE TIE 8343-02-000 TO SECURE WIRES TO FLOOR SUPPORT FRAME AT LEAST ONCE EVERY 600MM.
- ④ SECURE CORD AWAY FROM ALL MOVING PARTS AND EXHAUST WITH TIE-WIRE 93147-01-000 AS REQUIRED.
- ③ PAINT STICK BLACK WITH 106112-01-000.
- ② SEE WIRING INSTL-FRONT END FOR ADDITIONAL INFORMATION.

1. LEGEND: — WINNEBAGO, CABLE, — CHASSIS SUPPLIED.

- (15E) SPARTAN CHASSIS-31,000# GVWR
- (15M) FREIGHTLINER CHASSIS-29,410#
- (670) GEN-7.5KW-ONAN-QUIET DIESEL
- (39R) GEN-6.5KW-ONAN-LP-MARQUIS
- (265) CODES/STANDARDS-CSA/CMVSS
- (1B1) CODES/STANDARDS-USA

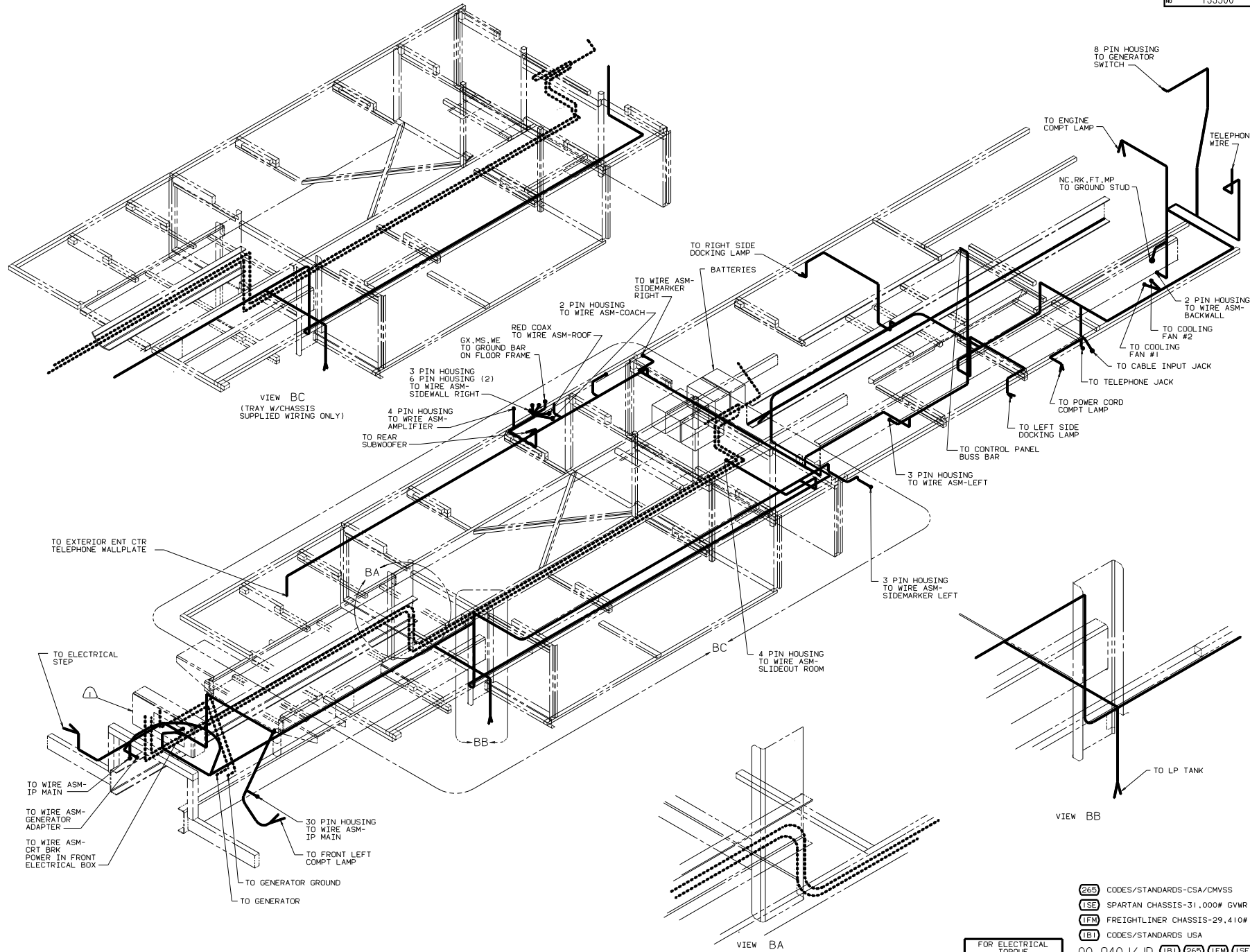
FOR ELECTRICAL TORQUE SPECIFICATIONS SEE DWG NO. 128783-01-000

(1B1) (265) (15M) (15E) 00 040J/JD

WINNEBAGO

DATE	DESCRIPTION	BY	CHKD

WIRING INSTL-CHASSIS
 SHEET 1 OF 2
 133500



SEE WIRING INSTL-FRONT END FOR ADDITIONAL INFORMATION.

FOR ELECTRICAL TORQUE SPECIFICATIONS SEE DWG NO. 128783-01-000

265	CODES/STANDARDS-CSA/CMVSS
ISE	SPARTAN CHASSIS-31.000# GVWR
IFM	FREIGHTLINER CHASSIS-29.410#
IBI	CODES/STANDARDS USA
00 Q40J/JD IBI 265 IFM ISE	
TITLE: WIRING INSTL-CHASSIS	
SHEET 2 OF 2	
133500	