



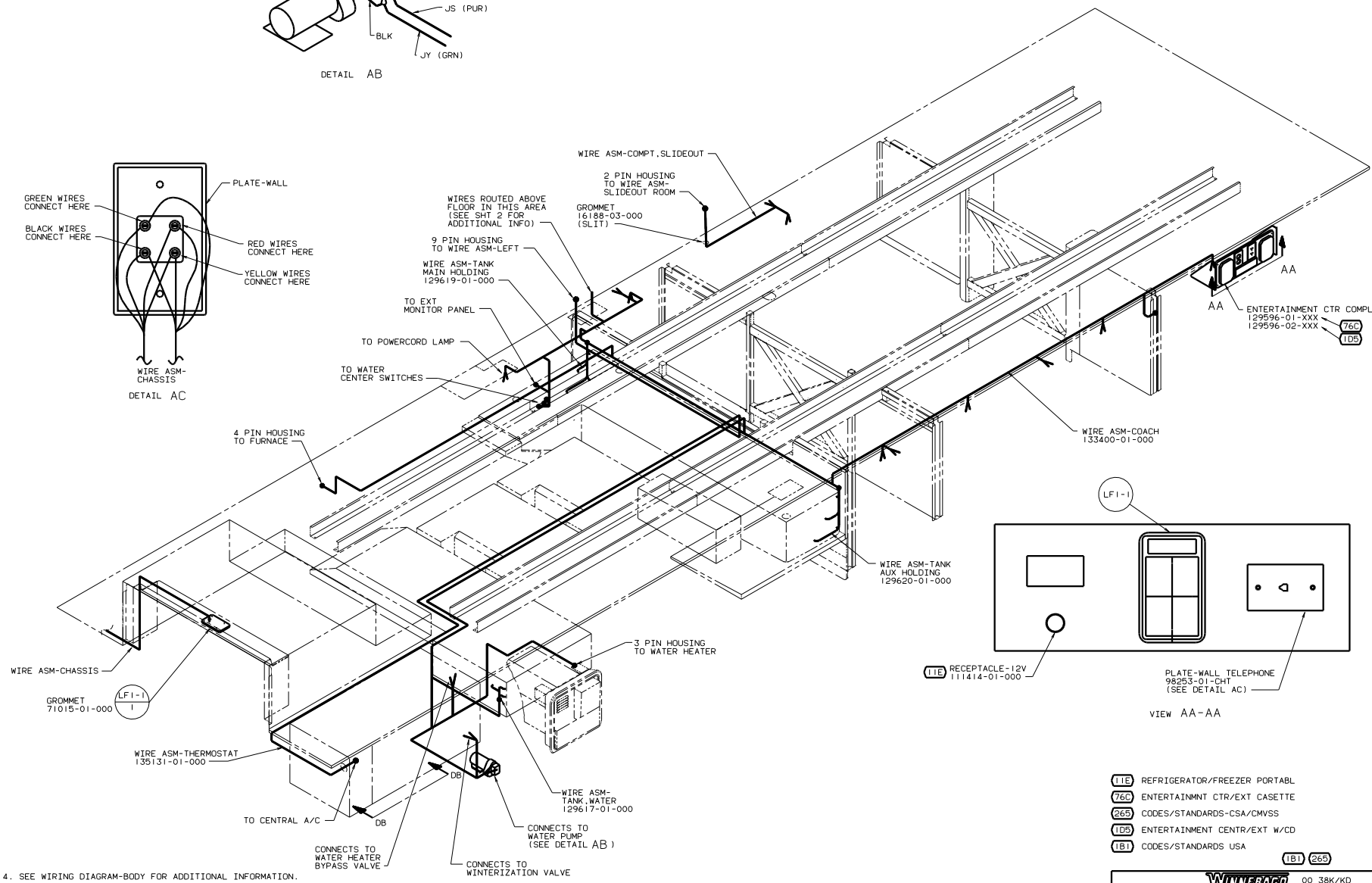
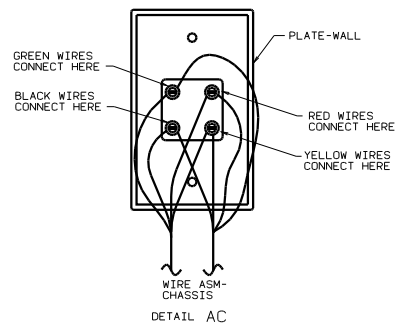
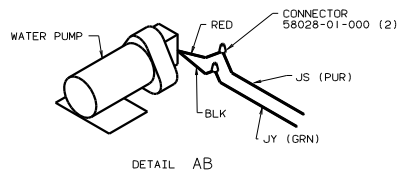
**DANGER**

**Danger of electrical shock, burns or death.** Always remove all power sources before attempting any repair, service or diagnostic work. Power can be present from shore power, generator, inverter or battery. All power sources must be disabled and secured before performing any service.



**CAUTION**

If you lack the skills, tools or equipment to perform diagnostic or repair work leave such work to an authorized Winnebago Industries dealer or other qualified shop.



4. SEE WIRING DIAGRAM-BODY FOR ADDITIONAL INFORMATION.
3. ALL GROUND WIRES ARE TO BE COVERED WITH TUBING 8041-02-000.
2. ALL WIRES ARE TO BE CLAMPED WITH CLAMP 10497-05-000 WITHIN 200 OF OUTLET BOXES AND SPLICES. USE SCREW G67-10-12B OR G39-10-12B.
1. ALL WIRE TO BE CLAMPED WITH CLAMP 10495-01-000 OR CLIP 80734-02-000 EVERY 600. USE SCREW G67-10-12B UNLESS OTHERWISE SPECIFIED.

- (11E) REFRIGERATOR/FREEZER PORTABL
- (76C) ENTERTAINMNT CTR/EXT CASSETTE
- (26S) CODES/STANDARDS-CSA/CMVSS
- (1D5) ENTERTAINMENT CENTR/EXT W/CD
- (1B1) CODES/STANDARDS USA

FOR ELECTRICAL TORQUE SPECIFICATIONS SEE DWG NO. 128783-01-000

FOR ELECTRICAL CALLOUTS SEE DWG NO. 121339-01-000

WINNEBAGO 00 38K/KD

OF IN	DATE	UNSPECIFIED TOLERANCES ARE:	MATERIAL
OMP	DATE	WHOLE DIMS .015	
PIE	DATE	ONE-PLACE (.001)	
D/E	DATE	ANGLE	
COMP	DATE	THRU WALK PRODUCTION	

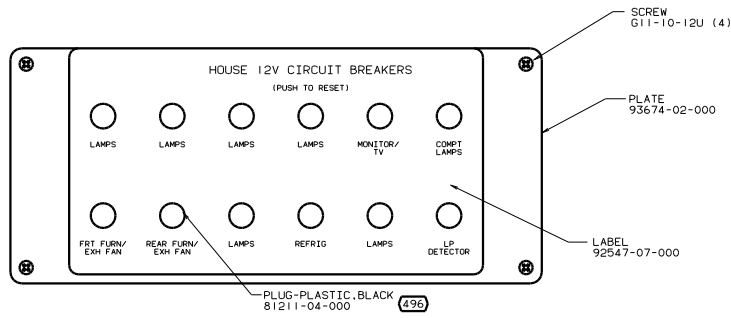
WIRING INSTL-BODY, 12V (12 BF)

SHEET 1 OF 8

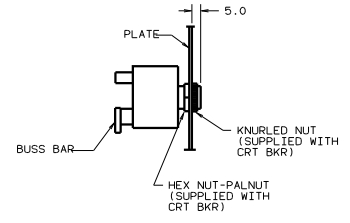
REF: 128791



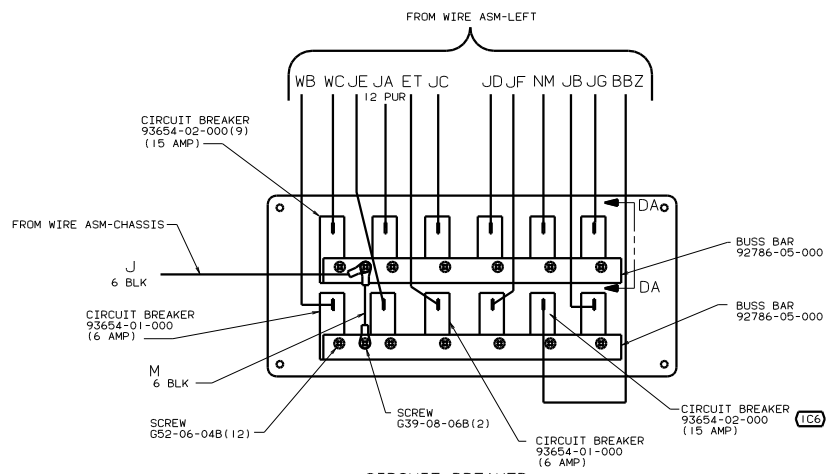




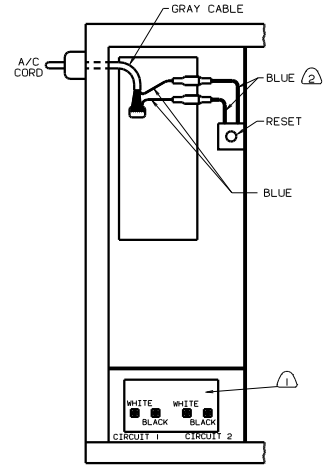
CIRCUIT BREAKER (FRONT VIEW)



SECTION DA-DA



CIRCUIT BREAKER (BACK VIEW)



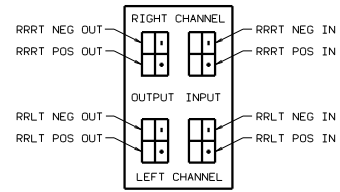
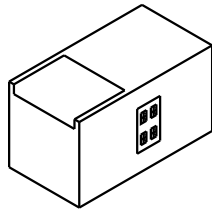
VIEW DB-DB

- 2 CONNECT BLUE WIRES FROM RESET TO THE BLUE WIRES WITH SPADE TERMINALS ON A/C CORD WITH (294) & (9L1) FEATURE.
- 1 SEE WIRING INSTL-BODY, 110V FOR ADDITIONAL INFORMATION

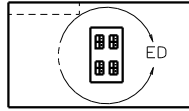
FOR ELECTRICAL TORQUE SPECIFICATIONS SEE DWG NO. 128783-01-000

- (496) FURNACE WITHOUT
- (265) CODES/STANDARDS-CSA/CMVSS
- (1C6) FURNACE-25,000 BTU
- (1B1) CODES/STANDARDS USA
- 00 Q38K/KD (1B1) (265)

TITLE		WIRING INSTL-BODY(12 BP)	
30 NO. 5004 200000	REV	1	133382
SHEET		4 of 8	

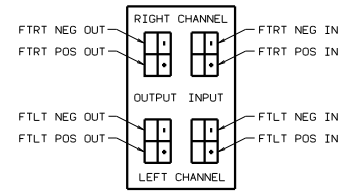
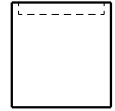


DETAIL ED

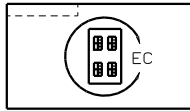


VIEW EB-EB  
(SHT 3)

REAR BOSE WOOFER



DETAIL EC



VIEW EA-EA  
(SHT 2)

FRONT BOSE WOOFER

FOR ELECTRICAL TORQUE SPECIFICATIONS SEE DWG NO. 128783-01-000

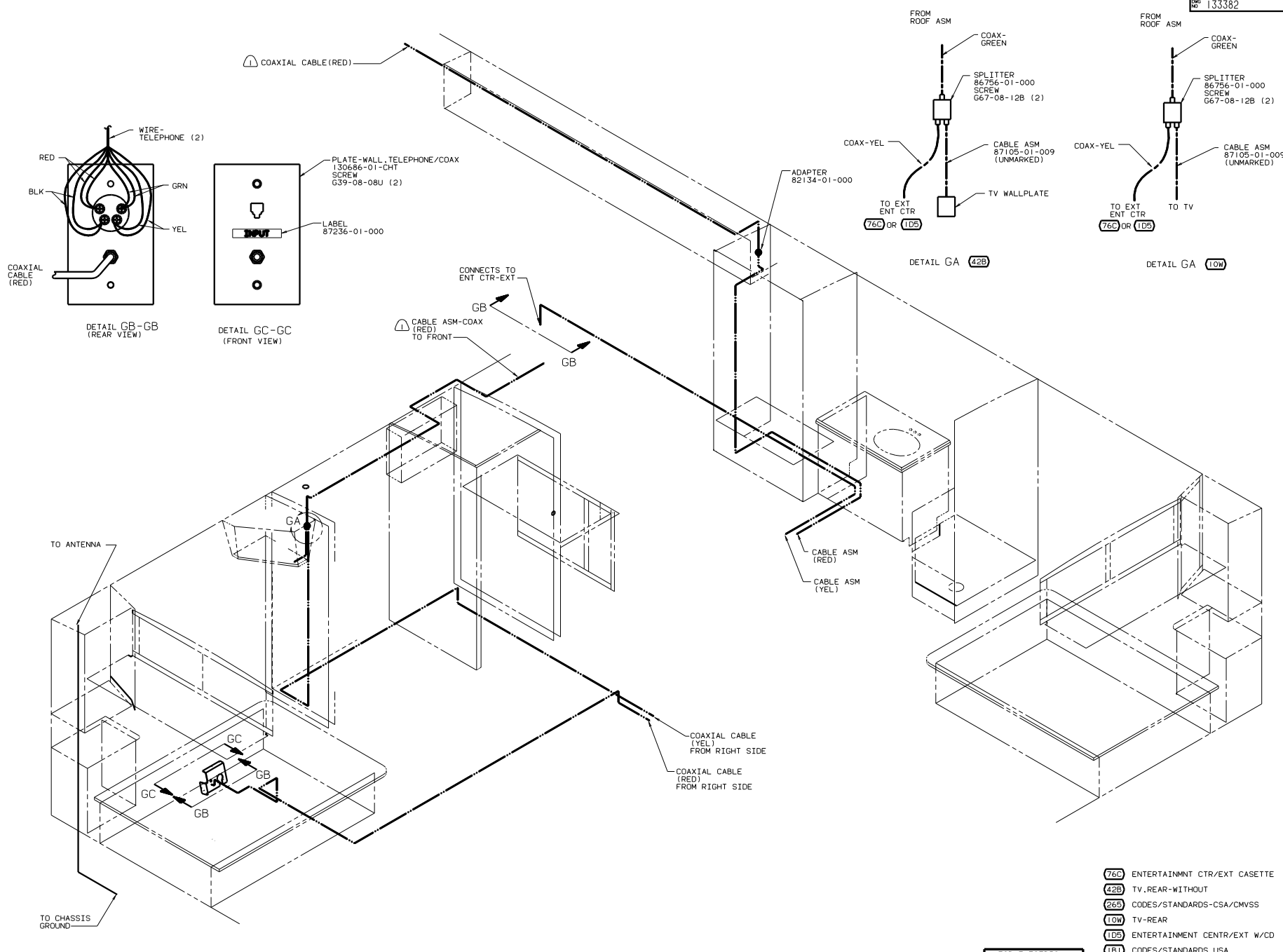
(265) CODES/STANDARDS-CSA/CMVSS  
(1B1) CODES/STANDARDS USA

00 Q38K/KD (1B1) (265)

WIRING INSTL - BODY (DLX SND)  
SHEET 5 OF 8

NOTES:





2. COAX CABLES ARE ASSEMBLED IN THE WIRE ASSEMBLIES.  
 ⚠ COAX ROUTED IN ROOF.

NOTES:

DETAIL GA 42B

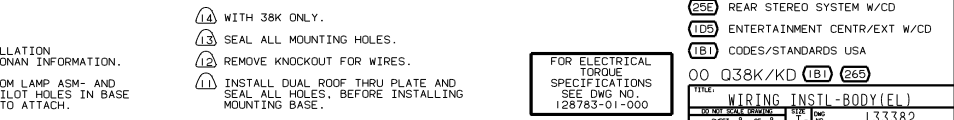
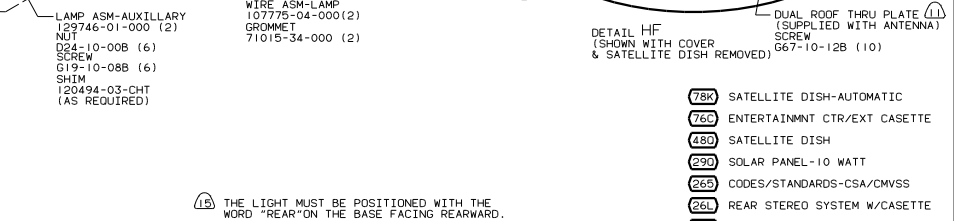
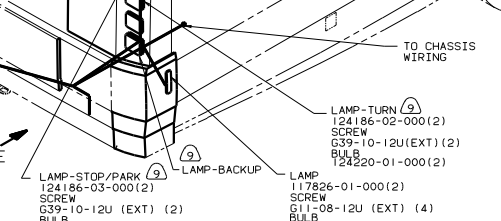
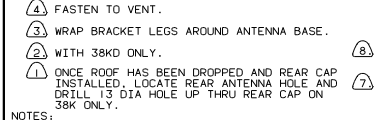
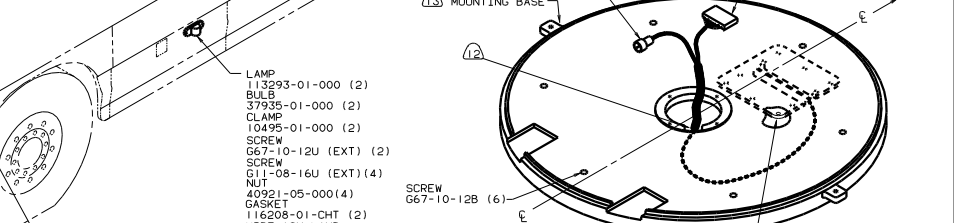
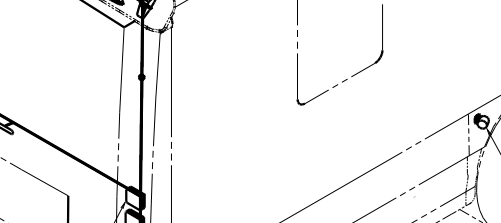
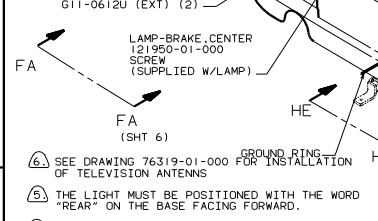
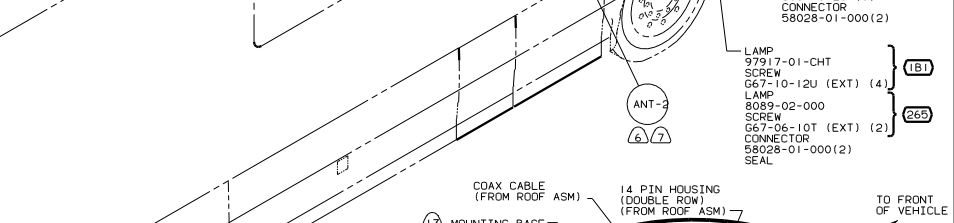
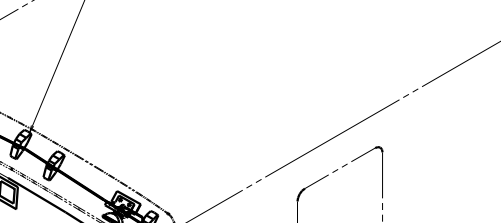
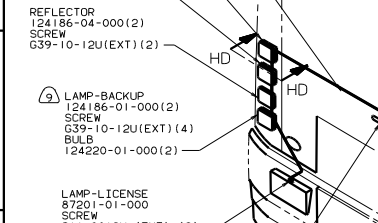
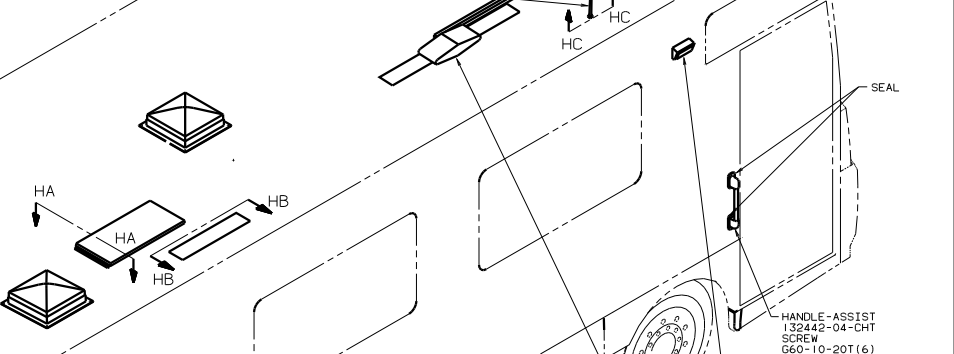
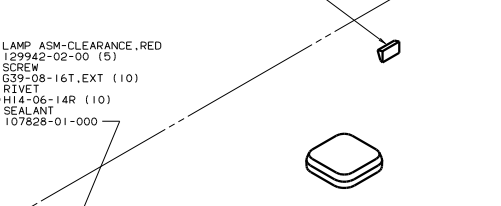
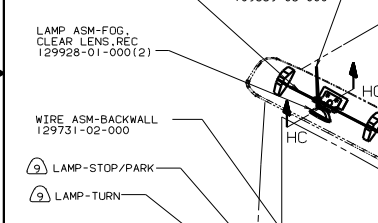
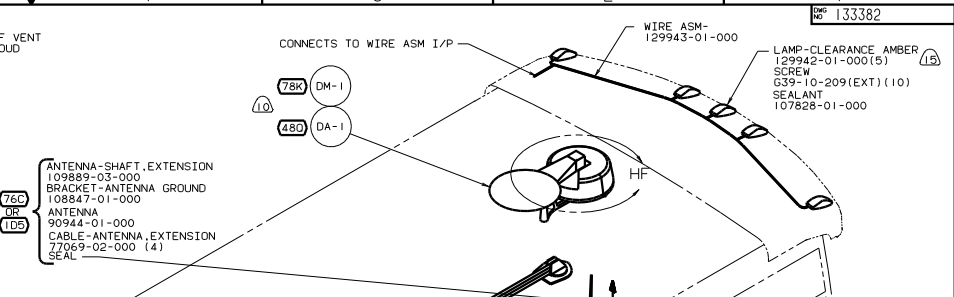
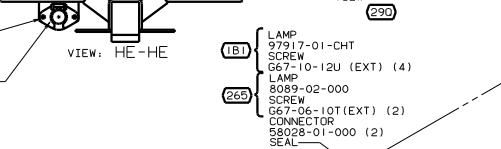
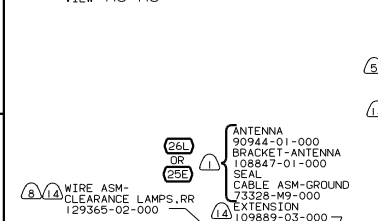
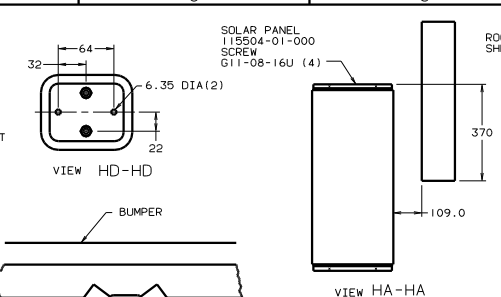
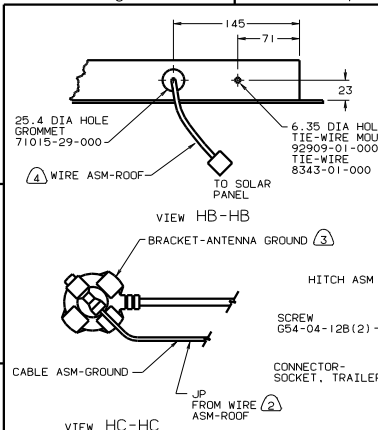
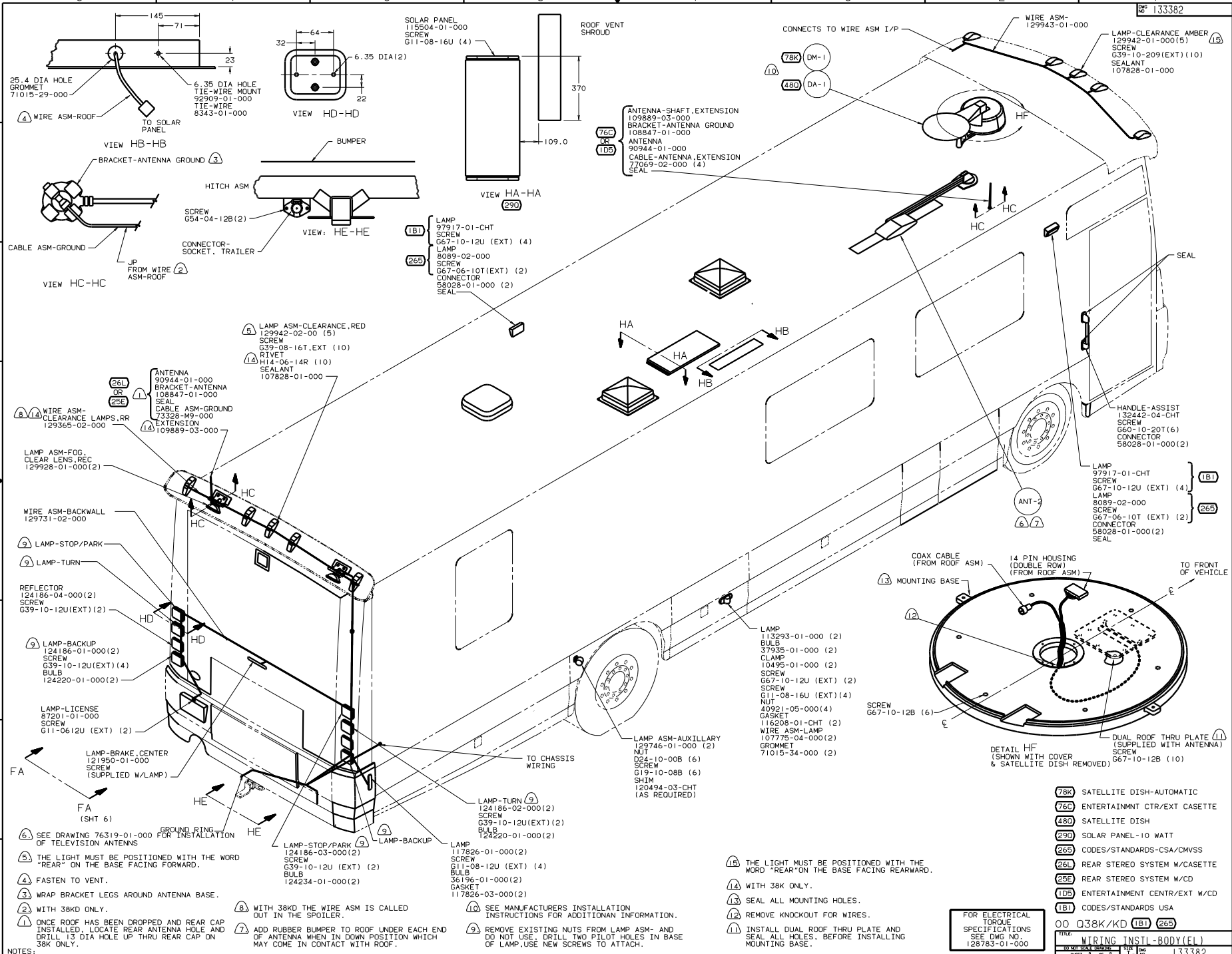
DETAIL GA 10W

- 76C ENTERTAINMENT CTR/EXT CASSETTE
- 42B TV, REAR-WITHOUT
- 265 CODES/STANDARDS-CSA/CMVSS
- 10W TV-REAR
- 1D5 ENTERTAINMENT CENTR/EXT W/CD
- 1B1 CODES/STANDARDS USA

FOR ELECTRICAL  
 TORQUE  
 SPECIFICATIONS  
 SEE DWG NO.  
 128783-01-000

00 Q38K/KD 1B1 265	
TITLE:	WIRING INSTL-BODY(COAX)
DO NOT SCALE DRAWING	REV. NO.
SHEET 7 OF 8	133382





- (181) LAMP 97917-01-CHT
- (265) SCREW G67-10-12U (EXT) (4)
- LAMP 8089-02-000
- SCREW G67-06-10T (EXT) (2)
- CONNECTOR 58028-01-000 (2)
- SEAL

- (6) SEE DRAWING 76319-01-000 FOR INSTALLATION OF TELEVISION ANTENNAS.
- (5) THE LIGHT MUST BE POSITIONED WITH THE WORD "REAR" ON THE BASE FACING FORWARD.
- (4) FASTEN TO VENT.
- (3) WRAP BRACKET LEGS AROUND ANTENNA BASE.
- (2) WITH 38K ONLY.
- (1) ONCE ROOF HAS BEEN DROPPED AND REAR CAP INSTALLED, LOCATE REAR ANTENNA HOLE AND DRILL 13 DIA HOLE UP THRU REAR CAP ON 38K ONLY.

- (5) LAMP ASM-CLEARANCE, RED 129942-02-00 (5)
- SCREW G39-08-16T, EXT (10)
- RIVET H14-06-14R (10)
- SEALANT 107828-01-000
- (13) WIRE ASM-CLEARANCE LAMPS, RR 129365-02-000
- (26L OR 26E) ANTENNA 90944-01-000
- BRACKET-ANTENNA 108847-01-000
- SEAL CABLE ASM-GROUND 109889-03-000
- (9) LAMP ASM-FOG, CLEAR LENS, REC 129928-01-000(2)
- WIRE ASM-BACKWALL 129731-02-000
- (9) LAMP-STOP/PARK
- (9) LAMP-TURN
- REFLECTOR 124186-04-000(2)
- SCREW G39-10-12U(EXT) (2)
- (9) LAMP-BACKUP 124186-01-000(2)
- SCREW G39-10-12U(EXT) (4)
- BULB 124220-01-000(2)
- LAMP-LICENSE 121950-01-000
- SCREW G11-0612U (EXT) (2)
- LAMP-BRAKE, CENTER 121950-01-000
- SCREW (SUPPLIED W/LAMP)
- FA (SHT 6)
- (6) SEE DRAWING 76319-01-000 FOR INSTALLATION OF TELEVISION ANTENNAS.
- (5) THE LIGHT MUST BE POSITIONED WITH THE WORD "REAR" ON THE BASE FACING FORWARD.
- (4) FASTEN TO VENT.
- (3) WRAP BRACKET LEGS AROUND ANTENNA BASE.
- (2) WITH 38K ONLY.
- (1) ONCE ROOF HAS BEEN DROPPED AND REAR CAP INSTALLED, LOCATE REAR ANTENNA HOLE AND DRILL 13 DIA HOLE UP THRU REAR CAP ON 38K ONLY.

- (9) LAMP-TURN 124186-02-000(2)
- SCREW G39-10-12U(EXT) (2)
- BULB 124220-01-000(2)
- (9) LAMP-BACKUP 124186-03-000(2)
- SCREW G39-10-12U (EXT) (2)
- BULB 124234-01-000(2)
- (9) LAMP 117826-01-000(2)
- SCREW G11-08-12U (EXT) (4)
- BULB 36196-01-000(2)
- GASKET 117826-03-000(2)
- (10) SEE MANUFACTURERS INSTALLATION INSTRUCTIONS FOR ADDITIONAL INFORMATION.
- (9) REMOVE EXISTING NUTS FROM LAMP ASM- AND DO NOT USE. DRILL TWO PILOT HOLES IN BASE OF LAMP, USE NEW SCREWS TO ATTACH.

- (15) THE LIGHT MUST BE POSITIONED WITH THE WORD "REAR" ON THE BASE FACING REARWARD.
- (14) WITH 38K ONLY.
- (13) SEAL ALL MOUNTING HOLES.
- (12) REMOVE KNOCKOUT FOR WIRES.
- (11) INSTALL DUAL ROOF THRU PLATE AND SEAL ALL HOLES, BEFORE INSTALLING MOUNTING BASE.

FOR ELECTRICAL TORQUE SPECIFICATIONS SEE DWG NO. 128783-01-000	
FILE:	WIRING INSTL-BODY(FL)
NO. THIS SHEET CONTAINS:	16
TOTAL NO. SHEETS:	8
DWG NO.	133382

- 78K SATTELLITE DISH-AUTOMATIC
- 76C ENTERTAINMENT CTR/EXT CASSETTE
- 48D SATTELLITE DISH
- 29D SOLAR PANEL-10 WATT
- 265 CODES/STANDARDS-CSA/CMVSS
- 26L REAR STEREO SYSTEM W/CASSETTE
- 26E REAR STEREO SYSTEM W/CD
- 1D5 ENTERTAINMENT CENTER/EXT W/CD
- 1B1 CODES/STANDARDS USA

00 Q38K/KD 1B1 265