



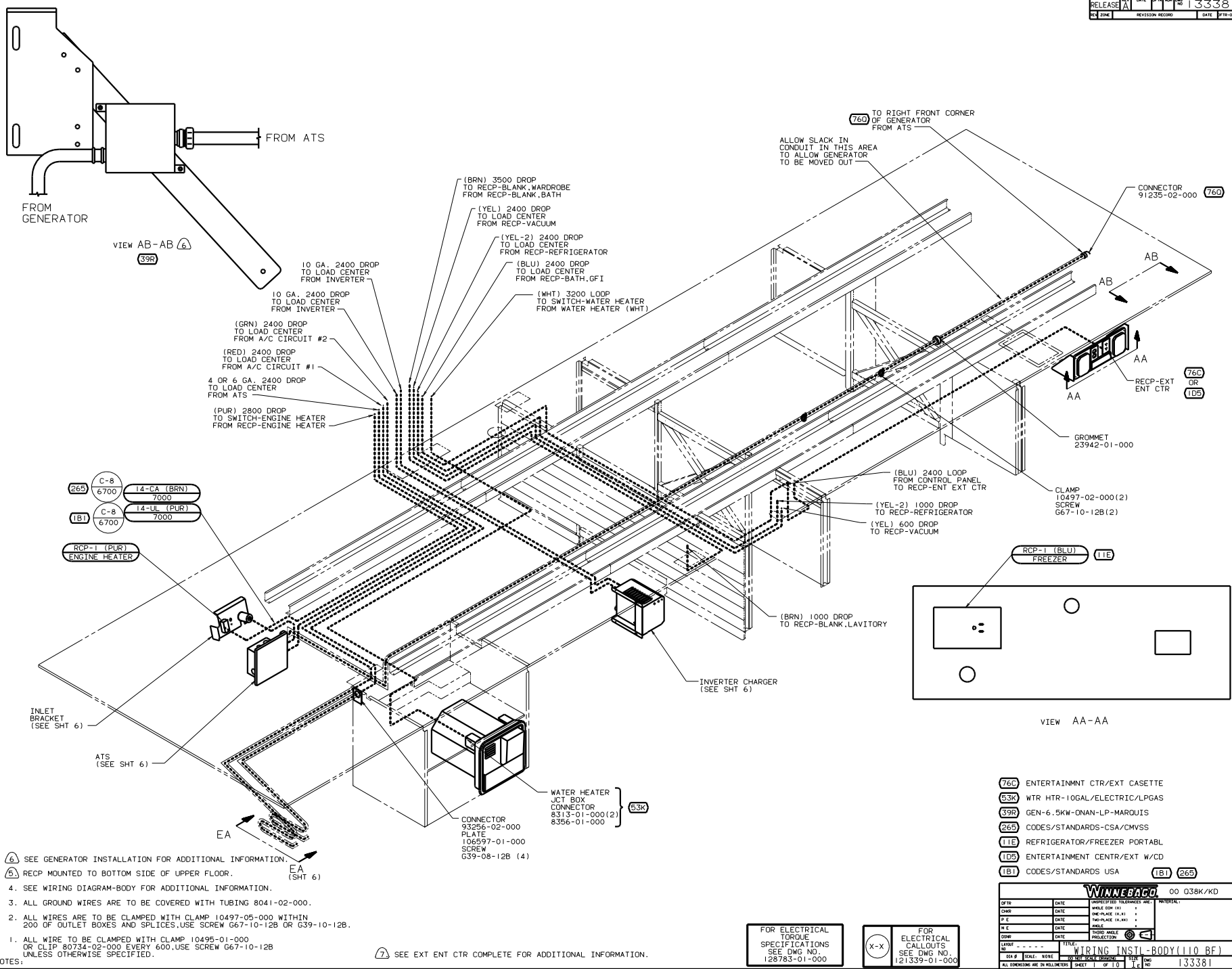
**DANGER**

**Danger of electrical shock, burns or death.** Always remove all power sources before attempting any repair, service or diagnostic work. Power can be present from shore power, generator, inverter or battery. All power sources must be disabled and secured before performing any service.



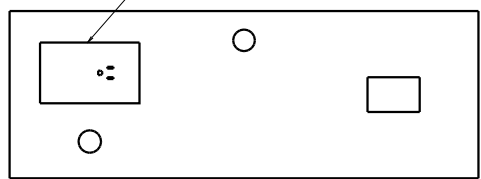
**CAUTION**

If you lack the skills, tools or equipment to perform diagnostic or repair work leave such work to an authorized Winnebago Industries dealer or other qualified shop.



VIEW AB-AB (6)  
 (39R)

CONNECTOR 91235-02-000 (76D)  
 RECP-EXT ENT CTR (76D OR 105)  
 GROMMET 23942-01-000  
 CLAMP 10497-02-000(2) SCREW G67-10-12B(2)



VIEW AA-AA

- (26S) C-8 6700 14-CA (BRN) 7000
- (1B) C-8 6700 14-UL (PUR) 7000
- RCP-1 (PUR) ENGINE HEATER

- RCP-1 (BLU) FREEZER (11E)

- (76D) ENTERTAINMNT CTR/EXT CASSETTE
- (53K) WTR HTR-10GAL/ELECTRIC/LPGAS
- (39R) GEN-6.5KW-QNAN-LP-MARQUIS
- (26S) CODES/STANDARDS-CSA/CMVSS
- (11E) REFRIGERATOR/FREEZER PORTABL
- (105) ENTERTAINMENT CTR/EXT W/CD
- (1B) CODES/STANDARDS USA (1B1) (26S)

- NOTES:
- (6) SEE GENERATOR INSTALLATION FOR ADDITIONAL INFORMATION.
  - (5) RECP MOUNTED TO BOTTOM SIDE OF UPPER FLOOR.
  4. SEE WIRING DIAGRAM-BODY FOR ADDITIONAL INFORMATION.
  3. ALL GROUND WIRES ARE TO BE COVERED WITH TUBING 8041-02-000.
  2. ALL WIRES ARE TO BE CLAMPED WITH CLAMP 10495-01-000 OR CLIP 80734-02-000 EVERY 600. USE SCREW G67-10-12B UNLESS OTHERWISE SPECIFIED.
  1. ALL WIRE TO BE CLAMPED WITH CLAMP 10495-01-000 OR CLIP 80734-02-000 EVERY 600. USE SCREW G67-10-12B UNLESS OTHERWISE SPECIFIED.

(7) SEE EXT ENT CTR COMPLETE FOR ADDITIONAL INFORMATION.

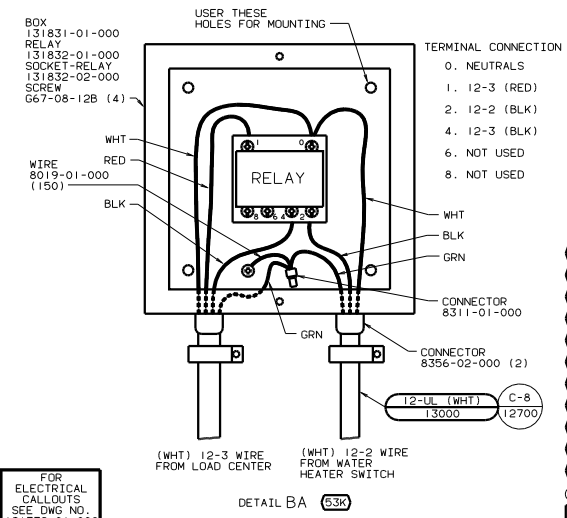
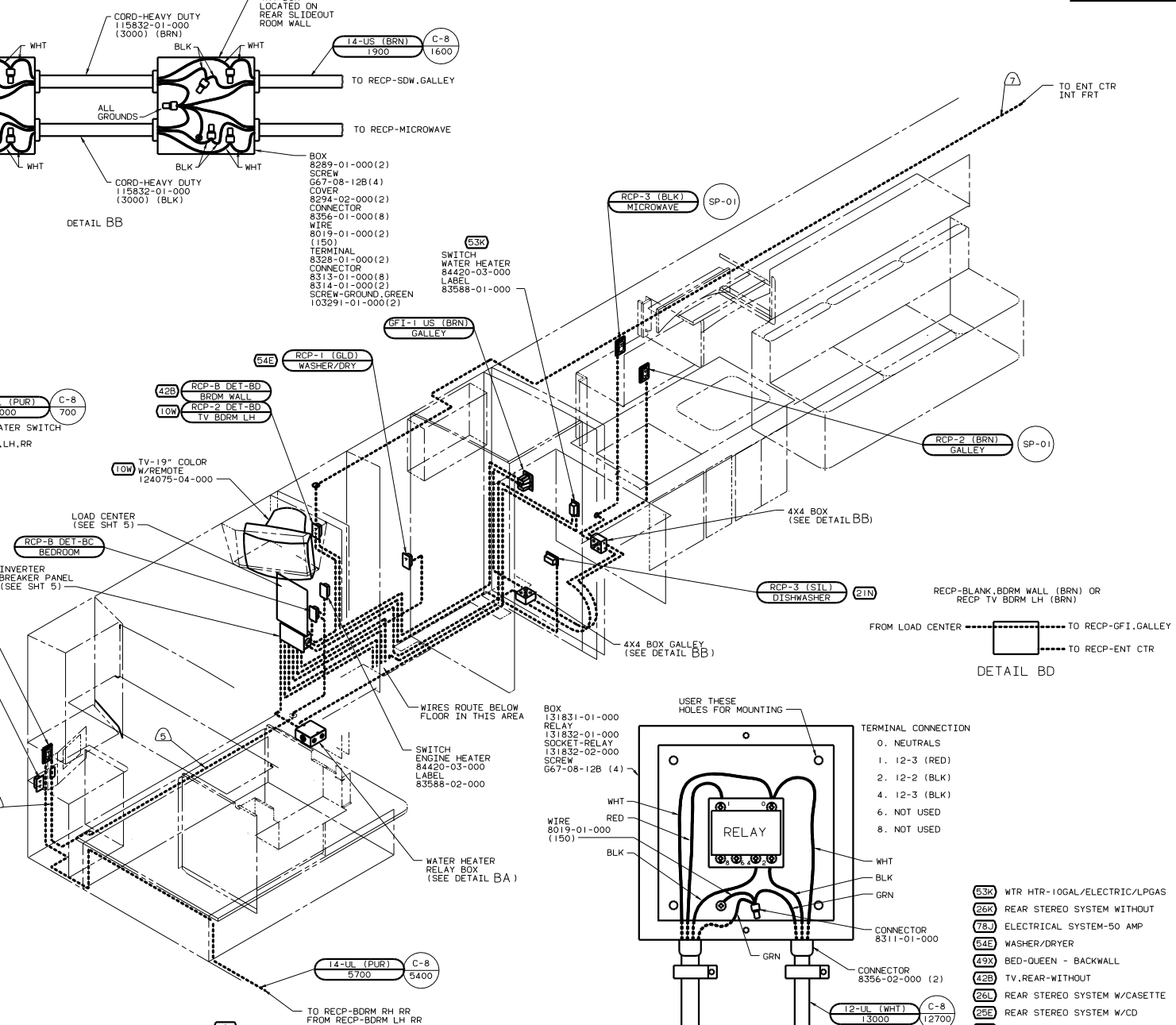
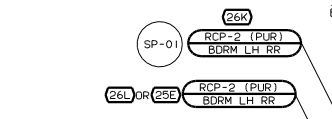
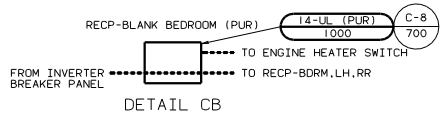
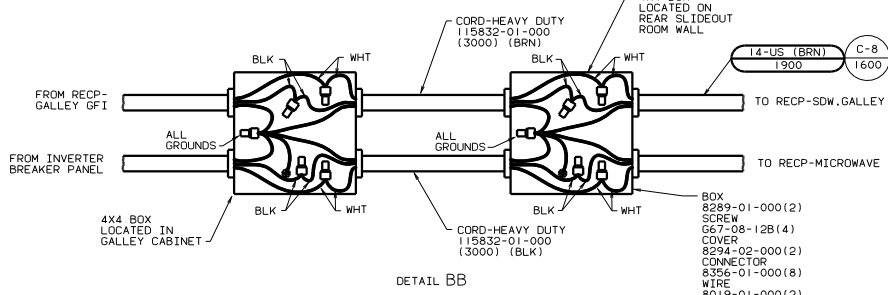
FOR ELECTRICAL TORQUE SPECIFICATIONS SEE DWG NO. 128783-01-000

(X-X) FOR ELECTRICAL CALLOUTS SEE DWG NO. 121339-01-000

WINNEBAGO 00 G38K/KD

DATE	UNSPECIFIED TOLERANCES ARE:	MATERIAL
DATE	WHOLE DIM (X)	
DATE	ONE-PLACE (X.X)	
DATE	TWO-PLACE (X.XX)	
DATE	THREE-PLACE (X.XXX)	
DATE	ANGLES	
DATE	INDIC. WHOLE DIMENSIONS	

REV # SCALE: NONE TO THE SCALE SHOWN  
 ALL DIMENSIONS ARE IN MILLIMETERS SHEET 1 OF 10  
 REF: 128791 AE 1 133381



TERMINAL CONNECTION	
0.	NEUTRALS
1.	12-3 (RED)
2.	12-2 (BLK)
4.	12-3 (BLK)
6.	NOT USED
8.	NOT USED

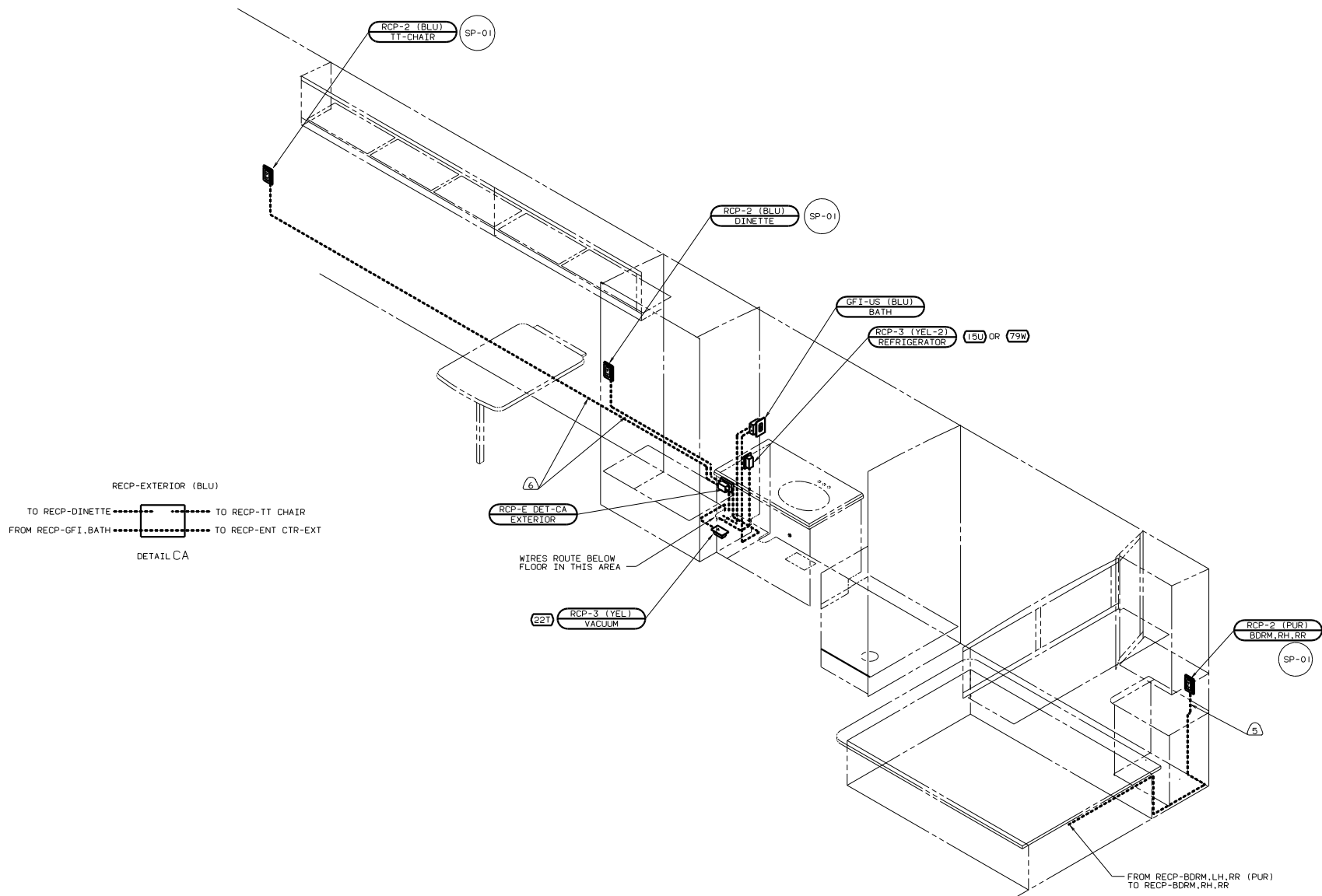
  

(53K)	WTR HTR-10GAL/ELECTRIC/LPGAS
(26K)	REAR STEREO SYSTEM WITHOUT
(78J)	ELECTRICAL SYSTEM-50 AMP
(54E)	WASHER/DRYER
(49X)	BED-QUEEN - BACKWALL
(42B)	TV-REAR-WITHOUT
(26L)	REAR STEREO SYSTEM W/CASSETTE
(25E)	REAR STEREO SYSTEM W/CD
(21N)	DISHWASHER/BUILT-IN
(10W)	TV-REAR
(1B)	CODES/STANDARDS USA

00 Q38K/KD (1B1)

- (7) WIRE ROUTED IN ROOF.  
 (6) WIRE ROUTED IN SIDEWALL.  
 (5) WIRE ROUTED IN ROOF.  
 4. SEE WIRING DIAGRAM-BODY FOR ADDITIONAL INFORMATION.  
 3. ALL GROUND WIRES ARE TO BE COVERED WITH TUBING 8041-02-000.  
 2. ALL WIRES ARE TO BE CLAMPED WITH CLAMP 10497-05-000 WITHIN 200 OF OUTLET BOXES AND SPLICES. USE SCREW G67-10-12B OR G39-10-12B.  
 1. ALL WIRE TO BE CLAMPED WITH CLAMP 10495-01-000 OR CLIP 80734-02-000 EVERY 600. USE SCREW G67-10-12B UNLESS OTHERWISE SPECIFIED.

FOR ELECTRICAL TORQUE SPECIFICATIONS SEE DWG NO. 128783-01-000	(X-X)	FOR ELECTRICAL CALLOUTS SEE DWG NO. 121339-01-000
--	-------	---



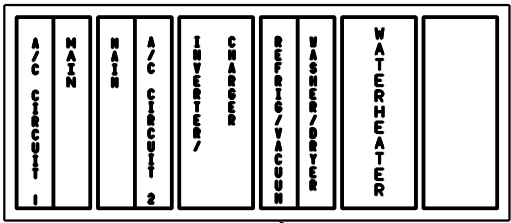
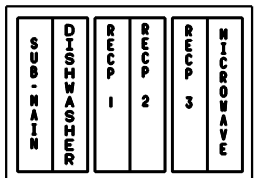
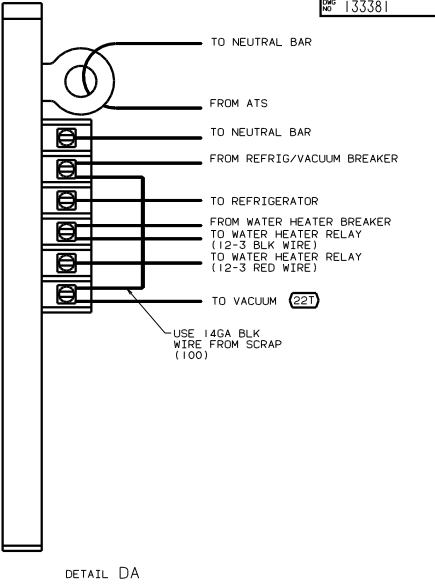
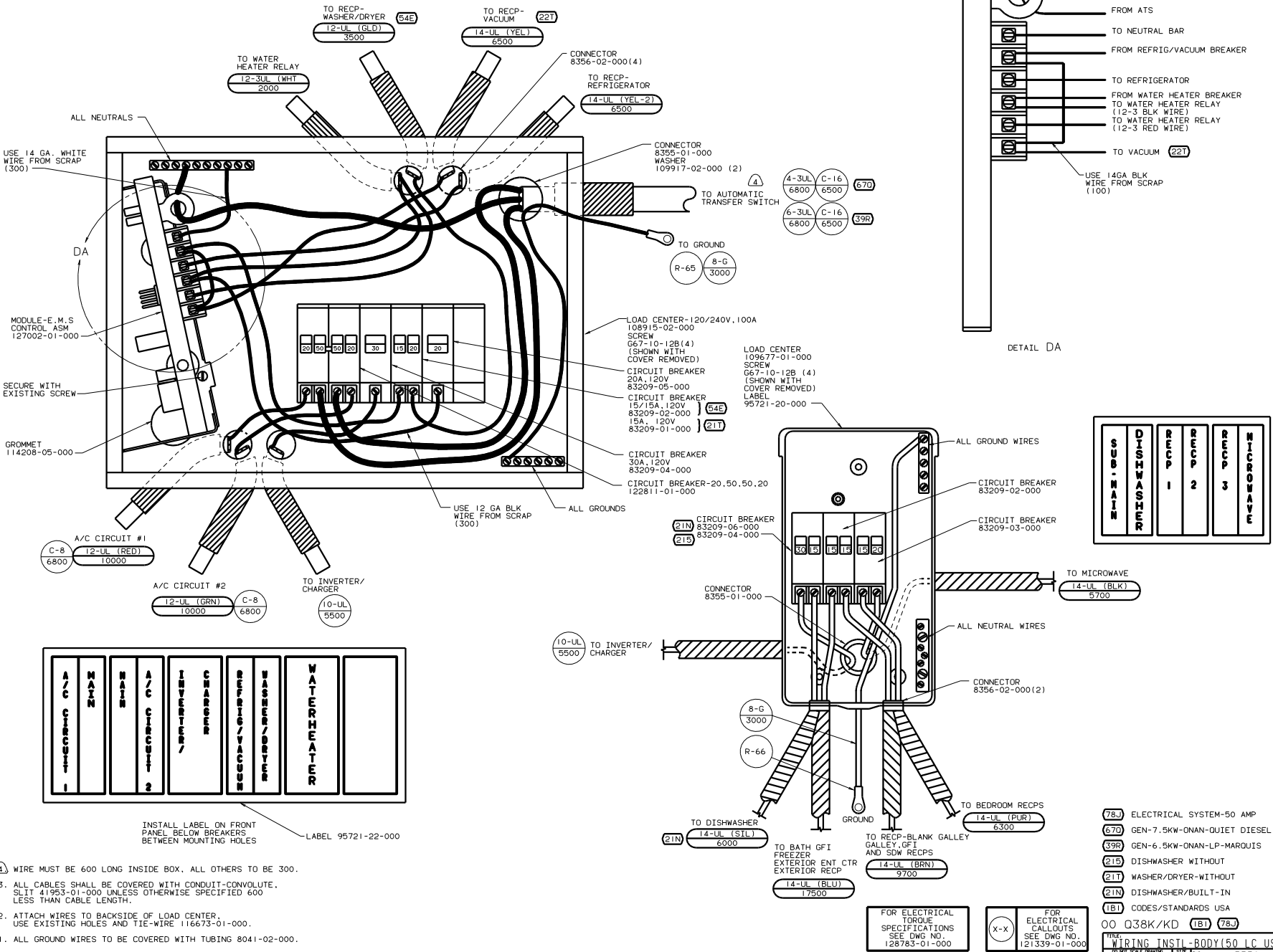
- ⑦ SEE SHT 1 FOR ADDITIONAL INFORMATION.
- ⑥ WIRE ROUTED IN SIDEWALL.
- ⑤ WIRE ROUTED THRU SIDEWALL.
- 4. SEE WIRING DIAGRAM-BODY FOR ADDITIONAL INFORMATION.
- 3. ALL GROUND WIRES ARE TO BE COVERED WITH TUBING 8041-02-000.
- 2. ALL WIRES ARE TO BE CLAMPED WITH CLAMP 10497-05-000 WITHIN 200 OF OUTLET BOXES AND SPLICES. USE SCREW G67-10-12B OR G39-10-12B.
- 1. ALL WIRE TO BE CLAMPED WITH CLAMP 10495-01-000 OR CLIP 80734-02-000 EVERY 600. USE SCREW G67-10-12B UNLESS OTHERWISE SPECIFIED.

- (79W) REFRIGERATOR-4 DOOR
- (78-) ELECTRICAL SYSTEM-50 AMP
- (22T) VACUUM SYSTEM-CENTRAL
- (15U) REFRIGERATOR/FRZR W/ICEMAKER
- (1B1) CODES/STANDARDS USA

FOR ELECTRICAL TORQUE SPECIFICATIONS SEE DWG NO. 128783-01-000

FOR ELECTRICAL CALLOUTS SEE DWG NO. 121339-01-000

00 Q38K/KD (1B1)  
 WIRING INSTL-BODY (110R50US)  
 SHEET 3 OF 10  
 133381

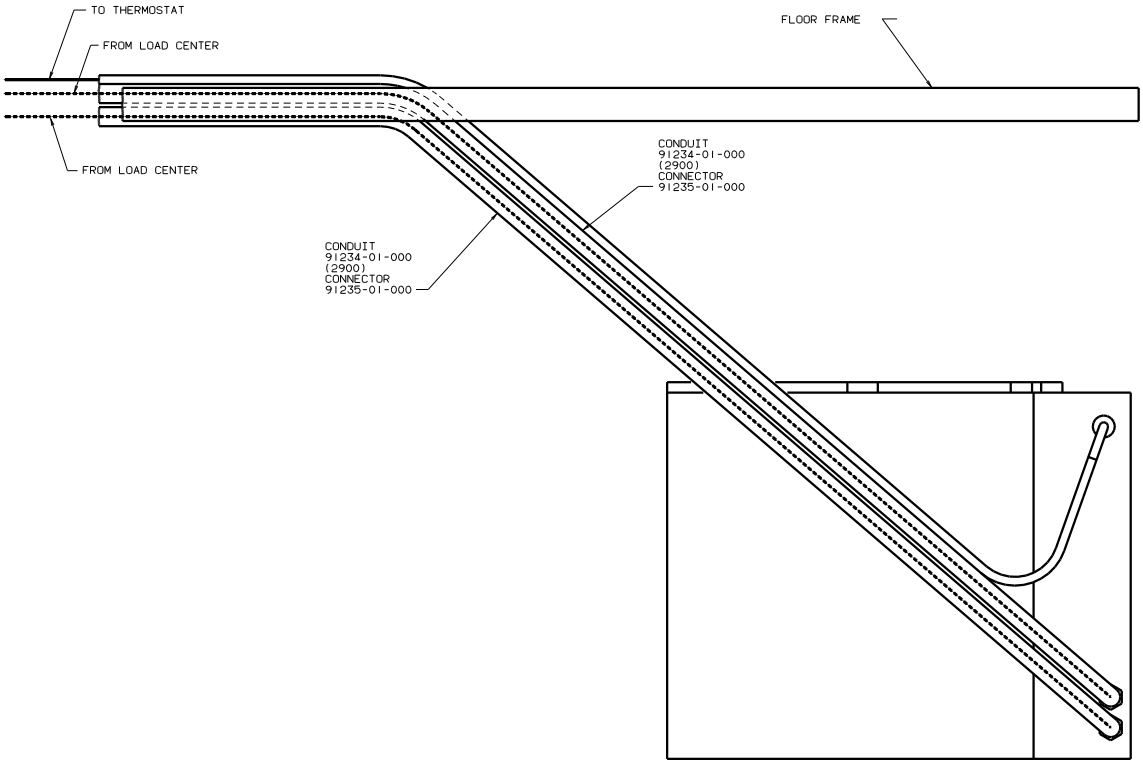


4. WIRE MUST BE 600 LONG INSIDE BOX. ALL OTHERS TO BE 300.
3. ALL CABLES SHALL BE COVERED WITH CONDUIT-CONVOLUTE. SLIT 41953-01-000 UNLESS OTHERWISE SPECIFIED 600 LESS THAN CABLE LENGTH.
2. ATTACH WIRES TO BACKSIDE OF LOAD CENTER. USE EXISTING HOLES AND TIE-WIRE 116673-01-000.
1. ALL GROUND WIRES TO BE COVERED WITH TUBING 8041-02-000.

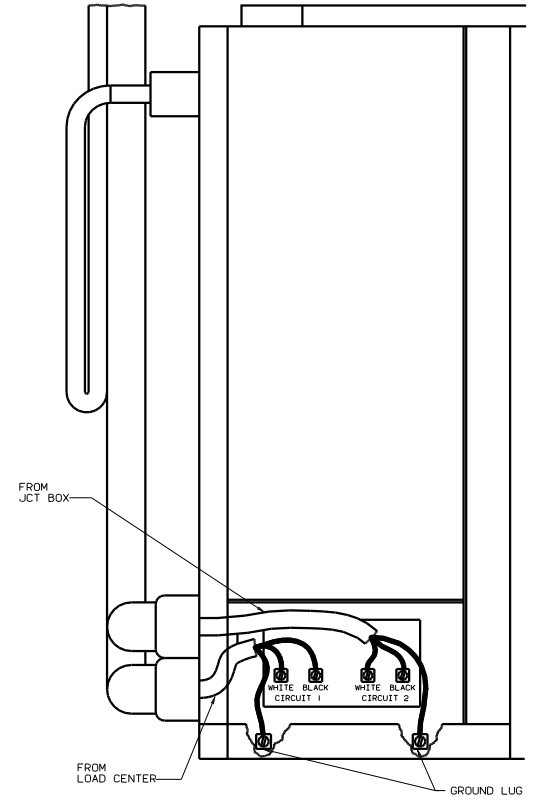
FOR ELECTRICAL TORQUE SPECIFICATIONS SEE DWG NO. 128783-01-000

FOR ELECTRICAL CALLOUTS SEE DWG NO. 121339-01-000

- (78J) ELECTRICAL SYSTEM-50 AMP
- (670) GEN-7.5KW-ONAN-QUIET DIESEL
- (39R) GEN-6.5KW-ONAN-LP-MARQUIS
- (215) DISHWASHER WITHOUT
- (21T) WASHER/DRYER-WITHOUT
- (21N) DISHWASHER/BUILT-IN
- (1B1) CODES/STANDARDS USA
- 00 Q38K/KD (1B1) (78J)



VIEW EA-EA



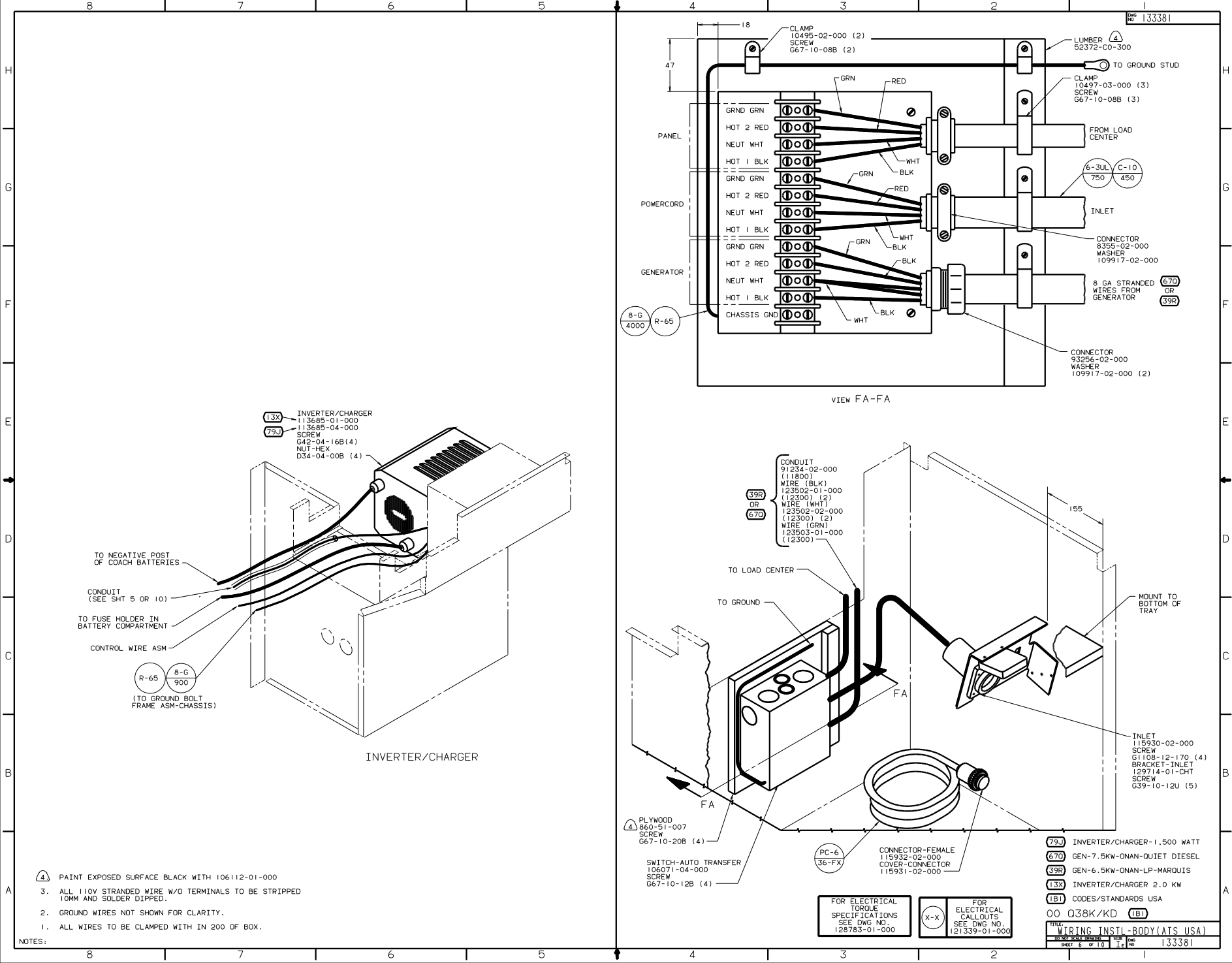
FOR ELECTRICAL TORQUE SPECIFICATIONS SEE DWG NO. 128783-01-000

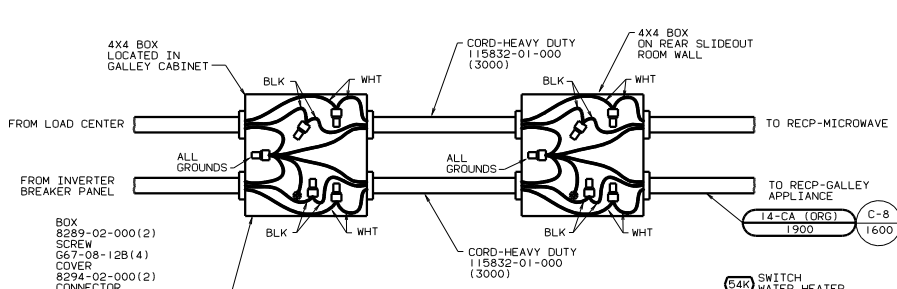
(X-X)

FOR ELECTRICAL CALLOUTS SEE DWG NO. 121339-01-000

(265) CODES/STANDARDS-CSA/CMVSS  
 (1B1) CODES/STANDARDS USA  
 00 Q38K/KD (1B1) (265)

FILE: WIRING INSTL-BODY(CNTRL A/C)  
 SHEET 5 OF 10





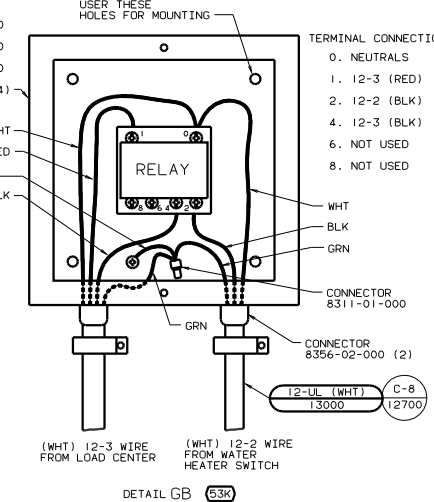
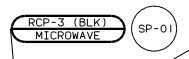
- BOX 8289-02-000(2)
- SCREW G67-08-12B(4)
- COVER 8294-02-000(2)
- CONNECTOR 8356-01-000(8)
- WIRE 8019-01-000(2) (150)
- TERMINAL 8328-01-000(2)
- CONNECTOR 8313-01-000(8)
- 8314-01-000(2)
- SCREW-GROUND, GREEN 103291-01-000(2)

- TV-19" COLOR W/REMOTE 124075-04-000
- SWITCH ENGINE HEATER 84420-03-000 LABEL 83588-02-000
- LOAD CENTER (SEE SHT 9)
- INVERTER BREAKER PANEL (SEE SHT 10)
- 42B RCP-B DET-HD BDRM WALL
- 10W RCP-2 (BRN) TV BDRM LH
- 54E RCP-1 (GLD) WASHER/DRY

- 26K RCP-2 (BRN) BDRM LH RR
- 26L OR 25E RCP-2 (BRN) BDRM LH RR
- 54K SWITCH WATER HEATER 84420-03-000 LABEL 83588-01-000
- SF1-1 CA (BRN) GALLEY
- 49X WTR HTR-10GAL/ELECTRIC/LPGAS
- 42B RCP-B DET-HC BEDROOM
- 54E WATER HEATER RELAY BOX (SEE DETAIL GB)

- WIRING ROUTE BELOW FLOOR IN THIS AREA
- 49X BED-QUEEN BACKWALL
- WATER HEATER RELAY BOX (SEE DETAIL GB)
- 49X BED-QUEEN - BACKWALL
- 42B RCP-B DET-HC BEDROOM
- 54E WATER HEATER RELAY BOX (SEE DETAIL GB)

- TO RECP-BDRM RH RR (BRN) FROM RECP-BDRM LH RR
- 49X BED-QUEEN BACKWALL
- TO RECP-BDRM RH RR (BRN) FROM RECP-BDRM LH RR
- 49X BED-QUEEN BACKWALL

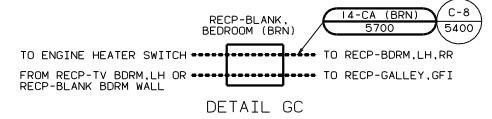


- 8 WIRE ROUTED IN ROOF.
- 7 ROUTE WIRE THRU FLOOR.
- 6 WIRE IN SIDEWALL.
- 5 WIRE ROUTED THRU SIDEWALL.

- 4. SEE WIRING DIAGRAM-BODY FOR ADDITIONAL INFORMATION.
- 3. ALL GROUND WIRES ARE TO BE COVERED WITH TUBING 8041-02-000.
- 2. ALL WIRES ARE TO BE CLAMPED WITH CLAMP 10497-05-000 WITHIN 200 OF OUTLET BOXES AND SPLICES, USE SCREW G67-10-12B OR 39-10-12B.
- 1. ALL WIRE TO BE CLAMPED WITH CLAMP 10495-01-000 OR CLIP 80734-02-000 EVERY 600, USE SCREW G67-10-12B UNLESS OTHERWISE SPECIFIED.

TO RECP-BDRM RH RR (BRN) FROM RECP-BDRM LH RR

49X BED-QUEEN BACKWALL



FOR ELECTRICAL TORQUE SPECIFICATIONS SEE DWG NO. 123783-01-000

FOR ELECTRICAL CALLOUTS SEE DWG NO. 121339-01-000

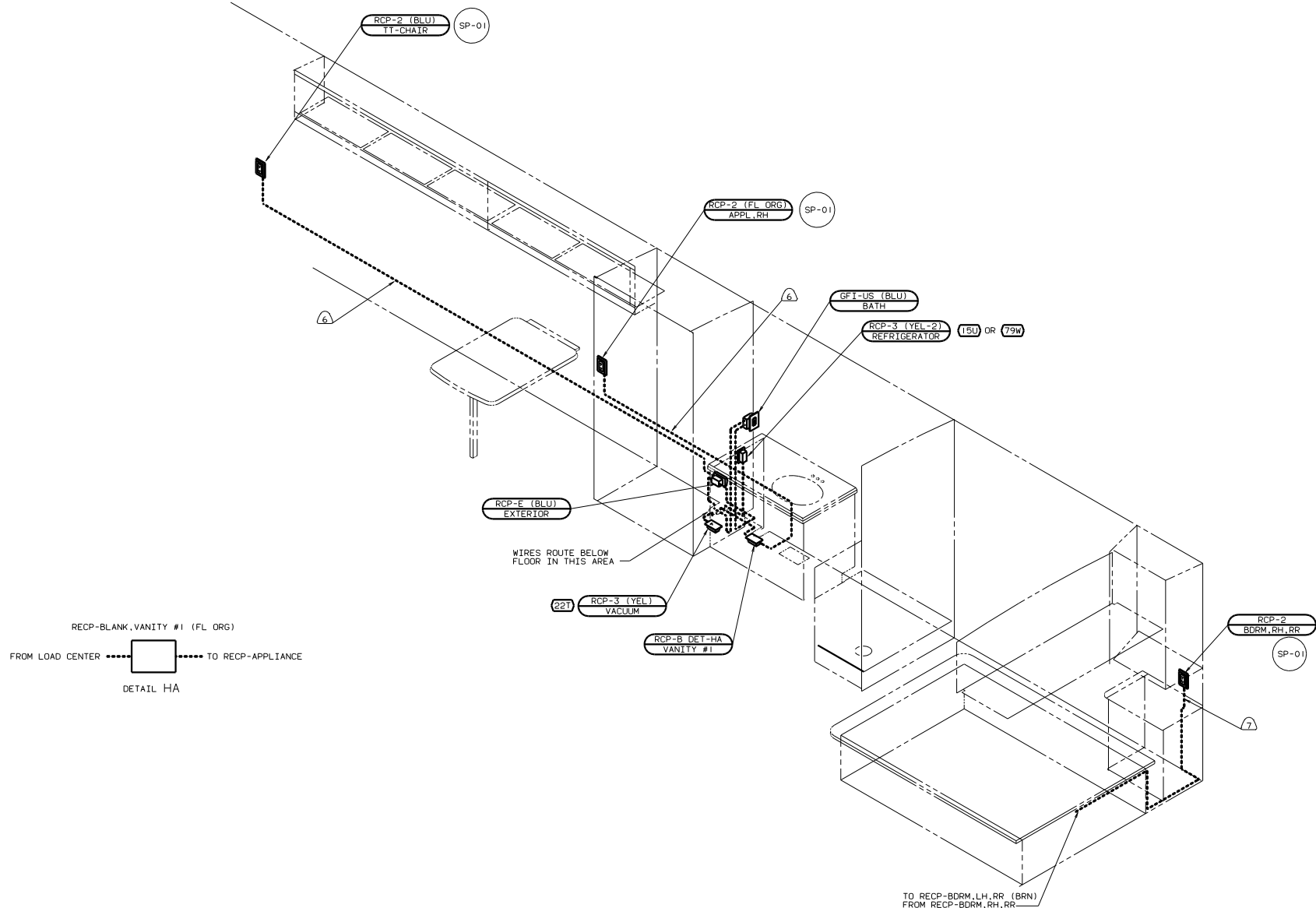
- 26L REAR STEREO SYSTEM W/CASSETTE
- 26K REAR STEREO SYSTEM WITHOUT
- 25E REAR STEREO SYSTEM W/CD
- 54E WASHER/DRYER
- 53K WTR HTR-10GAL/ELECTRIC/LPGAS
- 49X BED-QUEEN - BACKWALL
- 42B TV-REAR-WITHOUT
- 26S CODES/STANDARDS-CSA/CMVSS
- 10W TV-REAR

00 Q38K/KD 26S

WIRING INSTL-BODY (110150CSA)

133381





- 6) WIRE IN SIDEWALL.
- 5) ROUTE WIRE THRU SIDEWALL.
- 4. SEE WIRING DIAGRAM-BODY FOR ADDITIONAL INFORMATION.
- 3. ALL GROUND WIRES ARE TO BE COVERED WITH TUBING 8041-02-000.
- 2. ALL WIRES ARE TO BE CLAMPED WITH CLAMP 10497-05-000 WITHIN 200 OF OUTLET BOXES AND SPLICES. USE SCREW G67-10-12B OR 39-10-12B.
- 1. ALL WIRE TO BE CLAMPED WITH CLAMP 10495-01-000 OR CLIP 80734-02-000 EVERY 600. USE SCREW G67-10-12B UNLESS OTHERWISE SPECIFIED.

NOTES:

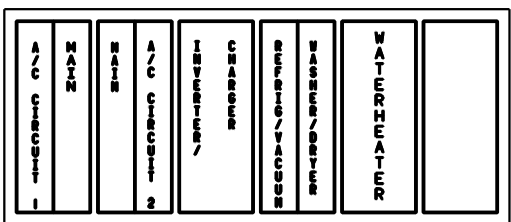
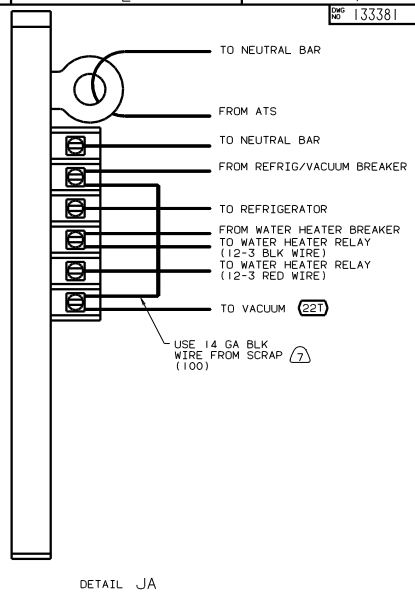
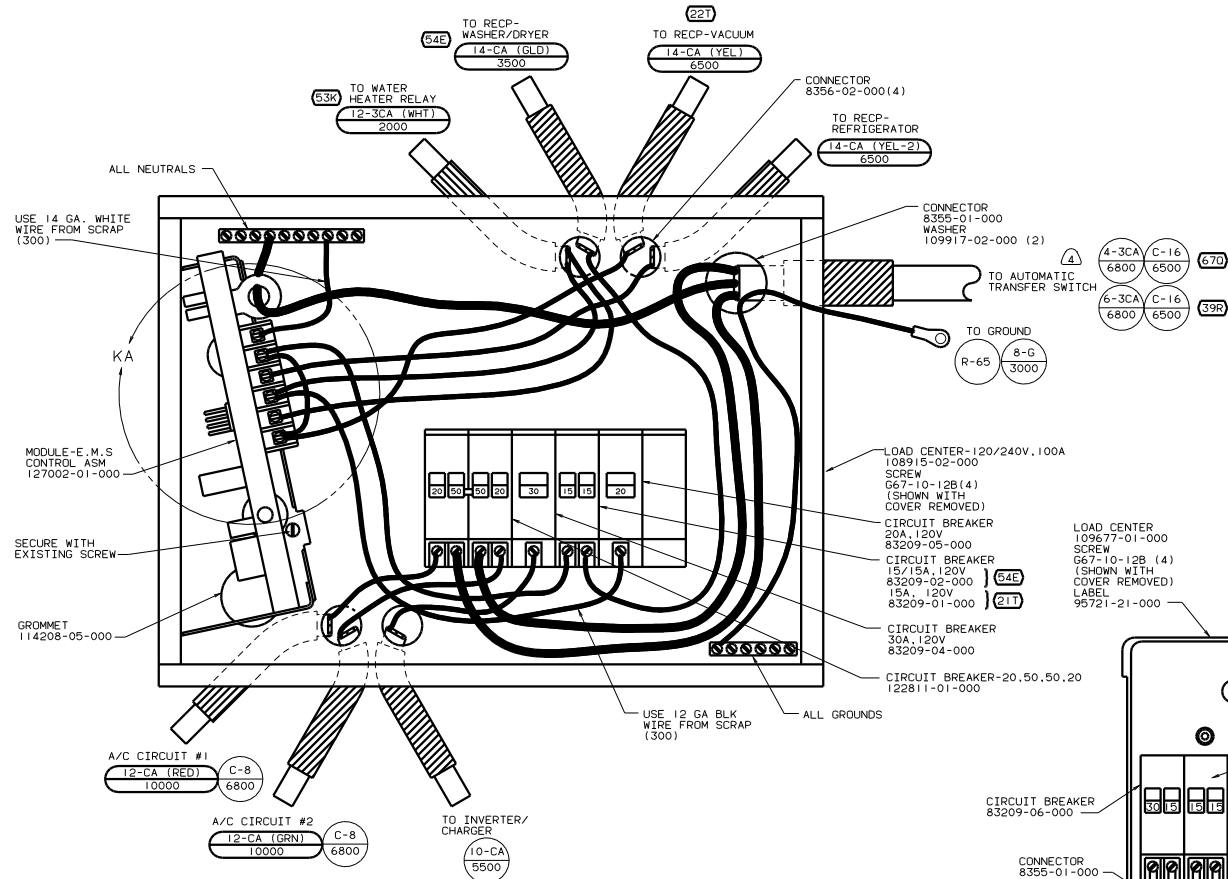
FOR ELECTRICAL TORQUE SPECIFICATIONS SEE DWG NO. 128783-01-000



FOR ELECTRICAL CALLOUTS SEE DWG NO. 121339-01-000

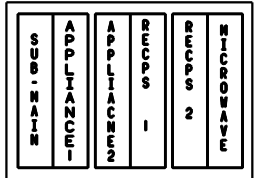
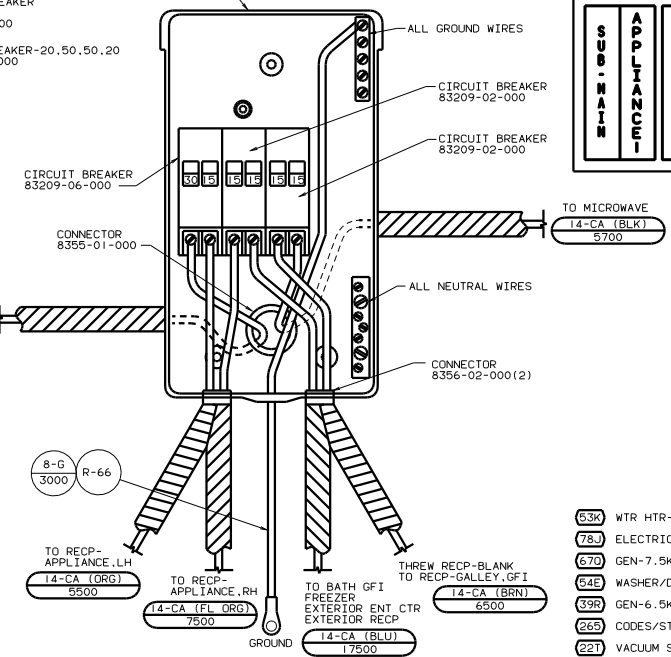
- 79W REFRIGERATOR-4 DOOR
- 78- ELECTRICAL SYSTEM-50 AMP
- 265 CODES/STANDARDS-CSA/CMVSS
- 221 VACUUM SYSTEM-CENTRAL
- 15U REFRIGERATOR/FRZR W/ICEMAKER

00 Q38K/KD  
 TITLE: WIRING INSTL-BODY (110R50CSA)  
 SHEET 8 OF 10  
 133381



INSTALL LABEL ON FRONT PANEL BELOW BREAKERS BETWEEN MOUNTING HOLES

LABEL 95721-22-000



- WIRE MUST BE 600 LONG INSIDE BOX. ALL OTHERS TO BE 300.
- ALL CABLES SHALL BE COVERED WITH CONDUIT-CONVOLUTE. SLIT 41953-01-000 UNLESS OTHERWISE SPECIFIED. 600 LESS THAN CABLE LENGTH.
- ATTACH WIRES TO BACKSIDE OF LOAD CENTER. USE EXISTING HOLES AND TIE-WIRE 116673-01-000.
- ALL GROUND WIRES TO BE COVERED WITH TUBING 8041-02-000.

FOR ELECTRICAL TORQUE SPECIFICATIONS SEE DWG NO. 128783-01-000

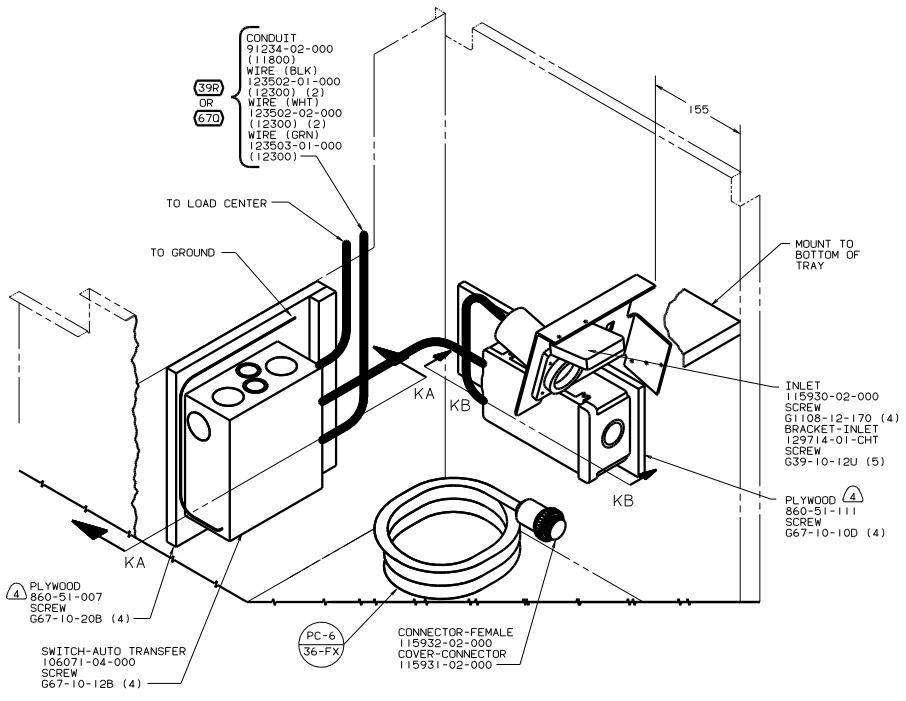
FOR ELECTRICAL CALLOUTS SEE DWG NO. 121339-01-000

- 63K WTR HTR-10GAL/ELECTRIC/LPGAS
- 78J ELECTRICAL SYSTEM-50 AMP
- 670 GEN-7.5KW-ONAN-QUIET DIESEL
- 64E WASHER/DRYER
- 39R GEN-6.5KW-ONAN-LP-MARQUIS
- 26S CODES/STANDARDS-CSA/CMVSS
- 21T VACUUM SYSTEM-CENTRAL
- 21T WASHER/DRYER-WITHOUT

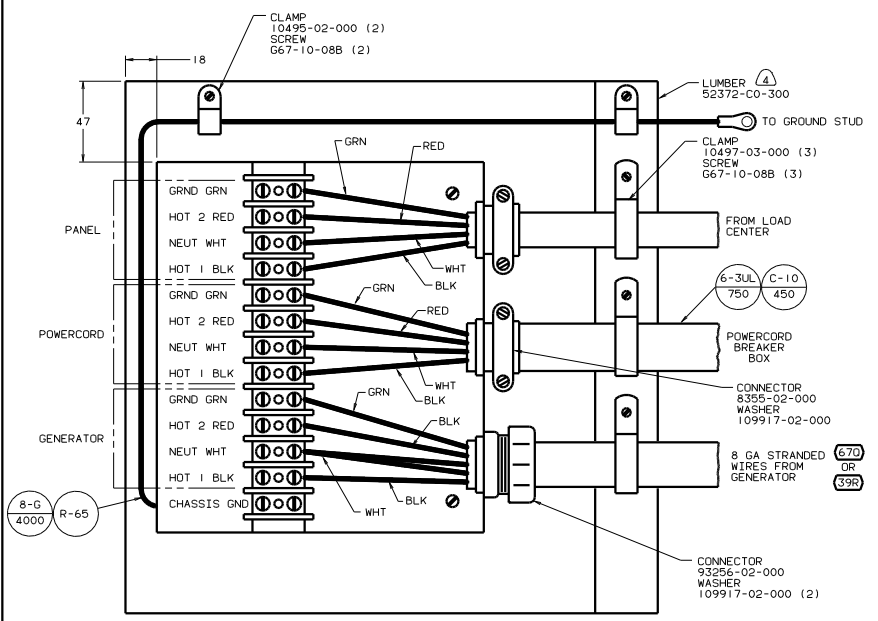
00 Q38K/KD

WIRING INSTL-BODY (50 LC US)

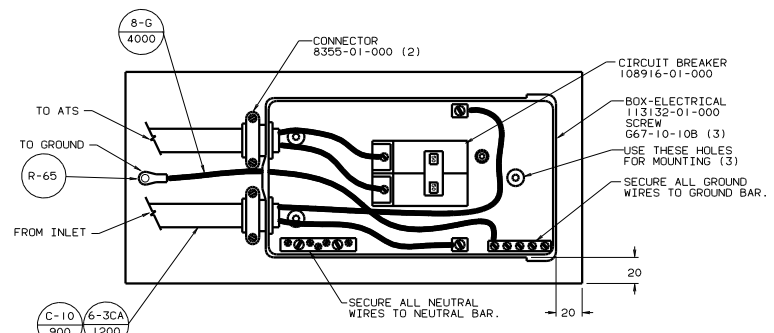
133381



- 4 PAINT EXPOSED SURFACE BLACK WITH 106112-01-000
- ALL 110V STRANDED WIRE W/O TERMINALS TO BE STRIPPED 10MM AND SOLDER DIPPED.
  - GROUND WIRES NOT SHOWN FOR CLARITY.
  - ALL WIRES TO BE CLAMPED WITH IN 200 OF BOX.
- NOTES:



VIEW KA-KA



VIEW KB-KB (WITH COVER REMOVED)

FOR ELECTRICAL TORQUE SPECIFICATIONS SEE DWG NO. 128783-01-000

(X-X)

FOR ELECTRICAL CALLOUTS SEE DWG NO. 121339-01-000

67D GEN-7.5KW-ONAN-QUIET DIESEL

39R GEN-6.5KW-ONAN-LP-MARQUIS

265 CODES/STANDARDS-CSA/CMVSS

00 Q38K/KD 265

TITLE: WIRING INSTL - BODY (ATS)

NO. OF SHEETS: 2 SHEET 10 OF 10

DWG NO. 133381