



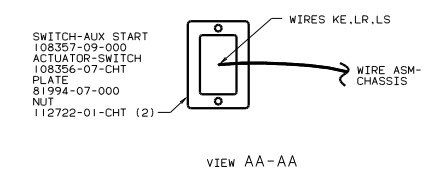
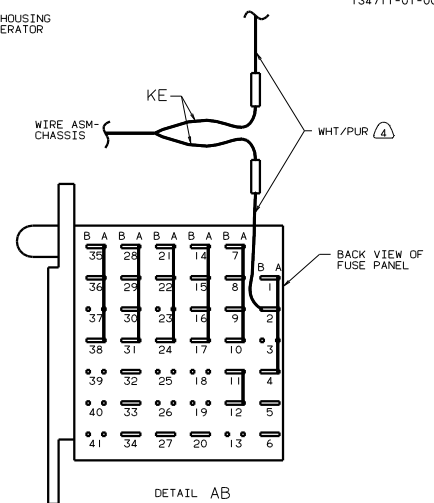
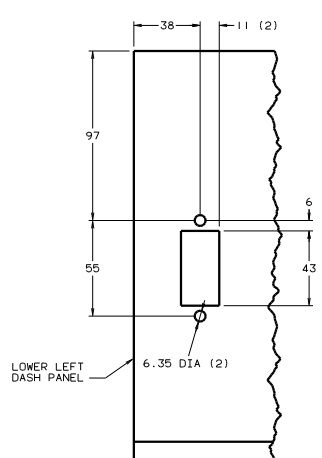
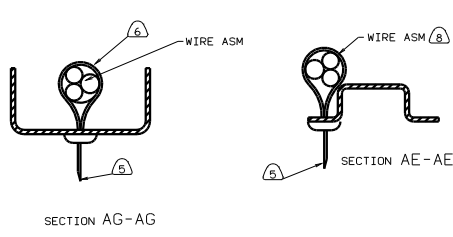
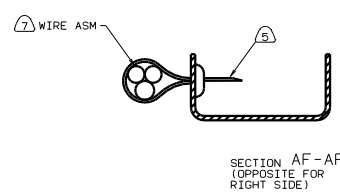
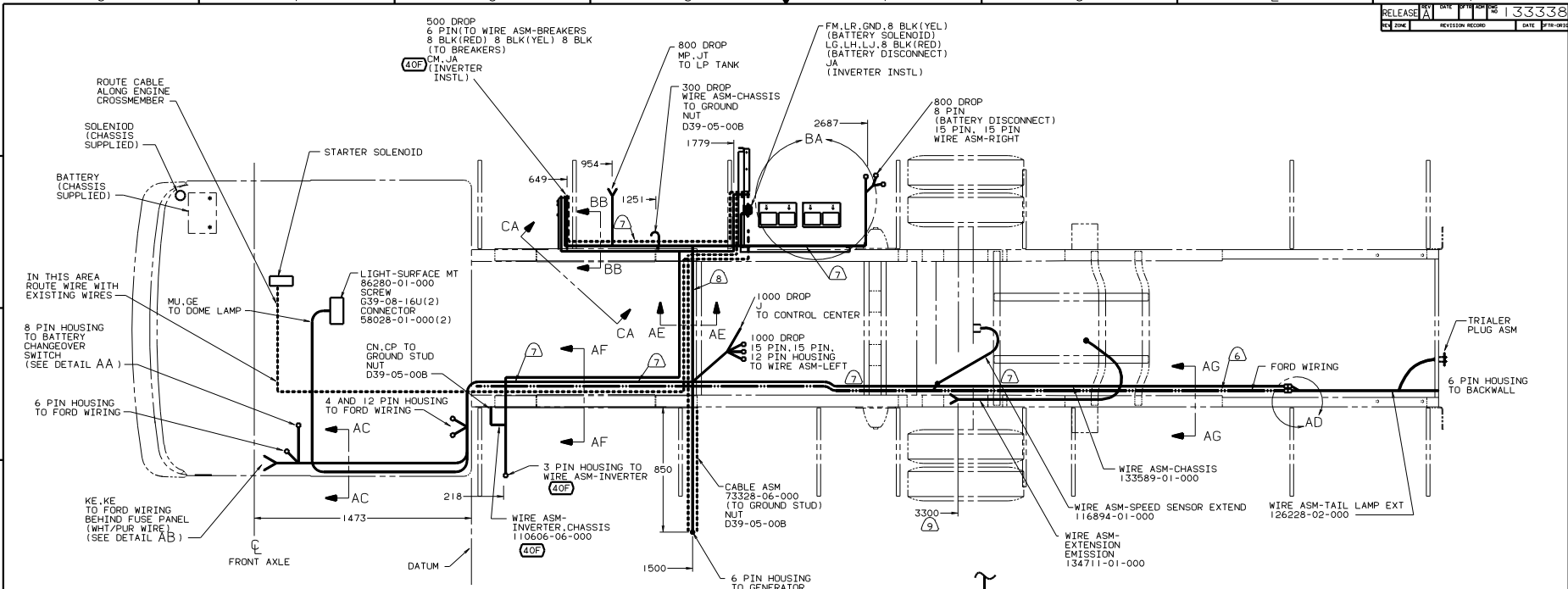
DANGER

Danger of electrical shock, burns or death. Always remove all power sources before attempting any repair, service or diagnostic work. Power can be present from shore power, generator, inverter or battery. All power sources must be disabled and secured before performing any service.

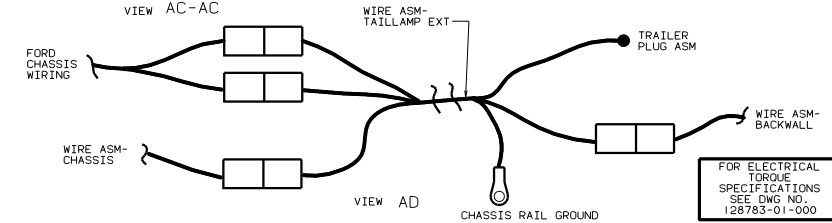


CAUTION

If you lack the skills, tools or equipment to perform diagnostic or repair work leave such work to an authorized Winnebago Industries dealer or other qualified shop.



- ⑨ SPLIT AND EXTEND THE FORD WIRE ASM TO THE EMISSION SENSOR IN THE FUEL TANK.
 - ⑧ WIRES TO BE TIED TO CROSS MEMBER USING EXISTING HOLES.
 - ⑦ WIRES TO BE TIED ON TOP OF RAIL USING EXISTING HOLES.
 - ⑥ WIRES TO BE TIED INSIDE RAIL USING EXISTING HOLES.
 - ⑤ CUT OF EXCESS END OF WIRE TIE.
 - ④ CUT WIRE AND RECONNECT AS SHOWN.
3. USE WIRE TIES 8343-01-000 AND 116673-01-000 APPROXIMATELY 600MM ON CENTER UNLESS OTHERWISE SPECIFIED.
2. SECURE CONDUIT 41953-01-000 OVER ALL WIRE IN CONTACT WITH SHARP EDGES.
1. LEGEND: — FORD WIRING — WINNEBAGO WIRING CABLE.



FOR ELECTRICAL TORQUE SPECIFICATIONS SEE DWG NO. 128783-01-000

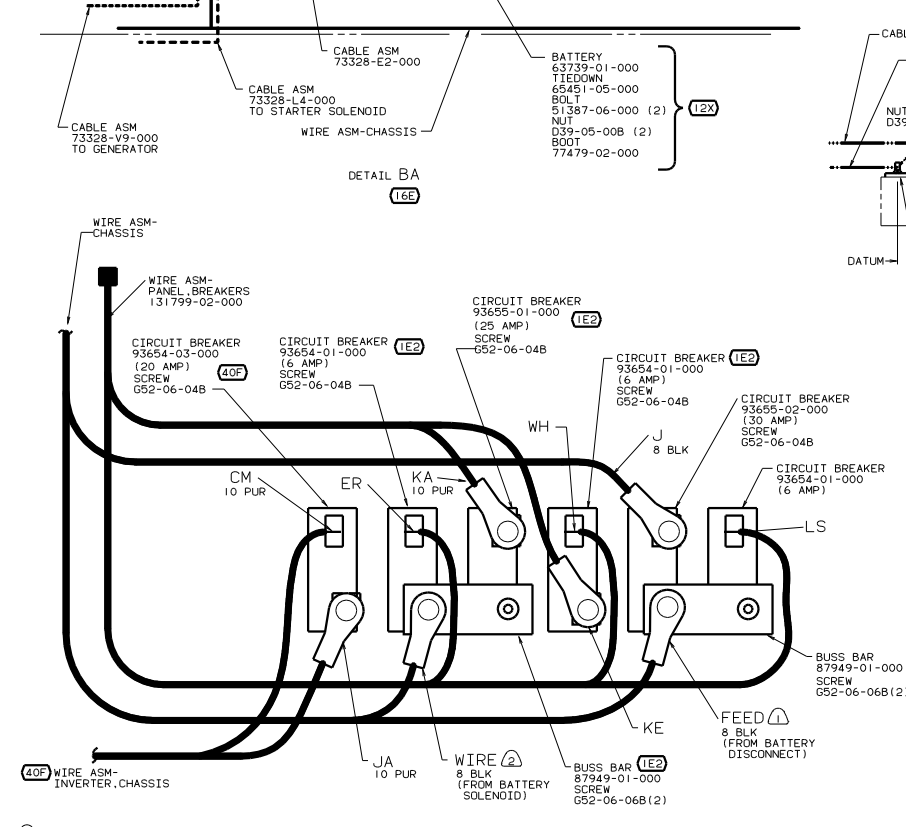
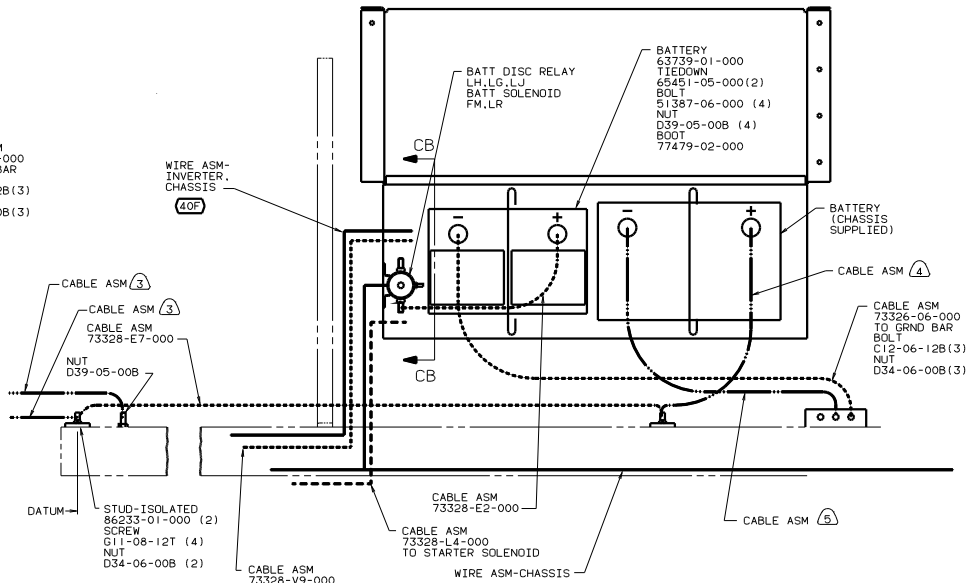
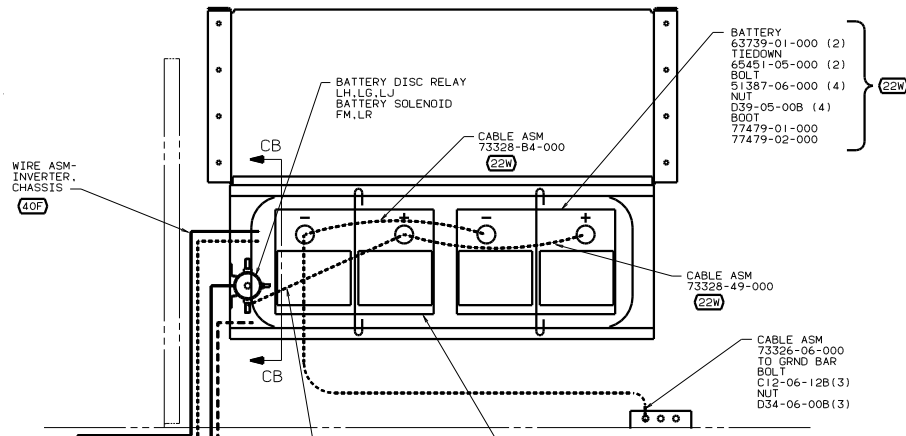
②65 CODES/STANDARDS-CSA/CMVSS
 ①81 CODES/STANDARDS USA
 ⑤20 FORD CHASSIS-DIESEL
 ④0F INVERTER-DC/AC 130W
 ①6E FORD CHASSIS 14.050# GWWR

①6E ⑤20

LANO# L9C.329 TITLE: WIRING INSTL-CHASSIS
 00 329N

DATE	UNAPPROVED TOLERANCES ARE:	MATERIAL
DATE	WHOLE DIM (1:1)	
DATE	ONE-PLACE (1:1)	
DATE	TWO-PLACE (1:1)	
DATE	ANGLE	
DATE	THRU HOLE	
DATE	PROTECTOR	

REF: 130724 133338



- (5) TRIM CABLE TO 600. ADD TERMINAL 8348-01-000
- (4) TRIM CABLE TO 450. ADD TERMINAL 8348-01-000.
- (3) ADD TERMINAL 8348-01-000.
- (2) LEAD IS MARKED WITH YELLOW TAPE.
- (1) LEAD IS MARKED WITH RED TAPE.

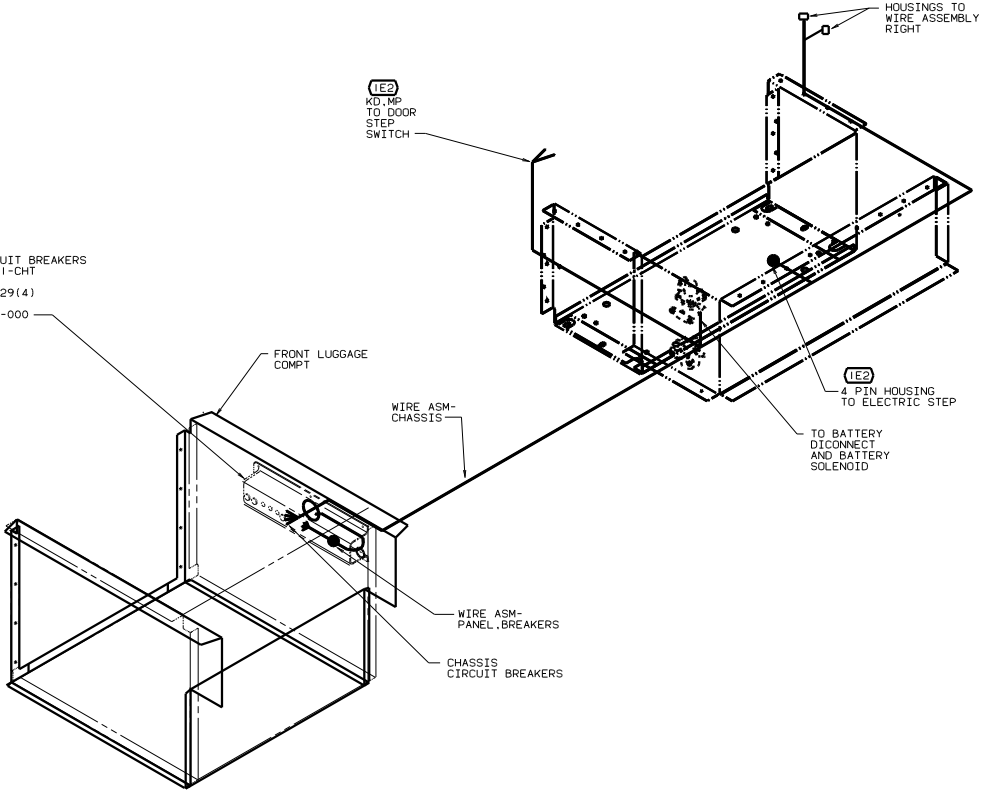
FOR ELECTRICAL TORQUE SPECIFICATIONS SEE DWS NO. 128783-01-000

- (265) CODES/STANDARDS-CSA/CMVSS
- (1B1) CODES/STANDARDS USA
- (52C) FORD CHASSIS-DIESEL
- (40F) INVERTER-DC/AC 130W
- (22W) BATTERY-TWO
- (1E2) ENTRANCE STEP-ELECTRIC
- (16E) FORD CHASSIS 14,050# GVWR
- (12X) BATTERY-ONE

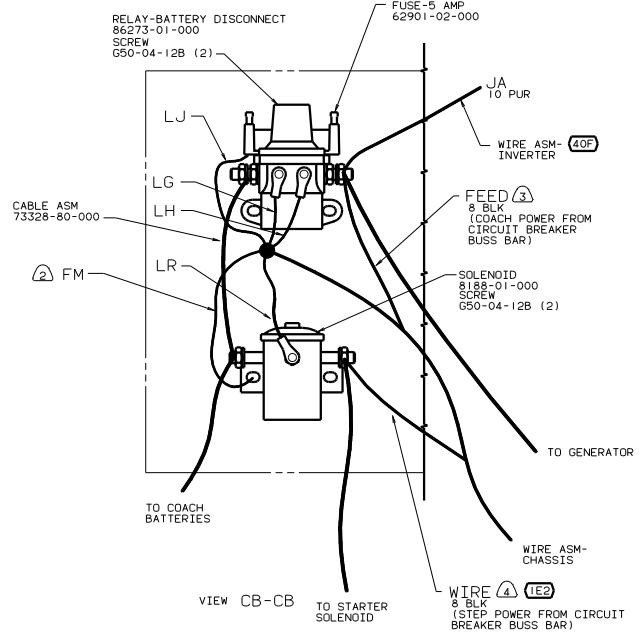
00 329N (16E) (52C)

TITLE		WIRING INSTL-CHASSIS	
NO. OF SHEETS	2 OF 3	REV	1
DATE		133338	

BOX-CIRCUIT BREAKERS
107165-01-CHT
SCREW
G39-10-129(4)
LABEL
93236-08-000



DETAIL CA-CA



- (26S) CODES/STANDARDS-CSA/CMVSS
- (1B1) CODES/STANDARDS USA
- (52C) FORD CHASSIS-DIESEL
- (40F) INVERTER-DC/AC 130W
- (IE2) ENTRANCE STEP-ELECTRIC
- (16E) FORD CHASSIS 14.050# GVWR

- (4) LEAD IS MARKED WITH YELLOW TAPE.
- (3) LEAD IS MARKED WITH RED TAPE.
- (2) SECURE WITH SOLENOID MOUNTING SCREW.
- (1) LOCATE BOX VERTICALLY BY CENTERING ON HOLE IN COMPT.

FOR ELECTRICAL TORQUE SPECIFICATIONS SEE DWG NO. 128783-01-000

00 329N (16E) (52C)

TITLE: WIRING INSTL-CHASSIS

30 DAY SCALE DRAWING SHEET 3 OF 3

133338