



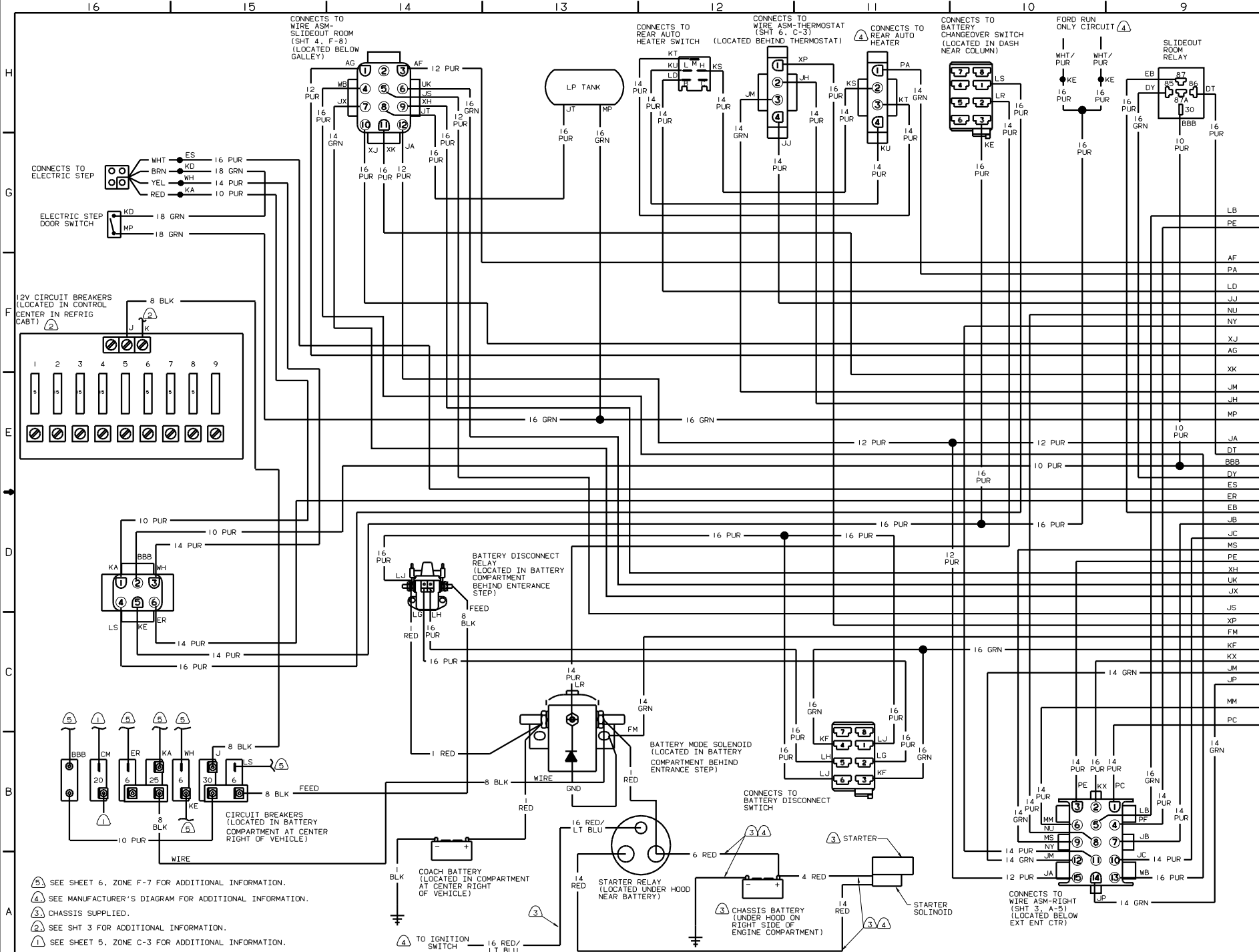
DANGER

Danger of electrical shock, burns or death. Always remove all power sources before attempting any repair, service or diagnostic work. Power can be present from shore power, generator, inverter or battery. All power sources must be disabled and secured before performing any service.

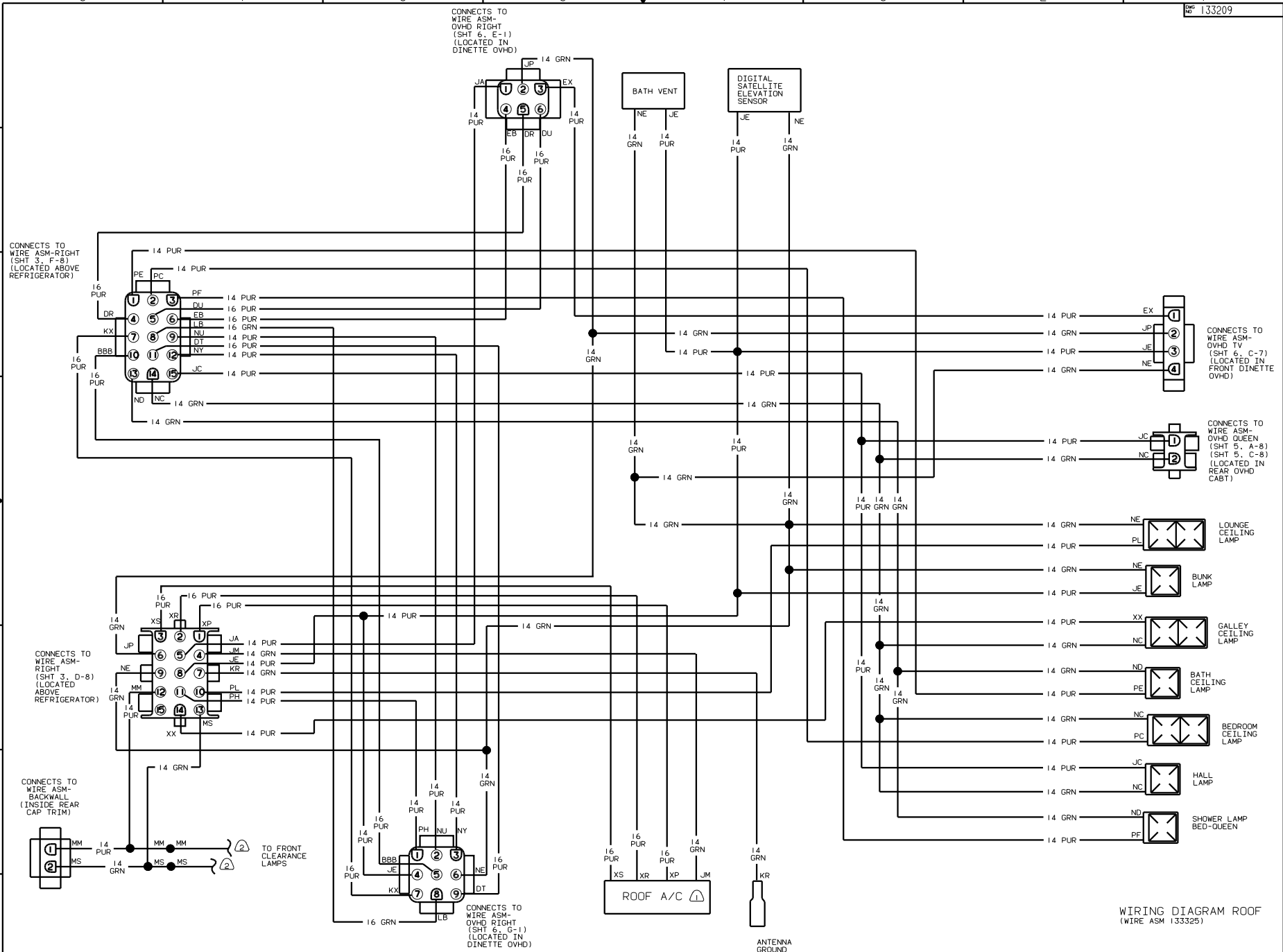


CAUTION

If you lack the skills, tools or equipment to perform diagnostic or repair work leave such work to an authorized Winnebago Industries dealer or other qualified shop.



- NOTES:
- ⑤ SEE SHEET 6, ZONE F-7 FOR ADDITIONAL INFORMATION.
 - ④ SEE MANUFACTURER'S DIAGRAM FOR ADDITIONAL INFORMATION.
 - ③ CHASSIS SUPPLIED.
 - ② SEE SHT 3 FOR ADDITIONAL INFORMATION.
 - ① SEE SHEET 5, ZONE C-3 FOR ADDITIONAL INFORMATION.



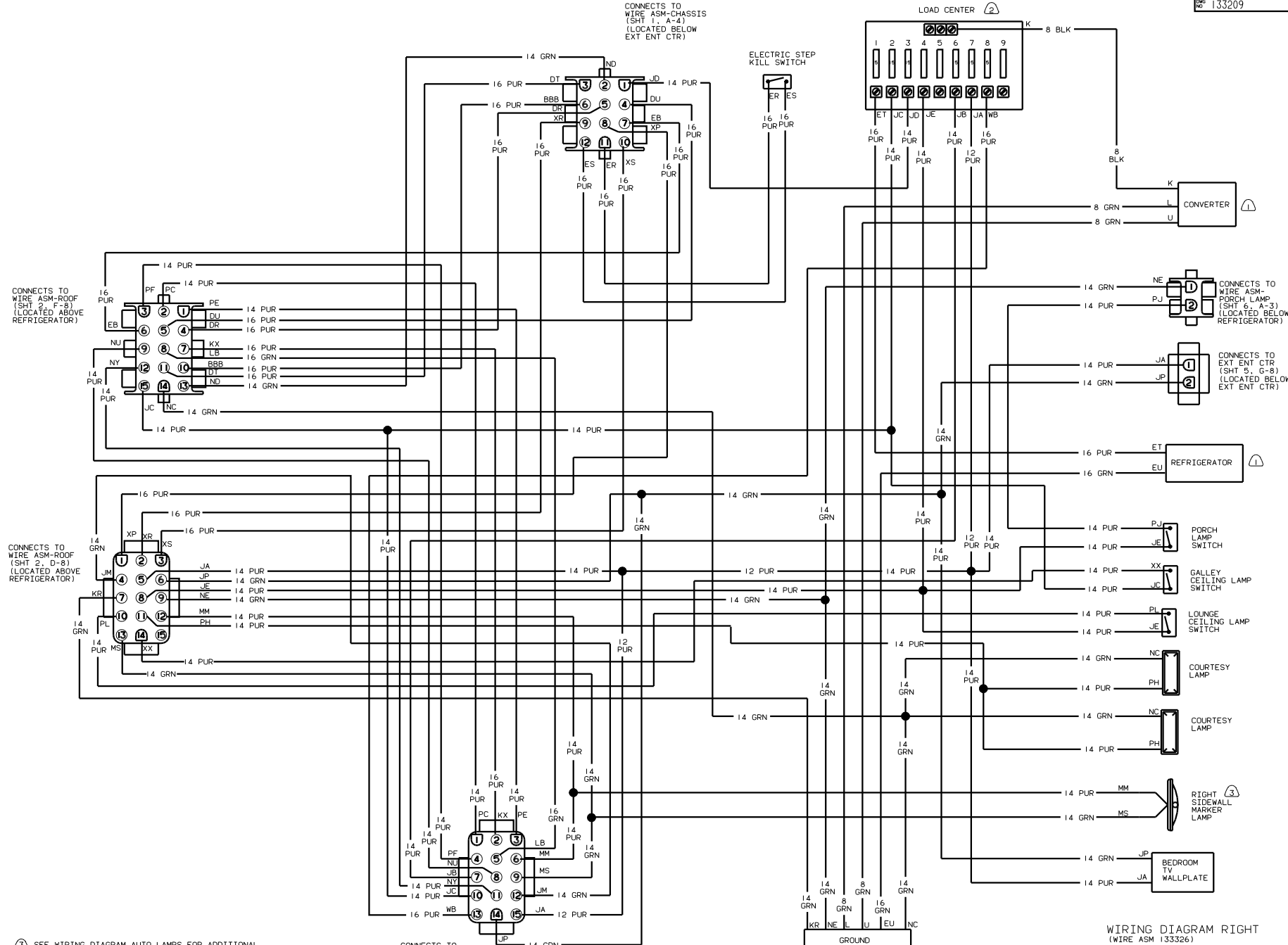
WIRING DIAGRAM ROOF (WIRE ASM 133325)

00 430V

TITLE: WIRING DIAGRAM-BODY_12V	
NO. OF SHEETS: 6	SHEET NO: 2
DATE: 1/6	REV: 1
133209	

- ② SEE WIRING DIAGRAM AUTO LAMPS FOR ADDITIONAL INFORMATION.
- ① SEE MANUFACTURER'S DIAGRAM FOR ADDITIONAL INFORMATION.

NOTES:



WIRING DIAGRAM RIGHT
(WIRE ASM 133326)

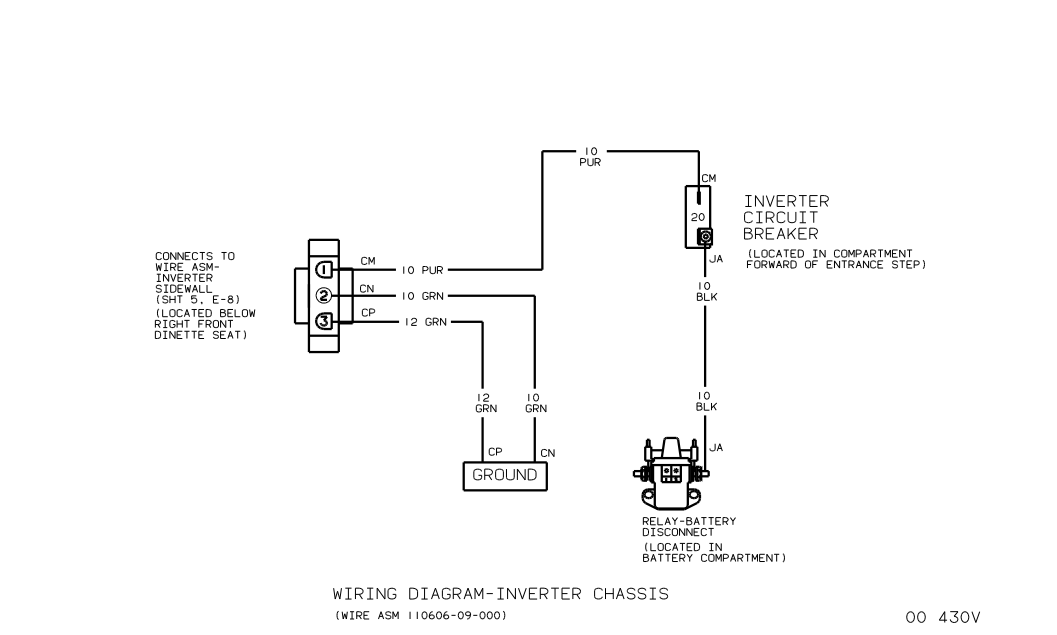
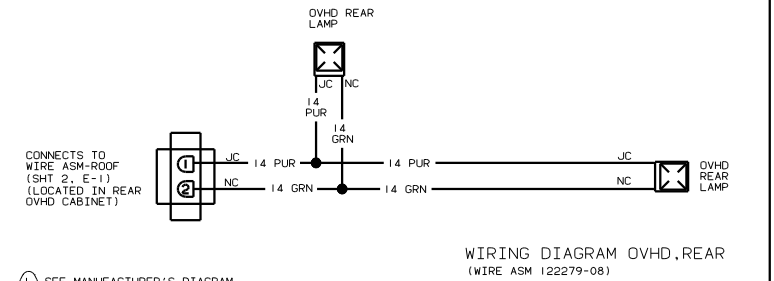
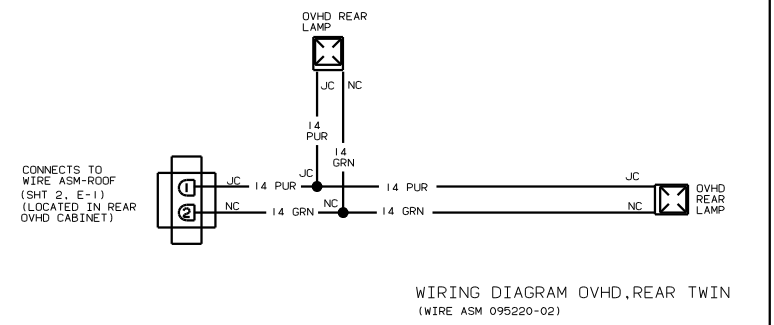
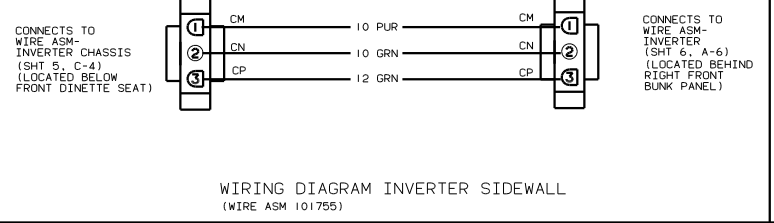
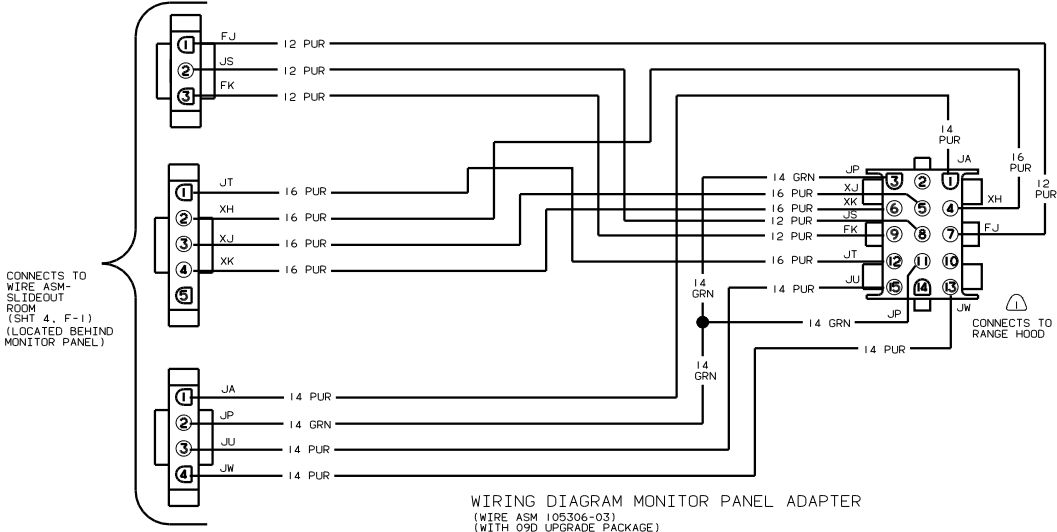
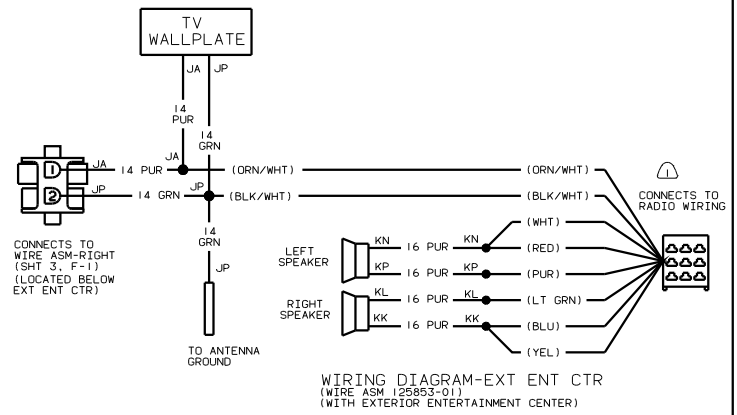
00 430V

TITLE:	WIRING DIAGRAM-BODY_12V
NO. OF SHEETS:	3 OF 6
SHEET NO.:	3
DATE:	11/1/68
DESIGNER:	J.E.H.
CHECKED:	
APPROVED:	

- NOTES:
- ③ SEE WIRING DIAGRAM AUTO LAMPS FOR ADDITIONAL INFORMATION.
 - ② SEE SHT 1 FOR ADDITIONAL INFORMATION.
 - ① SEE MANUFACTURER'S DIAGRAM FOR ADDITIONAL INFORMATION.

CONNECTS TO WIRE ASM-CHASSIS (SHT 1, A-10) (LOCATED BELOW EXT ENT CTR)

(LOCATED BELOW EXT ENT CTR)



NOTES:
SEE MANUFACTURER'S DIAGRAM FOR ADDITIONAL INFORMATION.

