



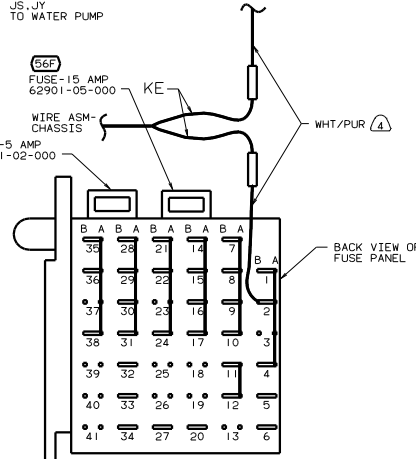
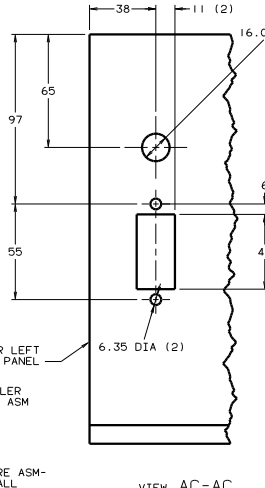
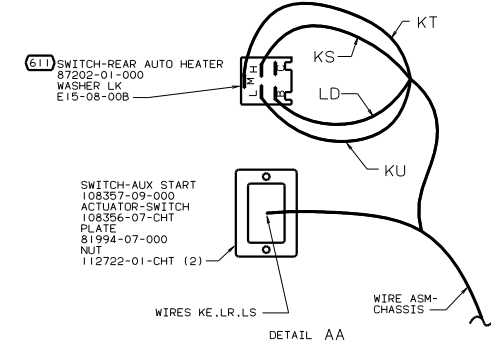
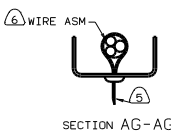
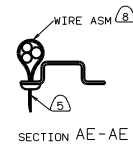
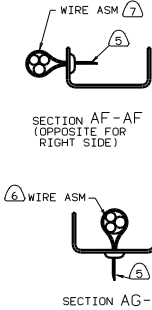
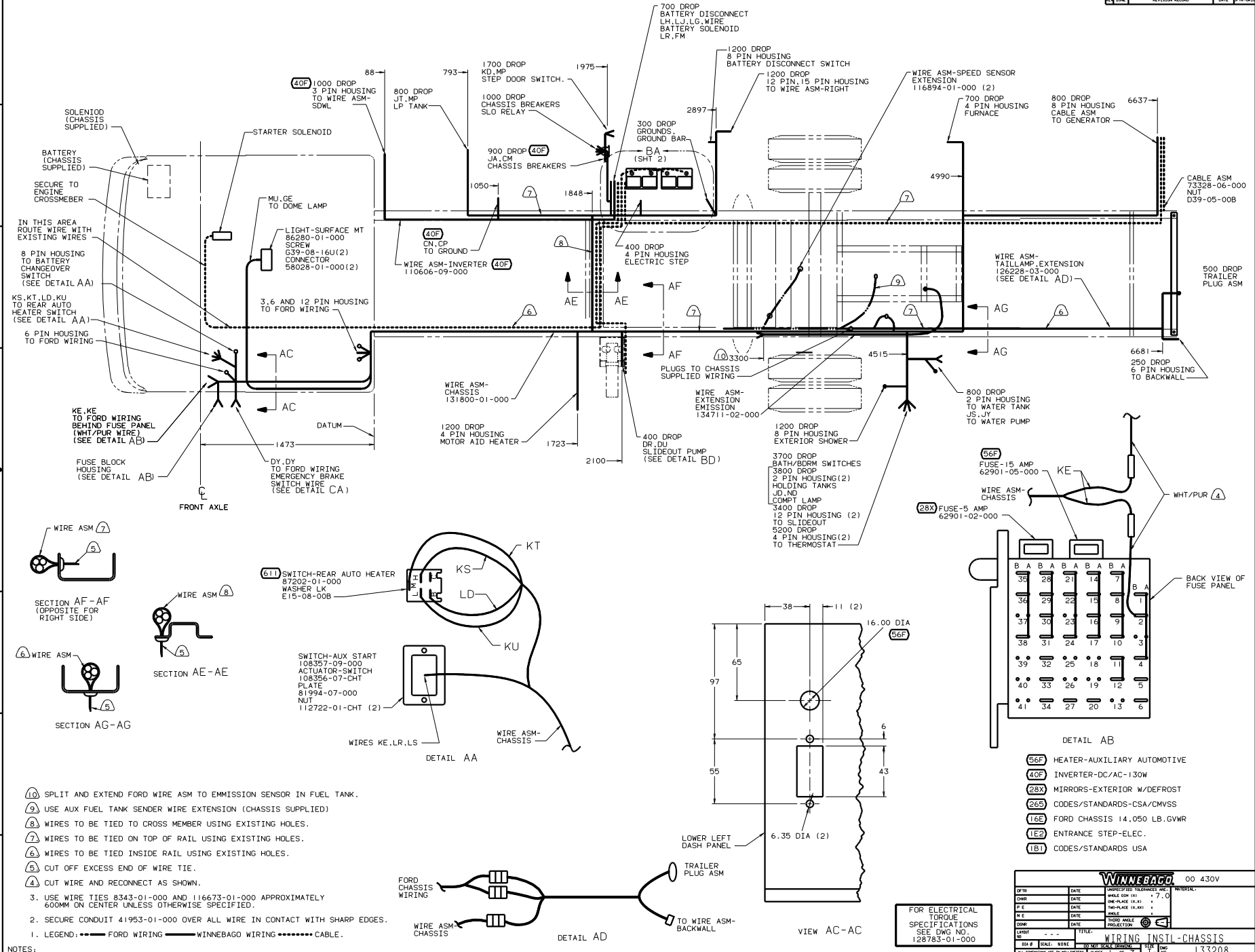
DANGER

Danger of electrical shock, burns or death. Always remove all power sources before attempting any repair, service or diagnostic work. Power can be present from shore power, generator, inverter or battery. All power sources must be disabled and secured before performing any service.



CAUTION

If you lack the skills, tools or equipment to perform diagnostic or repair work leave such work to an authorized Winnebago Industries dealer or other qualified shop.



- DETAIL AB
- (56F) HEATER-AUXILIARY AUTOMOTIVE
 - (40F) INVERTER-DC/AC-130W
 - (28X) MIRRORS-EXTERIOR W/DEFROST
 - (26S) CODES/STANDARDS-CSA/CMVSS
 - (16E) FORD CHASSIS 14.050 LB. GVWR
 - (1E2) ENTRANCE STEP-ELEC.
 - (1B1) CODES/STANDARDS USA

- NOTES:
- (10) SPLIT AND EXTEND FORD WIRE ASM TO EMISSION SENSOR IN FUEL TANK.
 - (2) USE AUX FUEL TANK SENDER WIRE EXTENSION (CHASSIS SUPPLIED)
 - (3) WIRES TO BE TIED TO CROSS MEMBER USING EXISTING HOLES.
 - (7) WIRES TO BE TIED ON TOP OF RAIL USING EXISTING HOLES.
 - (8) WIRES TO BE TIED INSIDE RAIL USING EXISTING HOLES.
 - (9) CUT OFF EXCESS END OF WIRE TIE.
 - (4) CUT WIRE AND RECONNECT AS SHOWN.
 3. USE WIRE TIES 8343-01-000 AND 116673-01-000 APPROXIMATELY 600MM ON CENTER UNLESS OTHERWISE SPECIFIED.
 2. SECURE CONDUIT 41953-01-000 OVER ALL WIRE IN CONTACT WITH SHARP EDGES.
 1. LEGEND: --- FORD WIRING --- WINNEBAGO WIRING CABLE.

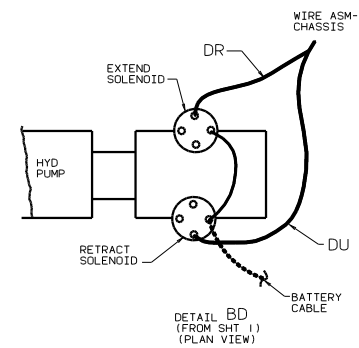
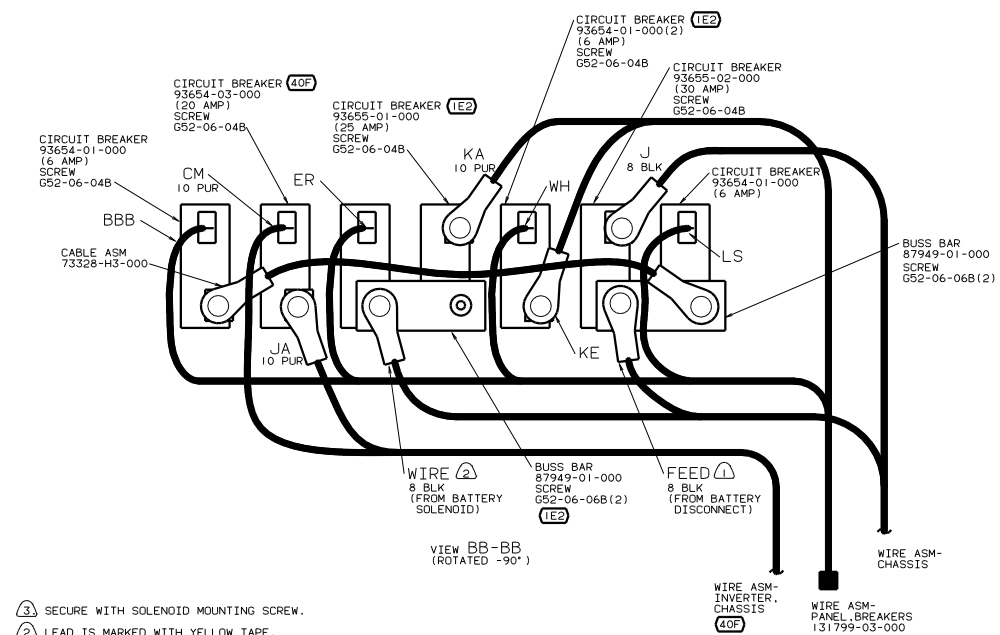
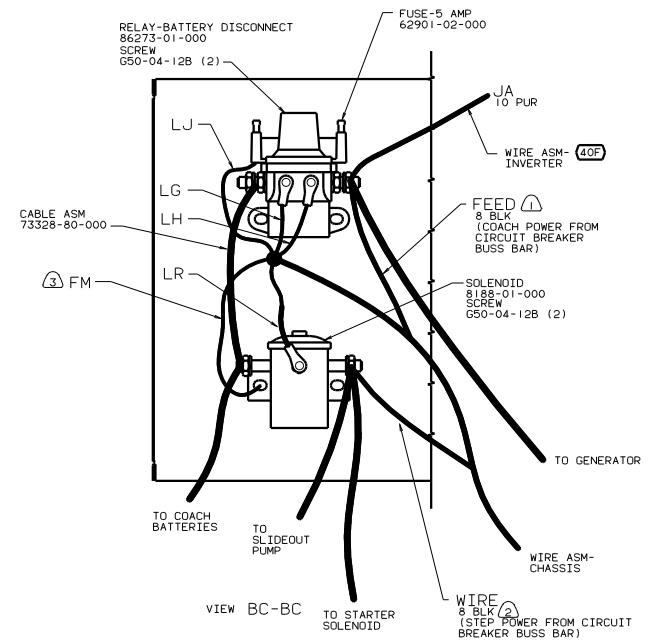
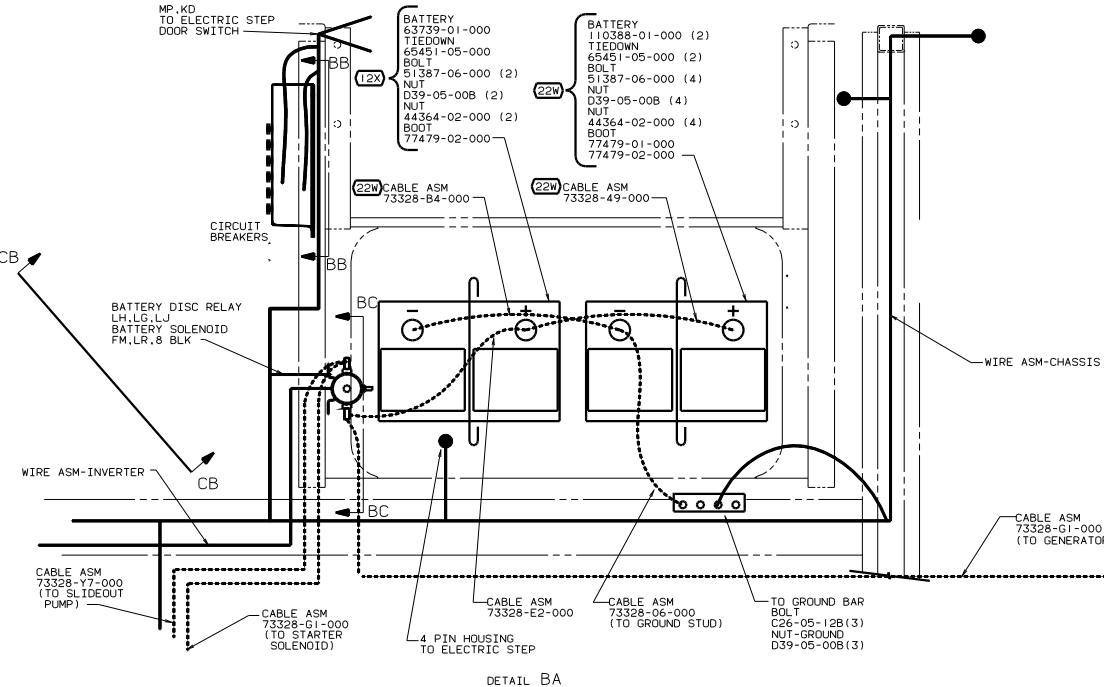
FOR ELECTRICAL
 TORQUE
 SPECIFICATIONS
 SEE DWG NO.
 128783-01-000

WINNEBAGO 00 430V

DATE	UNSPECIFIED TOLERANCES ARE:	MATERIAL
DATE	WHOLE OR 1/16"	7.0
DATE	ONE-PLACE (1/32)"	
DATE	TWO-PLACE (1/64)"	
DATE	THREE-PLACE (1/128)"	
DATE	FOUR-PLACE (1/256)"	
DATE	FIVE-PLACE (1/512)"	
DATE	SIX-PLACE (1/1024)"	
DATE	SEVEN-PLACE (1/2048)"	
DATE	EIGHT-PLACE (1/4096)"	
DATE	TEN-PLACE (1/10240)"	
DATE	TWELVE-PLACE (1/20480)"	

WIRING INSTL-CHASSIS

REF: 130230-G 1 133208

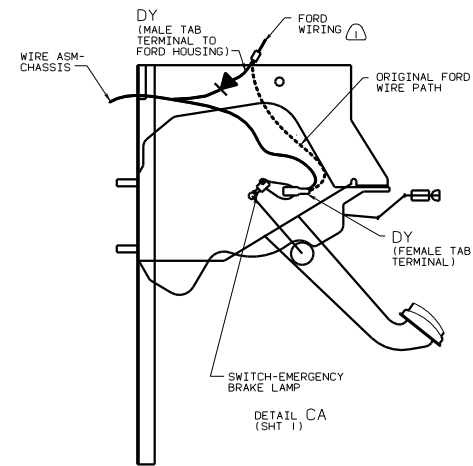
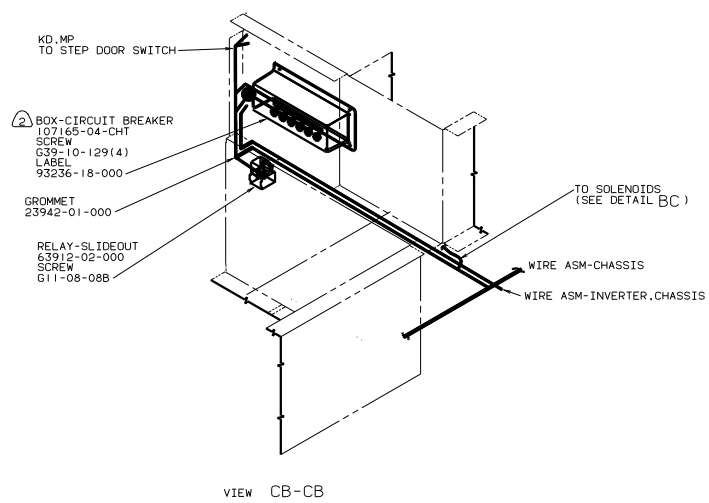


- NOTES:
- (3) SECURE WITH SOLENOID MOUNTING SCREW.
 - (2) LEAD IS MARKED WITH YELLOW TAPE.
 - (1) LEAD IS MARKED WITH RED TAPE.

FOR ELECTRICAL TORQUE SPECIFICATIONS SEE DWG NO. 128783-01-000

- (40F) INVERTER-DC/AC-130W
- (22W) CODES/STANDARDS-CSA/CHVSS
- (22W) BATTERY-TWO
- (16E) FORD CHASSIS 14,050 LB. GVWR
- (12X) BATTERY-ONE
- (1E2) ENTRANCE STEP-ELEC.
- (1B1) CODES/STANDARDS USA

00 430V



- NOTES:
- ② LOCATE BOX VERTICALLY BY CENTERING ON THE MOUNTING PLATE.
 - ① DISCONNECT FORD WIRING FROM THE PARK BRAKE INDICATOR SWITCH. RECONNECT CIRCUIT 'DY' AS SHOWN.

- ②65 CODES/STANDARDS-CSA/CMVSS
- ①6E FORD CHASSIS 14,050 LB.GVWR
- ①B1 CODES/STANDARDS USA

FOR ELECTRICAL TORQUE SPECIFICATIONS SEE DWG NO. 128783-01-000

TITLE: WIRING INSTL-CHASSIS		00 430V	
30 DAY SCALE DRAWING	1/8" = 1" (E)	SHEET 3 OF 3	DWG NO. 133208