



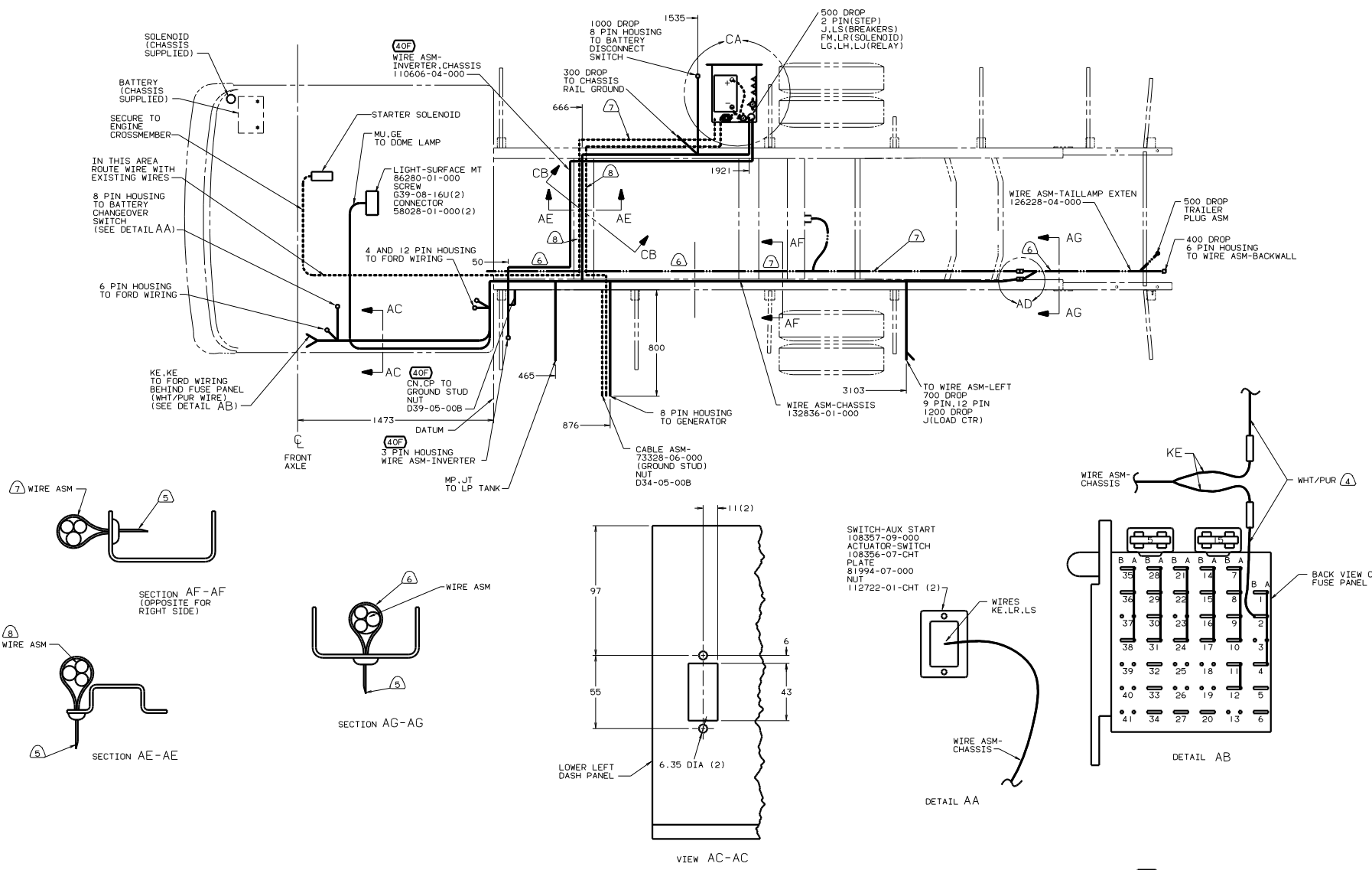
DANGER

Danger of electrical shock, burns or death. Always remove all power sources before attempting any repair, service or diagnostic work. Power can be present from shore power, generator, inverter or battery. All power sources must be disabled and secured before performing any service.



CAUTION

If you lack the skills, tools or equipment to perform diagnostic or repair work leave such work to an authorized Winnebago Industries dealer or other qualified shop.



- (8) WIRES TO BE TIED TO CROSS MEMBER USING EXISTING HOLES.
 - (7) WIRES TO BE TIED ON TOP OF RAIL USING EXISTING HOLES.
 - (6) WIRES TO BE TIED INSIDE RAIL USING EXISTING HOLES.
 - (5) CUTOFF EXCESS END OF WIRE TIE.
 - (4) CUT WIRE AND RECONNECT AS SHOWN.
3. USE WIRE TIES 8343-01-000 AND 116673-01-000 APPROXIMATELY 600 ON CENTER UNLESS OTHERWISE SPECIFIED.
2. SECURE CONDUIT 41953-01-000 OVER ALL WIRE IN CONTACT WITH SHARP EDGES.
1. LEGEND: **---**FORD WIRING; **—**WINNEBAGO WIRING; **----**CABLE.

40F INVERTER-DC/AC-130W
265 CODES/STANDARDS-CSA/CMVSS
160 FORD CHASSIS 11.500 LB. GVWR
1B1 CODES/STANDARDS USA

1B1 160 265

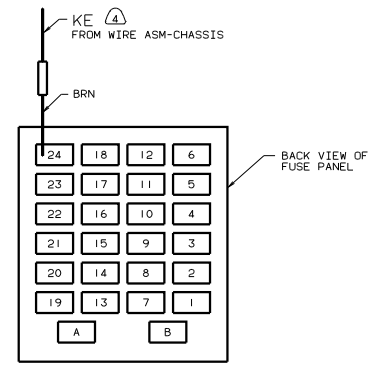
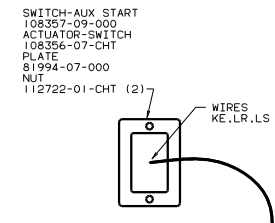
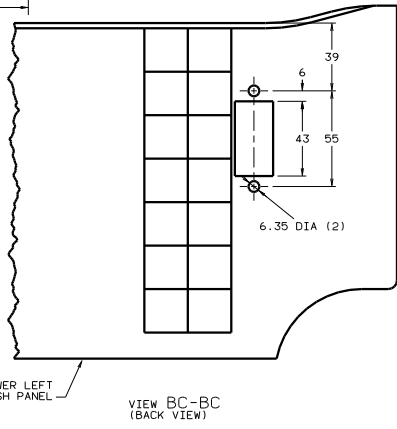
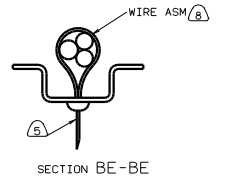
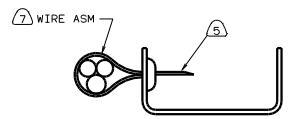
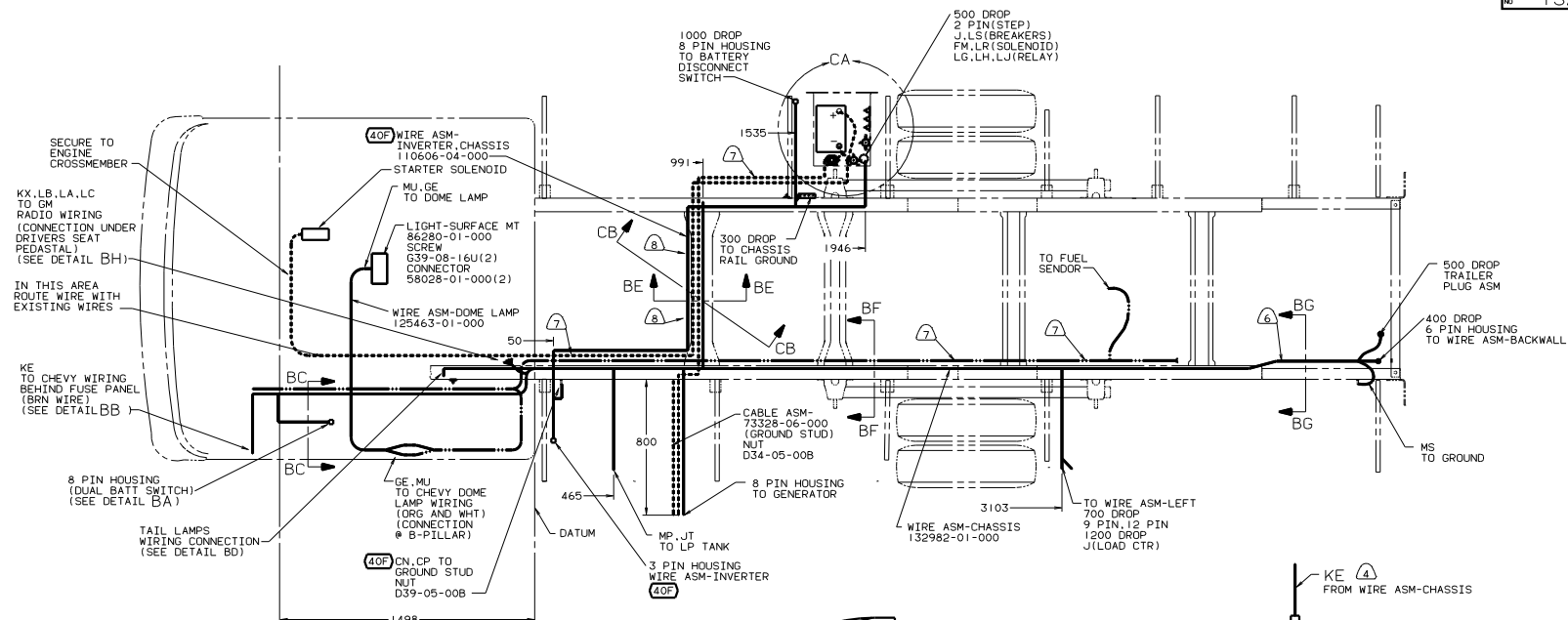
WINNEBAGO 00 324V

OF IN	DATE	UNDESIGNED TOLERANCES ARE	MATERIAL
CHP	DATE	WHOLE OR 1/16"	
DYE	DATE	ONE-PLACE (1/32)"	
D/E	DATE	TWO-PLACE (1/64)"	
D/E	DATE	MILLS	
COMP	DATE	INDU. WELD	
INDU.	DATE	INDU. WELD	
INDU.	DATE	INDU. WELD	

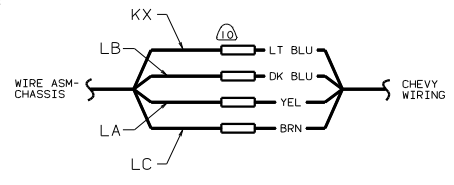
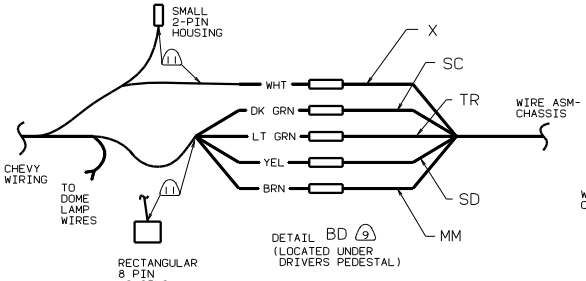
FOR ELECTRICAL TORQUE SPECIFICATIONS SEE DWG NO. 128783-01-000

WIRING INSTL-CHASSIS.FORD

REF: 129154 B 1 132840



- NOTES:
- LEGEND: — CHEVY WIRING; — WINNEBAGO WIRING; — CABLE.
 - CONNECT LEAD KE AS SHOWN.
 - CUT OFF EXCESS LENGTH OF WIRE TIE.
 - WIRES TO BE TIED INSIDE RAIL USING EXISTING HOLES.
 - WIRES TO BE TIED ON TOP OF RAIL USING EXISTING HOLES.
 - WIRES TO BE TIED TO CROSS MEMBER USING EXISTING HOLES.
 - TAPE THE ENDS OF UNUSED CHASSIS SUPPLIED WIRES AND TAPE BACK TO MAIN HARNESS.
 - CUT OFF CHEVY 6 PIN HOUSING AND RECONNECT AS SHOWN.
 - CUT AND REMOVE WIRES FROM GM HOUSING TO MAKE NEW CONNECTIONS.



FOR ELECTRICAL TORQUE SPECIFICATIONS SEE DWG NO. 128783-01-000

519	CAL EMISSION CHEVY
40F	INVERTER-DC/AC-130W
265	CODES/STANDARDS-CSA/CMVSS
1CW	CHEVY CHASSIS 12,300 LB.GWVR
1B1	CODES/STANDARDS USA

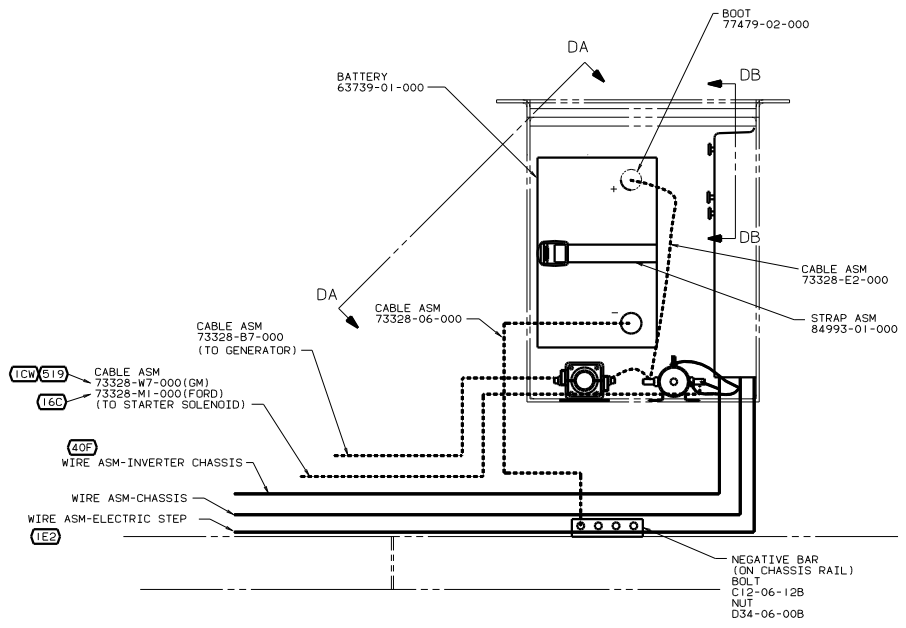
00 324V GM

TITLE: WIRING INSTL-CHASSIS, GM

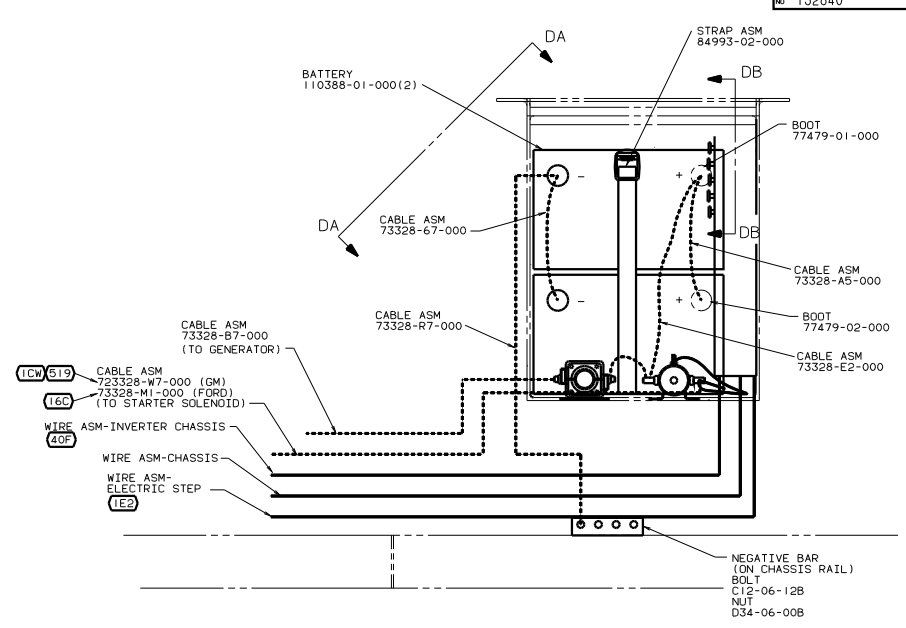
DATE: 11/80

SHEET 2 OF 4

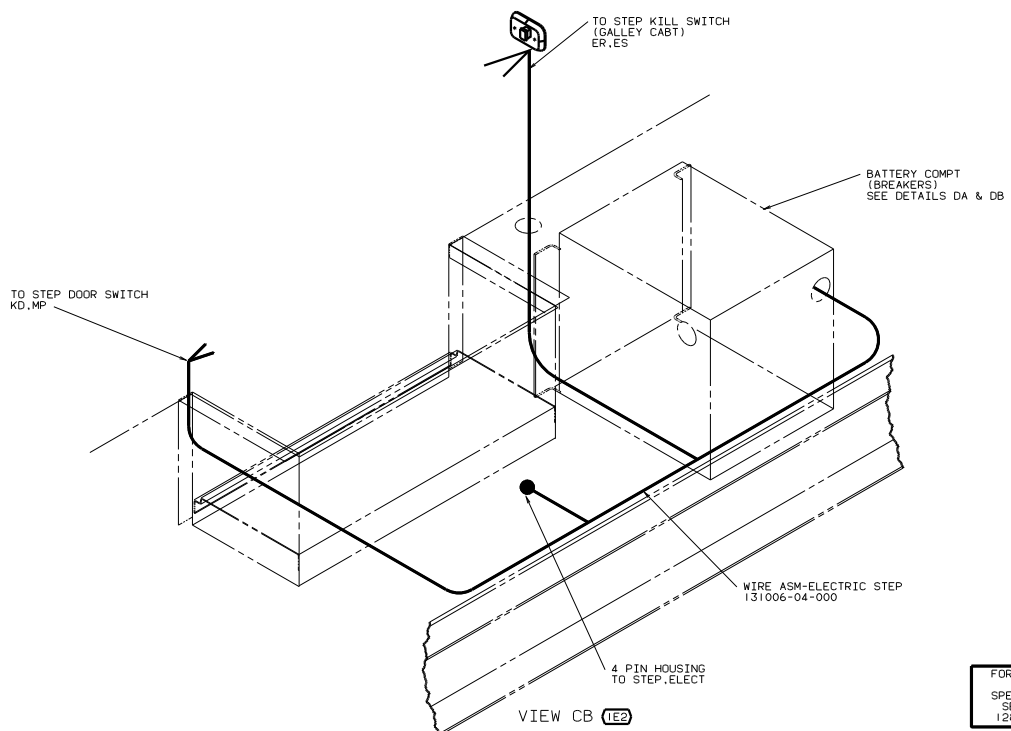
DWG NO 132840



DETAIL CA (12X)



DETAIL CA (22W)



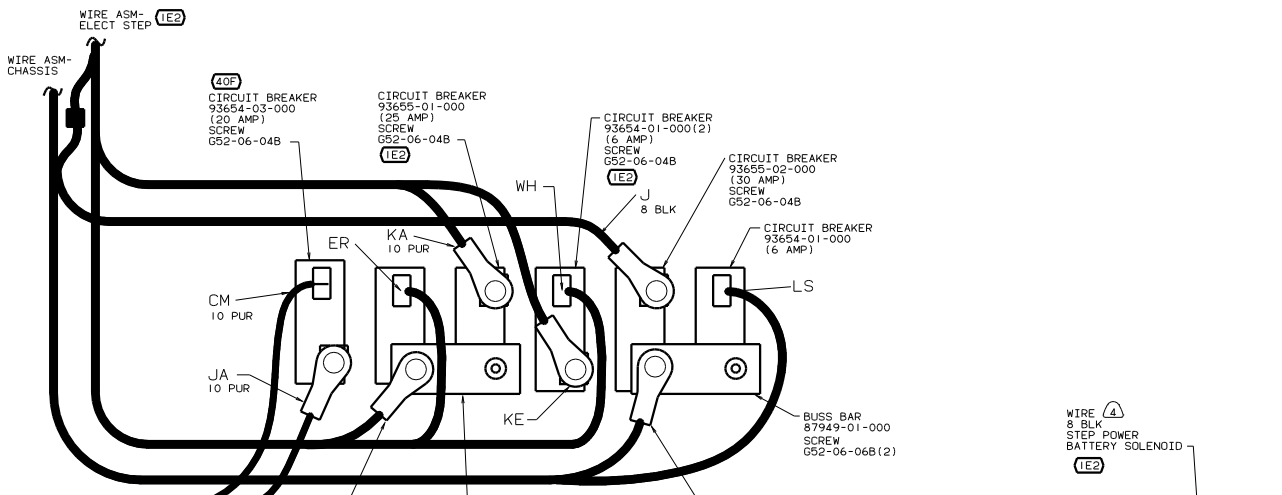
VIEW CB (1E2)

- (519) CAL EMISSION CHEVY
- (40F) INVERTER-DC/AC-130W
- (26S) CODES/STANDARDS-CSA/CMVSS
- (22W) BATTERY-TWO
- (16C) FORD CHASSIS 11,500 LB.GWVR
- (12X) BATTERY-ONE
- (1E2) ENTRANCE STEP-ELEC.
- (1CW) CHEVY CHASSIS 12,300 LB.GWVR
- (1B1) CODES/STANDARDS USA

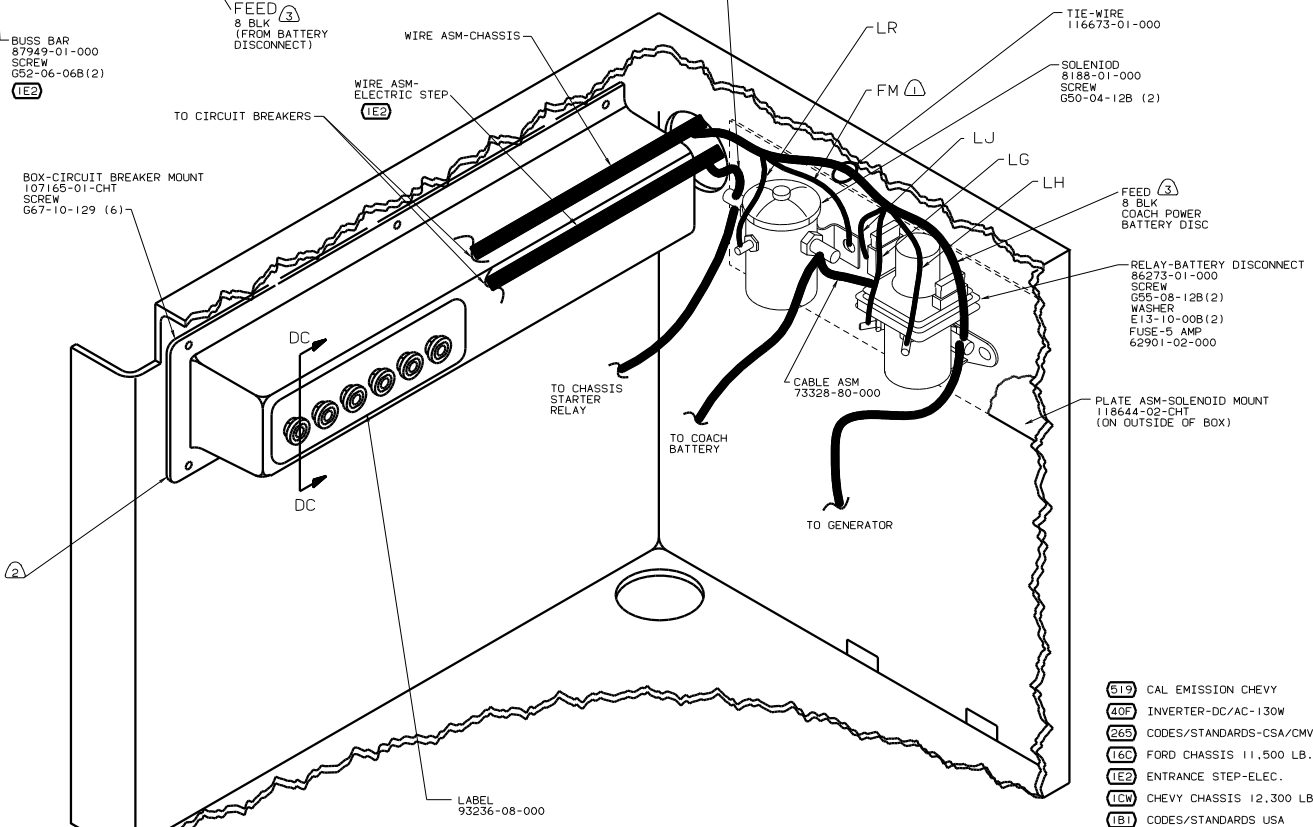
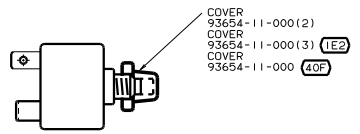
FOR ELECTRICAL TORQUE SPECIFICATIONS SEE DWG NO. 128783-01-000

(1B1) (26S) (1CW) (16C) (519) 00 324V

FILE NO.	WIRING INSTL-CHASSIS(RAIL)
30-100 SCALE GROUP	FIG. NO.
SHEET 3 OF 4	132840



VIEW DB-DB



VIEW DA-DA

- NOTES:**
- ④ LEAD MARKED WITH YELLOW TAPE.
 - ③ LEAD MARKED WITH RED TAPE.
 - ② LOCATE BOX HORIZONTALLY BY CENTERING ON HOLE IN REAR OF COMPARTMENT.
 - ① SECURE WITH SOLENOID MOUNTING BOLT.

- 519 CAL EMISSION CHEVY
- 40F INVERTER-DC/AC-130W
- 265 CODES/STANDARDS-CSA/CMVSS
- 16C FORD CHASSIS 11,500 LB.GVWR
- 1E2 ENTRANCE STEP-ELEC.
- 1CW CHEVY CHASSIS 12,300 LB.GVWR
- 1B1 CODES/STANDARDS USA
- 1B1 265
- 1CW 16C 519

FOR ELECTRICAL TORQUE SPECIFICATIONS SEE DWG NO. 128783-01-000