



DANGER

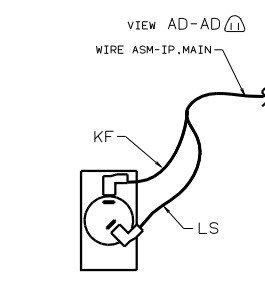
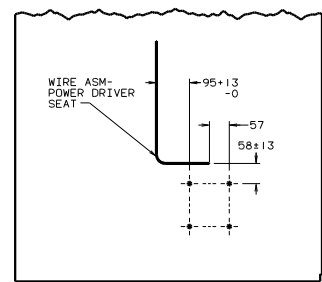
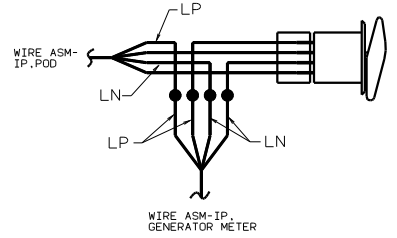
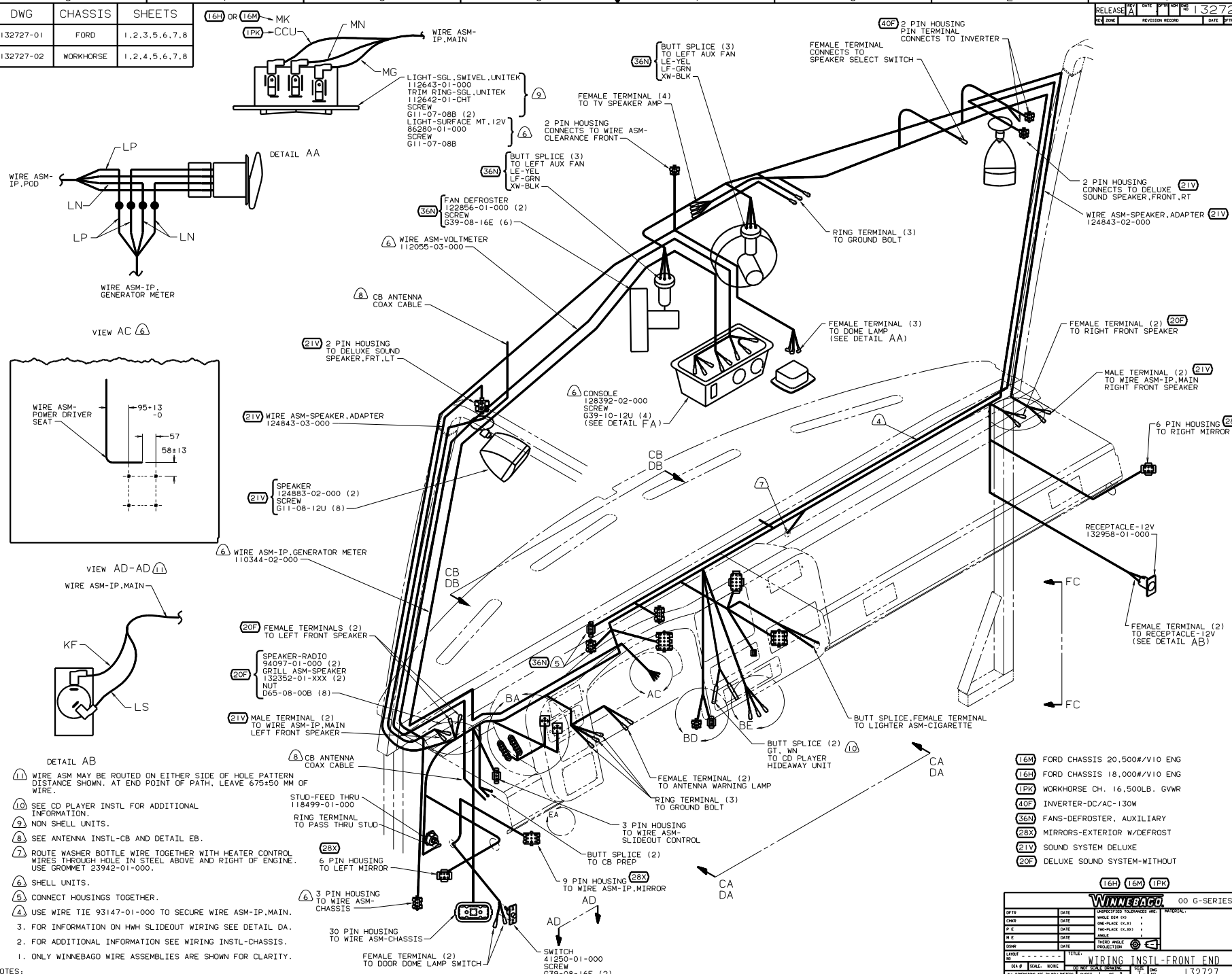
Danger of electrical shock, burns or death. Always remove all power sources before attempting any repair, service or diagnostic work. Power can be present from shore power, generator, inverter or battery. All power sources must be disabled and secured before performing any service.



CAUTION

If you lack the skills, tools or equipment to perform diagnostic or repair work leave such work to an authorized Winnebago Industries dealer or other qualified shop.

DWG	CHASSIS	SHEETS
132727-01	FORD	1,2,3,5,6,7,8
132727-02	WORKHORSE	1,2,4,5,6,7,8

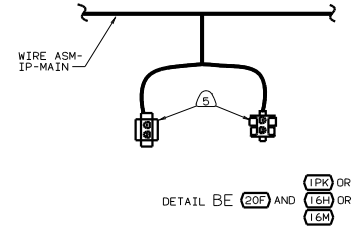
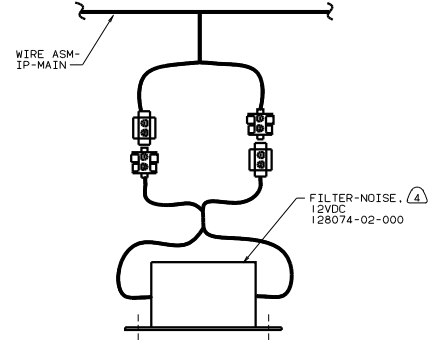
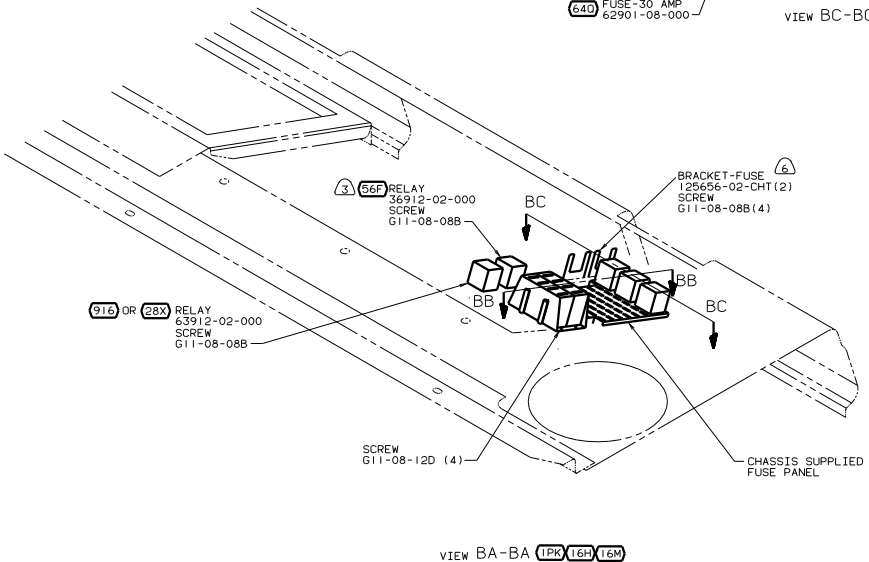
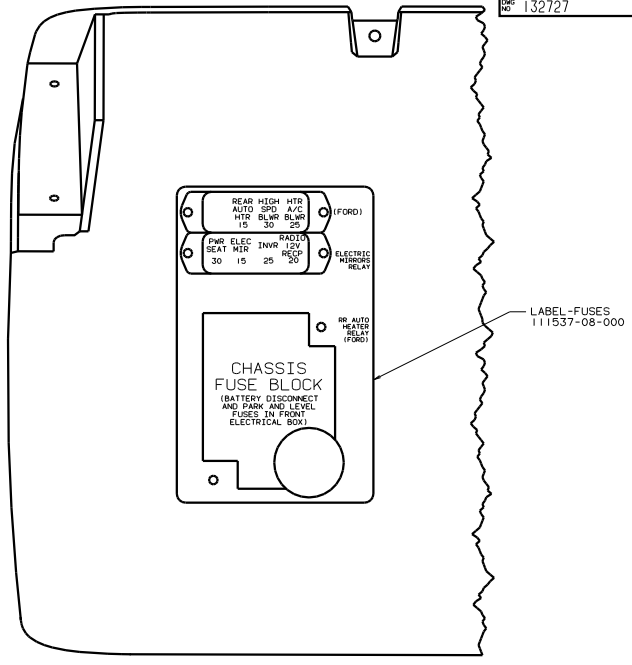
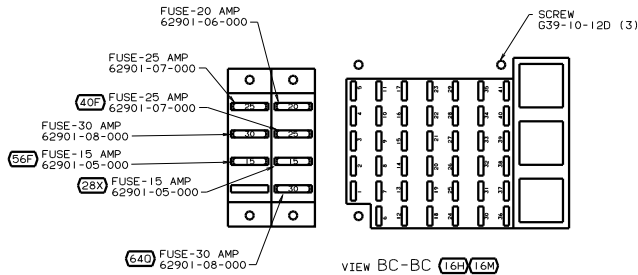
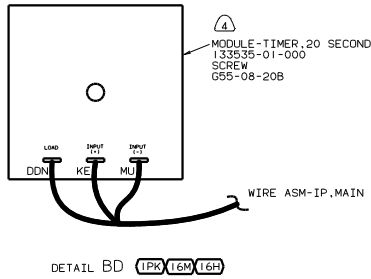
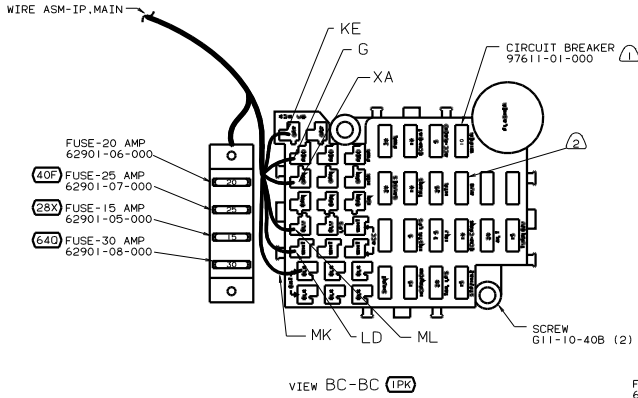


- DETAIL AB
- ⚠️ WIRE ASM MAY BE ROUTED ON EITHER SIDE OF HOLE PATTERN DISTANCE SHOWN. AT END POINT OF PATH, LEAVE 675±50 MM OF WIRE.
 - ⑩ SEE CD PLAYER INSTL FOR ADDITIONAL INFORMATION.
 - ⑨ NON SHELL UNITS.
 - ⑧ SEE ANTENNA INSTL-CB AND DETAIL EB.
 - ⚠️ ROUTE WASHER BOTTLE WIRE TOGETHER WITH HEATER CONTROL WIRES THROUGH HOLE IN STEEL ABOVE AND RIGHT OF ENGINE. USE GROMMET 23942-01-000.
 - Ⓜ SHELL UNITS.
 - ⑤ CONNECT HOUSINGS TOGETHER.
 - ④ USE WIRE TIE 93147-01-000 TO SECURE WIRE ASM-IP.MAIN.
 - 3. FOR INFORMATION ON HHM SLIDEOUT WIRING SEE DETAIL DA.
 - 2. FOR ADDITIONAL INFORMATION SEE WIRING INSTL-CHASSIS.
 - 1. ONLY WINNEBAGO WIRE ASSEMBLIES ARE SHOWN FOR CLARITY.

NOTES:

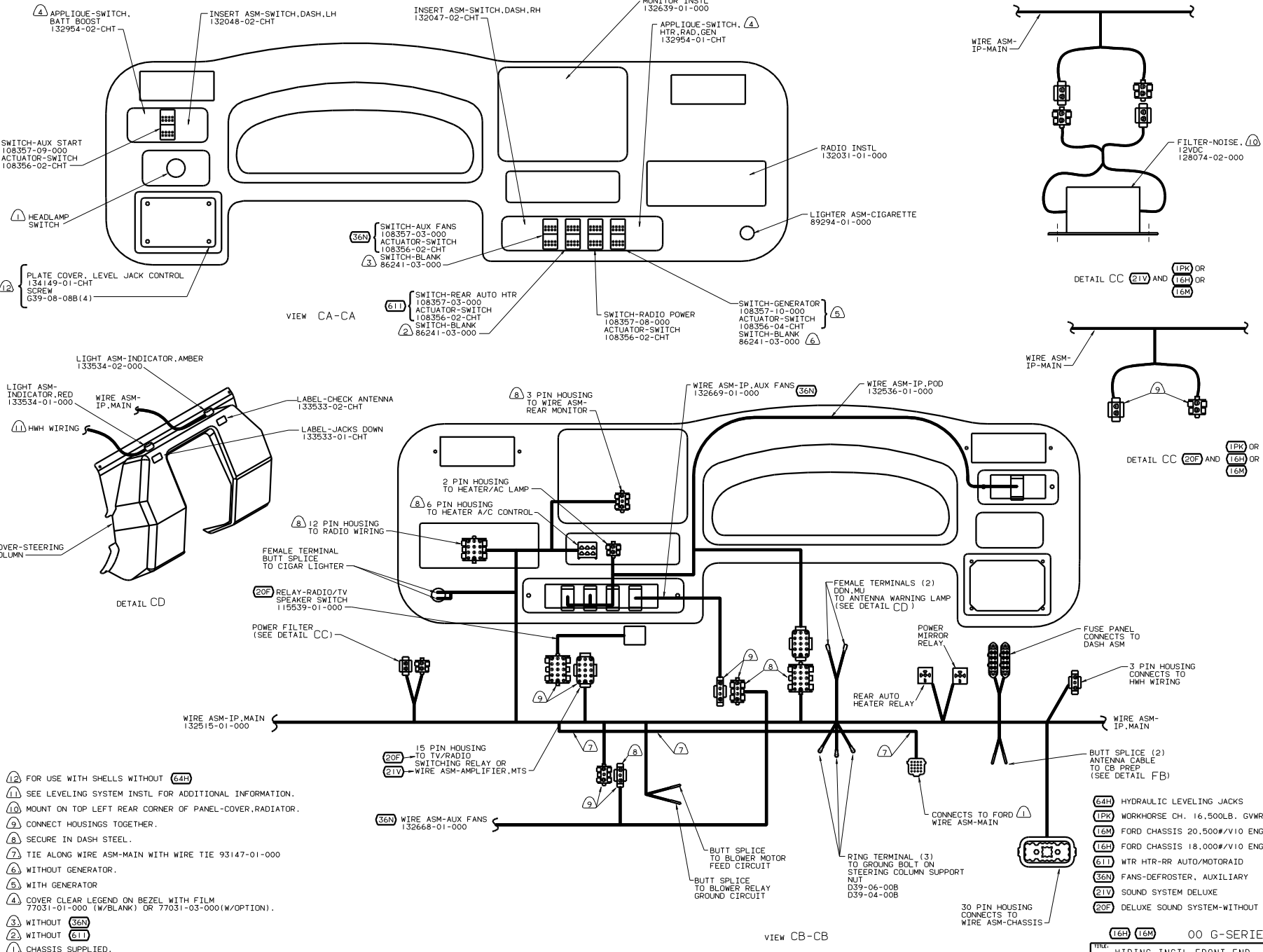
- ①⑥M FORD CHASSIS 20,500#/V10 ENG
- ①⑥H FORD CHASSIS 18,000#/V10 ENG
- ①PK WORKHORSE CH. 16,500LB. GVWR
- ④⑥F INVERTER-DC/AC-130W
- ③⑥N FANS-DEFROSTER, AUXILIARY
- ②⑧X MIRRORS-EXTERIOR W/DEFROST
- ②①V SOUND SYSTEM DELUXE
- ②②F DELUXE SOUND SYSTEM-WITHOUT

①⑥H		①⑥M		①PK	
00 G-SERIES					
WINNEBAGO					
OF IN	DATE	UNDESIGNED REVISIONS ARE	INTEGRAL		
CHG	DATE	WHOLE OR IN PART			
REV	DATE	ONE-PLACE (R, X)			
PL	DATE	TWO-PLACE (R, X)			
DATE	DATE	ANGLE			
DATE	DATE	INDIC. W/ANGLE PROJECTION			
DATE	DATE				
TITLE: WIRING INSTL-FRONT END					
REV #	SCALE	NOTE	DO NOT SCALE DIMENSIONS	THIS DIM	132727
		SHEET 1 OF 8		132727	



- (16M) FORD CHASSIS 20.500#/V10 ENG
- (16H) FORD CHASSIS 18.000#/V10 ENG
- (1PK) WORKHORSE CH. 16.500LB. GVWR
- (916) MIRRORS-EXTERIOR. EXPORT
- (640) SEAT PED-6-WAY POWER DRIVER
- (56F) HEATER-AUXILIARY AUTOMOTIVE
- (40F) INVERTER-DC/AC-130W
- (28X) MIRRORS-EXTERIOR W/DEFROST

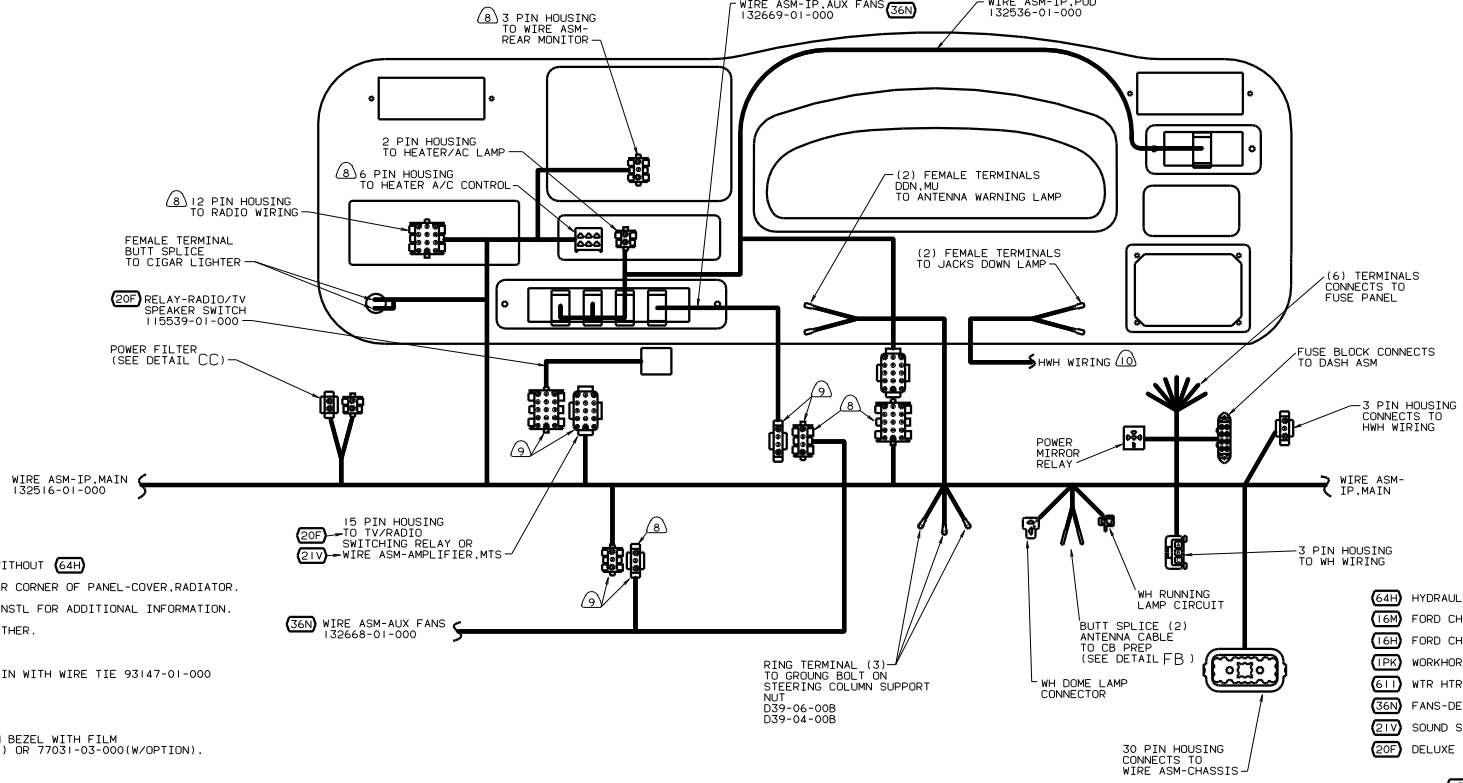
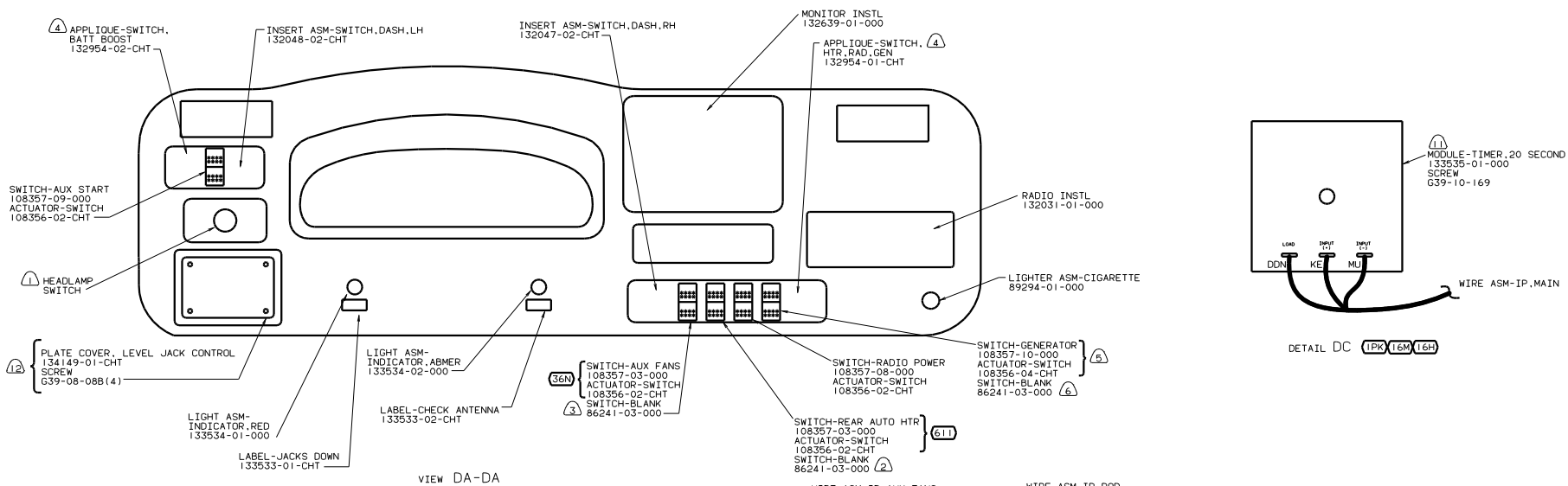
- NOTES:
- (A) NOT USED WITH (16H) OR (16M)
 - (B) CONNECT HOUSINGS TOGETHER.
 - (C) MOUNT ON TOP LEFT REAR CORNER OF PANEL-COVER, RADIATOR.
 - (3) NOT USED WITH (1PK)
 - (2) REPLACE 30A CIRCUIT BREAKER WITH 15 AMP FUSE AND SAVE FOR USE ELSEWHERE
 - (1) TRIM FUSE BLOCK SO CIRCUIT BREAKER FITS PROPERLY. REPLACE 25 AMP FUSE AND SAVE FOR USE ELSEWHERE.



DETAIL CC (21V) AND (1PK) OR (16H) OR (16M)

DETAIL CC (20F) AND (1PK) OR (16H) OR (16M)

- (64H) HYDRAULIC LEVELING JACKS
- (1PK) WORKHORSE CH. 16,500LB. GVWR
- (16M) FORD CHASSIS 20.500#/V10 ENG
- FORD CHASSIS 18.000#/V10 ENG
- (611) WTR HTR-RR AUTO/MOTORAID
- (36N) FANS-DEFROSTER, AUXILIARY
- (21V) SOUND SYSTEM DELUXE
- (20F) DELUXE SOUND SYSTEM-WITHOUT

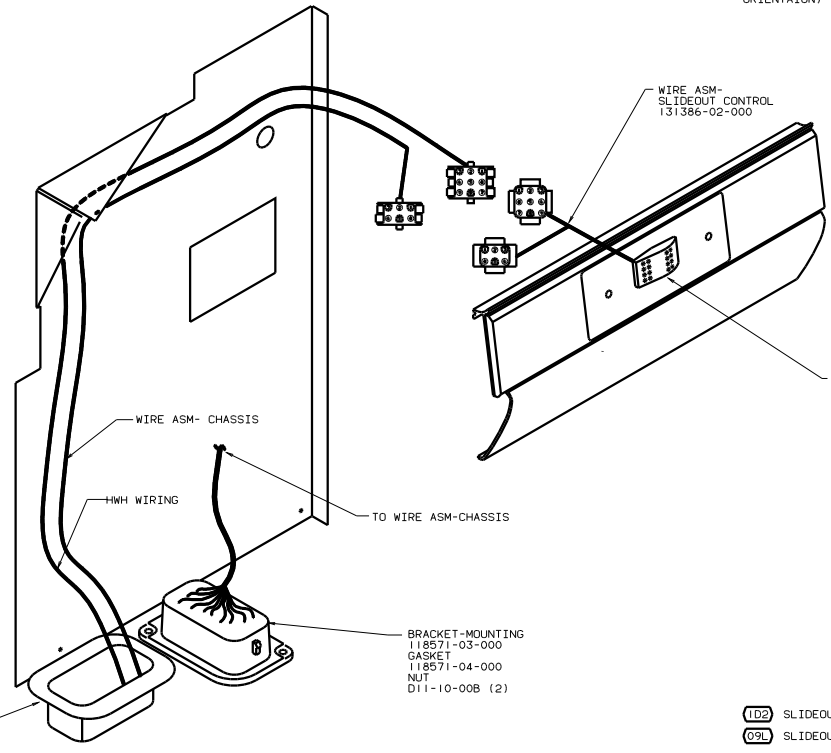
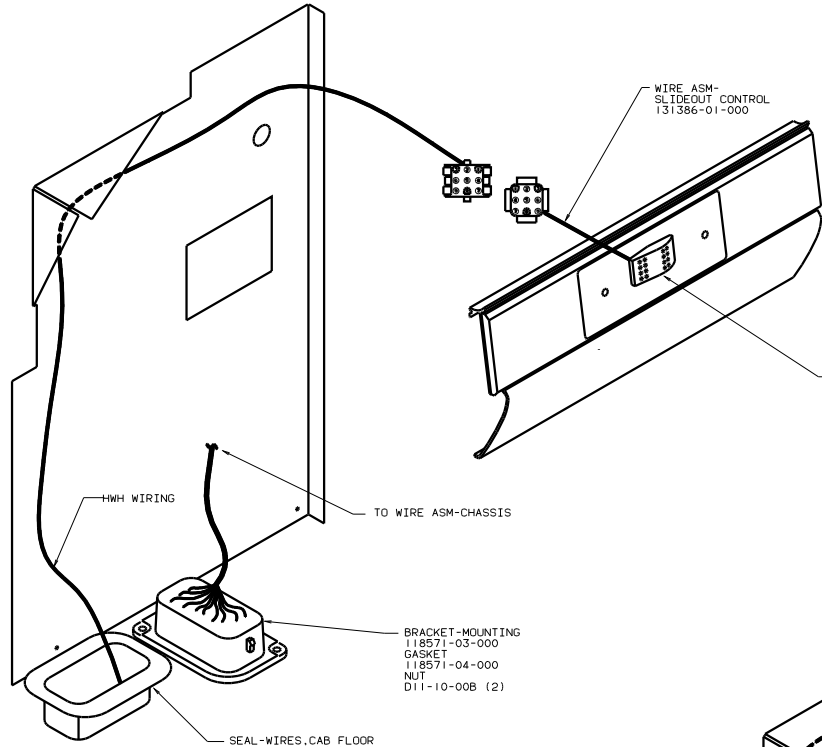


- (12) FOR USE WITH SHELLS WITHOUT (64H)
- (11) MOUNT ON TOP LEFT REAR CORNER OF PANEL-COVER, RADIATOR.
- (10) SEE LEVELING SYSTEM INSTL FOR ADDITIONAL INFORMATION.
- (9) CONNECT HOUSINGS TOGETHER.
- (8) SECURE IN DASH STEEL.
- (7) TIE ALONG WIRE ASM-MAIN WITH WIRE TIE 93147-01-000
- (6) WITHOUT GENERATOR.
- (5) WITH GENERATOR
- (4) COVER CLEAR LEGEND ON BEZEL WITH FILM 77031-01-000 (W/BLANK) OR 77031-03-000 (W/OPTION).
- (3) WITHOUT (36N)
- (2) WITHOUT (61I)
- (1) CHASSIS SUPPLIED.

- (64H) HYDRAULIC LEVELING JACKS
- (16M) FORD CHASSIS 20,500#/V10 ENG
- (16H) FORD CHASSIS 18,000#/V10 ENG
- (1PK) WORKHORSE CH. 16,500LB. GVWR
- (61I) WTR HTR-RR AUTO/MOTORAID
- (36N) FANS-DEFROSTER, AUXILIARY
- (21V) SOUND SYSTEM DELUXE
- (20F) DELUXE SOUND SYSTEM-WITHOUT

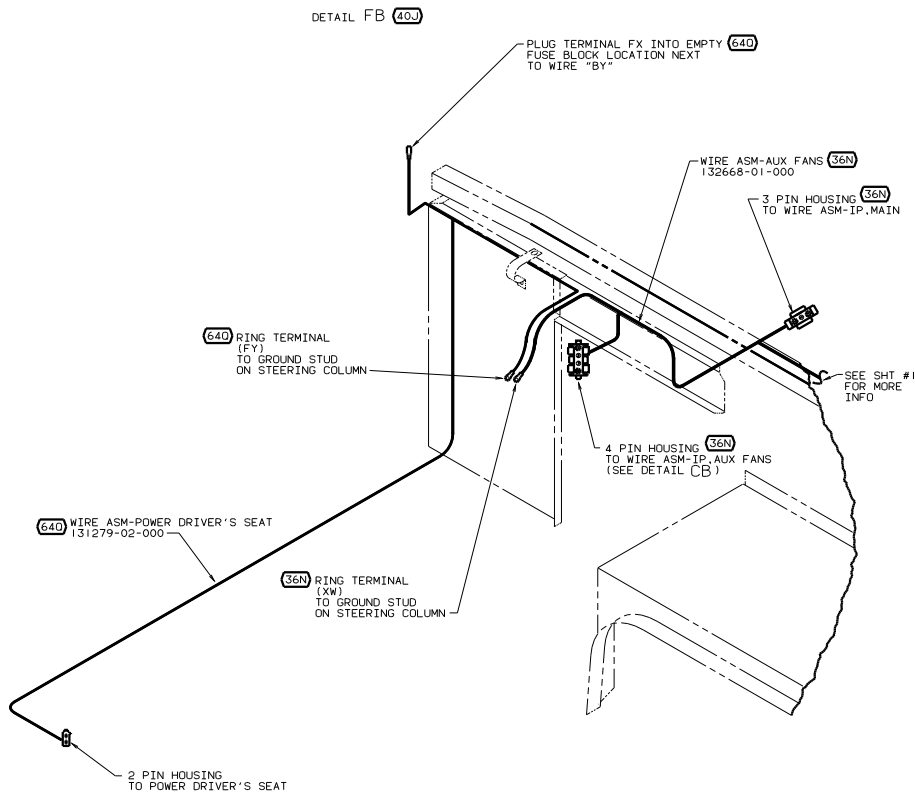
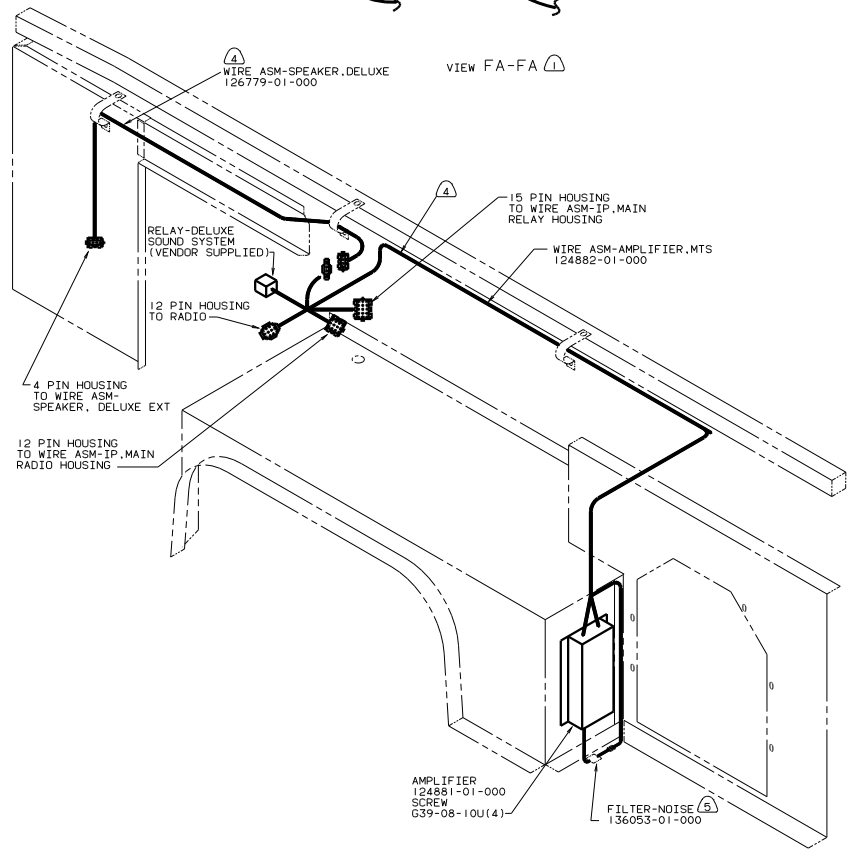
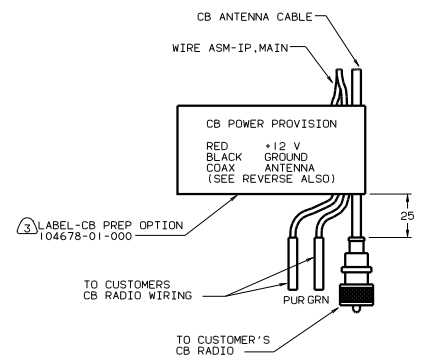
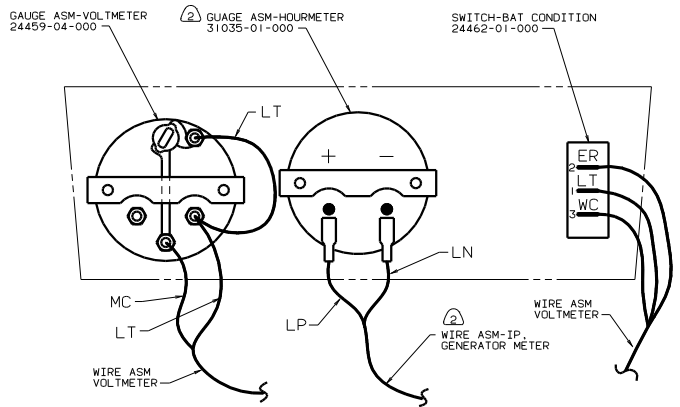
IPK 00 G-SERIES	
TITLE	WIRING INSTL-FRONT END
NO. OF SHEETS	16
SHEET NO.	4 OF 8
DATE	11/6
132727	

NOTES:



- NOTES:
- ③ SWITCH SHOWN WITHOUT WIRE ASM HOUSING CONNECTED.
 - ② SAME FOR ALL SWITCHES EXCEPT GENERATOR SWITCH AND AUX START SWITCH.
 - ① SAME FOR ALL DASH SWITCHES.

1D2 SLIDEOUT ROOM-REAR RIGHTHAND
09L SLIDEOUT ROOM FRONT LEFT



- 5 PLUG FILTER INTO MONO TV INPUT AND RCA CABLE INTO FILTER.
- 4 ROUTE WITH WIRE ASM-IP, MAIN
- 3 EDGE OF LABEL TO HANG JUST BELOW BOTTOM OF DASH
- 2 USE ON SHELL W/GENERATOR.
- 1 USE WITH SHELLS ONLY.

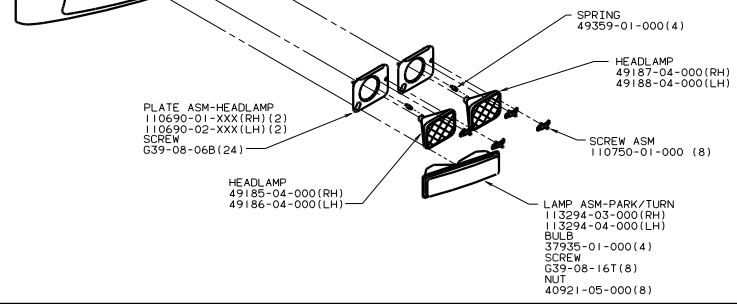
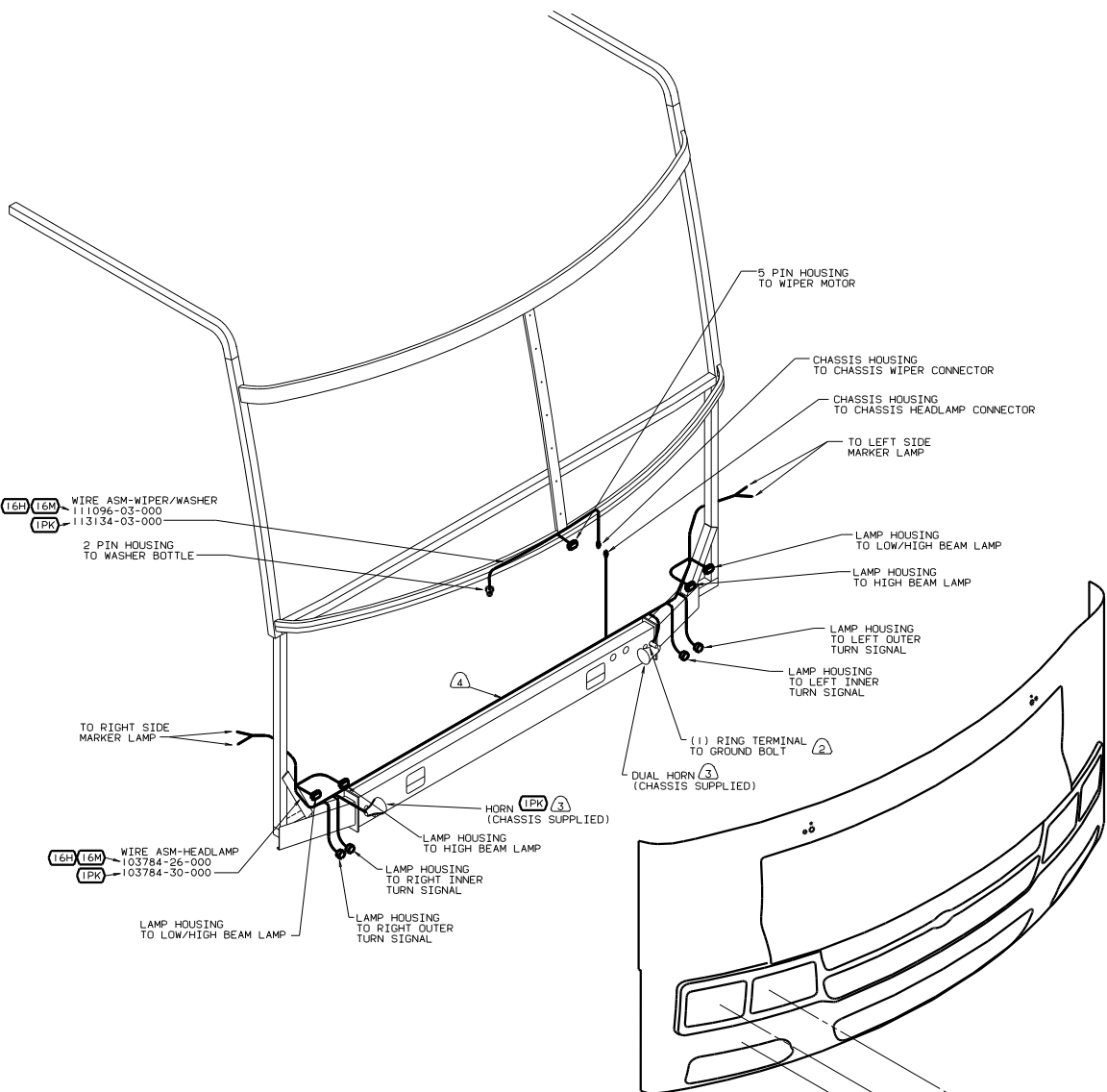
VIEW FC-FC (21V)
 (DELUXE SOUND WIRING)

VIEW FC-FC (36N) (640)
 (AUXILIARY WIRING)

- 640 SEAT PED-6-WAY POWER DRIVER (AUXILIARY WIRING)
- 40J CB RADIO PREP
- 36N FANS-DEFROSTER, AUXILIARY
- 21V SOUND SYSTEM DELUXE

00 G-SERIES

TITLE		WIRING INSTL-FRONT END	
30	NO	DATE	REV
1	1	1	1
SHEET 6 OF 8		132727	



- ④ SECURE WIRE ASM APPROX. EVERY 450 TO BATTERY CABLES AND BRACKETS. USE TIE-WIRE 8343-01-000 OR 93147-01-000 AS APPROPRIATE.
- ③ MOUNT ON GROUND BOLT.
- ② CLEAN PAINT OFF METAL (BOLT) BEFORE CONNECTING GROUND TO INSURE CONTACT.

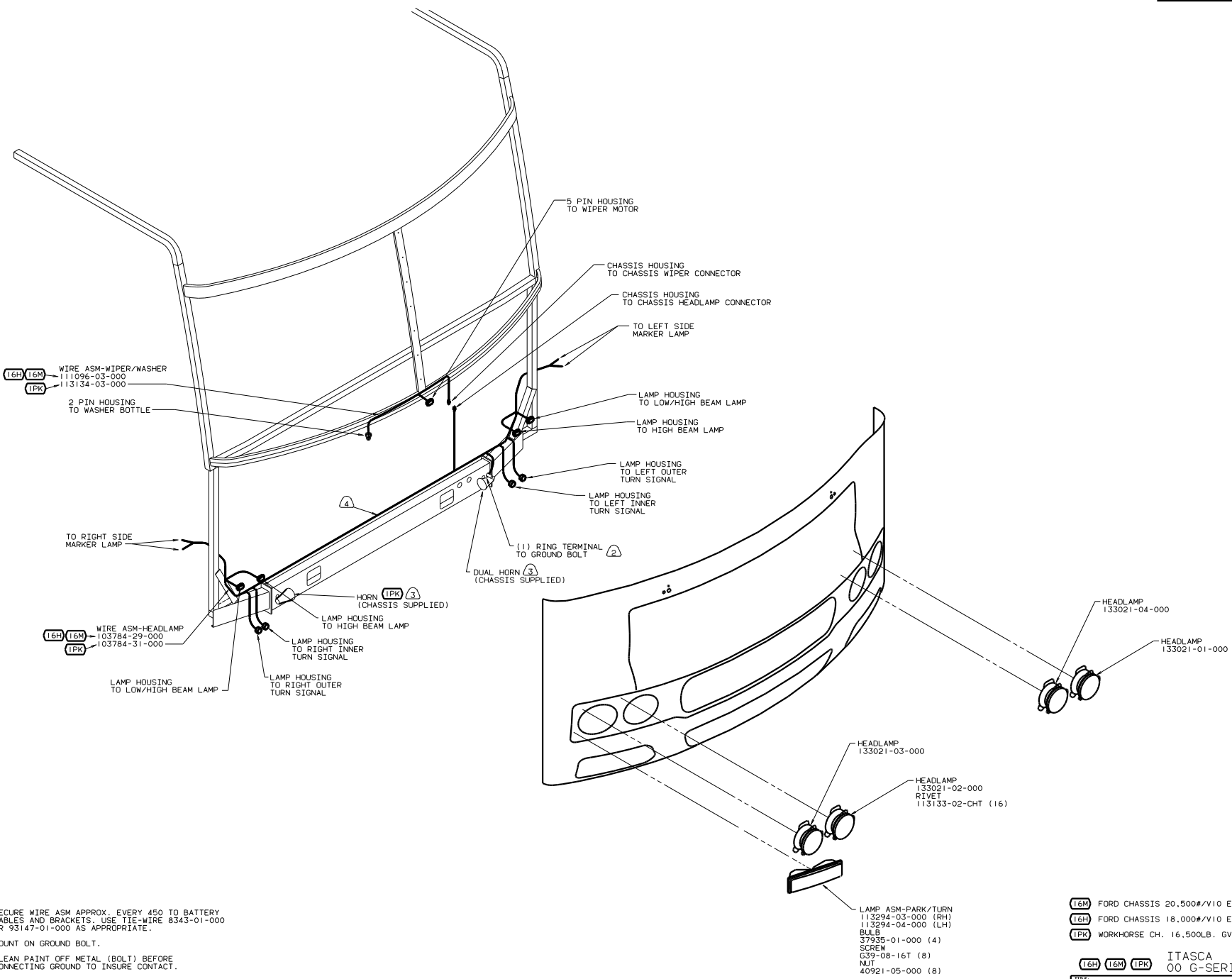
1. GATHER ALL EXCESS WIRE AFTER MAKING ALL CONNECTIONS AND BUNDLE AND SECURE WITH TIE-WIRE 8343-01-000 OR 93147-01-000.

NOTES:

(16M) FORD CHASSIS 20,500#/V10 ENG
 (16H) FORD CHASSIS 18,000#/V10 ENG
 (1PK) WORKHORSE CH. 16,500LB. GWWR

WINNEBAGO
 00 G-SERIES

TITLE: WIRING INSTL-FRONT END
 SHEET 7 of 8



- ④ SECURE WIRE ASM APPROX. EVERY 450 TO BATTERY CABLES AND BRACKETS. USE TIE-WIRE 8343-01-000 OR 93147-01-000 AS APPROPRIATE.
- ③ MOUNT ON GROUND BOLT.
- ② CLEAN PAINT OFF METAL (BOLT) BEFORE CONNECTING GROUND TO INSURE CONTACT.
1. GATHER ALL EXCESS WIRE AFTER MAKING ALL CONNECTIONS AND BUNDLE AND SECURE WITH TIE-WIRE 8343-01-000 OR 93147-01-000.

NOTES:

- LAMP ASM-PARK/TURN
113294-03-000 (RH)
113294-04-000 (LH)
- BULBS
37935-01-000 (4)
- SCREW
G39-08-16T (8)
- NUT
40921-05-000 (8)

16M	FORD CHASSIS 20,500#/V10 ENG
16H	FORD CHASSIS 18,000#/V10 ENG
1PK	WORKHORSE CH. 16,500LB. GVWR

ITASCA
00 G-SERIES

TITLE:	WIRING INSTL-FRONT END
DO NOT SCALE DRAWING	FIG. NO.
SHEET 8 OF 8	132727