



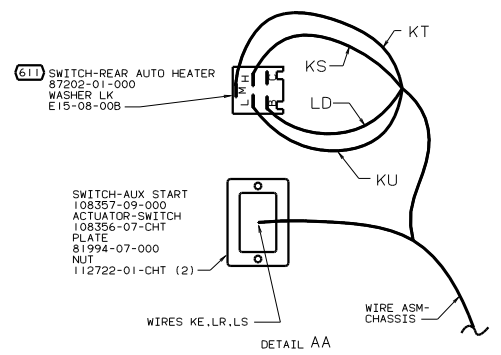
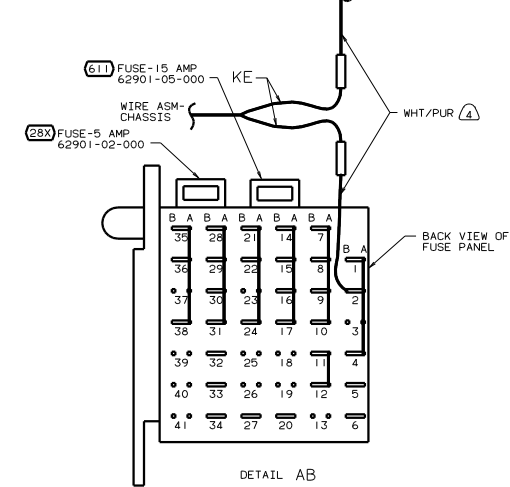
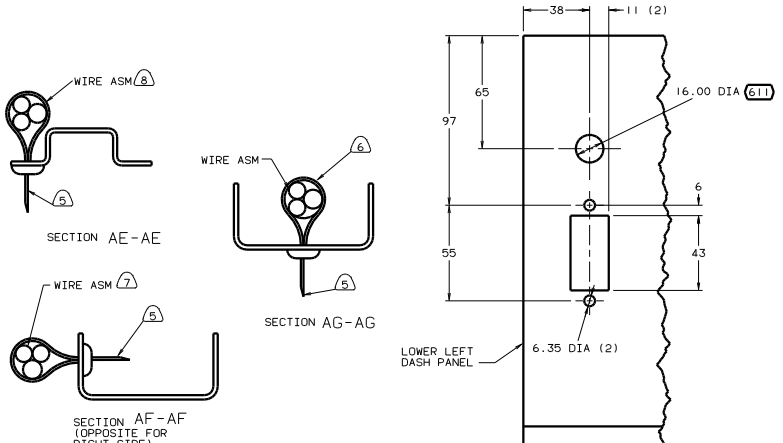
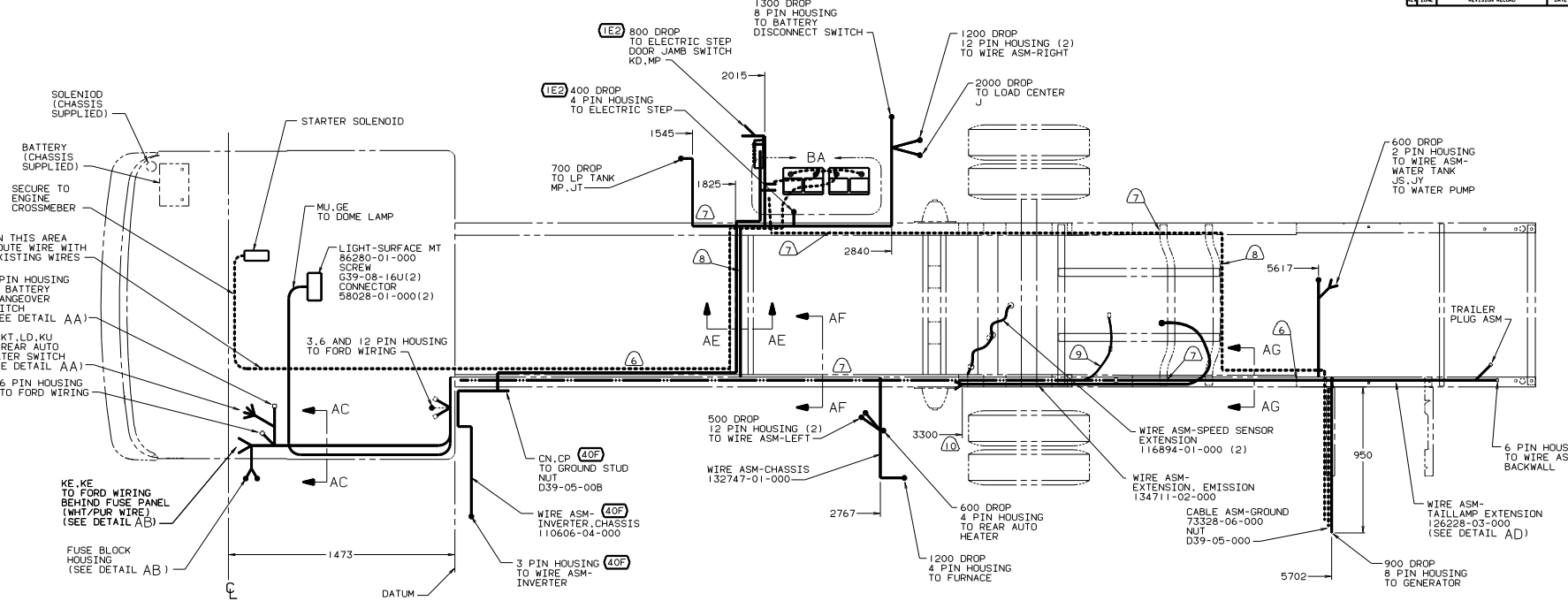
DANGER

Danger of electrical shock, burns or death. Always remove all power sources before attempting any repair, service or diagnostic work. Power can be present from shore power, generator, inverter or battery. All power sources must be disabled and secured before performing any service.



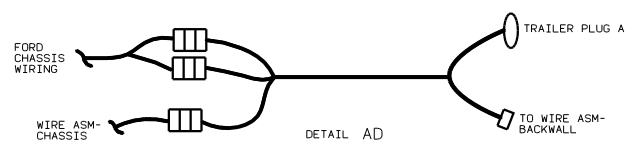
CAUTION

If you lack the skills, tools or equipment to perform diagnostic or repair work leave such work to an authorized Winnebago Industries dealer or other qualified shop.



- 10. SPLIT AND EXTEND FORD WIRE ASM TO EMISSION SENSOR IN FUEL TANK.
- 9. USE AUX FUEL TANKS SENDER WIRE EXT (CHASSIS SUPPLIED).
- 8. WIRES TO BE TIED TO CROSS MEMBER USING EXISTING HOLES.
- 7. WIRES TO BE TIED ON TOP OF RAIL USING EXISTING HOLES.
- 6. WIRES TO BE TIED INSIDE RAIL USING EXISTING HOLES.
- 5. CUT OFF EXCESS ENDS OF WIRE TIES.
- 4. CUT WIRE AND RECONNECT AS SHOWN.
- 3. USE WIRE TIES 8343-01-000 AND 116673-01-000 APPROXIMATELY 600MM ON CENTER UNLESS OTHERWISE SPECIFIED.
- 2. SECURE CONDUIT 41953-01-000 OVER ALL WIRE IN CONTACT WITH SHARP EDGES.
- 1. LEGEND: - - - FORD WIRING — WINNEBAGO WIRING CABLE.

FOR ELECTRICAL TORQUE SPECIFICATIONS SEE DWG NO. 128783-01-000



611	WTR HTR-RR AUTO/MOTORAID
40F	INVERTER-DC/AC-130W
28X	MIRRORS-EXTERIOR W/DEFROST
265	CODES/STANDARDS-CSA/CMVSS
16E	FORD CHASSIS 14,050 LB.GVWR
1E2	ENTRANCE STEP-ELEC.
1B1	CODES/STANDARDS USA

00 431A

OP IN	DATE	UNDESIGNED TOLERANCES ARE:	DATE	MATERIAL
CHKD	DATE	WHOLE OR 1/2		
DWG	DATE	ONE-PLACE (1, 2)		
D/E	DATE	TWO-PLACE (1, 2, 3)		
DATE	DATE	MILES		
COMP	DATE	INDU. W/ASTE PRODUCTION		

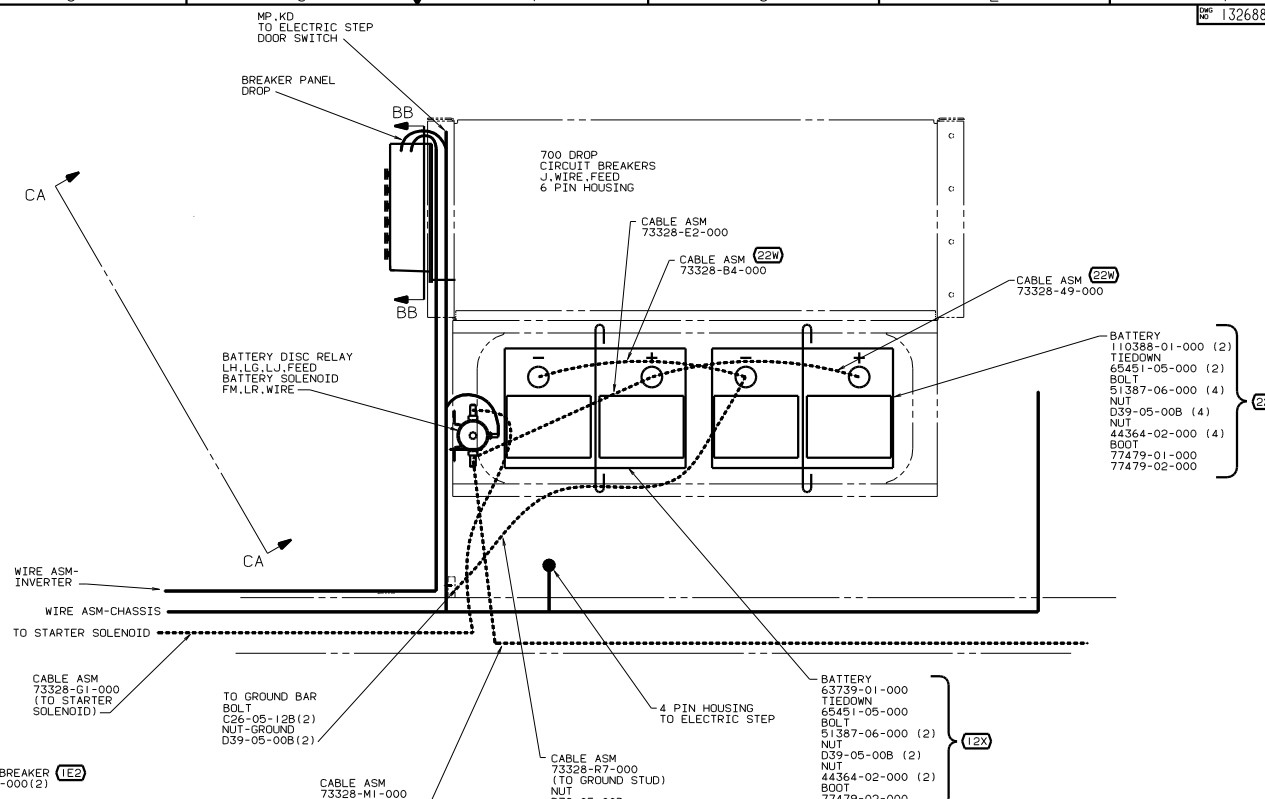
LAUNCH NO. TITLE: WIRING INSTL-CHASSIS

SCALE: NONE TO THE SCALE DRAWING

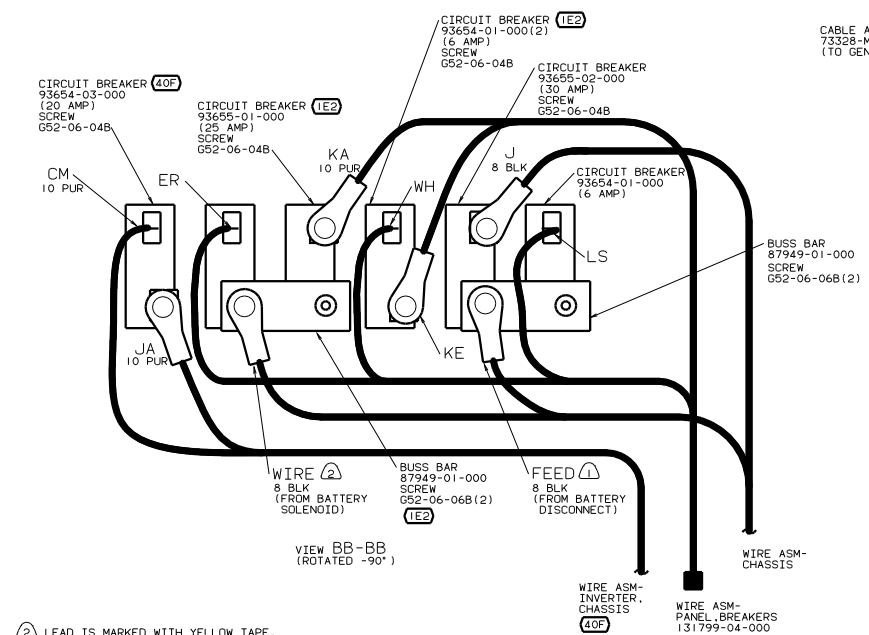
SHEET 1 OF 3

132688

REF: 129231-D-1



DETAIL BA (16D)



- (40F) INVERTER-DC/AC-130W
- (26S) CODES/STANDARDS-CSA/CMVSS
- (22W) BATTERY-TWO
- (16E) FORD CHASSIS 14,050 LB. GVWR
- (12X) BATTERY-ONE
- (IE2) ENTRANCE STEP-ELEC.
- (1B1) CODES/STANDARDS USA
- (1B1) (16D) (26S) 00 431A

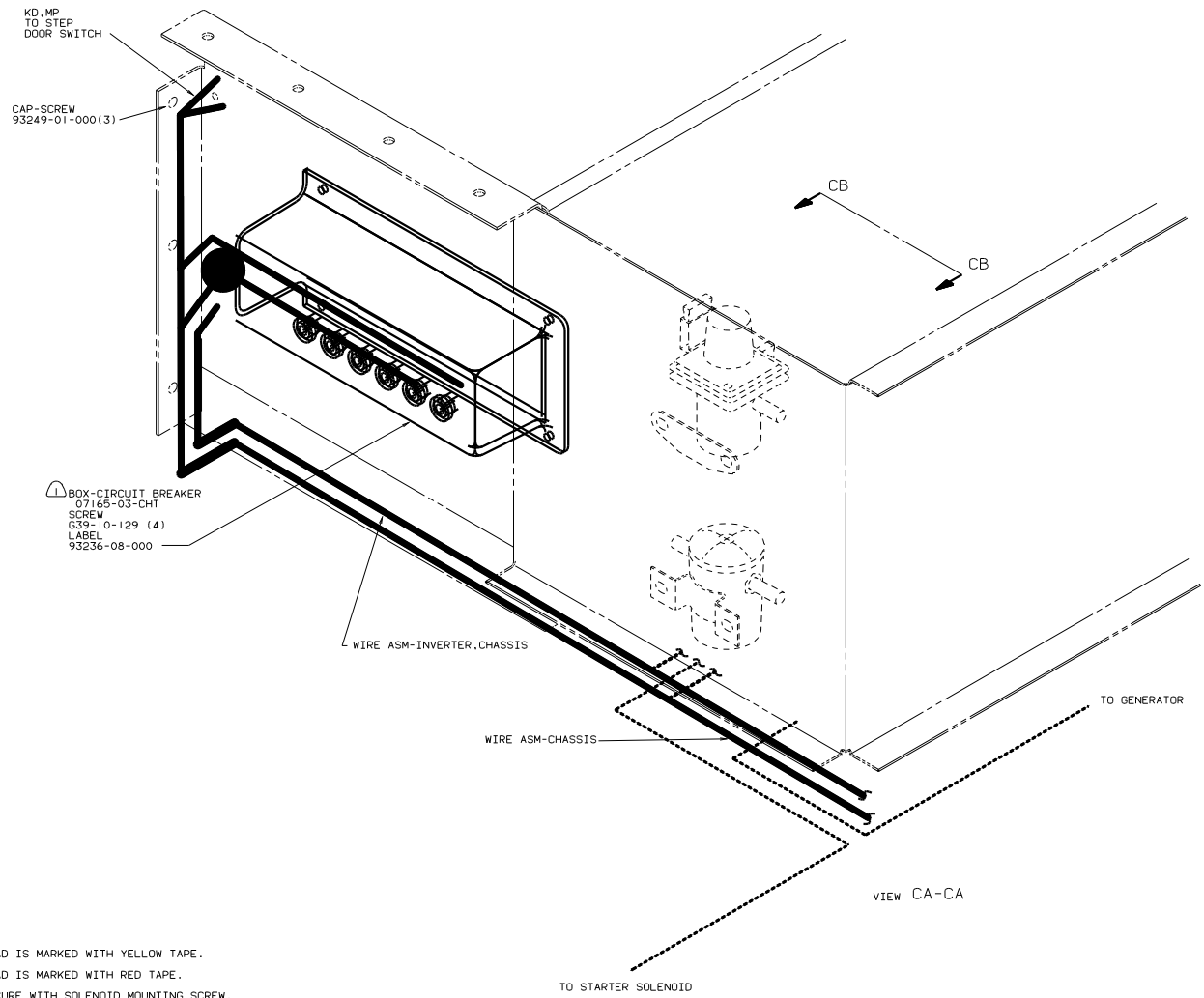
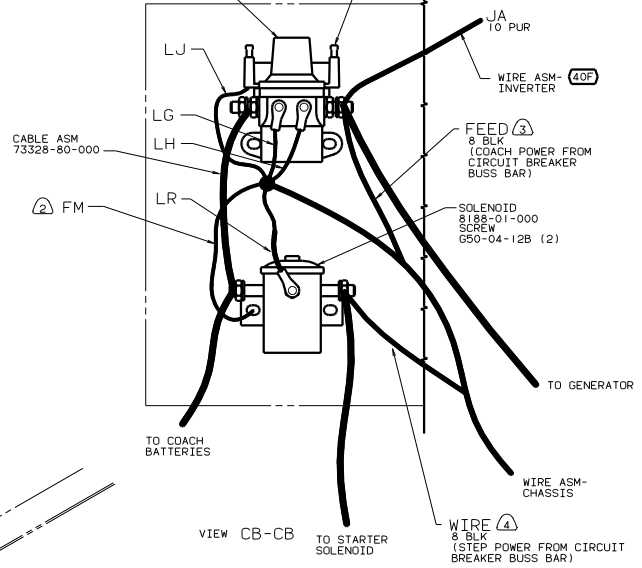
FOR ELECTRICAL TORQUE SPECIFICATIONS SEE DWG NO. 128783-01-000

NOTES:
 (2) LEAD IS MARKED WITH YELLOW TAPE.
 (1) LEAD IS MARKED WITH RED TAPE.

RELAY-BATTERY DISCONNECT
86273-01-000
SCREW
G50-04-12B (2)

FUSE-5 AMP
62901-02-000

132688



KD, MP
TO STEP
DOOR SWITCH

CAP-SCREW
93249-01-000(3)

BOX-CIRCUIT BREAKER
107165-03-CHT
SCREW
G39-10-129 (4)
LABEL
93236-08-000

WIRE ASM-INVERTER, CHASSIS

WIRE ASM-CHASSIS

VIEW CA-CA

- ④ LEAD IS MARKED WITH YELLOW TAPE.
- ③ LEAD IS MARKED WITH RED TAPE.
- ② SECURE WITH SOLENOID MOUNTING SCREW.
- ① LOCATE BOX VERTICALLY BY CENTERING ON MOUNTING PLATE.

NOTES:

FOR ELECTRICAL
TORQUE
SPECIFICATIONS
SEE DWG NO.
128783-01-000

- (40F) INVERTER-DC/AC-130W
- (26B) CODES/STANDARDS-CSA/CMVSS
- (16E) FORD CHASSIS 14,050 LB.GVWR
- (1B1) CODES/STANDARDS USA

(1B1) (16D) (26S) 00 431A

FILE		132688	
WIRING INSTL-CHASSIS (RELAY)		132688	
NO. OF SHEETS	3	SHEET NO.	3