



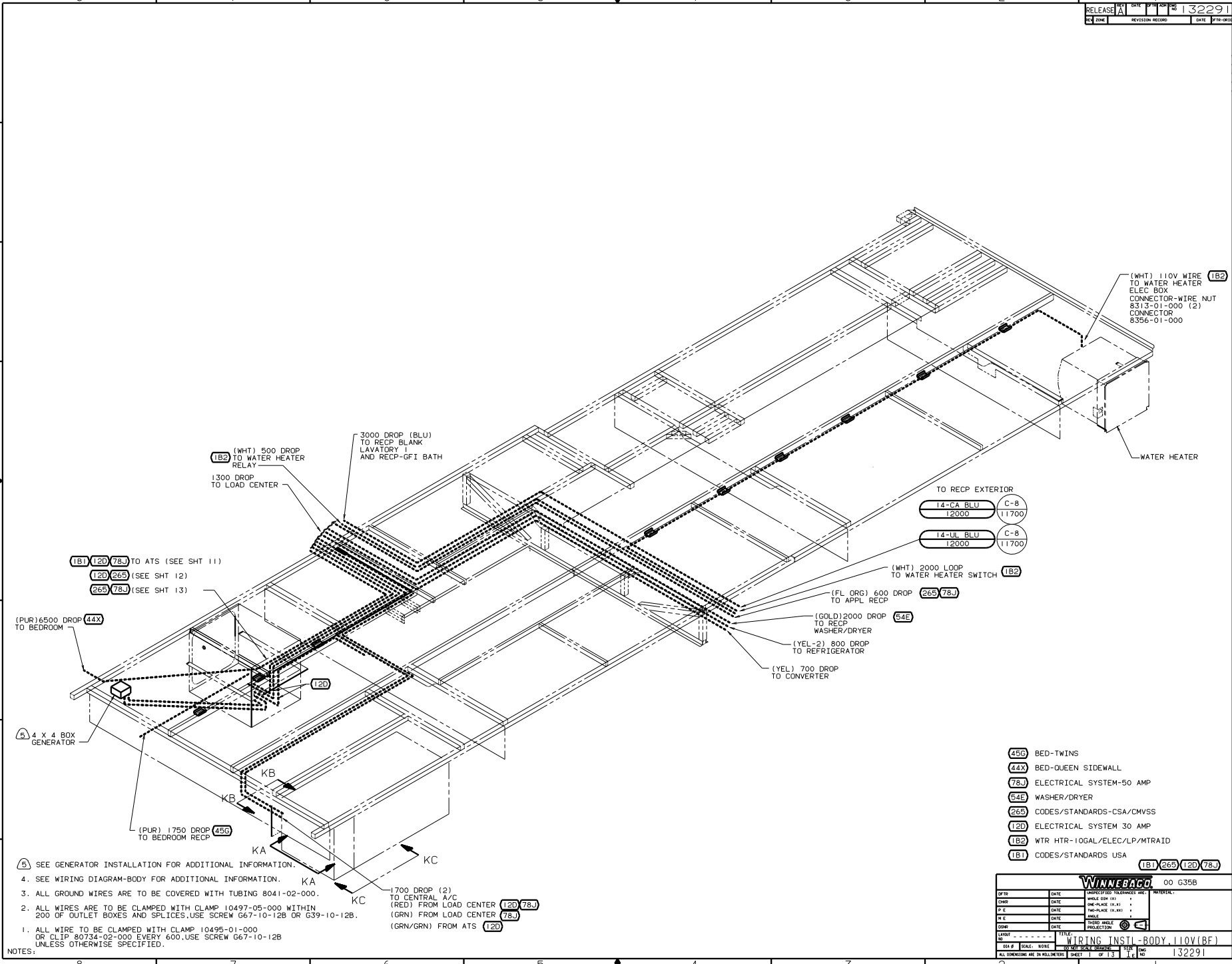
**DANGER**

**Danger of electrical shock, burns or death.** Always remove all power sources before attempting any repair, service or diagnostic work. Power can be present from shore power, generator, inverter or battery. All power sources must be disabled and secured before performing any service.



**CAUTION**

If you lack the skills, tools or equipment to perform diagnostic or repair work leave such work to an authorized Winnebago Industries dealer or other qualified shop.



(1B2) (WHT) 500 DROP TO WATER HEATER RELAY  
 1300 DROP TO LOAD CENTER

3000 DROP (BLU) TO RECP BLANK LAVATORY AND RECP-GFI BATH

(1B1) (12D) (78J) TO ATS (SEE SHT 11)  
 (12D) (26S) (SEE SHT 12)  
 (26S) (78J) (SEE SHT 13)

(PUR) 6500 DROP TO BEDROOM (44X)

5 4 X 4 BOX GENERATOR

(PUR) 1750 DROP TO BEDROOM RECP (45G)

TO RECP EXTERIOR  
 14-CA BLU C-8 11700  
 12000  
 14-LA BLU C-8 11700  
 12000

(WHT) 2000 LOOP TO WATER HEATER SWITCH (1B2)

(FL ORG) 600 DROP TO APPL RECP (26S) (78J)

(GOLD) 2000 DROP TO RECP WASHER/DRYER (54E)

(YEL-2) 800 DROP TO REFRIGERATOR

(YEL) 700 DROP TO CONVERTER

- (45G) BED-TWINS
- (44X) BED-QUEEN SIDEWALL
- (78J) ELECTRICAL SYSTEM-50 AMP
- (54E) WASHER/DRYER
- (26S) CODES/STANDARDS-CSA/CMVSS
- (12D) ELECTRICAL SYSTEM 30 AMP
- (1B2) WTR HTR-10GAL/ELEC/LP/MTR/DAID
- (1B1) CODES/STANDARDS USA

5 SEE GENERATOR INSTALLATION FOR ADDITIONAL INFORMATION.

4. SEE WIRING DIAGRAM-BODY FOR ADDITIONAL INFORMATION.

3. ALL GROUND WIRES ARE TO BE COVERED WITH TUBING 8041-02-000.

2. ALL WIRES ARE TO BE CLAMPED WITH CLAMP 10497-05-000 WITHIN 200 OF OUTLET BOXES AND SPLICES. USE SCREW G67-10-12B OR G39-10-12B.

1. ALL WIRE TO BE CLAMPED WITH CLAMP 10495-01-000 OR CLIP 80734-02-000 EVERY 600. USE SCREW G67-10-12B UNLESS OTHERWISE SPECIFIED.

1700 DROP (2) TO CENTRAL A/C (RED) FROM LOAD CENTER (12D) (78J)  
 (GRN) FROM LOAD CENTER (78J)  
 (GRN/GRN) FROM ATS (12D)

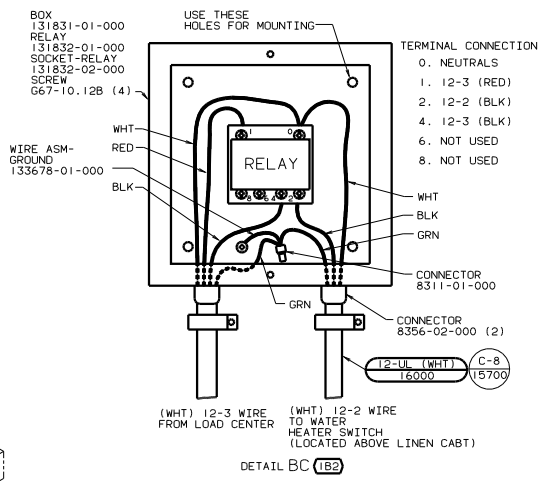
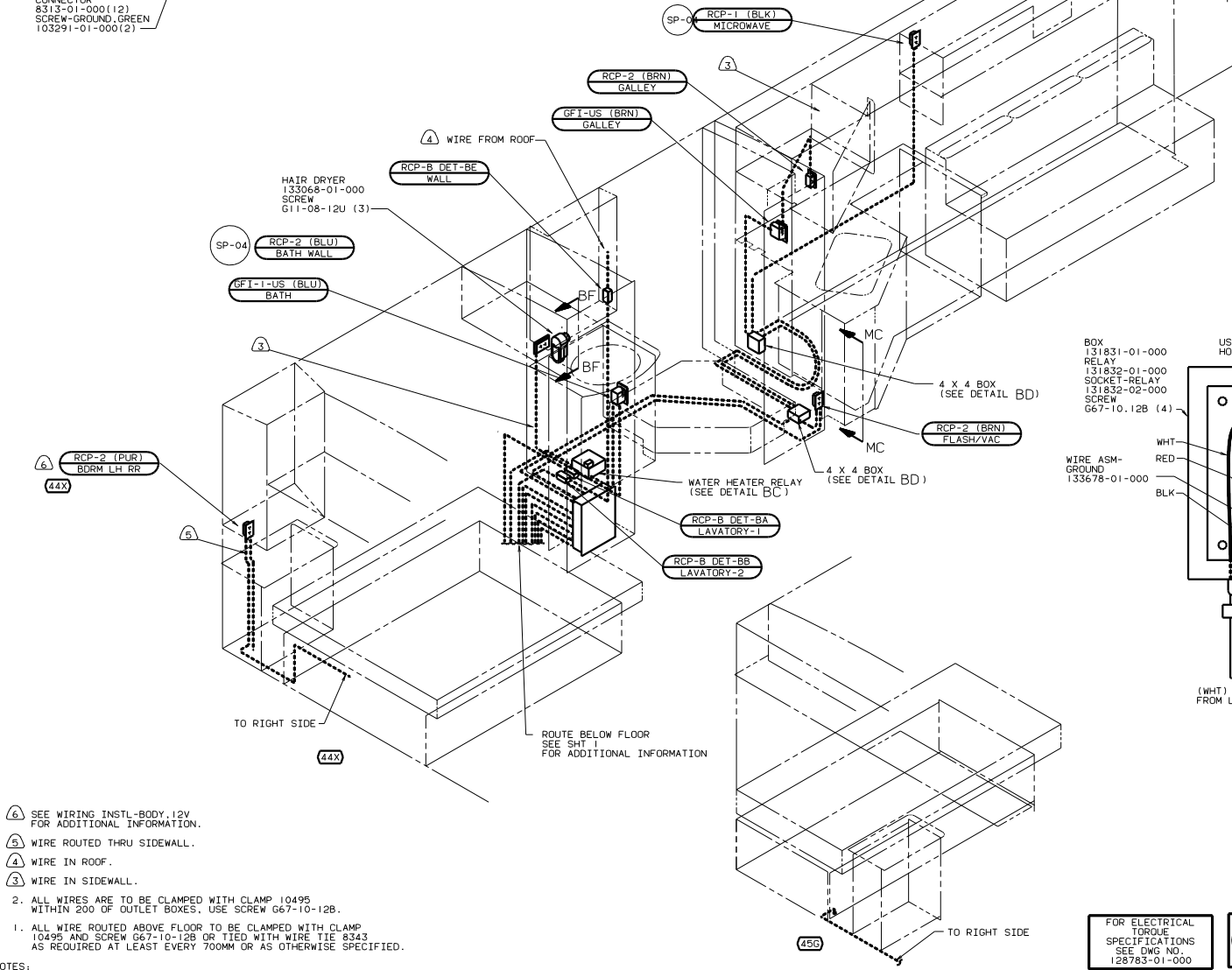
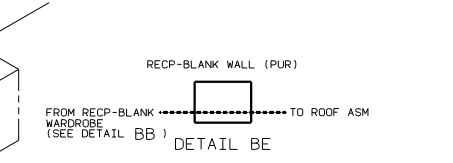
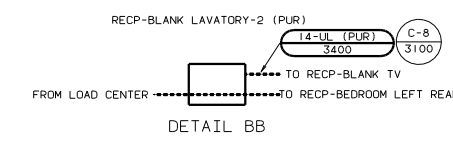
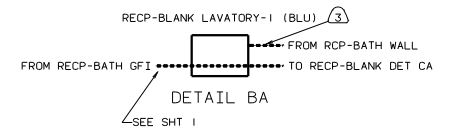
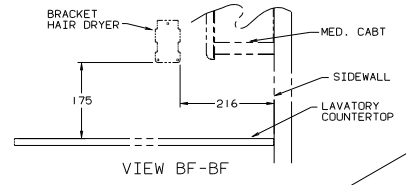
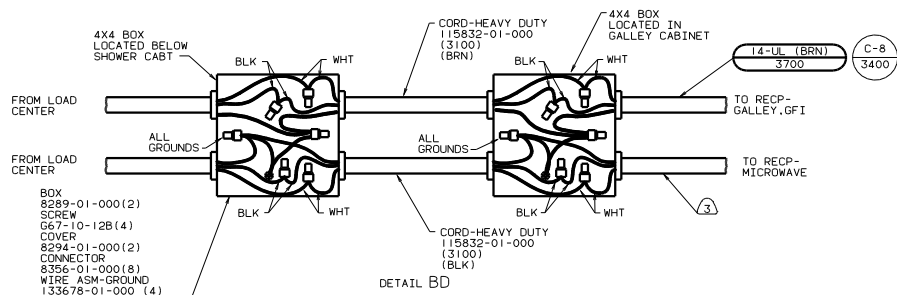
NOTES:

WINNEBAGO 00 G358

DATE	UNDESIGNED TOLERANCES ARE:	MATERIAL
DATE	WHOLE OR 1/16"	
DATE	ONE-PLACE (1/32)"	
DATE	TWO-PLACE (1/64)"	
DATE	THREE-PLACE (1/128)"	
DATE	FOUR-PLACE (1/256)"	
DATE	FIVE-PLACE (1/512)"	
DATE	SIX-PLACE (1/1024)"	
DATE	SEVEN-PLACE (1/2048)"	
DATE	EIGHT-PLACE (1/4096)"	
DATE	NINE-PLACE (1/8192)"	
DATE	TEN-PLACE (1/16384)"	

WIRING INSTL-BODY, 110V(BF)

SCALE: 1/8" = 1'-0" ALL DIMENSIONS ARE IN MILLIMETERS SHEET 1 OF 13 132291



- 6 SEE WIRING INSTL-BODY, 12V FOR ADDITIONAL INFORMATION.
- 5 WIRE ROUTED THRU SIDEWALL.
- 4 WIRE IN ROOF.
- 3 WIRE IN SIDEWALL.
2. ALL WIRES ARE TO BE CLAMPED WITH CLAMP 10495 WITHIN 200 OF OUTLET BOXES, USE SCREW 667-10-12B.
1. ALL WIRE ROUTED ABOVE FLOOR TO BE CLAMPED WITH CLAMP 10495 AND SCREW 667-10-12B OR TIED WITH WIRE TIE 8343 AS REQUIRED AT LEAST EVERY 700MM OR AS OTHERWISE SPECIFIED.

- 45G BED-TWINS
- 1B2 WTR HTR-10GAL/ELEC/LP/MTR/AID
- 09L SLIDEOUT ROOM FRONT LEFT
- 44X SIDEWALL
- 1E3 ENERGY MANAGEMENT SYSTEM
- 78J ELECTRICAL SYSTEM-50 AMP
- 12D ELECTRICAL SYSTEM 30 AMP
- 1B1 CODES/STANDARDS USA

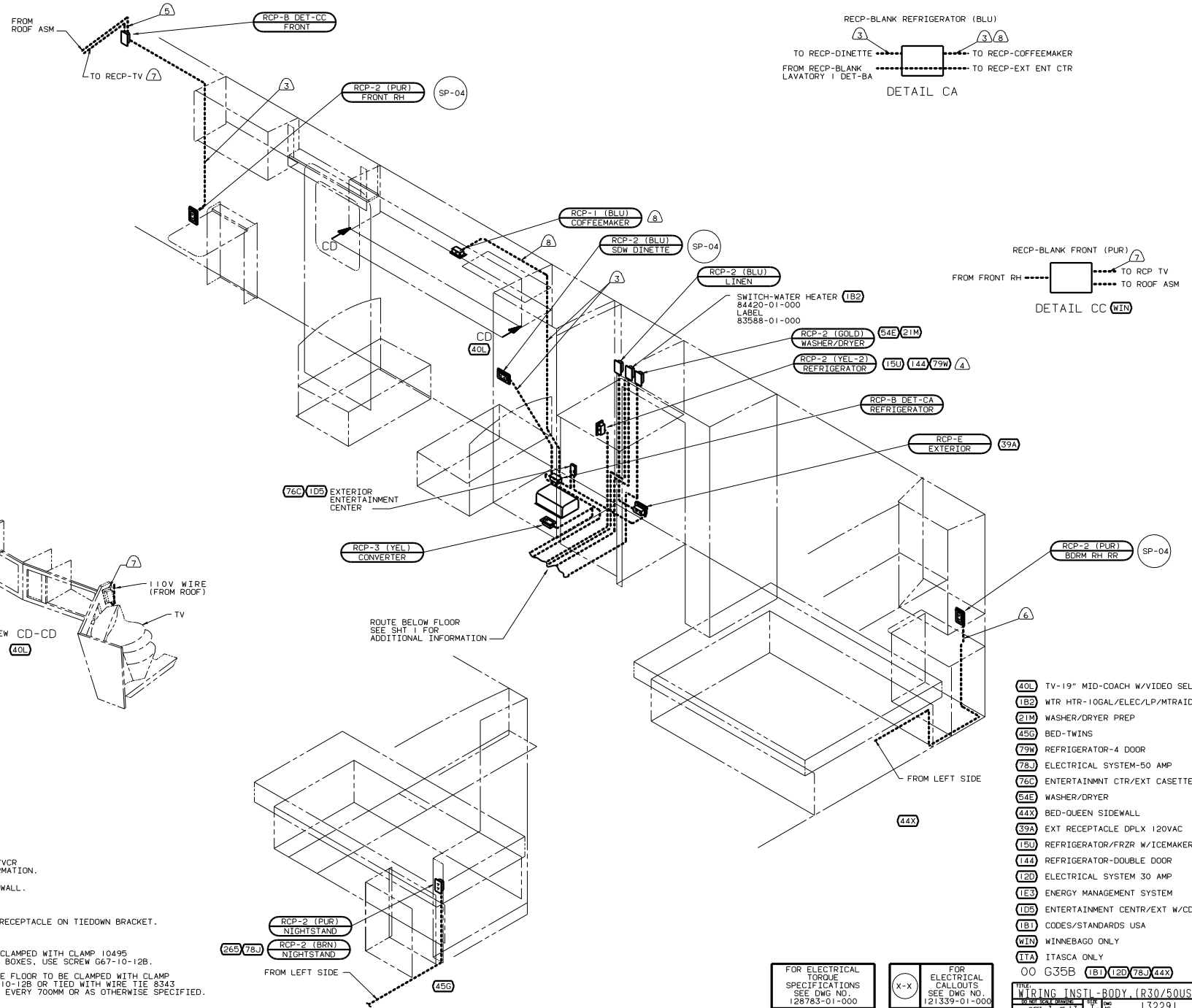
FOR ELECTRICAL TORQUE SPECIFICATIONS SEE DWG NO. 128783-01-000

FOR ELECTRICAL CALLOUTS SEE DWG NO. 121339-01-000

00 G35B 1B1 12D 78J 44X

WIRING INSTL-BODY (130/50US)

132291



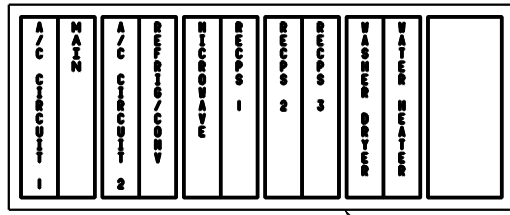
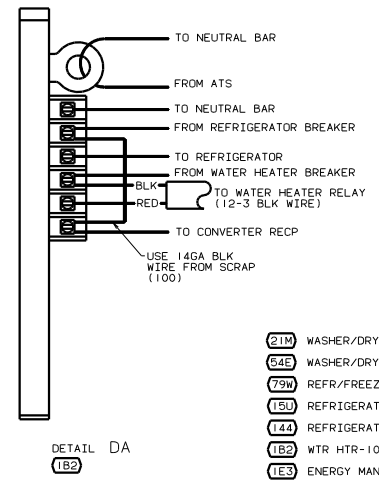
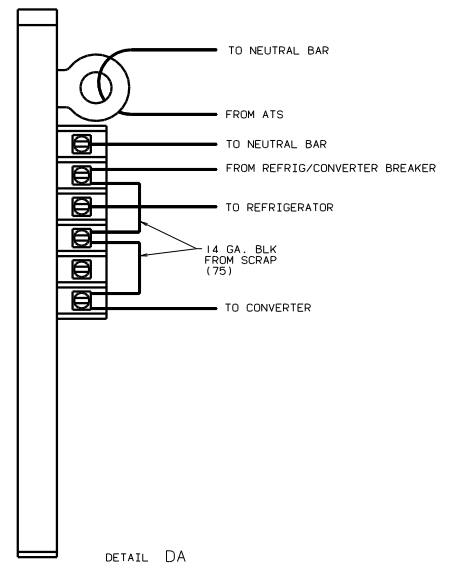
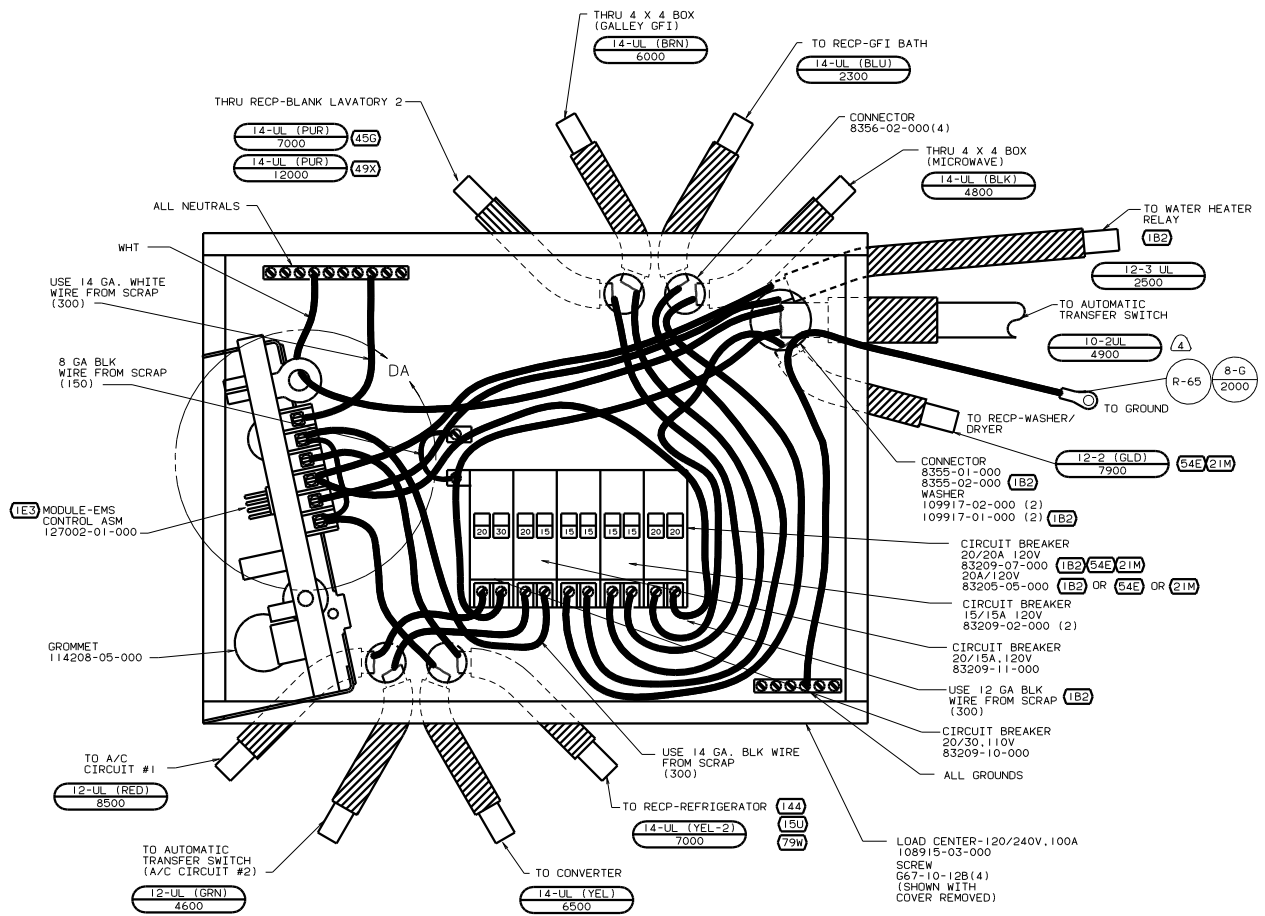
FOR ELECTRICAL TORQUE SPECIFICATIONS SEE DWG NO. 128783-01-000

FOR ELECTRICAL CALLOUTS SEE DWG NO. 121339-01-000

WIRING INSTL-BODY (R30/50US)  
 SHEET 3 OF 13  
 132291

- 8) NOT USED WITH 40L
  - 7) SEE WIRING INSTL-TV/VCR FOR ADDITIONAL INFORMATION.
  - 6) ROUTE WIRE THRU SIDEWALL.
  - 5) WIRE IN ROOF.
  - 4) LOCATE REFRIGERATOR RECEPTACLE ON TIEDOWN BRACKET.
  - 3) WIRE IN SIDEWALL.
1. ALL WIRES ARE TO BE CLAMPED WITH CLAMP 10495 AND SCREW 667-10-128 OR TIED WITH WIRE TIE 8343 AS REQUIRED AT LEAST EVERY 700MM OR AS OTHERWISE SPECIFIED.
  2. ALL WIRES ARE TO BE CLAMPED WITH CLAMP 10495 AND SCREW 667-10-128 OR TIED WITH WIRE TIE 8343 AS REQUIRED AT LEAST EVERY 700MM OR AS OTHERWISE SPECIFIED.

NOTES:

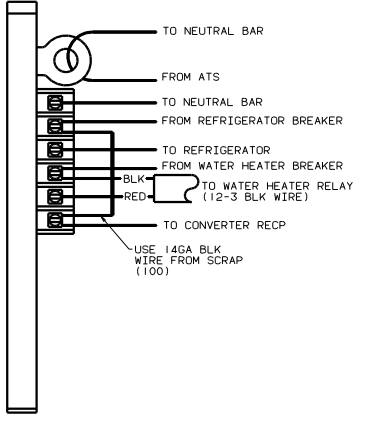
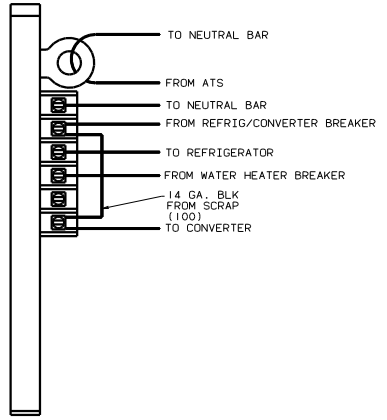
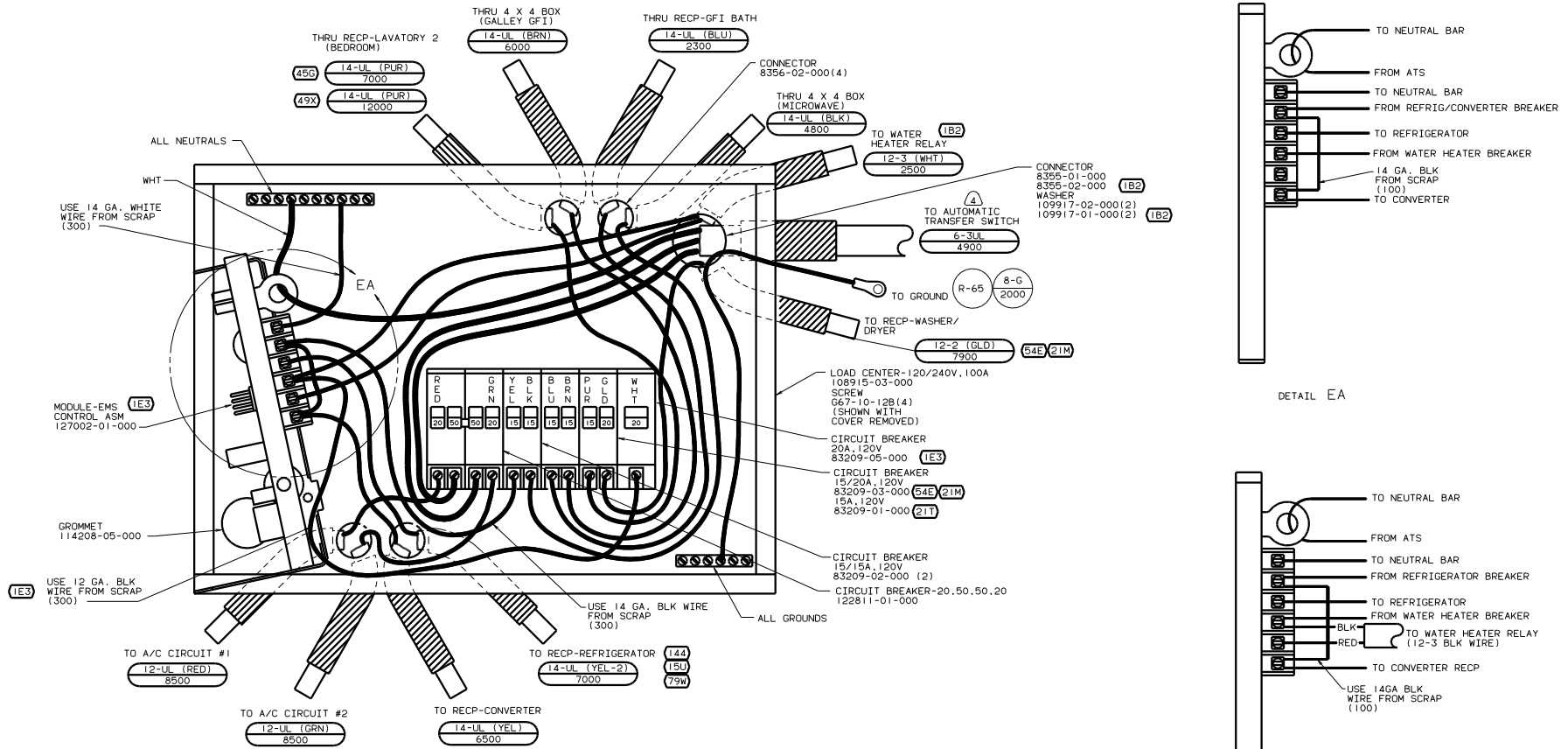


4. WIRE MUST BE 600 LONG INSIDE BOX. ALL OTHERS TO BE 300.
3. ALL CABLES SHALL BE COVERED WITH CONDUIT-CONVOLUTE, SLIT 41953-01-000 UNLESS OTHERWISE SPECIFIED. 600 LESS THAN CABLE LENGTH.
2. ATTACH WIRES TO BACKSIDE OF LOAD CENTER. USE EXISTING HOLES AND TIE-WIRE 116673-01-000.
1. ALL GROUND WIRES TO BE COVERED WITH TUBING 8041-02-000.

- (21M) WASHER/DRYER PREP
- (54E) WASHER/DRYER
- (79W) REFR/FREEZER-FOUR DOOR W/ICE
- (15U) REFRIGERATOR/FRZR W/ICEMAKER
- (144) REFRIGERATOR-DOUBLE DOOR
- (1B2) WTR HTR-10GAL/ELEC/LP/MTR/RAID
- (1E3) ENERGY MANAGEMENT SYSTEM
- (120) ELECTRICAL SYSTEM 30 AMP
- (1B1) CODES/STANDARDS USA

FOR ELECTRICAL TORQUE SPECIFICATIONS SEE DWG NO. 128783-01-000

FOR ELECTRICAL CALLOUTS SEE DWG NO. 121339-01-000



A/C CIRCUIT #1	WATER	WASHER/DRYER	REFRIG/CONV	REFRIG 1	REFRIG 2	REFRIG 3	REFRIG 4	REFRIG 5	REFRIG 6	REFRIG 7	REFRIG 8	REFRIG 9	REFRIG 10	REFRIG 11	REFRIG 12	REFRIG 13	REFRIG 14	REFRIG 15	REFRIG 16	REFRIG 17	REFRIG 18	REFRIG 19	REFRIG 20
----------------	-------	--------------	-------------	----------	----------	----------	----------	----------	----------	----------	----------	----------	-----------	-----------	-----------	-----------	-----------	-----------	-----------	-----------	-----------	-----------	-----------

4. WIRE MUST BE 600 LONG INSIDE BOX, ALL OTHERS TO BE 300.
3. ALL CABLES SHALL BE COVERED WITH CONDUIT-CONVOLUTE, SLIT 41953-01-000 UNLESS OTHERWISE SPECIFIED. 600 LESS THAN CABLE LENGTH.
2. ATTACH WIRES TO BACKSIDE OF LOAD CENTER. USE EXISTING HOLES AND TIE-WIRE 116673-01-000.
1. ALL GROUND WIRES TO BE COVERED WITH TUBING 8041-02-000.

INSTALL LABEL ON FRONT PANEL BELOW BREAKERS BETWEEN MOUNTING HOLES

LABEL 95721-33-000

- (21M) WASHER/DRYER PREP
- (49X) BED-QUEEN - BACKWALL
- (45G) BED-TWINS
- (211) WASHER/DRYER-WITHOUT
- (64E) WASHER/DRYER
- (1B2) WTR HTR-10GAL/ELEC/LP/MTR/DAID
- (79W) REFR/FREEZER-FOUR DR W/ICEMAKER
- (15U) REFRIGERATOR/FRZR W/ICEMAKER
- (144) REFRIGERATOR-DOUBLE DOOR
- (1E3) ENERGY MANAGEMENT SYSTEM
- (78J) ELECTRICAL SYSTEM-50 AMP
- (1B1) CODES/STANDARDS USA

FOR ELECTRICAL TORQUE SPECIFICATIONS SEE DWG NO. 128783-01-000

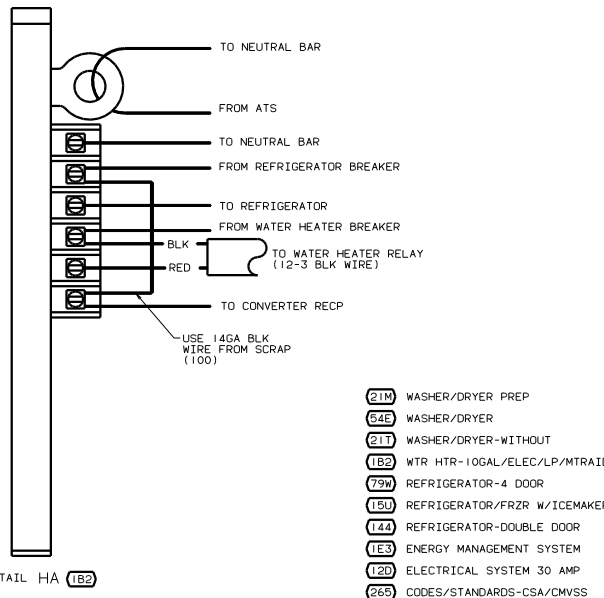
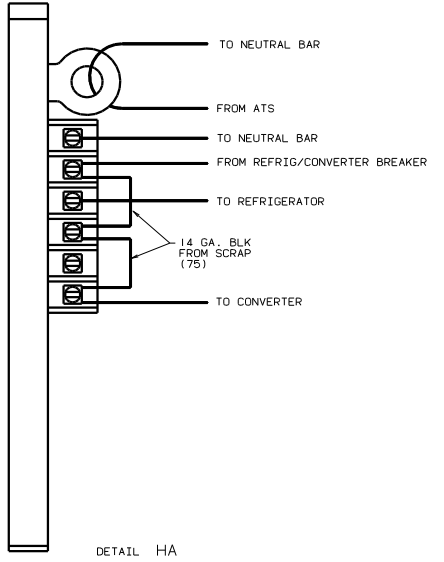
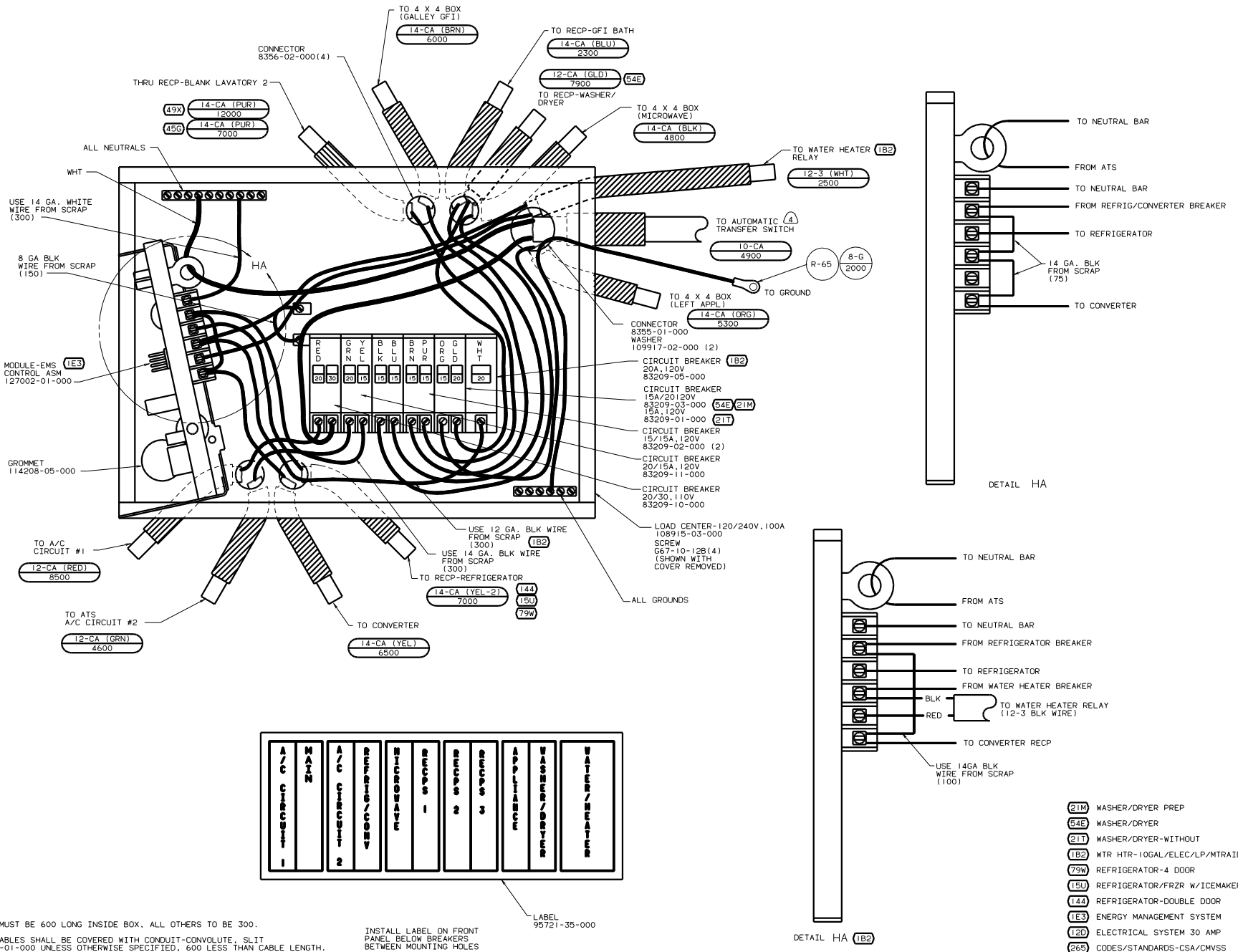
FOR ELECTRICAL CALLOUTS SEE DWG NO. 121339-01-000

00 G35B (1B1) (1E3) (78J)  
 WIRING INSTL-BODY, 110V (LC50US)  
 SHEET 5 OF 13









A/C CIRCUIT 1	WTR HTR	A/C CIRCUIT 2	REFRIG/CONV	REFRIGERATE	REFRIG 1	REFRIG 2	REFRIG 3	APPLIANCE	WASHER/DRYER	WATER/HEATER
---------------	---------	---------------	-------------	-------------	----------	----------	----------	-----------	--------------	--------------

LABEL 95721-35-000

INSTALL LABEL ON FRONT PANEL BELOW BREAKERS BETWEEN MOUNTING HOLES

4. WIRE MUST BE 600 LONG INSIDE BOX. ALL OTHERS TO BE 300.
3. ALL CABLES SHALL BE COVERED WITH CONDUIT-CONVOLUTE, SLIT 41953-01-000 UNLESS OTHERWISE SPECIFIED. 600 LESS THAN CABLE LENGTH.
2. ATTACH WIRES TO BACKSIDE OF LOAD CENTER. USE EXISTING HOLES AND TIE-WIRE 116673-01-000.
1. ALL GROUND WIRES TO BE COVERED WITH TUBING 8041-02-000.

- (21M) WASHER/DRYER PREP
- (64E) WASHER/DRYER
- (21T) WASHER/DRYER-WITHOUT
- (182) WTR HTR-10GAL/ELEC/LP/MTR/RAID
- (79W) REFRIGERATOR-4 DOOR
- (15U) REFRIGERATOR/FRZR W/ICEMAKER
- (144) REFRIGERATOR-DOUBLE DOOR
- (1E3) ENERGY MANAGEMENT SYSTEM
- (12D) ELECTRICAL SYSTEM 30 AMP
- (265) CODES/STANDARDS-CSA/CMVSS

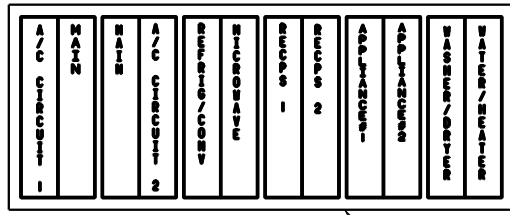
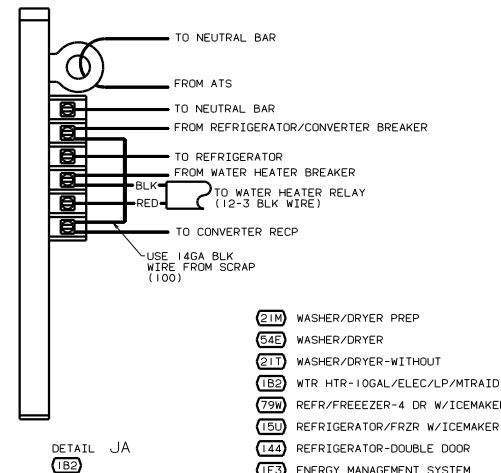
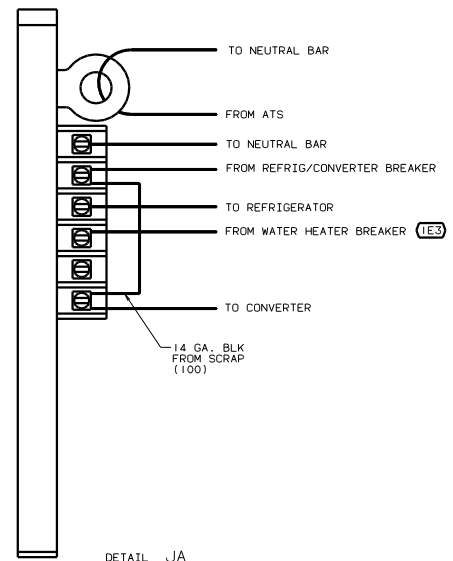
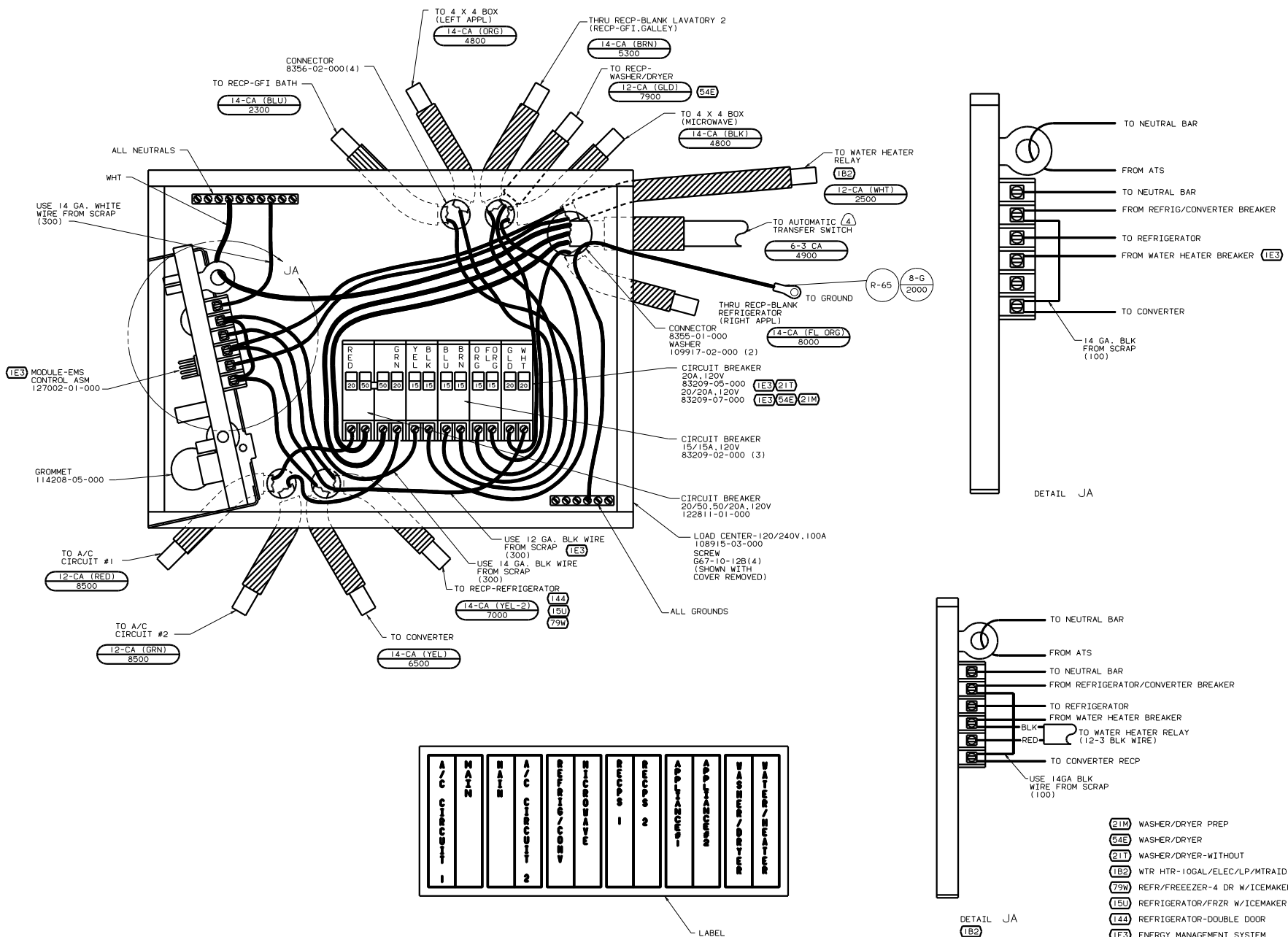
FOR ELECTRICAL TORQUE SPECIFICATIONS SEE DWG NO. 128783-01-000

FOR ELECTRICAL CALLOUTS SEE DWG NO. 121339-01-000

00 G35B (12D) (265)

WIRING INSTL-BODY, 110V(LC30CA)

132291



LABEL 95721-36-000

INSTALL LABEL ON FRONT PANEL BELOW BREAKERS BETWEEN MOUNTING HOLES

- 1. ALL GROUND WIRES TO BE COVERED WITH TUBING 8041-02-000.
- 2. ATTACH WIRES TO BACKSIDE OF LOAD CENTER. USE EXISTING HOLES AND TIE-WIRE 116673-01-000.
- 3. ALL CABLES SHALL BE COVERED WITH CONDUIT-CONVOLUTE, SLIT 41953-01-000 UNLESS OTHERWISE SPECIFIED. 600 LESS THAN CABLE LENGTH.
- 4. WIRE MUST BE 600 LONG INSIDE BOX, ALL OTHERS TO BE 300.

- (21M) WASHER/DRYER PREP
- (54E) WASHER/DRYER
- (21T) WASHER/DRYER-WITHOUT
- (1B2) WTR HTR-10GAL/ELEC/LP/MTRAITD
- (79U) REFR/FREEZER-4 DR W/ICEMAKER
- (15U) REFRIGERATOR/FRZR W/ICEMAKER
- (144) REFRIGERATOR-DOUBLE DOOR
- (1E3) ENERGY MANAGEMENT SYSTEM
- (78J) ELECTRICAL SYSTEM-50 AMP
- (26S) CODES/STANDARDS-CSA/CMVSS

FOR ELECTRICAL TORQUE SPECIFICATIONS SEE DWG NO. 128783-01-000

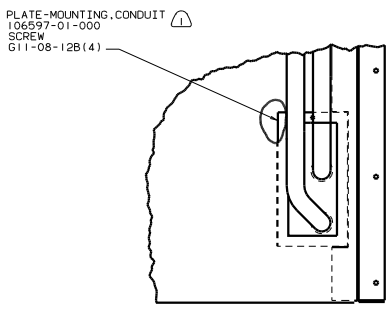
FOR ELECTRICAL CALLOUTS SEE DWG NO. 121339-01-000

WIRING INSTL-BODY (LC50CA)

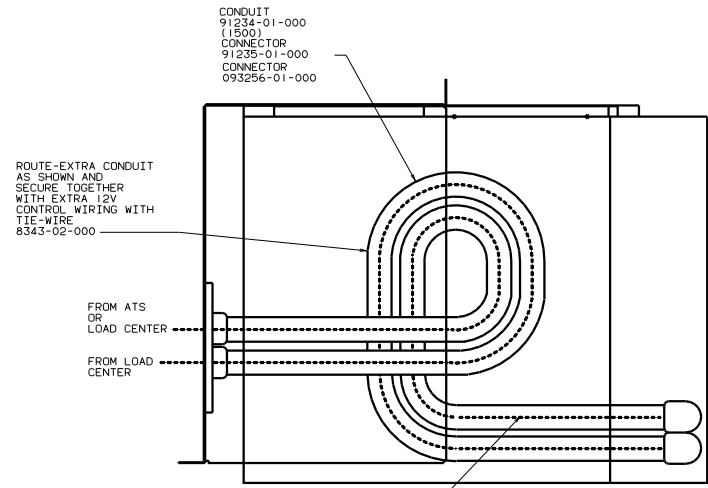
00 G35B (26S) (78J)

FOR ELECTRICAL CALLOUTS SEE DWG NO. 121339-01-000

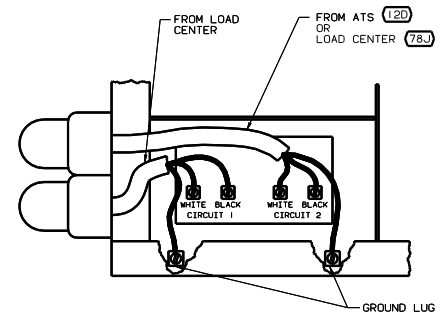
132291



VIEW KB-KB



VIEW KA-KA



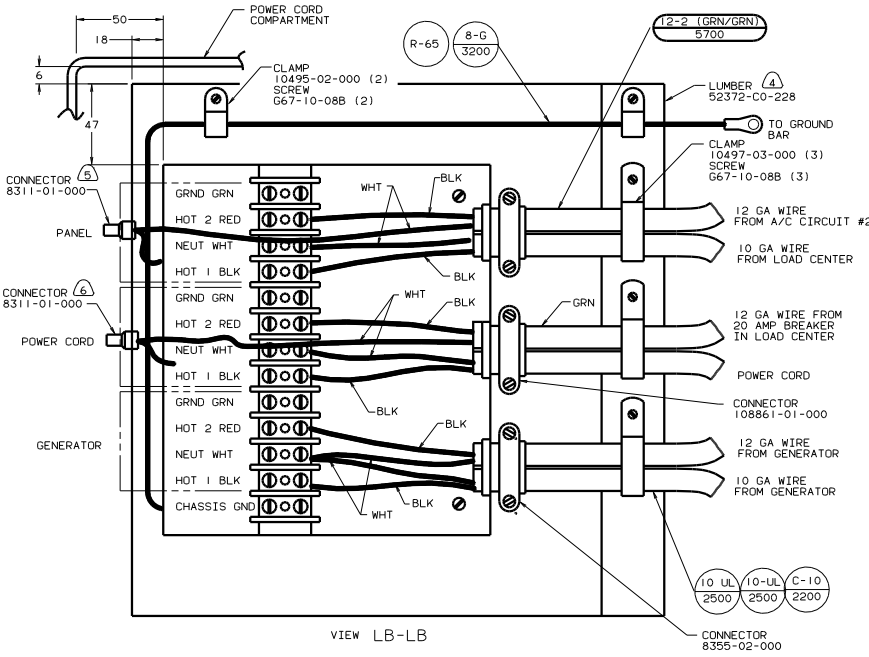
VIEW KC-KC

NOTES:  
1 SEAL EDGES.

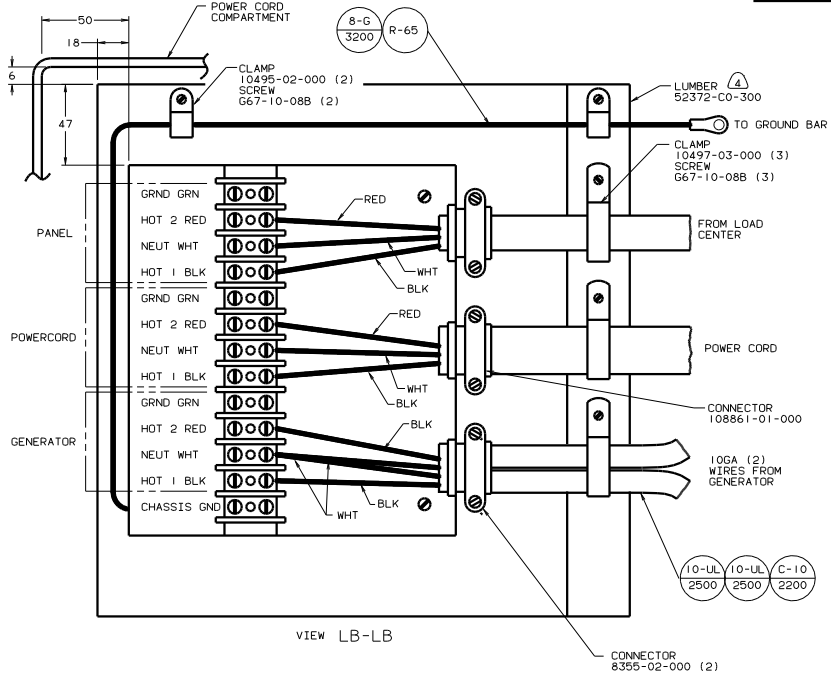
- (78J) ELECTRICAL SYSTEM-50 AMP
- (120) ELECTRICAL SYSTEM 30 AMP
- (265) CODES/STANDARDS-CSA/CMVSS
- (181) CODES/STANDARDS USA

00 G35B (181) (265) (120) (78J)

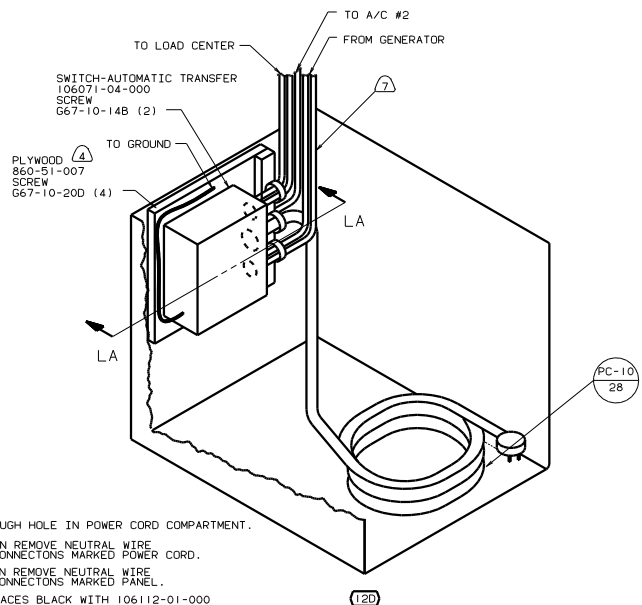
TITLE		WIRING INSTL-BODY, 110V(A/C)	
NO. 20	REV. 04/24/2016	FIG. NO.	1
SHEET 10 OF 13		132291	



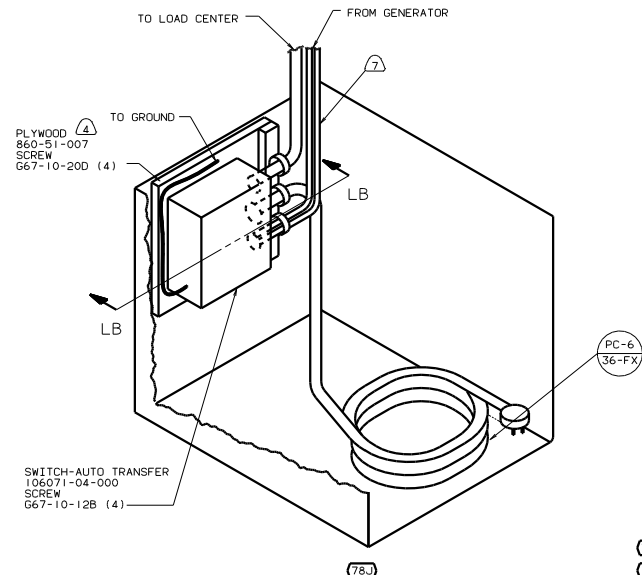
VIEW LB-LB



VIEW LB-LB



(12D)



(78J)

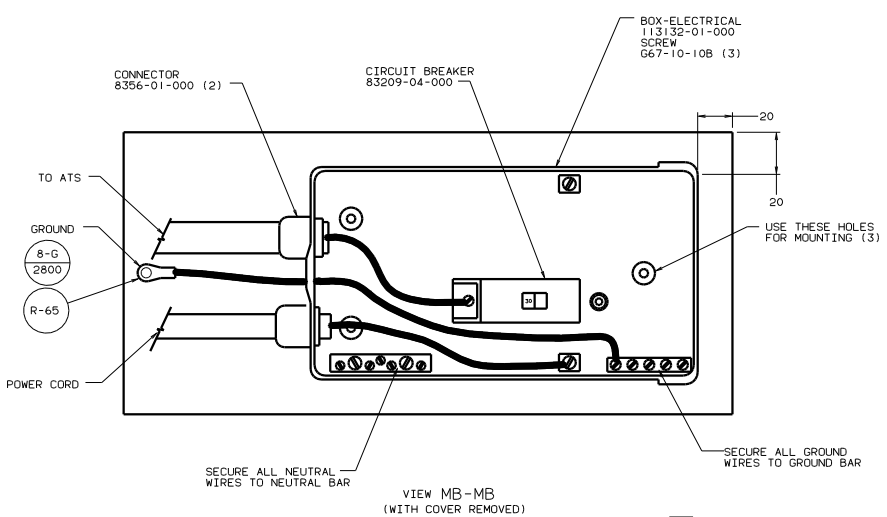
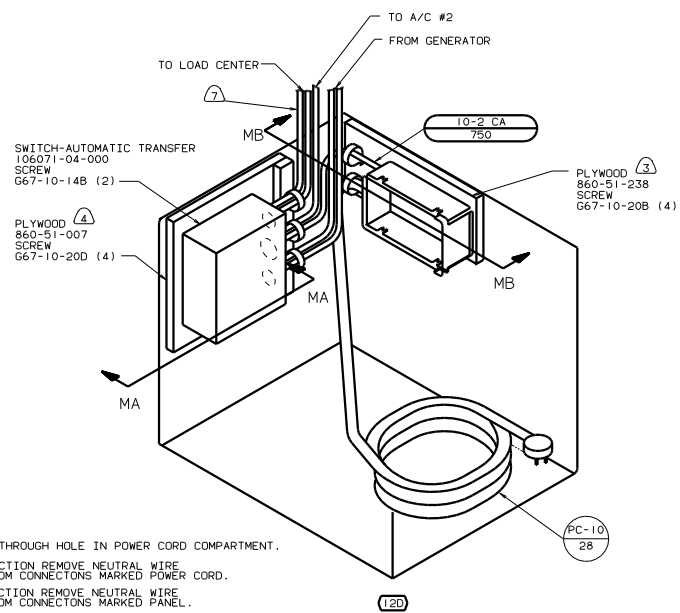
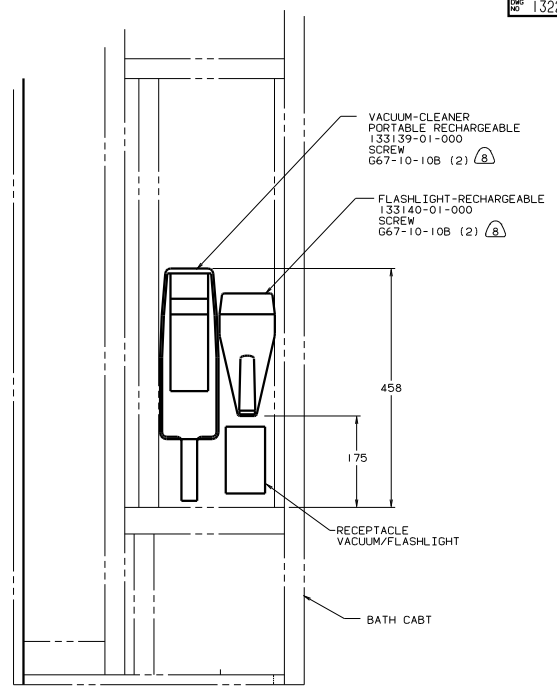
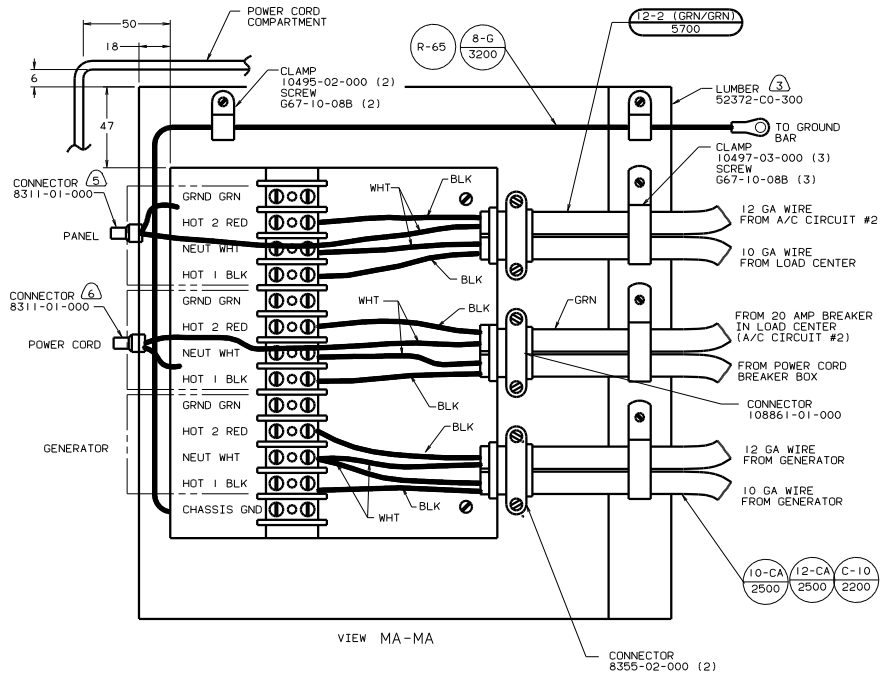
- (7) WIRES TO PASS THROUGH HOLE IN POWER CORD COMPARTMENT.
- (6) FOR THIS CONNECTION REMOVE NEUTRAL WIRE MARKED BLUE FROM CONNECTIONS MARKED POWER CORD.
- (5) FOR THIS CONNECTION REMOVE NEUTRAL WIRE MARKED BLUE FROM CONNECTIONS MARKED PANEL.
- (4) PAINT EXPOSED SURFACES BLACK WITH 106112-01-000
- 3. ALL 110V STRANDED WIRE W/O TERMINALS TO BE STRIPPED 10MM AND SOLDER DIPPED.
- 2. GROUND WIRES NOT SHOWN FOR CLARITY.
- 1. ALL WIRES TO BE CLAMPED WITHIN 200 OF BOX.

NOTES:

- (78J) ELECTRICAL SYSTEM-50 AMP
- (12D) ELECTRICAL SYSTEM 30 AMP
- (1B1) CODES/STANDARDS USA

FOR ELECTRICAL CALLOUTS SEE DWG NO. 121339-01-000

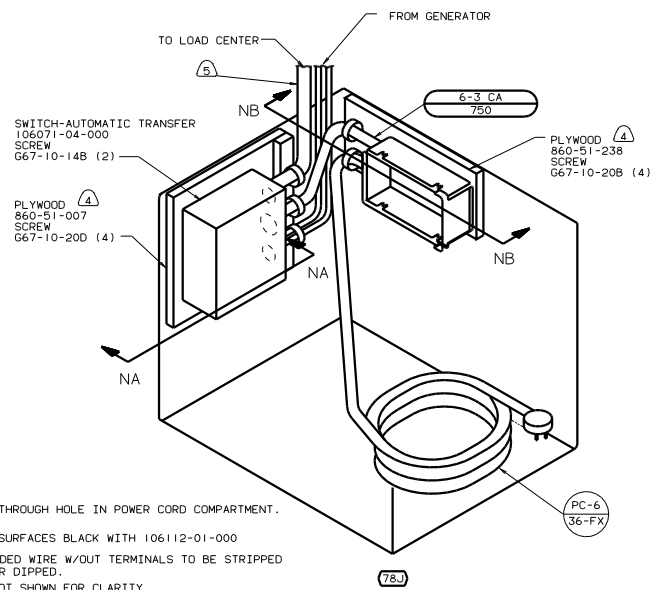
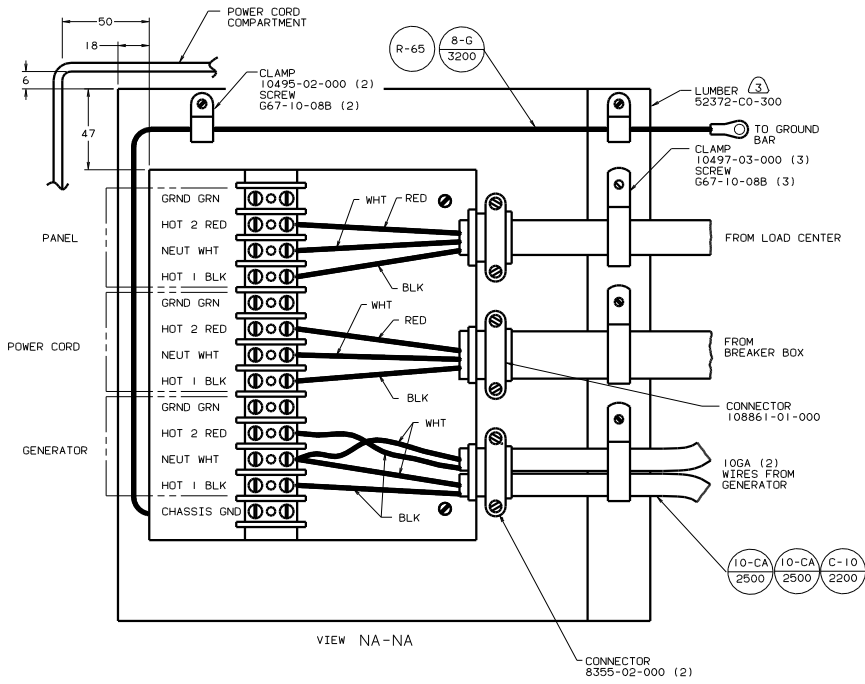
00 G35B (1B1) (12D) (78J)  
 WIRING INSTL-BODY (30/50ATSUS)  
 SHEET 11 OF 13



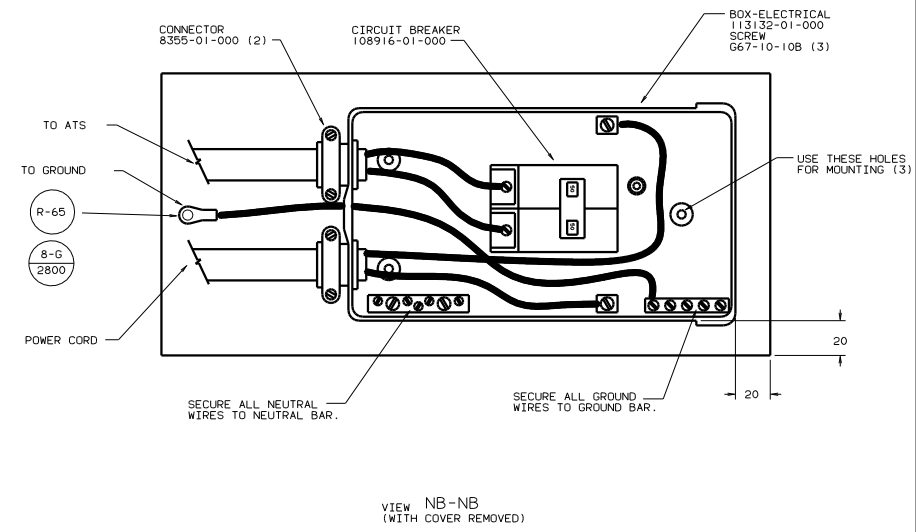
- NOTES:
1. ALL WIRES TO BE CLAMPED WITHIN 200 OF BOX.
  2. GROUND WIRES NOT SHOWN FOR CLARITY.
  3. ALL 110V STRANDED WIRE W/O TERMINALS TO BE STRIPPED 10MM AND SOLDER DIPPED.
  4. PAINT EXPOSED SURFACES BLACK WITH 106112-01-000
  5. FOR THIS CONNECTION REMOVE NEUTRAL WIRE MARKED BLUE FROM CONNECTIONS MARKED PANEL.
  6. FOR THIS CONNECTION REMOVE NEUTRAL WIRE MARKED BLUE FROM CONNECTIONS MARKED POWER CORD.
  7. WIRES TO PASS THROUGH HOLE IN POWER CORD COMPARTMENT.

FOR ELECTRICAL CALLOUTS SEE DWG NO. 121339-01-000

265 CODES/STANDARDS-CSA/CMVSS  
 120 ELECTRICAL SYSTEM 30 AMP  
 00 G35B 265 120  
 TITLE: WIRING INSTL-BODY (30AITSCA)  
 SHEET 12 OF 13



- (5) WIRES TO PASS THROUGH HOLE IN POWER CORD COMPARTMENT.
- (4) PAINT EXPOSED SURFACES BLACK WITH 106112-01-000
3. ALL 110V STRANDED WIRE W/OUT TERMINALS TO BE STRIPPED 10MM AND SOLDER DIPPED.
2. GROUND WIRES NOT SHOWN FOR CLARITY.
1. ALL WIRES TO BE CLAMPED WITHIN 200 OF BOX.



FOR ELECTRICAL CALLOUTS SEE DWG NO. 121339-01-000

(78J) ELECTRICAL SYSTEM-50 AMP  
 (265) CODES/STANDARDS-CSA/CMVSS  
 00 G35B (265) (78J)  
 TITLE: WIRING INSTL-BODY (50A/SCA)  
 10-20-2000-0000 1.6  
 SHEET 13 OF 13 132291