



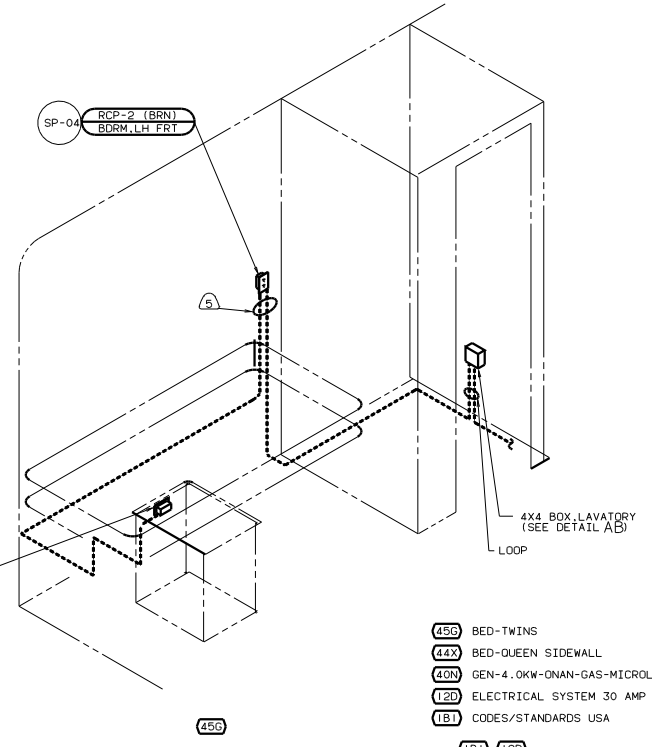
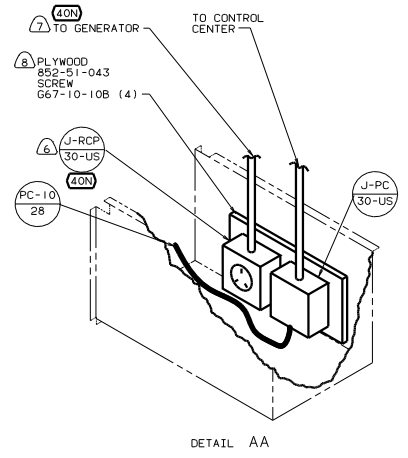
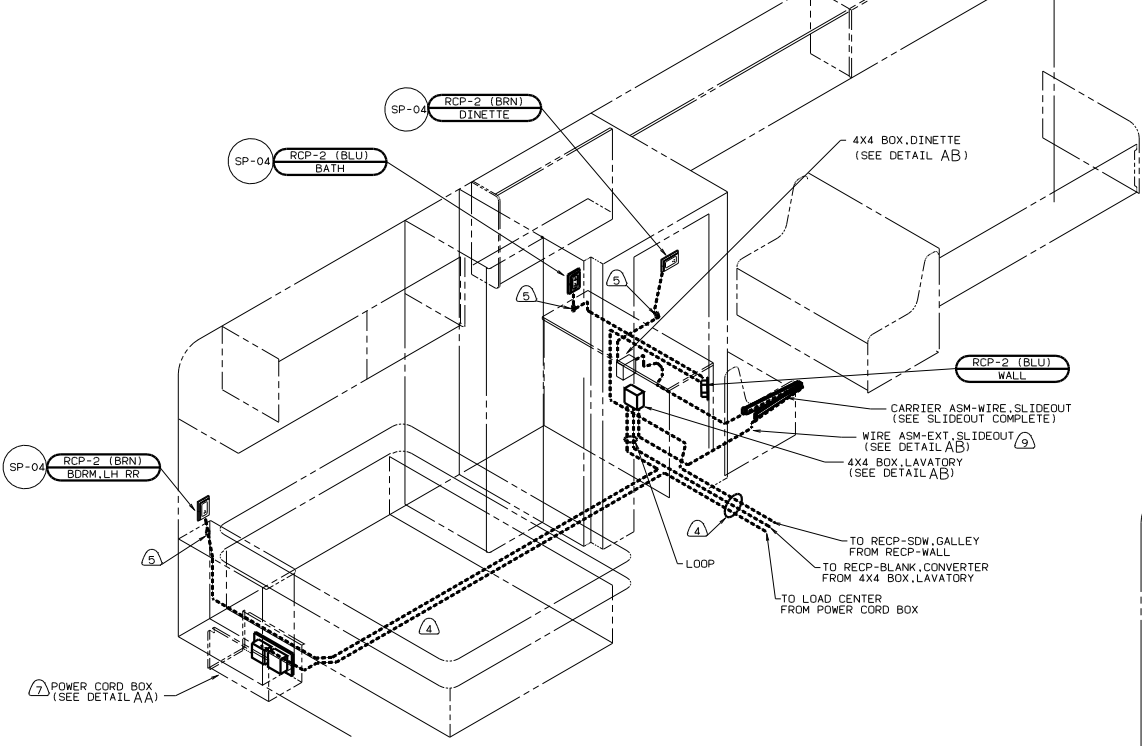
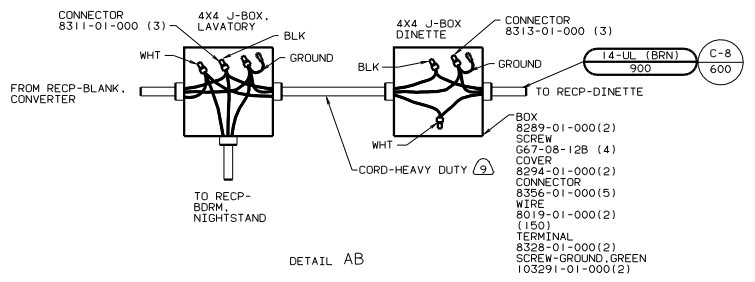
DANGER

Danger of electrical shock, burns or death. Always remove all power sources before attempting any repair, service or diagnostic work. Power can be present from shore power, generator, inverter or battery. All power sources must be disabled and secured before performing any service.



CAUTION

If you lack the skills, tools or equipment to perform diagnostic or repair work leave such work to an authorized Winnebago Industries dealer or other qualified shop.

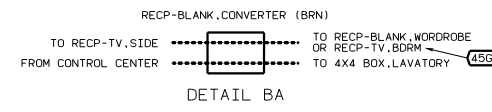
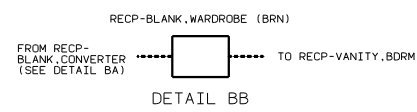
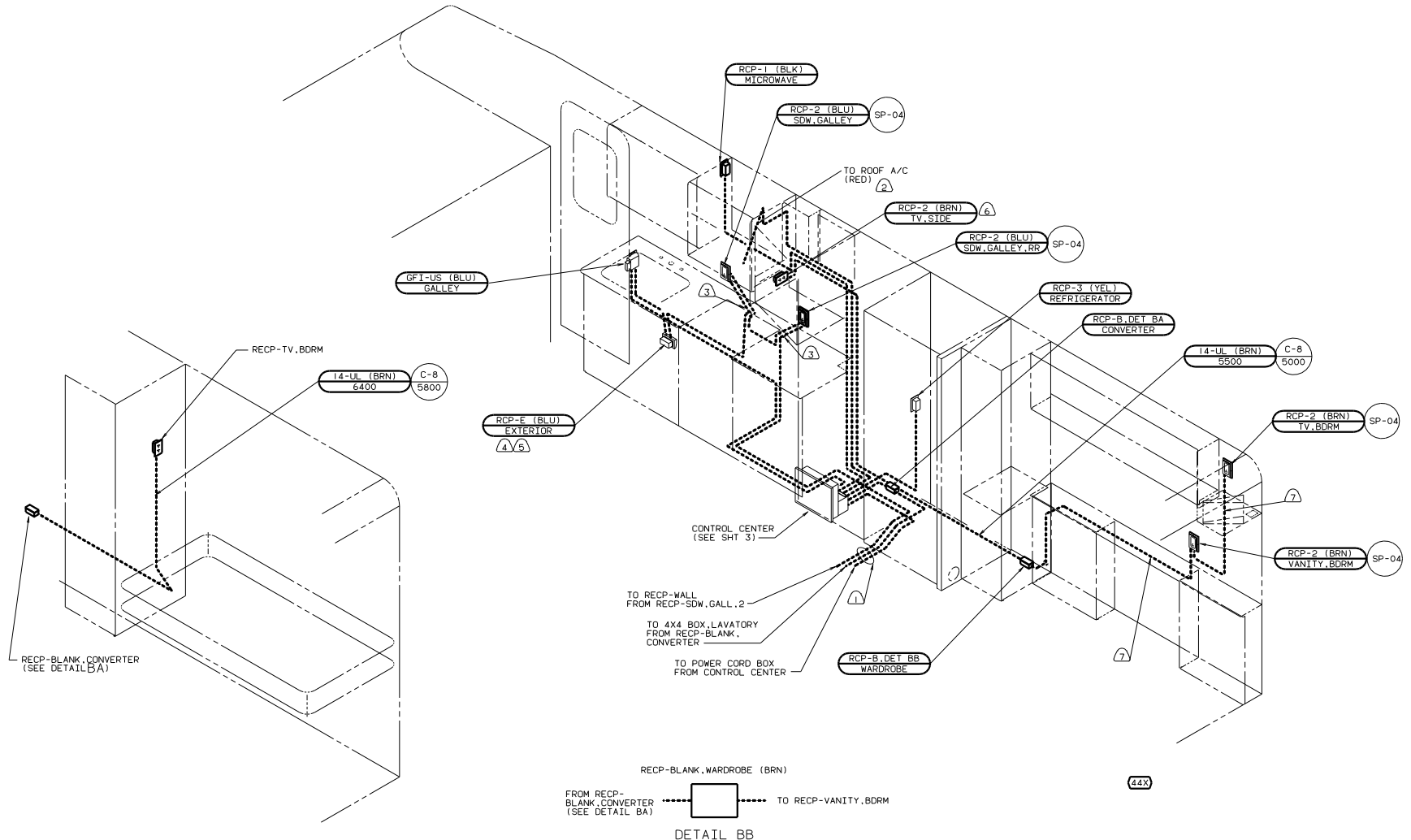


- ① CORD IS PART OF WIRE ASM-EXT, SLIDEOUT CALLED OUT ON WIRING INSTL-BODY.12V.
 - ② PAINT EXPOSED SURFACES BLACK WITH 106112-01-000.
 - ③ SEE GENERATOR INSTL FOR ADDITIONAL INFORMATION.
 - ④ INSTALL RECEPTACLE WITH GROUND TOWARD OUTBOARD SIDE OF VEHICLE.
 - ⑤ ROUTE WIRE THRU SIDEWALL.
 - ⑥ ROUTE WIRE THRU FLOOR.
3. ALL GROUND WIRES TO BE COVERED WITH TUBING 8041-02-000.
2. ALL 110V WIRES ARE TO BE CLAMPED WITH CLAMP 10497-01-000 WITHIN 200 OF OUTLET BOXES. USE SCREW 667-10-12B.
1. ALL WIRES TO BE CLAMPED WITH CLAMP 10495-01-000 OR CLIP 80734-01-000 EVERY 600. USE SCREW 667-10-12B UNLESS OTHERWISE SPECIFIED.

- ④5G BED-TWINS
- ④4X BED-QUEEN SIDEWALL
- ④0N GEN-4.0KW-ONAN-GAS-MICROLITE
- ①2D ELECTRICAL SYSTEM 30 AMP
- ①B1 CODES/STANDARDS USA
- ①B1 ①2D

DATE		UNSPECIFIED TOLERANCES ARE:		MATERIAL	
OF IN	DATE	WHOLE DIM (IN)	+		
OMP	DATE	ONE-PLACE (IN)	.		
PIE	DATE	TWO-PLACE (IN)	0		
DE	DATE	THREE-PLACE (IN)	00		
CONP	DATE	THREE-PLACE (IN)	000		
LANST	DATE	TITLE			
WIRING INSTL-BODY.110(L30US)					
DWG NO	SCALE	NO OF SHEETS	SHEET	OF	TOTL SHEETS
128783-01-000		1	7	7	7

FOR ELECTRICAL TORQUE SPECIFICATIONS SEE DWG NO 128783-01-000	(X-X)	FOR ELECTRICAL CALLOUTS SEE DWG NO 121339-01-000
---	-------	--

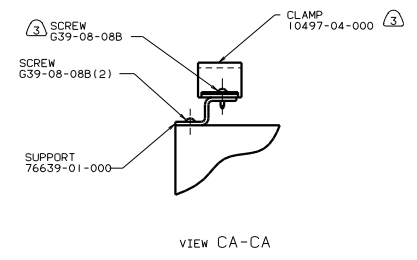
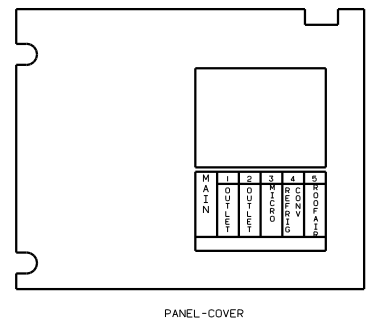
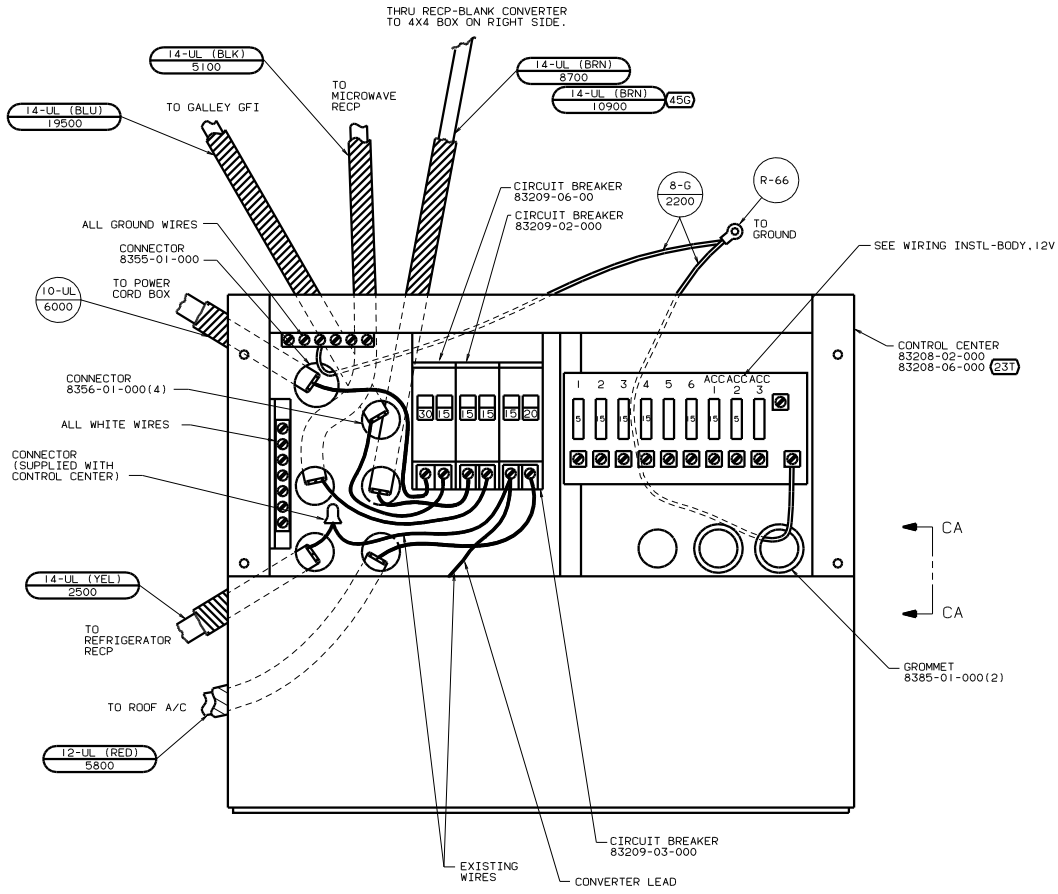


- NOTES:
- ⑦ WIRE ROUTED IN SIDEWALL.
 - ⑥ SEE WIRING INSTL-TV/VCR, SIDE FOR ADDITIONAL INFORMATION.
 - ⑤ NOT USED WITH 76C
 - ④ SEE ENT CTR INSTL-EXT FOR ADDITIONAL INFORMATION.
 - ③ ROUTE WIRE THRU SIDEWALL.
 - ② ROUTE WIRE THRU ROOF.
 - ① ROUTE WIRE THRU FLOOR.

- 76C ENTERTAINMENT CTR/EXT CASSETTE
- 45G BED-TWINS
- 44X BED-QUEEN SIDEWALL
- 12D ELECTRICAL SYSTEM 30 AMP
- 1B1 CODES/STANDARDS USA

FOR ELECTRICAL TORQUE SPECIFICATIONS SEE DWG NO. 128783-01-000	X-X	FOR ELECTRICAL CALLOUTS SEE DWG NO. 121339-01-000
--	-----	---

181	12D	'00 331T
WIRING INSTL-BODY.110(R30US)		
SHEET 2 of 7		DWG NO. 132251



- 3 FASTEN ALL WIRES TO SUPPORT. USE ONE SCREW PER CLAMP.
2. ALL GROUND WIRES TO BE COVERED WITH TUBING 8041-02-000.
1. ALL CABLES SHALL BE COVERED WITH CONDUIT-CONVOLUTE, SLIT 41953-01-000 UNLESS OTHERWISE SPECIFIED. 600MM LESS THAN CABLE LENGTH.

- (231) HEATED HOLDING TANKS-PACKAGE
- (456) BED-TWINS
- (120) ELECTRICAL SYSTEM 30 AMP
- (1B1) CODES/STANDARDS USA

FOR ELECTRICAL TORQUE SPECIFICATIONS SEE DWG NO. 128783-01-000

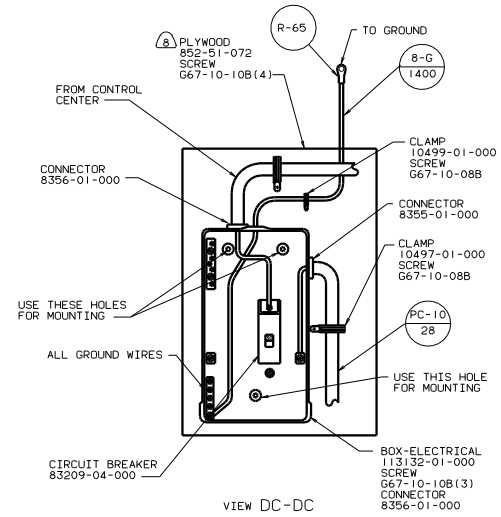
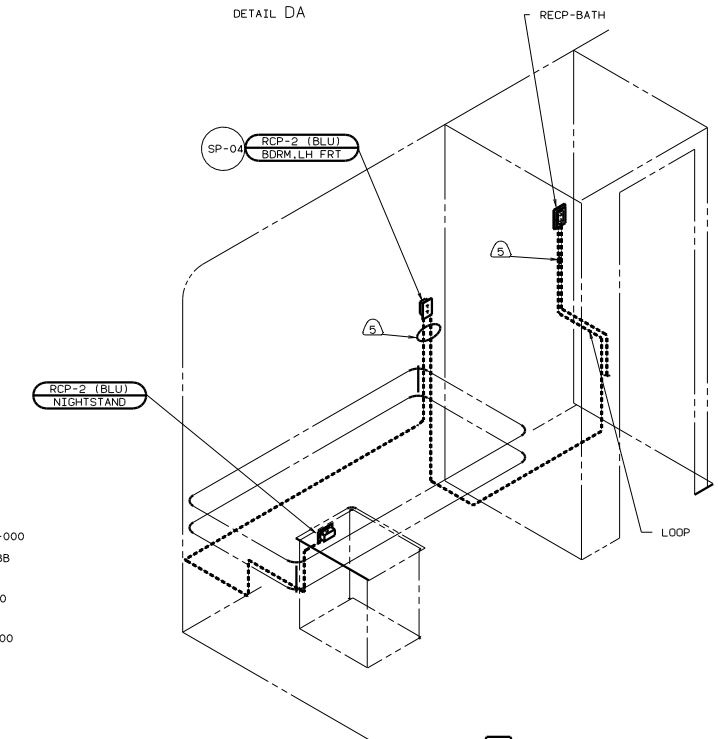
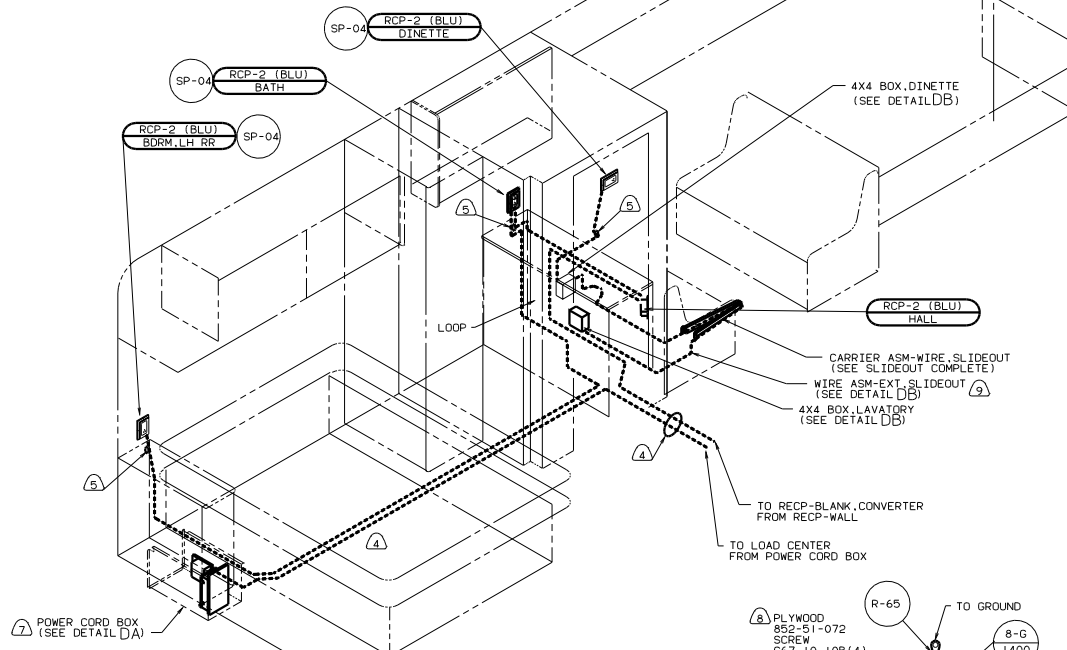
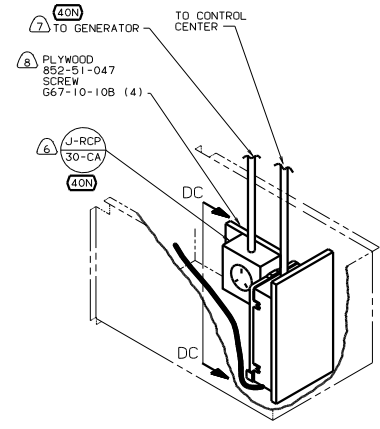
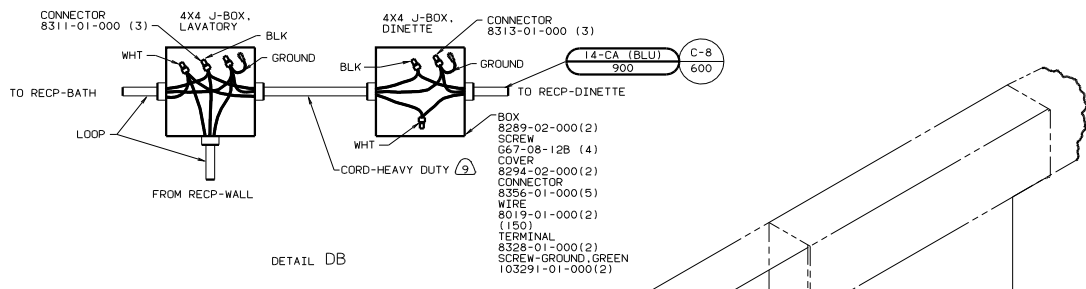
(X-X)

FOR ELECTRICAL CALLOUTS SEE DWG NO. 121339-01-000

(1B1) (120) '00 331T

WIRING INSTL-BODY, 110(LC30US)

132251



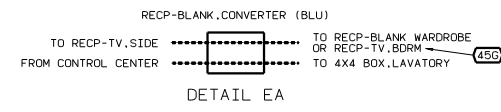
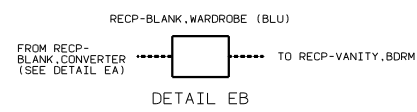
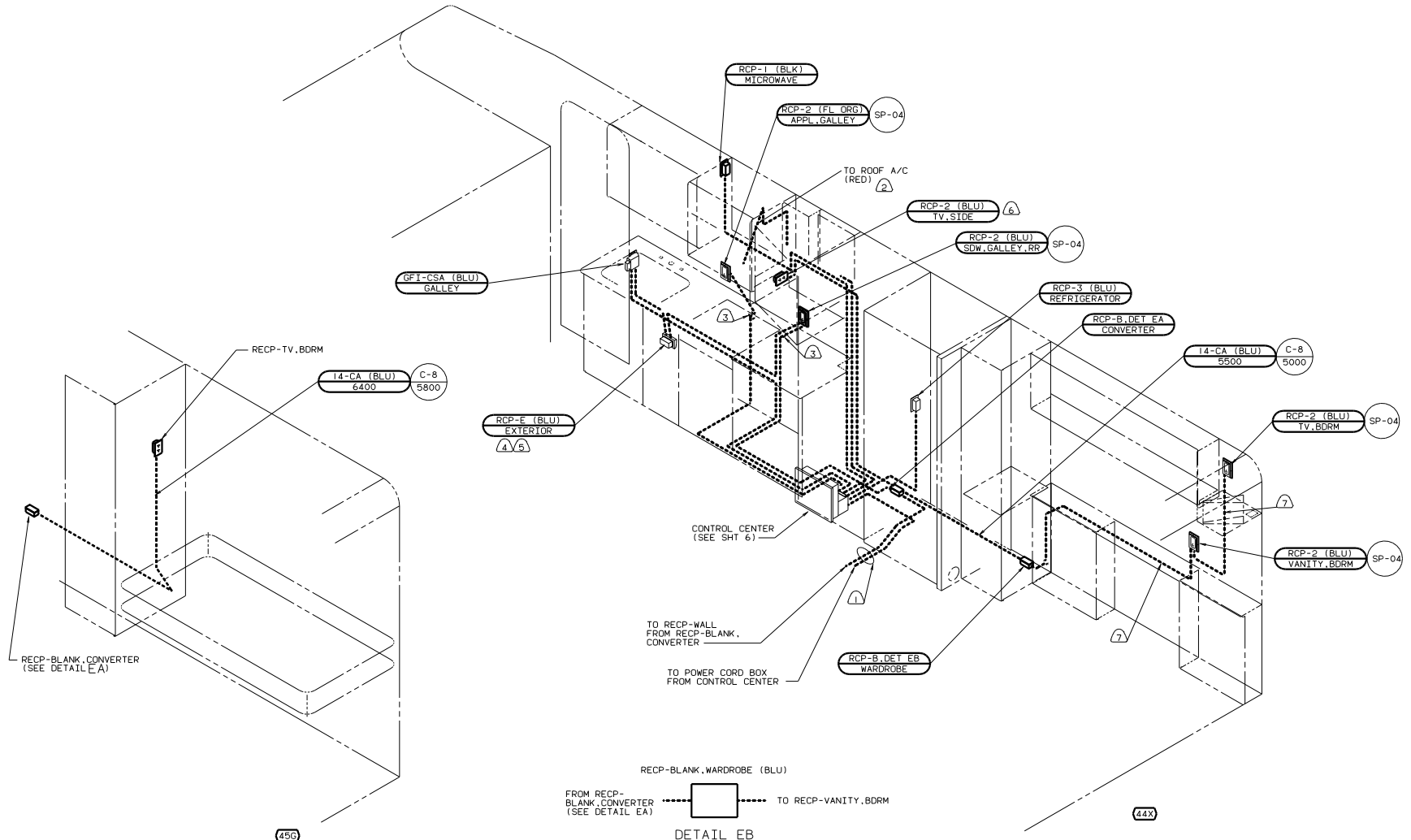
- (9) CORD IS PART OF WIRE ASM-EXT, SLIDEOUT CALLED OUT ON WIRING INSTL-BODY, 12V.
- (8) PAINT EXPOSED SURFACES BLACK WITH 106112-01-000.
- (7) SEE GENERATOR INSTL FOR ADDITIONAL INFORMATION.
- (6) INSTALL RECP WITH GROUND TOWARD OUTBOARD SIDE OF VEHICLE.
- (5) ROUTE WIRE THRU SIDEWALL.
- (4) ROUTE WIRE THRU FLOOR.
3. ALL GROUND WIRES TO BE COVERED WITH TUBING 8041-02-000.
2. ALL WIRES ARE TO BE CLAMPED WITH CLAMP 10497-05-000 WITHIN 200 OF OUTLET BOXES. USE SCREW 667-10-12B UNLESS OTHERWISE SPECIFIED.
1. ALL WIRE TO BE CLAMPED WITH CLAMP 10495-01-000 OR CLIP 80734-02-000 EVERY 600. USE SCREW 667-10-12B UNLESS OTHERWISE SPECIFIED.

- (45G) BED-TWINS
 (44X) BED-QUEEN SIDEWALL
 (40N) GEN-4.0KW-DNAN-GAS-MICROLITE
 (26S) CODES/STANDARDS-CSA/CMVSS
 (120) ELECTRICAL SYSTEM 30 AMP

FOR ELECTRICAL TORQUE SPECIFICATIONS SEE DWG NO. 128783-01-000

FOR ELECTRICAL CALLOUTS SEE DWG NO. 121339-01-000

120 26S '00 331T
 WIRING INSTL-BODY, 110 L30CA
 132251



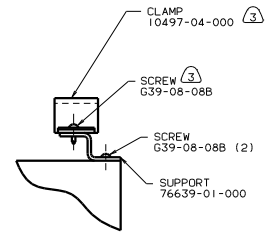
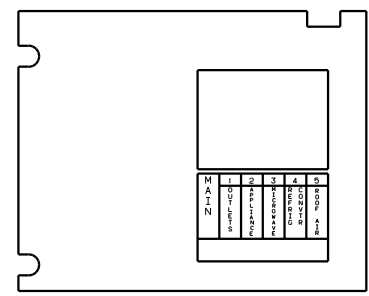
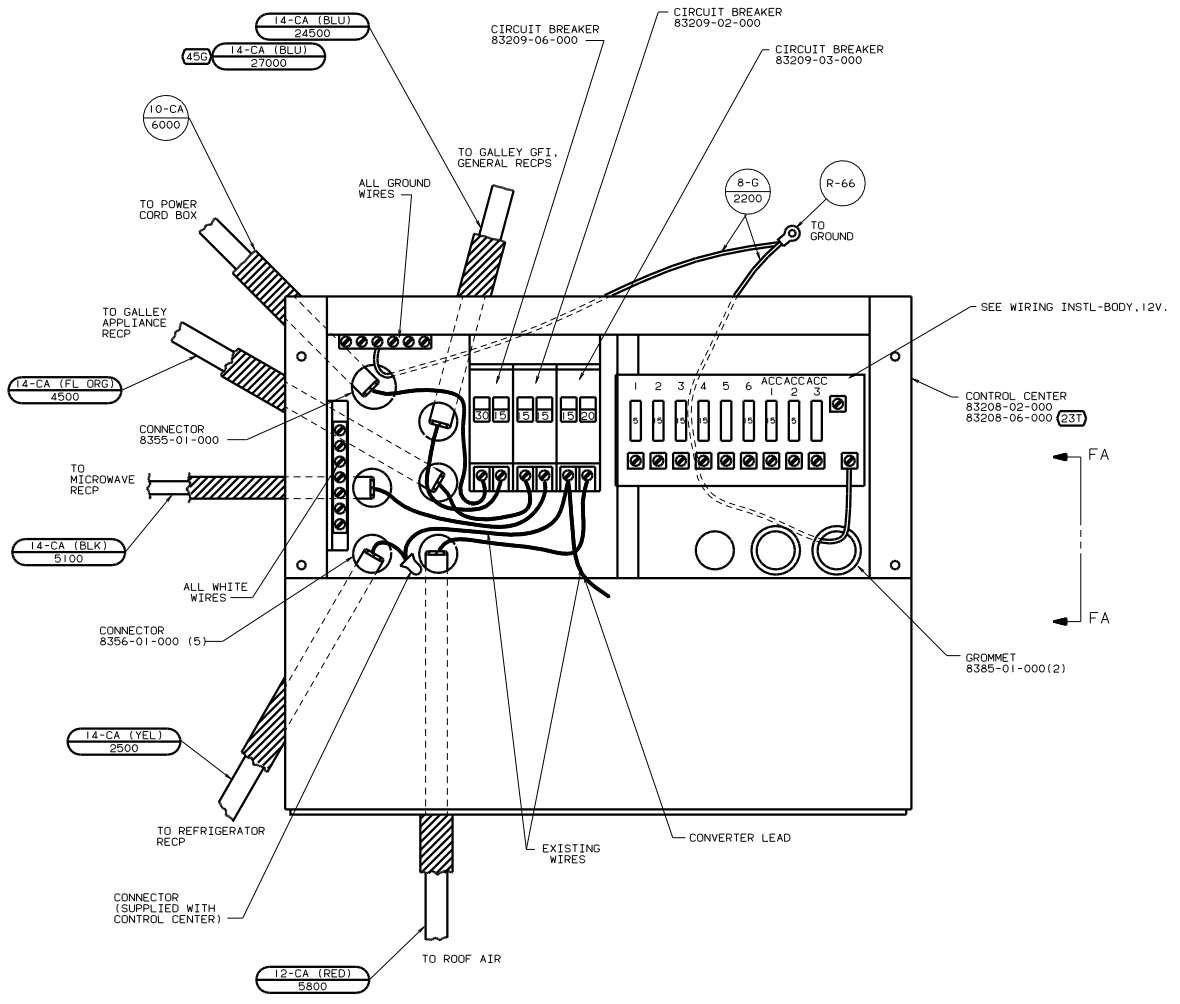
- NOTES:
- ⑦ WIRE ROUTED IN SIDEWALL.
 - ⑥ SEE WIRING INSTL-TV/VCR SIDE FOR ADDITIONAL INFORMATION.
 - ⑤ NOT USED WITH 76C
 - ④ SEE ENT CTR INSTL-EXT FOR ADDITIONAL INFORMATION.
 - ③ ROUTE WIRE THRU SIDEWALL.
 - ② ROUTE WIRE THRU ROOF.
 - ① ROUTE WIRE THRU FLOOR.

FOR ELECTRICAL TORQUE SPECIFICATIONS SEE DWG NO. 128783-01-000

FOR ELECTRICAL CALLOUTS SEE DWG NO. 121539-01-000

- 76C ENTERTAINMNT CTR/EXT CASSETTE
- 45G BED-TWINS
- 44X BED-QUEEN SIDEWALL
- 265 CODES/STANDARDS-CSA/CMVSS
- 120 ELECTRICAL SYSTEM 30 AMP

TITLE: WIRING INSTL-BODY, 110 R30CA
 SHEET 5 OF 7
 132251



SEE WIRING INSTL-BODY, 12V.
 CONTROL CENTER
 83208-02-000
 83208-06-000 (231)
 FA
 FA

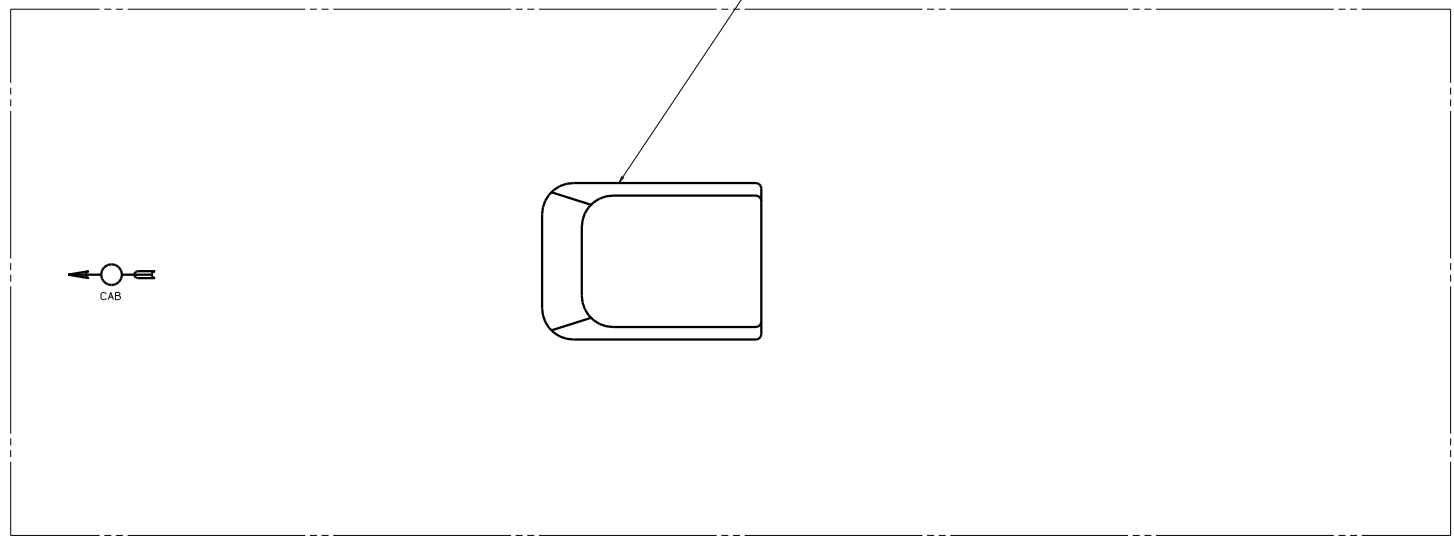
GROMMET
 8385-01-000(2)


- 3 FASTEN ALL WIRES TO SUPPORT. USE ONE SCREW PER CLAMP.
 2. ALL GROUND WIRES TO BE COVERED WITH TUBING 8041-02-000.
 1. ALL CABLES SHALL BE COVERED WITH CONDUIT-CONVOLUTE, SLIT 41953-01-000 UNLESS OTHERWISE SPECIFIED. 60MM LESS THAN CABLE LENGTH.

- (231) HEATED HOLDING TANKS-PACKAGE
- (456) BED-TWINS
- (265) CODES/STANDARDS-CSA/CMVSS
- (120) ELECTRICAL SYSTEM 30 AMP




(X-X) FOR ELECTRICAL CALLOUTS SEE CWG NO. 121339-01-000

120 (265) '00 331T
 WIRING INSTL-BODY, 110 LC30CA
 SHEET 6 OF 7 132251



AIR CONDITIONER 
 131188-01-CHT
 CEILING ASM-A/C DUCTED
 131184-03-CHT


 CAB

-  A/C ROOF AIR (1) 14,800 BTU
-  CODES/STANDARDS-CSA/CMVSS
-  CODES/STANDARDS USA

   '00 331T

 SEE WIRING INSTL-BODY, 12V FOR ADDITIONAL INFORMATION.

NOTES:

TITLE		WIRING INSTL-BODY, 110V (EXT)	
NO. OF SHEETS	OF	SHEET	NO.
7	of	7	132251