



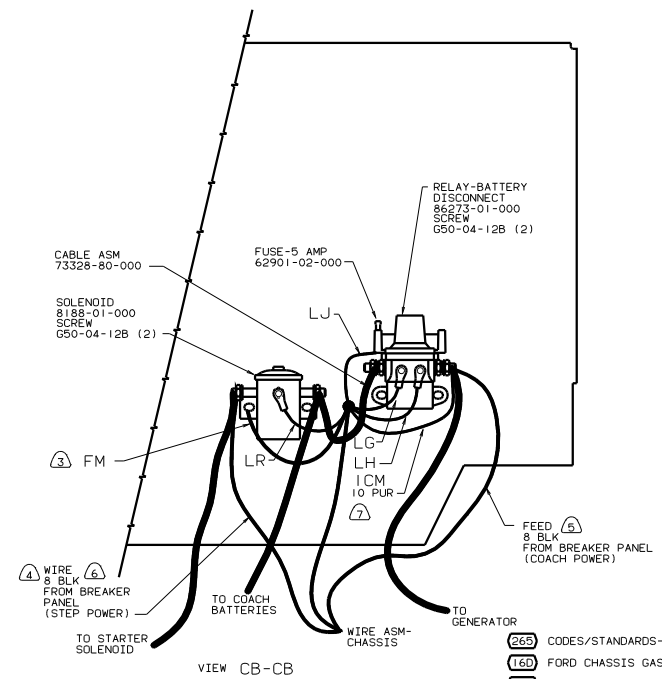
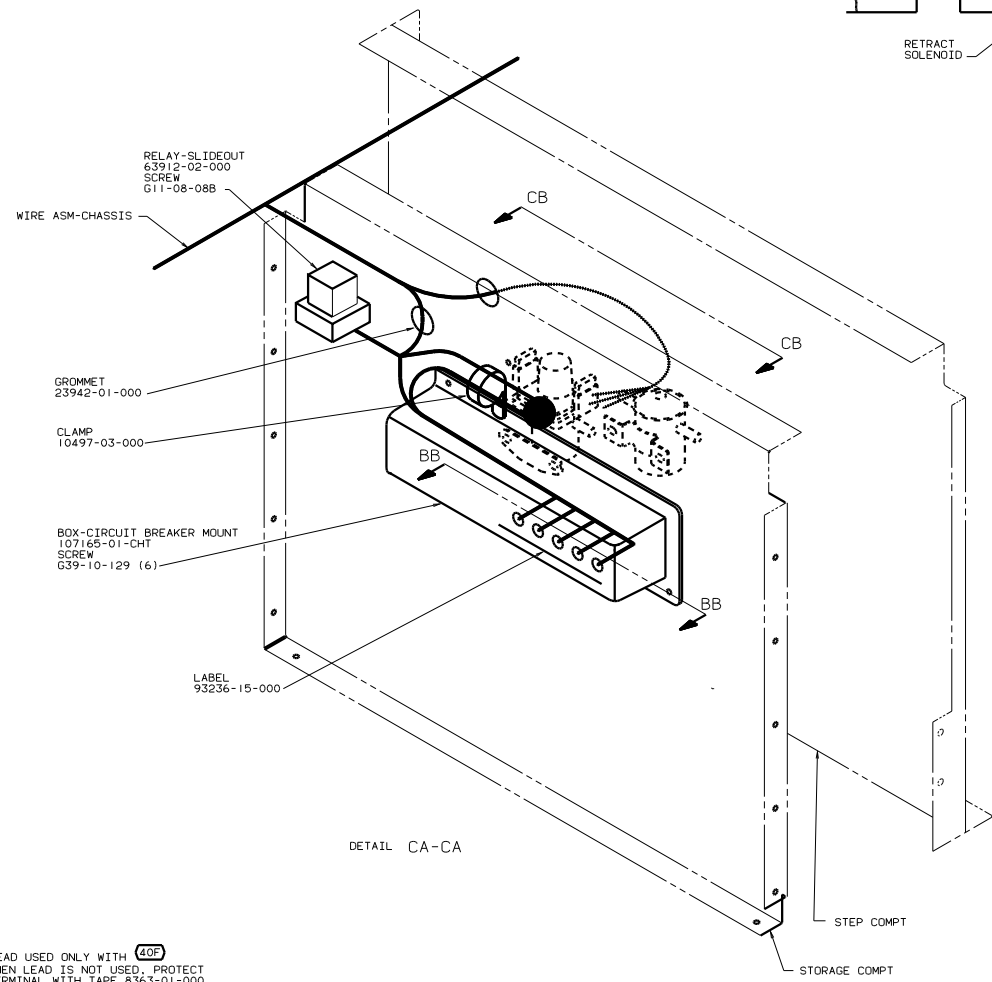
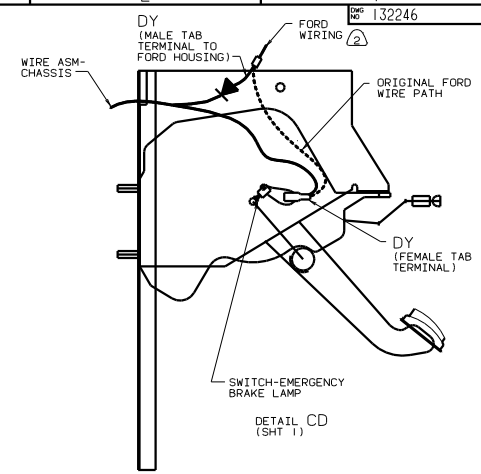
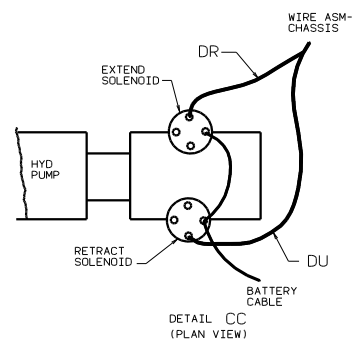
DANGER

Danger of electrical shock, burns or death. Always remove all power sources before attempting any repair, service or diagnostic work. Power can be present from shore power, generator, inverter or battery. All power sources must be disabled and secured before performing any service.



CAUTION

If you lack the skills, tools or equipment to perform diagnostic or repair work leave such work to an authorized Winnebago Industries dealer or other qualified shop.



- NOTES:
- ⑦ LEAD USED ONLY WITH (40P) WHEN LEAD IS NOT USED. PROTECT TERMINAL WITH TAPE 8363-01-000 AND SECURE TO MAIN WIRE ASM.
 - ⑥ LEAD IDENTIFIED WITH YELLOW TAPE.
 - ⑤ LEAD IDENTIFIED WITH RED TAPE.
 - ④ LEAD USED ONLY WITH (1E2) WHEN LEAD IS NOT USED. PROTECT TERMINAL WITH TAPE 8363-01-000 AND SECURE TO MAIN WIRE ASM.
 - ③ SECURE WITH SOLENOID MOUNTING BOLT.
 - ② DISCONNECT THE FORD WIRING FROM THE PARK BRAKE INDICATOR SWITCH. RECONNECT CIRCUIT DY AS SHOWN.
 - ① LOCATE BOX VERTICALLY BY CENTERING ON HOLE IN COMPT.

FOR ELECTRICAL TORQUE SPECIFICATIONS SEE DWG NO. 128783-01-000

- (265) CODES/STANDARDS-CSA/CMVSS
- (16D) FORD CHASSIS GAS
- (1E2) ENTRANCE STEP-ELEC.
- (1B1) CODES/STANDARDS USA

TITLE: WIRING INSTL-CHASSIS (DIL)	
00 331C/00 331T	1E1
01 331C/01 331T	1E2
DRAWN BY: 132246	