



**DANGER**

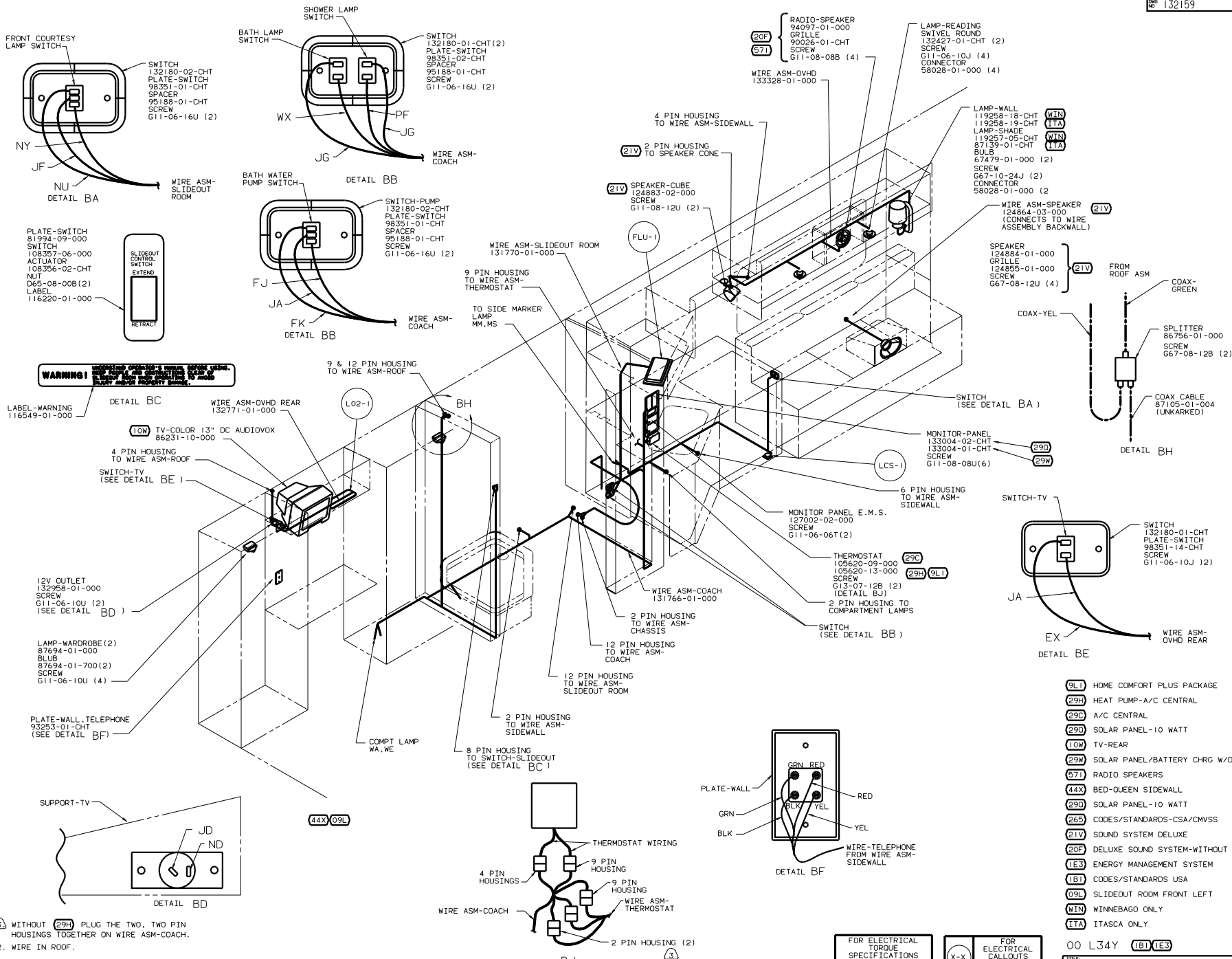
**Danger of electrical shock, burns or death.** Always remove all power sources before attempting any repair, service or diagnostic work. Power can be present from shore power, generator, inverter or battery. All power sources must be disabled and secured before performing any service.



**CAUTION**

If you lack the skills, tools or equipment to perform diagnostic or repair work leave such work to an authorized Winnebago Industries dealer or other qualified shop.





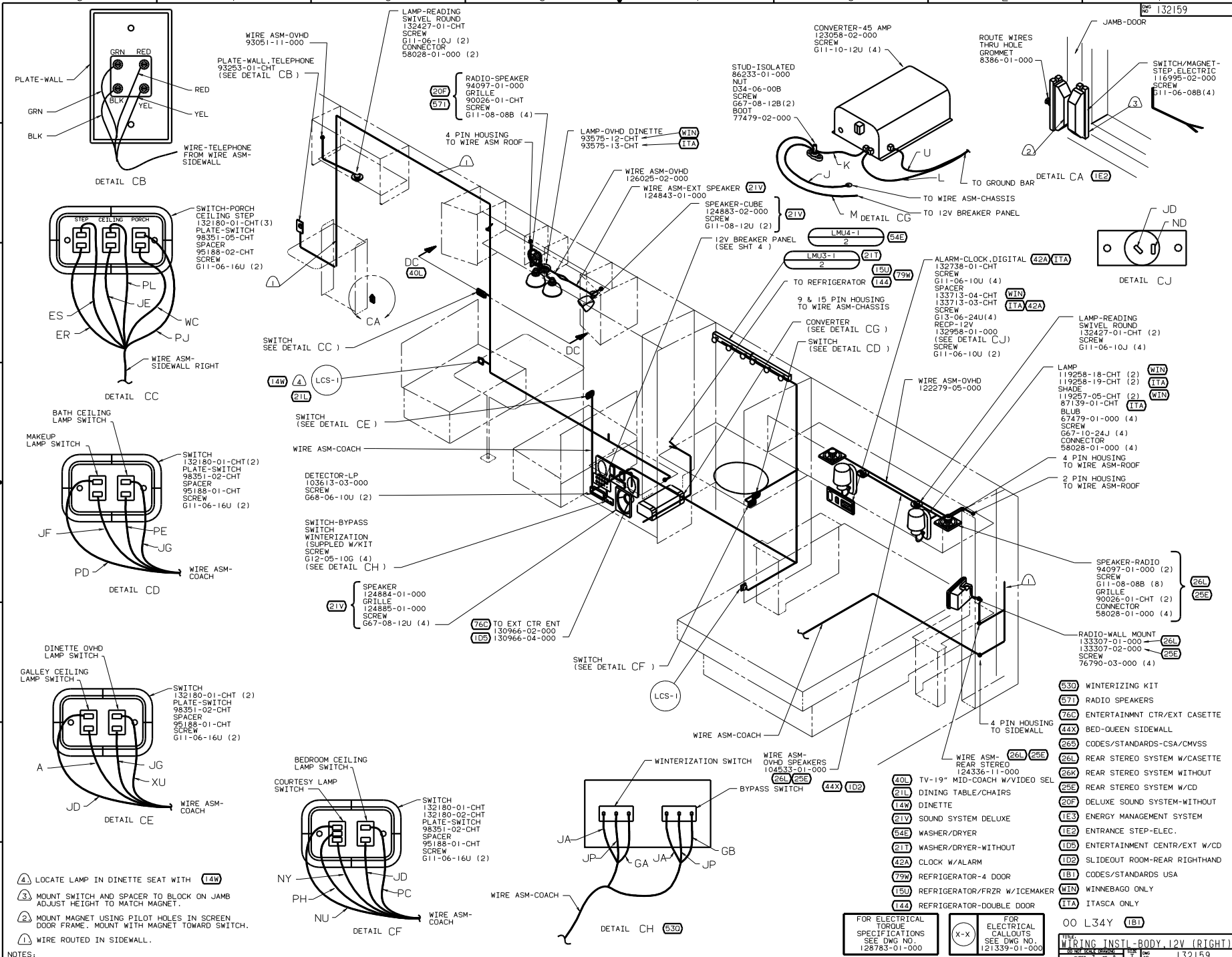
**WARNING!** DO NOT CONNECT TO THE BATTERY OR TO THE MAIN ELECTRICAL SYSTEM. ALWAYS DISCONNECT THE BATTERY AND MAIN ELECTRICAL SYSTEM BEFORE WORKING ON THE WIRING. ALWAYS USE THE CORRECT WIRE GAUGE AND TYPE. ALWAYS USE THE CORRECT WIRE COLOR AND MARKING. ALWAYS USE THE CORRECT WIRE TERMINALS AND CONNECTIONS. ALWAYS USE THE CORRECT WIRE BUNDLING AND LABELING. ALWAYS USE THE CORRECT WIRE PROTECTIVE COVERINGS. ALWAYS USE THE CORRECT WIRE SUPPORTS AND HANGERS. ALWAYS USE THE CORRECT WIRE IDENTIFICATION AND MARKING. ALWAYS USE THE CORRECT WIRE TESTING AND TROUBLESHOOTING PROCEDURES. ALWAYS USE THE CORRECT WIRE SAFETY PROCEDURES. ALWAYS USE THE CORRECT WIRE TOOLS AND EQUIPMENT. ALWAYS USE THE CORRECT WIRE WORKING PROCEDURES. ALWAYS USE THE CORRECT WIRE CLEANING AND MAINTENANCE PROCEDURES. ALWAYS USE THE CORRECT WIRE DISPOSAL PROCEDURES.

- 3) WITHOUT (29H) PLUG THE TWO, TWO PIN HOUSINGS TOGETHER ON WIRE ASM-COACH.  
 2. WIRE IN ROOF.  
 1. WIRE IN SIDEWALL.

- (9L1) HOME COMFORT PLUS PACKAGE
- (29H) HEAT PUMP-A/C CENTRAL
- (29C) A/C CENTRAL
- (29D) SOLAR PANEL-10 WATT
- (10W) TV-REAR
- (29W) SOLAR PANEL/BATTERY CHRGR W/O
- (571) RADIO SPEAKERS
- (44X) BED-QUEEN SIDEWALL
- (29D) SOLAR PANEL-10 WATT
- (265) CODES/STANDARDS-CSA/CMVSS
- (21V) SOUND SYSTEM DELUXE
- (20F) DELUXE SOUND SYSTEM-WITHOUT
- (1E3) ENERGY MANAGEMENT SYSTEM
- (1B1) CODES/STANDARDS USA
- (09L) SLIDEOUT ROOM FRONT LEFT
- (WIN) WINNEBAGO ONLY
- (1TA) ITASCA ONLY

|  |       |   |
|--|-------|---|
| FOR ELECTRICAL TORQUE SPECIFICATIONS SEE DWG NO. 128783-01-000 | (X-X) | FOR ELECTRICAL CALLOUTS SEE DWG NO. 121339-01-000 |
|--|-------|---|

00 L34Y (1B1)(1E3)  
 WIRING INSTL-BODY, 12V (LEFT)  
 SHEET 2 OF 8  
 132159



- NOTES:
- ① WIRE ROUTED IN SIDEWALL.
  - ② MOUNT MAGNET USING PILOT HOLES IN SCREEN DOOR FRAME. MOUNT WITH MAGNET TOWARD SWITCH.
  - ③ MOUNT SWITCH AND SPACER TO BLOCK ON JAMB. ADJUST HEIGHT TO MATCH MAGNET.
  - ④ LOCATE LAMP IN DINETTE SEAT WITH (14W)

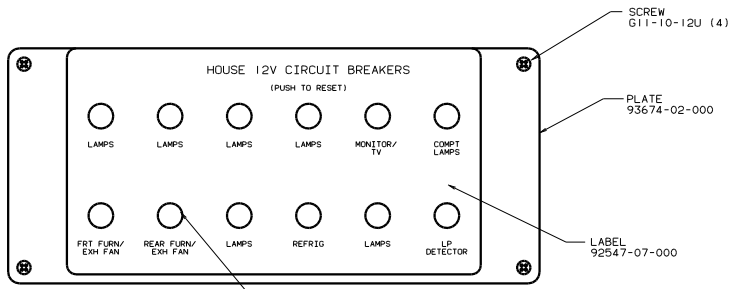
|  |       |   |
|--|-------|---|
| FOR ELECTRICAL TORQUE SPECIFICATIONS SEE DWG NO. 128783-01-000 | (X-X) | FOR ELECTRICAL CALLOUTS SEE DWG NO. 121339-01-000 |
|--|-------|---|

WIRING INSTL-BODY, 12V (RIGHT)

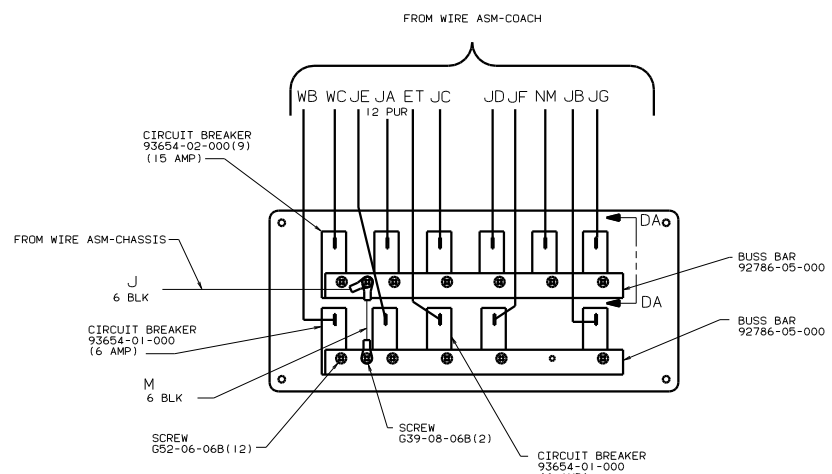
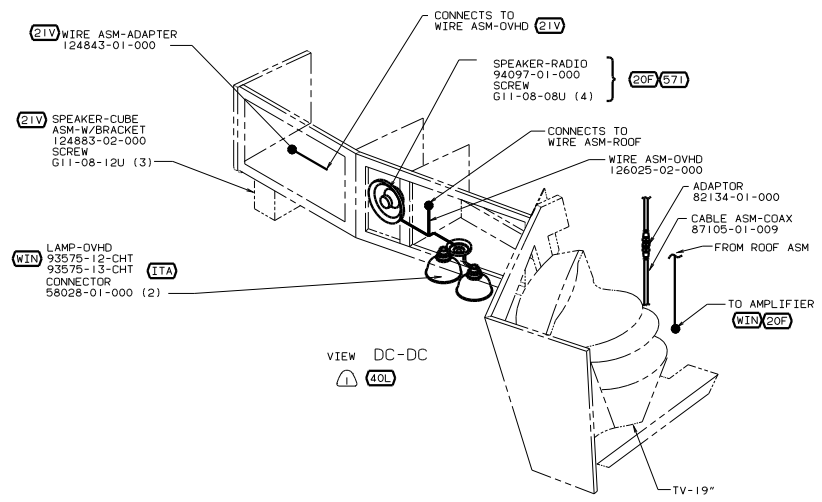
00 L34Y (1B1)

Sheet 3 of 8

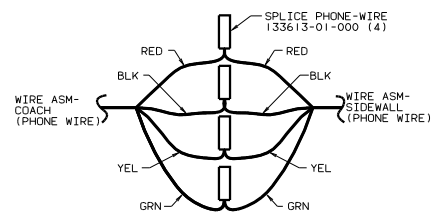
- (530) WINTERIZING KIT
- (571) RADIO SPEAKERS
- (760) ENTERTAINMENT CTR/EXT CASSETTE
- (44X) BED-QUEEN SIDEWALL
- (265) CODES/STANDARDS-CSA/CMVSS
- (26L) REAR STEREO SYSTEM W/CASSETTE
- (26K) REAR STEREO SYSTEM WITHOUT CASSETTE
- (25F) REAR STEREO SYSTEM W/CD
- (20E) DELUXE SOUND SYSTEM-WITHOUT CASSETTE
- (1E3) ENERGY MANAGEMENT SYSTEM
- (1E2) ENTRANCE STEP-ELEC.
- (1D5) ENTERTAINMENT CTR/EXT W/CD
- (1D2) SLIDEOUT ROOM-REAR RIGHTHAND
- (1B1) CODES/STANDARDS USA
- (WIN) WINNEBAGO ONLY
- (ITA) ITASCA ONLY



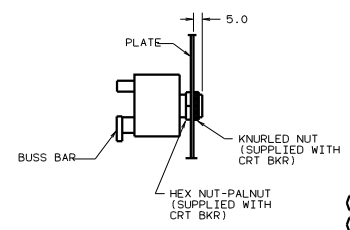
CIRCUIT BREAKER (FRONT VIEW)



CIRCUIT BREAKER (BACK VIEW)



DETAIL DB



SECTION DA-DA

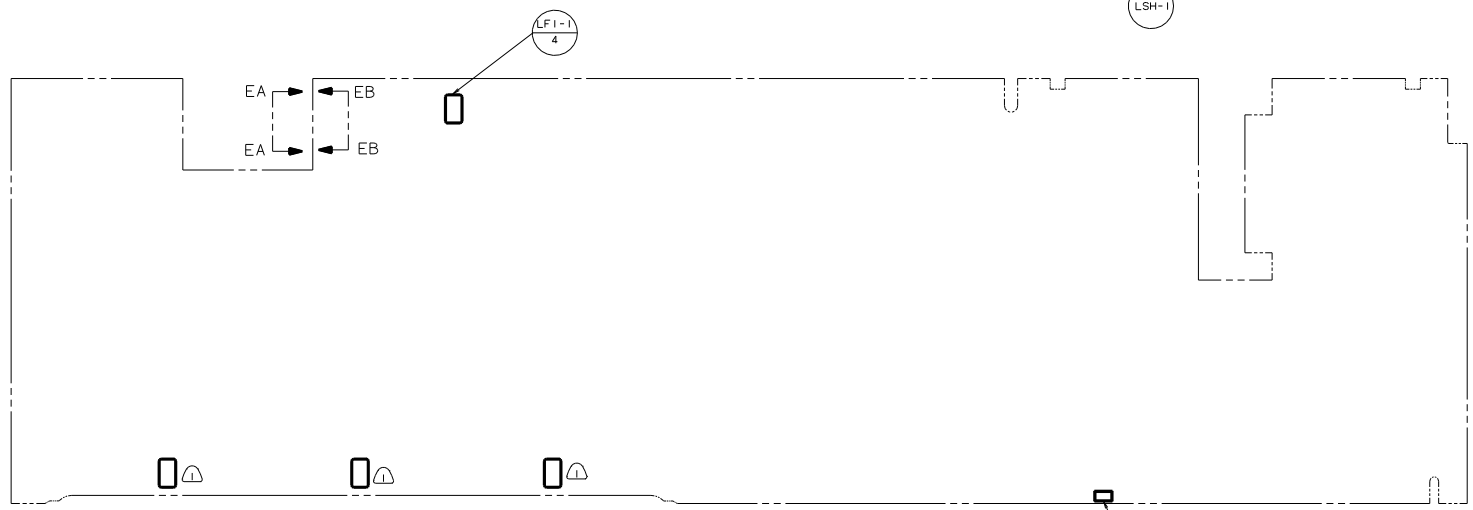
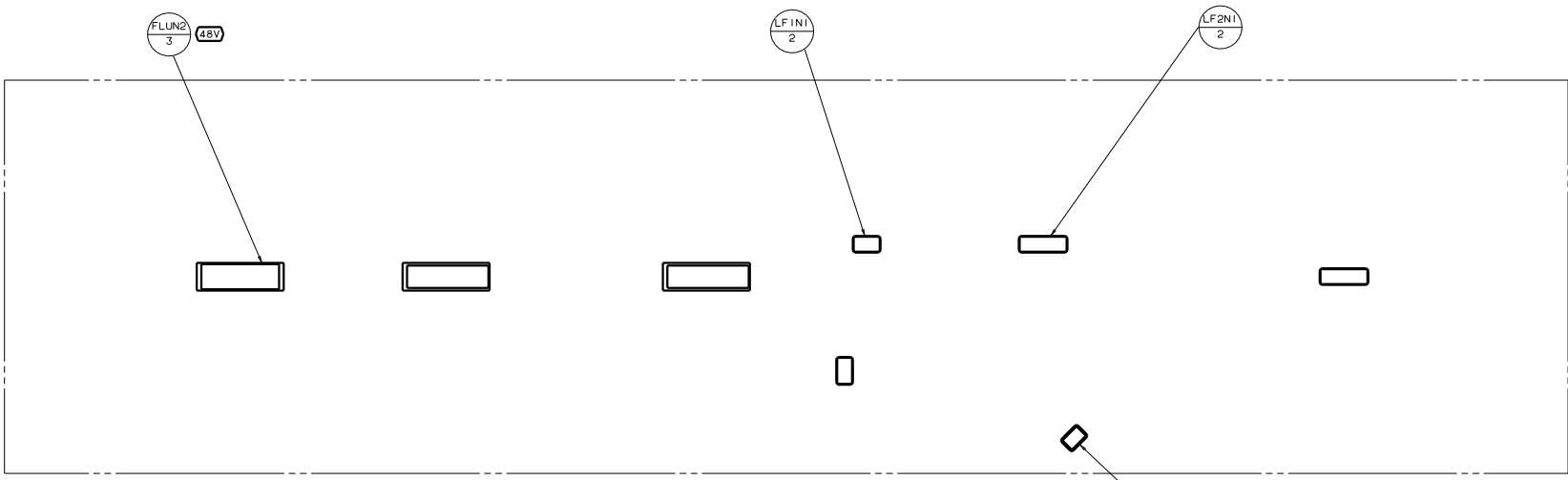
- (571) RADIO SPEAKERS
  - (20F) DELUXE SOUND SYSTEM-WITHOUT
  - (WIN) WINNEBAGO ONLY
  - (ITA) ITASCA ONLY
  - (40L) TV-19" MID-COACH W/VIDEO SEL
  - (21V) SOUND SYSTEM DELUXE
  - (265) CODES/STANDARDS-CSA/CMVSS
  - (1B1) CODES/STANDARDS USA
- OO L34Y (1B1)

FOR ELECTRICAL TORQUE SPECIFICATIONS SEE DWG NO. 128783-01-000

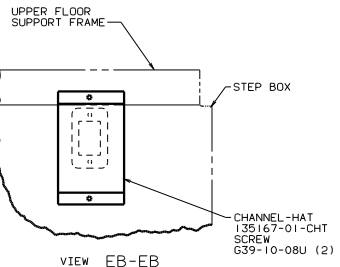
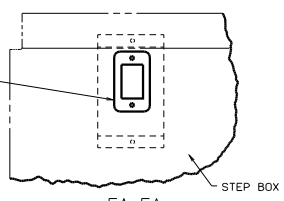
|                                 |                |
|---------------------------------|----------------|
| TITLE: WIRING INSTL-BODY(12 BP) |                |
| NO. OF SHEETS: 8                | TOT. SHEETS: 8 |
| SHEET: 4 OF 8                   | REV: 1         |
| 132159                          |                |

SEE WIRING INSTL-TV/VCR FOR ADDITIONAL INFORMATION.

NOTES:



SWITCH-BATTERY .DISC  
108357-06-000  
ACTUATOR-SWITCH  
108356-11-CHT  
PLATE-SWITCH  
98351-07-CHT  
SCREW  
G11-06-16U (2)



LAMP  
86280-01-000  
SCREW  
G57-10-12U (4)  
CONNECTOR  
58028-01-000 (2)

- (48M) LIGHTS-INCANDESCENT
- (48V) LIGHTS-FLUORESCENT
- (265) CODES/STANDARDS-CSA/CMSS
- (1B1) CODES/STANDARDS USA

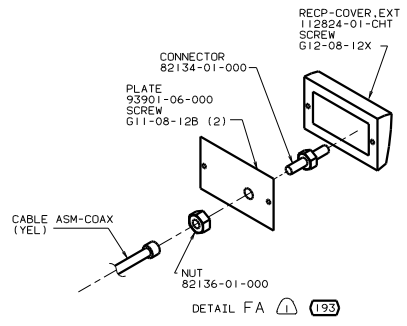
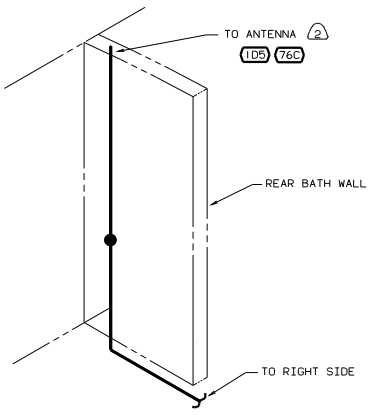
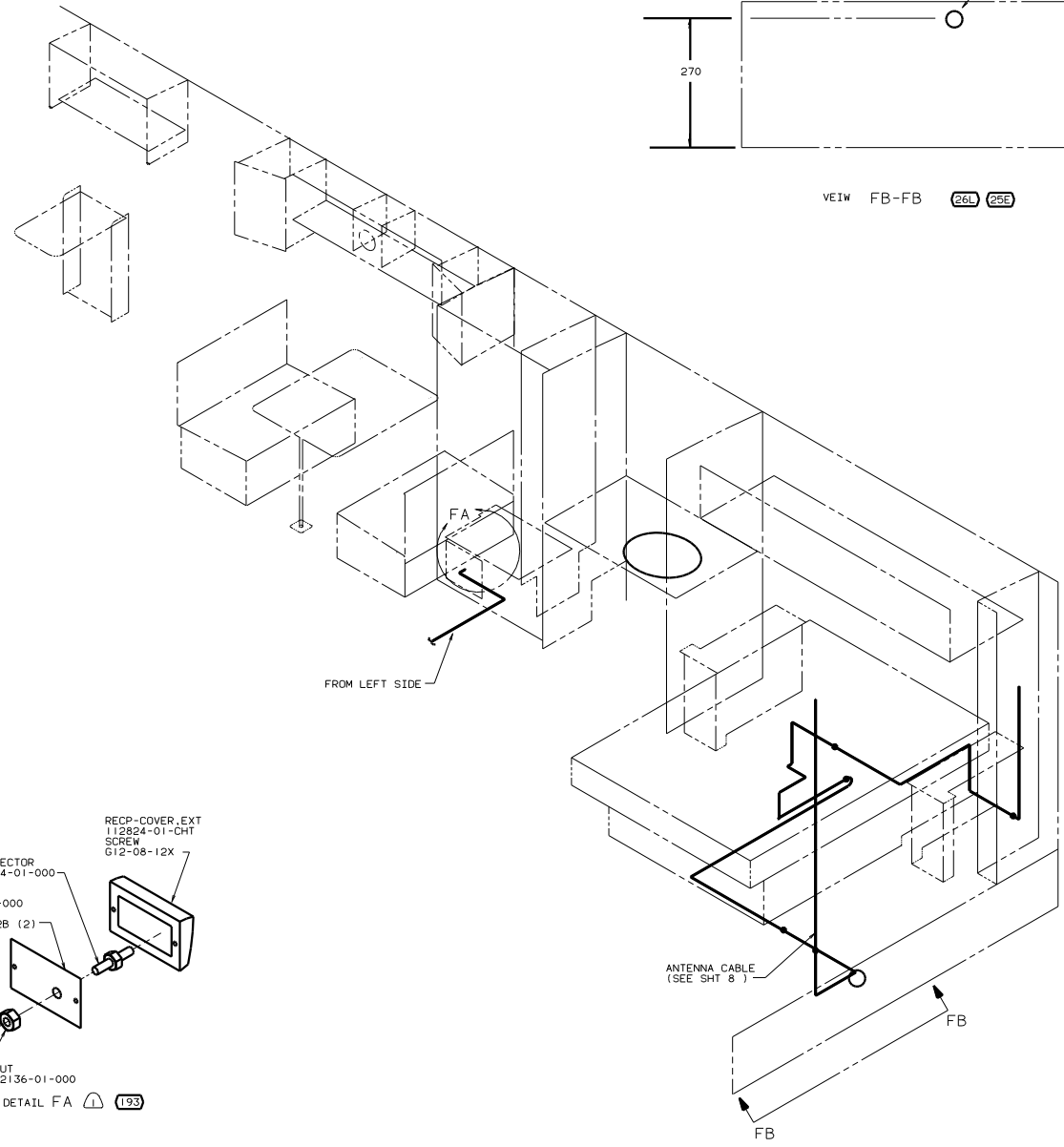
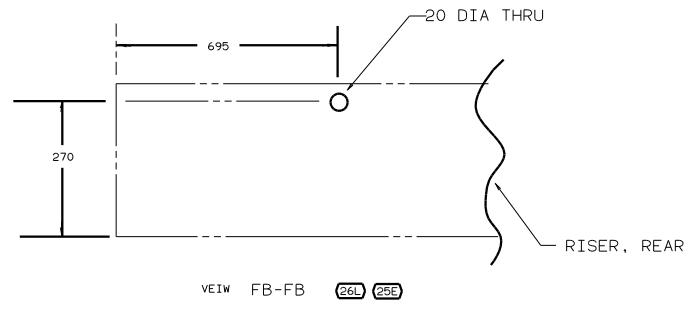
FOR ELECTRICAL TORQUE SPECIFICATIONS SEE DWG NO. 128783-01-000

FOR ELECTRICAL CALLOUTS SEE DWG NO. 121339-01-000

00 L34Y (1B1) (265)

TITLE: WIRING INSTL-BODY,12V (CL)  
NO. OF SHEETS: 8 SHEET NO. 5 OF 8 DWG NO. 132159

NOTES:  
1) LAMPS LOCATED IN SLIDEOUT COMPARTMENTS.



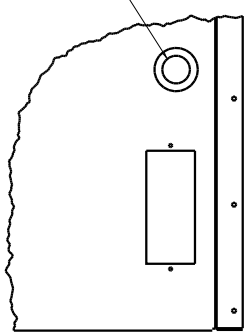
- 76C ENTERTAINMNT CTR/EXT CASSETTE
  - 26L REAR STEREO SYSTEM W/CASSETTE
  - 25E REAR STEREO SYSTEM W/CD
  - 1D5 ENTERTAINMENT CENTR/EXT W/CD
  - 193 TV ANTENNA
  - 26S CODES/STANDARDS-CSA/CMVSS
  - 1B1 CODES/STANDARDS USA
- 00 L34Y 1B1

|                                |          |
|--------------------------------|----------|
| WIRING INSTL-BODY, 12V(R COAX) |          |
| DATE                           | FIG. NO. |
| 10/25/88                       | 1        |
| SHEET 6 OF 8                   | 132159   |

NOTES:  
 (2) SEE SHEET 8 FOR ADDITIONAL INFORMATION.  
 (1) USE WITHOUT 76C OR 1D5

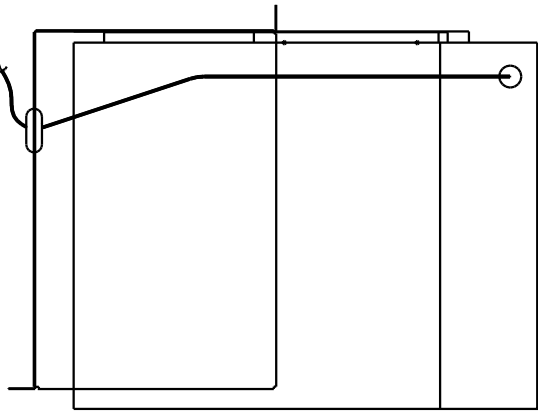
GROMMET  
23942-01-000

WIRE ASM-THERMOSTAT  
(COIL UP AND TIE EXCESS  
WIRE IN BASEMENT AREA  
WITH WIRE TIE 8343-02-000)

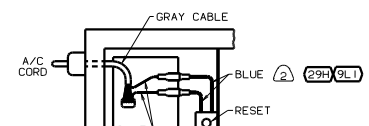


VIEW GB-GB

TO THERMOSTAT



VIEW GA-GA



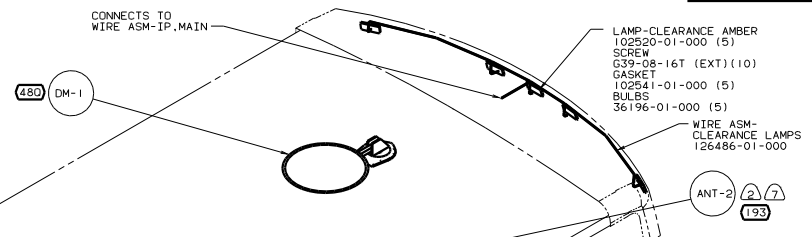
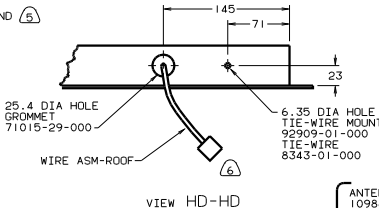
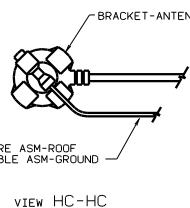
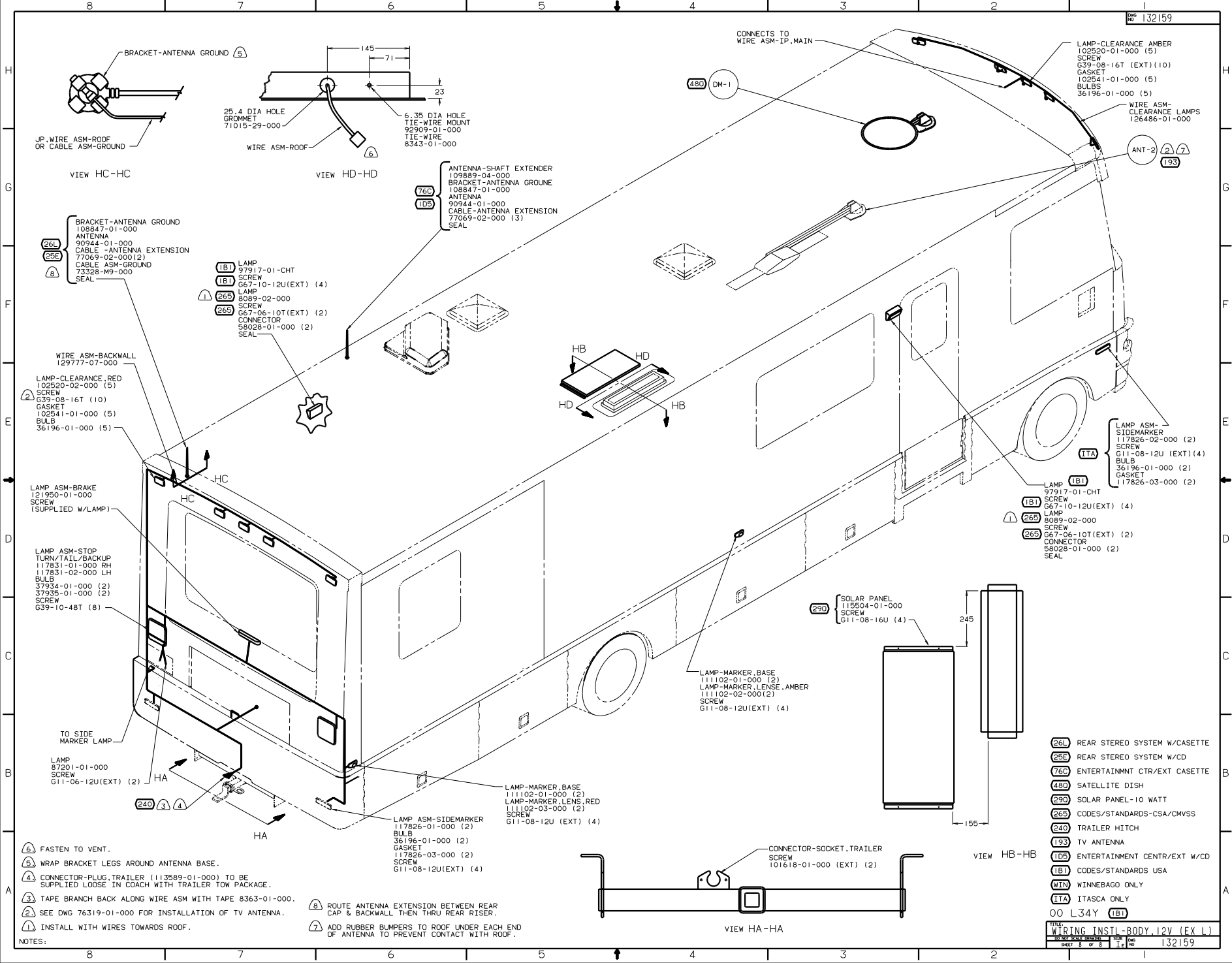
VIEW GC-GC

- NOTES:
- Ⓐ CONNECT BLUE WIRES FROM RESET TO THE BLUE WIRES WITH SPADE TERMINALS ON A/C CORD WITH (29H) & (9L1) FEATURE.
  - Ⓐ SEE WIRING INSTL-BODY.110V FOR ADDITIONAL INFORMATION.

- (9L1) HOME COMFORT PLUS PACKAGE
- (29H) HEAT PUMP-A/C CENTRAL
- (265) CODES/STANDARDS-CSA/CMVSS
- (1B1) CODES/STANDARDS USA

00 L34Y (1B1) (265)





- (76C) ANTENNA-SHAFT EXTENDER 109889-04-000
- (1DB) BRACKET-ANTENNA GROUND 108847-01-000
- ANTENNA 90944-01-000
- CABLE-ANTENNA EXTENSION 77069-02-000 (3)
- SEAL

- (26L) BRACKET-ANTENNA GROUND 108847-01-000
- (26E) ANTENNA 90944-01-000
- (8) CABLE-ANTENNA EXTENSION 77069-02-000(2)
- CABLE ASM-GROUND 73328-M9-000
- SEAL

- (1B) LAMP 97917-01-CHT
- (1B) SCREW G67-10-12U(EXT) (4)
- (26S) LAMP 8089-02-000
- (26S) SCREW G67-06-10T(EXT) (2)
- (26S) CONNECTOR 58028-01-000 (2)
- SEAL

- (2) WIRE ASM-BACKWALL 129777-07-000
- LAMP-CLEARANCE RED 102520-02-000 (5)
- SCREW G39-08-16T (10)
- GASKET 102541-01-000 (5)
- BULB 36196-01-000 (5)

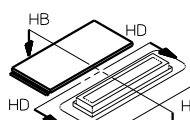
- LAMP ASM-BRAKE 121950-01-000
- SCREW (SUPPLIED W/LAMP)
- LAMP ASM-STOP TURN/TAIL/BACKUP 117831-01-000 RH
- 117831-02-000 LH
- BULB 37934-01-000 (2)
- 37935-01-000 (2)
- SCREW G39-10-48T (8)

- (240) TO SIDE MARKER LAMP
- LAMP 87201-01-000
- SCREW G11-06-12U(EXT) (2)

- (6) FASTEN TO VENT.
- (5) WRAP BRACKET LEGS AROUND ANTENNA BASE.
- (4) CONNECTOR-PLUG-TRAILER (113589-01-000) TO BE SUPPLIED LOOSE IN COACH WITH TRAILER TOW PACKAGE.
- (3) TAPE BRANCH BACK ALONG WIRE ASM WITH TAPE 8363-01-000.
- (2) SEE DWG 76319-01-000 FOR INSTALLATION OF TV ANTENNA.
- (1) INSTALL WITH WIRES TOWARDS ROOF.

NOTES:

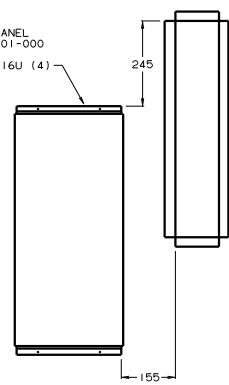
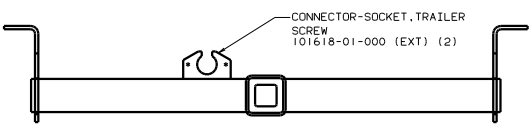
- (8) ROUTE ANTENNA EXTENSION BETWEEN REAR CAP & BACKWALL THEN THRU REAR RISER.
- (7) ADD RUBBER BUMPERS TO ROOF UNDER EACH END OF ANTENNA TO PREVENT CONTACT WITH ROOF.



- (290) SOLAR PANEL 115504-01-000
- SCREW G11-08-16U (4)
- LAMP-MARKER BASE 111102-01-000 (2)
- LAMP-MARKER LENSE AMBER 111102-02-000(2)
- SCREW G11-08-12U(EXT) (4)

- LAMP-MARKER BASE 111102-01-000 (2)
- LAMP-MARKER LENS RED 111102-03-000 (2)
- SCREW G11-08-12U (EXT) (4)

- LAMP ASM-SIDEMARKER 117826-01-000 (2)
- BULB 36196-01-000 (2)
- GASKET 117826-03-000 (2)
- SCREW G11-08-12U(EXT) (4)



- (26L) REAR STEREO SYSTEM W/CASSETTE
- (26E) REAR STEREO SYSTEM W/CD
- (76C) ENTERTAINMENT CTR/EXT CASSETTE
- (480) SATELLITE DISH
- (290) SOLAR PANEL-10 WATT
- (26S) CODES/STANDARDS-CSA/CMVSS
- (240) TRAILER HITCH
- (193) TV ANTENNA
- (1DB) ENTERTAINMENT CENTR/EXT W/CD
- (1B) CODES/STANDARDS USA
- (WIN) WINNEBAGO ONLY
- (ITA) ITASCA ONLY
- 00 L34Y (1B)